

PRESS RELEASE

Colorado Department of Labor and Employment • 633 17th Street, Suite 1200 • Denver, CO 80202 • (303) 318-8004 • Fax: (303) 318-8070

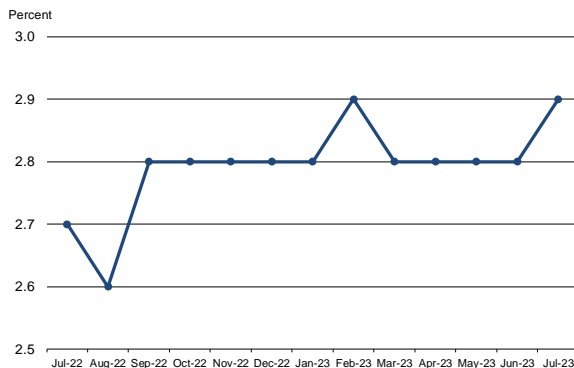
For Immediate Release

Date: August 18, 2023/ 8:00 A.M.
Contact: Office of Government, Policy and Public Relations
Email: cdle_pr@state.co.us
Web: <http://www.colmigateway.com>

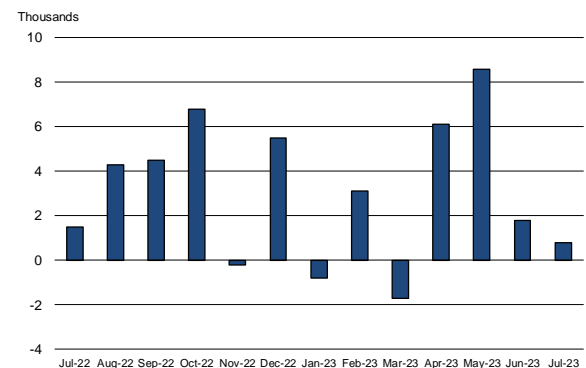
Colorado Employment Situation – July 2023

800 Nonfarm Payroll Jobs Added in July; Unemployment Rate Rises Slightly to 2.9 Percent

Colorado unemployment rate, seasonally adjusted
July 2022 - July 2023



Colorado nonfarm payroll employment over-the-month
change, seasonally adjusted, July 2022 - July 2023



Household survey data

- According to the survey of households, Colorado's seasonally adjusted **unemployment rate** increased one-tenth of a percentage point in July to 2.9 percent compared to the June rate of 2.8 percent. The **number of unemployed individuals** grew by 3,300 over the same time period to 95,000. Colorado's unemployment rate has been below 3.0 percent for fifteen consecutive months and remains at pre-pandemic levels. The national unemployment rate decreased one-tenth of a percentage point to 3.5 percent from June to July.
- Colorado's **labor force** increased by 3,400 in July to 3,252,500. The share of Coloradans participating in the labor force remained at 68.7 percent in July, identical to the two months prior. The U.S. labor force participation rate was 62.6 percent in July and has remained at that level for five straight months.
- Due to rounding, the **number of individuals employed** in Colorado was unchanged in July at 3,157,500, which represents 66.7 percent of the state's 16+ population. Colorado's employment-population ratio of 66.7 in July was one-tenth of percentage point lower compared to the June rate of 66.8 percent. The national employment-population ratio grew one-tenth of a percentage point in July to 60.4 percent.

Establishment survey data

- Employers in Colorado added 800 **nonfarm payroll jobs** from June to July for a total of 2,907,800 jobs, according to the survey of business establishments. Private sector payroll jobs decreased by 1,900, while government added 2,700 jobs.
- **June estimates** were revised down to 2,907,000, and the over the month change from May to June was a gain of 1,800 rather than the originally estimated increase of 4,700 (monthly revisions are based on additional responses from businesses and government agencies since the last published estimates).
- The **private industry sector with significant job gains** in July was professional and business services (\approx 2,600). Significant over the month private sector declines occurred in leisure and hospitality (\approx 3,500) and educational and health services (\approx 1,100).
- **Since July 2022**, nonfarm payroll jobs have increased 38,800, with the private sector growing by 18,200 and government adding 20,600 jobs. The largest **private sector job gains** were in leisure and hospitality (\approx 18,000), professional and business services (\approx 8,900), educational and health services (\approx 2,800), and other services (\approx 2,800). During that same period financial activities (\approx 7,100), trade, transportation, and utilities (\approx 5,400), construction (\approx 3,000), and information (\approx 2,000) **payroll jobs declined**. Colorado's **rate of job growth** over the past year is 1.4 percent, lagging the U.S. rate of 2.2 percent.
- Over the year, the **average workweek** for all Colorado employees on private nonfarm payrolls increased from 33.1 to 33.5 hours, while **average hourly earnings** grew from \$34.60 to \$35.91, two dollars and seventeen cents more than the national average hourly earnings of \$33.74.

###

All Colorado estimates from the establishment and household surveys, including greater geographic detail, are available at: <http://www.colmigateway.com>. Estimates for all states and the nation are available at: <http://www.bls.gov>.

For data visualizations, visit public.tableau.com/app/profile/cdle.lmi.

The **August 2023 Colorado Employment Situation** will be released at 8:00 AM on Friday, September 15, 2023. The full schedule of release dates for calendar year 2023 estimates is available at <http://www.colmigateway.com>.

###

Technical Notes

This release provides information on industry employment and labor force statistics for July 2023, the most current estimates available from the Colorado Department of Labor and Employment. The reference period for the establishment and household surveys was the pay period or week that includes the 12th of the month.

The unemployment rate, labor force, labor force participation, total employment and the number of unemployed are based on a survey of households. The total employment estimate derived from this survey is intended to measure the number of people employed.

Nonfarm payroll jobs estimates are based on a survey of business establishments and government agencies, and are intended to measure the number of jobs, not the number of people employed. Other series based on this survey include private sector average weekly hours, average hourly earnings and average weekly earnings.

The business establishment survey covers about seven times the number of households surveyed and is therefore considered a more reliable indicator of economic conditions. Because the estimates are based on two separate surveys, one measuring jobs by worksite and the other measuring persons employed and unemployed by household, estimates based on these surveys may provide seemingly conflicting results.

###

Supplemental information available in following pages

JULY 2023

EMPLOYMENT SITUATION SUPPLEMENTAL CHARTS

August 18, 2023

This briefing provides information on industry employment and labor force statistics, derived from surveys of business establishments and households. The reference period for these surveys is the pay period or week that includes the 12th of the month. The reference week for July was specifically July 9th – July 15th.

Colorado and U.S. Unemployment Rates Separated by Six-Tenths of a Percentage Point in July

Percent

7

6

5

4

3

2

1

0

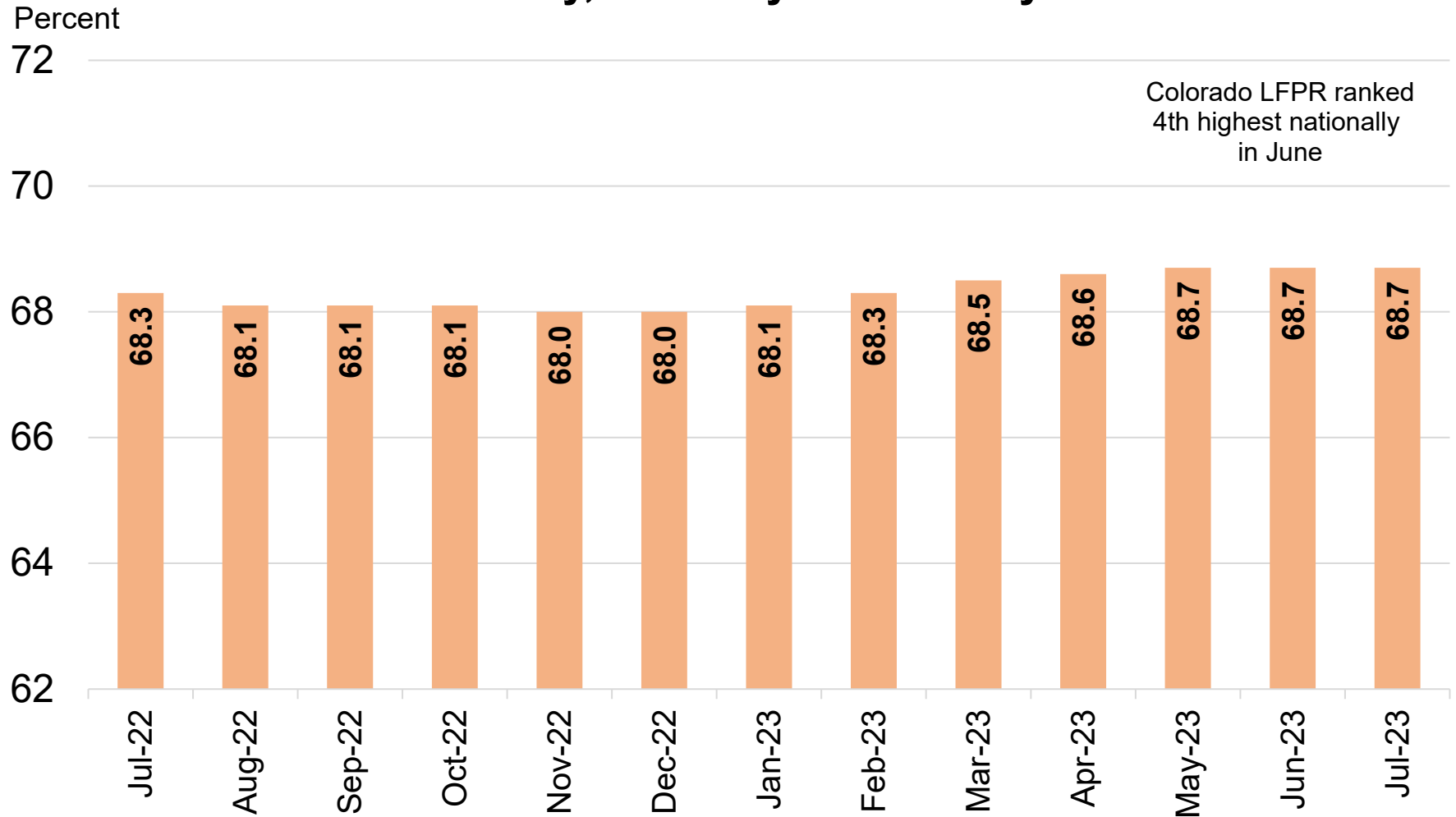


Increase in July unemployment rate due to the gain in the labor force (+3.4k) exceeding the growth in total employment (flat). Number of unemployed Coloradans rose by 3,300 to 95,000. Colorado's unemployment rate has been below 3.0 percent since May 2022.

Source: Colorado Department of Labor and Employment; Bureau of Labor Statistics
Data seasonally adjusted

■ Colorado ■ U.S.

Colorado's Labor Force Participation Rate Unchanged at 68.7 Percent in July, Just Shy of February 2020 Level



Source: Colorado Department of Labor and Employment; Bureau of Labor Statistics

Data seasonally adjusted. Estimates share of Colorado's 16+ population that is in the labor force in a given month.

February 2020 rate was 68.8 percent.

For further information on labor force definitions, go here: <https://www.bls.gov/lau/laufaq.htm>

Colorado's Employment-Population Ratio Decreases Slightly in July

Percent

68

67

66

65

64

63

62

Colorado EPOP ranked
5th highest nationally
in June

66.4

66.3

66.2

66.1

66.1

66.1

66.2

66.3

66.5

66.7

66.8

66.8

66.7

Jul-22

Aug-22

Sep-22

Oct-22

Nov-22

Dec-22

Jan-23

Feb-23

Mar-23

Apr-23

May-23

Jun-23

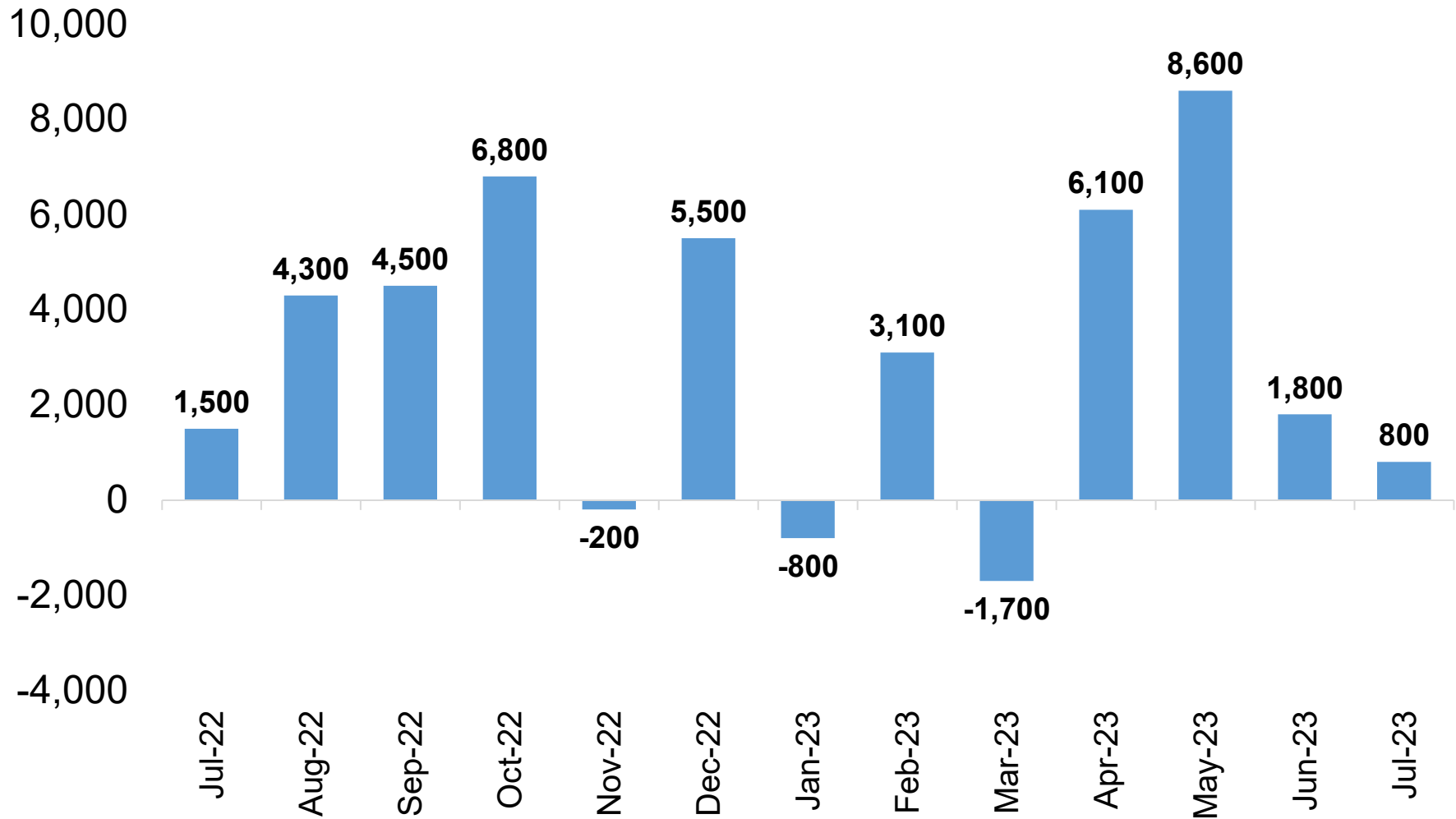
Jul-23

Source: Colorado Department of Labor and Employment; Bureau of Labor Statistics

Data seasonally adjusted. Estimates share of Colorado's 16+ population that is employed in a given month.

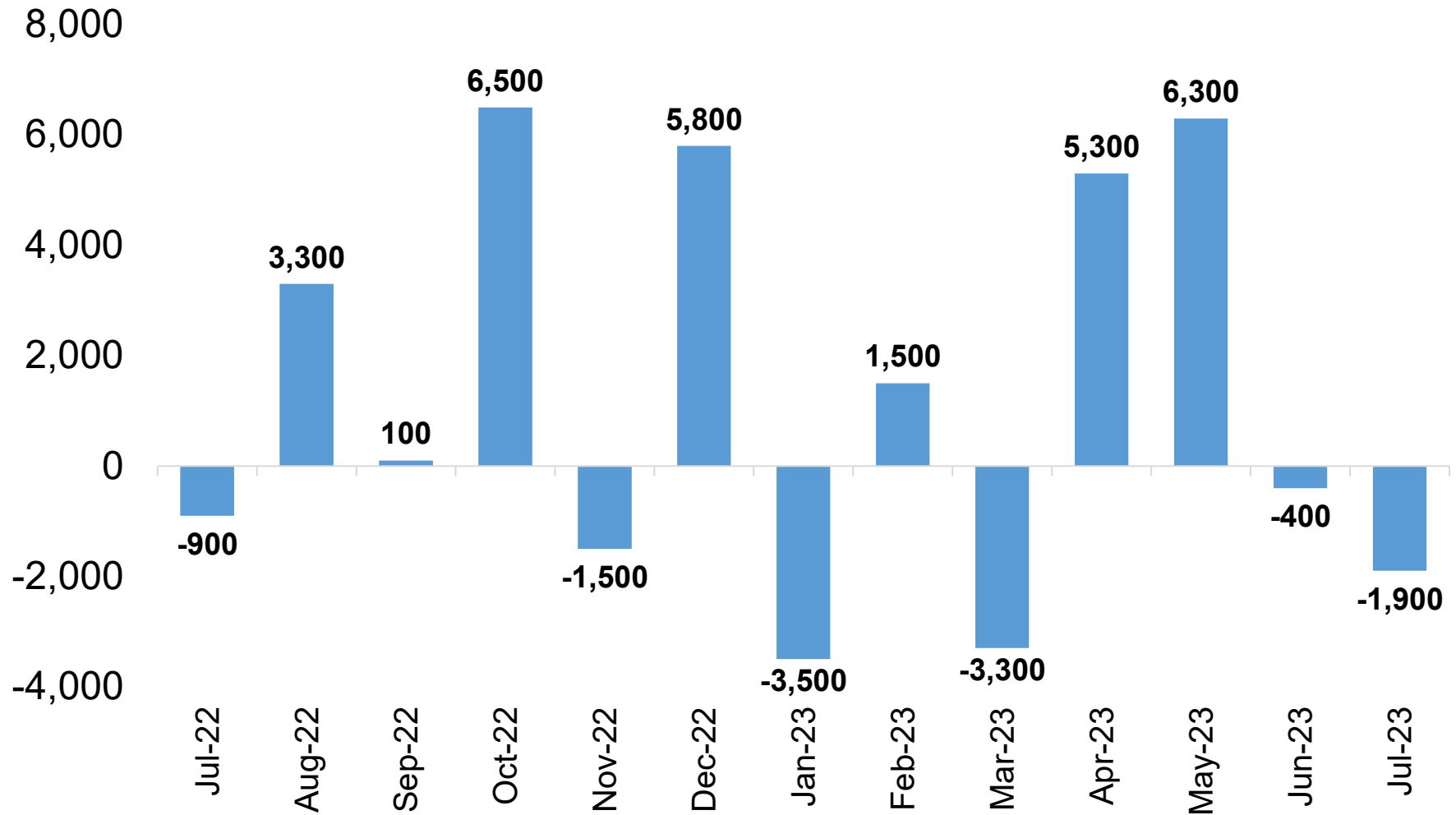
February 2020 rate was 66.6 percent.

Colorado Added 800 Total Nonfarm Jobs in July; June Numbers Revised Down 2,900



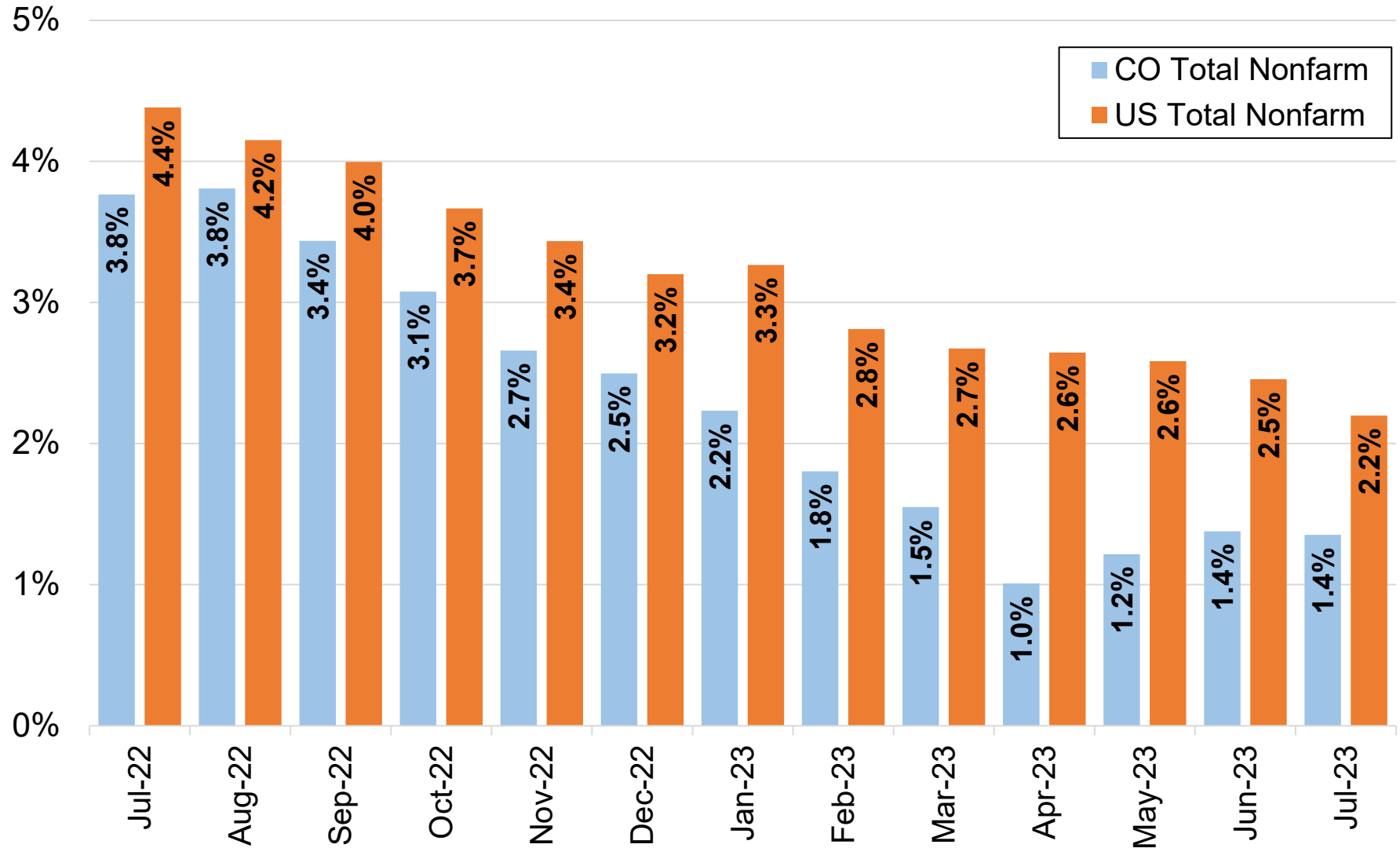
Source: Colorado Department of Labor and Employment; Bureau of Labor Statistics
Data seasonally adjusted

Private Sector Sheds 1,900 Jobs in July; June Figures Revised Down 3,700



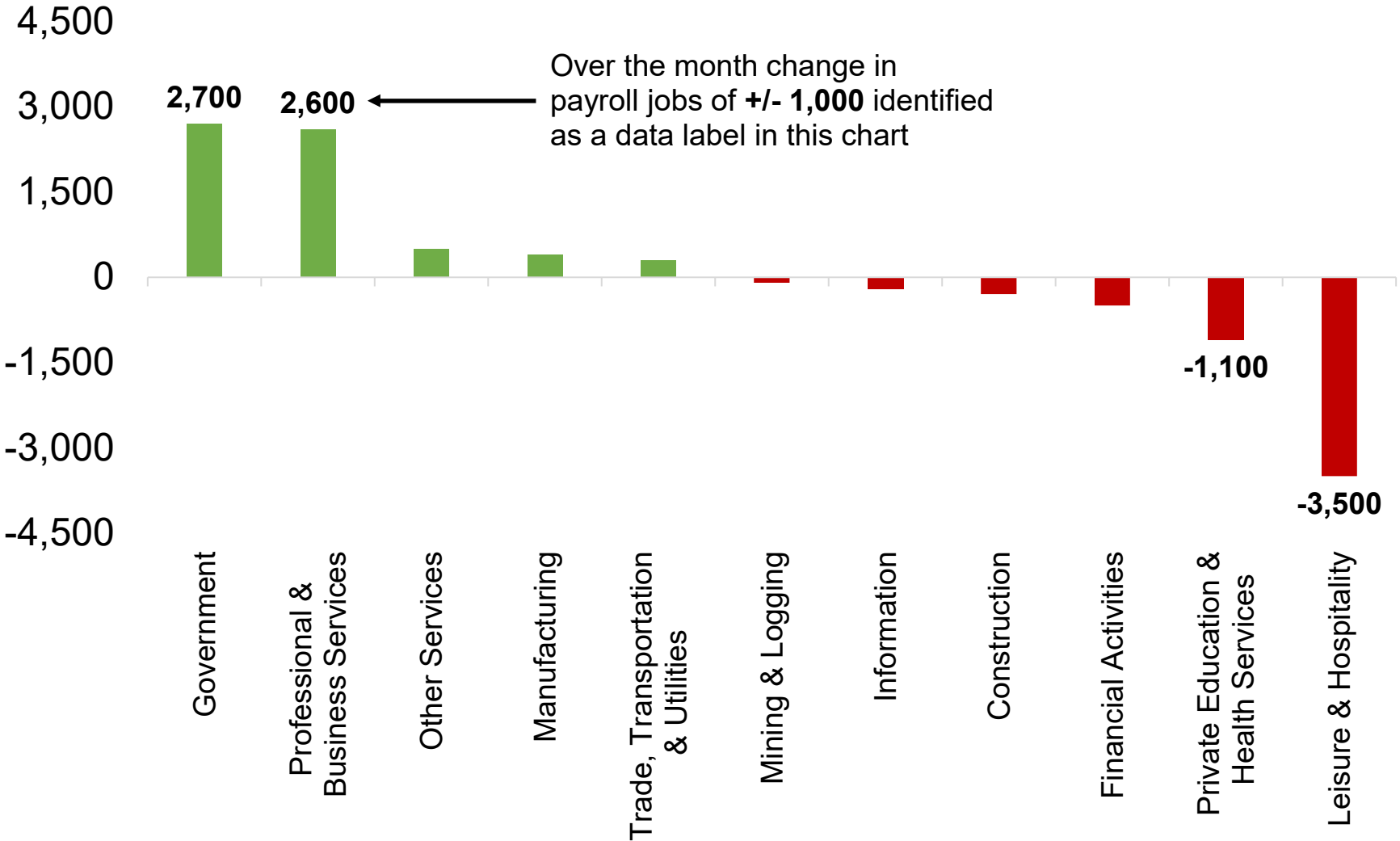
Source: Colorado Department of Labor and Employment; Bureau of Labor Statistics
Data seasonally adjusted

Colorado and U.S. Over the Year Growth Rates for Total Nonfarm Employment



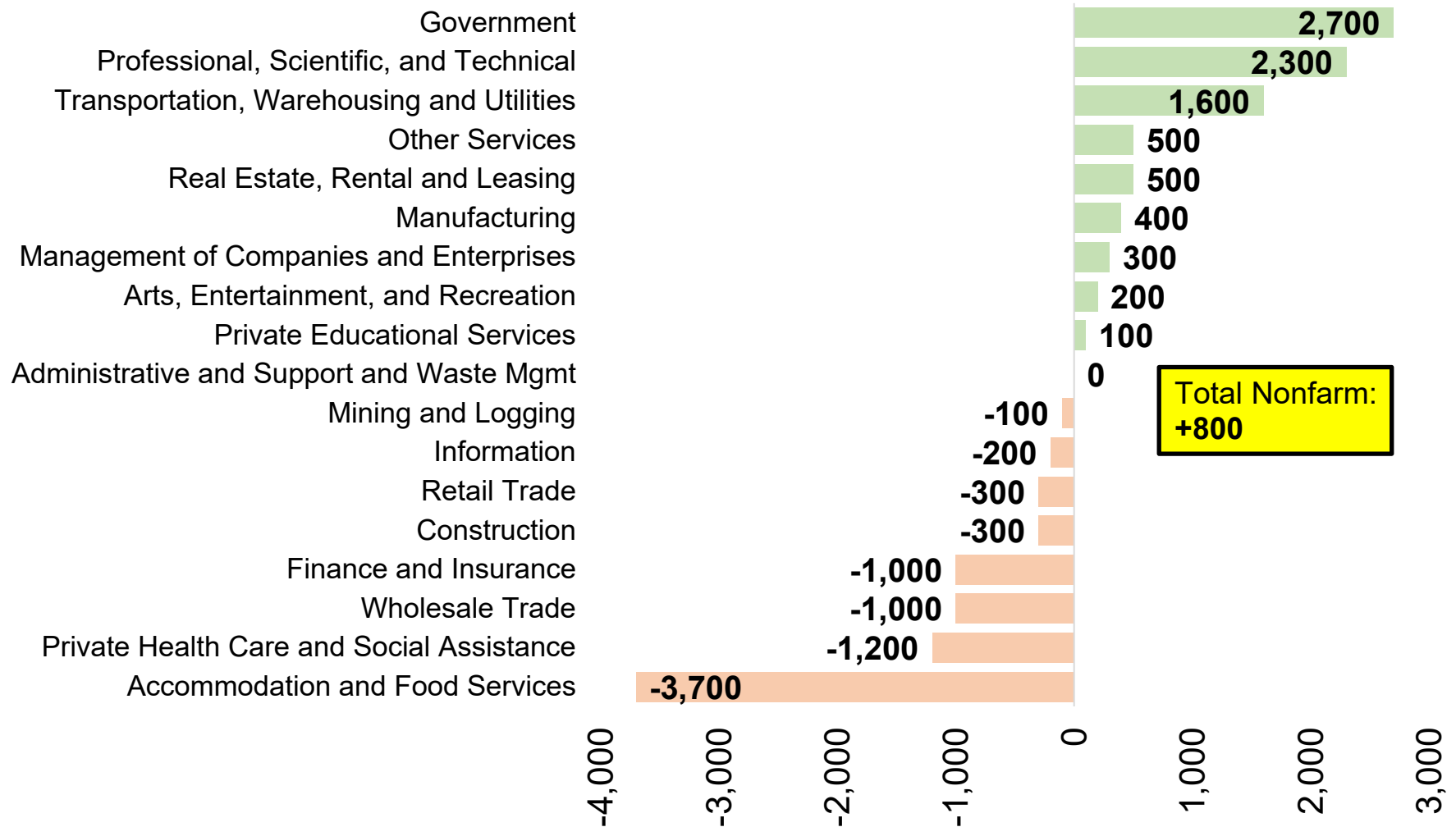
Source: Colorado Department of Labor and Employment; Bureau of Labor Statistics
Data seasonally adjusted

Mixed Industry Level Growth in July; Five Supersectors Gained Jobs vs. Six That Lost Jobs



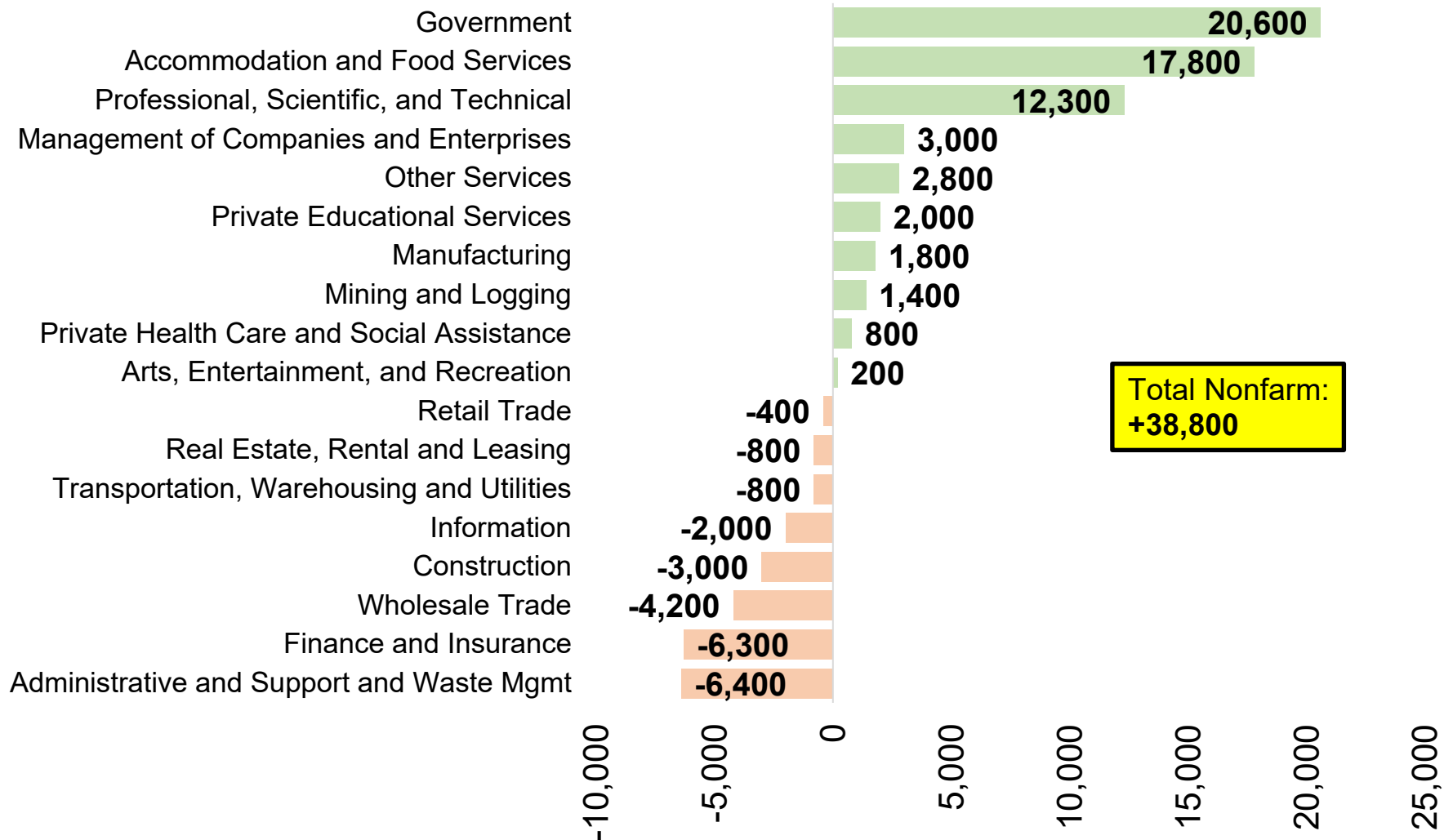
Source: Colorado Department of Labor and Employment; Bureau of Labor Statistics
Data seasonally adjusted

Change in Payroll Jobs in July 2023, by Industry Sector



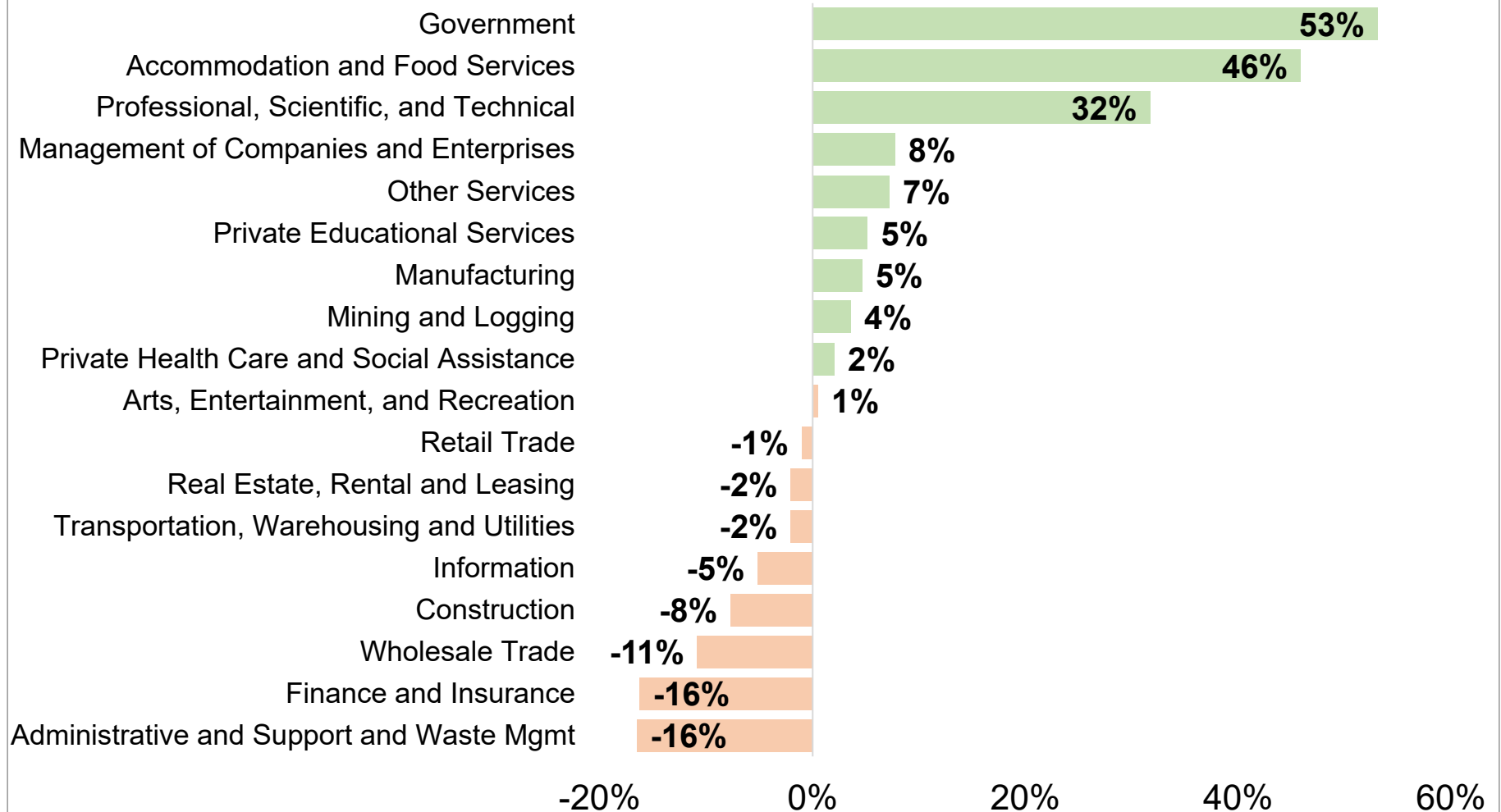
Source: Colorado Department of Labor and Employment; Bureau of Labor Statistics
Data seasonally adjusted, June 2023 to July 2023

Change in Payroll Jobs Over Past 12 Months, by Industry Sector



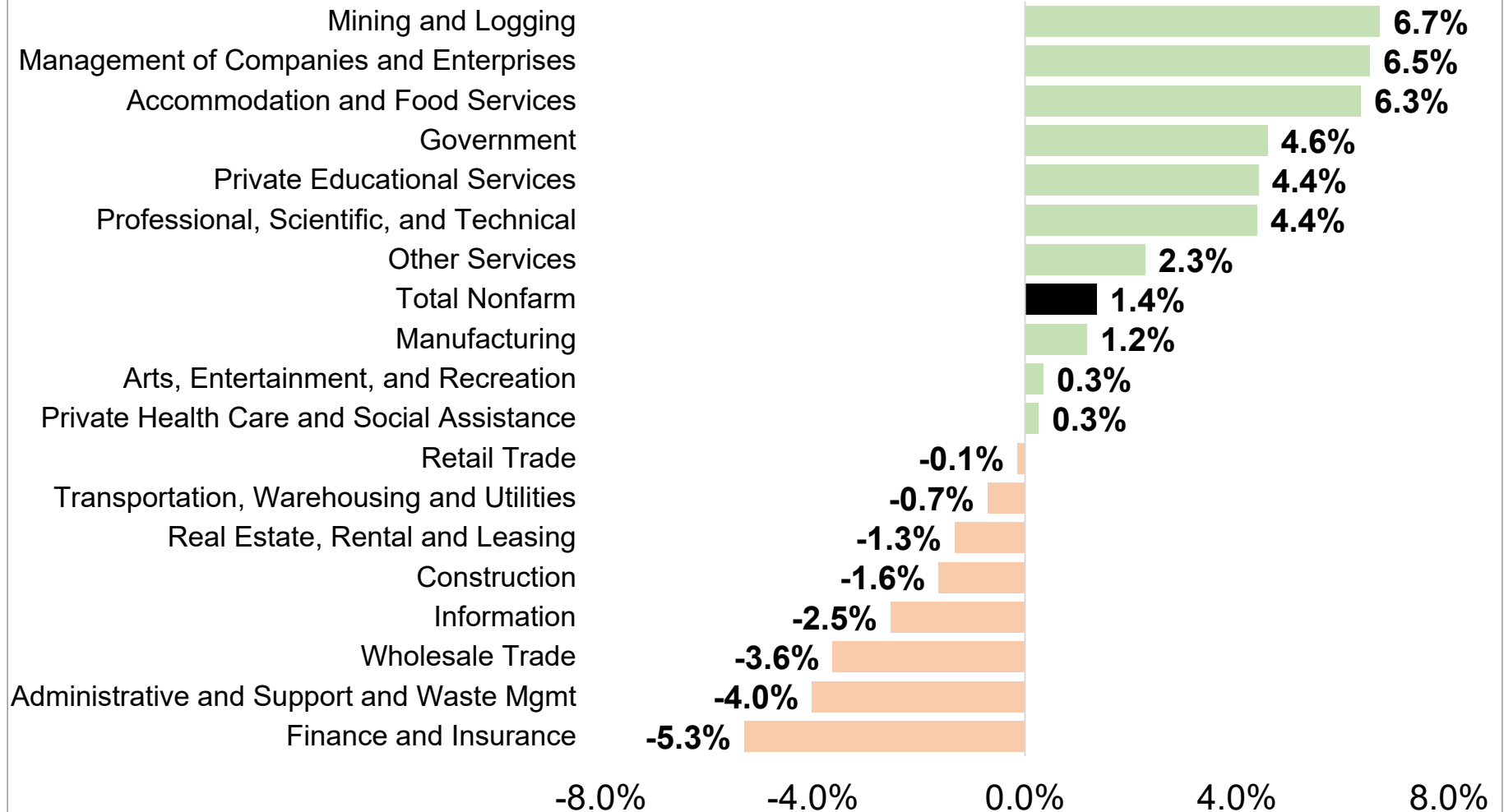
Source: Colorado Department of Labor and Employment; Bureau of Labor Statistics
Data seasonally adjusted, July 2022 to July 2023

Percent Contribution to Total Colorado Nonfarm Payroll Job Change Over Past 12 Months, by Industry Sector



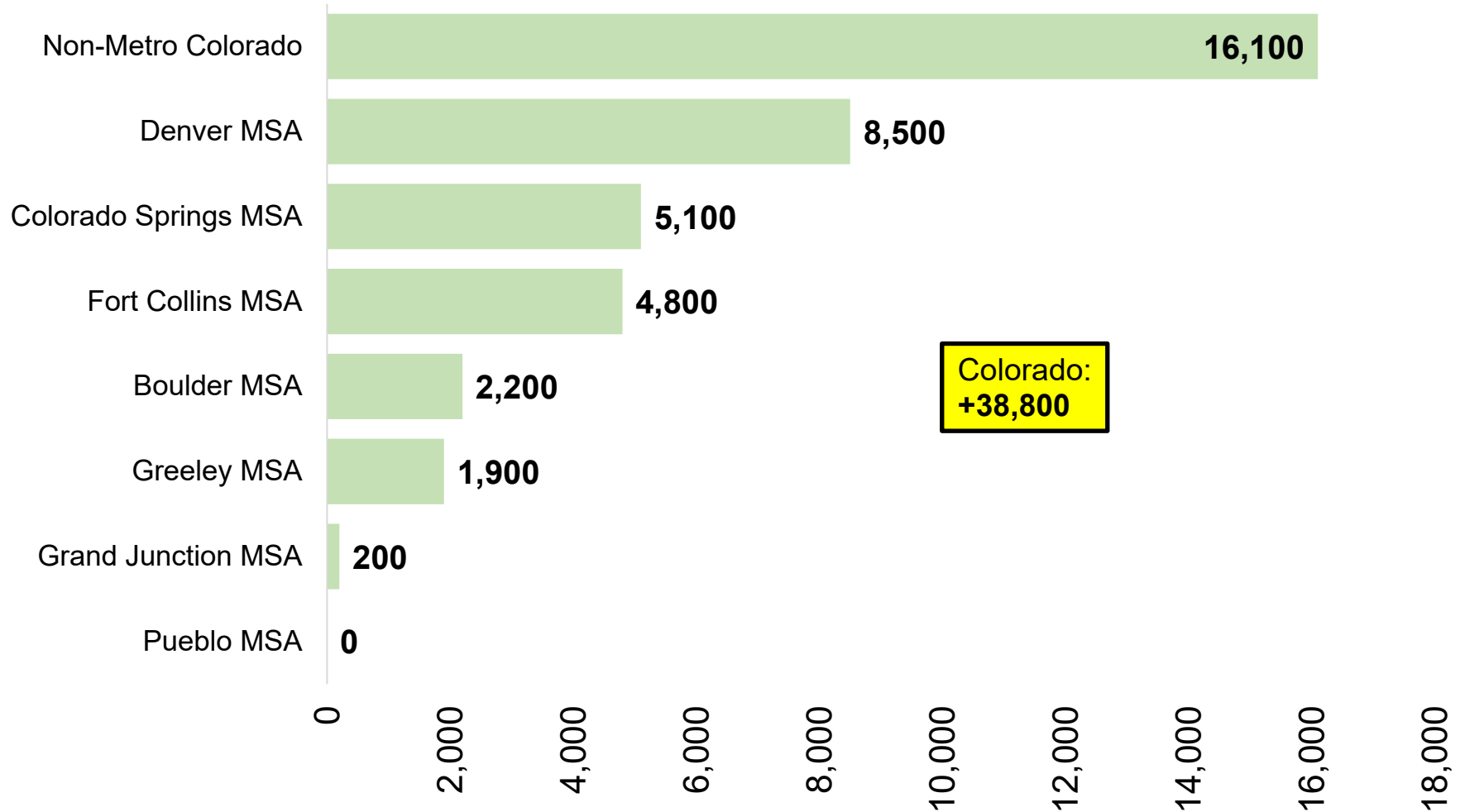
Source: Colorado Department of Labor and Employment; Bureau of Labor Statistics
Data seasonally adjusted, July 2022 to July 2023

July 2023 Over the Year Growth Rates, by Industry Sector



Source: Colorado Department of Labor and Employment; Bureau of Labor Statistics
Data seasonally adjusted, July 2022 to July 2023

Change in Payroll Jobs Over Past 12 Months, by Colorado Substate Area

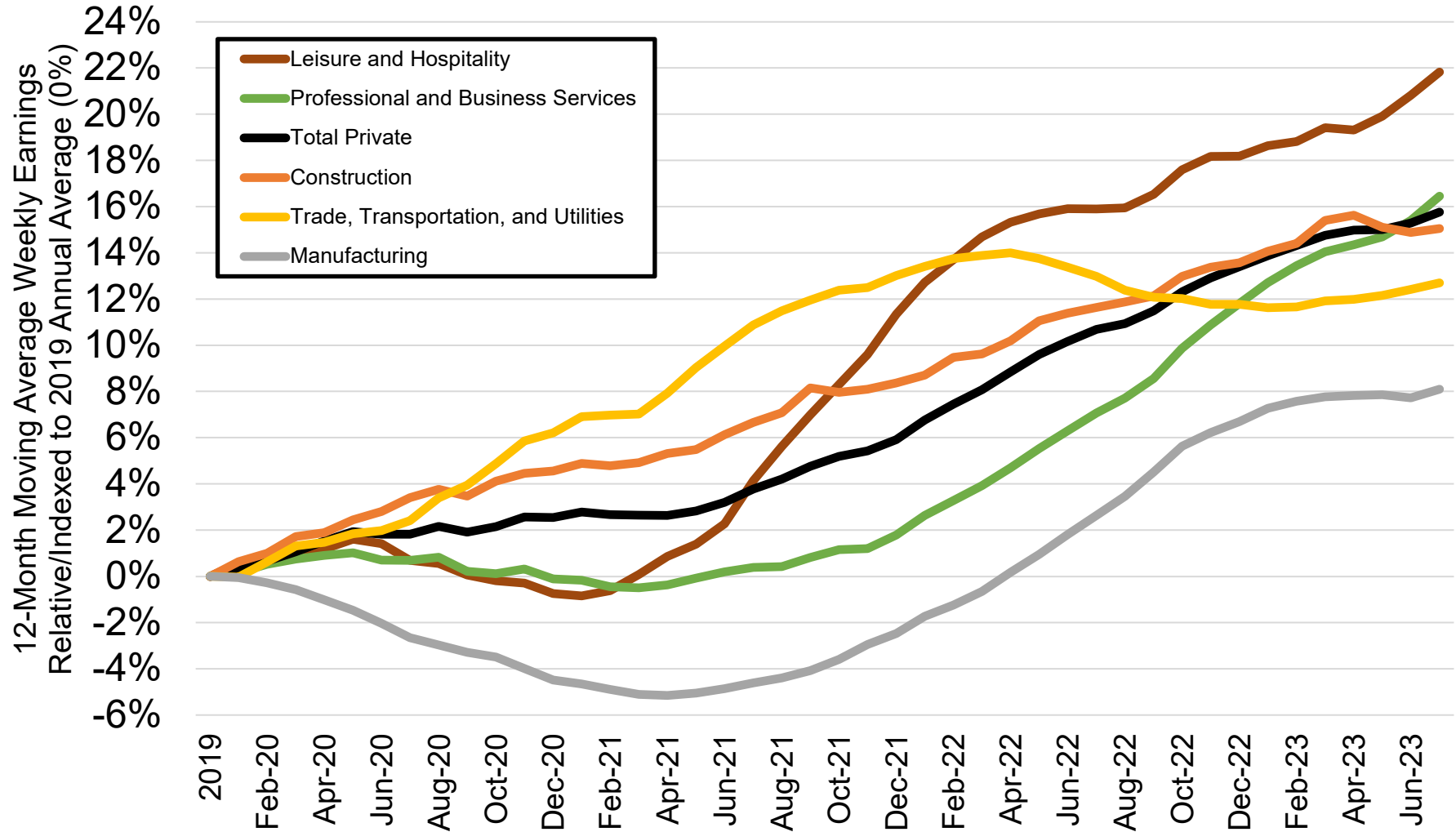


Source: Colorado Department of Labor and Employment; Bureau of Labor Statistics

Data seasonally adjusted, July 2022 to July 2023

Note: MSA = Metropolitan Statistical Area; Non-Metro Colorado = residual of state that is not an MSA (47 counties)

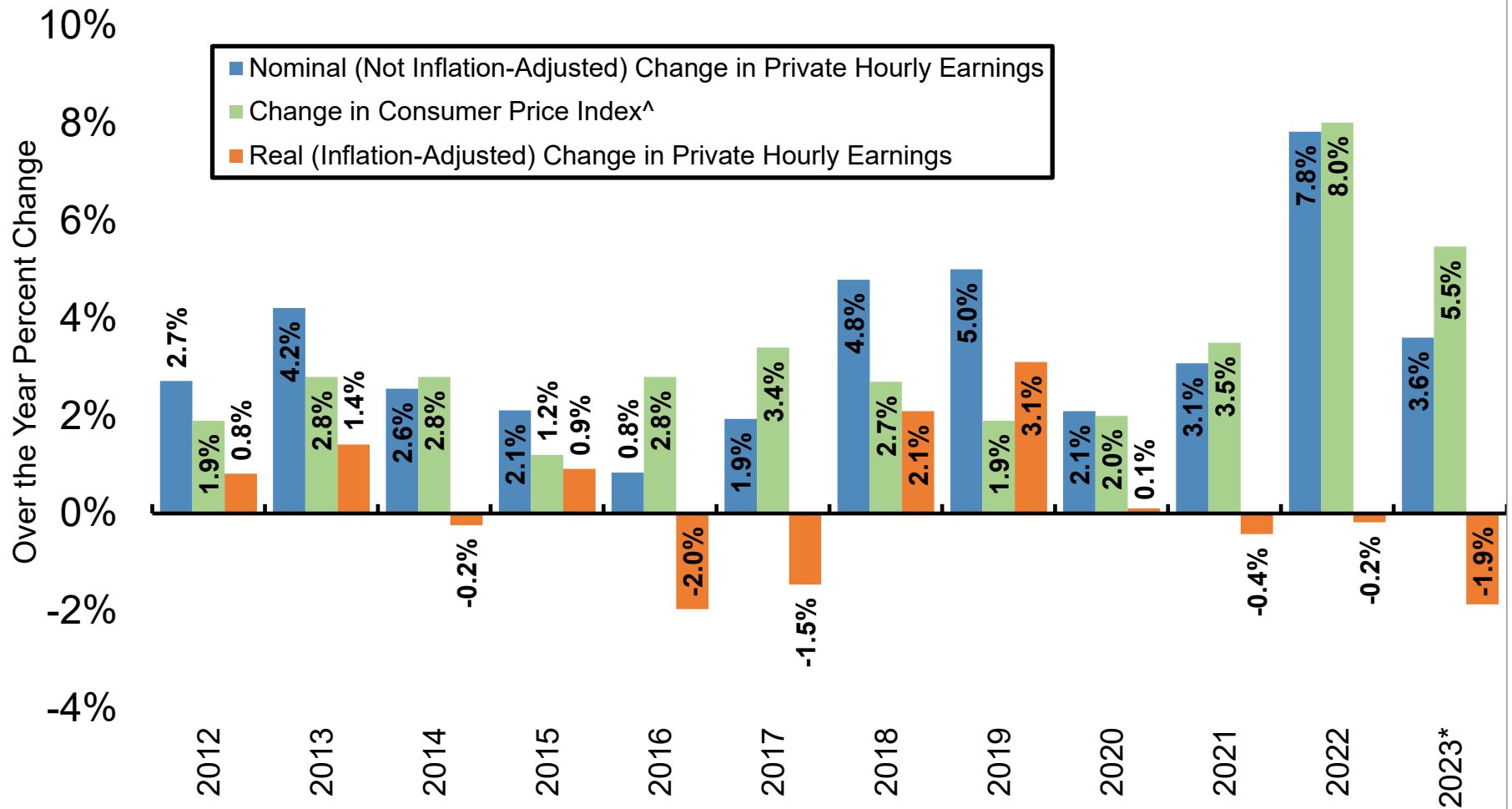
Percent Change in Average Weekly Earnings Since 2019, by Select Colorado Industry



Source: Colorado Department of Labor and Employment; Bureau of Labor Statistics

Data not seasonally adjusted. Note: each month on this chart represents a 12-month moving average and measures the percent change in average weekly earnings compared to the 2019 annual average for that industry.

Nominal and Real Percent Change in Colorado's Private Average Hourly Earnings Since 2012

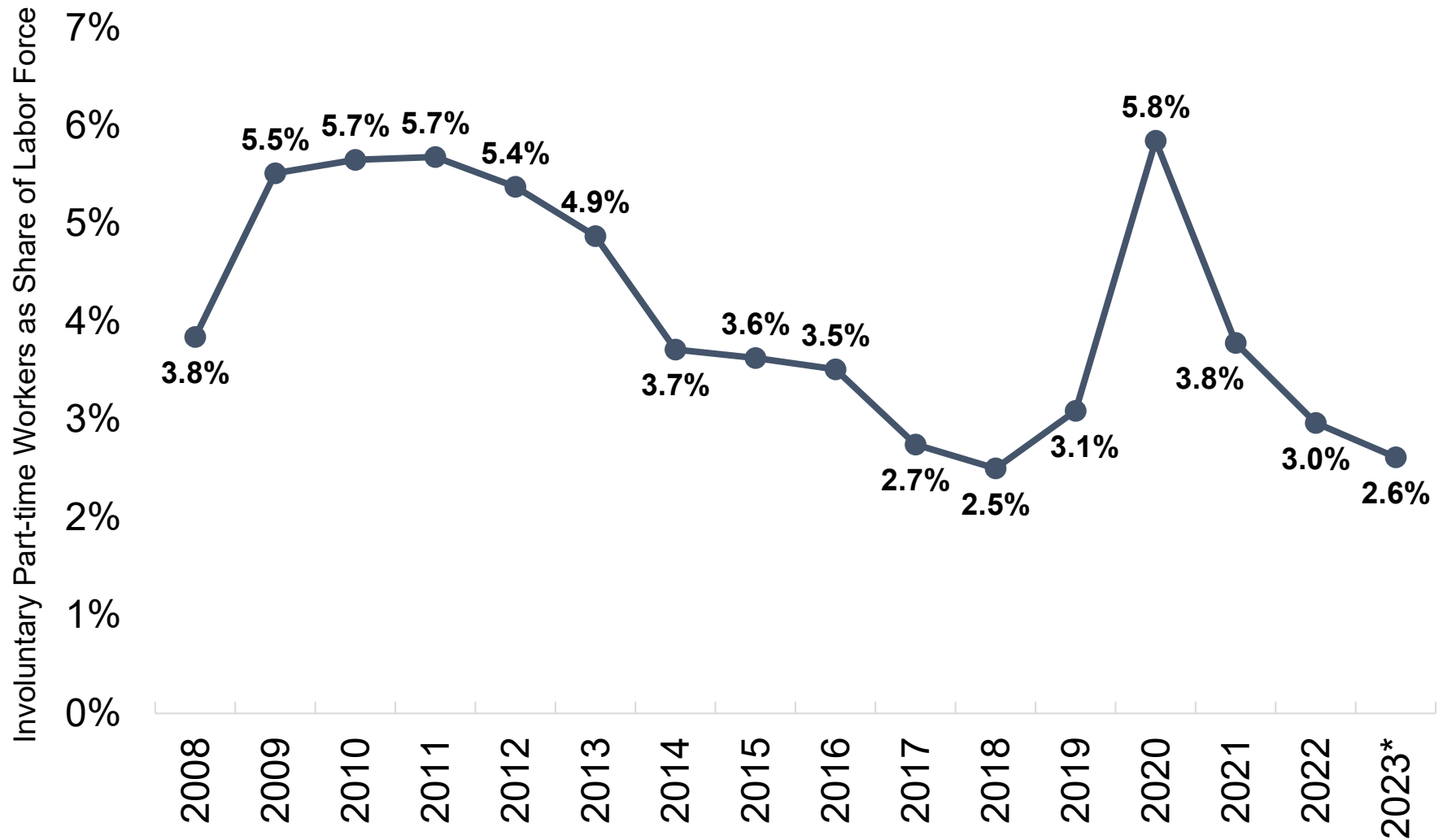


Source: Colorado Department of Labor and Employment estimates; Bureau of Labor Statistics

[^]Note: Denver-Aurora-Lakewood CPI-U estimates were utilized to adjust average hourly earnings for inflation.

That data is available here: <https://www.bls.gov/cpi/regional-resources.htm>. *2023 nominal earnings growth is measured using data for January to July compared to the same period the year prior, while real earnings were adjusted using the average over-the-year change in CPI-U for January, March, May, and July 2023.

Involuntary Part-Time Workers as Share of Labor Force

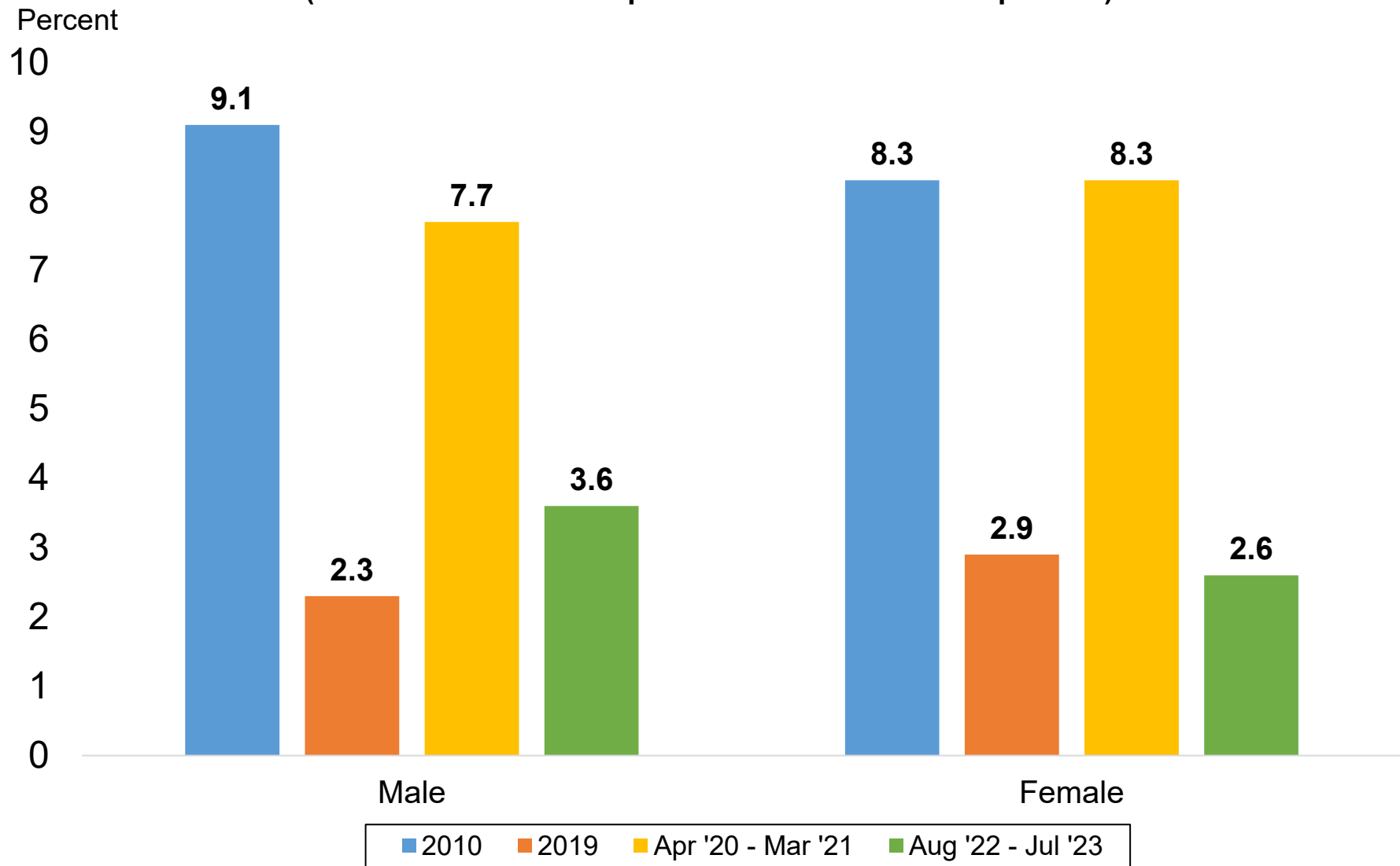


Source: Current Population Survey

Data not seasonally adjusted. Involuntary part-time workers are those individuals who are working part-time hours (34 hours or less), but prefer full-time hours (35+ hours).

*Average through the first seven months of 2023.

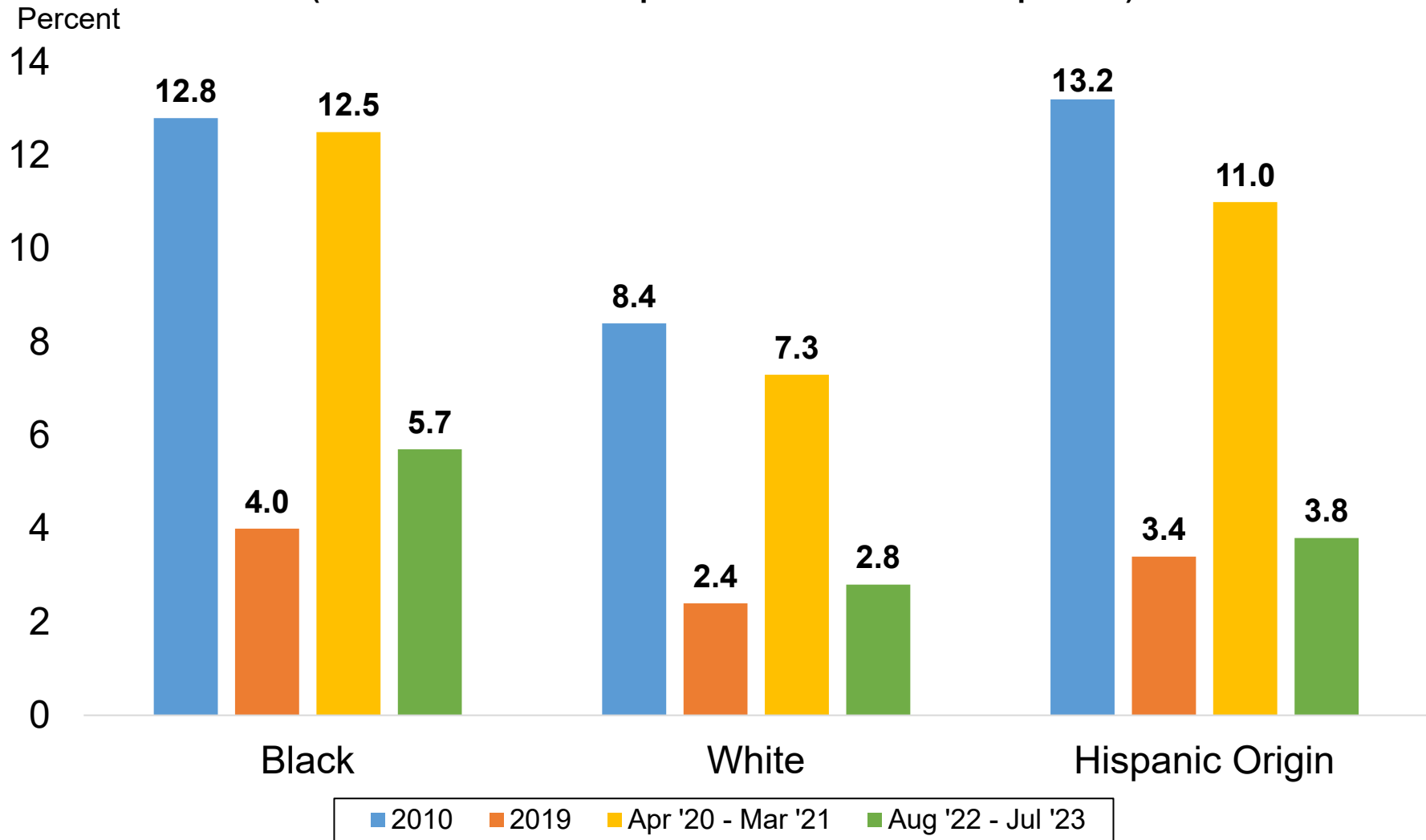
Unemployment Rates by Gender (Most recent 12-month period available vs. select periods)



Source: Current Population Survey

Data not seasonally adjusted. Unemployment rates by gender for individuals 16 years and older.

Unemployment Rates by Race & Ethnicity (Most recent 12-month period available vs. select periods)

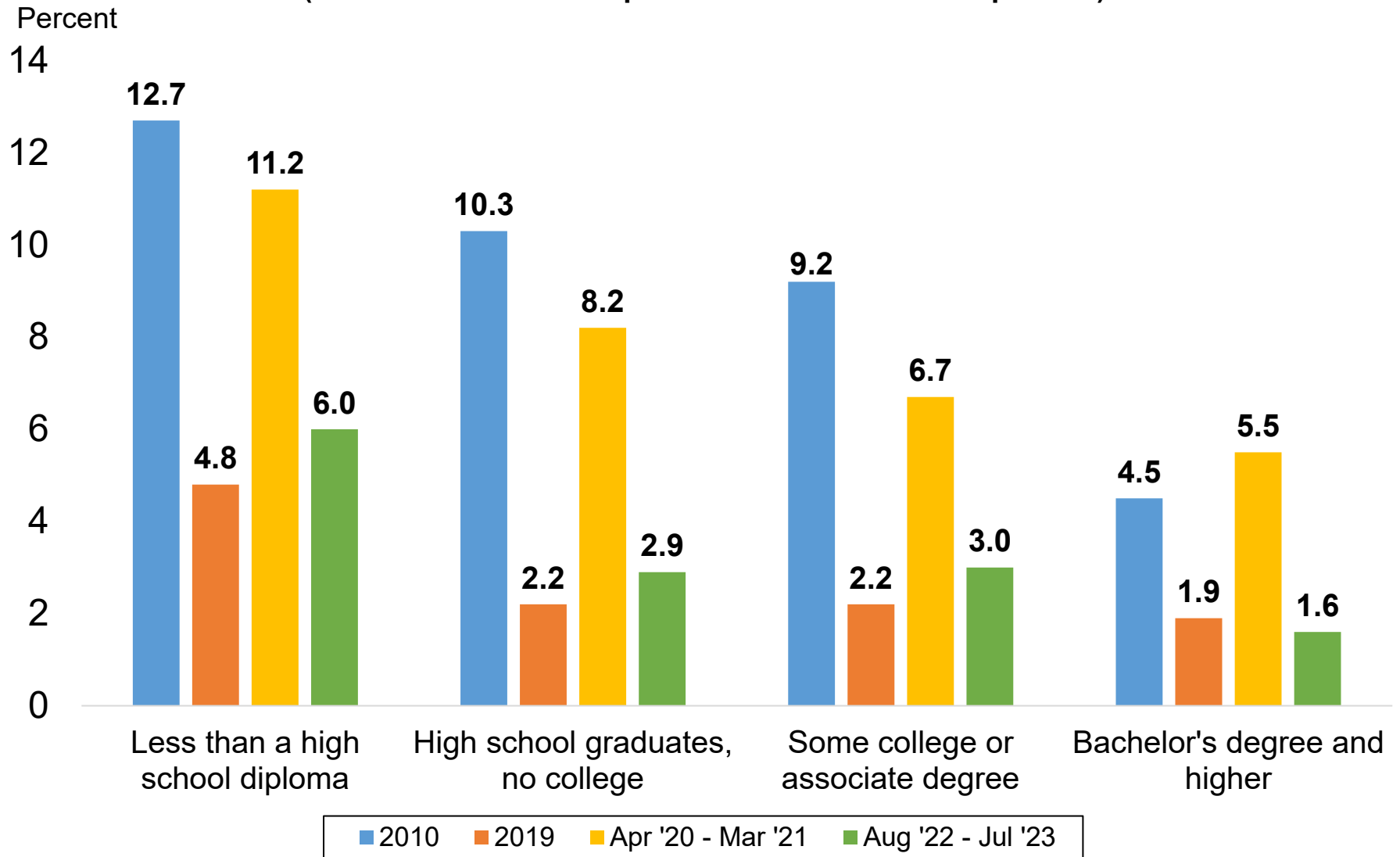


Source: Current Population Survey

Data not seasonally adjusted. Other race categories excluded due to small sample size. Hispanic origin category is not mutually exclusive (i.e. hispanic and non-hispanic ethnicities are represented in both race categories).

Unemployment Rates by Educational Attainment

(Most recent 12-month period available vs. select periods)

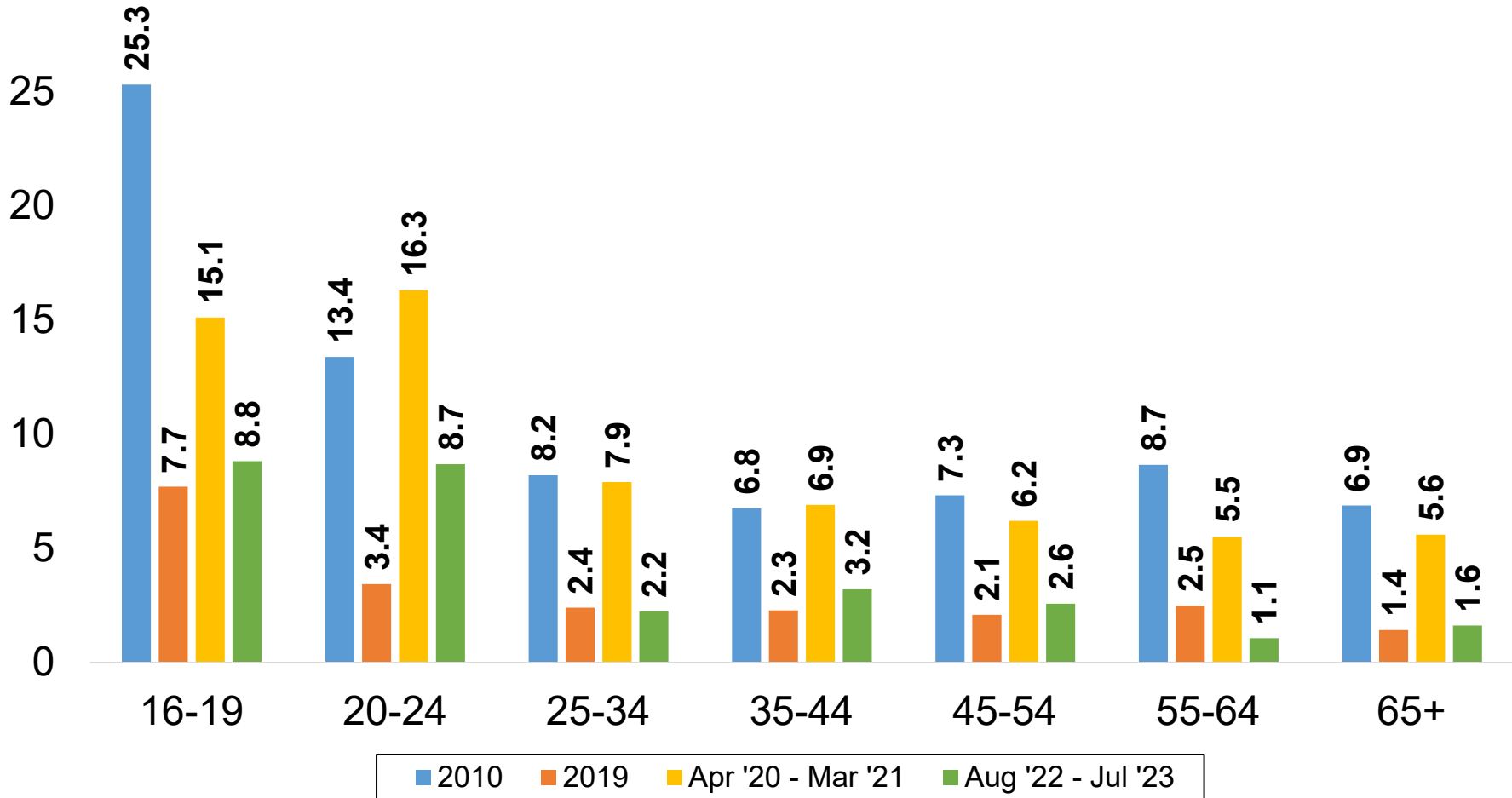


Source: Current Population Survey

Data not seasonally adjusted. Unemployment rates by educational attainment for individuals 25 years and over.

Unemployment Rates by Age Group (Most recent 12-month period available vs. select periods)

Percent
30



Source: Current Population Survey
Data not seasonally adjusted.

Colorado Labor Force Participation Rates and Employment-Population Ratios, Ages 25 to 54

(Most recent 12-month period available vs. select years)

Percent

88

86

84

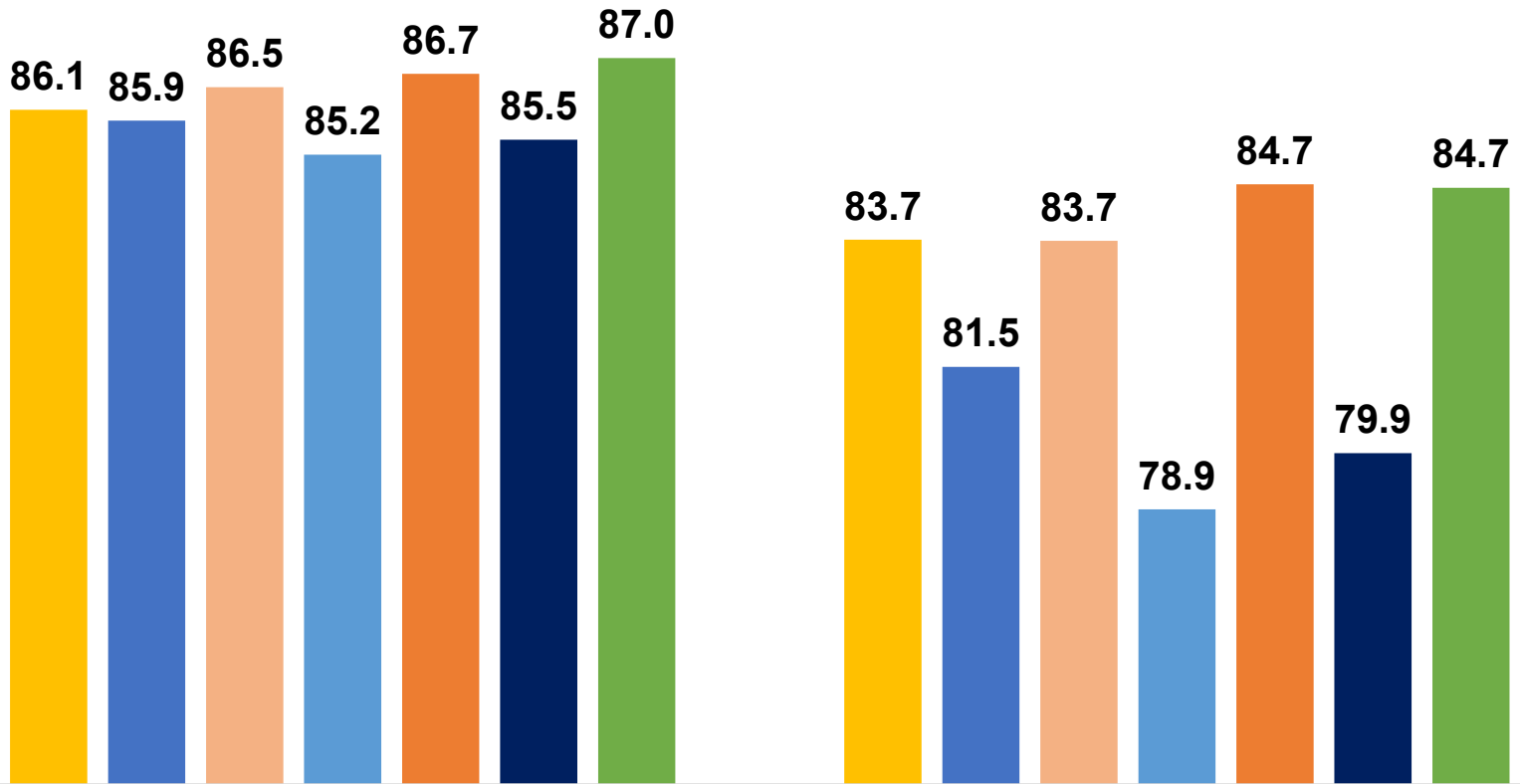
82

80

78

76

74



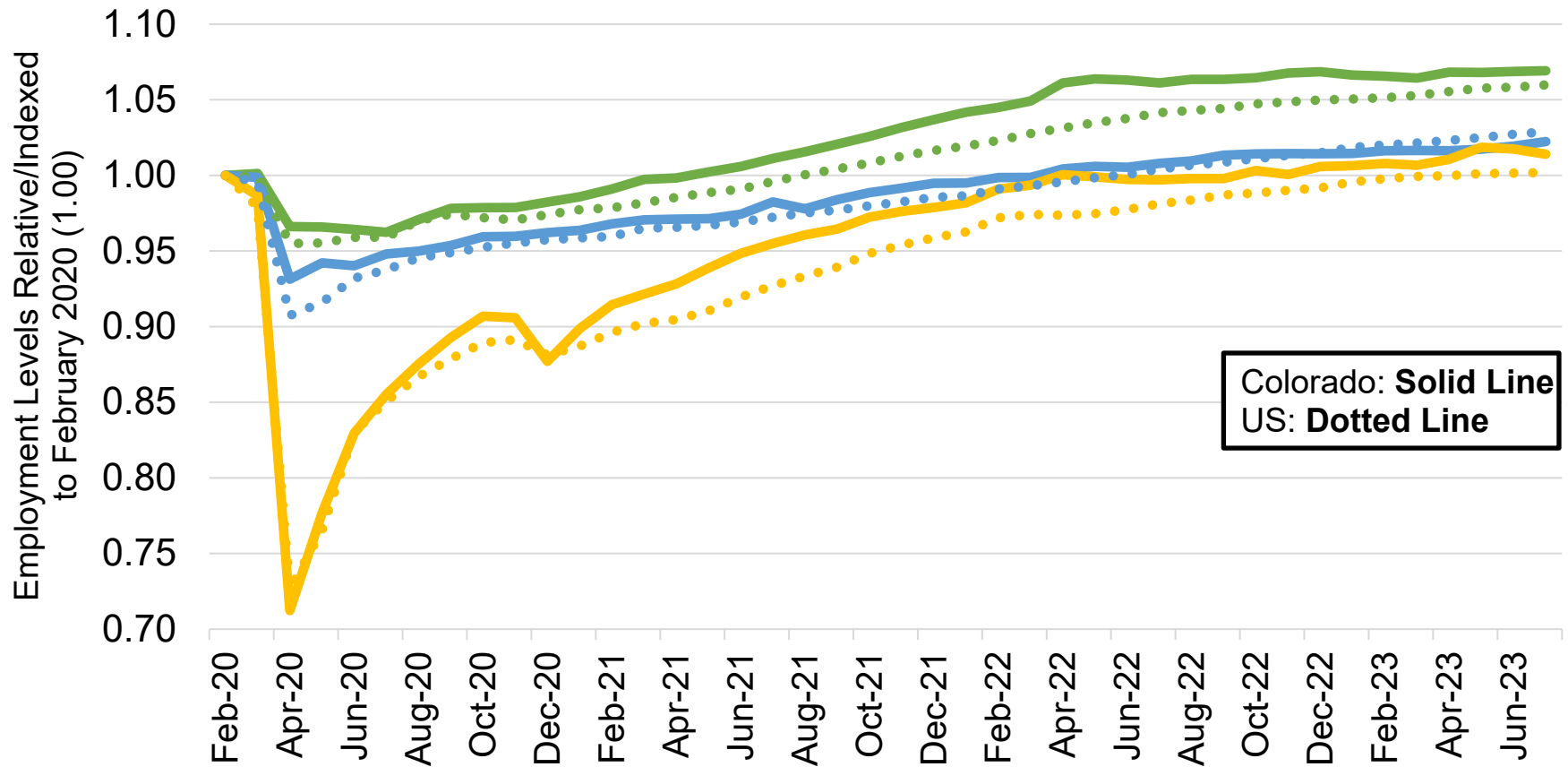
Labor Force Participation Rate

Employment-Population Ratio

■ 2001 ■ 2003 ■ 2006 ■ 2010 ■ 2019 ■ 2020 ■ Aug '22 - Jul '23

Source: Current Population Survey
Data not seasonally adjusted.

Job Loss and Recovery by Low, Medium, and High Wage Industries (Colorado & U.S.)

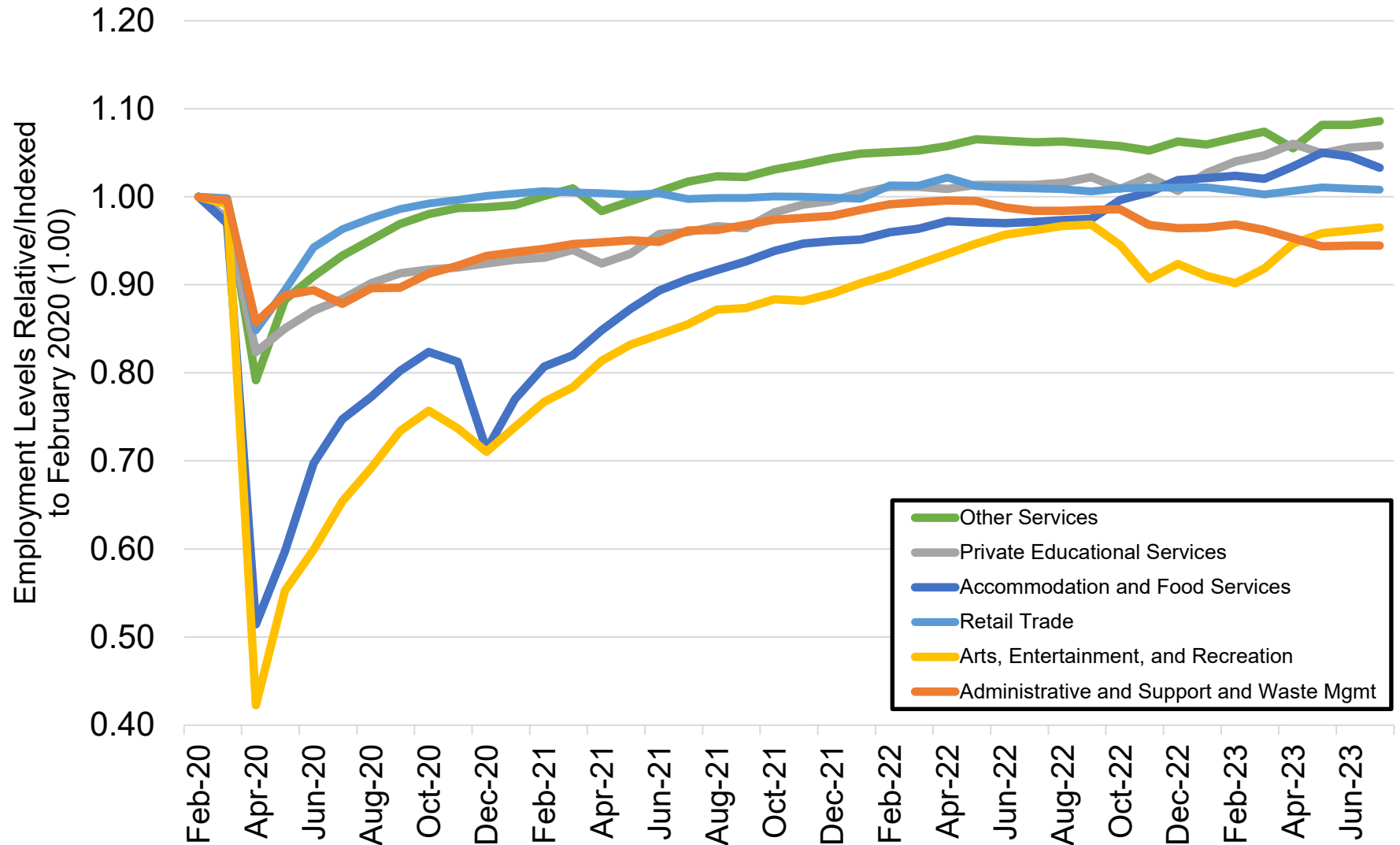


Source: Colorado Department of Labor and Employment; Bureau of Labor Statistics

Data seasonally adjusted. Note: low, medium, and high wage industries are determined by the 2019 state-level average weekly wage estimates from the Quarterly Census of Employment and Wages. **Low wage industries include:** retail trade; admin support/waste mgmt; private education services; arts, entertainment, and recreation; accommodation and food services; and other services. **Medium wage industries include:** construction; manufacturing; transportation, warehousing, and utilities; real estate, rental, and leasing; private health care and social assistance; state government; and local government.

High wage industries include: mining and logging; wholesale trade; information; finance and insurance; professional and technical services; management of companies; and federal government.

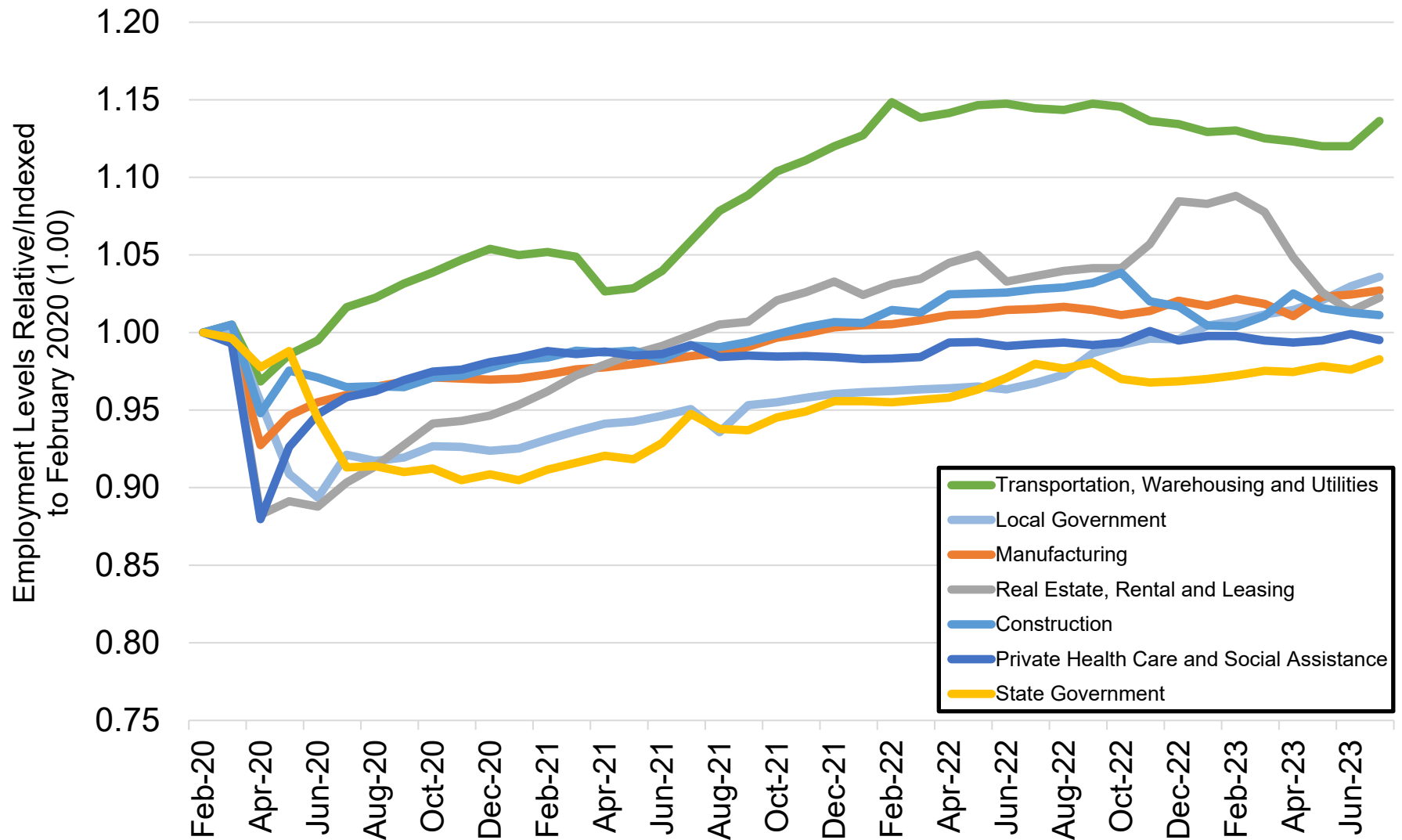
Colorado Job Loss & Recovery by Low Wage Industries



Source: Colorado Department of Labor and Employment; Bureau of Labor Statistics

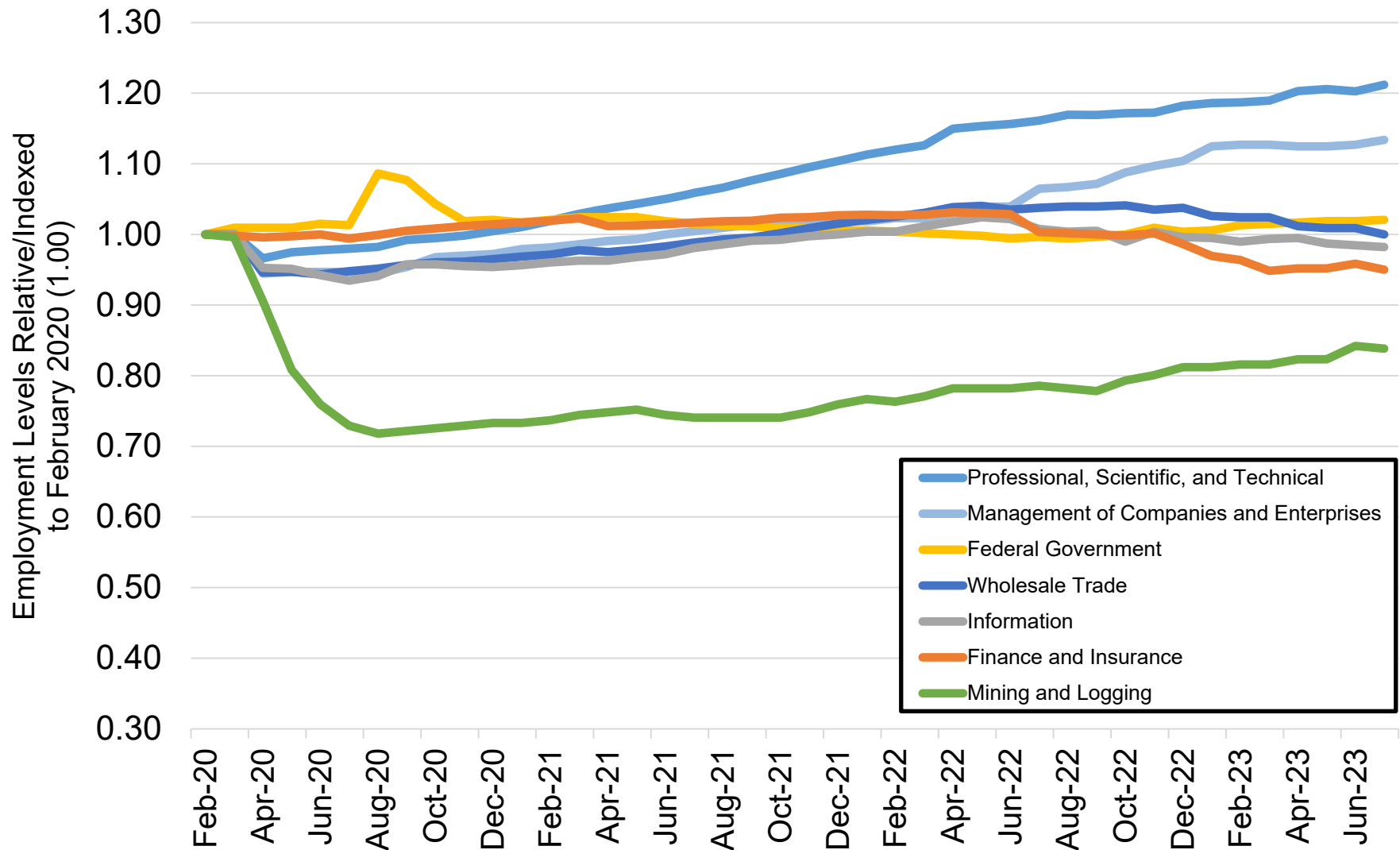
Data seasonally adjusted. Note: low wage industries are determined by the 2019 state-level average weekly wage estimates from the Quarterly Census of Employment and Wages.

Colorado Job Loss & Recovery by Medium Wage Industries



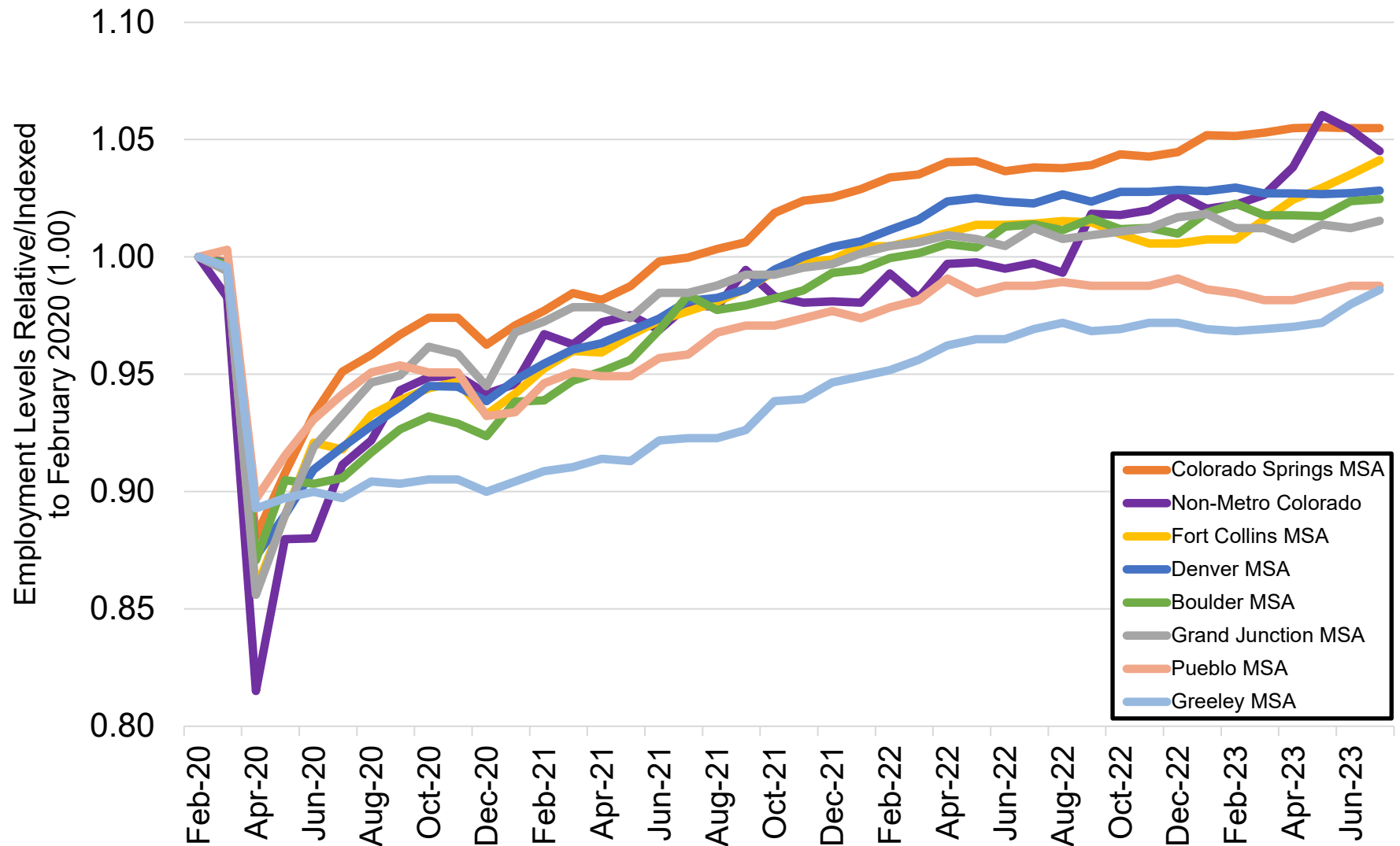
Source: Colorado Department of Labor and Employment; Bureau of Labor Statistics
 Data seasonally adjusted. Note: medium wage industries are determined by the 2019 state-level average weekly wage estimates from the Quarterly Census of Employment and Wages.

Colorado Job Loss & Recovery by High Wage Industries



Source: Colorado Department of Labor and Employment; Bureau of Labor Statistics
 Data seasonally adjusted. Note: high wage industries are determined by the 2019 state-level average weekly wage estimates from the Quarterly Census of Employment and Wages.

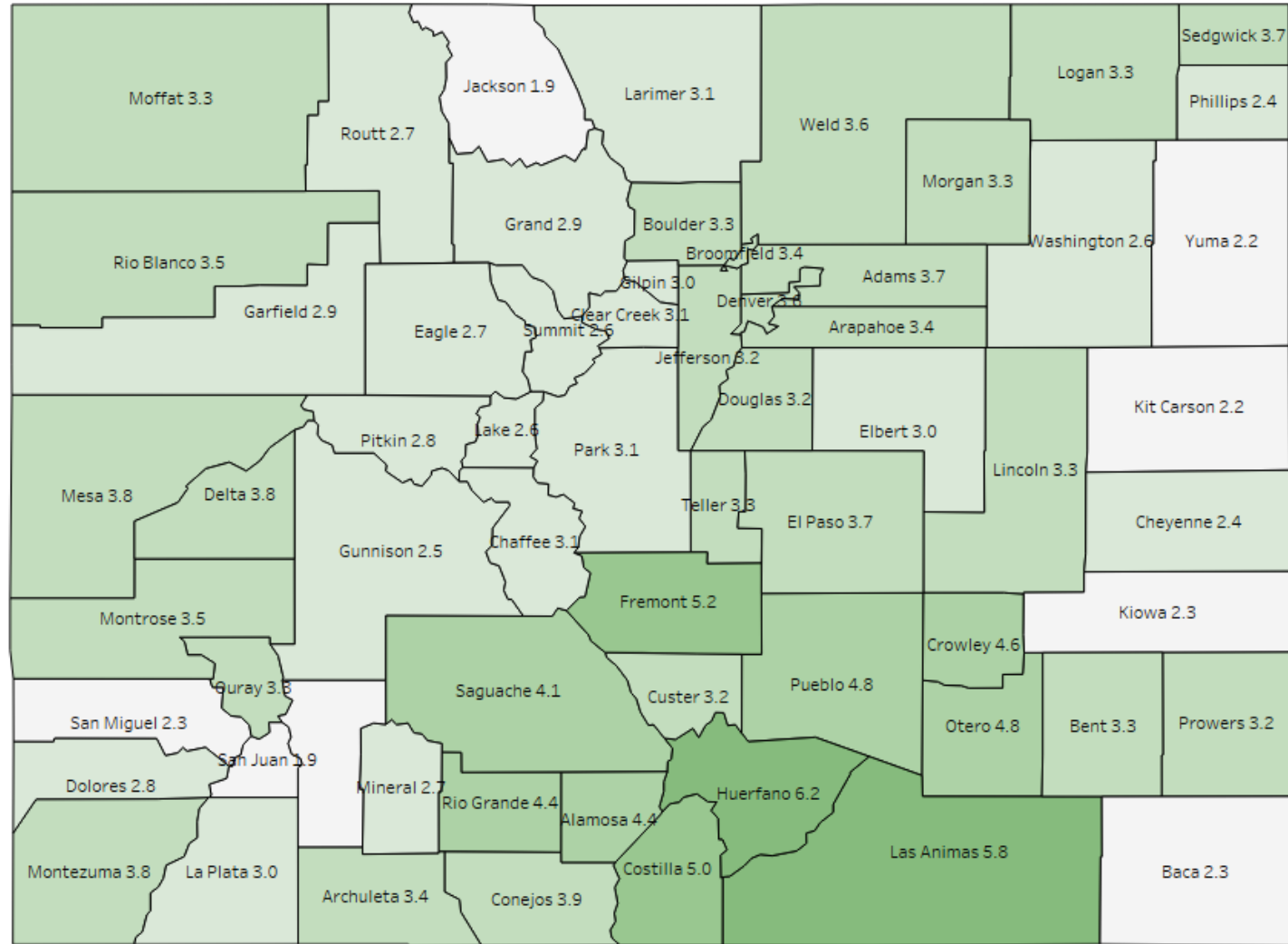
Colorado Job Loss & Recovery by Colorado Substate Area



Source: Colorado Department of Labor and Employment; Bureau of Labor Statistics

Data seasonally adjusted. Note: MSA = Metropolitan Statistical Area; Non-Metro Colorado = residual of state that is not an MSA (47 counties).

County Unemployment Rates July 2023



LABOR FORCE SUMMARY
COLORADO
Preliminary Estimates for July 2023

LABOR FORCE DATA (VALUES IN THOUSANDS)					
SEASONALLY ADJUSTED:				Change from last:	
	Jul-23	Jun-23	Jul-22	Month	Year
Total Civilian Labor Force	3,252.5	3,249.2	3,197.9	3.4	54.6
Unemployment	95.0	91.7	86.9	3.3	8.1
Unemployment Rate (%)	2.9	2.8	2.7	0.1	0.2
Employment	3,157.5	3,157.5	3,111.0	0.0	46.5
UNADJUSTED FOR SEASONALITY:				Change from last:	
	Jul-23	Jun-23	Jul-22	Month	Year
Total Civilian Labor Force	3,264.0	3,254.5	3,207.2	9.4	56.8
Unemployment	113.2	109.1	92.6	4.1	20.6
Unemployment Rate (%)	3.5	3.4	2.9	0.1	0.6
Employment	3,150.8	3,145.5	3,114.6	5.3	36.2

WAGE AND SALARY EMPLOYMENT DATA (VALUES IN THOUSANDS)					
SEASONALLY ADJUSTED:				Change from last:	
	Jul-23	Jun-23	Jul-22	Month	Year
Mining & Logging	22.3	22.4	20.9	-0.1	1.4
Construction	181.0	181.3	184.0	-0.3	-3.0
Manufacturing	155.6	155.2	153.8	0.4	1.8
Trade, Transportation, & Utilities	496.5	496.2	501.9	0.3	-5.4
Information	76.6	76.8	78.6	-0.2	-2.0
Financial Activities	171.7	172.2	178.8	-0.5	-7.1
Professional & Business Services	495.1	492.5	486.2	2.6	8.9
Educational & Health Services	355.2	356.3	352.4	-1.1	2.8
Leisure & Hospitality	356.7	360.2	338.7	-3.5	18.0
Other Services	126.3	125.8	123.5	0.5	2.8
Government	470.8	468.1	450.2	2.7	20.6
TOTAL NONAG	2,907.8	2,907.0	2,869.0	0.8	38.8
Labor Disputants	0.0	0.0	0.0	0.0	0.0
UNADJUSTED FOR SEASONALITY:				Change from last:	
	Jul-23	Jun-23	Jul-22	Month	Year
Mining & Logging	22.7	22.4	21.0	0.3	1.7
Construction	186.3	187.0	188.7	-0.7	-2.4
Manufacturing	156.2	155.7	154.9	0.5	1.3
Trade, Transportation, & Utilities	494.9	496.5	500.3	-1.6	-5.4
Information	77.2	77.4	79.0	-0.2	-1.8
Financial Activities	172.7	172.5	179.8	0.2	-7.1
Professional & Business Services	501.8	496.2	494.5	5.6	7.3
Educational & Health Services	354.4	356.2	349.8	-1.8	4.6
Leisure & Hospitality	376.0	374.6	357.4	1.4	18.6
Other Services	127.4	127.5	126.3	-0.1	1.1
Government	454.7	467.8	431.5	-13.1	23.2
TOTAL NONAG	2,924.3	2,933.8	2,883.2	-9.5	41.1
Labor Disputants	0.0	0.0	0.0	0.0	0.0

Source: Colorado Department of Labor & Employment; Bureau of Labor Statistics

Not Seasonally Adjusted Labor Force

	July 2023				June 2023			
	Labor Force	Employment	Unemployment	Rate	Labor force	Employment	Unemployment	Rate
Colorado	3,263,952	3,150,767	113,185	3.5	3,254,512	3,145,461	109,051	3.4
Metropolitan Statistical Area								
Boulder	203,650	196,959	6,691	3.3	203,691	197,278	6,413	3.1
Colorado Springs	381,649	367,445	14,204	3.7	380,430	366,929	13,501	3.5
Denver-Aurora-Lakewood	1,754,720	1,694,394	60,326	3.4	1,749,276	1,691,023	58,253	3.3
Fort Collins	217,035	210,252	6,783	3.1	216,664	210,130	6,534	3.0
Grand Junction	77,402	74,440	2,962	3.8	76,995	74,145	2,850	3.7
Greeley	171,810	165,645	6,165	3.6	171,278	165,251	6,027	3.5
Pueblo	76,556	72,917	3,639	4.8	76,794	73,355	3,439	4.5
Counties								
Adams	286,669	276,201	10,468	3.7	285,724	275,537	10,187	3.6
Alamosa	8,418	8,049	369	4.4	8,417	8,131	286	3.4
Arapahoe	381,257	368,281	12,976	3.4	380,076	367,557	12,519	3.3
Archuleta	7,315	7,067	248	3.4	7,346	7,106	240	3.3
Baca	2,092	2,044	48	2.3	2,121	2,078	43	2.0
Bent	1,839	1,778	61	3.3	1,836	1,782	54	2.9
Boulder	203,650	196,959	6,691	3.3	203,691	197,278	6,413	3.1
Broomfield	43,432	41,954	1,478	3.4	43,241	41,828	1,413	3.3
Chaffee	10,689	10,354	335	3.1	10,645	10,337	308	2.9
Cheyenne	1,035	1,010	25	2.4	1,069	1,044	25	2.3
Clear Creek	6,242	6,047	195	3.1	6,217	6,040	177	2.8
Conejos	4,082	3,922	160	3.9	4,097	3,967	130	3.2
Costilla	1,855	1,763	92	5.0	1,881	1,800	81	4.3
Crowley	1,373	1,310	63	4.6	1,385	1,320	65	4.7
Custer	2,526	2,446	80	3.2	2,578	2,495	83	3.2
Delta	13,378	12,866	512	3.8	13,578	13,065	513	3.8
Denver	444,251	428,169	16,082	3.6	442,709	427,294	15,415	3.5
Dolores	1,216	1,182	34	2.8	1,204	1,171	33	2.7
Douglas	212,026	205,140	6,886	3.2	211,346	204,678	6,668	3.2
Eagle	35,970	35,007	963	2.7	35,576	34,583	993	2.8
El Paso	367,970	354,219	13,751	3.7	366,759	353,692	13,067	3.6
Elbert	16,287	15,800	487	3.0	16,282	15,810	472	2.9
Fremont	14,640	13,879	761	5.2	14,618	13,883	735	5.0
Garfield	32,757	31,795	962	2.9	32,243	31,292	951	2.9
Gilpin	3,985	3,865	120	3.0	3,979	3,862	117	2.9
Grand	9,964	9,680	284	2.9	9,680	9,398	282	2.9
Gunnison	12,358	12,051	307	2.5	11,988	11,679	309	2.6
Hinsdale	575	563	12	2.1	551	539	12	2.2
Huerfano	2,499	2,343	156	6.2	2,481	2,333	148	6.0
Jackson	1,116	1,095	21	1.9	1,111	1,091	20	1.8
Jefferson	348,794	337,529	11,265	3.2	347,913	336,983	10,930	3.1
Kiowa	911	890	21	2.3	906	888	18	2.0
Kit Carson	4,321	4,228	93	2.2	4,311	4,228	83	1.9
La Plata	32,409	31,421	988	3.0	32,392	31,444	948	2.9
Lake	5,058	4,924	134	2.6	4,932	4,802	130	2.6
Larimer	217,035	210,252	6,783	3.1	216,664	210,130	6,534	3.0
Las Animas	6,010	5,662	348	5.8	6,044	5,718	326	5.4
Lincoln	2,233	2,159	74	3.3	2,239	2,172	67	3.0
Logan	10,139	9,806	333	3.3	10,268	9,950	318	3.1
Mesa	77,402	74,440	2,962	3.8	76,995	74,145	2,850	3.7
Mineral	513	499	14	2.7	515	503	12	2.3
Moffat	6,963	6,735	228	3.3	7,028	6,795	233	3.3
Montezuma	12,433	11,956	477	3.8	12,810	12,367	443	3.5
Montrose	21,606	20,845	761	3.5	21,718	21,004	714	3.3
Morgan	15,597	15,085	512	3.3	15,846	15,343	503	3.2
Otero	7,851	7,472	379	4.8	7,899	7,540	359	4.5
Ouray	2,623	2,537	86	3.3	2,619	2,538	81	3.1
Park	11,777	11,408	369	3.1	11,789	11,434	355	3.0
Phillips	2,579	2,516	63	2.4	2,538	2,472	66	2.6
Pitkin	11,136	10,825	311	2.8	11,035	10,676	359	3.3
Prowers	6,315	6,114	201	3.2	6,299	6,098	201	3.2
Pueblo	76,556	72,917	3,639	4.8	76,794	73,355	3,439	4.5
Rio Blanco	2,958	2,854	104	3.5	2,959	2,853	106	3.6
Rio Grande	5,534	5,289	245	4.4	5,558	5,364	194	3.5
Routt	16,497	16,051	446	2.7	16,032	15,576	456	2.8
Saguache	3,449	3,307	142	4.1	3,508	3,380	128	3.6
San Juan	676	663	13	1.9	665	653	12	1.8
San Miguel	6,383	6,236	147	2.3	6,032	5,881	151	2.5
Sedgwick	1,048	1,009	39	3.7	1,051	1,011	40	3.8
Summit	21,705	21,135	570	2.6	21,035	20,455	580	2.8
Teller	13,679	13,226	453	3.3	13,671	13,237	434	3.2
Washington	2,790	2,718	72	2.6	2,881	2,812	69	2.4
Weld	171,810	165,645	6,165	3.6	171,278	165,251	6,027	3.5
Yuma	5,700	5,574	126	2.2	5,855	5,734	121	2.1

All estimates made in cooperation with the U.S. Department of Labor, Bureau of Labor Statistics and adjusted to Current Population Survey data. Estimates have been revised to incorporate population data from the American Community Survey.
 Colorado Department of Labor and Employment 2023

Not Seasonally Adjusted Labor Force

	July 2023				July 2022			
	Labor Force	Employment	Unemployment	Rate	Labor force	Employment	Unemployment	Rate
Colorado	3,263,952	3,150,767	113,185	3.5	3,207,188	3,114,554	92,634	2.9
Metropolitan Statistical Area								
Boulder	203,650	196,959	6,691	3.3	200,702	195,640	5,062	2.5
Colorado Springs	381,649	367,445	14,204	3.7	371,879	359,907	11,972	3.2
Denver-Aurora-Lakewood	1,754,720	1,694,394	60,326	3.4	1,725,804	1,677,399	48,405	2.8
Fort Collins	217,035	210,252	6,783	3.1	211,475	205,965	5,510	2.6
Grand Junction	77,402	74,440	2,962	3.8	76,358	73,863	2,495	3.3
Greeley	171,810	165,645	6,165	3.6	169,778	164,447	5,331	3.1
Pueblo	76,556	72,917	3,639	4.8	75,680	72,421	3,259	4.3
Counties								
Adams	286,669	276,201	10,468	3.7	282,369	273,454	8,915	3.2
Alamosa	8,418	8,049	369	4.4	8,255	7,952	303	3.7
Arapahoe	381,257	368,281	12,976	3.4	375,335	364,460	10,875	2.9
Archuleta	7,315	7,067	248	3.4	7,280	7,071	209	2.9
Baca	2,092	2,044	48	2.3	2,190	2,154	36	1.6
Bent	1,839	1,778	61	3.3	1,855	1,800	55	3.0
Boulder	203,650	196,959	6,691	3.3	200,702	195,640	5,062	2.5
Broomfield	43,432	41,954	1,478	3.4	42,491	41,449	1,042	2.5
Chaffee	10,689	10,354	335	3.1	10,346	10,103	243	2.3
Cheyenne	1,035	1,010	25	2.4	1,116	1,095	21	1.9
Clear Creek	6,242	6,047	195	3.1	6,165	5,997	168	2.7
Conejos	4,082	3,922	160	3.9	4,069	3,941	128	3.1
Costilla	1,855	1,763	92	5.0	1,841	1,773	68	3.7
Crowley	1,373	1,310	63	4.6	1,370	1,317	53	3.9
Custer	2,526	2,446	80	3.2	2,440	2,378	62	2.5
Delta	13,378	12,866	512	3.8	13,766	13,322	444	3.2
Denver	444,251	428,169	16,082	3.6	436,170	423,693	12,477	2.9
Dolores	1,216	1,182	34	2.8	1,201	1,173	28	2.3
Douglas	212,026	205,140	6,886	3.2	208,121	202,945	5,176	2.5
Eagle	35,970	35,007	963	2.7	35,018	34,212	806	2.3
El Paso	367,970	354,219	13,751	3.7	358,490	346,907	11,583	3.2
Elbert	16,287	15,800	487	3.0	16,215	15,847	368	2.3
Fremont	14,640	13,879	761	5.2	14,583	13,946	637	4.4
Garfield	32,757	31,795	962	2.9	31,649	30,803	846	2.7
Gilpin	3,985	3,865	120	3.0	3,932	3,836	96	2.4
Grand	9,964	9,680	284	2.9	9,647	9,426	221	2.3
Gunnison	12,358	12,051	307	2.5	11,817	11,557	260	2.2
Hinsdale	575	563	12	2.1	541	531	10	1.8
Huerfano	2,499	2,343	156	6.2	2,572	2,414	158	6.1
Jackson	1,116	1,095	21	1.9	1,081	1,062	19	1.8
Jefferson	348,794	337,529	11,265	3.2	343,332	334,314	9,018	2.6
Kiowa	911	890	21	2.3	967	951	16	1.7
Kit Carson	4,321	4,228	93	2.2	4,344	4,260	84	1.9
La Plata	32,409	31,421	988	3.0	31,190	30,330	860	2.8
Lake	5,058	4,924	134	2.6	4,736	4,616	120	2.5
Larimer	217,035	210,252	6,783	3.1	211,475	205,965	5,510	2.6
Las Animas	6,010	5,662	348	5.8	6,147	5,871	276	4.5
Lincoln	2,233	2,159	74	3.3	2,302	2,239	63	2.7
Logan	10,139	9,806	333	3.3	10,264	9,962	302	2.9
Mesa	77,402	74,440	2,962	3.8	76,358	73,863	2,495	3.3
Mineral	513	499	14	2.7	462	450	12	2.6
Moffat	6,963	6,735	228	3.3	6,891	6,699	192	2.8
Montezuma	12,433	11,956	477	3.8	12,374	11,967	407	3.3
Montrose	21,606	20,845	761	3.5	21,539	20,884	655	3.0
Morgan	15,597	15,085	512	3.3	15,706	15,210	496	3.2
Otero	7,851	7,472	379	4.8	7,947	7,619	328	4.1
Ouray	2,623	2,537	86	3.3	2,676	2,609	67	2.5
Park	11,777	11,408	369	3.1	11,674	11,404	270	2.3
Phillips	2,579	2,516	63	2.4	2,690	2,635	55	2.0
Pitkin	11,136	10,825	311	2.8	10,775	10,503	272	2.5
Prowers	6,315	6,114	201	3.2	6,319	6,140	179	2.8
Pueblo	76,556	72,917	3,639	4.8	75,680	72,421	3,259	4.3
Rio Blanco	2,958	2,854	104	3.5	2,916	2,810	106	3.6
Rio Grande	5,534	5,289	245	4.4	5,640	5,408	232	4.1
Routt	16,497	16,051	446	2.7	15,993	15,634	359	2.2
Saguache	3,449	3,307	142	4.1	3,515	3,399	116	3.3
San Juan	676	663	13	1.9	673	659	14	2.1
San Miguel	6,383	6,236	147	2.3	5,977	5,850	127	2.1
Sedgwick	1,048	1,009	39	3.7	1,156	1,128	28	2.4
Summit	21,705	21,135	570	2.6	20,814	20,370	444	2.1
Teller	13,679	13,226	453	3.3	13,389	13,000	389	2.9
Washington	2,790	2,718	72	2.6	2,889	2,826	63	2.2
Weld	171,810	165,645	6,165	3.6	169,778	164,447	5,331	3.1
Yuma	5,700	5,574	126	2.2	5,971	5,855	116	1.9

All estimates made in cooperation with the U.S. Department of Labor, Bureau of Labor Statistics and adjusted to Current Population Survey data. Estimates have been revised to incorporate population data from the American Community Survey.
 Colorado Department of Labor and Employment 2023

Not Seasonally Adjusted Labor Force								
	July 2023				June 2023			
Select Cities in Colorado	Labor Force	Employed	Unemployed	Rate	Labor Force	Employment	Unemployed	Rate
Arvada	72,179	69,848	2,331	3.2	71,974	69,734	2,240	3.1
Aurora	213,339	205,604	7,735	3.6	212,653	205,190	7,463	3.5
Boulder	68,400	66,030	2,370	3.5	68,385	66,137	2,248	3.3
Brighton	21,163	20,327	836	4.0	21,121	20,278	843	4.0
Castle Rock	40,104	38,779	1,325	3.3	39,969	38,691	1,278	3.2
Centennial	66,156	64,010	2,146	3.2	65,979	63,884	2,095	3.2
Colorado Springs	255,108	245,938	9,170	3.6	254,282	245,572	8,710	3.4
Commerce City	31,509	30,311	1,198	3.8	31,431	30,238	1,193	3.8
Englewood	22,249	21,471	778	3.5	22,137	21,429	708	3.2
Erie	18,793	18,241	552	2.9	18,780	18,230	550	2.9
Fort Collins	105,220	101,943	3,277	3.1	105,101	101,884	3,217	3.1
Fountain	13,982	13,413	569	4.1	13,940	13,393	547	3.9
Grand Junction	31,258	30,006	1,252	4.0	31,076	29,887	1,189	3.8
Greeley	52,832	50,719	2,113	4.0	52,654	50,598	2,056	3.9
Lafayette	18,191	17,631	560	3.1	18,206	17,659	547	3.0
Lakewood	91,056	87,883	3,173	3.5	90,831	87,740	3,091	3.4
Littleton	26,212	25,365	847	3.2	26,143	25,316	827	3.2
Longmont	57,653	55,647	2,006	3.5	57,671	55,735	1,936	3.4
Loveland	47,993	46,499	1,494	3.1	47,904	46,472	1,432	3.0
Northglenn	22,068	21,269	799	3.6	21,995	21,218	777	3.5
Parker	35,541	34,403	1,138	3.2	35,401	34,326	1,075	3.0
Pueblo	48,806	46,287	2,519	5.2	48,921	46,565	2,356	4.8
Thornton	85,389	82,539	2,850	3.3	85,143	82,340	2,803	3.3
Westminster	69,300	66,849	2,451	3.5	69,059	66,710	2,349	3.4
Wheat Ridge	17,912	17,269	643	3.6	17,857	17,241	616	3.4
Windsor	15,886	15,339	547	3.4	15,833	15,308	525	3.3

	July 2023				July 2022			
Select Cities in Colorado	Labor Force	Employed	Unemployed	Rate	Labor Force	Employment	Unemployed	Rate
Arvada	72,179	69,848	2,331	3.2	70,982	69,182	1,800	2.5
Aurora	213,339	205,604	7,735	3.6	210,251	203,480	6,771	3.2
Boulder	68,400	66,030	2,370	3.5	67,367	65,588	1,779	2.6
Brighton	21,163	20,327	836	4.0	20,820	20,127	693	3.3
Castle Rock	40,104	38,779	1,325	3.3	39,343	38,364	979	2.5
Centennial	66,156	64,010	2,146	3.2	64,980	63,346	1,634	2.5
Colorado Springs	255,108	245,938	9,170	3.6	248,634	240,861	7,773	3.1
Commerce City	31,509	30,311	1,198	3.8	30,979	30,010	969	3.1
Englewood	22,249	21,471	778	3.5	21,840	21,248	592	2.7
Erie	18,793	18,241	552	2.9	18,506	18,113	393	2.1
Fort Collins	105,220	101,943	3,277	3.1	102,488	99,864	2,624	2.6
Fountain	13,982	13,413	569	4.1	13,618	13,136	482	3.5
Grand Junction	31,258	30,006	1,252	4.0	30,807	29,773	1,034	3.4
Greeley	52,832	50,719	2,113	4.0	52,258	50,352	1,906	3.6
Lafayette	18,191	17,631	560	3.1	17,930	17,513	417	2.3
Lakewood	91,056	87,883	3,173	3.5	89,665	87,046	2,619	2.9
Littleton	26,212	25,365	847	3.2	25,768	25,104	664	2.6
Longmont	57,653	55,647	2,006	3.5	56,810	55,274	1,536	2.7
Loveland	47,993	46,499	1,494	3.1	46,797	45,551	1,246	2.7
Northglenn	22,068	21,269	799	3.6	21,728	21,056	672	3.1
Parker	35,541	34,403	1,138	3.2	34,902	34,035	867	2.5
Pueblo	48,806	46,287	2,519	5.2	48,267	45,972	2,295	4.8
Thornton	85,389	82,539	2,850	3.3	84,171	81,718	2,453	2.9
Westminster	69,300	66,849	2,451	3.5	68,111	66,196	1,915	2.8
Wheat Ridge	17,912	17,269	643	3.6	17,662	17,104	558	3.2
Windsor	15,886	15,339	547	3.4	15,605	15,184	421	2.7

All estimates made in cooperation with the U.S. Department of Labor, Bureau of Labor Statistics and adjusted to Current Population Survey data. Estimates have been revised to incorporate population data from the American Community Survey. Colorado Department of Labor and Employment 2023

Colorado LMI Data Overview

July 2023

Employment					
	Jul-23	Jun-23	Jul-22	Change from previous:	
				Period	Year
Nonfarm Wage and Salary Employment (SA)	2,907,800	2,907,000	2,869,000	800	38,800
Total Resident Employment (SA)	3,157,500	3,157,500	3,111,000	0	46,500
	Q4 2022	Q3 2022	Q4 2021		
UI Covered Total Employment	2,847,730	2,832,186	2,763,451	15,544	84,279
UI Covered Private Employment	2,409,300	2,404,030	2,336,770	5,270	72,530

Unemployment					
	Jul-23	Jun-23	Jul-22	Change from previous:	
				Period	Year
Unemployment (SA)	95,000	91,700	86,900	3,300	8,100
Percent Unemployed (SA)	2.9%	2.8%	2.7%	0.1	0.2
	Jul-23	Jun-23	Jul-22		
Initial Claims	11,491	17,816	11,181	(6,325)	310
Continued Weeks Claimed	100,345	142,280	76,478	(41,935)	23,867

Wages and Earnings					
	Q4 2022	Q3 2022	Q4 2021	Change from previous:	
				Period	Year
Total Average Weekly Wage	\$1,472	\$1,437	\$1,484	\$35	(\$12)
Private Average Weekly Wage	\$1,495	\$1,447	\$1,510	\$48	(\$15)
	Jul-23	Jun-23	Jul-22		
Average Weekly Earnings (Construction)	\$1,299.95	\$1,260.28	\$1,196.98	\$39.67	\$102.97
Average Weekly Earnings (Manufacturing)	\$1,214.41	\$1,184.15	\$1,086.48	\$30.26	\$127.93

CO Unemployment Insurance Trust Fund					
	Jun-23	May-23	Jun-22	Change from previous:	
				Period	Year
Employer Contributions	\$5,785,099	\$361,933,559	\$4,593,267	(\$356,148,460)	\$1,191,832
Benefits Paid	\$43,847,672	\$47,924,104	\$24,379,411	(\$4,076,432)	\$19,468,261
Average Weekly Benefit Amount	\$580.05	\$577.58	\$427.59	\$2.47	\$152.47
Duration (weeks)	12.78	16.33	13.43	(3.55)	(0.64)
Outstanding Title XII Loan Balance	\$0	\$0	\$133,089,861	\$0	(133,089,861)

Consumer Price Index for All Urban Consumers					
Not seasonally adjusted	Jul-23	May-23	Jul-22	% Change from previous:	
				Period	Year
Denver-Aurora-Lakewood	323.298	319.132	308.728	1.3%	4.7%
US City Average	305.691	304.127	296.276	0.5%	3.2%

(Most current data available for all categories)