

# PRESS RELEASE

Colorado Department of Labor and Employment • 633 17<sup>th</sup> Street, Suite 1200 • Denver, CO 80202 • (303) 318-8004 • Fax: (303) 318-8070

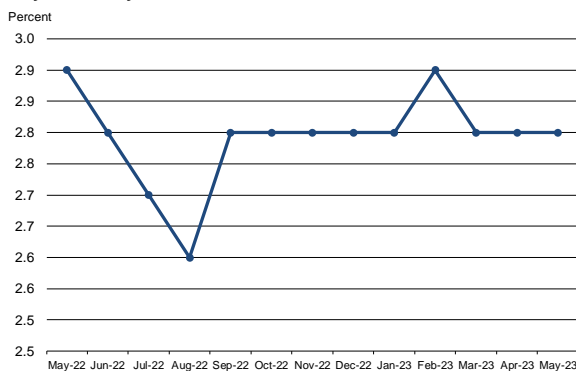
## For Immediate Release

Date: June 16, 2023/ 8:00 A.M.  
Contact: Office of Government, Policy and Public Relations  
Email: [cdle\\_pr@state.co.us](mailto:cdle_pr@state.co.us)  
Web: <http://www.colmigateway.com>

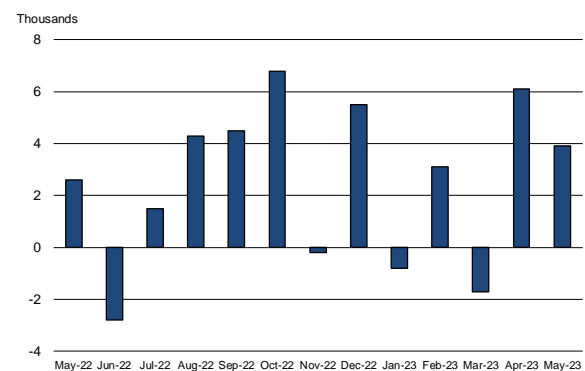
## Colorado Employment Situation – May 2023

### 3,900 Nonfarm Payroll Jobs Added in May; Unemployment Rate Flat at 2.8 Percent

Colorado unemployment rate, seasonally adjusted  
May 2022 - May 2023



Colorado nonfarm payroll employment over-the-month  
change, seasonally adjusted, May 2022 - May 2023



## Household survey data

- According to the survey of households, Colorado's seasonally adjusted **unemployment rate** was unchanged from April to May at 2.8 percent. The **number of unemployed individuals** grew by 600 over the same time period to 90,000. Colorado's unemployment rate has been below 3.0 percent for thirteen consecutive months and remains at pre-pandemic levels. The national unemployment rate increased three-tenths of a percentage point to 3.7 percent from April to May.
- Colorado's **labor force** increased by 9,400 in May to 3,244,400. The share of Coloradans participating in the labor force rose to 68.7 percent in May, compared to 68.6 percent the month prior. The U.S. labor force participation rate was 62.6 percent in May and was unchanged from the month prior.
- The **number of individuals employed** in Colorado grew by 8,800 in May to 3,154,500, which represents 66.8 percent of the state's 16+ population. The last time Colorado's employment-population ratio reached 66.8 percent was in January 2020. The national employment-population ratio decreased one-tenth of a percentage point in May from the month prior to 60.3 percent.

## Establishment survey data

- **Nonfarm payroll jobs** in Colorado grew by 3,900 from April to May for a total of 2,900,500 jobs, according to the survey of business establishments. Private sector payroll jobs increased by 2,800, while government added 1,100 jobs. **Colorado's government sector has now returned to pre-pandemic levels of employment** (464,700 jobs in May 2023 compared to 462,100 jobs in February 2020).
- The over the month change in nonfarm payroll jobs for **April were revised** down to show a gain of 6,100 compared to March rather than the originally estimated increase of 7,200 (monthly revisions are based on additional responses from businesses and government agencies since the last published estimates).
- **Private industry sectors with significant job gains** in May were: other services (≈3,900), leisure and hospitality (≈2,900), and manufacturing (≈1,300). Significant over the month private sector declines occurred in professional and business services (≈1,900), construction (≈1,800), and financial activities (≈1,200).
- **Since May 2022**, nonfarm payroll jobs have increased 30,200, with the private sector growing by 13,000 and government adding 17,200 jobs. The largest **private sector job gains** were in leisure and hospitality (≈21,200), professional and business services (≈7,000), and other services (≈2,700). During that same period financial activities (≈10,600), trade, transportation, and utilities (≈6,800), information (≈2,800), and construction (≈1,800) **payroll jobs declined**. Colorado's **rate of job growth** over the past year is 1.1 percent, lagging the U.S. rate of 2.7 percent.
- Over the year, the **average workweek** for all Colorado employees on private nonfarm payrolls decreased from 33.7 to 33.5 hours, while **average hourly earnings** grew from \$34.68 to \$35.72, two dollars and twenty-eight cents more than the national average hourly earnings of \$33.44.

## Correction to Nonfarm Payroll Job Estimates

Due to a system modernization that coincided with the processing of third quarter 2022 Quarterly Census of Employment and Wage (QCEW) data, the Office of Labor Market Information discovered a [nonsampling error](#), which resulted in an undercount of nonfarm payroll job estimates for 2022 benchmark processing. The Bureau of Labor Statistics, in cooperation with Colorado's Office of Labor Market Information, have released corrected employment data from September 2022 forward. This correction addresses part of the undercount issue illustrated in the third quarter 2022 expected revisions [press release](#).

On a seasonally adjusted basis, corrected data from September 2022 forward indicate an employment increase of approximately 7,700 compared to the previously published estimates. That change is concentrated within the Denver Metropolitan Statistical Area's government sector. Additionally, state-level employment estimates for total nonfarm, government, and local government were also corrected. In addition to estimated employment levels, over the year growth rates are also affected by these changes. For instance, the previously published over the year growth rate for total nonfarm in October 2022 was 2.8%, with these corrections that figure has increased to 3.1%.

To view the corrected nonfarm payroll job estimates, visit [LMI Gateway](#) or state and metro area employment, hours and earnings at [BLS](#). Further information on this correction can be viewed on [BLS' errata page](#).

###

All Colorado estimates from the establishment and household surveys, including greater geographic detail, are available at: <http://www.colmigateway.com>. Estimates for all states and the nation are available at: <http://www.bls.gov>.

For data visualizations, visit [public.tableau.com/app/profile/cdle.lmi](https://public.tableau.com/app/profile/cdle.lmi).

The **June 2023 Colorado Employment Situation** will be released at 8:00 AM on Friday, July 21, 2023. The full schedule of release dates for calendar year 2023 estimates is available at <http://www.colmigateway.com>.

###

### **Technical Notes**

This release provides information on industry employment and labor force statistics for May 2023, the most current estimates available from the Colorado Department of Labor and Employment. The reference period for the establishment and household surveys was the pay period or week that includes the 12<sup>th</sup> of the month.

The unemployment rate, labor force, labor force participation, total employment and the number of unemployed are based on a survey of households. The total employment estimate derived from this survey is intended to measure the number of people employed.

Nonfarm payroll jobs estimates are based on a survey of business establishments and government agencies, and are intended to measure the number of jobs, not the number of people employed. Other series based on this survey include private sector average weekly hours, average hourly earnings and average weekly earnings.

The business establishment survey covers about seven times the number of households surveyed and is therefore considered a more reliable indicator of economic conditions. Because the estimates are based on two separate surveys, one measuring jobs by worksite and the other measuring persons employed and unemployed by household, estimates based on these surveys may provide seemingly conflicting results.

###

**Supplemental information available in following pages**

# MAY 2023

## EMPLOYMENT SITUATION SUPPLEMENTAL CHARTS

June 16, 2023

This briefing provides information on industry employment and labor force statistics, derived from surveys of business establishments and households. The reference period for these surveys is the pay period or week that includes the 12<sup>th</sup> of the month. The reference week for May was specifically May 7<sup>th</sup> – May 13<sup>th</sup>.

## Colorado Unemployment Rate Nine-Tenths of a Percentage Point Lower Than U.S. Rate in May

Percent  
7

6

5

4

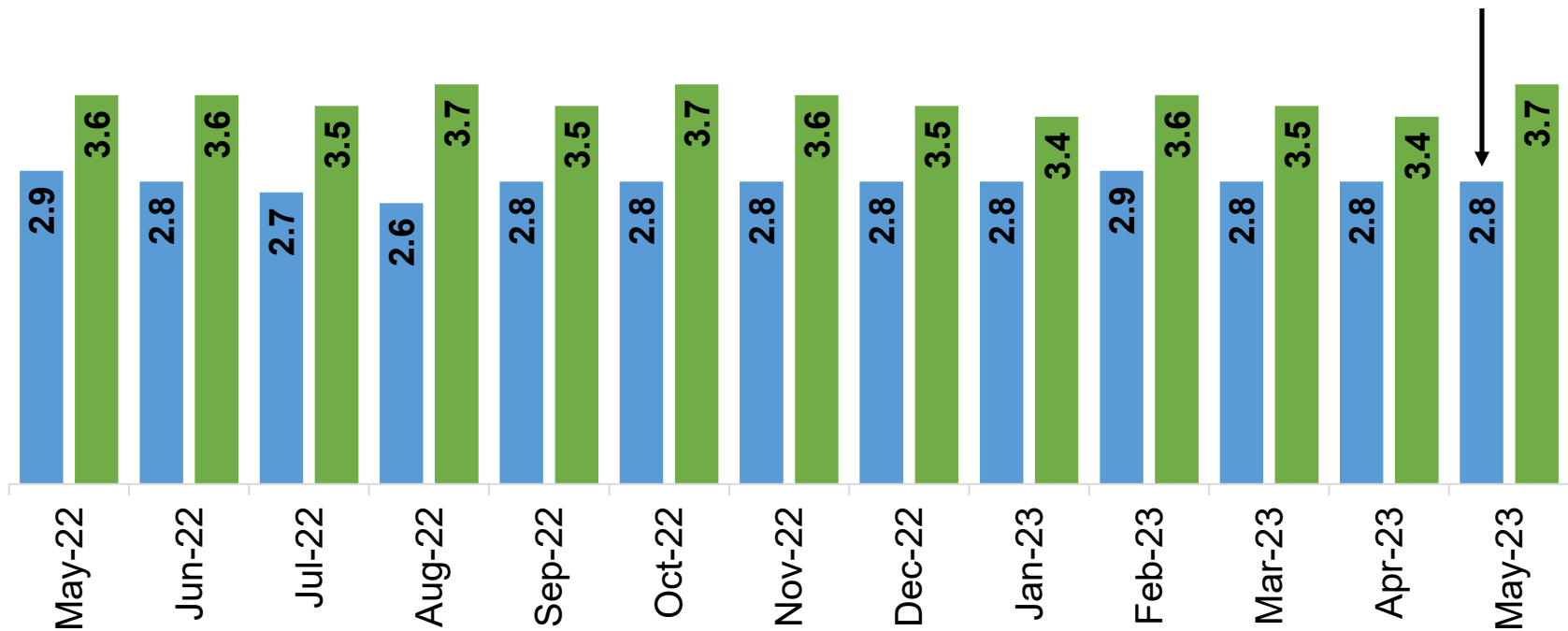
3

2

1

0

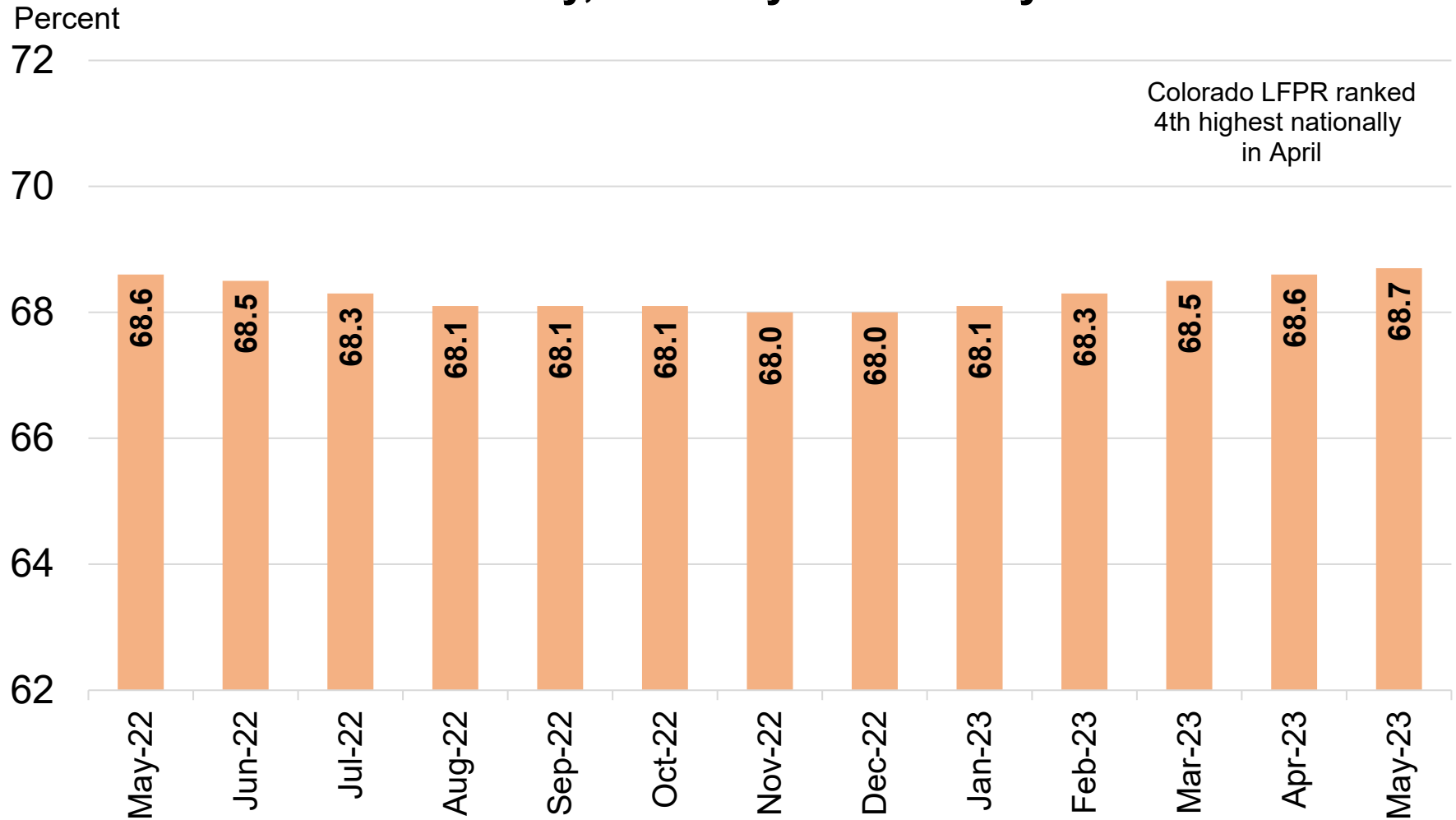
While the number of unemployed Coloradans increased by 600 in May, the unemployment rate was unchanged due to rounding. The state's labor force grew by 9,400 last month and total employment increased by 8,800. Colorado's unemployment rate has been below 3.0 percent since May 2022.



Source: Colorado Department of Labor and Employment; Bureau of Labor Statistics  
Data seasonally adjusted

■ Colorado ■ U.S.

## Colorado's Labor Force Participation Rate Increased to 68.7 Percent in May, Just Shy of February 2020 Level



Source: Colorado Department of Labor and Employment; Bureau of Labor Statistics

Data seasonally adjusted. Estimates share of Colorado's 16+ population that is in the labor force in a given month.

February 2020 rate was 68.8 percent.

For further information on labor force definitions, go here: <https://www.bls.gov/lau/laufaq.htm>

## Colorado's Employment-Population Ratio Rose in May, Fifth Straight Month with an Increase

Percent

68

67

66

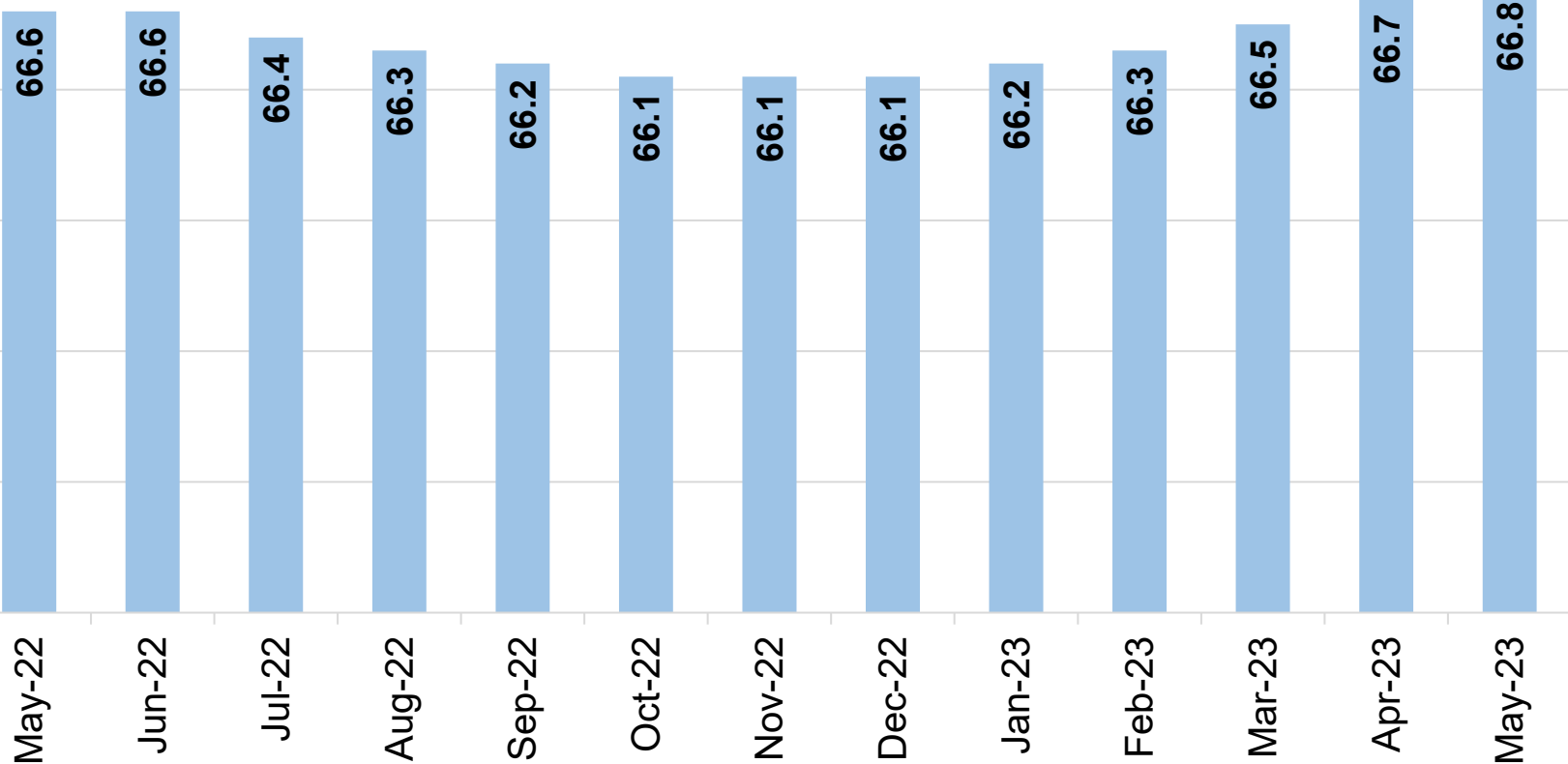
65

64

63

62

Colorado EPOP ranked  
4th highest nationally  
in April

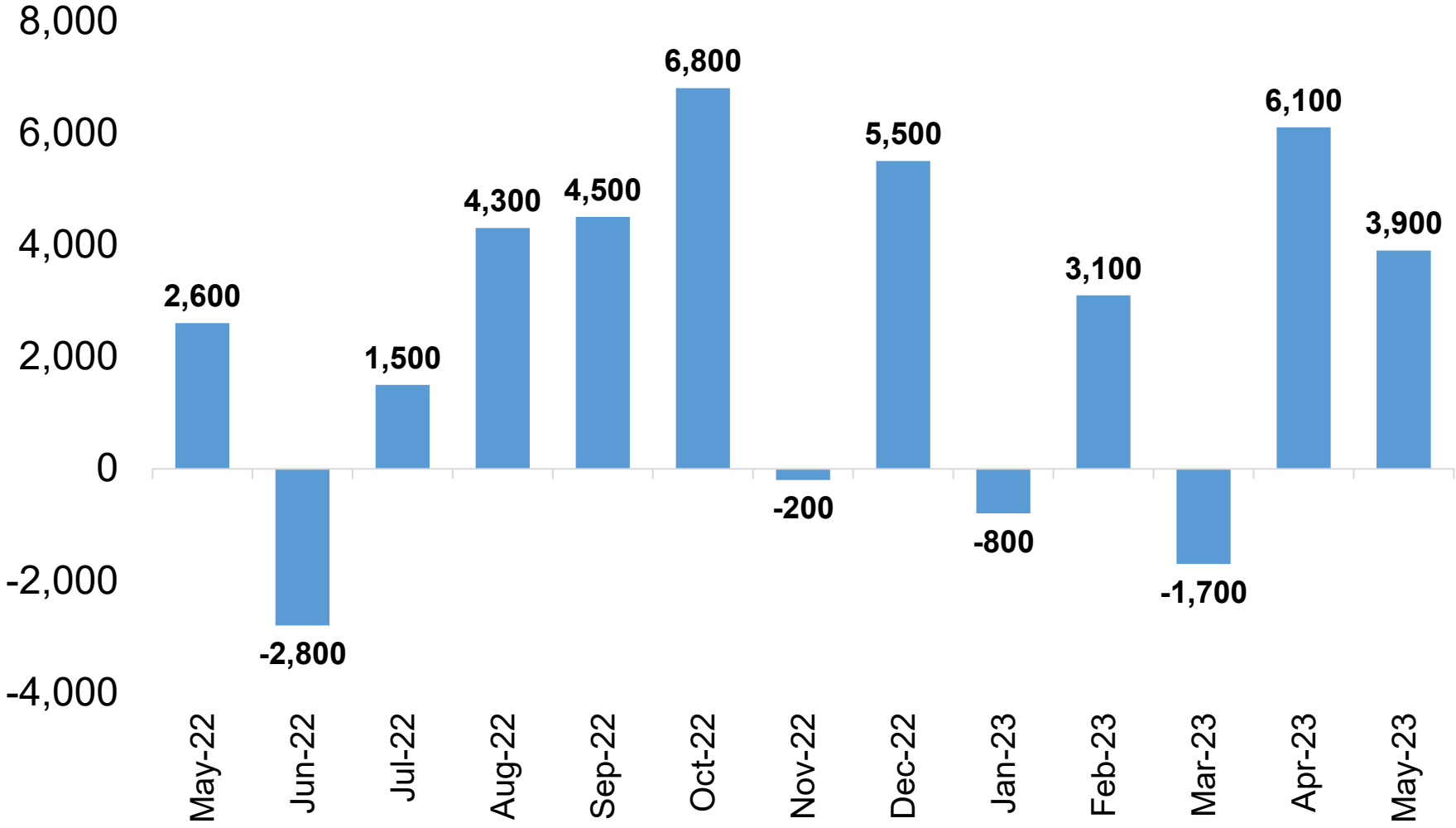


Source: Colorado Department of Labor and Employment; Bureau of Labor Statistics

Data seasonally adjusted. Estimates share of Colorado's 16+ population that is employed in a given month.

February 2020 rate was 66.6 percent.

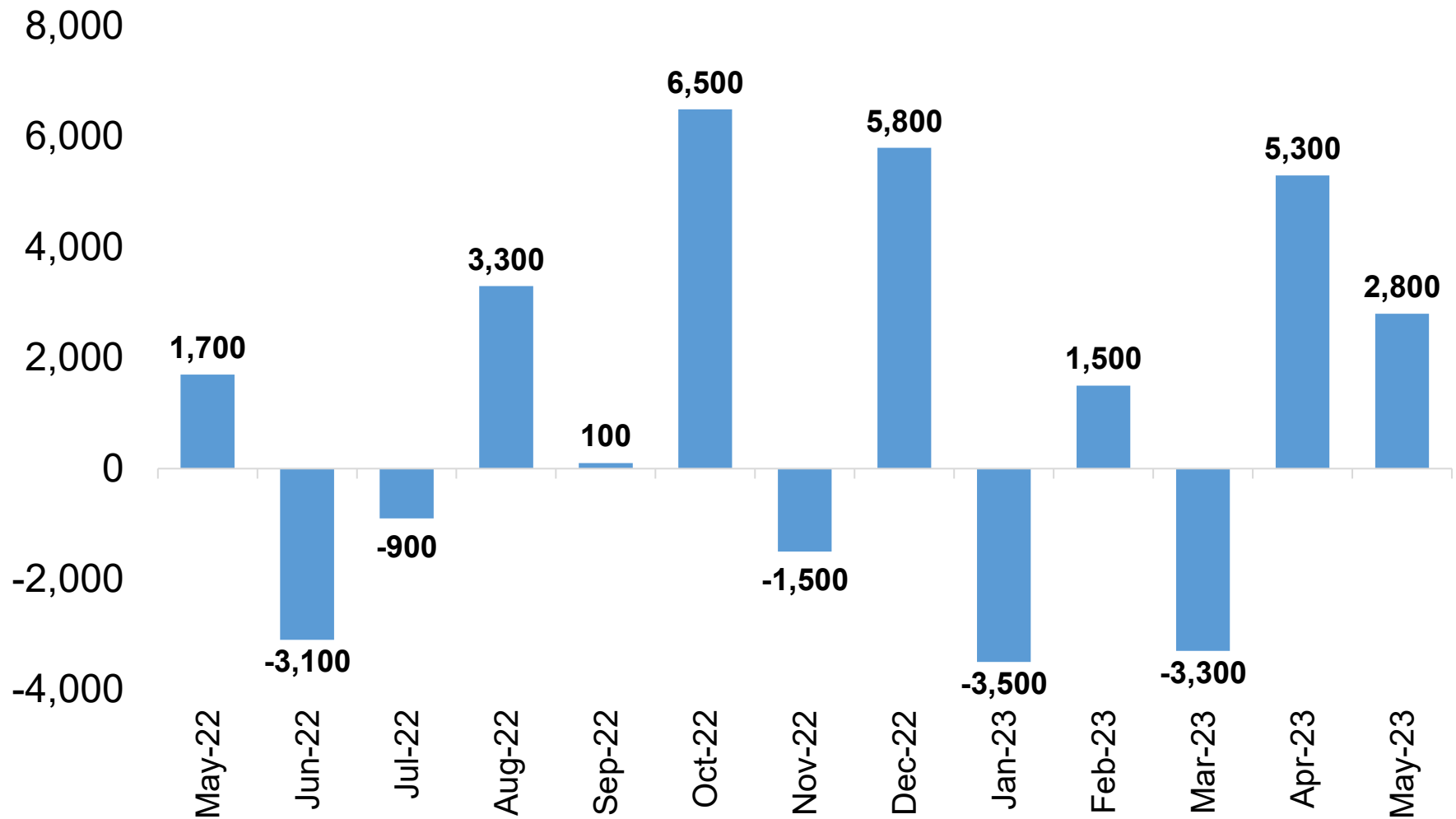
# Colorado Added 3,900 Total Nonfarm Jobs in May; Sep. 2022 Change Improves to +4,500 After Correction



Source: Colorado Department of Labor and Employment; Bureau of Labor Statistics  
Data seasonally adjusted

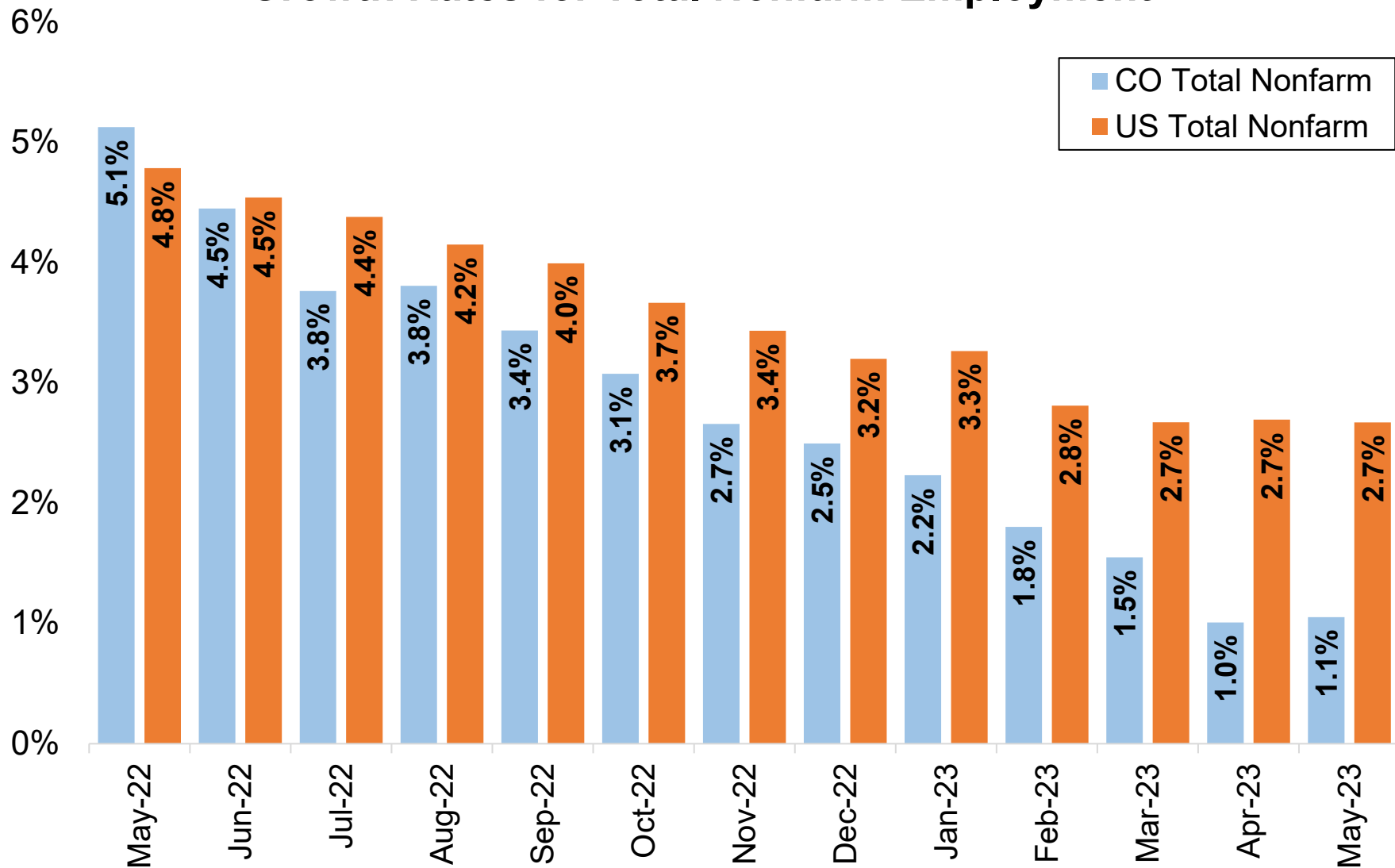


## Private Jobs Grew by 2,800 in May, First Time Since Sep. 2022 with Positive Gains in Consecutive Months



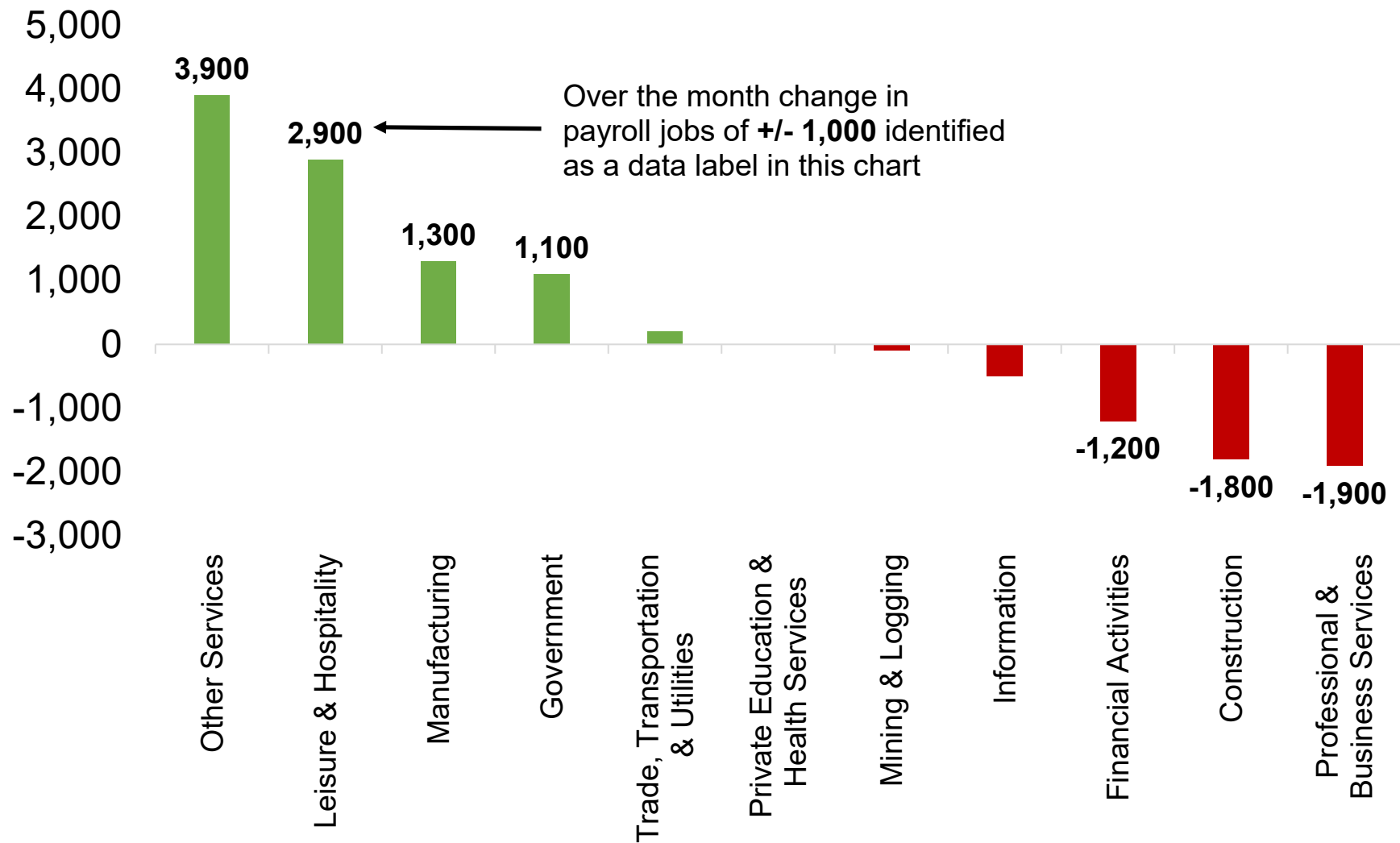
Source: Colorado Department of Labor and Employment; Bureau of Labor Statistics  
Data seasonally adjusted

## Colorado and U.S. Over the Year Growth Rates for Total Nonfarm Employment



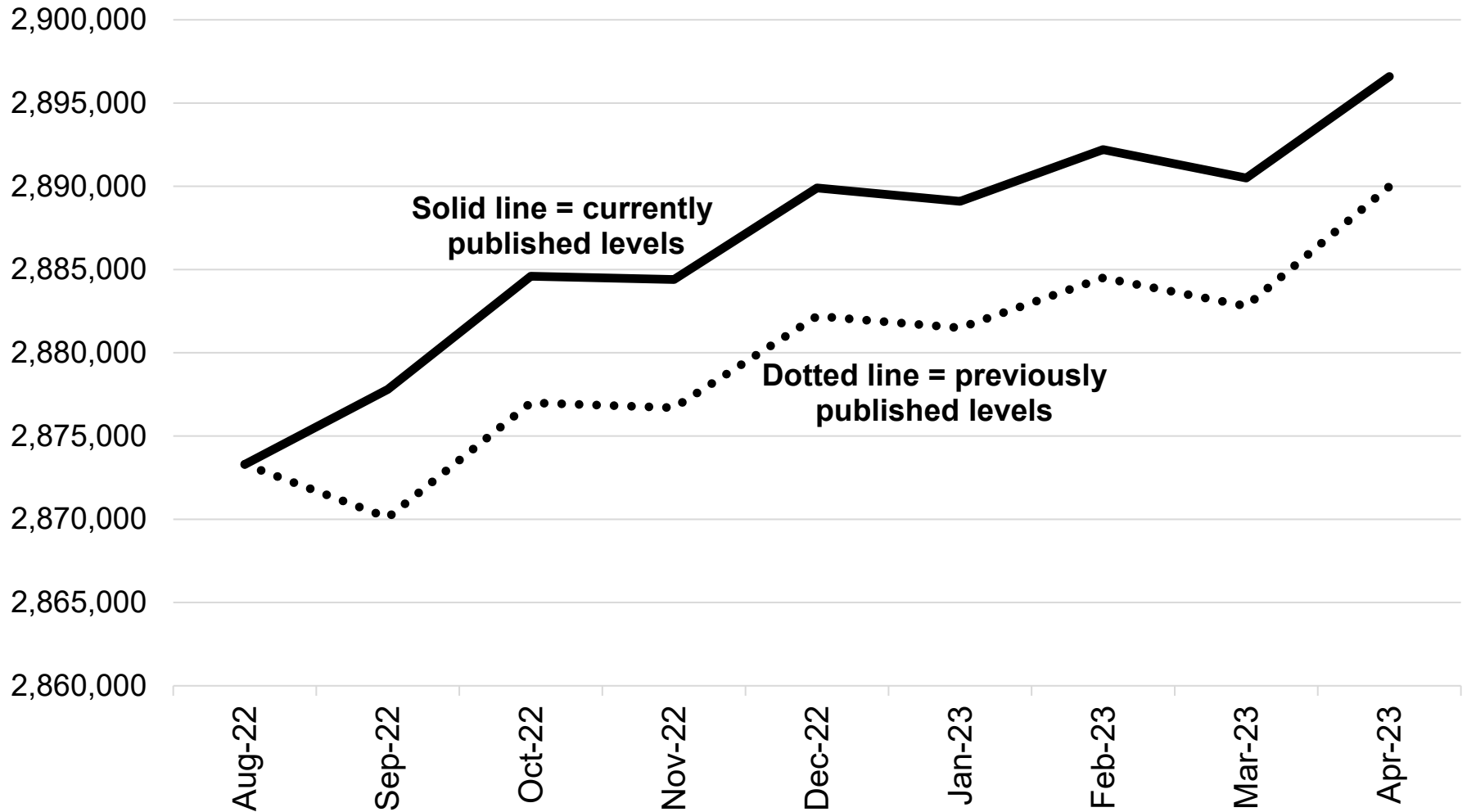
Source: Colorado Department of Labor and Employment; Bureau of Labor Statistics  
Data seasonally adjusted

## Mixed Industry Level Growth in May; Equal Number of Supersectors Gained and Lost Jobs



Source: Colorado Department of Labor and Employment; Bureau of Labor Statistics  
Data seasonally adjusted

## Change in Colorado Total Nonfarm Employment Levels, Previously Published vs. Currently Published\*

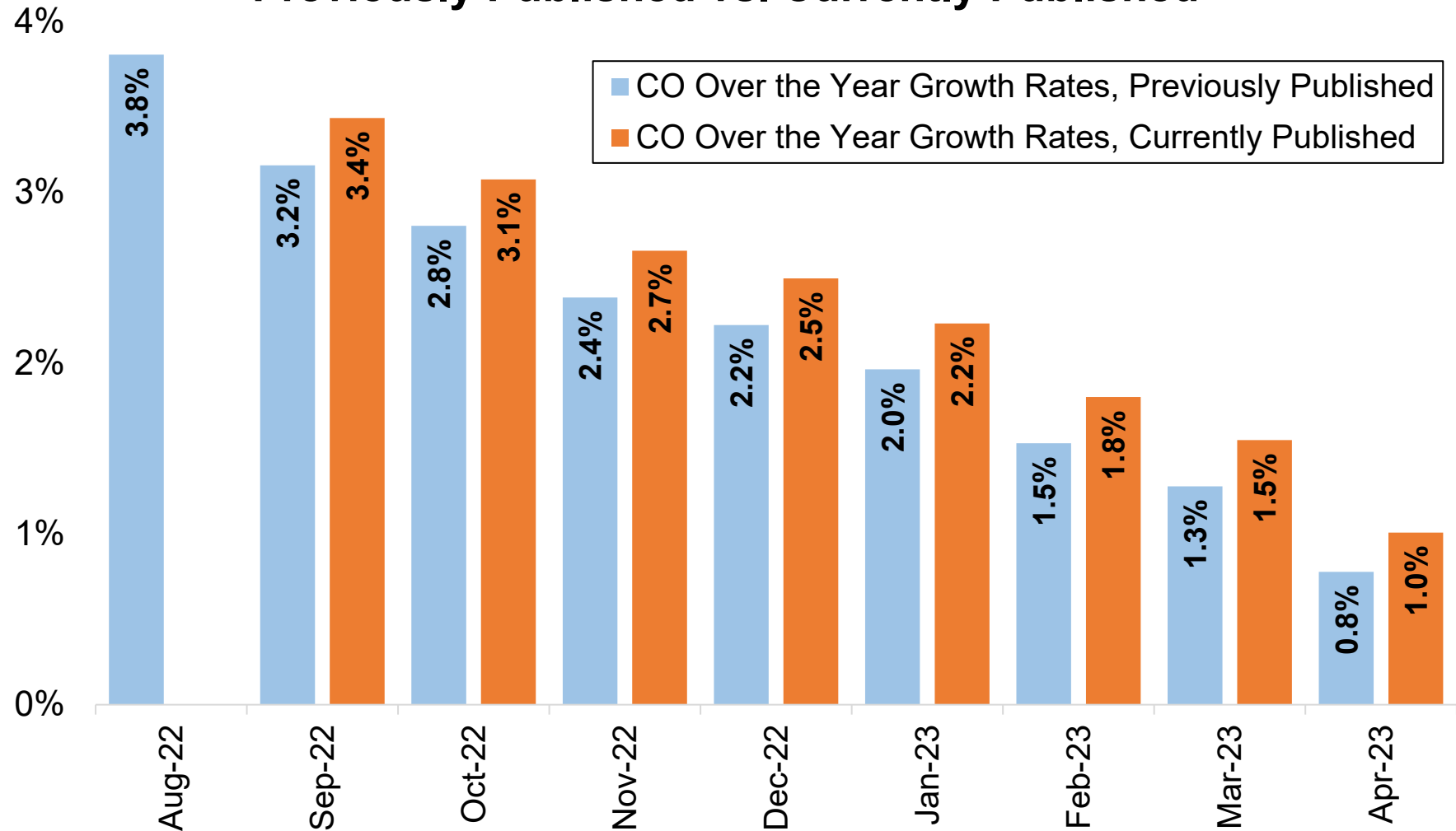


Source: Colorado Department of Labor and Employment; Bureau of Labor Statistics. Data seasonally adjusted.

\*Currently published reflects corrections to the employment estimates back to September 2022 as noted in the May 2023 press release and on the Bureau of Labor Statistics site: [https://www.bls.gov/bls/errata/sae\\_errata.htm](https://www.bls.gov/bls/errata/sae_errata.htm).

The previously published estimates have been overwritten by these corrections.

## Colorado Over the Year Growth Rates for Total Nonfarm, Previously Published vs. Currently Published\*

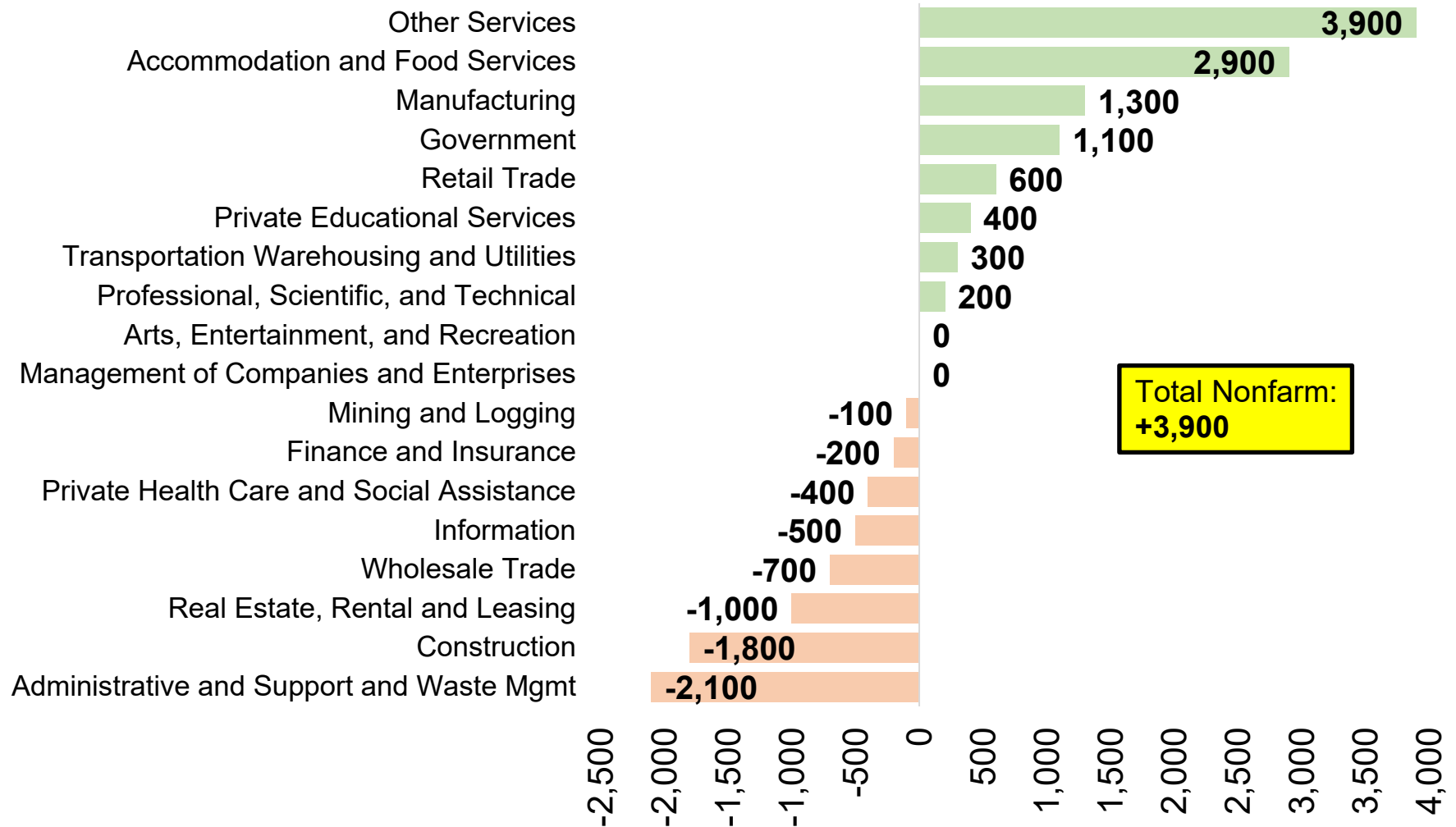


Source: Colorado Department of Labor and Employment; Bureau of Labor Statistics. Data seasonally adjusted.

\*Currently published reflects corrections to the employment estimates back to September 2022 as noted in the May 2023 press release and on the Bureau of Labor Statistics site: [https://www.bls.gov/bls/errata/sae\\_errata.htm](https://www.bls.gov/bls/errata/sae_errata.htm).

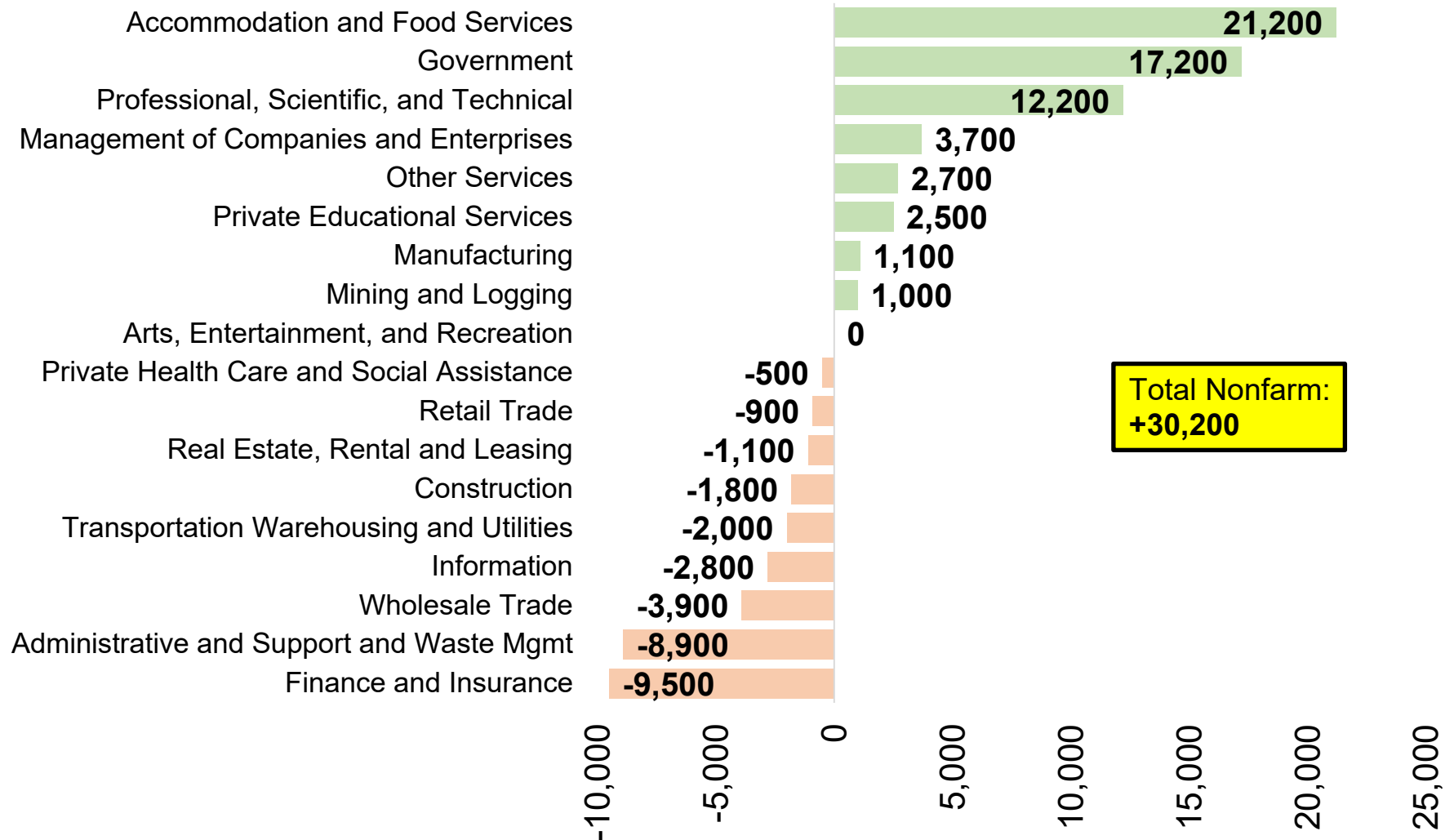
The previously published estimates have been overwritten by these corrections.

## Change in Payroll Jobs in May 2023, by Industry Sector



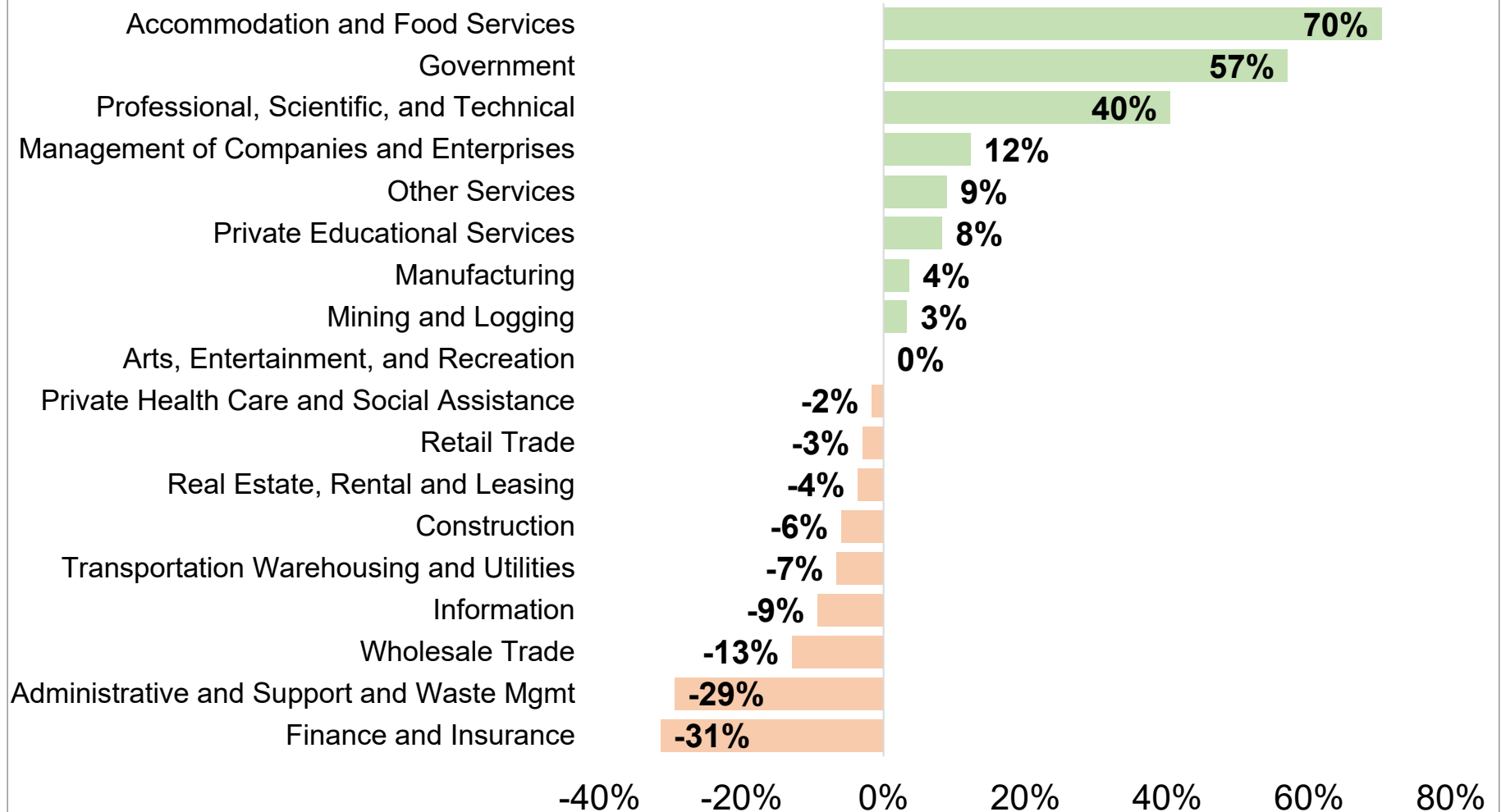
Source: Colorado Department of Labor and Employment; Bureau of Labor Statistics  
Data seasonally adjusted, April 2023 to May 2023

## Change in Payroll Jobs Over Past 12 Months, by Industry Sector



Source: Colorado Department of Labor and Employment; Bureau of Labor Statistics  
Data seasonally adjusted, May 2022 to May 2023

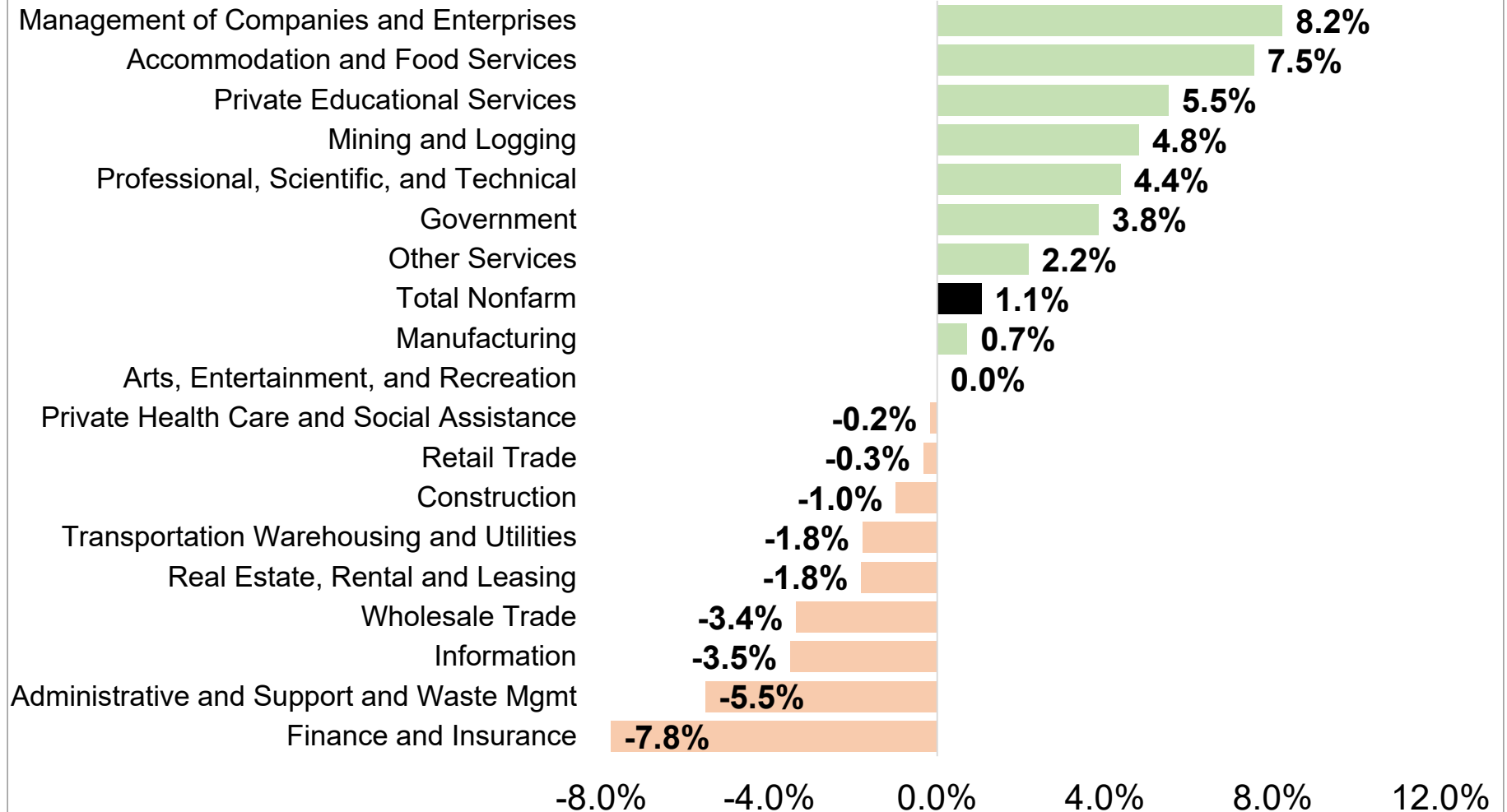
## Percent Contribution to Total Colorado Nonfarm Payroll Job Change Over Past 12 Months, by Industry Sector



Source: Colorado Department of Labor and Employment; Bureau of Labor Statistics  
Data seasonally adjusted, May 2022 to May 2023

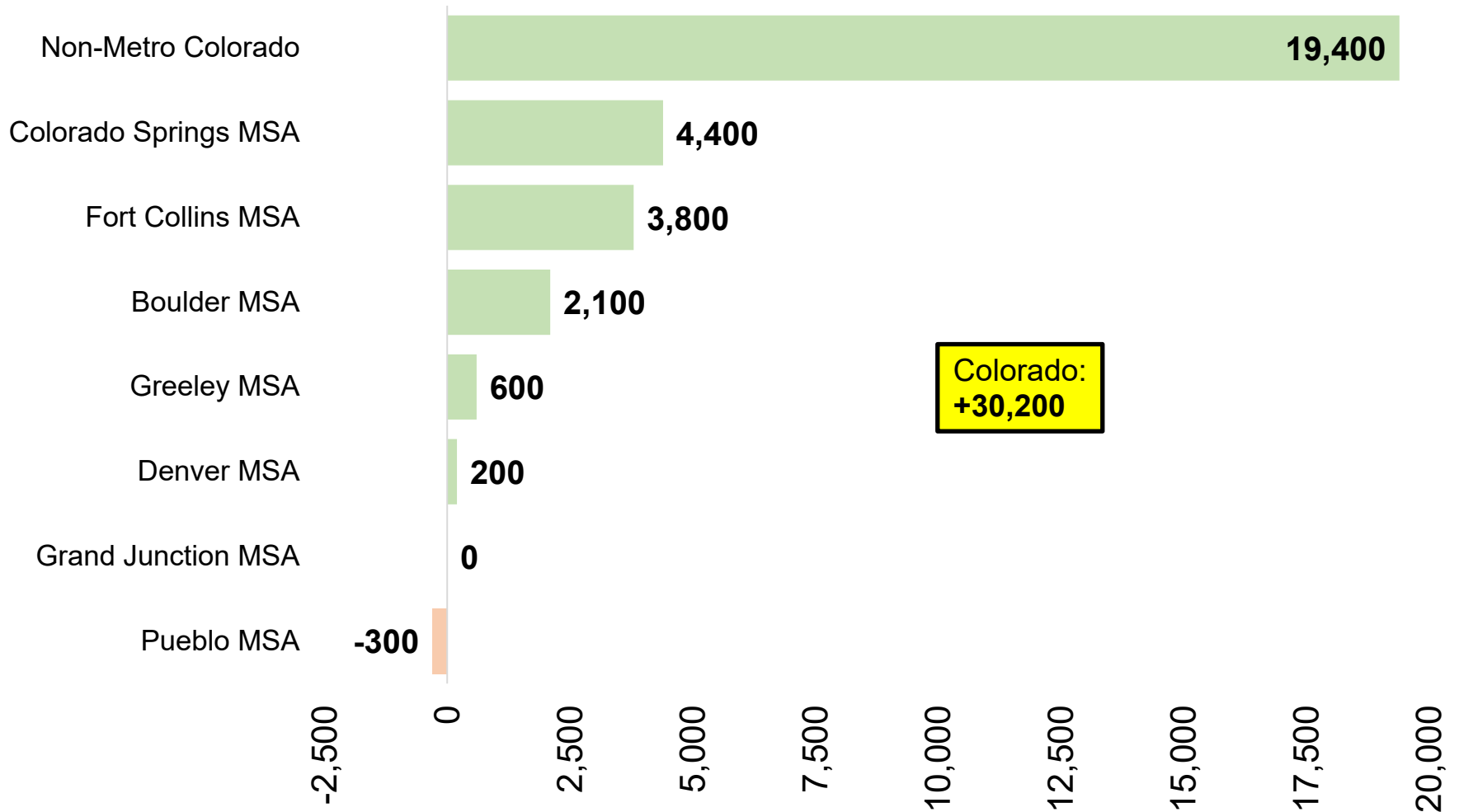


## May 2023 Over the Year Growth Rates, by Industry Sector



Source: Colorado Department of Labor and Employment; Bureau of Labor Statistics  
Data seasonally adjusted, May 2022 to May 2023

## Change in Payroll Jobs Over Past 12 Months, by Colorado Substate Area

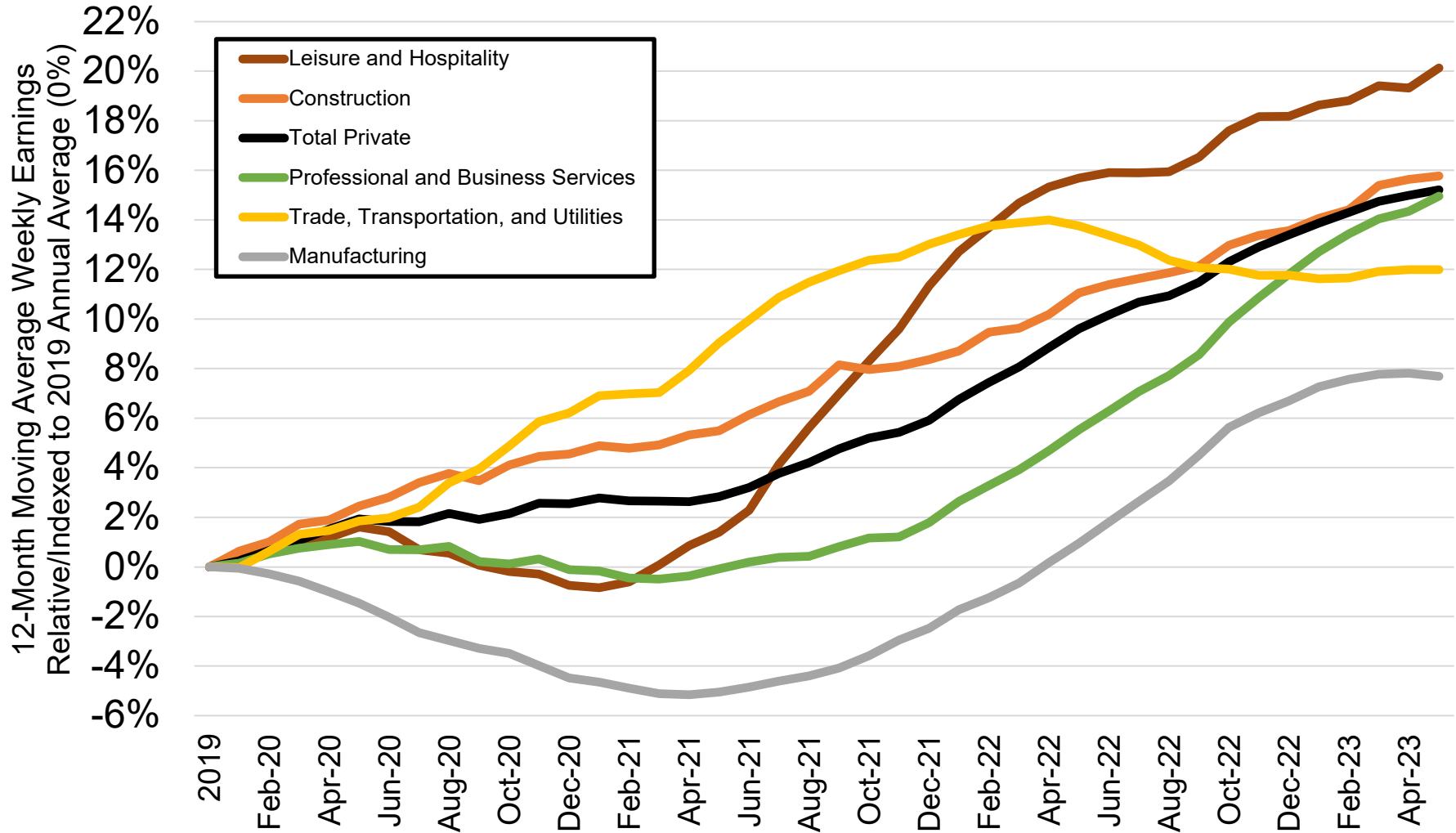


Source: Colorado Department of Labor and Employment; Bureau of Labor Statistics

Data seasonally adjusted, May 2022 to May 2023

Note: MSA = Metropolitan Statistical Area; Non-Metro Colorado = residual of state that is not an MSA (47 counties)

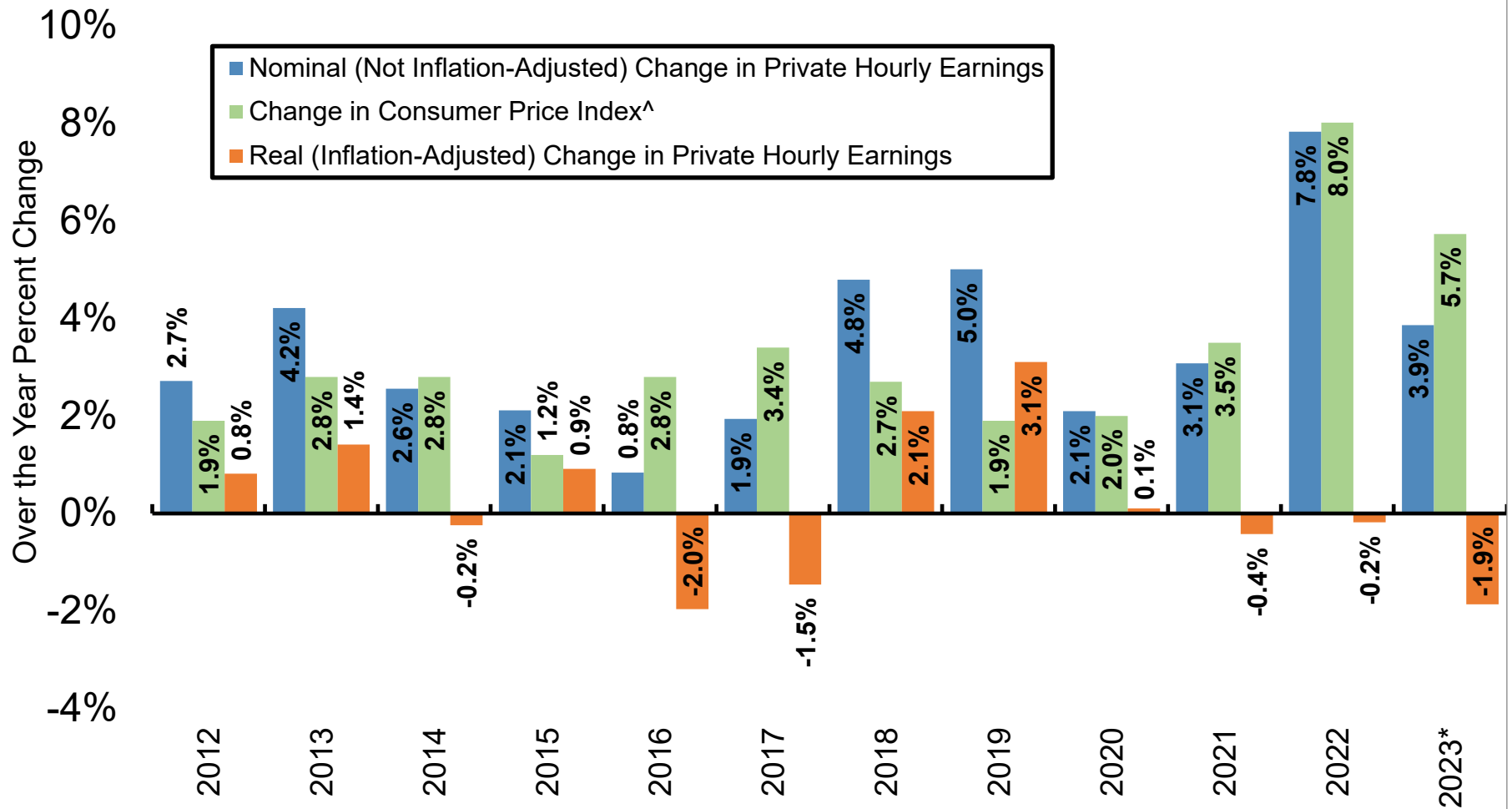
## Percent Change in Average Weekly Earnings Since 2019, by Select Colorado Industry



Source: Colorado Department of Labor and Employment; Bureau of Labor Statistics

Data not seasonally adjusted. Note: each month on this chart represents a 12-month moving average and measures the percent change in average weekly earnings compared to the 2019 annual average for that industry.

## Nominal and Real Percent Change in Colorado's Private Average Hourly Earnings Since 2012

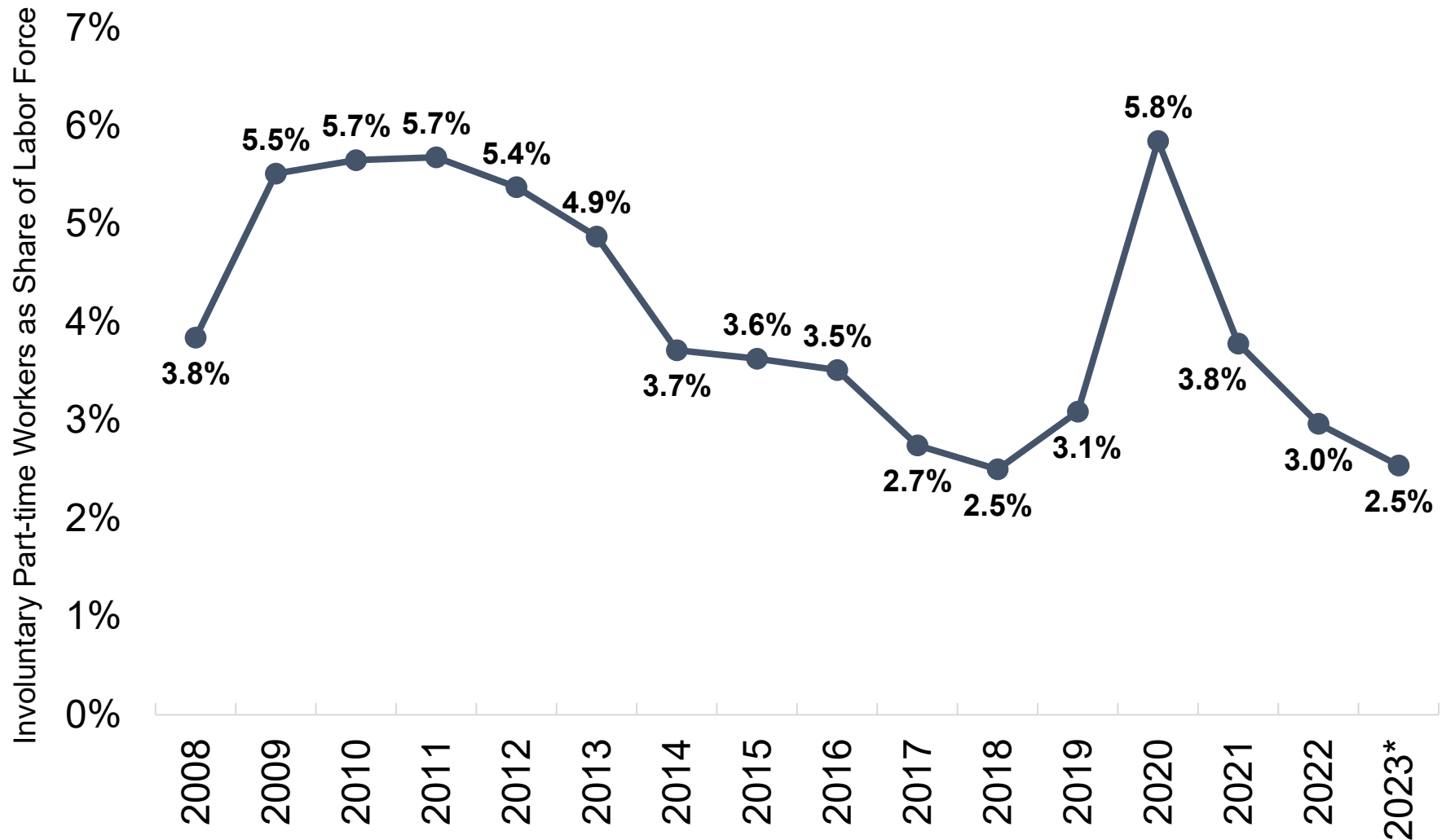


Source: Colorado Department of Labor and Employment estimates; Bureau of Labor Statistics

<sup>^</sup>Note: Denver-Aurora-Lakewood CPI-U estimates were utilized to adjust average hourly earnings for inflation.

That data is available here: <https://www.bls.gov/cpi/regional-resources.htm>. \*2023 nominal earnings growth is measured using data for January to May compared to the same period the year prior, while real earnings were adjusted using the average over-the-year change in CPI-U for January, March, and May 2023.

## Involuntary Part-Time Workers as Share of Labor Force

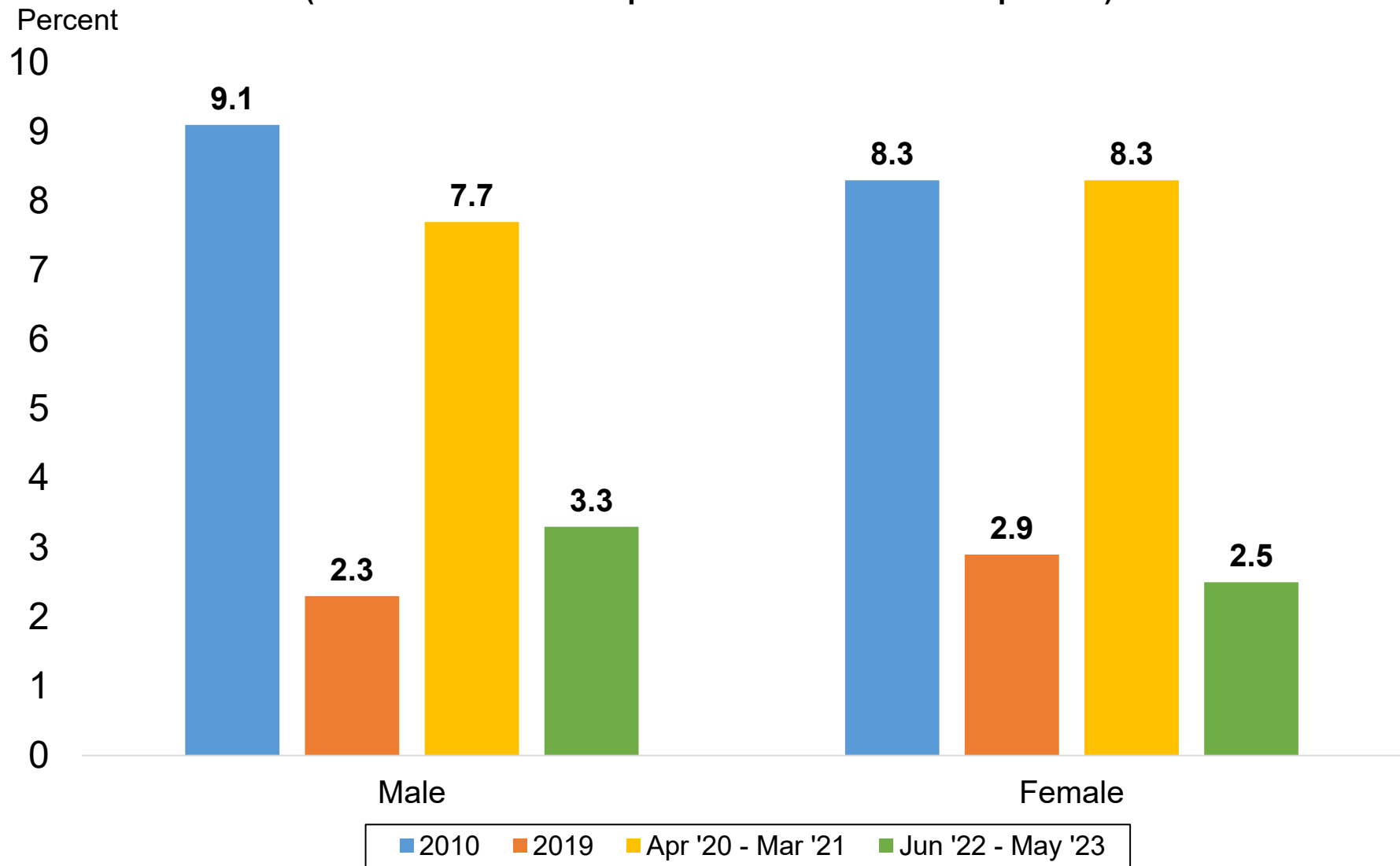


Source: Current Population Survey

Data not seasonally adjusted. Involuntary part-time workers are those individuals who are working part-time hours (34 hours or less), but prefer full-time hours (35+ hours).

\*Average through the first five months of 2023.

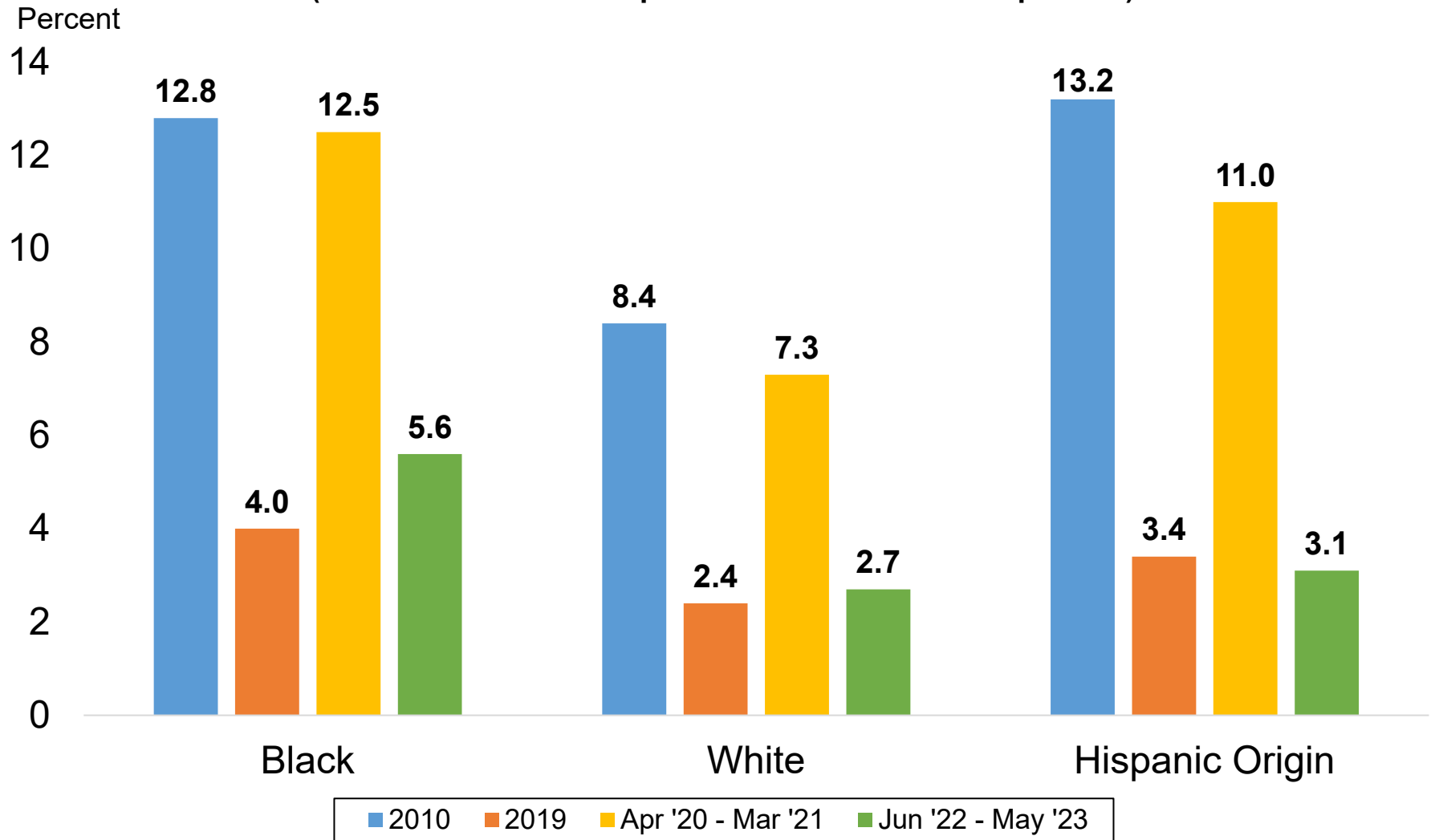
## Unemployment Rates by Gender (Most recent 12-month period available vs. select periods)



Source: Current Population Survey

Data not seasonally adjusted. Unemployment rates by gender for individuals 16 years and older.

## Unemployment Rates by Race & Ethnicity (Most recent 12-month period available vs. select periods)

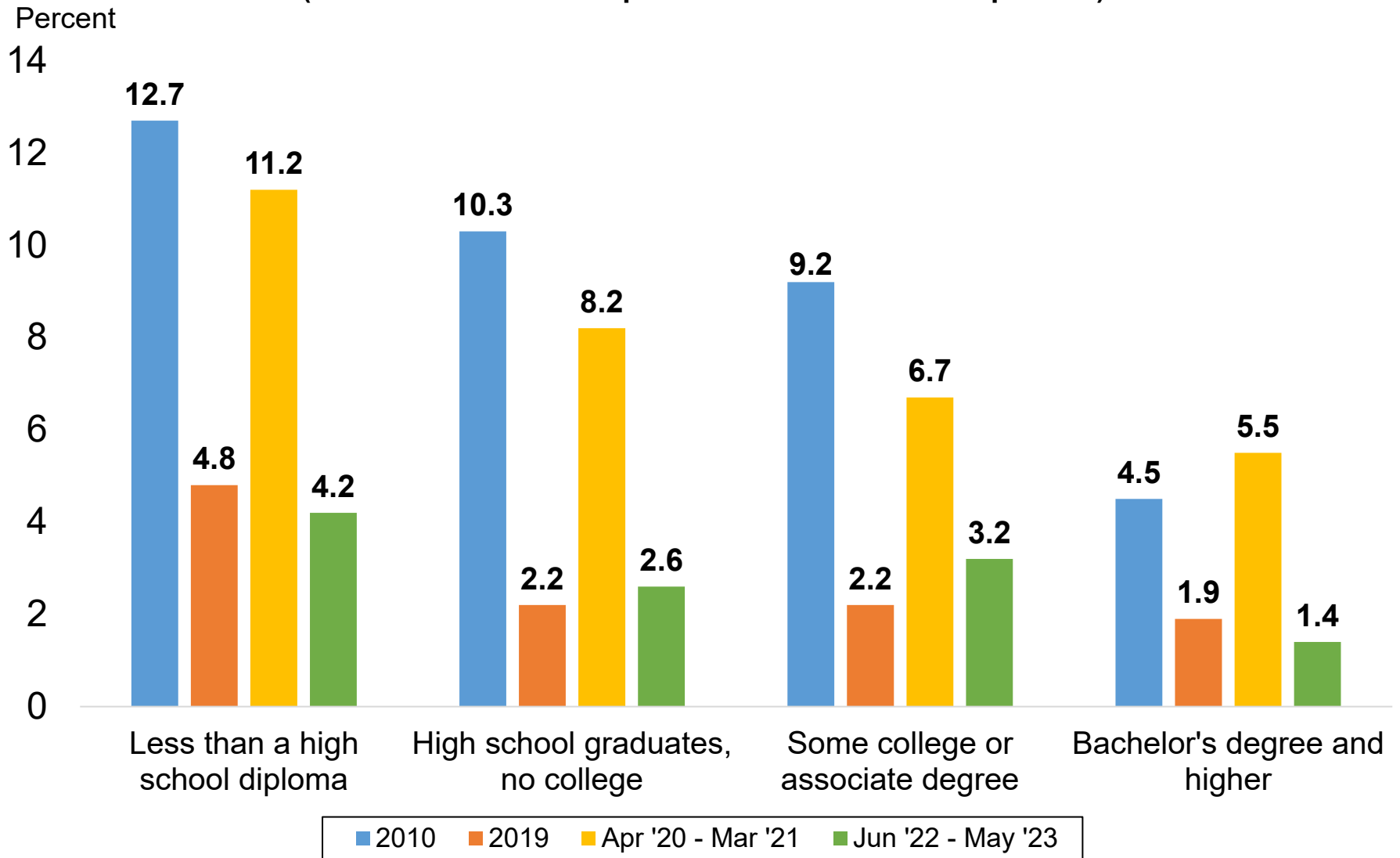


Source: Current Population Survey

Data not seasonally adjusted. Other race categories excluded due to small sample size. Hispanic origin category is not mutually exclusive (i.e. hispanic and non-hispanic ethnicities are represented in both race categories).

# Unemployment Rates by Educational Attainment

(Most recent 12-month period available vs. select periods)



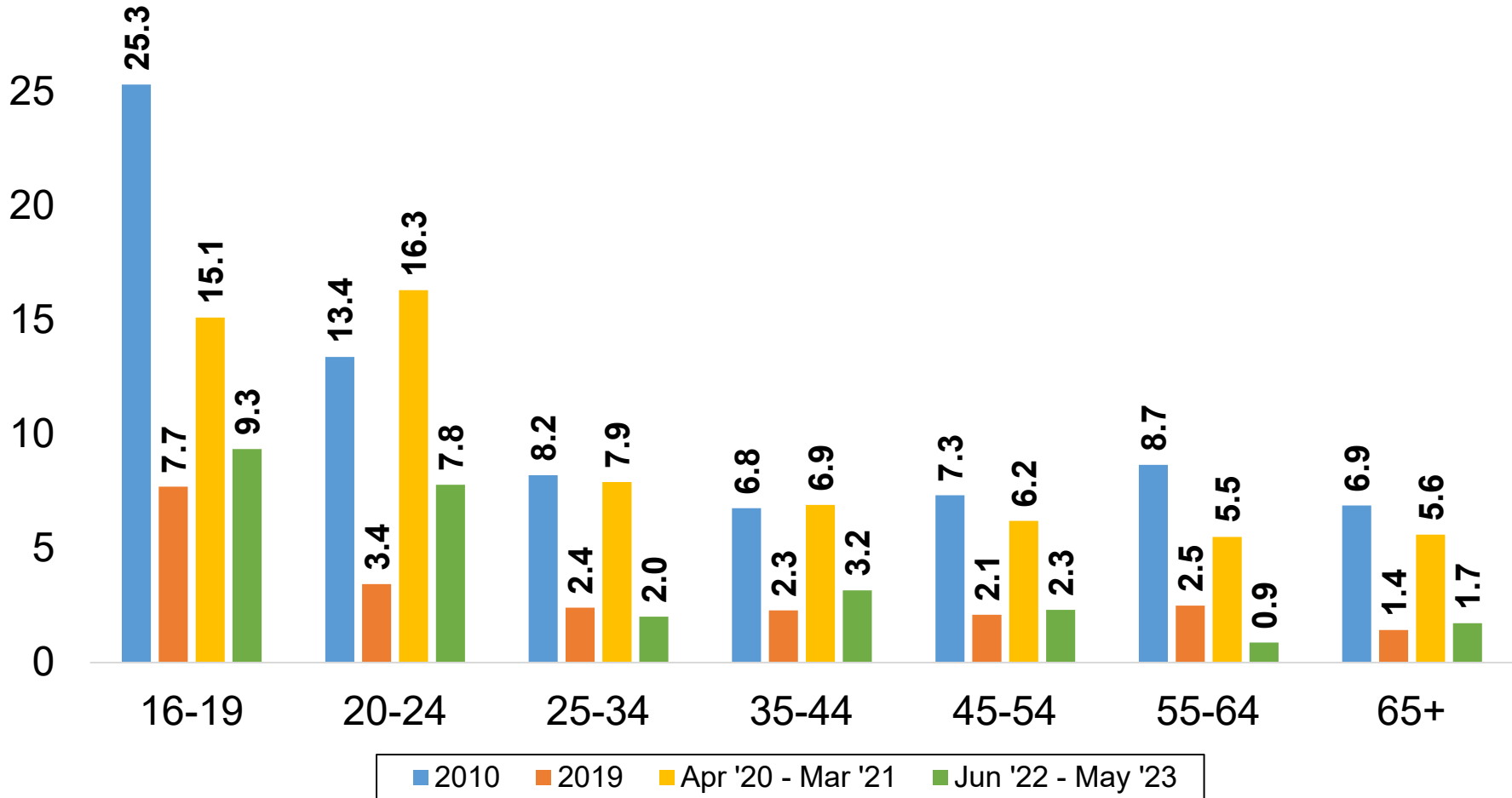
Source: Current Population Survey

Data not seasonally adjusted. Unemployment rates by educational attainment for individuals 25 years and over.



## Unemployment Rates by Age Group (Most recent 12-month period available vs. select periods)

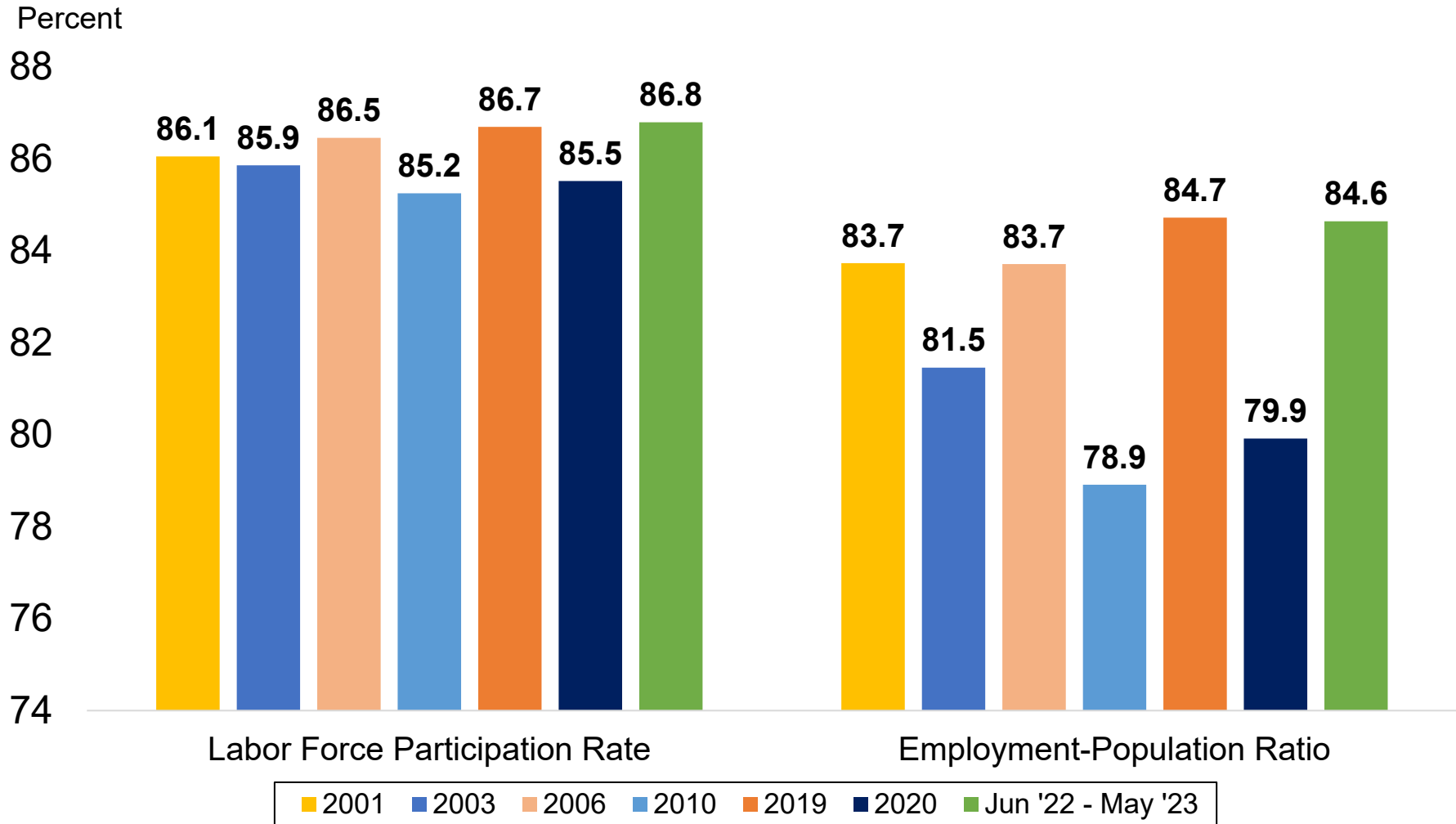
Percent  
30



Source: Current Population Survey  
Data not seasonally adjusted.

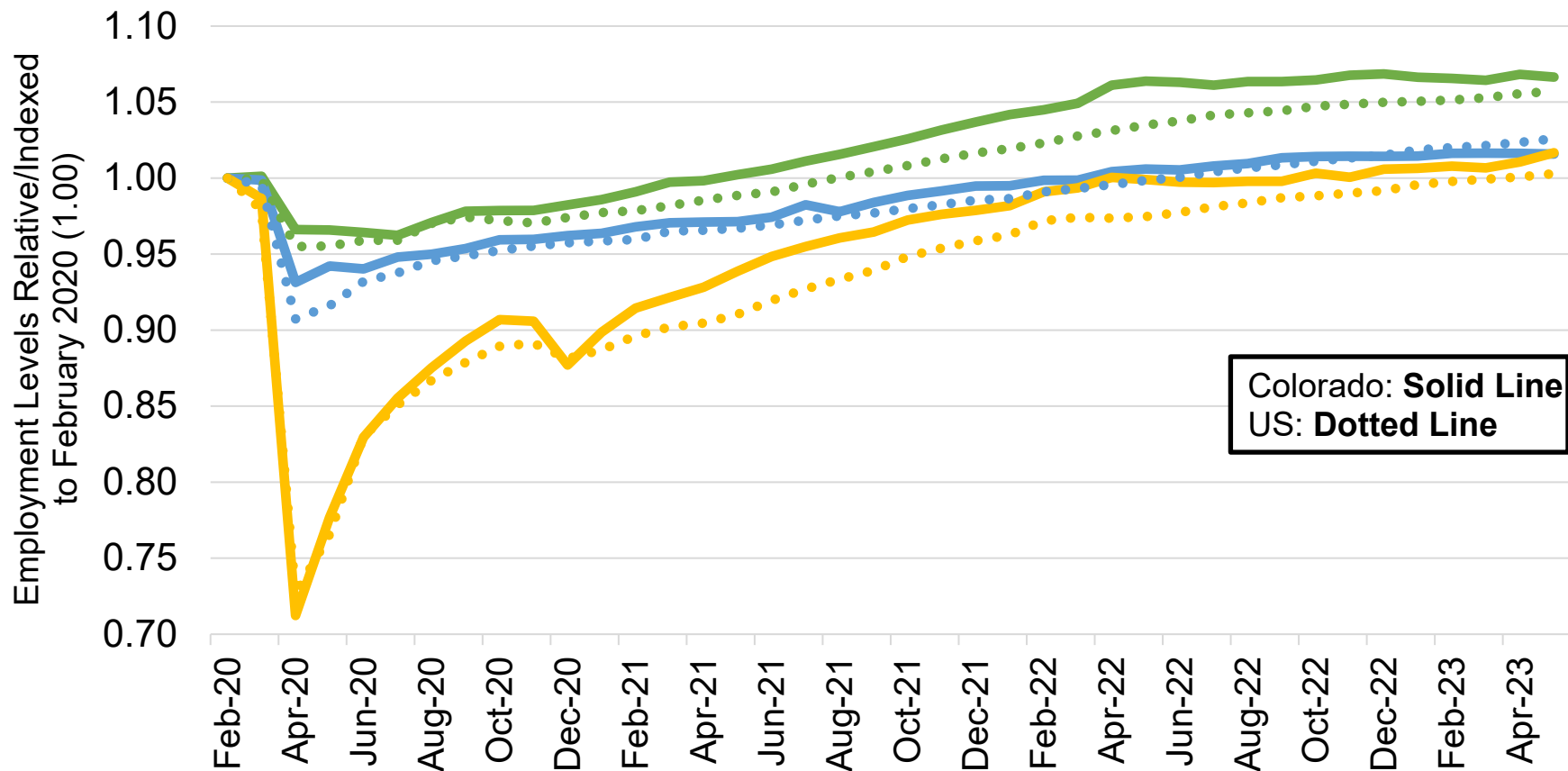
# Colorado Labor Force Participation Rates and Employment-Population Ratios, Ages 25 to 54

(Most recent 12-month period available vs. select years)



Source: Current Population Survey  
Data not seasonally adjusted.

## Job Loss and Recovery by Low, Medium, and High Wage Industries (Colorado & U.S.)

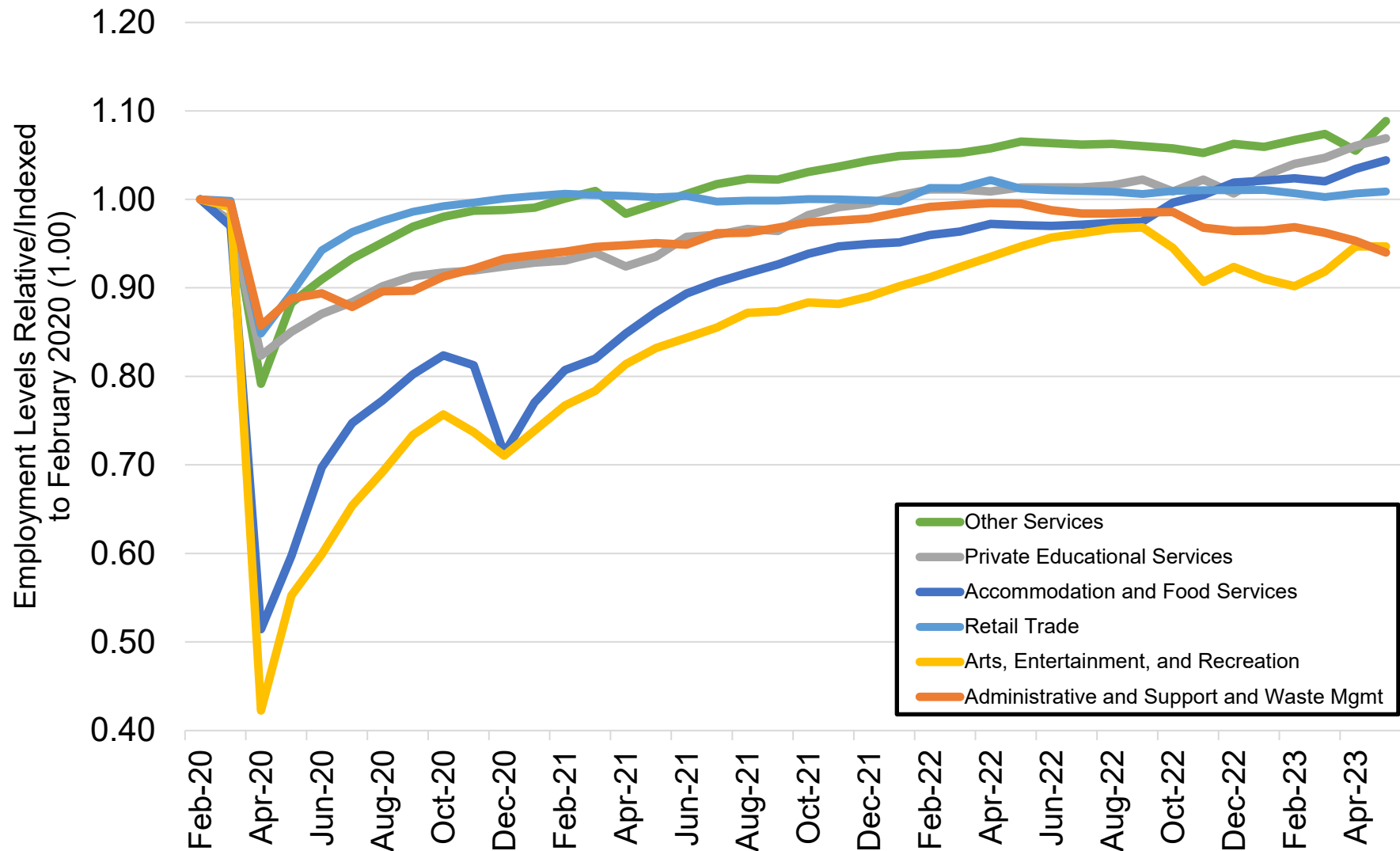


Source: Colorado Department of Labor and Employment; Bureau of Labor Statistics

Data seasonally adjusted. Note: low, medium, and high wage industries are determined by the 2019 state-level average weekly wage estimates from the Quarterly Census of Employment and Wages. **Low wage industries include:** retail trade; admin support/waste mgmt; private education services; arts, entertainment, and recreation; accommodation and food services; and other services. **Medium wage industries include:** construction; manufacturing; transportation, warehousing, and utilities; real estate, rental, and leasing; private health care and social assistance; state government; and local government.

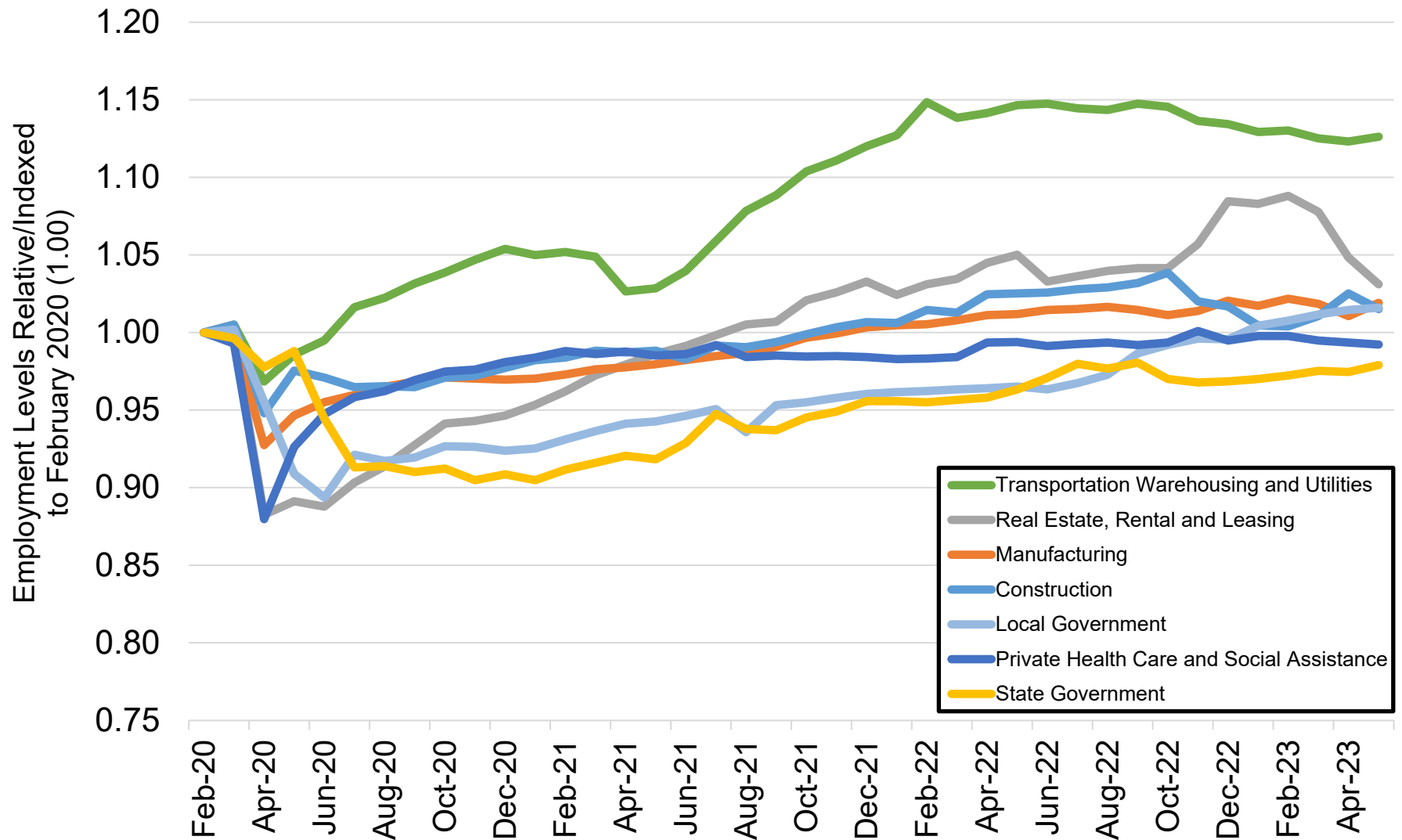
**High wage industries include:** mining and logging; wholesale trade; information; finance and insurance; professional and technical services; management of companies; and federal government.

## Colorado Job Loss & Recovery by Low Wage Industries



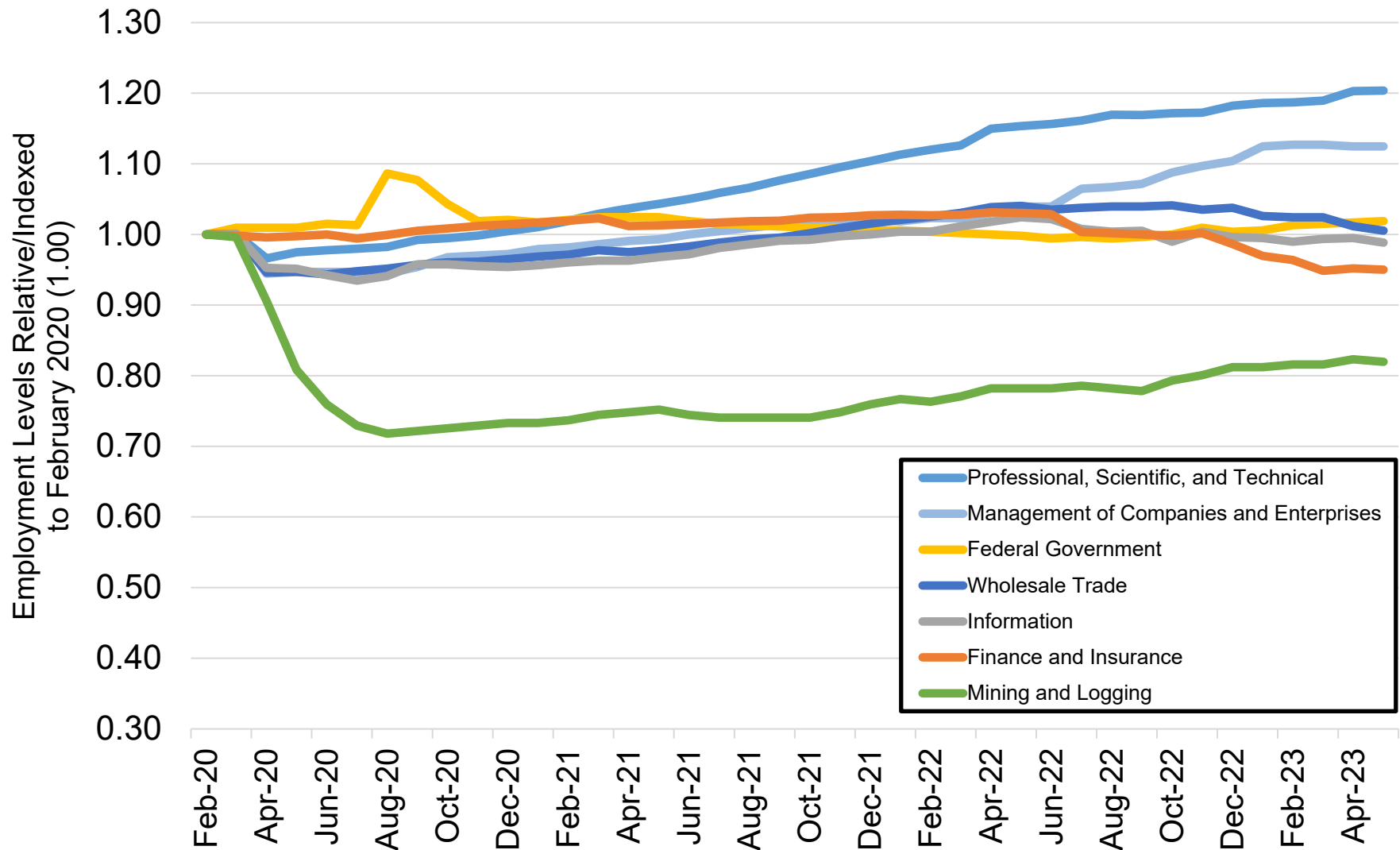
Source: Colorado Department of Labor and Employment; Bureau of Labor Statistics  
 Data seasonally adjusted. Note: low wage industries are determined by the 2019 state-level average weekly wage estimates from the Quarterly Census of Employment and Wages.

## Colorado Job Loss & Recovery by Medium Wage Industries



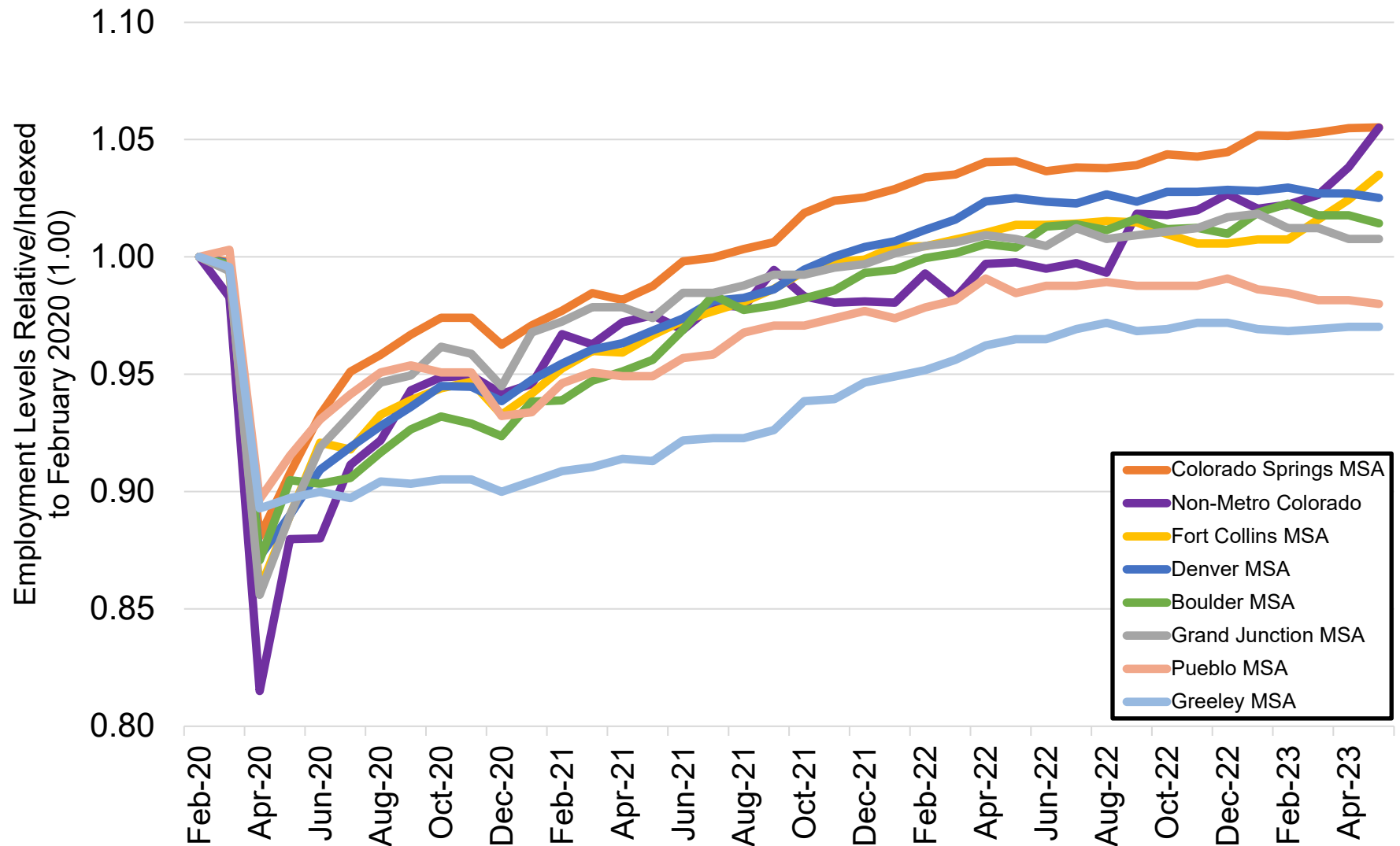
Source: Colorado Department of Labor and Employment; Bureau of Labor Statistics  
 Data seasonally adjusted. Note: medium wage industries are determined by the 2019 state-level average weekly wage estimates from the Quarterly Census of Employment and Wages.

## Colorado Job Loss & Recovery by High Wage Industries



Source: Colorado Department of Labor and Employment; Bureau of Labor Statistics  
 Data seasonally adjusted. Note: high wage industries are determined by the 2019 state-level average weekly wage estimates from the Quarterly Census of Employment and Wages.

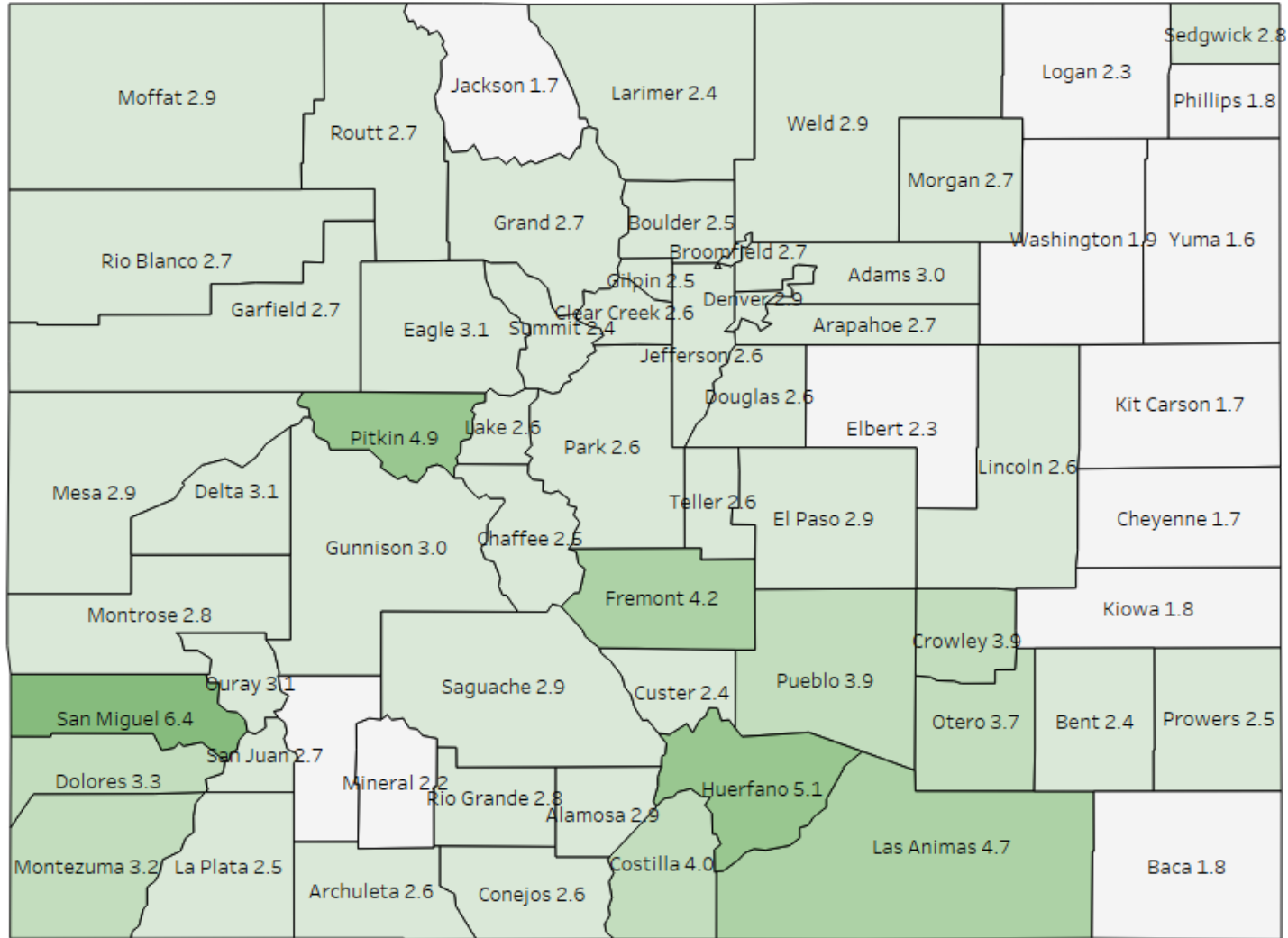
## Colorado Job Loss & Recovery by Colorado Substate Area



Source: Colorado Department of Labor and Employment; Bureau of Labor Statistics

Data seasonally adjusted. Note: MSA = Metropolitan Statistical Area; Non-Metro Colorado = residual of state that is not an MSA (47 counties).

# County Unemployment Rates May 2023





**LABOR FORCE SUMMARY**  
**COLORADO**  
Preliminary Estimates for May 2023

| <b>LABOR FORCE DATA (VALUES IN THOUSANDS)</b> |               |               |               |                          |             |
|-----------------------------------------------|---------------|---------------|---------------|--------------------------|-------------|
| <b>SEASONALLY ADJUSTED:</b>                   |               |               |               | <b>Change from last:</b> |             |
|                                               | <b>May-23</b> | <b>Apr-23</b> | <b>May-22</b> | <b>Month</b>             | <b>Year</b> |
| <b>Total Civilian Labor Force</b>             | 3,244.4       | 3,235.0       | 3,207.6       | 9.4                      | 36.8        |
| <b>Unemployment</b>                           | 90.0          | 89.4          | 94.1          | 0.6                      | -4.2        |
| <b>Unemployment Rate (%)</b>                  | 2.8           | 2.8           | 2.9           | 0.0                      | -0.1        |
| <b>Employment</b>                             | 3,154.5       | 3,145.6       | 3,113.5       | 8.8                      | 41.0        |
| <b>UNADJUSTED FOR SEASONALITY:</b>            |               |               |               | <b>Change from last:</b> |             |
|                                               | <b>May-23</b> | <b>Apr-23</b> | <b>May-22</b> | <b>Month</b>             | <b>Year</b> |
| <b>Total Civilian Labor Force</b>             | 3,236.7       | 3,217.1       | 3,186.8       | 19.6                     | 50.0        |
| <b>Unemployment</b>                           | 90.9          | 78.6          | 86.8          | 12.3                     | 4.0         |
| <b>Unemployment Rate (%)</b>                  | 2.8           | 2.4           | 2.7           | 0.4                      | 0.1         |
| <b>Employment</b>                             | 3,145.9       | 3,138.5       | 3,100.0       | 7.3                      | 45.9        |

| <b>WAGE AND SALARY EMPLOYMENT DATA (VALUES IN THOUSANDS)</b> |               |               |               |                          |             |
|--------------------------------------------------------------|---------------|---------------|---------------|--------------------------|-------------|
| <b>SEASONALLY ADJUSTED:</b>                                  |               |               |               | <b>Change from last:</b> |             |
|                                                              | <b>May-23</b> | <b>Apr-23</b> | <b>May-22</b> | <b>Month</b>             | <b>Year</b> |
| <b>Mining &amp; Logging</b>                                  | 21.8          | 21.9          | 20.8          | -0.1                     | 1.0         |
| <b>Construction</b>                                          | 181.7         | 183.5         | 183.5         | -1.8                     | -1.8        |
| <b>Manufacturing</b>                                         | 154.4         | 153.1         | 153.3         | 1.3                      | 1.1         |
| <b>Trade, Transportation, &amp; Utilities</b>                | 496.3         | 496.1         | 503.1         | 0.2                      | -6.8        |
| <b>Information</b>                                           | 77.1          | 77.6          | 79.9          | -0.5                     | -2.8        |
| <b>Financial Activities</b>                                  | 172.2         | 173.4         | 182.8         | -1.2                     | -10.6       |
| <b>Professional &amp; Business Services</b>                  | 492.0         | 493.9         | 485.0         | -1.9                     | 7.0         |
| <b>Educational &amp; Health Services</b>                     | 354.8         | 354.8         | 352.8         | 0.0                      | 2.0         |
| <b>Leisure &amp; Hospitality</b>                             | 358.9         | 356.0         | 337.7         | 2.9                      | 21.2        |
| <b>Other Services</b>                                        | 126.6         | 122.7         | 123.9         | 3.9                      | 2.7         |
| <b>Government</b>                                            | 464.7         | 463.6         | 447.5         | 1.1                      | 17.2        |
| <b>TOTAL NONAG</b>                                           | 2,900.5       | 2,896.6       | 2,870.3       | 3.9                      | 30.2        |
| <b>Labor Disputants</b>                                      | 0.0           | 0.0           | 0.0           | 0.0                      | 0.0         |
| <b>UNADJUSTED FOR SEASONALITY:</b>                           |               |               |               | <b>Change from last:</b> |             |
|                                                              | <b>May-23</b> | <b>Apr-23</b> | <b>May-22</b> | <b>Month</b>             | <b>Year</b> |
| <b>Mining &amp; Logging</b>                                  | 21.8          | 22.1          | 20.7          | -0.3                     | 1.1         |
| <b>Construction</b>                                          | 183.2         | 181.9         | 184.5         | 1.3                      | -1.3        |
| <b>Manufacturing</b>                                         | 154.2         | 152.5         | 152.7         | 1.7                      | 1.5         |
| <b>Trade, Transportation, &amp; Utilities</b>                | 490.7         | 490.9         | 499.0         | -0.2                     | -8.3        |
| <b>Information</b>                                           | 76.9          | 77.2          | 80.0          | -0.3                     | -3.1        |
| <b>Financial Activities</b>                                  | 170.6         | 172.1         | 182.2         | -1.5                     | -11.6       |
| <b>Professional &amp; Business Services</b>                  | 493.5         | 493.7         | 486.8         | -0.2                     | 6.7         |
| <b>Educational &amp; Health Services</b>                     | 355.0         | 354.1         | 354.0         | 0.9                      | 1.0         |
| <b>Leisure &amp; Hospitality</b>                             | 351.4         | 352.5         | 330.7         | -1.1                     | 20.7        |
| <b>Other Services</b>                                        | 126.6         | 122.7         | 124.7         | 3.9                      | 1.9         |
| <b>Government</b>                                            | 472.4         | 467.7         | 455.5         | 4.7                      | 16.9        |
| <b>TOTAL NONAG</b>                                           | 2,896.3       | 2,887.4       | 2,870.8       | 8.9                      | 25.5        |
| <b>Labor Disputants</b>                                      | 0.0           | 0.0           | 0.0           | 0.0                      | 0.0         |

Source: Colorado Department of Labor & Employment; Bureau of Labor Statistics

### Not Seasonally Adjusted Labor Force

|                                      | May 2023    |            |              |      | April 2023  |            |              |      |
|--------------------------------------|-------------|------------|--------------|------|-------------|------------|--------------|------|
|                                      | Labor Force | Employment | Unemployment | Rate | Labor force | Employment | Unemployment | Rate |
| <b>Colorado</b>                      | 3,236,746   | 3,145,869  | 90,877       | 2.8  | 3,217,118   | 3,138,544  | 78,574       | 2.4  |
| <b>Metropolitan Statistical Area</b> |             |            |              |      |             |            |              |      |
| Boulder                              | 204,815     | 199,636    | 5,179        | 2.5  | 203,404     | 199,146    | 4,258        | 2.1  |
| Colorado Springs                     | 379,780     | 368,713    | 11,067       | 2.9  | 376,171     | 366,583    | 9,588        | 2.5  |
| Denver-Aurora-Lakewood               | 1,739,620   | 1,691,262  | 48,358       | 2.8  | 1,731,137   | 1,688,766  | 42,371       | 2.4  |
| Fort Collins                         | 218,302     | 213,010    | 5,292        | 2.4  | 212,745     | 208,234    | 4,511        | 2.1  |
| Grand Junction                       | 77,327      | 75,058     | 2,269        | 2.9  | 76,648      | 74,615     | 2,033        | 2.7  |
| Greeley                              | 171,556     | 166,660    | 4,896        | 2.9  | 169,453     | 165,268    | 4,185        | 2.5  |
| Pueblo                               | 76,525      | 73,542     | 2,983        | 3.9  | 75,809      | 73,132     | 2,677        | 3.5  |
| <b>Counties</b>                      |             |            |              |      |             |            |              |      |
| Adams                                | 284,073     | 275,550    | 8,523        | 3.0  | 282,465     | 274,895    | 7,570        | 2.7  |
| Alamosa                              | 8,561       | 8,313      | 248          | 2.9  | 8,296       | 8,094      | 202          | 2.4  |
| Arapahoe                             | 378,021     | 367,626    | 10,395       | 2.7  | 376,295     | 367,206    | 9,089        | 2.4  |
| Archuleta                            | 7,165       | 6,977      | 188          | 2.6  | 6,941       | 6,756      | 185          | 2.7  |
| Baca                                 | 2,094       | 2,057      | 37           | 1.8  | 2,017       | 1,988      | 29           | 1.4  |
| Bent                                 | 1,821       | 1,778      | 43           | 2.4  | 1,755       | 1,711      | 44           | 2.5  |
| Boulder                              | 204,815     | 199,636    | 5,179        | 2.5  | 203,404     | 199,146    | 4,258        | 2.1  |
| Broomfield                           | 42,997      | 41,836     | 1,161        | 2.7  | 42,757      | 41,763     | 994          | 2.3  |
| Chaffee                              | 10,057      | 9,805      | 252          | 2.5  | 9,930       | 9,702      | 228          | 2.3  |
| Cheyenne                             | 1,061       | 1,043      | 18           | 1.7  | 999         | 984        | 15           | 1.5  |
| Clear Creek                          | 6,200       | 6,041      | 159          | 2.6  | 6,158       | 6,032      | 126          | 2.0  |
| Conejos                              | 4,147       | 4,041      | 106          | 2.6  | 4,001       | 3,907      | 94           | 2.3  |
| Costilla                             | 1,843       | 1,770      | 73           | 4.0  | 1,770       | 1,706      | 64           | 3.6  |
| Crowley                              | 1,397       | 1,342      | 55           | 3.9  | 1,375       | 1,325      | 50           | 3.6  |
| Custer                               | 2,533       | 2,471      | 62           | 2.4  | 2,337       | 2,287      | 50           | 2.1  |
| Delta                                | 13,460      | 13,039     | 421          | 3.1  | 13,080      | 12,691     | 389          | 3.0  |
| Denver                               | 440,351     | 427,369    | 12,982       | 2.9  | 438,378     | 426,842    | 11,536       | 2.6  |
| Dolores                              | 1,206       | 1,166      | 40           | 3.3  | 1,176       | 1,144      | 32           | 2.7  |
| Douglas                              | 210,136     | 204,711    | 5,425        | 2.6  | 208,982     | 204,414    | 4,568        | 2.2  |
| Eagle                                | 33,371      | 32,331     | 1,040        | 3.1  | 36,551      | 35,870     | 681          | 1.9  |
| El Paso                              | 366,119     | 355,411    | 10,708       | 2.9  | 362,600     | 353,331    | 9,269        | 2.6  |
| Elbert                               | 16,176      | 15,797     | 379          | 2.3  | 15,990      | 15,685     | 305          | 1.9  |
| Fremont                              | 14,520      | 13,905     | 615          | 4.2  | 14,234      | 13,680     | 554          | 3.9  |
| Garfield                             | 30,309      | 29,484     | 825          | 2.7  | 31,492      | 30,781     | 711          | 2.3  |
| Gilpin                               | 3,963       | 3,862      | 101          | 2.5  | 3,940       | 3,859      | 81           | 2.1  |
| Grand                                | 8,716       | 8,479      | 237          | 2.7  | 9,308       | 9,110      | 198          | 2.1  |
| Gunnison                             | 11,539      | 11,196     | 343          | 3.0  | 11,856      | 11,587     | 269          | 2.3  |
| Hinsdale                             | 460         | 451        | 9            | 2.0  | 416         | 408        | 8            | 1.9  |
| Huerfano                             | 2,451       | 2,326      | 125          | 5.1  | 2,371       | 2,259      | 112          | 4.7  |
| Jackson                              | 1,060       | 1,042      | 18           | 1.7  | 989         | 971        | 18           | 1.8  |
| Jefferson                            | 345,965     | 337,036    | 8,929        | 2.6  | 344,486     | 336,648    | 7,838        | 2.3  |
| Kiowa                                | 902         | 886        | 16           | 1.8  | 866         | 852        | 14           | 1.6  |
| Kit Carson                           | 4,258       | 4,185      | 73           | 1.7  | 4,091       | 4,034      | 57           | 1.4  |
| La Plata                             | 32,139      | 31,348     | 791          | 2.5  | 31,898      | 31,204     | 694          | 2.2  |
| Lake                                 | 4,895       | 4,767      | 128          | 2.6  | 5,229       | 5,142      | 87           | 1.7  |
| Larimer                              | 218,302     | 213,010    | 5,292        | 2.4  | 212,745     | 208,234    | 4,511        | 2.1  |
| Las Animas                           | 6,098       | 5,813      | 285          | 4.7  | 5,985       | 5,754      | 231          | 3.9  |
| Lincoln                              | 2,240       | 2,182      | 58           | 2.6  | 2,157       | 2,106      | 51           | 2.4  |
| Logan                                | 10,319      | 10,082     | 237          | 2.3  | 10,144      | 9,942      | 202          | 2.0  |
| Mesa                                 | 77,327      | 75,058     | 2,269        | 2.9  | 76,648      | 74,615     | 2,033        | 2.7  |
| Mineral                              | 451         | 441        | 10           | 2.2  | 468         | 460        | 8            | 1.7  |
| Moffat                               | 6,907       | 6,707      | 200          | 2.9  | 6,828       | 6,641      | 187          | 2.7  |
| Montezuma                            | 12,672      | 12,265     | 407          | 3.2  | 12,362      | 11,959     | 403          | 3.3  |
| Montrose                             | 21,647      | 21,036     | 611          | 2.8  | 21,212      | 20,669     | 543          | 2.6  |
| Morgan                               | 15,861      | 15,435     | 426          | 2.7  | 15,442      | 15,077     | 365          | 2.4  |
| Otero                                | 7,949       | 7,653      | 296          | 3.7  | 7,769       | 7,511      | 258          | 3.3  |
| Ouray                                | 2,435       | 2,359      | 76           | 3.1  | 2,333       | 2,265      | 68           | 2.9  |
| Park                                 | 11,738      | 11,434     | 304          | 2.6  | 11,686      | 11,422     | 264          | 2.3  |
| Phillips                             | 2,470       | 2,426      | 44           | 1.8  | 2,344       | 2,310      | 34           | 1.5  |
| Pitkin                               | 10,587      | 10,072     | 515          | 4.9  | 10,804      | 10,535     | 269          | 2.5  |
| Prowers                              | 6,358       | 6,201      | 157          | 2.5  | 6,187       | 6,060      | 127          | 2.1  |
| Pueblo                               | 76,525      | 73,542     | 2,983        | 3.9  | 75,809      | 73,132     | 2,677        | 3.5  |
| Rio Blanco                           | 2,952       | 2,873      | 79           | 2.7  | 2,851       | 2,785      | 66           | 2.3  |
| Rio Grande                           | 5,416       | 5,264      | 152          | 2.8  | 5,184       | 5,038      | 146          | 2.8  |
| Routt                                | 15,290      | 14,881     | 409          | 2.7  | 15,689      | 15,370     | 319          | 2.0  |
| Saguache                             | 3,518       | 3,416      | 102          | 2.9  | 3,335       | 3,251      | 84           | 2.5  |
| San Juan                             | 511         | 497        | 14           | 2.7  | 493         | 480        | 13           | 2.6  |
| San Miguel                           | 4,986       | 4,667      | 319          | 6.4  | 5,091       | 4,825      | 266          | 5.2  |
| Sedgwick                             | 1,028       | 999        | 29           | 2.8  | 966         | 941        | 25           | 2.6  |
| Summit                               | 20,544      | 20,043     | 501          | 2.4  | 23,036      | 22,656     | 380          | 1.6  |
| Teller                               | 13,661      | 13,302     | 359          | 2.6  | 13,571      | 13,252     | 319          | 2.4  |
| Washington                           | 2,846       | 2,792      | 54           | 1.9  | 2,692       | 2,651      | 41           | 1.5  |
| Weld                                 | 171,556     | 166,660    | 4,896        | 2.9  | 169,453     | 165,268    | 4,185        | 2.5  |
| Yuma                                 | 5,769       | 5,677      | 92           | 1.6  | 5,394       | 5,317      | 77           | 1.4  |

All estimates made in cooperation with the U.S. Department of Labor, Bureau of Labor Statistics and adjusted to Current Population Survey data.

Estimates have been revised to incorporate population data from the American Community Survey.

Colorado Department of Labor and Employment 2023

**Not Seasonally Adjusted Labor Force**

|                                      | May 2023    |            |              |      | May 2022    |            |              |      |
|--------------------------------------|-------------|------------|--------------|------|-------------|------------|--------------|------|
|                                      | Labor Force | Employment | Unemployment | Rate | Labor force | Employment | Unemployment | Rate |
| <b>Colorado</b>                      | 3,236,746   | 3,145,869  | 90,877       | 2.8  | 3,186,795   | 3,099,965  | 86,830       | 2.7  |
| <b>Metropolitan Statistical Area</b> |             |            |              |      |             |            |              |      |
| Boulder                              | 204,815     | 199,636    | 5,179        | 2.5  | 201,483     | 196,896    | 4,587        | 2.3  |
| Colorado Springs                     | 379,780     | 368,713    | 11,067       | 2.9  | 371,430     | 360,751    | 10,679       | 2.9  |
| Denver-Aurora-Lakewood               | 1,739,620   | 1,691,262  | 48,358       | 2.8  | 1,724,240   | 1,678,486  | 45,754       | 2.7  |
| Fort Collins                         | 218,302     | 213,010    | 5,292        | 2.4  | 211,467     | 206,334    | 5,133        | 2.4  |
| Grand Junction                       | 77,327      | 75,058     | 2,269        | 2.9  | 76,886      | 74,649     | 2,237        | 2.9  |
| Greeley                              | 171,556     | 166,660    | 4,896        | 2.9  | 168,854     | 163,993    | 4,861        | 2.9  |
| Pueblo                               | 76,525      | 73,542     | 2,983        | 3.9  | 76,550      | 73,547     | 3,003        | 3.9  |
| <b>Counties</b>                      |             |            |              |      |             |            |              |      |
| Adams                                | 284,073     | 275,550    | 8,523        | 3.0  | 281,784     | 273,404    | 8,380        | 3.0  |
| Alamosa                              | 8,561       | 8,313      | 248          | 2.9  | 8,245       | 7,996      | 249          | 3.0  |
| Arapahoe                             | 378,021     | 367,626    | 10,395       | 2.7  | 375,268     | 364,891    | 10,377       | 2.8  |
| Archuleta                            | 7,165       | 6,977      | 188          | 2.6  | 6,954       | 6,750      | 204          | 2.9  |
| Baca                                 | 2,094       | 2,057      | 37           | 1.8  | 2,042       | 2,009      | 33           | 1.6  |
| Bent                                 | 1,821       | 1,778      | 43           | 2.4  | 1,738       | 1,680      | 58           | 3.3  |
| Boulder                              | 204,815     | 199,636    | 5,179        | 2.5  | 201,483     | 196,896    | 4,587        | 2.3  |
| Broomfield                           | 42,997      | 41,836     | 1,161        | 2.7  | 42,499      | 41,526     | 973          | 2.3  |
| Chaffee                              | 10,057      | 9,805      | 252          | 2.5  | 9,633       | 9,407      | 226          | 2.3  |
| Cheyenne                             | 1,061       | 1,043      | 18           | 1.7  | 1,056       | 1,039      | 17           | 1.6  |
| Clear Creek                          | 6,200       | 6,041      | 159          | 2.6  | 6,153       | 5,994      | 159          | 2.6  |
| Conejos                              | 4,147       | 4,041      | 106          | 2.6  | 3,998       | 3,882      | 116          | 2.9  |
| Costilla                             | 1,843       | 1,770      | 73           | 4.0  | 1,767       | 1,697      | 70           | 4.0  |
| Crowley                              | 1,397       | 1,342      | 55           | 3.9  | 1,366       | 1,320      | 46           | 3.4  |
| Custer                               | 2,533       | 2,471      | 62           | 2.4  | 2,380       | 2,315      | 65           | 2.7  |
| Delta                                | 13,460      | 13,039     | 421          | 3.1  | 13,376      | 12,946     | 430          | 3.2  |
| Denver                               | 440,351     | 427,369    | 12,982       | 2.9  | 436,137     | 424,186    | 11,951       | 2.7  |
| Dolores                              | 1,206       | 1,166      | 40           | 3.3  | 1,133       | 1,103      | 30           | 2.6  |
| Douglas                              | 210,136     | 204,711    | 5,425        | 2.6  | 207,818     | 203,180    | 4,638        | 2.2  |
| Eagle                                | 33,371      | 32,331     | 1,040        | 3.1  | 32,062      | 31,108     | 954          | 3.0  |
| El Paso                              | 366,119     | 355,411    | 10,708       | 2.9  | 358,040     | 347,728    | 10,312       | 2.9  |
| Elbert                               | 16,176      | 15,797     | 379          | 2.3  | 15,988      | 15,635     | 353          | 2.2  |
| Fremont                              | 14,520      | 13,905     | 615          | 4.2  | 14,431      | 13,846     | 585          | 4.1  |
| Garfield                             | 30,309      | 29,484     | 825          | 2.7  | 29,042      | 28,206     | 836          | 2.9  |
| Gilpin                               | 3,963       | 3,862      | 101          | 2.5  | 3,931       | 3,834      | 97           | 2.5  |
| Grand                                | 8,716       | 8,479      | 237          | 2.7  | 8,398       | 8,178      | 220          | 2.6  |
| Gunnison                             | 11,539      | 11,196     | 343          | 3.0  | 10,842      | 10,550     | 292          | 2.7  |
| Hinsdale                             | 460         | 451        | 9            | 2.0  | 432         | 421        | 11           | 2.5  |
| Huerfano                             | 2,451       | 2,326      | 125          | 5.1  | 2,417       | 2,304      | 113          | 4.7  |
| Jackson                              | 1,060       | 1,042      | 18           | 1.7  | 970         | 949        | 21           | 2.2  |
| Jefferson                            | 345,965     | 337,036    | 8,929        | 2.6  | 343,059     | 334,499    | 8,560        | 2.5  |
| Kiowa                                | 902         | 886        | 16           | 1.8  | 878         | 864        | 14           | 1.6  |
| Kit Carson                           | 4,258       | 4,185      | 73           | 1.7  | 4,037       | 3,967      | 70           | 1.7  |
| La Plata                             | 32,139      | 31,348     | 791          | 2.5  | 30,548      | 29,742     | 806          | 2.6  |
| Lake                                 | 4,895       | 4,767      | 128          | 2.6  | 4,542       | 4,427      | 115          | 2.5  |
| Larimer                              | 218,302     | 213,010    | 5,292        | 2.4  | 211,467     | 206,334    | 5,133        | 2.4  |
| Las Animas                           | 6,098       | 5,813      | 285          | 4.7  | 6,112       | 5,868      | 244          | 4.0  |
| Lincoln                              | 2,240       | 2,182      | 58           | 2.6  | 2,222       | 2,167      | 55           | 2.5  |
| Logan                                | 10,319      | 10,082     | 237          | 2.3  | 10,175      | 9,922      | 253          | 2.5  |
| Mesa                                 | 77,327      | 75,058     | 2,269        | 2.9  | 76,886      | 74,649     | 2,237        | 2.9  |
| Mineral                              | 451         | 441        | 10           | 2.2  | 403         | 391        | 12           | 3.0  |
| Moffat                               | 6,907       | 6,707      | 200          | 2.9  | 6,728       | 6,550      | 178          | 2.6  |
| Montezuma                            | 12,672      | 12,265     | 407          | 3.2  | 12,393      | 11,991     | 402          | 3.2  |
| Montrose                             | 21,647      | 21,036     | 611          | 2.8  | 21,161      | 20,519     | 642          | 3.0  |
| Morgan                               | 15,861      | 15,435     | 426          | 2.7  | 15,398      | 14,927     | 471          | 3.1  |
| Otero                                | 7,949       | 7,653      | 296          | 3.7  | 7,791       | 7,500      | 291          | 3.7  |
| Ouray                                | 2,435       | 2,359      | 76           | 3.1  | 2,457       | 2,377      | 80           | 3.3  |
| Park                                 | 11,738      | 11,434     | 304          | 2.6  | 11,603      | 11,337     | 266          | 2.3  |
| Phillips                             | 2,470       | 2,426      | 44           | 1.8  | 2,363       | 2,317      | 46           | 1.9  |
| Pitkin                               | 10,587      | 10,072     | 515          | 4.9  | 10,100      | 9,646      | 454          | 4.5  |
| Prowers                              | 6,358       | 6,201      | 157          | 2.5  | 6,068       | 5,906      | 162          | 2.7  |
| Pueblo                               | 76,525      | 73,542     | 2,983        | 3.9  | 76,550      | 73,547     | 3,003        | 3.9  |
| Rio Blanco                           | 2,952       | 2,873      | 79           | 2.7  | 2,838       | 2,741      | 97           | 3.4  |
| Rio Grande                           | 5,416       | 5,264      | 152          | 2.8  | 5,268       | 5,082      | 186          | 3.5  |
| Routt                                | 15,290      | 14,881     | 409          | 2.7  | 14,568      | 14,165     | 403          | 2.8  |
| Saguache                             | 3,518       | 3,416      | 102          | 2.9  | 3,389       | 3,284      | 105          | 3.1  |
| San Juan                             | 511         | 497        | 14           | 2.7  | 502         | 489        | 13           | 2.6  |
| San Miguel                           | 4,986       | 4,667      | 319          | 6.4  | 4,602       | 4,348      | 254          | 5.5  |
| Sedgwick                             | 1,028       | 999        | 29           | 2.8  | 1,063       | 1,039      | 24           | 2.3  |
| Summit                               | 20,544      | 20,043     | 501          | 2.4  | 19,653      | 19,195     | 458          | 2.3  |
| Teller                               | 13,661      | 13,302     | 359          | 2.6  | 13,390      | 13,023     | 367          | 2.7  |
| Washington                           | 2,846       | 2,792      | 54           | 1.9  | 2,762       | 2,700      | 62           | 2.2  |
| Weld                                 | 171,556     | 166,660    | 4,896        | 2.9  | 168,854     | 163,993    | 4,861        | 2.9  |
| Yuma                                 | 5,769       | 5,677      | 92           | 1.6  | 5,584       | 5,480      | 104          | 1.9  |

All estimates made in cooperation with the U.S. Department of Labor, Bureau of Labor Statistics and adjusted to Current Population Survey data.

Estimates have been revised to incorporate population data from the American Community Survey.

Colorado Department of Labor and Employment 2023

| Not Seasonally Adjusted Labor Force |             |          |            |      |             |            |            |      |
|-------------------------------------|-------------|----------|------------|------|-------------|------------|------------|------|
|                                     | May 2023    |          |            |      | April 2023  |            |            |      |
| <b>Select Cities in Colorado</b>    | Labor Force | Employed | Unemployed | Rate | Labor Force | Employment | Unemployed | Rate |
| Arvada                              | 71,608      | 69,745   | 1,863      | 2.6  | 71,300      | 69,662     | 1,638      | 2.3  |
| Aurora                              | 211,534     | 205,226  | 6,308      | 3.0  | 210,487     | 204,963    | 5,524      | 2.6  |
| Boulder                             | 68,743      | 66,928   | 1,815      | 2.6  | 68,158      | 66,763     | 1,395      | 2.0  |
| Brighton                            | 20,982      | 20,286   | 696        | 3.3  | 20,842      | 20,233     | 609        | 2.9  |
| Castle Rock                         | 39,717      | 38,698   | 1,019      | 2.6  | 39,511      | 38,641     | 870        | 2.2  |
| Centennial                          | 65,570      | 63,896   | 1,674      | 2.6  | 65,281      | 63,823     | 1,458      | 2.2  |
| Colorado Springs                    | 253,960     | 246,766  | 7,194      | 2.8  | 251,653     | 245,322    | 6,331      | 2.5  |
| Commerce City                       | 31,271      | 30,240   | 1,031      | 3.3  | 31,122      | 30,168     | 954        | 3.1  |
| Englewood                           | 22,036      | 21,433   | 603        | 2.7  | 21,965      | 21,408     | 557        | 2.5  |
| Erie                                | 18,882      | 18,414   | 468        | 2.5  | 18,701      | 18,309     | 392        | 2.1  |
| Fort Collins                        | 105,845     | 103,280  | 2,565      | 2.4  | 103,099     | 100,965    | 2,134      | 2.1  |
| Fountain                            | 13,877      | 13,458   | 419        | 3.0  | 13,739      | 13,380     | 359        | 2.6  |
| Grand Junction                      | 31,196      | 30,255   | 941        | 3.0  | 30,916      | 30,077     | 839        | 2.7  |
| Greeley                             | 52,709      | 51,030   | 1,679      | 3.2  | 52,034      | 50,603     | 1,431      | 2.8  |
| Lafayette                           | 18,315      | 17,870   | 445        | 2.4  | 18,219      | 17,826     | 393        | 2.2  |
| Lakewood                            | 90,282      | 87,754   | 2,528      | 2.8  | 89,905      | 87,653     | 2,252      | 2.5  |
| Littleton                           | 25,989      | 25,321   | 668        | 2.6  | 25,878      | 25,292     | 586        | 2.3  |
| Longmont                            | 57,893      | 56,399   | 1,494      | 2.6  | 57,537      | 56,257     | 1,280      | 2.2  |
| Loveland                            | 48,295      | 47,109   | 1,186      | 2.5  | 47,109      | 46,053     | 1,056      | 2.2  |
| Northglenn                          | 21,895      | 21,219   | 676        | 3.1  | 21,748      | 21,168     | 580        | 2.7  |
| Parker                              | 35,181      | 34,331   | 850        | 2.4  | 35,022      | 34,282     | 740        | 2.1  |
| Pueblo                              | 48,734      | 46,684   | 2,050      | 4.2  | 48,322      | 46,424     | 1,898      | 3.9  |
| Thornton                            | 84,708      | 82,344   | 2,364      | 2.8  | 84,212      | 82,148     | 2,064      | 2.5  |
| Westminster                         | 68,622      | 66,717   | 1,905      | 2.8  | 68,289      | 66,592     | 1,697      | 2.5  |
| Wheat Ridge                         | 17,765      | 17,244   | 521        | 2.9  | 17,688      | 17,224     | 464        | 2.6  |
| Windsor                             | 15,913      | 15,456   | 457        | 2.9  | 15,641      | 15,279     | 362        | 2.3  |

|                                  | May 2023    |          |            |      | May 2022    |            |            |      |
|----------------------------------|-------------|----------|------------|------|-------------|------------|------------|------|
| <b>Select Cities in Colorado</b> | Labor Force | Employed | Unemployed | Rate | Labor Force | Employment | Unemployed | Rate |
| Arvada                           | 71,608      | 69,745   | 1,863      | 2.6  | 70,982      | 69,219     | 1,763      | 2.5  |
| Aurora                           | 211,534     | 205,226  | 6,308      | 3.0  | 210,016     | 203,691    | 6,325      | 3.0  |
| Boulder                          | 68,743      | 66,928   | 1,815      | 2.6  | 67,483      | 66,009     | 1,474      | 2.2  |
| Brighton                         | 20,982      | 20,286   | 696        | 3.3  | 20,767      | 20,121     | 646        | 3.1  |
| Castle Rock                      | 39,717      | 38,698   | 1,019      | 2.6  | 39,357      | 38,408     | 949        | 2.4  |
| Centennial                       | 65,570      | 63,896   | 1,674      | 2.6  | 64,839      | 63,421     | 1,418      | 2.2  |
| Colorado Springs                 | 253,960     | 246,766  | 7,194      | 2.8  | 248,307     | 241,431    | 6,876      | 2.8  |
| Commerce City                    | 31,271      | 30,240   | 1,031      | 3.3  | 30,937      | 30,004     | 933        | 3.0  |
| Englewood                        | 22,036      | 21,433   | 603        | 2.7  | 21,934      | 21,273     | 661        | 3.0  |
| Erie                             | 18,882      | 18,414   | 468        | 2.5  | 18,530      | 18,138     | 392        | 2.1  |
| Fort Collins                     | 105,845     | 103,280  | 2,565      | 2.4  | 102,377     | 100,043    | 2,334      | 2.3  |
| Fountain                         | 13,877      | 13,458   | 419        | 3.0  | 13,628      | 13,167     | 461        | 3.4  |
| Grand Junction                   | 31,196      | 30,255   | 941        | 3.0  | 30,974      | 30,090     | 884        | 2.9  |
| Greeley                          | 52,709      | 51,030   | 1,679      | 3.2  | 51,832      | 50,213     | 1,619      | 3.1  |
| Lafayette                        | 18,315      | 17,870   | 445        | 2.4  | 17,993      | 17,625     | 368        | 2.0  |
| Lakewood                         | 90,282      | 87,754   | 2,528      | 2.8  | 89,599      | 87,094     | 2,505      | 2.8  |
| Littleton                        | 25,989      | 25,321   | 668        | 2.6  | 25,769      | 25,133     | 636        | 2.5  |
| Longmont                         | 57,893      | 56,399   | 1,494      | 2.6  | 57,040      | 55,624     | 1,416      | 2.5  |
| Loveland                         | 48,295      | 47,109   | 1,186      | 2.5  | 46,851      | 45,633     | 1,218      | 2.6  |
| Northglenn                       | 21,895      | 21,219   | 676        | 3.1  | 21,672      | 21,053     | 619        | 2.9  |
| Parker                           | 35,181      | 34,331   | 850        | 2.4  | 34,875      | 34,075     | 800        | 2.3  |
| Pueblo                           | 48,734      | 46,684   | 2,050      | 4.2  | 48,782      | 46,687     | 2,095      | 4.3  |
| Thornton                         | 84,708      | 82,344   | 2,364      | 2.8  | 83,945      | 81,703     | 2,242      | 2.7  |
| Westminster                      | 68,622      | 66,717   | 1,905      | 2.8  | 68,020      | 66,205     | 1,815      | 2.7  |
| Wheat Ridge                      | 17,765      | 17,244   | 521        | 2.9  | 17,665      | 17,114     | 551        | 3.1  |
| Windsor                          | 15,913      | 15,456   | 457        | 2.9  | 15,545      | 15,157     | 388        | 2.5  |

All estimates made in cooperation with the U.S. Department of Labor, Bureau of Labor Statistics and adjusted to Current Population Survey data. Estimates have been revised to incorporate population data from the American Community Survey. Colorado Department of Labor and Employment 2023

# Colorado LMI Data Overview

May 2023

| Employment                              |           |           |           |                       |        |
|-----------------------------------------|-----------|-----------|-----------|-----------------------|--------|
|                                         | May-23    | Apr-23    | May-22    | Change from previous: |        |
|                                         |           |           |           | Period                | Year   |
| Nonfarm Wage and Salary Employment (SA) | 2,900,500 | 2,896,600 | 2,870,300 | 3,900                 | 30,200 |
| Total Resident Employment (SA)          | 3,154,500 | 3,145,600 | 3,113,500 | 8,900                 | 41,000 |
|                                         | Q4 2022   | Q3 2022   | Q4 2021   |                       |        |
| UI Covered Total Employment             | 2,847,730 | 2,832,186 | 2,763,451 | 15,544                | 84,279 |
| UI Covered Private Employment           | 2,409,300 | 2,404,030 | 2,336,770 | 5,270                 | 72,530 |

| Unemployment            |         |         |         |                       |         |
|-------------------------|---------|---------|---------|-----------------------|---------|
|                         | May-23  | Apr-23  | May-22  | Change from previous: |         |
|                         |         |         |         | Period                | Year    |
| Unemployment (SA)       | 90,000  | 89,400  | 94,100  | 600                   | (4,100) |
| Percent Unemployed (SA) | 2.8%    | 2.8%    | 2.9%    | 0.0                   | (0.1)   |
|                         | Apr-23  | Mar-23  | Apr-22  |                       |         |
| Initial Claims          | 18,719  | 12,463  | 11,541  | 6,256                 | 7,178   |
| Continued Weeks Claimed | 105,244 | 209,655 | 100,960 | (104,411)             | 4,284   |

| Wages and Earnings                      |            |            |            |                       |            |
|-----------------------------------------|------------|------------|------------|-----------------------|------------|
|                                         | Q4 2022    | Q3 2022    | Q4 2021    | Change from previous: |            |
|                                         |            |            |            | Period                | Year       |
| Total Average Weekly Wage               | \$1,472    | \$1,437    | \$1,484    | \$35                  | (\$12)     |
| Private Average Weekly Wage             | \$1,495    | \$1,447    | \$1,510    | \$48                  | (\$15)     |
|                                         | May-23     | Apr-23     | May-22     |                       |            |
| Average Weekly Earnings (Construction)  | \$1,114.99 | \$1,258.71 | \$1,237.49 | (\$143.72)            | (\$122.50) |
| Average Weekly Earnings (Manufacturing) | \$1,144.27 | \$1,179.52 | \$1,058.14 | (\$35.25)             | \$86.13    |

| CO Unemployment Insurance Trust Fund |              |              |                 |                       |               |
|--------------------------------------|--------------|--------------|-----------------|-----------------------|---------------|
|                                      | Mar-23       | Feb-23       | Mar-22          | Change from previous: |               |
|                                      |              |              |                 | Period                | Year          |
| Employer Contributions               | \$3,399,864  | \$49,354,297 | \$6,959,572     | (\$45,954,434)        | (\$3,559,708) |
| Benefits Paid                        | \$59,160,965 | \$65,936,143 | \$36,403,688    | (\$6,775,178)         | \$22,757,277  |
| Average Weekly Benefit Amount        | \$560.97     | \$548.89     | \$460.12        | \$12.09               | \$100.85      |
| Duration (weeks)                     | 11.01        | 8.53         | 14.46           | 2.48                  | (3.45)        |
| Outstanding Title XII Loan Balance   | \$56,529,775 | \$4,348,974  | \$1,013,089,861 | \$52,180,802          | (956,560,085) |

| Consumer Price Index for All Urban Consumers |         |         |         |                         |      |
|----------------------------------------------|---------|---------|---------|-------------------------|------|
| Not seasonally adjusted                      | May-23  | Mar-23  | May-22  | % Change from previous: |      |
|                                              |         |         |         | Period                  | Year |
| Denver-Aurora-Lakewood                       | 319.132 | 316.566 | 303.510 | 0.8%                    | 5.1% |
| US City Average                              | 304.127 | 301.836 | 292.296 | 0.8%                    | 4.0% |

(Most current data available for all categories)