

PRESS RELEASE

Colorado Department of Labor and Employment • 633 17th Street, Suite 1200 • Denver, CO 80202 • (303) 318-8004 • Fax: (303) 318-8070

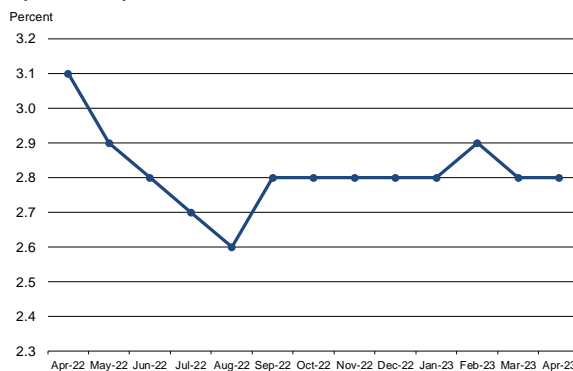
For Immediate Release

Date: May 19, 2023/ 8:00 A.M.
Contact: Office of Government, Policy and Public Relations
Email: cdle_pr@state.co.us
Web: <http://www.colmigateway.com>

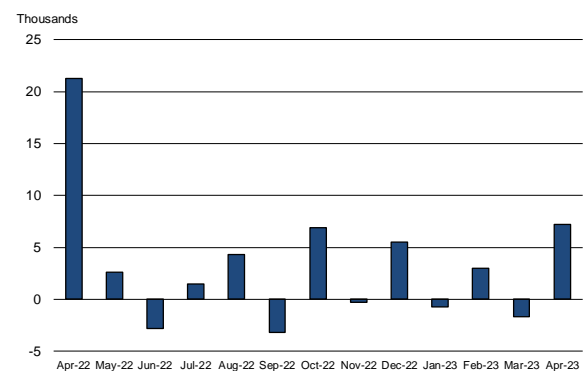
Colorado Employment Situation – April 2023

7,200 Nonfarm Payroll Jobs Added in April; Unemployment Rate Flat at 2.8 Percent

Colorado unemployment rate, seasonally adjusted
April 2022 - April 2023



Colorado nonfarm payroll employment over-the-month change, seasonally adjusted, April 2022 - April 2023



Household survey data

- According to the survey of households, Colorado's seasonally adjusted **unemployment rate** was unchanged from March to April at 2.8 percent. The **number of unemployed individuals** fell by 1,800 over the same time period to 89,300. Colorado's unemployment rate has been below 3.0 percent for twelve consecutive months and remains at pre-pandemic levels. The national unemployment rate decreased one-tenth of a percentage point to 3.4 percent from March to April.
- Colorado's **labor force** increased by 7,500 in April to 3,234,900. The share of Coloradans participating in the labor force rose to 68.6 percent in April, compared to 68.5 percent the month prior. The U.S. labor force participation rate was 62.6 percent in April and was unchanged from the month prior.
- The **number of individuals employed** in Colorado grew by 9,300 in April to 3,145,500, which represents 66.7 percent of the state's 16+ population. The employment-population ratio of 66.7 percent in April surpassed the pre-pandemic rate of 66.6 percent in February 2020. The national employment-population ratio was flat in April from the month prior at 60.4 percent.

Establishment survey data

- **Nonfarm payroll jobs** in Colorado grew by 7,200 from March to April for a total of 2,890,000 jobs, according to the survey of business establishments. Private sector payroll jobs increased by 6,500, while government added 700 jobs.
- **March estimates** were revised up to 2,882,800, and the over the month change from February to March was a loss of 1,700 rather than the originally estimated drop of 4,700 (monthly revisions are based on additional responses from businesses and government agencies since the last published estimates).
- **Private industry sectors with significant job gains** in April were: leisure and hospitality (≈4,400), professional and business services (≈3,900), and construction (≈1,800). Significant over the month private sector declines occurred in other services (≈2,100), financial activities (≈1,400), and trade, transportation, and utilities (≈1,400).
- **Since April 2022**, nonfarm payroll jobs have increased 22,300, with the private sector growing by 13,100 and government adding 9,200 jobs. The largest **private sector job gains** were in leisure and hospitality (≈17,300), professional and business services (≈12,300), and educational and health services (≈3,000). During that same period trade, transportation, and utilities (≈9,800), financial activities (≈9,300), information (≈1,700), construction (≈700), and other services (≈200) **payroll jobs declined**. Colorado's **rate of job growth** over the past year is 0.8 percent, lagging the U.S. rate of 2.6 percent.
- Over the year, the **average workweek** for all Colorado employees on private nonfarm payrolls increased from 33.3 to 33.5 hours, while **average hourly earnings** grew from \$34.24 to \$35.79, two dollars and forty-three cents more than the national average hourly earnings of \$33.36.

###

All Colorado estimates from the establishment and household surveys, including greater geographic detail, are available at: <http://www.colmigateway.com>. Estimates for all states and the nation are available at: <http://www.bls.gov>.

For data visualizations, visit public.tableau.com/app/profile/cdle.lmi.

The **May 2023 Colorado Employment Situation** will be released at 8:00 AM on Friday, June 16, 2023. The full schedule of release dates for calendar year 2023 estimates is available at <http://www.colmigateway.com>.

###

Technical Notes

This release provides information on industry employment and labor force statistics for April 2023, the most current estimates available from the Colorado Department of Labor and Employment. The reference period for the establishment and household surveys was the pay period or week that includes the 12th of the month.

The unemployment rate, labor force, labor force participation, total employment and the number of unemployed are based on a survey of households. The total employment estimate derived from this survey is intended to measure the number of people employed.

Nonfarm payroll jobs estimates are based on a survey of business establishments and government agencies, and are intended to measure the number of jobs, not the number of people employed. Other series based on this survey include private sector average weekly hours, average hourly earnings and average weekly earnings.

The business establishment survey covers about seven times the number of households surveyed and is therefore considered a more reliable indicator of economic conditions. Because the estimates are based on two separate surveys, one measuring jobs by worksite and the other measuring persons employed and unemployed by household, estimates based on these surveys may provide seemingly conflicting results.

###

Supplemental information available in following pages

APRIL 2023

EMPLOYMENT SITUATION SUPPLEMENTAL CHARTS

May 19, 2023

This briefing provides information on industry employment and labor force statistics, derived from surveys of business establishments and households. The reference period for these surveys is the pay period or week that includes the 12th of the month. The reference week for April was specifically April 9th – April 15th.

Colorado Unemployment Rate Remains Notably Lower Than U.S. Rate in April

Percent

7

6

5

4

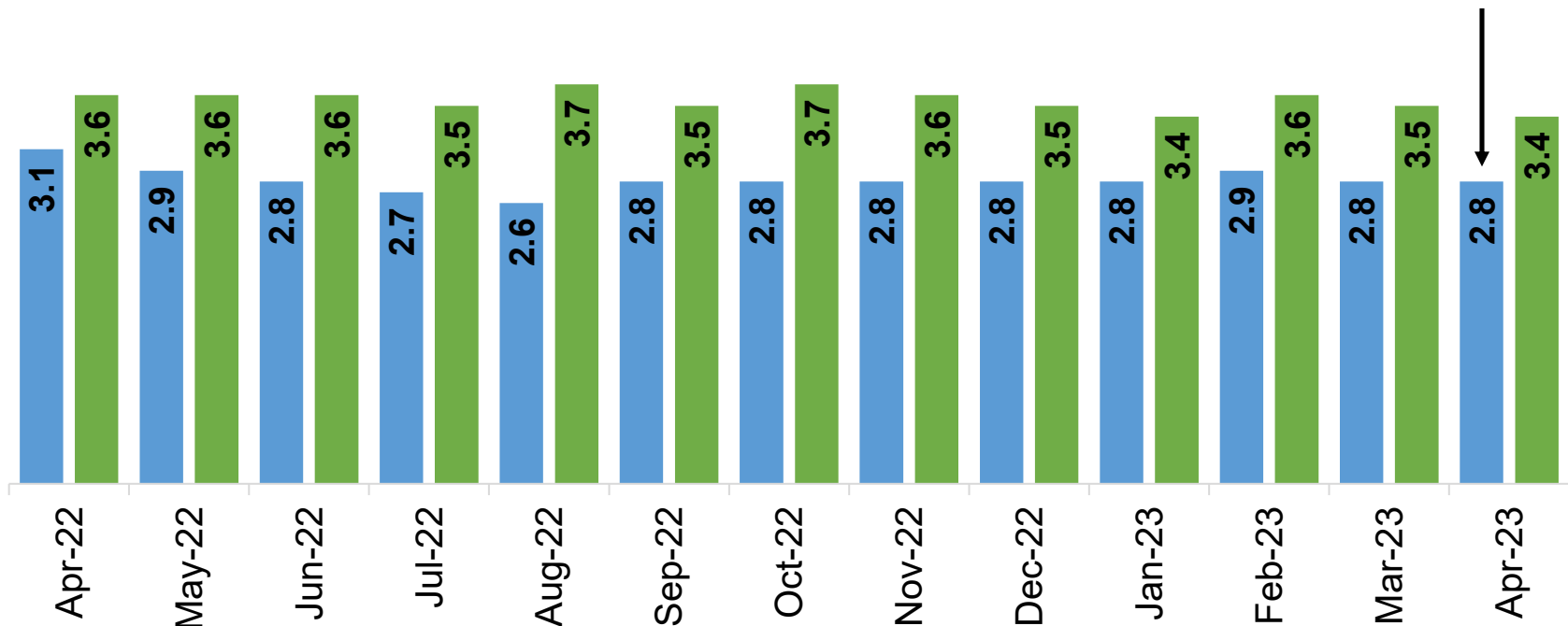
3

2

1

0

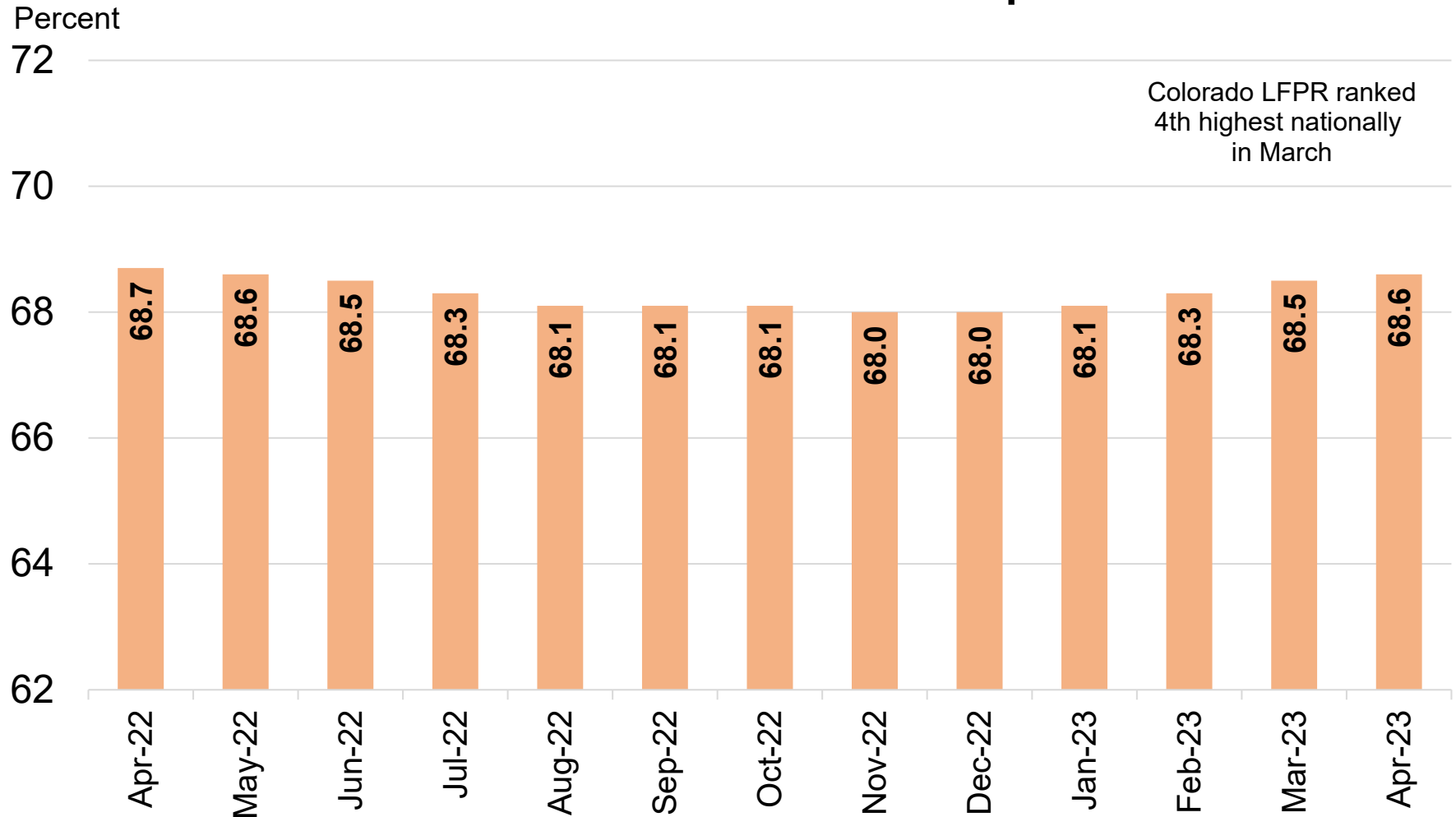
While the number of unemployed Coloradans dropped by 1,800 in April, the unemployment rate was unchanged due to rounding. The state's labor force grew by 7,500 last month and total employment increased by 9,300. Colorado's unemployment rate has been below 3.0 percent since May 2022.



Source: Colorado Department of Labor and Employment; Bureau of Labor Statistics
Data seasonally adjusted

■ Colorado ■ U.S.

Colorado's Labor Force Participation Rate Increased to 68.6 Percent in April



Source: Colorado Department of Labor and Employment; Bureau of Labor Statistics

Data seasonally adjusted. Estimates share of Colorado's 16+ population that is in the labor force in a given month.

February 2020 rate was 68.8 percent.

For further information on labor force definitions, go here: <https://www.bls.gov/lau/laufaq.htm>

Colorado's Employment-Population Ratio Surpassed February 2020 Level in April

Percent

68

Colorado EPOP ranked
4th highest nationally
in March

67

66

65

64

63

62

Apr-22

May-22

Jun-22

Jul-22

Aug-22

Sep-22

Oct-22

Nov-22

Dec-22

Jan-23

Feb-23

Mar-23

Apr-23

66.6

66.6

66.6

66.4

66.3

66.2

66.1

66.1

66.1

66.2

66.3

66.5

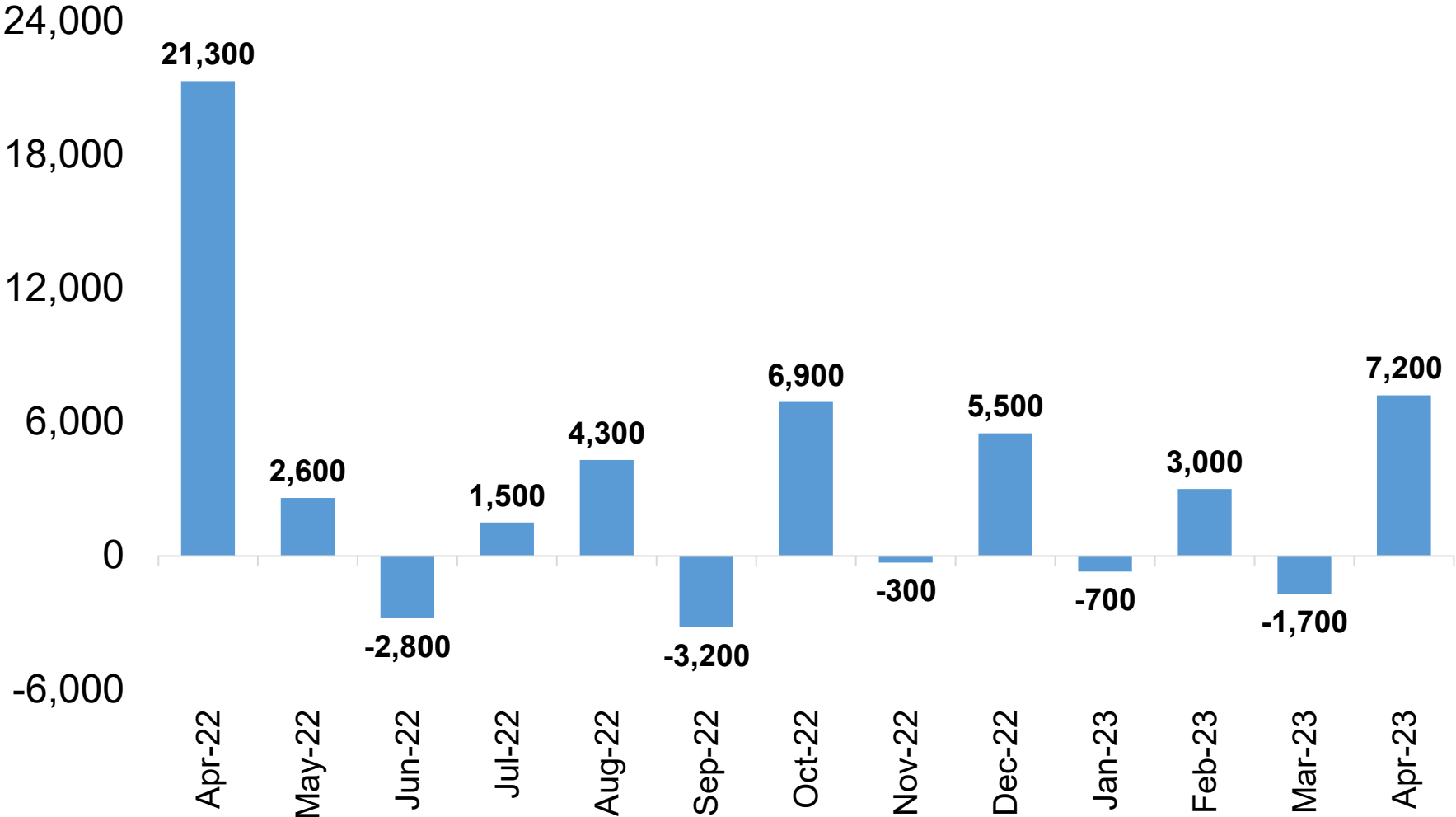
66.7

Source: Colorado Department of Labor and Employment; Bureau of Labor Statistics

Data seasonally adjusted. Estimates share of Colorado's 16+ population that is employed in a given month.

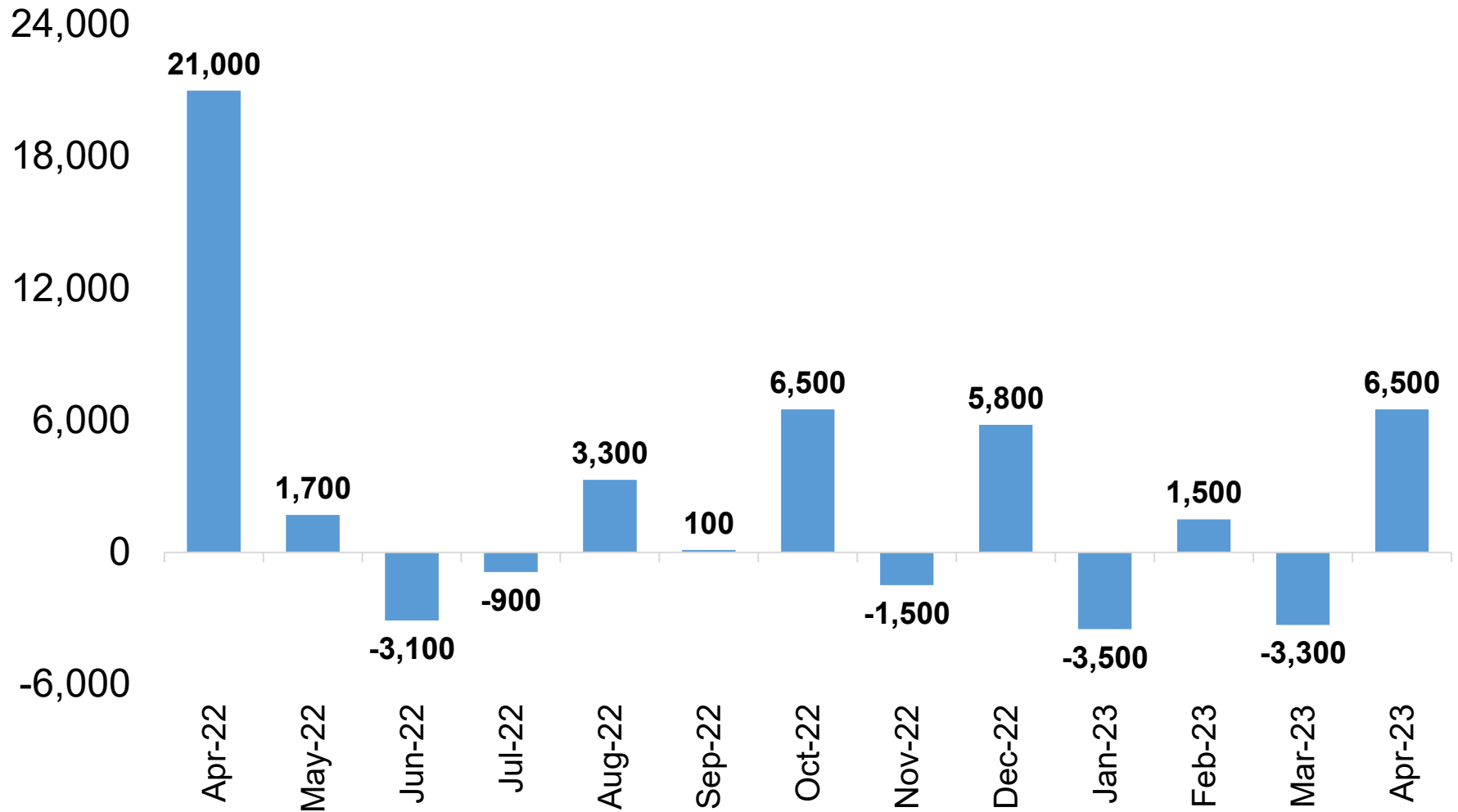
February 2020 rate was 66.6 percent.

Colorado Added 7,200 Total Nonfarm Jobs in April; March Numbers Revised Up 3,000



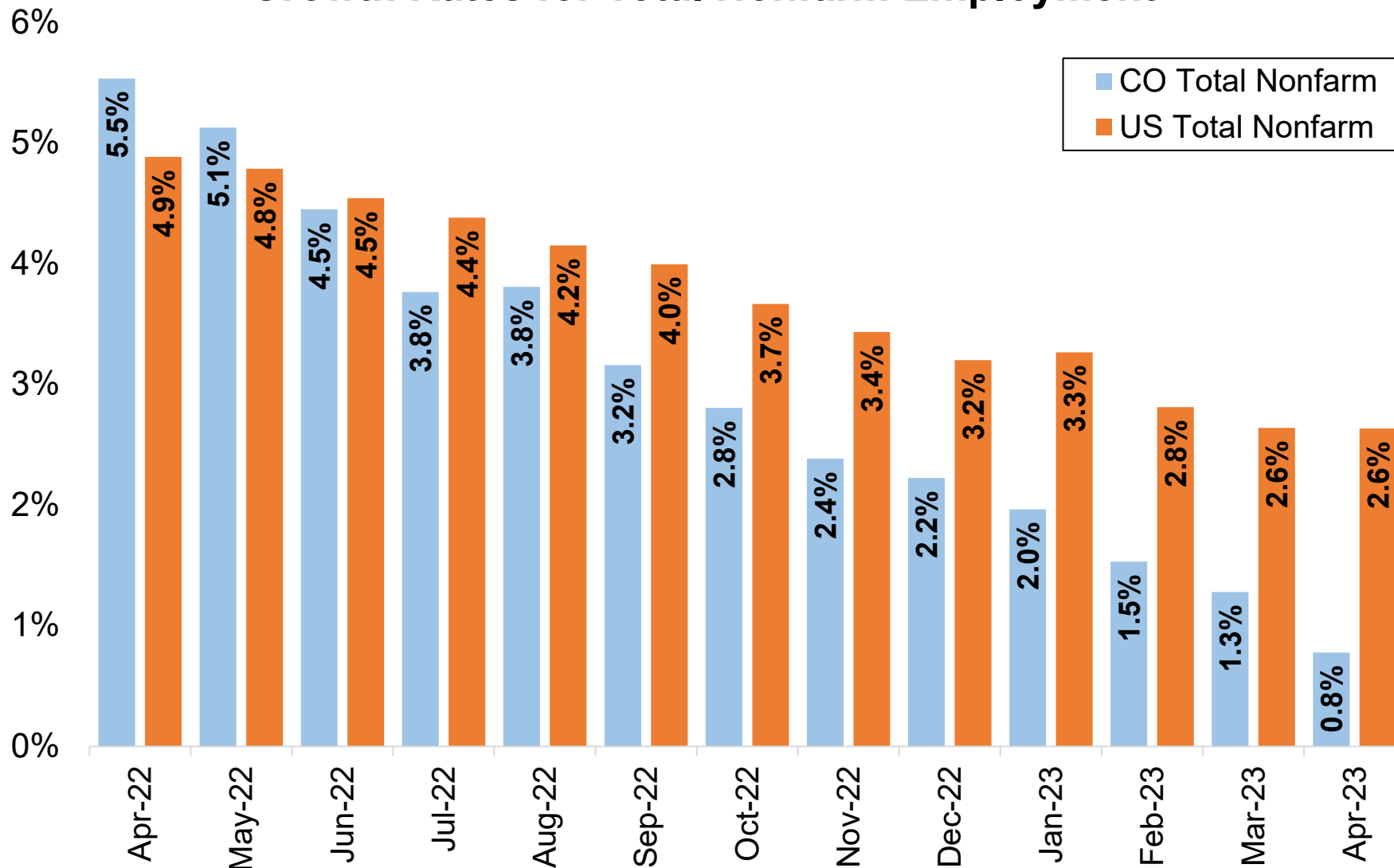
Source: Colorado Department of Labor and Employment; Bureau of Labor Statistics
Data seasonally adjusted

6,500 Private Sector Jobs Gained in April; March Figures Revised Up 2,900



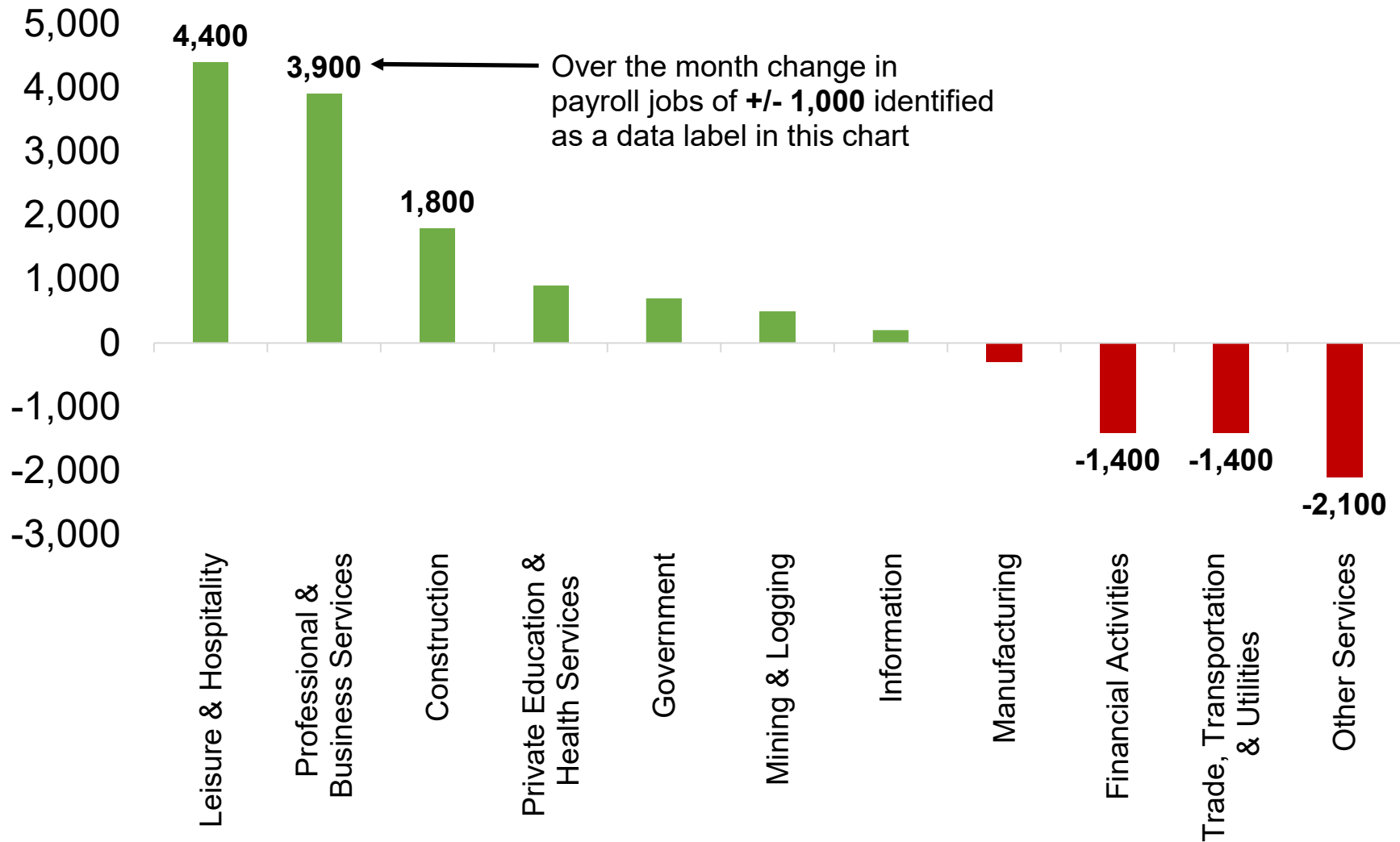
Source: Colorado Department of Labor and Employment; Bureau of Labor Statistics
Data seasonally adjusted

Colorado and U.S. Over the Year Growth Rates for Total Nonfarm Employment



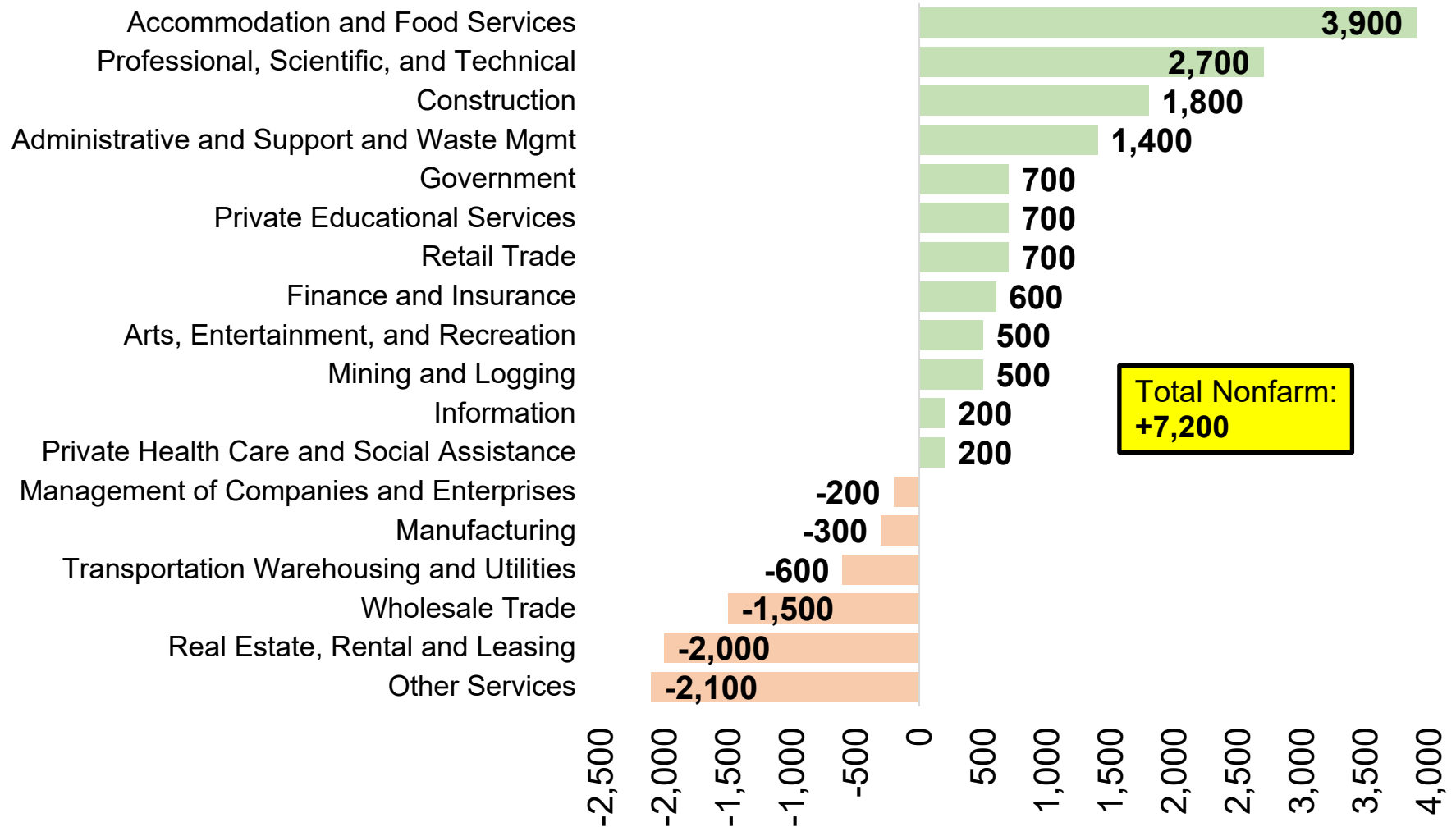
Source: Colorado Department of Labor and Employment; Bureau of Labor Statistics
Data seasonally adjusted

Mixed Industry Level Growth in April; However, More Supersectors Gained Jobs Than Lost



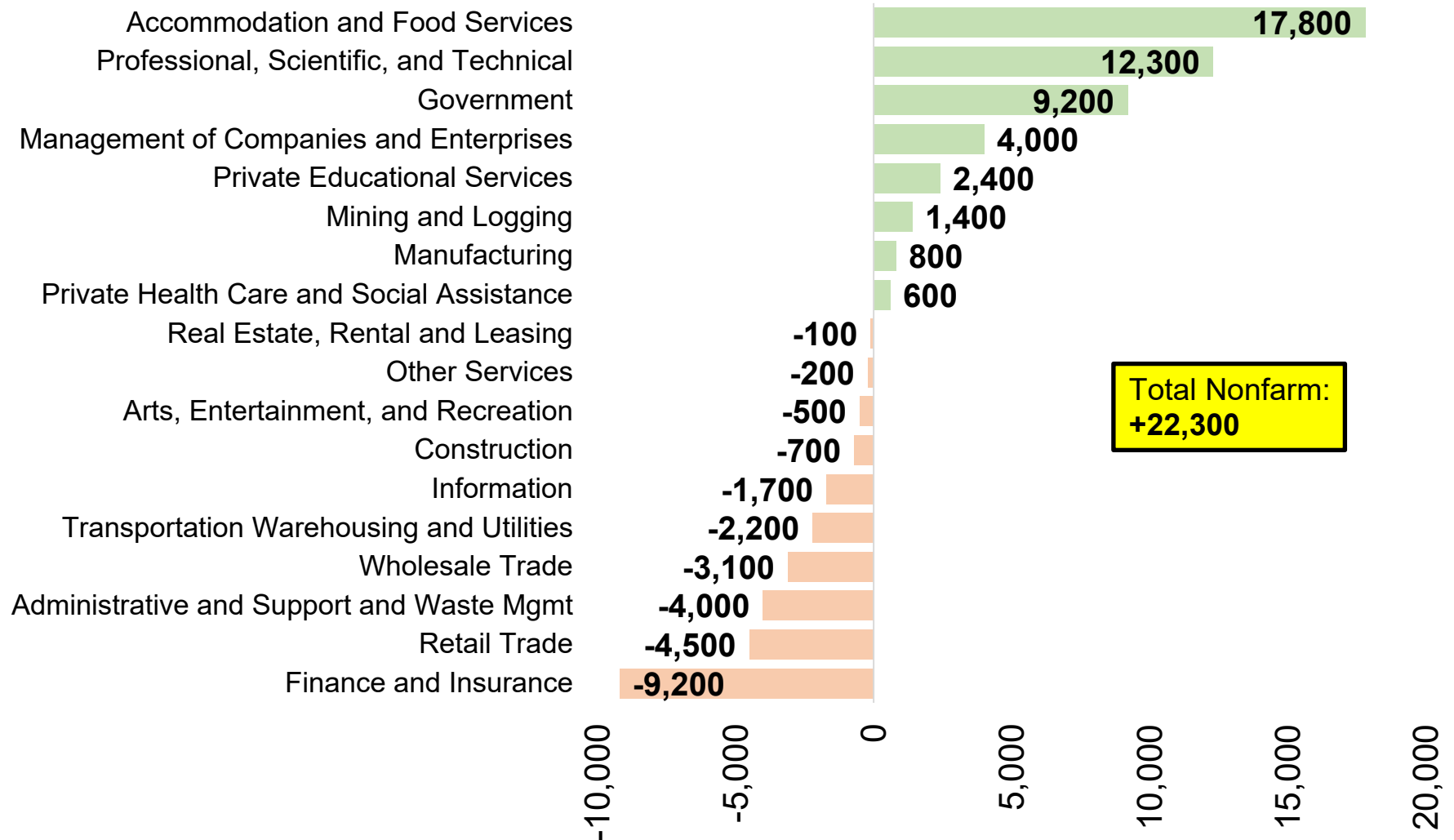
Source: Colorado Department of Labor and Employment; Bureau of Labor Statistics
Data seasonally adjusted

Change in Payroll Jobs in April 2023, by Industry Sector



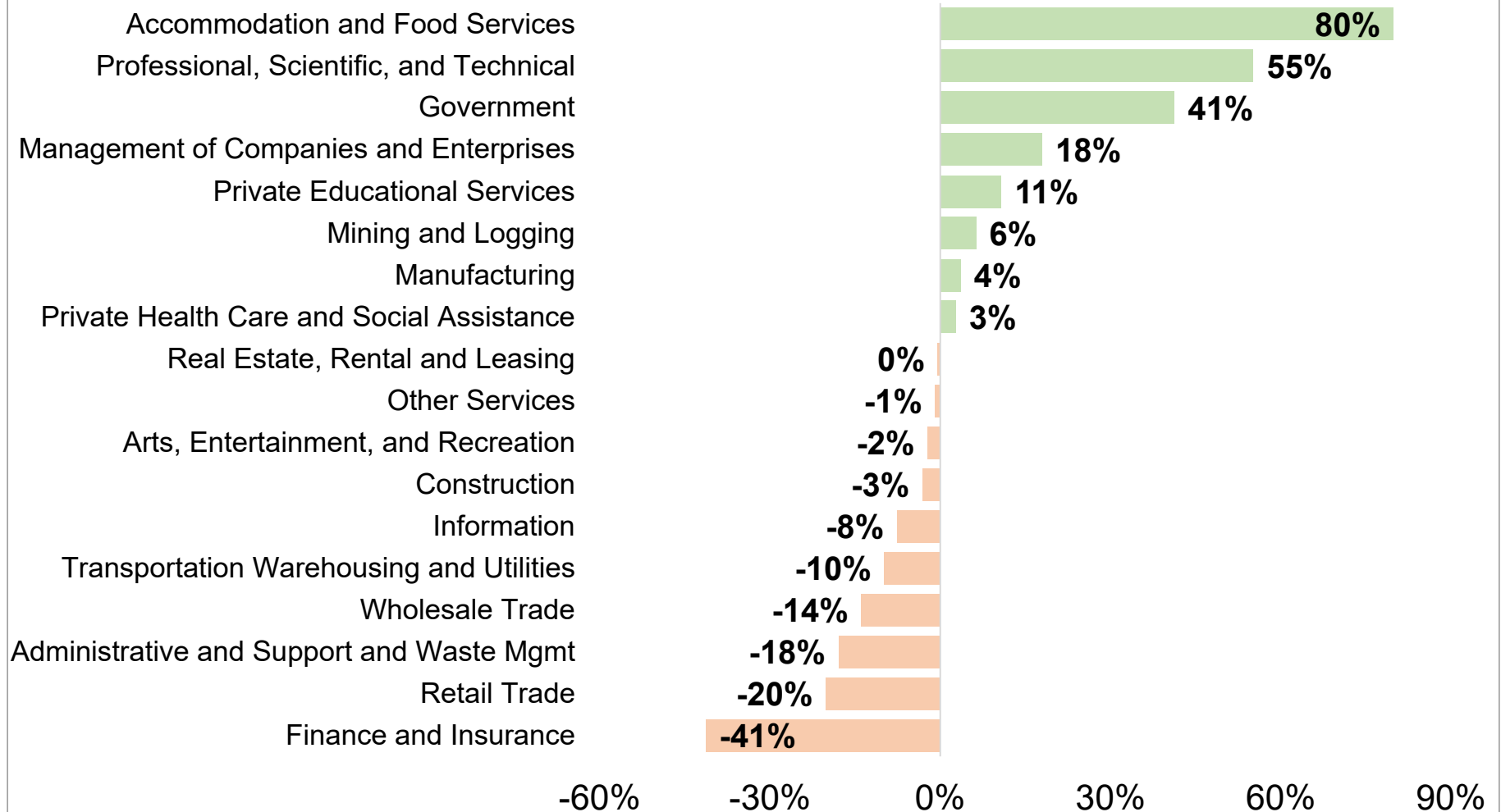
Source: Colorado Department of Labor and Employment; Bureau of Labor Statistics
Data seasonally adjusted, March 2023 to April 2023

Change in Payroll Jobs Over Past 12 Months, by Industry Sector



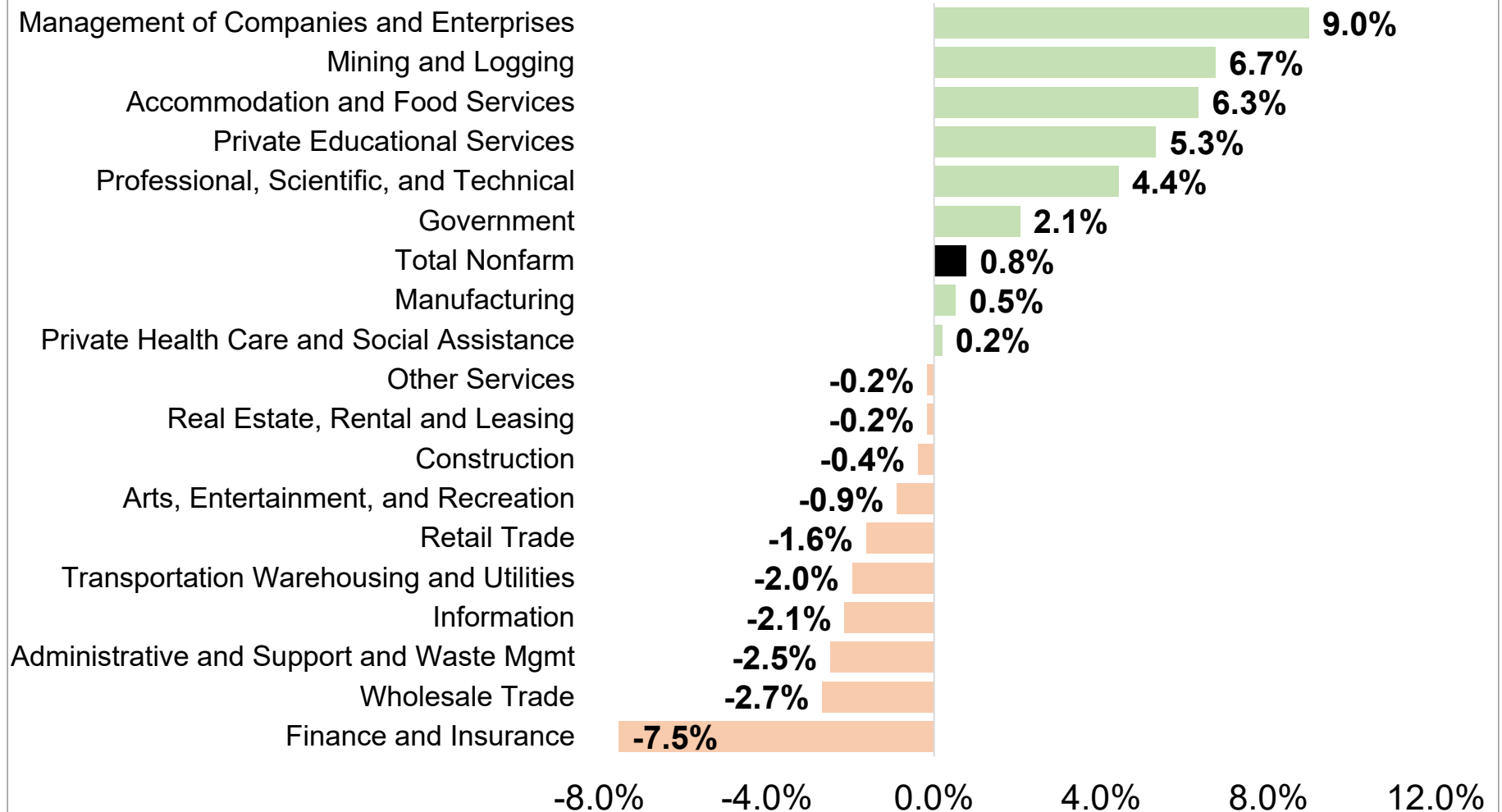
Source: Colorado Department of Labor and Employment; Bureau of Labor Statistics
Data seasonally adjusted, April 2022 to April 2023

Percent Contribution to Total Colorado Nonfarm Payroll Job Change Over Past 12 Months, by Industry Sector



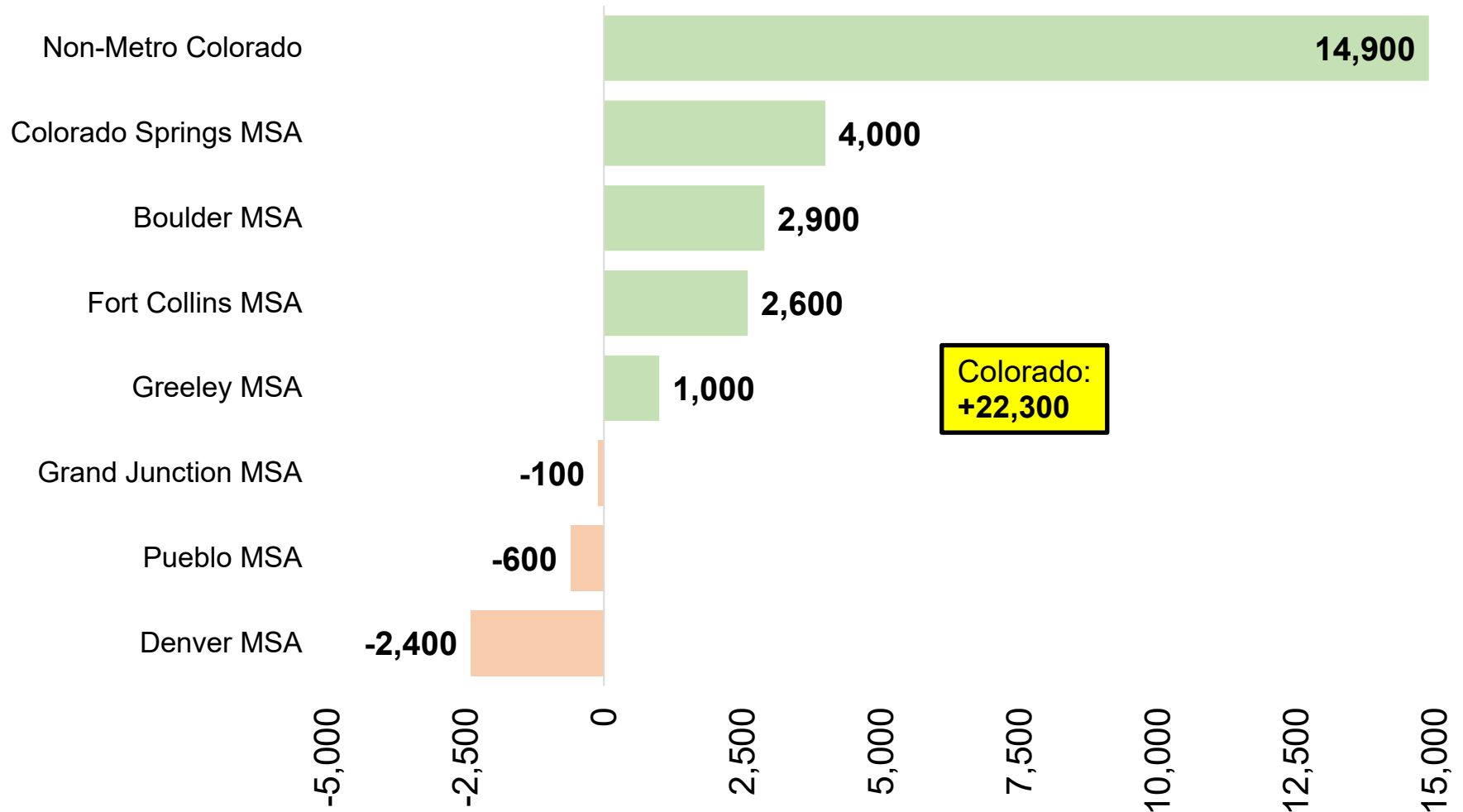
Source: Colorado Department of Labor and Employment; Bureau of Labor Statistics
 Data seasonally adjusted, April 2022 to April 2023

April 2023 Over the Year Growth Rates, by Industry Sector



Source: Colorado Department of Labor and Employment; Bureau of Labor Statistics
Data seasonally adjusted, April 2022 to April 2023

Change in Payroll Jobs Over Past 12 Months, by Colorado Substate Area

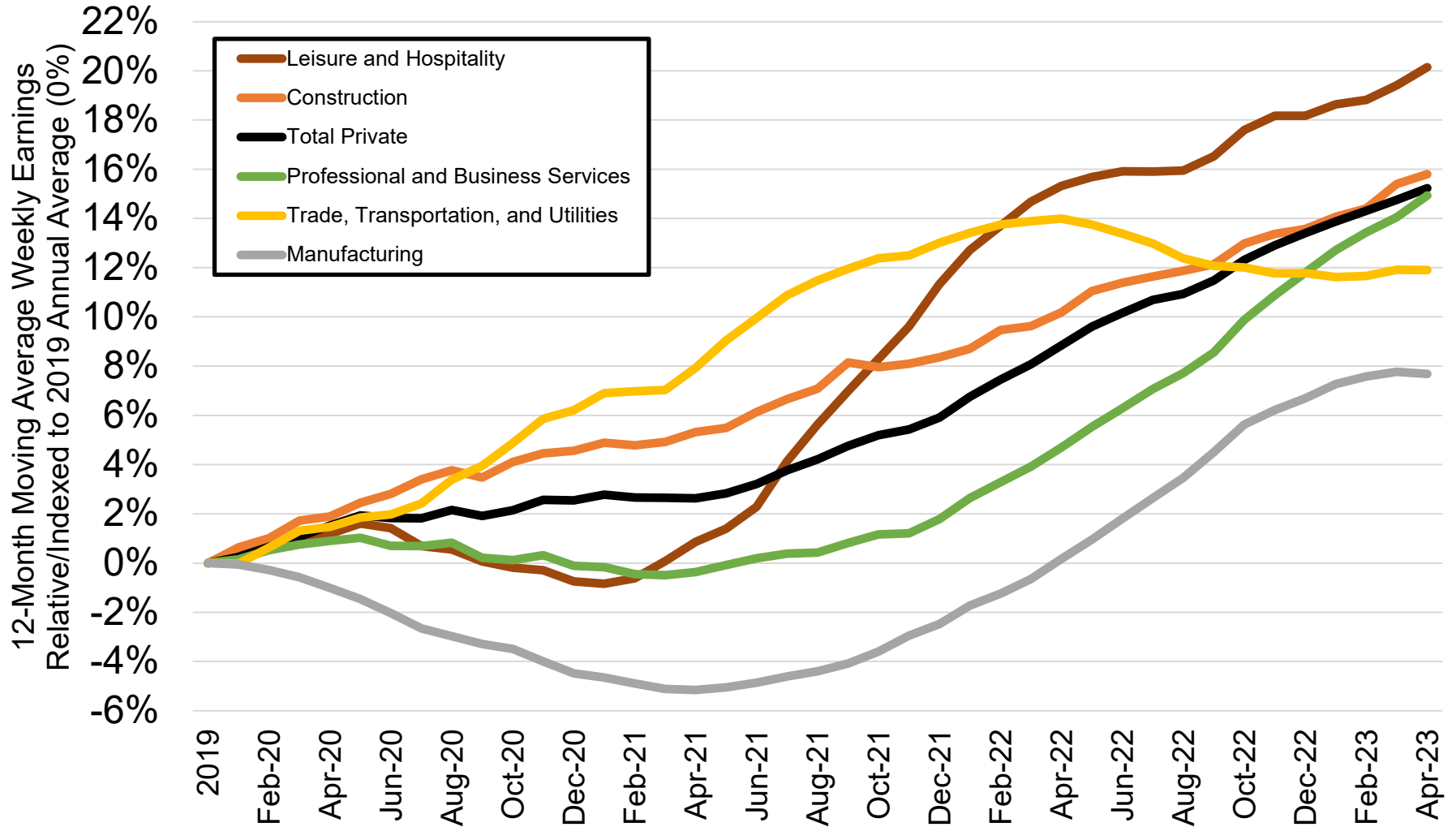


Source: Colorado Department of Labor and Employment; Bureau of Labor Statistics

Data seasonally adjusted, April 2022 to April 2023

Note: MSA = Metropolitan Statistical Area; Non-Metro Colorado = residual of state that is not an MSA (47 counties)

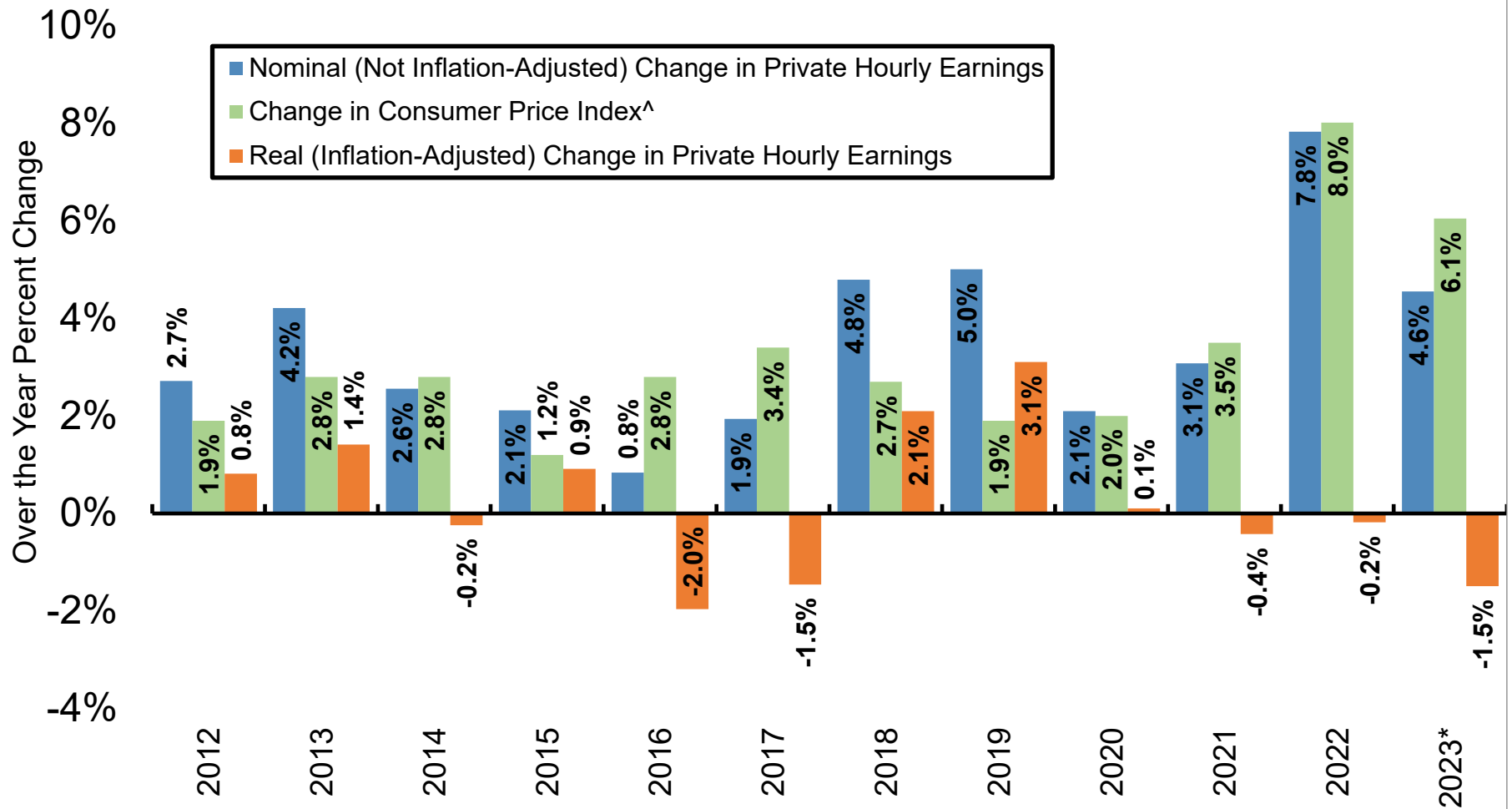
Percent Change in Average Weekly Earnings Since 2019, by Select Colorado Industry



Source: Colorado Department of Labor and Employment; Bureau of Labor Statistics

Data not seasonally adjusted. Note: each month on this chart represents a 12-month moving average and measures the percent change in average weekly earnings compared to the 2019 annual average for that industry.

Nominal and Real Percent Change in Colorado's Private Average Hourly Earnings Since 2012

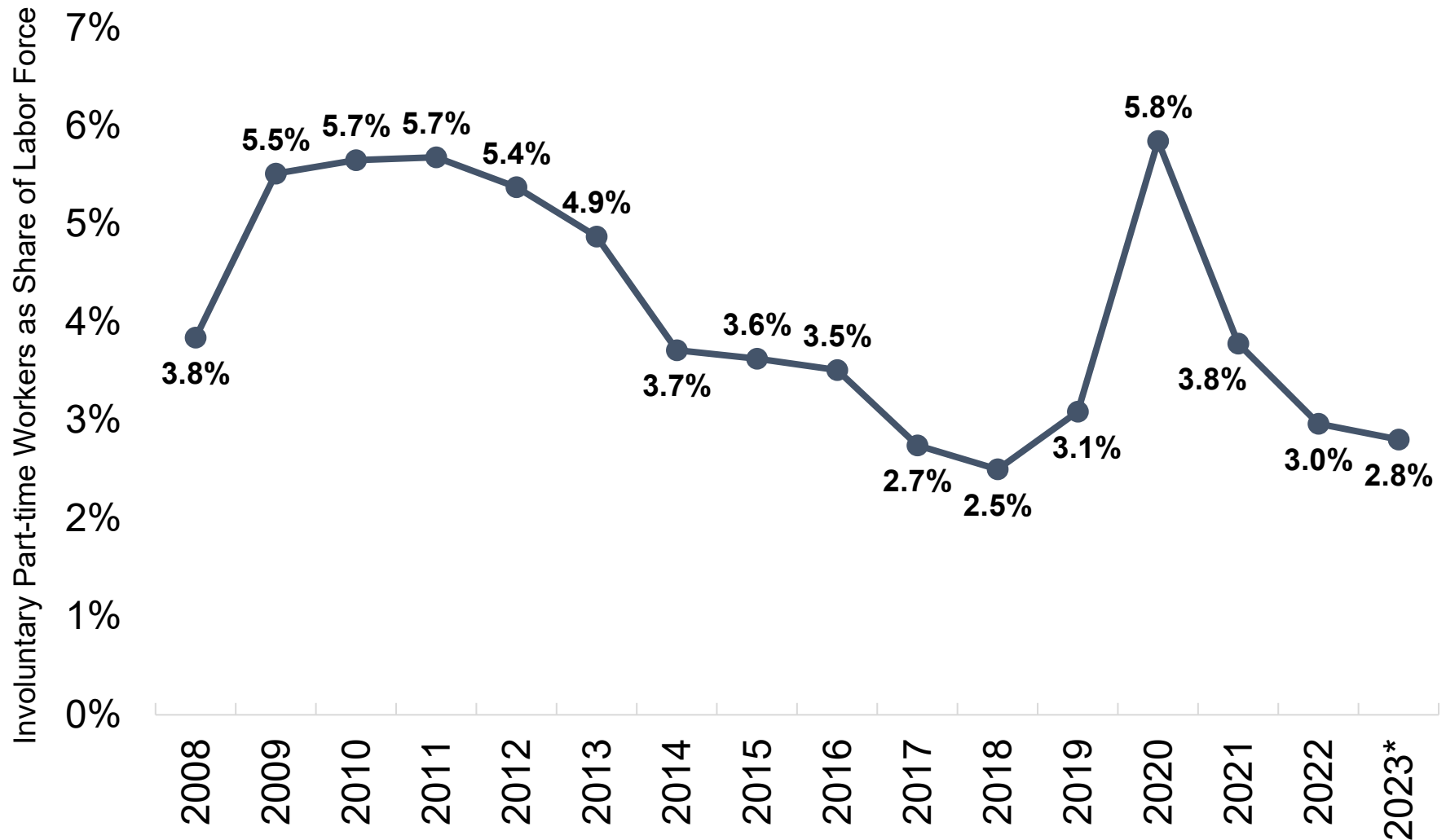


Source: Colorado Department of Labor and Employment estimates; Bureau of Labor Statistics

[^]Note: Denver-Aurora-Lakewood CPI-U estimates were utilized to adjust average hourly earnings for inflation.

That data is available here: <https://www.bls.gov/cpi/regional-resources.htm>. *2023 nominal earnings growth is measured using data for January to April compared to the same period the year prior, while real earnings were adjusted using the average over-the-year change in CPI-U for January and March 2023.

Involuntary Part-Time Workers as Share of Labor Force

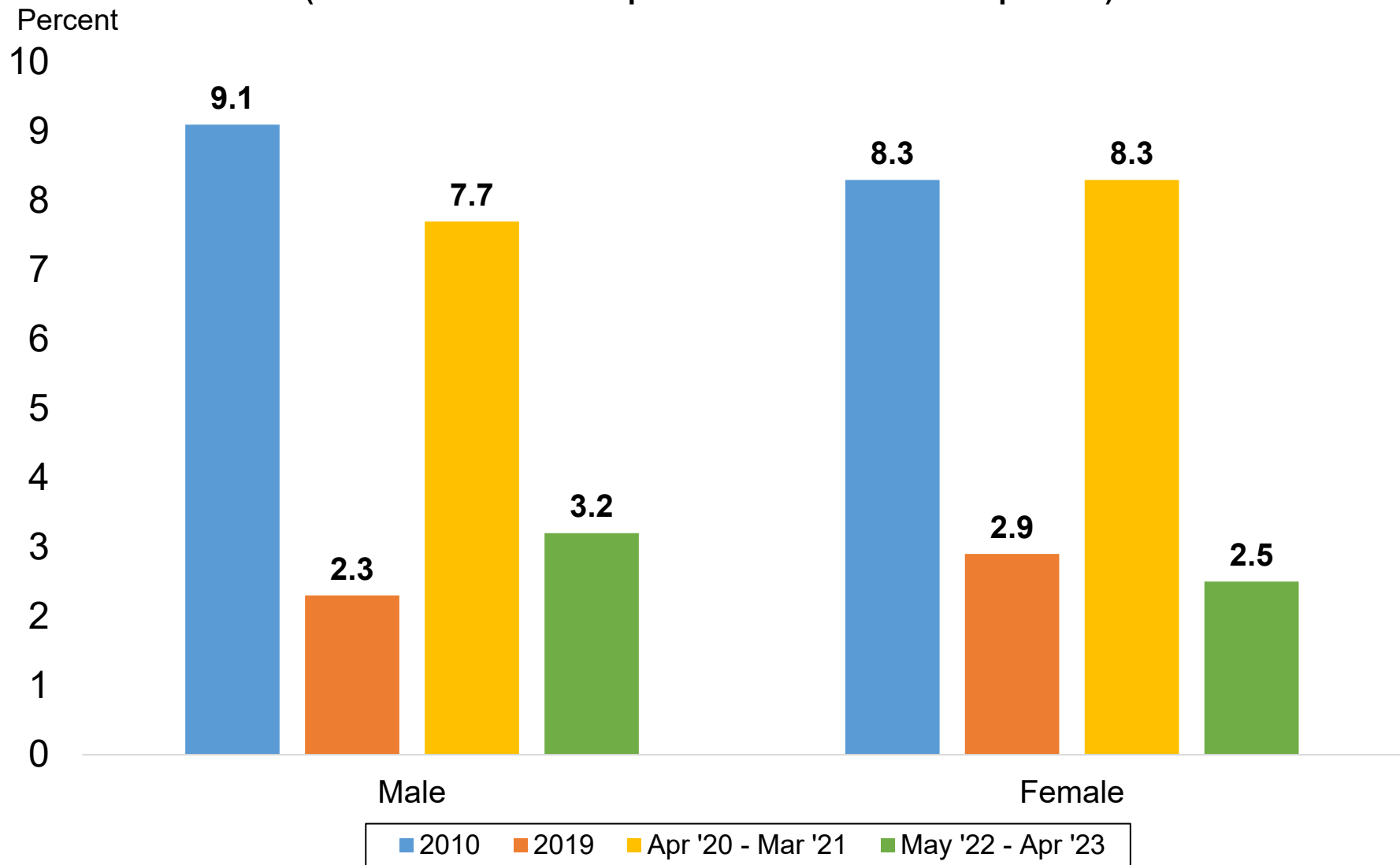


Source: Current Population Survey

Data not seasonally adjusted. Involuntary part-time workers are those individuals who are working part-time hours (34 hours or less), but prefer full-time hours (35+ hours).

*Average through the first four months of 2023.

Unemployment Rates by Gender (Most recent 12-month period available vs. select periods)

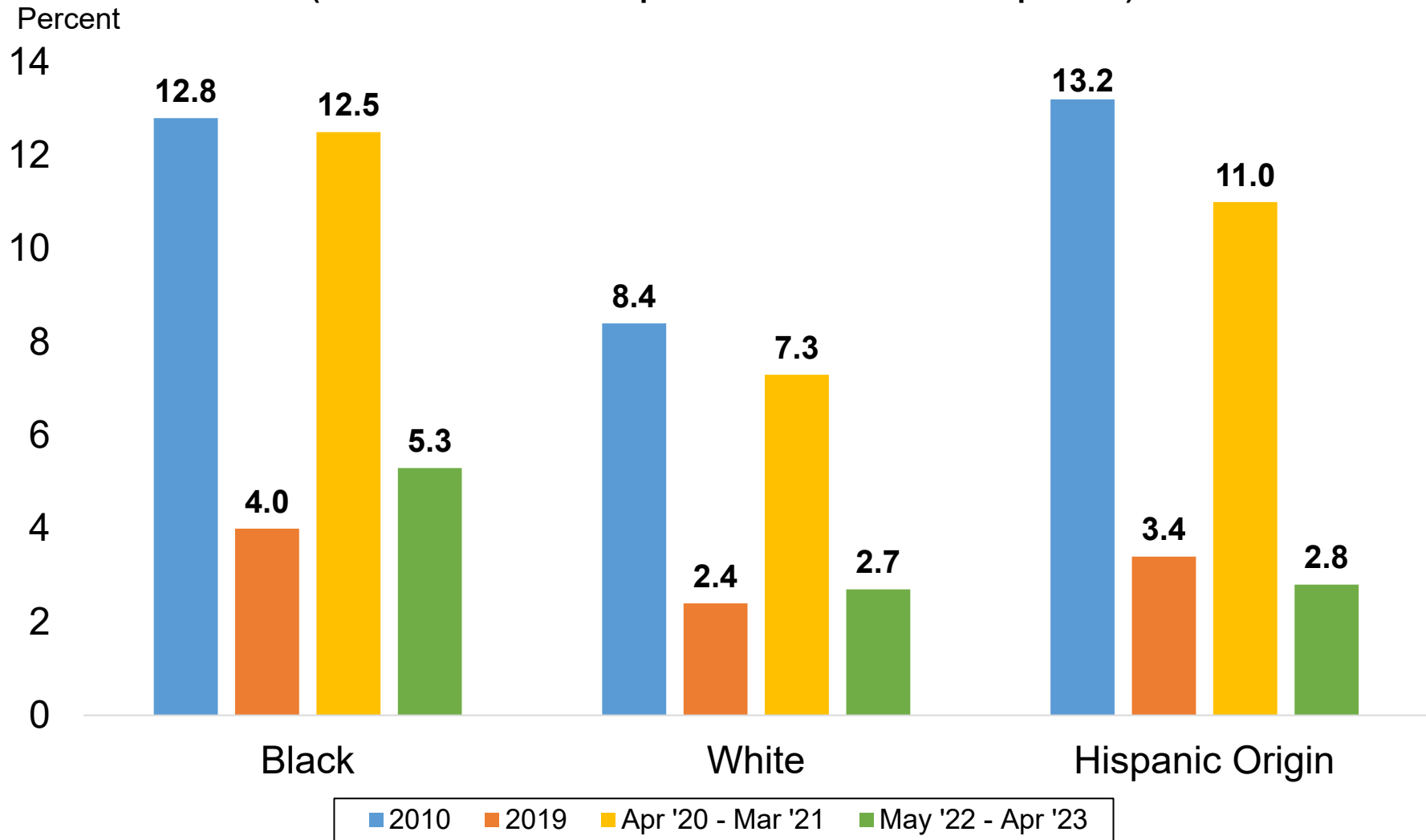


Source: Current Population Survey

Data not seasonally adjusted. Unemployment rates by gender for individuals 16 years and older.

Unemployment Rates by Race & Ethnicity

(Most recent 12-month period available vs. select periods)

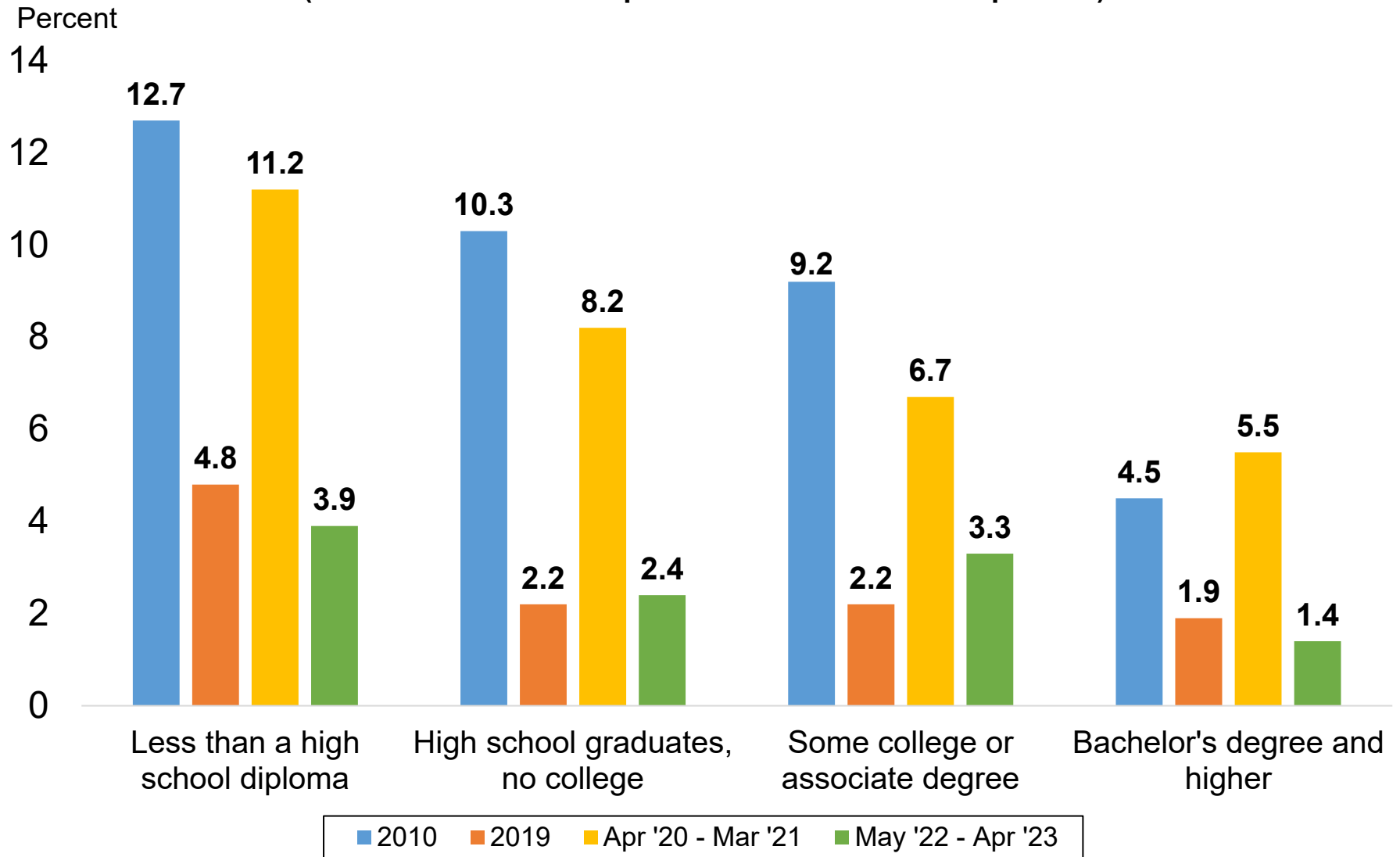


Source: Current Population Survey

Data not seasonally adjusted. Other race categories excluded due to small sample size. Hispanic origin category is not mutually exclusive (i.e. hispanic and non-hispanic ethnicities are represented in both race categories).

Unemployment Rates by Educational Attainment

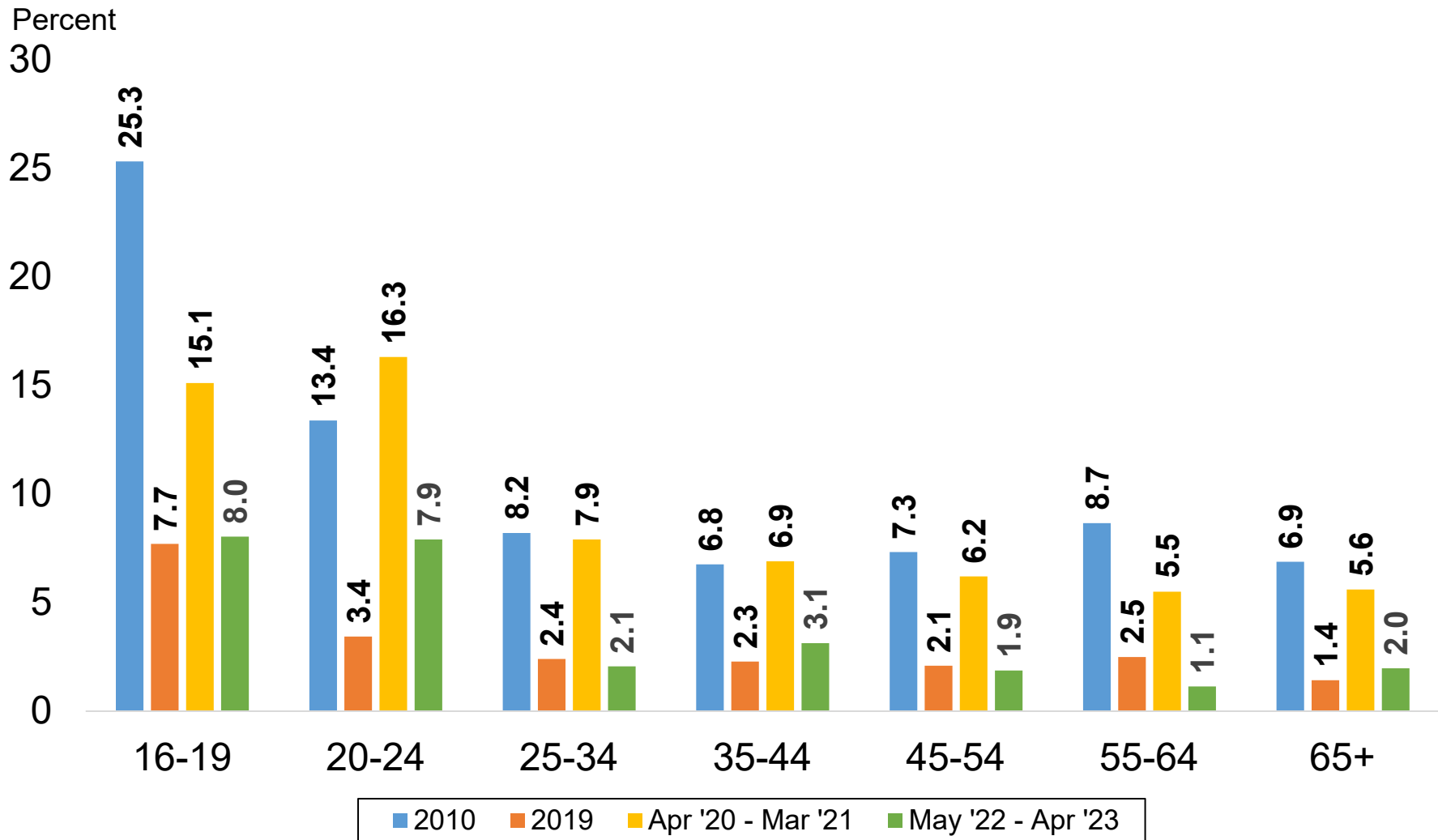
(Most recent 12-month period available vs. select periods)



Source: Current Population Survey

Data not seasonally adjusted. Unemployment rates by educational attainment for individuals 25 years and over.

Unemployment Rates by Age Group (Most recent 12-month period available vs. select periods)



Source: Current Population Survey
Data not seasonally adjusted.

Colorado Labor Force Participation Rates and Employment-Population Ratios, Ages 25 to 54

(Most recent 12-month period available vs. select years)

Percent

88

86

84

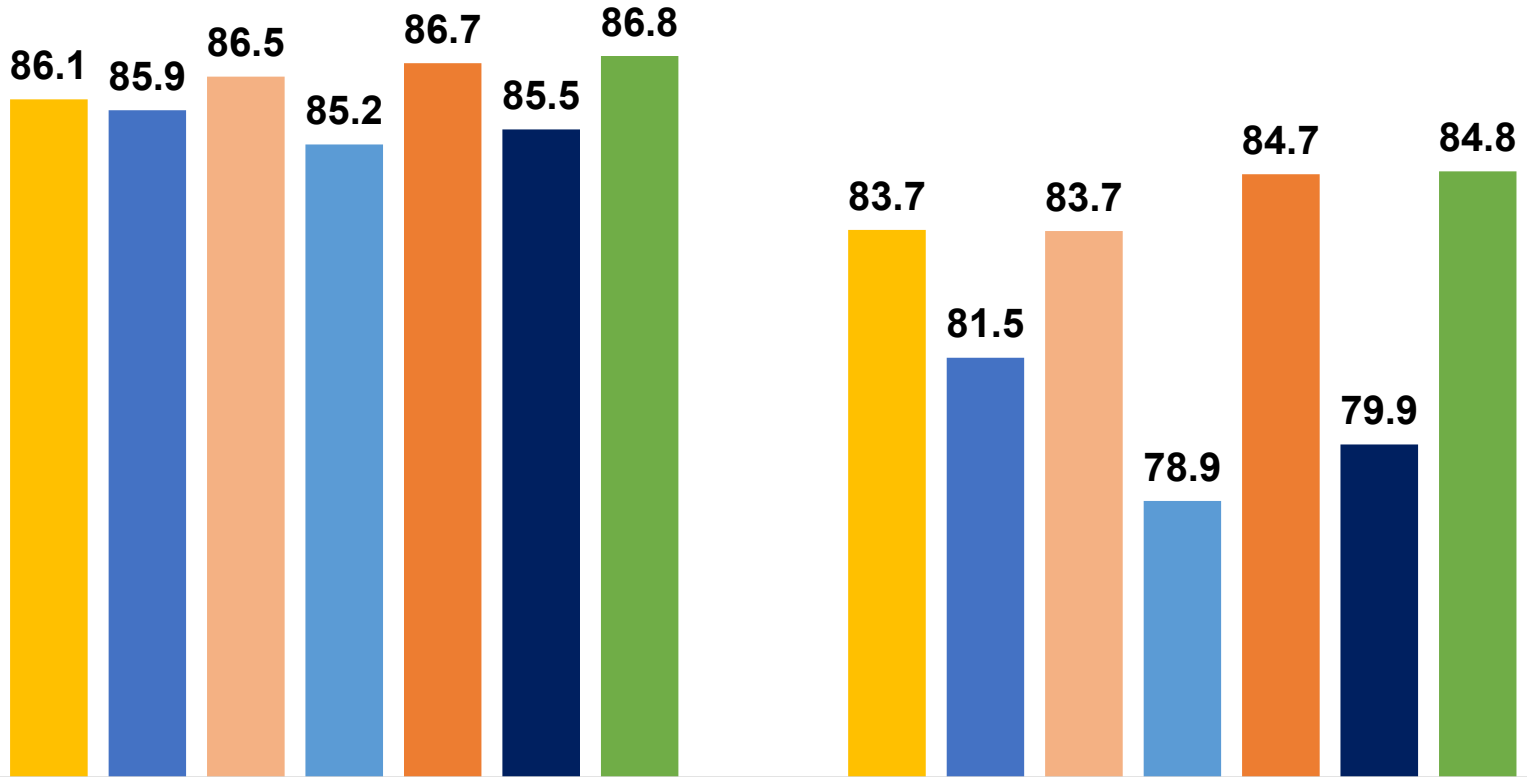
82

80

78

76

74



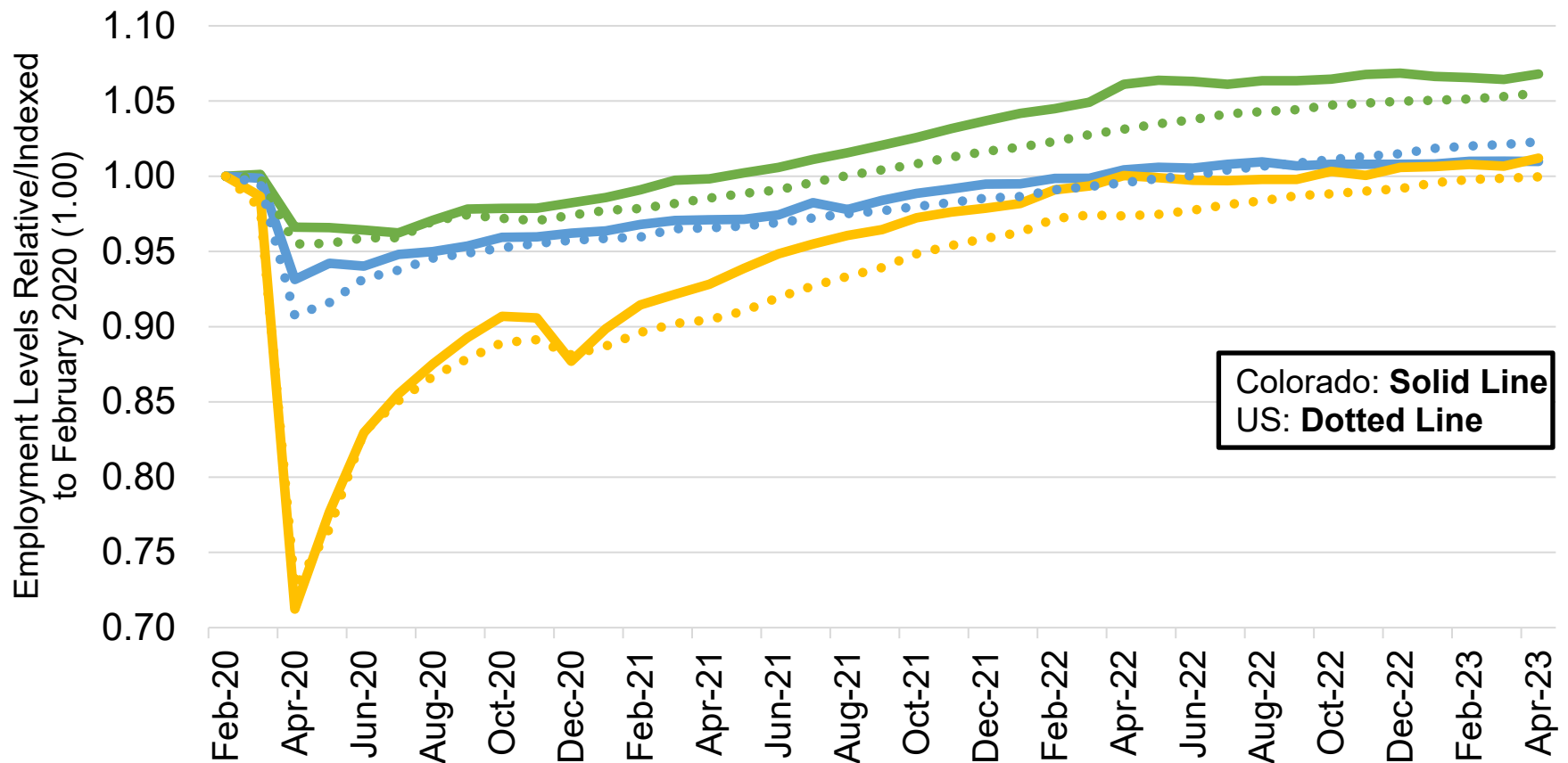
Labor Force Participation Rate

Employment-Population Ratio

■ 2001 ■ 2003 ■ 2006 ■ 2010 ■ 2019 ■ 2020 ■ May '22 - Apr '23

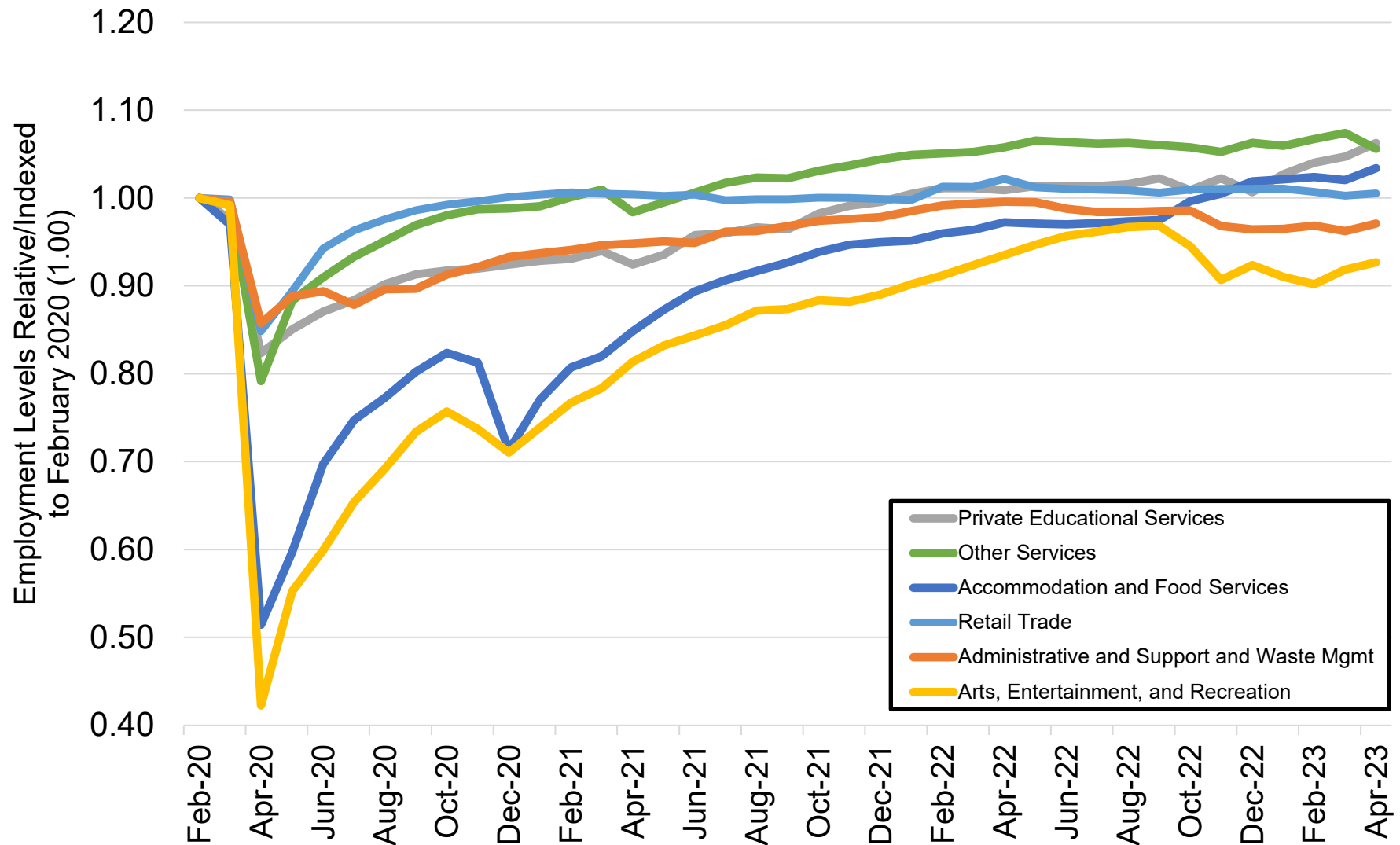
Source: Current Population Survey
Data not seasonally adjusted.

Job Loss and Recovery by Low, Medium, and High Wage Industries (Colorado & U.S.)



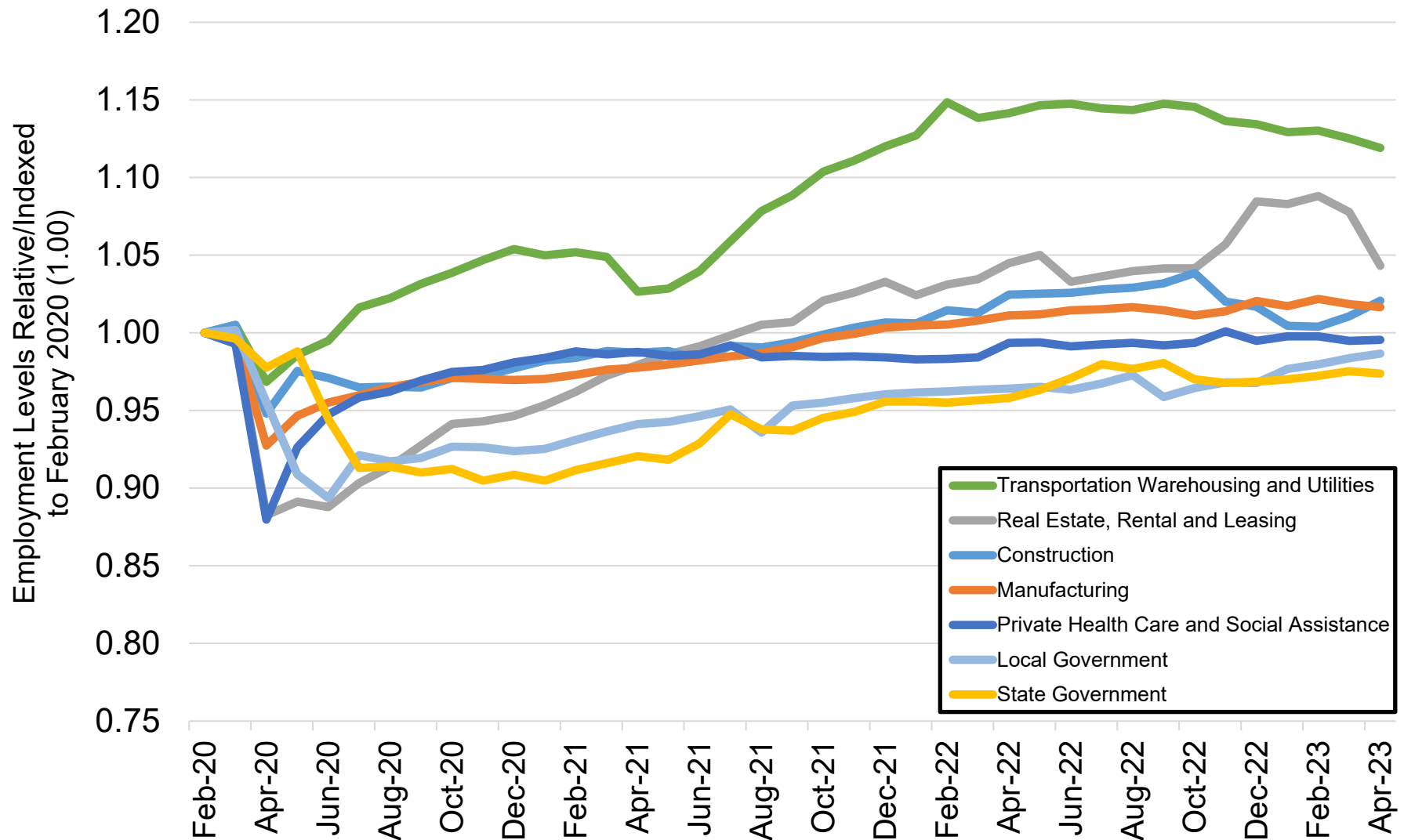
Source: Colorado Department of Labor and Employment; Bureau of Labor Statistics
 Data seasonally adjusted. Note: low, medium, and high wage industries are determined by the 2019 state-level average weekly wage estimates from the Quarterly Census of Employment and Wages. **Low wage industries include:** retail trade; admin support/waste mgmt; private education services; arts, entertainment, and recreation; accommodation and food services; and other services. **Medium wage industries include:** construction; manufacturing; transportation, warehousing, and utilities; real estate, rental, and leasing; private health care and social assistance; state government; and local government. **High wage industries include:** mining and logging; wholesale trade; information; finance and insurance; professional and technical services; management of companies; and federal government.

Colorado Job Loss & Recovery by Low Wage Industries



Source: Colorado Department of Labor and Employment; Bureau of Labor Statistics
 Data seasonally adjusted. Note: low wage industries are determined by the 2019 state-level average weekly wage estimates from the Quarterly Census of Employment and Wages.

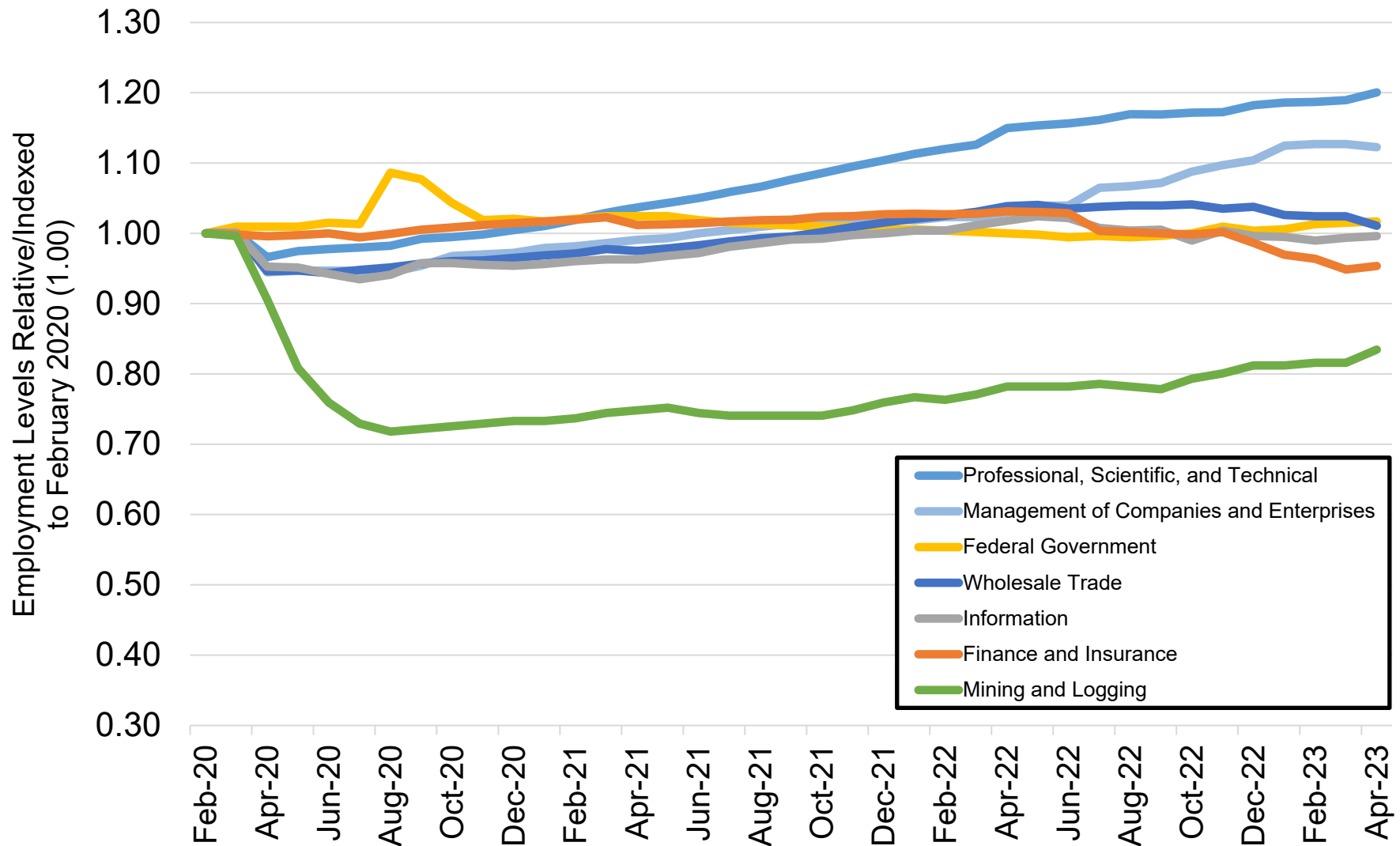
Colorado Job Loss & Recovery by Medium Wage Industries



Source: Colorado Department of Labor and Employment; Bureau of Labor Statistics

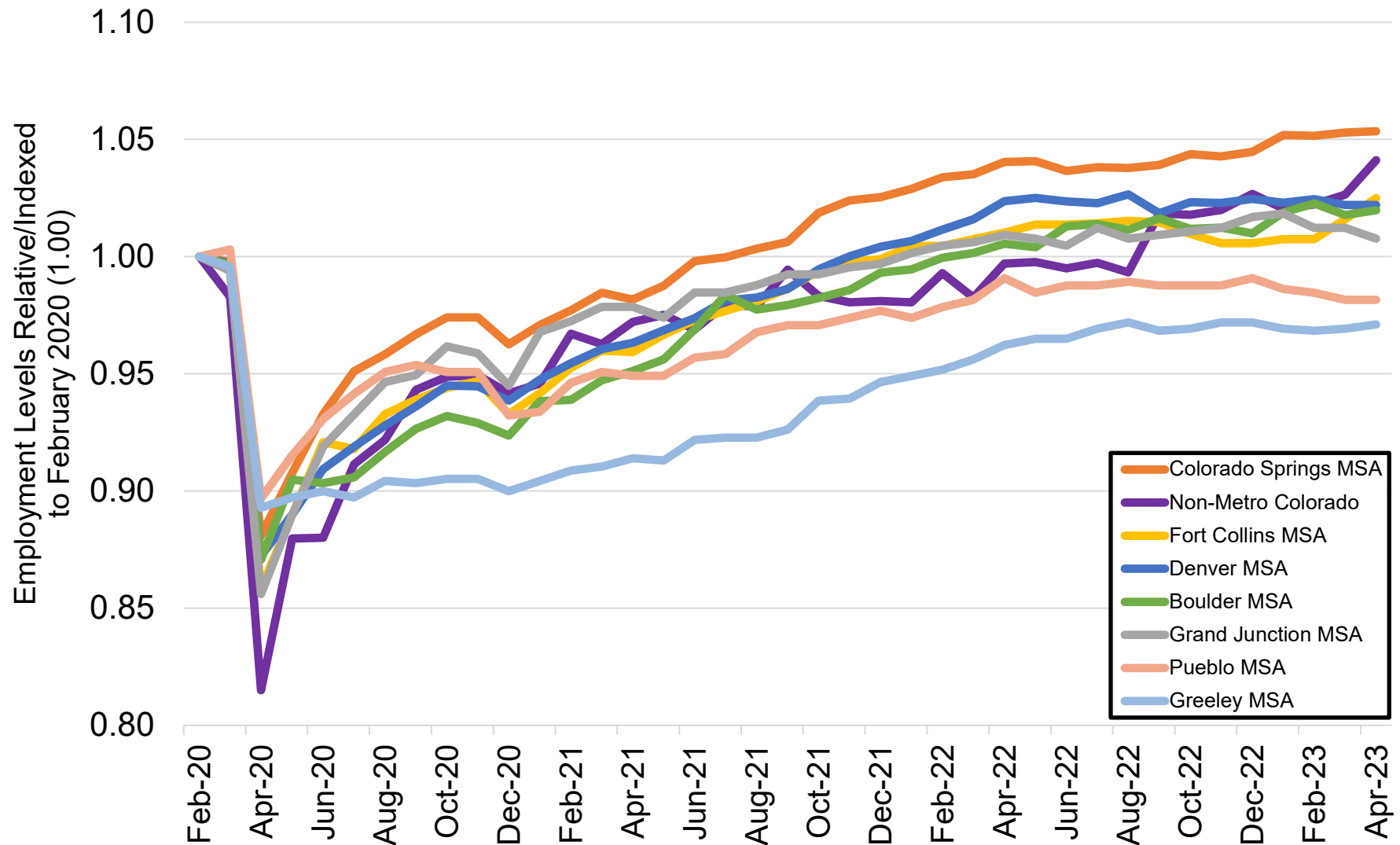
Data seasonally adjusted. Note: medium wage industries are determined by the 2019 state-level average weekly wage estimates from the Quarterly Census of Employment and Wages.

Colorado Job Loss & Recovery by High Wage Industries



Source: Colorado Department of Labor and Employment; Bureau of Labor Statistics
 Data seasonally adjusted. Note: high wage industries are determined by the 2019 state-level average weekly wage estimates from the Quarterly Census of Employment and Wages.

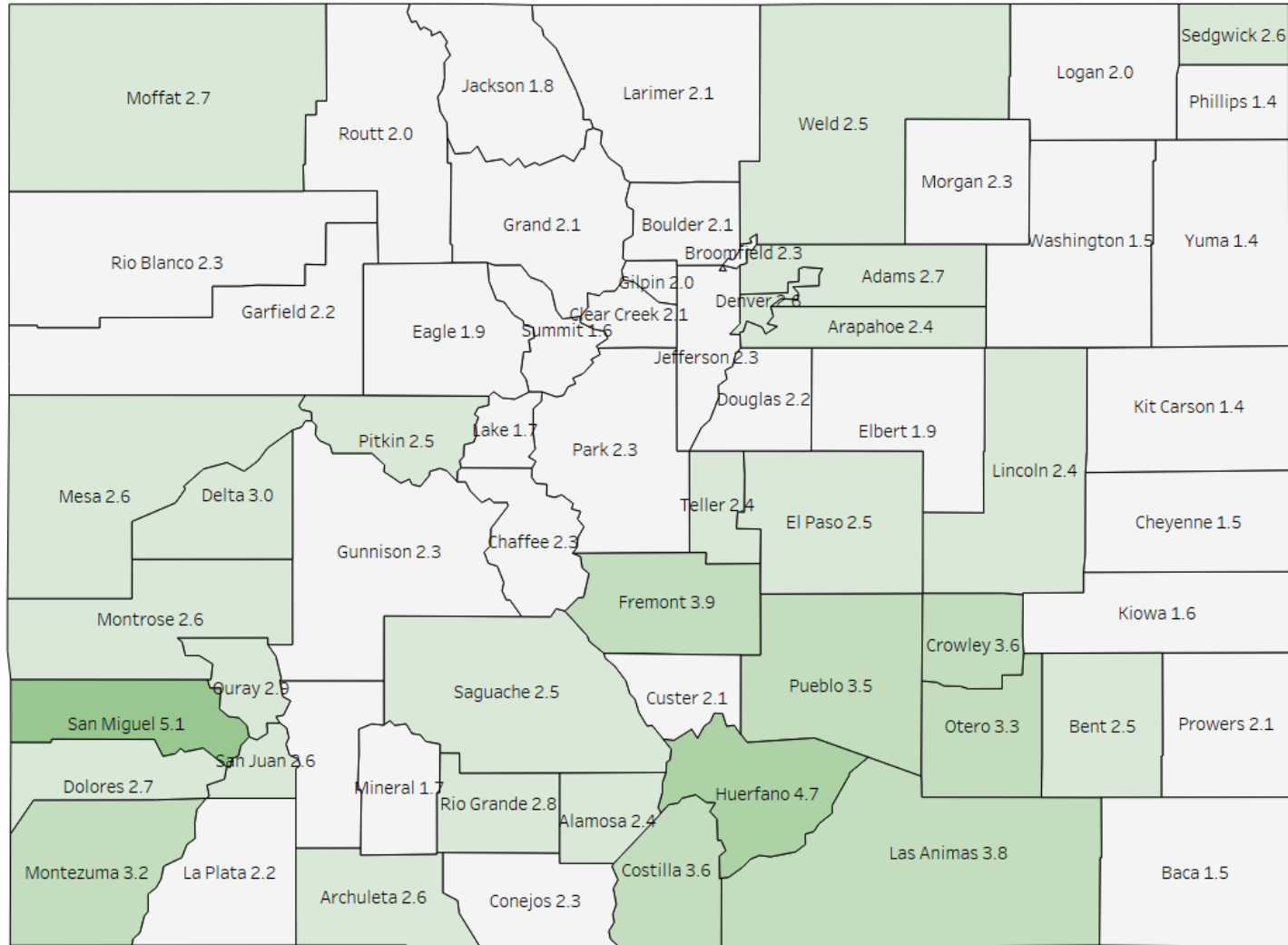
Colorado Job Loss & Recovery by Colorado Substate Area



Source: Colorado Department of Labor and Employment; Bureau of Labor Statistics

Data seasonally adjusted. Note: MSA = Metropolitan Statistical Area; Non-Metro Colorado = residual of state that is not an MSA (47 counties).

County Unemployment Rates April 2023



LABOR FORCE SUMMARY
COLORADO
Preliminary Estimates for April 2023

LABOR FORCE DATA (VALUES IN THOUSANDS)					
SEASONALLY ADJUSTED:				Change from last:	
	Apr-23	Mar-23	Apr-22	Month	Year
Total Civilian Labor Force	3,234.9	3,227.4	3,207.5	7.5	27.3
Unemployment	89.3	91.1	98.6	-1.8	-9.3
Unemployment Rate (%)	2.8	2.8	3.1	0.0	-0.3
Employment	3,145.5	3,136.3	3,109.0	9.3	36.6
UNADJUSTED FOR SEASONALITY:				Change from last:	
	Apr-23	Mar-23	Apr-22	Month	Year
Total Civilian Labor Force	3,216.3	3,232.6	3,179.4	-16.3	37.0
Unemployment	78.2	86.5	94.0	-8.3	-15.8
Unemployment Rate (%)	2.4	2.7	3.0	-0.3	-0.6
Employment	3,138.1	3,146.1	3,085.3	-8.0	52.8

WAGE AND SALARY EMPLOYMENT DATA (VALUES IN THOUSANDS)					
SEASONALLY ADJUSTED:				Change from last:	
	Apr-23	Mar-23	Apr-22	Month	Year
Mining & Logging	22.2	21.7	20.8	0.5	1.4
Construction	182.7	180.9	183.4	1.8	-0.7
Manufacturing	154.0	154.3	153.2	-0.3	0.8
Trade, Transportation, & Utilities	495.2	496.6	505.0	-1.4	-9.8
Information	77.7	77.5	79.4	0.2	-1.7
Financial Activities	173.3	174.7	182.6	-1.4	-9.3
Professional & Business Services	496.1	492.2	483.8	3.9	12.3
Educational & Health Services	355.5	354.6	352.5	0.9	3.0
Leisure & Hospitality	354.7	350.3	337.4	4.4	17.3
Other Services	122.8	124.9	123.0	-2.1	-0.2
Government	455.8	455.1	446.6	0.7	9.2
TOTAL NONAG	2,890.0	2,882.8	2,867.7	7.2	22.3
Labor Disputants	0.0	0.0	0.0	0.0	0.0
UNADJUSTED FOR SEASONALITY:				Change from last:	
	Apr-23	Mar-23	Apr-22	Month	Year
Mining & Logging	22.3	21.4	20.6	0.9	1.7
Construction	180.9	175.4	182.2	5.5	-1.3
Manufacturing	153.7	154.1	152.6	-0.4	1.1
Trade, Transportation, & Utilities	490.1	494.6	500.2	-4.5	-10.1
Information	77.2	77.1	79.7	0.1	-2.5
Financial Activities	172.0	173.6	182.8	-1.6	-10.8
Professional & Business Services	495.7	485.8	483.6	9.9	12.1
Educational & Health Services	354.7	355.0	354.3	-0.3	0.4
Leisure & Hospitality	351.6	348.3	334.6	3.3	17.0
Other Services	122.6	124.5	123.1	-1.9	-0.5
Government	459.8	458.3	451.7	1.5	8.1
TOTAL NONAG	2,880.6	2,868.1	2,865.4	12.5	15.2
Labor Disputants	0.0	0.0	0.0	0.0	0.0

Source: Colorado Department of Labor & Employment; Bureau of Labor Statistics

Not Seasonally Adjusted Labor Force

	April 2023				March 2023			
	Labor Force	Employment	Unemployment	Rate	Labor force	Employment	Unemployment	Rate
Colorado	3,216,307	3,138,083	78,224	2.4	3,232,622	3,146,099	86,523	2.7
Metropolitan Statistical Area								
Boulder	203,753	199,511	4,242	2.1	204,669	199,943	4,726	2.3
Colorado Springs	376,242	366,678	9,564	2.5	378,542	367,906	10,636	2.8
Denver-Aurora-Lakewood	1,727,205	1,685,058	42,147	2.4	1,734,207	1,688,082	46,125	2.7
Fort Collins	213,835	209,344	4,491	2.1	212,338	207,214	5,124	2.4
Grand Junction	76,768	74,743	2,025	2.6	77,208	74,811	2,397	3.1
Greeley	169,699	165,531	4,168	2.5	170,758	165,936	4,822	2.8
Pueblo	76,056	73,391	2,665	3.5	76,505	73,563	2,942	3.8
Counties								
Adams	281,815	274,287	7,528	2.7	283,557	275,074	8,483	3.0
Alamosa	8,317	8,117	200	2.4	8,336	8,091	245	2.9
Arapahoe	375,435	366,397	9,038	2.4	376,987	366,964	10,023	2.7
Archuleta	6,958	6,775	183	2.6	6,956	6,751	205	2.9
Baca	2,024	1,994	30	1.5	2,057	2,026	31	1.5
Bent	1,760	1,716	44	2.5	1,789	1,735	54	3.0
Boulder	203,753	199,511	4,242	2.1	204,669	199,943	4,726	2.3
Broomfield	42,656	41,668	988	2.3	42,845	41,796	1,049	2.4
Chaffee	9,956	9,729	227	2.3	9,863	9,607	256	2.6
Cheyenne	1,001	986	15	1.5	1,016	999	17	1.7
Clear Creek	6,148	6,020	128	2.1	6,172	6,024	148	2.4
Conejos	4,011	3,918	93	2.3	4,030	3,920	110	2.7
Costilla	1,775	1,711	64	3.6	1,774	1,707	67	3.8
Crowley	1,378	1,328	50	3.6	1,391	1,340	51	3.7
Custer	2,341	2,293	48	2.1	2,323	2,266	57	2.5
Delta	13,116	12,727	389	3.0	12,993	12,529	464	3.6
Denver	437,363	425,899	11,464	2.6	439,012	426,625	12,387	2.8
Dolores	1,179	1,147	32	2.7	1,150	1,125	25	2.2
Douglas	208,514	203,960	4,554	2.2	209,356	204,385	4,971	2.4
Eagle	36,654	35,972	682	1.9	36,984	36,274	710	1.9
El Paso	362,665	353,421	9,244	2.5	364,940	354,658	10,282	2.8
Elbert	15,961	15,656	305	1.9	16,033	15,696	337	2.1
Fremont	14,271	13,718	553	3.9	14,146	13,525	621	4.4
Garfield	31,577	30,868	709	2.2	32,431	31,579	852	2.6
Gilpin	3,932	3,852	80	2.0	3,933	3,851	82	2.1
Grand	9,333	9,136	197	2.1	10,025	9,803	222	2.2
Gunnison	11,887	11,619	268	2.3	11,949	11,717	232	1.9
Hinsdale	417	409	8	1.9	390	381	9	2.3
Huerfano	2,379	2,267	112	4.7	2,382	2,249	133	5.6
Jackson	992	974	18	1.8	977	959	18	1.8
Jefferson	343,715	335,917	7,798	2.3	344,676	336,304	8,372	2.4
Kiowa	868	854	14	1.6	888	872	16	1.8
Kit Carson	4,102	4,045	57	1.4	4,220	4,159	61	1.4
La Plata	31,984	31,293	691	2.2	31,340	30,507	833	2.7
Lake	5,244	5,157	87	1.7	5,282	5,184	98	1.9
Larimer	213,835	209,344	4,491	2.1	212,338	207,214	5,124	2.4
Las Animas	5,997	5,771	226	3.8	6,006	5,763	243	4.0
Lincoln	2,163	2,112	51	2.4	2,181	2,119	62	2.8
Logan	10,171	9,970	201	2.0	10,300	10,073	227	2.2
Mesa	76,768	74,743	2,025	2.6	77,208	74,811	2,397	3.1
Mineral	469	461	8	1.7	571	563	8	1.4
Moffat	6,847	6,660	187	2.7	6,959	6,736	223	3.2
Montezuma	12,395	11,993	402	3.2	12,165	11,685	480	3.9
Montrose	21,271	20,728	543	2.6	21,368	20,740	628	2.9
Morgan	15,481	15,120	361	2.3	15,702	15,310	392	2.5
Otero	7,792	7,533	259	3.3	7,871	7,588	283	3.6
Ouray	2,338	2,271	67	2.9	2,315	2,248	67	2.9
Park	11,666	11,402	264	2.3	11,636	11,363	273	2.3
Phillips	2,351	2,317	34	1.4	2,398	2,357	41	1.7
Pitkin	10,833	10,565	268	2.5	10,984	10,763	221	2.0
Prowers	6,205	6,077	128	2.1	6,272	6,129	143	2.3
Pueblo	76,056	73,391	2,665	3.5	76,505	73,563	2,942	3.8
Rio Blanco	2,860	2,793	67	2.3	2,849	2,765	84	2.9
Rio Grande	5,197	5,052	145	2.8	5,208	5,033	175	3.4
Routt	15,733	15,413	320	2.0	16,811	16,499	312	1.9
Saguache	3,344	3,260	84	2.5	3,374	3,279	95	2.8
San Juan	494	481	13	2.6	539	524	15	2.8
San Miguel	5,101	4,839	262	5.1	6,306	6,205	101	1.6
Sedgwick	969	944	25	2.6	988	959	29	2.9
Summit	23,097	22,720	377	1.6	24,251	23,853	398	1.6
Teller	13,577	13,257	320	2.4	13,602	13,248	354	2.6
Washington	2,700	2,659	41	1.5	2,749	2,701	48	1.7
Weld	169,699	165,531	4,168	2.5	170,758	165,936	4,822	2.8
Yuma	5,409	5,332	77	1.4	5,530	5,443	87	1.6

All estimates made in cooperation with the U.S. Department of Labor, Bureau of Labor Statistics and adjusted to Current Population Survey data. Estimates have been revised to incorporate population data from the American Community Survey.
 Colorado Department of Labor and Employment 2023

Not Seasonally Adjusted Labor Force

	April 2023				April 2022			
	Labor Force	Employment	Unemployment	Rate	Labor force	Employment	Unemployment	Rate
Colorado	3,216,307	3,138,083	78,224	2.4	3,179,354	3,085,322	94,032	3.0
Metropolitan Statistical Area								
Boulder	203,753	199,511	4,242	2.1	201,103	196,232	4,871	2.4
Colorado Springs	376,242	366,678	9,564	2.5	370,341	358,806	11,535	3.1
Denver-Aurora-Lakewood	1,727,205	1,685,058	42,147	2.4	1,719,252	1,669,437	49,815	2.9
Fort Collins	213,835	209,344	4,491	2.1	209,149	203,587	5,562	2.7
Grand Junction	76,768	74,743	2,025	2.6	76,710	74,241	2,469	3.2
Greeley	169,699	165,531	4,168	2.5	166,993	161,687	5,306	3.2
Pueblo	76,056	73,391	2,665	3.5	76,271	72,967	3,304	4.3
Counties								
Adams	281,815	274,287	7,528	2.7	280,890	271,670	9,220	3.3
Alamosa	8,317	8,117	200	2.4	8,040	7,755	285	3.5
Arapahoe	375,435	366,397	9,038	2.4	374,386	363,070	11,316	3.0
Archuleta	6,958	6,775	183	2.6	6,721	6,502	219	3.3
Baca	2,024	1,994	30	1.5	1,952	1,917	35	1.8
Bent	1,760	1,716	44	2.5	1,658	1,594	64	3.9
Boulder	203,753	199,511	4,242	2.1	201,103	196,232	4,871	2.4
Broomfield	42,656	41,668	988	2.3	42,353	41,303	1,050	2.5
Chaffee	9,956	9,729	227	2.3	9,533	9,284	249	2.6
Cheyenne	1,001	986	15	1.5	984	965	19	1.9
Clear Creek	6,148	6,020	128	2.1	6,135	5,961	174	2.8
Conejos	4,011	3,918	93	2.3	3,850	3,727	123	3.2
Costilla	1,775	1,711	64	3.6	1,693	1,621	72	4.3
Crowley	1,378	1,328	50	3.6	1,349	1,296	53	3.9
Custer	2,341	2,293	48	2.1	2,200	2,135	65	3.0
Delta	13,116	12,727	389	3.0	12,974	12,516	458	3.5
Denver	437,363	425,899	11,464	2.6	435,127	422,032	13,095	3.0
Dolores	1,179	1,147	32	2.7	1,105	1,070	35	3.2
Douglas	208,514	203,960	4,554	2.2	207,067	202,112	4,955	2.4
Eagle	36,654	35,972	682	1.9	35,326	34,432	894	2.5
El Paso	362,665	353,421	9,244	2.5	356,973	345,834	11,139	3.1
Elbert	15,961	15,656	305	1.9	15,804	15,428	376	2.4
Fremont	14,271	13,718	553	3.9	14,263	13,609	654	4.6
Garfield	31,577	30,868	709	2.2	30,247	29,359	888	2.9
Gilpin	3,932	3,852	80	2.0	3,927	3,815	112	2.9
Grand	9,333	9,136	197	2.1	9,020	8,775	245	2.7
Gunnison	11,887	11,619	268	2.3	11,179	10,886	293	2.6
Hinsdale	417	409	8	1.9	390	380	10	2.6
Huerfano	2,379	2,267	112	4.7	2,358	2,220	138	5.9
Jackson	992	974	18	1.8	888	870	18	2.0
Jefferson	343,715	335,917	7,798	2.3	342,005	332,781	9,224	2.7
Kiowa	868	854	14	1.6	829	815	14	1.7
Kit Carson	4,102	4,045	57	1.4	3,857	3,780	77	2.0
La Plata	31,984	31,293	691	2.2	30,423	29,536	887	2.9
Lake	5,244	5,157	87	1.7	4,903	4,777	126	2.6
Larimer	213,835	209,344	4,491	2.1	209,149	203,587	5,562	2.7
Las Animas	5,997	5,771	226	3.8	6,049	5,787	262	4.3
Lincoln	2,163	2,112	51	2.4	2,133	2,078	55	2.6
Logan	10,171	9,970	201	2.0	10,009	9,739	270	2.7
Mesa	76,768	74,743	2,025	2.6	76,710	74,241	2,469	3.2
Mineral	469	461	8	1.7	417	406	11	2.6
Moffat	6,847	6,660	187	2.7	6,684	6,464	220	3.3
Montezuma	12,395	11,993	402	3.2	12,099	11,652	447	3.7
Montrose	21,271	20,728	543	2.6	20,821	20,079	742	3.6
Morgan	15,481	15,120	361	2.3	14,995	14,486	509	3.4
Otero	7,792	7,533	259	3.3	7,625	7,318	307	4.0
Ouray	2,338	2,271	67	2.9	2,355	2,272	83	3.5
Park	11,666	11,402	264	2.3	11,558	11,265	293	2.5
Phillips	2,351	2,317	34	1.4	2,213	2,167	46	2.1
Pitkin	10,833	10,565	268	2.5	10,395	10,062	333	3.2
Prowers	6,205	6,077	128	2.1	5,890	5,720	170	2.9
Pueblo	76,056	73,391	2,665	3.5	76,271	72,967	3,304	4.3
Rio Blanco	2,860	2,793	67	2.3	2,750	2,645	105	3.8
Rio Grande	5,197	5,052	145	2.8	5,022	4,812	210	4.2
Routt	15,733	15,413	320	2.0	14,984	14,572	412	2.7
Saguache	3,344	3,260	84	2.5	3,201	3,089	112	3.5
San Juan	494	481	13	2.6	488	473	15	3.1
San Miguel	5,101	4,839	262	5.1	4,761	4,488	273	5.7
Sedgwick	969	944	25	2.6	992	966	26	2.6
Summit	23,097	22,720	377	1.6	22,151	21,685	466	2.1
Teller	13,577	13,257	320	2.4	13,368	12,972	396	3.0
Washington	2,700	2,659	41	1.5	2,596	2,530	66	2.5
Weld	169,699	165,531	4,168	2.5	166,993	161,687	5,306	3.2
Yuma	5,409	5,332	77	1.4	5,160	5,053	107	2.1

All estimates made in cooperation with the U.S. Department of Labor, Bureau of Labor Statistics and adjusted to Current Population Survey data. Estimates have been revised to incorporate population data from the American Community Survey.
 Colorado Department of Labor and Employment 2023

Not Seasonally Adjusted Labor Force									
	April 2023				March 2023				
Select Cities in Colorado	Labor Force	Employed	Unemployed	Rate	Labor Force	Employment	Unemployed	Rate	
Arvada	71,134	69,511	1,623	2.3	71,312	69,593	1,719	2.4	
Aurora	210,005	204,511	5,494	2.6	210,920	204,858	6,062	2.9	
Boulder	68,278	66,886	1,392	2.0	68,623	67,030	1,593	2.3	
Brighton	20,798	20,191	607	2.9	20,924	20,248	676	3.2	
Castle Rock	39,424	38,556	868	2.2	39,617	38,636	981	2.5	
Centennial	65,128	63,682	1,446	2.2	65,422	63,781	1,641	2.5	
Colorado Springs	251,703	245,384	6,319	2.5	253,204	246,243	6,961	2.7	
Commerce City	31,049	30,101	948	3.1	31,256	30,187	1,069	3.4	
Englewood	21,911	21,361	550	2.5	22,003	21,394	609	2.8	
Erie	18,727	18,340	387	2.1	18,794	18,383	411	2.2	
Fort Collins	103,621	101,503	2,118	2.0	102,906	100,470	2,436	2.4	
Fountain	13,742	13,383	359	2.6	13,865	13,430	435	3.1	
Grand Junction	30,958	30,128	830	2.7	31,160	30,156	1,004	3.2	
Greeley	52,105	50,684	1,421	2.7	52,450	50,808	1,642	3.1	
Lafayette	18,255	17,859	396	2.2	18,310	17,898	412	2.3	
Lakewood	89,702	87,463	2,239	2.5	89,948	87,564	2,384	2.7	
Littleton	25,824	25,236	588	2.3	25,909	25,275	634	2.4	
Longmont	57,627	56,360	1,267	2.2	57,917	56,482	1,435	2.5	
Loveland	47,350	46,299	1,051	2.2	47,027	45,828	1,199	2.5	
Northglenn	21,688	21,121	567	2.6	21,792	21,182	610	2.8	
Parker	34,941	34,205	736	2.1	35,091	34,277	814	2.3	
Pueblo	48,473	46,588	1,885	3.9	48,762	46,697	2,065	4.2	
Thornton	84,019	81,967	2,052	2.4	84,468	82,202	2,266	2.7	
Westminster	68,155	66,446	1,709	2.5	68,446	66,589	1,857	2.7	
Wheat Ridge	17,643	17,186	457	2.6	17,702	17,206	496	2.8	
Windsor	15,677	15,317	360	2.3	15,736	15,312	424	2.7	

	April 2023				April 2022			
Select Cities in Colorado	Labor Force	Employed	Unemployed	Rate	Labor Force	Employment	Unemployed	Rate
Arvada	71,134	69,511	1,623	2.3	70,760	68,861	1,899	2.7
Aurora	210,005	204,511	5,494	2.6	209,591	202,643	6,948	3.3
Boulder	68,278	66,886	1,392	2.0	67,285	65,786	1,499	2.2
Brighton	20,798	20,191	607	2.9	20,708	19,987	721	3.5
Castle Rock	39,424	38,556	868	2.2	39,214	38,206	1,008	2.6
Centennial	65,128	63,682	1,446	2.2	64,603	63,104	1,499	2.3
Colorado Springs	251,703	245,384	6,319	2.5	247,536	240,116	7,420	3.0
Commerce City	31,049	30,101	948	3.1	30,890	29,814	1,076	3.5
Englewood	21,911	21,361	550	2.5	21,873	21,167	706	3.2
Erie	18,727	18,340	387	2.1	18,388	17,971	417	2.3
Fort Collins	103,621	101,503	2,118	2.0	101,169	98,711	2,458	2.4
Fountain	13,742	13,383	359	2.6	13,570	13,096	474	3.5
Grand Junction	30,958	30,128	830	2.7	30,917	29,926	991	3.2
Greeley	52,105	50,684	1,421	2.7	51,294	49,507	1,787	3.5
Lafayette	18,255	17,859	396	2.2	17,964	17,566	398	2.2
Lakewood	89,702	87,463	2,239	2.5	89,360	86,646	2,714	3.0
Littleton	25,824	25,236	588	2.3	25,683	25,007	676	2.6
Longmont	57,627	56,360	1,267	2.2	57,006	55,429	1,577	2.8
Loveland	47,350	46,299	1,051	2.2	46,378	45,025	1,353	2.9
Northglenn	21,688	21,121	567	2.6	21,626	20,919	707	3.3
Parker	34,941	34,205	736	2.1	34,734	33,896	838	2.4
Pueblo	48,473	46,588	1,885	3.9	48,622	46,319	2,303	4.7
Thornton	84,019	81,967	2,052	2.4	83,586	81,185	2,401	2.9
Westminster	68,155	66,446	1,709	2.5	67,767	65,818	1,949	2.9
Wheat Ridge	17,643	17,186	457	2.6	17,605	17,026	579	3.3
Windsor	15,677	15,317	360	2.3	15,350	14,946	404	2.6

All estimates made in cooperation with the U.S. Department of Labor, Bureau of Labor Statistics and adjusted to Current Population Survey data. Estimates have been revised to incorporate population data from the American Community Survey. Colorado Department of Labor and Employment 2023

Colorado LMI Data Overview

April 2023

Employment					
	Apr-23	Mar-23	Apr-22	Change from previous:	
				Period	Year
Nonfarm Wage and Salary Employment (SA)	2,890,000	2,882,800	2,867,700	7,200	22,300
Total Resident Employment (SA)	3,145,500	3,136,300	3,109,000	9,200	36,500
	Q3 2022	Q2 2022	Q3 2021		
UI Covered Total Employment	2,832,186	2,820,124	2,733,259	12,062	98,927
UI Covered Private Employment	2,404,030	2,387,838	2,315,264	16,192	88,766

Unemployment					
	Apr-23	Mar-23	Apr-22	Change from previous:	
				Period	Year
Unemployment (SA)	89,300	91,100	98,600	(1,800)	(9,300)
Percent Unemployed (SA)	2.8%	2.8%	3.1%	0.0	(0.3)
	Apr-23	Mar-23	Apr-22		
Initial Claims	18,719	12,463	11,541	6,256	7,178
Continued Weeks Claimed	105,244	209,655	100,960	(104,411)	4,284

Wages and Earnings					
	Q3 2022	Q2 2022	Q3 2021	Change from previous:	
				Period	Year
Total Average Weekly Wage	\$1,437	\$1,357	\$1,321	\$80	\$116
Private Average Weekly Wage	\$1,447	\$1,374	\$1,326	\$73	\$121
	Apr-23	Mar-23	Apr-22		
Average Weekly Earnings (Construction)	\$1,265.62	\$1,310.92	\$1,216.38	(\$45.30)	\$49.24
Average Weekly Earnings (Manufacturing)	\$1,168.40	\$1,130.88	\$1,058.01	\$37.52	\$110.39

CO Unemployment Insurance Trust Fund					
	Mar-23	Feb-23	Mar-22	Change from previous:	
				Period	Year
Employer Contributions	\$3,399,864	\$49,354,297	\$6,959,572	(\$45,954,434)	(\$3,559,708)
Benefits Paid	\$59,160,965	\$65,936,143	\$36,403,688	(\$6,775,178)	\$22,757,277
Average Weekly Benefit Amount	\$560.97	\$548.89	\$460.12	\$12.09	\$100.85
Duration (weeks)	11.01	8.53	14.46	2.48	(3.45)
Outstanding Title XII Loan Balance	\$56,529,775	\$4,348,974	\$1,013,089,861	\$52,180,802	(956,560,085)

Consumer Price Index for All Urban Consumers					
Not seasonally adjusted	Mar-23	Jan-23	Mar-22	% Change from previous:	
				Period	Year
Denver-Aurora-Lakewood	316.566	312.392	299.529	1.3%	5.7%
US City Average	301.836	299.170	287.504	0.9%	5.0%

(Most current data available for all categories)