

PRESS RELEASE

Colorado Department of Labor and Employment • 633 17th Street, Suite 1200 • Denver, CO 80202 • (303) 318-8004 • Fax: (303) 318-8070

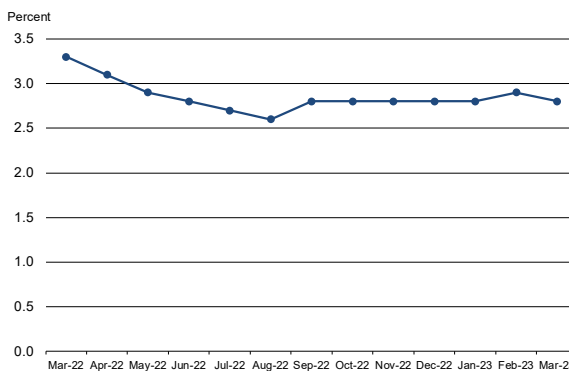
For Immediate Release

Date: April 21, 2023/ 8:00 A.M.
Contact: Office of Government, Policy and Public Relations
Email: cdle_pr@state.co.us
Web: <http://www.colmigateway.com>

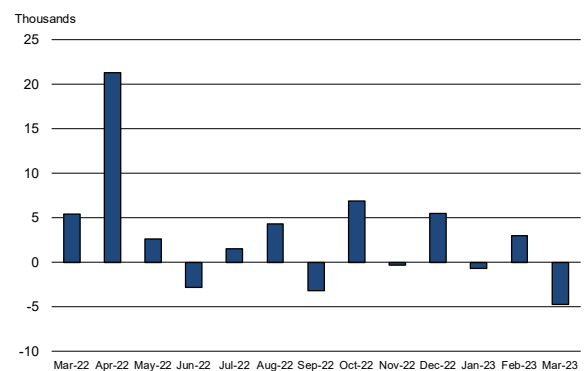
Colorado Employment Situation – March 2023

Colorado's Unemployment Rate Falls to 2.8 Percent, Continues to Trend Below U.S.

Colorado unemployment rate, seasonally adjusted
March 2022 - March 2023



Colorado nonfarm payroll employment over-the-month
change, seasonally adjusted, March 2022 - March 2023



Household survey data

- According to the survey of households, Colorado's seasonally adjusted **unemployment rate** declined one-tenth of a percentage point in March to 2.8 percent compared to the February rate of 2.9 percent. The **number of unemployed individuals** fell by 1,700 over the same time period to 91,000. Colorado's unemployment rate has been below 3.0 percent for eleven consecutive months and remains at pre-pandemic levels. The national unemployment rate also fell by one-tenth of a percentage point to 3.5 percent from February to March.
- Colorado's **labor force** increased by 10,300 in March to 3,227,300. The share of Coloradans participating in the labor force rose to 68.5 percent in March, compared to 68.3 percent the month prior. The U.S. labor force participation rate was 62.6 percent in March, increasing one-tenth of a percentage point from the month prior.
- The **number of individuals employed** in Colorado grew by 11,900 in March to 3,136,300, which represents 66.5 percent of the state's 16+ population. The rate of 66.5 percent is unchanged from a year prior. The national employment-to-population ratio rose two-tenths of a percentage point in March to 60.4 percent.

Establishment survey data

- **Nonfarm payroll jobs** in Colorado declined by 4,700 from February to March for a total of 2,879,800 jobs, according to the survey of business establishments. Private sector payroll jobs decreased by 6,200, while government added 1,500 jobs.
- **February estimates** were revised down to 2,884,500, and the over the month change from January to February was a gain of 3,000 rather than the originally estimated increase of 6,200 (monthly revisions are based on additional responses from businesses and government agencies since the last published estimates).
- **Private industry sectors with significant job gains** in March were: other services ($\approx 1,200$). Significant over the month private sector declines occurred in professional and business services ($\approx 2,200$), trade, transportation, and utilities ($\approx 2,000$), and financial activities ($\approx 1,900$).
- **Since March 2022**, nonfarm payroll jobs have increased 33,400, with the private sector growing by 24,700 and government adding 8,700 jobs. The largest **private sector job gains** were in leisure and hospitality ($\approx 15,700$), professional and business services ($\approx 12,900$), and educational and health services ($\approx 4,600$). During that same period financial activities ($\approx 6,400$), trade, transportation, and utilities ($\approx 5,000$), construction ($\approx 1,800$), and information ($\approx 1,300$) **payroll jobs declined**. Colorado's **rate of job growth** over the past year is 1.2 percent, lagging the U.S. rate of 2.7 percent.
- Over the year, the **average workweek** for all Colorado employees on private nonfarm payrolls increased from 32.9 to 33.1 hours, while **average hourly earnings** grew from \$33.72 to \$35.21, over two dollars more than the national average hourly earnings of \$33.18.

###

All Colorado estimates from the establishment and household surveys, including greater geographic detail, are available at: <http://www.colmigateway.com>. Estimates for all states and the nation are available at: <http://www.bls.gov>.

For data visualizations, visit public.tableau.com/app/profile/cdle.lmi.

The **April 2023 Colorado Employment Situation** will be released at 8:00 AM on Friday, May 19, 2023. The full schedule of release dates for calendar year 2023 estimates is available at <http://www.colmigateway.com>.

###

Technical Notes

This release provides information on industry employment and labor force statistics for March 2023, the most current estimates available from the Colorado Department of Labor and Employment. The reference period for the establishment and household surveys was the pay period or week that includes the 12th of the month.

The unemployment rate, labor force, labor force participation, total employment and the number of unemployed are based on a survey of households. The total employment estimate derived from this survey is intended to measure the number of people employed.

Nonfarm payroll jobs estimates are based on a survey of business establishments and government agencies, and are intended to measure the number of jobs, not the number of people employed. Other series based on this survey include private sector average weekly hours, average hourly earnings and average weekly earnings.

The business establishment survey covers about seven times the number of households surveyed and is therefore considered a more reliable indicator of economic conditions. Because the estimates are based on two separate surveys, one measuring jobs by worksite and the other measuring persons employed and unemployed by household, estimates based on these surveys may provide seemingly conflicting results.

###

Supplemental information available in following pages

MARCH 2023

EMPLOYMENT SITUATION SUPPLEMENTAL CHARTS

April 21, 2023

This briefing provides information on industry employment and labor force statistics, derived from surveys of business establishments and households. The reference period for these surveys is the pay period or week that includes the 12th of the month. The reference week for March was specifically March 12th – March 18th.

Colorado and U.S. Unemployment Rates Decrease Slightly in March

Percent

7

6

5

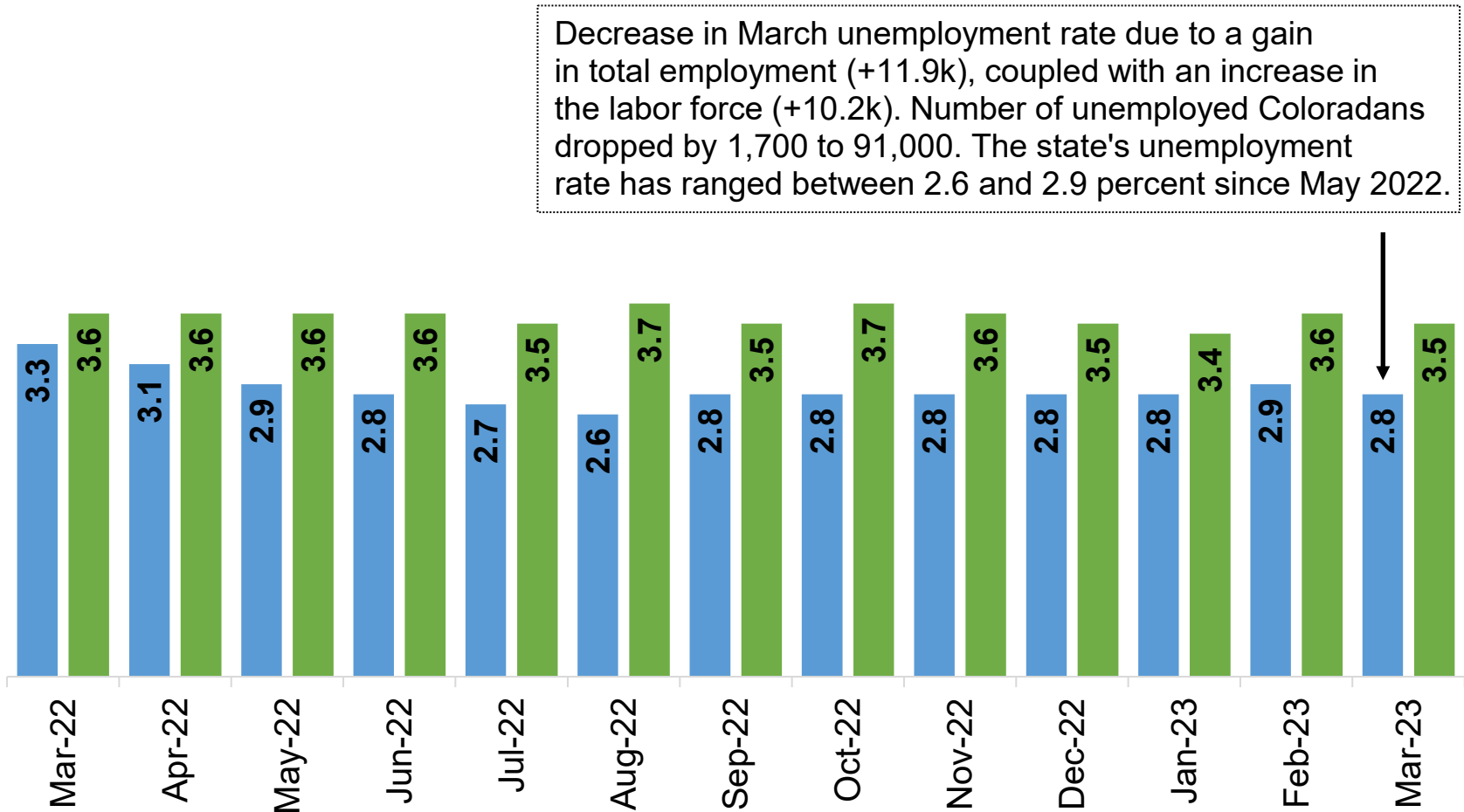
4

3

2

1

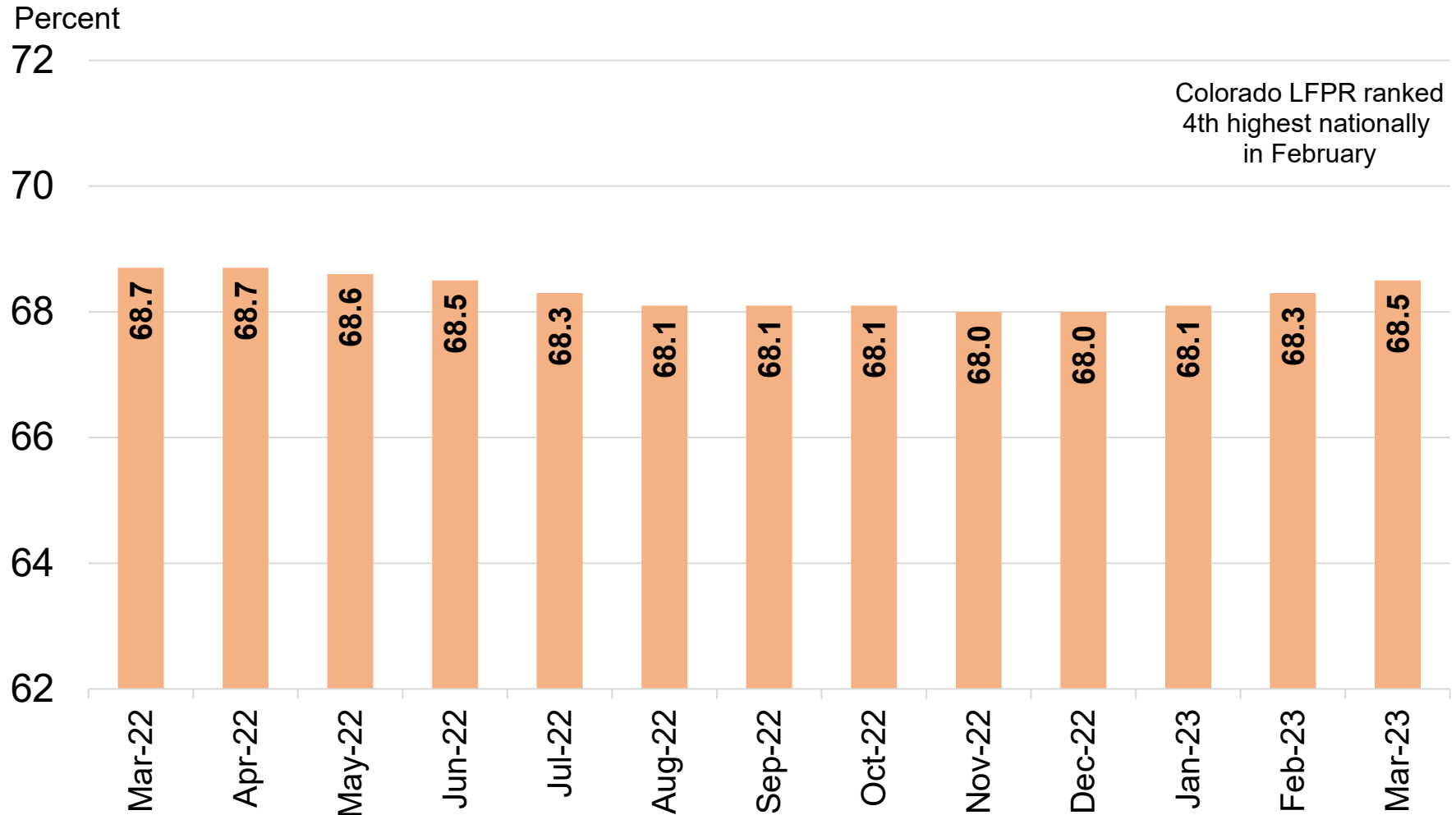
0



Source: Colorado Department of Labor and Employment; Bureau of Labor Statistics
Data seasonally adjusted

■ Colorado ■ U.S.

Colorado's Labor Force Participation Rate Rises to 68.5 Percent in March



Source: Colorado Department of Labor and Employment; Bureau of Labor Statistics

Data seasonally adjusted. Estimates share of Colorado's 16+ population that is in the labor force in a given month.

February 2020 rate was 68.8 percent.

For further information on labor force definitions, go here: <https://www.bls.gov/lau/laufa.htm>

Colorado's Employment-to-Population Ratio Moves Up Two-Tenths of a Percentage Point in March

Percent

68

67

66

65

64

63

62

Colorado EPOP ranked
4th highest nationally
in February

Mar-22

Apr-22

May-22

Jun-22

Jul-22

Aug-22

Sep-22

Oct-22

Nov-22

Dec-22

Jan-23

Feb-23

Mar-23

66.5

66.6

66.6

66.6

66.4

66.3

66.2

66.1

66.1

66.1

66.2

66.3

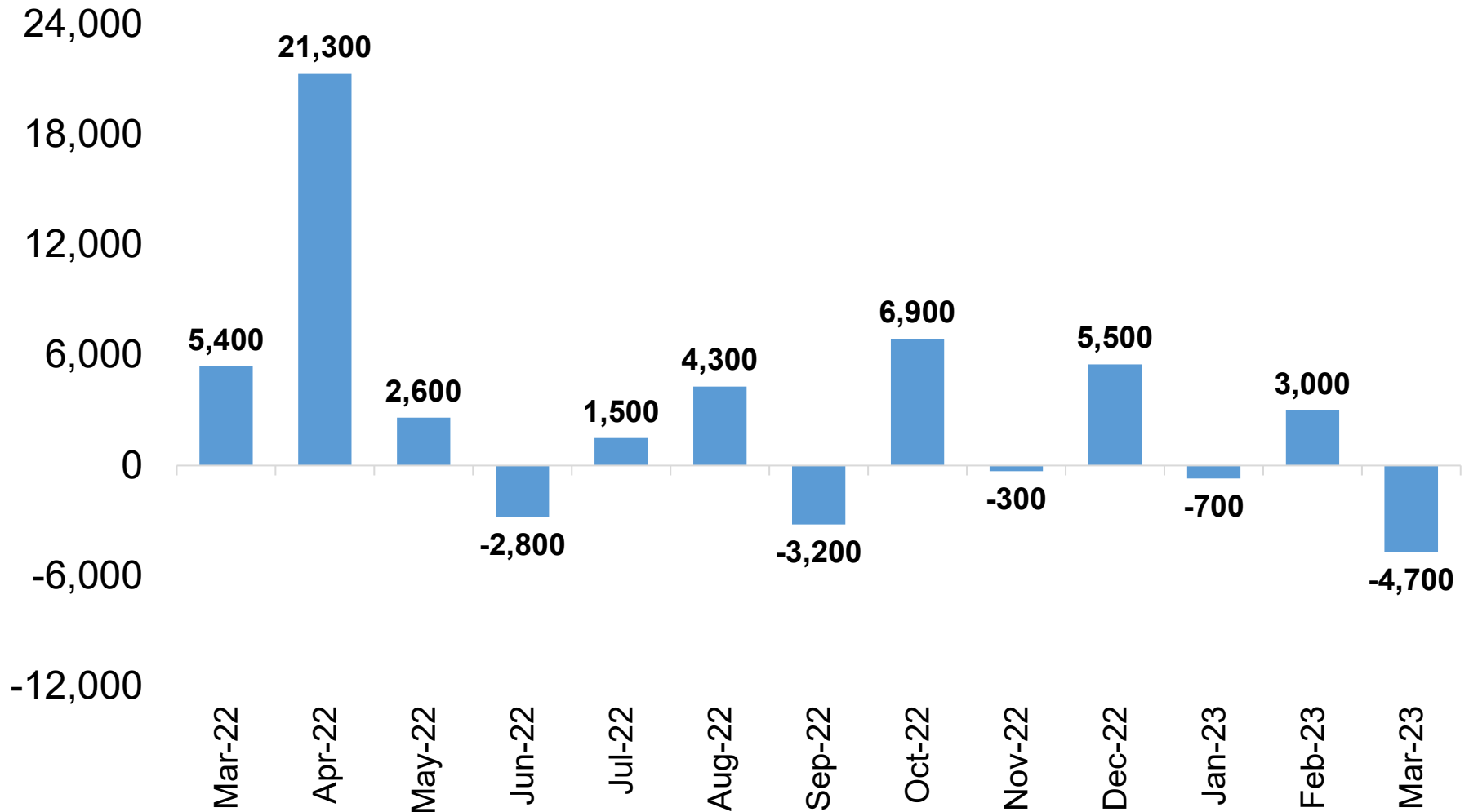
66.5

Source: Colorado Department of Labor and Employment; Bureau of Labor Statistics

Data seasonally adjusted. Estimates share of Colorado's 16+ population that is employed in a given month.

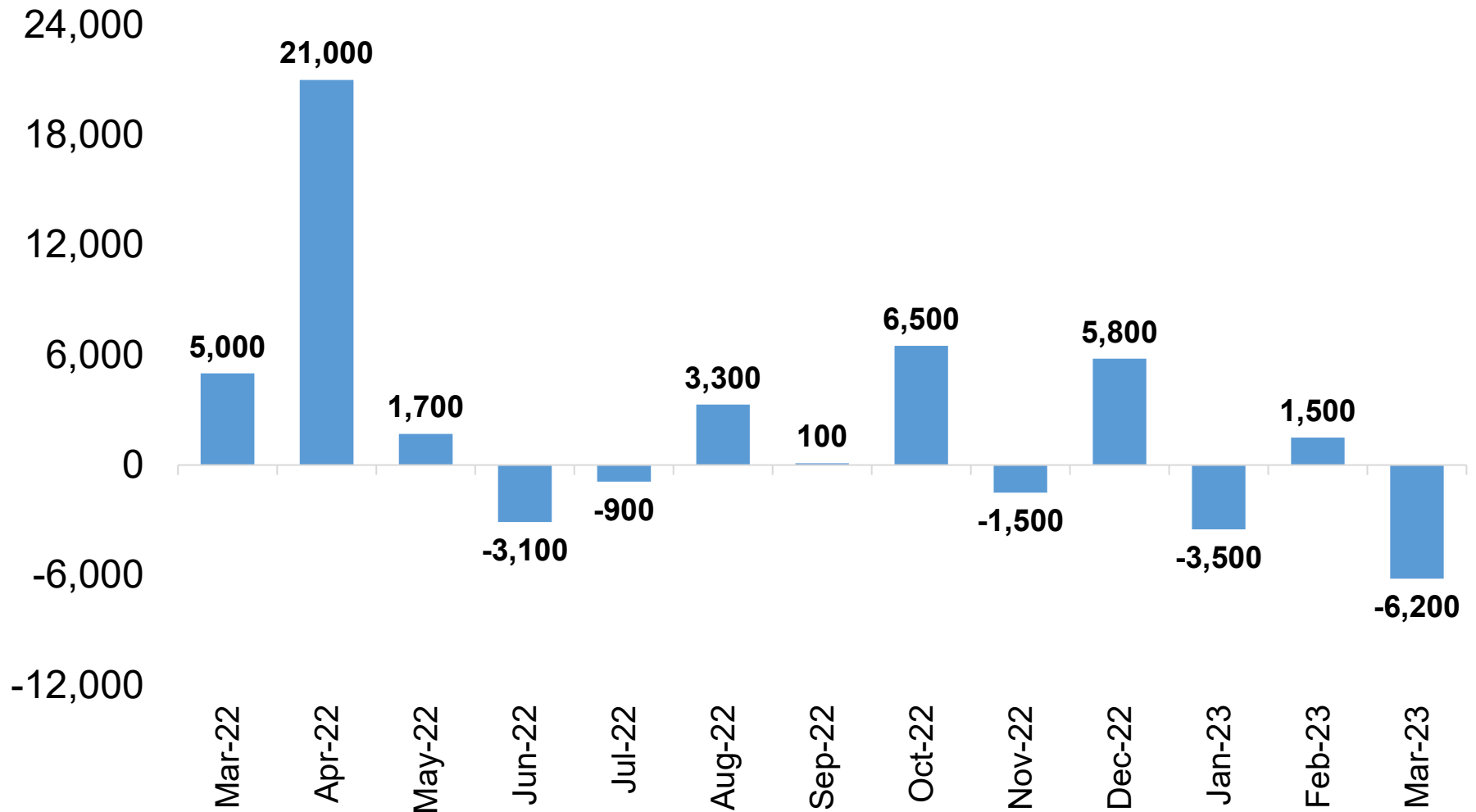
February 2020 rate was 66.6 percent.

Colorado Total Nonfarm Jobs Fell by 4,700 in March; February Numbers Revised Down 3,200



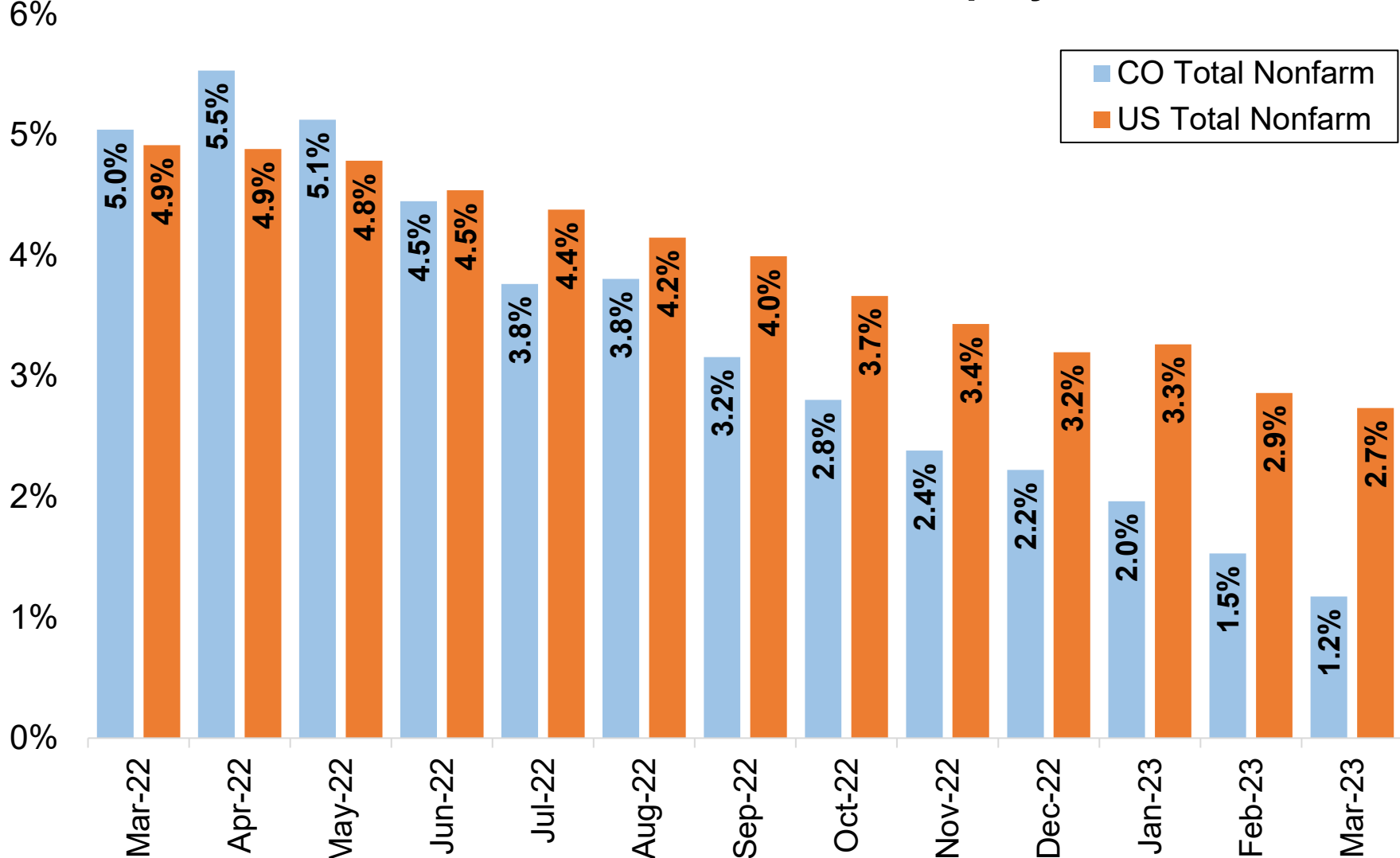
Source: Colorado Department of Labor and Employment; Bureau of Labor Statistics
Data seasonally adjusted

6,200 Private Sector Jobs Lost in March; February Figures Revised Down 3,500



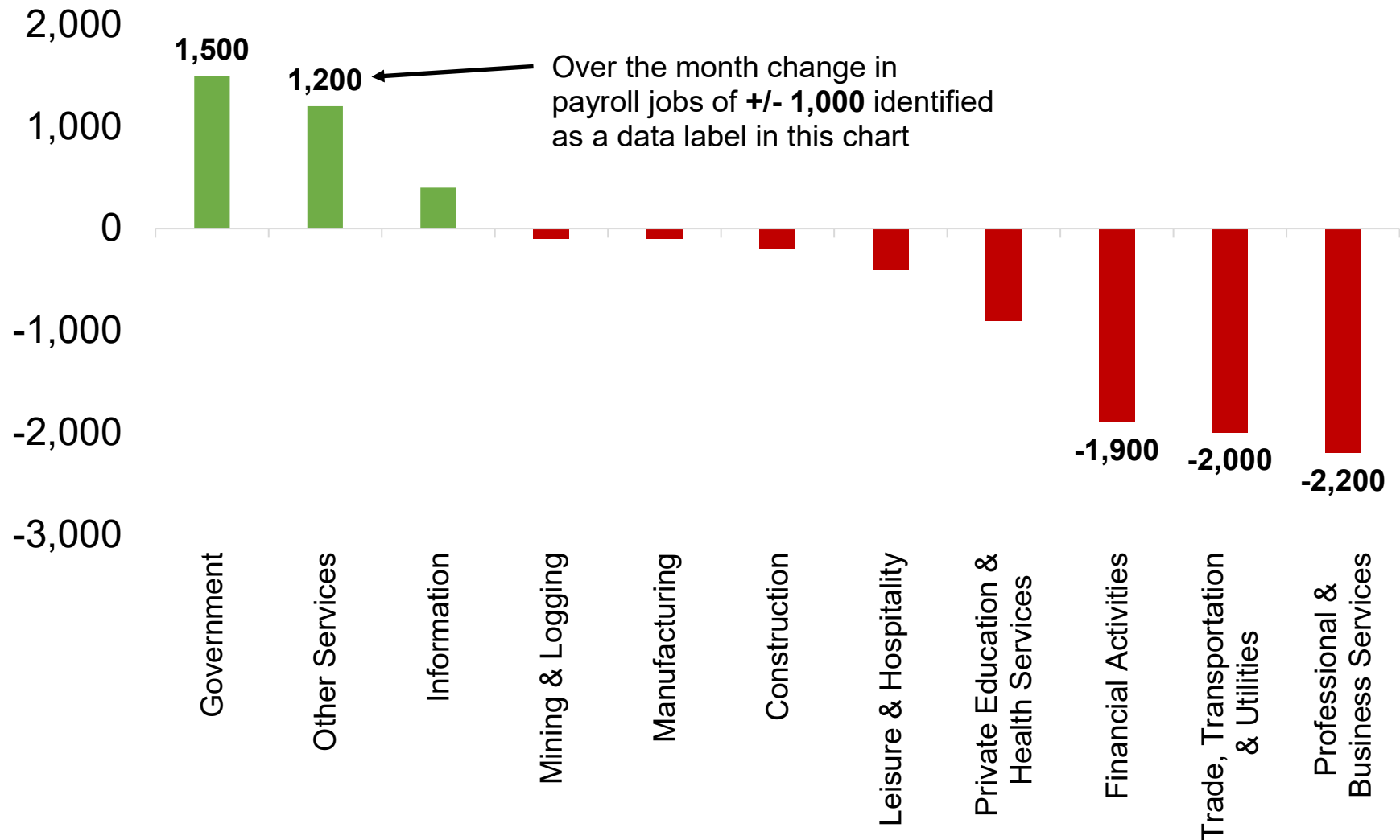
Source: Colorado Department of Labor and Employment; Bureau of Labor Statistics
Data seasonally adjusted

Colorado and U.S. Over the Year Growth Rates for Total Nonfarm Employment



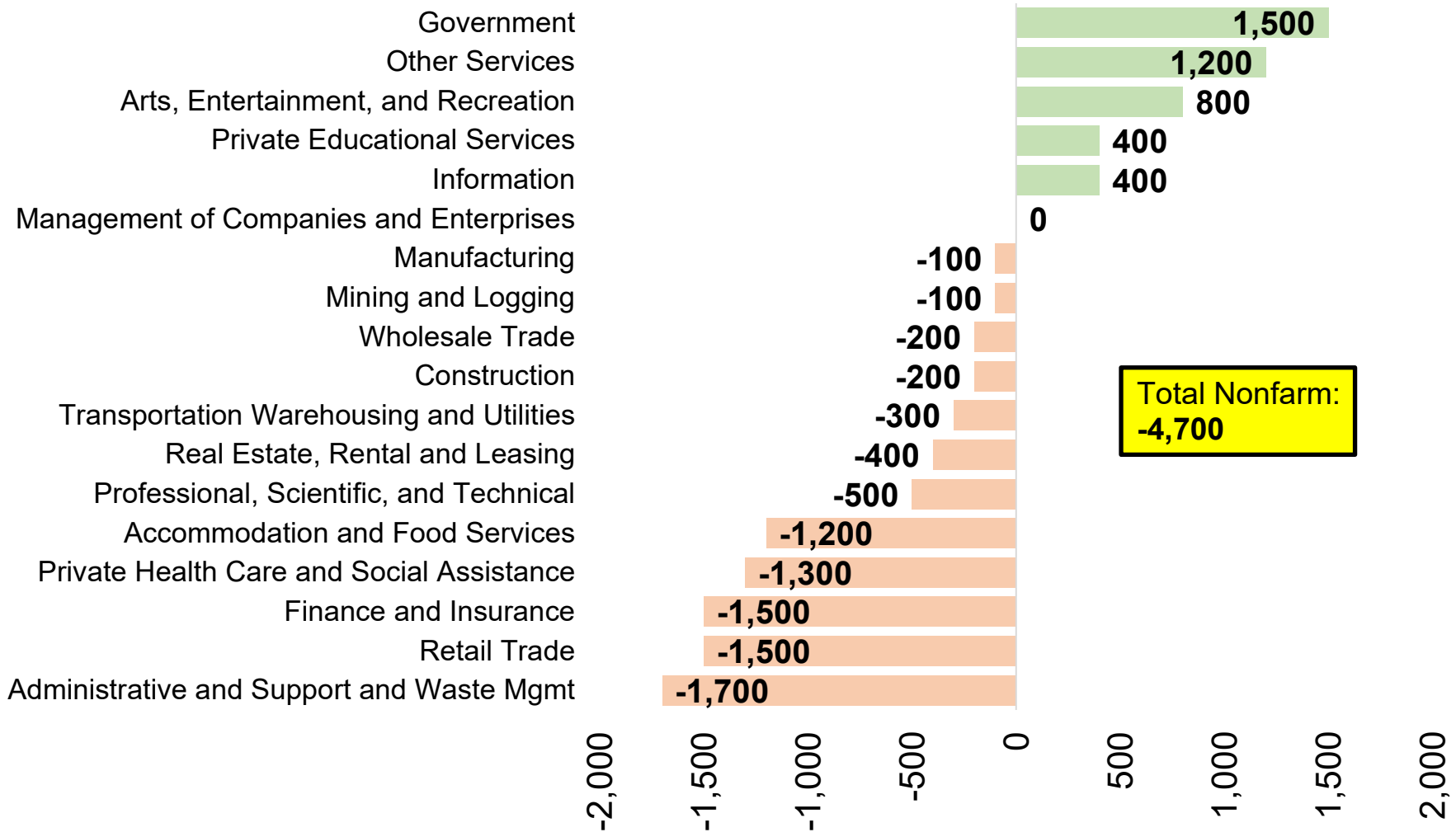
Source: Colorado Department of Labor and Employment; Bureau of Labor Statistics
Data seasonally adjusted

Majority of Colorado Industries Shed Jobs in March on a Seasonally Adjusted Basis



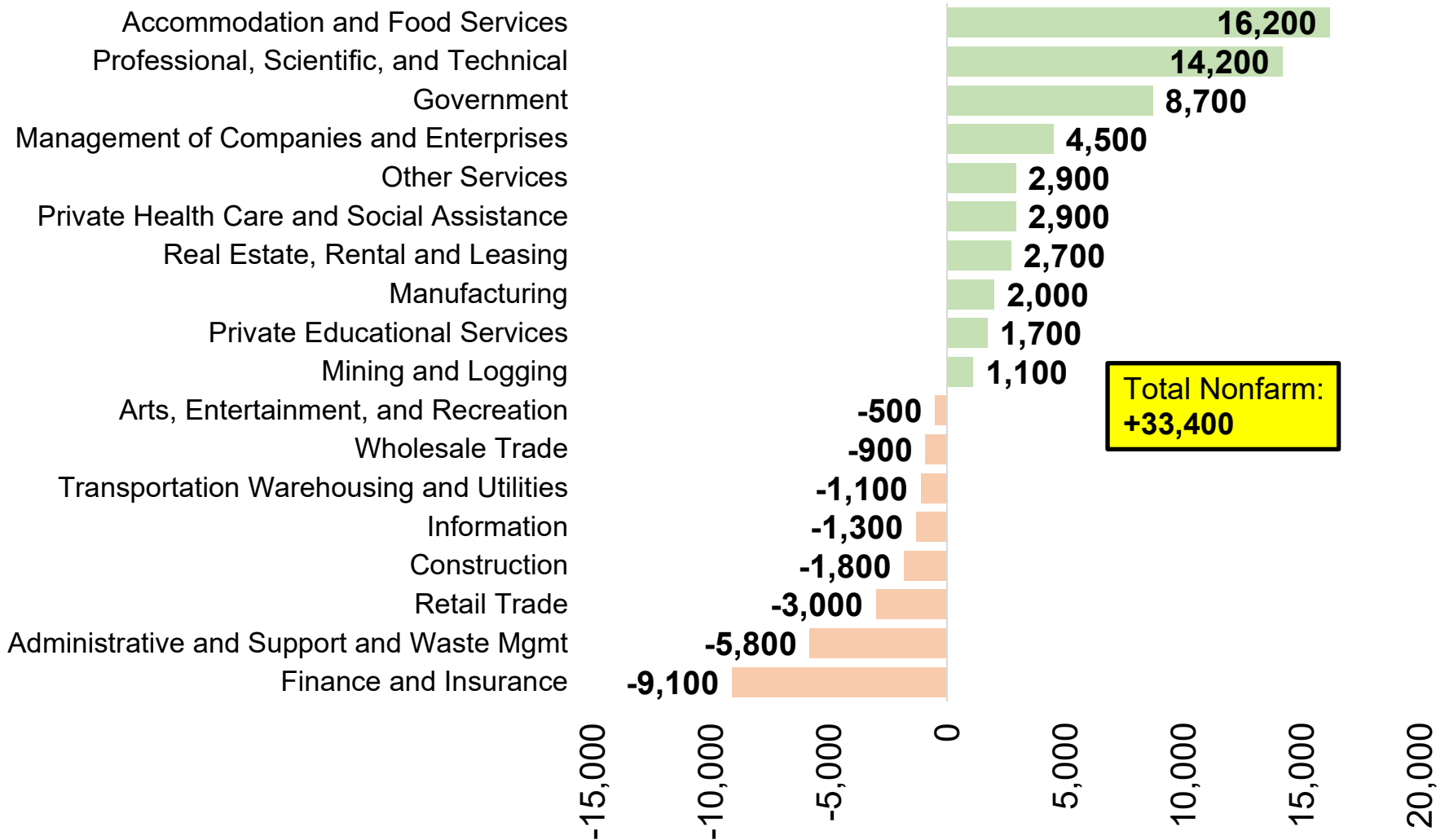
Source: Colorado Department of Labor and Employment; Bureau of Labor Statistics
Data seasonally adjusted

Change in Payroll Jobs in March 2023, by Industry Sector



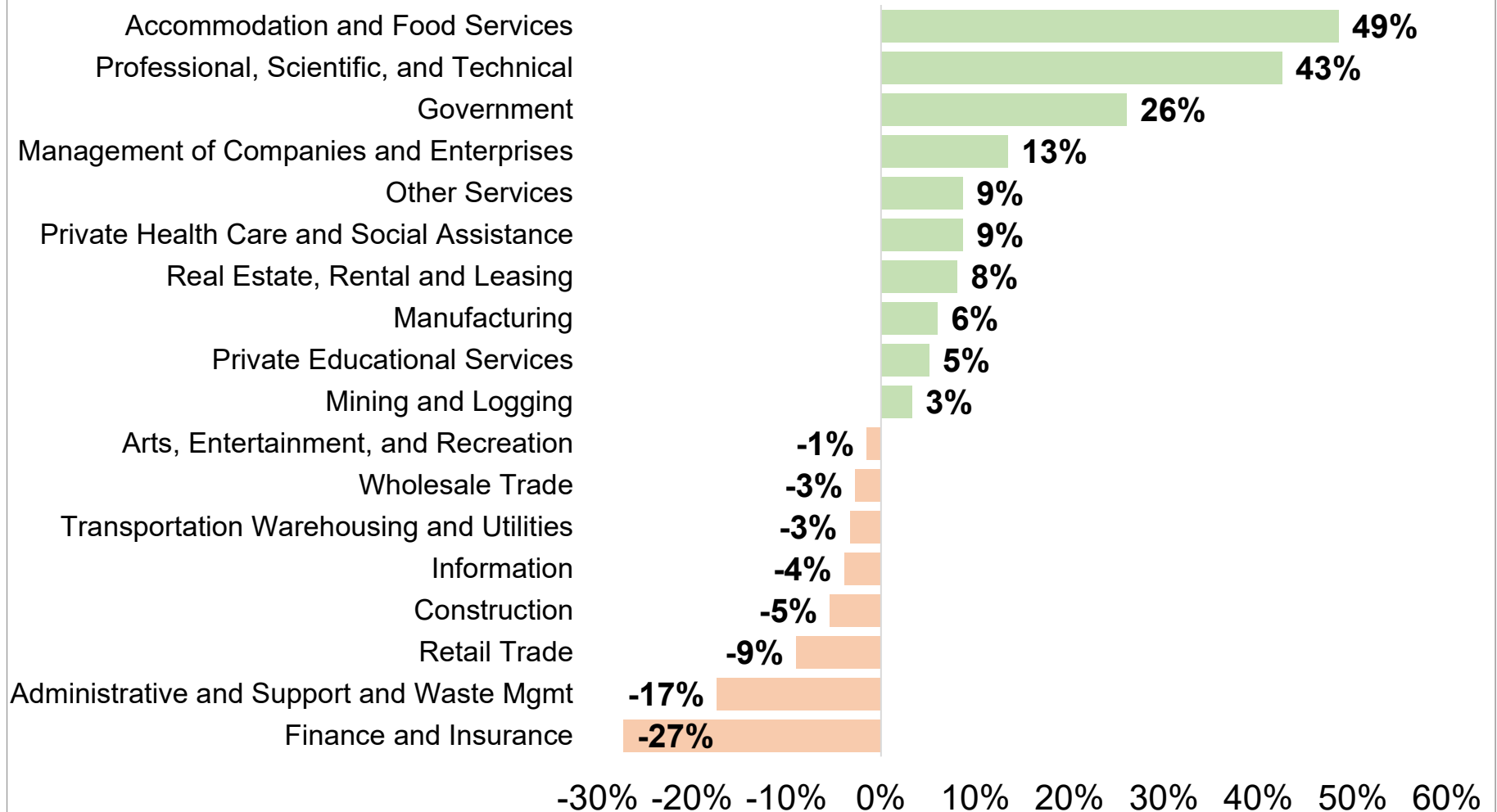
Source: Colorado Department of Labor and Employment; Bureau of Labor Statistics
Data seasonally adjusted, February 2023 to March 2023

Change in Payroll Jobs Over Past 12 Months, by Industry Sector



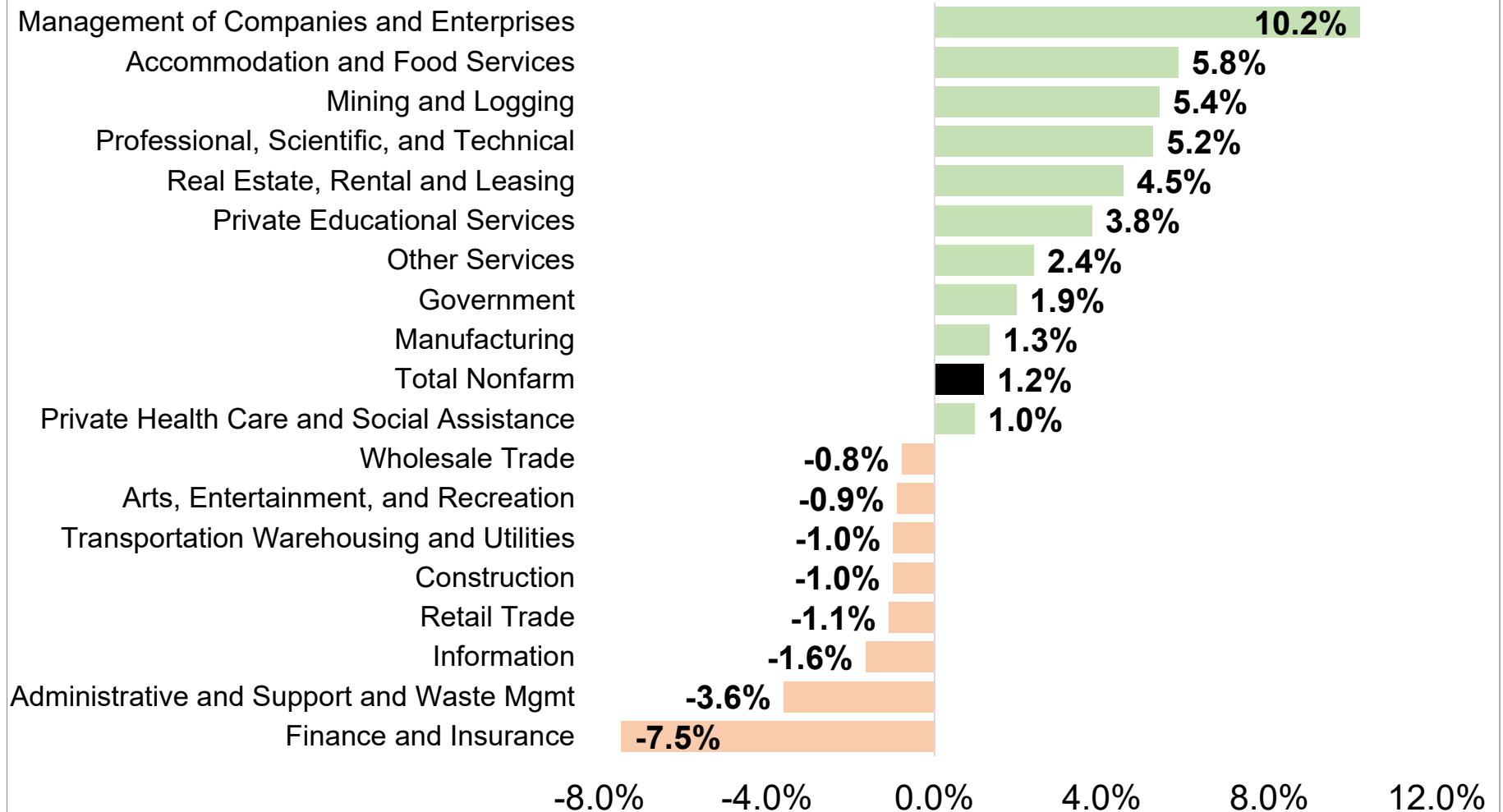
Source: Colorado Department of Labor and Employment; Bureau of Labor Statistics
Data seasonally adjusted, March 2022 to March 2023

Percent Contribution to Total Colorado Nonfarm Payroll Jobs Added Over Past 12 Months, by Industry Sector



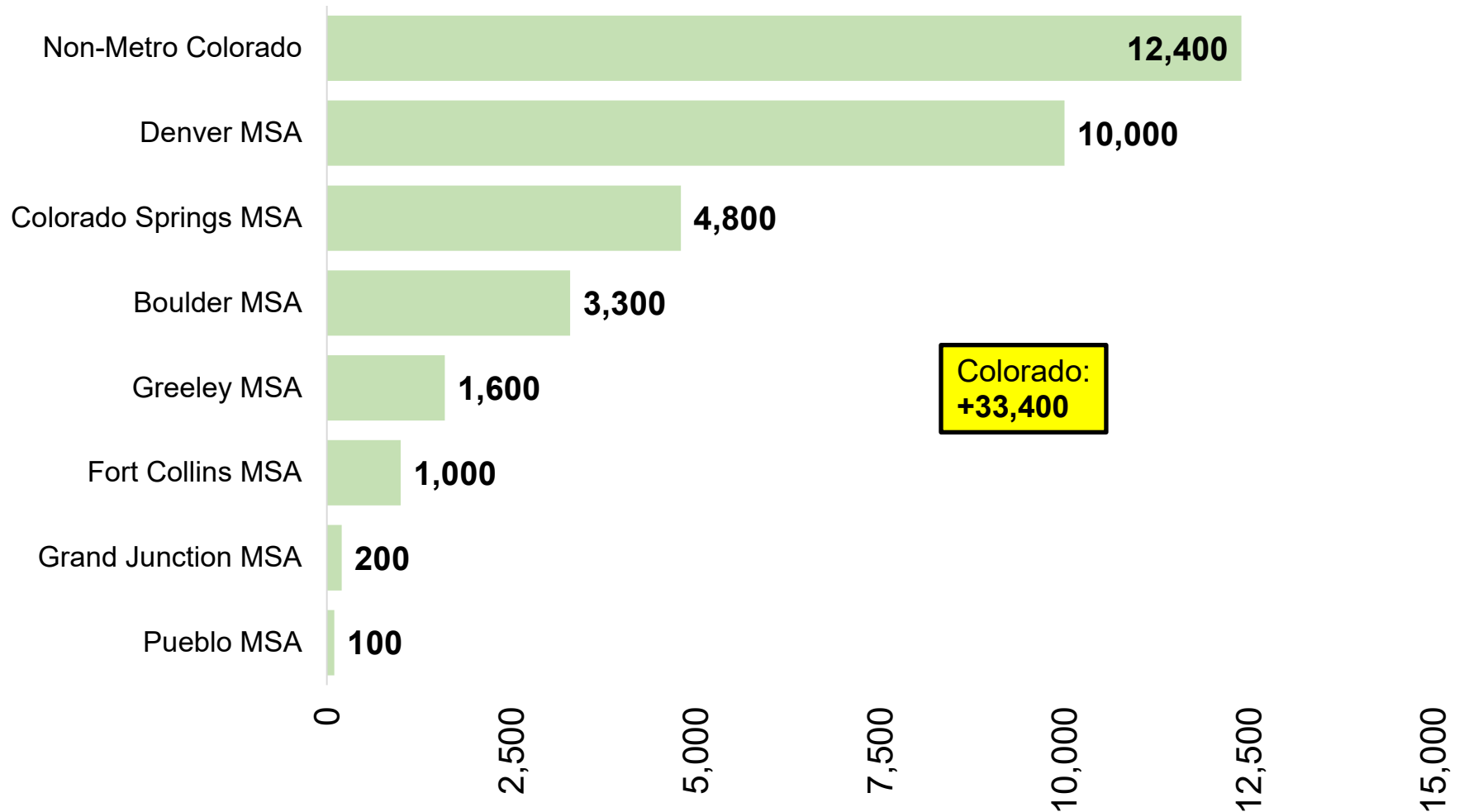
Source: Colorado Department of Labor and Employment; Bureau of Labor Statistics
 Data seasonally adjusted, March 2022 to March 2023

March 2023 Over the Year Growth Rates, by Industry Sector



Source: Colorado Department of Labor and Employment; Bureau of Labor Statistics
Data seasonally adjusted, March 2022 to March 2023

Change in Payroll Jobs Over Past 12 Months, by Colorado Substate Area

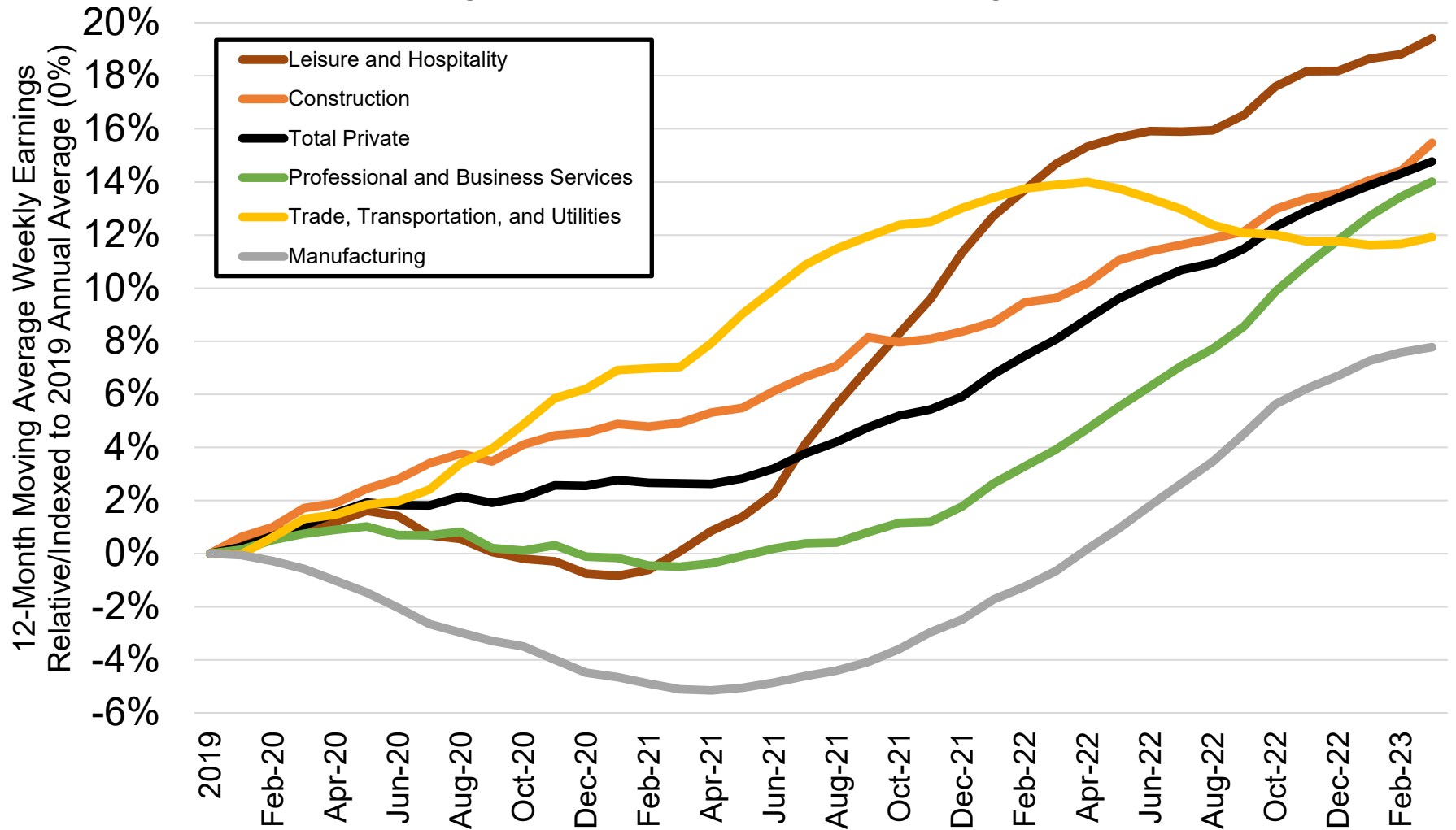


Source: Colorado Department of Labor and Employment; Bureau of Labor Statistics

Data seasonally adjusted, March 2022 to March 2023

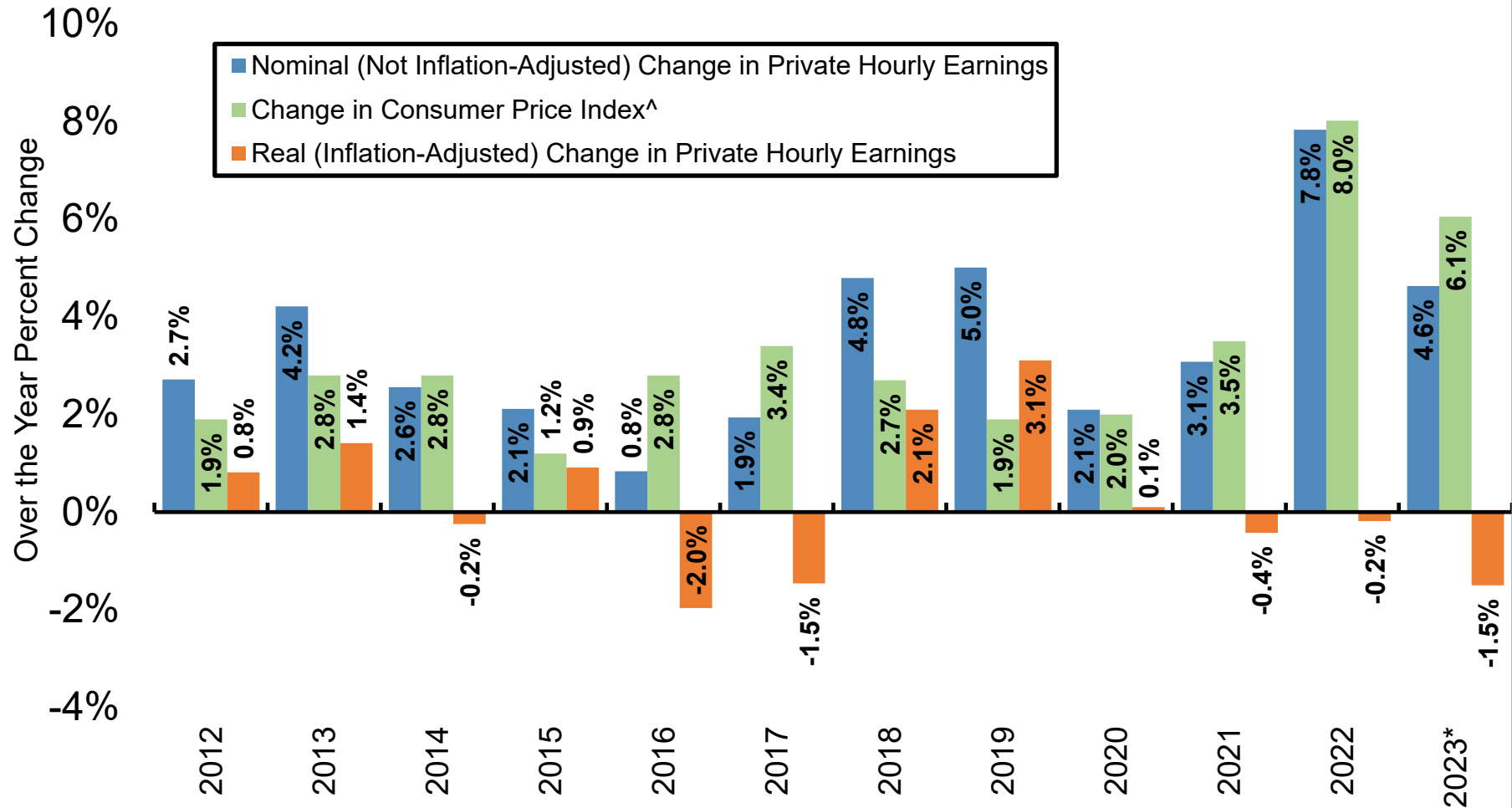
Note: MSA = Metropolitan Statistical Area; Non-Metro Colorado = residual of state that is not an MSA (47 counties)

Percent Change in Average Weekly Earnings Since 2019, by Select Colorado Industry



Source: Colorado Department of Labor and Employment; Bureau of Labor Statistics
 Data not seasonally adjusted. Note: each month on this chart represents a 12-month moving average and measures the percent change in average weekly earnings compared to the 2019 annual average for that industry.

Nominal and Real Percent Change in Colorado's Private Average Hourly Earnings Since 2012

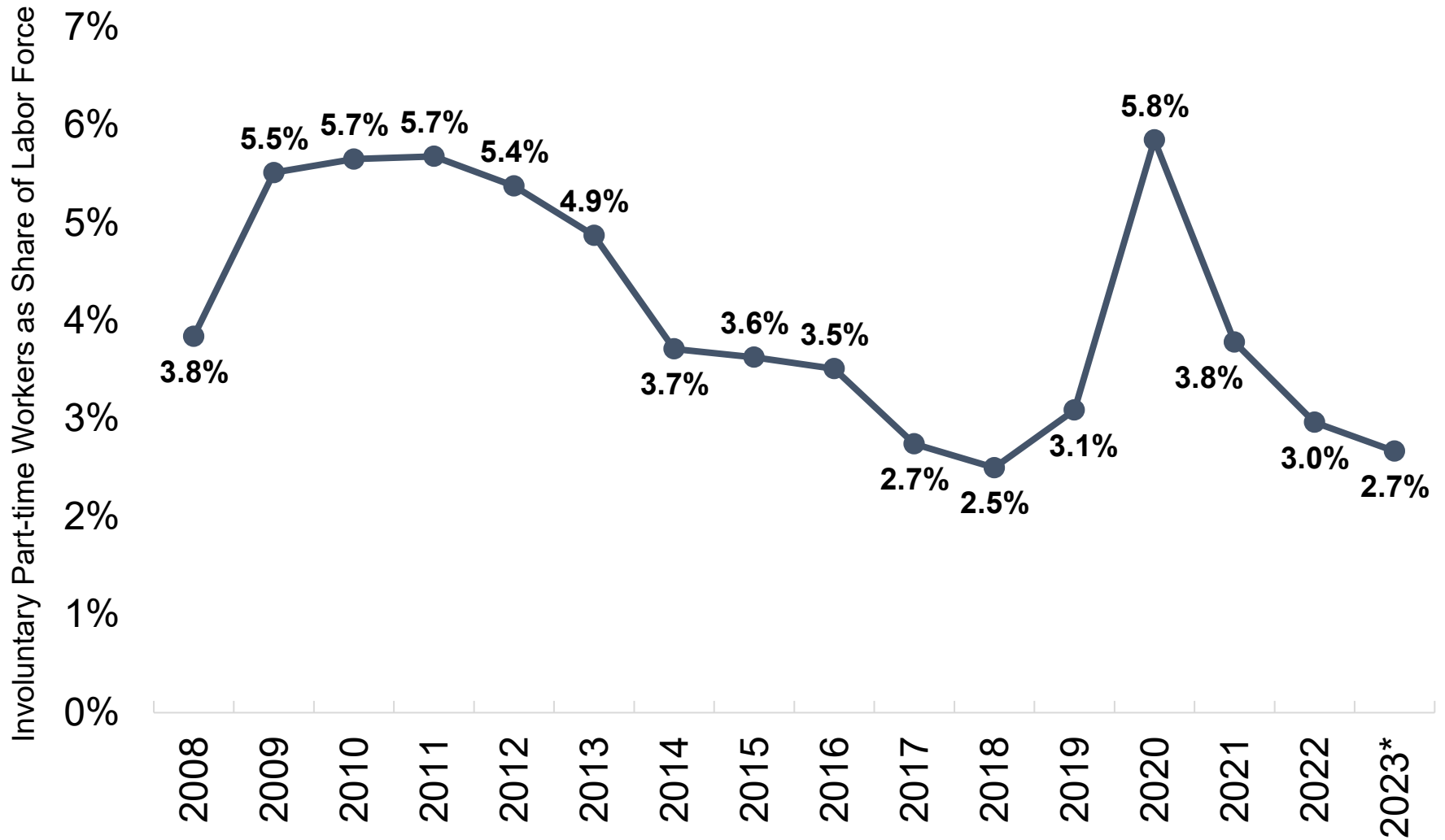


Source: Colorado Department of Labor and Employment estimates; Bureau of Labor Statistics

[^]Note: Denver-Aurora-Lakewood CPI-U estimates were utilized to adjust average hourly earnings for inflation.

That data is available here: <https://www.bls.gov/cpi/regional-resources.htm>. *2023 nominal earnings growth is measured using data for January to March compared to the same period the year prior, while real earnings were adjusted using the average over-the-year change in CPI-U for January and March 2023.

Involuntary Part-Time Workers as Share of Labor Force



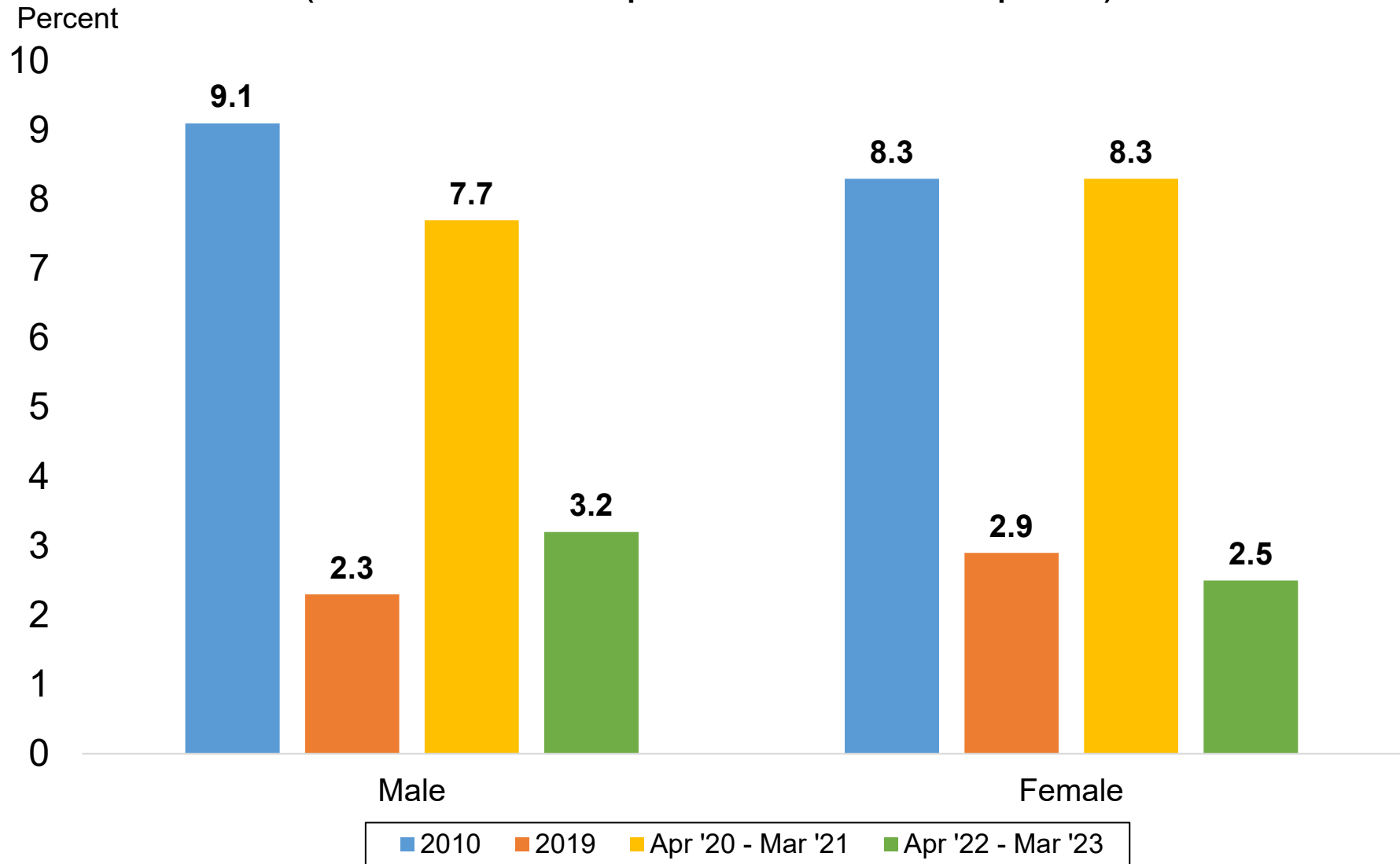
Source: Current Population Survey

Data not seasonally adjusted. Involuntary part-time workers are those individuals who are working part-time hours (34 hours or less), but prefer full-time hours (35+ hours).

*Average through the first three months of 2023.

Unemployment Rates by Gender

(Most recent 12-month period available vs. select periods)

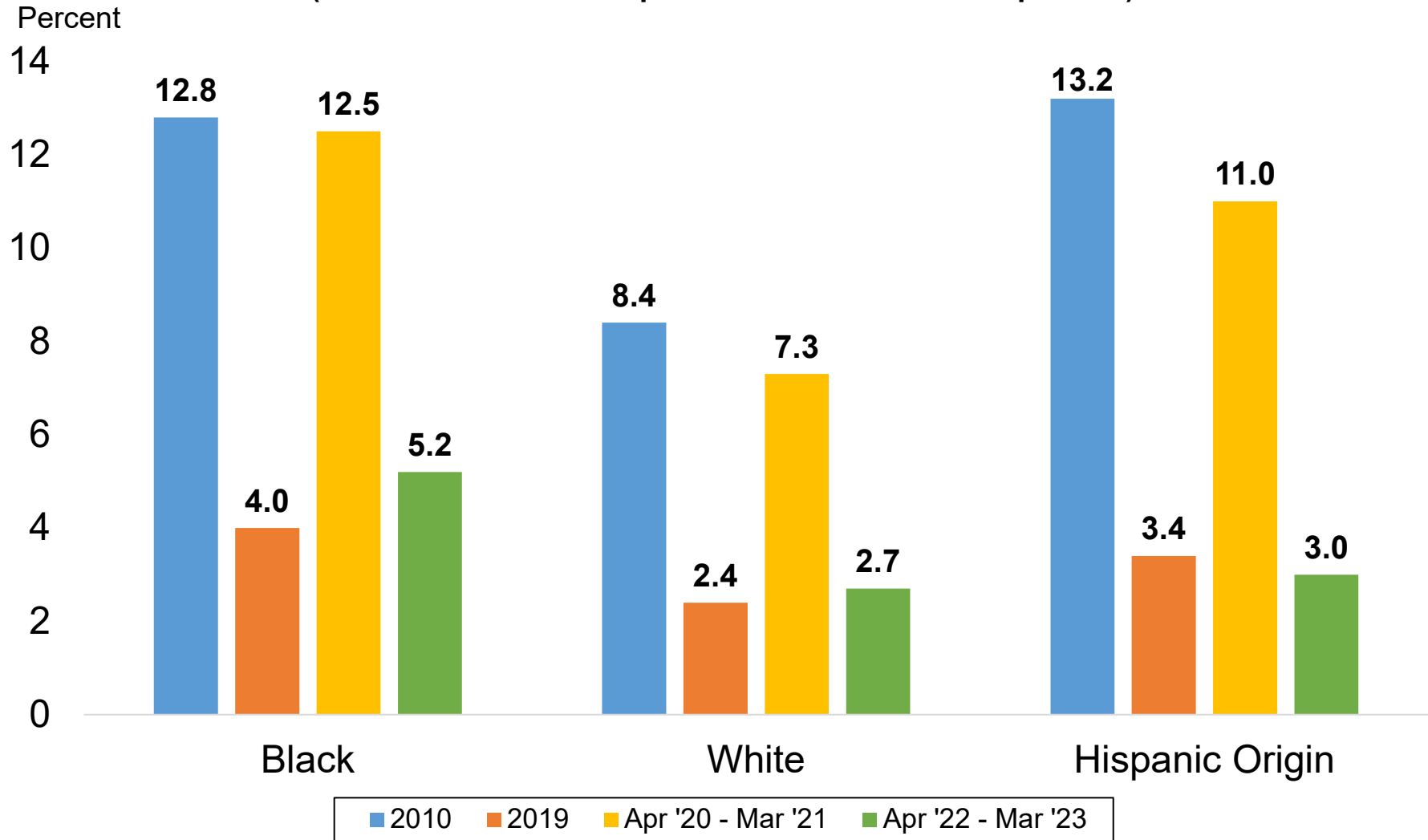


Source: Current Population Survey

Data not seasonally adjusted. Unemployment rates by gender for individuals 16 years and older.

Unemployment Rates by Race & Ethnicity

(Most recent 12-month period available vs. select periods)

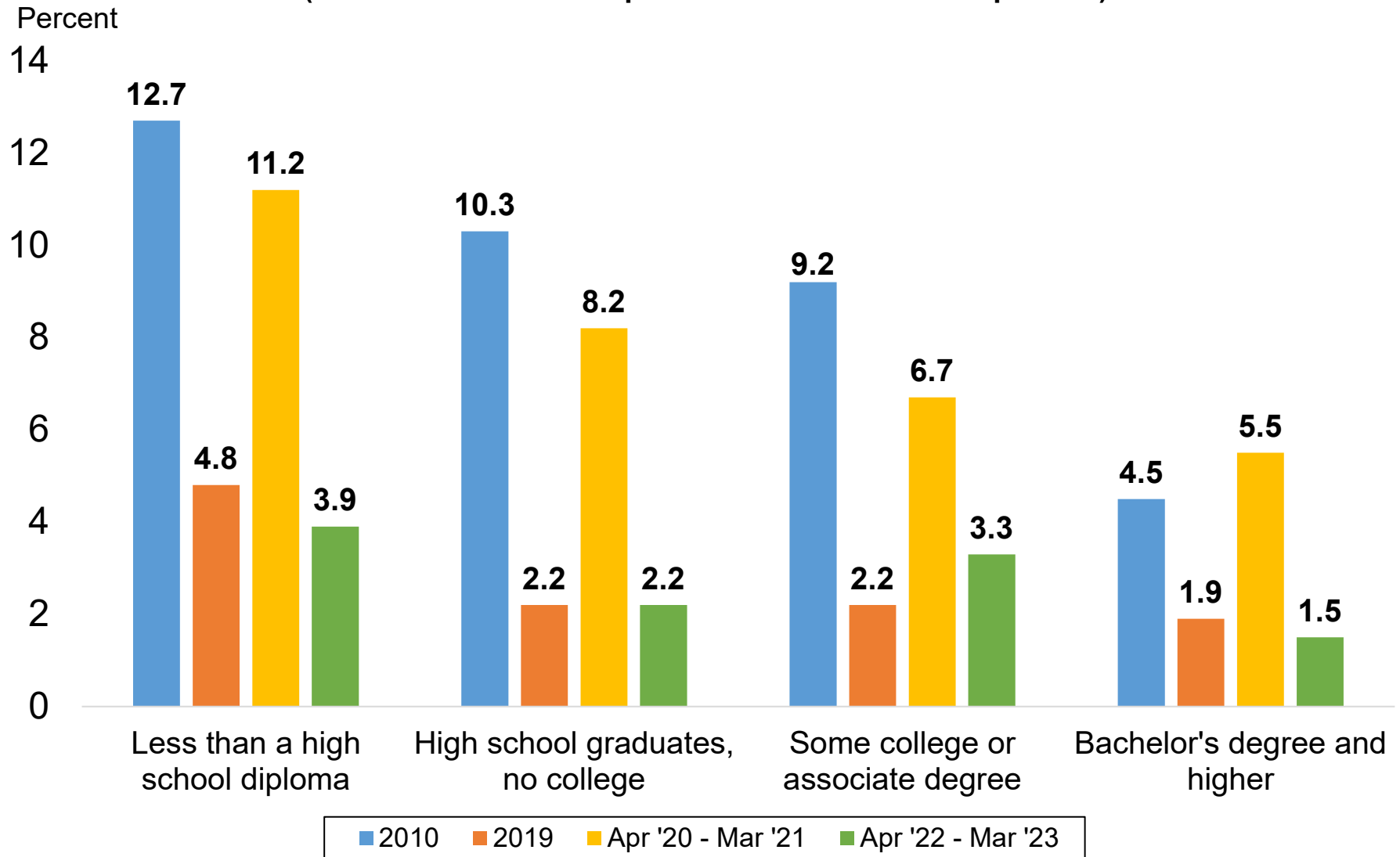


Source: Current Population Survey

Data not seasonally adjusted. Other race categories excluded due to small sample size. Hispanic origin category is not mutually exclusive (i.e. hispanic and non-hispanic ethnicities are represented in both race categories).

Unemployment Rates by Educational Attainment

(Most recent 12-month period available vs. select periods)

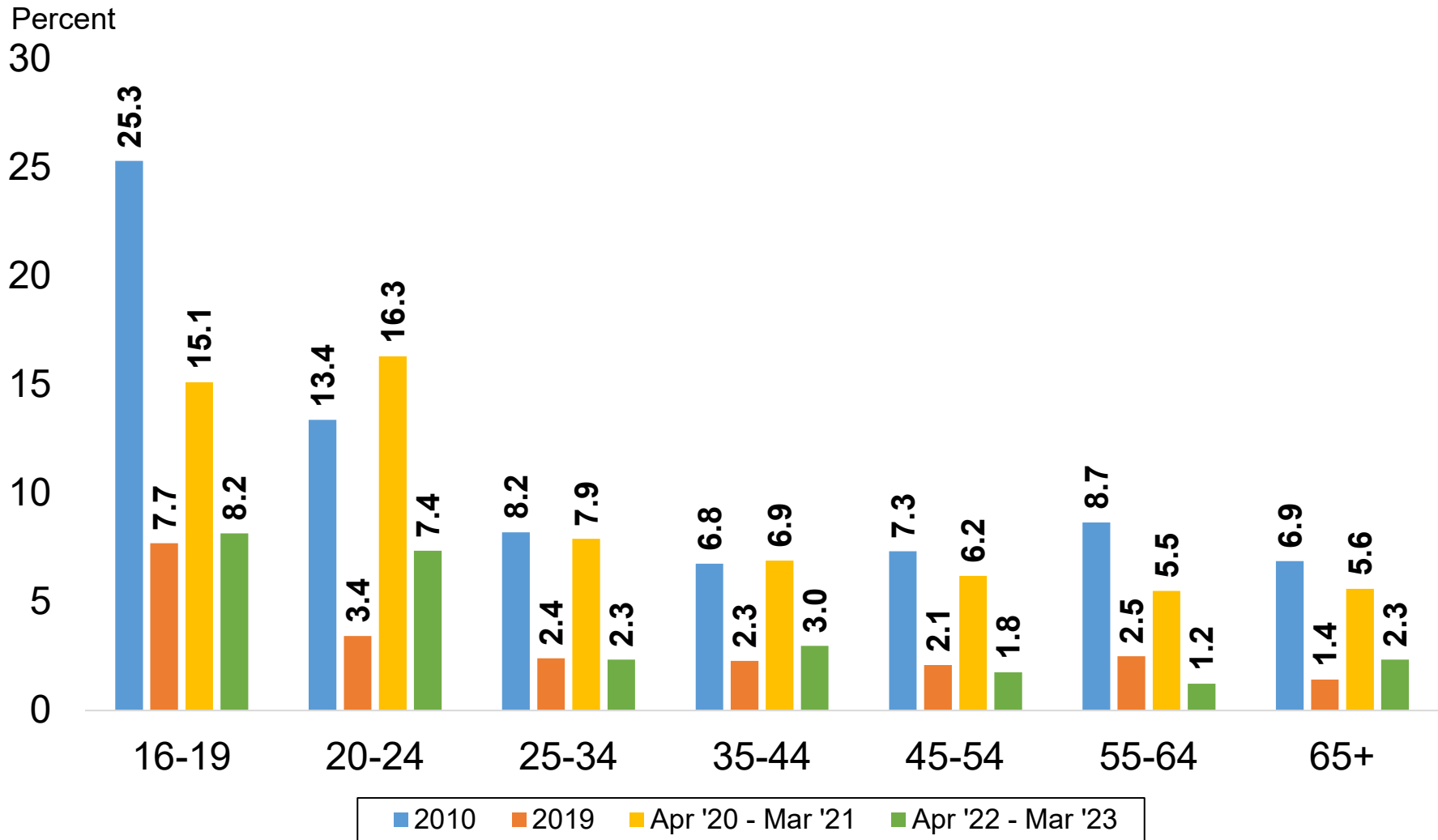


Source: Current Population Survey

Data not seasonally adjusted. Unemployment rates by educational attainment for individuals 25 years and over.

Unemployment Rates by Age Group

(Most recent 12-month period available vs. select periods)



Source: Current Population Survey
Data not seasonally adjusted.

Colorado Labor Force Participation Rates and Employment-to-Population Ratios, Ages 25 to 54

(Most recent 12-month period available vs. select years)

Percent

88

86

84

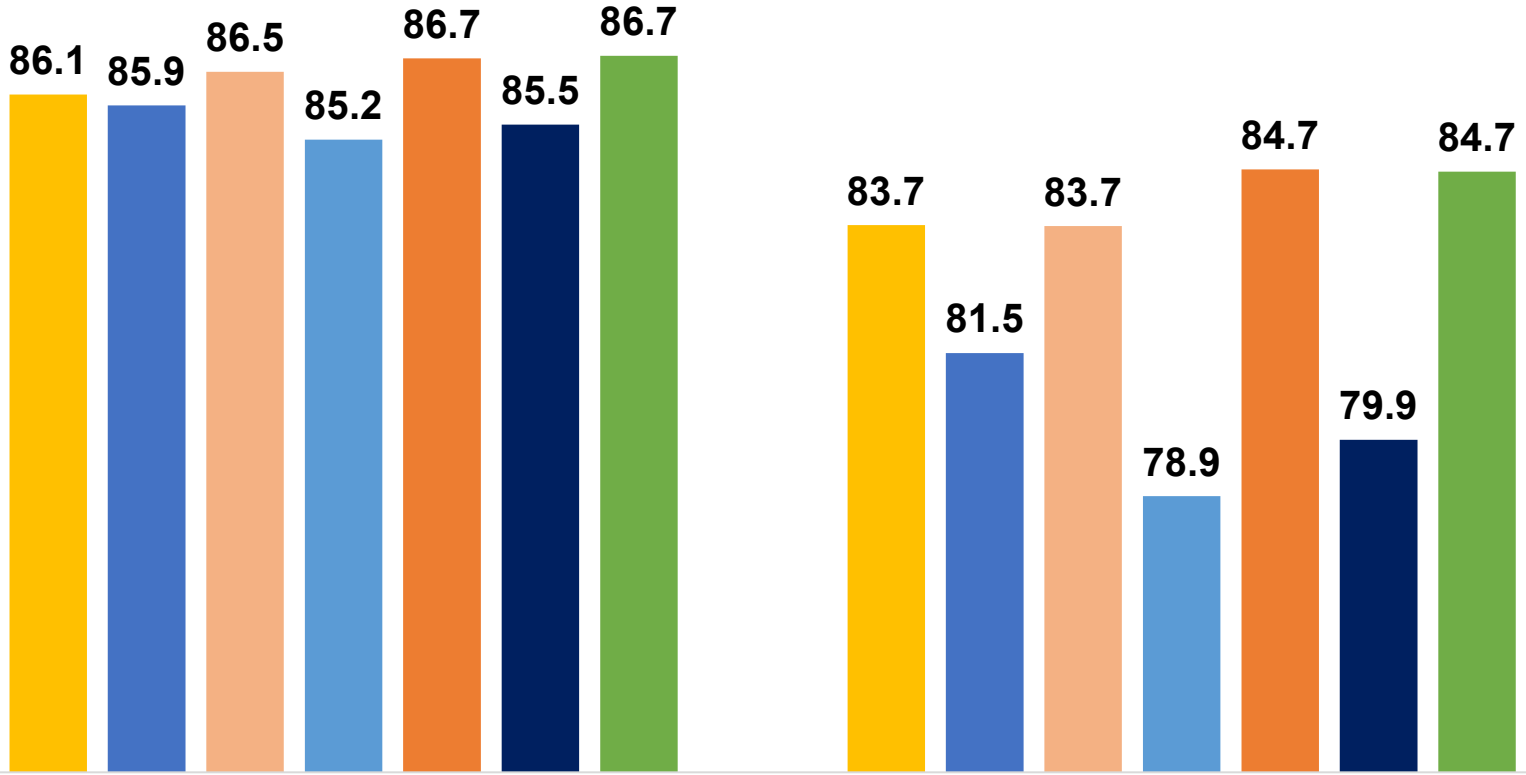
82

80

78

76

74



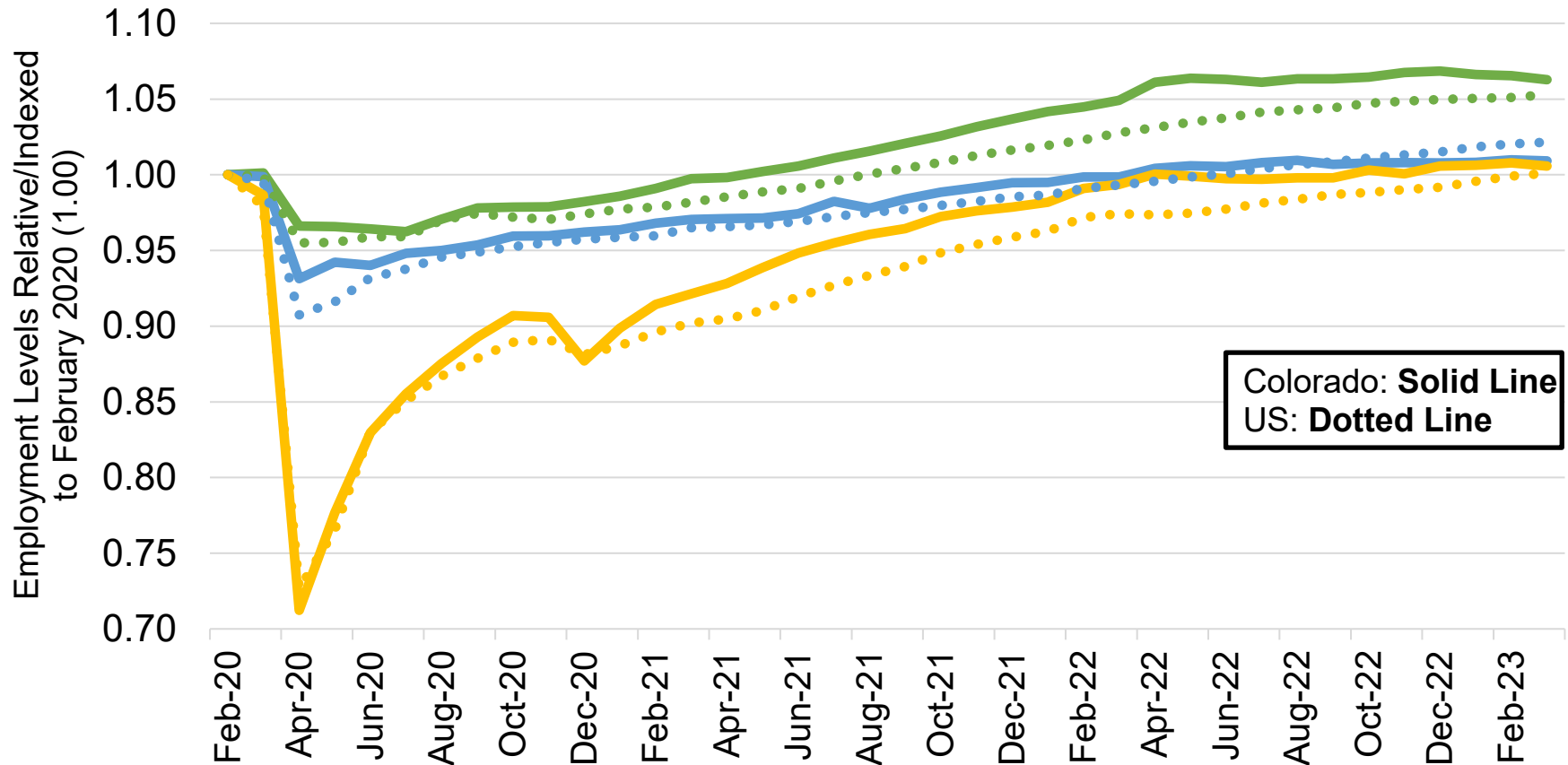
Labor Force Participation Rate

Employment-to-Population Ratio

■ 2001
 ■ 2003
 ■ 2006
 ■ 2010
 ■ 2019
 ■ 2020
 ■ Apr '22 - Mar '23

Source: Current Population Survey
Data not seasonally adjusted.

Job Loss and Recovery by Low, Medium, and High Wage Industries (Colorado & U.S.)



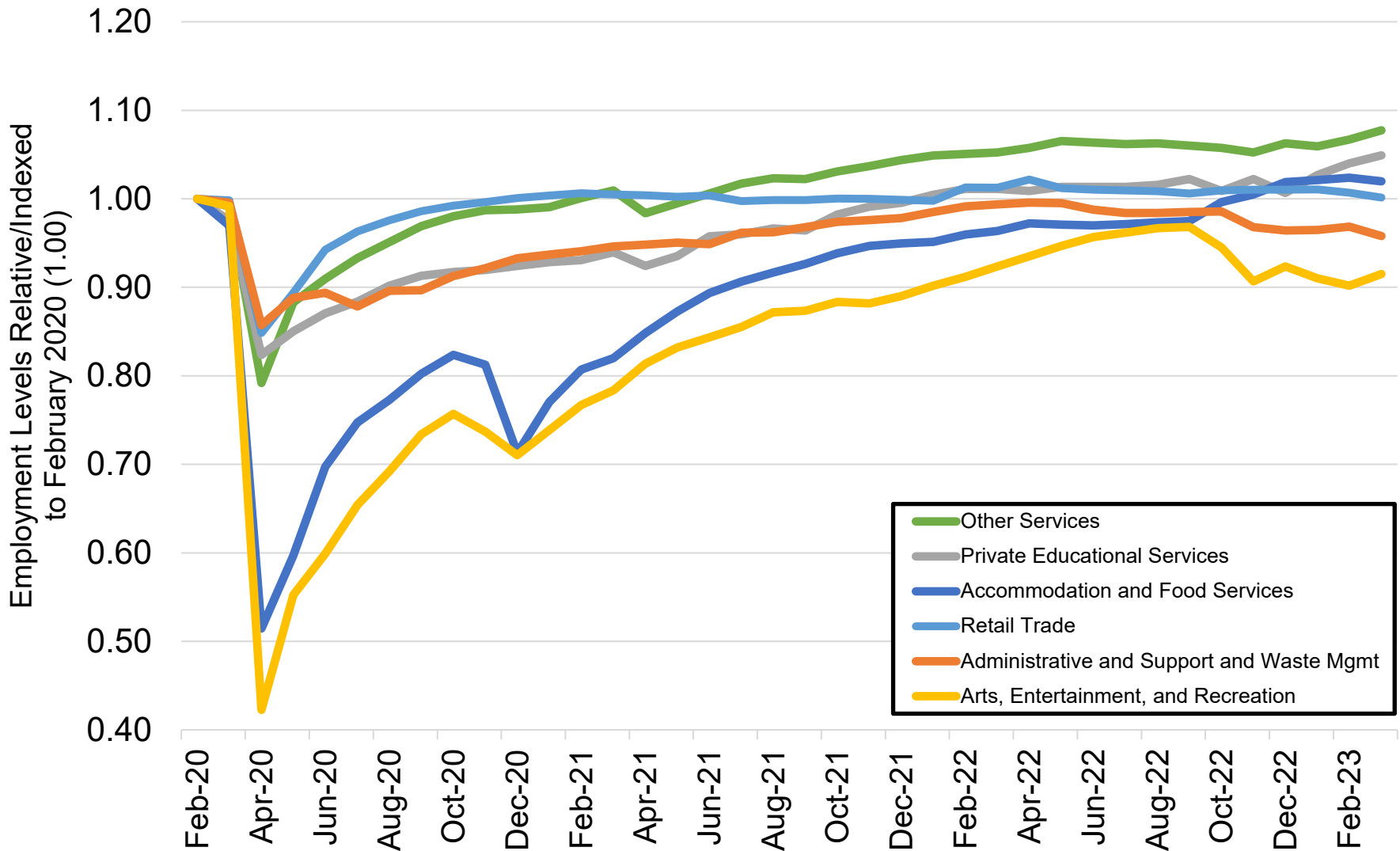
Colorado: **Solid Line**
US: **Dotted Line**

Source: Colorado Department of Labor and Employment; Bureau of Labor Statistics

Data seasonally adjusted. Note: low, medium, and high wage industries are determined by the 2019 state-level average weekly wage estimates from the Quarterly Census of Employment and Wages. **Low wage industries include:** retail trade; admin support/waste mgmt; private education services; arts, entertainment, and recreation; accommodation and food services; and other services. **Medium wage industries include:** construction; manufacturing; transportation, warehousing, and utilities; real estate, rental, and leasing; private health care and social assistance; state government; and local government.

High wage industries include: mining and logging; wholesale trade; information; finance and insurance; professional and technical services; management of companies; and federal government.

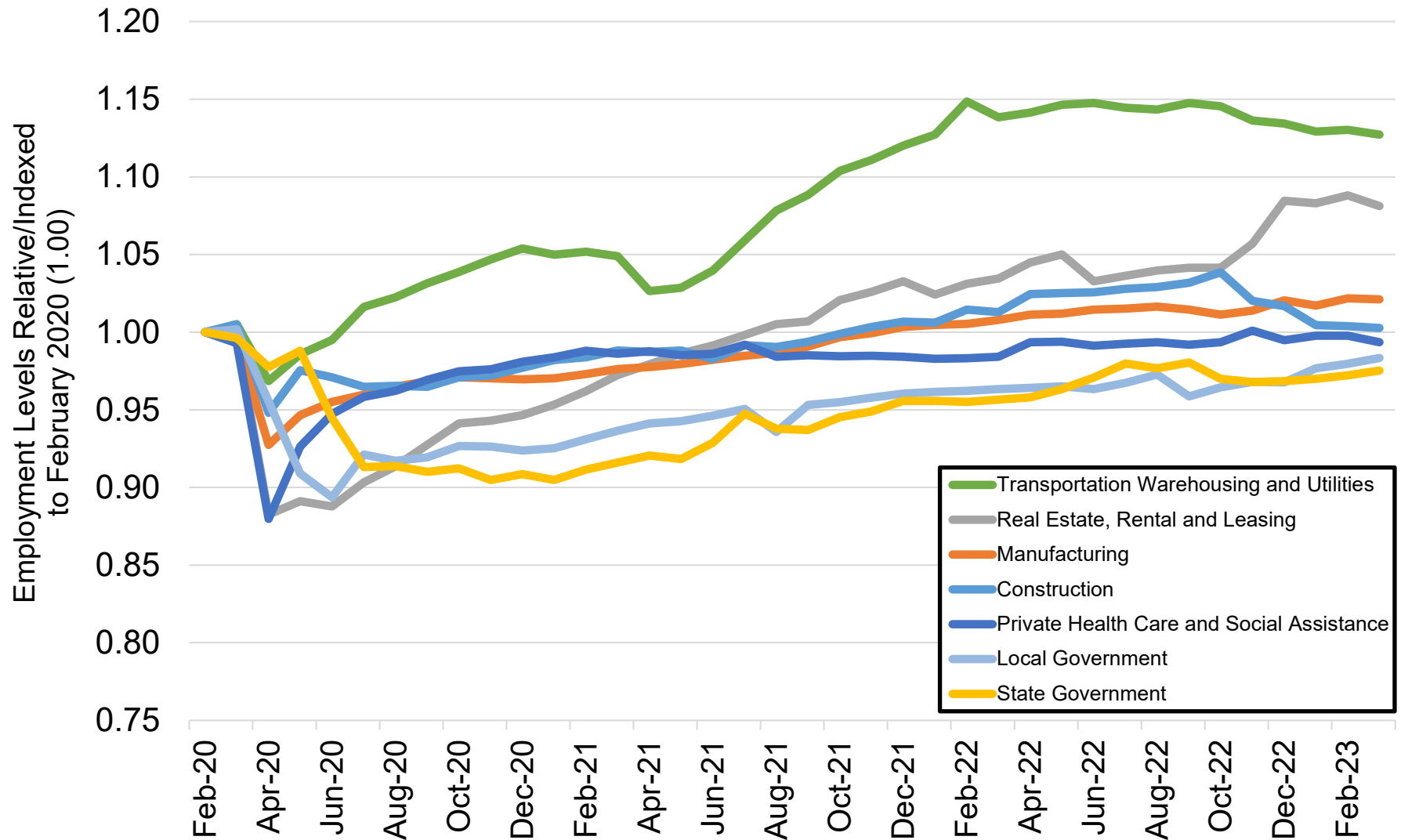
Colorado Job Loss & Recovery by Low Wage Industries



Source: Colorado Department of Labor and Employment; Bureau of Labor Statistics

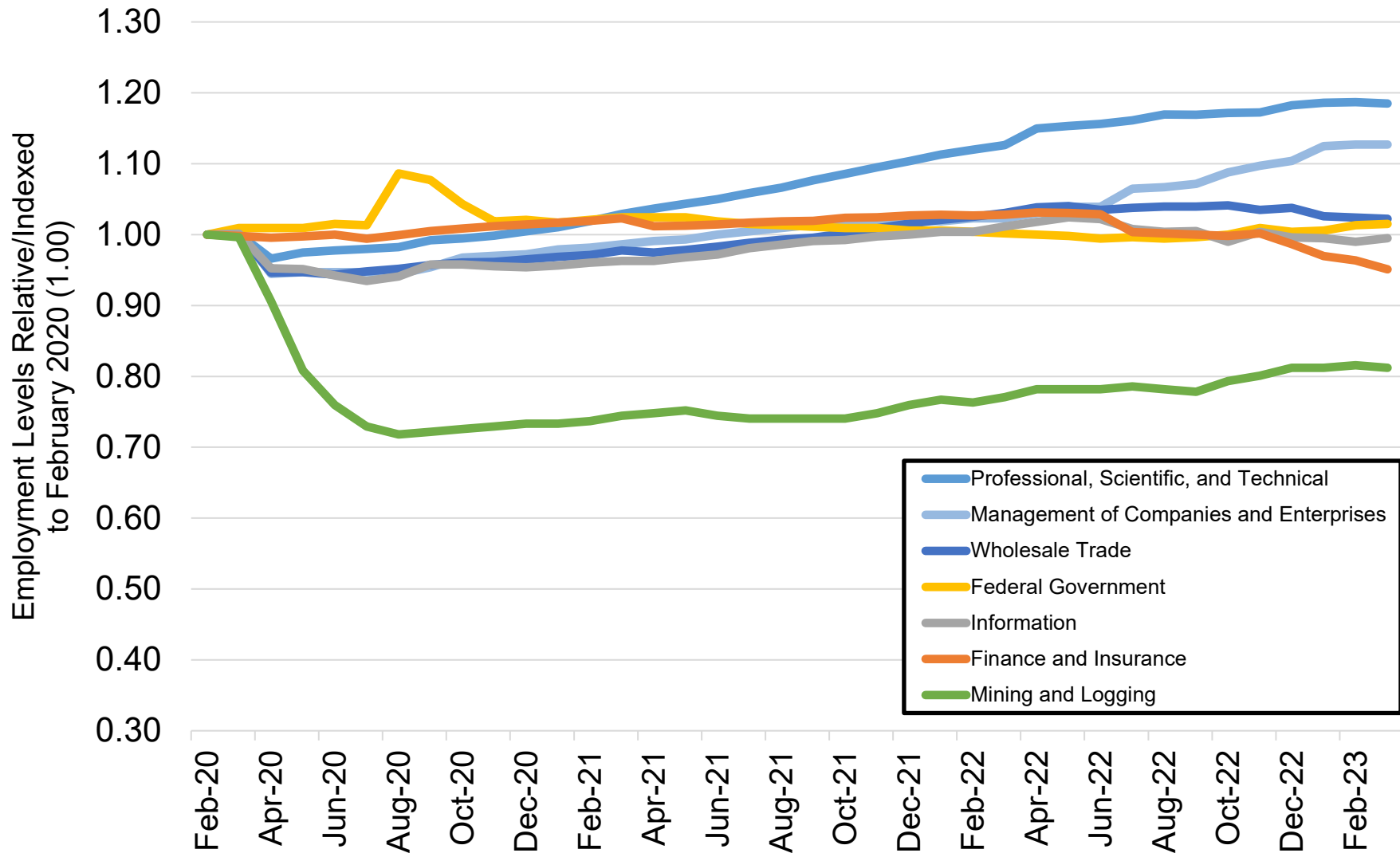
Data seasonally adjusted. Note: low wage industries are determined by the 2019 state-level average weekly wage estimates from the Quarterly Census of Employment and Wages.

Colorado Job Loss & Recovery by Medium Wage Industries



Source: Colorado Department of Labor and Employment; Bureau of Labor Statistics
 Data seasonally adjusted. Note: medium wage industries are determined by the 2019 state-level average weekly wage estimates from the Quarterly Census of Employment and Wages.

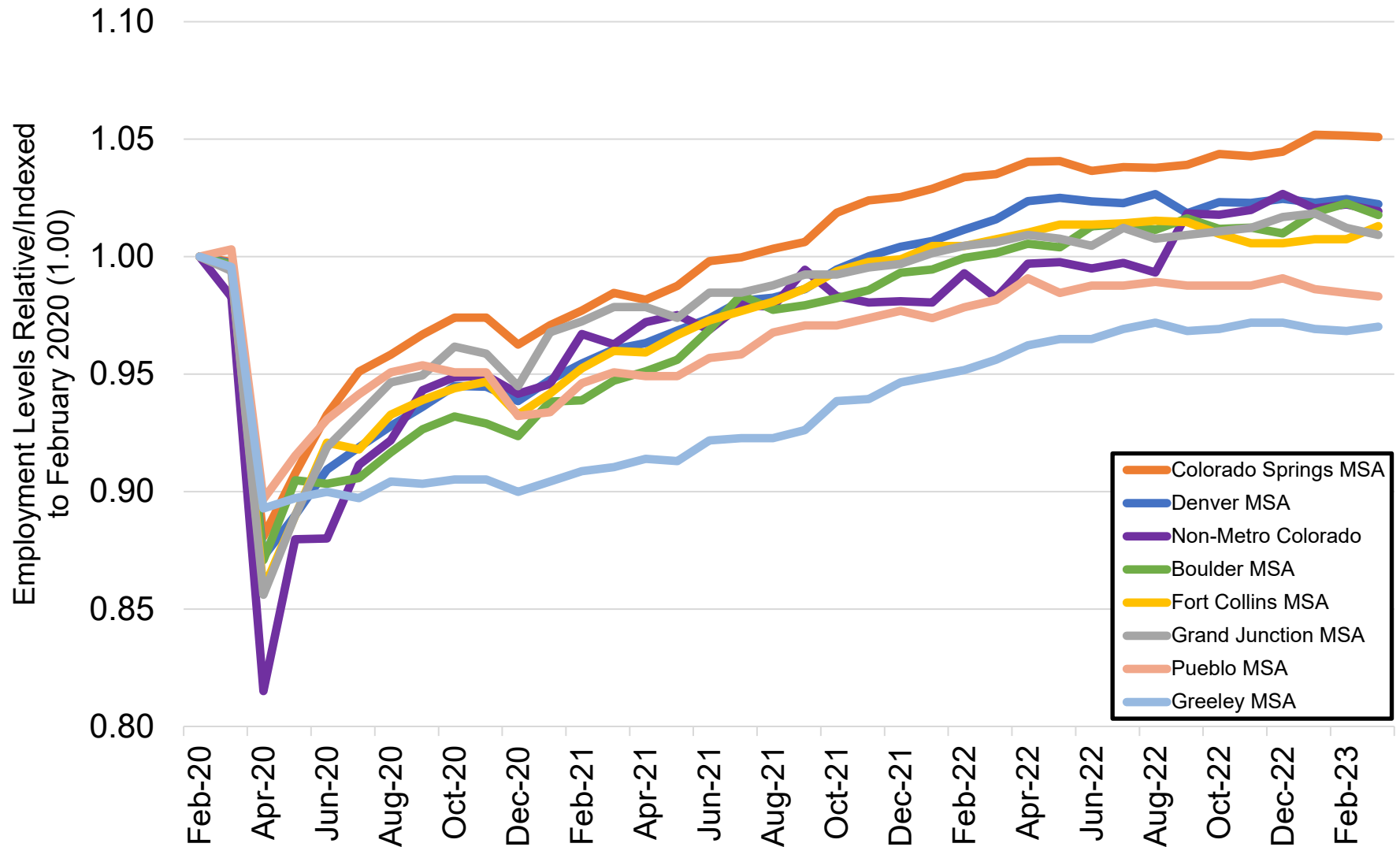
Colorado Job Loss & Recovery by High Wage Industries



Source: Colorado Department of Labor and Employment; Bureau of Labor Statistics

Data seasonally adjusted. Note: high wage industries are determined by the 2019 state-level average weekly wage estimates from the Quarterly Census of Employment and Wages.

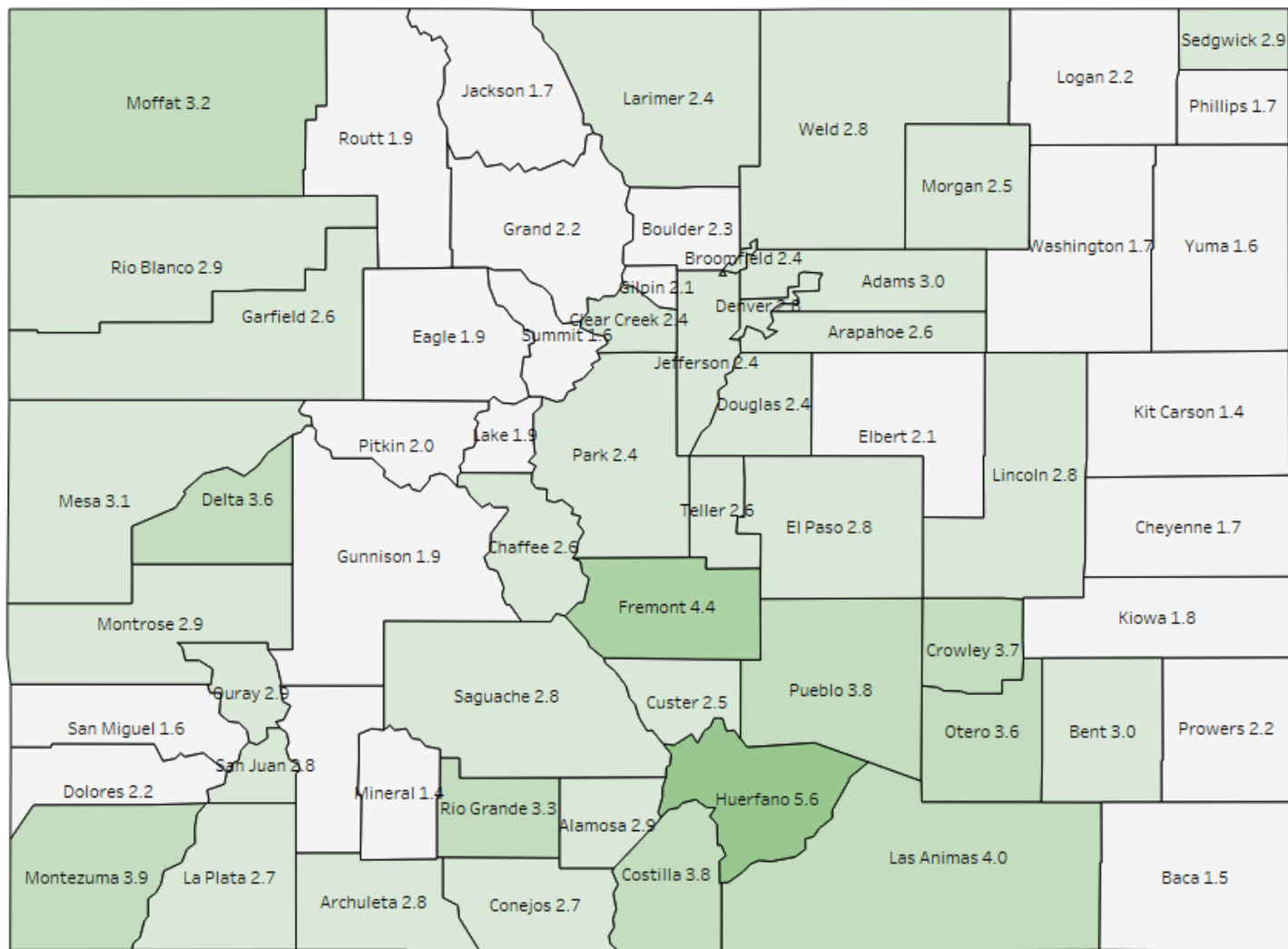
Colorado Job Loss & Recovery by Colorado Substate Area



Source: Colorado Department of Labor and Employment; Bureau of Labor Statistics

Data seasonally adjusted. Note: MSA = Metropolitan Statistical Area; Non-Metro Colorado = residual of state that is not an MSA (47 counties).

County Unemployment Rates March 2023



LABOR FORCE SUMMARY
COLORADO

Preliminary Estimates for March 2023

| LABOR FORCE DATA (VALUES IN THOUSANDS) | | | | | |
|---|---------------|---------------|---------------|--------------------------|-------------|
| SEASONALLY ADJUSTED: | | | | Change from last: | |
| | Mar-23 | Feb-23 | Mar-22 | Month | Year |
| Total Civilian Labor Force | 3,227.3 | 3,217.1 | 3,204.9 | 10.3 | 22.5 |
| Unemployment | 91.0 | 92.7 | 104.8 | -1.7 | -13.8 |
| Unemployment Rate (%) | 2.8 | 2.9 | 3.3 | -0.1 | -0.5 |
| Employment | 3,136.3 | 3,124.4 | 3,100.1 | 11.9 | 36.2 |
| UNADJUSTED FOR SEASONALITY: | | | | Change from last: | |
| | Mar-23 | Feb-23 | Mar-22 | Month | Year |
| Total Civilian Labor Force | 3,232.4 | 3,243.7 | 3,195.6 | -11.2 | 36.9 |
| Unemployment | 86.4 | 105.2 | 108.1 | -18.8 | -21.8 |
| Unemployment Rate (%) | 2.7 | 3.2 | 3.4 | -0.5 | -0.7 |
| Employment | 3,146.1 | 3,138.5 | 3,087.4 | 7.6 | 58.6 |

| WAGE AND SALARY EMPLOYMENT DATA (VALUES IN THOUSANDS) | | | | | |
|--|---------------|---------------|---------------|--------------------------|-------------|
| SEASONALLY ADJUSTED: | | | | Change from last: | |
| | Mar-23 | Feb-23 | Mar-22 | Month | Year |
| Mining & Logging | 21.6 | 21.7 | 20.5 | -0.1 | 1.1 |
| Construction | 179.5 | 179.7 | 181.3 | -0.2 | -1.8 |
| Manufacturing | 154.7 | 154.8 | 152.7 | -0.1 | 2.0 |
| Trade, Transportation, & Utilities | 496.3 | 498.3 | 501.3 | -2.0 | -5.0 |
| Information | 77.6 | 77.2 | 78.9 | 0.4 | -1.3 |
| Financial Activities | 175.2 | 177.1 | 181.6 | -1.9 | -6.4 |
| Professional & Business Services | 490.4 | 492.6 | 477.5 | -2.2 | 12.9 |
| Educational & Health Services | 354.3 | 355.2 | 349.7 | -0.9 | 4.6 |
| Leisure & Hospitality | 349.9 | 350.3 | 334.2 | -0.4 | 15.7 |
| Other Services | 125.3 | 124.1 | 122.4 | 1.2 | 2.9 |
| Government | 455.0 | 453.5 | 446.3 | 1.5 | 8.7 |
| TOTAL NONAG | 2,879.8 | 2,884.5 | 2,846.4 | -4.7 | 33.4 |
| Labor Disputants | 0.0 | 0.0 | 0.0 | 0.0 | 0.0 |
| UNADJUSTED FOR SEASONALITY: | | | | Change from last: | |
| | Mar-23 | Feb-23 | Mar-22 | Month | Year |
| Mining & Logging | 21.4 | 21.3 | 20.2 | 0.1 | 1.2 |
| Construction | 174.4 | 173.5 | 176.3 | 0.9 | -1.9 |
| Manufacturing | 154.4 | 154.5 | 152.3 | -0.1 | 2.1 |
| Trade, Transportation, & Utilities | 493.3 | 498.1 | 497.8 | -4.8 | -4.5 |
| Information | 77.3 | 76.7 | 78.9 | 0.6 | -1.6 |
| Financial Activities | 173.8 | 176.3 | 181.0 | -2.5 | -7.2 |
| Professional & Business Services | 484.8 | 487.3 | 470.1 | -2.5 | 14.7 |
| Educational & Health Services | 354.6 | 355.7 | 350.4 | -1.1 | 4.2 |
| Leisure & Hospitality | 348.4 | 345.6 | 330.0 | 2.8 | 18.4 |
| Other Services | 124.9 | 122.7 | 120.8 | 2.2 | 4.1 |
| Government | 458.1 | 454.0 | 449.9 | 4.1 | 8.2 |
| TOTAL NONAG | 2,865.4 | 2,865.7 | 2,827.7 | -0.3 | 37.7 |
| Labor Disputants | 0.0 | 0.0 | 0.0 | 0.0 | 0.0 |

Source: Colorado Department of Labor & Employment; Bureau of Labor Statistics

Not Seasonally Adjusted Labor Force

| | March 2023 | | | | February 2023 | | | |
|--------------------------------------|-------------|------------|--------------|------|---------------|------------|--------------|------|
| | Labor Force | Employment | Unemployment | Rate | Labor force | Employment | Unemployment | Rate |
| Colorado | 3,232,419 | 3,146,052 | 86,367 | 2.7 | 3,243,663 | 3,138,465 | 105,198 | 3.2 |
| Metropolitan Statistical Area | | | | | | | | |
| Boulder | 204,713 | 199,992 | 4,721 | 2.3 | 206,252 | 200,583 | 5,669 | 2.7 |
| Colorado Springs | 377,865 | 367,238 | 10,627 | 2.8 | 379,580 | 366,640 | 12,940 | 3.4 |
| Denver-Aurora-Lakewood | 1,734,903 | 1,688,891 | 46,012 | 2.7 | 1,743,820 | 1,688,019 | 55,801 | 3.2 |
| Fort Collins | 211,852 | 206,728 | 5,124 | 2.4 | 210,858 | 204,648 | 6,210 | 2.9 |
| Grand Junction | 77,198 | 74,802 | 2,396 | 3.1 | 77,707 | 74,728 | 2,979 | 3.8 |
| Greeley | 170,877 | 166,051 | 4,826 | 2.8 | 170,931 | 165,035 | 5,896 | 3.4 |
| Pueblo | 76,519 | 73,582 | 2,937 | 3.8 | 76,967 | 73,407 | 3,560 | 4.6 |
| Counties | | | | | | | | |
| Adams | 283,672 | 275,206 | 8,466 | 3.0 | 285,116 | 274,805 | 10,311 | 3.6 |
| Alamosa | 8,338 | 8,094 | 244 | 2.9 | 8,236 | 7,934 | 302 | 3.7 |
| Arapahoe | 377,130 | 367,139 | 9,991 | 2.6 | 379,089 | 367,052 | 12,037 | 3.2 |
| Archuleta | 6,949 | 6,753 | 196 | 2.8 | 6,954 | 6,715 | 239 | 3.4 |
| Baca | 2,057 | 2,027 | 30 | 1.5 | 2,009 | 1,967 | 42 | 2.1 |
| Bent | 1,790 | 1,736 | 54 | 3.0 | 1,759 | 1,696 | 63 | 3.6 |
| Boulder | 204,713 | 199,992 | 4,721 | 2.3 | 206,252 | 200,583 | 5,669 | 2.7 |
| Broomfield | 42,860 | 41,816 | 1,044 | 2.4 | 43,013 | 41,764 | 1,249 | 2.9 |
| Chaffee | 9,868 | 9,610 | 258 | 2.6 | 9,865 | 9,540 | 325 | 3.3 |
| Cheyenne | 1,017 | 1,000 | 17 | 1.7 | 1,005 | 979 | 26 | 2.6 |
| Clear Creek | 6,175 | 6,028 | 147 | 2.4 | 6,216 | 6,028 | 188 | 3.0 |
| Conejos | 4,031 | 3,921 | 110 | 2.7 | 3,961 | 3,829 | 132 | 3.3 |
| Costilla | 1,776 | 1,708 | 68 | 3.8 | 1,772 | 1,684 | 88 | 5.0 |
| Crowley | 1,393 | 1,341 | 52 | 3.7 | 1,390 | 1,324 | 66 | 4.7 |
| Custer | 2,326 | 2,267 | 59 | 2.5 | 2,324 | 2,249 | 75 | 3.2 |
| Delta | 12,996 | 12,534 | 462 | 3.6 | 12,921 | 12,348 | 573 | 4.4 |
| Denver | 439,184 | 426,829 | 12,355 | 2.8 | 441,615 | 426,677 | 14,938 | 3.4 |
| Dolores | 1,151 | 1,126 | 25 | 2.2 | 1,138 | 1,106 | 32 | 2.8 |
| Douglas | 209,450 | 204,483 | 4,967 | 2.4 | 210,314 | 204,353 | 5,961 | 2.8 |
| Eagle | 36,996 | 36,286 | 710 | 1.9 | 36,979 | 36,092 | 887 | 2.4 |
| El Paso | 364,289 | 354,014 | 10,275 | 2.8 | 365,898 | 353,399 | 12,499 | 3.4 |
| Elbert | 16,038 | 15,703 | 335 | 2.1 | 16,081 | 15,646 | 435 | 2.7 |
| Fremont | 14,146 | 13,529 | 617 | 4.4 | 14,176 | 13,404 | 772 | 5.4 |
| Garfield | 32,442 | 31,590 | 852 | 2.6 | 32,513 | 31,456 | 1,057 | 3.3 |
| Gilpin | 3,937 | 3,854 | 83 | 2.1 | 3,969 | 3,857 | 112 | 2.8 |
| Grand | 10,027 | 9,807 | 220 | 2.2 | 10,035 | 9,764 | 271 | 2.7 |
| Gunnison | 11,953 | 11,721 | 232 | 1.9 | 11,910 | 11,617 | 293 | 2.5 |
| Hinsdale | 389 | 381 | 8 | 2.1 | 386 | 373 | 13 | 3.4 |
| Huerfano | 2,382 | 2,249 | 133 | 5.6 | 2,405 | 2,239 | 166 | 6.9 |
| Jackson | 976 | 959 | 17 | 1.7 | 947 | 926 | 21 | 2.2 |
| Jefferson | 344,811 | 336,464 | 8,347 | 2.4 | 346,662 | 336,444 | 10,218 | 2.9 |
| Kiowa | 888 | 872 | 16 | 1.8 | 853 | 831 | 22 | 2.6 |
| Kit Carson | 4,222 | 4,161 | 61 | 1.4 | 4,151 | 4,070 | 81 | 2.0 |
| La Plata | 31,349 | 30,517 | 832 | 2.7 | 31,419 | 30,367 | 1,052 | 3.3 |
| Lake | 5,284 | 5,186 | 98 | 1.9 | 5,295 | 5,170 | 125 | 2.4 |
| Larimer | 211,852 | 206,728 | 5,124 | 2.4 | 210,858 | 204,648 | 6,210 | 2.9 |
| Las Animas | 6,008 | 5,765 | 243 | 4.0 | 6,002 | 5,712 | 290 | 4.8 |
| Lincoln | 2,181 | 2,120 | 61 | 2.8 | 2,159 | 2,089 | 70 | 3.2 |
| Logan | 10,304 | 10,077 | 227 | 2.2 | 10,227 | 9,934 | 293 | 2.9 |
| Mesa | 77,198 | 74,802 | 2,396 | 3.1 | 77,707 | 74,728 | 2,979 | 3.8 |
| Mineral | 571 | 563 | 8 | 1.4 | 541 | 530 | 11 | 2.0 |
| Moffat | 6,963 | 6,739 | 224 | 3.2 | 7,028 | 6,758 | 270 | 3.8 |
| Montezuma | 12,169 | 11,689 | 480 | 3.9 | 12,254 | 11,654 | 600 | 4.9 |
| Montrose | 21,376 | 20,747 | 629 | 2.9 | 21,359 | 20,578 | 781 | 3.7 |
| Morgan | 15,706 | 15,315 | 391 | 2.5 | 15,565 | 15,082 | 483 | 3.1 |
| Otero | 7,872 | 7,590 | 282 | 3.6 | 7,824 | 7,488 | 336 | 4.3 |
| Ouray | 2,316 | 2,248 | 68 | 2.9 | 2,413 | 2,329 | 84 | 3.5 |
| Park | 11,646 | 11,369 | 277 | 2.4 | 11,745 | 11,393 | 352 | 3.0 |
| Phillips | 2,399 | 2,358 | 41 | 1.7 | 2,346 | 2,295 | 51 | 2.2 |
| Pitkin | 10,988 | 10,767 | 221 | 2.0 | 11,040 | 10,754 | 286 | 2.6 |
| Prowers | 6,272 | 6,131 | 141 | 2.2 | 6,156 | 5,980 | 176 | 2.9 |
| Pueblo | 76,519 | 73,582 | 2,937 | 3.8 | 76,967 | 73,407 | 3,560 | 4.6 |
| Rio Blanco | 2,850 | 2,766 | 84 | 2.9 | 2,828 | 2,726 | 102 | 3.6 |
| Rio Grande | 5,209 | 5,035 | 174 | 3.3 | 5,174 | 4,949 | 225 | 4.3 |
| Routt | 16,816 | 16,504 | 312 | 1.9 | 16,896 | 16,503 | 393 | 2.3 |
| Saguache | 3,374 | 3,280 | 94 | 2.8 | 3,312 | 3,190 | 122 | 3.7 |
| San Juan | 539 | 524 | 15 | 2.8 | 550 | 534 | 16 | 2.9 |
| San Miguel | 6,308 | 6,207 | 101 | 1.6 | 6,384 | 6,254 | 130 | 2.0 |
| Sedgwick | 988 | 959 | 29 | 2.9 | 967 | 932 | 35 | 3.6 |
| Summit | 24,256 | 23,861 | 395 | 1.6 | 24,048 | 23,558 | 490 | 2.0 |
| Teller | 13,576 | 13,224 | 352 | 2.6 | 13,682 | 13,241 | 441 | 3.2 |
| Washington | 2,750 | 2,702 | 48 | 1.7 | 2,724 | 2,662 | 62 | 2.3 |
| Weld | 170,877 | 166,051 | 4,826 | 2.8 | 170,931 | 165,035 | 5,896 | 3.4 |
| Yuma | 5,531 | 5,445 | 86 | 1.6 | 5,352 | 5,238 | 114 | 2.1 |

All estimates made in cooperation with the U.S. Department of Labor, Bureau of Labor Statistics and adjusted to Current Population Survey data. Estimates have been revised to incorporate population data from the American Community Survey.

Estimates are subject to further revision through April 21, 2023 as the U.S. Department of Labor, Bureau of Labor Statistics completes the benchmarking process for 2022 estimates.

Not Seasonally Adjusted Labor Force

| | March 2023 | | | | March 2022 | | | |
|--------------------------------------|-------------|------------|--------------|------|-------------|------------|--------------|------|
| | Labor Force | Employment | Unemployment | Rate | Labor force | Employment | Unemployment | Rate |
| Colorado | 3,232,419 | 3,146,052 | 86,367 | 2.7 | 3,195,552 | 3,087,409 | 108,143 | 3.4 |
| Metropolitan Statistical Area | | | | | | | | |
| Boulder | 204,713 | 199,992 | 4,721 | 2.3 | 201,533 | 195,990 | 5,543 | 2.8 |
| Colorado Springs | 377,865 | 367,238 | 10,627 | 2.8 | 371,796 | 358,574 | 13,222 | 3.6 |
| Denver-Aurora-Lakewood | 1,734,903 | 1,688,891 | 46,012 | 2.7 | 1,721,400 | 1,664,025 | 57,375 | 3.3 |
| Fort Collins | 211,852 | 206,728 | 5,124 | 2.4 | 209,683 | 203,314 | 6,369 | 3.0 |
| Grand Junction | 77,198 | 74,802 | 2,396 | 3.1 | 77,084 | 74,129 | 2,955 | 3.8 |
| Greeley | 170,877 | 166,051 | 4,826 | 2.8 | 168,236 | 162,083 | 6,153 | 3.7 |
| Pueblo | 76,519 | 73,582 | 2,937 | 3.8 | 76,987 | 73,135 | 3,852 | 5.0 |
| Counties | | | | | | | | |
| Adams | 283,672 | 275,206 | 8,466 | 3.0 | 281,979 | 270,996 | 10,983 | 3.9 |
| Alamosa | 8,338 | 8,094 | 244 | 2.9 | 8,110 | 7,790 | 320 | 3.9 |
| Arapahoe | 377,130 | 367,139 | 9,991 | 2.6 | 374,756 | 361,794 | 12,962 | 3.5 |
| Archuleta | 6,949 | 6,753 | 196 | 2.8 | 6,824 | 6,569 | 255 | 3.7 |
| Baca | 2,057 | 2,027 | 30 | 1.5 | 2,019 | 1,983 | 36 | 1.8 |
| Bent | 1,790 | 1,736 | 54 | 3.0 | 1,705 | 1,639 | 66 | 3.9 |
| Boulder | 204,713 | 199,992 | 4,721 | 2.3 | 201,533 | 195,990 | 5,543 | 2.8 |
| Broomfield | 42,860 | 41,816 | 1,044 | 2.4 | 42,350 | 41,179 | 1,171 | 2.8 |
| Chaffee | 9,868 | 9,610 | 258 | 2.6 | 9,545 | 9,252 | 293 | 3.1 |
| Cheyenne | 1,017 | 1,000 | 17 | 1.7 | 1,014 | 996 | 18 | 1.8 |
| Clear Creek | 6,175 | 6,028 | 147 | 2.4 | 6,138 | 5,941 | 197 | 3.2 |
| Conejos | 4,031 | 3,921 | 110 | 2.7 | 3,916 | 3,771 | 145 | 3.7 |
| Costilla | 1,776 | 1,708 | 68 | 3.8 | 1,723 | 1,639 | 84 | 4.9 |
| Crowley | 1,393 | 1,341 | 52 | 3.7 | 1,366 | 1,315 | 51 | 3.7 |
| Custer | 2,326 | 2,267 | 59 | 2.5 | 2,209 | 2,143 | 66 | 3.0 |
| Delta | 12,996 | 12,534 | 462 | 3.6 | 13,046 | 12,483 | 563 | 4.3 |
| Denver | 439,184 | 426,829 | 12,355 | 2.8 | 435,744 | 420,582 | 15,162 | 3.5 |
| Dolores | 1,151 | 1,126 | 25 | 2.2 | 1,107 | 1,063 | 44 | 4.0 |
| Douglas | 209,450 | 204,483 | 4,967 | 2.4 | 206,935 | 201,455 | 5,480 | 2.6 |
| Eagle | 36,996 | 36,286 | 710 | 1.9 | 35,944 | 34,978 | 966 | 2.7 |
| El Paso | 364,289 | 354,014 | 10,275 | 2.8 | 358,408 | 345,633 | 12,775 | 3.6 |
| Elbert | 16,038 | 15,703 | 335 | 2.1 | 15,872 | 15,447 | 425 | 2.7 |
| Fremont | 14,146 | 13,529 | 617 | 4.4 | 14,270 | 13,503 | 767 | 5.4 |
| Garfield | 32,442 | 31,590 | 852 | 2.6 | 31,325 | 30,234 | 1,091 | 3.5 |
| Gilpin | 3,937 | 3,854 | 83 | 2.1 | 3,919 | 3,799 | 120 | 3.1 |
| Grand | 10,027 | 9,807 | 220 | 2.2 | 9,749 | 9,468 | 281 | 2.9 |
| Gunnison | 11,953 | 11,721 | 232 | 1.9 | 11,387 | 11,077 | 310 | 2.7 |
| Hinsdale | 389 | 381 | 8 | 2.1 | 370 | 359 | 11 | 3.0 |
| Huerfano | 2,382 | 2,249 | 133 | 5.6 | 2,387 | 2,232 | 155 | 6.5 |
| Jackson | 976 | 959 | 17 | 1.7 | 897 | 872 | 25 | 2.8 |
| Jefferson | 344,811 | 336,464 | 8,347 | 2.4 | 342,158 | 331,610 | 10,548 | 3.1 |
| Kiowa | 888 | 872 | 16 | 1.8 | 867 | 852 | 15 | 1.7 |
| Kit Carson | 4,222 | 4,161 | 61 | 1.4 | 4,032 | 3,941 | 91 | 2.3 |
| La Plata | 31,349 | 30,517 | 832 | 2.7 | 30,126 | 29,049 | 1,077 | 3.6 |
| Lake | 5,284 | 5,186 | 98 | 1.9 | 4,973 | 4,832 | 141 | 2.8 |
| Larimer | 211,852 | 206,728 | 5,124 | 2.4 | 209,683 | 203,314 | 6,369 | 3.0 |
| Las Animas | 6,008 | 5,765 | 243 | 4.0 | 6,140 | 5,837 | 303 | 4.9 |
| Lincoln | 2,181 | 2,120 | 61 | 2.8 | 2,171 | 2,105 | 66 | 3.0 |
| Logan | 10,304 | 10,077 | 227 | 2.2 | 10,226 | 9,926 | 300 | 2.9 |
| Mesa | 77,198 | 74,802 | 2,396 | 3.1 | 77,084 | 74,129 | 2,955 | 3.8 |
| Mineral | 571 | 563 | 8 | 1.4 | 512 | 497 | 15 | 2.9 |
| Moffat | 6,963 | 6,739 | 224 | 3.2 | 6,864 | 6,593 | 271 | 3.9 |
| Montezuma | 12,169 | 11,689 | 480 | 3.9 | 12,020 | 11,459 | 561 | 4.7 |
| Montrose | 21,376 | 20,747 | 629 | 2.9 | 21,147 | 20,280 | 867 | 4.1 |
| Morgan | 15,706 | 15,315 | 391 | 2.5 | 15,382 | 14,820 | 562 | 3.7 |
| Otero | 7,872 | 7,590 | 282 | 3.6 | 7,804 | 7,452 | 352 | 4.5 |
| Ouray | 2,316 | 2,248 | 68 | 2.9 | 2,366 | 2,276 | 90 | 3.8 |
| Park | 11,646 | 11,369 | 277 | 2.4 | 11,549 | 11,222 | 327 | 2.8 |
| Phillips | 2,399 | 2,358 | 41 | 1.7 | 2,311 | 2,251 | 60 | 2.6 |
| Pitkin | 10,988 | 10,767 | 221 | 2.0 | 10,646 | 10,329 | 317 | 3.0 |
| Prowers | 6,272 | 6,131 | 141 | 2.2 | 6,036 | 5,844 | 192 | 3.2 |
| Pueblo | 76,519 | 73,582 | 2,937 | 3.8 | 76,987 | 73,135 | 3,852 | 5.0 |
| Rio Blanco | 2,850 | 2,766 | 84 | 2.9 | 2,770 | 2,644 | 126 | 4.5 |
| Rio Grande | 5,209 | 5,035 | 174 | 3.3 | 5,117 | 4,861 | 256 | 5.0 |
| Routt | 16,816 | 16,504 | 312 | 1.9 | 16,176 | 15,747 | 429 | 2.7 |
| Saguache | 3,374 | 3,280 | 94 | 2.8 | 3,282 | 3,155 | 127 | 3.9 |
| San Juan | 539 | 524 | 15 | 2.8 | 536 | 519 | 17 | 3.2 |
| San Miguel | 6,308 | 6,207 | 101 | 1.6 | 5,931 | 5,784 | 147 | 2.5 |
| Sedgwick | 988 | 959 | 29 | 2.9 | 1,029 | 1,000 | 29 | 2.8 |
| Summit | 24,256 | 23,861 | 395 | 1.6 | 23,404 | 22,881 | 523 | 2.2 |
| Teller | 13,576 | 13,224 | 352 | 2.6 | 13,388 | 12,941 | 447 | 3.3 |
| Washington | 2,750 | 2,702 | 48 | 1.7 | 2,680 | 2,611 | 69 | 2.6 |
| Weld | 170,877 | 166,051 | 4,826 | 2.8 | 168,236 | 162,083 | 6,153 | 3.7 |
| Yuma | 5,531 | 5,445 | 86 | 1.6 | 5,367 | 5,248 | 119 | 2.2 |

All estimates made in cooperation with the U.S. Department of Labor, Bureau of Labor Statistics and adjusted to Current Population Survey data. Estimates have been revised to incorporate population data from the American Community Survey. Estimates are subject to further revision through April 21, 2023 as the U.S. Department of Labor, Bureau of Labor Statistics completes the benchmarking process for 2022 estimates.

| Not Seasonally Adjusted Labor Force | | | | | | | | |
|-------------------------------------|-------------|----------|------------|------|---------------|------------|------------|------|
| | March 2023 | | | | February 2023 | | | |
| Select Cities in Colorado | Labor Force | Employed | Unemployed | Rate | Labor Force | Employment | Unemployed | Rate |
| Arvada | 71,338 | 69,627 | 1,711 | 2.4 | 71,710 | 69,620 | 2,090 | 2.9 |
| Aurora | 210,996 | 204,955 | 6,041 | 2.9 | 212,203 | 204,879 | 7,324 | 3.5 |
| Boulder | 68,641 | 67,047 | 1,594 | 2.3 | 69,106 | 67,245 | 1,861 | 2.7 |
| Brighton | 20,935 | 20,259 | 676 | 3.2 | 21,077 | 20,225 | 852 | 4.0 |
| Castle Rock | 39,638 | 38,654 | 984 | 2.5 | 39,813 | 38,630 | 1,183 | 3.0 |
| Centennial | 65,445 | 63,811 | 1,634 | 2.5 | 65,715 | 63,796 | 1,919 | 2.9 |
| Colorado Springs | 252,769 | 245,796 | 6,973 | 2.8 | 253,824 | 245,369 | 8,455 | 3.3 |
| Commerce City | 31,270 | 30,202 | 1,068 | 3.4 | 31,464 | 30,158 | 1,306 | 4.2 |
| Englewood | 22,018 | 21,404 | 614 | 2.8 | 22,113 | 21,399 | 714 | 3.2 |
| Erie | 18,803 | 18,393 | 410 | 2.2 | 18,844 | 18,355 | 489 | 2.6 |
| Fort Collins | 102,667 | 100,234 | 2,433 | 2.4 | 102,138 | 99,226 | 2,912 | 2.9 |
| Fountain | 13,841 | 13,405 | 436 | 3.2 | 13,896 | 13,382 | 514 | 3.7 |
| Grand Junction | 31,152 | 30,152 | 1,000 | 3.2 | 31,348 | 30,122 | 1,226 | 3.9 |
| Greeley | 52,492 | 50,843 | 1,649 | 3.1 | 52,511 | 50,532 | 1,979 | 3.8 |
| Lafayette | 18,317 | 17,902 | 415 | 2.3 | 18,435 | 17,955 | 480 | 2.6 |
| Lakewood | 89,992 | 87,605 | 2,387 | 2.7 | 90,556 | 87,600 | 2,956 | 3.3 |
| Littleton | 25,918 | 25,287 | 631 | 2.4 | 26,067 | 25,281 | 786 | 3.0 |
| Longmont | 57,919 | 56,496 | 1,423 | 2.5 | 58,468 | 56,657 | 1,811 | 3.1 |
| Loveland | 46,919 | 45,720 | 1,199 | 2.6 | 46,714 | 45,260 | 1,454 | 3.1 |
| Northglenn | 21,794 | 21,192 | 602 | 2.8 | 21,938 | 21,161 | 777 | 3.5 |
| Parker | 35,107 | 34,293 | 814 | 2.3 | 35,231 | 34,271 | 960 | 2.7 |
| Pueblo | 48,767 | 46,709 | 2,058 | 4.2 | 49,091 | 46,598 | 2,493 | 5.1 |
| Thornton | 84,511 | 82,241 | 2,270 | 2.7 | 84,799 | 82,121 | 2,678 | 3.2 |
| Westminster | 68,467 | 66,621 | 1,846 | 2.7 | 68,767 | 66,563 | 2,204 | 3.2 |
| Wheat Ridge | 17,708 | 17,214 | 494 | 2.8 | 17,833 | 17,213 | 620 | 3.5 |
| Windsor | 15,738 | 15,312 | 426 | 2.7 | 15,681 | 15,206 | 475 | 3.0 |

| | March 2023 | | | | March 2022 | | | |
|---------------------------|-------------|----------|------------|------|-------------|------------|------------|------|
| Select Cities in Colorado | Labor Force | Employed | Unemployed | Rate | Labor Force | Employment | Unemployed | Rate |
| Arvada | 71,338 | 69,627 | 1,711 | 2.4 | 70,733 | 68,621 | 2,112 | 3.0 |
| Aurora | 210,996 | 204,955 | 6,041 | 2.9 | 210,062 | 201,954 | 8,108 | 3.9 |
| Boulder | 68,641 | 67,047 | 1,594 | 2.3 | 67,356 | 65,705 | 1,651 | 2.5 |
| Brighton | 20,935 | 20,259 | 676 | 3.2 | 20,833 | 19,941 | 892 | 4.3 |
| Castle Rock | 39,638 | 38,654 | 984 | 2.5 | 39,243 | 38,082 | 1,161 | 3.0 |
| Centennial | 65,445 | 63,811 | 1,634 | 2.5 | 64,555 | 62,882 | 1,673 | 2.6 |
| Colorado Springs | 252,769 | 245,796 | 6,973 | 2.8 | 248,478 | 239,977 | 8,501 | 3.4 |
| Commerce City | 31,270 | 30,202 | 1,068 | 3.4 | 31,115 | 29,740 | 1,375 | 4.4 |
| Englewood | 22,018 | 21,404 | 614 | 2.8 | 21,841 | 21,093 | 748 | 3.4 |
| Erie | 18,803 | 18,393 | 410 | 2.2 | 18,399 | 17,985 | 414 | 2.3 |
| Fort Collins | 102,667 | 100,234 | 2,433 | 2.4 | 101,370 | 98,579 | 2,791 | 2.8 |
| Fountain | 13,841 | 13,405 | 436 | 3.2 | 13,587 | 13,088 | 499 | 3.7 |
| Grand Junction | 31,152 | 30,152 | 1,000 | 3.2 | 31,054 | 29,881 | 1,173 | 3.8 |
| Greeley | 52,492 | 50,843 | 1,649 | 3.1 | 51,798 | 49,628 | 2,170 | 4.2 |
| Lafayette | 18,317 | 17,902 | 415 | 2.3 | 18,007 | 17,544 | 463 | 2.6 |
| Lakewood | 89,992 | 87,605 | 2,387 | 2.7 | 89,535 | 86,341 | 3,194 | 3.6 |
| Littleton | 25,918 | 25,287 | 631 | 2.4 | 25,695 | 24,919 | 776 | 3.0 |
| Longmont | 57,919 | 56,496 | 1,423 | 2.5 | 57,327 | 55,364 | 1,963 | 3.4 |
| Loveland | 46,919 | 45,720 | 1,199 | 2.6 | 46,540 | 44,965 | 1,575 | 3.4 |
| Northglenn | 21,794 | 21,192 | 602 | 2.8 | 21,663 | 20,867 | 796 | 3.7 |
| Parker | 35,107 | 34,293 | 814 | 2.3 | 34,661 | 33,785 | 876 | 2.5 |
| Pueblo | 48,767 | 46,709 | 2,058 | 4.2 | 49,105 | 46,426 | 2,679 | 5.5 |
| Thornton | 84,511 | 82,241 | 2,270 | 2.7 | 83,766 | 80,983 | 2,783 | 3.3 |
| Westminster | 68,467 | 66,621 | 1,846 | 2.7 | 67,814 | 65,626 | 2,188 | 3.2 |
| Wheat Ridge | 17,708 | 17,214 | 494 | 2.8 | 17,666 | 16,966 | 700 | 4.0 |
| Windsor | 15,738 | 15,312 | 426 | 2.7 | 15,420 | 14,971 | 449 | 2.9 |

All estimates made in cooperation with the U.S. Department of Labor, Bureau of Labor Statistics and adjusted to Current Population Survey data. Estimates have been revised to incorporate population data from the American Community Survey. Estimates are subject to further revision through April 21, 2023 as the U.S. Department of Labor, Bureau of Labor Statistics completes the benchmarking process for 2022 estimates. Colorado Department of Labor and Employment 2023

Colorado LMI Data Overview

March 2023

| Employment | | | | | |
|---|-----------|-----------|-----------|-----------------------|--------|
| | Mar-23 | Feb-23 | Mar-22 | Change from previous: | |
| | | | | Period | Year |
| Nonfarm Wage and Salary Employment (SA) | 2,879,800 | 2,884,500 | 2,846,400 | (4,700) | 33,400 |
| Total Resident Employment (SA) | 3,136,300 | 3,124,400 | 3,100,100 | 11,900 | 36,200 |
| | Q3 2022 | Q2 2022 | Q3 2021 | | |
| UI Covered Total Employment | 2,832,186 | 2,820,124 | 2,733,259 | 12,062 | 98,927 |
| UI Covered Private Employment | 2,404,030 | 2,387,838 | 2,315,264 | 16,192 | 88,766 |

| Unemployment | | | | | |
|-------------------------|---------|---------|---------|-----------------------|----------|
| | Mar-23 | Feb-23 | Mar-22 | Change from previous: | |
| | | | | Period | Year |
| Unemployment (SA) | 91,000 | 92,700 | 104,800 | (1,700) | (13,800) |
| Percent Unemployed (SA) | 2.8% | 2.9% | 3.3% | (0.1) | (0.5) |
| | Mar-23 | Feb-23 | Mar-22 | | |
| Initial Claims | 12,463 | 11,766 | 10,751 | 697 | 1,712 |
| Continued Weeks Claimed | 209,655 | 172,794 | 120,935 | 36,861 | 88,720 |

| Wages and Earnings | | | | | |
|---|------------|------------|------------|-----------------------|----------|
| | Q3 2022 | Q2 2022 | Q3 2021 | Change from previous: | |
| | | | | Period | Year |
| Total Average Weekly Wage | \$1,437 | \$1,357 | \$1,321 | \$80 | \$116 |
| Private Average Weekly Wage | \$1,447 | \$1,374 | \$1,326 | \$73 | \$121 |
| | Mar-23 | Feb-23 | Mar-22 | | |
| Average Weekly Earnings (Construction) | \$1,314.18 | \$1,230.82 | \$1,110.08 | \$83.36 | \$204.10 |
| Average Weekly Earnings (Manufacturing) | \$1,115.92 | \$1,118.81 | \$1,036.73 | (\$2.89) | \$79.19 |

| CO Unemployment Insurance Trust Fund | | | | | |
|--------------------------------------|--------------|--------------|-----------------|-----------------------|-----------------|
| | Feb-23 | Jan-23 | Feb-22 | Change from previous: | |
| | | | | Period | Year |
| Employer Contributions | \$49,354,297 | \$40,832,184 | \$61,539,179 | \$8,522,114 | (\$12,184,881) |
| Benefits Paid | \$65,936,143 | \$46,718,114 | \$31,546,242 | \$19,218,029 | \$34,389,901 |
| Average Weekly Benefit Amount | \$548.89 | \$547.04 | \$450.24 | \$1.85 | \$98.65 |
| Duration (weeks) | 8.53 | 11.22 | 14.47 | (2.69) | (5.94) |
| Outstanding Title XII Loan Balance | \$4,348,974 | \$4,825,320 | \$1,013,089,861 | (\$476,346) | (1,008,740,887) |

| Consumer Price Index for All Urban Consumers | | | | | |
|--|---------|---------|---------|-------------------------|------|
| | Mar-23 | Jan-23 | Mar-22 | % Change from previous: | |
| | | | | Period | Year |
| Not seasonally adjusted | | | | | |
| Denver-Aurora-Lakewood | 316.566 | 312.392 | 299.529 | 1.3% | 5.7% |
| US City Average | 301.836 | 299.170 | 287.504 | 0.9% | 5.0% |

(Most current data available for all categories)