

PRESS RELEASE

Colorado Department of Labor and Employment • 633 17th Street, Suite 1200 • Denver, CO 80202 • (303) 318-8004 • Fax: (303) 318-8070

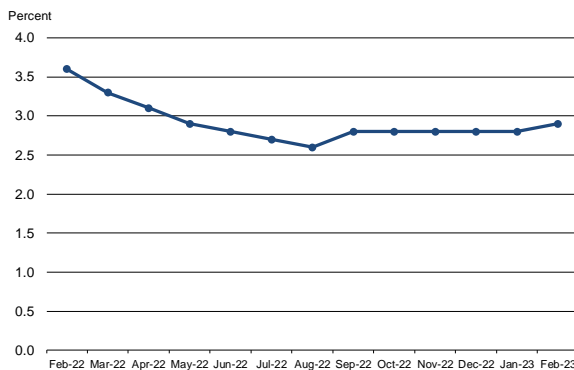
For Immediate Release

Date: March 24, 2023/ 8:00 A.M.
Contact: Office of Government, Policy and Public Relations
Email: cdle_pr@state.co.us
Web: <http://www.colmigateway.com>

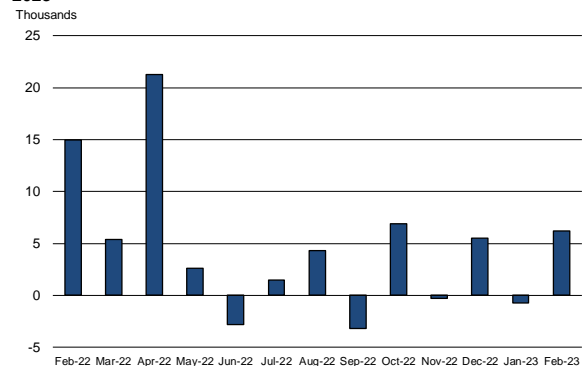
Colorado Employment Situation – February 2023

6,200 Nonfarm Payroll Jobs Added in February; Unemployment Rate Rises Slightly to 2.9 Percent

Colorado unemployment rate, seasonally adjusted
February 2022 - February 2023



Colorado nonfarm payroll employment over-the-month
change, seasonally adjusted, February 2022 - February
2023



Household survey data

- According to the survey of households, Colorado's seasonally adjusted **unemployment rate** rose one-tenth of a percentage point in February to 2.9 percent compared to the January rate of 2.8 percent. The **number of unemployed individuals** increased by 2,200 over the same time period to 92,700. Colorado's unemployment rate has remained below 3.0 percent for ten consecutive months and remains at pre-pandemic levels. The national unemployment rate grew two-tenths of a percentage point to 3.6 percent from January to February.
- Colorado's **labor force** increased by 10,700 in February to 3,217,000. The share of Coloradans participating in the labor force rose to 68.3 percent in February, compared to 68.1 percent the month prior. The U.S. labor force participation rate was 62.5 percent in February, increasing one-tenth of a percentage point from the month prior.
- The **number of individuals employed** in Colorado grew by 8,500 in February to 3,124,400, which represents 66.3 percent of the state's 16+ population. The rate of 66.3 percent is one-tenth of a percentage point higher than a year ago. The national employment-to-population ratio was unchanged in February at 60.2 percent.

Establishment survey data

- Employers in Colorado added 6,200 **nonfarm payroll jobs** from January to February for a total of 2,887,700 jobs, according to the survey of business establishments. Private sector payroll jobs increased by 4,400 and government added 1,800 jobs.
- **January estimates** were revised down to 2,881,500, and the over the month change from December to January was a loss of 700 rather than the originally estimated increase of 800 (monthly revisions are based on additional responses from businesses and government agencies since the last published estimates).
- **Private industry sectors with significant job gains** in February were: leisure and hospitality (~1,500). There were no significant private sector over the month declines.
- **Since February 2022**, nonfarm payroll jobs have increased 46,700, with the private sector growing by 38,800 and government adding 7,900 jobs. The largest **private sector job gains** were in leisure and hospitality (~19,200), professional and business services (~17,000), and educational and health services (~5,000). During that same period financial activities (~3,600), trade, transportation, and utilities (~2,100) and construction (~1,500), and information (~800) **payroll jobs declined**. Colorado's **rate of job growth** over the past year is 1.6 percent, lagging the U.S. rate of 2.9 percent.
- Over the year, the **average workweek** for all Colorado employees on private nonfarm payrolls decreased from 32.9 to 32.7 hours, while **average hourly earnings** grew from \$33.77 to \$35.68, nearly two dollars and sixty cents more than the national average hourly earnings of \$33.09.

###

All Colorado estimates from the establishment and household surveys, including greater geographic detail, are available at: <http://www.colmigateway.com>. Estimates for all states and the nation are available at: <http://www.bls.gov>.

For data visualizations, visit public.tableau.com/app/profile/cdle.lmi.

The **March 2023 Colorado Employment Situation** will be released at 8:00 AM on Friday, April 21, 2023. The full schedule of release dates for calendar year 2023 estimates is available at <http://www.colmigateway.com>.

###

Technical Notes

This release provides information on industry employment and labor force statistics for February 2023, the most current estimates available from the Colorado Department of Labor and Employment. The reference period for the establishment and household surveys was the pay period or week that includes the 12th of the month.

The unemployment rate, labor force, labor force participation, total employment and the number of unemployed are based on a survey of households. The total employment estimate derived from this survey is intended to measure the number of people employed.

Nonfarm payroll jobs estimates are based on a survey of business establishments and government agencies, and are intended to measure the number of jobs, not the number of people employed. Other series based on this survey include private sector average weekly hours, average hourly earnings and average weekly earnings.

The business establishment survey covers about seven times the number of households surveyed and is therefore considered a more reliable indicator of economic conditions. Because the estimates are based on two separate surveys, one measuring jobs by worksite and the other measuring persons employed and unemployed by household, estimates based on these surveys may provide seemingly conflicting results.

###

Supplemental information available in following pages

FEBRUARY 2023

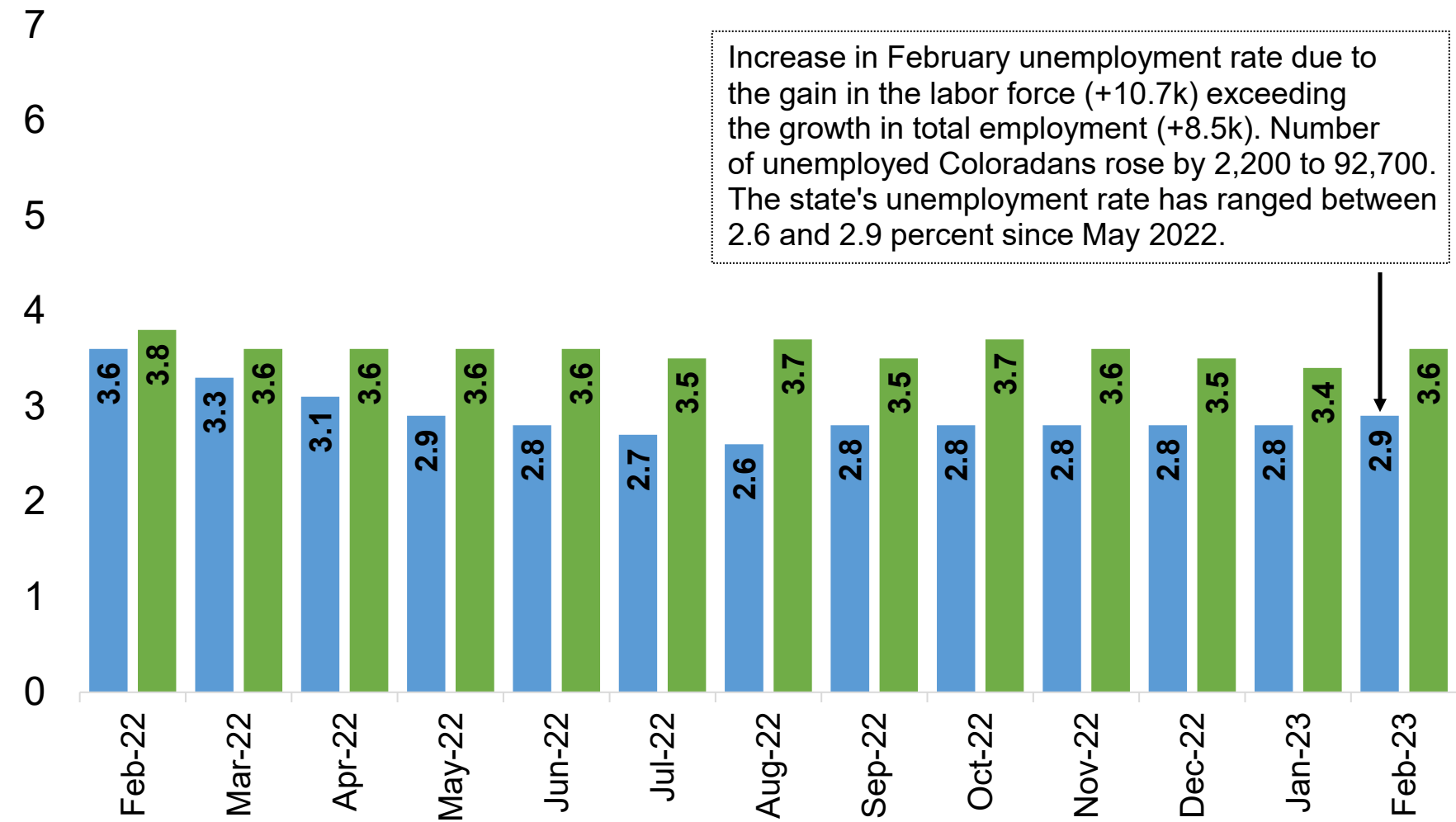
EMPLOYMENT SITUATION SUPPLEMENTAL CHARTS

March 24, 2023

This briefing provides information on industry employment and labor force statistics, derived from surveys of business establishments and households. The reference period for these surveys is the pay period or week that includes the 12th of the month. The reference week for February was specifically February 12th – February 18th.

Colorado and U.S. Unemployment Rates Increase Slightly in February

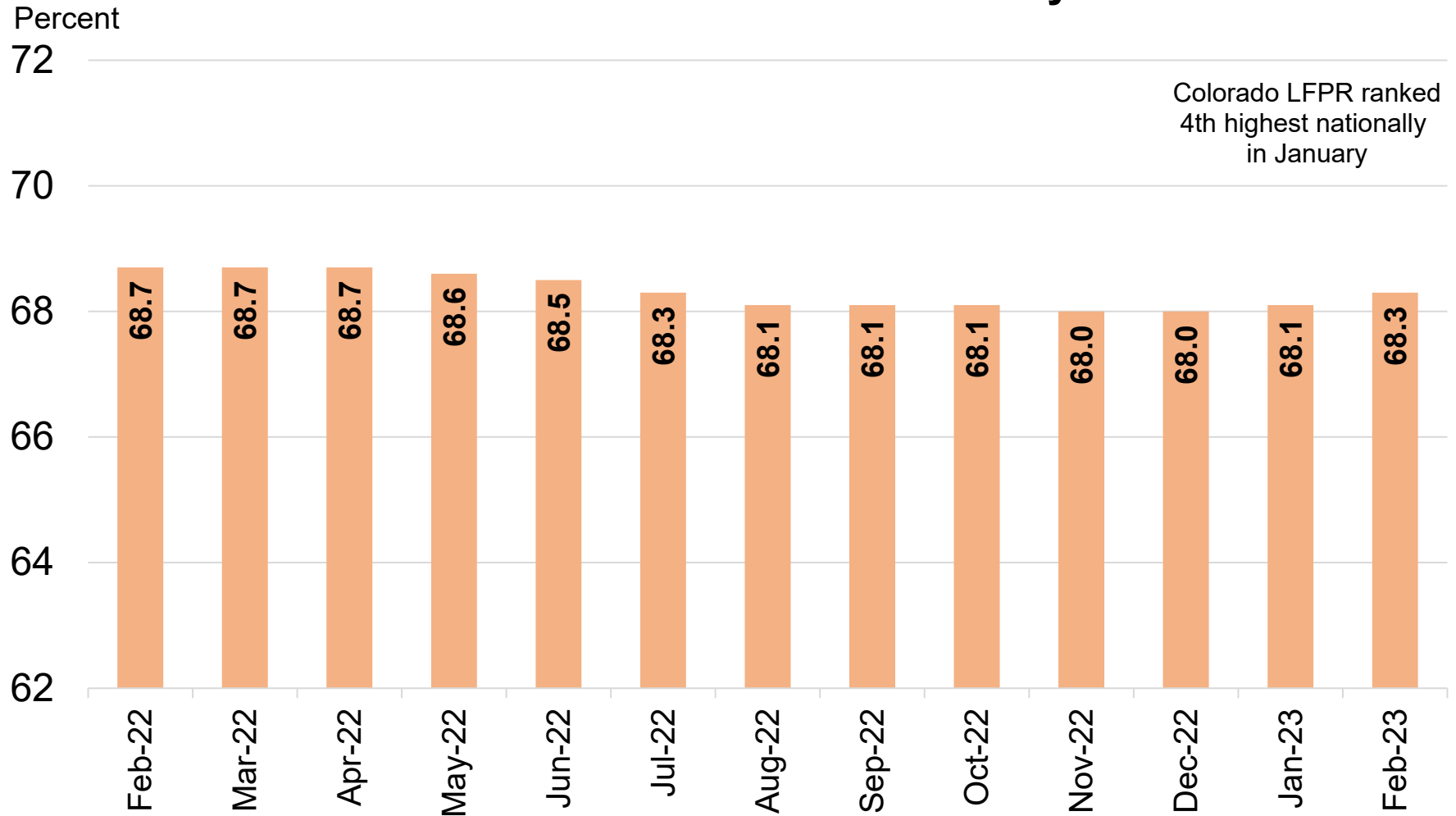
Percent



Source: Colorado Department of Labor and Employment; Bureau of Labor Statistics
Data seasonally adjusted

■ Colorado ■ U.S.

Colorado's Labor Force Participation Rate Rises to 68.3 Percent in February



Source: Colorado Department of Labor and Employment; Bureau of Labor Statistics

Data seasonally adjusted. Estimates share of Colorado's 16+ population that is in the labor force in a given month.

February 2020 rate was 68.8 percent.

For further information on labor force definitions, go here: <https://www.bls.gov/lau/laufaq.htm>

Colorado's Employment-to-Population Ratio Moves Up a Tenth of a Percentage Point in February

Percent

68

67

66

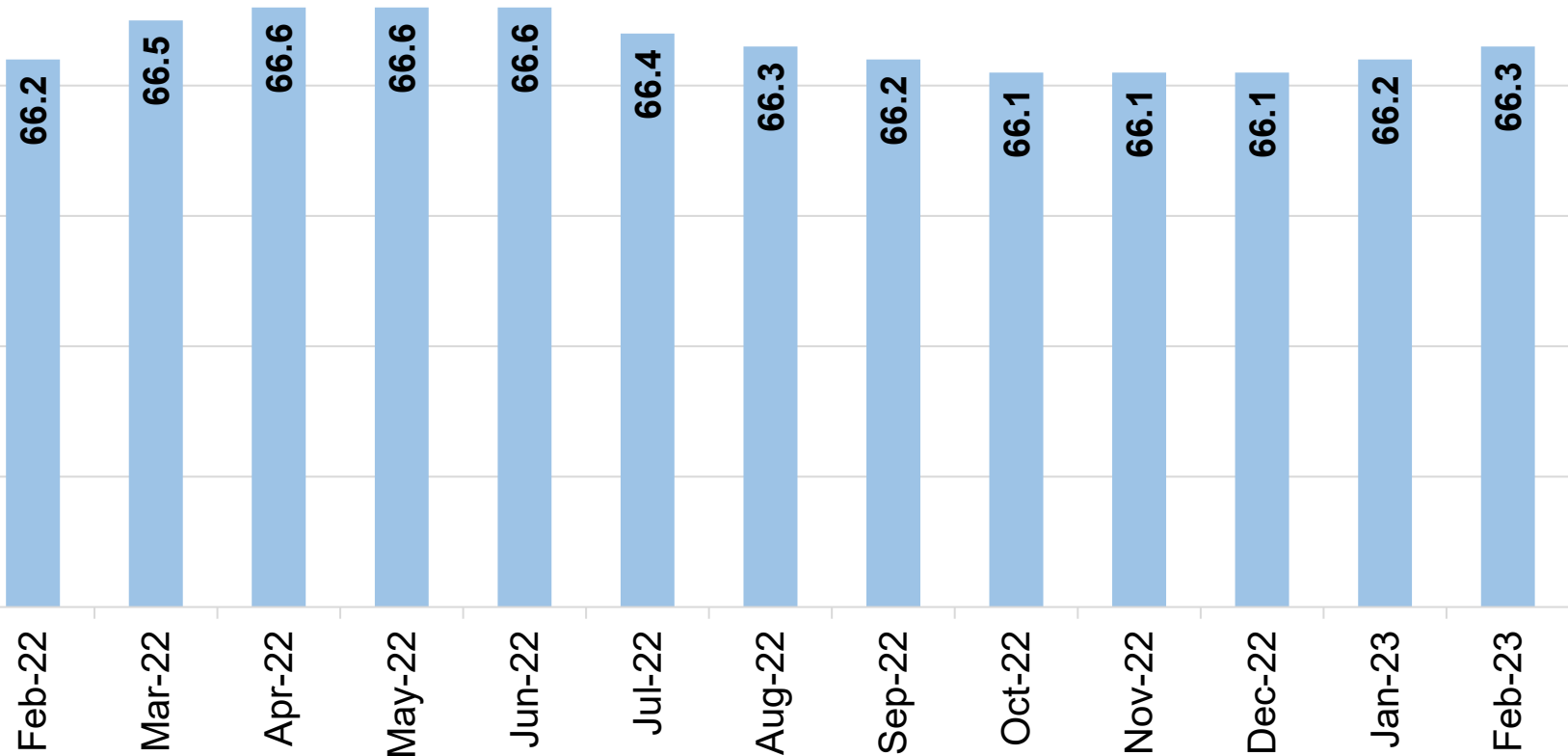
65

64

63

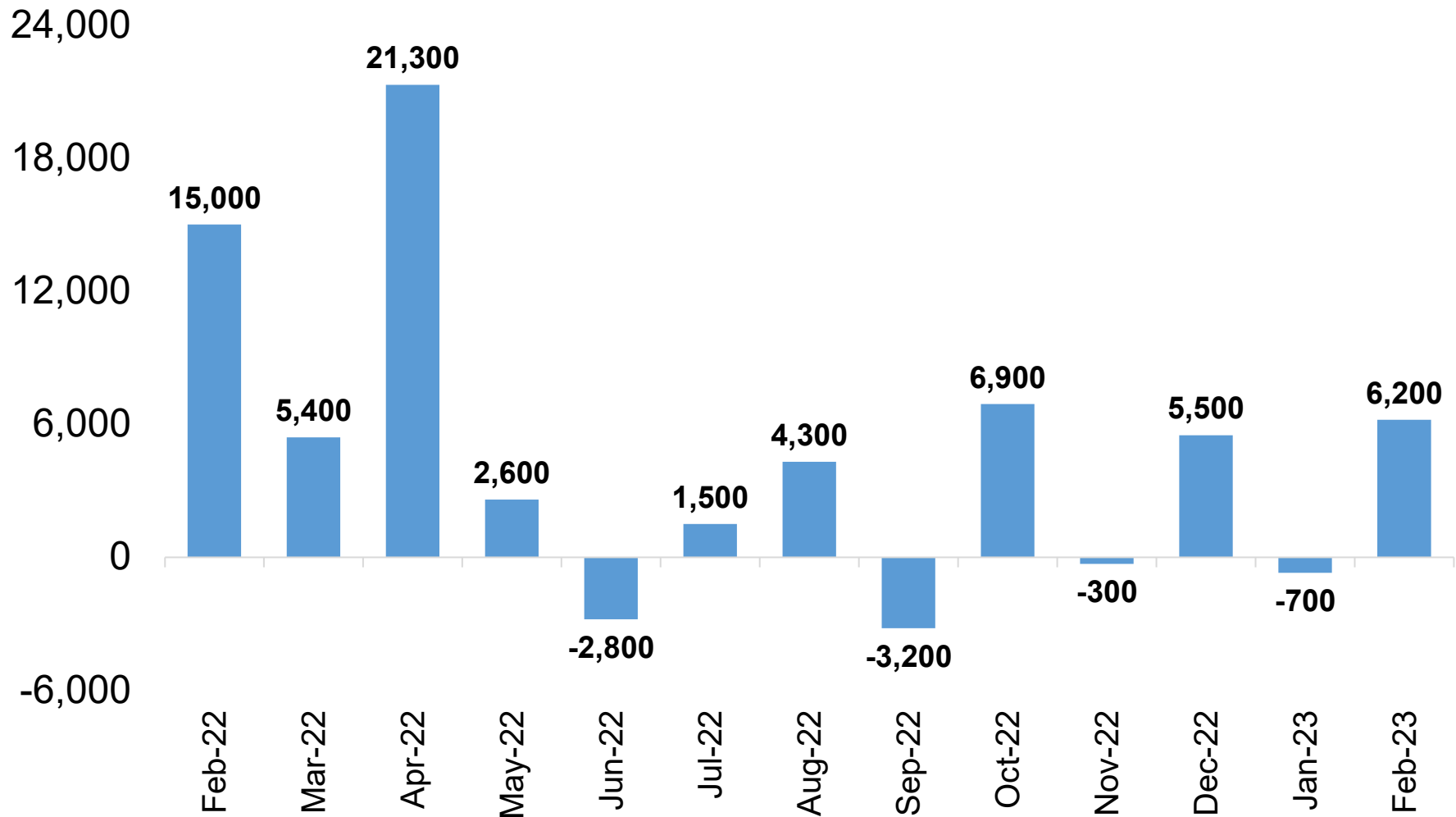
62

Colorado EPOP ranked
4th highest nationally
in January



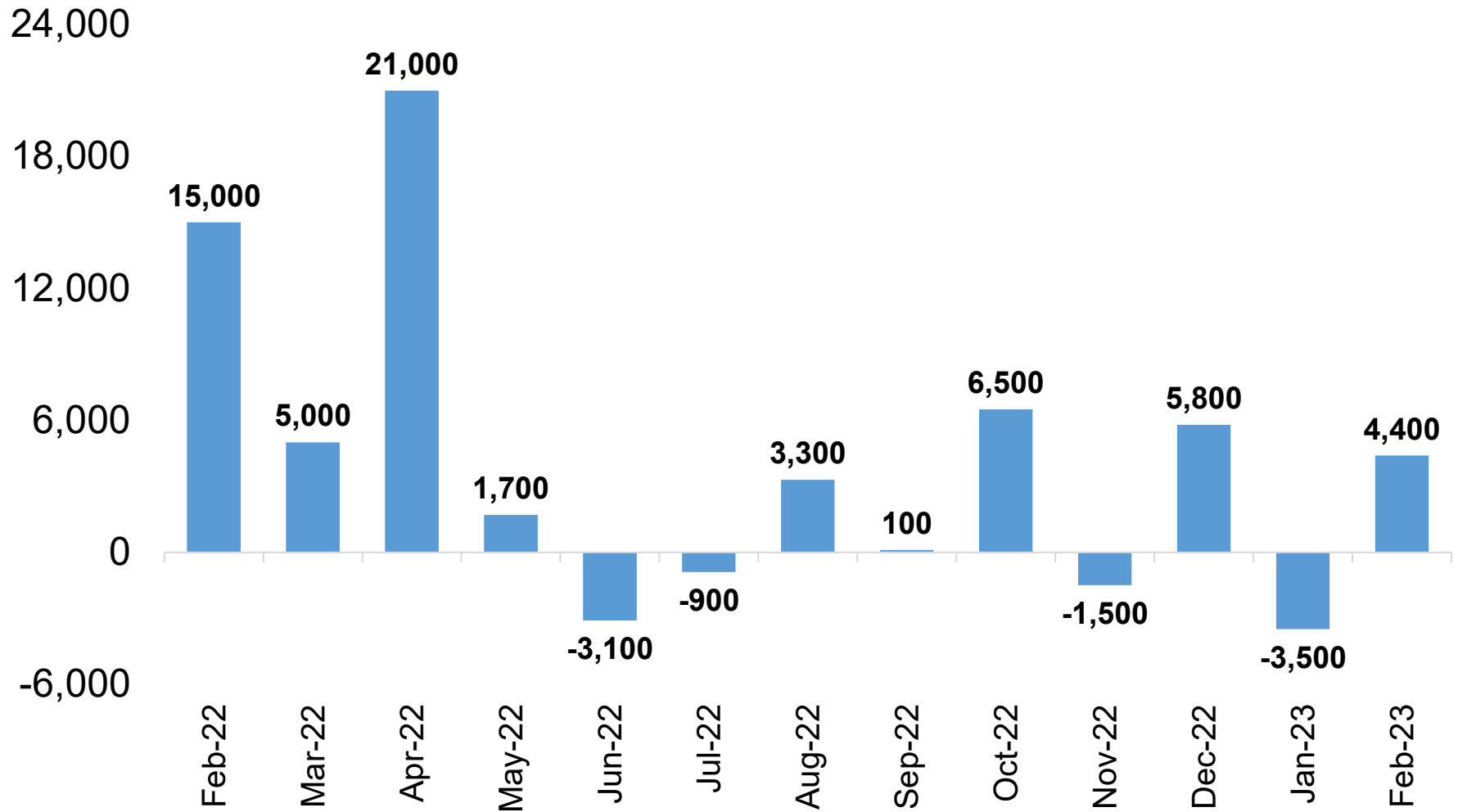
Source: Colorado Department of Labor and Employment; Bureau of Labor Statistics
Data seasonally adjusted. Estimates share of Colorado's 16+ population that is employed in a given month.
February 2020 rate was 66.6 percent.

Colorado Added 6,200 Total Nonfarm Jobs in February; January Numbers Revised Down 1,500



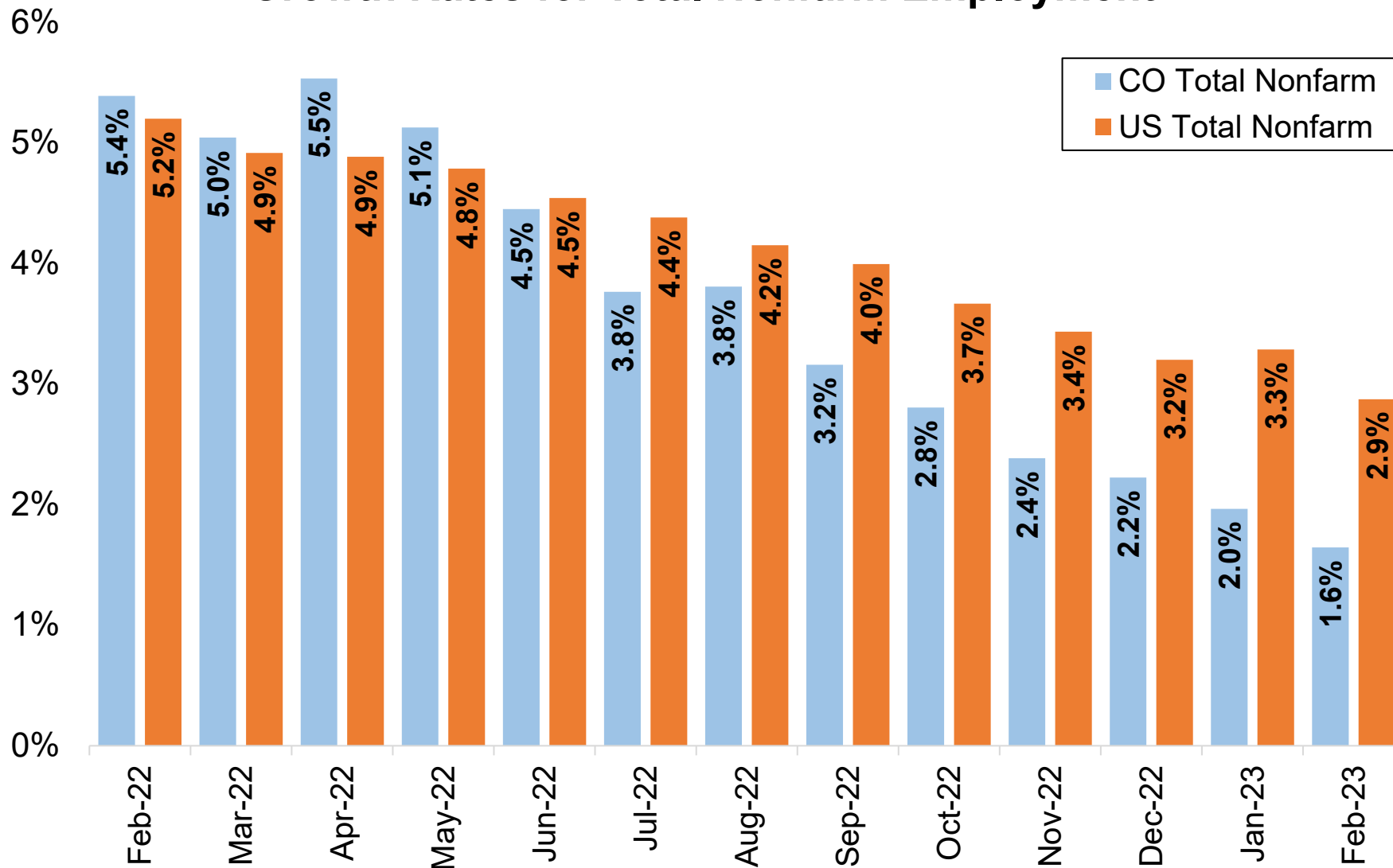
Source: Colorado Department of Labor and Employment; Bureau of Labor Statistics
Data seasonally adjusted

4,400 Private Sector Jobs Gained in February; January Figures Revised Down 3,500



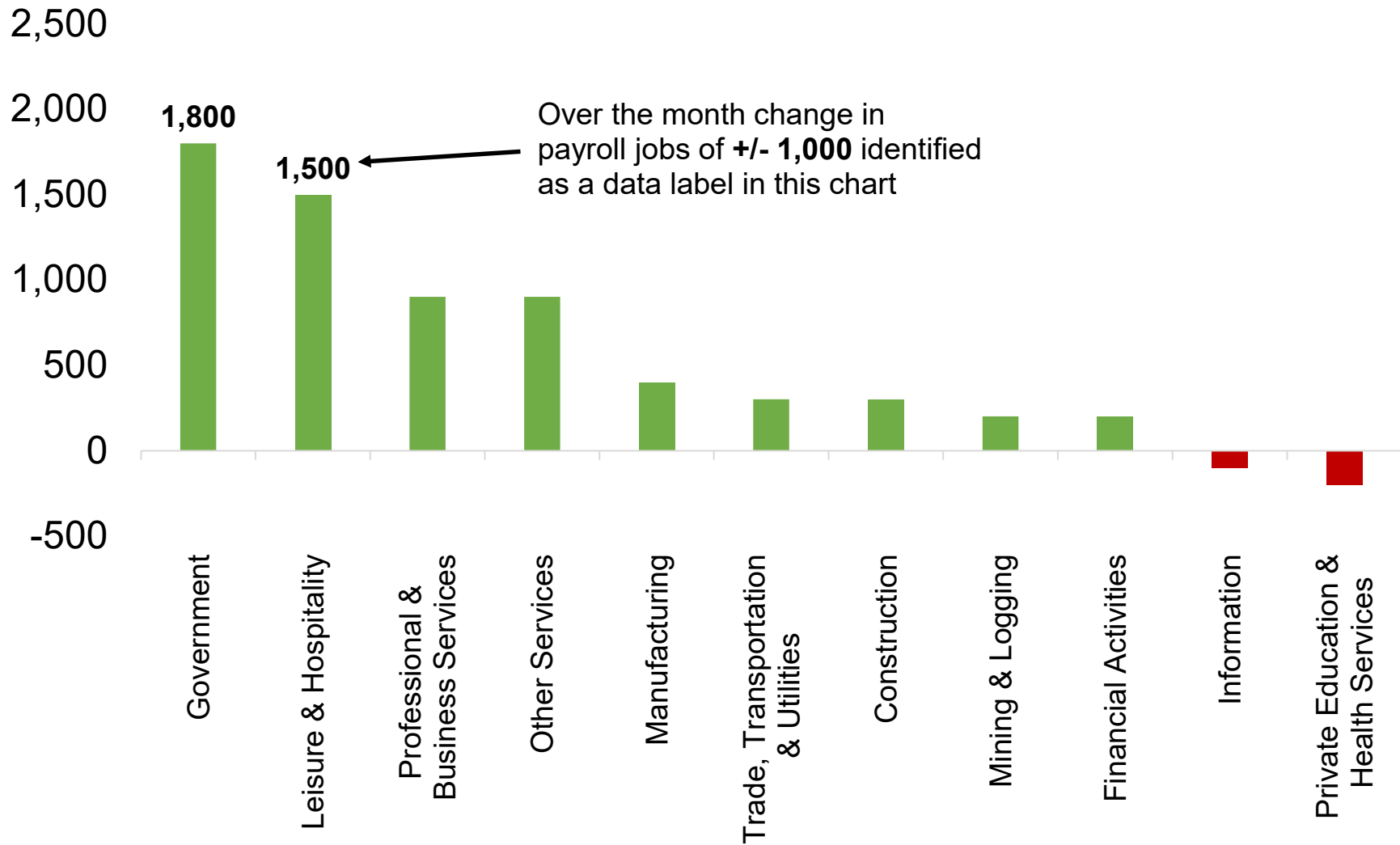
Source: Colorado Department of Labor and Employment; Bureau of Labor Statistics
Data seasonally adjusted

Colorado and U.S. Over the Year Growth Rates for Total Nonfarm Employment



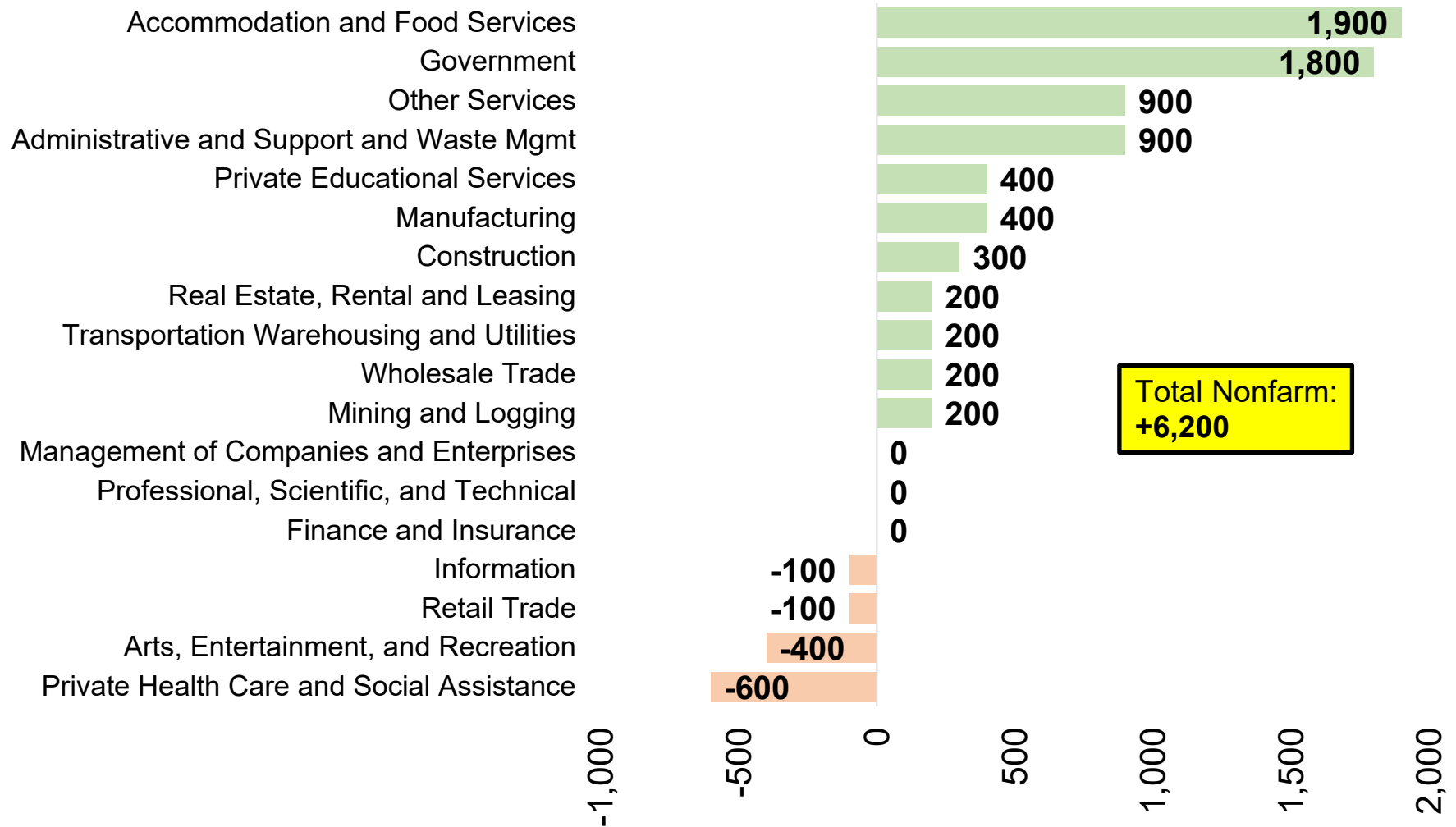
Source: Colorado Department of Labor and Employment; Bureau of Labor Statistics
Data seasonally adjusted

Majority of Industries Added Jobs in February; Government and Leisure & Hospitality Lead Gains



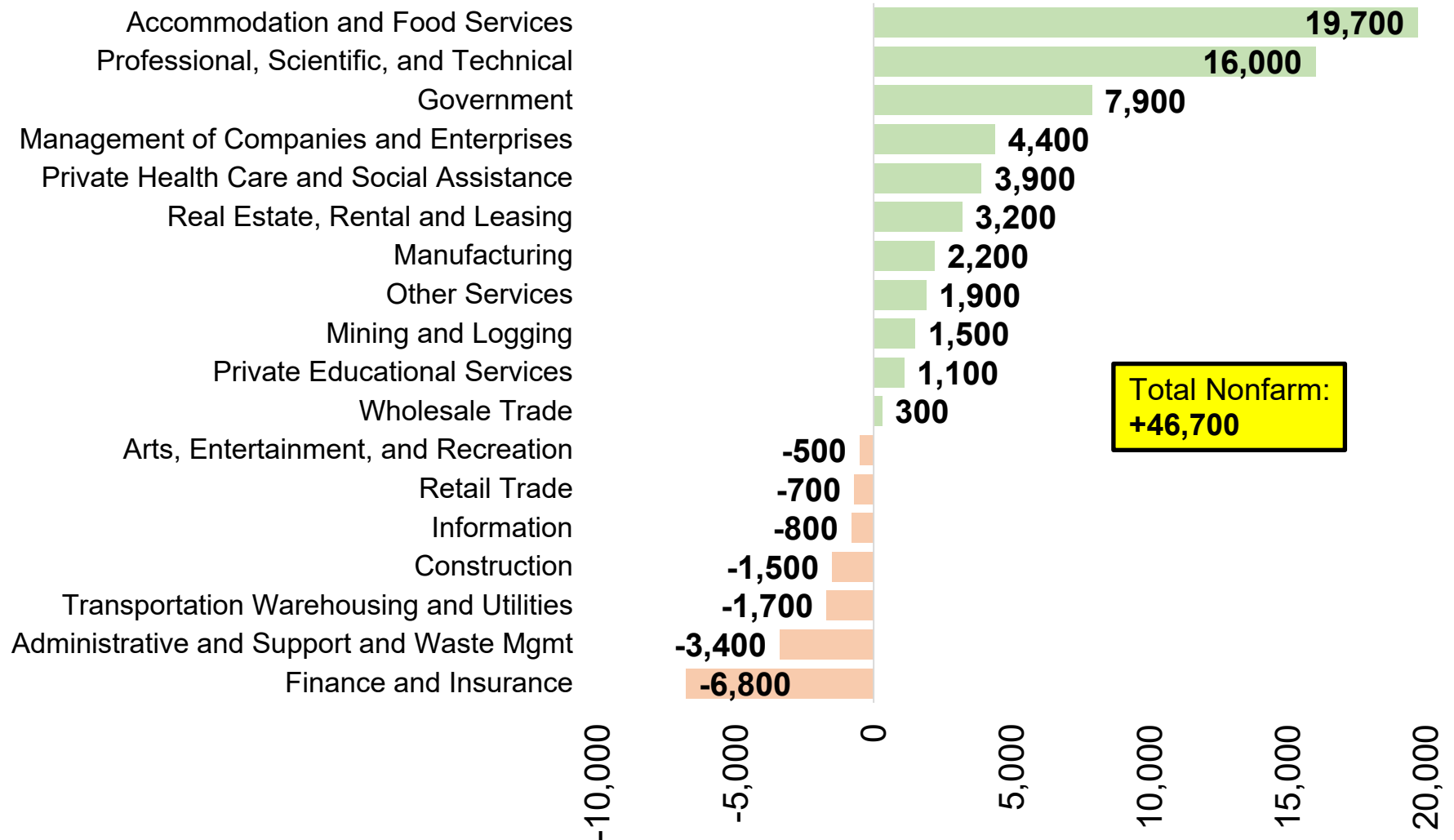
Source: Colorado Department of Labor and Employment; Bureau of Labor Statistics
Data seasonally adjusted

Change in Payroll Jobs in February 2023, by Industry Sector



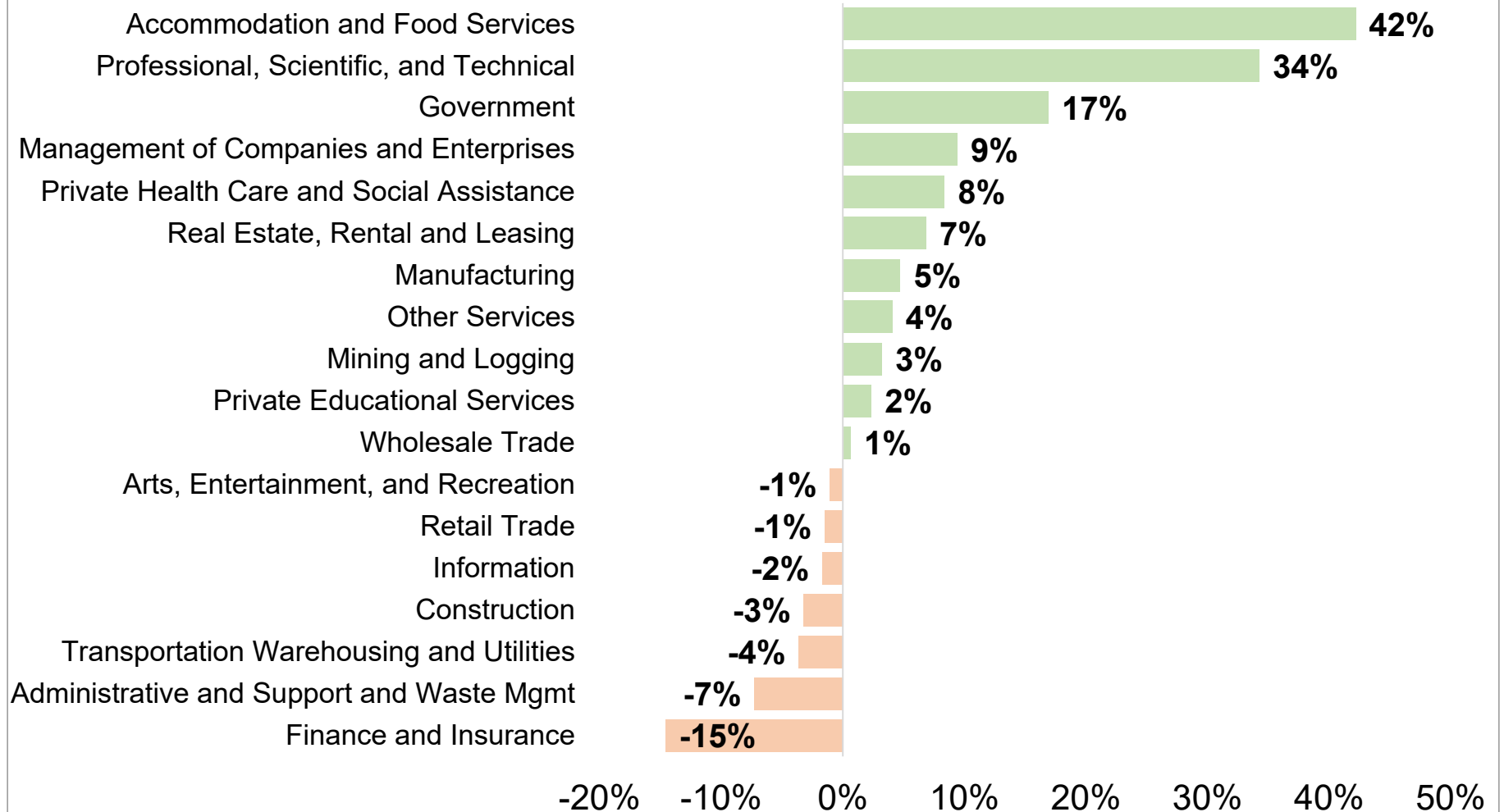
Source: Colorado Department of Labor and Employment; Bureau of Labor Statistics
Data seasonally adjusted, January 2023 to February 2023

Change in Payroll Jobs Over Past 12 Months, by Industry Sector



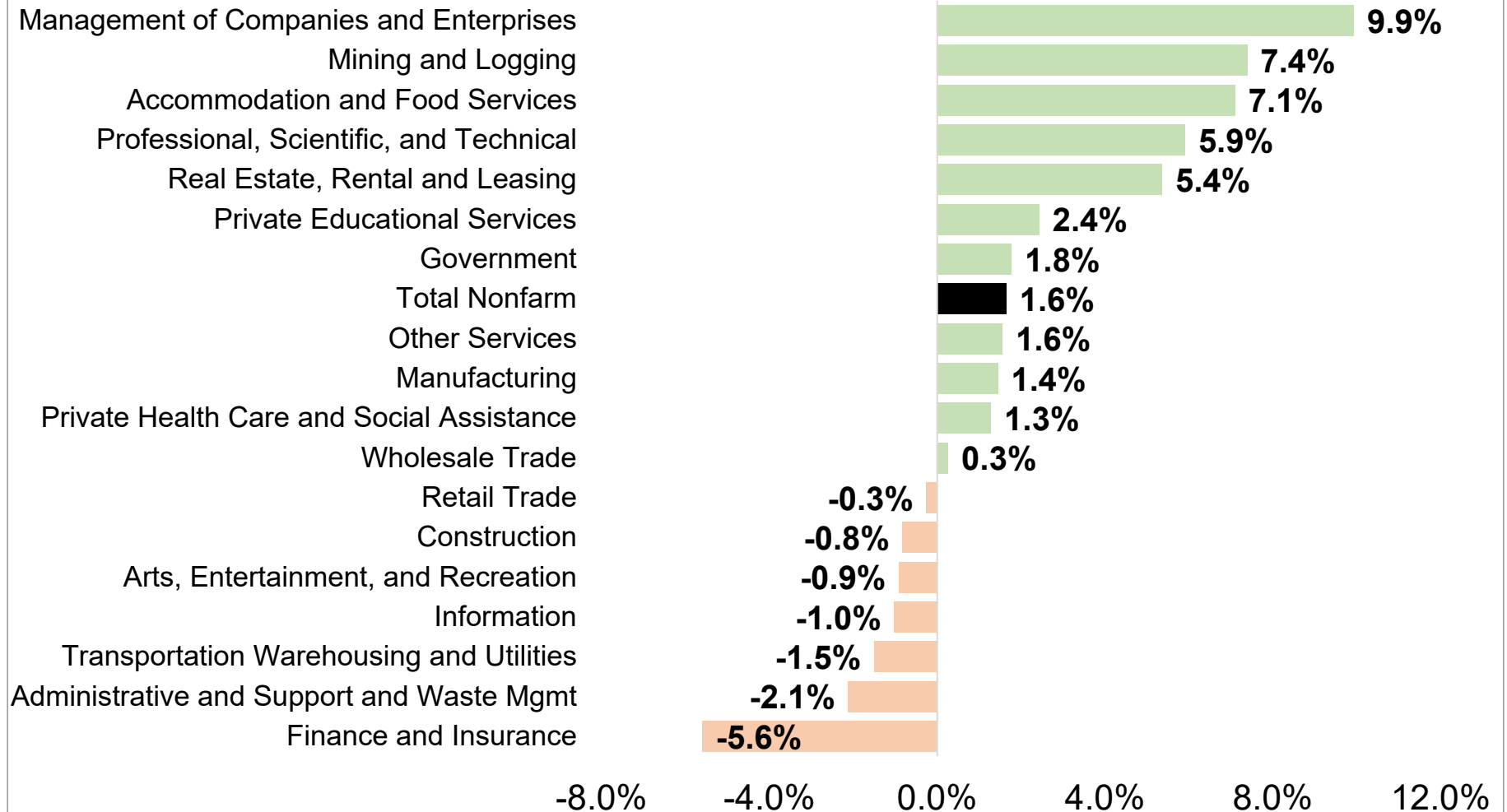
Source: Colorado Department of Labor and Employment; Bureau of Labor Statistics
Data seasonally adjusted, February 2022 to February 2023

Percent Contribution to Total Colorado Nonfarm Payroll Jobs Added Over Past 12 Months, by Industry Sector



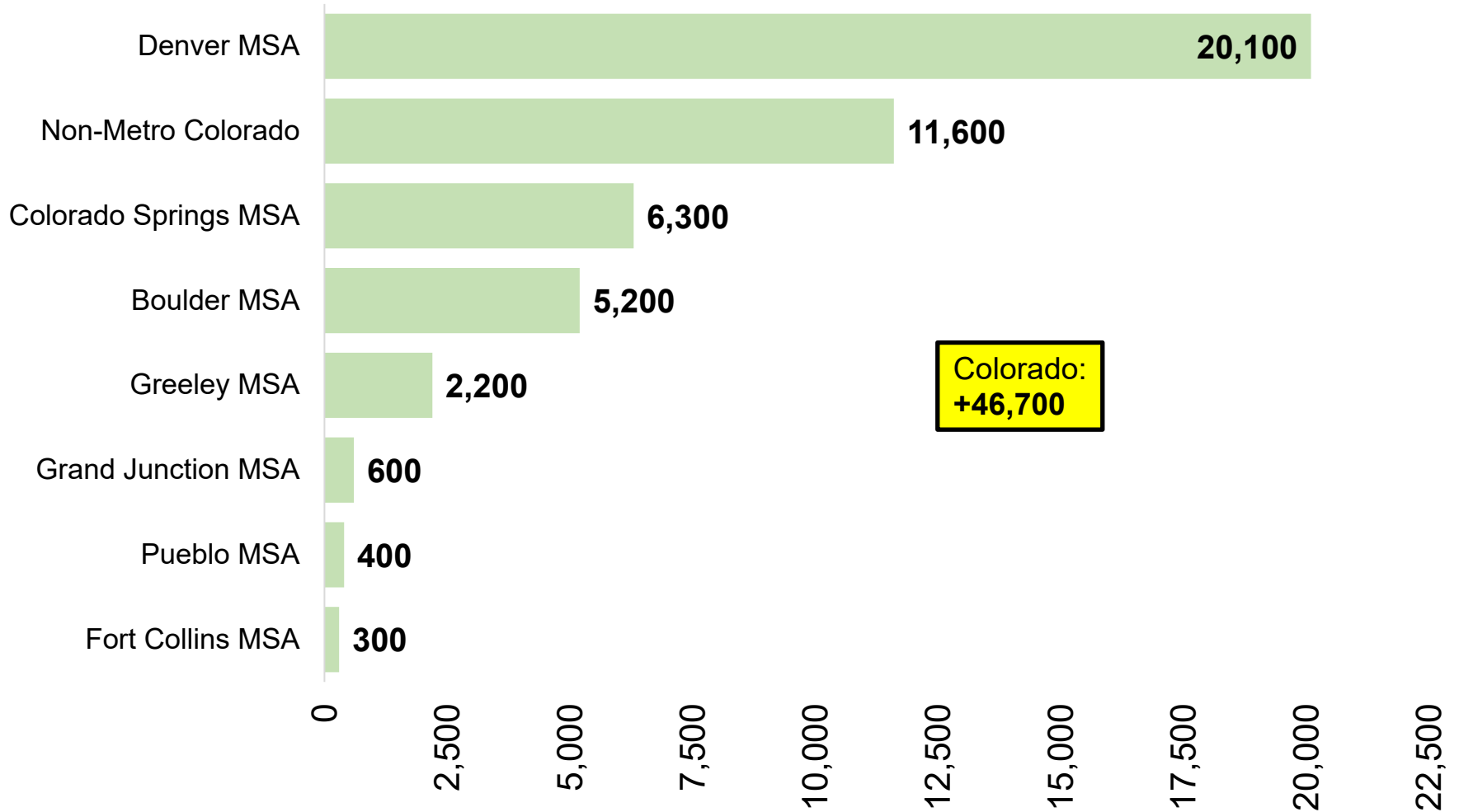
Source: Colorado Department of Labor and Employment; Bureau of Labor Statistics
 Data seasonally adjusted, February 2022 to February 2023

February 2023 Over the Year Growth Rates, by Industry Sector



Source: Colorado Department of Labor and Employment; Bureau of Labor Statistics
Data seasonally adjusted, February 2022 to February 2023

Change in Payroll Jobs Over Past 12 Months, by Colorado Substate Area

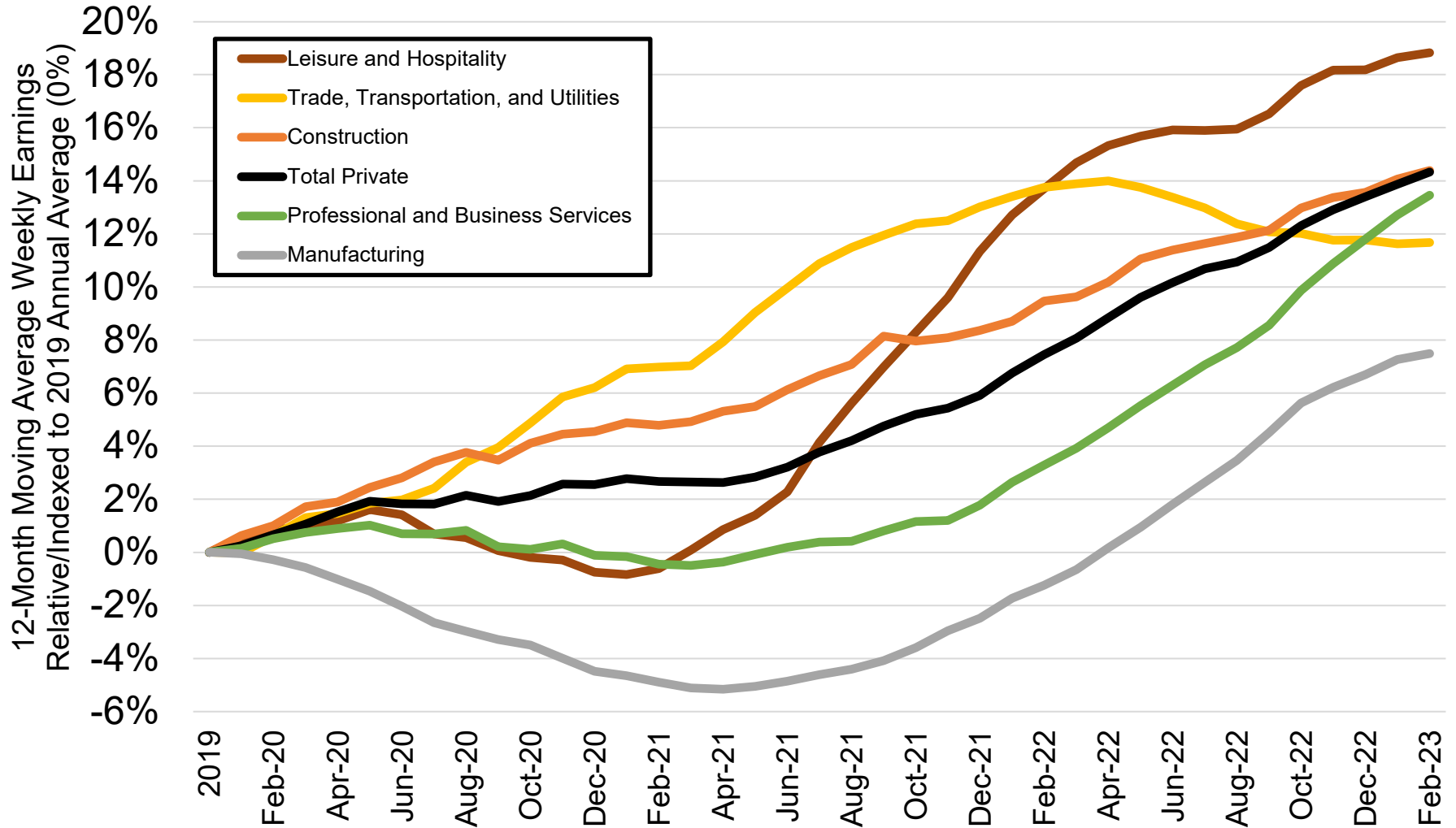


Source: Colorado Department of Labor and Employment; Bureau of Labor Statistics

Data seasonally adjusted, February 2022 to February 2023

Note: MSA = Metropolitan Statistical Area; Non-Metro Colorado = residual of state that is not an MSA (47 counties)

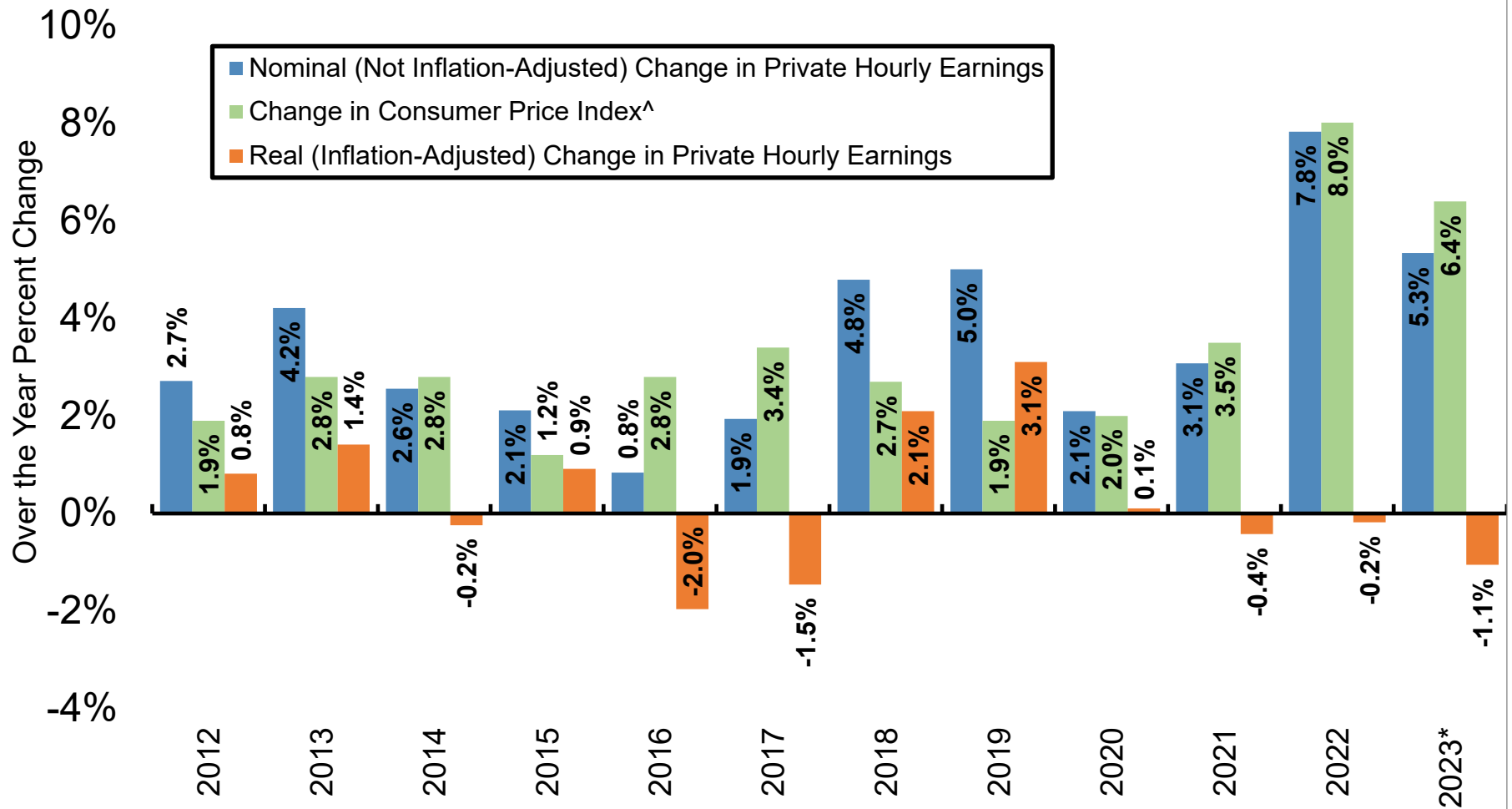
Percent Change in Average Weekly Earnings Since 2019, by Select Colorado Industry



Source: Colorado Department of Labor and Employment; Bureau of Labor Statistics

Data not seasonally adjusted. Note: each month on this chart represents a 12-month moving average and measures the percent change in average weekly earnings compared to the 2019 annual average for that industry.

Nominal and Real Percent Change in Colorado's Private Average Hourly Earnings Since 2012

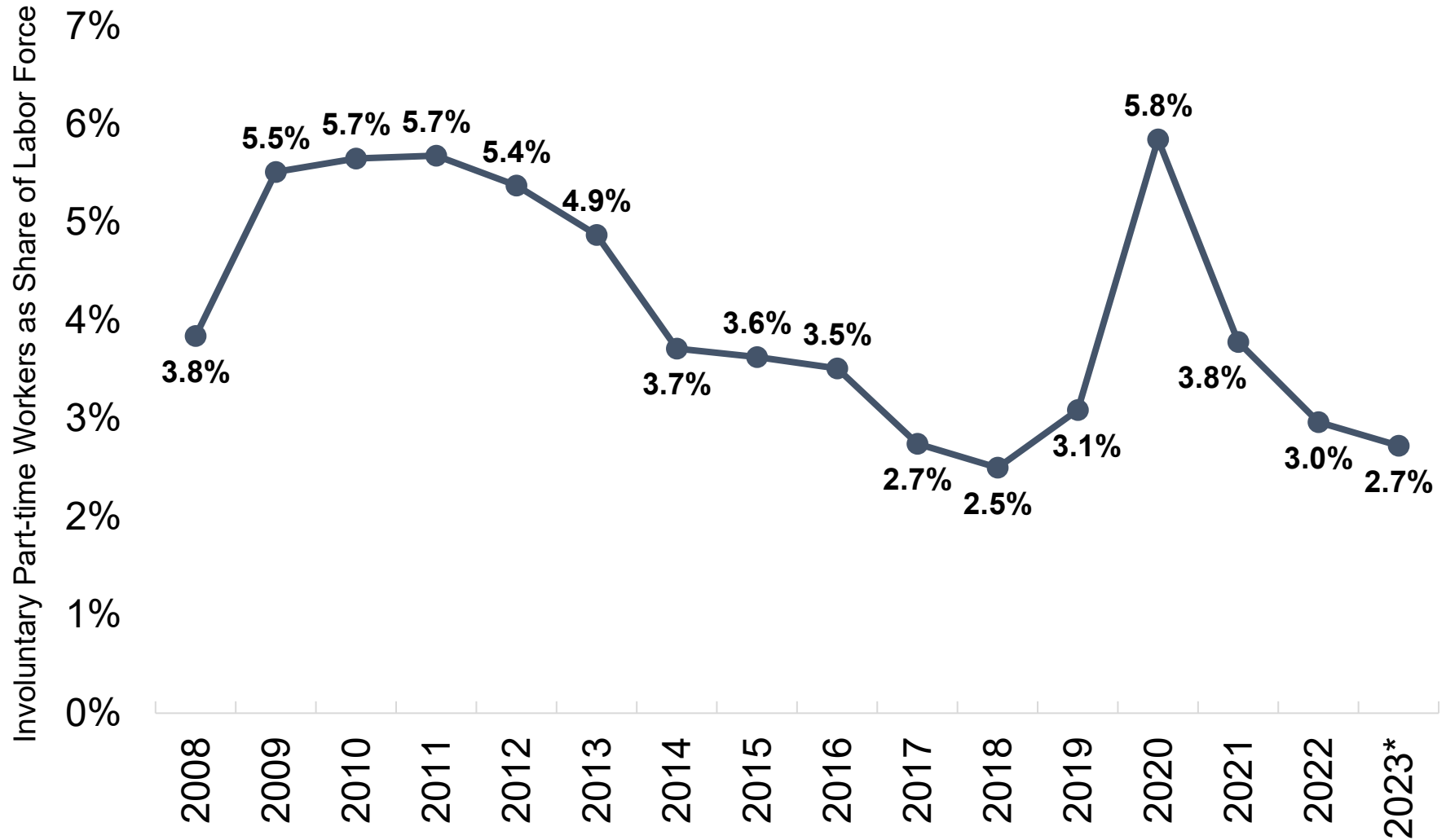


Source: Colorado Department of Labor and Employment estimates; Bureau of Labor Statistics

[^]Note: Denver-Aurora-Lakewood CPI-U estimates were utilized to adjust average hourly earnings for inflation.

That data is available here: <https://www.bls.gov/cpi/regional-resources.htm>. *2023 nominal earnings growth is measured using data for January and February compared to the same period the year prior, while real earnings were adjusted using the over-the-year change in CPI-U for January 2023.

Involuntary Part-Time Workers as Share of Labor Force

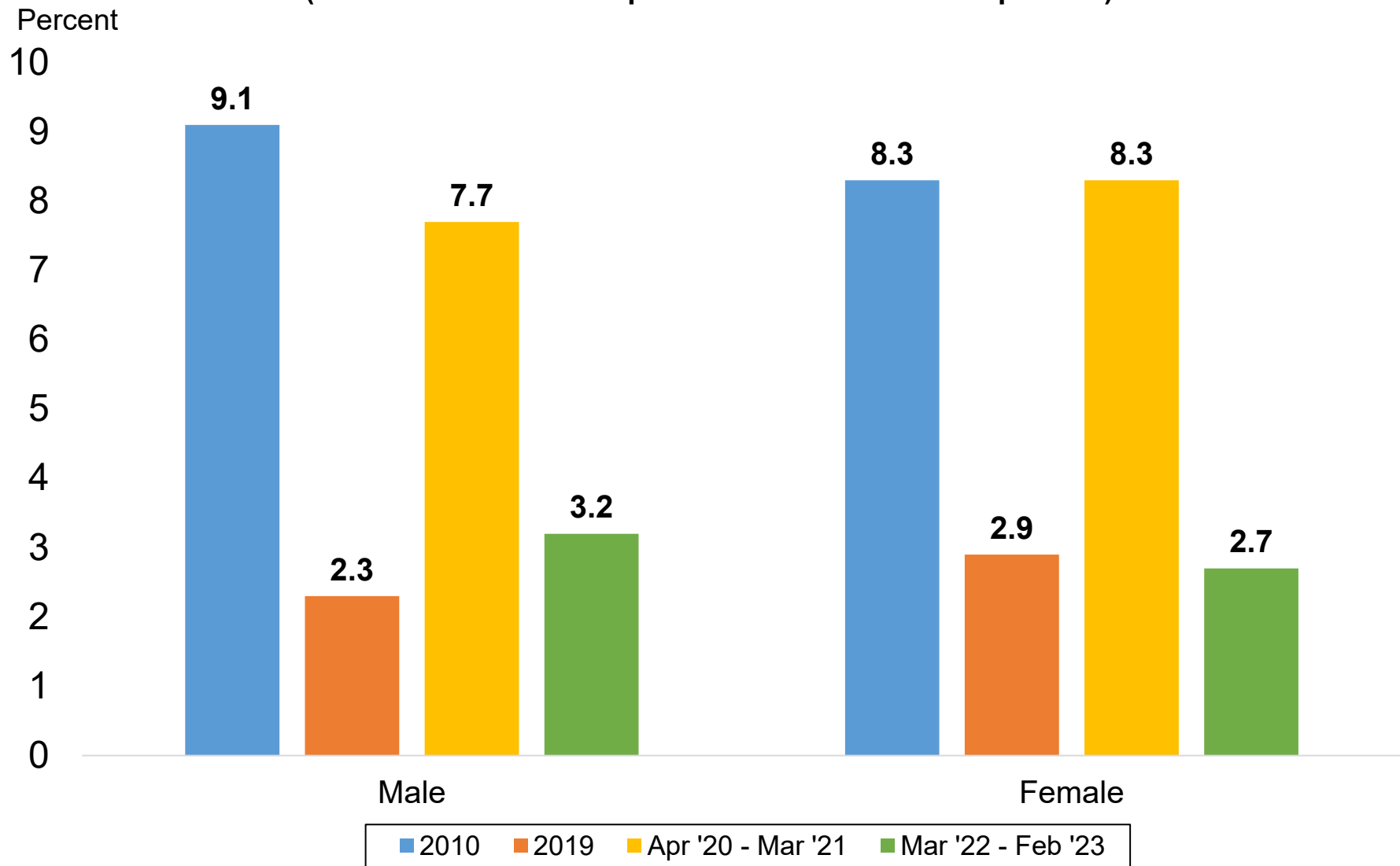


Source: Current Population Survey

Data not seasonally adjusted. Involuntary part-time workers are those individuals who are working part-time hours (34 hours or less), but prefer full-time hours (35+ hours).

*Average through the first two months of 2023.

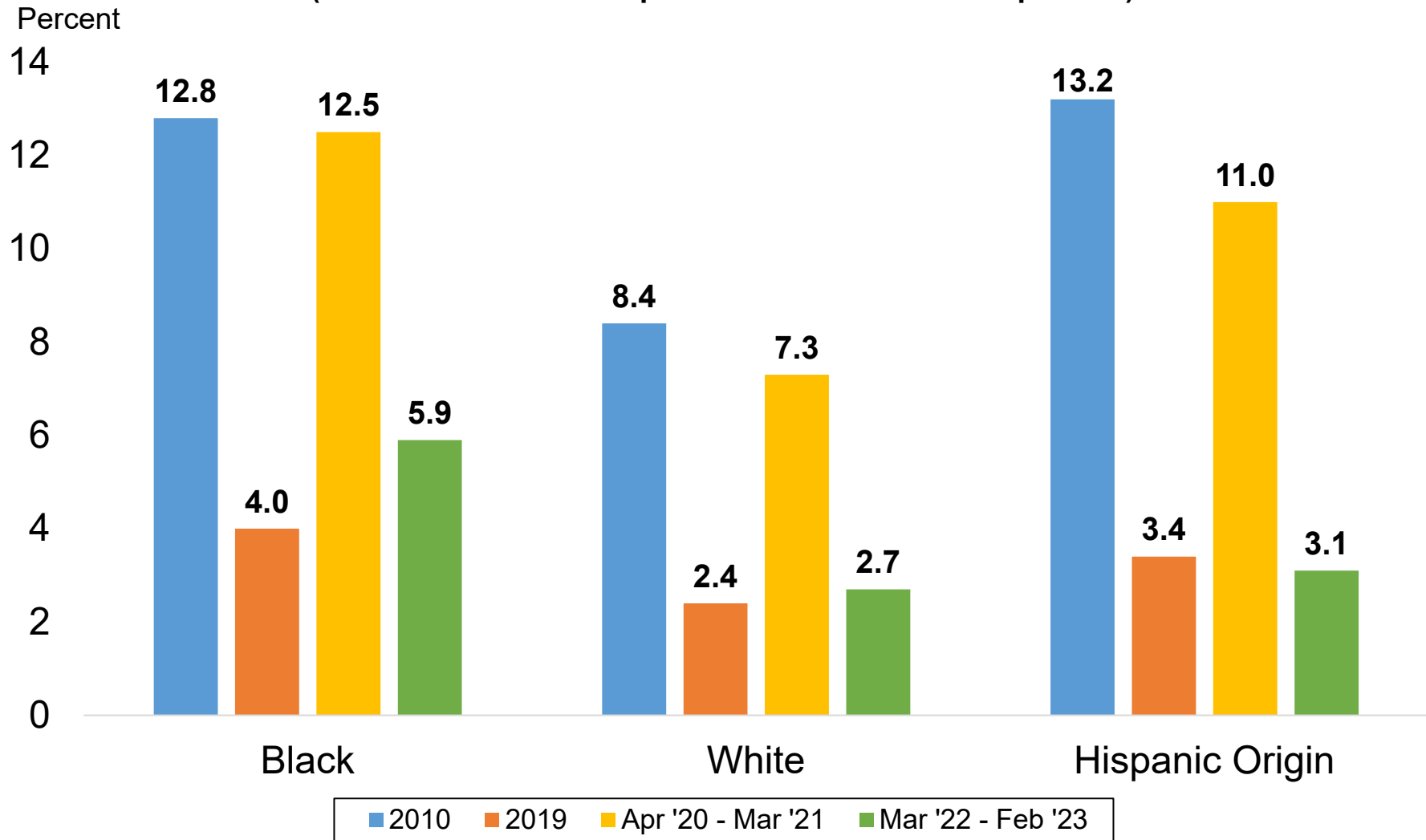
Unemployment Rates by Gender (Most recent 12-month period available vs. select periods)



Source: Current Population Survey

Data not seasonally adjusted. Unemployment rates by gender for individuals 16 years and older.

Unemployment Rates by Race & Ethnicity (Most recent 12-month period available vs. select periods)

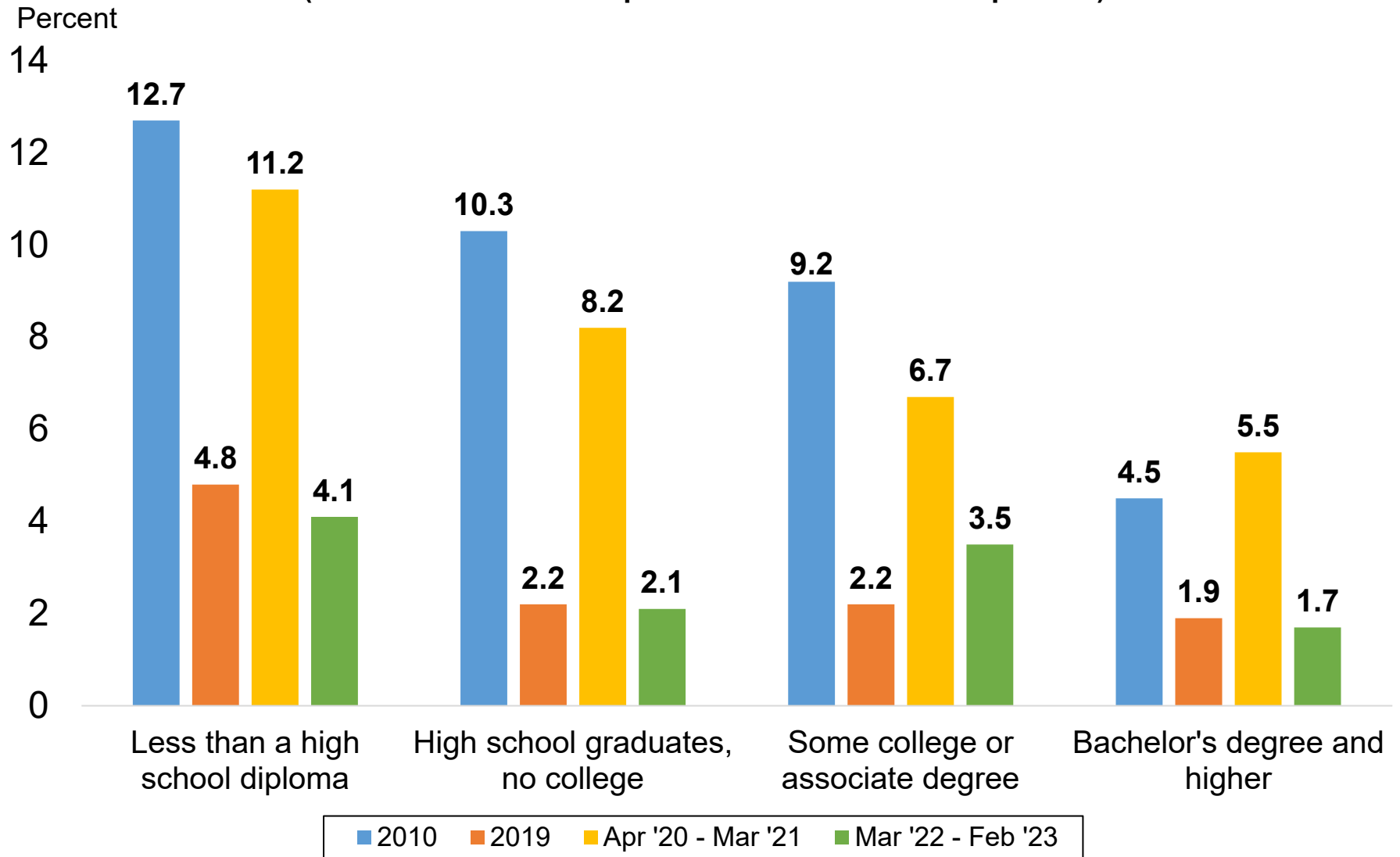


Source: Current Population Survey

Data not seasonally adjusted. Other race categories excluded due to small sample size. Hispanic origin category is not mutually exclusive (i.e. hispanic and non-hispanic ethnicities are represented in both race categories).

Unemployment Rates by Educational Attainment

(Most recent 12-month period available vs. select periods)

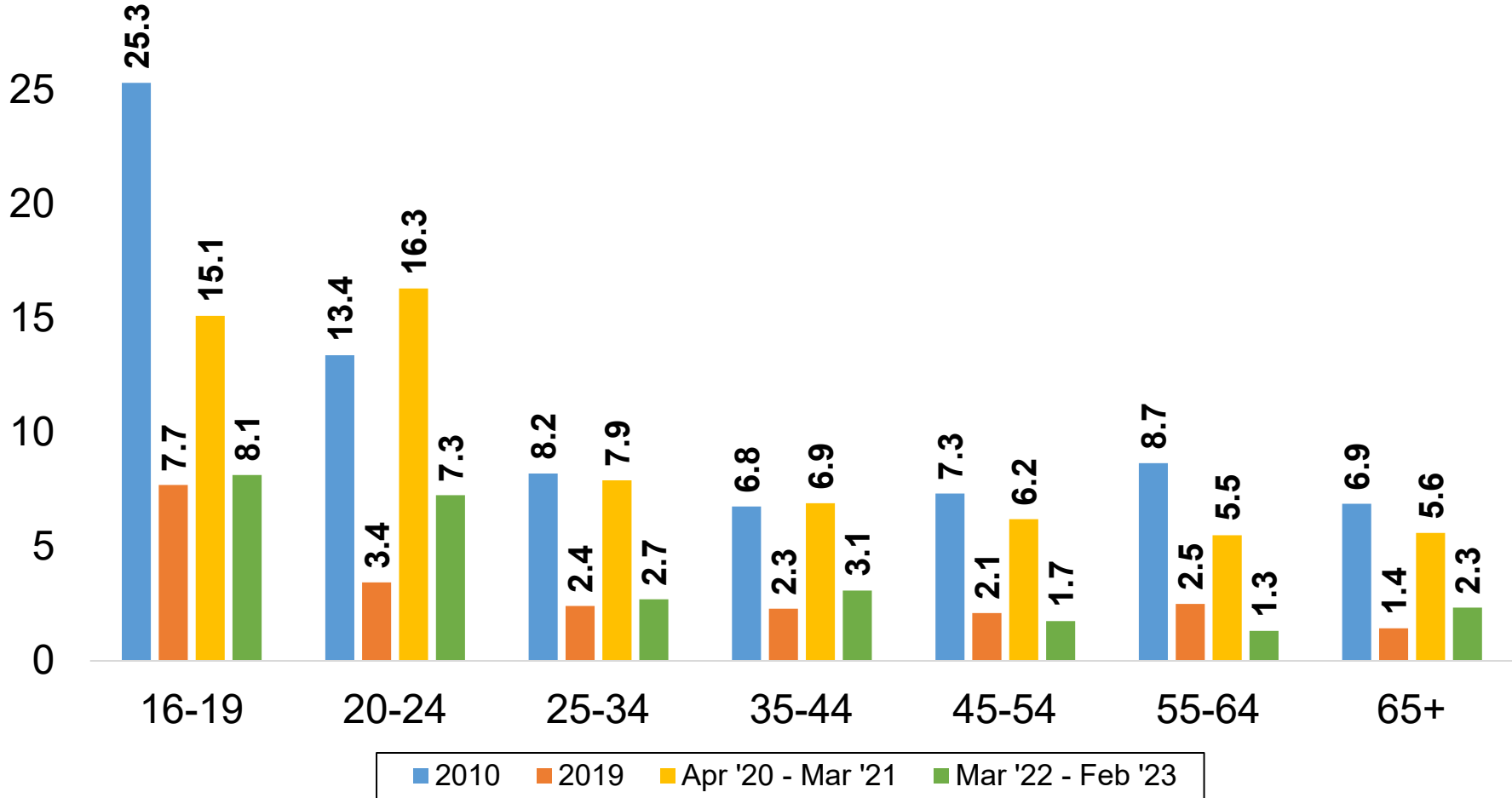


Source: Current Population Survey

Data not seasonally adjusted. Unemployment rates by educational attainment for individuals 25 years and over.

Unemployment Rates by Age Group (Most recent 12-month period available vs. select periods)

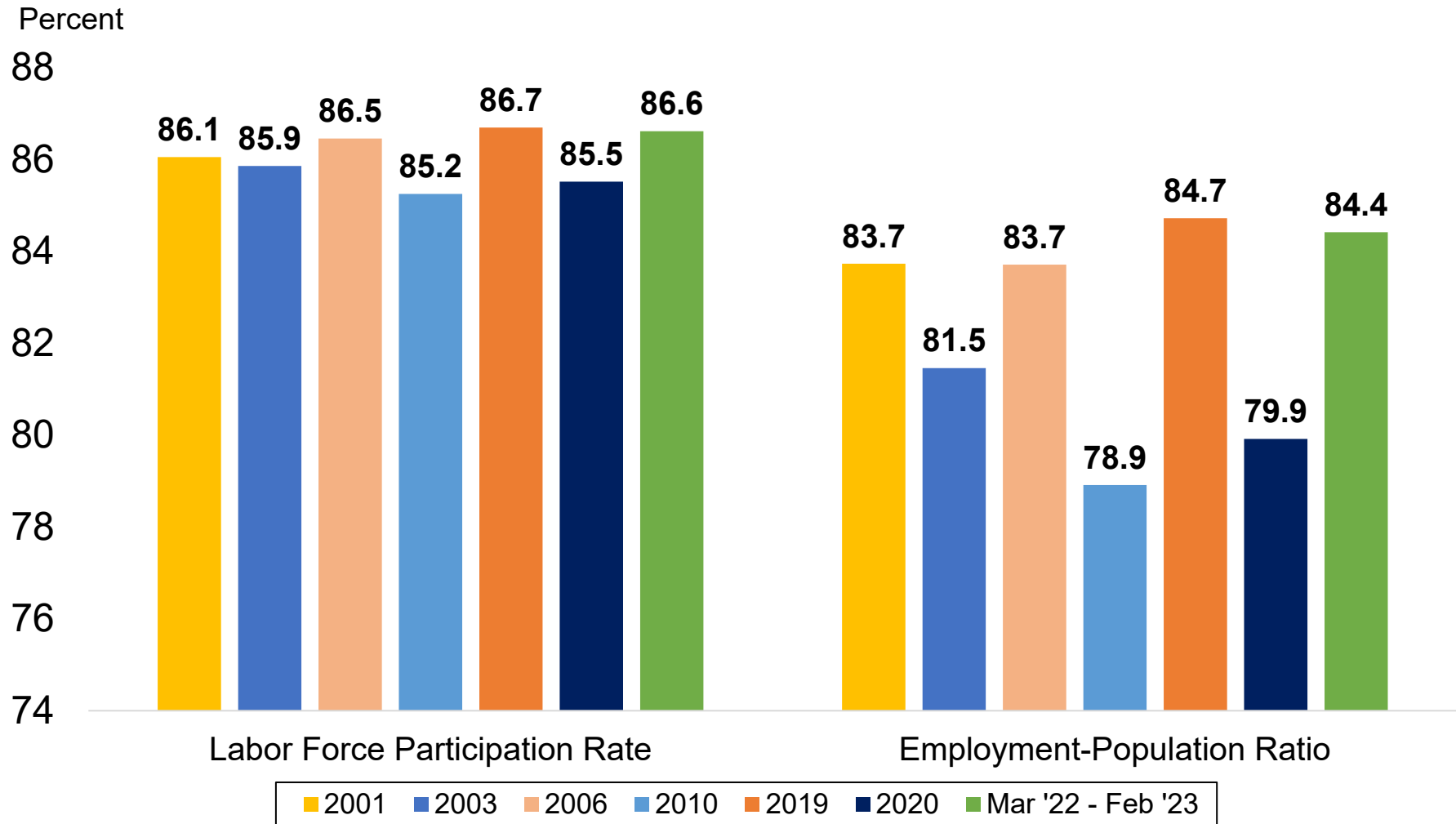
Percent
30



Source: Current Population Survey
Data not seasonally adjusted.

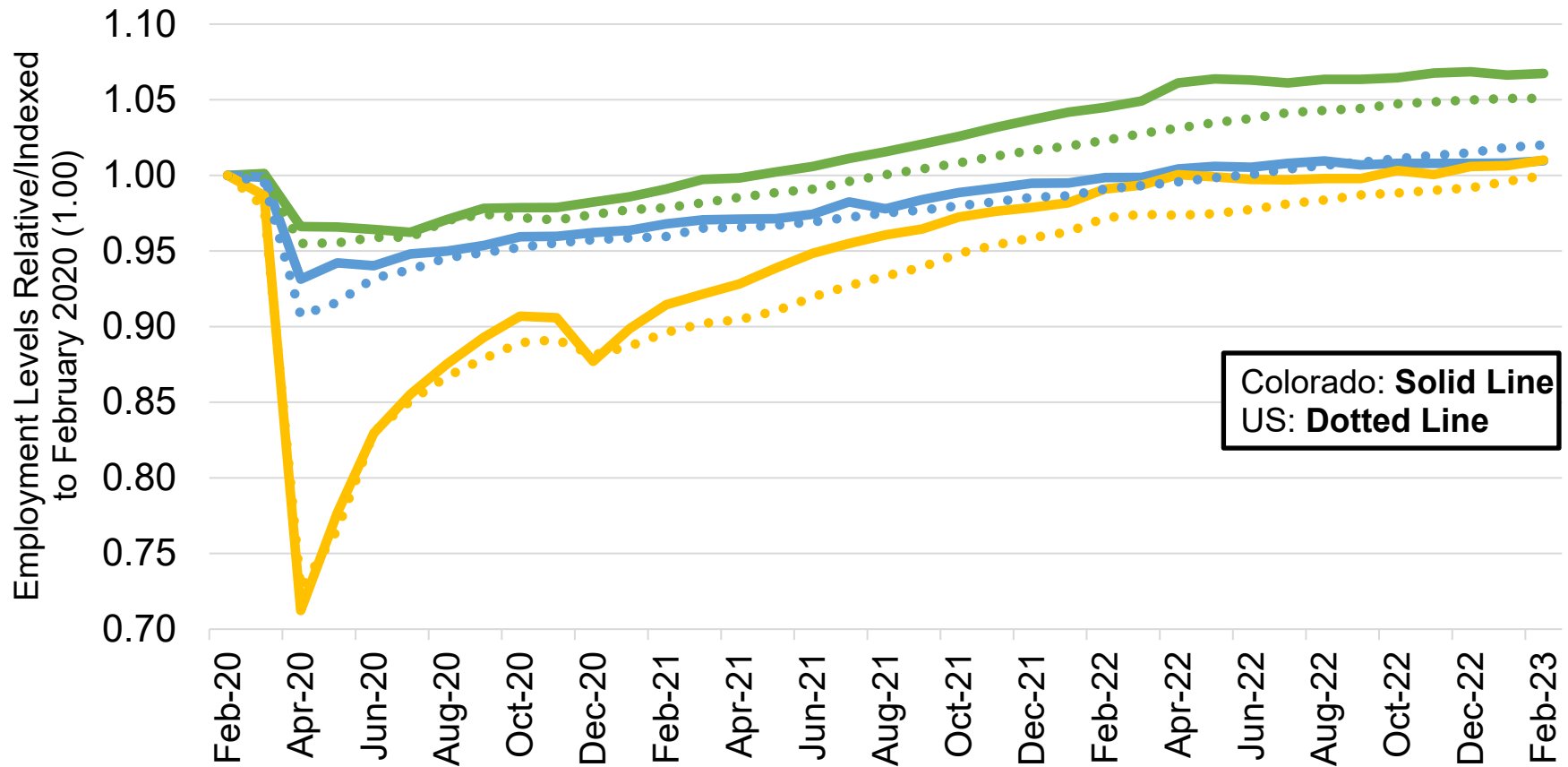
Colorado Labor Force Participation Rates and Employment-to-Population Ratios, Ages 25 to 54

(Most recent 12-month period available vs. select years)



Source: Current Population Survey
Data not seasonally adjusted.

Job Loss and Recovery by Low, Medium, and High Wage Industries (Colorado & U.S.)

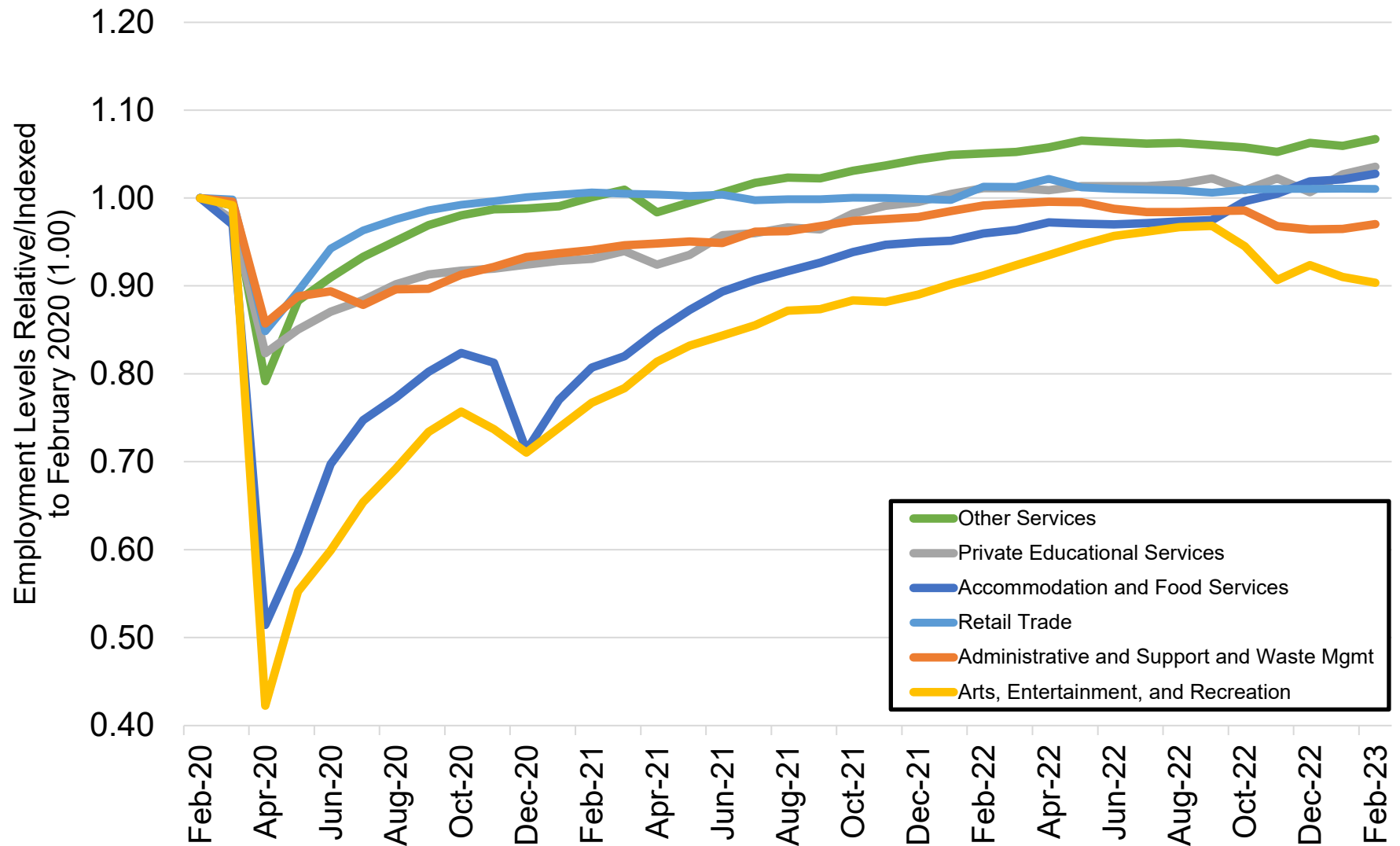


Source: Colorado Department of Labor and Employment; Bureau of Labor Statistics

Data seasonally adjusted. Note: low, medium, and high wage industries are determined by the 2019 state-level average weekly wage estimates from the Quarterly Census of Employment and Wages. **Low wage industries include:** retail trade; admin support/waste mgmt; private education services; arts, entertainment, and recreation; accommodation and food services; and other services. **Medium wage industries include:** construction; manufacturing; transportation, warehousing, and utilities; real estate, rental, and leasing; private health care and social assistance; state government; and local government.

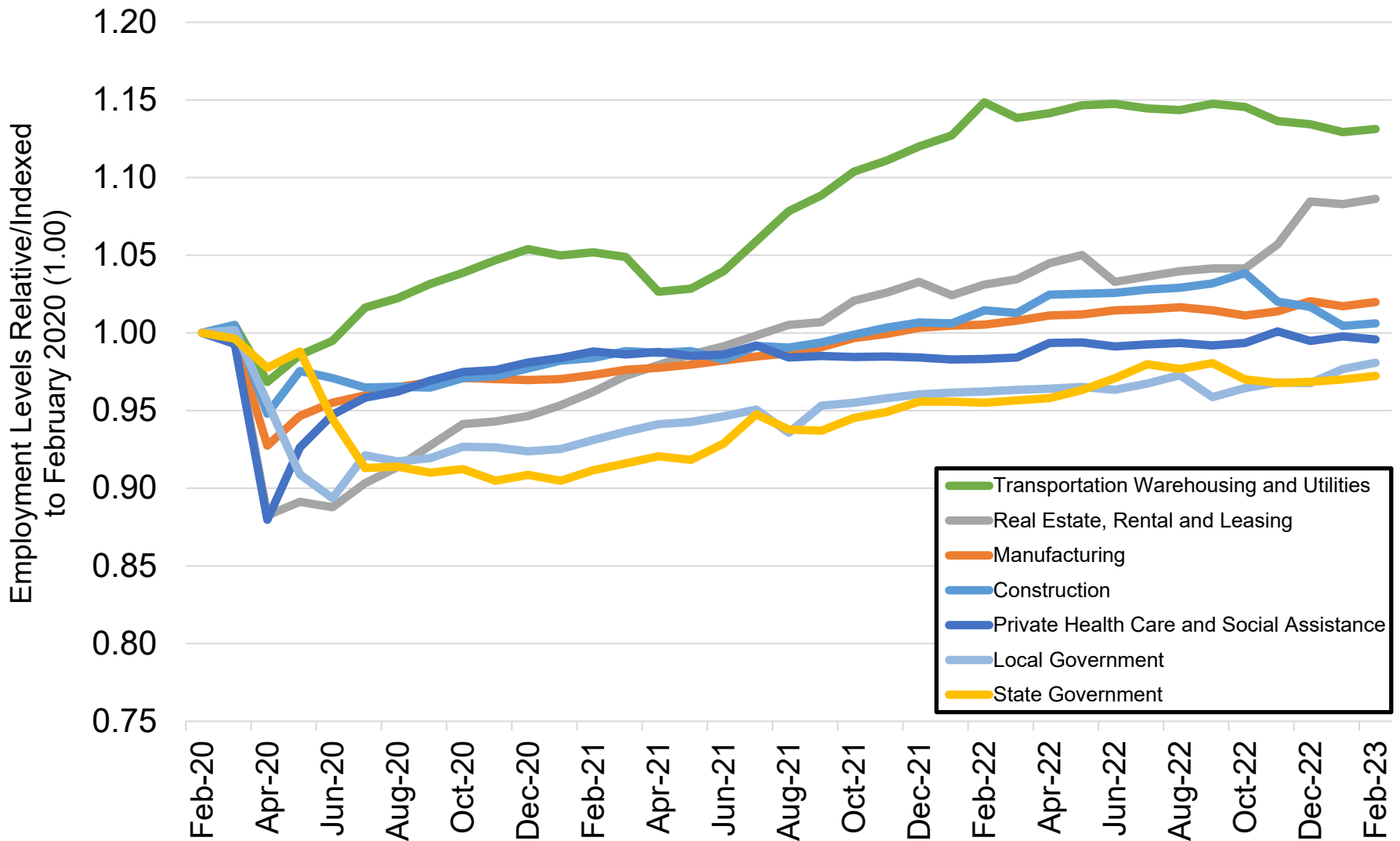
High wage industries include: mining and logging; wholesale trade; information; finance and insurance; professional and technical services; management of companies; and federal government.

Colorado Job Loss & Recovery by Low Wage Industries



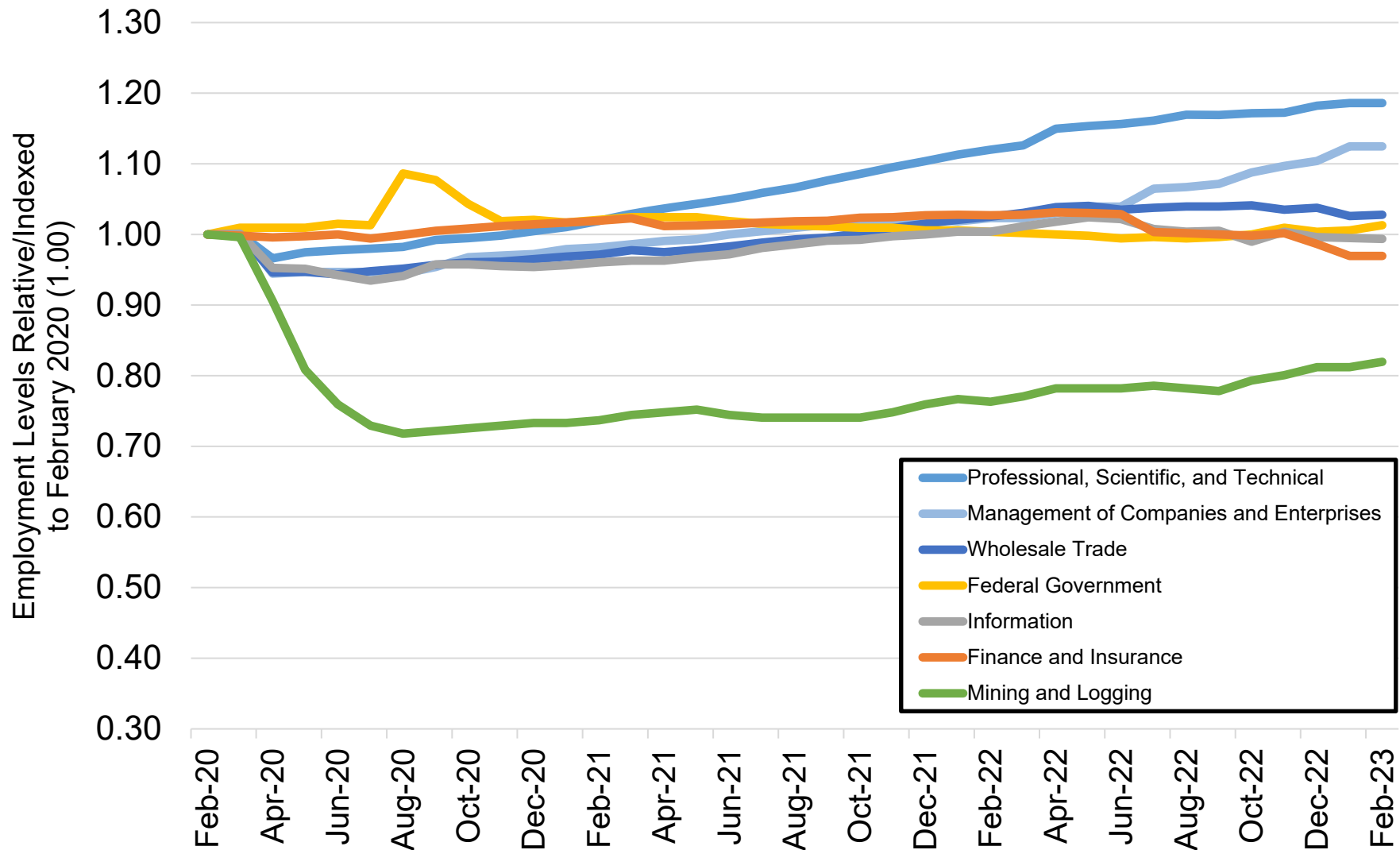
Source: Colorado Department of Labor and Employment; Bureau of Labor Statistics
 Data seasonally adjusted. Note: low wage industries are determined by the 2019 state-level average weekly wage estimates from the Quarterly Census of Employment and Wages.

Colorado Job Loss & Recovery by Medium Wage Industries



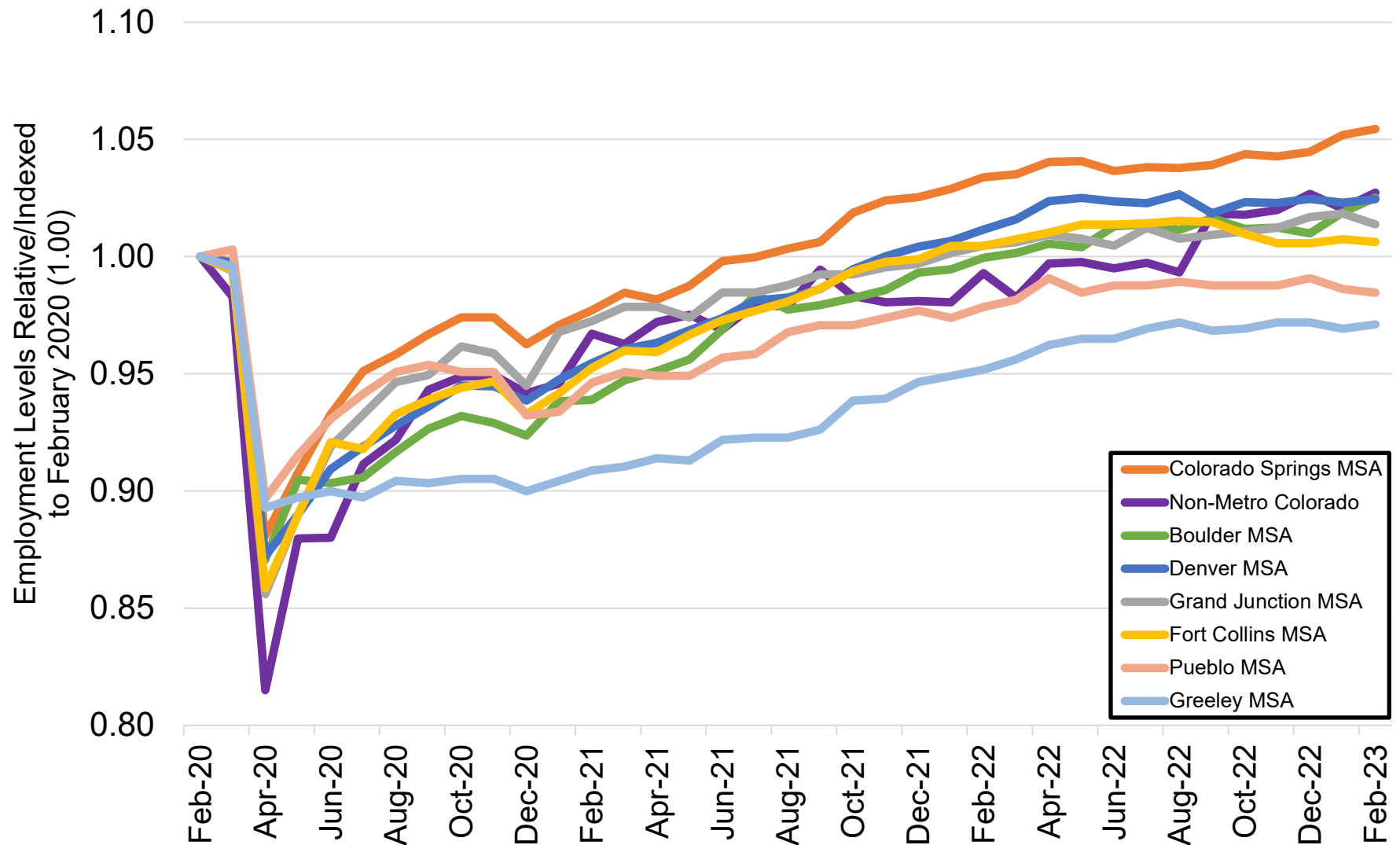
Source: Colorado Department of Labor and Employment; Bureau of Labor Statistics
 Data seasonally adjusted. Note: medium wage industries are determined by the 2019 state-level average weekly wage estimates from the Quarterly Census of Employment and Wages.

Colorado Job Loss & Recovery by High Wage Industries



Source: Colorado Department of Labor and Employment; Bureau of Labor Statistics
 Data seasonally adjusted. Note: high wage industries are determined by the 2019 state-level average weekly wage estimates from the Quarterly Census of Employment and Wages.

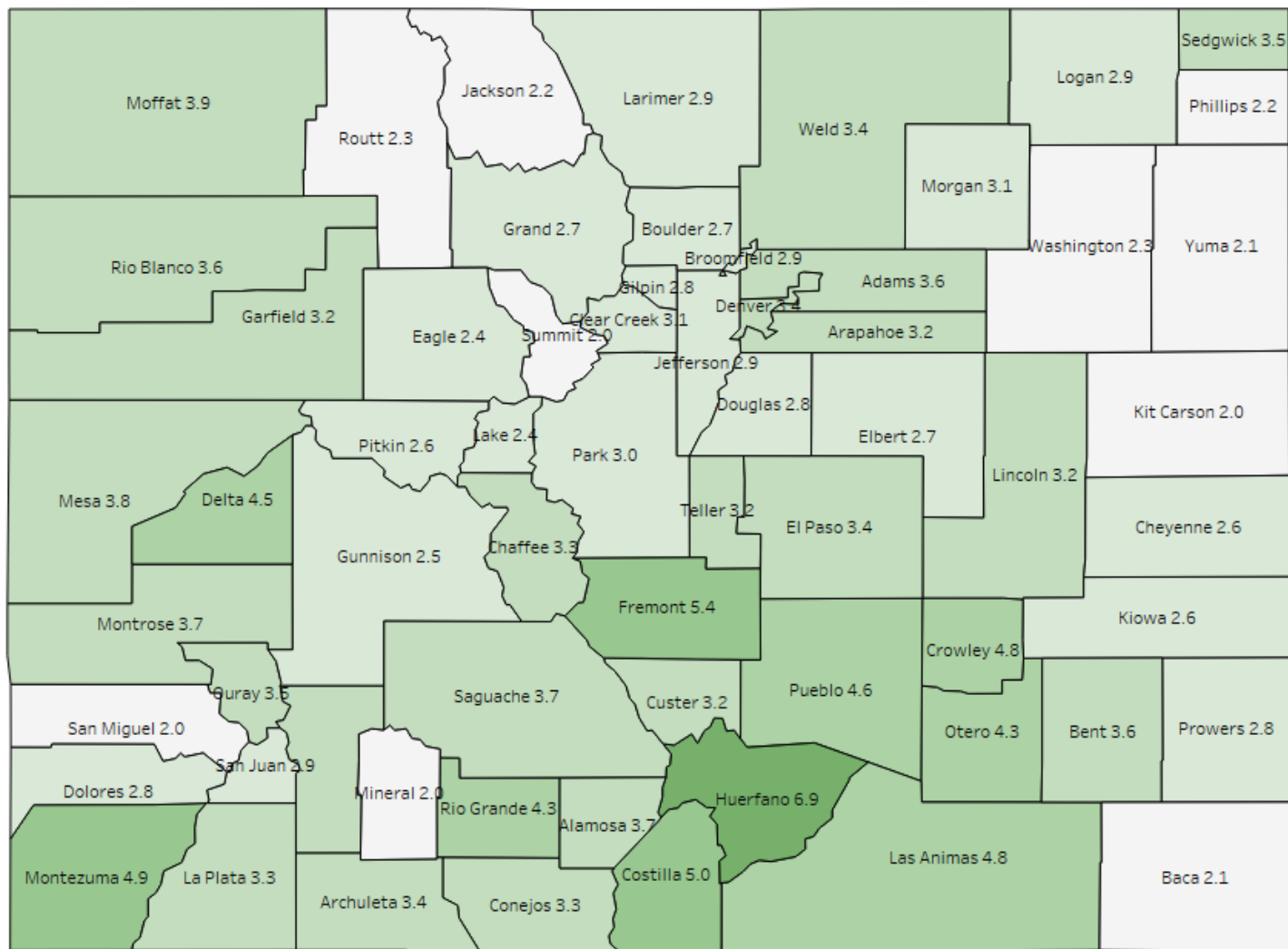
Colorado Job Loss & Recovery by Colorado Substate Area



Source: Colorado Department of Labor and Employment; Bureau of Labor Statistics

Data seasonally adjusted. Note: MSA = Metropolitan Statistical Area; Non-Metro Colorado = residual of state that is not an MSA (47 counties).

County Unemployment Rates February 2023



LABOR FORCE SUMMARY
COLORADO

Preliminary Estimates for February 2023

LABOR FORCE DATA (VALUES IN THOUSANDS)					
SEASONALLY ADJUSTED:				Change from last:	
	Feb-23	Jan-23	Feb-22	Month	Year
Total Civilian Labor Force	3,217.0	3,206.3	3,203.2	10.7	13.8
Unemployment	92.7	90.4	115.5	2.2	-22.8
Unemployment Rate (%)	2.9	2.8	3.6	0.1	-0.7
Employment	3,124.4	3,115.9	3,087.7	8.5	36.6
UNADJUSTED FOR SEASONALITY:				Change from last:	
	Feb-23	Jan-23	Feb-22	Month	Year
Total Civilian Labor Force	3,243.5	3,215.8	3,202.6	27.7	40.9
Unemployment	105.0	96.7	126.8	8.3	-21.8
Unemployment Rate (%)	3.2	3.0	4.0	0.2	-0.8
Employment	3,138.5	3,119.1	3,075.8	19.4	62.7

WAGE AND SALARY EMPLOYMENT DATA (VALUES IN THOUSANDS)					
SEASONALLY ADJUSTED:				Change from last:	
	Feb-23	Jan-23	Feb-22	Month	Year
Mining & Logging	21.8	21.6	20.3	0.2	1.5
Construction	180.1	179.8	181.6	0.3	-1.5
Manufacturing	154.5	154.1	152.3	0.4	2.2
Trade, Transportation, & Utilities	499.7	499.4	501.8	0.3	-2.1
Information	77.5	77.6	78.3	-0.1	-0.8
Financial Activities	177.7	177.5	181.3	0.2	-3.6
Professional & Business Services	492.6	491.7	475.6	0.9	17.0
Educational & Health Services	354.4	354.6	349.4	-0.2	5.0
Leisure & Hospitality	351.5	350.0	332.3	1.5	19.2
Other Services	124.1	123.2	122.2	0.9	1.9
Government	453.8	452.0	445.9	1.8	7.9
TOTAL NONAG	2,887.7	2,881.5	2,841.0	6.2	46.7
Labor Disputants	0.0	0.0	0.0	0.0	0.0
UNADJUSTED FOR SEASONALITY:				Change from last:	
	Feb-23	Jan-23	Feb-22	Month	Year
Mining & Logging	21.4	21.3	20.1	0.1	1.3
Construction	174.0	171.8	175.5	2.2	-1.5
Manufacturing	154.1	152.4	152.0	1.7	2.1
Trade, Transportation, & Utilities	498.3	500.3	499.3	-2.0	-1.0
Information	77.2	77.6	78.5	-0.4	-1.3
Financial Activities	176.3	178.2	180.8	-1.9	-4.5
Professional & Business Services	486.7	480.6	468.9	6.1	17.8
Educational & Health Services	354.2	353.5	350.0	0.7	4.2
Leisure & Hospitality	346.5	345.8	325.4	0.7	21.1
Other Services	122.9	121.7	120.3	1.2	2.6
Government	454.0	441.4	446.2	12.6	7.8
TOTAL NONAG	2,865.6	2,844.6	2,817.0	21.0	48.6
Labor Disputants	0.0	0.0	0.0	0.0	0.0

Source: Colorado Department of Labor & Employment; Bureau of Labor Statistics

Not Seasonally Adjusted Labor Force

	February 2023				January 2023			
	Labor Force	Employment	Unemployment	Rate	Labor force	Employment	Unemployment	Rate
Colorado	3,243,529	3,138,506	105,023	3.2	3,215,820	3,119,078	96,742	3.0
Metropolitan Statistical Area								
Boulder	206,377	200,726	5,651	2.7	203,090	198,081	5,009	2.5
Colorado Springs	380,235	367,315	12,920	3.4	376,871	364,893	11,978	3.2
Denver-Aurora-Lakewood	1,742,823	1,687,107	55,716	3.2	1,734,362	1,683,126	51,236	3.0
Fort Collins	210,919	204,721	6,198	2.9	208,630	202,986	5,644	2.7
Grand Junction	77,698	74,718	2,980	3.8	77,369	74,535	2,834	3.7
Greeley	171,012	165,136	5,876	3.4	168,556	163,175	5,381	3.2
Pueblo	76,988	73,437	3,551	4.6	76,467	73,130	3,337	4.4
Counties								
Adams	284,960	274,656	10,304	3.6	283,332	273,742	9,590	3.4
Alamosa	8,234	7,933	301	3.7	7,939	7,638	301	3.8
Arapahoe	378,869	366,855	12,014	3.2	377,249	366,126	11,123	2.9
Archuleta	6,950	6,713	237	3.4	6,841	6,621	220	3.2
Baca	2,009	1,967	42	2.1	1,921	1,884	37	1.9
Bent	1,759	1,696	63	3.6	1,676	1,620	56	3.3
Boulder	206,377	200,726	5,651	2.7	203,090	198,081	5,009	2.5
Broomfield	42,990	41,741	1,249	2.9	42,758	41,634	1,124	2.6
Chaffee	9,860	9,538	322	3.3	9,749	9,456	293	3.0
Cheyenne	1,005	979	26	2.6	963	941	22	2.3
Clear Creek	6,214	6,024	190	3.1	6,182	6,011	171	2.8
Conejos	3,960	3,828	132	3.3	3,777	3,656	121	3.2
Costilla	1,771	1,683	88	5.0	1,724	1,644	80	4.6
Crowley	1,390	1,323	67	4.8	1,342	1,283	59	4.4
Custer	2,325	2,250	75	3.2	2,268	2,192	76	3.4
Delta	12,922	12,346	576	4.5	12,544	12,018	526	4.2
Denver	441,365	426,446	14,919	3.4	439,280	425,559	13,721	3.1
Dolores	1,137	1,105	32	2.8	1,101	1,074	27	2.5
Douglas	210,188	204,243	5,945	2.8	209,060	203,774	5,286	2.5
Eagle	36,975	36,086	889	2.4	36,814	35,996	818	2.2
El Paso	366,529	354,051	12,478	3.4	363,269	351,687	11,582	3.2
Elbert	16,069	15,638	431	2.7	15,876	15,497	379	2.4
Fremont	14,172	13,402	770	5.4	14,113	13,405	708	5.0
Garfield	32,504	31,451	1,053	3.2	32,226	31,247	979	3.0
Gilpin	3,965	3,854	111	2.8	3,949	3,847	102	2.6
Grand	10,032	9,762	270	2.7	9,989	9,740	249	2.5
Gunnison	11,908	11,615	293	2.5	11,548	11,278	270	2.3
Hinsdale	386	373	13	3.4	387	373	14	3.6
Huerfano	2,404	2,238	166	6.9	2,372	2,199	173	7.3
Jackson	946	925	21	2.2	941	920	21	2.2
Jefferson	346,463	336,263	10,200	2.9	344,990	335,576	9,414	2.7
Kiowa	853	831	22	2.6	819	800	19	2.3
Kit Carson	4,151	4,070	81	2.0	3,932	3,858	74	1.9
La Plata	31,412	30,362	1,050	3.3	30,942	29,960	982	3.2
Lake	5,296	5,169	127	2.4	5,182	5,072	110	2.1
Larimer	210,919	204,721	6,198	2.9	208,630	202,986	5,644	2.7
Las Animas	6,001	5,711	290	4.8	5,779	5,499	280	4.8
Lincoln	2,158	2,088	70	3.2	2,095	2,032	63	3.0
Logan	10,226	9,933	293	2.9	9,808	9,539	269	2.7
Mesa	77,698	74,718	2,980	3.8	77,369	74,535	2,834	3.7
Mineral	541	530	11	2.0	534	524	10	1.9
Moffat	7,028	6,757	271	3.9	6,979	6,718	261	3.7
Montezuma	12,251	11,652	599	4.9	12,105	11,540	565	4.7
Montrose	21,355	20,574	781	3.7	20,907	20,149	758	3.6
Morgan	15,562	15,079	483	3.1	15,216	14,771	445	2.9
Otero	7,821	7,487	334	4.3	7,530	7,220	310	4.1
Ouray	2,413	2,329	84	3.5	2,432	2,352	80	3.3
Park	11,740	11,387	353	3.0	11,686	11,360	326	2.8
Phillips	2,347	2,295	52	2.2	2,206	2,158	48	2.2
Pitkin	11,037	10,752	285	2.6	10,980	10,715	265	2.4
Prowers	6,153	5,979	174	2.8	5,894	5,740	154	2.6
Pueblo	76,988	73,437	3,551	4.6	76,467	73,130	3,337	4.4
Rio Blanco	2,828	2,726	102	3.6	2,713	2,618	95	3.5
Rio Grande	5,171	4,948	223	4.3	4,979	4,750	229	4.6
Routt	16,894	16,500	394	2.3	16,718	16,356	362	2.2
Saguache	3,312	3,190	122	3.7	3,162	3,043	119	3.8
San Juan	550	534	16	2.9	539	524	15	2.8
San Miguel	6,383	6,253	130	2.0	6,309	6,185	124	2.0
Sedgwick	966	932	34	3.5	913	881	32	3.5
Summit	24,045	23,554	491	2.0	23,951	23,506	445	1.9
Teller	13,706	13,264	442	3.2	13,602	13,206	396	2.9
Washington	2,723	2,661	62	2.3	2,582	2,523	59	2.3
Weld	171,012	165,136	5,876	3.4	168,556	163,175	5,381	3.2
Yuma	5,351	5,237	114	2.1	5,034	4,936	98	1.9

All estimates made in cooperation with the U.S. Department of Labor, Bureau of Labor Statistics and adjusted to Current Population Survey data. Estimates have been revised to incorporate population data from the American Community Survey.

Estimates are subject to further revision through April 21, 2023 as the U.S. Department of Labor, Bureau of Labor Statistics completes the benchmarking process for 2022 estimates.

Not Seasonally Adjusted Labor Force

	February 2023				February 2022			
	Labor Force	Employment	Unemployment	Rate	Labor force	Employment	Unemployment	Rate
Colorado	3,243,529	3,138,506	105,023	3.2	3,202,616	3,075,775	126,841	4.0
Metropolitan Statistical Area								
Boulder	206,377	200,726	5,651	2.7	201,797	195,196	6,601	3.3
Colorado Springs	380,235	367,315	12,920	3.4	373,067	357,557	15,510	4.2
Denver-Aurora-Lakewood	1,742,823	1,687,107	55,716	3.2	1,724,125	1,657,031	67,094	3.9
Fort Collins	210,919	204,721	6,198	2.9	209,998	202,423	7,575	3.6
Grand Junction	77,698	74,718	2,980	3.8	76,779	73,257	3,522	4.6
Greeley	171,012	165,136	5,876	3.4	168,765	161,598	7,167	4.2
Pueblo	76,988	73,437	3,551	4.6	76,964	72,574	4,390	5.7
Counties								
Adams	284,960	274,656	10,304	3.6	282,367	269,865	12,502	4.4
Alamosa	8,234	7,933	301	3.7	8,108	7,736	372	4.6
Arapahoe	378,869	366,855	12,014	3.2	375,429	360,238	15,191	4.0
Archuleta	6,950	6,713	237	3.4	6,877	6,573	304	4.4
Baca	2,009	1,967	42	2.1	2,040	1,994	46	2.3
Bent	1,759	1,696	63	3.6	1,741	1,661	80	4.6
Boulder	206,377	200,726	5,651	2.7	201,797	195,196	6,601	3.3
Broomfield	42,990	41,741	1,249	2.9	42,395	40,984	1,411	3.3
Chaffee	9,860	9,538	322	3.3	9,566	9,205	361	3.8
Cheyenne	1,005	979	26	2.6	1,043	1,020	23	2.2
Clear Creek	6,214	6,024	190	3.1	6,155	5,919	236	3.8
Conejos	3,960	3,828	132	3.3	3,927	3,763	164	4.2
Costilla	1,771	1,683	88	5.0	1,746	1,648	98	5.6
Crowley	1,390	1,323	67	4.8	1,378	1,316	62	4.5
Custer	2,325	2,250	75	3.2	2,222	2,135	87	3.9
Delta	12,922	12,346	576	4.5	13,142	12,490	652	5.0
Denver	441,365	426,446	14,919	3.4	436,496	418,764	17,732	4.1
Dolores	1,137	1,105	32	2.8	1,117	1,071	46	4.1
Douglas	210,188	204,243	5,945	2.8	207,072	200,571	6,501	3.1
Eagle	36,975	36,086	889	2.4	36,075	34,903	1,172	3.2
El Paso	366,529	354,051	12,478	3.4	359,622	344,642	14,980	4.2
Elbert	16,069	15,638	431	2.7	15,938	15,439	499	3.1
Fremont	14,172	13,402	770	5.4	14,285	13,386	899	6.3
Garfield	32,504	31,451	1,053	3.2	31,467	30,183	1,284	4.1
Gilpin	3,965	3,854	111	2.8	3,931	3,786	145	3.7
Grand	10,032	9,762	270	2.7	9,794	9,458	336	3.4
Gunnison	11,908	11,615	293	2.5	11,359	11,005	354	3.1
Hinsdale	386	373	13	3.4	363	351	12	3.3
Huerfano	2,404	2,238	166	6.9	2,435	2,250	185	7.6
Jackson	946	925	21	2.2	906	876	30	3.3
Jefferson	346,463	336,263	10,200	2.9	342,748	330,261	12,487	3.6
Kiowa	853	831	22	2.6	872	850	22	2.5
Kit Carson	4,151	4,070	81	2.0	4,095	3,986	109	2.7
La Plata	31,412	30,362	1,050	3.3	30,253	28,975	1,278	4.2
Lake	5,296	5,169	127	2.4	4,982	4,818	164	3.3
Larimer	210,919	204,721	6,198	2.9	209,998	202,423	7,575	3.6
Las Animas	6,001	5,711	290	4.8	6,183	5,832	351	5.7
Lincoln	2,158	2,088	70	3.2	2,208	2,128	80	3.6
Logan	10,226	9,933	293	2.9	10,300	9,933	367	3.6
Mesa	77,698	74,718	2,980	3.8	76,779	73,257	3,522	4.6
Mineral	541	530	11	2.0	486	471	15	3.1
Moffat	7,028	6,757	271	3.9	6,943	6,639	304	4.4
Montezuma	12,251	11,652	599	4.9	12,159	11,502	657	5.4
Montrose	21,355	20,574	781	3.7	21,288	20,308	980	4.6
Morgan	15,562	15,079	483	3.1	15,539	14,897	642	4.1
Otero	7,821	7,487	334	4.3	7,887	7,479	408	5.2
Ouray	2,413	2,329	84	3.5	2,462	2,357	105	4.3
Park	11,740	11,387	353	3.0	11,594	11,204	390	3.4
Phillips	2,347	2,295	52	2.2	2,377	2,304	73	3.1
Pitkin	11,037	10,752	285	2.6	10,703	10,315	388	3.6
Prowers	6,153	5,979	174	2.8	6,077	5,845	232	3.8
Pueblo	76,988	73,437	3,551	4.6	76,964	72,574	4,390	5.7
Rio Blanco	2,828	2,726	102	3.6	2,779	2,639	140	5.0
Rio Grande	5,171	4,948	223	4.3	5,244	4,926	318	6.1
Routt	16,894	16,500	394	2.3	16,342	15,826	516	3.2
Saguache	3,312	3,190	122	3.7	3,324	3,170	154	4.6
San Juan	550	534	16	2.9	544	527	17	3.1
San Miguel	6,383	6,253	130	2.0	6,010	5,825	185	3.1
Sedgwick	966	932	34	3.5	1,046	1,009	37	3.5
Summit	24,045	23,554	491	2.0	23,225	22,583	642	2.8
Teller	13,706	13,264	442	3.2	13,445	12,915	530	3.9
Washington	2,723	2,661	62	2.3	2,754	2,671	83	3.0
Weld	171,012	165,136	5,876	3.4	168,765	161,598	7,167	4.2
Yuma	5,351	5,237	114	2.1	5,446	5,301	145	2.7

All estimates made in cooperation with the U.S. Department of Labor, Bureau of Labor Statistics and adjusted to Current Population Survey data. Estimates have been revised to incorporate population data from the American Community Survey.

Estimates are subject to further revision through April 21, 2023 as the U.S. Department of Labor, Bureau of Labor Statistics completes the benchmarking process for 2022 estimates.

Not Seasonally Adjusted Labor Force

	February 2023				January 2023			
	Labor Force	Employed	Unemployed	Rate	Labor Force	Employment	Unemployed	Rate
Select Cities in Colorado								
Arvada	71,660	69,582	2,078	2.9	71,285	69,438	1,847	2.6
Aurora	212,086	204,770	7,316	3.4	211,243	204,333	6,910	3.3
Boulder	69,149	67,293	1,856	2.7	67,979	66,406	1,573	2.3
Brighton	21,066	20,215	851	4.0	20,906	20,141	765	3.7
Castle Rock	39,794	38,609	1,185	3.0	39,571	38,520	1,051	2.7
Centennial	65,680	63,762	1,918	2.9	65,352	63,635	1,717	2.6
Colorado Springs	254,265	245,822	8,443	3.3	252,035	244,180	7,855	3.1
Commerce City	31,450	30,142	1,308	4.2	31,250	30,041	1,209	3.9
Englewood	22,099	21,388	711	3.2	21,981	21,345	636	2.9
Erie	18,848	18,367	481	2.6	18,555	18,138	417	2.2
Fort Collins	102,162	99,261	2,901	2.8	101,016	98,420	2,596	2.6
Fountain	13,920	13,407	513	3.7	13,779	13,317	462	3.4
Grand Junction	31,347	30,118	1,229	3.9	31,213	30,044	1,169	3.7
Greeley	52,532	50,563	1,969	3.7	51,774	49,962	1,812	3.5
Lafayette	18,447	17,968	479	2.6	18,205	17,731	474	2.6
Lakewood	90,515	87,553	2,962	3.3	90,148	87,374	2,774	3.1
Littleton	26,051	25,268	783	3.0	25,923	25,218	705	2.7
Longmont	58,503	56,698	1,805	3.1	57,557	55,952	1,605	2.8
Loveland	46,727	45,276	1,451	3.1	46,205	44,892	1,313	2.8
Northglenn	21,919	21,150	769	3.5	21,780	21,079	701	3.2
Parker	35,211	34,253	958	2.7	35,060	34,174	886	2.5
Pueblo	49,106	46,617	2,489	5.1	48,790	46,422	2,368	4.9
Thornton	84,761	82,077	2,684	3.2	84,324	81,804	2,520	3.0
Westminster	68,723	66,527	2,196	3.2	68,435	66,341	2,094	3.1
Wheat Ridge	17,823	17,204	619	3.5	17,745	17,169	576	3.2
Windsor	15,690	15,214	476	3.0	15,467	15,045	422	2.7

	February 2023				February 2022			
	Labor Force	Employed	Unemployed	Rate	Labor Force	Employment	Unemployed	Rate
Select Cities in Colorado								
Arvada	71,660	69,582	2,078	2.9	70,900	68,341	2,559	3.6
Aurora	212,086	204,770	7,316	3.4	210,597	201,089	9,508	4.5
Boulder	69,149	67,293	1,856	2.7	67,374	65,439	1,935	2.9
Brighton	21,066	20,215	851	4.0	20,848	19,859	989	4.7
Castle Rock	39,794	38,609	1,185	3.0	39,252	37,915	1,337	3.4
Centennial	65,680	63,762	1,918	2.9	64,668	62,612	2,056	3.2
Colorado Springs	254,265	245,822	8,443	3.3	249,470	239,289	10,181	4.1
Commerce City	31,450	30,142	1,308	4.2	31,109	29,616	1,493	4.8
Englewood	22,099	21,388	711	3.2	21,822	21,002	820	3.8
Erie	18,848	18,367	481	2.6	18,409	17,923	486	2.6
Fort Collins	102,162	99,261	2,901	2.8	101,547	98,147	3,400	3.3
Fountain	13,920	13,407	513	3.7	13,598	13,050	548	4.0
Grand Junction	31,347	30,118	1,229	3.9	30,954	29,529	1,425	4.6
Greeley	52,532	50,563	1,969	3.7	52,029	49,480	2,549	4.9
Lafayette	18,447	17,968	479	2.6	18,018	17,473	545	3.0
Lakewood	90,515	87,553	2,962	3.3	89,760	85,990	3,770	4.2
Littleton	26,051	25,268	783	3.0	25,776	24,812	964	3.7
Longmont	58,503	56,698	1,805	3.1	57,464	55,140	2,324	4.0
Loveland	46,727	45,276	1,451	3.1	46,553	44,768	1,785	3.8
Northglenn	21,919	21,150	769	3.5	21,753	20,780	973	4.5
Parker	35,211	34,253	958	2.7	34,675	33,637	1,038	3.0
Pueblo	49,106	46,617	2,489	5.1	49,117	46,070	3,047	6.2
Thornton	84,761	82,077	2,684	3.2	83,811	80,645	3,166	3.8
Westminster	68,723	66,527	2,196	3.2	67,879	65,355	2,524	3.7
Wheat Ridge	17,823	17,204	619	3.5	17,741	16,897	844	4.8
Windsor	15,690	15,214	476	3.0	15,445	14,922	523	3.4

All estimates made in cooperation with the U.S. Department of Labor, Bureau of Labor Statistics and adjusted to Current Population Survey data. Estimates have been revised to incorporate population data from the American Community Survey. Estimates are subject to further revision through April 21, 2023 as the U.S. Department of Labor, Bureau of Labor Statistics completes the benchmarking process for 2022 estimates. Colorado Department of Labor and Employment 2023

Colorado LMI Data Overview

February 2023

Employment					
	Feb-23	Jan-23	Feb-22	Change from previous:	
				Period	Year
Nonfarm Wage and Salary Employment (SA)	2,887,700	2,881,500	2,841,000	6,200	46,700
Total Resident Employment (SA)	3,124,400	3,115,900	3,087,700	8,500	36,700
	Q2 2022	Q1 2022	Q2 2021		
UI Covered Total Employment	2,821,406	2,756,407	2,686,561	64,999	134,845
UI Covered Private Employment	2,389,121	2,332,408	2,262,701	56,713	126,420

Unemployment					
	Feb-23	Jan-23	Feb-22	Change from previous:	
				Period	Year
Unemployment (SA)	92,700	90,400	115,500	2,300	(22,800)
Percent Unemployed (SA)	2.9%	2.8%	3.6%	0.1	(0.7)
	Feb-23	Jan-23	Feb-22		
Initial Claims	11,766	17,177	12,756	(5,411)	(990)
Continued Weeks Claimed	172,794	112,006	106,848	60,788	65,946

Wages and Earnings					
	Q2 2022	Q1 2022	Q2 2021	Change from previous:	
				Period	Year
Total Average Weekly Wage	\$1,361	\$1,455	\$1,283	(\$94)	\$78
Private Average Weekly Wage	\$1,379	\$1,494	\$1,298	(\$115)	\$81
	Feb-23	Jan-23	Feb-22		
Average Weekly Earnings (Construction)	\$1,231.58	\$1,187.96	\$1,196.52	\$43.62	\$35.06
Average Weekly Earnings (Manufacturing)	\$1,126.75	\$1,148.40	\$1,020.55	(\$21.65)	\$106.20

CO Unemployment Insurance Trust Fund					
	Jan-23	Dec-22	Jan-22	Change from previous:	
				Period	Year
Employer Contributions	\$40,832,184	\$5,520,474	\$23,832,291	\$35,311,709	\$16,999,893
Benefits Paid	\$46,718,114	\$38,165,313	\$33,746,389	\$8,552,802	\$12,971,725
Average Weekly Benefit Amount	\$547.04	\$539.68	\$434.72	\$7.36	\$112.32
Duration (weeks)	11.22	10.97	14.73	0.26	(3.50)
Outstanding Title XII Loan Balance	\$4,825,320	\$0	\$1,013,089,861	\$4,825,320	(1,008,264,541)

Consumer Price Index for All Urban Consumers					
Not seasonally adjusted	Jan-23	Nov-22	Jan-22	% Change from previous:	
				Period	Year
Denver-Aurora-Lakewood	312.392	309.655	293.580	0.9%	6.4%
US City Average	299.170	297.711	281.148	0.5%	6.4%

(Most current data available for all categories)