

PRESS RELEASE

Colorado Department of Labor and Employment • 633 17th Street, Suite 1200 • Denver, CO 80202 • (303) 318-8004 • Fax: (303) 318-8070

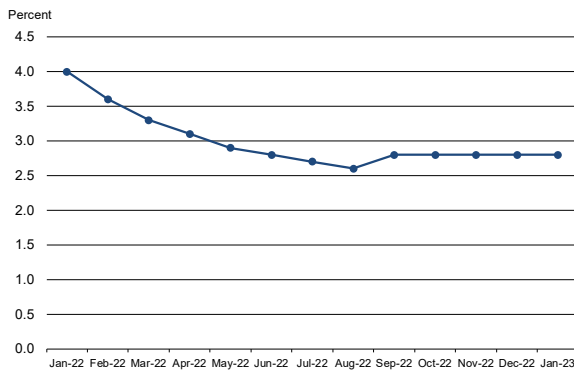
For Immediate Release

Date: March 13, 2023/ 8:00 A.M.
Contact: Office of Government, Policy and Public Relations
Email: cdle_pr@state.co.us
Web: www.colmigateway.com

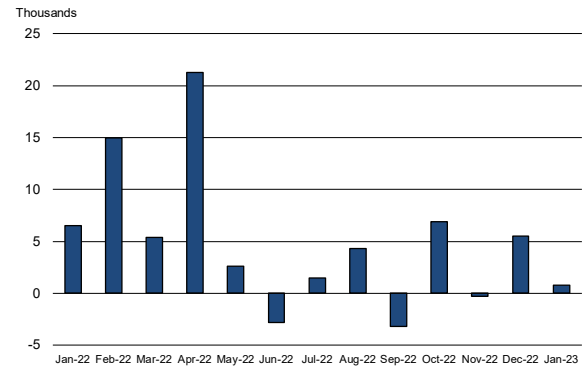
Colorado Employment Situation – January 2023

Unemployment Rate Has Returned to Pre-Pandemic Levels; 800 Nonfarm Payroll Jobs Added in January

Colorado unemployment rate, seasonally adjusted
January 2022 - January 2023



Colorado nonfarm payroll employment over-the-month
change, seasonally adjusted, January 2022 - January
2023



Household survey data

- According to the survey of households, Colorado's seasonally adjusted **unemployment rate** was unchanged in January compared to the revised December rate of 2.8 percent. The **number of unemployed individuals** rose by 1,300 over the same time period to 90,400. As revised, Colorado's unemployment rate has remained below 3.0 percent for nine consecutive months and has returned to pre-pandemic levels. The national unemployment rate declined by one-tenth of a percentage point to 3.4 percent, a 54-year low.
- Colorado's **labor force** increased by 8,000 in January to 3,206,400. The share of Coloradans participating in the labor force rose slightly to 68.1 percent in January, compared to 68.0 percent the month prior. The U.S. labor force participation rate was 62.4 percent in January, also increasing one-tenth of a percentage point from the month prior.
- The **number of individuals employed** in Colorado grew by 6,700 in January to 3,115,900, which represents 66.2 percent of the state's 16+ population. The rate of 66.2 percent is three-tenths of a percentage point higher than a year ago. The national employment-to-population ratio was 60.2 percent in January.

Establishment survey data

Employers in Colorado added 800 **nonfarm payroll jobs** from December to January for a total of 2,883,000 jobs, according to the survey of business establishments. Private sector payroll jobs were unchanged in January and government added 800 jobs. After annual revisions and the January gain of 800, Colorado has added 438,800 nonfarm payroll jobs over the past 33 months, compared to losses totaling 376,900 in March and April 2020. That translates to a **job recovery rate** of 116.4 percent, which exceeds the U.S. rate of 112.3 percent.

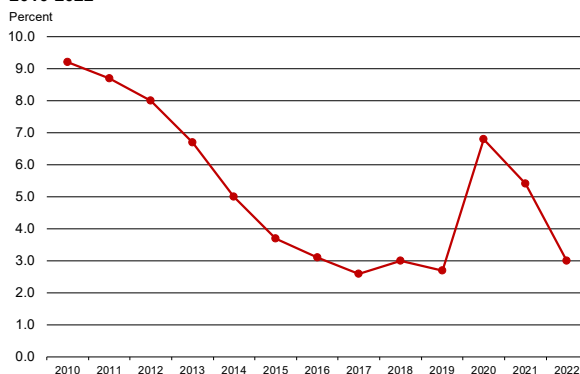
Since May 2020, Colorado's **private sector** has grown by 436,100 jobs, compared to declines of 362,100 in early 2020. That translates to a **job recovery rate** of 120.4 percent, compared to the national rate of 115.2 percent.

Other highlights from the establishment survey:

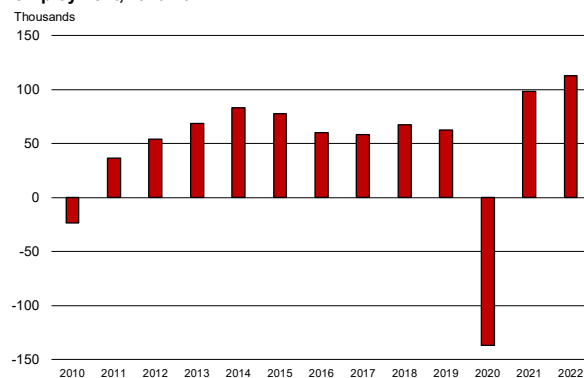
- **Private industry sectors with significant job gains** in January were: educational and health services (~2,200) and professional and business services (~1,300). Significant over the month private sector **job loss** occurred in financial activities (~1,300) and construction (~1,100).
- **Since January 2022**, nonfarm payroll jobs have increased 57,000, with the private sector growing by 52,900 and government adding 4,100 jobs. The largest **private sector job gains** were in leisure and hospitality (~20,000), professional and business services (~18,400), and trade, transportation, and utilities (~6,200). During that same period financial activities (~2,700) and information (~900) **payroll jobs declined**. Colorado's **rate of job growth** over the past year is 2.0 percent, lagging the U.S. rate of 3.3 percent.
- Over the year, the **average workweek** for all Colorado employees on private nonfarm payrolls decreased from 33.5 to 33.4 hours, while **average hourly earnings** grew from \$34.18 to \$36.14, over three dollars more than the national average hourly earnings of \$33.03.

Annual averages and benchmark revisions to 2022 data

Colorado unemployment rate, annual averages, 2010-2022



Colorado change in annual average nonfarm payroll employment, 2010-2022



The **annual unemployment rate** for Colorado was 3.0 percent in 2022, revised down from the previously published 3.6 percent. The U.S. unemployment rate in 2022 was 3.6 percent.

Colorado **nonfarm payroll employment increased at an annual rate** of 4.1 percent in 2022, or 112,800 jobs. The U.S. annual payroll jobs growth rate in 2022 was 4.3 percent.

In accordance with annual practice, both establishment and household survey data estimates for Colorado undergo a benchmarking process. The benchmark process results in revisions to estimates for prior years. Below are select revisions to 2022 establishment and household survey estimates. More information on the benchmarking process is available at <https://www.bls.gov/opub/hom/topic/benchmarking.htm>.

**Table A. Revisions to Colorado Total Nonfarm Employment, January to December 2022
(Seasonally Adjusted)**

Month	Level			Over-the-Month Change		
	As Revised	As Previously Published	Difference	As Revised	As Previously Published	Difference
January	2,826,000	2,812,800	13,200	6,500	6,000	500
February	2,841,000	2,828,700	12,300	15,000	15,900	-900
March	2,846,400	2,834,000	12,400	5,400	5,300	100
April	2,867,700	2,850,000	17,700	21,300	16,000	5,300
May	2,870,300	2,852,900	17,400	2,600	2,900	-300
June	2,867,500	2,860,700	6,800	-2,800	7,800	-10,600
July	2,869,000	2,862,600	6,400	1,500	1,900	-400
August	2,873,300	2,877,200	-3,900	4,300	14,600	-10,300
September	2,870,100	2,883,100	-13,000	-3,200	5,900	-9,100
October	2,877,000	2,897,600	-20,600	6,900	14,500	-7,600
November	2,876,700	2,902,900	-26,200	-300	5,300	-5,600
December (p)	2,882,200	2,911,500	-29,300	5,500	8,600	-3,100
Annual Average	2,863,933	2,864,500	-567	5,225	8,725	-3,500

(p) = preliminary

**Table B. Revisions to Colorado Select Labor Force Measures, January to December 2022
(Seasonally Adjusted)**

Month	Level								
	Number Unemployed			Number Employed			Number in the Labor Force		
	As Revised	As Previously Published	Difference	As Revised	As Previously Published	Difference	As Revised	As Previously Published	Difference
January	127,009	132,294	-5,285	3,072,499	3,055,113	17,386	3,199,508	3,187,407	12,101
February	115,466	127,172	-11,706	3,087,732	3,072,172	15,560	3,203,198	3,199,344	3,854
March	104,801	118,501	-13,700	3,100,075	3,093,476	6,599	3,204,876	3,211,977	-7,101
April	98,579	116,483	-17,904	3,108,954	3,108,883	71	3,207,533	3,225,366	-17,833
May	94,133	114,509	-20,376	3,113,493	3,126,055	-12,562	3,207,626	3,240,564	-32,938
June	90,170	111,682	-21,512	3,113,910	3,137,097	-23,187	3,204,080	3,248,779	-44,699
July	86,888	107,471	-20,583	3,111,015	3,142,810	-31,795	3,197,903	3,250,281	-52,378
August	83,483	111,878	-28,395	3,107,150	3,146,008	-38,858	3,190,633	3,257,886	-67,253
September	88,338	109,591	-21,253	3,104,869	3,145,390	-40,521	3,193,207	3,254,981	-61,774
October	90,735	116,324	-25,589	3,104,939	3,140,457	-35,518	3,195,674	3,256,781	-61,107
November	90,091	113,447	-23,356	3,106,973	3,138,447	-31,474	3,197,064	3,251,894	-54,830
December (p)	89,130	106,745	-17,615	3,109,208	3,137,994	-28,786	3,198,338	3,244,739	-46,401
Annual Average	96,569	115,508	-18,940	3,103,401	3,120,325	-16,924	2,894,663	2,913,548	-18,885

(p) = preliminary

**Table C. Revisions to Colorado Select Labor Force Measures, January to December 2022
(Seasonally Adjusted)**

Month	Rates								
	Unemployment Rate			Employment-to-Population Ratio			Labor Force Participation Rate		
	As Revised	As Previously Published	Difference	As Revised	As Previously Published	Difference	As Revised	As Previously Published	Difference
January	4.0%	4.2%	-0.2%	65.9%	65.7%	0.2%	68.7%	68.5%	0.2%
February	3.6%	4.0%	-0.4%	66.2%	66.0%	0.2%	68.7%	68.7%	0.0%
March	3.3%	3.7%	-0.4%	66.5%	66.4%	0.1%	68.7%	68.9%	-0.2%
April	3.1%	3.6%	-0.5%	66.6%	66.6%	0.0%	68.7%	69.1%	-0.4%
May	2.9%	3.5%	-0.6%	66.6%	66.9%	-0.3%	68.6%	69.4%	-0.8%
June	2.8%	3.4%	-0.6%	66.6%	67.1%	-0.5%	68.5%	69.5%	-1.0%
July	2.7%	3.3%	-0.6%	66.4%	67.2%	-0.8%	68.3%	69.5%	-1.2%
August	2.6%	3.4%	-0.8%	66.3%	67.2%	-0.9%	68.1%	69.6%	-1.5%
September	2.8%	3.4%	-0.6%	66.2%	67.1%	-0.9%	68.1%	69.4%	-1.3%
October	2.8%	3.6%	-0.8%	66.1%	66.9%	-0.8%	68.1%	69.4%	-1.3%
November	2.8%	3.5%	-0.7%	66.1%	66.8%	-0.7%	68.0%	69.2%	-1.2%
December (p)	2.8%	3.3%	-0.5%	66.1%	66.7%	-0.6%	68.0%	69.0%	-1.0%
Annual Average	3.0%	3.6%	-0.6%	66.3%	66.7%	-0.4%	68.4%	69.2%	-0.8%

(p) = preliminary

###

All Colorado estimates from the establishment and household surveys, including greater geographic detail, are available at: <http://www.colmigateway.com>. Estimates for all states and the nation are available at: <http://www.bls.gov>.

The **February 2023 Colorado Employment Situation** will be released at 8:00 AM on Friday, March 24, 2023. The full schedule of release dates for calendar year 2023 estimates is available at <http://www.colmigateway.com>.

###

Technical Notes

It is a routine practice at the beginning of each year for the Bureau of Labor Statistics to revise estimates for prior years based on new information available and updated methodologies. Revisions to the statewide unemployment rate and all related household survey based series as a result of the benchmark process this year were made back to 2018. Additionally, county estimates back to 2010 are subject to further revisions through April 21, 2023. For information on changes to model-based estimation for the household survey, please visit <https://www.bls.gov/lau/launews1.htm>. The nonfarm payroll jobs series for 2020 through 2022 were also revised in the benchmarking process. Additionally, beginning with the release of January 2023 data, the Current Employment Statistics (CES) program implemented publication changes related to annual sample review and updated the nonfarm payroll series to the 2022 North American Industry Classification System (NAICS) from the 2017 definitions. For information on how 2022 NAICS definitions impact the CES program, visit <https://www.bls.gov/ces/naics/naics-2022.htm>. Additional information on benchmarking total nonfarm jobs estimates can be found at <https://www.bls.gov/web/empsit/cesbmart.htm>.

This release provides information on industry employment and labor force statistics for January 2023, the most current estimates available from the Colorado Department of Labor and Employment. The reference period for the establishment and household surveys was the pay period or week that includes the 12th of the month.

The unemployment rate, labor force, labor force participation, total employment and the number of unemployed are based on a survey of households. The total employment estimate derived from this survey is intended to measure the number of people employed.

Nonfarm payroll jobs estimates are based on a survey of business establishments and government agencies, and are intended to measure the number of jobs, not the number of people employed. Other series based on this survey include private sector average weekly hours, average hourly earnings and average weekly earnings.

The business establishment survey covers about seven times the number of households surveyed and is therefore considered a more reliable indicator of economic conditions. Because the estimates are based on two separate surveys, one measuring jobs by worksite and the other measuring persons employed and unemployed by household, estimates based on these surveys may provide seemingly conflicting results.

###

Supplemental information available in following pages

JANUARY 2023

EMPLOYMENT SITUATION SUPPLEMENTAL CHARTS

March 13, 2023

This briefing provides information on industry employment and labor force statistics, derived from surveys of business establishments and households. The reference period for these surveys is the pay period or week that includes the 12th of the month. The reference week for January was specifically January 8th – January 14th.

Changes to Colorado's 2022 Monthly Unemployment Rates After Annual Benchmarking

Percent

5

4

3

2

1

0

Jan-22

Feb-22

Mar-22

Apr-22

May-22

Jun-22

Jul-22

Aug-22

Sep-22

Oct-22

Nov-22

Dec-22

4.2

4.0

4.0

3.6

3.7

3.3

3.6

3.1

3.5

2.9

3.4

2.8

3.3

2.7

3.4

2.6

3.4

2.8

3.6

2.8

3.5

2.8

3.3

2.8

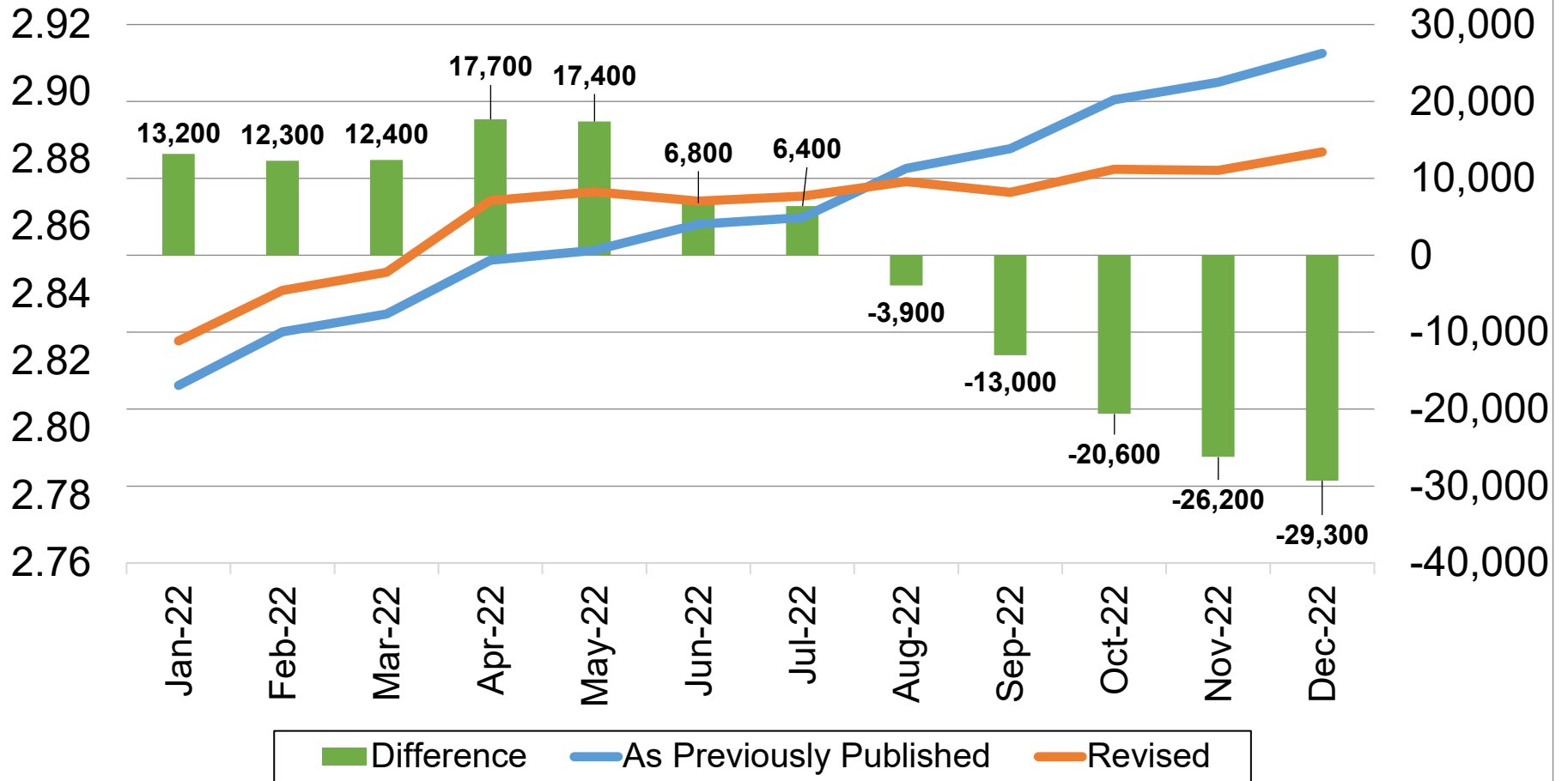
■ As Previously Published ■ Revised

Source: Colorado Department of Labor and Employment; Bureau of Labor Statistics
Data seasonally adjusted

Changes to Colorado's 2022 Monthly Total Nonfarm Payroll Employment Levels After Annual Benchmarking

Number of Payroll Jobs, in Millions
(Orange and Blue Lines)

Change in the Number of Payroll Jobs
(Green Bar)

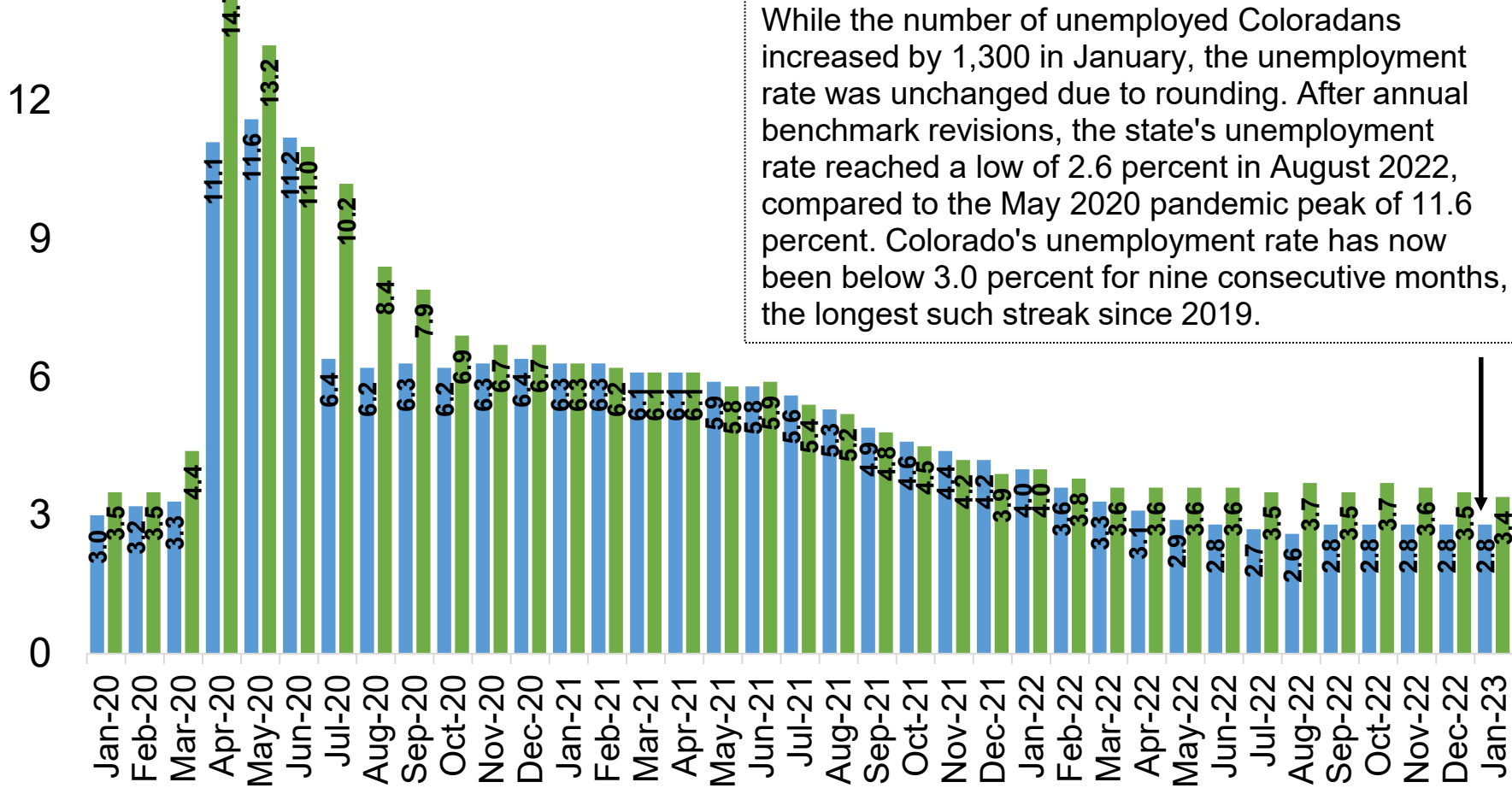


Source: Colorado Department of Labor and Employment; Bureau of Labor Statistics
Data seasonally adjusted

Colorado and U.S. Unemployment Rates

Return to Pre-Pandemic Levels

Percent
15

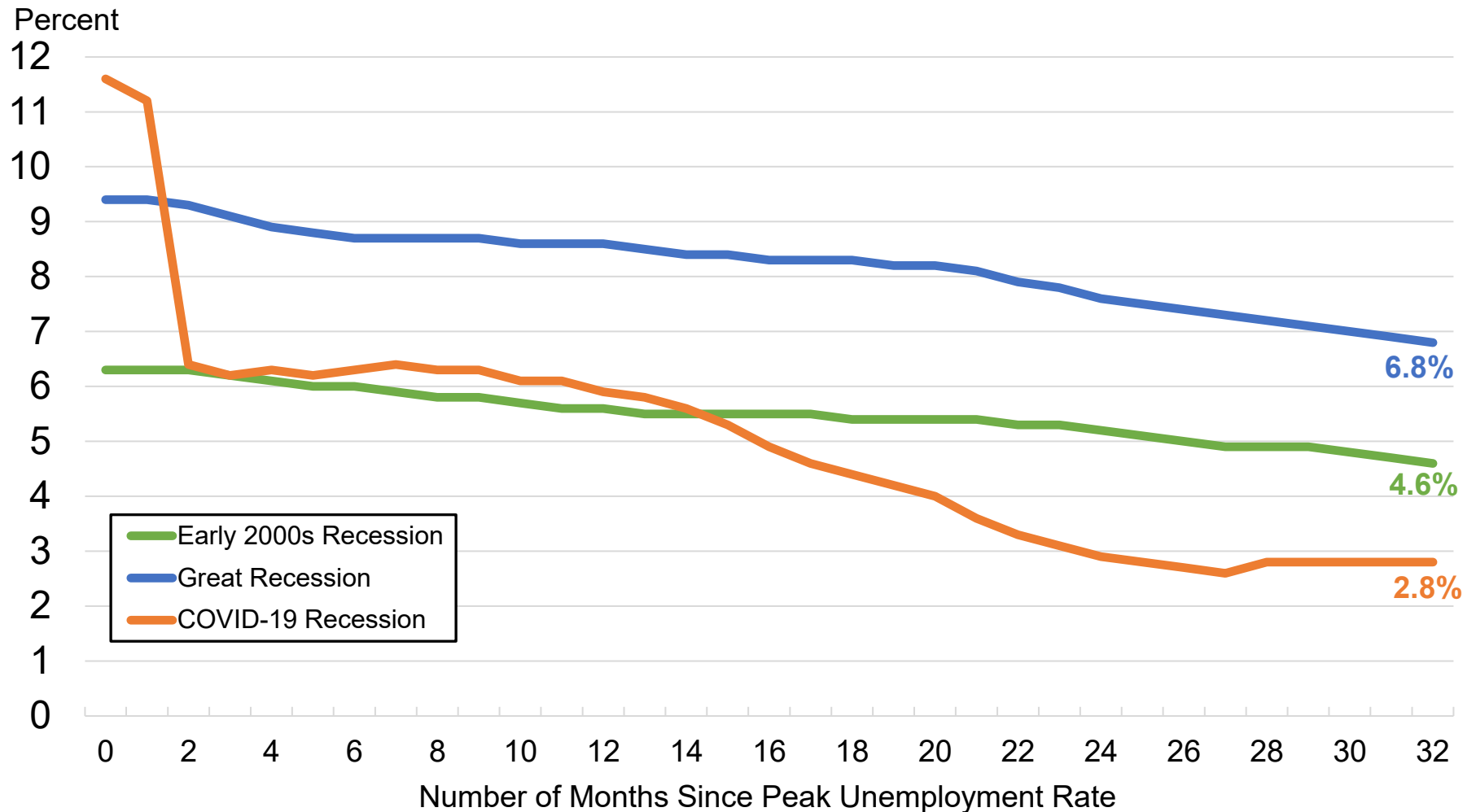


While the number of unemployed Coloradans increased by 1,300 in January, the unemployment rate was unchanged due to rounding. After annual benchmark revisions, the state's unemployment rate reached a low of 2.6 percent in August 2022, compared to the May 2020 pandemic peak of 11.6 percent. Colorado's unemployment rate has now been below 3.0 percent for nine consecutive months, the longest such streak since 2019.

Source: Colorado Department of Labor and Employment; Bureau of Labor Statistics
Data seasonally adjusted

■ Colorado ■ U.S.

Comparing Recovery in Colorado's Unemployment Rate During Last Three Recessions



Source: Colorado Department of Labor and Employment; Bureau of Labor Statistics
 Data seasonally adjusted. Peak Colorado unemployment rate for early 2000s recession was 6.3 percent in May 2003; Great Recession peak was 9.4 percent in October 2010; and COVID-19 recession peak was 11.6 percent in May 2020.

Colorado's Labor Force Participation Rate Slightly Below Pre-Pandemic Levels After Revisions

Percent
72

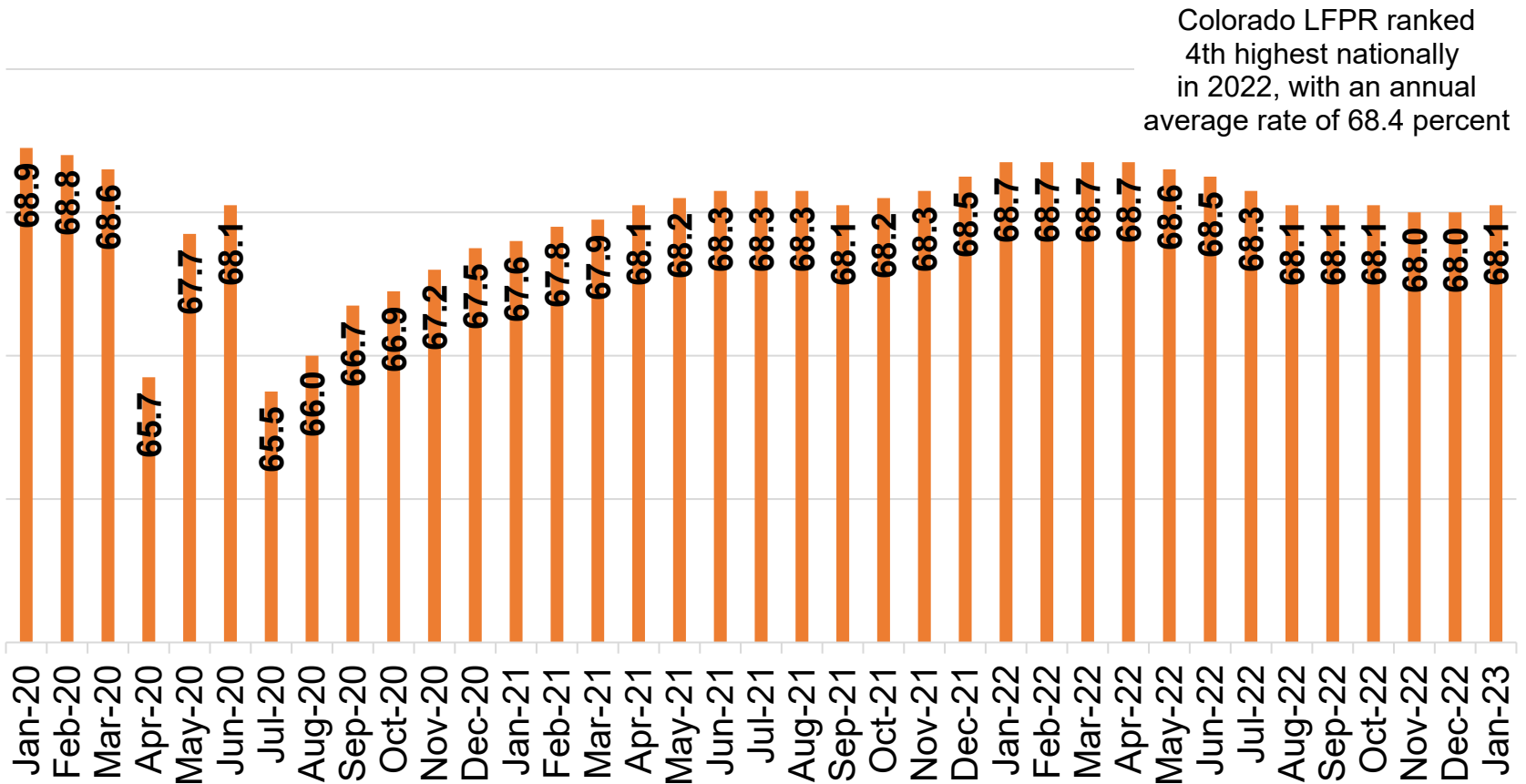
70

68

66

64

62



Source: Colorado Department of Labor and Employment; Bureau of Labor Statistics

Data seasonally adjusted. Estimates share of Colorado's 16+ population that is in the labor force in a given month.

For further information on labor force definitions, go here: <https://www.bls.gov/lau/laufaq.htm>

Colorado's Employment-to-Population Ratio Close to Pre-Pandemic Levels After Revisions

Percent

72

70

68

66

64

62

60

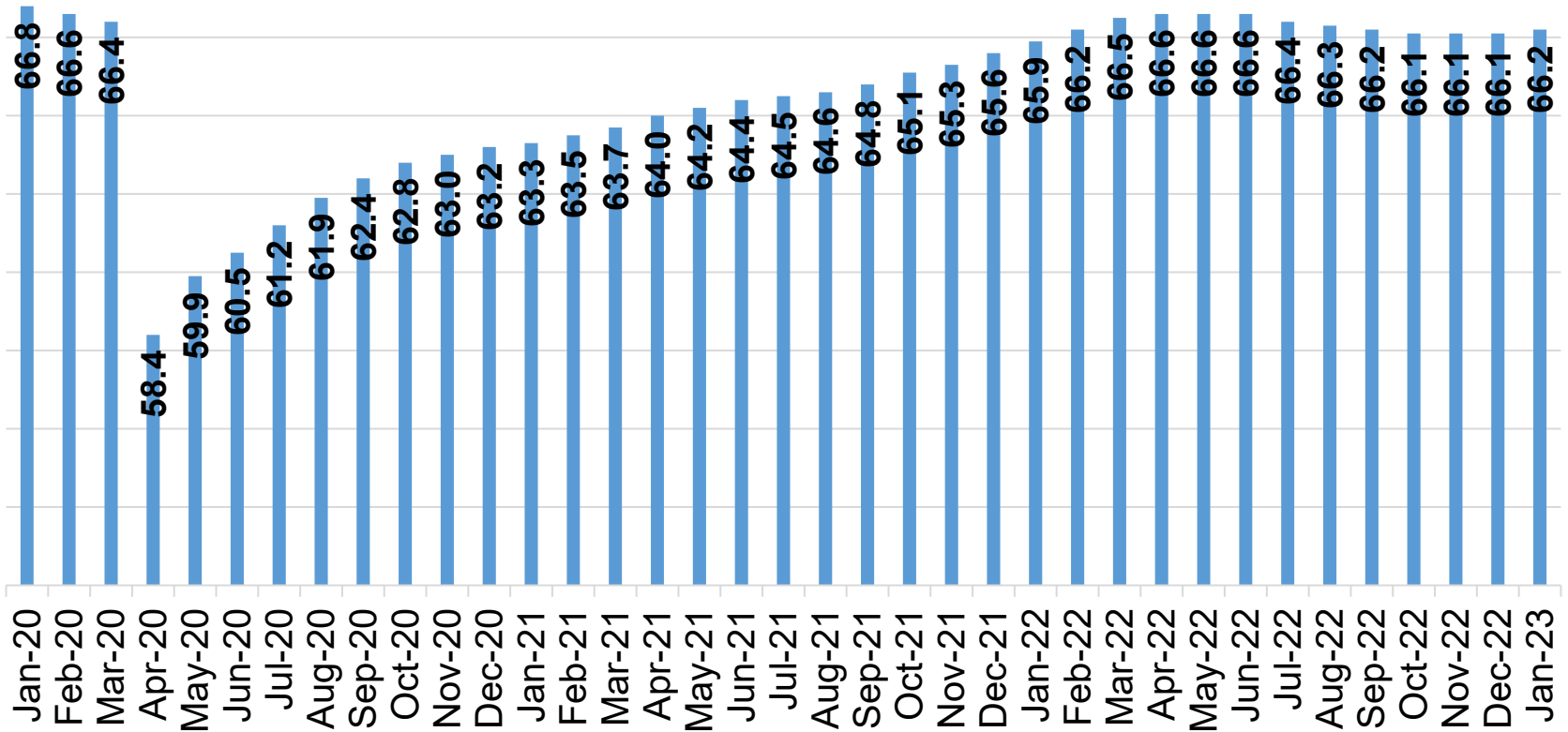
58

56

54

52

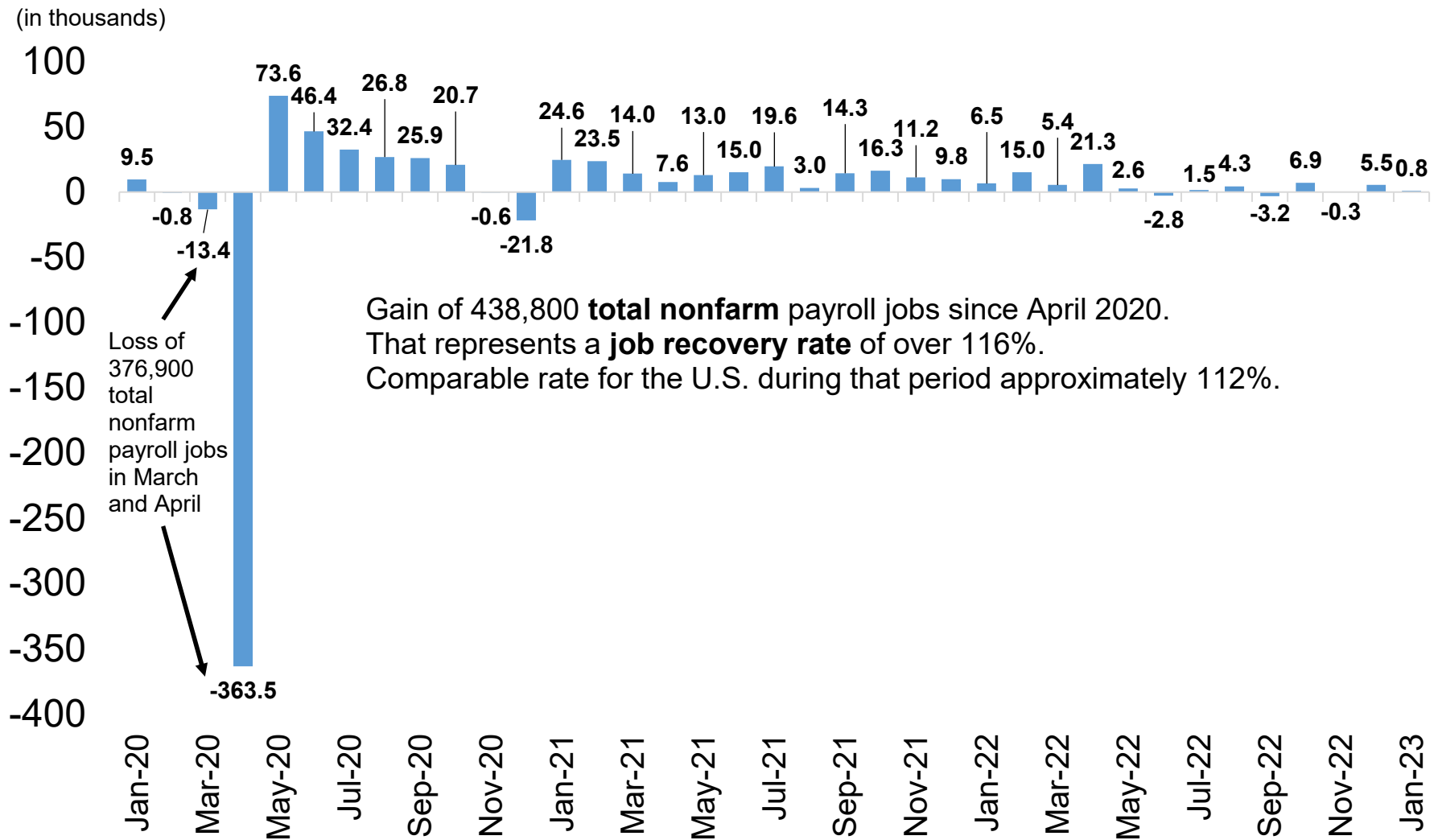
Colorado EPOP ranked
5th highest nationally
in 2022, with an annual
average rate of 66.3 percent



Source: Colorado Department of Labor and Employment; Bureau of Labor Statistics

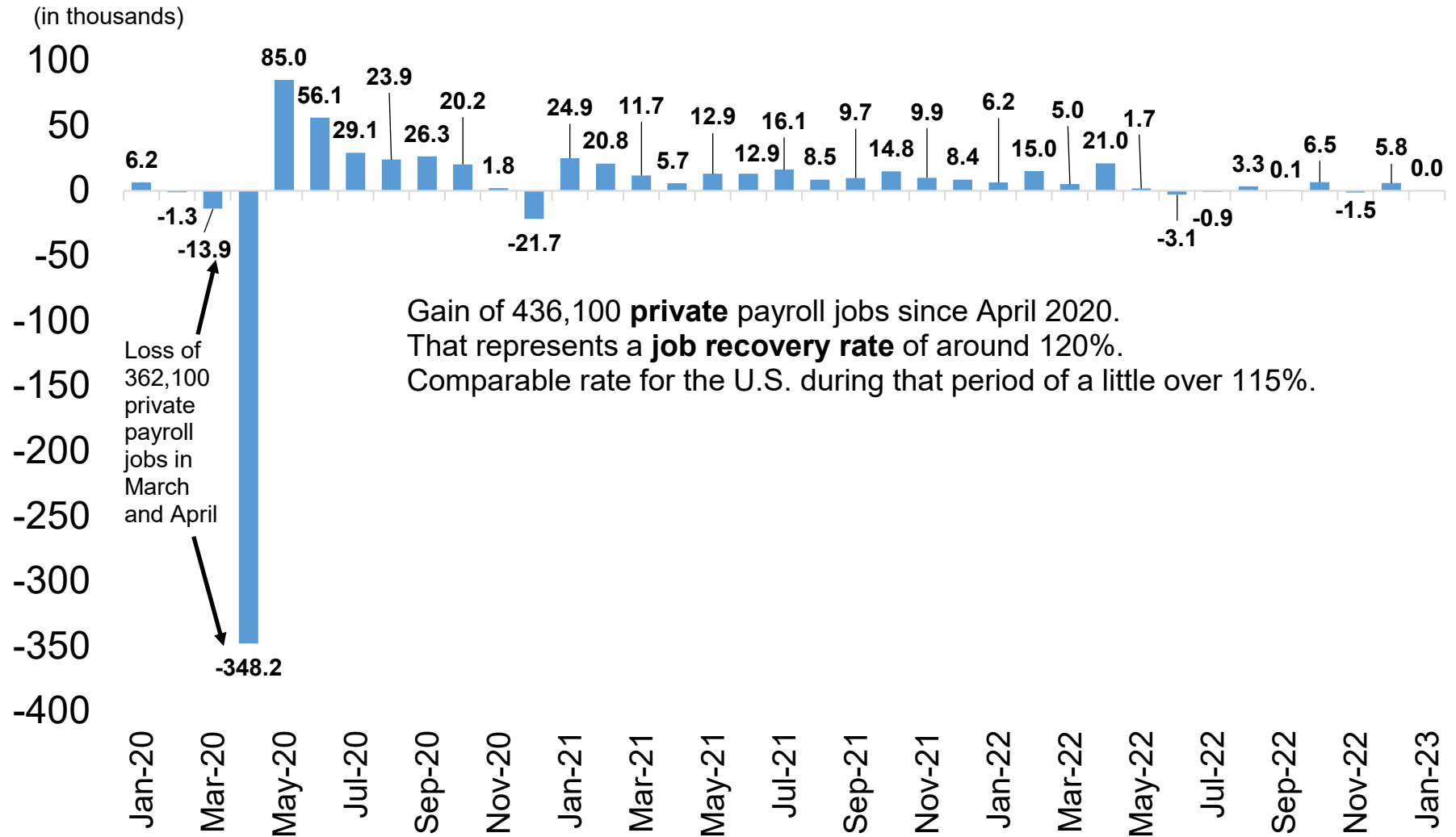
Data seasonally adjusted. Estimates share of Colorado's 16+ population that is employed in a given month.

Colorado Added 800 Total Nonfarm Jobs in January; The State Gained 112,800 Jobs in 2022



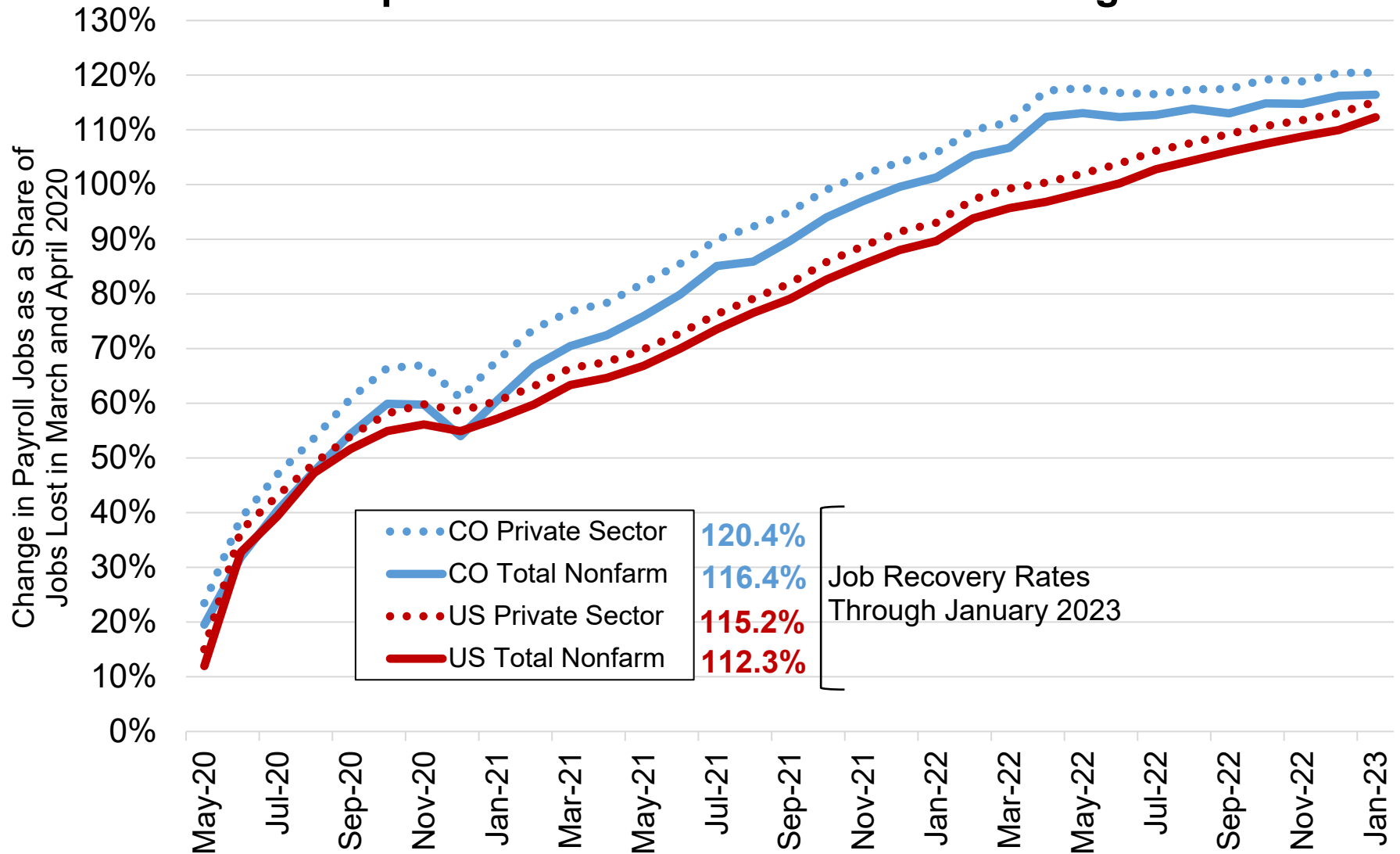
Source: Colorado Department of Labor and Employment; Bureau of Labor Statistics
Data seasonally adjusted

Zero Private Sector Jobs Gained in January; Colorado Added 103,300 Private Jobs in 2022



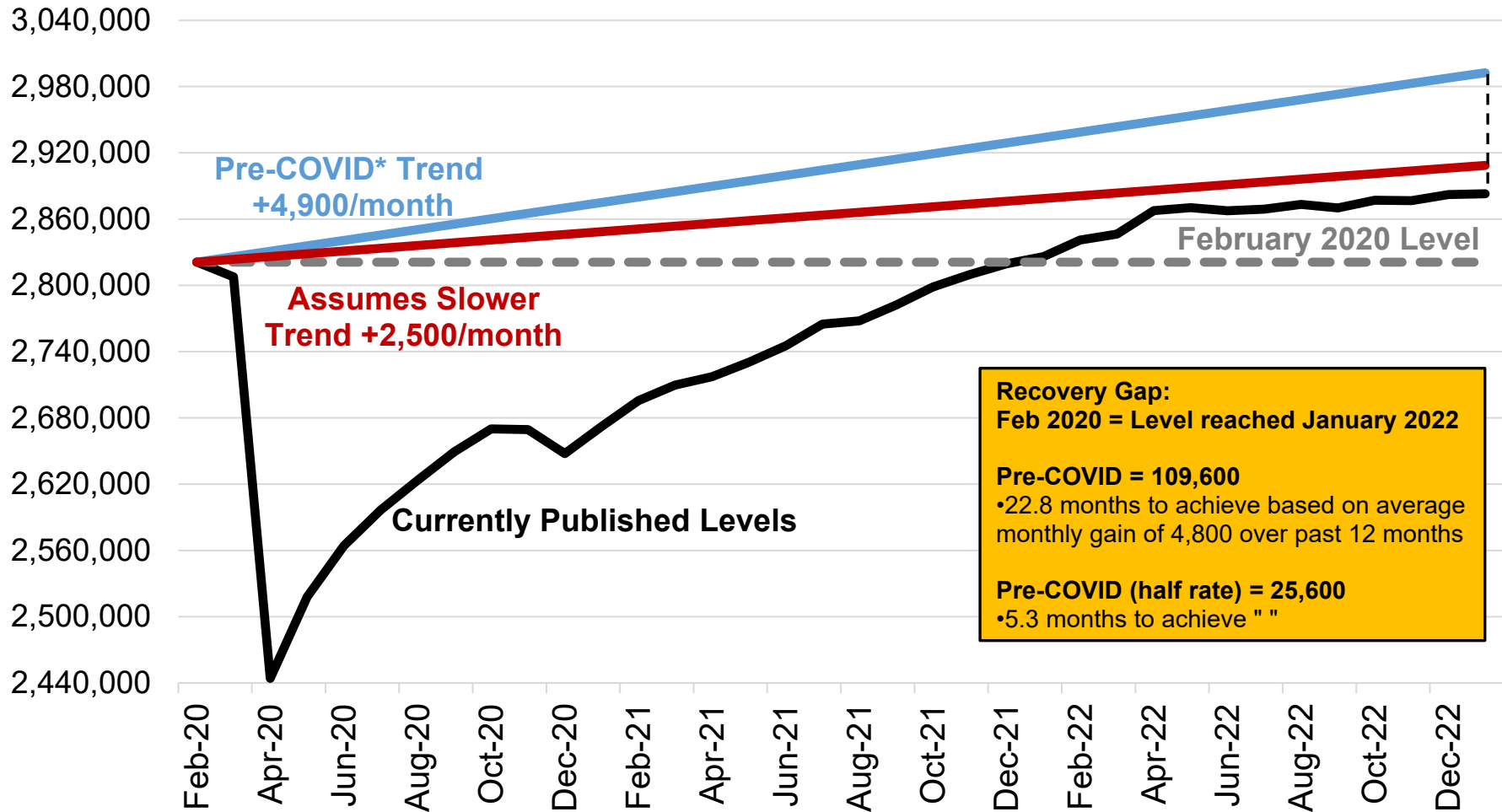
Source: Colorado Department of Labor and Employment; Bureau of Labor Statistics
Data seasonally adjusted

Colorado's Rate of Job Recovery Narrowed Compared to the U.S. After Benchmarking



Source: Colorado Department of Labor and Employment; Bureau of Labor Statistics
Data seasonally adjusted

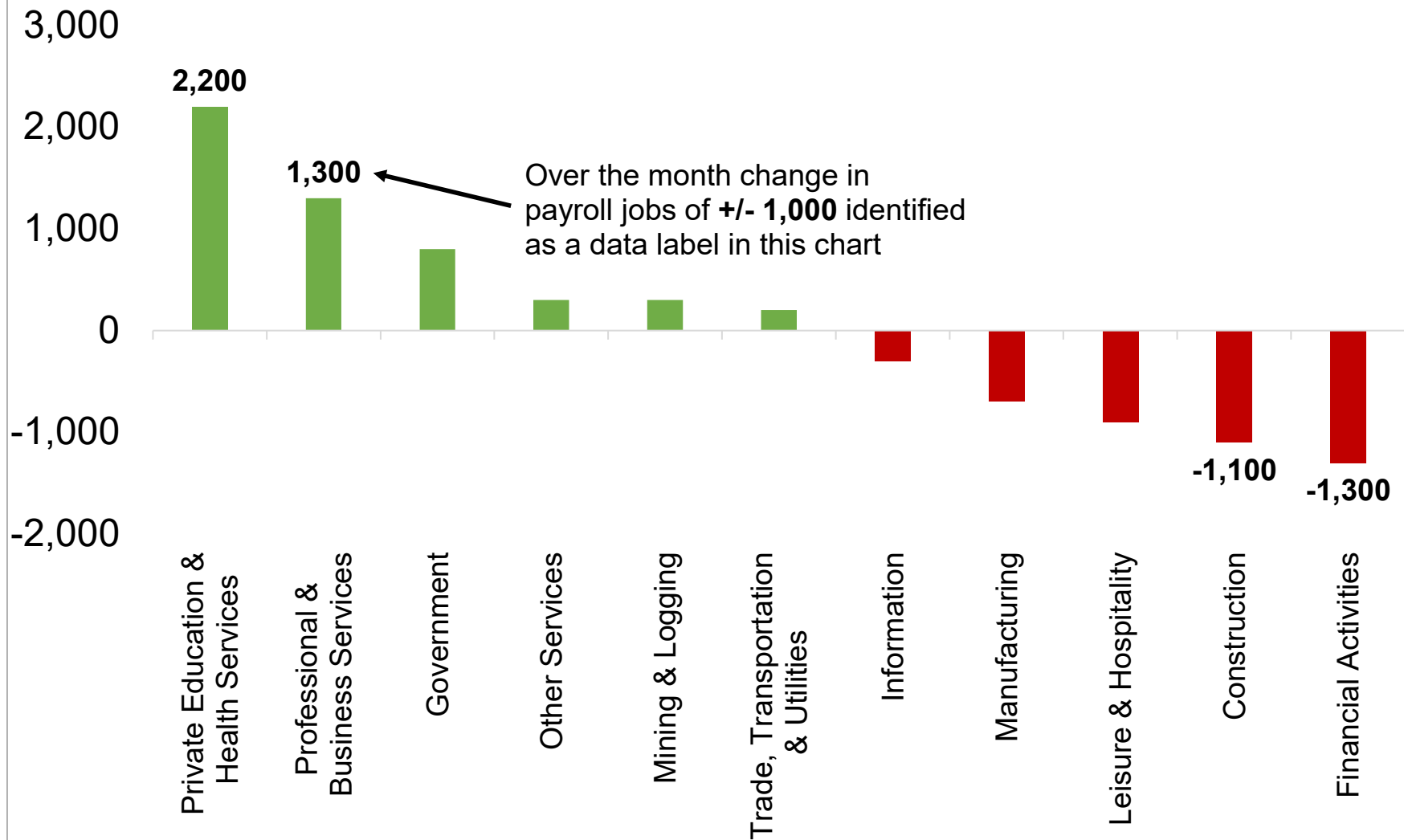
Colorado Total Nonfarm Employment and the Gap Between Different Measures of Recovery Baselines



Source: Colorado Department of Labor and Employment; Bureau of Labor Statistics
Data seasonally adjusted

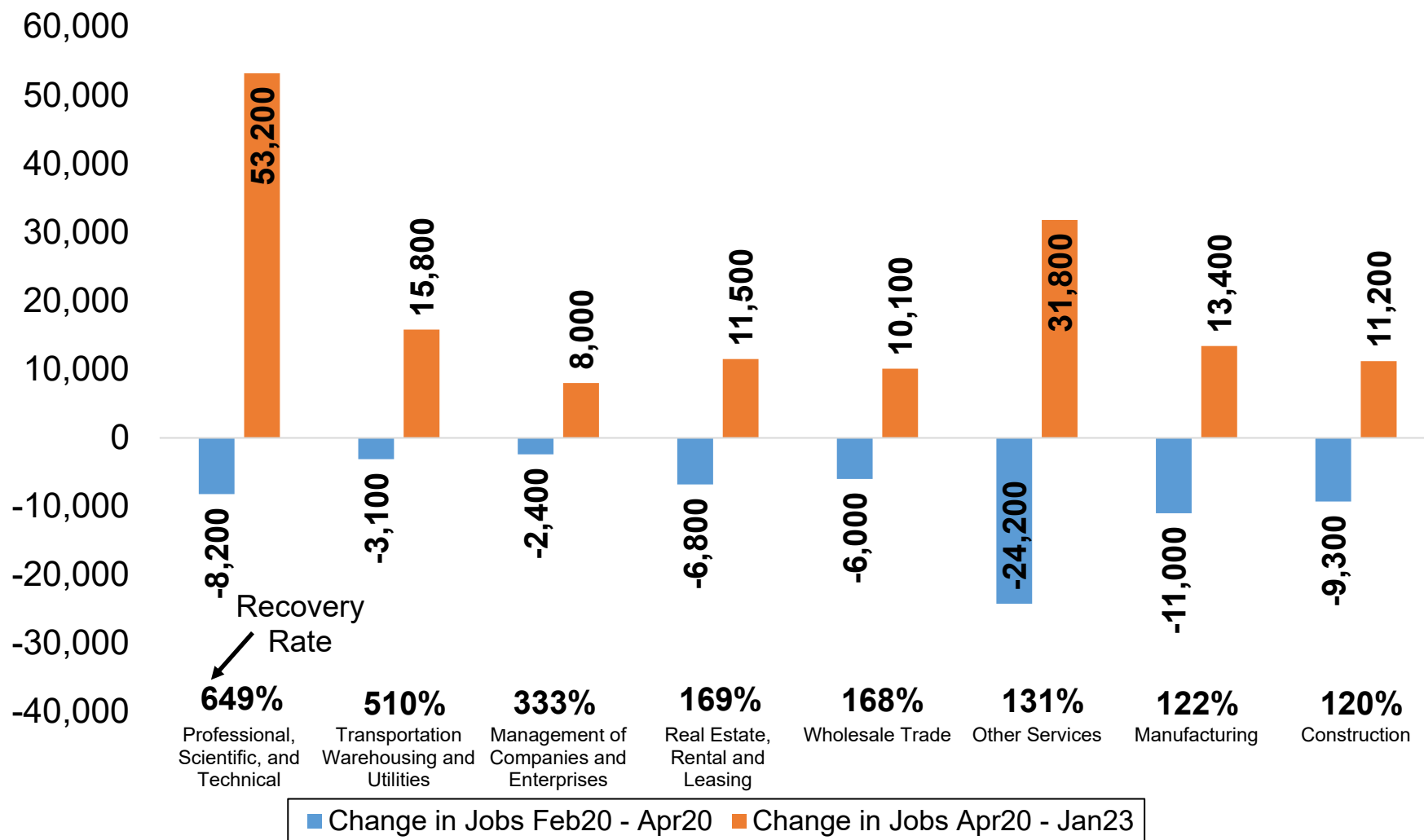
*Note: the **blue line** represents the trendline in the level of total nonfarm employment if the 2019 average monthly gain of 4,900 payroll jobs had held constant. This can be used as a baseline if no pandemic-related recession had occurred and job growth had continued at an uninterrupted pace. **Red line** assumes a slower counterfactual trendline.

Mixed Industry Growth in January, with Private Education and Health Services with Largest Gains



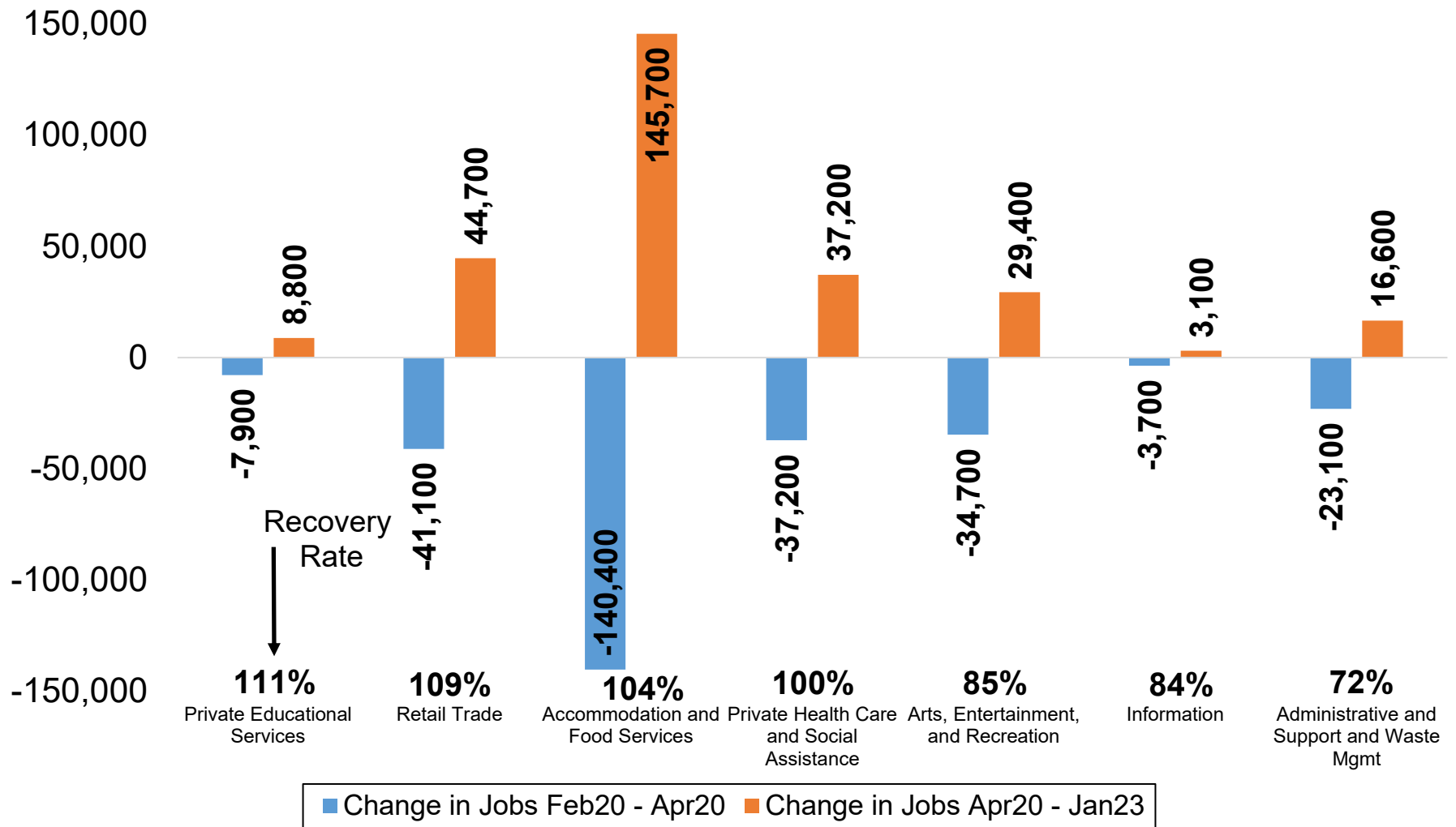
Source: Colorado Department of Labor and Employment; Bureau of Labor Statistics
Data seasonally adjusted

Colorado Industry Sectors with the Fastest Payroll Job Recovery Rates



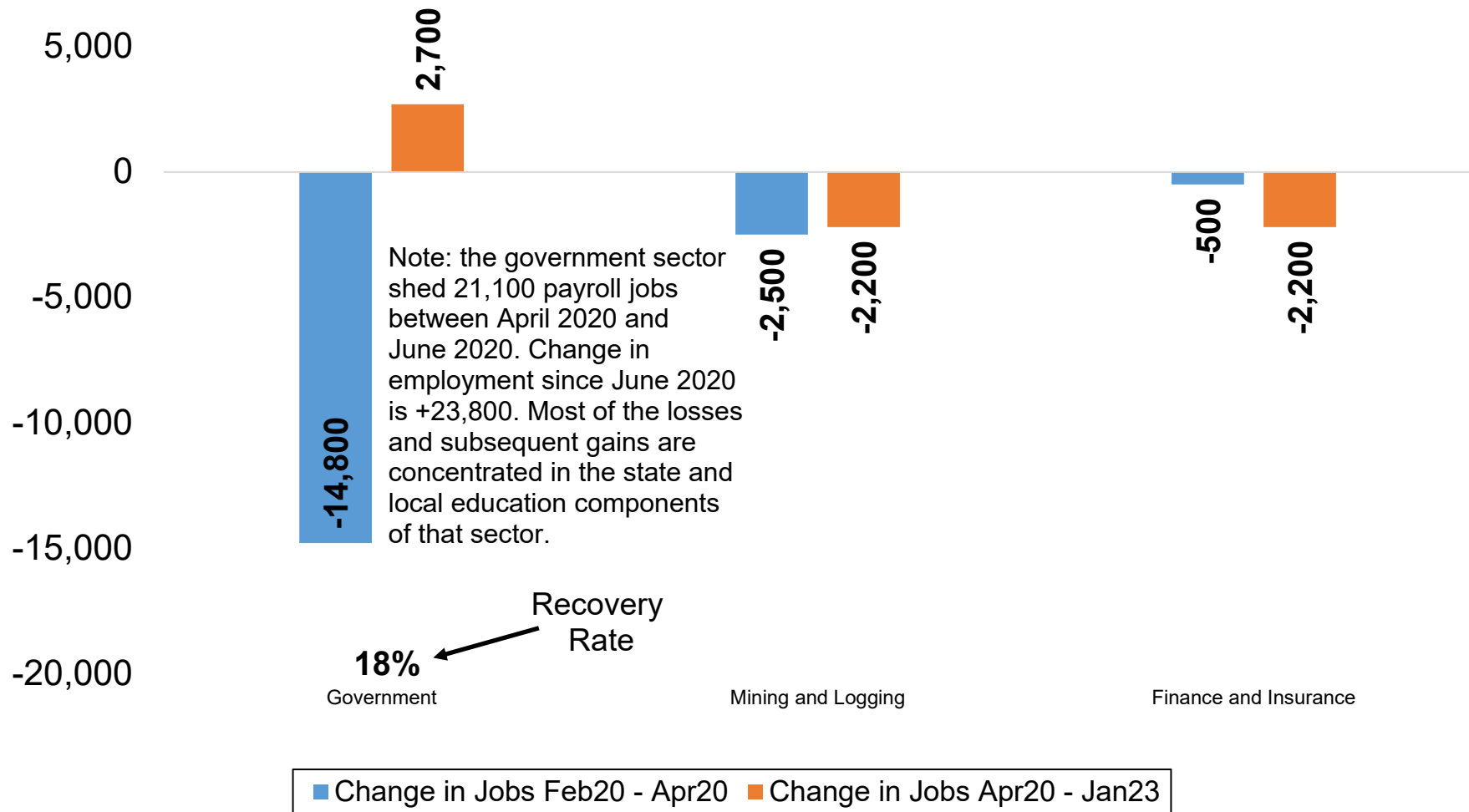
Source: Colorado Department of Labor and Employment; Bureau of Labor Statistics
Data seasonally adjusted

Colorado Industry Sectors with Payroll Job Recovery Rates Between 72 and 111 Percent



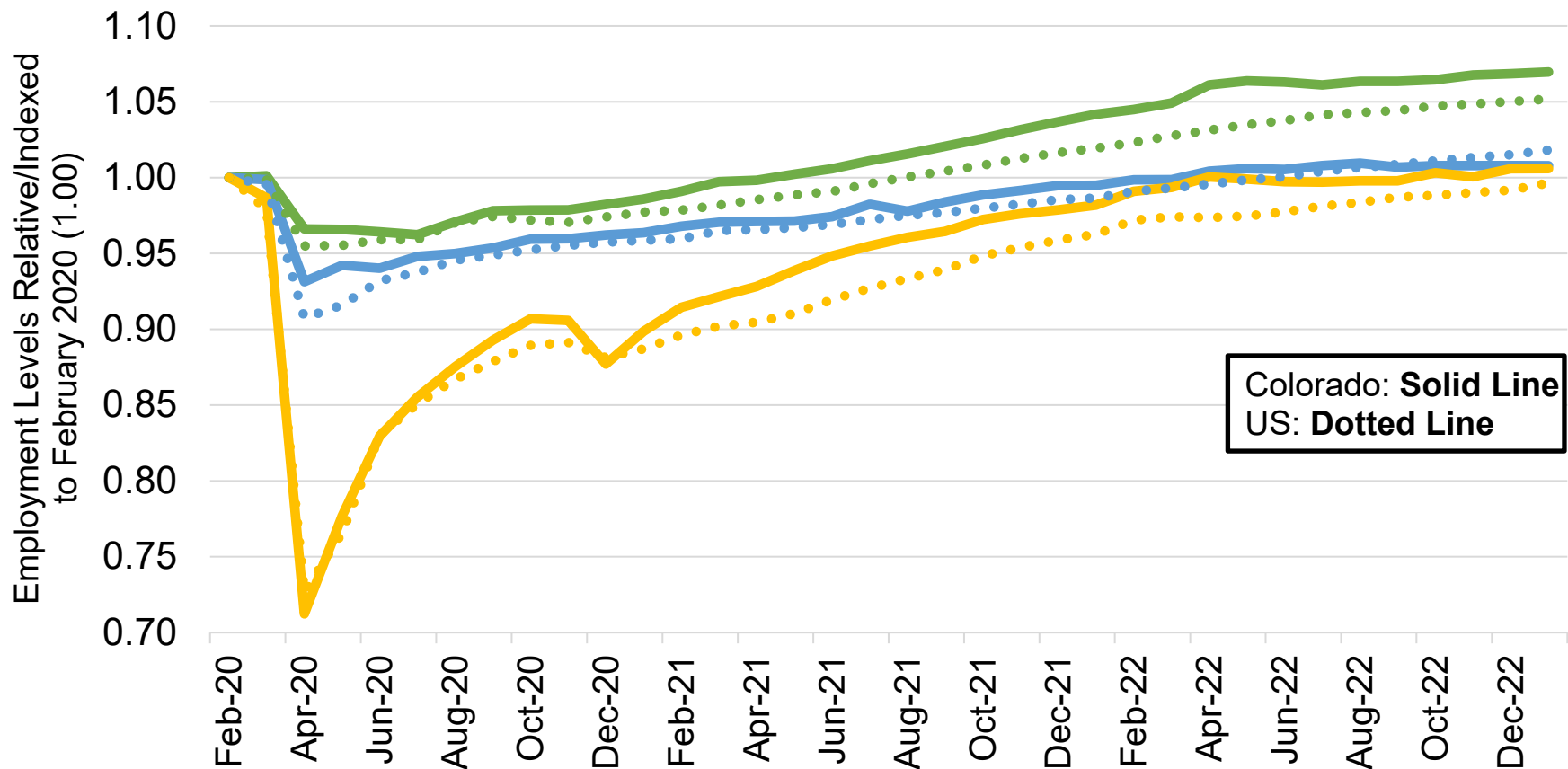
Source: Colorado Department of Labor and Employment; Bureau of Labor Statistics
Data seasonally adjusted

Colorado Industry Sectors with Low Recovery Rates or Continued Losses in Payroll Jobs Since April 2020



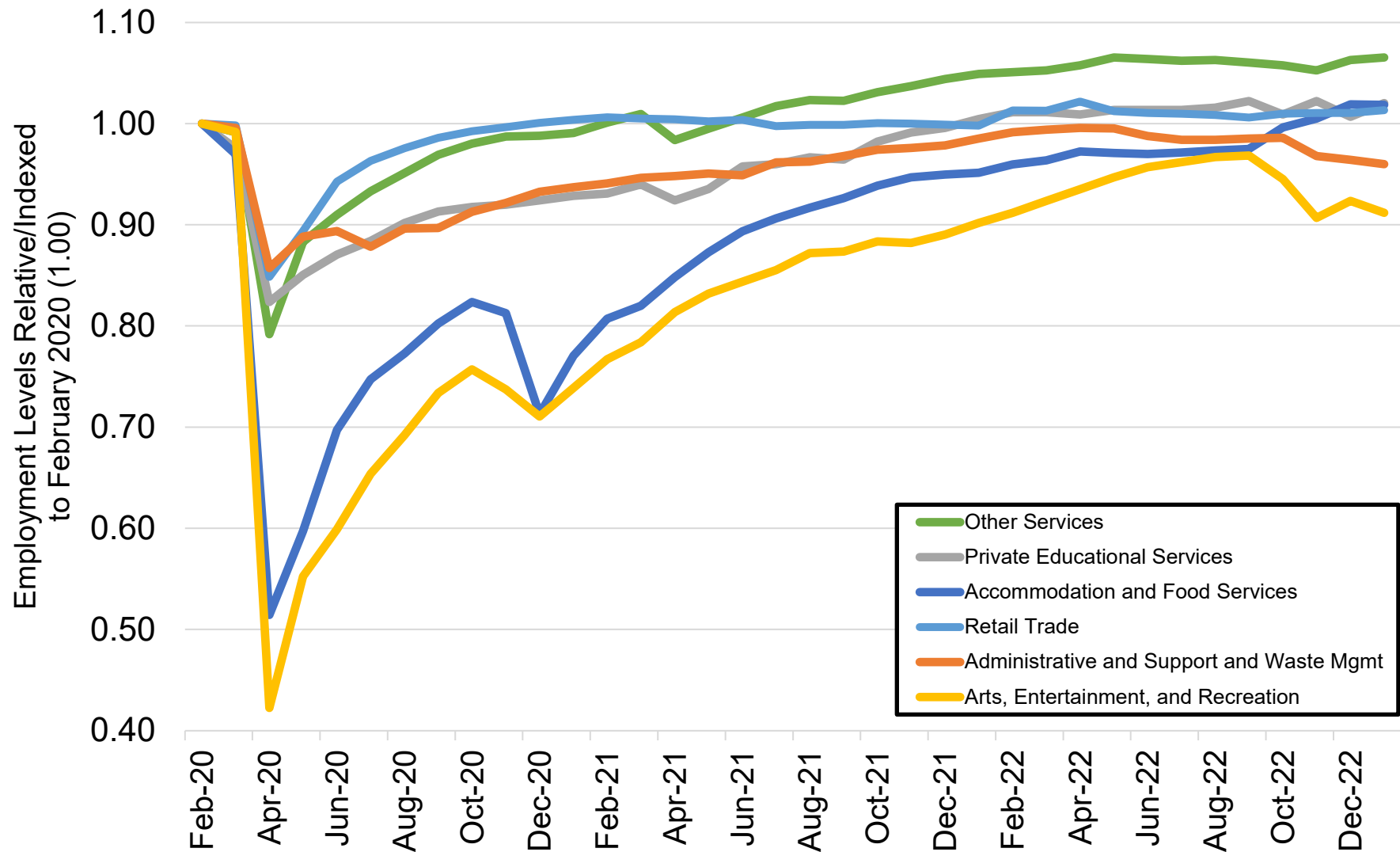
Source: Colorado Department of Labor and Employment; Bureau of Labor Statistics
Data seasonally adjusted

Job Loss and Recovery by Low, Medium, and High Wage Industries (Colorado & U.S.)



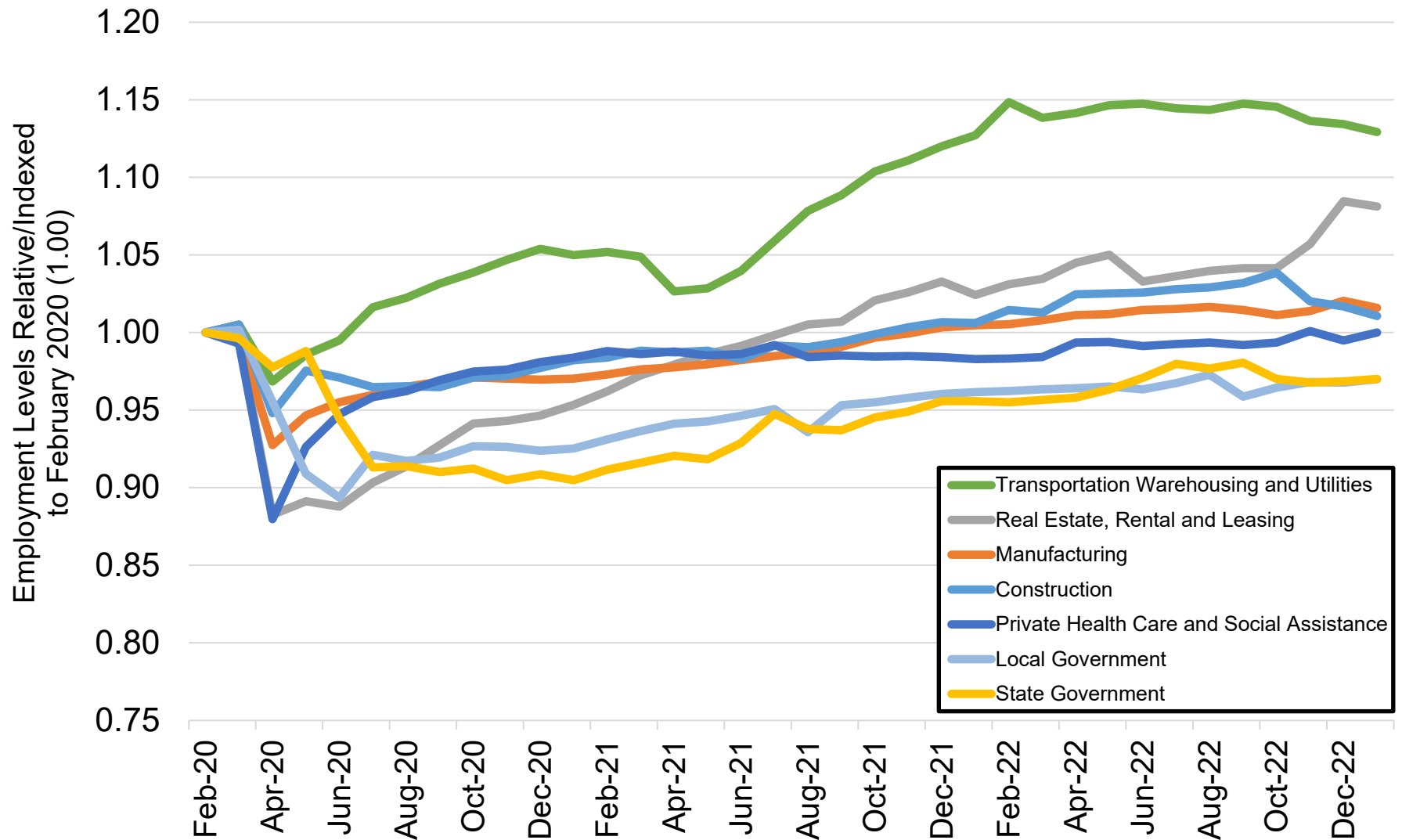
Source: Colorado Department of Labor and Employment; Bureau of Labor Statistics
 Data seasonally adjusted. Note: low, medium, and high wage industries are determined by the 2019 state-level average weekly wage estimates from the Quarterly Census of Employment and Wages. **Low wage industries include:** retail trade; admin support/waste mgmt; private education services; arts, entertainment, and recreation; accommodation and food services; and other services. **Medium wage industries include:** construction; manufacturing; transportation, warehousing, and utilities; real estate, rental, and leasing; private health care and social assistance; state government; and local government. **High wage industries include:** mining and logging; wholesale trade; information; finance and insurance; professional and technical services; management of companies; and federal government.

Colorado Job Loss & Recovery by Low Wage Industries



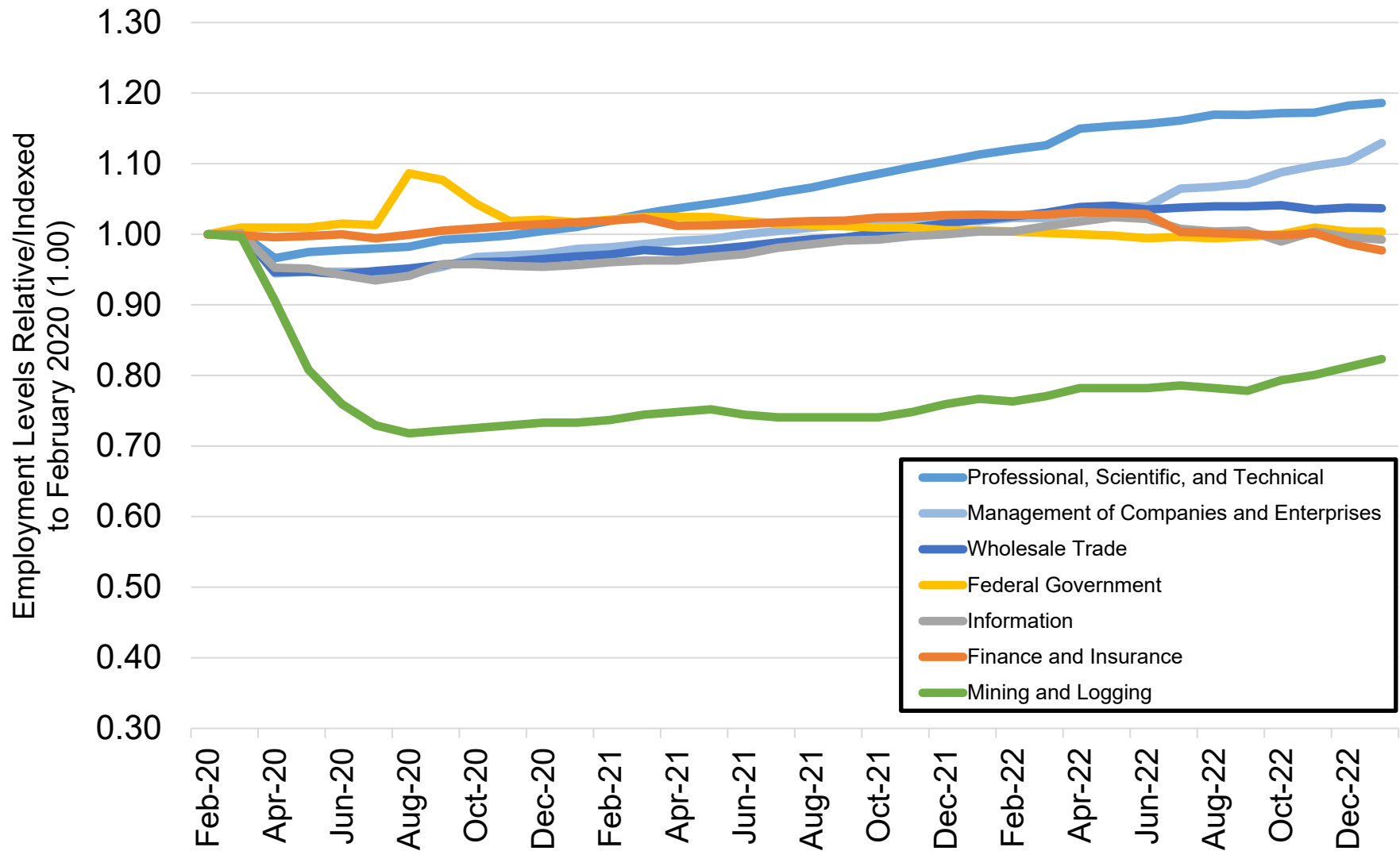
Source: Colorado Department of Labor and Employment; Bureau of Labor Statistics
 Data seasonally adjusted. Note: low wage industries are determined by the 2019 state-level average weekly wage estimates from the Quarterly Census of Employment and Wages.

Colorado Job Loss & Recovery by Medium Wage Industries



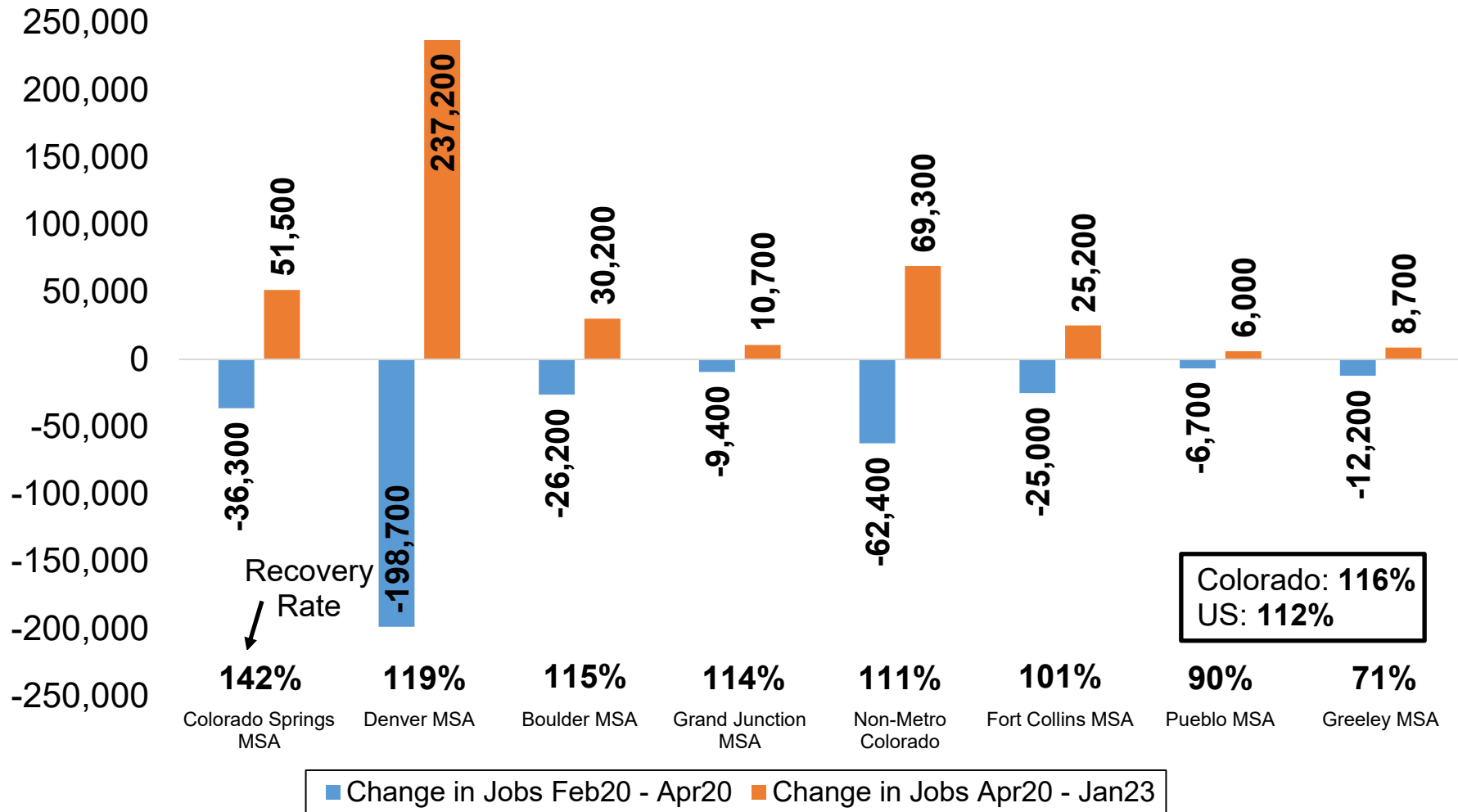
Source: Colorado Department of Labor and Employment; Bureau of Labor Statistics
 Data seasonally adjusted. Note: medium wage industries are determined by the 2019 state-level average weekly wage estimates from the Quarterly Census of Employment and Wages.

Colorado Job Loss & Recovery by High Wage Industries



Source: Colorado Department of Labor and Employment; Bureau of Labor Statistics
 Data seasonally adjusted. Note: high wage industries are determined by the 2019 state-level average weekly wage estimates from the Quarterly Census of Employment and Wages.

Total Nonfarm Job Recovery Rates by Colorado Substate Area

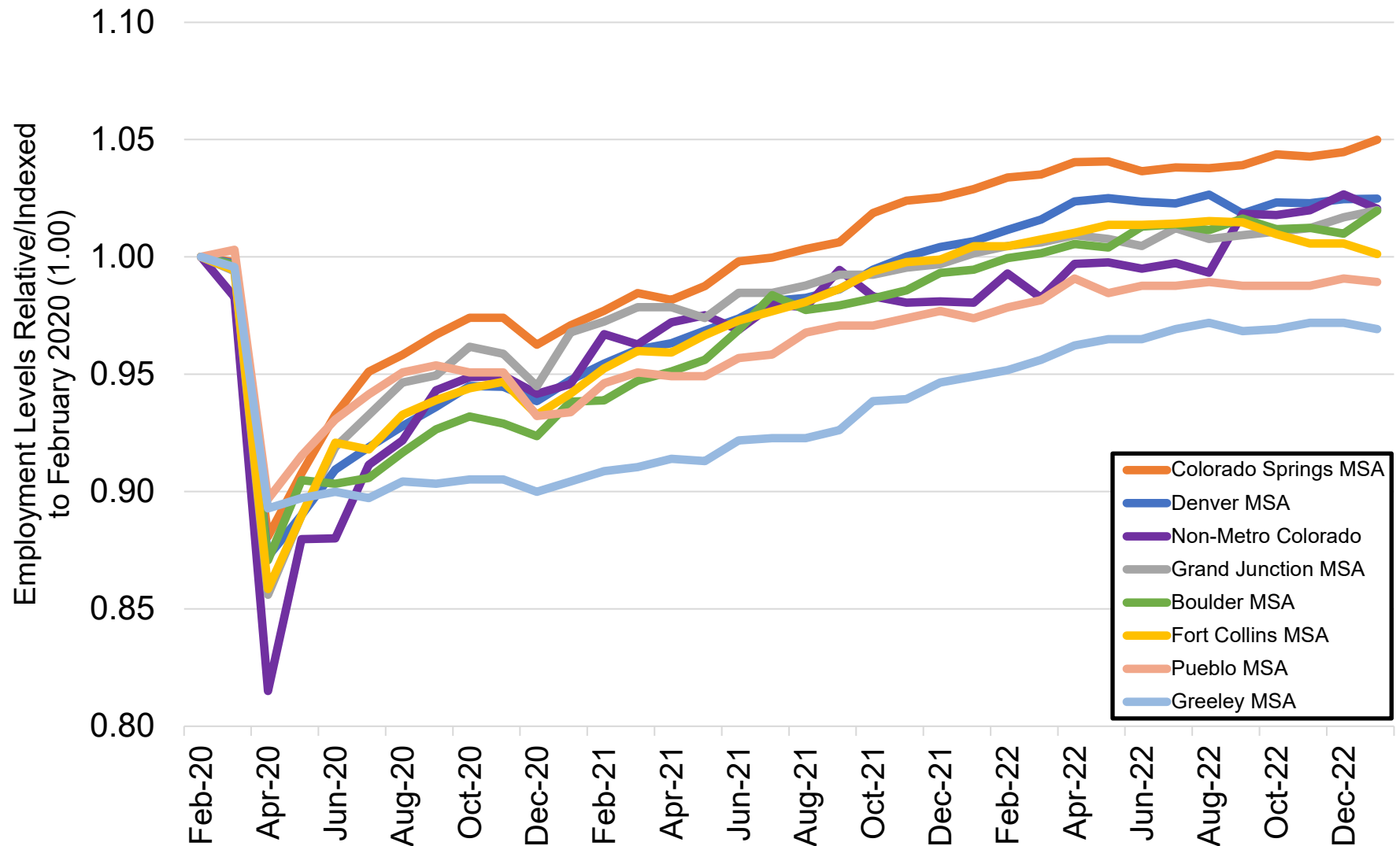


Source: Colorado Department of Labor and Employment; Bureau of Labor Statistics

Data seasonally adjusted

Note: MSA = Metropolitan Statistical Area; Non-Metro Colorado = residual of state that is not an MSA (47 total counties)

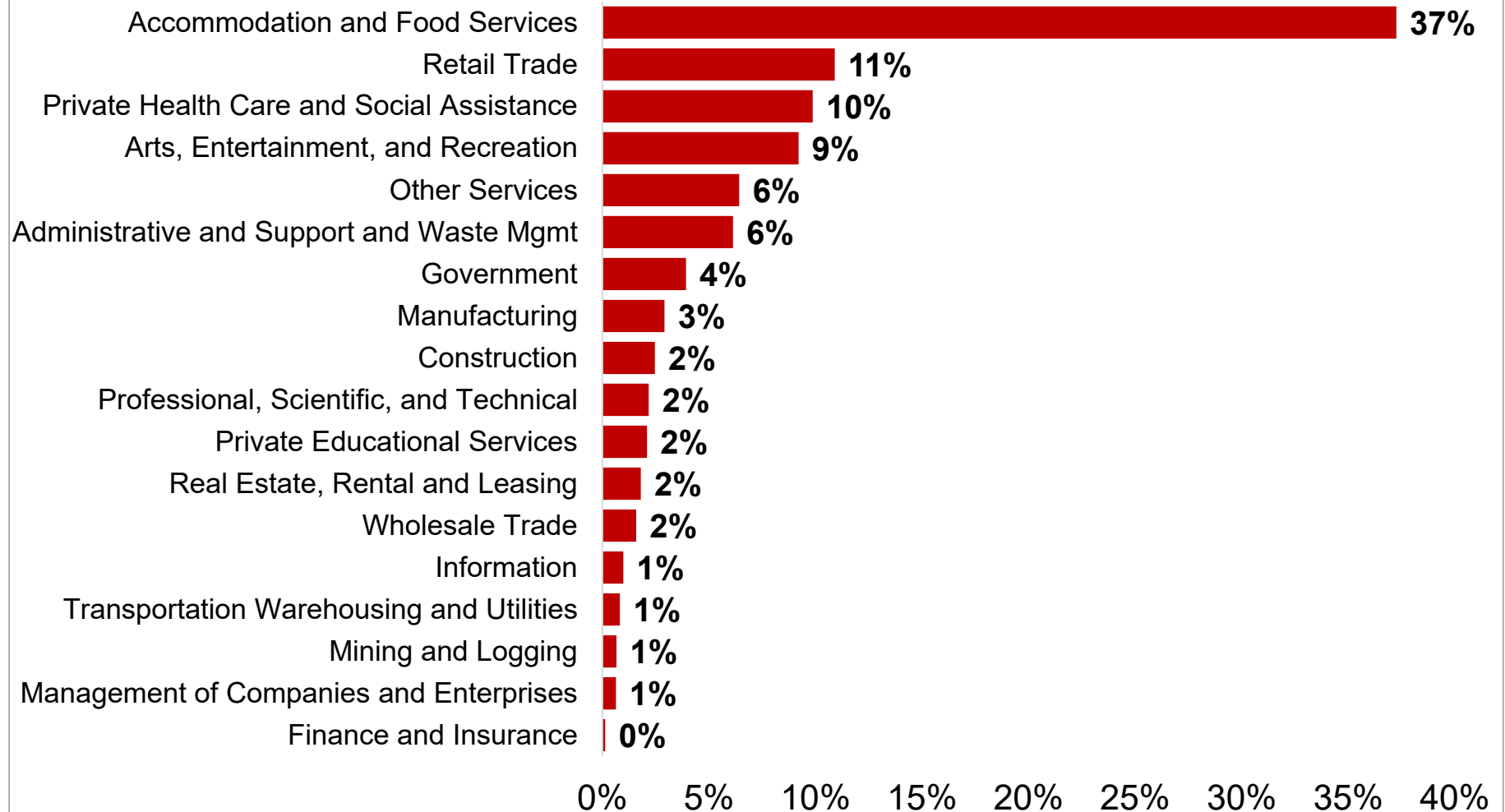
Colorado Job Loss & Recovery by Colorado Substate Area



Source: Colorado Department of Labor and Employment; Bureau of Labor Statistics

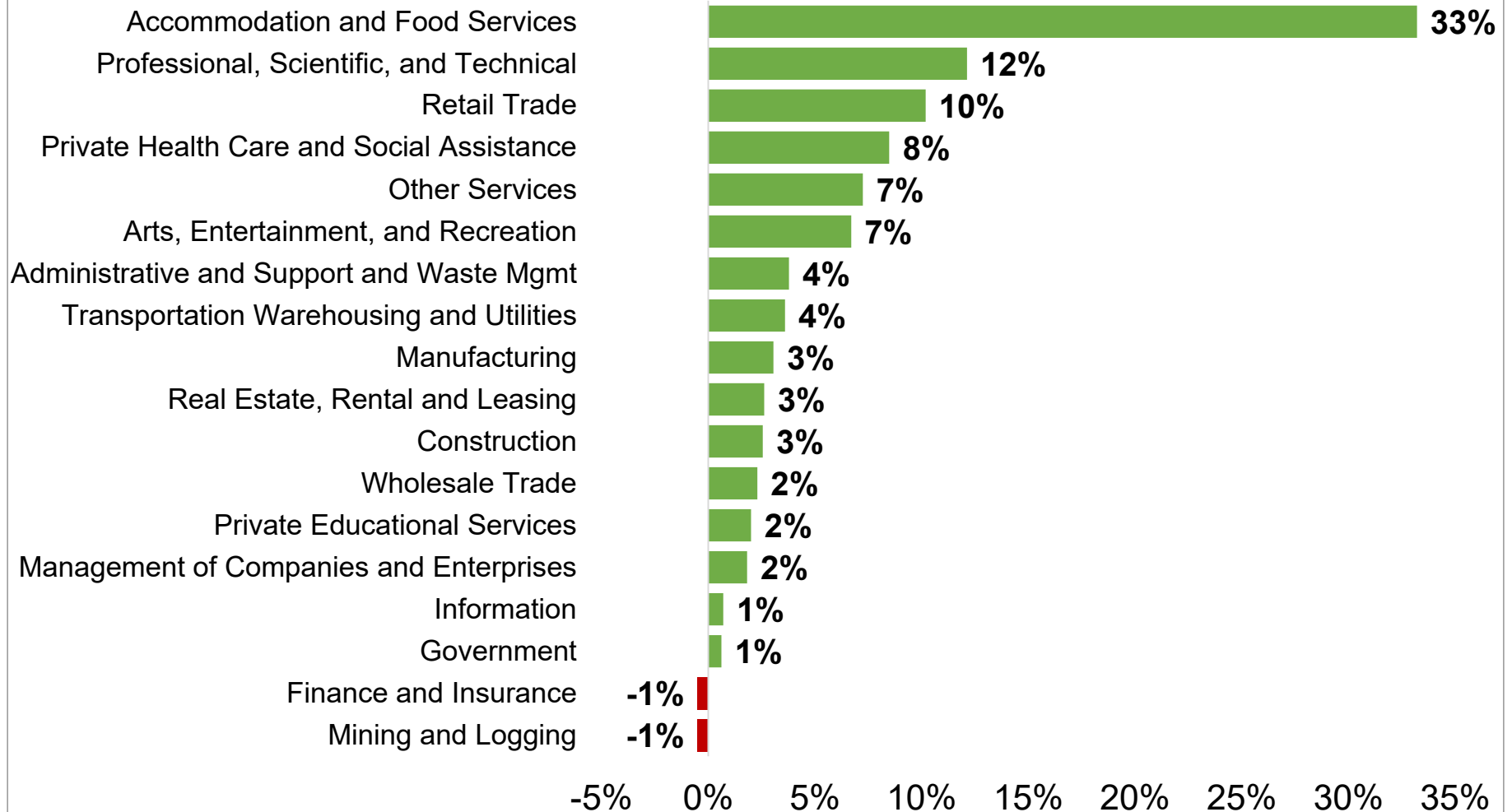
Data seasonally adjusted. Note: MSA = Metropolitan Statistical Area; Non-Metro Colorado = residual of state that is not an MSA (47 counties).

Percent Contribution to Total Colorado Nonfarm Payroll Jobs Lost March & April 2020, by Industry Sector



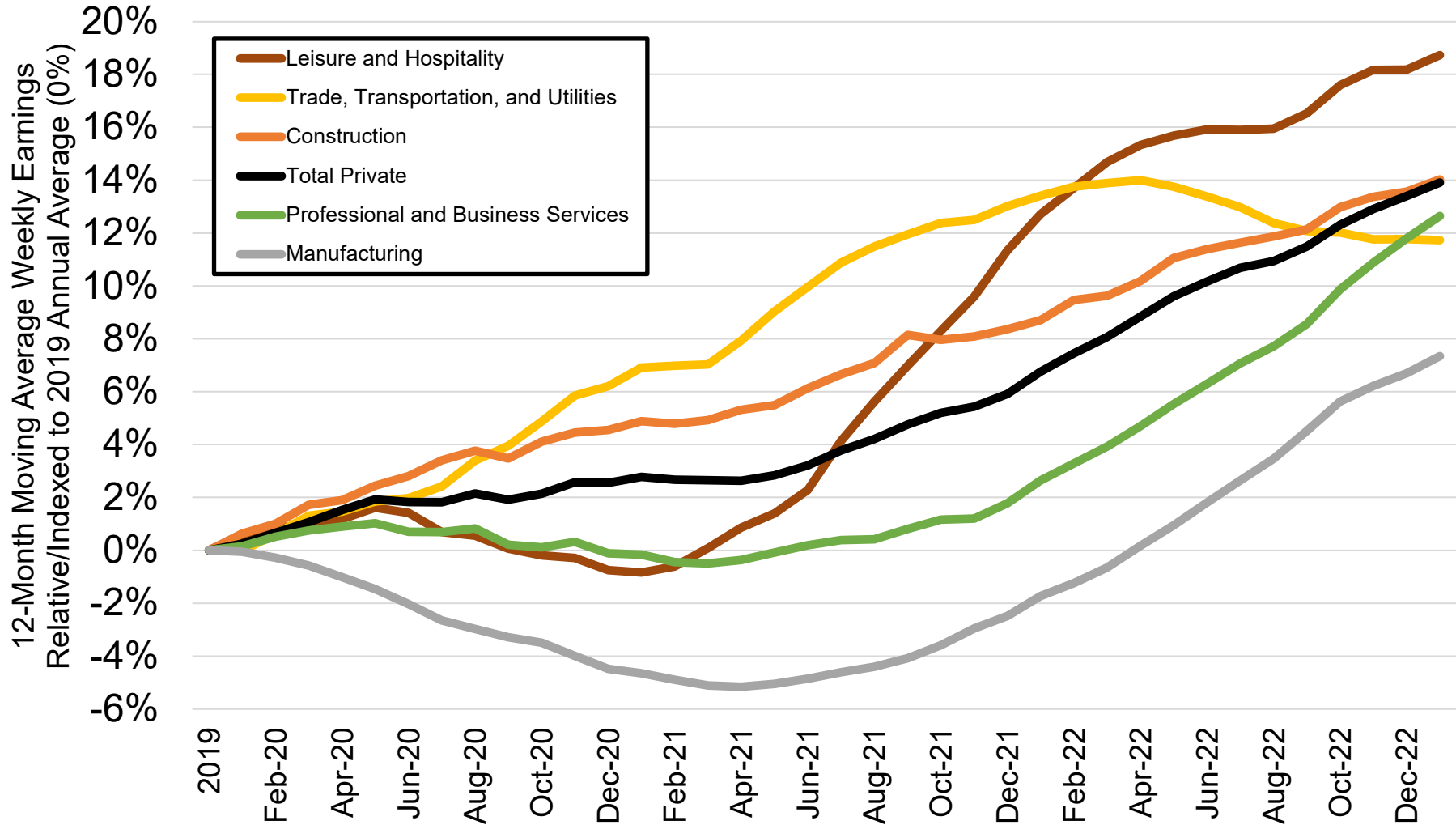
Source: Colorado Department of Labor and Employment; Bureau of Labor Statistics
Data seasonally adjusted

Percent Contribution to Total Colorado Nonfarm Payroll Jobs Added Since April 2020, by Industry Sector



Source: Colorado Department of Labor and Employment; Bureau of Labor Statistics
Data seasonally adjusted

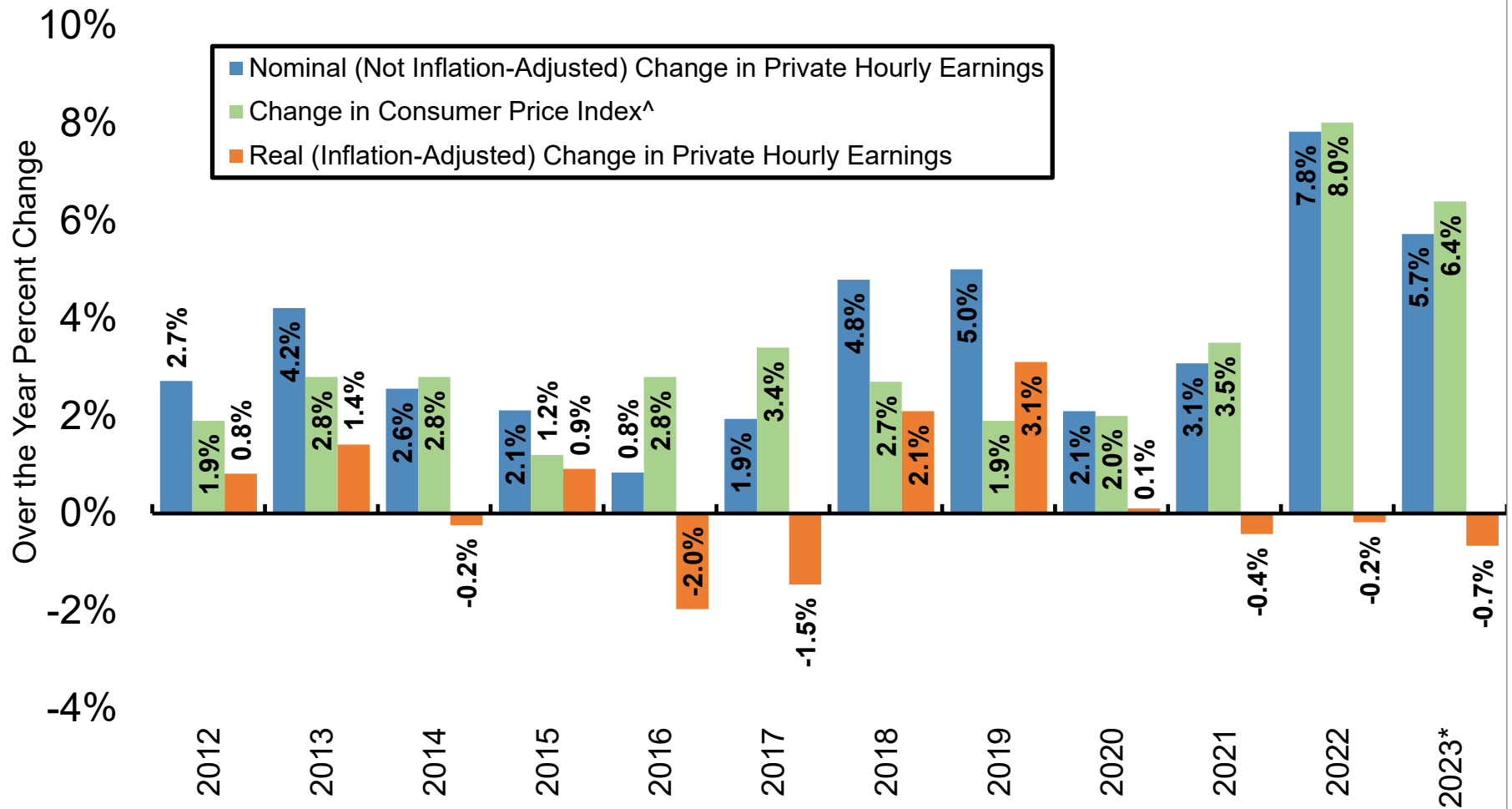
Percent Change in Average Weekly Earnings Since 2019, by Select Colorado Industry



Source: Colorado Department of Labor and Employment; Bureau of Labor Statistics

Data not seasonally adjusted. Note: each month on this chart represents a 12-month moving average and measures the percent change in average weekly earnings compared to the 2019 annual average for that industry.

Nominal and Real Percent Change in Colorado's Private Average Hourly Earnings Since 2012

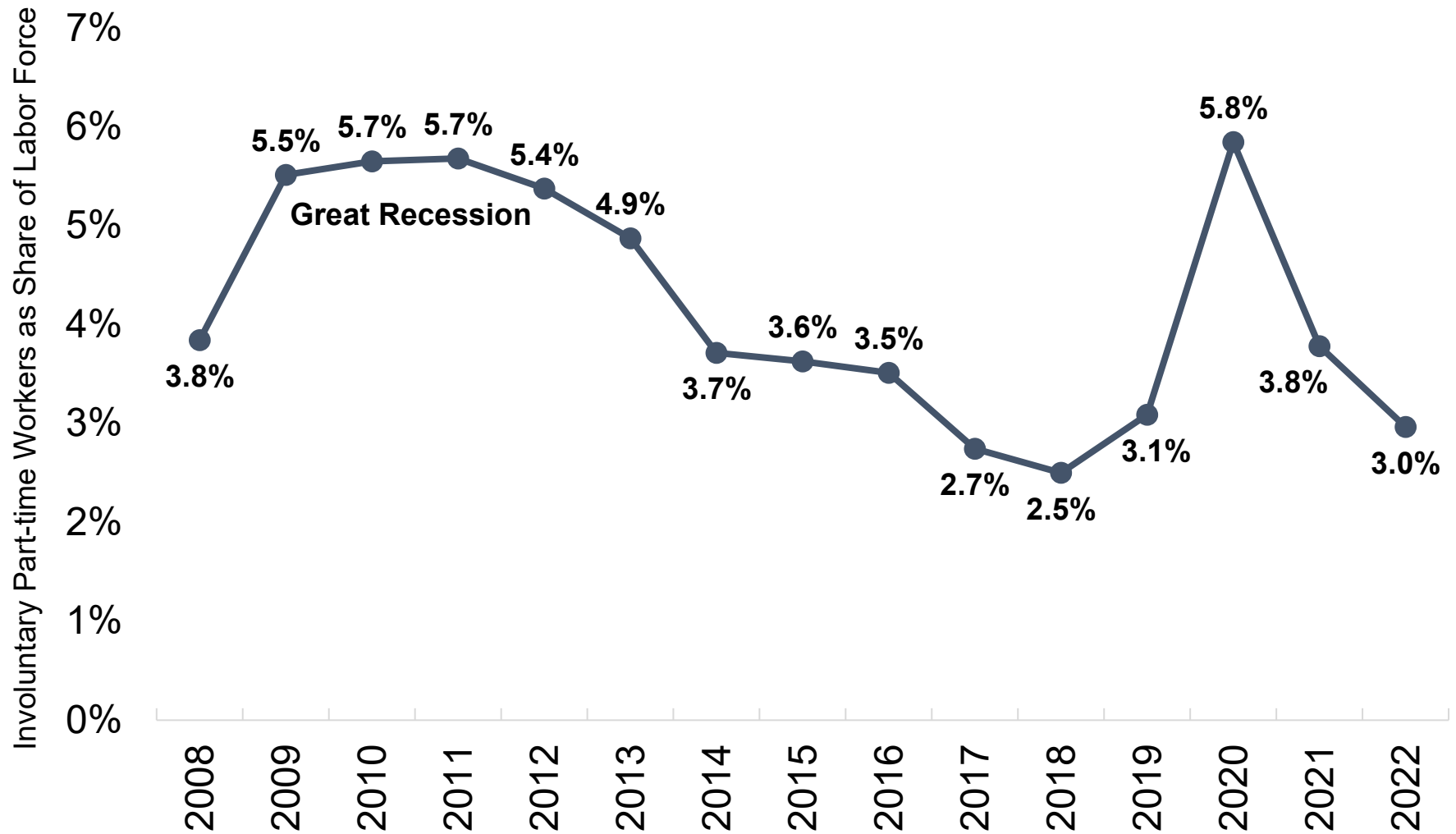


Source: Colorado Department of Labor and Employment estimates; Bureau of Labor Statistics

[^]Note: Denver-Aurora-Lakewood CPI-U estimates were utilized to adjust average hourly earnings for inflation.

That data is available here: <https://www.bls.gov/cpi/regional-resources.htm>. *2023 nominal earnings growth is measured using data for January compared to the same period the year prior, while real earnings were adjusted using the over-the-year change in CPI-U for January 2023.

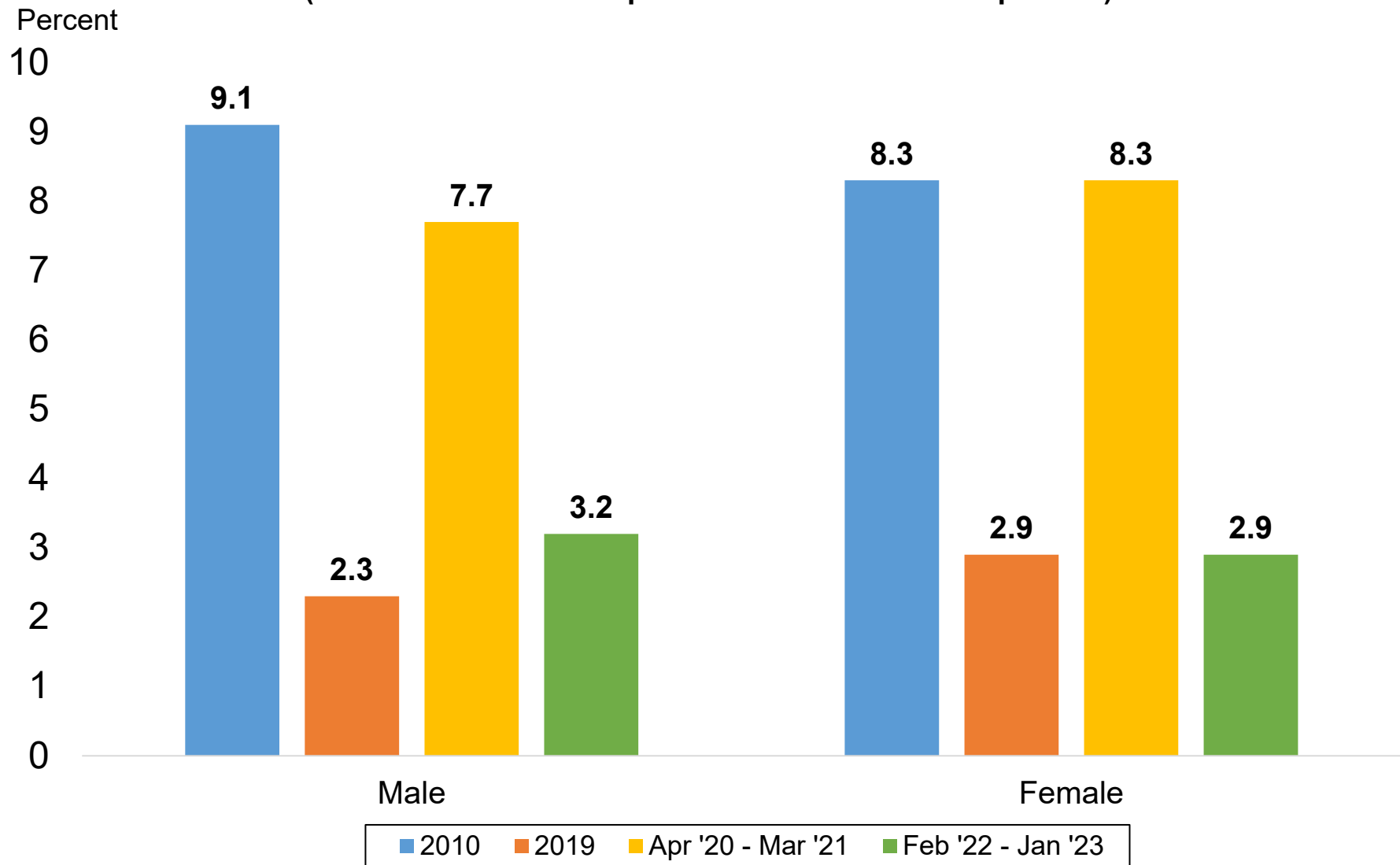
Involuntary Part-Time Workers as Share of Labor Force



Source: Current Population Survey

Data not seasonally adjusted. Involuntary part-time workers are those individuals who are working part-time hours (34 hours or less), but prefer full-time hours (35+ hours).

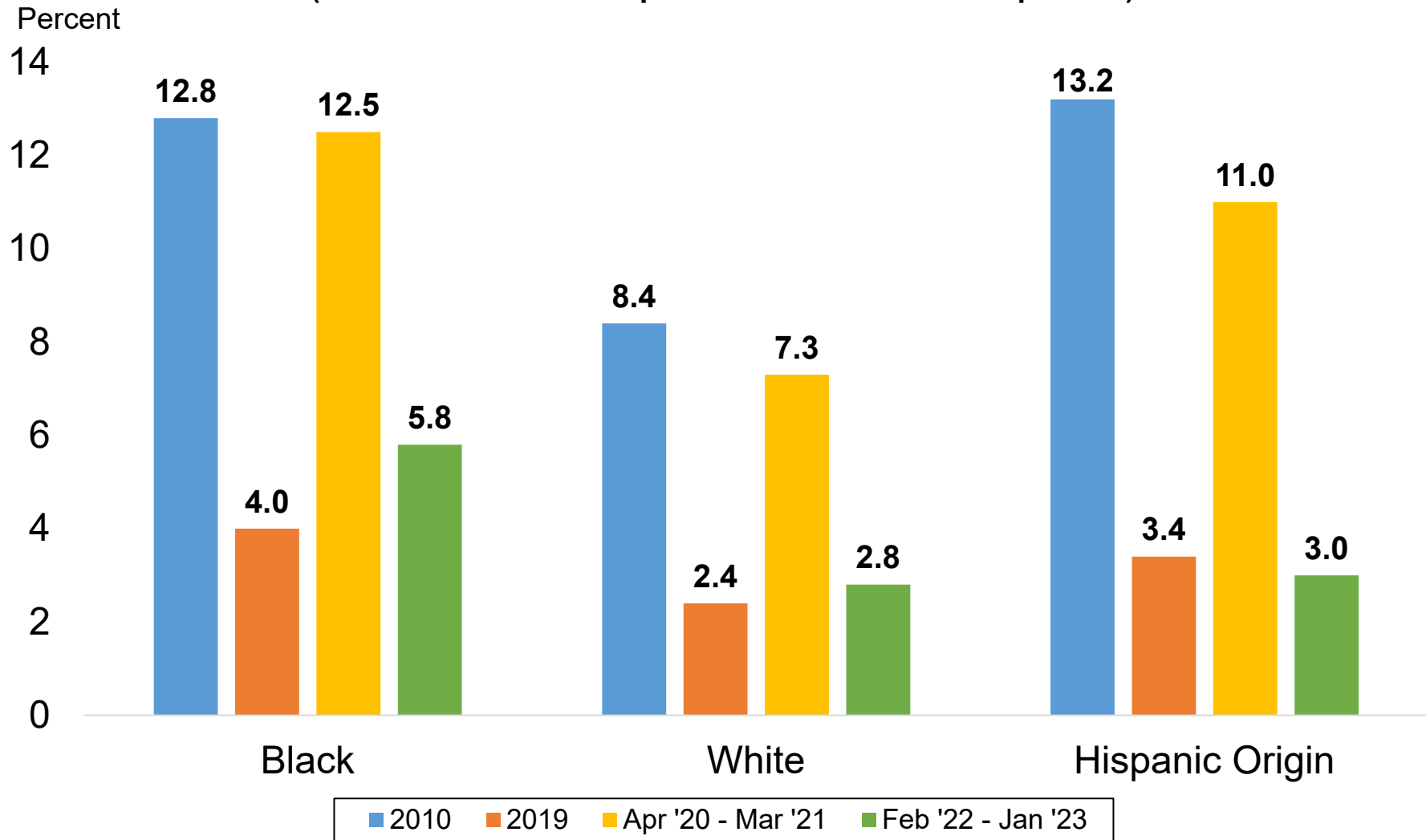
Unemployment Rates by Gender (Most recent 12-month period available vs. select periods)



Source: Current Population Survey

Data not seasonally adjusted. Unemployment rates by gender for individuals 16 years and older.

Unemployment Rates by Race & Ethnicity (Most recent 12-month period available vs. select periods)

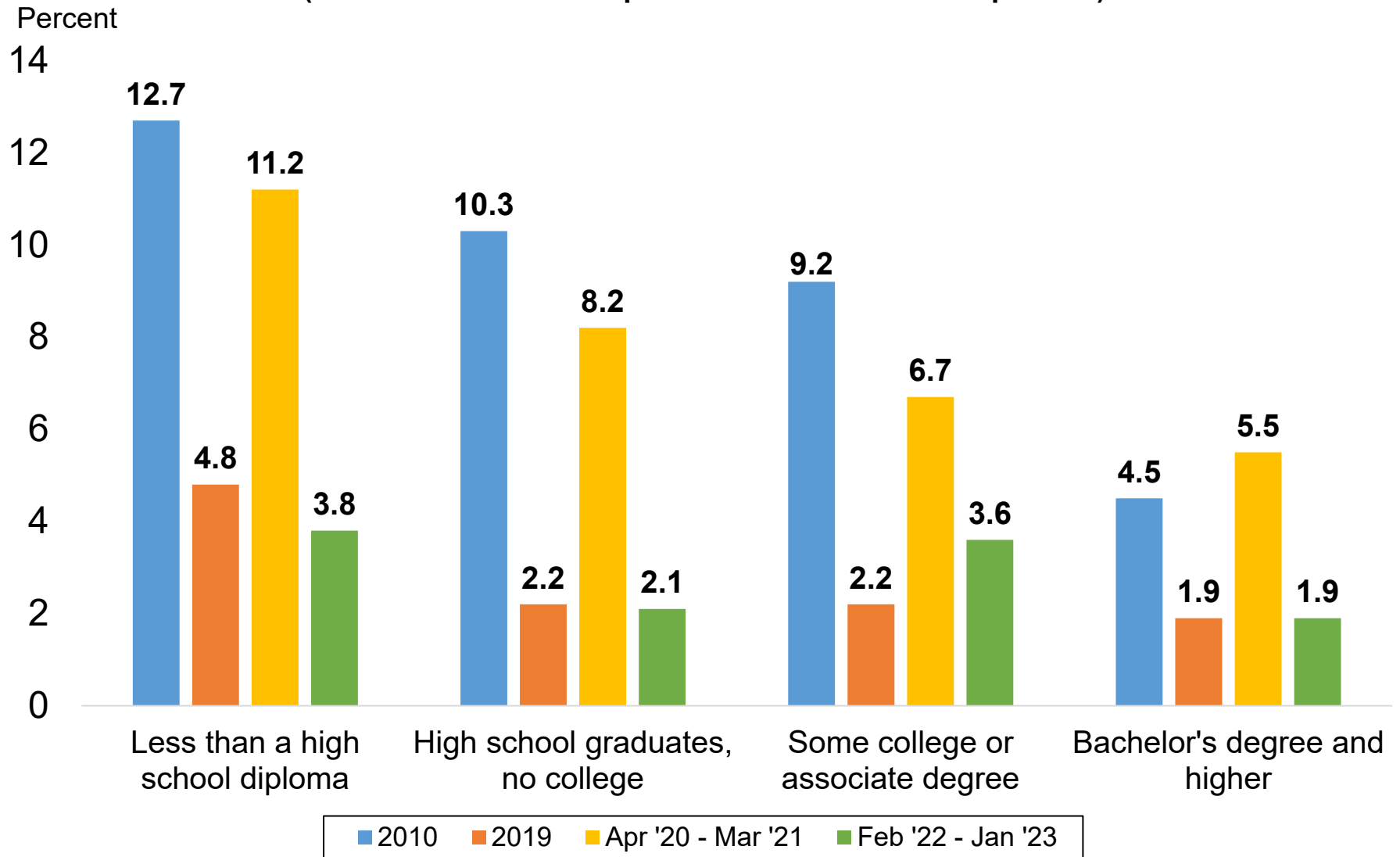


Source: Current Population Survey

Data not seasonally adjusted. Other race categories excluded due to small sample size. Hispanic origin category is not mutually exclusive (i.e. hispanic and non-hispanic ethnicities are represented in both race categories).

Unemployment Rates by Educational Attainment

(Most recent 12-month period available vs. select periods)

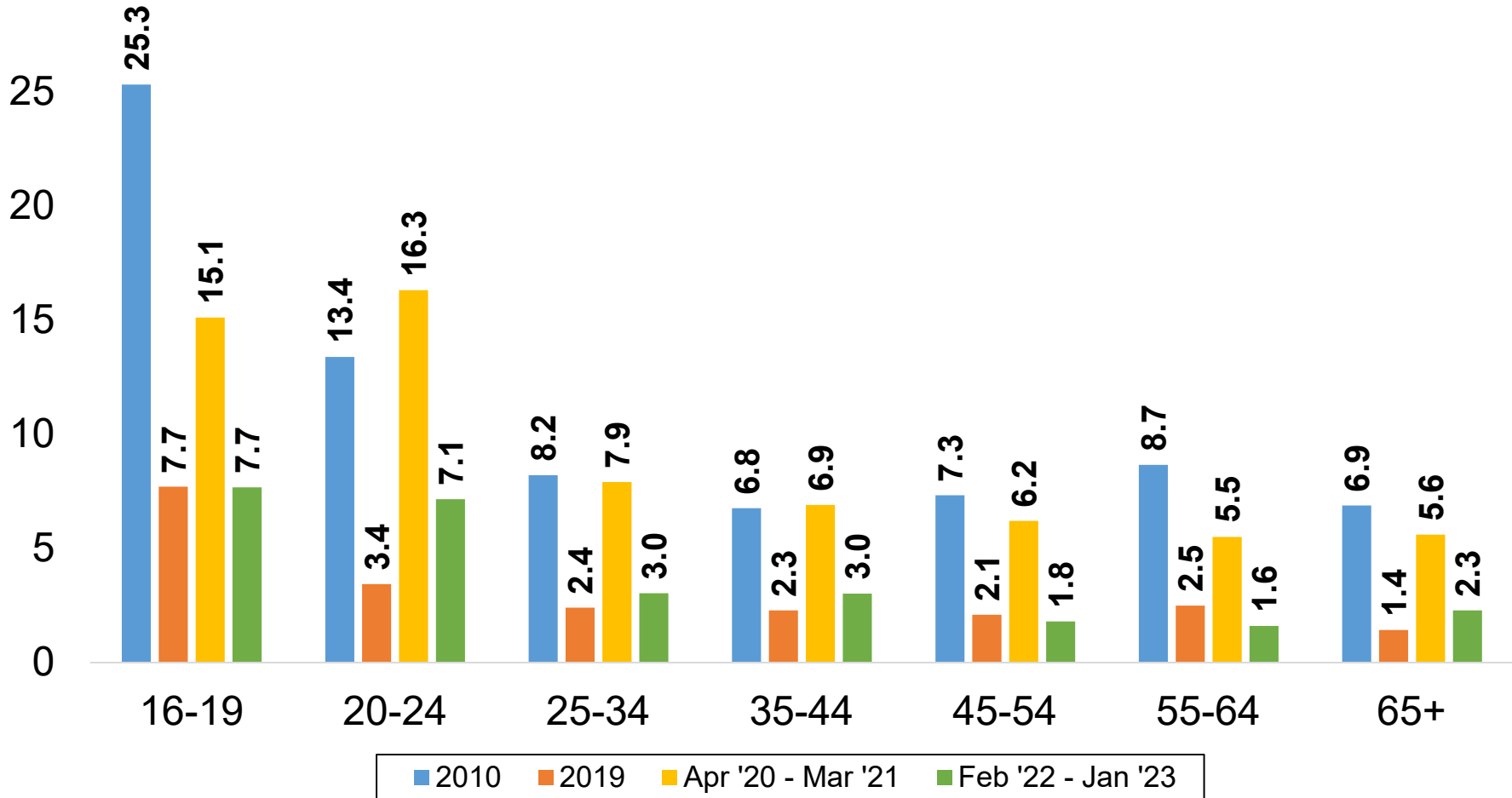


Source: Current Population Survey

Data not seasonally adjusted. Unemployment rates by educational attainment for individuals 25 years and over.

Unemployment Rates by Age Group (Most recent 12-month period available vs. select periods)

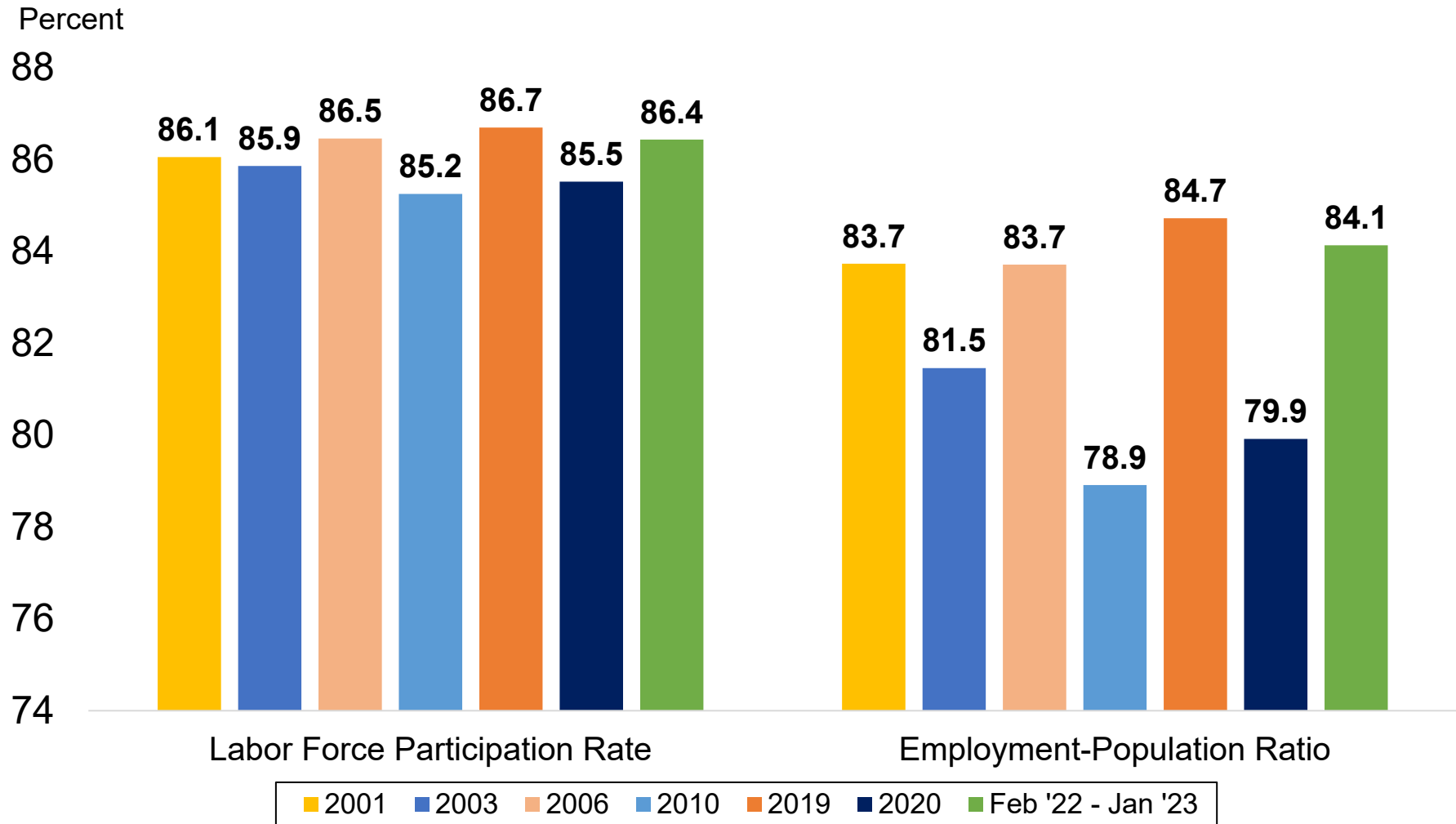
Percent
30



Source: Current Population Survey
Data not seasonally adjusted.

Colorado Labor Force Participation Rates and Employment-to-Population Ratios, Ages 25 to 54

(Most recent 12-month period available vs. select years)



Source: Current Population Survey
Data not seasonally adjusted.

LABOR FORCE SUMMARY
COLORADO

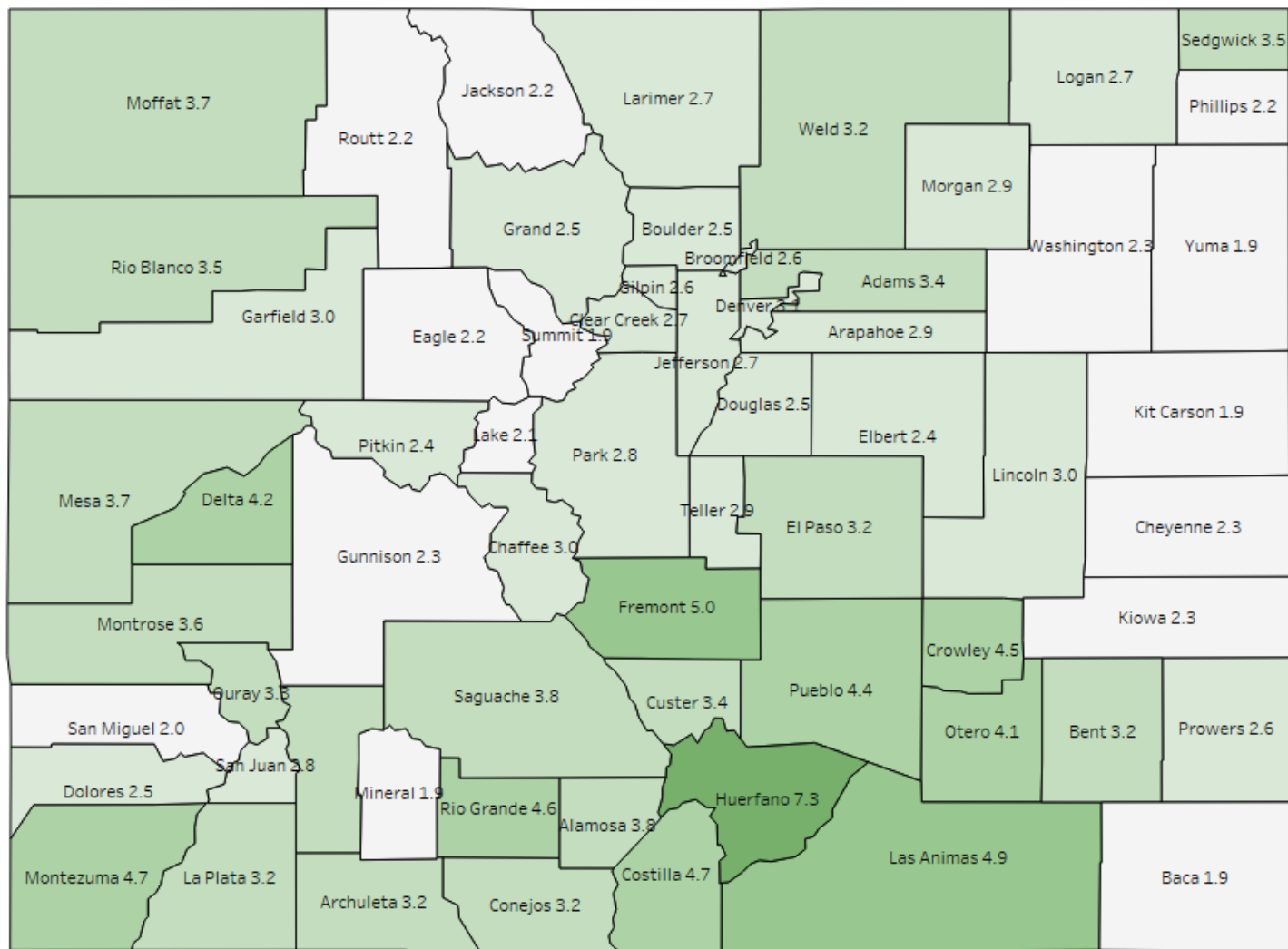
Preliminary Estimates for January 2023

LABOR FORCE DATA (VALUES IN THOUSANDS)					
SEASONALLY ADJUSTED:				Change from last:	
	Jan-23	Dec-22	Jan-22	Month	Year
Total Civilian Labor Force	3,206.4	3,198.3	3,199.5	8.0	6.8
Unemployment	90.4	89.1	127.0	1.3	-36.6
Unemployment Rate (%)	2.8	2.8	4.0	0.0	-1.2
Employment	3,115.9	3,109.2	3,072.5	6.7	43.4
UNADJUSTED FOR SEASONALITY:				Change from last:	
	Jan-23	Dec-22	Jan-22	Month	Year
Total Civilian Labor Force	3,215.9	3,202.3	3,186.4	13.5	29.5
Unemployment	96.7	81.1	134.2	15.5	-37.5
Unemployment Rate (%)	3.0	2.5	4.2	0.5	-1.2
Employment	3,119.2	3,121.2	3,052.2	-2.0	67.0

WAGE AND SALARY EMPLOYMENT DATA (VALUES IN THOUSANDS)					
SEASONALLY ADJUSTED:				Change from last:	
	Jan-23	Dec-22	Jan-22	Month	Year
Mining & Logging	21.9	21.6	20.4	0.3	1.5
Construction	180.9	182.0	180.1	-1.1	0.8
Manufacturing	153.9	154.6	152.2	-0.7	1.7
Trade, Transportation, & Utilities	501.3	501.1	495.1	0.2	6.2
Information	77.4	77.7	78.3	-0.3	-0.9
Financial Activities	178.3	179.6	181.0	-1.3	-2.7
Professional & Business Services	491.1	489.8	472.7	1.3	18.4
Educational & Health Services	355.0	352.8	349.0	2.2	6.0
Leisure & Hospitality	349.3	350.2	329.3	-0.9	20.0
Other Services	123.9	123.6	122.0	0.3	1.9
Government	450.0	449.2	445.9	0.8	4.1
TOTAL NONAG	2,883.0	2,882.2	2,826.0	0.8	57.0
Labor Disputants	0.0	0.0	0.0	0.0	0.0
UNADJUSTED FOR SEASONALITY:				Change from last:	
	Jan-23	Dec-22	Jan-22	Month	Year
Mining & Logging	21.6	21.7	20.1	-0.1	1.5
Construction	172.8	178.6	173.3	-5.8	-0.5
Manufacturing	152.3	154.5	151.3	-2.2	1.0
Trade, Transportation, & Utilities	502.5	515.1	497.0	-12.6	5.5
Information	77.3	77.7	78.0	-0.4	-0.7
Financial Activities	178.5	181.1	180.1	-2.6	-1.6
Professional & Business Services	479.9	489.3	462.7	-9.4	17.2
Educational & Health Services	353.8	353.0	346.9	0.8	6.9
Leisure & Hospitality	345.4	348.5	323.0	-3.1	22.4
Other Services	122.6	123.0	119.9	-0.4	2.7
Government	440.3	452.3	436.5	-12.0	3.8
TOTAL NONAG	2,847.0	2,894.8	2,788.8	-47.8	58.2
Labor Disputants	0.0	0.0	0.0	0.0	0.0

Source: Colorado Department of Labor & Employment; Bureau of Labor Statistics

County Unemployment Rates January 2023



Not Seasonally Adjusted Labor Force

	January 2023				December 2022			
	Labor Force	Employment	Unemployment	Rate	Labor force	Employment	Unemployment	Rate
Colorado	3,215,870	3,119,189	96,681	3.0	3,202,346	3,121,210	81,136	2.5
Metropolitan Statistical Area								
Boulder	203,404	198,395	5,009	2.5	201,999	197,828	4,171	2.1
Colorado Springs	376,165	364,195	11,970	3.2	370,760	360,762	9,998	2.7
Denver-Aurora-Lakewood	1,736,376	1,685,173	51,203	2.9	1,720,339	1,677,252	43,087	2.5
Fort Collins	207,016	201,380	5,636	2.7	209,338	204,615	4,723	2.3
Grand Junction	77,443	74,611	2,832	3.7	76,893	74,665	2,228	2.9
Greeley	168,433	163,057	5,376	3.2	169,617	165,027	4,590	2.7
Pueblo	76,669	73,329	3,340	4.4	76,199	73,407	2,792	3.7
Counties								
Adams	283,664	274,077	9,587	3.4	281,080	273,162	7,918	2.8
Alamosa	7,937	7,636	301	3.8	8,324	8,059	265	3.2
Arapahoe	377,681	366,572	11,109	2.9	374,024	364,558	9,466	2.5
Archuleta	6,837	6,619	218	3.2	7,002	6,819	183	2.6
Baca	1,921	1,884	37	1.9	2,119	2,089	30	1.4
Bent	1,672	1,619	53	3.2	1,846	1,792	54	2.9
Boulder	203,404	198,395	5,009	2.5	201,999	197,828	4,171	2.1
Broomfield	42,812	41,685	1,127	2.6	42,383	41,431	952	2.2
Chaffee	9,748	9,454	294	3.0	9,804	9,560	244	2.5
Cheyenne	962	940	22	2.3	1,092	1,072	20	1.8
Clear Creek	6,186	6,017	169	2.7	6,146	5,997	149	2.4
Conejos	3,775	3,655	120	3.2	4,053	3,951	102	2.5
Costilla	1,725	1,644	81	4.7	1,844	1,776	68	3.7
Crowley	1,342	1,282	60	4.5	1,376	1,331	45	3.3
Custer	2,268	2,192	76	3.4	2,348	2,282	66	2.8
Delta	12,541	12,014	527	4.2	13,257	12,844	413	3.1
Denver	439,791	426,078	13,713	3.1	435,240	423,763	11,477	2.6
Dolores	1,100	1,073	27	2.5	1,195	1,168	27	2.3
Douglas	209,308	204,023	5,285	2.5	207,407	202,932	4,475	2.2
Eagle	36,805	35,985	820	2.2	36,256	35,523	733	2.0
El Paso	362,591	351,014	11,577	3.2	357,368	347,703	9,665	2.7
Elbert	15,893	15,515	378	2.4	16,068	15,754	314	2.0
Fremont	14,109	13,401	708	5.0	14,076	13,505	571	4.1
Garfield	32,219	31,238	981	3.0	32,032	31,244	788	2.5
Gilpin	3,954	3,852	102	2.6	3,925	3,838	87	2.2
Grand	9,986	9,737	249	2.5	9,765	9,545	220	2.3
Gunnison	11,543	11,275	268	2.3	11,958	11,708	250	2.1
Hinsdale	387	373	14	3.6	417	405	12	2.9
Huerfano	2,371	2,199	172	7.3	2,512	2,375	137	5.5
Jackson	941	920	21	2.2	1,026	1,008	18	1.8
Jefferson	345,389	335,981	9,408	2.7	342,384	334,406	7,978	2.3
Kiowa	818	799	19	2.3	945	930	15	1.6
Kit Carson	3,930	3,856	74	1.9	4,288	4,229	59	1.4
La Plata	30,931	29,951	980	3.2	31,464	30,651	813	2.6
Lake	5,181	5,071	110	2.1	5,169	5,073	96	1.9
Larimer	207,016	201,380	5,636	2.7	209,338	204,615	4,723	2.3
Las Animas	5,778	5,497	281	4.9	6,063	5,807	256	4.2
Lincoln	2,093	2,031	62	3.0	2,195	2,135	60	2.7
Logan	9,805	9,536	269	2.7	10,242	10,030	212	2.1
Mesa	77,443	74,611	2,832	3.7	76,893	74,665	2,228	2.9
Mineral	534	524	10	1.9	507	498	9	1.8
Moffat	6,976	6,716	260	3.7	6,906	6,702	204	3.0
Montezuma	12,101	11,536	565	4.7	12,340	11,929	411	3.3
Montrose	20,901	20,143	758	3.6	21,298	20,694	604	2.8
Morgan	15,210	14,767	443	2.9	15,635	15,251	384	2.5
Otero	7,526	7,217	309	4.1	7,914	7,640	274	3.5
Ouray	2,433	2,352	81	3.3	2,491	2,424	67	2.7
Park	11,698	11,373	325	2.8	11,682	11,411	271	2.3
Phillips	2,205	2,157	48	2.2	2,533	2,495	38	1.5
Pitkin	10,976	10,712	264	2.4	10,952	10,682	270	2.5
Prowers	5,892	5,738	154	2.6	6,329	6,195	134	2.1
Pueblo	76,669	73,329	3,340	4.4	76,199	73,407	2,792	3.7
Rio Blanco	2,712	2,617	95	3.5	2,920	2,836	84	2.9
Rio Grande	4,977	4,748	229	4.6	5,347	5,162	185	3.5
Routt	16,712	16,351	361	2.2	16,462	16,139	323	2.0
Saguache	3,161	3,042	119	3.8	3,408	3,312	96	2.8
San Juan	539	524	15	2.8	523	508	15	2.9
San Miguel	6,308	6,183	125	2.0	6,049	5,901	148	2.4
Sedgwick	913	881	32	3.5	1,088	1,061	27	2.5
Summit	23,943	23,499	444	1.9	23,292	22,911	381	1.6
Teller	13,574	13,181	393	2.9	13,392	13,059	333	2.5
Washington	2,583	2,523	60	2.3	2,831	2,775	56	2.0
Weld	168,433	163,057	5,376	3.2	169,617	165,027	4,590	2.7
Yuma	5,033	4,935	98	1.9	5,711	5,628	83	1.5

All estimates made in cooperation with the U.S. Department of Labor, Bureau of Labor Statistics and adjusted to Current Population Survey data. Estimates have been revised to incorporate population data from the American Community Survey.

Estimates are subject to further revision through April 21, 2023 as the U.S. Department of Labor, Bureau of Labor Statistics completes the benchmarking process for 2022 estimates.

Not Seasonally Adjusted Labor Force

	January 2023				January 2022			
	Labor Force	Employment	Unemployment	Rate	Labor force	Employment	Unemployment	Rate
Colorado	3,215,870	3,119,189	96,681	3.0	3,186,411	3,052,196	134,215	4.2
Metropolitan Statistical Area								
Boulder	203,404	198,395	5,009	2.5	198,763	191,917	6,846	3.4
Colorado Springs	376,165	364,195	11,970	3.2	371,186	354,811	16,375	4.4
Denver-Aurora-Lakewood	1,736,376	1,685,173	51,203	2.9	1,719,204	1,647,827	71,377	4.2
Fort Collins	207,016	201,380	5,636	2.7	208,640	200,838	7,802	3.7
Grand Junction	77,443	74,611	2,832	3.7	76,079	72,267	3,812	5.0
Greeley	168,433	163,057	5,376	3.2	167,869	160,262	7,607	4.5
Pueblo	76,669	73,329	3,340	4.4	76,681	71,845	4,836	6.3
Counties								
Adams	283,664	274,077	9,587	3.4	281,986	268,484	13,502	4.8
Alamosa	7,937	7,636	301	3.8	7,946	7,543	403	5.1
Arapahoe	377,681	366,572	11,109	2.9	374,541	358,211	16,330	4.4
Archuleta	6,837	6,619	218	3.2	6,794	6,484	310	4.6
Baca	1,921	1,884	37	1.9	2,026	1,984	42	2.1
Bent	1,672	1,619	53	3.2	1,742	1,651	91	5.2
Boulder	203,404	198,395	5,009	2.5	198,763	191,917	6,846	3.4
Broomfield	42,812	41,685	1,127	2.6	42,252	40,786	1,466	3.5
Chaffee	9,748	9,454	294	3.0	9,467	9,106	361	3.8
Cheyenne	962	940	22	2.3	1,049	1,027	22	2.1
Clear Creek	6,186	6,017	169	2.7	6,144	5,883	261	4.2
Conejos	3,775	3,655	120	3.2	3,840	3,678	162	4.2
Costilla	1,725	1,644	81	4.7	1,730	1,631	99	5.7
Crowley	1,342	1,282	60	4.5	1,353	1,291	62	4.6
Custer	2,268	2,192	76	3.4	2,156	2,072	84	3.9
Delta	12,541	12,014	527	4.2	12,979	12,308	671	5.2
Denver	439,791	426,078	13,713	3.1	435,375	416,437	18,938	4.3
Dolores	1,100	1,073	27	2.5	1,108	1,063	45	4.1
Douglas	209,308	204,023	5,285	2.5	206,189	199,492	6,697	3.2
Eagle	36,805	35,985	820	2.2	36,080	34,827	1,253	3.5
El Paso	362,591	351,014	11,577	3.2	357,855	342,020	15,835	4.4
Elbert	15,893	15,515	378	2.4	15,846	15,340	506	3.2
Fremont	14,109	13,401	708	5.0	14,298	13,369	929	6.5
Garfield	32,219	31,238	981	3.0	31,296	29,979	1,317	4.2
Gilpin	3,954	3,852	102	2.6	3,914	3,760	154	3.9
Grand	9,986	9,737	249	2.5	9,797	9,457	340	3.5
Gunnison	11,543	11,275	268	2.3	11,037	10,668	369	3.3
Hinsdale	387	373	14	3.6	361	349	12	3.3
Huerfano	2,371	2,199	172	7.3	2,425	2,229	196	8.1
Jackson	941	920	21	2.2	931	901	30	3.2
Jefferson	345,389	335,981	9,408	2.7	341,458	328,325	13,133	3.8
Kiowa	818	799	19	2.3	883	861	22	2.5
Kit Carson	3,930	3,856	74	1.9	4,026	3,913	113	2.8
La Plata	30,931	29,951	980	3.2	29,865	28,539	1,326	4.4
Lake	5,181	5,071	110	2.1	4,890	4,718	172	3.5
Larimer	207,016	201,380	5,636	2.7	208,640	200,838	7,802	3.7
Las Animas	5,778	5,497	281	4.9	6,032	5,649	383	6.3
Lincoln	2,093	2,031	62	3.0	2,205	2,125	80	3.6
Logan	9,805	9,536	269	2.7	10,073	9,683	390	3.9
Mesa	77,443	74,611	2,832	3.7	76,079	72,267	3,812	5.0
Mineral	534	524	10	1.9	483	466	17	3.5
Moffat	6,976	6,716	260	3.7	6,930	6,607	323	4.7
Montezuma	12,101	11,536	565	4.7	12,119	11,429	690	5.7
Montrose	20,901	20,143	758	3.6	21,033	20,038	995	4.7
Morgan	15,210	14,767	443	2.9	15,587	14,900	687	4.4
Otero	7,526	7,217	309	4.1	7,768	7,335	433	5.6
Ouray	2,433	2,352	81	3.3	2,469	2,366	103	4.2
Park	11,698	11,373	325	2.8	11,499	11,109	390	3.4
Phillips	2,205	2,157	48	2.2	2,354	2,287	67	2.8
Pitkin	10,976	10,712	264	2.4	10,626	10,229	397	3.7
Prowers	5,892	5,738	154	2.6	5,992	5,749	243	4.1
Pueblo	76,669	73,329	3,340	4.4	76,681	71,845	4,836	6.3
Rio Blanco	2,712	2,617	95	3.5	2,711	2,566	145	5.3
Rio Grande	4,977	4,748	229	4.6	5,223	4,877	346	6.6
Routt	16,712	16,351	361	2.2	16,236	15,710	526	3.2
Saguache	3,161	3,042	119	3.8	3,283	3,122	161	4.9
San Juan	539	524	15	2.8	529	510	19	3.6
San Miguel	6,308	6,183	125	2.0	5,933	5,740	193	3.3
Sedgwick	913	881	32	3.5	1,037	999	38	3.7
Summit	23,943	23,499	444	1.9	23,145	22,479	666	2.9
Teller	13,574	13,181	393	2.9	13,331	12,791	540	4.1
Washington	2,583	2,523	60	2.3	2,720	2,637	83	3.1
Weld	168,433	163,057	5,376	3.2	167,869	160,262	7,607	4.5
Yuma	5,033	4,935	98	1.9	5,422	5,276	146	2.7

All estimates made in cooperation with the U.S. Department of Labor, Bureau of Labor Statistics and adjusted to Current Population Survey data. Estimates have been revised to incorporate population data from the American Community Survey.

Estimates are subject to further revision through April 21, 2023 as the U.S. Department of Labor, Bureau of Labor Statistics completes the benchmarking process for 2022 estimates.

Colorado LMI Data Overview

January 2023

Employment					
	Jan-23	Dec-22	Jan-22	Change from previous:	
				Period	Year
Nonfarm Wage and Salary Employment (SA)	2,883,000	2,882,200	2,826,000	800	57,000
Total Resident Employment (SA)	3,115,900	3,109,200	3,072,500	6,700	43,400
	Q2 2022	Q1 2022	Q2 2021		
UI Covered Total Employment	2,821,406	2,756,407	2,686,561	64,999	134,845
UI Covered Private Employment	2,389,121	2,332,408	2,262,701	56,713	126,420

Unemployment					
	Jan-23	Dec-22	Jan-22	Change from previous:	
				Period	Year
Unemployment (SA)	90,400	89,100	127,000	1,300	(36,600)
Percent Unemployed (SA)	2.8%	2.8%	4.0%	0.0	(1.2)
	Jan-23	Dec-22	Jan-22		
Initial Claims	17,177	13,633	22,935	3,544	(5,758)
Continued Weeks Claimed	112,006	96,469	128,445	15,537	(16,439)

Wages and Earnings					
	Q2 2022	Q1 2022	Q2 2021	Change from previous:	
				Period	Year
Total Average Weekly Wage	\$1,361	\$1,455	\$1,283	(\$94)	\$78
Private Average Weekly Wage	\$1,379	\$1,494	\$1,298	(\$115)	\$81
	Jan-23	Dec-22	Jan-22		
Average Weekly Earnings (Construction)	\$1,189.30	\$1,154.03	\$1,189.63	\$35.27	(\$0.33)
Average Weekly Earnings (Manufacturing)	\$1,160.83	\$1,124.48	\$1,011.62	\$36.35	\$149.21

CO Unemployment Insurance Trust Fund					
	Dec-22	Nov-22	Dec-21	Change from previous:	
				Period	Year
Employer Contributions	\$5,520,474	\$48,426,875	\$4,410,014	(\$42,906,401)	\$1,110,460
Benefits Paid	\$38,165,313	\$34,628,156	\$40,749,909	\$3,537,157	(\$2,584,597)
Average Weekly Benefit Amount	\$539.68	\$528.12	\$417.23	\$11.55	\$122.45
Duration (weeks)	10.97	11.52	17.11	(0.55)	(6.15)
Outstanding Title XII Loan Balance	\$0	\$0	\$1,013,089,861	\$0	(1,013,089,861)

Consumer Price Index for All Urban Consumers					
Not seasonally adjusted	Jan-23	Nov-22	Jan-22	% Change from previous:	
				Period	Year
Denver-Aurora-Lakewood	312.392	309.655	293.580	0.9%	6.4%
US City Average	299.170	297.711	281.148	0.5%	6.4%

(Most current data available for all categories)