

PRESS RELEASE

Colorado Department of Labor and Employment • 633 17th Street, Suite 1200 • Denver, CO 80202 • (303) 318-8004 • Fax: (303) 318-8070

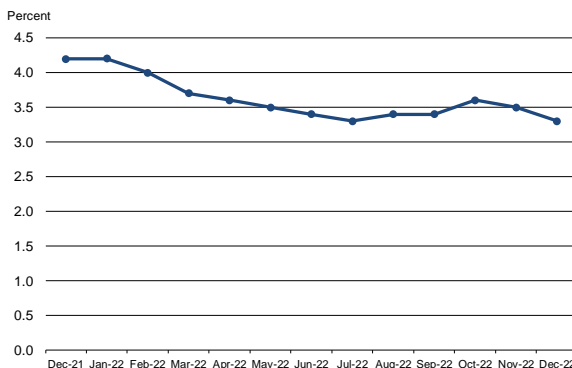
For Immediate Release

Date: January 20, 2023/ 8:00 A.M.
Contact: Office of Government, Policy and Public Relations
Email: cdle_pr@state.co.us
Web: www.colmigateway.com

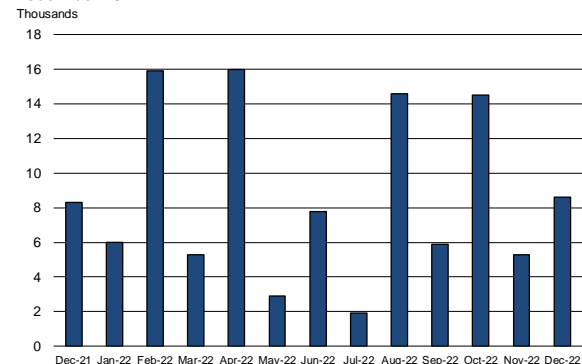
Colorado Employment Situation – December 2022

8,600 Nonfarm Payroll Jobs Added in December; Unemployment Rate Declines to 3.3%

Colorado unemployment rate, seasonally adjusted
December 2021 - December 2022



Colorado nonfarm payroll employment over-the-month
change, seasonally adjusted, December 2021 -
December 2022



Household survey data

- According to the survey of households, Colorado's seasonally adjusted **unemployment rate** decreased two-tenths of a percentage point in December to 3.3 percent. The **number of unemployed individuals** dropped by 6,700 over the same time period to 106,700. Colorado's unemployment rate has ranged between 3.3 and 3.6 percent since April. The national unemployment rate declined by one-tenth of a percentage point to 3.5 percent, which translates to approximately 5.7 million unemployed.
- Colorado's **labor force** decreased by 7,200 in December to 3,244,700. The share of Coloradans participating in the labor force fell slightly to 69.0 percent in December, compared to 69.2 percent the month prior. The U.S. labor force participation rate was 62.3 percent in December, rising one-tenth of a percentage point from the month prior.
- The **number of individuals employed** in Colorado declined by 500 in December to 3,138,000, which represents 66.7 percent of the state's 16+ population. The rate of 66.7 percent is nearly one and a half percentage points higher than a year ago and two-tenths of a percentage point higher than it was in February 2020. The national employment-to-population ratio was 60.1 percent in December and remains below its February 2020 level of 61.2 percent.

Establishment survey data

Employers in Colorado added 8,600 **nonfarm payroll jobs** from November to December for a total of 2,911,500 jobs, according to the survey of business establishments. Private sector payroll jobs increased 8,000 and government added 600 jobs. Over the past 32 months, Colorado has added 466,400 nonfarm payroll jobs, compared to losses totaling 374,500 in March and April 2020. That translates to a **job recovery rate** of 124.5 percent, which exceeds the U.S. rate of 105.6 percent.

Since May 2020, Colorado's **private sector** has grown by 458,500 jobs, compared to declines of 358,800 in early 2020. That translates to a **job recovery rate** of 127.8 percent and outpaces the U.S. rate of 108.0 percent.

Other highlights from the establishment survey:

- **November estimates** were revised up to 2,902,900, and the over the month change from October to November was a gain of 5,300 rather than the originally estimated increase of 4,300 (monthly revisions are based on additional responses from businesses and government agencies since the last published estimates).
- **Private industry sectors with significant job gains** in December were: professional and business services (~5,000), leisure and hospitality (~4,400), other services (~1,700), and manufacturing (~1,200). Significant over the month private sector **job loss** occurred in educational and health services (~2,600) and financial activities (~1,100).
- **Since December 2021**, nonfarm payroll jobs have increased 104,700, with the private sector growing by 94,800 and government adding 9,900 jobs. The largest **private sector job gains** were in professional and business services (~31,900), leisure and hospitality (~20,300), and educational and health services (~13,300). During that same period financial activities (~3,400) **payroll jobs declined**. Colorado's **rate of job growth** over the past year is 3.7 percent, outpacing the U.S. rate of 3.0 percent.
- Over the year, the **average workweek** for all Colorado employees on private nonfarm payrolls decreased from 33.1 to 32.9 hours, while **average hourly earnings** grew from \$33.36 to \$35.52, two dollars and seventy cents more than the national average hourly earnings of \$32.82.

###

All Colorado estimates from the establishment and household surveys, including greater geographic detail, are available at: <http://www.colmigateway.com>. Estimates for all states and the nation are available at: <http://www.bls.gov>.

For data visualizations, visit public.tableau.com/app/profile/cdle.lmi

The **January 2023 Colorado Employment Situation** will be released at 8:00 AM on Monday, March 13, 2023. Revised statewide estimates for 2022 and 2021 and some updated local information will also be released. The full schedule of release dates for calendar year 2023 estimates is available at www.colmigateway.com.

###

Technical Notes

This release provides information on industry employment and labor force statistics for December 2022, the most current estimates available from the Colorado Department of Labor and Employment. The reference period for the establishment survey was the pay period that includes the 12th of the month. While the household survey's reference period typically covers the week that includes the 12th of the month, that shifted to the week that includes the 5th of the month for December. For more information on these infrequent reference week shifts, go to <https://www.bls.gov/cps/definitions.htm#refweek>.

The unemployment rate, labor force, labor force participation, total employment and the number of unemployed are based on a survey of households. The total employment estimate derived from this survey is intended to measure the number of people employed.

Nonfarm payroll jobs estimates are based on a survey of business establishments and government agencies, and are intended to measure the number of jobs, not the number of people employed. Other series based on this survey include private sector average weekly hours, average hourly earnings and average weekly earnings.

The business establishment survey covers about seven times the number of households surveyed and is therefore considered a more reliable indicator of economic conditions. Because the estimates are based on two separate surveys, one measuring jobs by worksite and the other measuring persons employed and unemployed by household, estimates based on these surveys may provide seemingly conflicting results.

###

Supplemental information available in following pages

DECEMBER 2022

EMPLOYMENT SITUATION SUPPLEMENTAL CHARTS

January 20, 2023

This briefing provides information on industry employment and labor force statistics, derived from surveys of business establishments and households. The reference period for the establishment survey was the pay period that includes the 12th of the month. While the household survey's reference period also typically covers the week that includes the 12th of the month, that shifted to the week that includes the 5th of the month for December (holiday season adjustment).

Colorado and U.S. Unemployment Rates Both Decline in December

Percent
15

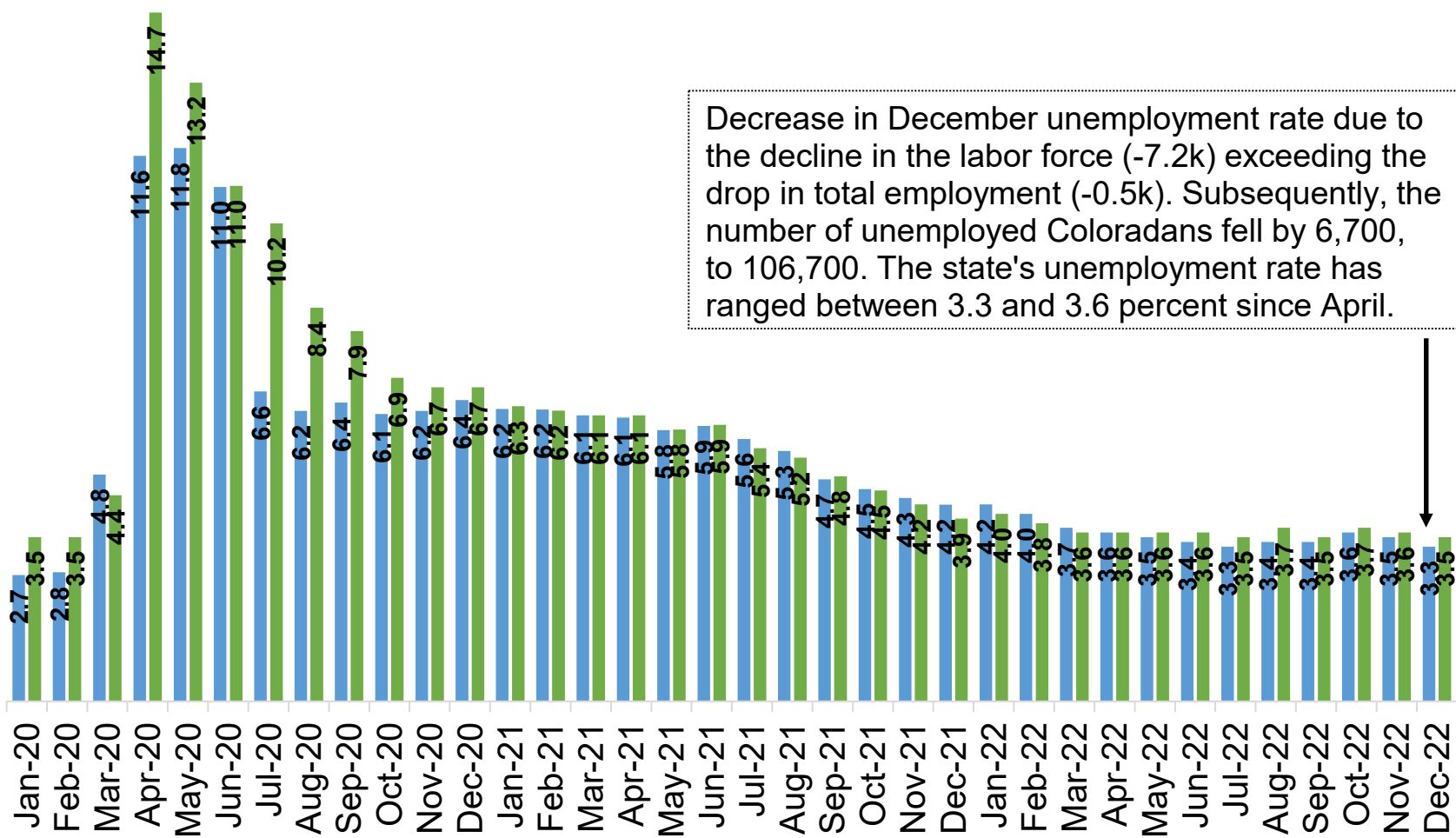
12

9

6

3

0

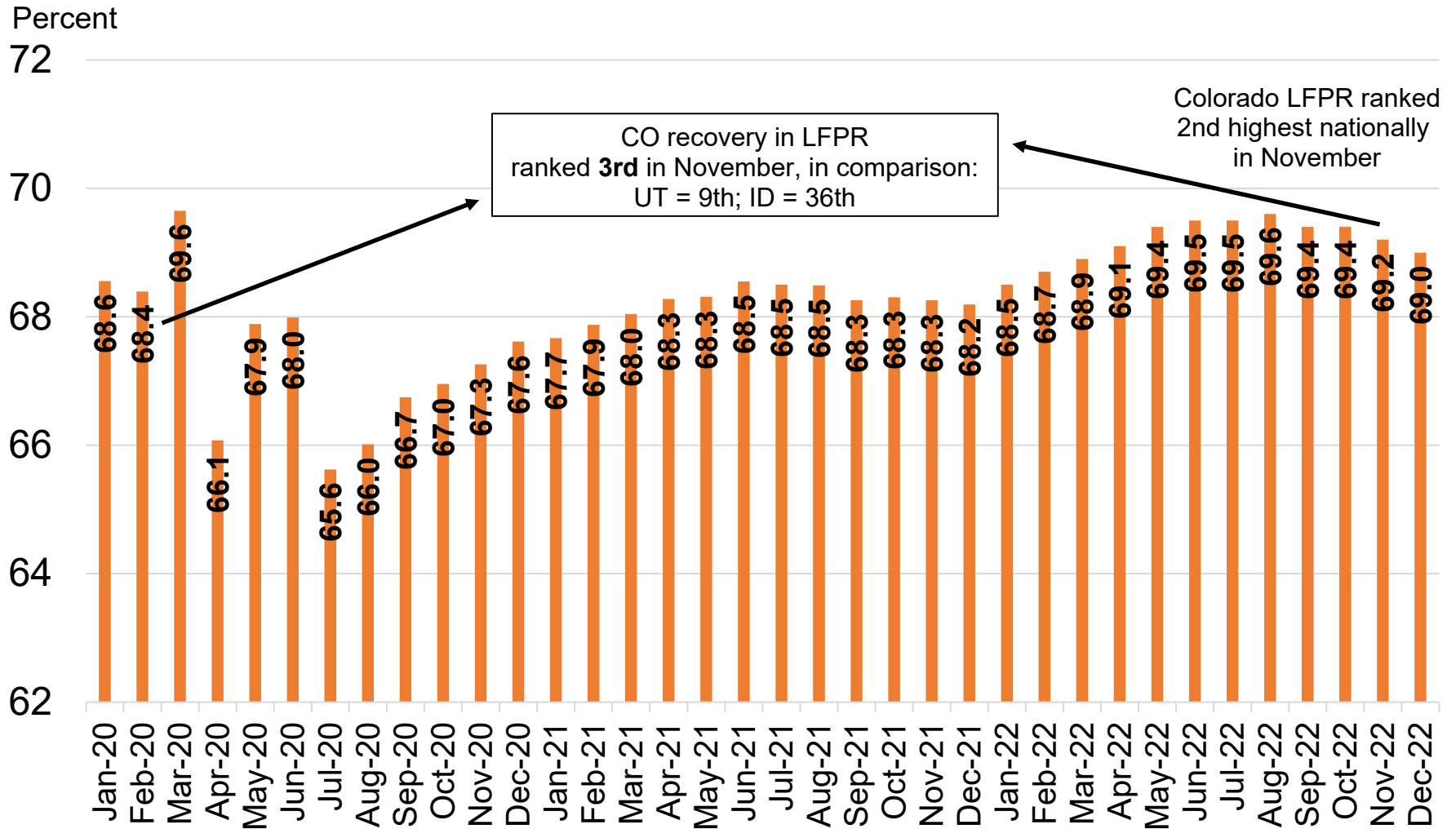


Decrease in December unemployment rate due to the decline in the labor force (-7.2k) exceeding the drop in total employment (-0.5k). Subsequently, the number of unemployed Coloradans fell by 6,700, to 106,700. The state's unemployment rate has ranged between 3.3 and 3.6 percent since April.

Source: Colorado Department of Labor and Employment; Bureau of Labor Statistics
Data seasonally adjusted

■ Colorado ■ U.S.

Colorado's Labor Force Participation Rate Moves Down to 69.0 Percent in December



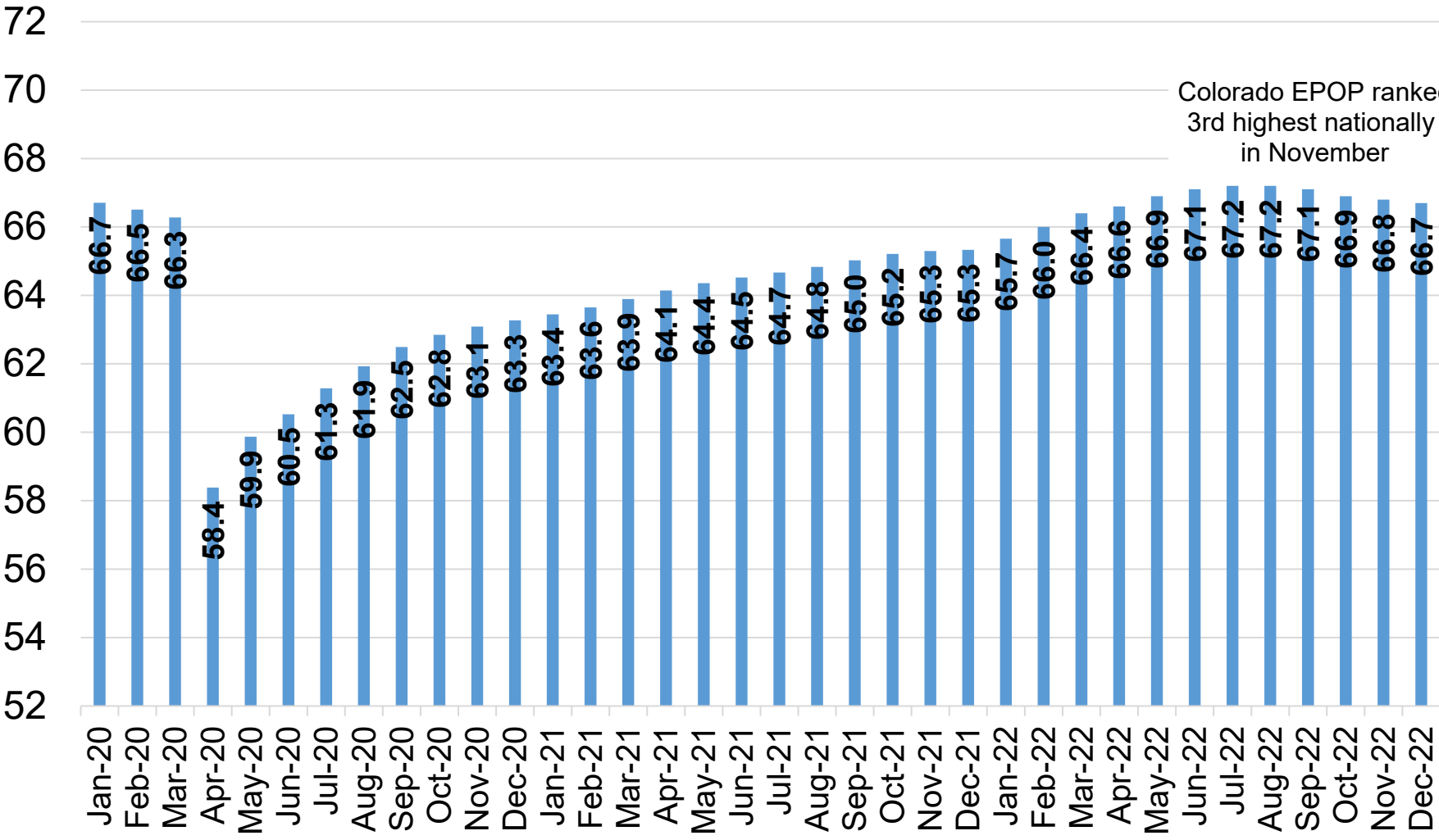
Source: Colorado Department of Labor and Employment; Bureau of Labor Statistics

Data seasonally adjusted. Estimates share of Colorado's 16+ population that is in the labor force in a given month.

For further information on labor force definitions, go here: <https://www.bls.gov/lau/laufaq.htm>

Colorado's Employment-to-Population Ratio Declines Again, but Matches January 2020 Rate

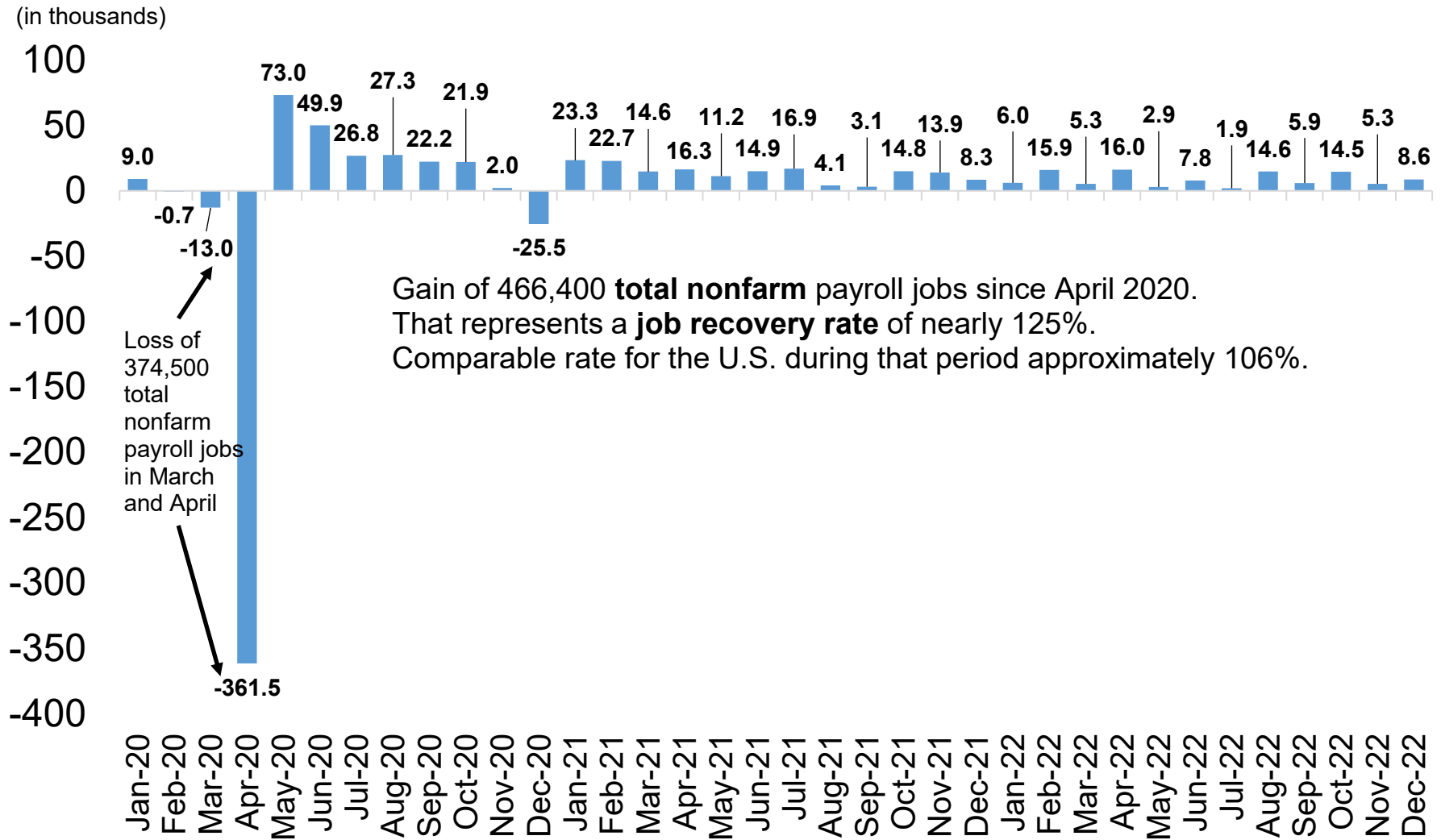
Percent



Colorado EPOP ranked 3rd highest nationally in November

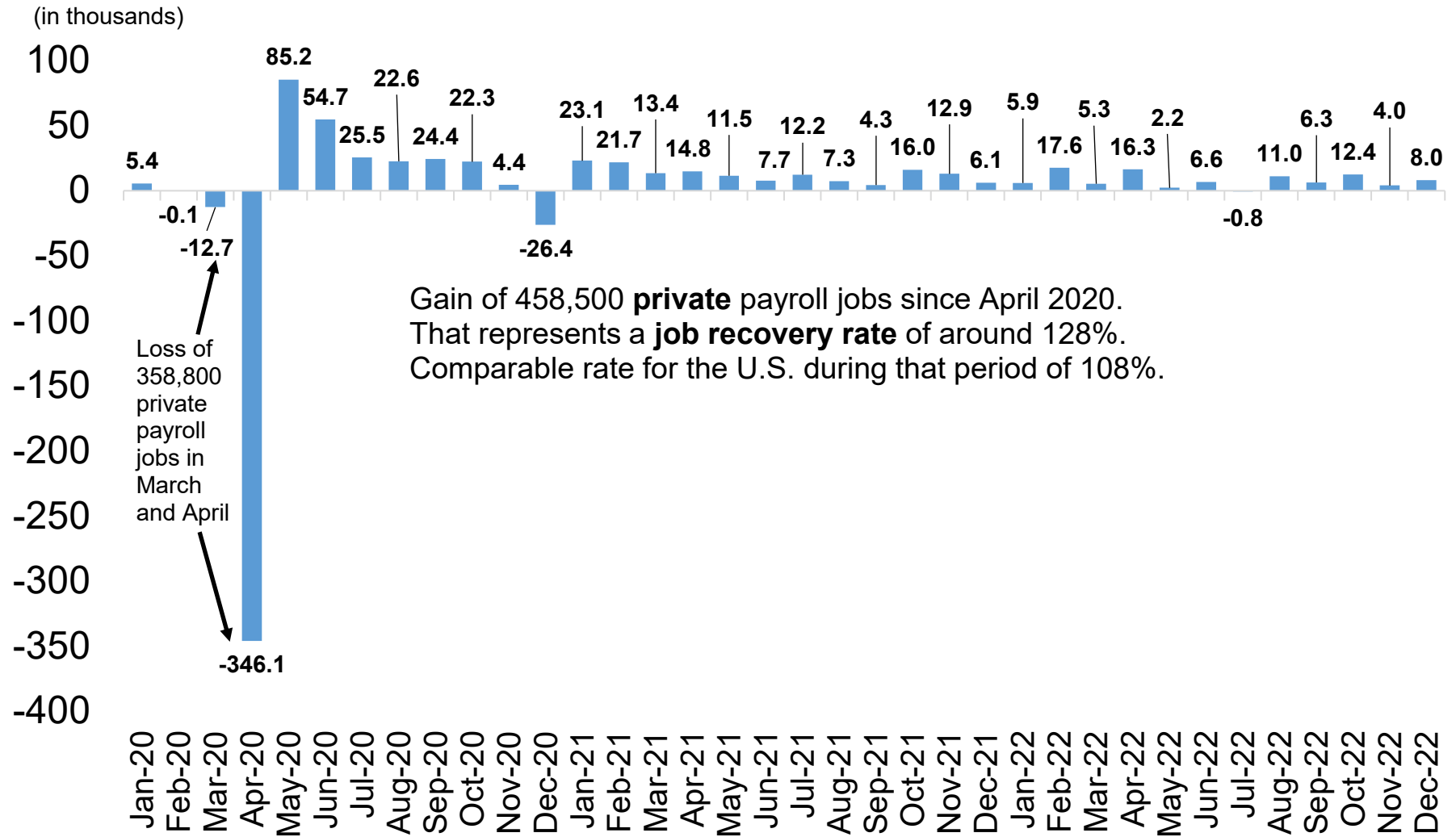
Source: Colorado Department of Labor and Employment; Bureau of Labor Statistics
 Data seasonally adjusted. Estimates share of Colorado's 16+ population that is employed in a given month.

Colorado Added 8,600 Total Nonfarm Jobs in December, November Numbers Revised Up 1,000



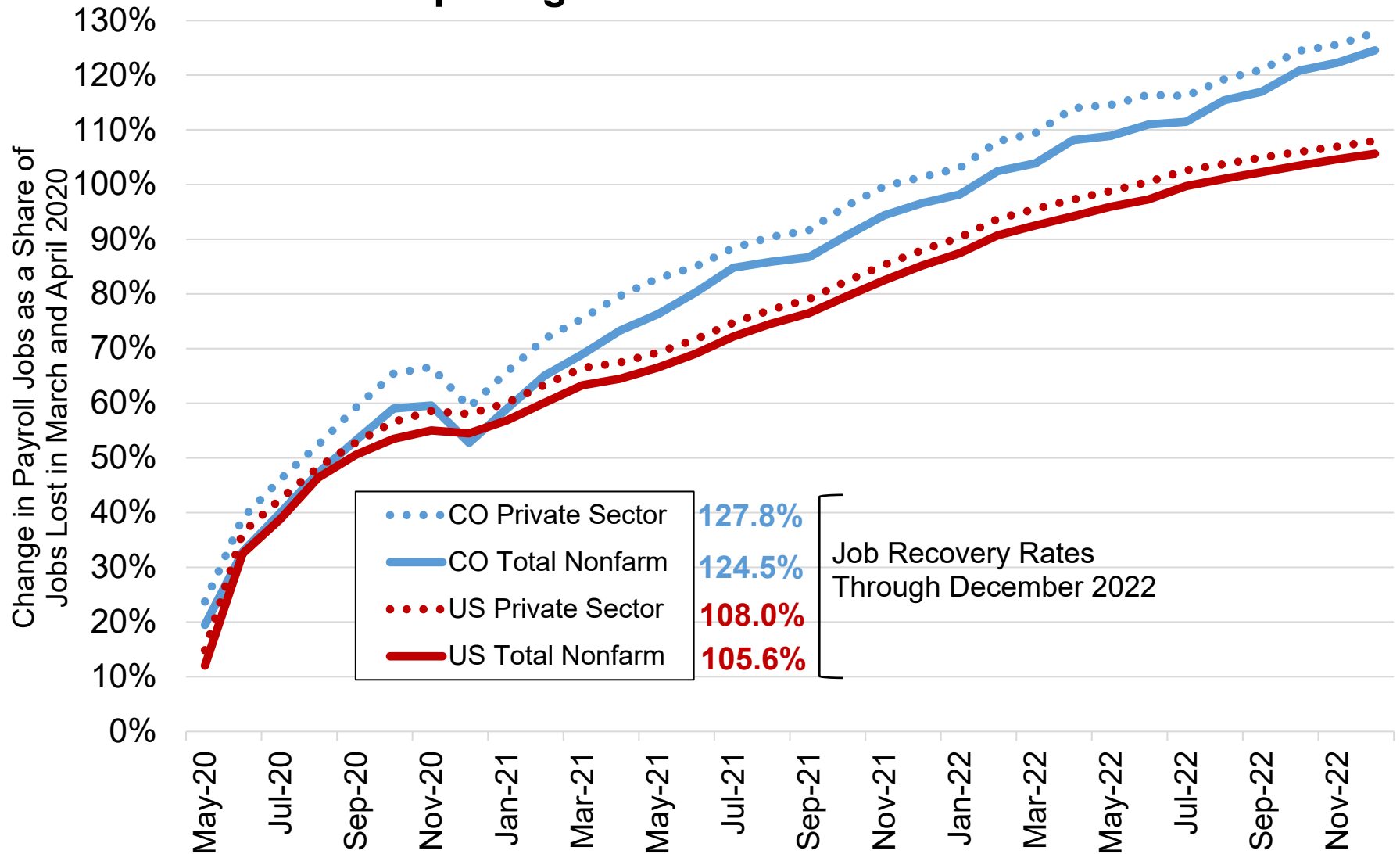
Source: Colorado Department of Labor and Employment; Bureau of Labor Statistics
Data seasonally adjusted

8,000 Private Sector Jobs Gained in December, November Numbers Revised Up 2,000



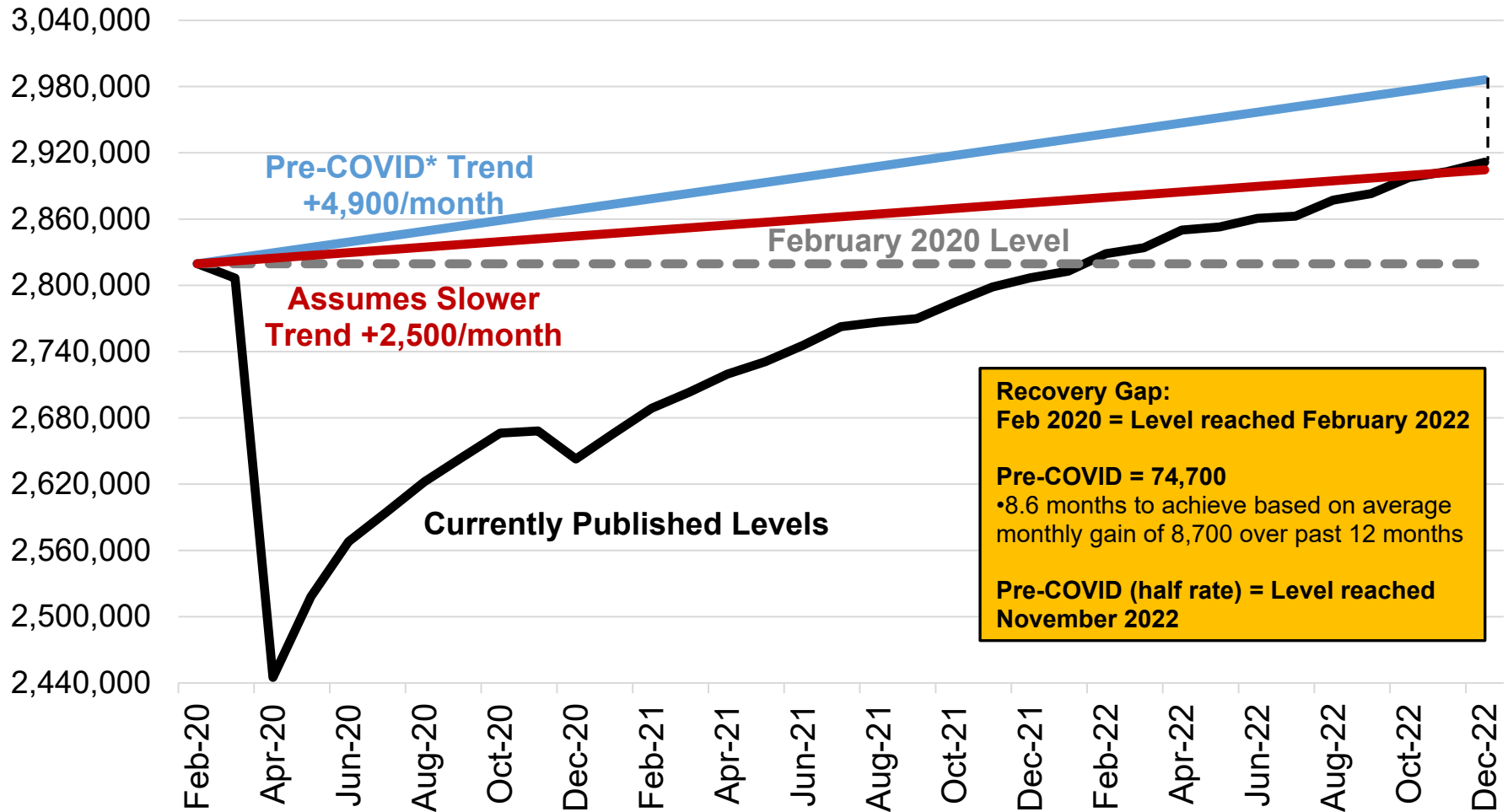
Source: Colorado Department of Labor and Employment; Bureau of Labor Statistics
Data seasonally adjusted

Colorado's Rate of Job Recovery Notably Outpacing the U.S. Since Mid-2021



Source: Colorado Department of Labor and Employment; Bureau of Labor Statistics
Data seasonally adjusted

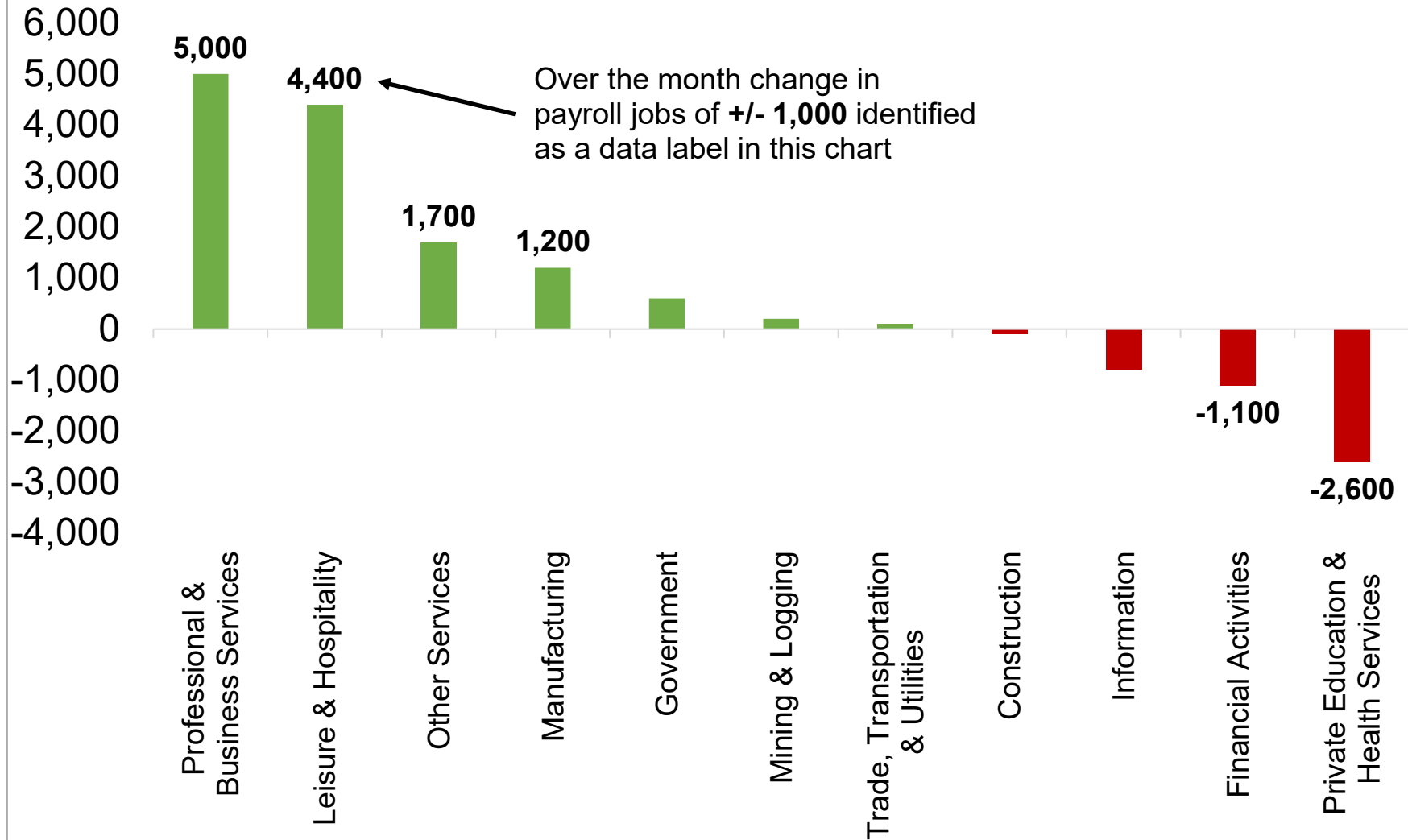
Colorado Total Nonfarm Employment and the Gap Between Different Measures of Recovery Baselines



Source: Colorado Department of Labor and Employment; Bureau of Labor Statistics
Data seasonally adjusted

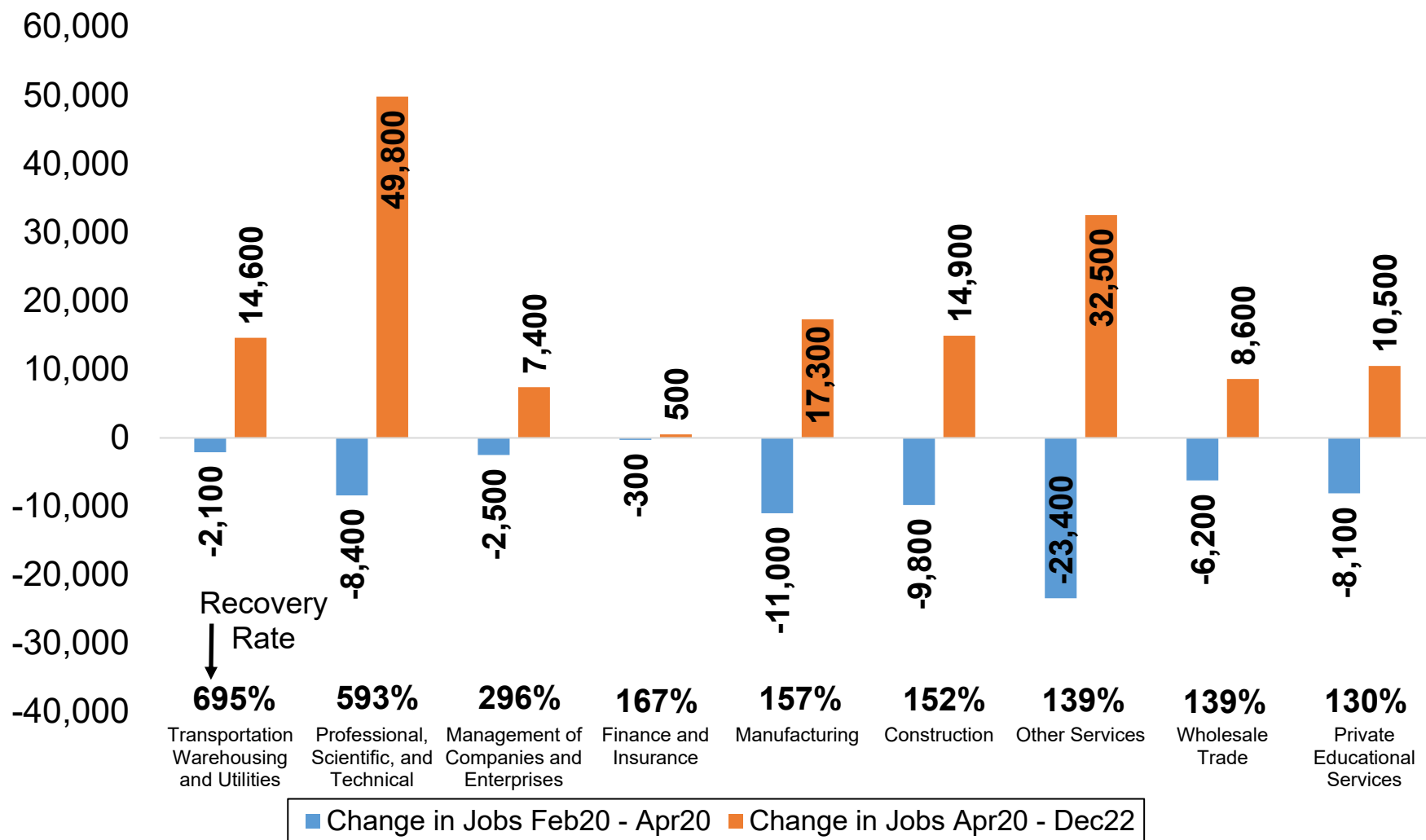
*Note: the **blue line** represents the trendline in the level of total nonfarm employment if the 2019 average monthly gain of 4,900 payroll jobs had held constant. This can be used as a baseline if no pandemic-related recession had occurred and job growth had continued at an uninterrupted pace. **Red line** assumes a slower counterfactual trendline.

Four Industries Gained at Least 1,000 Payroll Jobs in November; Two Supersectors Had Notable Declines



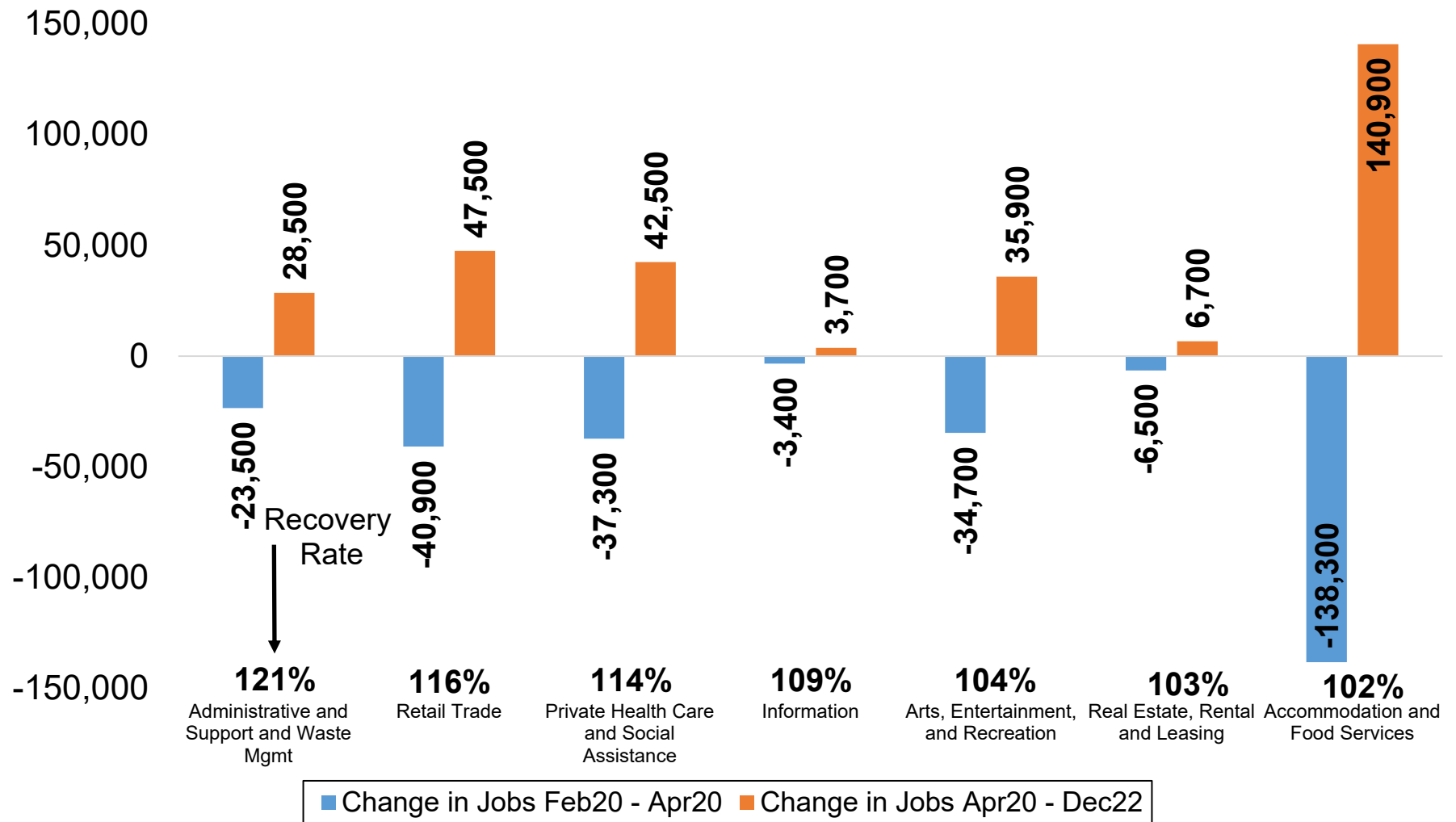
Source: Colorado Department of Labor and Employment; Bureau of Labor Statistics
Data seasonally adjusted

Colorado Industry Sectors with the Fastest Payroll Job Recovery Rates



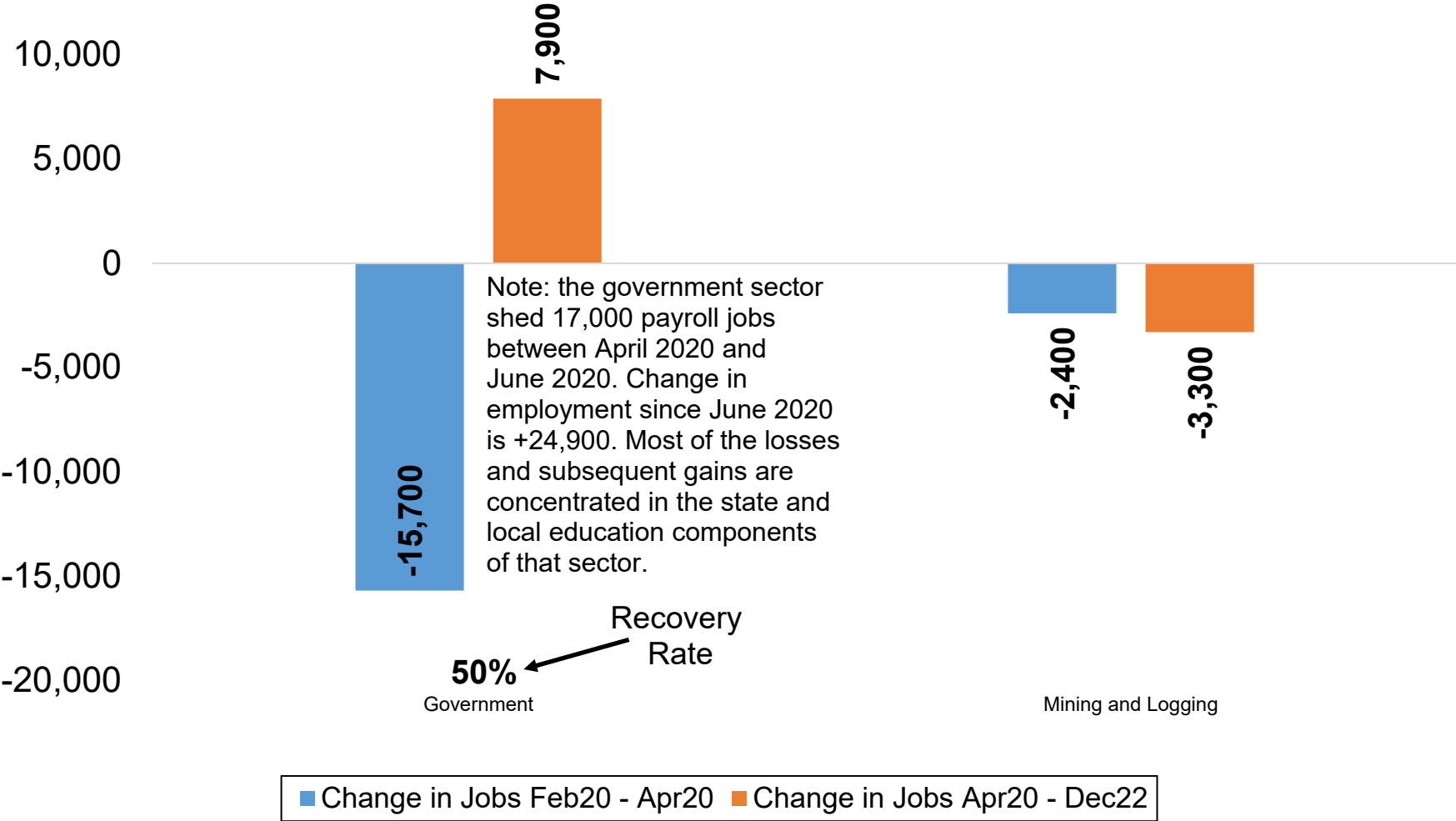
Source: Colorado Department of Labor and Employment; Bureau of Labor Statistics
Data seasonally adjusted

Colorado Industry Sectors with Payroll Job Recovery Rates Between 102 and 121 Percent



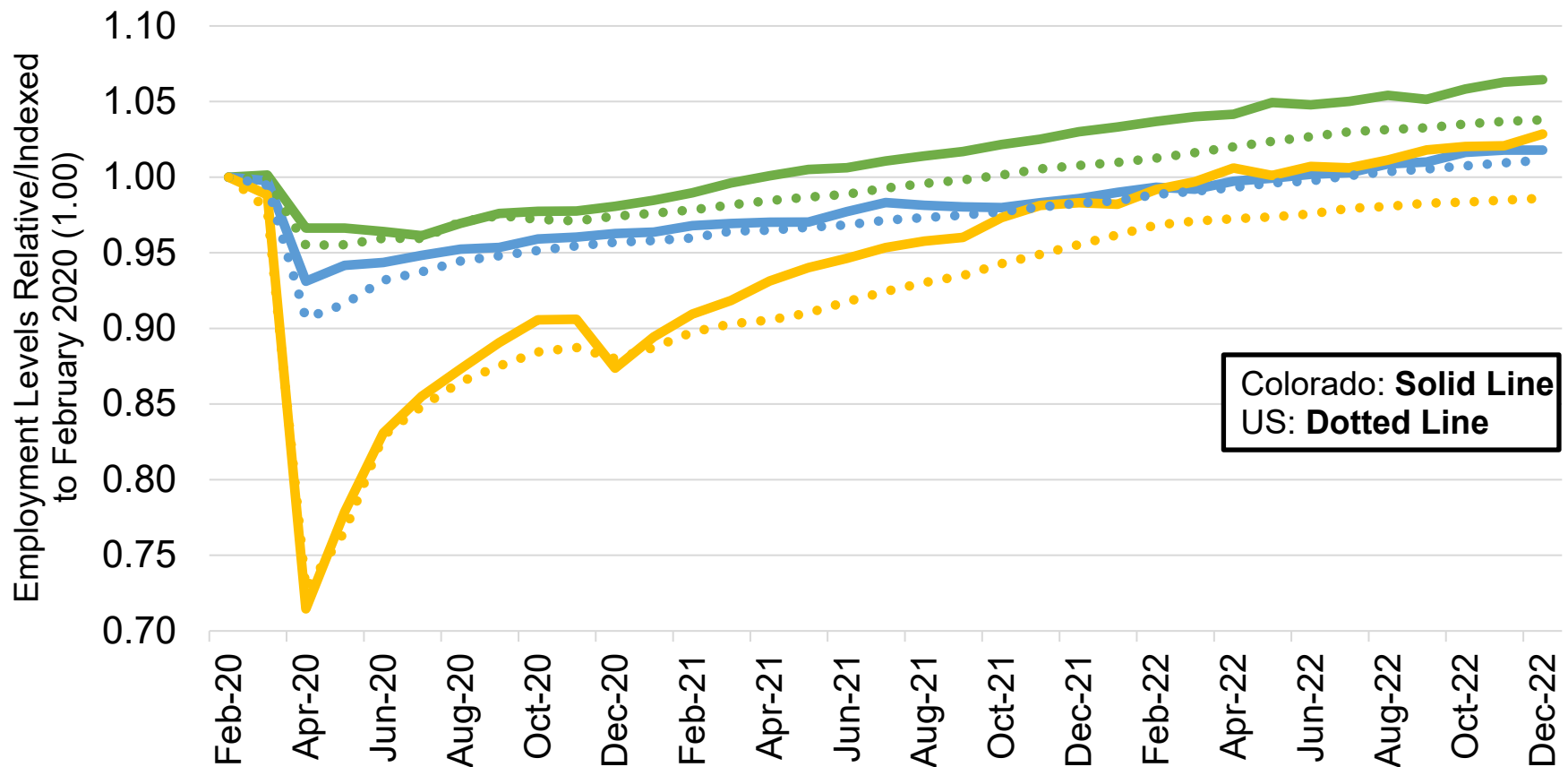
Source: Colorado Department of Labor and Employment; Bureau of Labor Statistics
Data seasonally adjusted

Colorado Industry Sectors with Low Recovery Rates or Continued Losses in Payroll Jobs Since April 2020



Source: Colorado Department of Labor and Employment; Bureau of Labor Statistics
Data seasonally adjusted

Job Loss and Recovery by Low, Medium, and High Wage Industries (Colorado & U.S.)

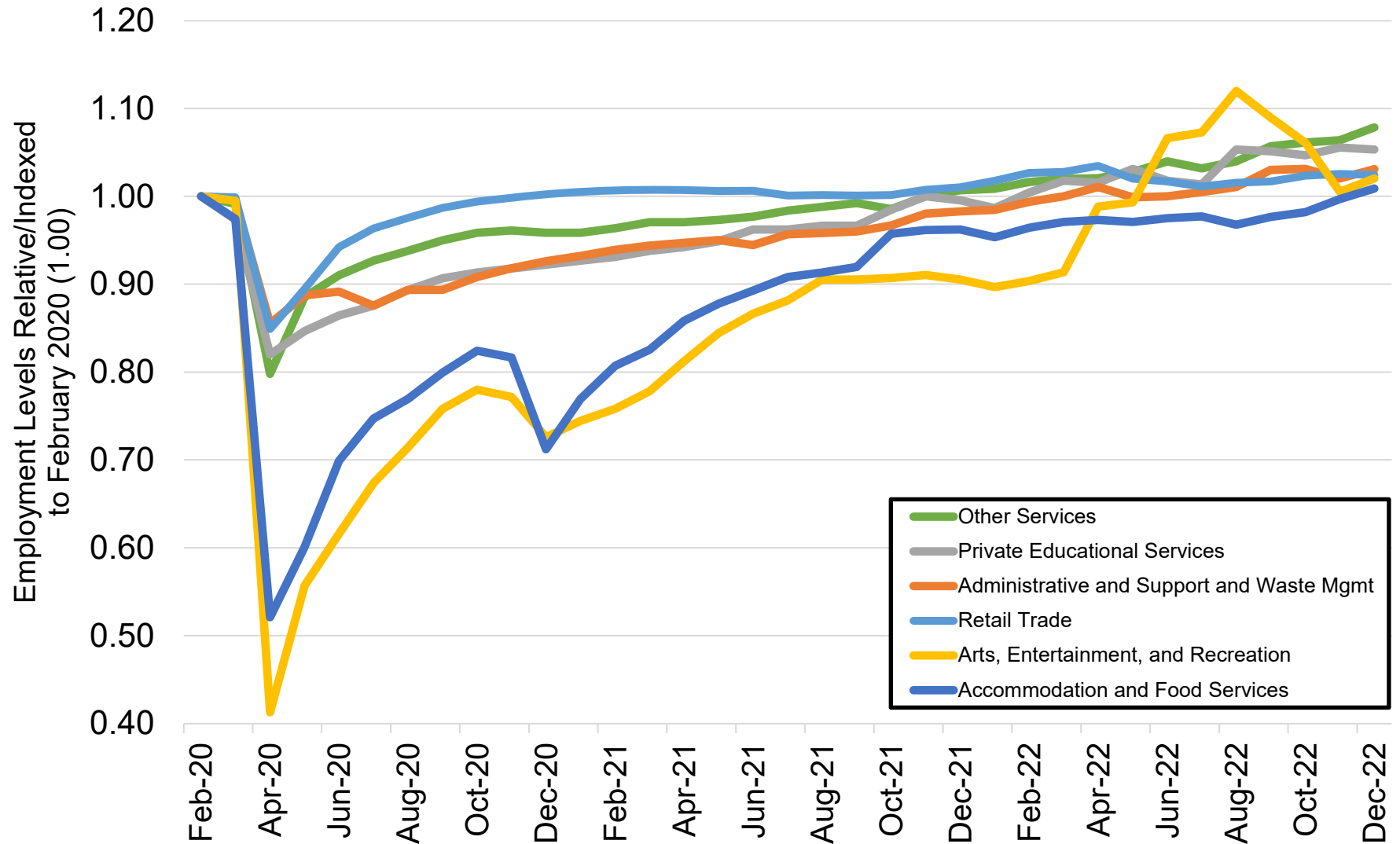


Source: Colorado Department of Labor and Employment; Bureau of Labor Statistics

Data seasonally adjusted. Note: low, medium, and high wage industries are determined by the 2019 state-level average weekly wage estimates from the Quarterly Census of Employment and Wages. **Low wage industries include:** retail trade; admin support/waste mgmt; private education services; arts, entertainment, and recreation; accommodation and food services; and other services. **Medium wage industries include:** construction; manufacturing; transportation, warehousing, and utilities; real estate, rental, and leasing; private health care and social assistance; state government; and local government.

High wage industries include: mining and logging; wholesale trade; information; finance and insurance; professional and technical services; management of companies; and federal government.

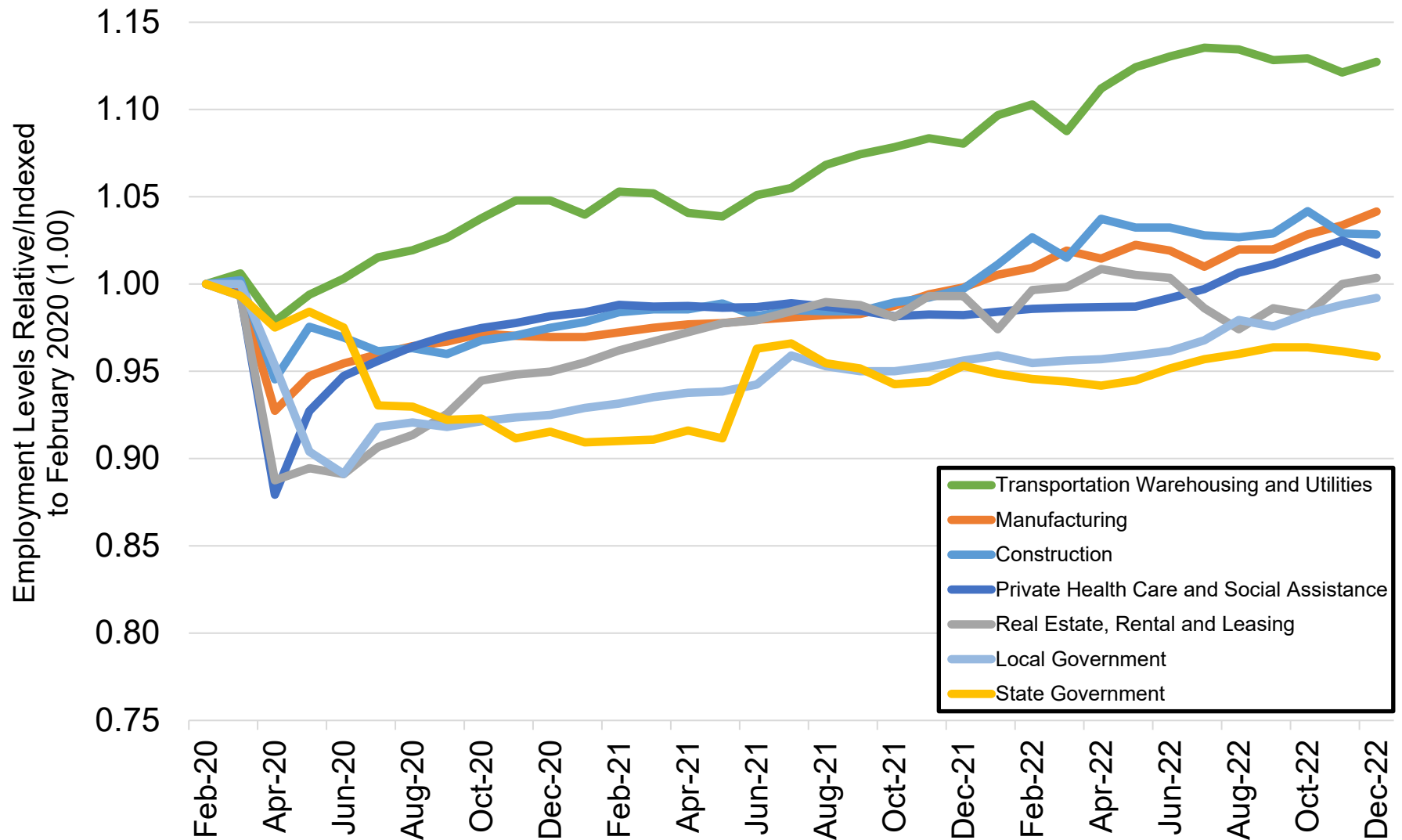
Colorado Job Loss & Recovery by Low Wage Industries



Source: Colorado Department of Labor and Employment; Bureau of Labor Statistics

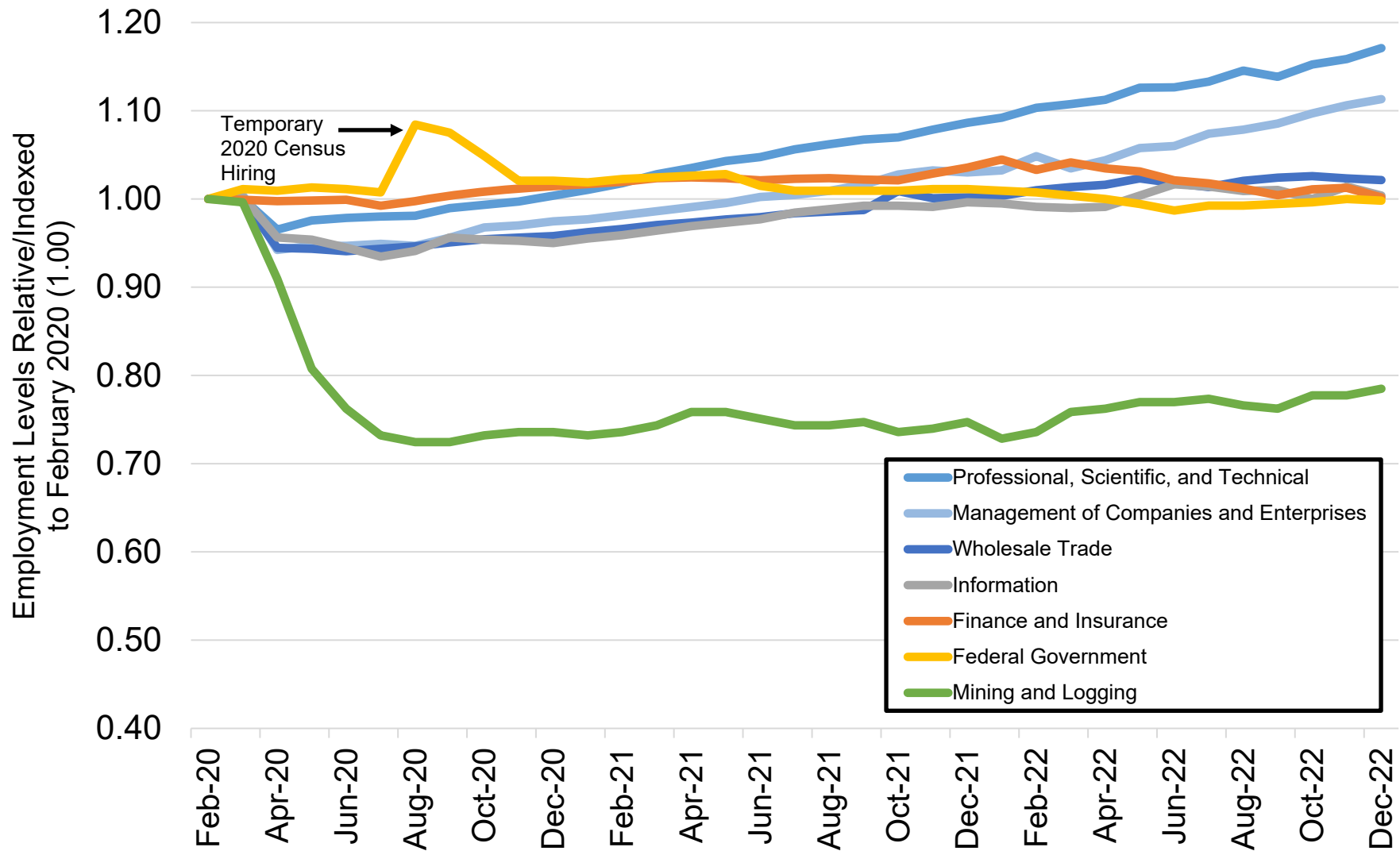
Data seasonally adjusted. Note: low wage industries are determined by the 2019 state-level average weekly wage estimates from the Quarterly Census of Employment and Wages.

Colorado Job Loss & Recovery by Medium Wage Industries



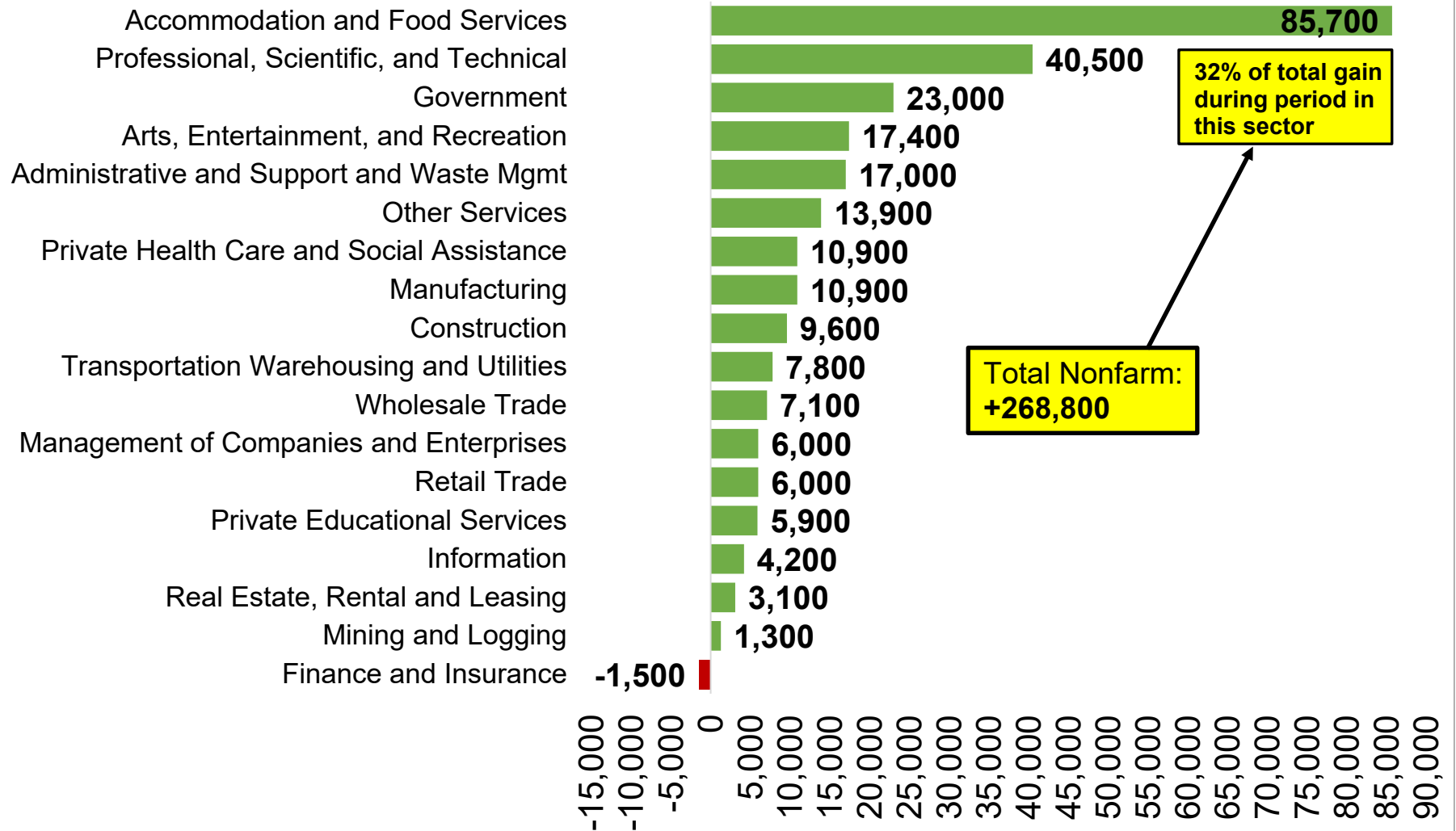
Source: Colorado Department of Labor and Employment; Bureau of Labor Statistics
 Data seasonally adjusted. Note: medium wage industries are determined by the 2019 state-level average weekly wage estimates from the Quarterly Census of Employment and Wages.

Colorado Job Loss & Recovery by High Wage Industries



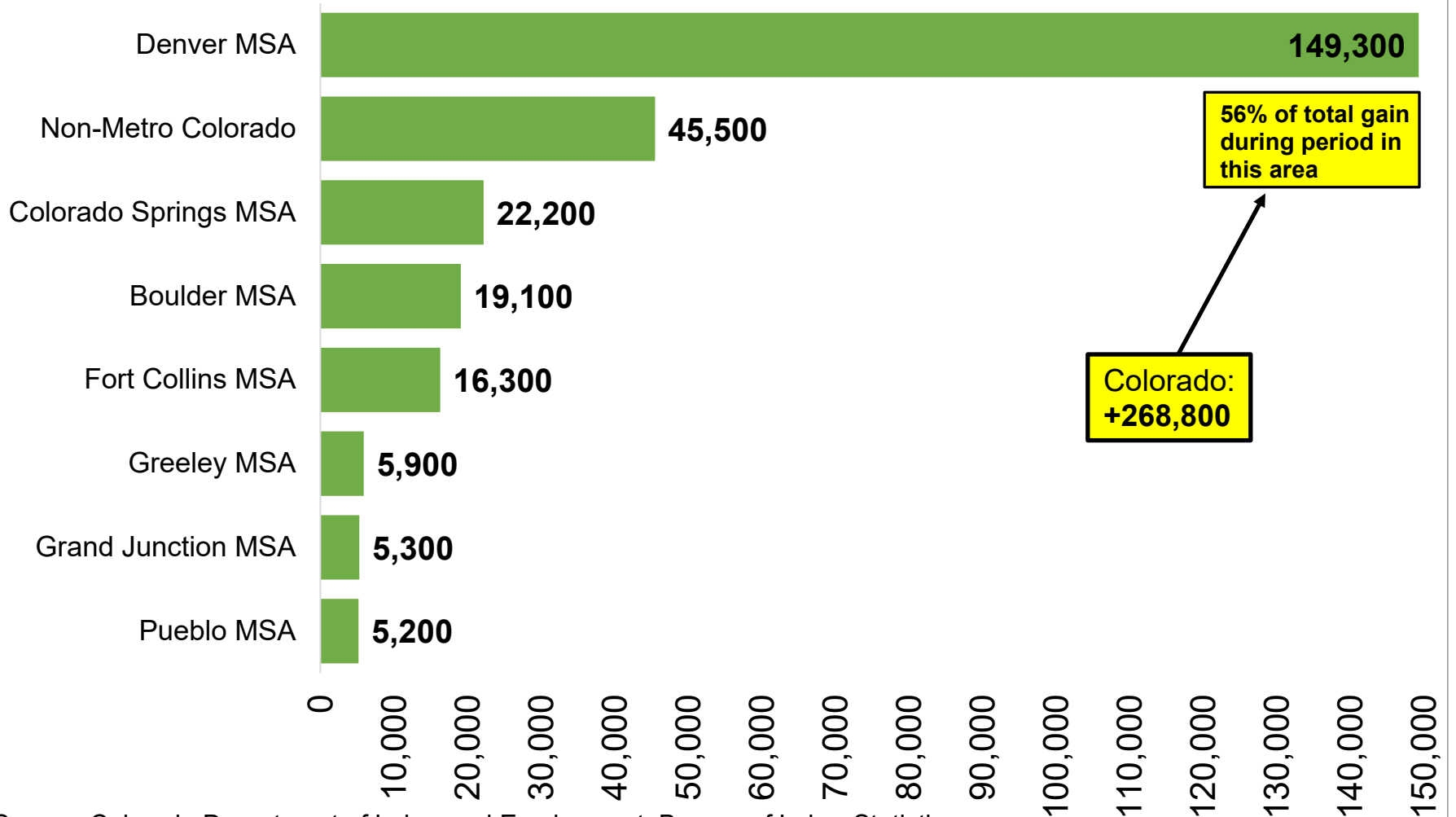
Source: Colorado Department of Labor and Employment; Bureau of Labor Statistics
 Data seasonally adjusted. Note: high wage industries are determined by the 2019 state-level average weekly wage estimates from the Quarterly Census of Employment and Wages.

Change in Payroll Jobs Since December 2020, by Industry Sector



Source: Colorado Department of Labor and Employment; Bureau of Labor Statistics
Data seasonally adjusted

Change in Payroll Jobs Since December 2020, by Colorado Substate Area

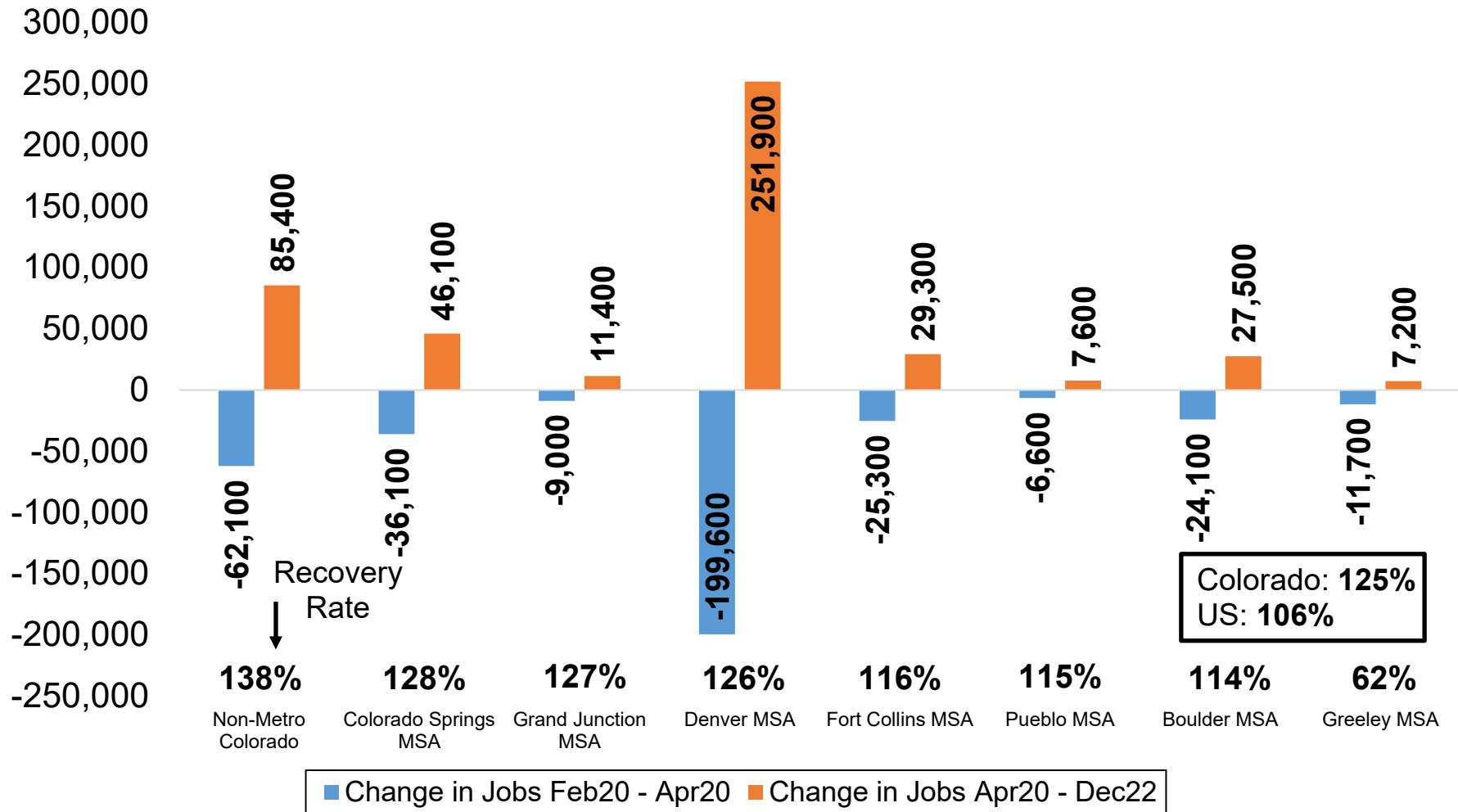


Source: Colorado Department of Labor and Employment; Bureau of Labor Statistics

Data seasonally adjusted

Note: MSA = Metropolitan Statistical Area; Non-Metro Colorado = residual of state that is not an MSA (47 counties)

Total Nonfarm Job Recovery Rates by Colorado Substate Area

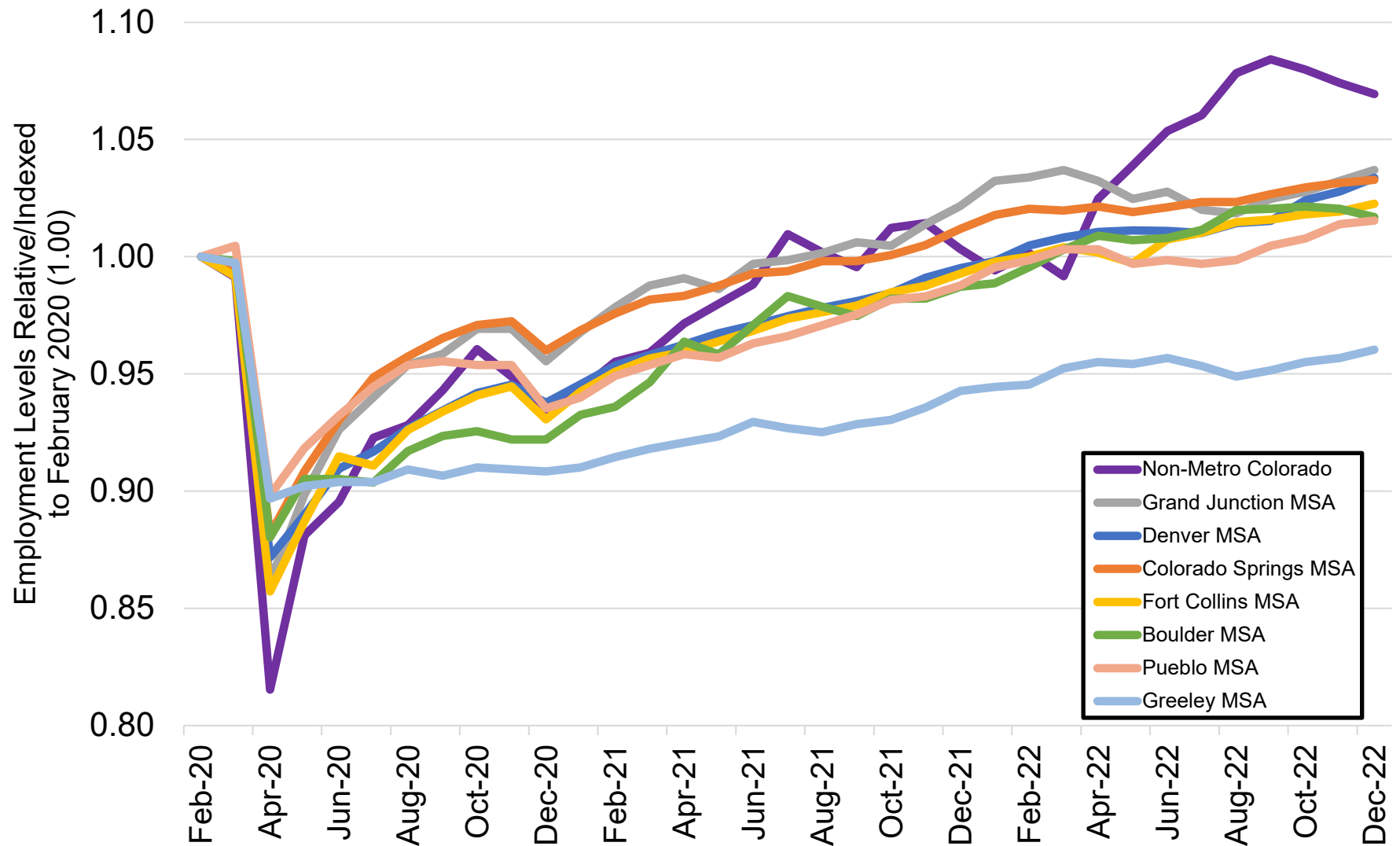


Source: Colorado Department of Labor and Employment; Bureau of Labor Statistics

Data seasonally adjusted

Note: MSA = Metropolitan Statistical Area; Non-Metro Colorado = residual of state that is not an MSA (47 total counties)

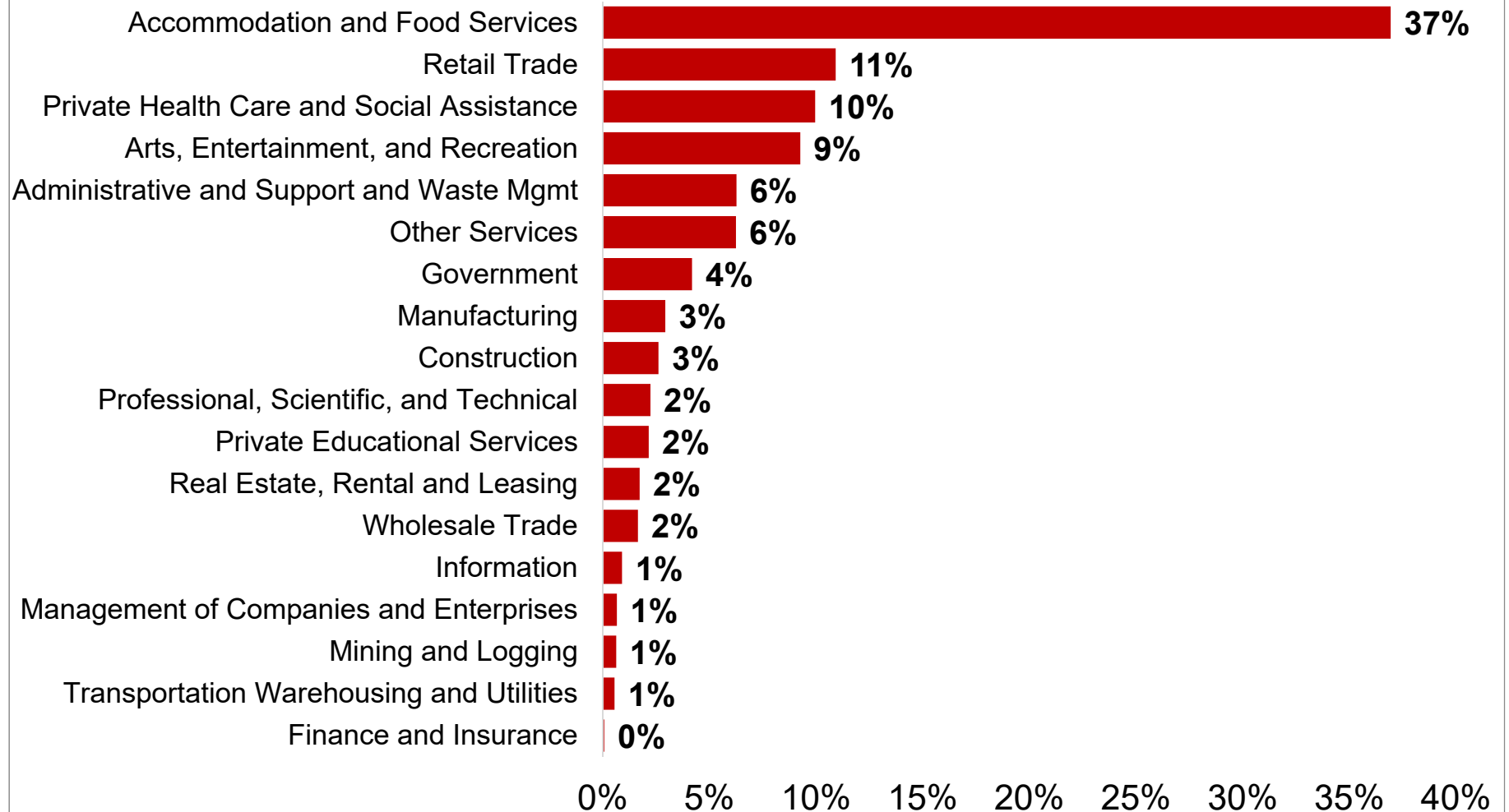
Colorado Job Loss & Recovery by Colorado Substate Area



Source: Colorado Department of Labor and Employment; Bureau of Labor Statistics

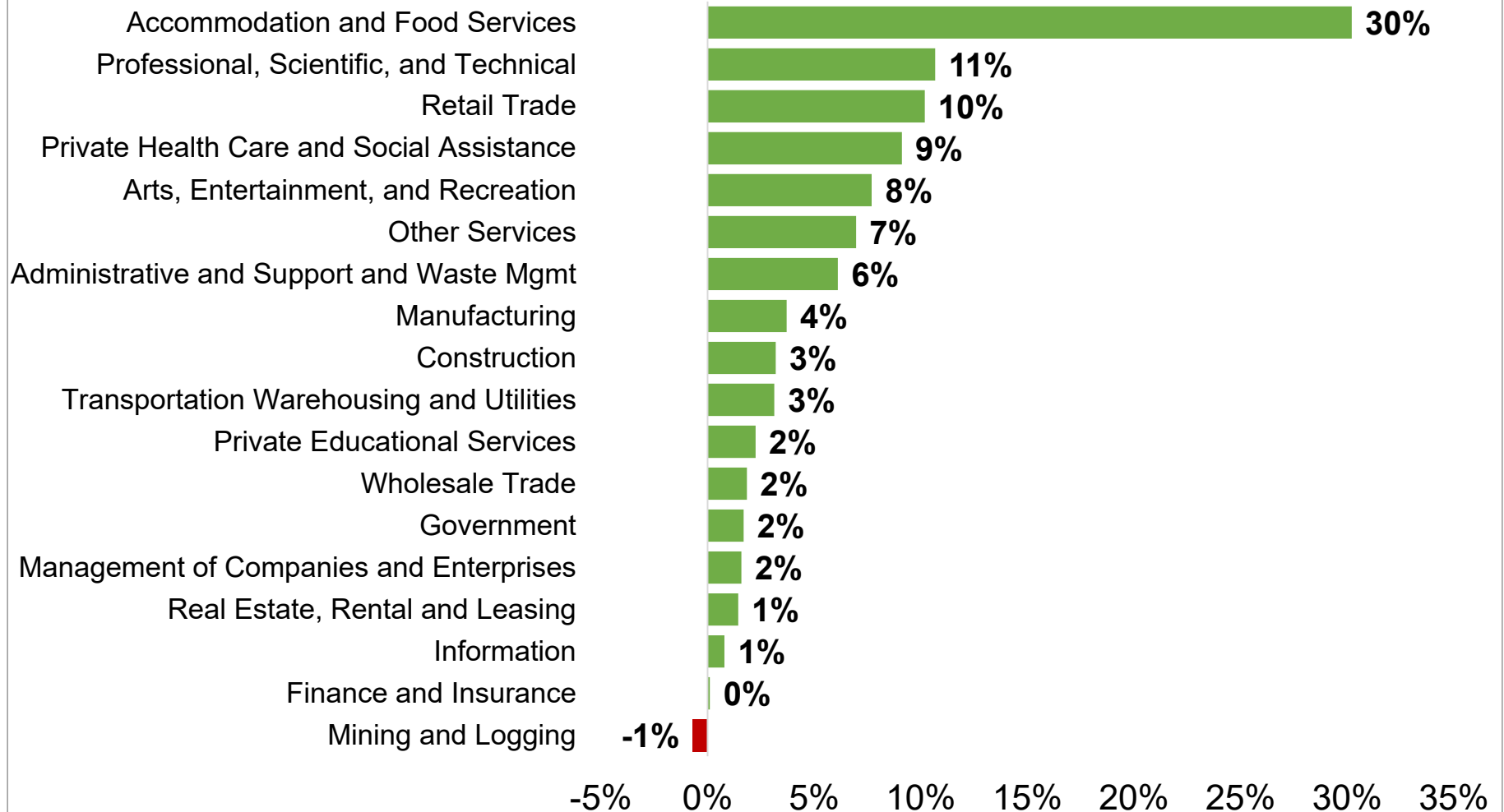
Data seasonally adjusted. Note: MSA = Metropolitan Statistical Area; Non-Metro Colorado = residual of state that is not an MSA (47 counties).

Percent Contribution to Total Colorado Nonfarm Payroll Jobs Lost March & April 2020, by Industry Sector



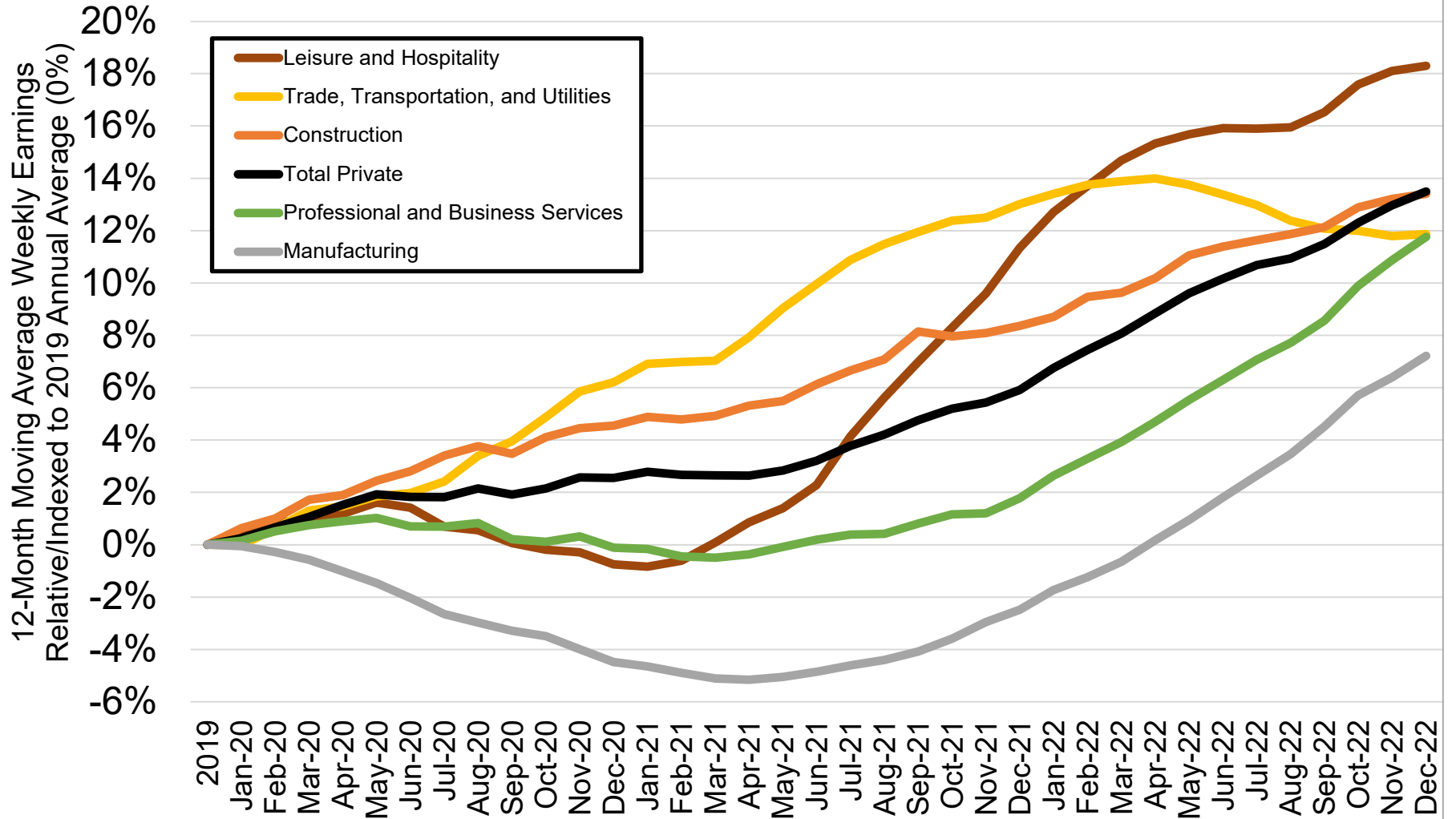
Source: Colorado Department of Labor and Employment; Bureau of Labor Statistics
Data seasonally adjusted

Percent Contribution to Total Colorado Nonfarm Payroll Jobs Added Since April 2020, by Industry Sector



Source: Colorado Department of Labor and Employment; Bureau of Labor Statistics
Data seasonally adjusted

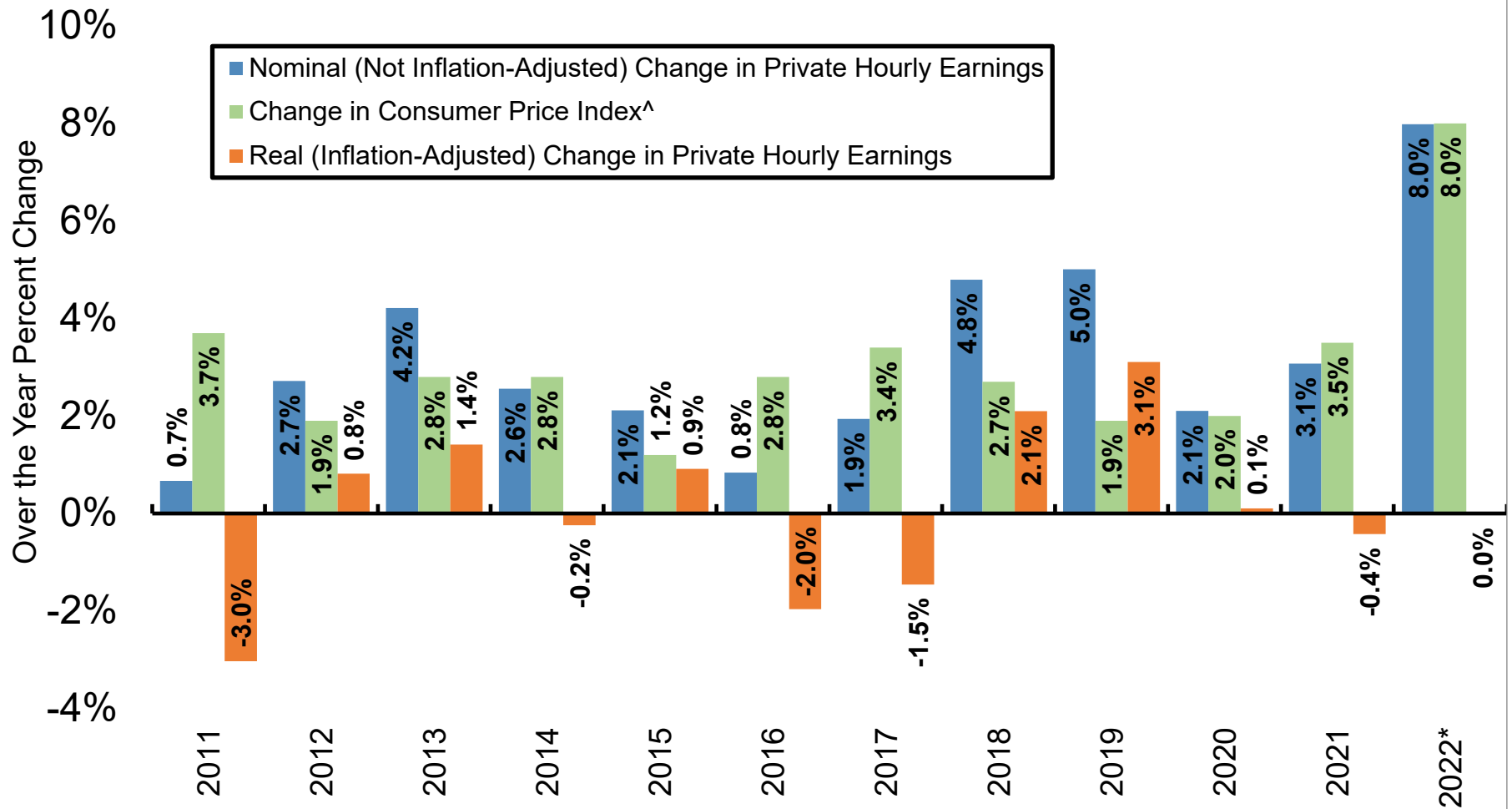
Percent Change in Average Weekly Earnings Since 2019, by Select Colorado Industry



Source: Colorado Department of Labor and Employment; Bureau of Labor Statistics

Data not seasonally adjusted. Note: each month on this chart represents a 12-month moving average and measures the percent change in average weekly earnings compared to the 2019 annual average for that industry.

Nominal and Real Percent Change in Colorado's Private Average Hourly Earnings Since 2011

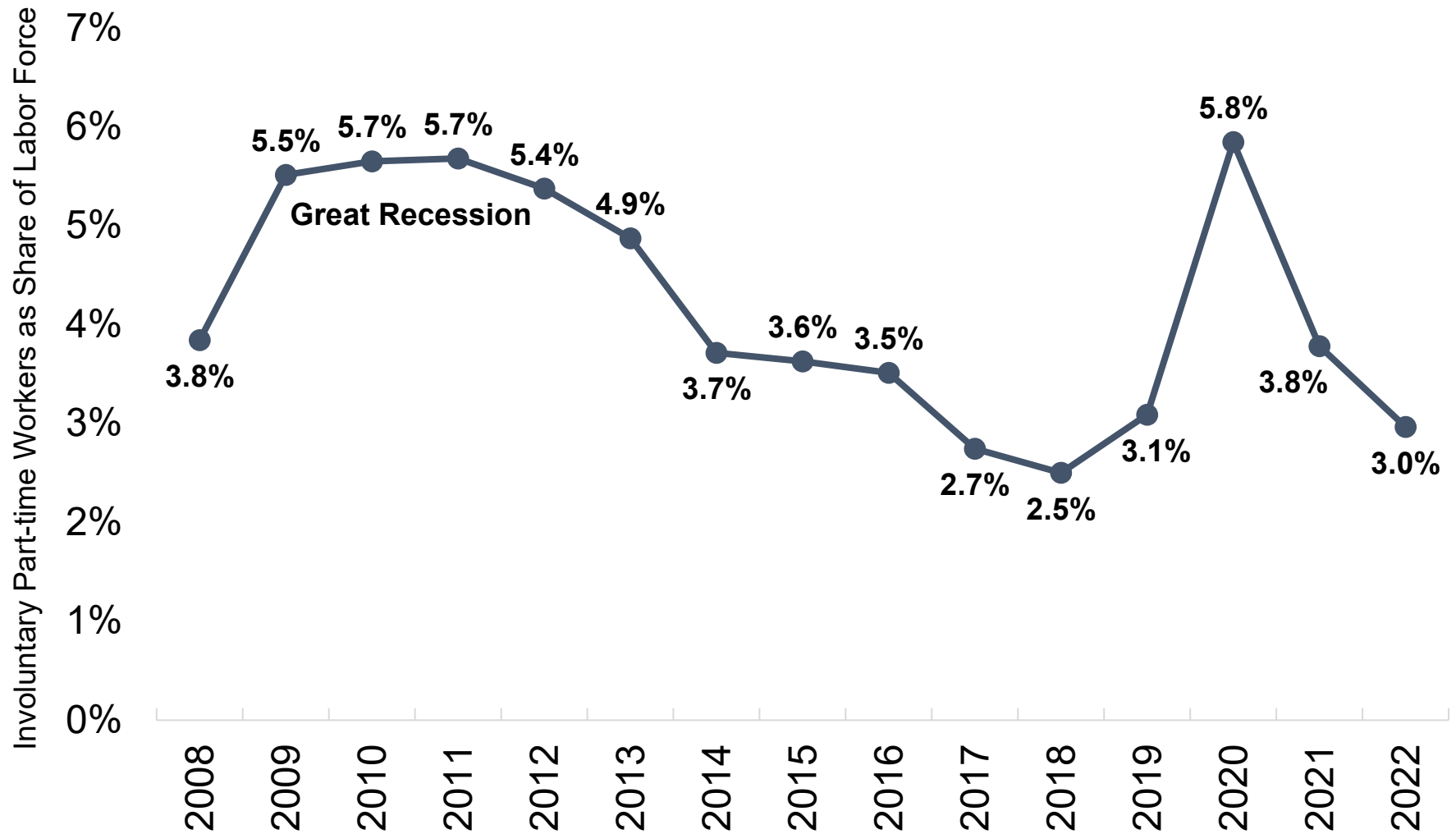


Source: Colorado Department of Labor and Employment estimates; Bureau of Labor Statistics

[^]Note: Denver-Aurora-Lakewood CPI-U estimates were utilized to adjust average hourly earnings for inflation.

That data is available here: <https://www.bls.gov/cpi/regional-resources.htm>. *2022 nominal earnings growth is measured using data for January to December compared to the same period the year prior, while real earnings were adjusted using the over-the-year change in CPI-U for 2022.

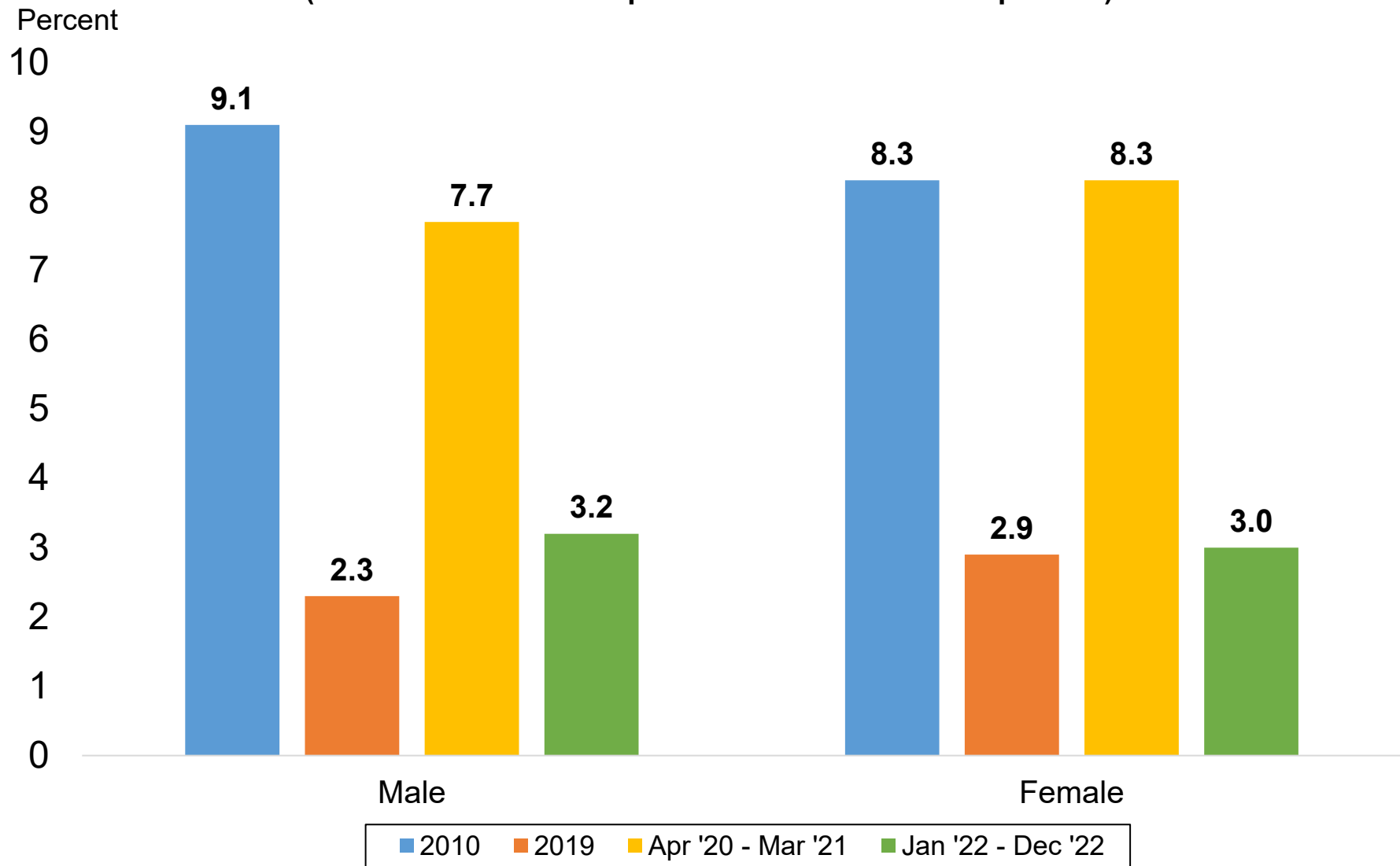
Involuntary Part-Time Workers as Share of Labor Force



Source: Current Population Survey

Data not seasonally adjusted. Involuntary part-time workers are those individuals who are working part-time hours (34 hours or less), but prefer full-time hours (35+ hours).

Unemployment Rates by Gender (Most recent 12-month period available vs. select periods)

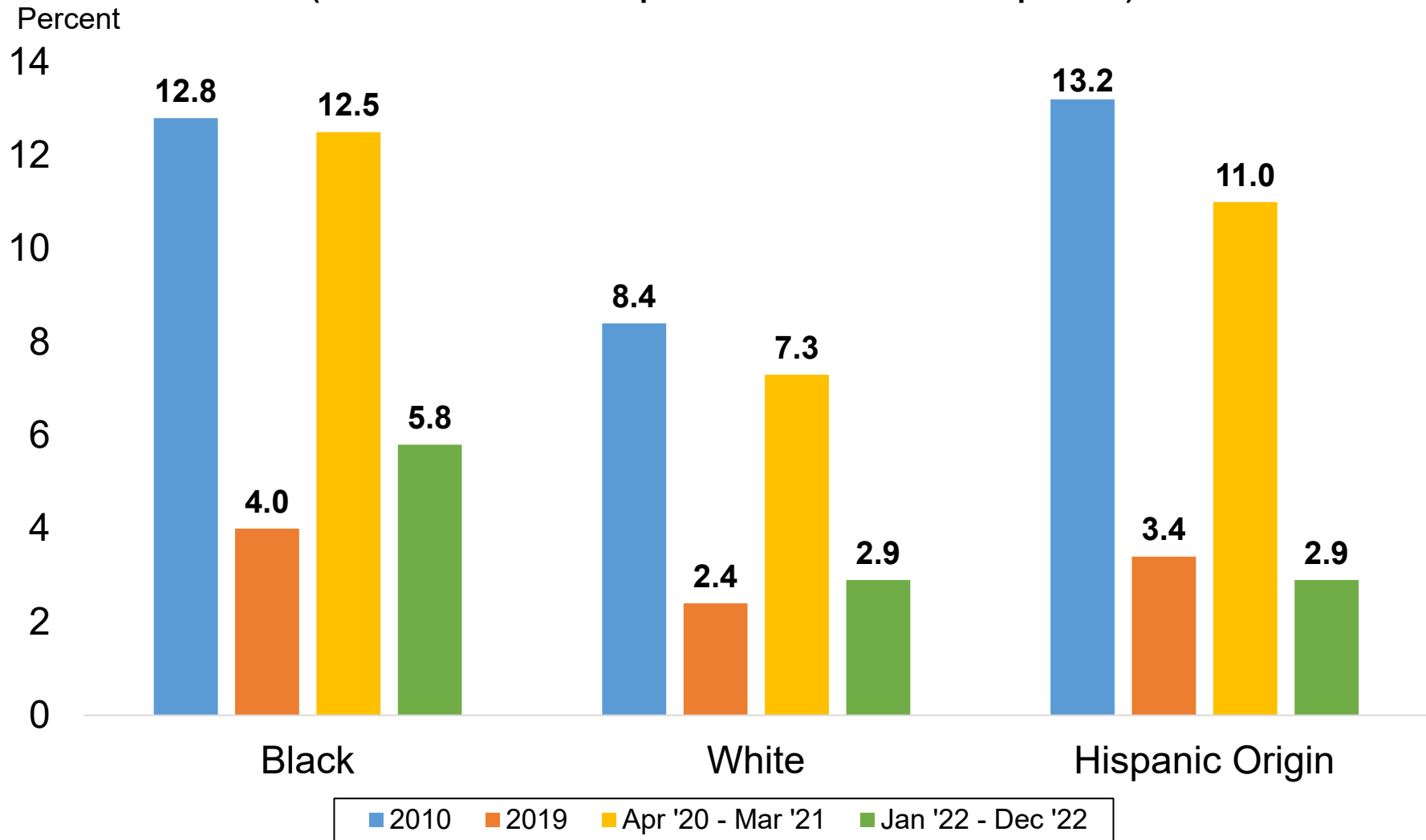


Source: Current Population Survey

Data not seasonally adjusted. Unemployment rates by gender for individuals 16 years and older.

Unemployment Rates by Race & Ethnicity

(Most recent 12-month period available vs. select periods)

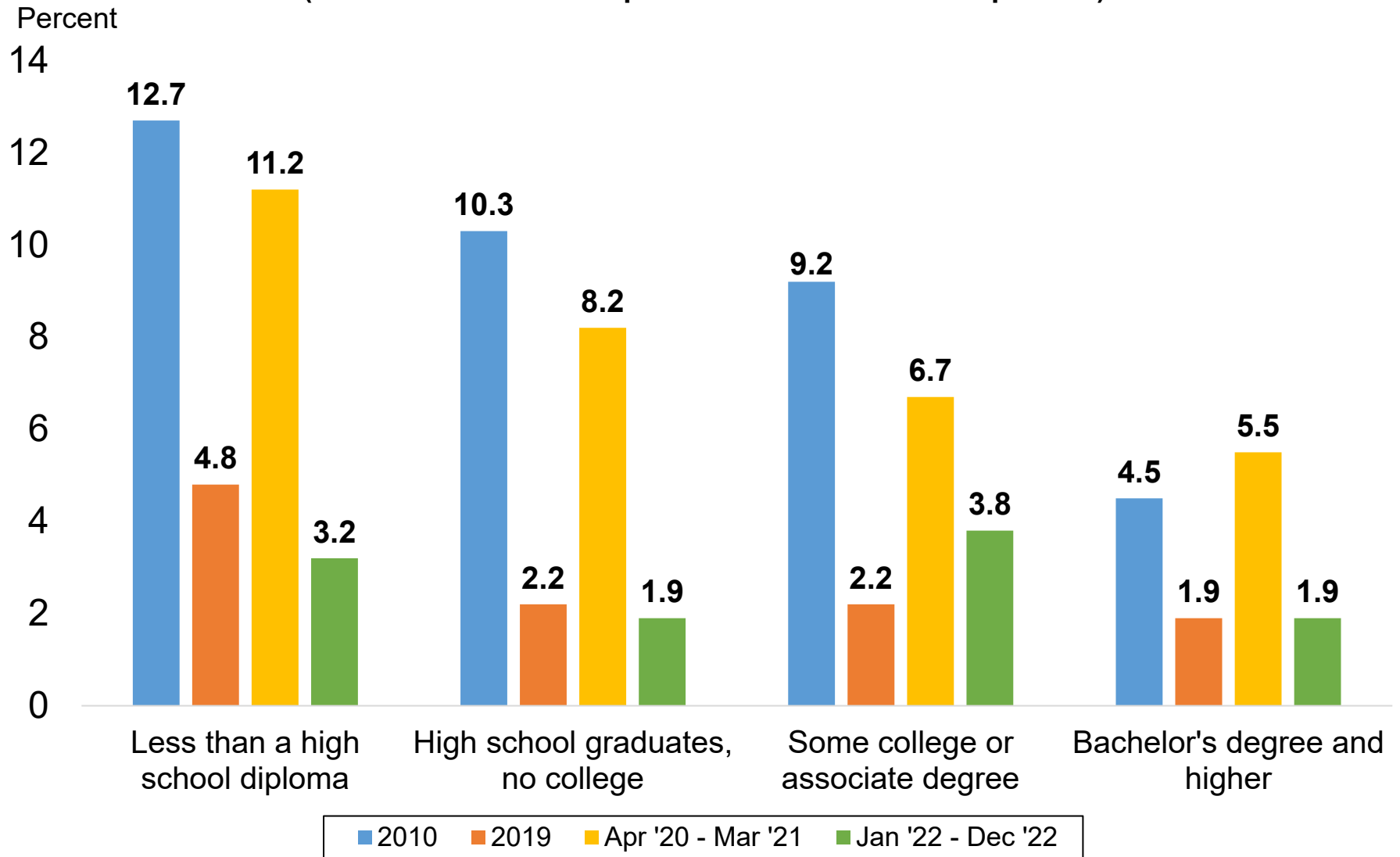


Source: Current Population Survey

Data not seasonally adjusted. Other race categories excluded due to small sample size. Hispanic origin category is not mutually exclusive (i.e. hispanic and non-hispanic ethnicities are represented in both race categories).

Unemployment Rates by Educational Attainment

(Most recent 12-month period available vs. select periods)

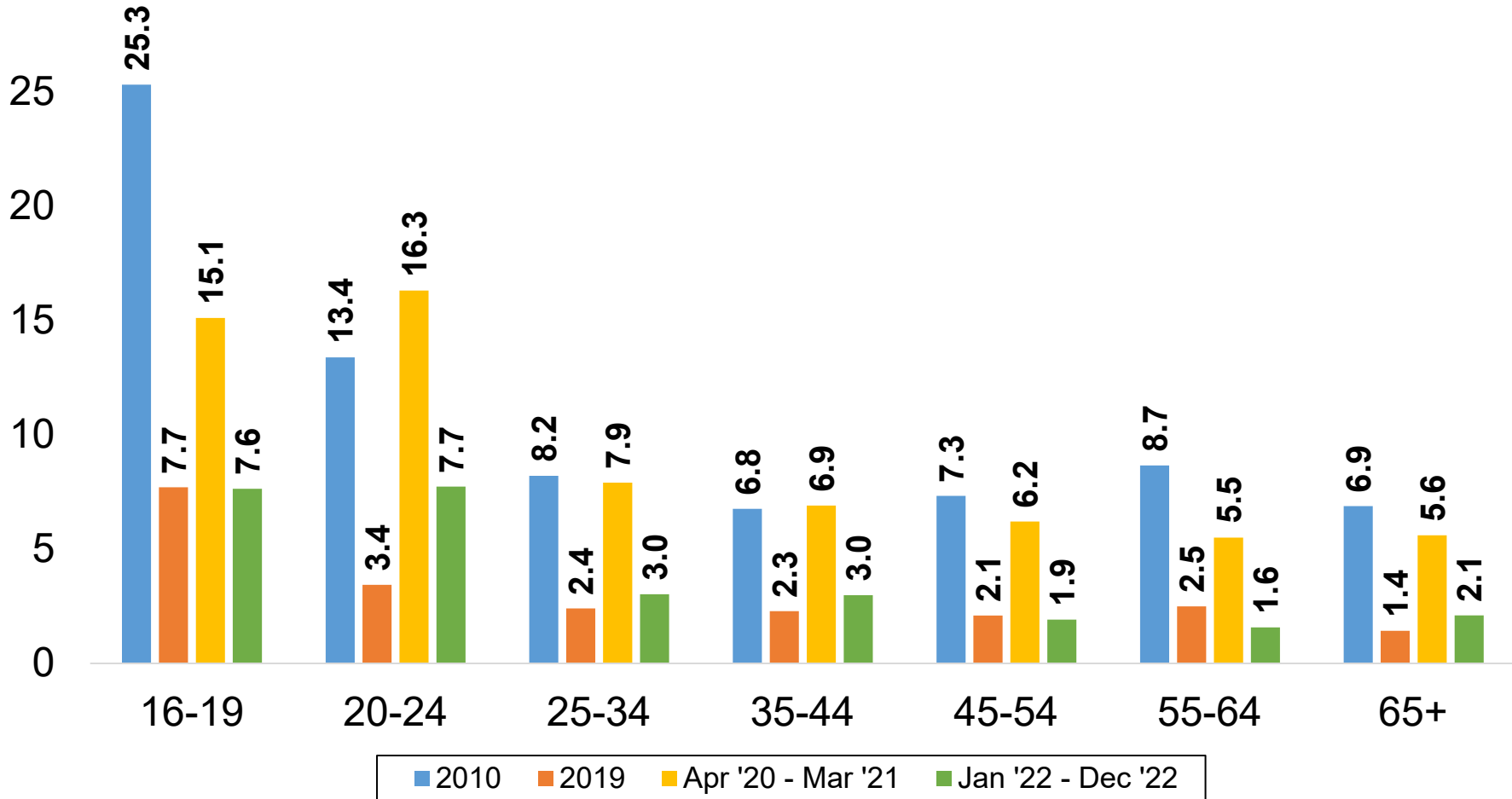


Source: Current Population Survey

Data not seasonally adjusted. Unemployment rates by educational attainment for individuals 25 years and over.

Unemployment Rates by Age Group (Most recent 12-month period available vs. select periods)

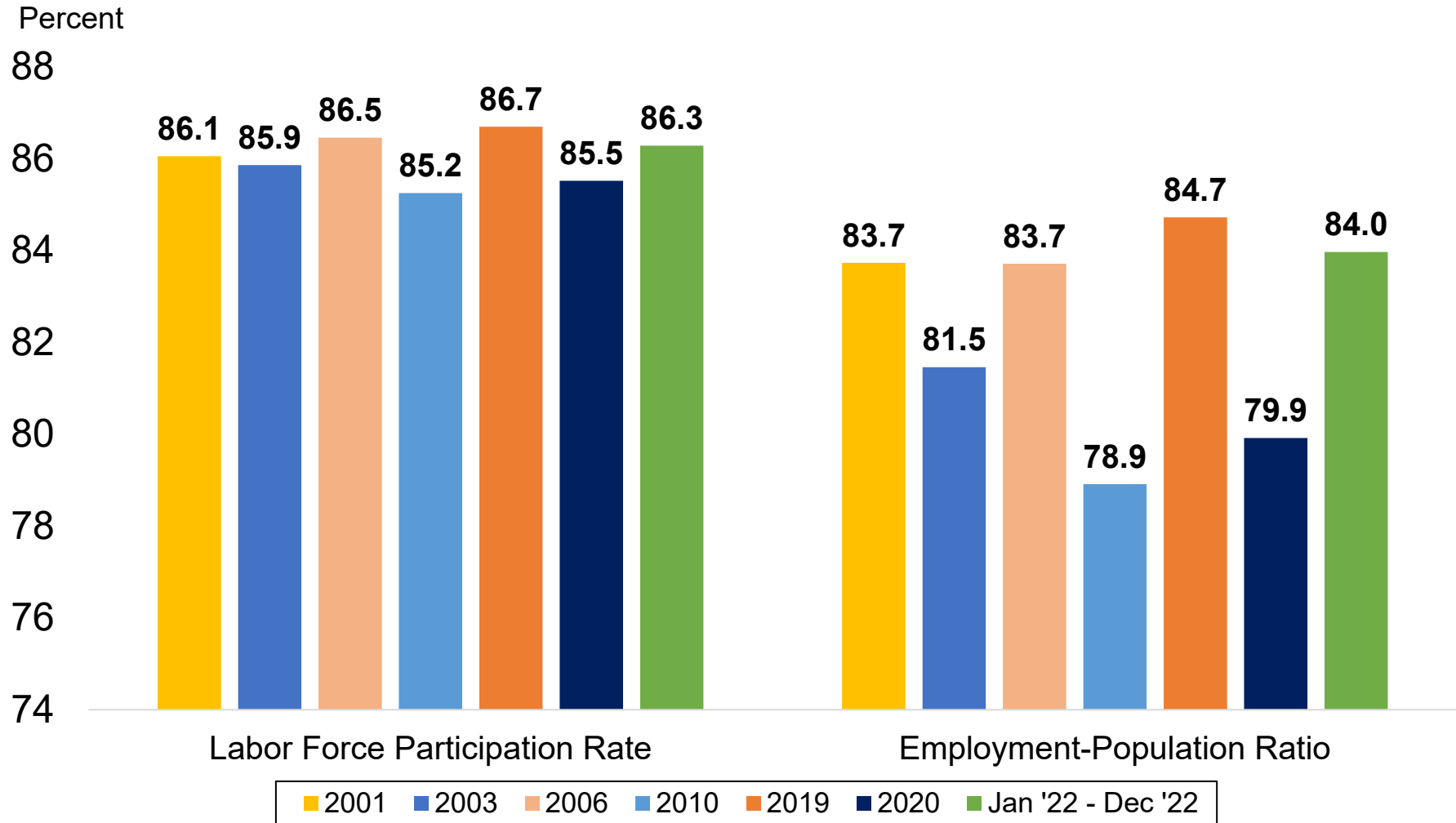
Percent
30



Source: Current Population Survey
Data not seasonally adjusted.

Colorado Labor Force Participation Rates and Employment-to-Population Ratios, Ages 25 to 54

(Most recent 12-month period available vs. select years)



Source: Current Population Survey
Data not seasonally adjusted.

LABOR FORCE SUMMARY
COLORADO

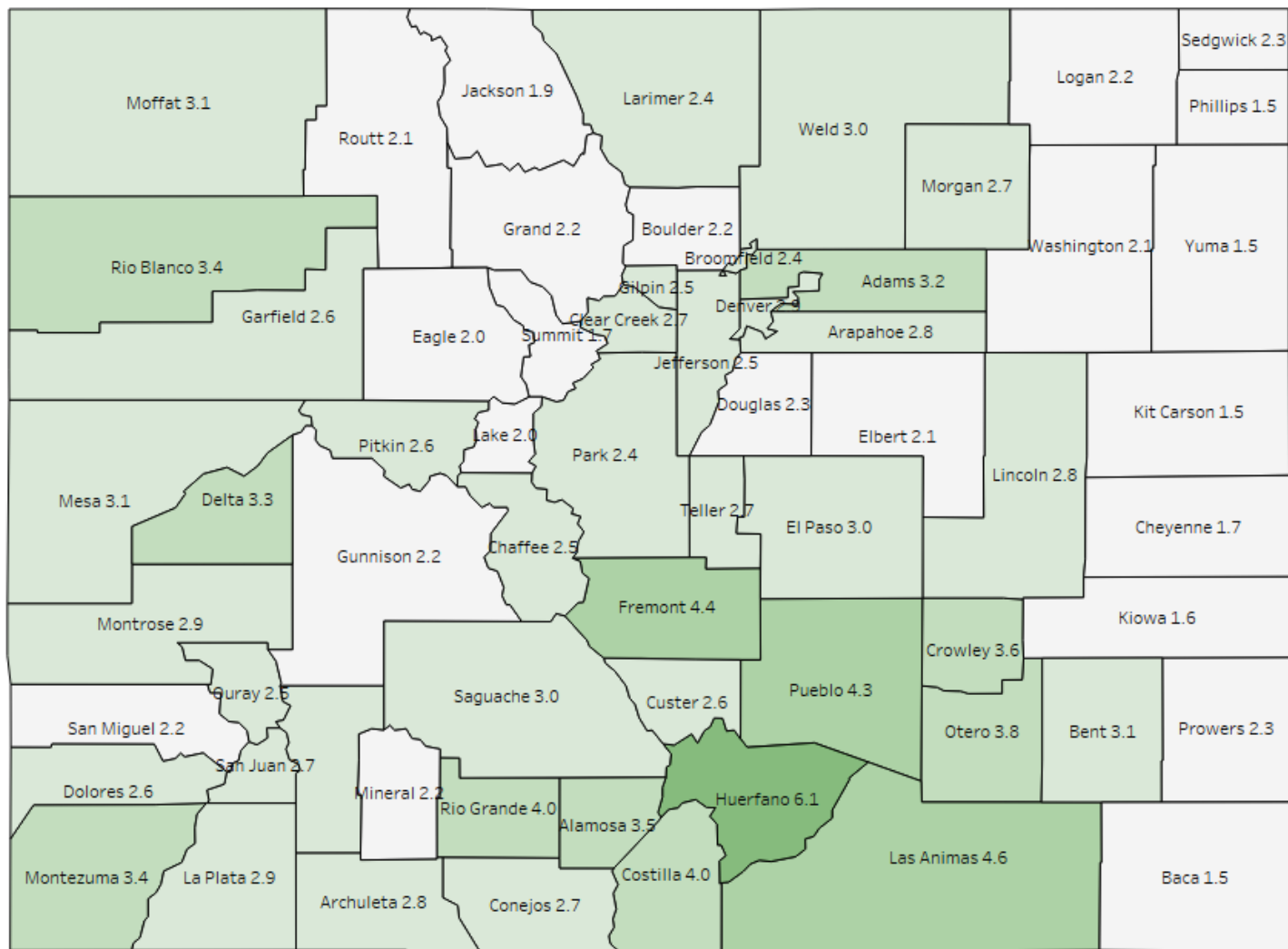
Preliminary Estimates for December 2022

LABOR FORCE DATA (VALUES IN THOUSANDS)					
SEASONALLY ADJUSTED:				Change from last:	
	Dec-22	Nov-22	Dec-21	Month	Year
Total Civilian Labor Force	3,244.7	3,251.9	3,170.7	-7.2	74.0
Unemployment	106.7	113.4	133.0	-6.7	-26.3
Unemployment Rate (%)	3.3	3.5	4.2	-0.2	-0.9
Employment	3,138.0	3,138.4	3,037.7	-0.5	100.3
UNADJUSTED FOR SEASONALITY:				Change from last:	
	Dec-22	Nov-22	Dec-21	Month	Year
Total Civilian Labor Force	3,230.0	3,257.0	3,184.4	-27.0	45.6
Unemployment	89.5	107.7	114.6	-18.2	-25.1
Unemployment Rate (%)	2.8	3.3	3.6	-0.5	-0.8
Employment	3,140.5	3,149.3	3,069.8	-8.9	70.7

WAGE AND SALARY EMPLOYMENT DATA (VALUES IN THOUSANDS)					
SEASONALLY ADJUSTED:				Change from last:	
	Dec-22	Nov-22	Dec-21	Month	Year
Mining & Logging	20.8	20.6	19.8	0.2	1.0
Construction	184.5	184.6	178.9	-0.1	5.6
Manufacturing	157.8	156.6	151.2	1.2	6.6
Trade, Transportation, & Utilities	502.4	502.3	491.8	0.1	10.6
Information	78.3	79.1	77.7	-0.8	0.6
Financial Activities	176.6	177.7	180.0	-1.1	-3.4
Professional & Business Services	499.0	494.0	467.1	5.0	31.9
Educational & Health Services	361.7	364.3	348.4	-2.6	13.3
Leisure & Hospitality	351.6	347.2	331.3	4.4	20.3
Other Services	125.0	123.3	116.7	1.7	8.3
Government	453.8	453.2	443.9	0.6	9.9
TOTAL NONAG	2,911.5	2,902.9	2,806.8	8.6	104.7
Labor Disputants	0.0	0.0	0.0	0.0	0.0
UNADJUSTED FOR SEASONALITY:				Change from last:	
	Dec-22	Nov-22	Dec-21	Month	Year
Mining & Logging	21.0	20.8	19.9	0.2	1.1
Construction	181.5	184.6	176.6	-3.1	4.9
Manufacturing	157.8	156.7	151.2	1.1	6.6
Trade, Transportation, & Utilities	516.0	508.0	507.1	8.0	8.9
Information	78.5	79.3	77.9	-0.8	0.6
Financial Activities	177.4	177.8	180.7	-0.4	-3.3
Professional & Business Services	498.2	493.3	465.6	4.9	32.6
Educational & Health Services	362.2	365.5	348.7	-3.3	13.5
Leisure & Hospitality	350.1	334.1	329.2	16.0	20.9
Other Services	124.3	122.5	115.5	1.8	8.8
Government	456.9	460.9	446.5	-4.0	10.4
TOTAL NONAG	2,923.9	2,903.5	2,818.9	20.4	105.0
Labor Disputants	0.0	0.0	0.0	0.0	0.0

Source: Colorado Department of Labor & Employment; Bureau of Labor Statistics

County Unemployment Rates December 2022



Not Seasonally Adjusted Labor Force

	December 2022				November 2022			
	Labor Force	Employment	Unemployment	Rate	Labor force	Employment	Unemployment	Rate
Colorado	3,229,977	3,140,451	89,526	2.8	3,257,021	3,149,326	107,695	3.3
Metropolitan Statistical Area								
Boulder	201,887	197,458	4,429	2.2	206,170	200,727	5,443	2.6
Colorado Springs	367,853	356,889	10,964	3.0	375,298	361,927	13,371	3.6
Denver-Aurora-Lakewood	1,735,541	1,687,640	47,901	2.8	1,756,069	1,698,658	57,411	3.3
Fort Collins	212,087	207,057	5,030	2.4	214,298	208,245	6,053	2.8
Grand Junction	78,036	75,581	2,455	3.1	79,018	76,182	2,836	3.6
Greeley	168,716	163,640	5,076	3.0	169,712	163,785	5,927	3.5
Pueblo	78,452	75,099	3,353	4.3	79,694	75,639	4,055	5.1
Counties								
Adams	283,922	274,863	9,059	3.2	287,084	276,256	10,828	3.8
Alamosa	8,301	8,014	287	3.5	8,531	8,187	344	4.0
Arapahoe	377,449	366,823	10,626	2.8	382,419	369,488	12,931	3.4
Archuleta	6,958	6,765	193	2.8	7,116	6,900	216	3.0
Baca	2,121	2,090	31	1.5	1,993	1,959	34	1.7
Bent	1,972	1,910	62	3.1	1,867	1,795	72	3.9
Boulder	201,887	197,458	4,429	2.2	206,170	200,727	5,443	2.6
Broomfield	42,706	41,695	1,011	2.4	43,229	42,000	1,229	2.8
Chaffee	10,216	9,962	254	2.5	10,302	10,032	270	2.6
Cheyenne	1,149	1,129	20	1.7	1,049	1,029	20	1.9
Clear Creek	6,199	6,033	166	2.7	6,258	6,067	191	3.1
Conejos	4,040	3,929	111	2.7	4,039	3,909	130	3.2
Costilla	1,900	1,824	76	4.0	1,856	1,773	83	4.5
Crowley	1,377	1,328	49	3.6	1,411	1,350	61	4.3
Custer	2,491	2,426	65	2.6	2,476	2,400	76	3.1
Delta	13,622	13,179	443	3.3	13,459	12,948	511	3.8
Denver	439,359	426,400	12,959	2.9	444,702	429,458	15,244	3.4
Dolores	1,172	1,142	30	2.6	1,141	1,096	45	3.9
Douglas	208,919	204,200	4,719	2.3	211,404	205,628	5,776	2.7
Eagle	39,949	39,162	787	2.0	36,096	35,017	1,079	3.0
El Paso	354,571	343,967	10,604	3.0	361,759	348,810	12,949	3.6
Elbert	16,169	15,836	333	2.1	16,089	15,675	414	2.6
Fremont	14,936	14,286	650	4.4	15,387	14,614	773	5.0
Garfield	32,575	31,738	837	2.6	31,067	30,076	991	3.2
Gilpin	3,962	3,861	101	2.5	4,008	3,884	124	3.1
Grand	10,283	10,053	230	2.2	9,493	9,224	269	2.8
Gunnison	12,017	11,755	262	2.2	11,421	11,084	337	3.0
Hinsdale	453	442	11	2.4	447	433	14	3.1
Huerfano	2,571	2,413	158	6.1	2,567	2,380	187	7.3
Jackson	960	942	18	1.9	910	891	19	2.1
Jefferson	345,099	336,458	8,641	2.5	349,071	338,715	10,356	3.0
Kiowa	923	908	15	1.6	816	797	19	2.3
Kit Carson	4,168	4,104	64	1.5	3,888	3,806	82	2.1
La Plata	29,889	29,014	875	2.9	31,165	30,181	984	3.2
Lake	5,360	5,255	105	2.0	5,101	4,966	135	2.6
Larimer	212,087	207,057	5,030	2.4	214,298	208,245	6,053	2.8
Las Animas	6,247	5,958	289	4.6	6,272	5,944	328	5.2
Lincoln	2,270	2,207	63	2.8	2,199	2,133	66	3.0
Logan	10,488	10,257	231	2.2	10,478	10,187	291	2.8
Mesa	78,036	75,581	2,455	3.1	79,018	76,182	2,836	3.6
Mineral	456	446	10	2.2	388	376	12	3.1
Moffat	6,783	6,571	212	3.1	6,861	6,634	227	3.3
Montezuma	13,059	12,610	449	3.4	13,401	12,894	507	3.8
Montrose	22,482	21,835	647	2.9	22,509	21,781	728	3.2
Morgan	15,558	15,140	418	2.7	15,405	14,909	496	3.2
Otero	7,918	7,616	302	3.8	7,966	7,590	376	4.7
Ouray	2,802	2,732	70	2.5	2,835	2,752	83	2.9
Park	11,757	11,471	286	2.4	11,805	11,487	318	2.7
Phillips	2,537	2,499	38	1.5	2,325	2,276	49	2.1
Pitkin	11,140	10,847	293	2.6	10,893	10,328	565	5.2
Prowers	6,318	6,174	144	2.3	6,099	5,921	178	2.9
Pueblo	78,452	75,099	3,353	4.3	79,694	75,639	4,055	5.1
Rio Blanco	2,738	2,644	94	3.4	2,753	2,644	109	4.0
Rio Grande	5,300	5,088	212	4.0	5,151	4,924	227	4.4
Routt	16,011	15,667	344	2.1	15,493	15,056	437	2.8
Saguache	3,482	3,377	105	3.0	3,349	3,222	127	3.8
San Juan	634	617	17	2.7	595	575	20	3.4
San Miguel	7,050	6,892	158	2.2	6,114	5,810	304	5.0
Sedgwick	1,185	1,158	27	2.3	1,103	1,073	30	2.7
Summit	25,007	24,593	414	1.7	23,161	22,648	513	2.2
Teller	13,282	12,922	360	2.7	13,539	13,117	422	3.1
Washington	2,742	2,684	58	2.1	2,552	2,489	63	2.5
Weld	168,716	163,640	5,076	3.0	169,712	163,785	5,927	3.5
Yuma	5,795	5,707	88	1.5	5,257	5,146	111	2.1

All estimates made in cooperation with the U.S. Department of Labor, Bureau of Labor Statistics and adjusted to Current Population Survey data. Estimates have been revised to incorporate population data from the American Community Survey.
 Colorado Department of Labor and Employment 2022

Not Seasonally Adjusted Labor Force

	December 2022				December 2021			
	Labor Force	Employment	Unemployment	Rate	Labor force	Employment	Unemployment	Rate
Colorado	3,229,977	3,140,451	89,526	2.8	3,184,396	3,069,774	114,622	3.6
Metropolitan Statistical Area								
Boulder	201,887	197,458	4,429	2.2	198,590	193,073	5,517	2.8
Colorado Springs	367,853	356,889	10,964	3.0	364,630	350,819	13,811	3.8
Denver-Aurora-Lakewood	1,735,541	1,687,640	47,901	2.8	1,691,446	1,629,015	62,431	3.7
Fort Collins	212,087	207,057	5,030	2.4	208,863	202,604	6,259	3.0
Grand Junction	78,036	75,581	2,455	3.1	77,746	74,698	3,048	3.9
Greeley	168,716	163,640	5,076	3.0	167,574	161,228	6,346	3.8
Pueblo	78,452	75,099	3,353	4.3	77,843	73,381	4,462	5.7
Counties								
Adams	283,922	274,863	9,059	3.2	277,490	265,498	11,992	4.3
Alamosa	8,301	8,014	287	3.5	8,574	8,247	327	3.8
Arapahoe	377,449	366,823	10,626	2.8	368,392	353,945	14,447	3.9
Archuleta	6,958	6,765	193	2.8	7,258	7,008	250	3.4
Baca	2,121	2,090	31	1.5	2,262	2,230	32	1.4
Bent	1,972	1,910	62	3.1	1,985	1,901	84	4.2
Boulder	201,887	197,458	4,429	2.2	198,590	193,073	5,517	2.8
Broomfield	42,706	41,695	1,011	2.4	41,418	40,224	1,194	2.9
Chaffee	10,216	9,962	254	2.5	10,294	10,012	282	2.7
Cheyenne	1,149	1,129	20	1.7	1,213	1,195	18	1.5
Clear Creek	6,199	6,033	166	2.7	6,049	5,827	222	3.7
Conejos	4,040	3,929	111	2.7	4,199	4,068	131	3.1
Costilla	1,900	1,824	76	4.0	1,950	1,872	78	4.0
Crowley	1,377	1,328	49	3.6	1,458	1,404	54	3.7
Custer	2,491	2,426	65	2.6	2,370	2,307	63	2.7
Delta	13,622	13,179	443	3.3	14,485	13,971	514	3.5
Denver	439,359	426,400	12,959	2.9	428,646	411,447	17,199	4.0
Dolores	1,172	1,142	30	2.6	1,235	1,198	37	3.0
Douglas	208,919	204,200	4,719	2.3	202,430	197,052	5,378	2.7
Eagle	39,949	39,162	787	2.0	39,589	38,500	1,089	2.8
El Paso	354,571	343,967	10,604	3.0	351,500	338,128	13,372	3.8
Elbert	16,169	15,836	333	2.1	15,821	15,426	395	2.5
Fremont	14,936	14,286	650	4.4	15,587	14,798	789	5.1
Garfield	32,575	31,738	837	2.6	33,363	32,330	1,033	3.1
Gilpin	3,962	3,861	101	2.5	3,879	3,728	151	3.9
Grand	10,283	10,053	230	2.2	10,162	9,887	275	2.7
Gunnison	12,017	11,755	262	2.2	12,214	11,927	287	2.3
Hinsdale	453	442	11	2.4	422	412	10	2.4
Huerfano	2,571	2,413	158	6.1	2,678	2,514	164	6.1
Jackson	960	942	18	1.9	1,016	994	22	2.2
Jefferson	345,099	336,458	8,641	2.5	335,900	324,758	11,142	3.3
Kiowa	923	908	15	1.6	1,026	1,007	19	1.9
Kit Carson	4,168	4,104	64	1.5	4,522	4,431	91	2.0
La Plata	29,889	29,014	875	2.9	30,913	29,817	1,096	3.5
Lake	5,360	5,255	105	2.0	5,315	5,167	148	2.8
Larimer	212,087	207,057	5,030	2.4	208,863	202,604	6,259	3.0
Las Animas	6,247	5,958	289	4.6	6,582	6,263	319	4.8
Lincoln	2,270	2,207	63	2.8	2,421	2,358	63	2.6
Logan	10,488	10,257	231	2.2	11,232	10,919	313	2.8
Mesa	78,036	75,581	2,455	3.1	77,746	74,698	3,048	3.9
Mineral	456	446	10	2.2	490	477	13	2.7
Moffat	6,783	6,571	212	3.1	7,198	6,964	234	3.3
Montezuma	13,059	12,610	449	3.4	13,274	12,754	520	3.9
Montrose	22,482	21,835	647	2.9	22,900	22,126	774	3.4
Morgan	15,558	15,140	418	2.7	16,534	15,968	566	3.4
Otero	7,918	7,616	302	3.8	8,421	8,053	368	4.4
Ouray	2,802	2,732	70	2.5	2,697	2,615	82	3.0
Park	11,757	11,471	286	2.4	11,421	11,110	311	2.7
Phillips	2,537	2,499	38	1.5	2,701	2,651	50	1.9
Pitkin	11,140	10,847	293	2.6	11,410	11,022	388	3.4
Prowers	6,318	6,174	144	2.3	6,600	6,403	197	3.0
Pueblo	78,452	75,099	3,353	4.3	77,843	73,381	4,462	5.7
Rio Blanco	2,738	2,644	94	3.4	2,938	2,816	122	4.2
Rio Grande	5,300	5,088	212	4.0	5,628	5,352	276	4.9
Routt	16,011	15,667	344	2.1	16,544	16,100	444	2.7
Saguache	3,482	3,377	105	3.0	3,644	3,505	139	3.8
San Juan	634	617	17	2.7	578	562	16	2.8
San Miguel	7,050	6,892	158	2.2	6,478	6,284	194	3.0
Sedgwick	1,185	1,158	27	2.3	1,250	1,220	30	2.4
Summit	25,007	24,593	414	1.7	24,933	24,361	572	2.3
Teller	13,282	12,922	360	2.7	13,130	12,691	439	3.3
Washington	2,742	2,684	58	2.1	3,000	2,934	66	2.2
Weld	168,716	163,640	5,076	3.0	167,574	161,228	6,346	3.8
Yuma	5,795	5,707	88	1.5	6,158	6,050	108	1.8

All estimates made in cooperation with the U.S. Department of Labor, Bureau of Labor Statistics and adjusted to Current Population Survey data. Estimates have been revised to incorporate population data from the American Community Survey.
 Colorado Department of Labor and Employment 2022



Colorado LMI Data Overview

December 2022

Employment					
	Dec-22	Nov-22	Dec-21	Change from previous:	
				Period	Year
Nonfarm Wage and Salary Employment (SA)	2,911,500	2,902,900	2,806,800	8,600	104,700
Total Resident Employment (SA)	3,138,000	3,138,400	3,037,700	(400)	100,300
	Q2 2022	Q1 2022	Q2 2021		
UI Covered Total Employment	2,821,406	2,756,407	2,686,561	64,999	134,845
UI Covered Private Employment	2,389,121	2,332,408	2,262,701	56,713	126,420

Unemployment					
	Dec-22	Nov-22	Dec-21	Change from previous:	
				Period	Year
Unemployment (SA)	106,700	113,400	133,000	(6,700)	(26,300)
Percent Unemployed (SA)	3.3%	3.5%	4.2%	(0.2)	(0.9)
	Dec-22	Nov-22	Dec-21		
Initial Claims	13,633	13,517	14,953	116	(1,320)
Continued Weeks Claimed	96,469	85,061	123,219	11,408	(26,750)

Wages and Earnings					
	Q2 2022	Q1 2022	Q2 2021	Change from previous:	
				Period	Year
Total Average Weekly Wage	\$1,361	\$1,455	\$1,283	(\$94)	\$78
Private Average Weekly Wage	\$1,379	\$1,494	\$1,298	(\$115)	\$81
	Dec-22	Nov-22	Dec-21		
Average Weekly Earnings (Construction)	\$1,161.64	\$1,176.56	\$1,217.75	(\$14.92)	(\$56.11)
Average Weekly Earnings (Manufacturing)	\$1,093.17	\$1,111.47	\$1,042.04	(\$18.30)	\$51.13

CO Unemployment Insurance Trust Fund					
	Nov-22	Oct-22	Nov-21	Change from previous:	
				Period	Year
Employer Contributions	\$48,426,875	\$63,992,804	\$65,501,873	(\$15,565,929)	(\$17,074,998)
Benefits Paid	\$34,628,156	\$31,616,277	\$43,514,743	\$3,011,879	(\$8,886,587)
Average Weekly Benefit Amount	\$528.12	\$507.45	\$410.26	\$20.67	\$117.86
Duration (weeks)	11.52	11.86	27.00	(0.34)	(15.48)
Outstanding Title XII Loan Balance	\$0	\$33,089,861	\$1,014,167,919	(\$33,089,861)	(1,014,167,919)

Consumer Price Index for All Urban Consumers					
	Nov-22	Sep-22	Nov-21	% Change from previous:	
				Period	Year
Not seasonally adjusted					
Denver-Aurora-Lakewood	309.655	308.211	289.621	0.5%	6.9%
US City Average	297.711	296.808	277.948	0.3%	7.1%

(Most current data available for all categories)