

PRESS RELEASE

Colorado Department of Labor and Employment • 633 17th Street, Suite 1200 • Denver, CO 80202 • (303) 318-8004 • Fax: (303) 318-8070

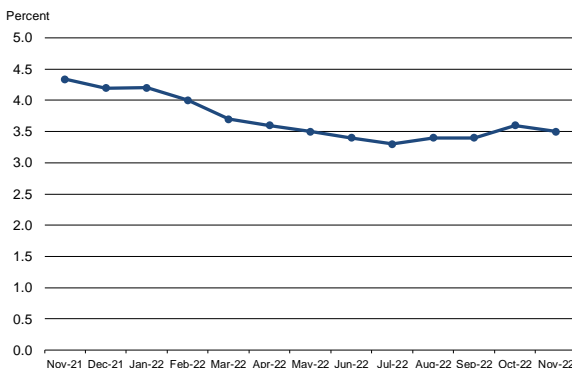
For Immediate Release

Date: December 16, 2022/ 8:00 A.M.
Contact: Office of Government, Policy and Public Relations
Email: cdle_pr@state.co.us
Web: www.colmigateway.com

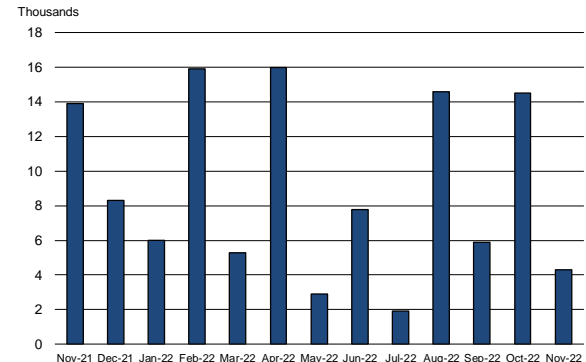
Colorado Employment Situation – November 2022

4,300 Nonfarm Payroll Jobs Added in November; Unemployment Rate Declines to 3.5%

Colorado unemployment rate, seasonally adjusted
November 2021 - November 2022



Colorado nonfarm payroll employment over-the-month
change, seasonally adjusted, November 2021 -
November 2022



Household survey data

- According to the survey of households, Colorado's seasonally adjusted **unemployment rate** decreased one-tenth of a percentage point in November to 3.5 percent. The **number of unemployed individuals** dropped by 2,700 over the same time period to 113,600. Colorado's unemployment rate has ranged between 3.3 and 3.6 percent since April. The national unemployment rate was unchanged in November at 3.7 percent, which translates to approximately 6.0 million unemployed.
- Colorado's **labor force** decreased by 4,700 in November to 3,252,100. The share of Coloradans participating in the labor force fell slightly to 69.2 percent in November, compared to 69.4 percent the month prior. The U.S. labor force participation rate was 62.1 percent in November, dropping one-tenth of a percentage point from the month prior.
- The **number of individuals employed** in Colorado declined by 2,000 in November to 3,138,400, which represents 66.8 percent of the state's 16+ population. The rate of 66.8 percent is one and a half percentage points higher than a year ago and three-tenths of a percentage point higher than it was in February 2020. The national employment-to-population ratio was 59.9 percent in November and remains below its February 2020 level of 61.2 percent.

Establishment survey data

Employers in Colorado added 4,300 **nonfarm payroll jobs** from October to November for a total of 2,901,900 jobs, according to the survey of business establishments. Private sector payroll jobs increased 2,000 and government added 2,300 jobs. Over the past 31 months, Colorado has added 456,800 nonfarm payroll jobs, compared to losses totaling 374,500 in March and April 2020. That translates to a **job recovery rate** of 122.0 percent, which exceeds the U.S. rate of 104.7 percent.

Since May 2020, Colorado's **private sector** has grown by 448,500 jobs, compared to declines of 358,800 in early 2020. That translates to a **job recovery rate** of 125.0 percent and outpaces the U.S. rate of 107.2 percent.

Other highlights from the establishment survey:

- **October estimates** were revised down to 2,897,600, and the over the month change from September to October was a gain of 14,500 rather than the originally estimated increase of 17,700 (monthly revisions are based on additional responses from businesses and government agencies since the last published estimates).
- **Private industry sectors with significant job gains** in November were: educational and health services (~2,800), professional and business services (~2,200), and financial activities (~2,000). Significant over the month private sector **job loss** occurred in construction (~3,400) and leisure and hospitality (~2,600).
- **Since November 2021**, nonfarm payroll jobs have increased 103,400, with the private sector growing by 90,900 and government adding 12,500 jobs. The largest **private sector job gains** were in professional and business services (~31,200), educational and health services (~16,000), and leisure and hospitality (~12,200). During that same period financial activities (~700) **payroll jobs declined**. Colorado's **rate of job growth** over the past year is 3.7 percent, outpacing the U.S. rate of 3.3 percent.
- Over the year, the **average workweek** for all Colorado employees on private nonfarm payrolls was flat at 33.2 hours, while **average hourly earnings** grew from \$33.07 to \$35.88, over three dollars more than the national average hourly earnings of \$32.82.

###

All Colorado estimates from the establishment and household surveys, including greater geographic detail, are available at: <http://www.colmigateway.com>. Estimates for all states and the nation are available at: <http://www.bls.gov>.

For data visualizations, visit public.tableau.com/app/profile/cdle.lmi

The **December 2022 Colorado Employment Situation** will be released at 8:00 AM on Friday, January 20, 2023. The full schedule of release dates for calendar year 2022 estimates is available at www.colmigateway.com.

###

Technical Notes

This release provides information on industry employment and labor force statistics for November 2022, the most current estimates available from the Colorado Department of Labor and Employment. The reference period for the establishment and household surveys was the pay period or week that includes the 12th of the month.

The unemployment rate, labor force, labor force participation, total employment and the number of unemployed are based on a survey of households. The total employment estimate derived from this survey is intended to measure the number of people employed.

Nonfarm payroll jobs estimates are based on a survey of business establishments and government agencies, and are intended to measure the number of jobs, not the number of people employed. Other series based on this survey include private sector average weekly hours, average hourly earnings and average weekly earnings.

The business establishment survey covers about seven times the number of households surveyed and is therefore considered a more reliable indicator of economic conditions. Because the estimates are based on two separate surveys, one measuring jobs by worksite and the other measuring persons employed and unemployed by household, estimates based on these surveys may provide seemingly conflicting results.

###

Supplemental information available in following pages

NOVEMBER 2022

EMPLOYMENT SITUATION SUPPLEMENTAL CHARTS

December 16, 2022

This briefing provides information on industry employment and labor force statistics, derived from surveys of business establishments and households. The reference period for these surveys is the pay period or week that includes the 12th of the month. The reference week for November was specifically November 6th – November 12th.

Colorado Unemployment Rate Declines One-Tenth of a Percentage Point in November; U.S. Rate Unchanged

Percent
15

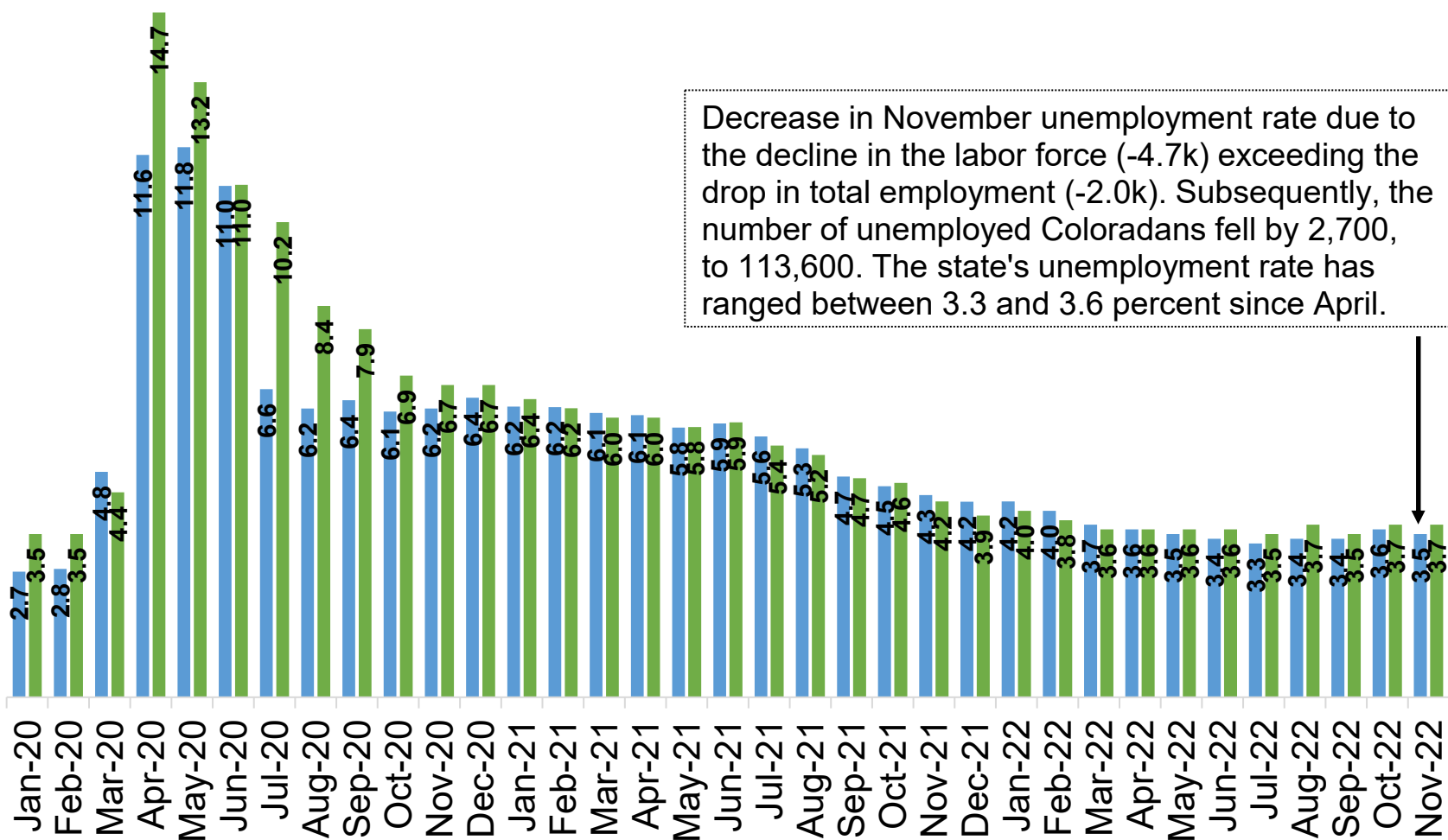
12

9

6

3

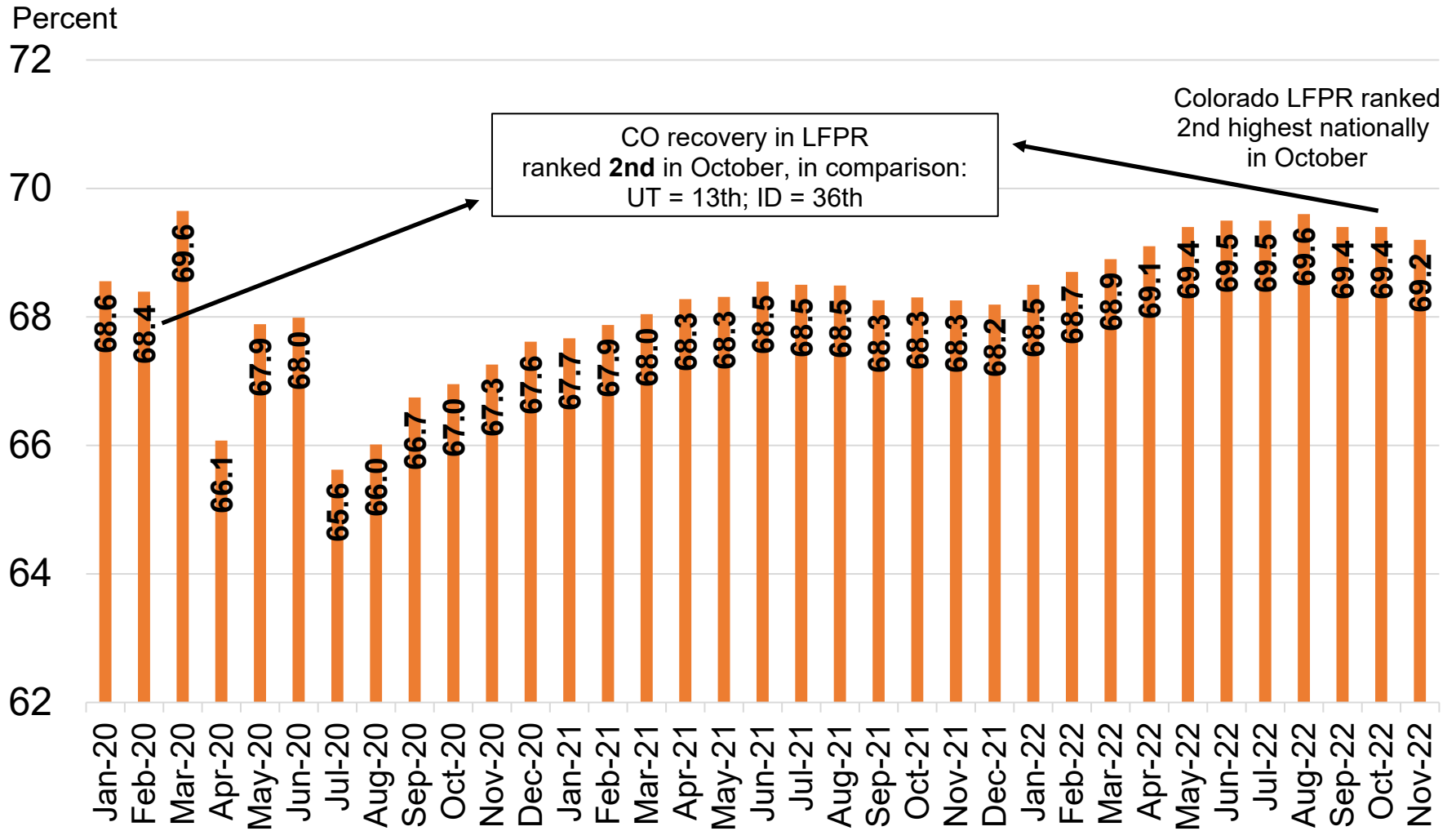
0



Source: Colorado Department of Labor and Employment; Bureau of Labor Statistics
Data seasonally adjusted

■ Colorado ■ U.S.

Colorado's Labor Force Participation Rate Moves Down to 69.2 Percent in November



Source: Colorado Department of Labor and Employment; Bureau of Labor Statistics

Data seasonally adjusted. Estimates share of Colorado's 16+ population that is in the labor force in a given month.

For further information on labor force definitions, go here: <https://www.bls.gov/lau/laufaq.htm>

Colorado's Employment-to-Population Ratio Declines Again, but Remains Above Pre-Pandemic Rate

Percent

72

70

68

66

64

62

60

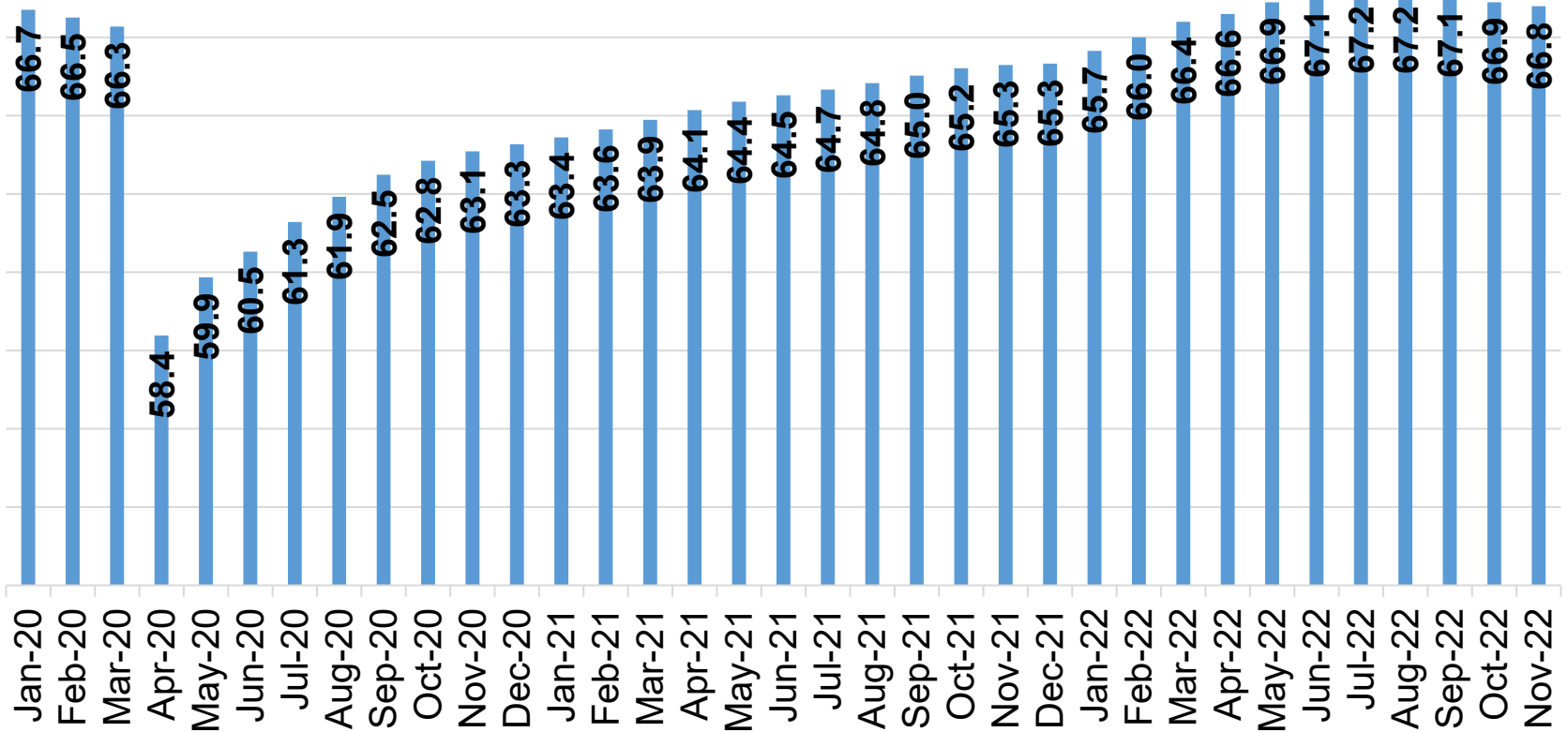
58

56

54

52

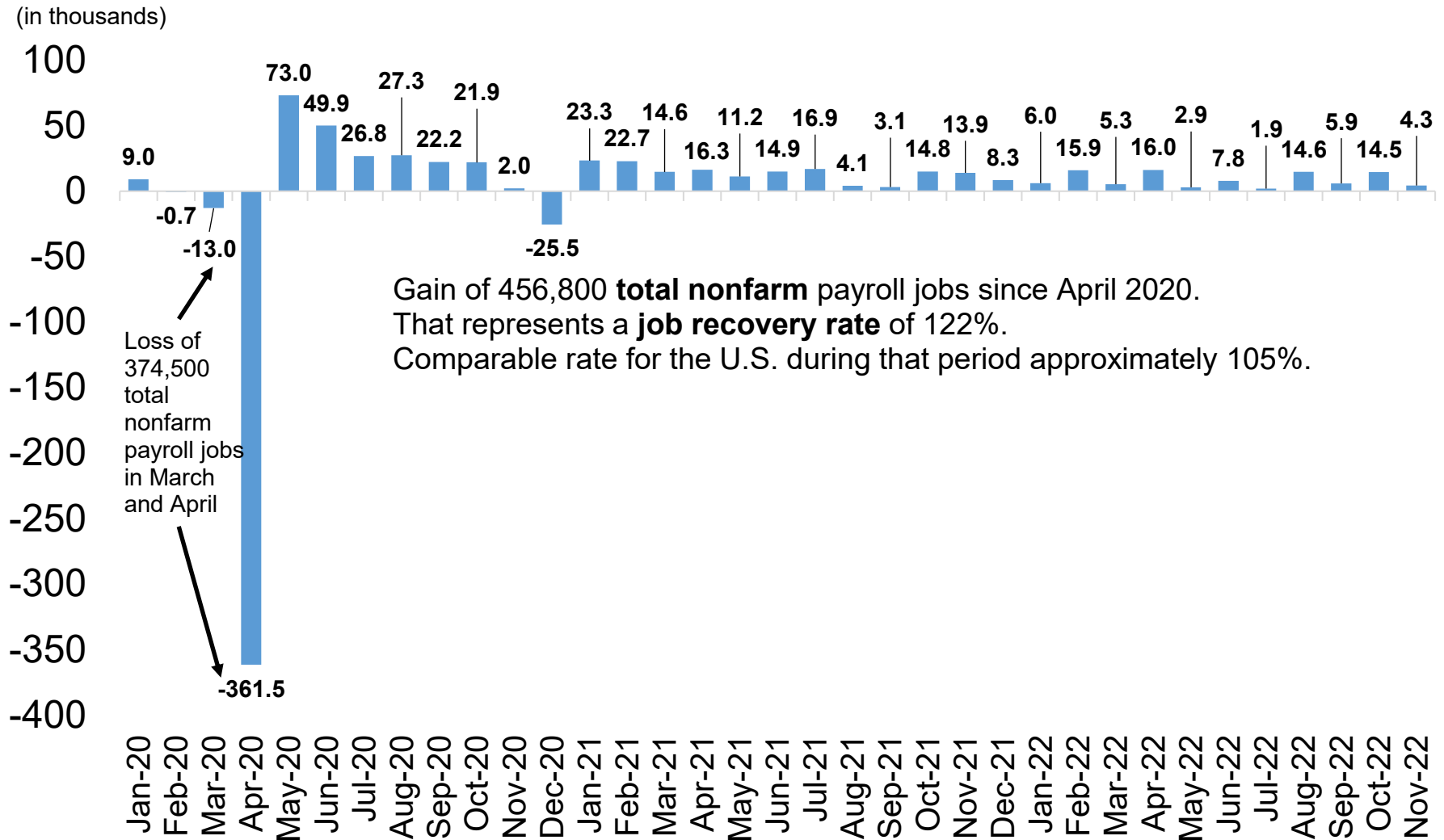
Colorado EPOP ranked
3rd highest nationally
in October



Source: Colorado Department of Labor and Employment; Bureau of Labor Statistics

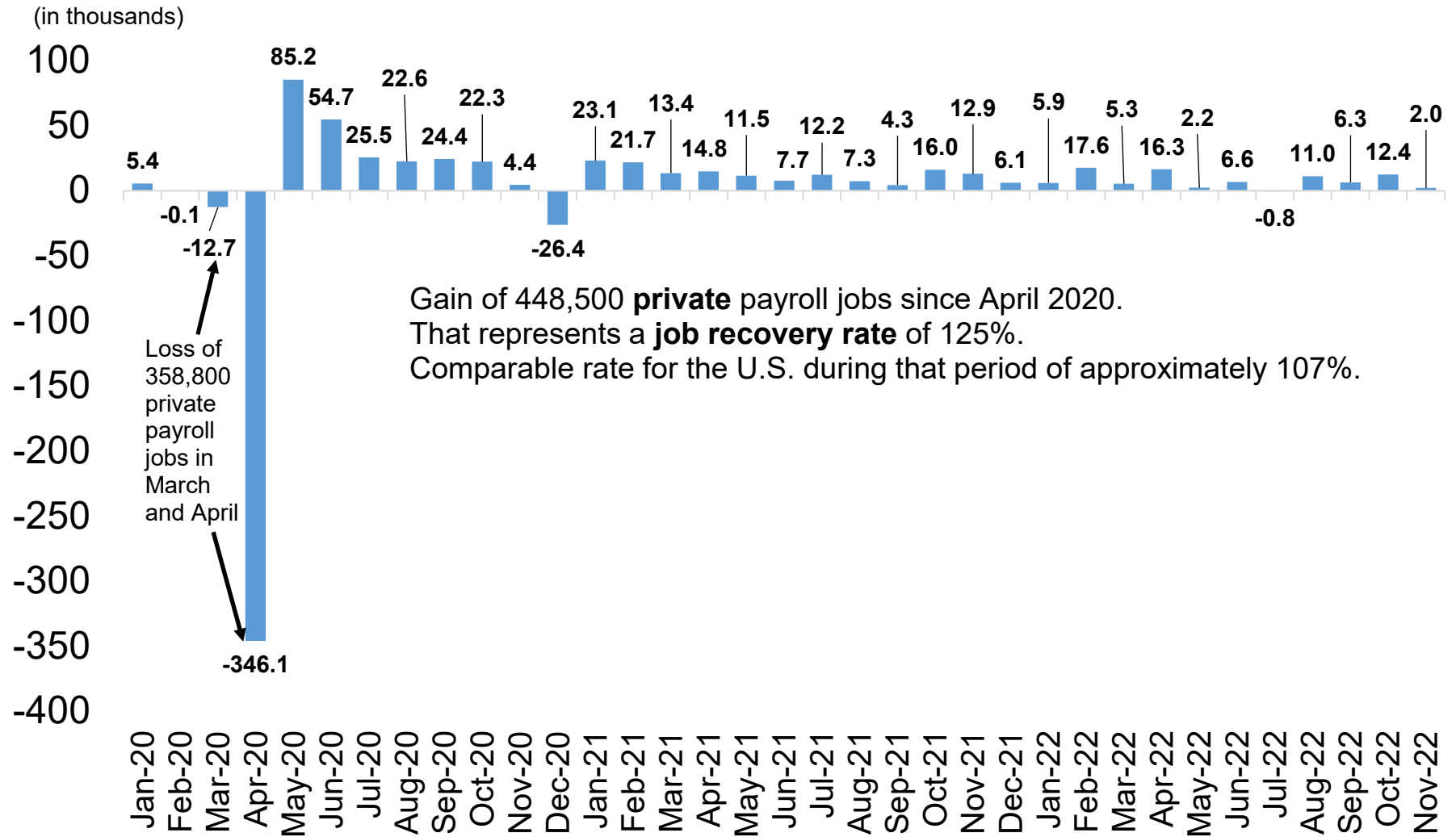
Data seasonally adjusted. Estimates share of Colorado's 16+ population that is employed in a given month.

Colorado Added 4,300 Total Nonfarm Jobs in November, October Numbers Revised Down 3,200



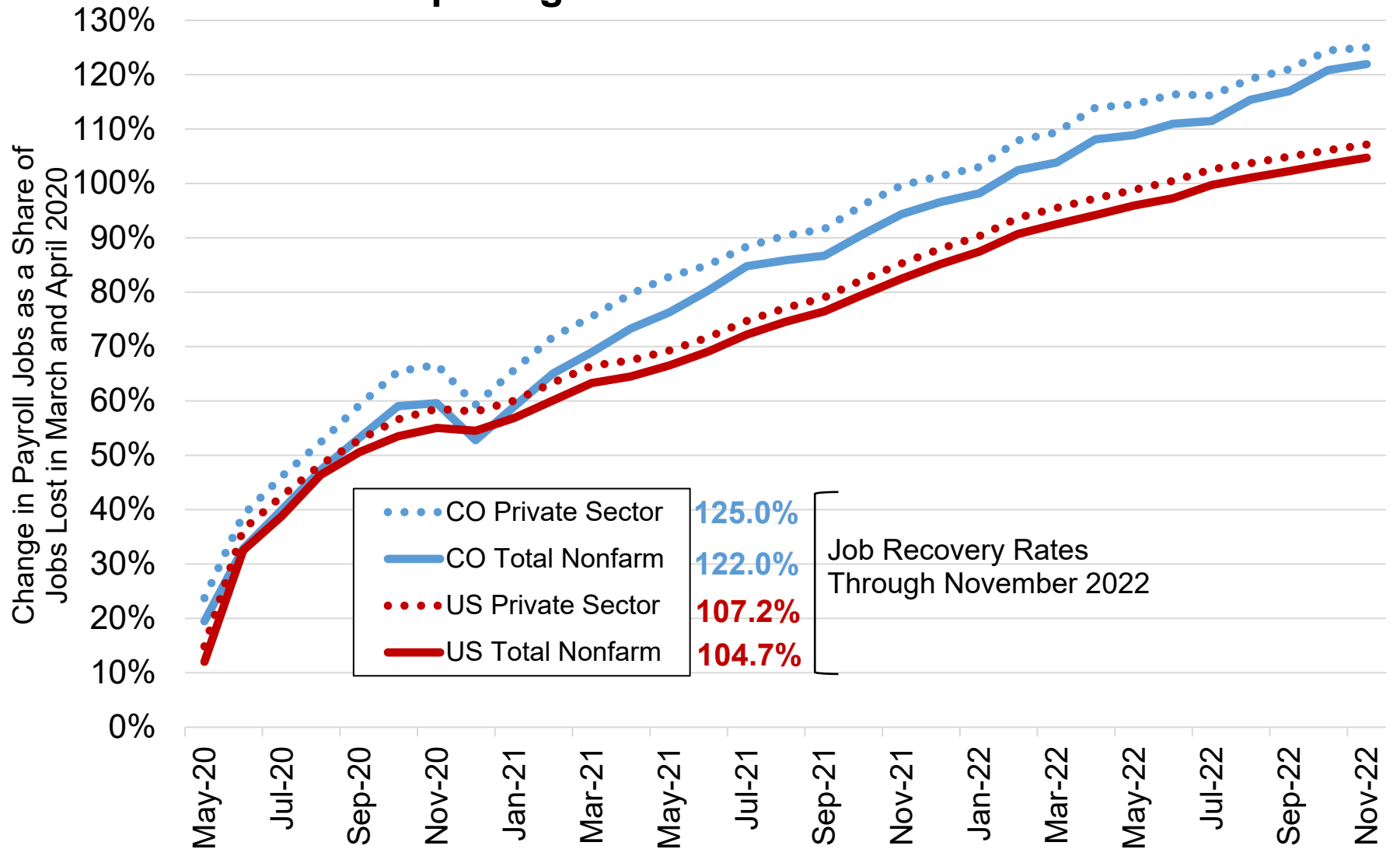
Source: Colorado Department of Labor and Employment; Bureau of Labor Statistics
Data seasonally adjusted

2,000 Private Sector Jobs Gained in November, October Numbers Revised Down 3,000



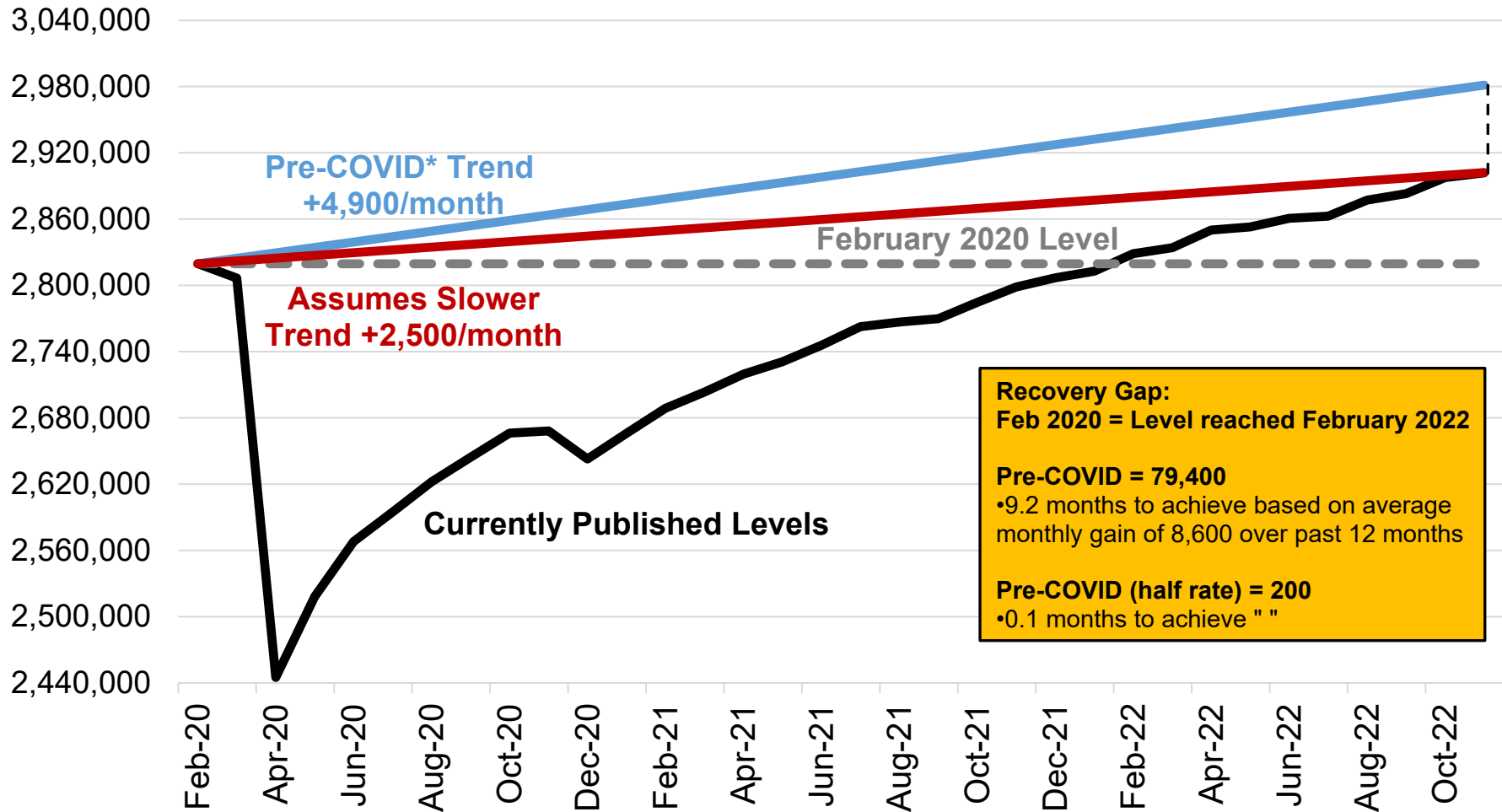
Source: Colorado Department of Labor and Employment; Bureau of Labor Statistics
Data seasonally adjusted

Colorado's Rate of Job Recovery Notably Outpacing the U.S. Since Mid-2021



Source: Colorado Department of Labor and Employment; Bureau of Labor Statistics
Data seasonally adjusted

Colorado Total Nonfarm Employment and the Gap Between Different Measures of Recovery Baselines



Recovery Gap:
 Feb 2020 = Level reached February 2022

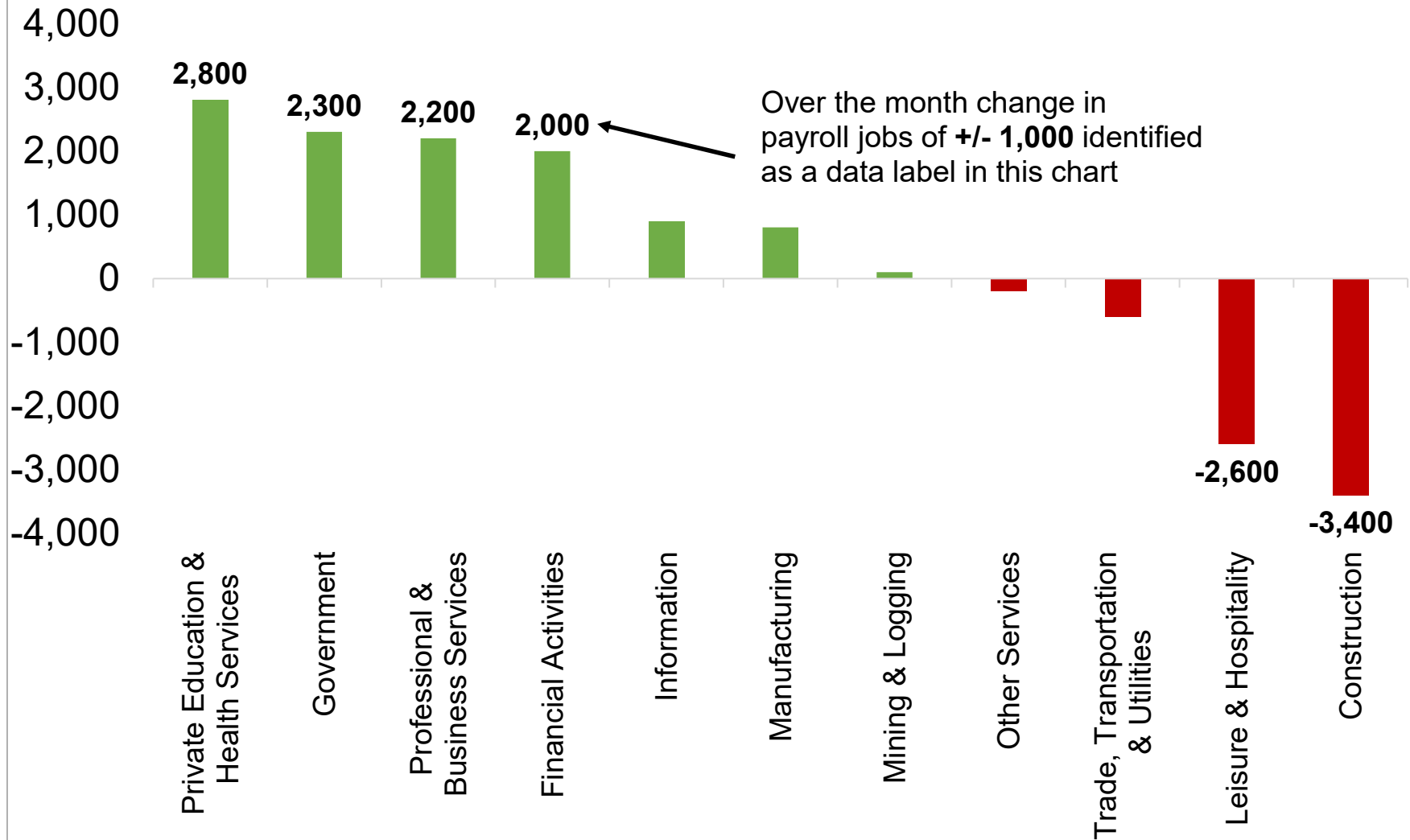
Pre-COVID = 79,400
 •9.2 months to achieve based on average monthly gain of 8,600 over past 12 months

Pre-COVID (half rate) = 200
 •0.1 months to achieve " "

Source: Colorado Department of Labor and Employment; Bureau of Labor Statistics
 Data seasonally adjusted

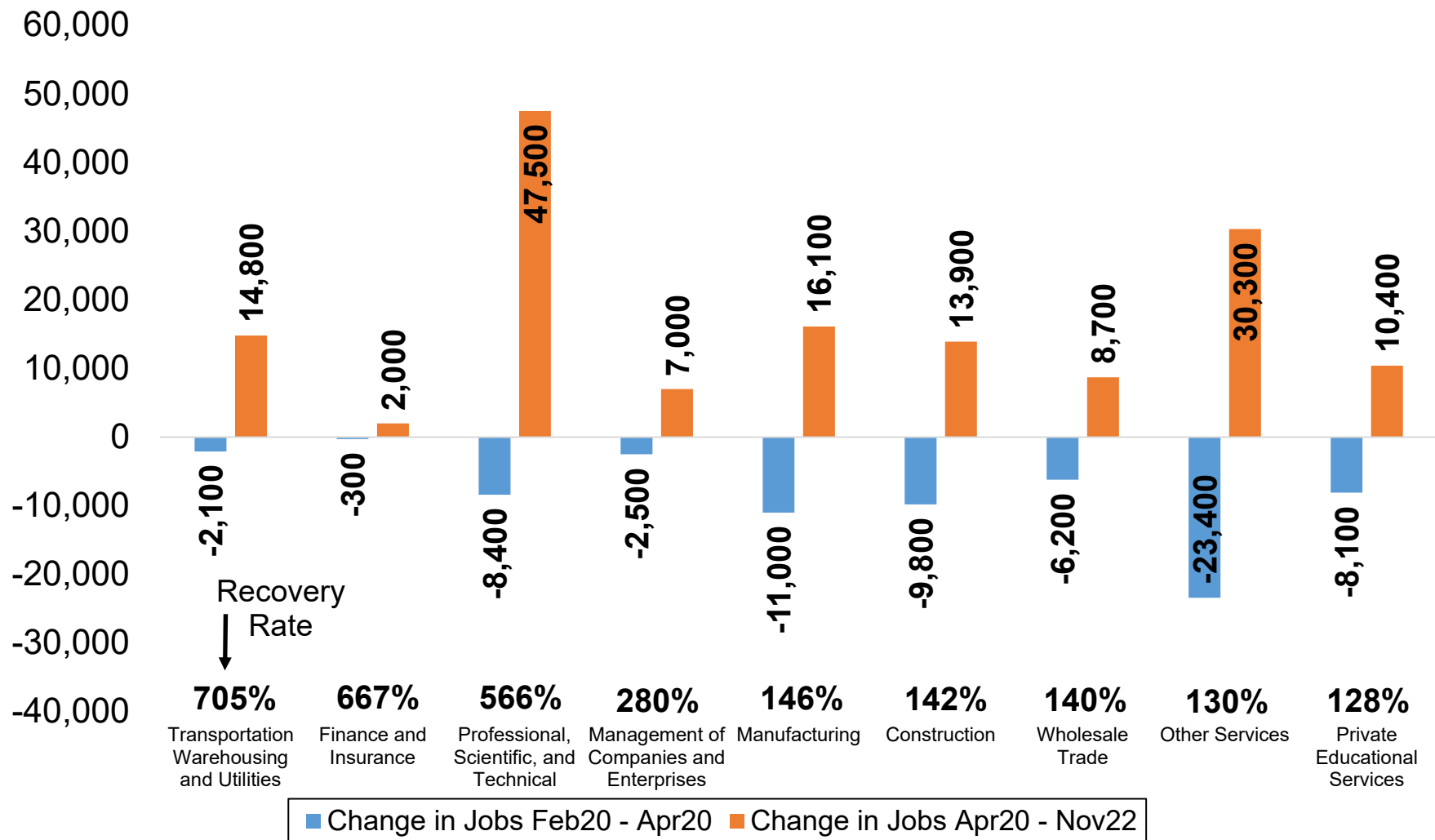
*Note: the **blue line** represents the trendline in the level of total nonfarm employment if the 2019 average monthly gain of 4,900 payroll jobs had held constant. This can be used as a baseline if no pandemic-related recession had occurred and job growth had continued at an uninterrupted pace. **Red line** assumes a slower counterfactual trendline.

Four Industries Gained at Least 2,000 Payroll Jobs in November; Two Supersectors Had Notable Declines



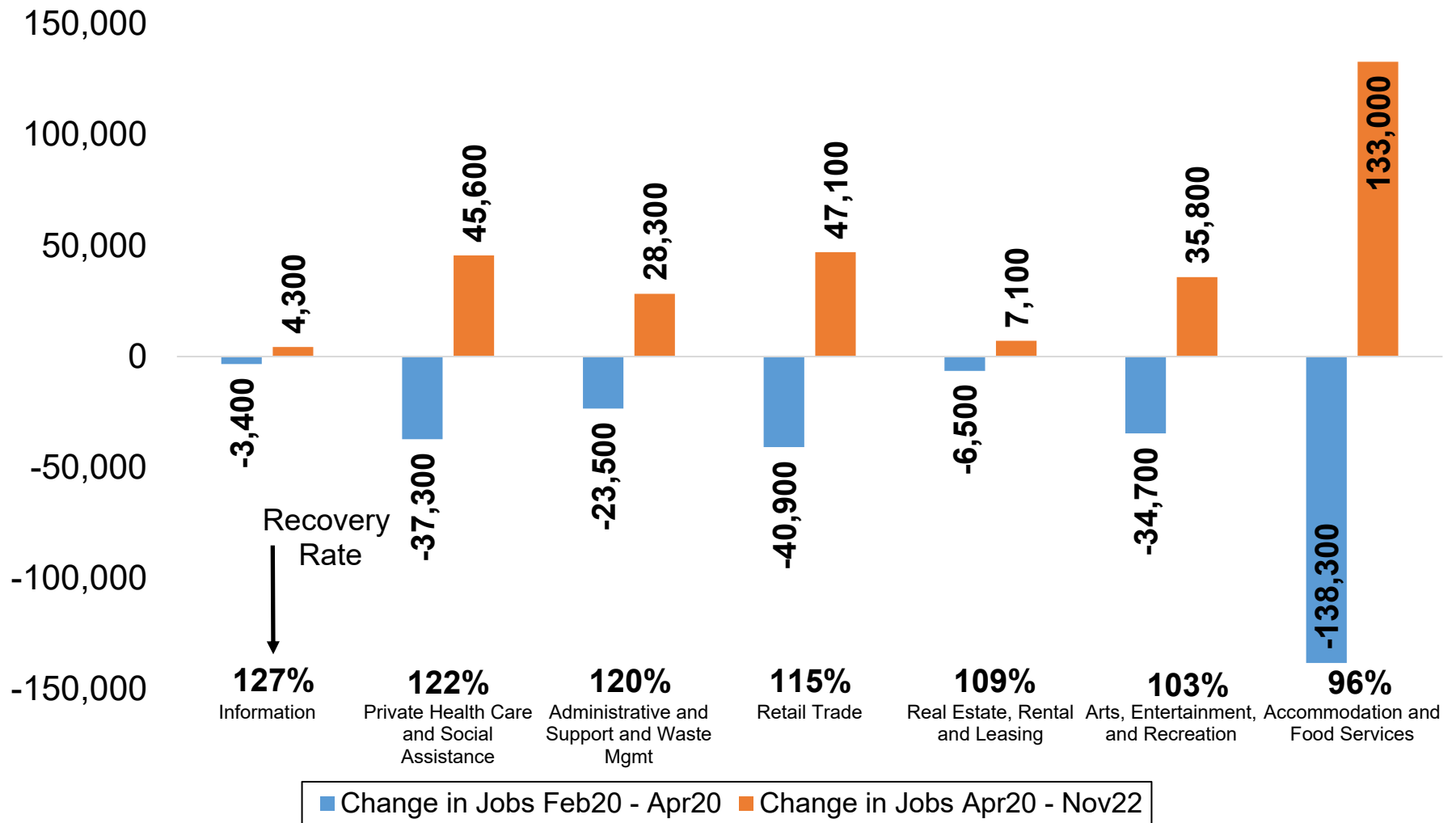
Source: Colorado Department of Labor and Employment; Bureau of Labor Statistics
Data seasonally adjusted

Colorado Industry Sectors with the Fastest Payroll Job Recovery Rates



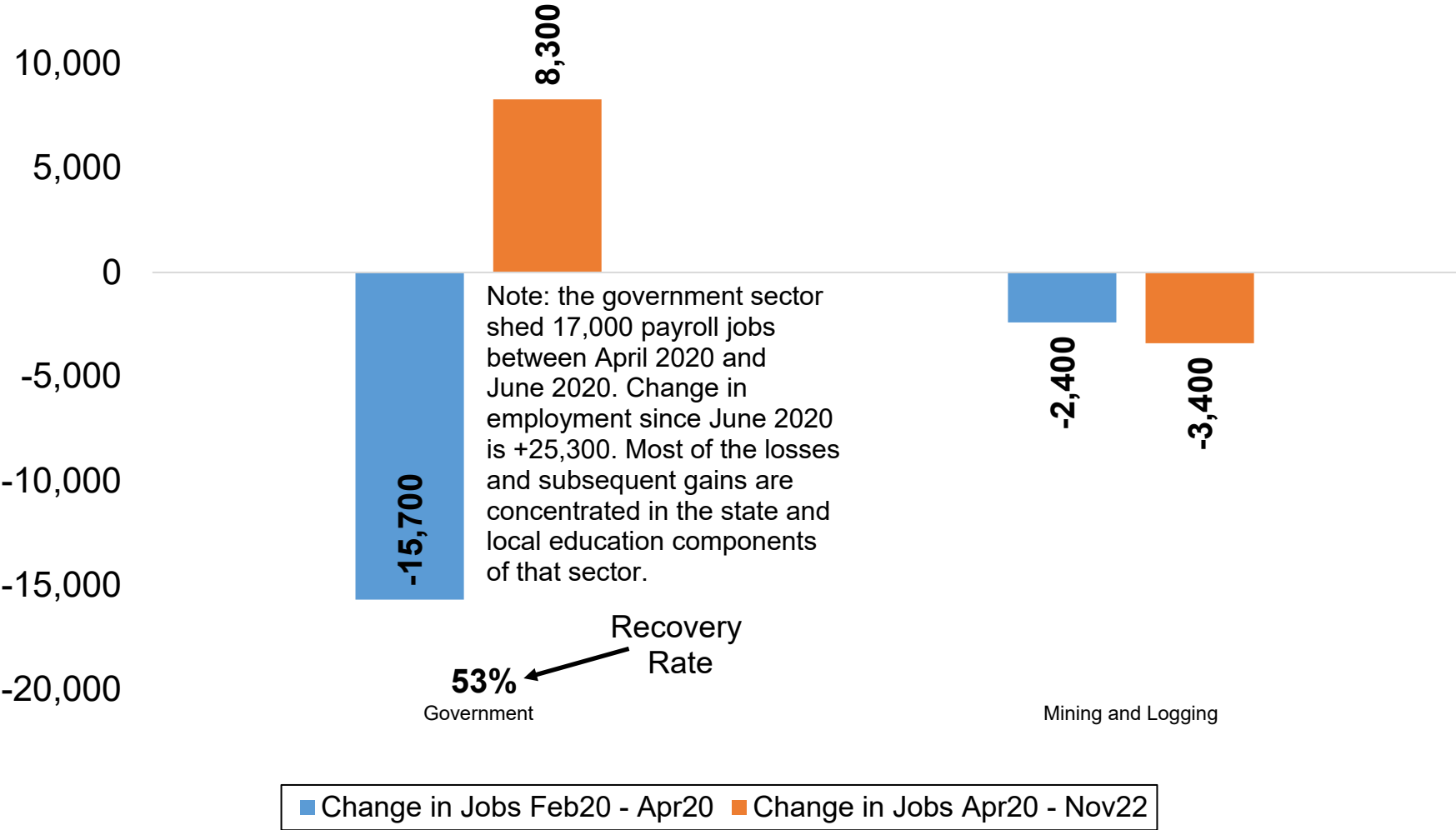
Source: Colorado Department of Labor and Employment; Bureau of Labor Statistics
Data seasonally adjusted

Colorado Industry Sectors with Payroll Job Recovery Rates Between 96 and 127 Percent



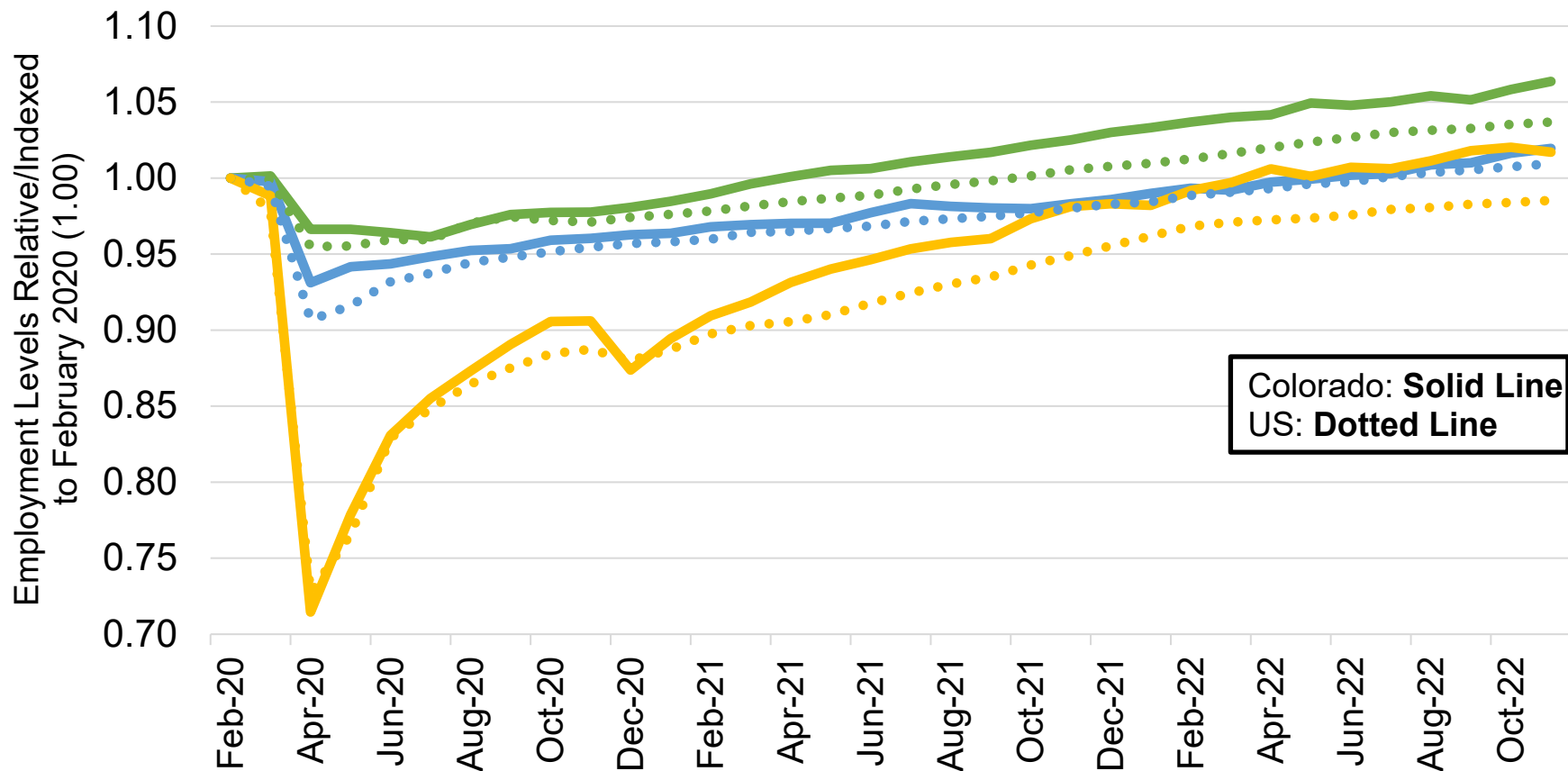
Source: Colorado Department of Labor and Employment; Bureau of Labor Statistics
Data seasonally adjusted

Colorado Industry Sectors with Low Recovery Rates or Continued Losses in Payroll Jobs Since April 2020



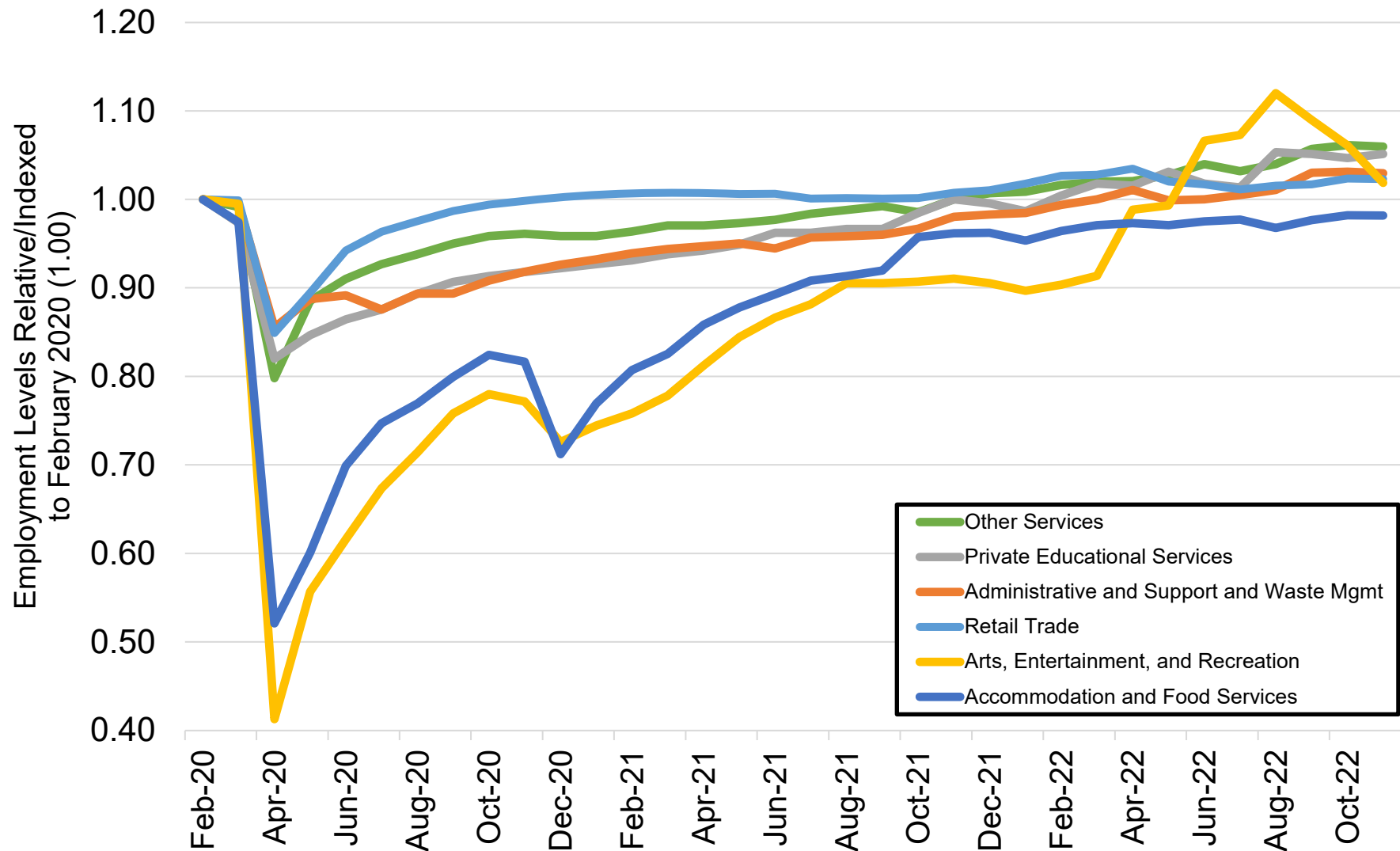
Source: Colorado Department of Labor and Employment; Bureau of Labor Statistics
Data seasonally adjusted

Job Loss and Recovery by Low, Medium, and High Wage Industries (Colorado & U.S.)



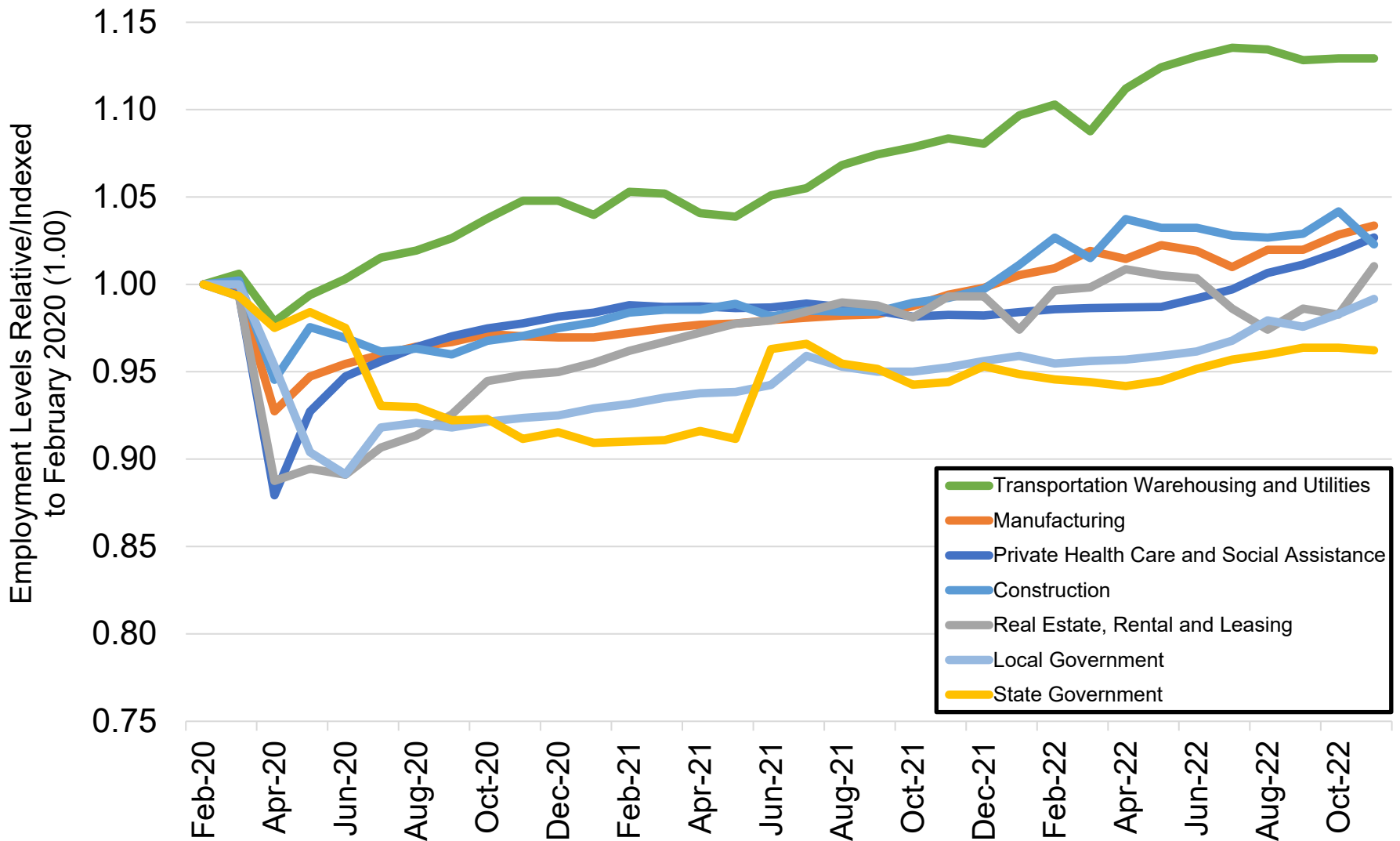
Source: Colorado Department of Labor and Employment; Bureau of Labor Statistics
 Data seasonally adjusted. Note: low, medium, and high wage industries are determined by the 2019 state-level average weekly wage estimates from the Quarterly Census of Employment and Wages. **Low wage industries include:** retail trade; admin support/waste mgmt; private education services; arts, entertainment, and recreation; accommodation and food services; and other services. **Medium wage industries include:** construction; manufacturing; transportation, warehousing, and utilities; real estate, rental, and leasing; private health care and social assistance; state government; and local government. **High wage industries include:** mining and logging; wholesale trade; information; finance and insurance; professional and technical services; management of companies; and federal government.

Colorado Job Loss & Recovery by Low Wage Industries



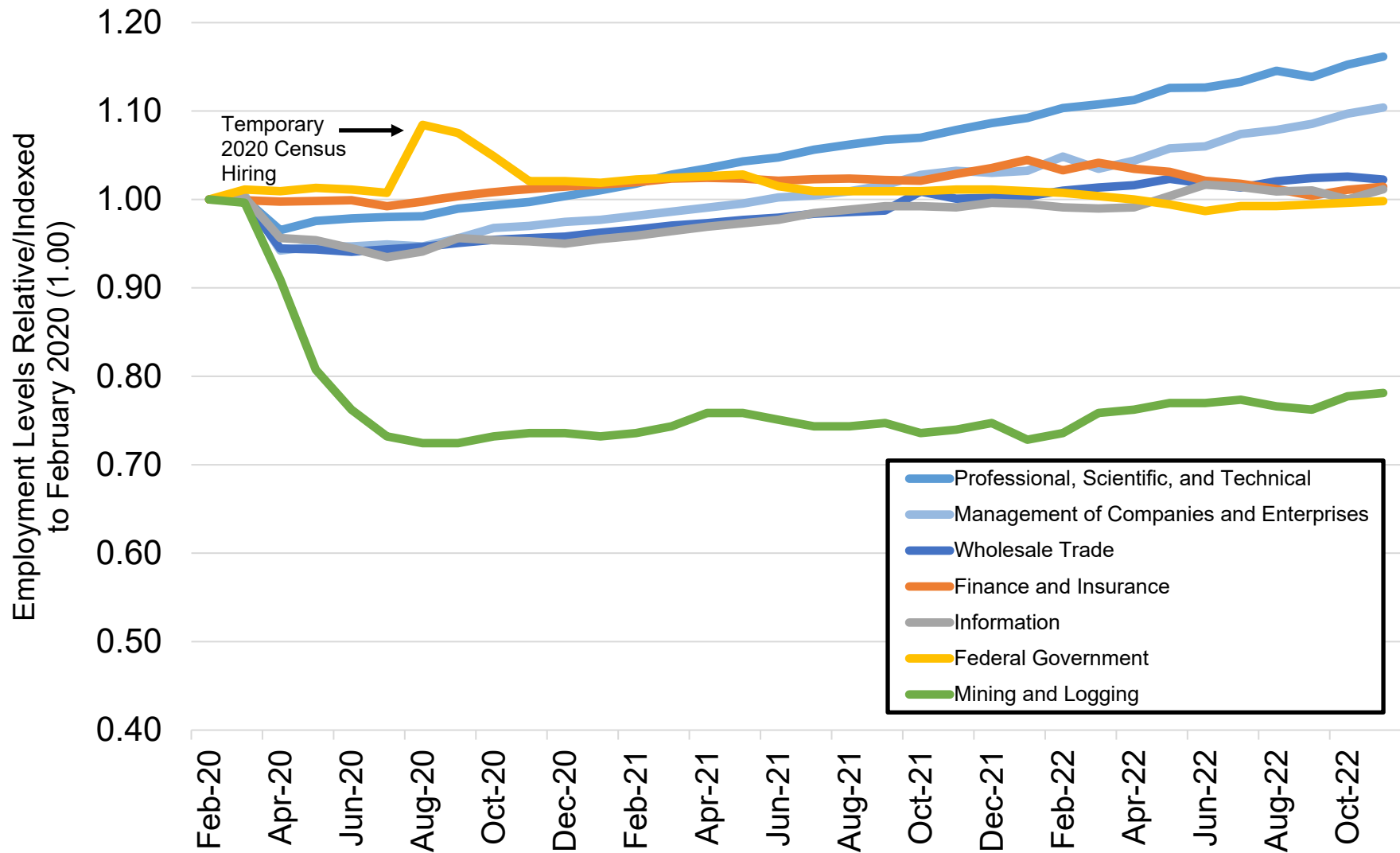
Source: Colorado Department of Labor and Employment; Bureau of Labor Statistics
 Data seasonally adjusted. Note: low wage industries are determined by the 2019 state-level average weekly wage estimates from the Quarterly Census of Employment and Wages.

Colorado Job Loss & Recovery by Medium Wage Industries



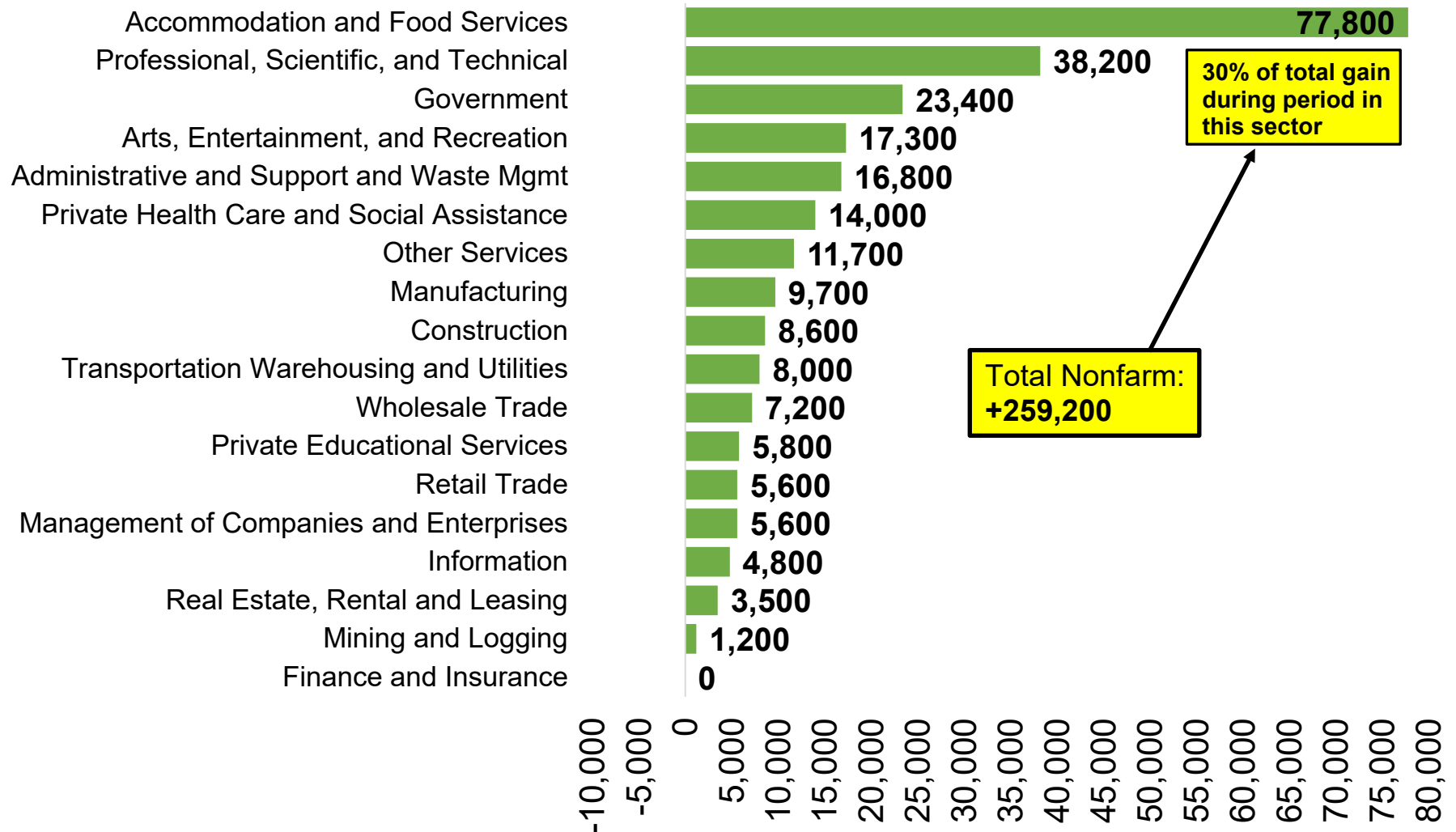
Source: Colorado Department of Labor and Employment; Bureau of Labor Statistics
 Data seasonally adjusted. Note: medium wage industries are determined by the 2019 state-level average weekly wage estimates from the Quarterly Census of Employment and Wages.

Colorado Job Loss & Recovery by High Wage Industries



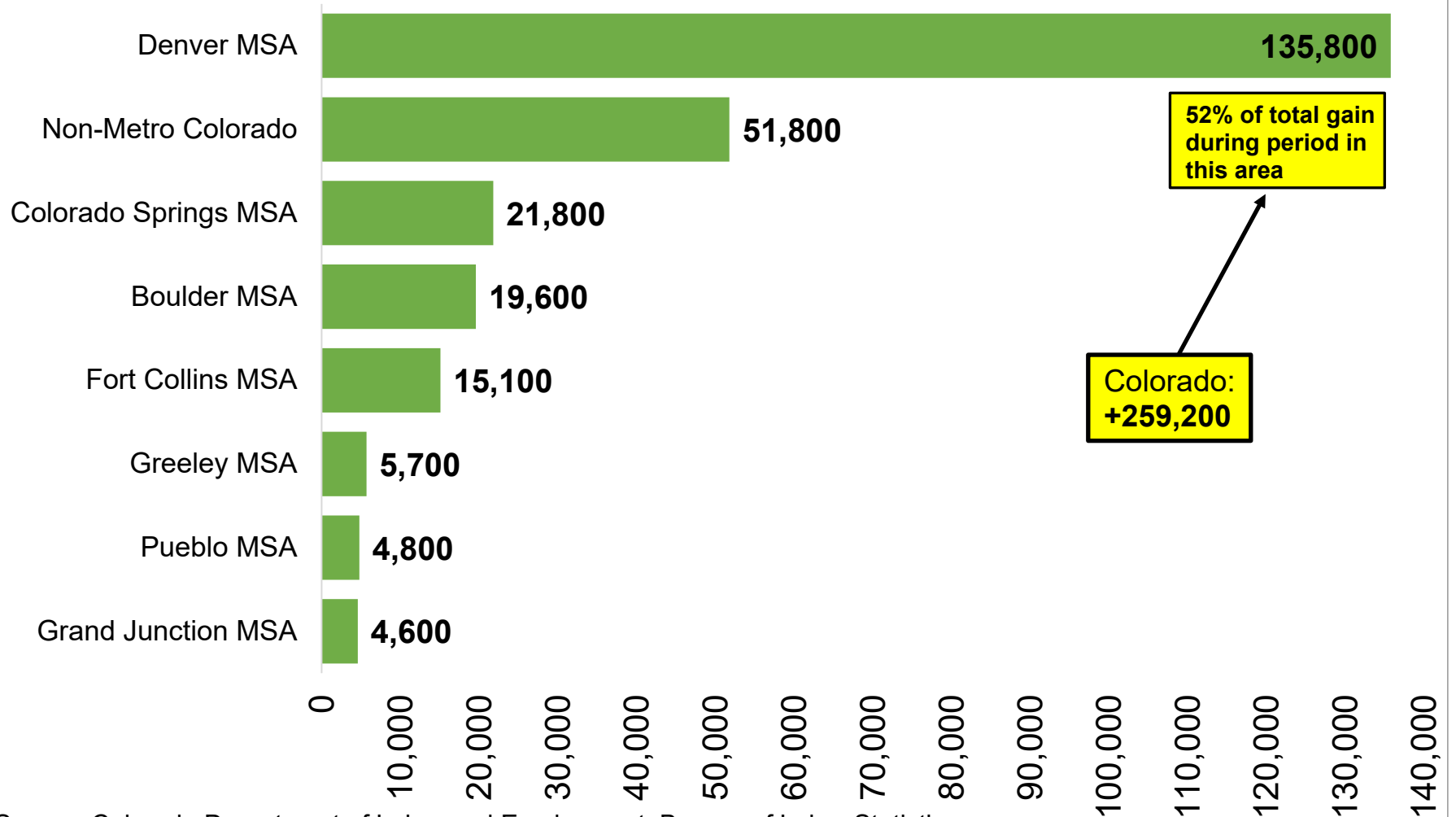
Source: Colorado Department of Labor and Employment; Bureau of Labor Statistics
 Data seasonally adjusted. Note: high wage industries are determined by the 2019 state-level average weekly wage estimates from the Quarterly Census of Employment and Wages.

Change in Payroll Jobs Since December 2020, by Industry Sector



Source: Colorado Department of Labor and Employment; Bureau of Labor Statistics
Data seasonally adjusted

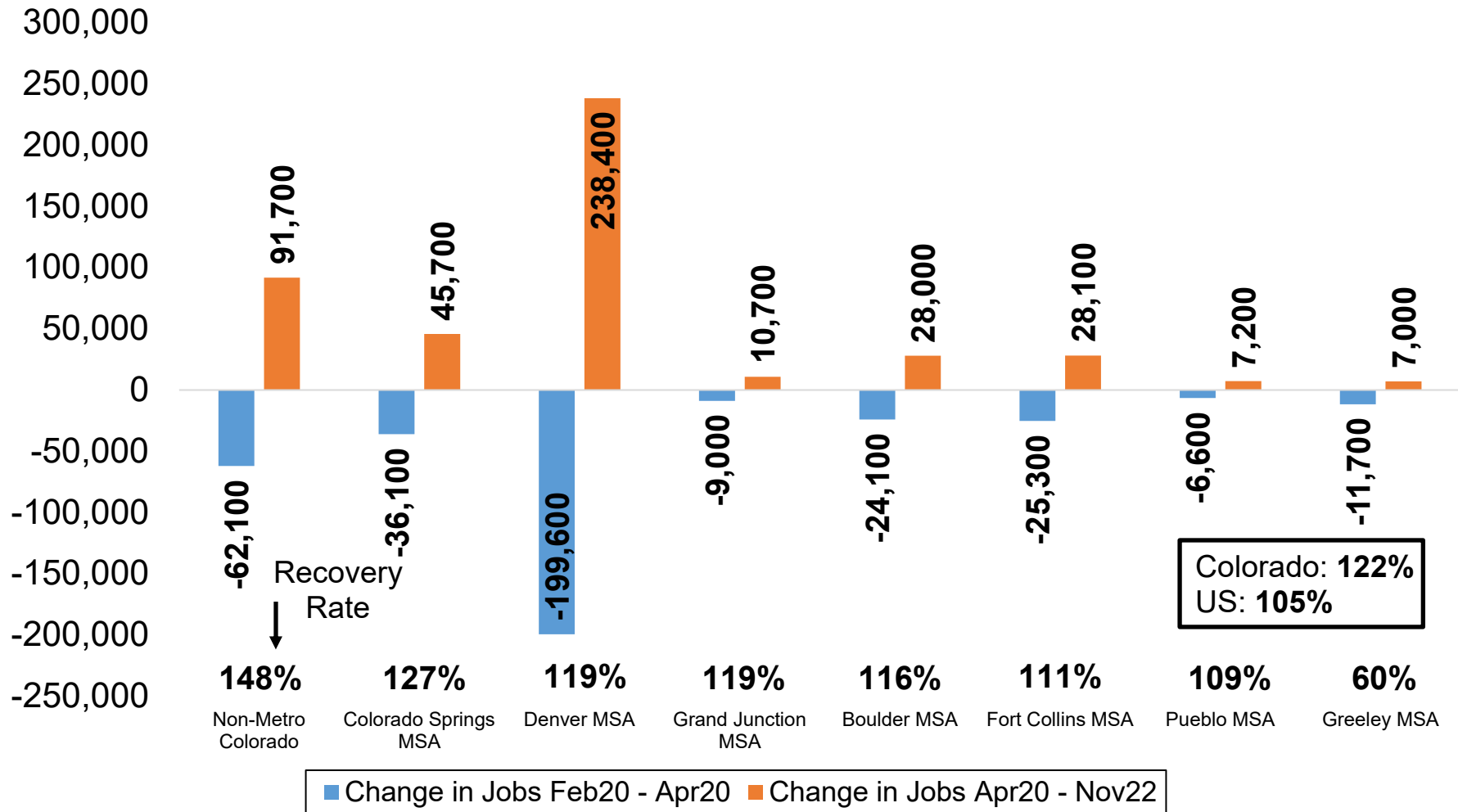
Change in Payroll Jobs Since December 2020, by Colorado Substate Area



Source: Colorado Department of Labor and Employment; Bureau of Labor Statistics
Data seasonally adjusted

Note: MSA = Metropolitan Statistical Area; Non-Metro Colorado = residual of state that is not an MSA (47 counties)

Total Nonfarm Job Recovery Rates by Colorado Substate Area

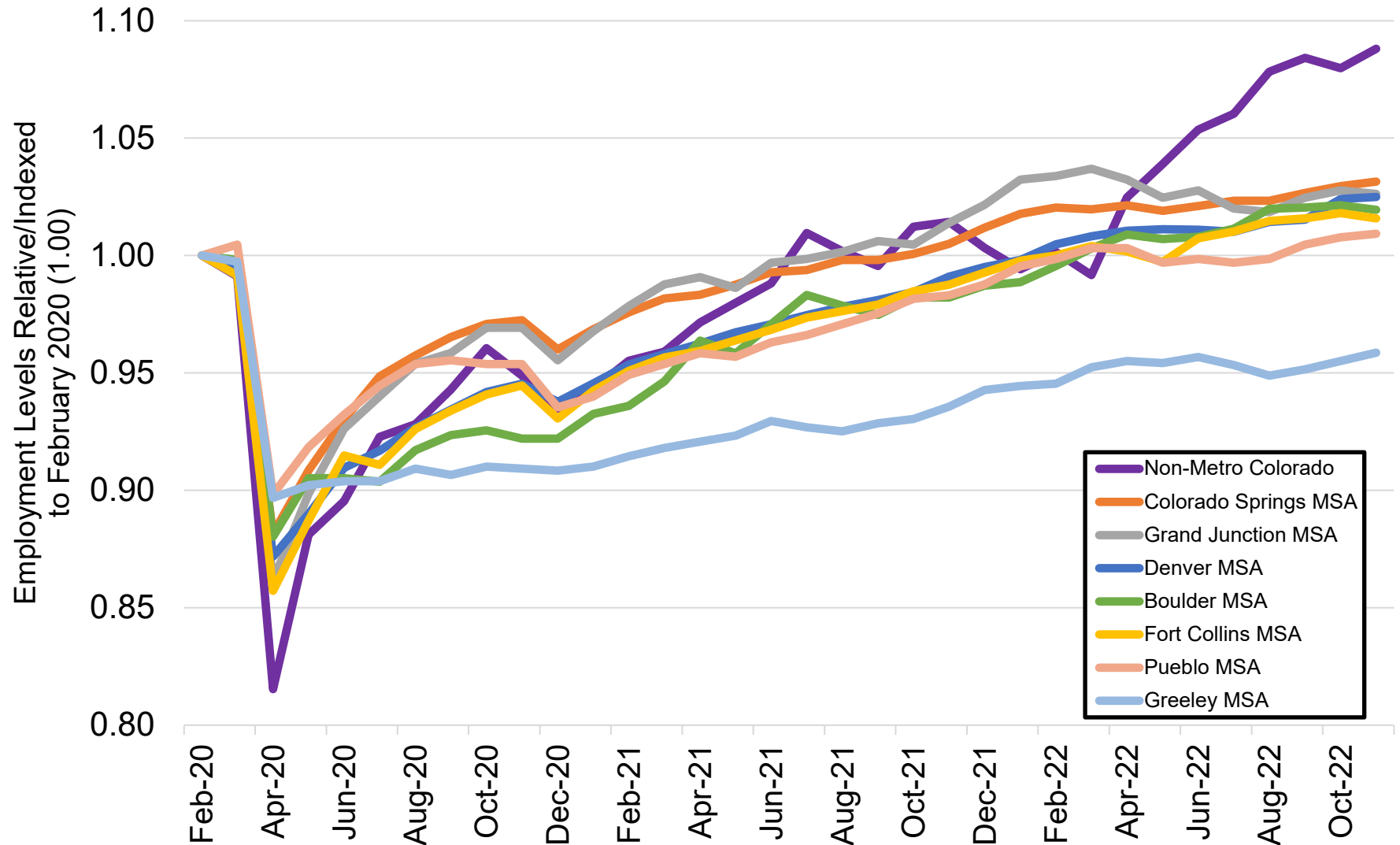


Source: Colorado Department of Labor and Employment; Bureau of Labor Statistics

Data seasonally adjusted

Note: MSA = Metropolitan Statistical Area; Non-Metro Colorado = residual of state that is not an MSA (47 total counties)

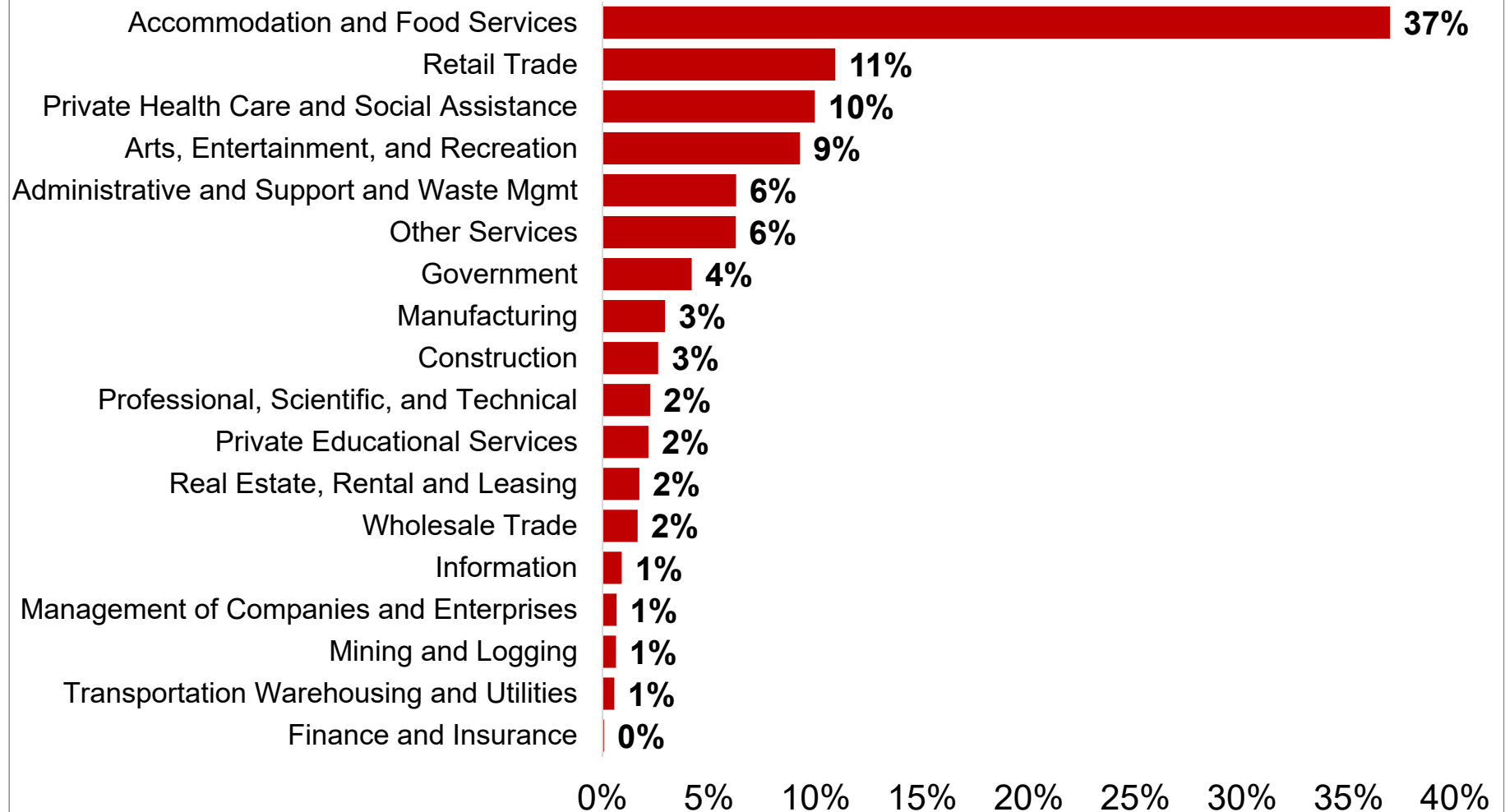
Colorado Job Loss & Recovery by Colorado Substate Area



Source: Colorado Department of Labor and Employment; Bureau of Labor Statistics

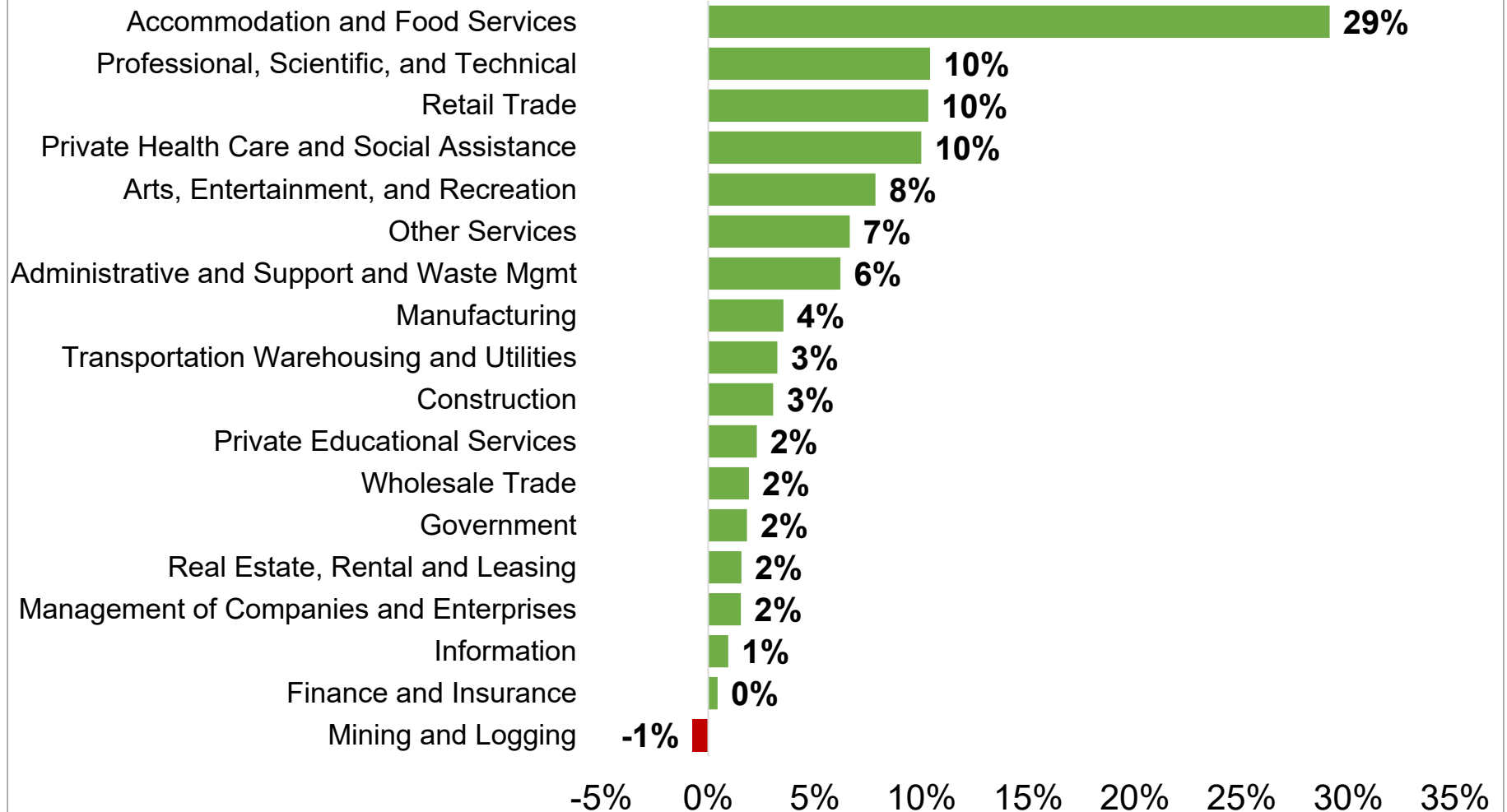
Data seasonally adjusted. Note: MSA = Metropolitan Statistical Area; Non-Metro Colorado = residual of state that is not an MSA (47 counties).

Percent Contribution to Total Colorado Nonfarm Payroll Jobs Lost March & April 2020, by Industry Sector



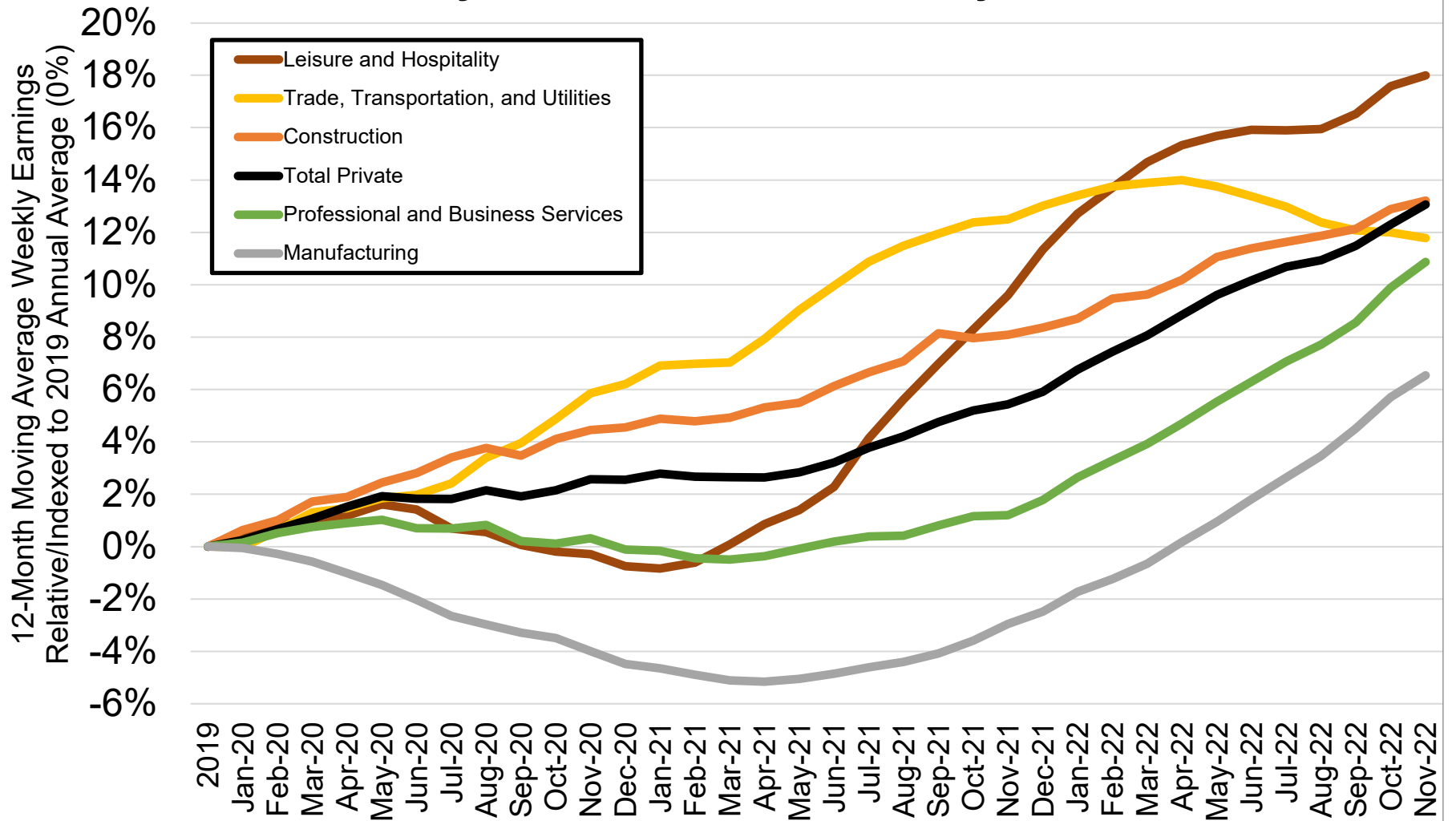
Source: Colorado Department of Labor and Employment; Bureau of Labor Statistics
Data seasonally adjusted

Percent Contribution to Total Colorado Nonfarm Payroll Jobs Added Since April 2020, by Industry Sector



Source: Colorado Department of Labor and Employment; Bureau of Labor Statistics
Data seasonally adjusted

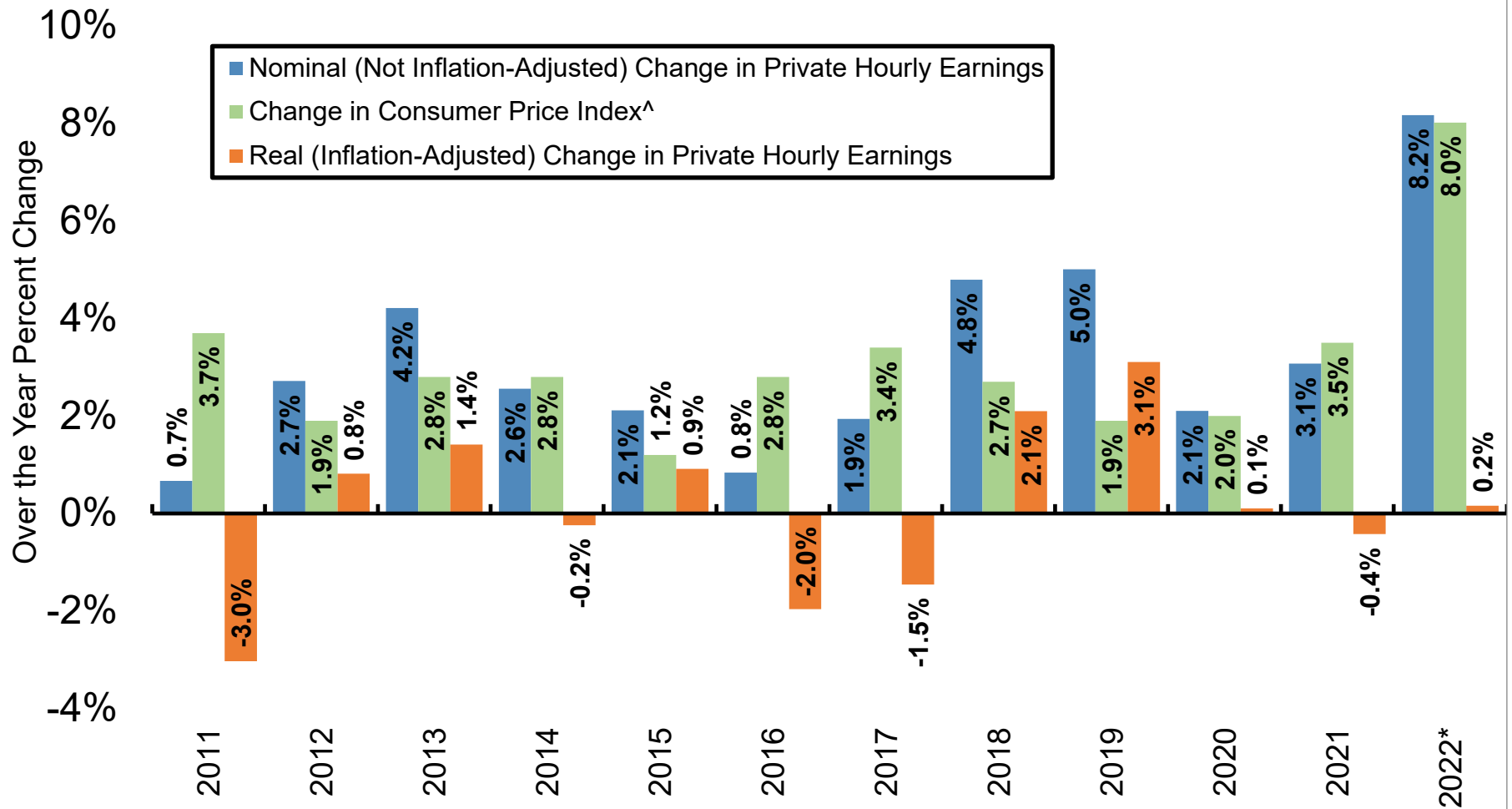
Percent Change in Average Weekly Earnings Since 2019, by Select Colorado Industry



Source: Colorado Department of Labor and Employment; Bureau of Labor Statistics

Data not seasonally adjusted. Note: each month on this chart represents a 12-month moving average and measures the percent change in average weekly earnings compared to the 2019 annual average for that industry.

Nominal and Real Percent Change in Colorado's Private Average Hourly Earnings Since 2011

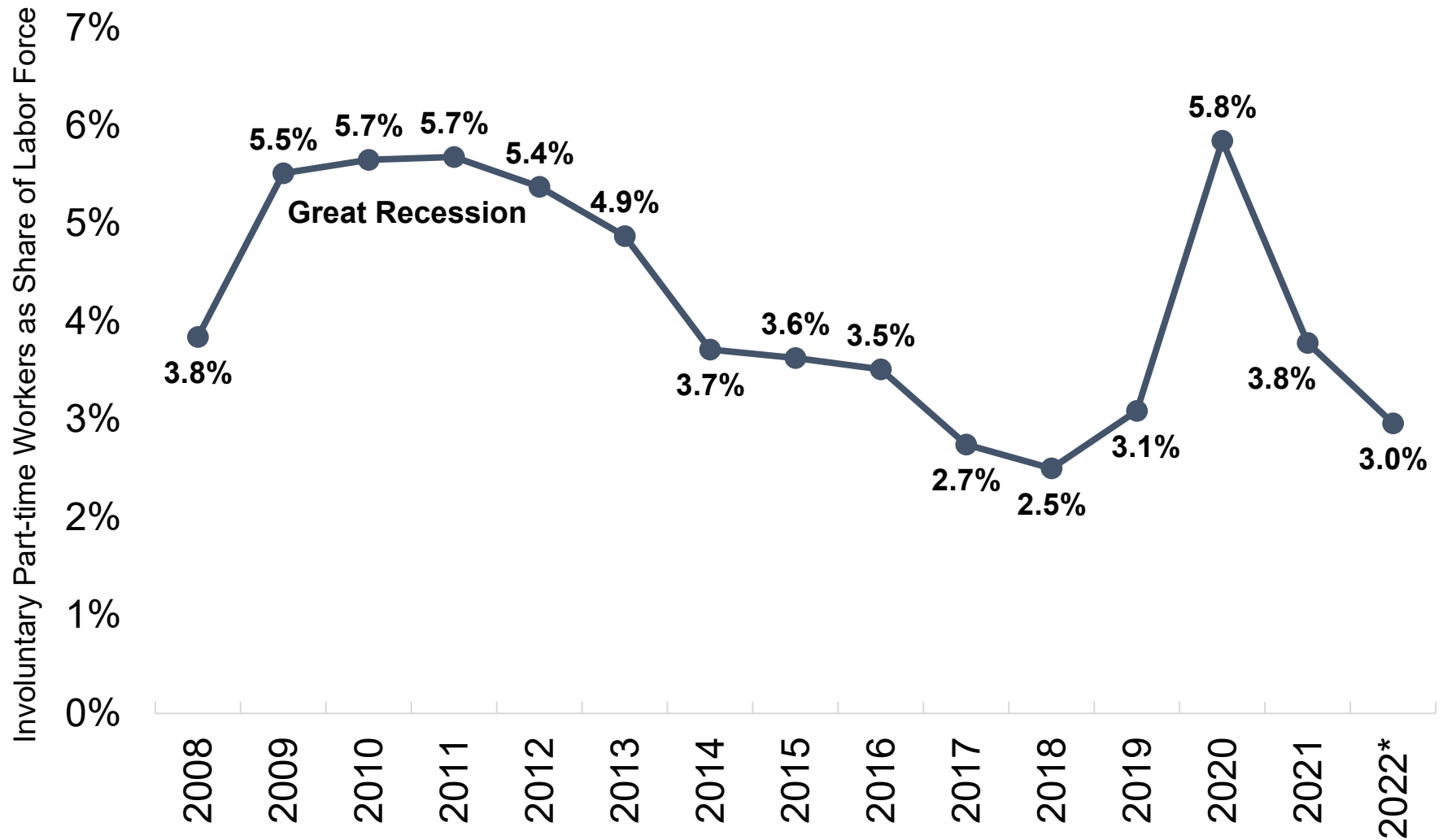


Source: Colorado Department of Labor and Employment estimates; Bureau of Labor Statistics

[^]Note: Denver-Aurora-Lakewood CPI-U estimates were utilized to adjust average hourly earnings for inflation.

That data is available here: <https://www.bls.gov/cpi/regional-resources.htm>. *2022 nominal earnings growth is measured using data for January to November compared to the same period the year prior, while real earnings were adjusted using the average over-the-year change in CPI-U for January, March, May, July, September, and November 2022.

Involuntary Part-Time Workers as Share of Labor Force

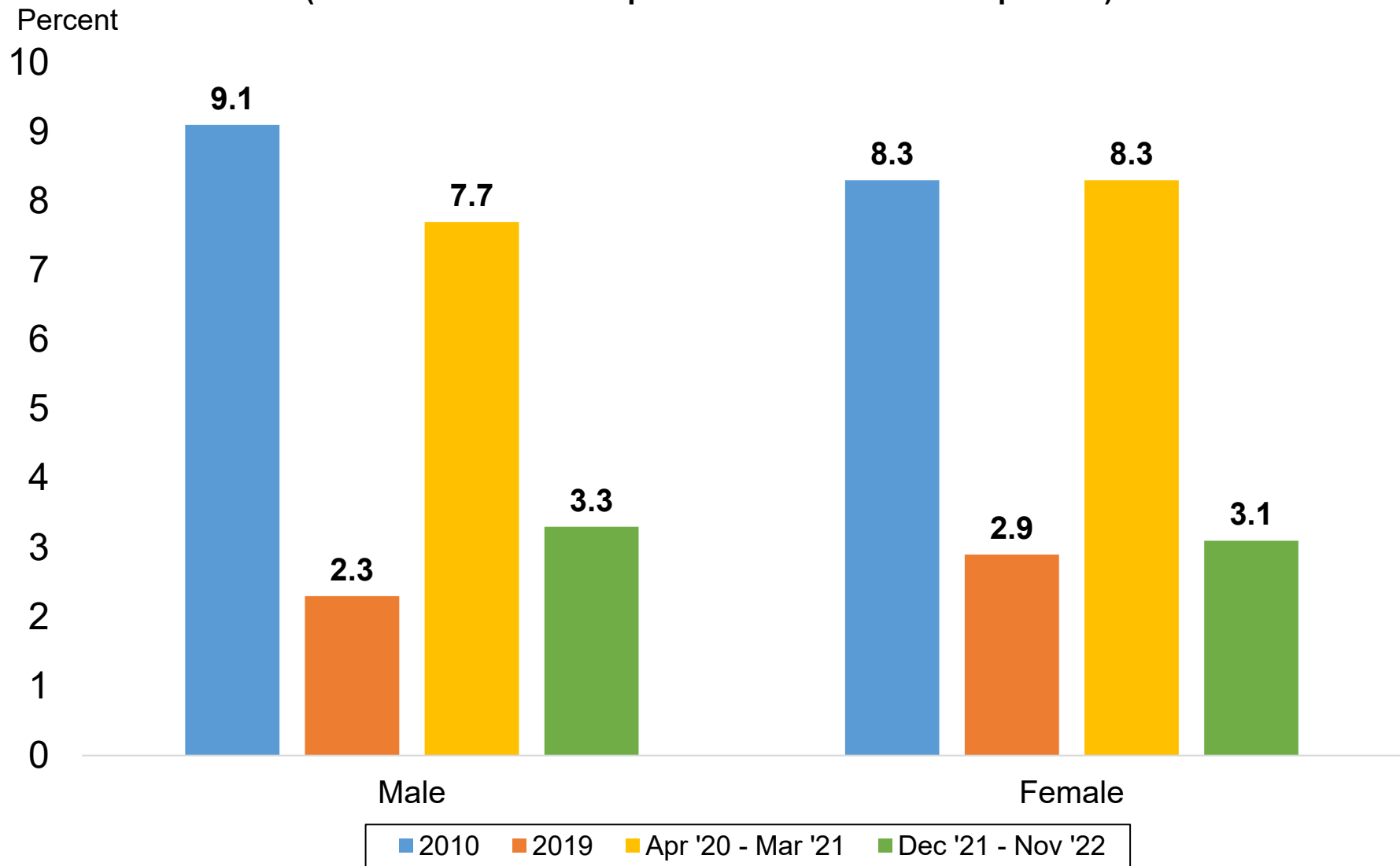


Source: Current Population Survey

Data not seasonally adjusted. Involuntary part-time workers are those individuals who are working part-time hours (34 hours or less), but prefer full-time hours (35+ hours).

*Average through the first eleven months of 2022.

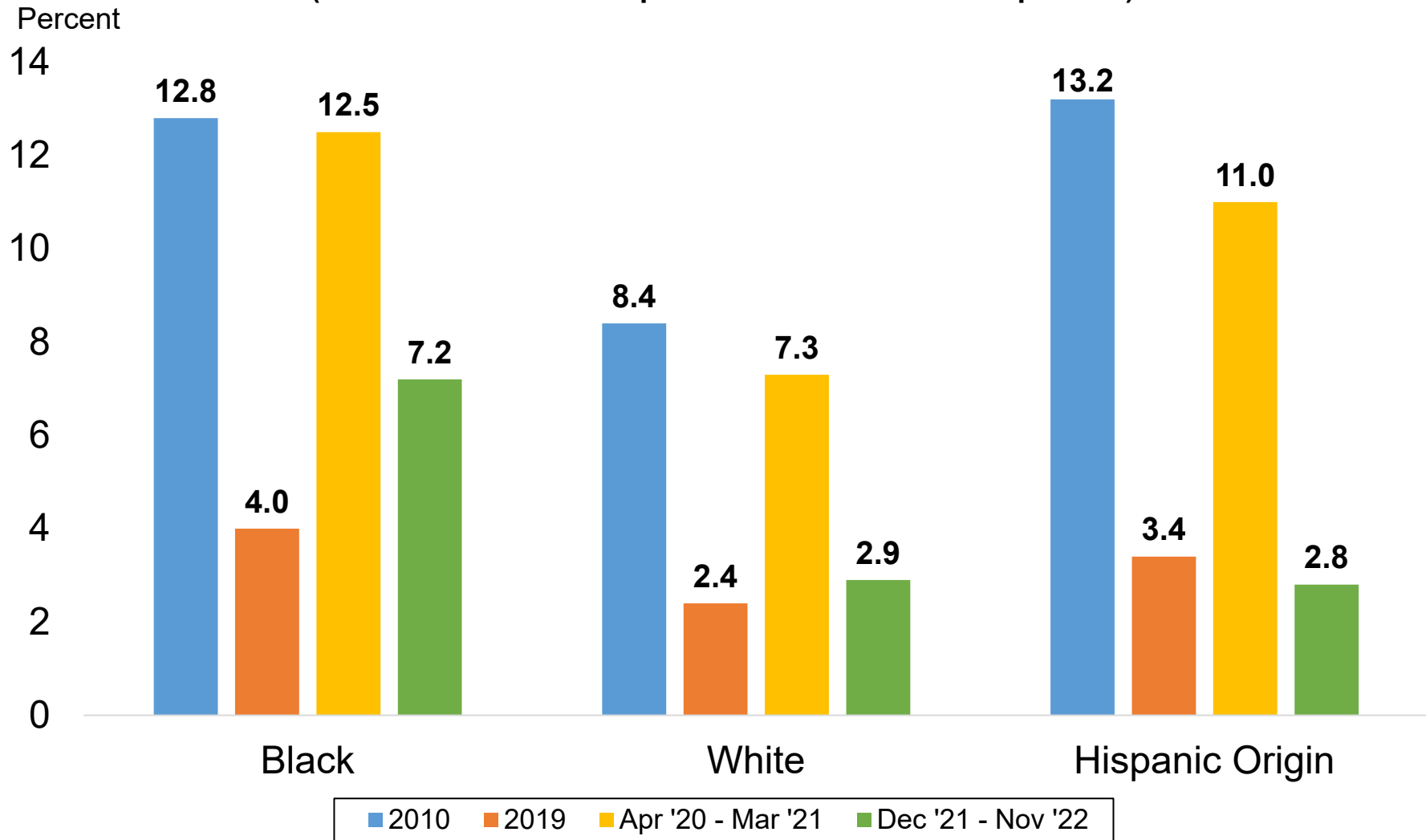
Unemployment Rates by Gender (Most recent 12-month period available vs. select periods)



Source: Current Population Survey

Data not seasonally adjusted. Unemployment rates by gender for individuals 16 years and older.

Unemployment Rates by Race & Ethnicity (Most recent 12-month period available vs. select periods)

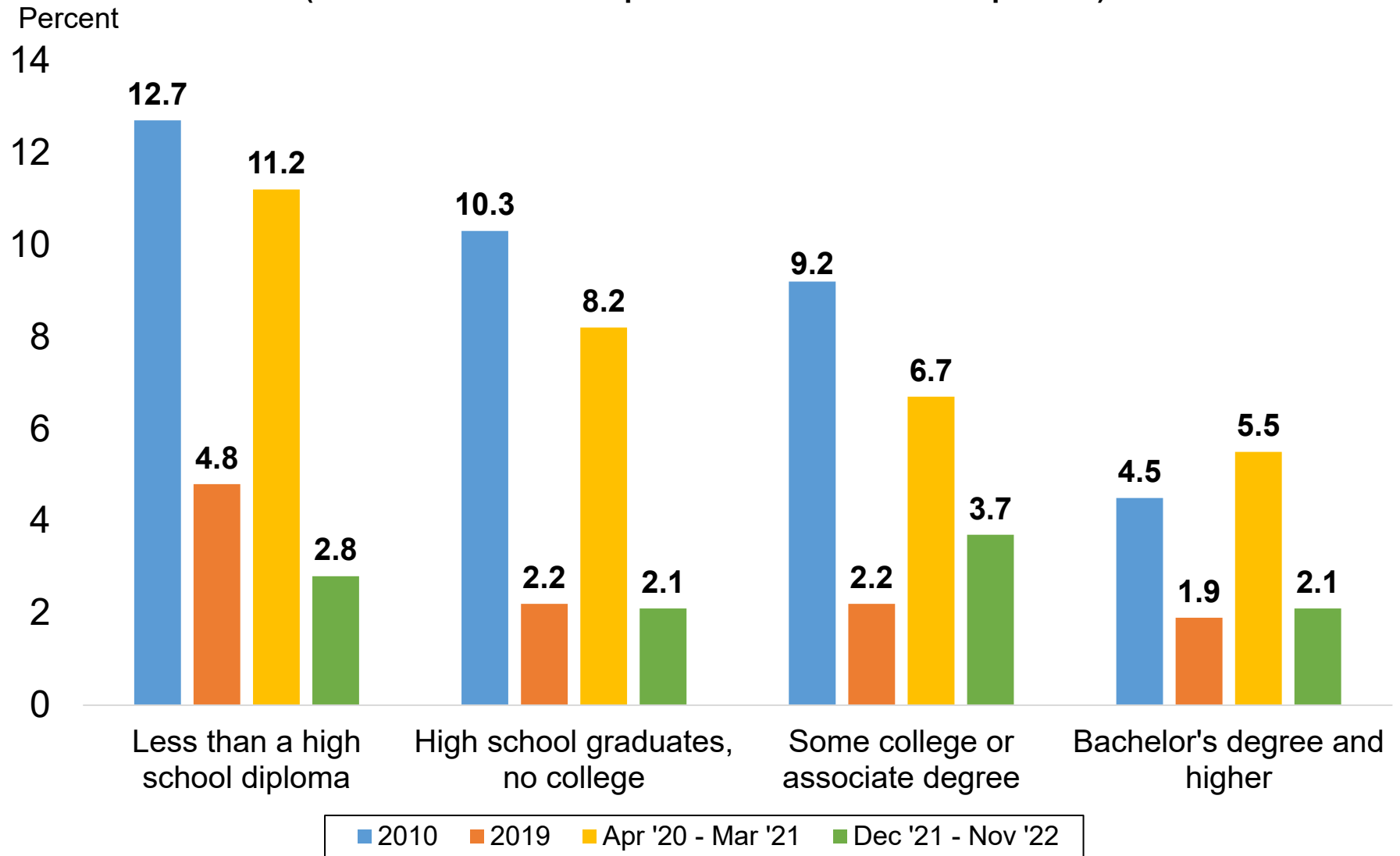


Source: Current Population Survey

Data not seasonally adjusted. Other race categories excluded due to small sample size. Hispanic origin category is not mutually exclusive (i.e. hispanic and non-hispanic ethnicities are represented in both race categories).

Unemployment Rates by Educational Attainment

(Most recent 12-month period available vs. select periods)

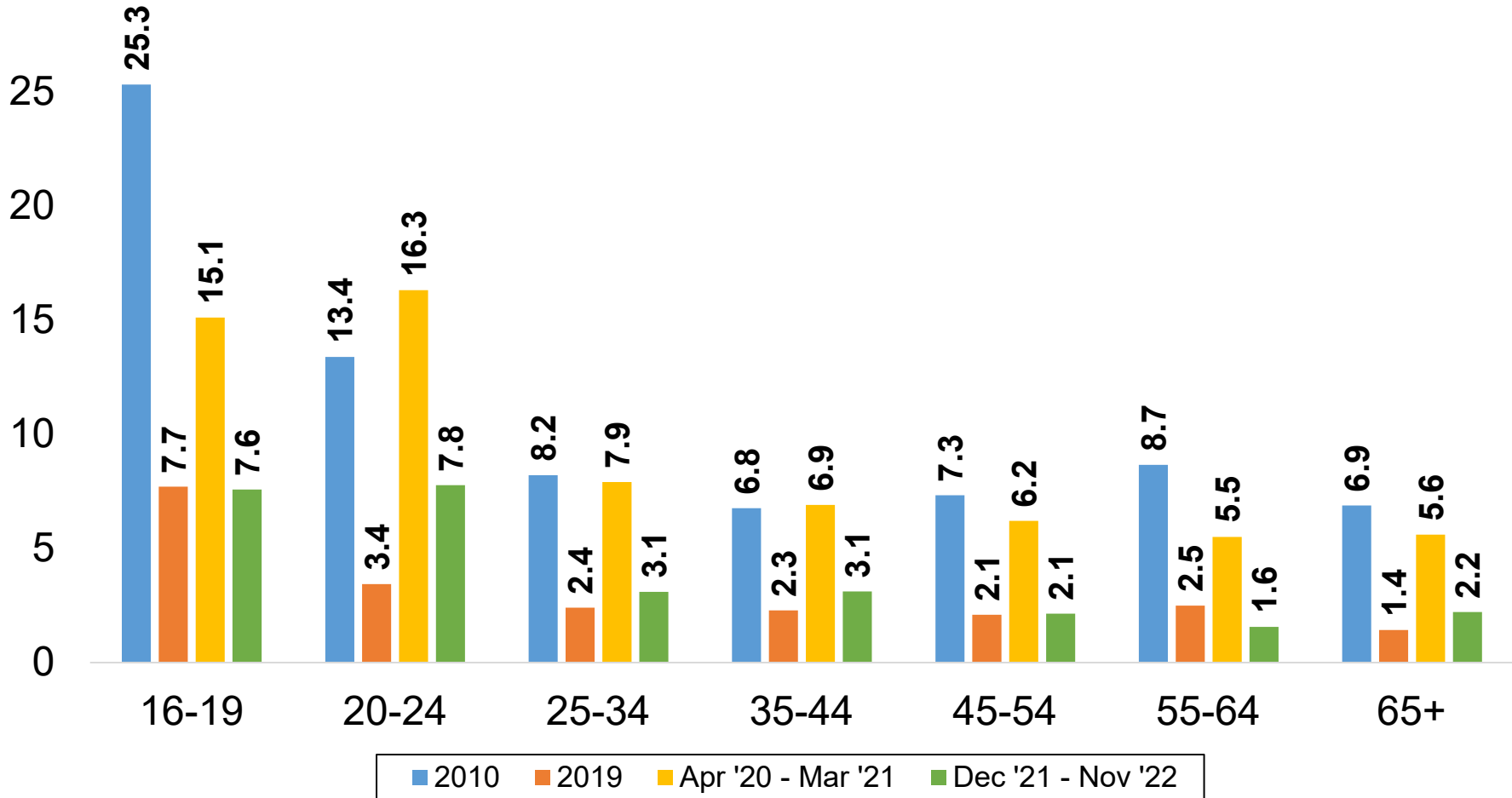


Source: Current Population Survey

Data not seasonally adjusted. Unemployment rates by educational attainment for individuals 25 years and over.

Unemployment Rates by Age Group (Most recent 12-month period available vs. select periods)

Percent
30



Source: Current Population Survey
Data not seasonally adjusted.

Colorado Labor Force Participation Rates and Employment-to-Population Ratios, Ages 25 to 54

(Most recent 12-month period available vs. select years)

Percent

88

86

84

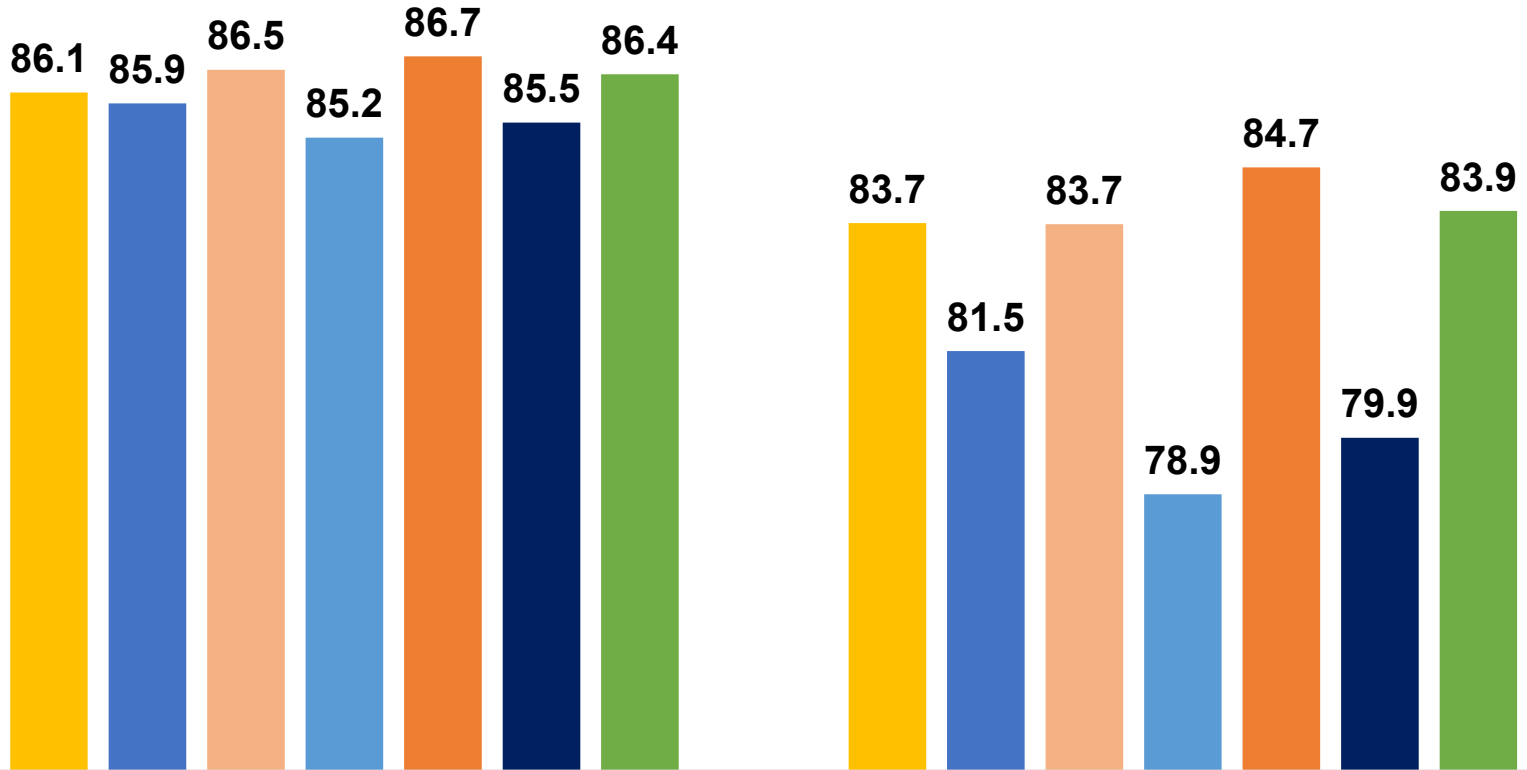
82

80

78

76

74



Labor Force Participation Rate

Employment-Population Ratio

■ 2001 ■ 2003 ■ 2006 ■ 2010 ■ 2019 ■ 2020 ■ Dec '21 - Nov '22

Source: Current Population Survey

Data not seasonally adjusted.

LABOR FORCE SUMMARY
COLORADO

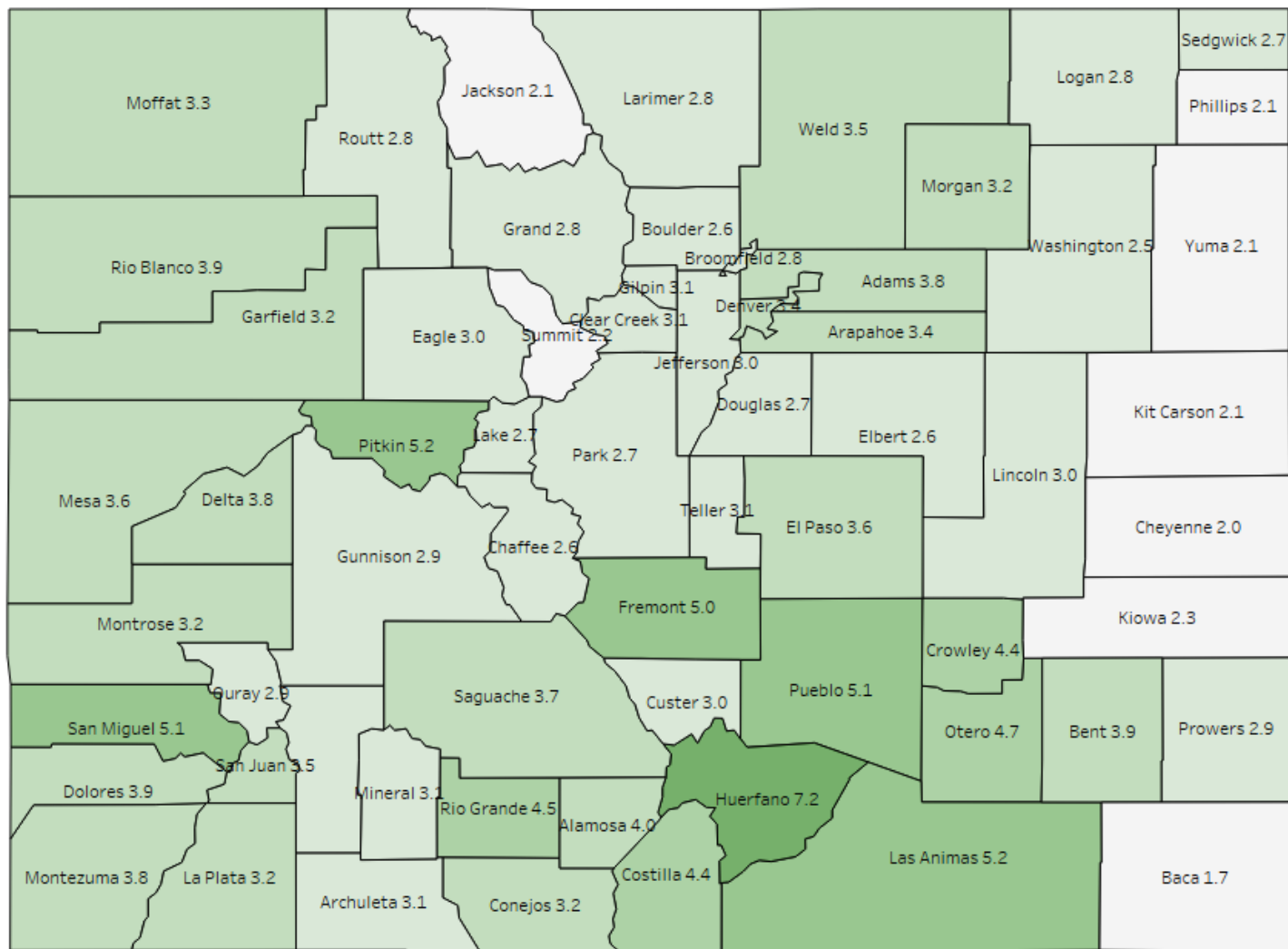
Preliminary Estimates for November 2022

LABOR FORCE DATA (VALUES IN THOUSANDS)					
SEASONALLY ADJUSTED:				Change from last:	
	Nov-22	Oct-22	Nov-21	Month	Year
Total Civilian Labor Force	3,252.1	3,256.8	3,170.9	-4.7	81.2
Unemployment	113.6	116.3	137.6	-2.7	-23.9
Unemployment Rate (%)	3.5	3.6	4.3	-0.1	-0.8
Employment	3,138.4	3,140.5	3,033.3	-2.0	105.1
UNADJUSTED FOR SEASONALITY:				Change from last:	
	Nov-22	Oct-22	Nov-21	Month	Year
Total Civilian Labor Force	3,256.9	3,260.9	3,184.7	-4.0	72.2
Unemployment	107.7	114.2	125.1	-6.5	-17.5
Unemployment Rate (%)	3.3	3.5	3.9	-0.2	-0.6
Employment	3,149.2	3,146.7	3,059.6	2.5	89.7

WAGE AND SALARY EMPLOYMENT DATA (VALUES IN THOUSANDS)					
SEASONALLY ADJUSTED:				Change from last:	
	Nov-22	Oct-22	Nov-21	Month	Year
Mining & Logging	20.7	20.6	19.6	0.1	1.1
Construction	183.5	186.9	178.0	-3.4	5.5
Manufacturing	156.6	155.8	150.6	0.8	6.0
Trade, Transportation, & Utilities	502.3	502.9	491.2	-0.6	11.1
Information	78.9	78.0	77.3	0.9	1.6
Financial Activities	178.5	176.5	179.2	2.0	-0.7
Professional & Business Services	496.1	493.9	464.9	2.2	31.2
Educational & Health Services	364.7	361.9	348.7	2.8	16.0
Leisure & Hospitality	343.6	346.2	331.4	-2.6	12.2
Other Services	122.8	123.0	115.9	-0.2	6.9
Government	454.2	451.9	441.7	2.3	12.5
TOTAL NONAG	2,901.9	2,897.6	2,798.5	4.3	103.4
Labor Disputants	0.0	0.0	0.0	0.0	0.0
UNADJUSTED FOR SEASONALITY:				Change from last:	
	Nov-22	Oct-22	Nov-21	Month	Year
Mining & Logging	21.0	20.8	19.8	0.2	1.2
Construction	183.1	189.8	178.4	-6.7	4.7
Manufacturing	156.9	156.1	150.8	0.8	6.1
Trade, Transportation, & Utilities	507.6	500.4	498.0	7.2	9.6
Information	79.0	78.0	77.4	1.0	1.6
Financial Activities	178.6	176.3	178.9	2.3	-0.3
Professional & Business Services	496.1	498.1	464.6	-2.0	31.5
Educational & Health Services	365.7	363.6	349.1	2.1	16.6
Leisure & Hospitality	330.5	336.5	319.3	-6.0	11.2
Other Services	122.2	123.9	115.3	-1.7	6.9
Government	461.8	459.3	448.5	2.5	13.3
TOTAL NONAG	2,902.5	2,902.8	2,800.1	-0.3	102.4
Labor Disputants	0.0	0.0	0.0	0.0	0.0

Source: Colorado Department of Labor & Employment; Bureau of Labor Statistics

County Unemployment Rates November 2022



Not Seasonally Adjusted Labor Force

	November 2022				October 2022			
	Labor Force	Employment	Unemployment	Rate	Labor force	Employment	Unemployment	Rate
Colorado	3,256,907	3,149,229	107,678	3.3	3,260,886	3,146,723	114,163	3.5
Metropolitan Statistical Area								
Boulder	205,804	200,359	5,445	2.6	205,000	199,337	5,663	2.8
Colorado Springs	375,228	361,847	13,381	3.6	373,454	359,231	14,223	3.8
Denver-Aurora-Lakewood	1,755,937	1,698,556	57,381	3.3	1,747,905	1,686,380	61,525	3.5
Fort Collins	214,216	208,157	6,059	2.8	215,371	209,055	6,316	2.9
Grand Junction	79,038	76,199	2,839	3.6	78,876	75,894	2,982	3.8
Greeley	169,859	163,951	5,908	3.5	171,311	165,002	6,309	3.7
Pueblo	79,618	75,562	4,056	5.1	79,428	75,064	4,364	5.5
Counties								
Adams	287,068	276,239	10,829	3.8	286,470	274,832	11,638	4.1
Alamosa	8,542	8,197	345	4.0	8,874	8,532	342	3.9
Arapahoe	382,389	369,465	12,924	3.4	380,398	366,457	13,941	3.7
Archuleta	7,128	6,909	219	3.1	7,462	7,233	229	3.1
Baca	1,996	1,962	34	1.7	2,208	2,172	36	1.6
Bent	1,870	1,797	73	3.9	2,044	1,971	73	3.6
Boulder	205,804	200,359	5,445	2.6	205,000	199,337	5,663	2.8
Broomfield	43,225	41,997	1,228	2.8	42,965	41,669	1,296	3.0
Chaffee	10,315	10,044	271	2.6	10,451	10,147	304	2.9
Cheyenne	1,051	1,030	21	2.0	1,163	1,142	21	1.8
Clear Creek	6,259	6,068	191	3.1	6,255	6,030	225	3.6
Conejos	4,043	3,913	130	3.2	4,324	4,183	141	3.3
Costilla	1,857	1,775	82	4.4	1,961	1,877	84	4.3
Crowley	1,414	1,352	62	4.4	1,457	1,393	64	4.4
Custer	2,477	2,402	75	3.0	2,534	2,458	76	3.0
Delta	13,473	12,964	509	3.8	14,208	13,695	513	3.6
Denver	444,649	429,431	15,218	3.4	442,539	426,002	16,537	3.7
Dolores	1,142	1,097	45	3.9	1,220	1,182	38	3.1
Douglas	211,388	205,614	5,774	2.7	209,968	204,039	5,929	2.8
Eagle	36,136	35,059	1,077	3.0	37,018	35,976	1,042	2.8
El Paso	361,696	348,733	12,963	3.6	360,036	346,244	13,792	3.8
Elbert	16,093	15,675	418	2.6	16,321	15,894	427	2.6
Fremont	15,404	14,632	772	5.0	15,591	14,765	826	5.3
Garfield	31,106	30,112	994	3.2	31,684	30,689	995	3.1
Gilpin	4,007	3,884	123	3.1	3,988	3,856	132	3.3
Grand	9,506	9,236	270	2.8	9,606	9,325	281	2.9
Gunnison	11,435	11,098	337	2.9	11,995	11,694	301	2.5
Hinsdale	447	433	14	3.1	495	481	14	2.8
Huerfano	2,566	2,382	184	7.2	2,707	2,510	197	7.3
Jackson	911	892	19	2.1	1,036	1,016	20	1.9
Jefferson	349,051	338,696	10,355	3.0	347,191	336,137	11,054	3.2
Kiowa	817	798	19	2.3	949	932	17	1.8
Kit Carson	3,891	3,811	80	2.1	4,296	4,208	88	2.0
La Plata	31,205	30,218	987	3.2	32,120	31,113	1,007	3.1
Lake	5,108	4,972	136	2.7	5,123	4,983	140	2.7
Larimer	214,216	208,157	6,059	2.8	215,371	209,055	6,316	2.9
Las Animas	6,281	5,952	329	5.2	6,522	6,165	357	5.5
Lincoln	2,202	2,136	66	3.0	2,366	2,301	65	2.7
Logan	10,491	10,200	291	2.8	10,953	10,629	324	3.0
Mesa	79,038	76,199	2,839	3.6	78,876	75,894	2,982	3.8
Mineral	388	376	12	3.1	390	376	14	3.6
Moffat	6,870	6,642	228	3.3	7,010	6,794	216	3.1
Montezuma	13,413	12,909	504	3.8	13,696	13,195	501	3.7
Montrose	22,536	21,807	729	3.2	23,185	22,433	752	3.2
Morgan	15,423	14,927	496	3.2	16,394	15,838	556	3.4
Otero	7,973	7,599	374	4.7	8,401	7,988	413	4.9
Ouray	2,836	2,755	81	2.9	3,056	2,982	74	2.4
Park	11,808	11,487	321	2.7	11,810	11,464	346	2.9
Phillips	2,328	2,279	49	2.1	2,665	2,613	52	2.0
Pitkin	10,909	10,340	569	5.2	11,004	10,474	530	4.8
Prowers	6,106	5,928	178	2.9	6,546	6,364	182	2.8
Pueblo	79,618	75,562	4,056	5.1	79,428	75,064	4,364	5.5
Rio Blanco	2,755	2,647	108	3.9	2,924	2,813	111	3.8
Rio Grande	5,159	4,929	230	4.5	5,631	5,383	248	4.4
Routt	15,510	15,074	436	2.8	15,724	15,285	439	2.8
Saguache	3,349	3,226	123	3.7	3,641	3,524	117	3.2
San Juan	597	576	21	3.5	719	705	14	1.9
San Miguel	6,127	5,817	310	5.1	6,532	6,348	184	2.8
Sedgwick	1,104	1,074	30	2.7	1,230	1,203	27	2.2
Summit	23,189	22,675	514	2.2	21,487	20,914	573	2.7
Teller	13,532	13,114	418	3.1	13,418	12,987	431	3.2
Washington	2,556	2,492	64	2.5	2,875	2,810	65	2.3
Weld	169,859	163,951	5,908	3.5	171,311	165,002	6,309	3.7
Yuma	5,263	5,152	111	2.1	6,065	5,948	117	1.9

All estimates made in cooperation with the U.S. Department of Labor, Bureau of Labor Statistics and adjusted to Current Population Survey data. Estimates have been revised to incorporate population data from the American Community Survey.
 Colorado Department of Labor and Employment 2022

Not Seasonally Adjusted Labor Force

	November 2022				November 2021			
	Labor Force	Employment	Unemployment	Rate	Labor force	Employment	Unemployment	Rate
Colorado	3,256,907	3,149,229	107,678	3.3	3,184,714	3,059,572	125,142	3.9
Metropolitan Statistical Area								
Boulder	205,804	200,359	5,445	2.6	199,137	193,065	6,072	3.0
Colorado Springs	375,228	361,847	13,381	3.6	365,880	350,771	15,109	4.1
Denver-Aurora-Lakewood	1,755,937	1,698,556	57,381	3.3	1,702,484	1,634,389	68,095	4.0
Fort Collins	214,216	208,157	6,059	2.8	209,056	202,138	6,918	3.3
Grand Junction	79,038	76,199	2,839	3.6	78,215	75,009	3,206	4.1
Greeley	169,859	163,951	5,908	3.5	166,758	159,847	6,911	4.1
Pueblo	79,618	75,562	4,056	5.1	78,042	73,323	4,719	6.0
Counties								
Adams	287,068	276,239	10,829	3.8	278,801	265,908	12,893	4.6
Alamosa	8,542	8,197	345	4.0	8,729	8,386	343	3.9
Arapahoe	382,389	369,465	12,924	3.4	371,159	355,399	15,760	4.2
Archuleta	7,128	6,909	219	3.1	7,412	7,142	270	3.6
Baca	1,996	1,962	34	1.7	2,132	2,094	38	1.8
Bent	1,870	1,797	73	3.9	1,870	1,783	87	4.7
Boulder	205,804	200,359	5,445	2.6	199,137	193,065	6,072	3.0
Broomfield	43,225	41,997	1,228	2.8	41,706	40,374	1,332	3.2
Chaffee	10,315	10,044	271	2.6	10,359	10,051	308	3.0
Cheyenne	1,051	1,030	21	2.0	1,112	1,091	21	1.9
Clear Creek	6,259	6,068	191	3.1	6,090	5,843	247	4.1
Conejos	4,043	3,913	130	3.2	4,171	4,031	140	3.4
Costilla	1,857	1,775	82	4.4	1,900	1,815	85	4.5
Crowley	1,414	1,352	62	4.4	1,482	1,421	61	4.1
Custer	2,477	2,402	75	3.0	2,346	2,272	74	3.2
Delta	13,473	12,964	509	3.8	14,276	13,714	562	3.9
Denver	444,649	429,431	15,218	3.4	431,732	413,079	18,653	4.3
Dolores	1,142	1,097	45	3.9	1,194	1,148	46	3.9
Douglas	211,388	205,614	5,774	2.7	203,782	197,778	6,004	2.9
Eagle	36,136	35,059	1,077	3.0	35,581	34,325	1,256	3.5
El Paso	361,696	348,733	12,963	3.6	352,681	338,051	14,630	4.1
Elbert	16,093	15,675	418	2.6	15,660	15,216	444	2.8
Fremont	15,404	14,632	772	5.0	15,930	15,077	853	5.4
Garfield	31,106	30,112	994	3.2	31,651	30,552	1,099	3.5
Gilpin	4,007	3,884	123	3.1	3,909	3,742	167	4.3
Grand	9,506	9,236	270	2.8	9,319	9,033	286	3.1
Gunnison	11,435	11,098	337	2.9	11,543	11,215	328	2.8
Hinsdale	447	433	14	3.1	413	401	12	2.9
Huerfano	2,566	2,382	184	7.2	2,644	2,476	168	6.4
Jackson	911	892	19	2.1	963	939	24	2.5
Jefferson	349,051	338,696	10,355	3.0	338,199	325,945	12,254	3.6
Kiowa	817	798	19	2.3	913	891	22	2.4
Kit Carson	3,891	3,811	80	2.1	4,212	4,110	102	2.4
La Plata	31,205	30,218	987	3.2	32,096	30,932	1,164	3.6
Lake	5,108	4,972	136	2.7	5,034	4,865	169	3.4
Larimer	214,216	208,157	6,059	2.8	209,056	202,138	6,918	3.3
Las Animas	6,281	5,952	329	5.2	6,576	6,236	340	5.2
Lincoln	2,202	2,136	66	3.0	2,348	2,276	72	3.1
Logan	10,491	10,200	291	2.8	11,166	10,813	353	3.2
Mesa	79,038	76,199	2,839	3.6	78,215	75,009	3,206	4.1
Mineral	388	376	12	3.1	416	401	15	3.6
Moffat	6,870	6,642	228	3.3	7,263	7,016	247	3.4
Montezuma	13,413	12,909	504	3.8	13,536	12,993	543	4.0
Montrose	22,536	21,807	729	3.2	22,814	21,984	830	3.6
Morgan	15,423	14,927	496	3.2	16,275	15,680	595	3.7
Otero	7,973	7,599	374	4.7	8,401	8,008	393	4.7
Ouray	2,836	2,755	81	2.9	2,718	2,627	91	3.3
Park	11,808	11,487	321	2.7	11,446	11,105	341	3.0
Phillips	2,328	2,279	49	2.1	2,472	2,418	54	2.2
Pitkin	10,909	10,340	569	5.2	11,054	10,473	581	5.3
Prowers	6,106	5,928	178	2.9	6,332	6,123	209	3.3
Pueblo	79,618	75,562	4,056	5.1	78,042	73,323	4,719	6.0
Rio Blanco	2,755	2,647	108	3.9	2,939	2,810	129	4.4
Rio Grande	5,159	4,929	230	4.5	5,448	5,167	281	5.2
Routt	15,510	15,074	436	2.8	15,951	15,435	516	3.2
Saguache	3,349	3,226	123	3.7	3,491	3,337	154	4.4
San Juan	597	576	21	3.5	539	523	16	3.0
San Miguel	6,127	5,817	310	5.1	5,575	5,290	285	5.1
Sedgwick	1,104	1,074	30	2.7	1,165	1,129	36	3.1
Summit	23,189	22,675	514	2.2	22,998	22,342	656	2.9
Teller	13,532	13,114	418	3.1	13,199	12,720	479	3.6
Washington	2,556	2,492	64	2.5	2,802	2,729	73	2.6
Weld	169,859	163,951	5,908	3.5	166,758	159,847	6,911	4.1
Yuma	5,263	5,152	111	2.1	5,582	5,456	126	2.3

All estimates made in cooperation with the U.S. Department of Labor, Bureau of Labor Statistics and adjusted to Current Population Survey data. Estimates have been revised to incorporate population data from the American Community Survey.
 Colorado Department of Labor and Employment 2022



Colorado LMI Data Overview

November 2022

Employment

	Nov-22	Oct-22	Nov-21	Change from previous:	
				Period	Year
Nonfarm Wage and Salary Employment (SA)	2,901,900	2,897,600	2,798,500	4,300	103,400
Total Resident Employment (SA)	3,138,400	3,140,500	3,033,300	(2,100)	105,100
	Q2 2022	Q1 2022	Q2 2021		
UI Covered Total Employment	2,821,406	2,756,407	2,686,561	64,999	134,845
UI Covered Private Employment	2,389,121	2,332,408	2,262,701	56,713	126,420

Unemployment

	Nov-22	Oct-22	Nov-21	Change from previous:	
				Period	Year
Unemployment (SA)	113,600	116,300	137,600	(2,700)	(24,000)
Percent Unemployed (SA)	3.5%	3.6%	4.3%	(0.1)	(0.8)
	Oct-22	Sep-22	Oct-21		
Initial Claims	11,650	9,572	16,667	2,078	(5,017)
Continued Weeks Claimed	84,493	80,326	134,068	4,167	(49,575)

Wages and Earnings

	Q2 2022	Q1 2022	Q2 2021	Change from previous:	
				Period	Year
Total Average Weekly Wage	\$1,361	\$1,455	\$1,283	(\$94)	\$78
Private Average Weekly Wage	\$1,379	\$1,494	\$1,298	(\$115)	\$81
	Nov-22	Oct-22	Nov-21		
Average Weekly Earnings (Construction)	\$1,173.76	\$1,220.70	\$1,221.90	(\$46.94)	(\$48.14)
Average Weekly Earnings (Manufacturing)	\$1,106.43	\$1,123.59	\$1,060.08	(\$17.16)	\$46.35

CO Unemployment Insurance Trust Fund

	Oct-22	Sep-22	Oct-21	Change from previous:	
				Period	Year
Employer Contributions	\$63,992,804	\$3,950,398	\$28,738,091	\$60,042,405	\$35,254,713
Benefits Paid	\$31,616,277	\$29,908,426	\$44,104,608	\$1,707,851	(\$12,488,331)
Average Weekly Benefit Amount	\$507.45	\$504.09	\$403.28	\$3.36	\$104.17
Duration (weeks)	11.86	11.16	27.85	0.70	(15.99)
Outstanding Title XII Loan Balance	\$33,089,861	\$33,089,861	\$1,014,167,919	\$0	(981,078,058)

Consumer Price Index for All Urban Consumers

Not seasonally adjusted	Nov-22	Sep-22	Nov-21	% Change from previous:	
				Period	Year
Denver-Aurora-Lakewood	309.655	308.211	289.621	0.5%	6.9%
US City Average	297.711	296.808	277.948	0.3%	7.1%

(Most current data available for all categories)