

PRESS RELEASE

Colorado Department of Labor and Employment • 633 17th Street, Suite 1200 • Denver, CO 80202 • (303) 318-8004 • Fax: (303) 318-8070

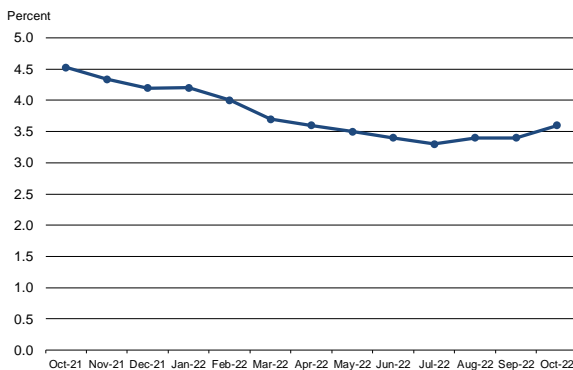
For Immediate Release

Date: November 18, 2022/ 8:00 A.M.
Contact: Office of Government, Policy and Public Relations
Email: cdle_pr@state.co.us
Web: www.colmigateway.com

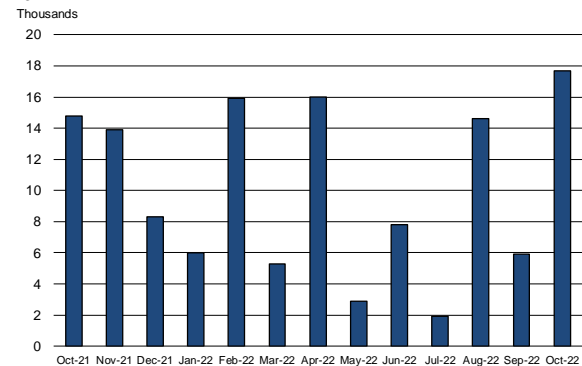
Colorado Employment Situation – October 2022

17,700 Nonfarm Payroll Jobs Added in October; Unemployment Rate Rises to 3.6%

Colorado unemployment rate, seasonally adjusted
October 2021 - October 2022



Colorado nonfarm payroll employment over-the-month
change, seasonally adjusted, October 2021 - October
2022



Household survey data

- According to the survey of households, Colorado's seasonally adjusted **unemployment rate** increased two-tenths of a percentage point in October to 3.6 percent. The **number of unemployed individuals** rose by 6,800 over the same time period to 116,400. Colorado's unemployment rate has ranged between 3.3 and 3.6 percent since April. The national unemployment rate also moved up by two-tenths of a percentage point to 3.7 percent, which translates to approximately 6.1 million unemployed.
- Colorado's **labor force** increased by 1,900 in October to 3,256,900. The share of Coloradans participating in the labor force has remained steady at 69.4 percent for two consecutive months. The U.S. labor force participation rate was 62.2 percent in October, dropping one-tenth of a percentage point from the month prior.
- The **number of individuals employed** in Colorado declined by 5,000 in October to 3,140,400, which represents 66.9 percent of the state's 16+ population. The rate of 66.9 percent is almost two percentage points higher than a year ago and four-tenths of a percentage point higher than it was in February 2020. The national employment-to-population ratio was 60.0 percent in October and remains below its February 2020 level of 61.2 percent.

Establishment survey data

Employers in Colorado added 17,700 **nonfarm payroll jobs** from September to October for a total of 2,900,800 jobs, according to the survey of business establishments. Private sector payroll jobs increased 15,400 and government added 2,300 jobs. Over the past 30 months, Colorado has added 455,700 nonfarm payroll jobs, compared to losses totaling 374,500 in March and April 2020. That translates to a **job recovery rate** of 121.7 percent, which exceeds the U.S. rate of 103.7 percent.

Since May 2020, Colorado's **private sector** has grown by 449,500 jobs, compared to declines of 358,800 in early 2020. That translates to a **job recovery rate** of 125.3 percent and outpaces the U.S. rate of 106.3 percent.

Other highlights from the establishment survey:

- **September estimates** were revised up to 2,883,100, and the over the month change from August to September was a gain of 5,900 rather than the originally estimated increase of 5,600 (monthly revisions are based on additional responses from businesses and government agencies since the last published estimates).
- **Private industry sectors with significant job gains** in October were: professional and business services (~5,900), construction (~2,600), trade, transportation, and utilities (~2,000), educational and health services (~1,400), manufacturing (~1,300), and other services (~1,100). There were no industries with significant over the month declines.
- **Since October 2021**, nonfarm payroll jobs have increased 116,200, with the private sector growing by 104,800 and government adding 11,400 jobs. The largest **private sector job gains** were in professional and business services (~35,300), leisure and hospitality (~17,100), and educational and health services (~13,600). During that same period financial activities (~1,400) **payroll jobs declined**. Colorado's **rate of job growth** over the past year is 4.2 percent, outpacing the U.S. rate of 3.6 percent.
- Over the year, the **average workweek** for all Colorado employees on private nonfarm payrolls increased from 33.4 to 33.8 hours, while **average hourly earnings** grew from \$32.69 to \$35.27, two dollars and sixty-nine cents more than the national average hourly earnings of \$32.58.

###

All Colorado estimates from the establishment and household surveys, including greater geographic detail, are available at: <http://www.colmigateway.com>. Estimates for all states and the nation are available at: <http://www.bls.gov>.

For data visualizations, visit public.tableau.com/app/profile/cdle.lmi

The **November 2022 Colorado Employment Situation** will be released at 8:00 AM on Friday, December 16, 2022. The full schedule of release dates for calendar year 2022 estimates is available at www.colmigateway.com.

###

Technical Notes

This release provides information on industry employment and labor force statistics for October 2022, the most current estimates available from the Colorado Department of Labor and Employment. The reference period for the establishment and household surveys was the pay period or week that includes the 12th of the month.

The unemployment rate, labor force, labor force participation, total employment and the number of unemployed are based on a survey of households. The total employment estimate derived from this survey is intended to measure the number of people employed.

Nonfarm payroll jobs estimates are based on a survey of business establishments and government agencies, and are intended to measure the number of jobs, not the number of people employed. Other series based on this survey include private sector average weekly hours, average hourly earnings and average weekly earnings.

The business establishment survey covers about seven times the number of households surveyed and is therefore considered a more reliable indicator of economic conditions. Because the estimates are based on two separate surveys, one measuring jobs by worksite and the other measuring persons employed and unemployed by household, estimates based on these surveys may provide seemingly conflicting results.

###

Supplemental information available in following pages

OCTOBER 2022

EMPLOYMENT SITUATION SUPPLEMENTAL CHARTS

November 18, 2022

This briefing provides information on industry employment and labor force statistics, derived from surveys of business establishments and households. The reference period for these surveys is the pay period or week that includes the 12th of the month. The reference week for October was specifically October 9th – October 15th.

U.S. and Colorado Unemployment Rates Increase by Two-Tenths of a Percentage Point in October

Percent

15

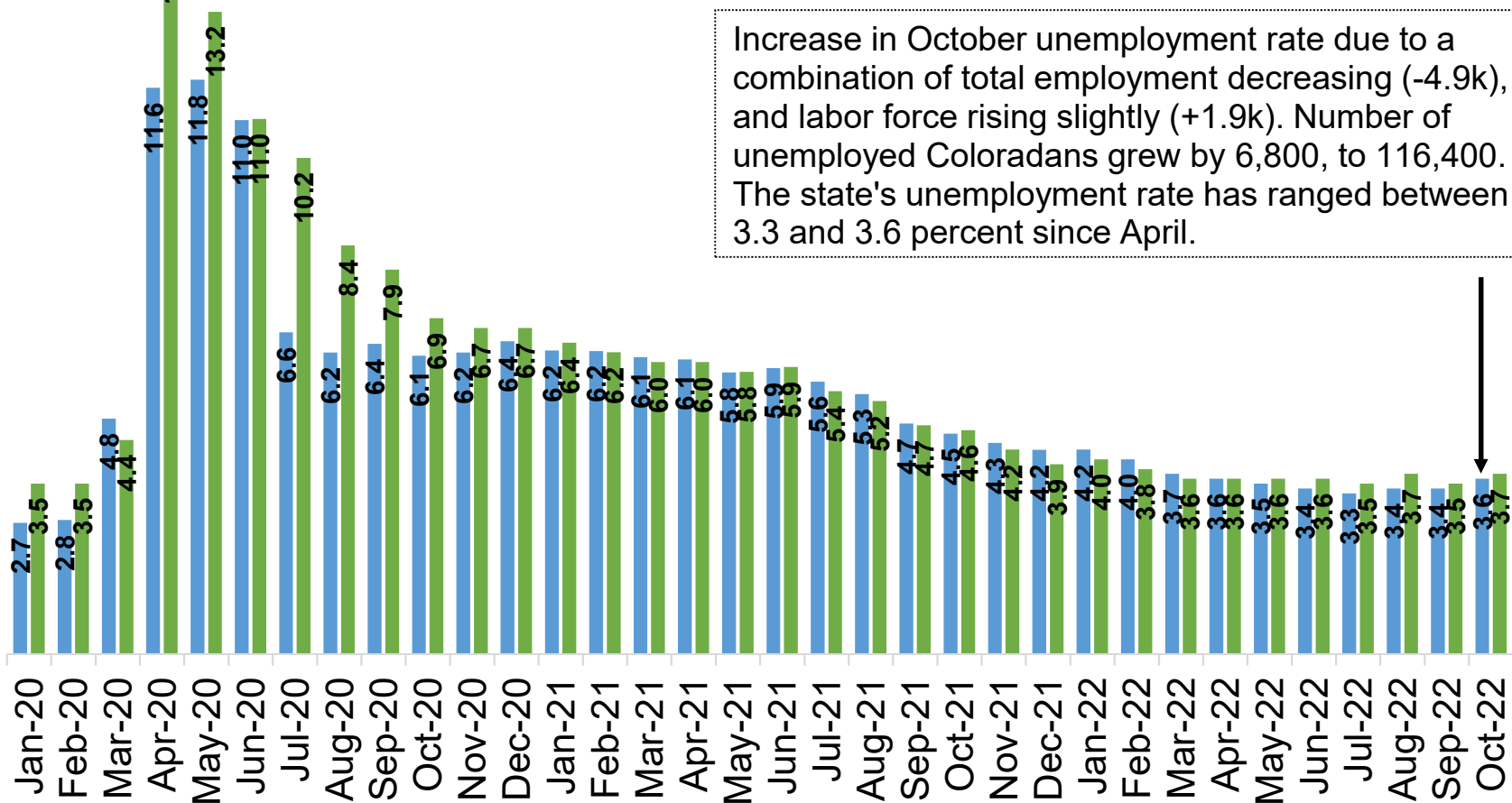
12

9

6

3

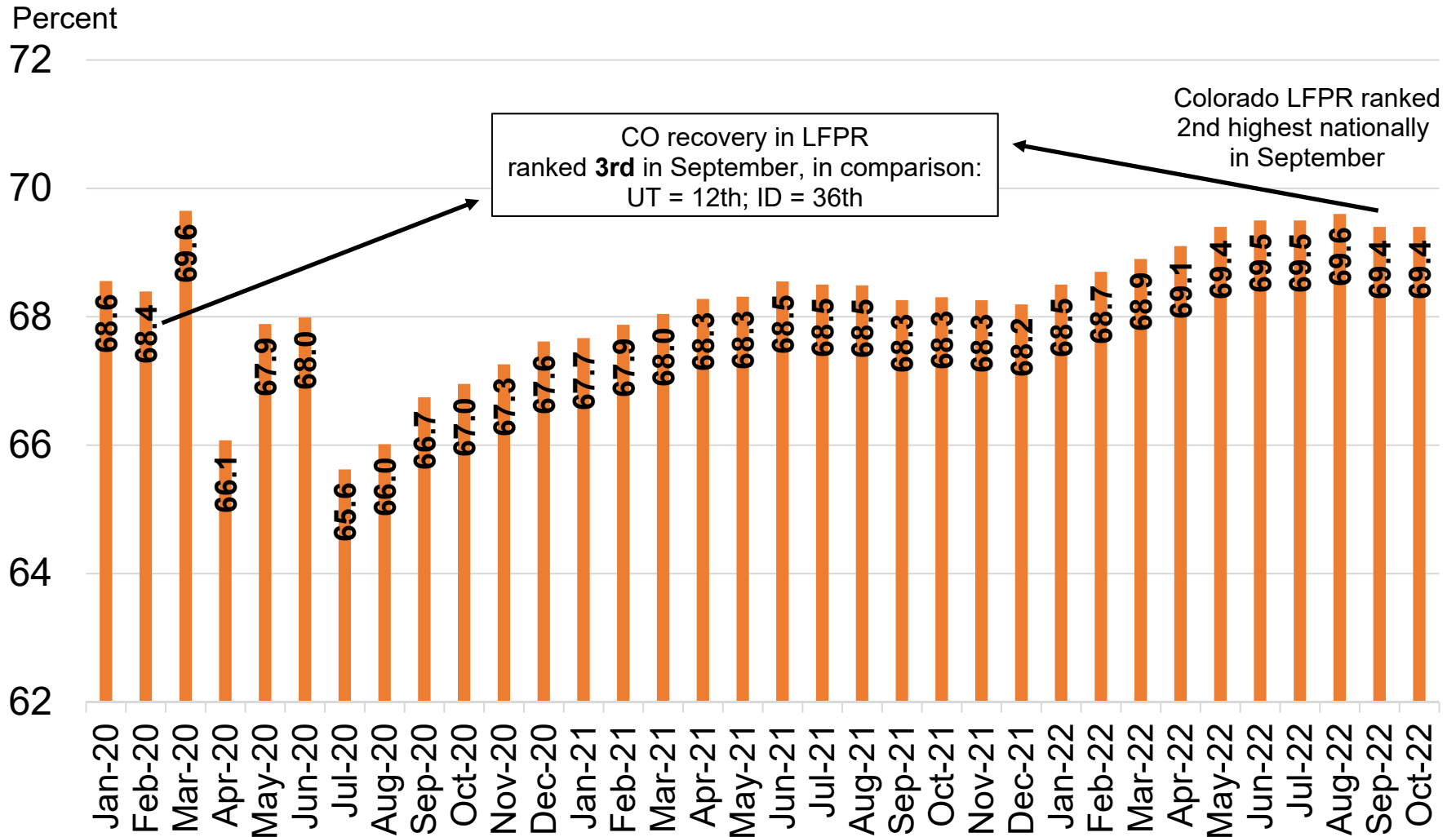
0



Source: Colorado Department of Labor and Employment; Bureau of Labor Statistics
Data seasonally adjusted

■ Colorado ■ U.S.

Colorado's Labor Force Participation Rate Flat in October

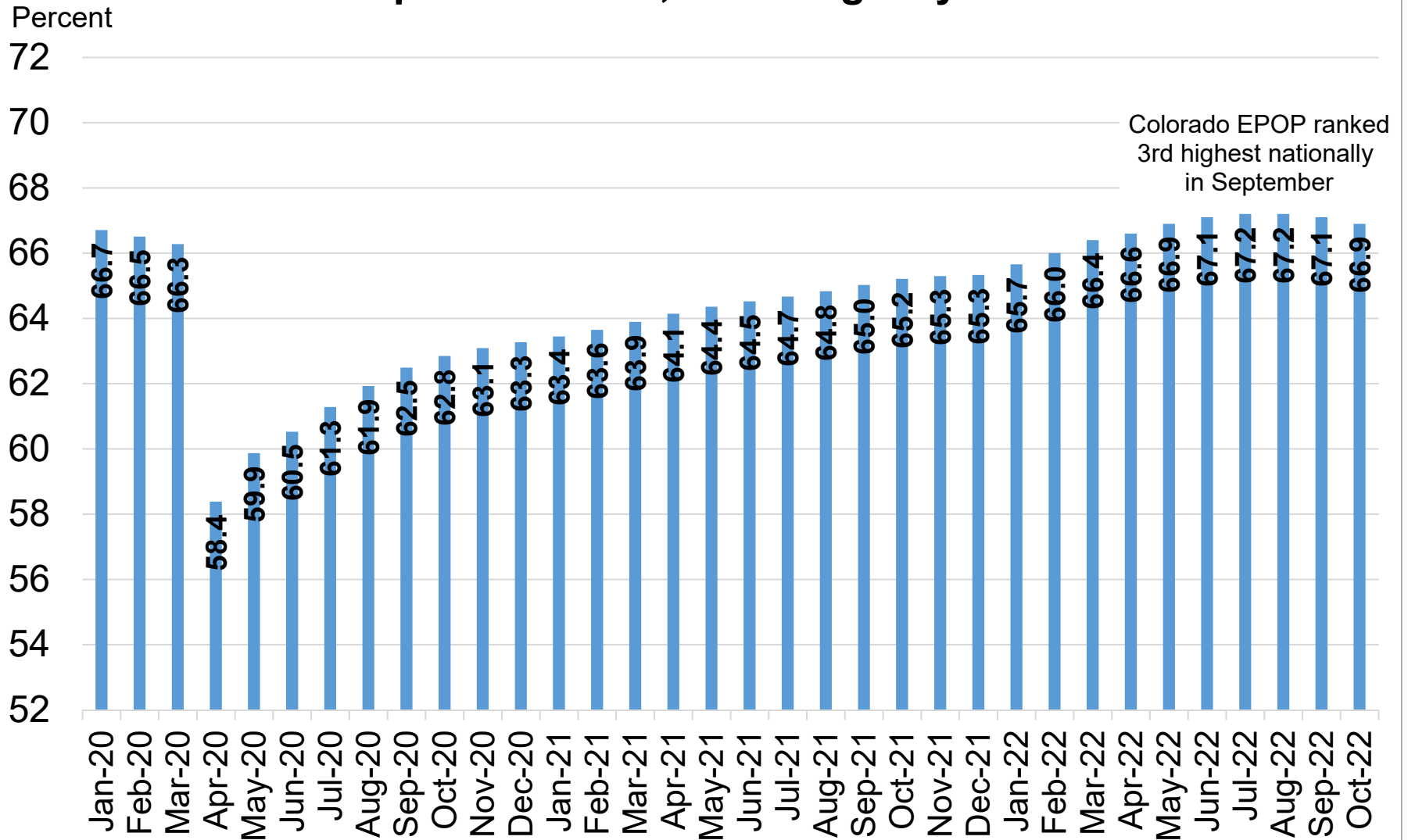


Source: Colorado Department of Labor and Employment; Bureau of Labor Statistics

Data seasonally adjusted. Estimates share of Colorado's 16+ population that is in the labor force in a given month.

For further information on labor force definitions, go here: <https://www.bls.gov/lau/laufaq.htm>

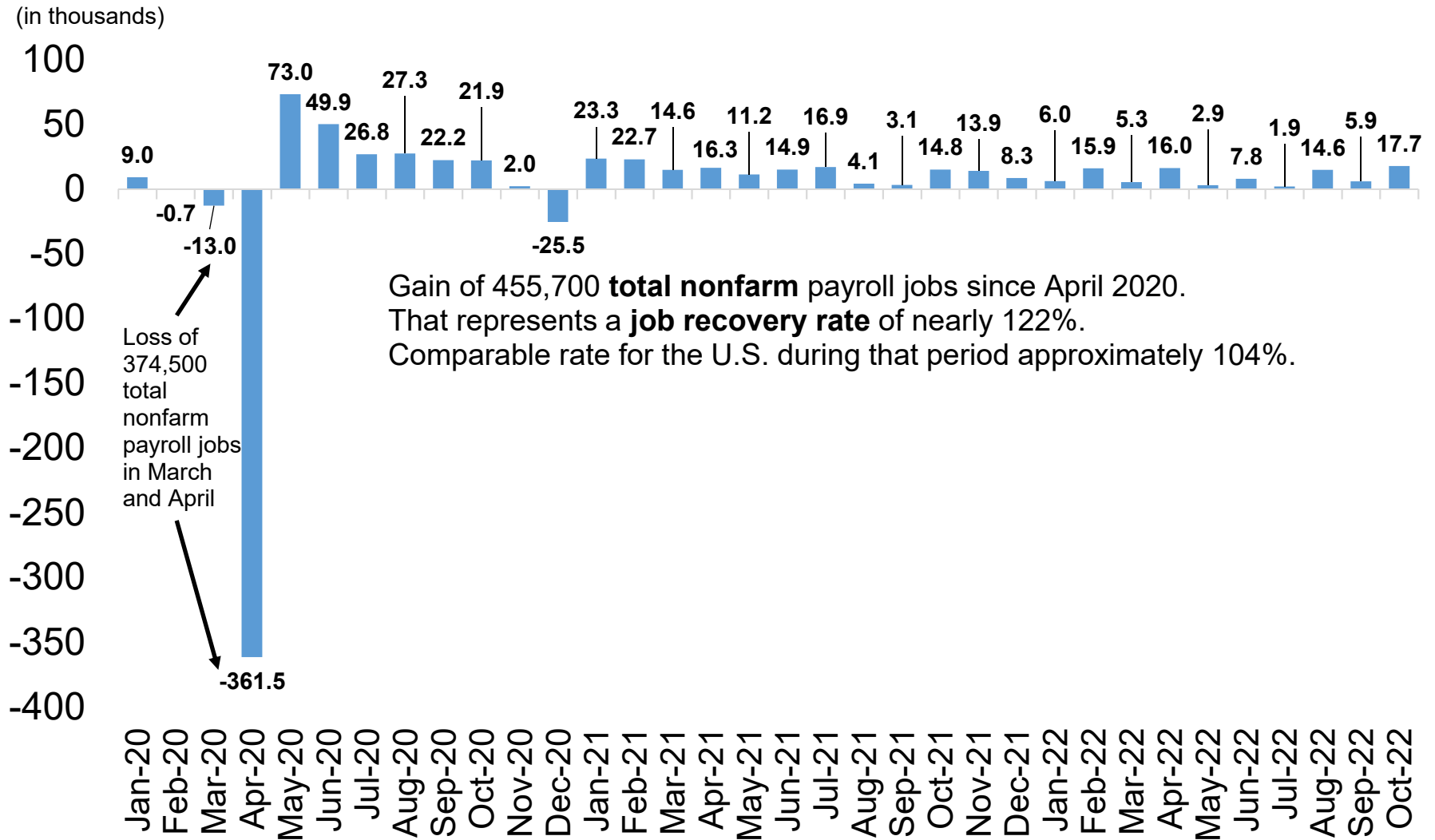
Colorado's Employment-to-Population Ratio Drops in October, Matching May Rate



Source: Colorado Department of Labor and Employment; Bureau of Labor Statistics

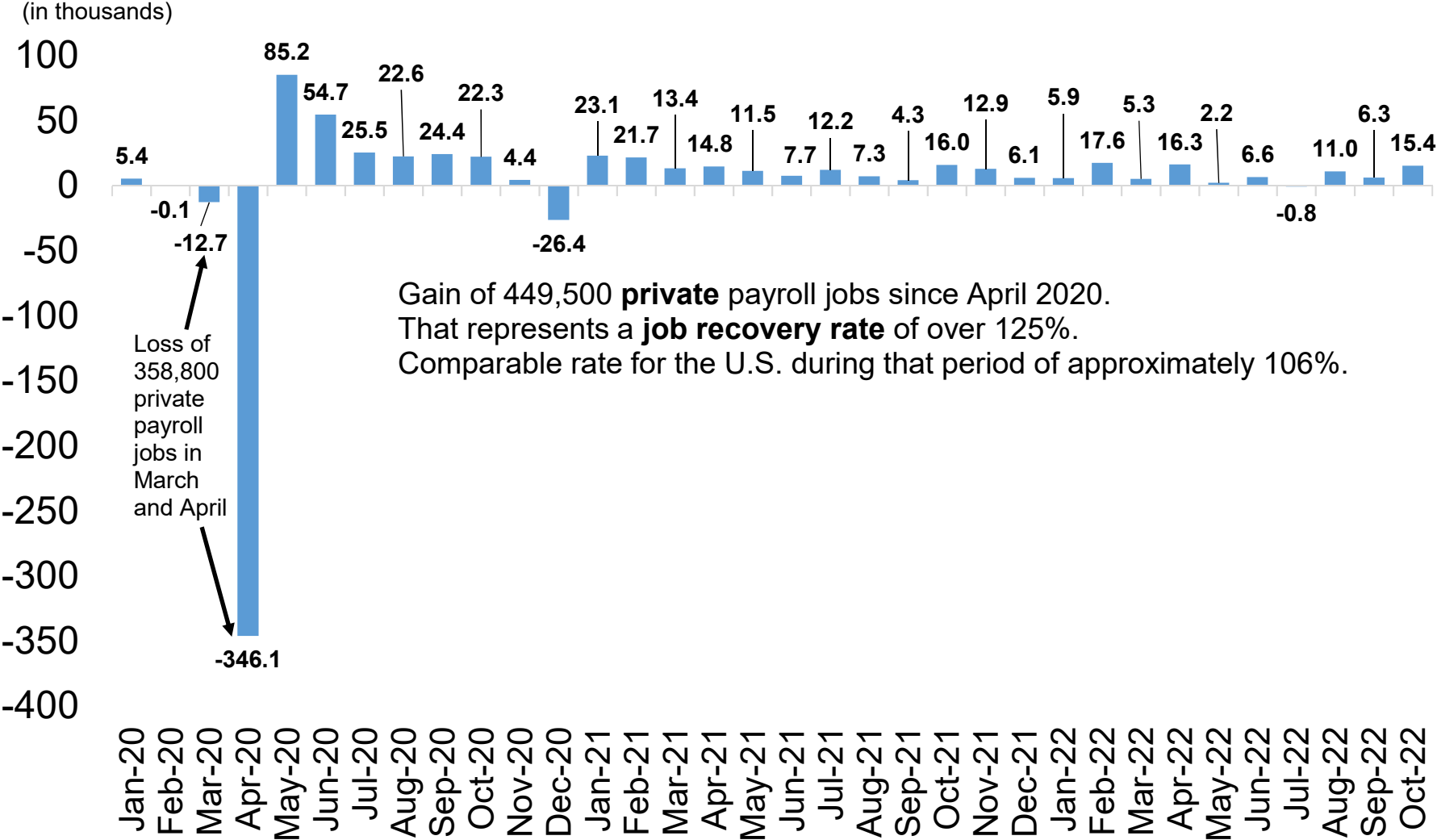
Data seasonally adjusted. Estimates share of Colorado's 16+ population that is employed in a given month.

Colorado Added 17,700 Total Nonfarm Jobs in October, Largest Over the Month Gain Since February 2021



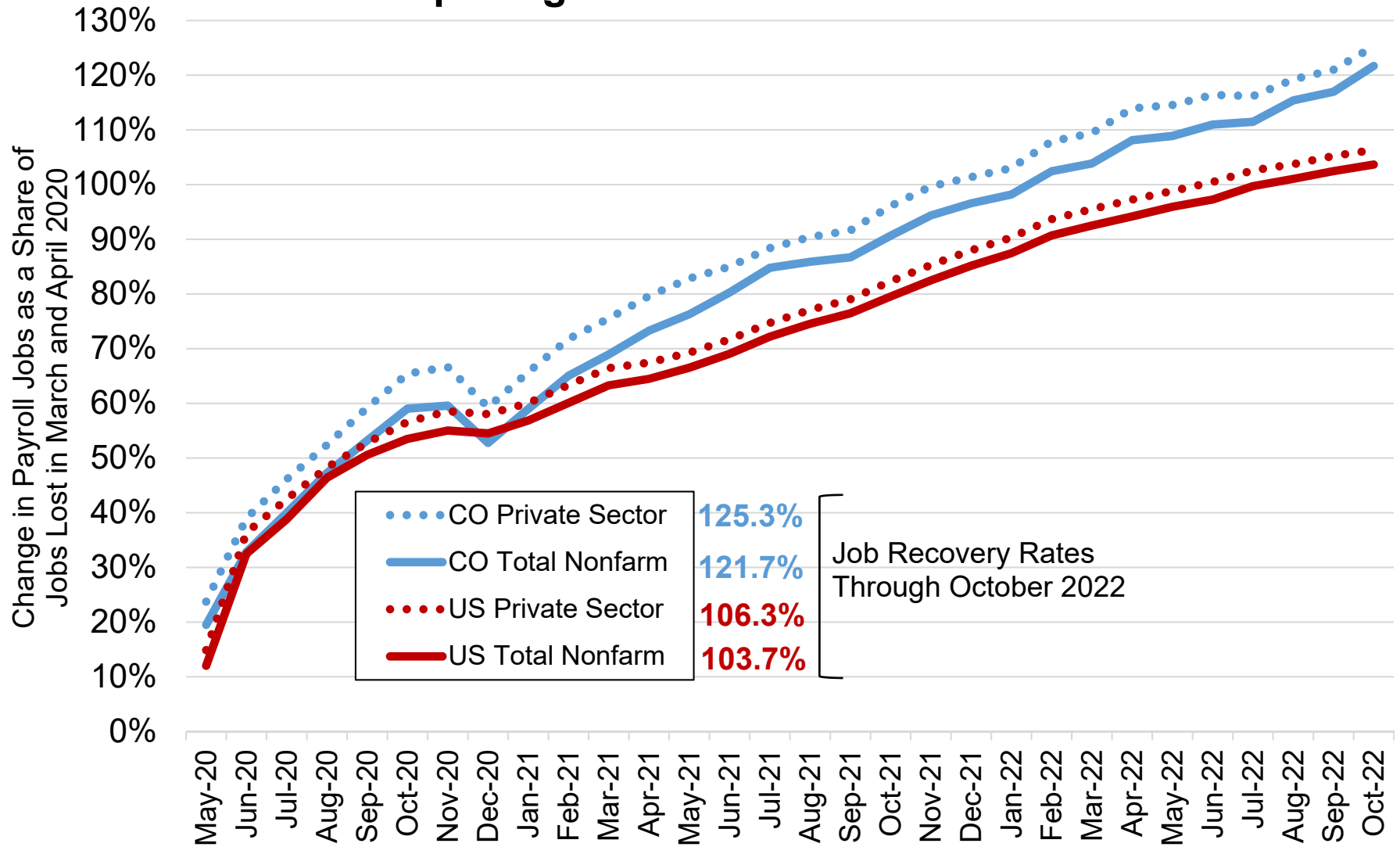
Source: Colorado Department of Labor and Employment; Bureau of Labor Statistics
Data seasonally adjusted

15,400 Private Sector Jobs Gained in October, September Numbers Revised Down 1,300



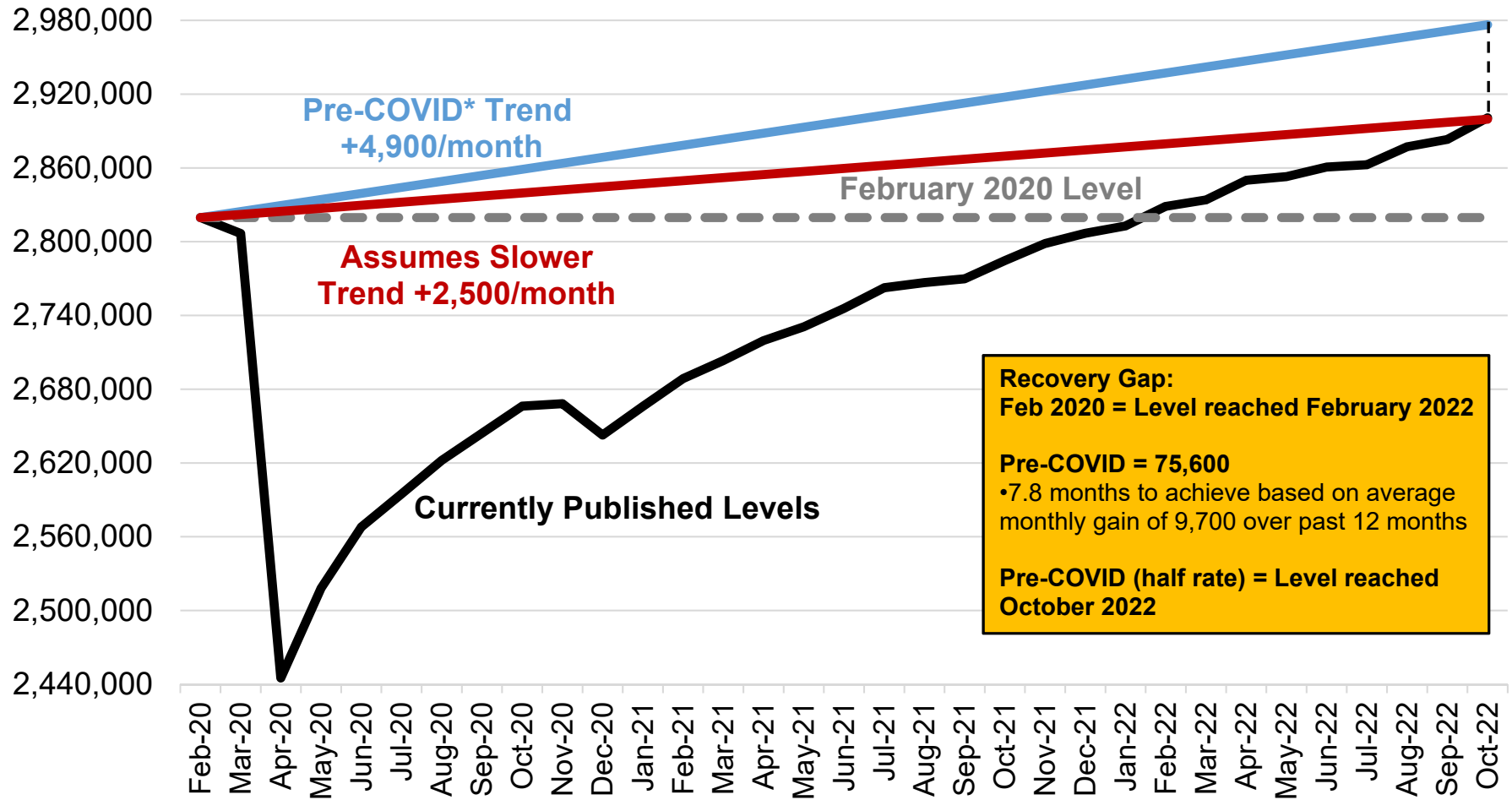
Source: Colorado Department of Labor and Employment; Bureau of Labor Statistics
Data seasonally adjusted

Colorado's Rate of Job Recovery Notably Outpacing the U.S. Since Mid-2021



Source: Colorado Department of Labor and Employment; Bureau of Labor Statistics
Data seasonally adjusted

Colorado Total Nonfarm Employment and the Gap Between Different Measures of Recovery Baselines



Recovery Gap:
 Feb 2020 = Level reached February 2022

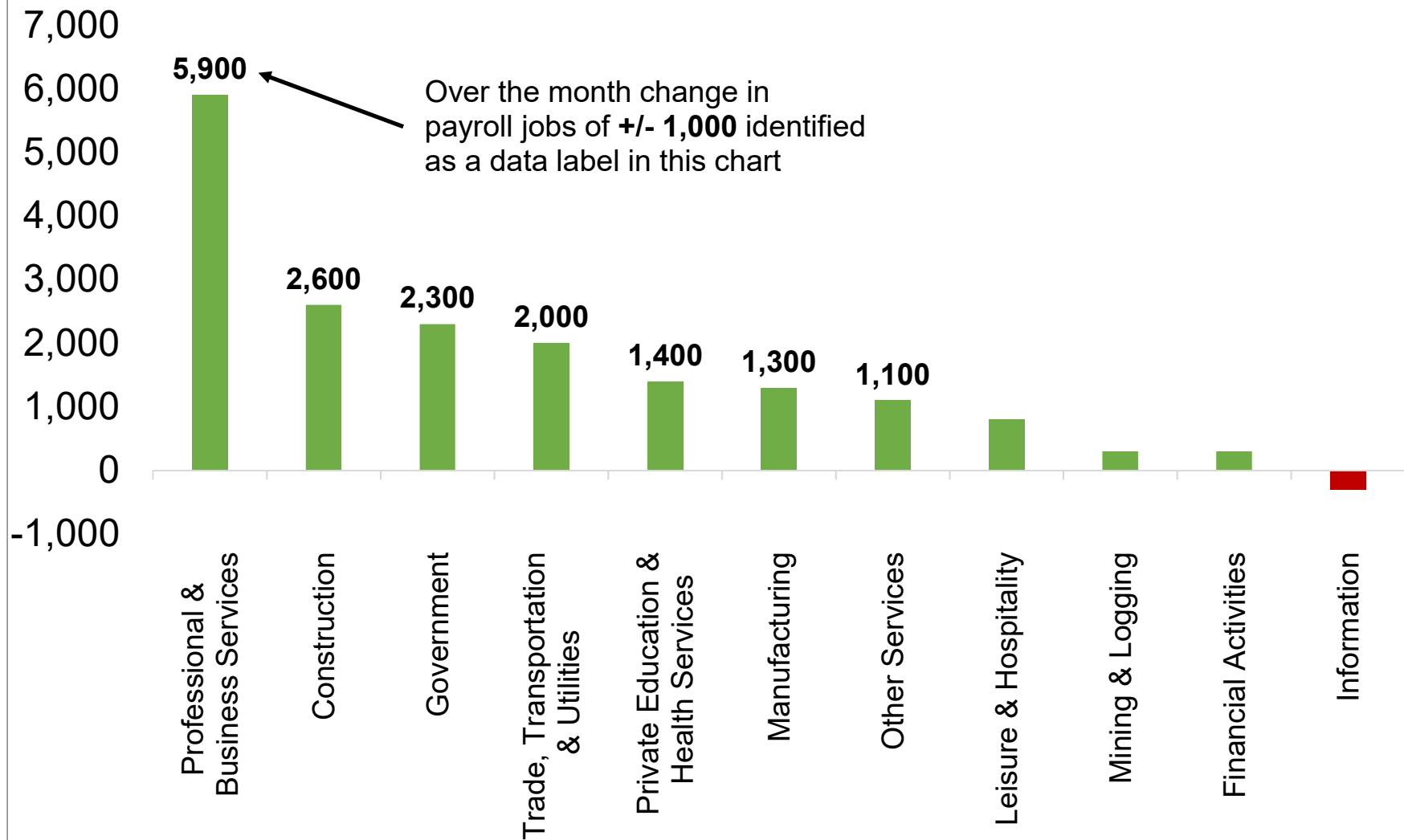
Pre-COVID = 75,600
 •7.8 months to achieve based on average monthly gain of 9,700 over past 12 months

Pre-COVID (half rate) = Level reached October 2022

Source: Colorado Department of Labor and Employment; Bureau of Labor Statistics
 Data seasonally adjusted

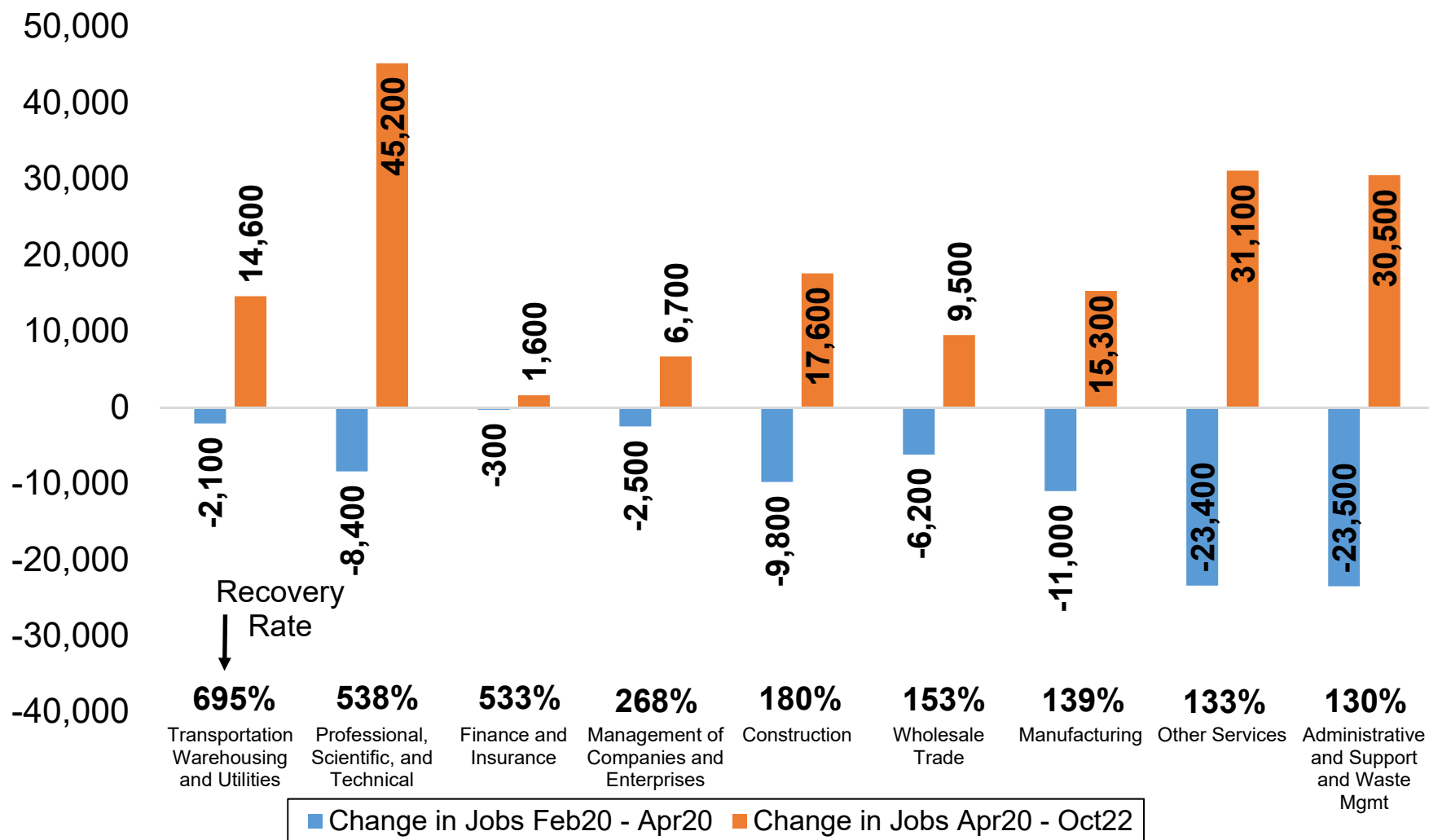
*Note: the **blue line** represents the trendline in the level of total nonfarm employment if the 2019 average monthly gain of 4,900 payroll jobs had held constant. This can be used as a baseline if no pandemic-related recession had occurred and job growth had continued at an uninterrupted pace. **Red line** assumes a slower counterfactual trendline.

Industry Gains Broad-Based and Robust in October, as Seven Supersectors Added at Least 1,000 Jobs



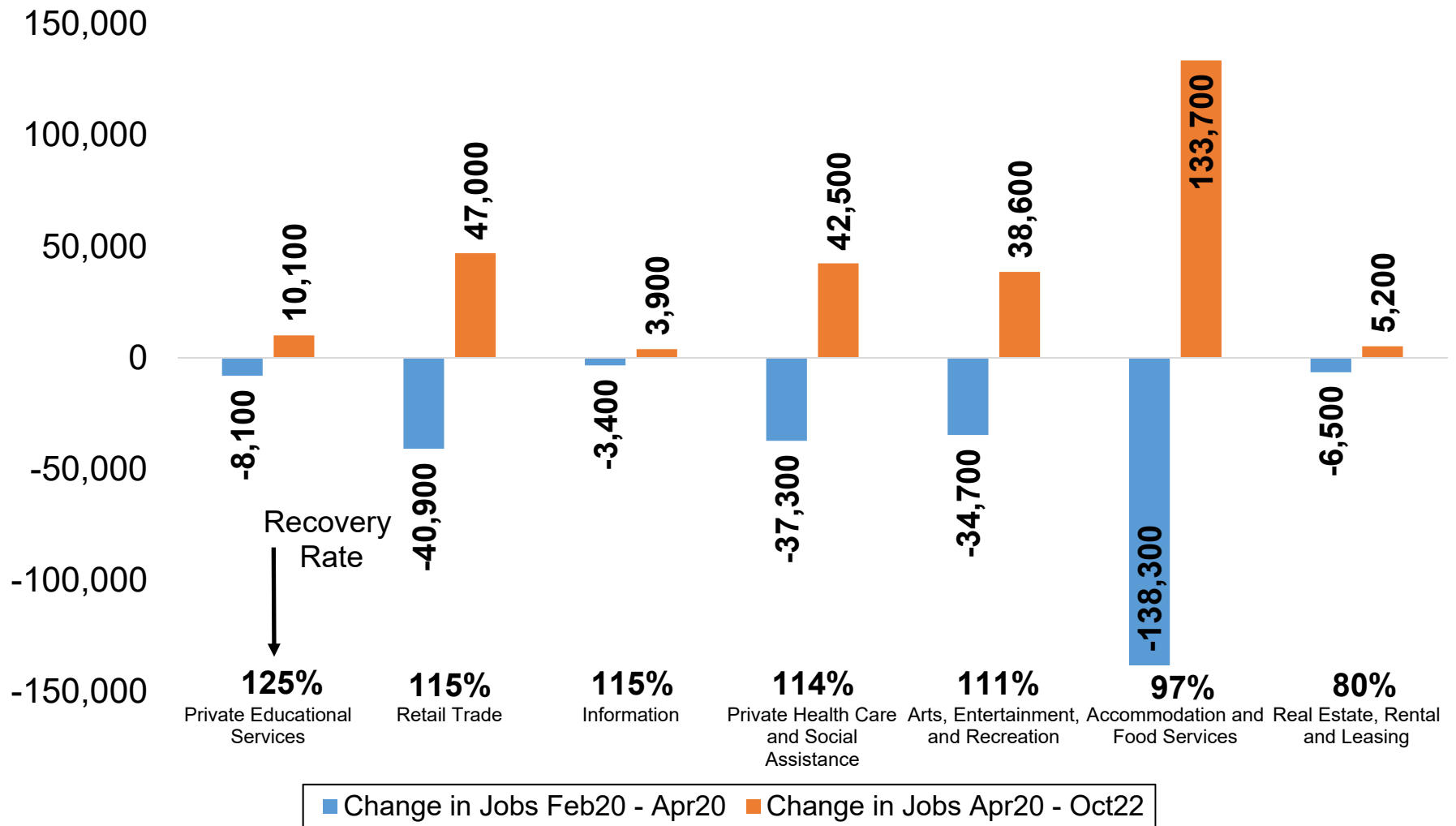
Source: Colorado Department of Labor and Employment; Bureau of Labor Statistics
Data seasonally adjusted

Colorado Industry Sectors with the Fastest Payroll Job Recovery Rates



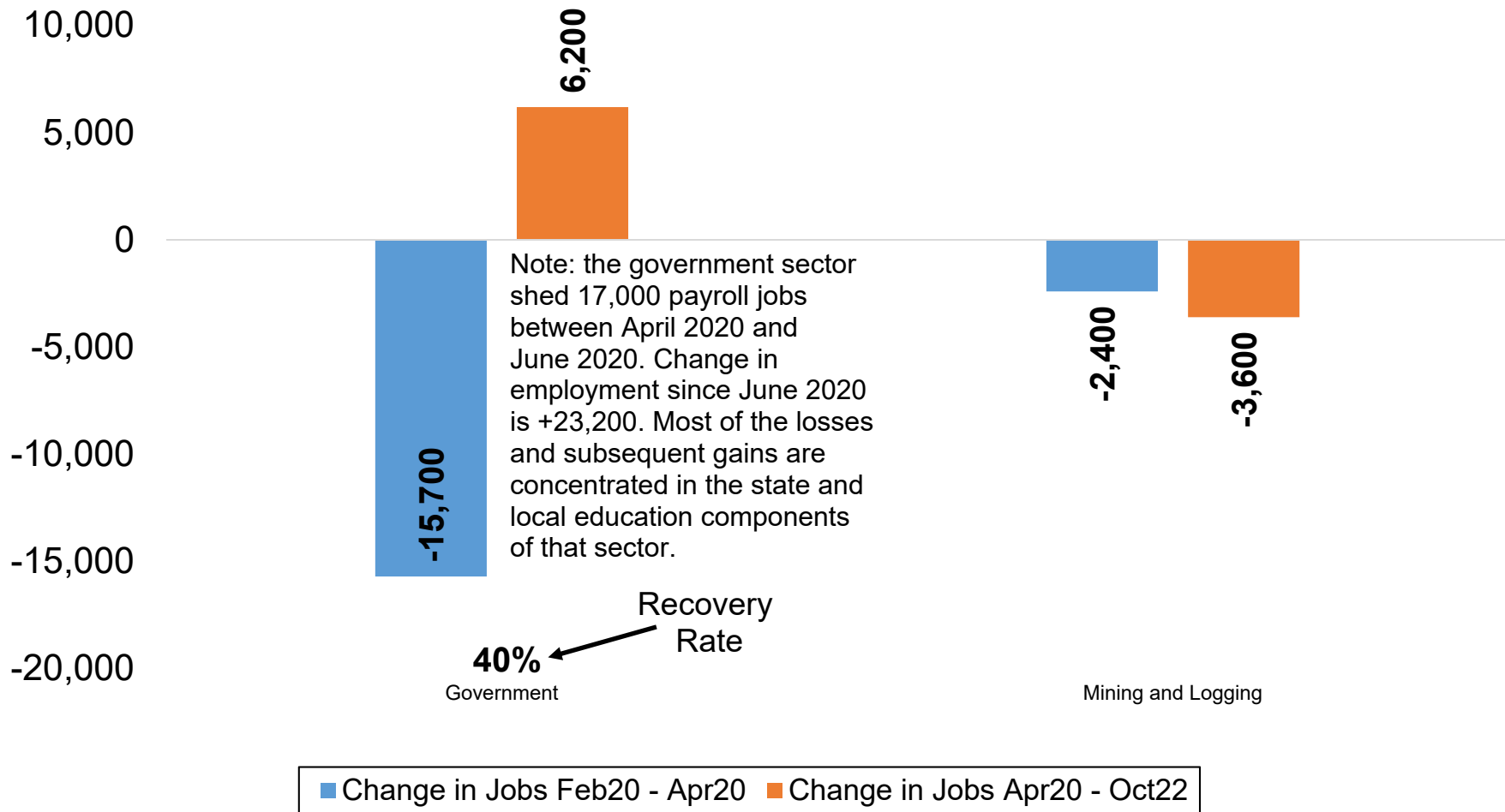
Source: Colorado Department of Labor and Employment; Bureau of Labor Statistics
Data seasonally adjusted

Colorado Industry Sectors with Payroll Job Recovery Rates Between 80 and 125 Percent



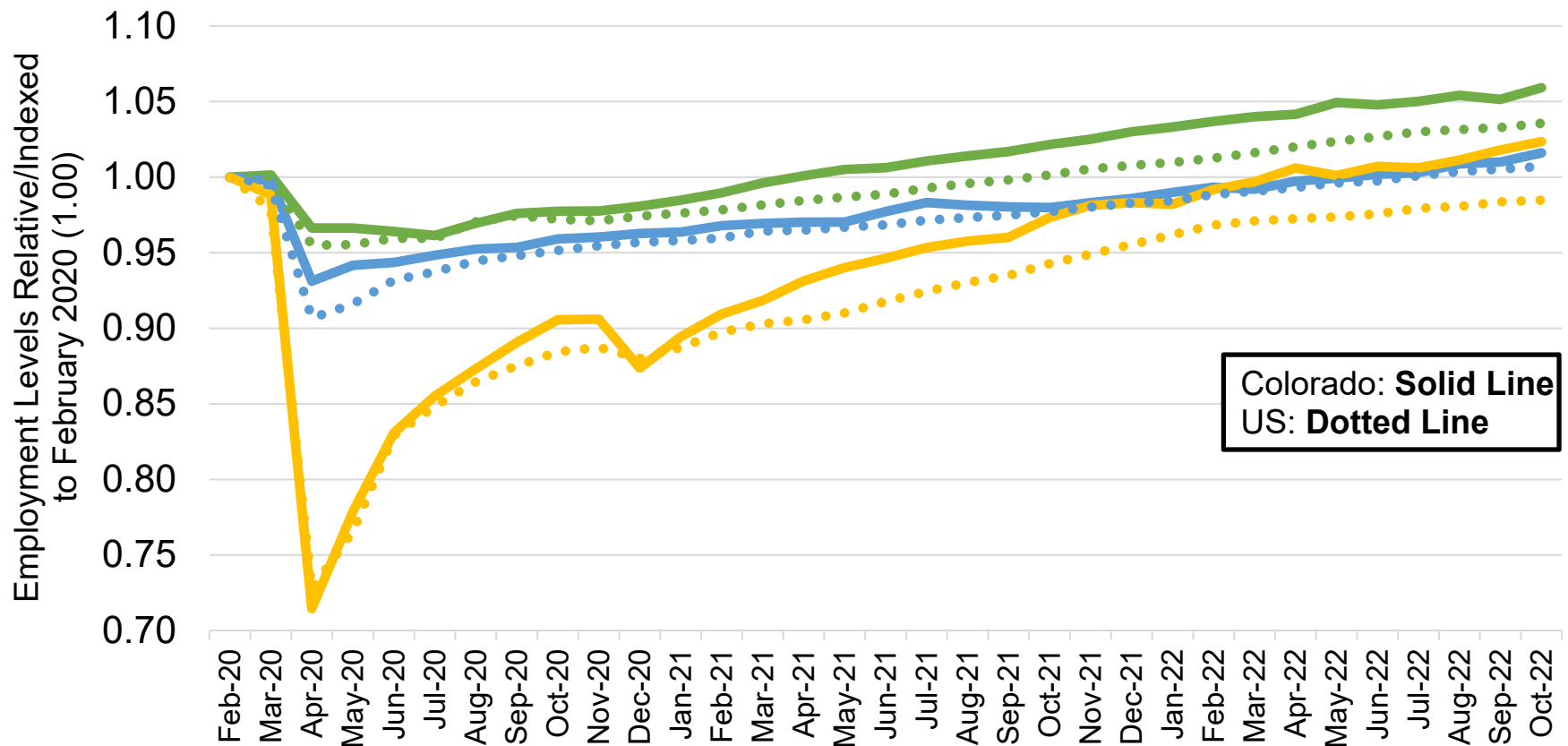
Source: Colorado Department of Labor and Employment; Bureau of Labor Statistics
Data seasonally adjusted

Colorado Industry Sectors with Low Recovery Rates or Continued Losses in Payroll Jobs Since April 2020



Source: Colorado Department of Labor and Employment; Bureau of Labor Statistics
Data seasonally adjusted

Job Loss and Recovery by Low, Medium, and High Wage Industries (Colorado & U.S.)

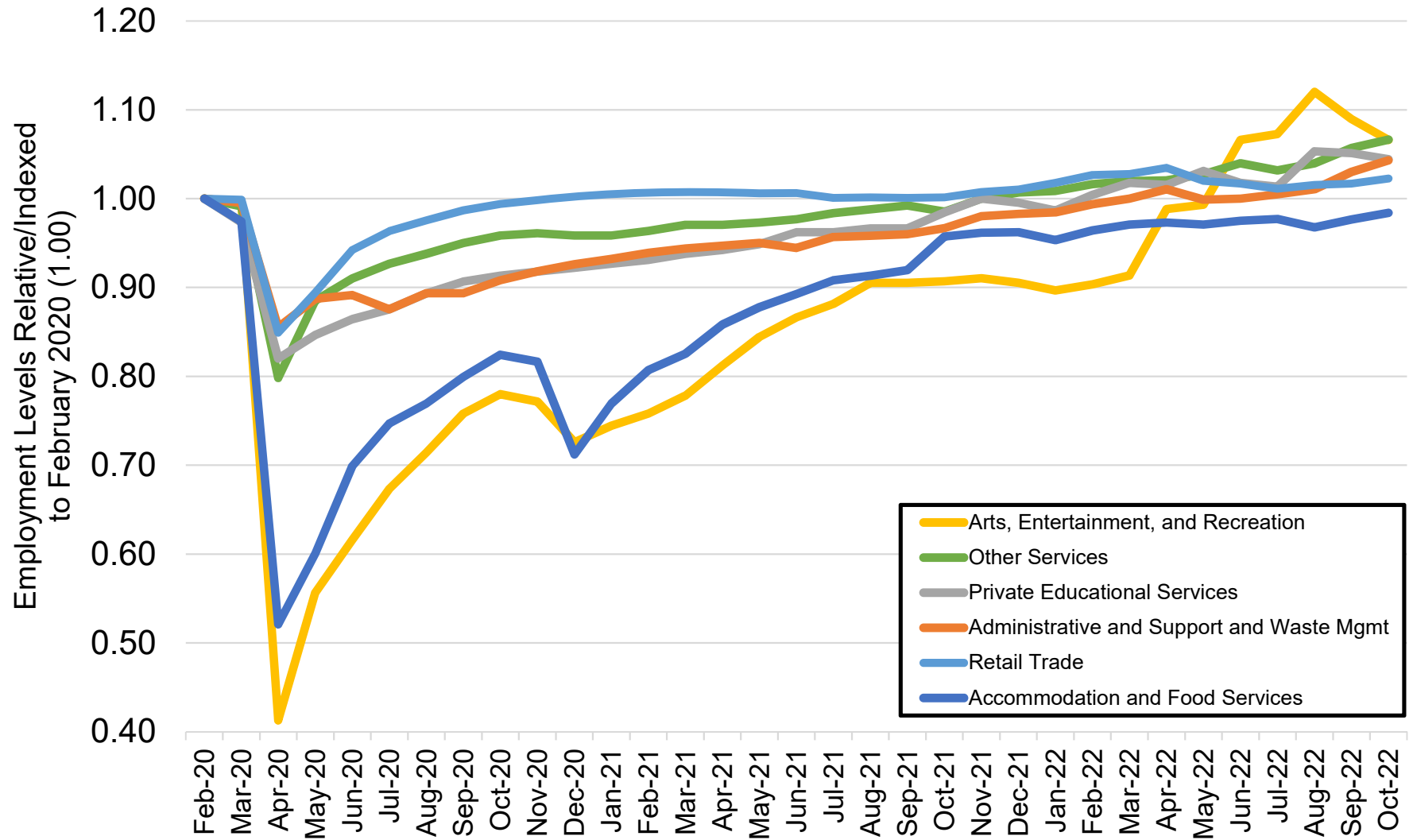


Source: Colorado Department of Labor and Employment; Bureau of Labor Statistics

Data seasonally adjusted. Note: low, medium, and high wage industries are determined by the 2019 state-level average weekly wage estimates from the Quarterly Census of Employment and Wages. **Low wage industries include:** retail trade; admin support/waste mgmt; private education services; arts, entertainment, and recreation; accommodation and food services; and other services. **Medium wage industries include:** construction; manufacturing; transportation, warehousing, and utilities; real estate, rental, and leasing; private health care and social assistance; state government; and local government.

High wage industries include: mining and logging; wholesale trade; information; finance and insurance; professional and technical services; management of companies; and federal government.

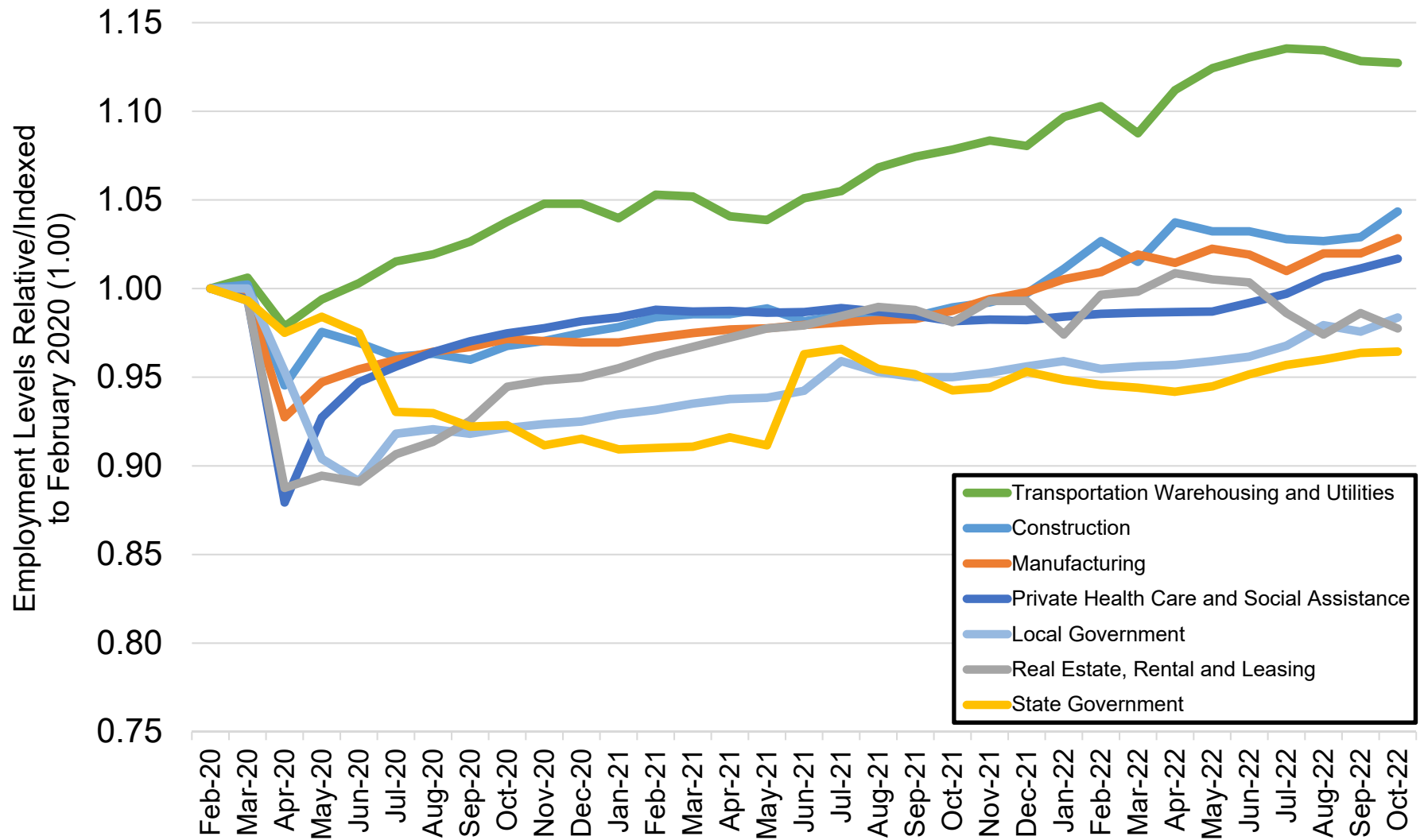
Colorado Job Loss & Recovery by Low Wage Industries



Source: Colorado Department of Labor and Employment; Bureau of Labor Statistics

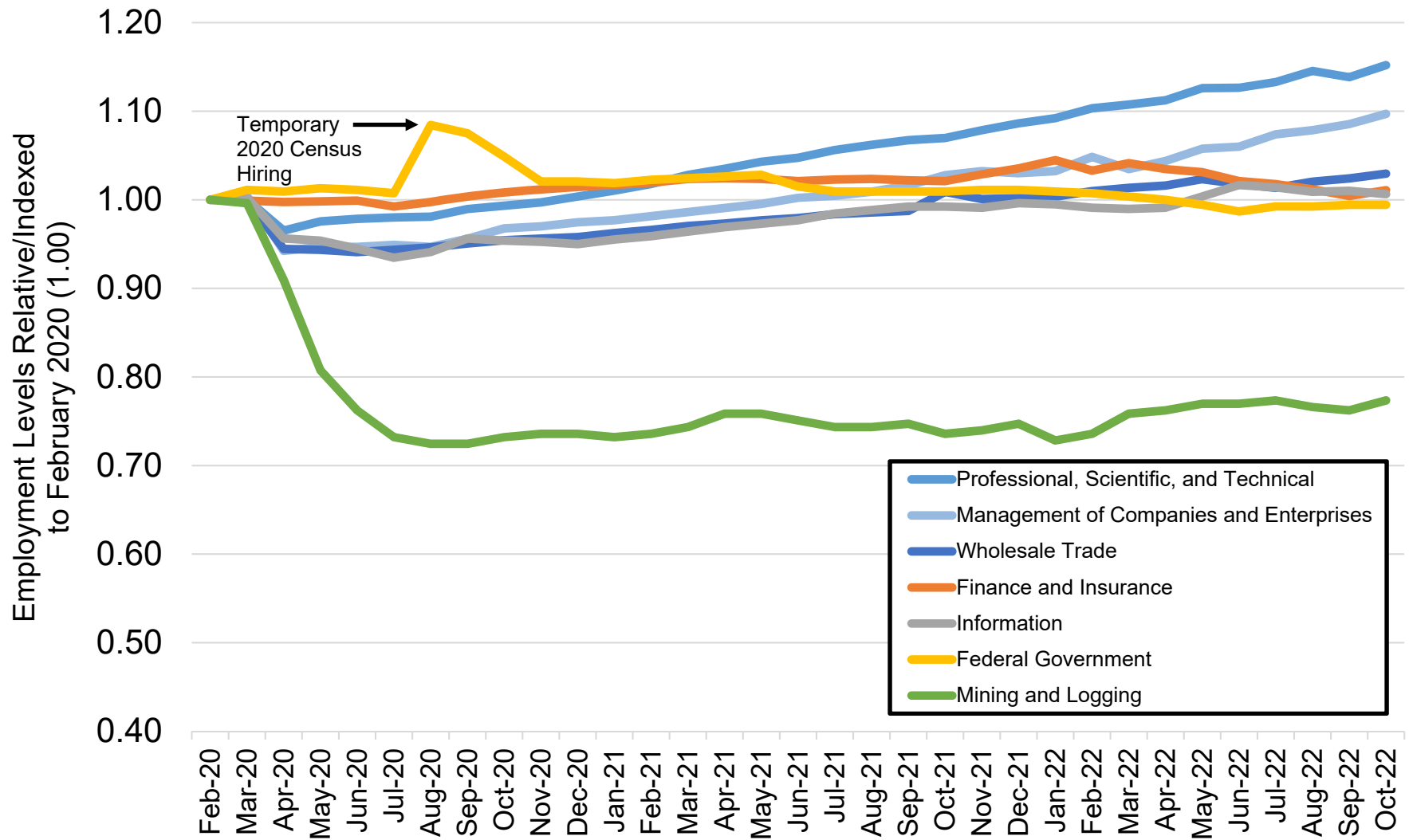
Data seasonally adjusted. Note: low wage industries are determined by the 2019 state-level average weekly wage estimates from the Quarterly Census of Employment and Wages.

Colorado Job Loss & Recovery by Medium Wage Industries



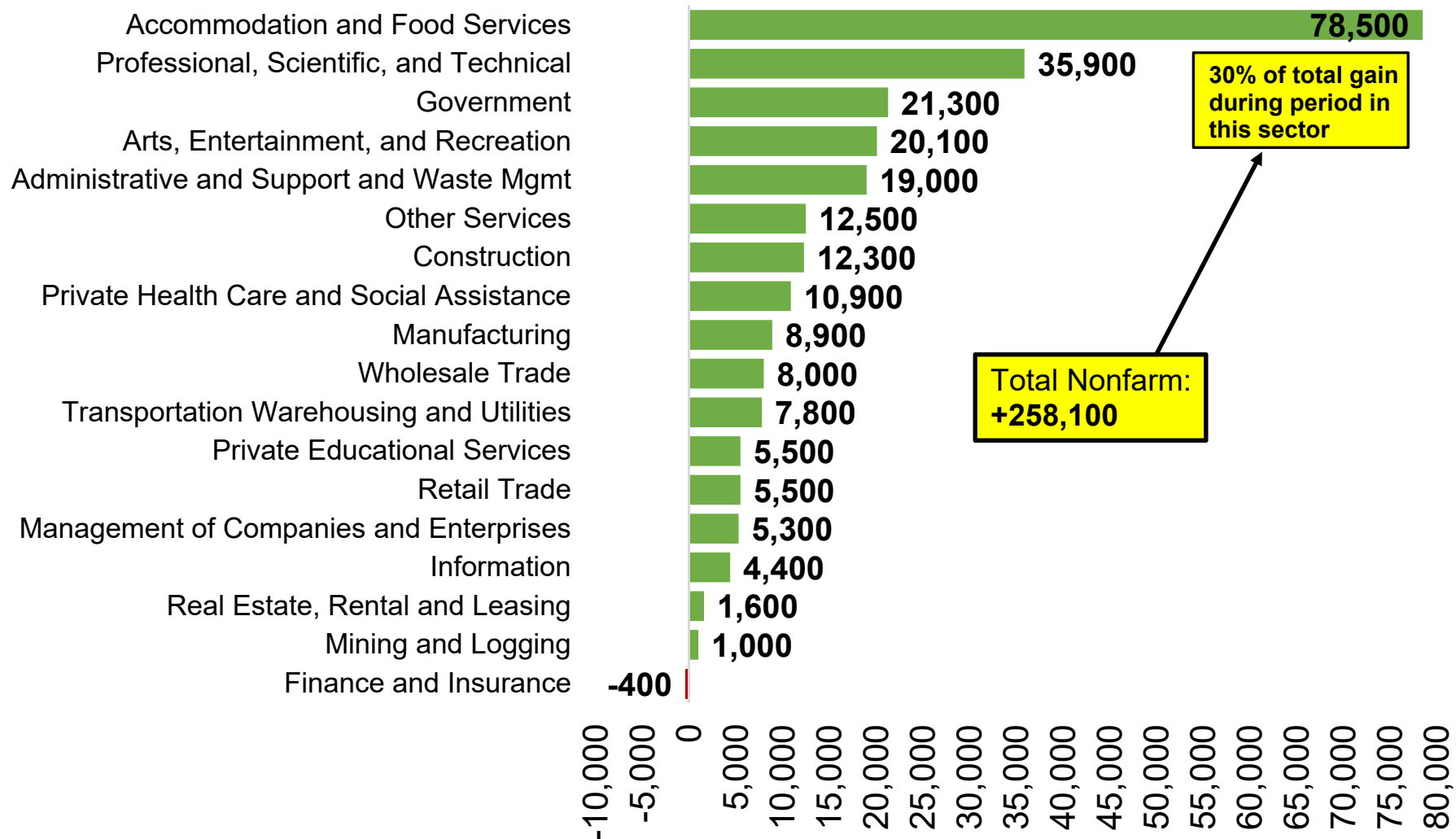
Source: Colorado Department of Labor and Employment; Bureau of Labor Statistics
 Data seasonally adjusted. Note: medium wage industries are determined by the 2019 state-level average weekly wage estimates from the Quarterly Census of Employment and Wages.

Colorado Job Loss & Recovery by High Wage Industries



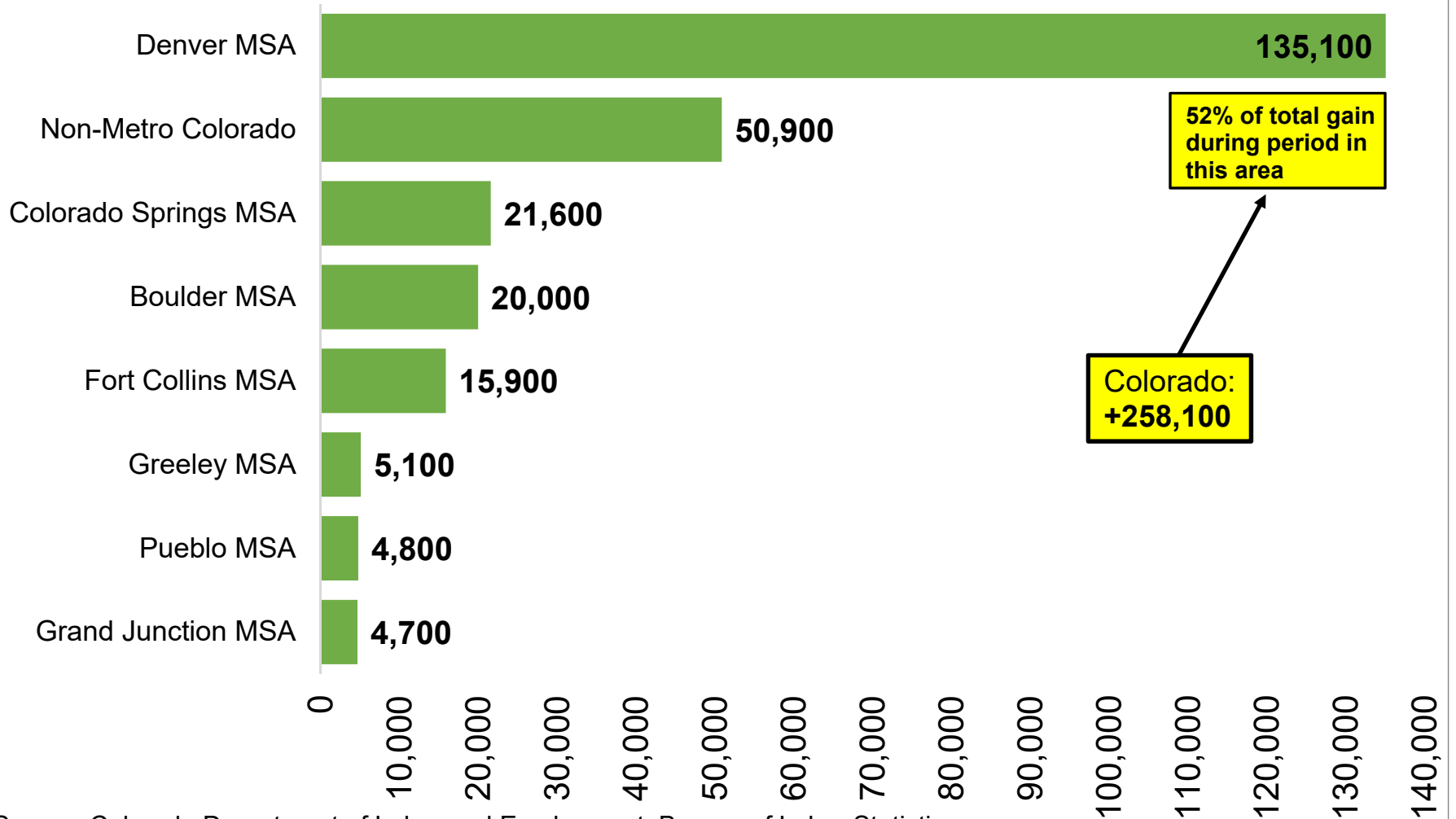
Source: Colorado Department of Labor and Employment; Bureau of Labor Statistics
 Data seasonally adjusted. Note: high wage industries are determined by the 2019 state-level average weekly wage estimates from the Quarterly Census of Employment and Wages.

Change in Payroll Jobs Since December 2020, by Industry Sector



Source: Colorado Department of Labor and Employment; Bureau of Labor Statistics
Data seasonally adjusted

Change in Payroll Jobs Since December 2020, by Colorado Substate Area

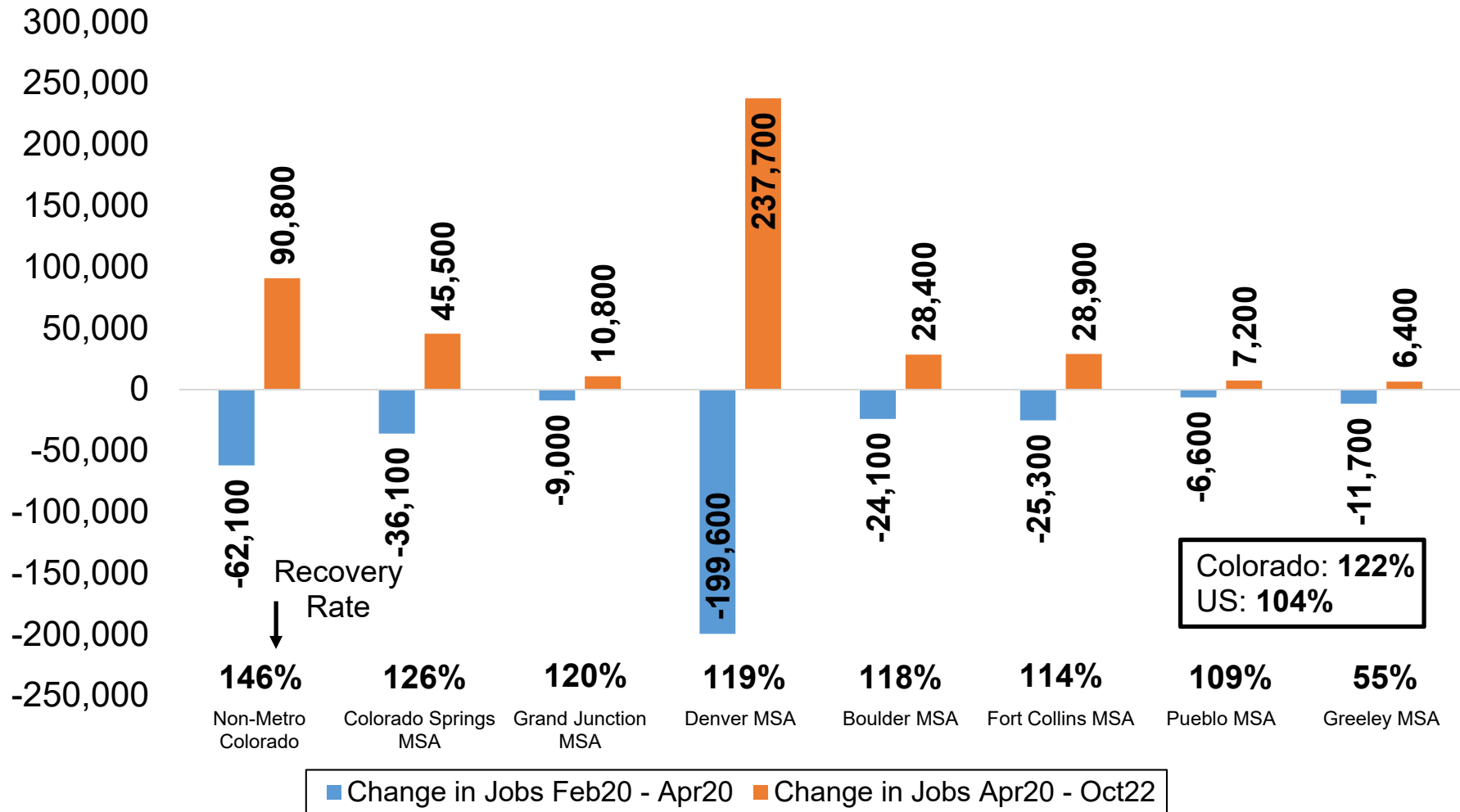


Source: Colorado Department of Labor and Employment; Bureau of Labor Statistics

Data seasonally adjusted

Note: MSA = Metropolitan Statistical Area; Non-Metro Colorado = residual of state that is not an MSA (47 counties)

Total Nonfarm Job Recovery Rates by Colorado Substate Area

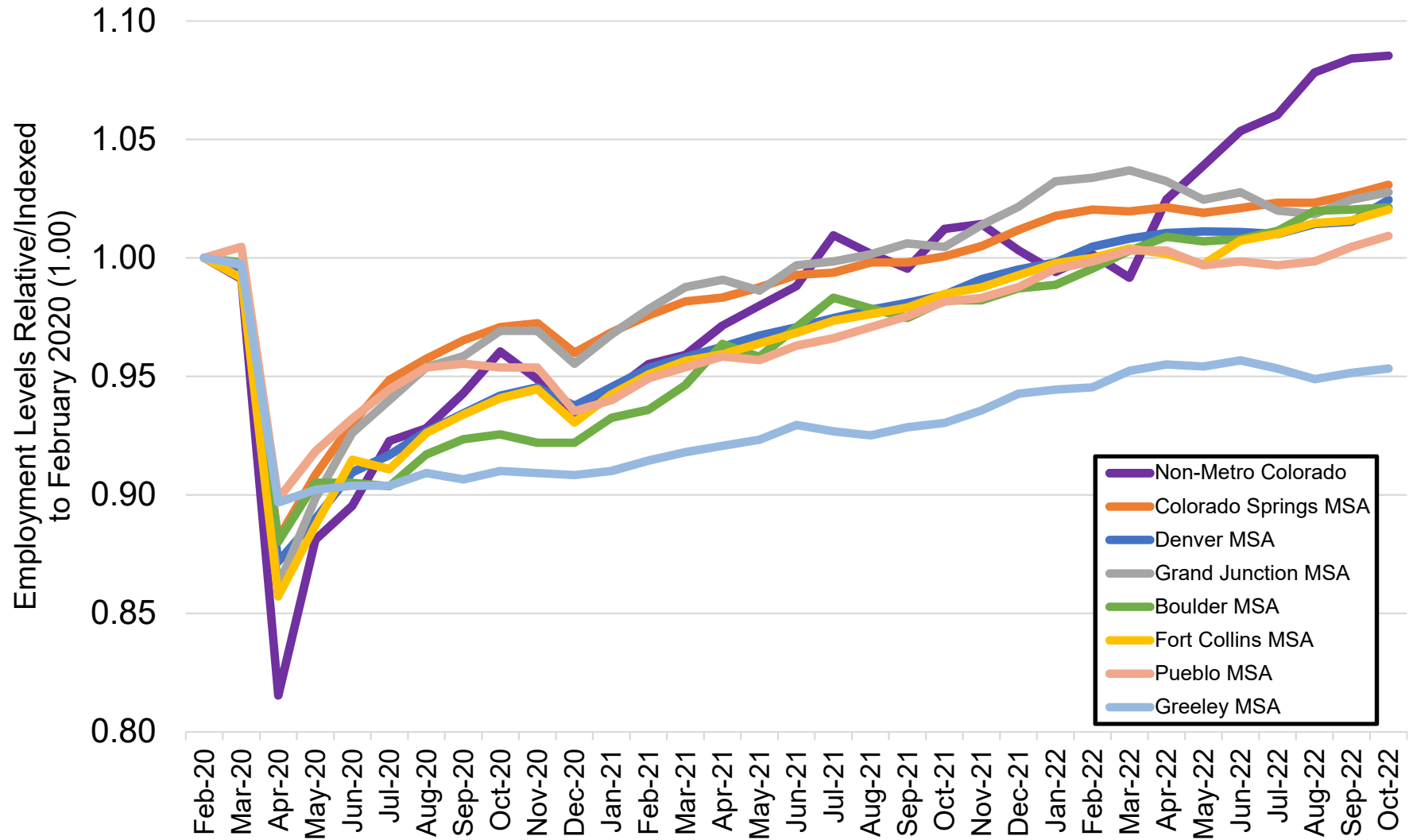


Source: Colorado Department of Labor and Employment; Bureau of Labor Statistics

Data seasonally adjusted

Note: MSA = Metropolitan Statistical Area; Non-Metro Colorado = residual of state that is not an MSA (47 total counties)

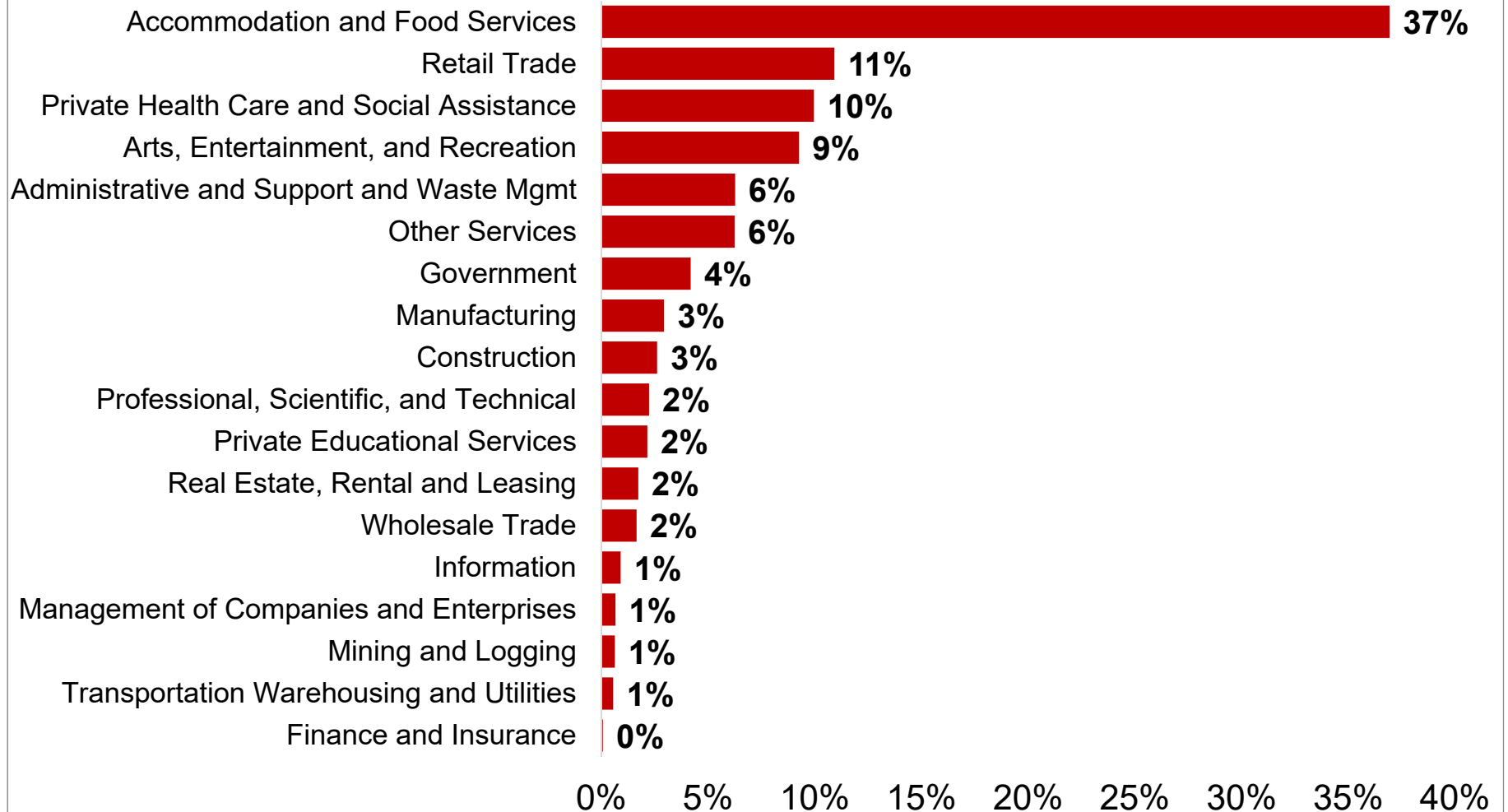
Colorado Job Loss & Recovery by Colorado Substate Area



Source: Colorado Department of Labor and Employment; Bureau of Labor Statistics

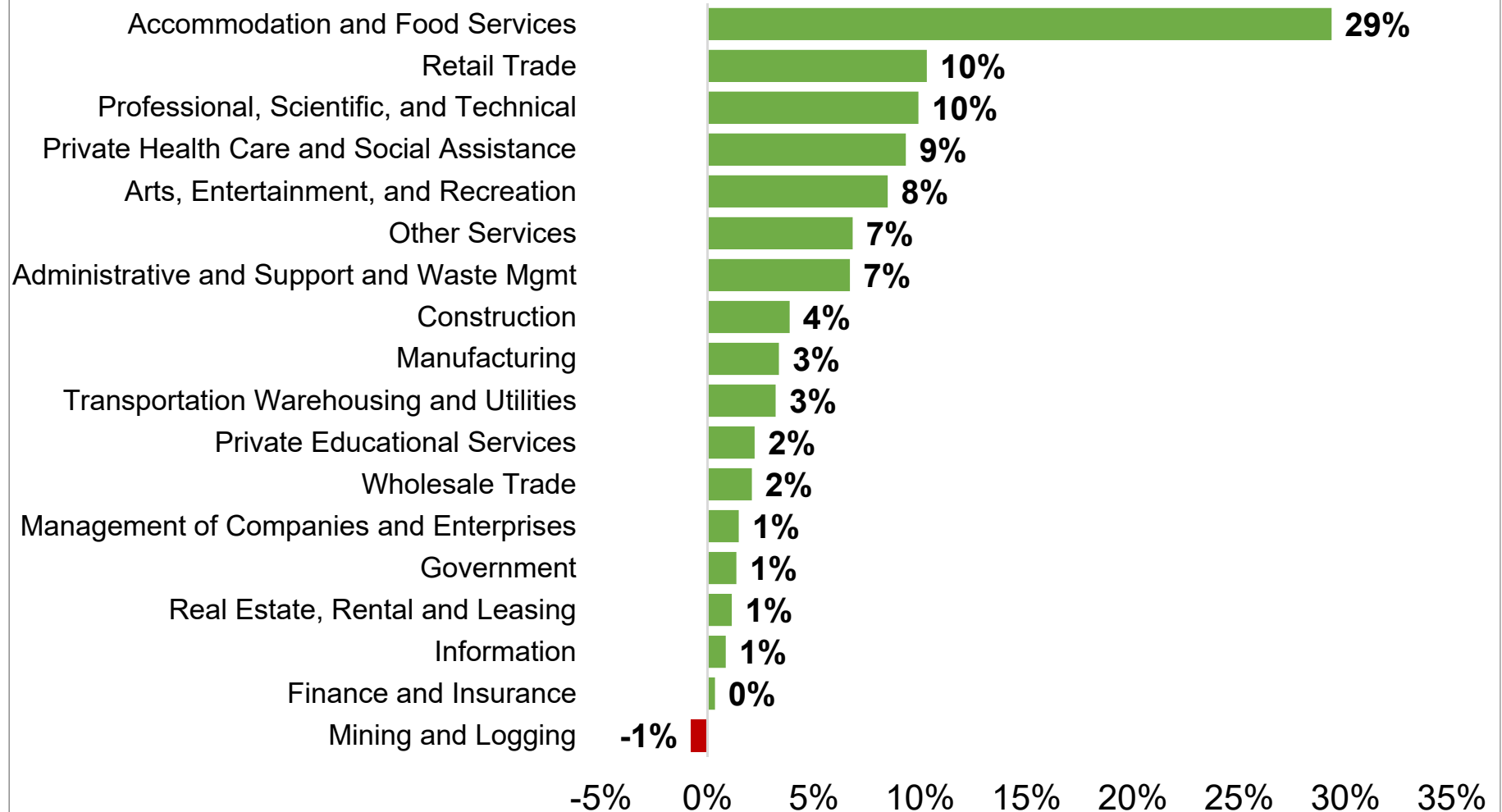
Data seasonally adjusted. Note: MSA = Metropolitan Statistical Area; Non-Metro Colorado = residual of state that is not an MSA (47 counties).

Percent Contribution to Total Colorado Nonfarm Payroll Jobs Lost March & April 2020, by Industry Sector



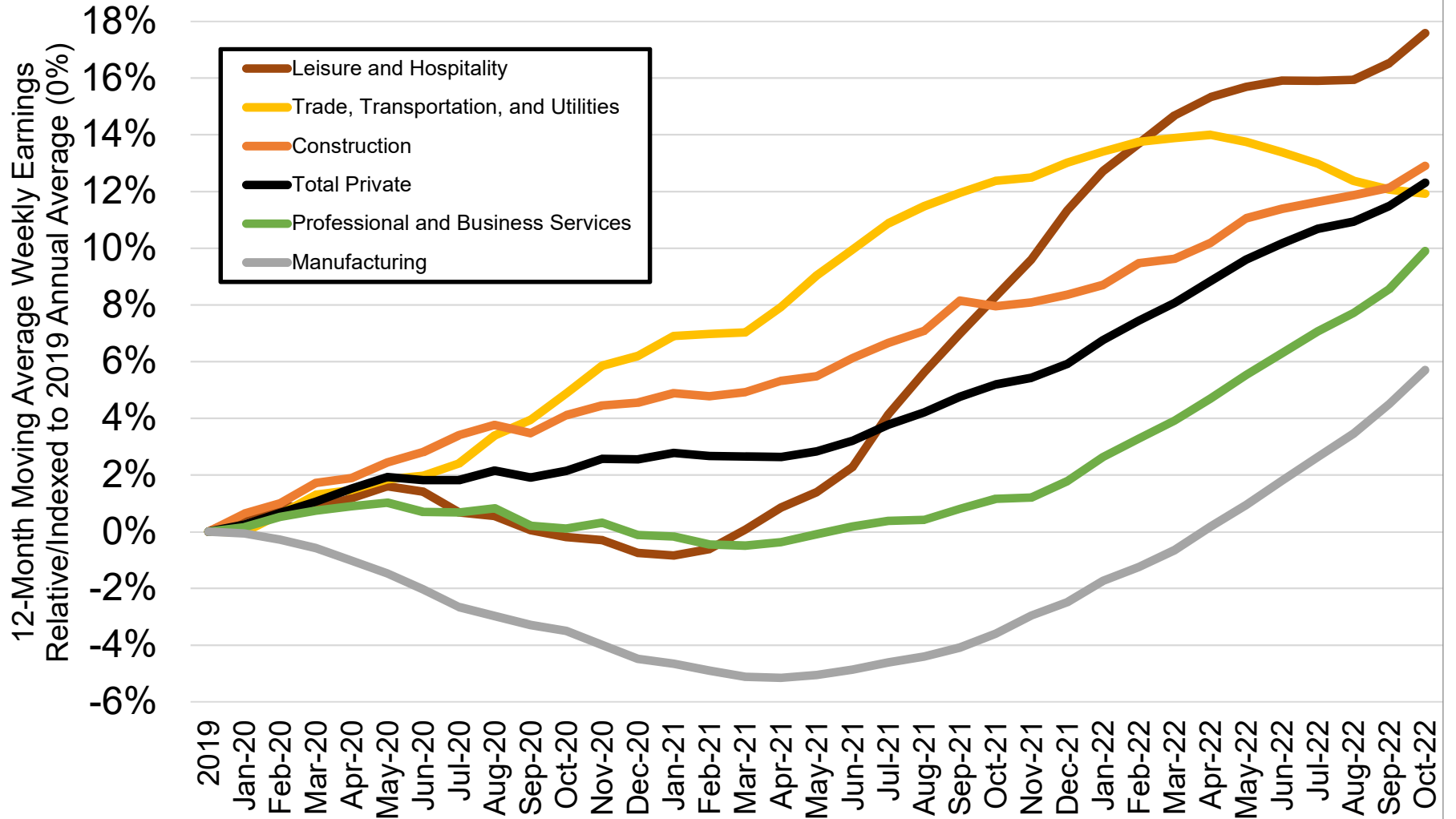
Source: Colorado Department of Labor and Employment; Bureau of Labor Statistics
Data seasonally adjusted

Percent Contribution to Total Colorado Nonfarm Payroll Jobs Added Since April 2020, by Industry Sector



Source: Colorado Department of Labor and Employment; Bureau of Labor Statistics
Data seasonally adjusted

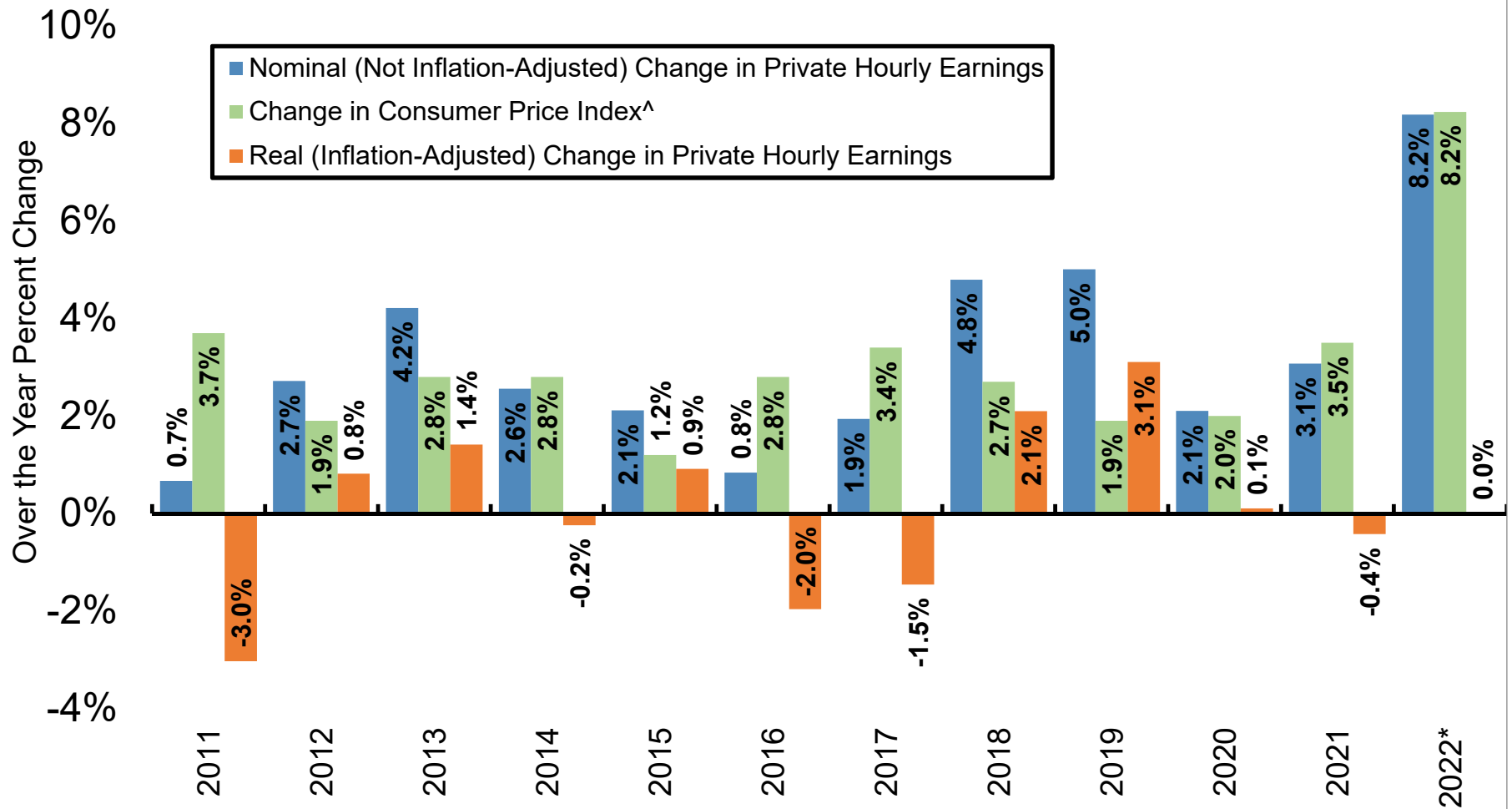
Percent Change in Average Weekly Earnings Since 2019, by Select Colorado Industry



Source: Colorado Department of Labor and Employment; Bureau of Labor Statistics

Data not seasonally adjusted. Note: each month on this chart represents a 12-month moving average and measures the percent change in average weekly earnings compared to the 2019 annual average for that industry.

Nominal and Real Percent Change in Colorado's Private Average Hourly Earnings Since 2011

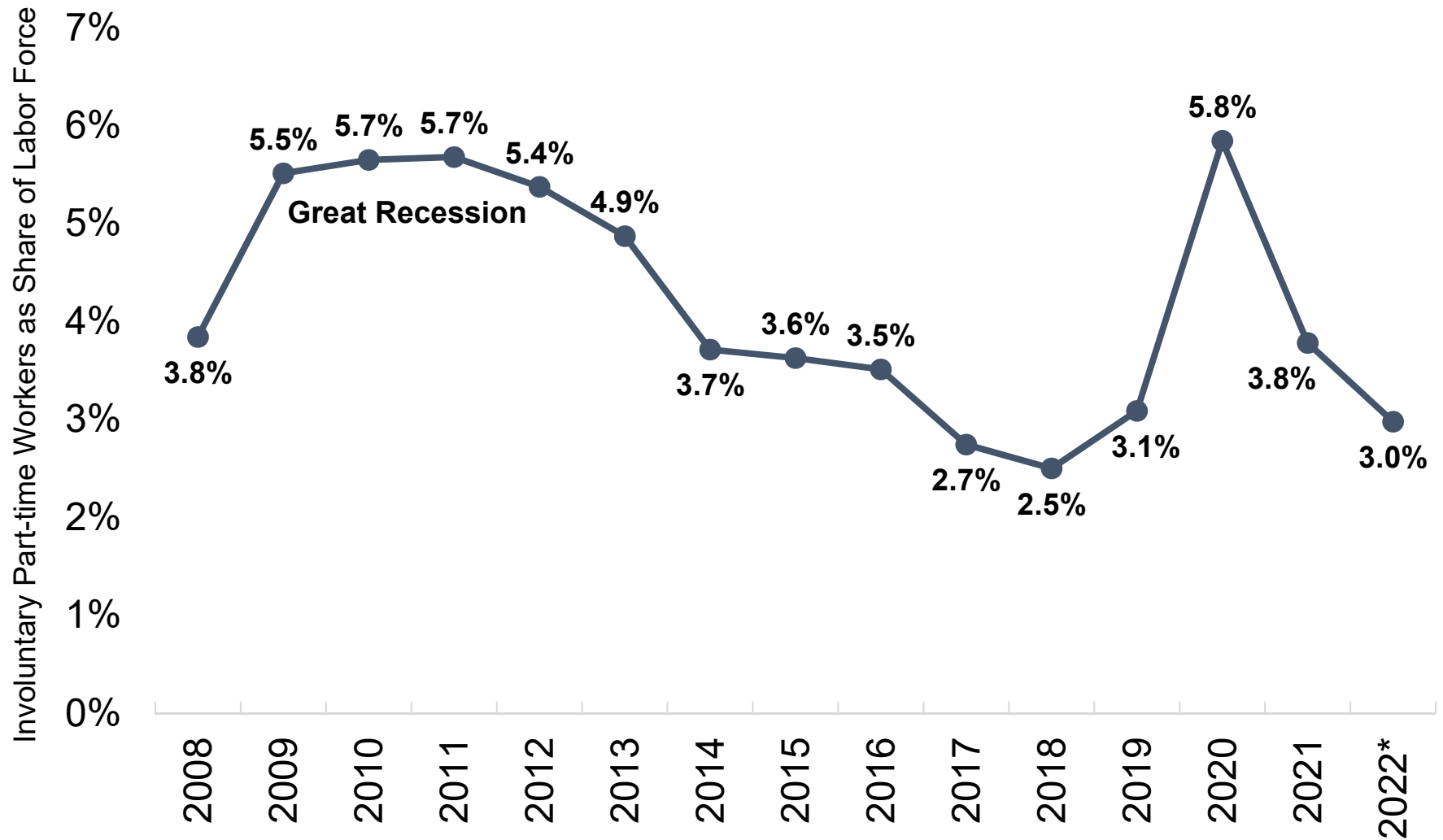


Source: Colorado Department of Labor and Employment estimates; Bureau of Labor Statistics

[^]Note: Denver-Aurora-Lakewood CPI-U estimates were utilized to adjust average hourly earnings for inflation.

That data is available here: <https://www.bls.gov/cpi/regional-resources.htm>. *2022 nominal earnings growth is measured using data for January to October compared to the same period the year prior, while real earnings were adjusted using the average over-the-year change in CPI-U for January, March, May, July, and September 2022.

Involuntary Part-Time Workers as Share of Labor Force

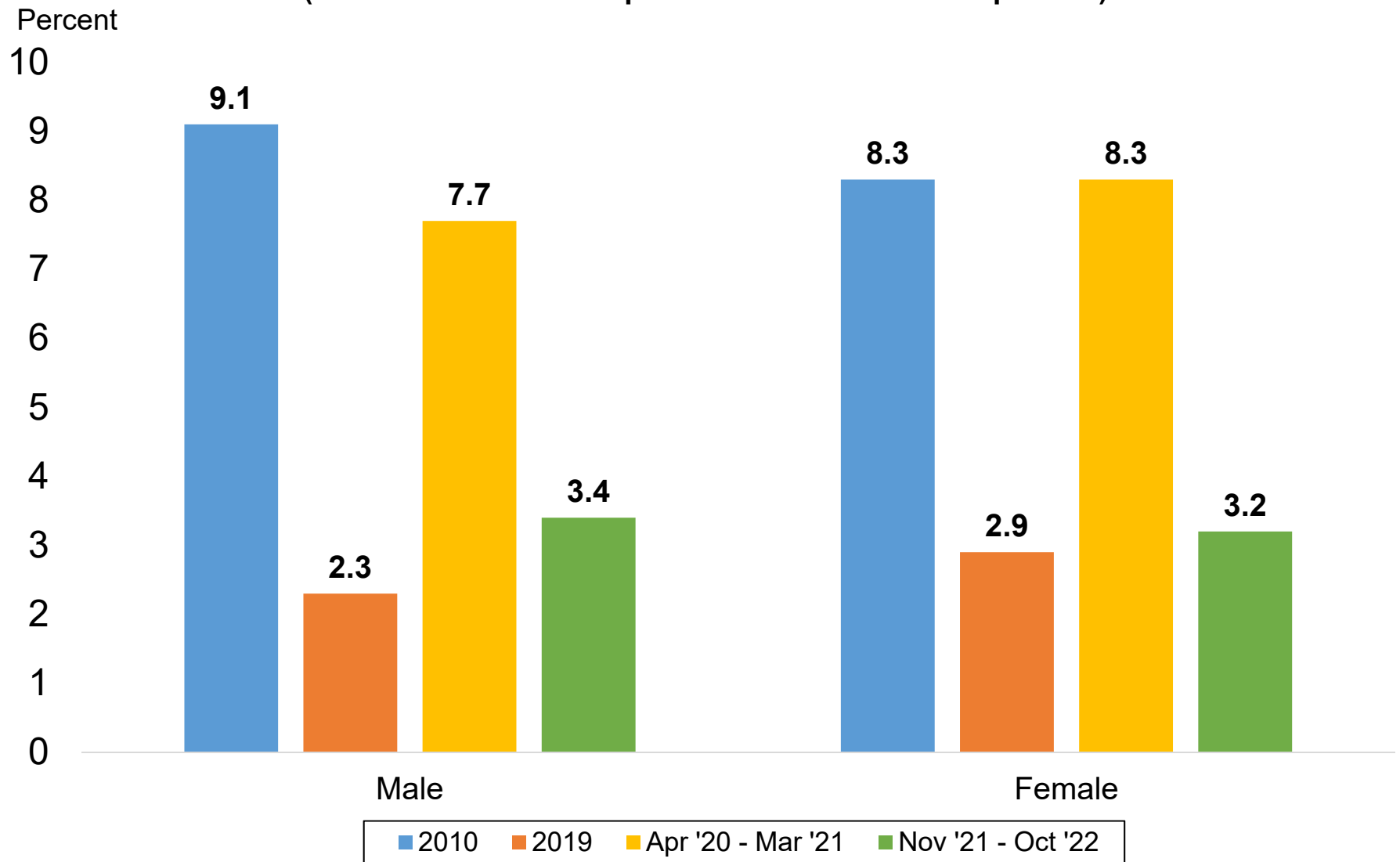


Source: Current Population Survey

Data not seasonally adjusted. Involuntary part-time workers are those individuals who are working part-time hours (34 hours or less), but prefer full-time hours (35+ hours).

*Average through the first ten months of 2022.

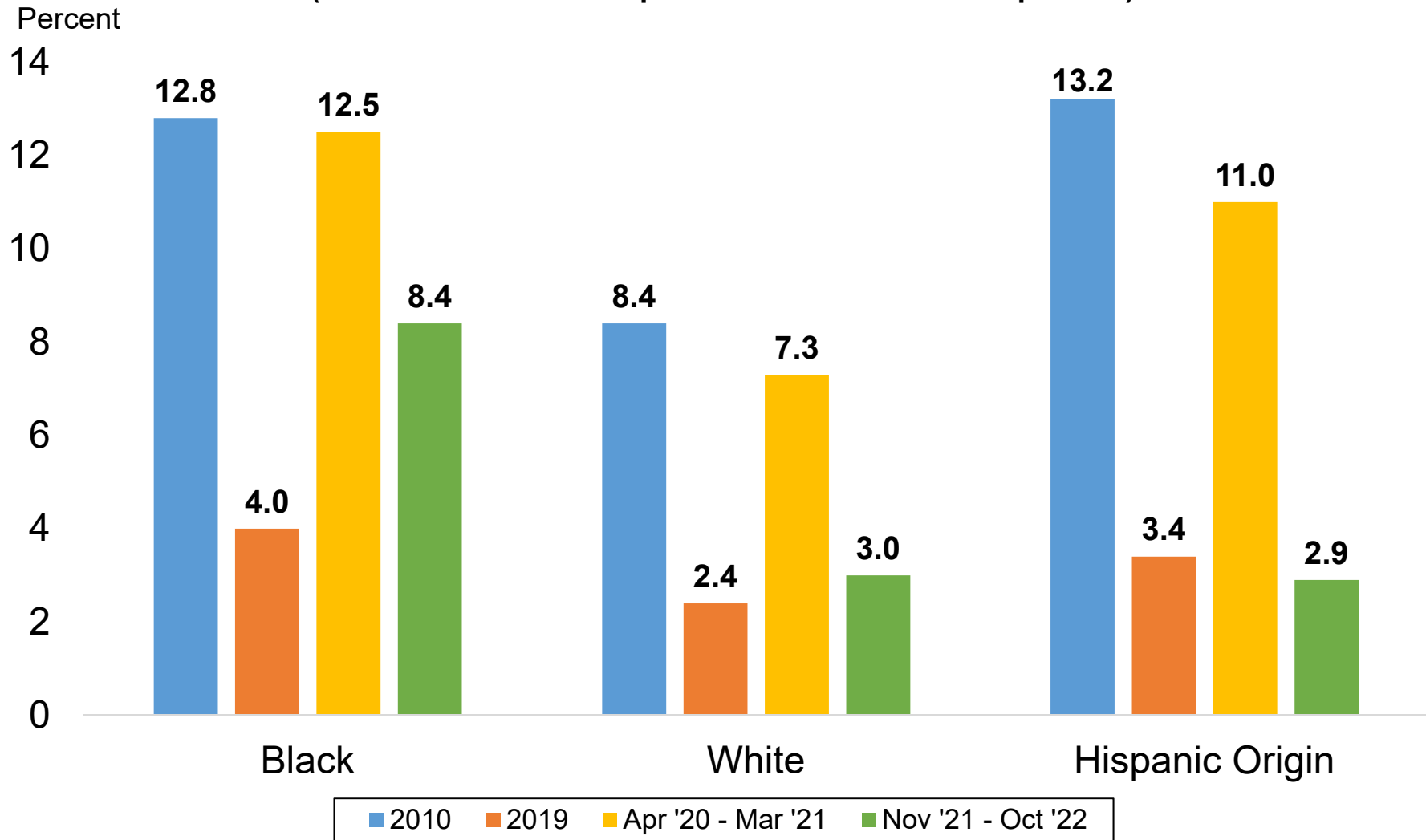
Unemployment Rates by Gender (Most recent 12-month period available vs. select periods)



Source: Current Population Survey

Data not seasonally adjusted. Unemployment rates by gender for individuals 16 years and older.

Unemployment Rates by Race & Ethnicity (Most recent 12-month period available vs. select periods)

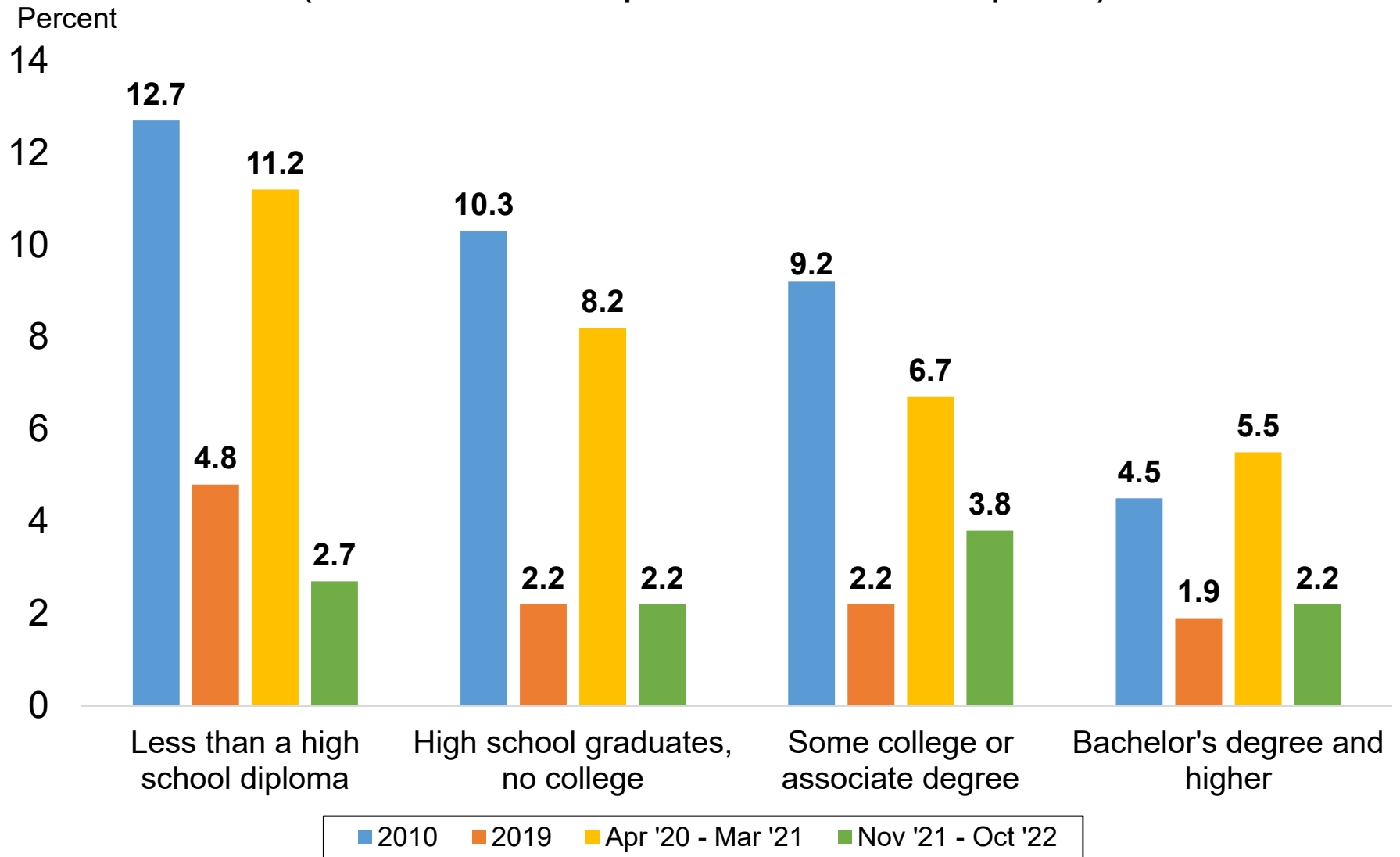


Source: Current Population Survey

Data not seasonally adjusted. Other race categories excluded due to small sample size. Hispanic origin category is not mutually exclusive (i.e. hispanic and non-hispanic ethnicities are represented in both race categories).

Unemployment Rates by Educational Attainment

(Most recent 12-month period available vs. select periods)

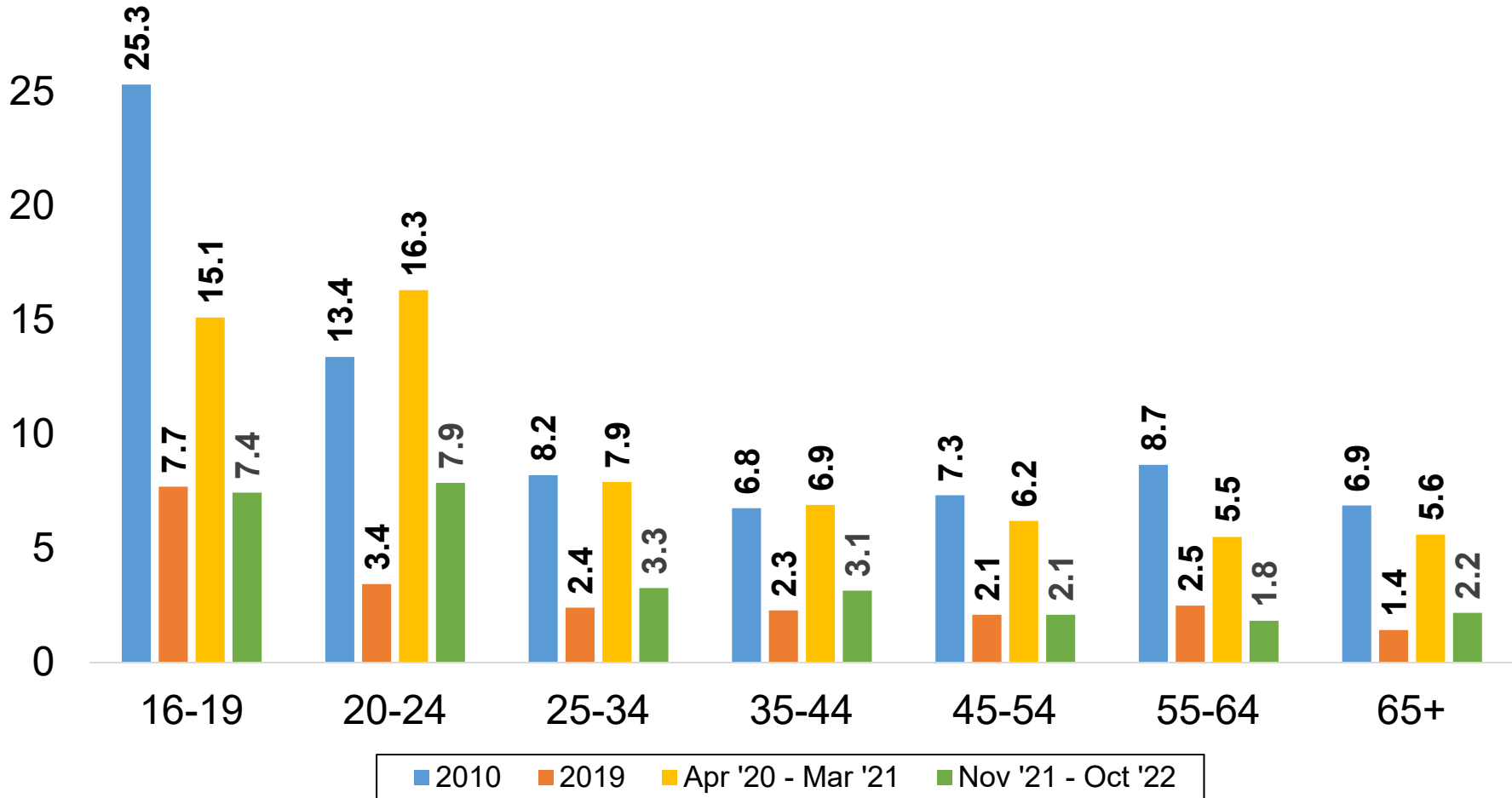


Source: Current Population Survey

Data not seasonally adjusted. Unemployment rates by educational attainment for individuals 25 years and over.

Unemployment Rates by Age Group (Most recent 12-month period available vs. select periods)

Percent
30



Source: Current Population Survey
Data not seasonally adjusted.

Colorado Labor Force Participation Rates and Employment-to-Population Ratios, Ages 25 to 54

(Most recent 12-month period available vs. select years)

Percent

88

86

84

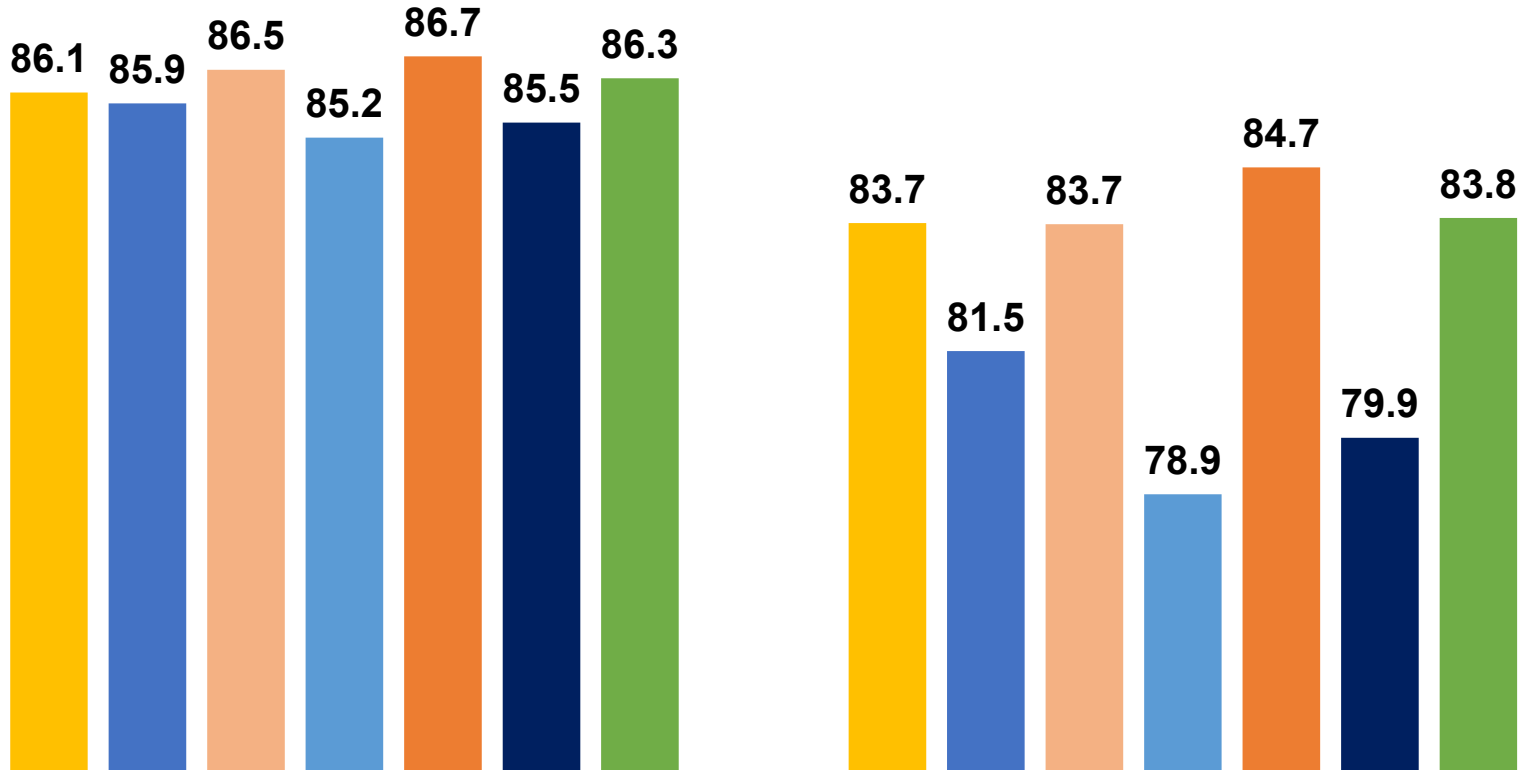
82

80

78

76

74



Labor Force Participation Rate

Employment-to-Population Ratio

■ 2001 ■ 2003 ■ 2006 ■ 2010 ■ 2019 ■ 2020 ■ Nov '21 - Oct '22

Source: Current Population Survey

Data not seasonally adjusted.

LABOR FORCE SUMMARY
COLORADO

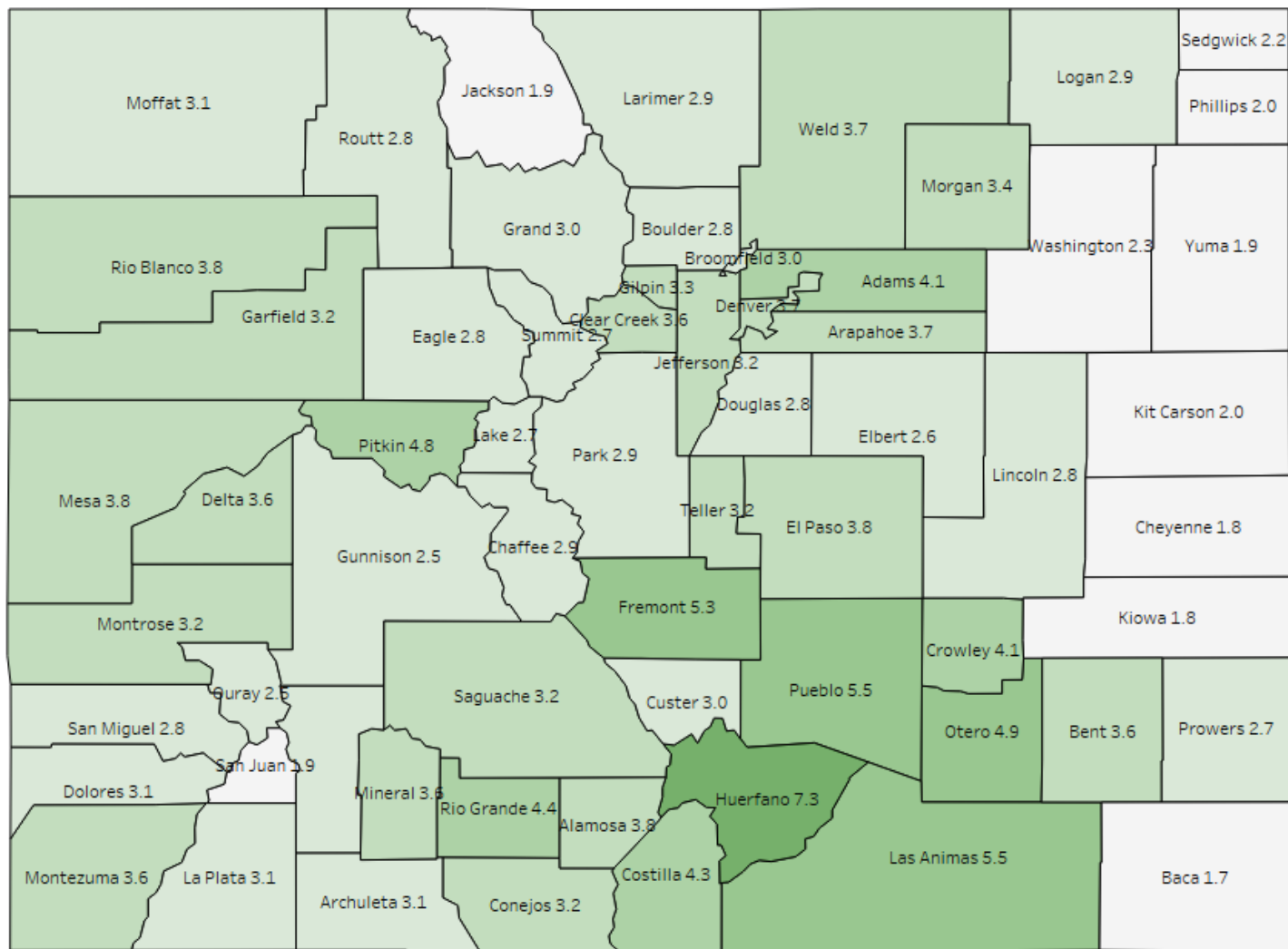
Preliminary Estimates for October 2022

LABOR FORCE DATA (VALUES IN THOUSANDS)					
SEASONALLY ADJUSTED:				Change from last:	
	Oct-22	Sep-22	Oct-21	Month	Year
Total Civilian Labor Force	3,256.9	3,255.0	3,169.8	1.9	87.1
Unemployment	116.4	109.6	143.5	6.8	-27.0
Unemployment Rate (%)	3.6	3.4	4.5	0.2	-0.9
Employment	3,140.4	3,145.4	3,026.3	-5.0	114.1
UNADJUSTED FOR SEASONALITY:				Change from last:	
	Oct-22	Sep-22	Oct-21	Month	Year
Total Civilian Labor Force	3,260.7	3,263.4	3,191.7	-2.8	69.0
Unemployment	114.1	104.5	141.4	9.6	-27.3
Unemployment Rate (%)	3.5	3.2	4.4	0.3	-0.9
Employment	3,146.6	3,159.0	3,050.3	-12.4	96.3

WAGE AND SALARY EMPLOYMENT DATA (VALUES IN THOUSANDS)					
SEASONALLY ADJUSTED:				Change from last:	
	Oct-22	Sep-22	Oct-21	Month	Year
Mining & Logging	20.5	20.2	19.5	0.3	1.0
Construction	187.2	184.6	177.5	2.6	9.7
Manufacturing	155.8	154.5	149.6	1.3	6.2
Trade, Transportation, & Utilities	502.8	500.8	490.0	2.0	12.8
Information	78.5	78.8	77.4	-0.3	1.1
Financial Activities	176.2	175.9	177.6	0.3	-1.4
Professional & Business Services	495.7	489.8	460.4	5.9	35.3
Educational & Health Services	361.3	359.9	347.7	1.4	13.6
Leisure & Hospitality	347.1	346.3	330.0	0.8	17.1
Other Services	123.6	122.5	114.2	1.1	9.4
Government	452.1	449.8	440.7	2.3	11.4
TOTAL NONAG	2,900.8	2,883.1	2,784.6	17.7	116.2
Labor Disputants	0.0	0.0	0.0	0.0	0.0
UNADJUSTED FOR SEASONALITY:				Change from last:	
	Oct-22	Sep-22	Oct-21	Month	Year
Mining & Logging	20.8	20.4	19.8	0.4	1.0
Construction	190.1	186.7	180.4	3.4	9.7
Manufacturing	156.1	155.3	150.0	0.8	6.1
Trade, Transportation, & Utilities	499.5	493.8	487.6	5.7	11.9
Information	78.5	78.6	77.4	-0.1	1.1
Financial Activities	176.3	175.0	178.1	1.3	-1.8
Professional & Business Services	500.1	492.1	464.1	8.0	36.0
Educational & Health Services	363.3	359.3	349.3	4.0	14.0
Leisure & Hospitality	336.5	341.5	318.9	-5.0	17.6
Other Services	124.5	123.3	114.6	1.2	9.9
Government	459.5	452.9	447.0	6.6	12.5
TOTAL NONAG	2,905.2	2,878.9	2,787.2	26.3	118.0
Labor Disputants	0.0	0.0	0.0	0.0	0.0

Source: Colorado Department of Labor & Employment; Bureau of Labor Statistics

County Unemployment Rates October 2022



Not Seasonally Adjusted Labor Force

	October 2022				September 2022			
	Labor Force	Employment	Unemployment	Rate	Labor force	Employment	Unemployment	Rate
Colorado	3,260,677	3,146,590	114,087	3.5	3,263,445	3,158,974	104,471	3.2
Metropolitan Statistical Area								
Boulder	204,609	198,952	5,657	2.8	206,151	201,039	5,112	2.5
Colorado Springs	373,887	359,663	14,224	3.8	375,711	362,529	13,182	3.5
Denver-Aurora-Lakewood	1,747,684	1,686,204	61,480	3.5	1,747,663	1,691,069	56,594	3.2
Fort Collins	215,669	209,355	6,314	2.9	215,582	209,795	5,787	2.7
Grand Junction	78,921	75,947	2,974	3.8	79,509	76,789	2,720	3.4
Greeley	171,232	164,950	6,282	3.7	169,846	164,039	5,807	3.4
Pueblo	79,345	74,977	4,368	5.5	79,496	75,469	4,027	5.1
Counties								
Adams	286,434	274,803	11,631	4.1	285,695	275,017	10,678	3.7
Alamosa	8,868	8,527	341	3.8	8,650	8,339	311	3.6
Arapahoe	380,363	366,419	13,944	3.7	380,616	367,755	12,861	3.4
Archuleta	7,458	7,229	229	3.1	7,390	7,180	210	2.8
Baca	2,208	2,171	37	1.7	2,092	2,058	34	1.6
Bent	2,043	1,970	73	3.6	1,903	1,830	73	3.8
Boulder	204,609	198,952	5,657	2.8	206,151	201,039	5,112	2.5
Broomfield	42,959	41,665	1,294	3.0	42,922	41,751	1,171	2.7
Chaffee	10,444	10,141	303	2.9	10,747	10,481	266	2.5
Cheyenne	1,162	1,141	21	1.8	1,088	1,070	18	1.7
Clear Creek	6,251	6,029	222	3.6	6,252	6,048	204	3.3
Conejos	4,320	4,180	140	3.2	4,153	4,020	133	3.2
Costilla	1,960	1,876	84	4.3	1,906	1,831	75	3.9
Crowley	1,451	1,392	59	4.1	1,438	1,381	57	4.0
Custer	2,533	2,457	76	3.0	2,548	2,482	66	2.6
Delta	14,196	13,687	509	3.6	14,057	13,587	470	3.3
Denver	442,470	425,959	16,511	3.7	442,831	427,413	15,418	3.5
Dolores	1,219	1,181	38	3.1	1,170	1,138	32	2.7
Douglas	209,945	204,018	5,927	2.8	209,950	204,610	5,340	2.5
Eagle	37,003	35,956	1,047	2.8	37,664	36,796	868	2.3
El Paso	360,454	346,661	13,793	3.8	362,137	349,361	12,776	3.5
Elbert	16,320	15,892	428	2.6	16,151	15,748	403	2.5
Fremont	15,584	14,757	827	5.3	15,868	15,110	758	4.8
Garfield	31,669	30,671	998	3.2	32,610	31,709	901	2.8
Gilpin	3,987	3,856	131	3.3	3,995	3,874	121	3.0
Grand	9,604	9,319	285	3.0	10,001	9,754	247	2.5
Gunnison	11,992	11,687	305	2.5	12,099	11,858	241	2.0
Hinsdale	495	481	14	2.8	542	531	11	2.0
Huerfano	2,704	2,507	197	7.3	2,647	2,469	178	6.7
Jackson	1,035	1,015	20	1.9	991	973	18	1.8
Jefferson	347,146	336,101	11,045	3.2	347,422	337,337	10,085	2.9
Kiowa	949	932	17	1.8	889	874	15	1.7
Kit Carson	4,293	4,205	88	2.0	4,009	3,934	75	1.9
La Plata	32,105	31,095	1,010	3.1	32,432	31,527	905	2.8
Lake	5,119	4,980	139	2.7	5,120	4,989	131	2.6
Larimer	215,669	209,355	6,314	2.9	215,582	209,795	5,787	2.7
Las Animas	6,518	6,161	357	5.5	6,493	6,187	306	4.7
Lincoln	2,366	2,300	66	2.8	2,280	2,215	65	2.9
Logan	10,943	10,623	320	2.9	10,595	10,317	278	2.6
Mesa	78,921	75,947	2,974	3.8	79,509	76,789	2,720	3.4
Mineral	390	376	14	3.6	412	399	13	3.2
Moffat	7,008	6,790	218	3.1	7,051	6,853	198	2.8
Montezuma	13,685	13,187	498	3.6	13,723	13,270	453	3.3
Montrose	23,173	22,420	753	3.2	23,037	22,343	694	3.0
Morgan	16,386	15,828	558	3.4	15,826	15,306	520	3.3
Otero	8,391	7,983	408	4.9	8,198	7,837	361	4.4
Ouray	3,055	2,980	75	2.5	3,076	3,007	69	2.2
Park	11,809	11,462	347	2.9	11,829	11,516	313	2.6
Phillips	2,664	2,612	52	2.0	2,434	2,387	47	1.9
Pitkin	11,001	10,468	533	4.8	11,220	10,887	333	3.0
Prowers	6,538	6,360	178	2.7	6,310	6,148	162	2.6
Pueblo	79,345	74,977	4,368	5.5	79,496	75,469	4,027	5.1
Rio Blanco	2,922	2,811	111	3.8	2,896	2,792	104	3.6
Rio Grande	5,627	5,379	248	4.4	5,442	5,221	221	4.1
Routt	15,719	15,276	443	2.8	15,923	15,543	380	2.4
Saguache	3,639	3,522	117	3.2	3,464	3,351	113	3.3
San Juan	718	704	14	1.9	793	782	11	1.4
San Miguel	6,528	6,344	184	2.8	6,612	6,479	133	2.0
Sedgwick	1,229	1,202	27	2.2	1,184	1,160	24	2.0
Summit	21,475	20,902	573	2.7	22,241	21,748	493	2.2
Teller	13,433	13,002	431	3.2	13,574	13,168	406	3.0
Washington	2,874	2,808	66	2.3	2,702	2,639	63	2.3
Weld	171,232	164,950	6,282	3.7	169,846	164,039	5,807	3.4
Yuma	6,062	5,945	117	1.9	5,562	5,454	108	1.9

All estimates made in cooperation with the U.S. Department of Labor, Bureau of Labor Statistics and adjusted to Current Population Survey data. Estimates have been revised to incorporate population data from the American Community Survey.

Not Seasonally Adjusted Labor Force

	October 2022				October 2021			
	Labor Force	Employment	Unemployment	Rate	Labor force	Employment	Unemployment	Rate
Colorado	3,260,677	3,146,590	114,087	3.5	3,191,726	3,050,329	141,397	4.4
Metropolitan Statistical Area								
Boulder	204,609	198,952	5,657	2.8	198,396	191,588	6,808	3.4
Colorado Springs	373,887	359,663	14,224	3.8	365,718	348,650	17,068	4.7
Denver-Aurora-Lakewood	1,747,684	1,686,204	61,480	3.5	1,698,027	1,620,317	77,710	4.6
Fort Collins	215,669	209,355	6,314	2.9	210,743	203,018	7,725	3.7
Grand Junction	78,921	75,947	2,974	3.8	78,120	74,569	3,551	4.5
Greeley	171,232	164,950	6,282	3.7	169,238	161,385	7,853	4.6
Pueblo	79,345	74,977	4,368	5.5	78,583	73,133	5,450	6.9
Counties								
Adams	286,434	274,803	11,631	4.1	279,002	264,246	14,756	5.3
Alamosa	8,868	8,527	341	3.8	8,990	8,604	386	4.3
Arapahoe	380,363	366,419	13,944	3.7	370,126	351,976	18,150	4.9
Archuleta	7,458	7,229	229	3.1	7,637	7,352	285	3.7
Baca	2,208	2,171	37	1.7	2,311	2,273	38	1.6
Bent	2,043	1,970	73	3.6	2,044	1,937	107	5.2
Boulder	204,609	198,952	5,657	2.8	198,396	191,588	6,808	3.4
Broomfield	42,959	41,665	1,294	3.0	41,513	40,020	1,493	3.6
Chaffee	10,444	10,141	303	2.9	10,323	9,999	324	3.1
Cheyenne	1,162	1,141	21	1.8	1,207	1,186	21	1.7
Clear Creek	6,251	6,029	222	3.6	6,082	5,796	286	4.7
Conejos	4,320	4,180	140	3.2	4,399	4,243	156	3.5
Costilla	1,960	1,876	84	4.3	1,985	1,891	94	4.7
Crowley	1,451	1,392	59	4.1	1,512	1,442	70	4.6
Custer	2,533	2,457	76	3.0	2,377	2,299	78	3.3
Delta	14,196	13,687	509	3.6	14,852	14,240	612	4.1
Denver	442,470	425,959	16,511	3.7	430,687	409,184	21,503	5.0
Dolores	1,219	1,181	38	3.1	1,256	1,217	39	3.1
Douglas	209,945	204,018	5,927	2.8	202,696	195,999	6,697	3.3
Eagle	37,003	35,956	1,047	2.8	36,053	34,707	1,346	3.7
El Paso	360,454	346,661	13,793	3.8	352,601	336,055	16,546	4.7
Elbert	16,320	15,892	428	2.6	15,888	15,399	489	3.1
Fremont	15,584	14,757	827	5.3	15,917	14,991	926	5.8
Garfield	31,669	30,671	998	3.2	31,880	30,671	1,209	3.8
Gilpin	3,987	3,856	131	3.3	3,893	3,707	186	4.8
Grand	9,604	9,319	285	3.0	9,308	8,990	318	3.4
Gunnison	11,992	11,687	305	2.5	11,975	11,635	340	2.8
Hinsdale	495	481	14	2.8	467	457	10	2.1
Huerfano	2,704	2,507	197	7.3	2,755	2,573	182	6.6
Jackson	1,035	1,015	20	1.9	1,073	1,049	24	2.2
Jefferson	347,146	336,101	11,045	3.2	336,720	322,946	13,774	4.1
Kiowa	949	932	17	1.8	1,038	1,014	24	2.3
Kit Carson	4,293	4,205	88	2.0	4,569	4,450	119	2.6
La Plata	32,105	31,095	1,010	3.1	32,642	31,359	1,283	3.9
Lake	5,119	4,980	139	2.7	4,983	4,802	181	3.6
Larimer	215,669	209,355	6,314	2.9	210,743	203,018	7,725	3.7
Las Animas	6,518	6,161	357	5.5	6,733	6,356	377	5.6
Lincoln	2,366	2,300	66	2.8	2,490	2,409	81	3.3
Logan	10,943	10,623	320	2.9	11,480	11,089	391	3.4
Mesa	78,921	75,947	2,974	3.8	78,120	74,569	3,551	4.5
Mineral	390	376	14	3.6	410	394	16	3.9
Moffat	7,008	6,790	218	3.1	7,332	7,067	265	3.6
Montezuma	13,685	13,187	498	3.6	13,655	13,086	569	4.2
Montrose	23,173	22,420	753	3.2	23,174	22,285	889	3.8
Morgan	16,386	15,828	558	3.4	17,047	16,370	677	4.0
Otero	8,391	7,983	408	4.9	8,722	8,279	443	5.1
Ouray	3,055	2,980	75	2.5	2,886	2,794	92	3.2
Park	11,809	11,462	347	2.9	11,420	11,044	376	3.3
Phillips	2,664	2,612	52	2.0	2,775	2,718	57	2.1
Pitkin	11,001	10,468	533	4.8	11,029	10,445	584	5.3
Prowers	6,538	6,360	178	2.7	6,710	6,471	239	3.6
Pueblo	79,345	74,977	4,368	5.5	78,583	73,133	5,450	6.9
Rio Blanco	2,922	2,811	111	3.8	3,070	2,936	134	4.4
Rio Grande	5,627	5,379	248	4.4	5,828	5,547	281	4.8
Routt	15,719	15,276	443	2.8	15,963	15,406	557	3.5
Saguache	3,639	3,522	117	3.2	3,755	3,588	167	4.4
San Juan	718	704	14	1.9	644	629	15	2.3
San Miguel	6,528	6,344	184	2.8	5,906	5,679	227	3.8
Sedgwick	1,229	1,202	27	2.2	1,283	1,243	40	3.1
Summit	21,475	20,902	573	2.7	21,046	20,305	741	3.5
Teller	13,433	13,002	431	3.2	13,117	12,595	522	4.0
Washington	2,874	2,808	66	2.3	3,092	3,013	79	2.6
Weld	171,232	164,950	6,282	3.7	169,238	161,385	7,853	4.6
Yuma	6,062	5,945	117	1.9	6,315	6,179	136	2.2

All estimates made in cooperation with the U.S. Department of Labor, Bureau of Labor Statistics and adjusted to Current Population Survey data. Estimates have been revised to incorporate population data from the American Community Survey.
 Colorado Department of Labor and Employment 2022



Colorado LMI Data Overview

October 2022

Employment					
	Oct-22	Sep-22	Oct-21	Change from previous:	
				Period	Year
Nonfarm Wage and Salary Employment (SA)	2,900,800	2,883,100	2,784,600	17,700	116,200
Total Resident Employment (SA)	3,140,400	3,145,400	3,026,300	(5,000)	114,100
	Q1 2022	Q4 2021	Q1 2021		
UI Covered Total Employment	2,756,934	2,763,451	2,615,044	(6,517)	141,890
UI Covered Private Employment	2,332,857	2,336,770	2,200,827	(3,913)	132,030

Unemployment					
	Oct-22	Sep-22	Oct-21	Change from previous:	
				Period	Year
Unemployment (SA)	116,400	109,600	143,500	6,800	(27,100)
Percent Unemployed (SA)	3.6%	3.4%	4.5%	0.2	(0.9)
	Oct-22	Sep-22	Oct-21		
Initial Claims	11,650	9,572	16,667	2,078	(5,017)
Continued Weeks Claimed	84,493	80,326	134,068	4,167	(49,575)

Wages and Earnings					
	Q1 2022	Q4 2021	Q1 2021	Change from previous:	
				Period	Year
Total Average Weekly Wage	\$1,455	\$1,484	\$1,337	(\$29)	\$118
Private Average Weekly Wage	\$1,494	\$1,510	\$1,365	(\$16)	\$129
	Oct-22	Sep-22	Oct-21		
Average Weekly Earnings (Construction)	\$1,216.01	\$1,201.64	\$1,182.66	\$14.37	\$33.35
Average Weekly Earnings (Manufacturing)	\$1,121.10	\$1,136.69	\$1,064.65	(\$15.59)	\$56.45

CO Unemployment Insurance Trust Fund					
	Sep-22	Aug-22	Sep-21	Change from previous:	
				Period	Year
Employer Contributions	\$3,950,398	\$121,096,708	\$5,191,822	(\$117,146,309)	(\$1,241,424)
Benefits Paid	\$29,908,426	\$32,352,796	\$54,325,771	(\$2,444,370)	(\$24,417,344)
Average Weekly Benefit Amount	\$504.09	\$488.67	\$395.32	\$15.42	\$108.77
Duration (weeks)	11.16	11.60	18.53	(0.44)	(7.37)
Outstanding Title XII Loan Balance	\$33,089,861	\$33,089,861	\$1,014,167,919	\$0	(981,078,058)

Consumer Price Index for All Urban Consumers					
	Sep-22	Jul-22	Sep-21	% Change from previous:	
				Period	Year
Not seasonally adjusted					
Denver-Aurora-Lakewood	308.211	308.728	286.186	-0.2%	7.7%
US City Average	296.808	296.276	274.310	0.2%	8.2%

(Most current data available for all categories)