

PRESS RELEASE

Colorado Department of Labor and Employment • 633 17th Street, Suite 1200 • Denver, CO 80202 • (303) 318-8004 • Fax: (303) 318-8070

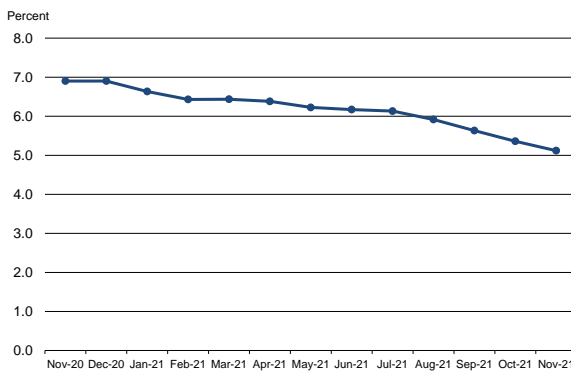
For Immediate Release

Date: December 17, 2021/ 8:00 A.M.
Contact: Office of Government and Public Relations
Email: cdle_pr@state.co.us
Web: <http://www.colmigateway.com>

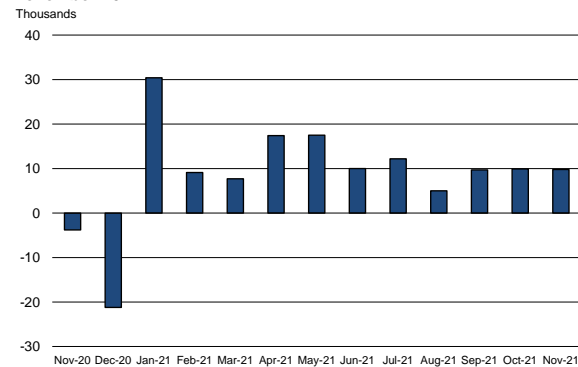
Colorado Employment Situation – November 2021

9,800 Nonfarm Payroll Jobs Added in November; Unemployment Rate Declines to 5.1%

Colorado unemployment rate, seasonally adjusted
November 2020 - November 2021



Colorado nonfarm payroll employment over-the-month
change, seasonally adjusted, November 2020 -
November 2021



Household survey data

According to the survey of households, Colorado's seasonally adjusted **unemployment rate** fell three-tenths of a percentage point in November to 5.1 percent. The national unemployment rate declined by four-tenths of a percentage point to 4.2 percent.

Other highlights from the household survey:

- Colorado's **labor force** increased by 3,100 in November to 3,199,900. The share of Coloradans participating in the labor force held at 68.2 percent last month. The state continues to experience a faster rate of recovery in the participation rate than the U.S.
- The **number of individuals employed** in Colorado grew by 10,700 in November to 3,036,100, which represents 64.7 percent of the state's 16+ population. Colorado's employment-to-population ratio has trended upward over the past three months.
- The **Colorado counties** with the highest unemployment rates in November were: San Miguel (7.6%), Huerfano (6.8%), Pueblo (6.6%), Pitkin (6.1%), and Fremont (5.8%). County-level unemployment rates are not seasonally adjusted and are directly comparable to Colorado's November unadjusted rate of 4.4 percent.

Establishment survey data

Employers in Colorado added 9,800 **nonfarm payroll jobs** from October to November for a total of 2,765,400 jobs, according to the survey of business establishments. Private sector payroll jobs increased 9,400 and government added 400 jobs. Over the past 19 months, Colorado has gained back 322,200 of the 375,800 nonfarm payroll jobs lost between February and April of last year. That translates to a **job recovery rate** of 85.7 percent, which exceeds the U.S. rate of 82.5 percent.

Other highlights from the establishment survey:

- **October estimates** were revised down to 2,755,600, and the over the month change from September to October was a gain of 9,900 rather than the originally estimated increase of 10,600 (monthly revisions are based on additional responses from businesses and government agencies since the last published estimates).
- **Private industry sectors with significant job gains** in November were: professional and business services (~3,900), education and health services (~2,000), financial activities (~1,800), other services (~1,400), and trade, transportation, and utilities (~1,100). Significant over the month private sector **job loss** occurred in leisure and hospitality (~1,700).
- **Since November 2020**, nonfarm payroll jobs have increased 117,500, with the private sector growing by 104,800 jobs and government adding an additional 12,700 jobs. The largest **private sector job gains** were in leisure and hospitality (~50,700), professional and business services (~25,200), and trade, transportation, and utilities (~15,700). During that same period, construction (~1,400) **payroll jobs declined**. Colorado's **rate of job growth** over the past year is 4.4 percent, compared to the U.S. rate of 4.1 percent.
- Over the year, the **average workweek** for all Colorado employees on private nonfarm payrolls decreased from 34.3 to 33.1 hours, while **average hourly earnings** increased from \$31.27 to \$33.05, over two dollars more than the national average hourly earnings of \$31.03.

###

All Colorado estimates from the establishment and household surveys, including greater geographic detail, are available at: <http://www.colmigateway.com>. Estimates for all states and the nation are available at: <http://www.bls.gov>.

The **December 2021 Colorado Employment Situation** will be released at 8:00 AM on Friday, January 21, 2022. The full schedule of release dates for calendar year 2021 estimates is available at <http://www.colmigateway.com>.

###

Technical Notes

This release provides information on industry employment and labor force statistics for November 2021, the most current estimates available from the Colorado Department of Labor and Employment. The reference period for the establishment and household surveys was the pay period or week that includes the 12th of the month. Therefore, this release provides an estimate of Colorado's employment situation as vaccination rates among the adult population continued to increase and pandemic-related restrictions were relaxed for businesses across the state. Additionally, the November reference week overlaps a period in which COVID-19 case rates for Colorado and the nation remained elevated compared to earlier in the year. For information on Colorado unemployment insurance claims activity and related statistics, visit www.colmigateway.com. For information regarding impacts to Bureau of Labor Statistics data collection and processing during the pandemic, go to www.bls.gov/bls/bls-covid-19-questions-and-answers.htm.

The unemployment rate, labor force, labor force participation, total employment and the number of unemployed are based on a survey of households. The total employment estimate derived from this survey is intended to measure the number of people employed.

Nonfarm payroll jobs estimates are based on a survey of business establishments and government agencies, and are intended to measure the number of jobs, not the number of people employed. Other series based on this survey include private sector average weekly hours, average hourly earnings and average weekly earnings.

The business establishment survey covers about seven times the number of households surveyed and is therefore considered a more reliable indicator of economic conditions. Because the estimates are based on two separate surveys, one measuring jobs by worksite and the other measuring persons employed and unemployed by household, estimates based on these surveys may provide seemingly conflicting results.

###

Supplemental information available in following pages

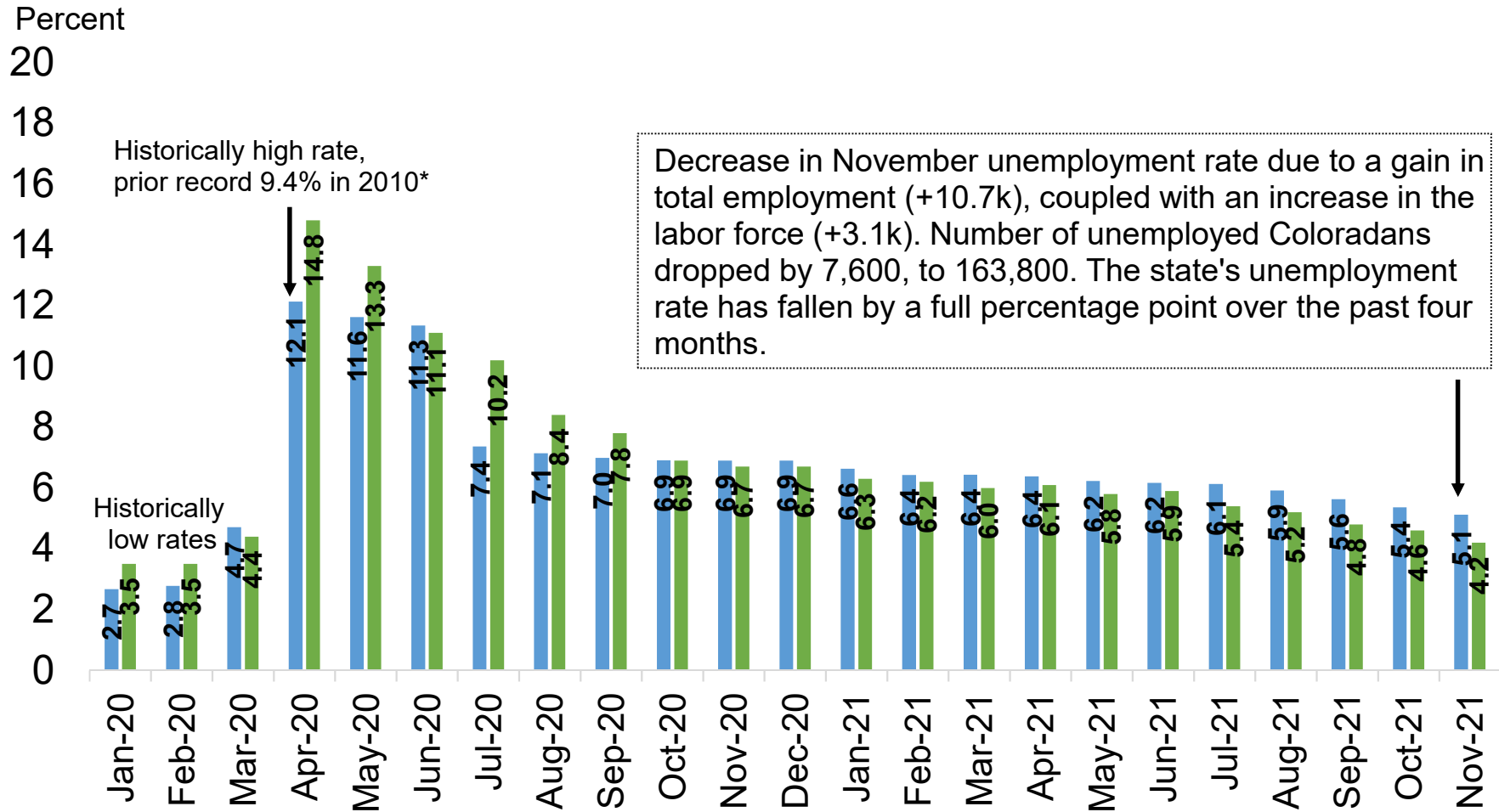
NOVEMBER 2021

EMPLOYMENT SITUATION SUPPLEMENTAL CHARTS

DECEMBER 17, 2021

This provides information on industry employment and labor force statistics, derived from surveys of business establishments and households. The reference period for these surveys is the pay period or week that includes the 12th of the month. The reference week for November was specifically November 7th – November 13th.

U.S. and Colorado Unemployment Rates Continue Rapid Decline in November



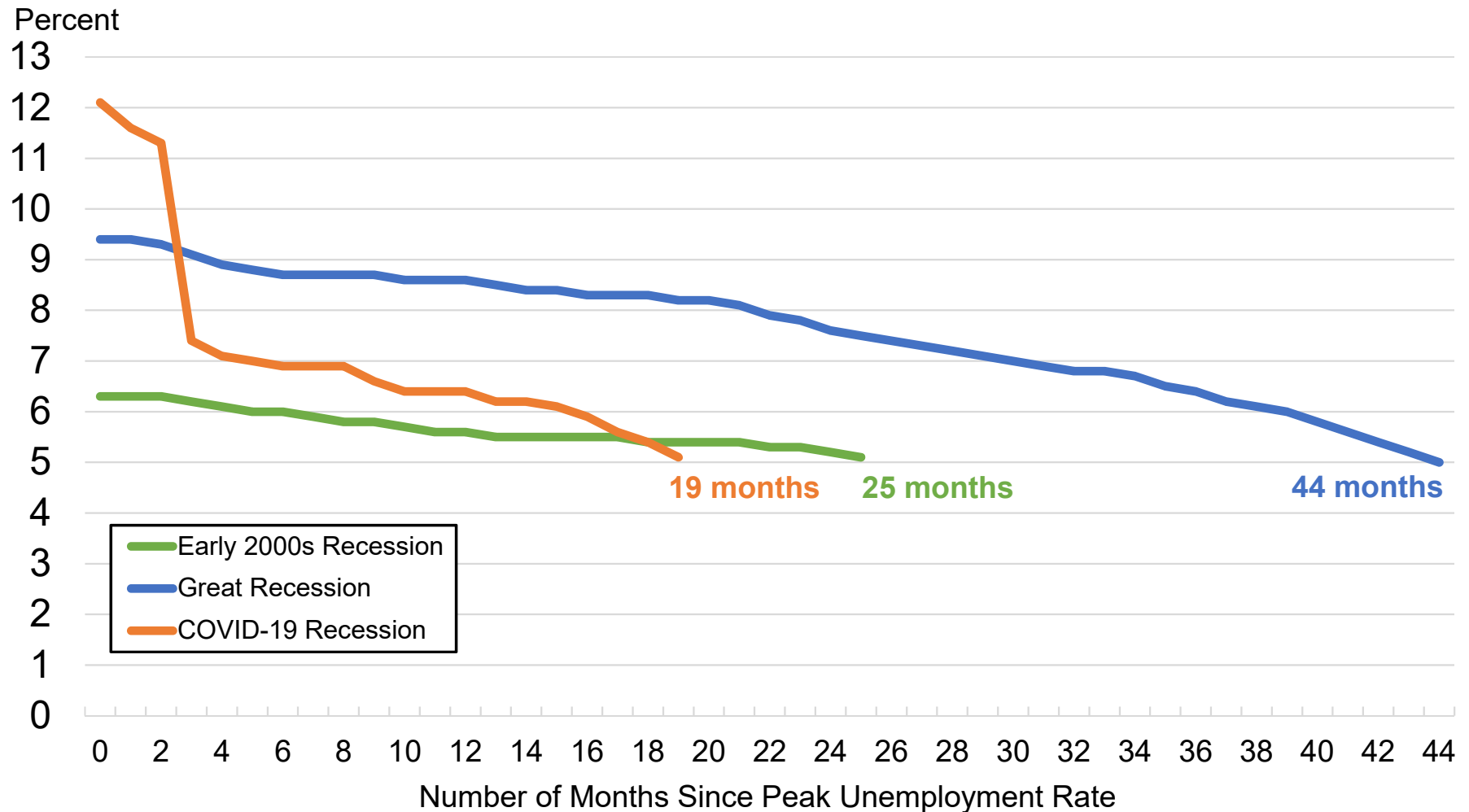
Source: Colorado Department of Labor and Employment; Bureau of Labor Statistics

Data seasonally adjusted

*Note: starting 2021, a new methodology is being used in the calculation of state labor force statistics. This caused revisions of prior year's data back to 1976. Colorado's peak unemployment rate during the Great Recession is now 9.4%, rather than the previously published 8.9%. For more information: <https://www.bls.gov/lau/launews1.htm>

■ Colorado ■ U.S.

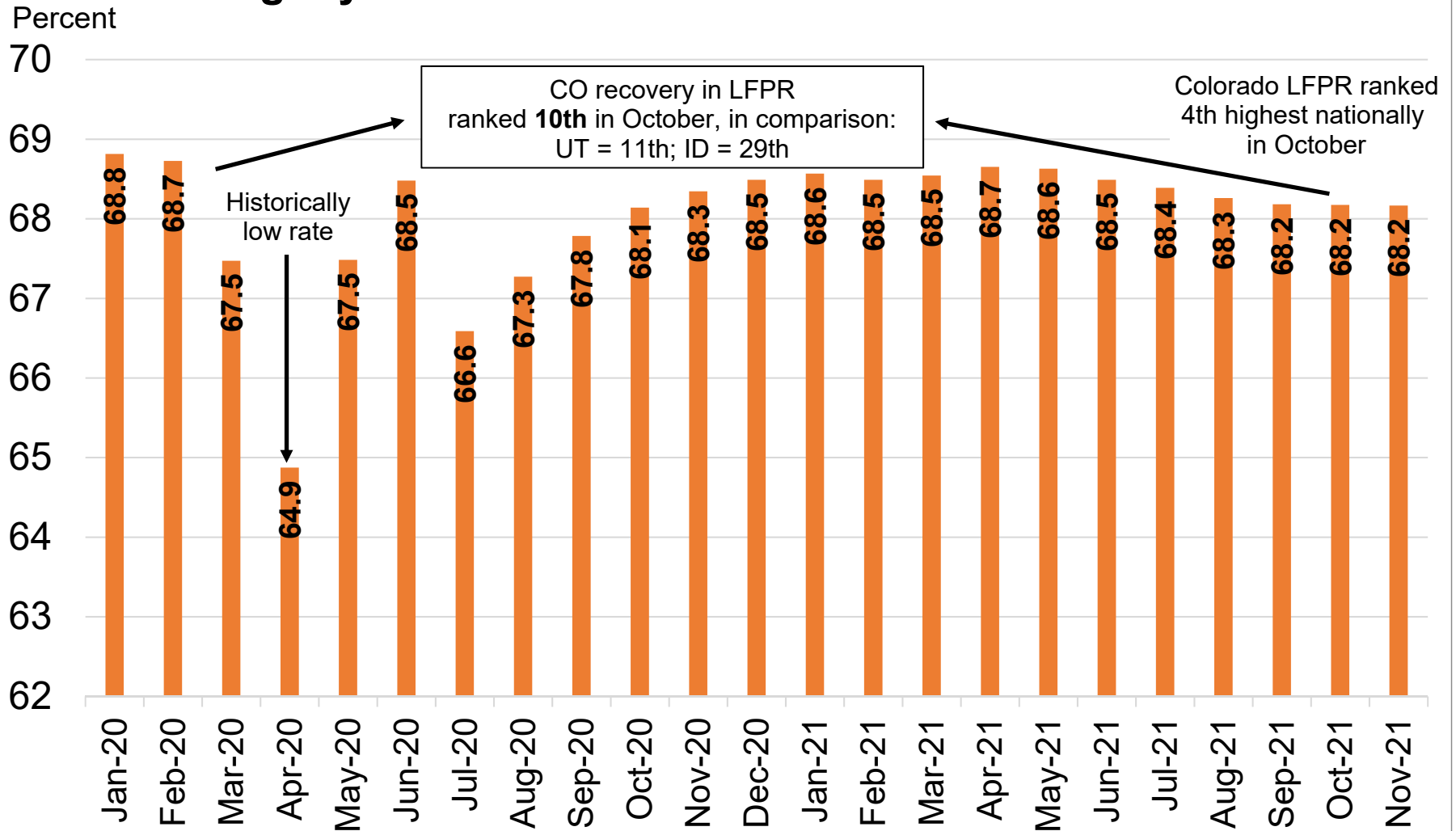
Number of Months for Colorado's Unemployment Rate to Fall from Peak Rate to Less Than 5.2% Over Last Three Recessions



Source: Colorado Department of Labor and Employment; Bureau of Labor Statistics

Data seasonally adjusted. Peak Colorado unemployment rate for early 2000s recession was 6.3 percent in May 2003; Great Recession peak was 9.4 percent in October 2010; and COVID-19 recession peak was 12.1 percent in April 2020.

Colorado's Labor Force Participation Rate Remains Slightly Below Pre-Pandemic Rate of 68.7 Percent

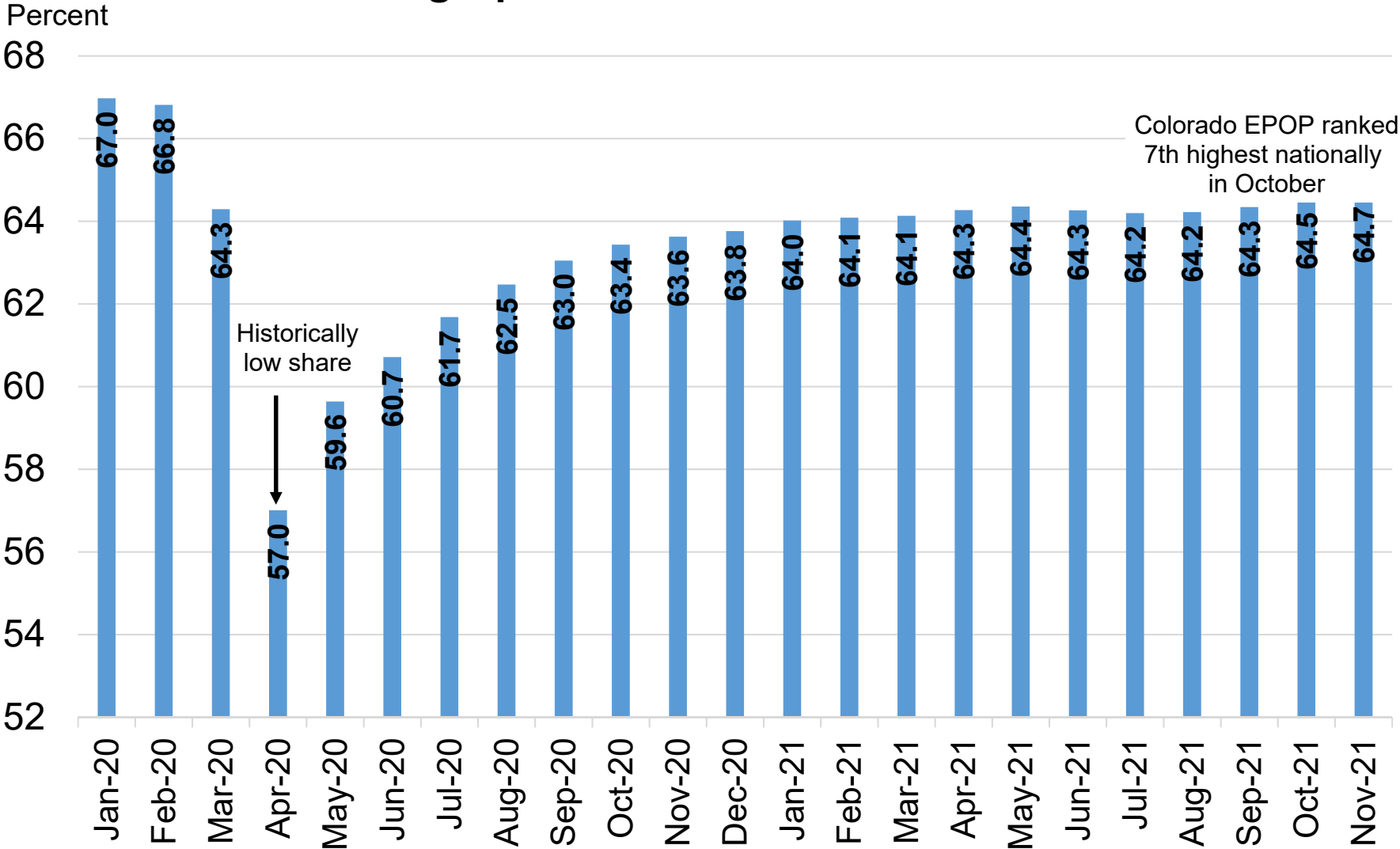


Source: Colorado Department of Labor and Employment; Bureau of Labor Statistics

Data seasonally adjusted. Estimates share of Colorado's 16+ population that is in the labor force in a given month.

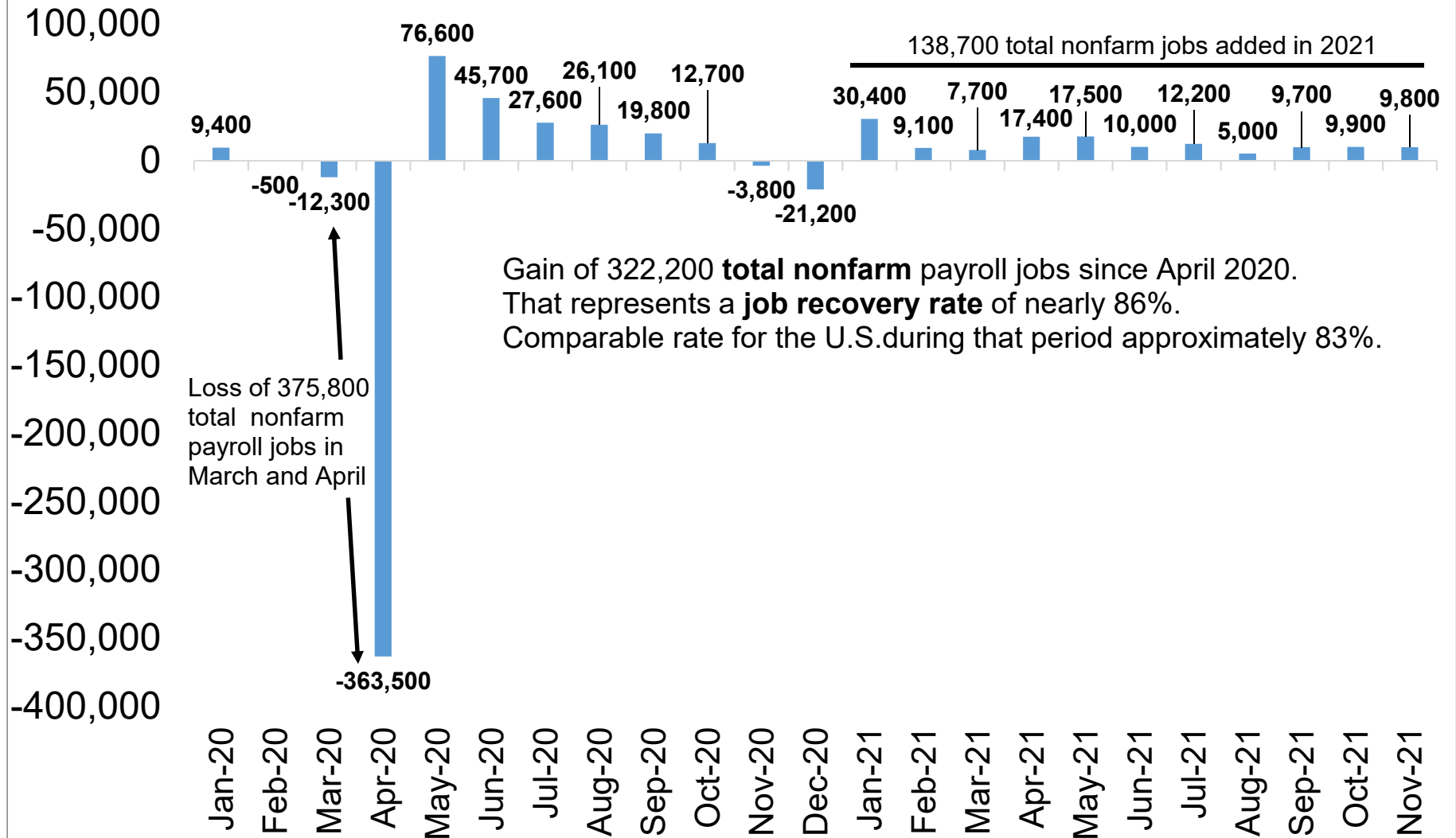
For further information on labor force definitions, go here: <https://www.bls.gov/lau/laufaq.htm>

Colorado's Employment-to-Population Ratio Trending Upward Over Past Three Months



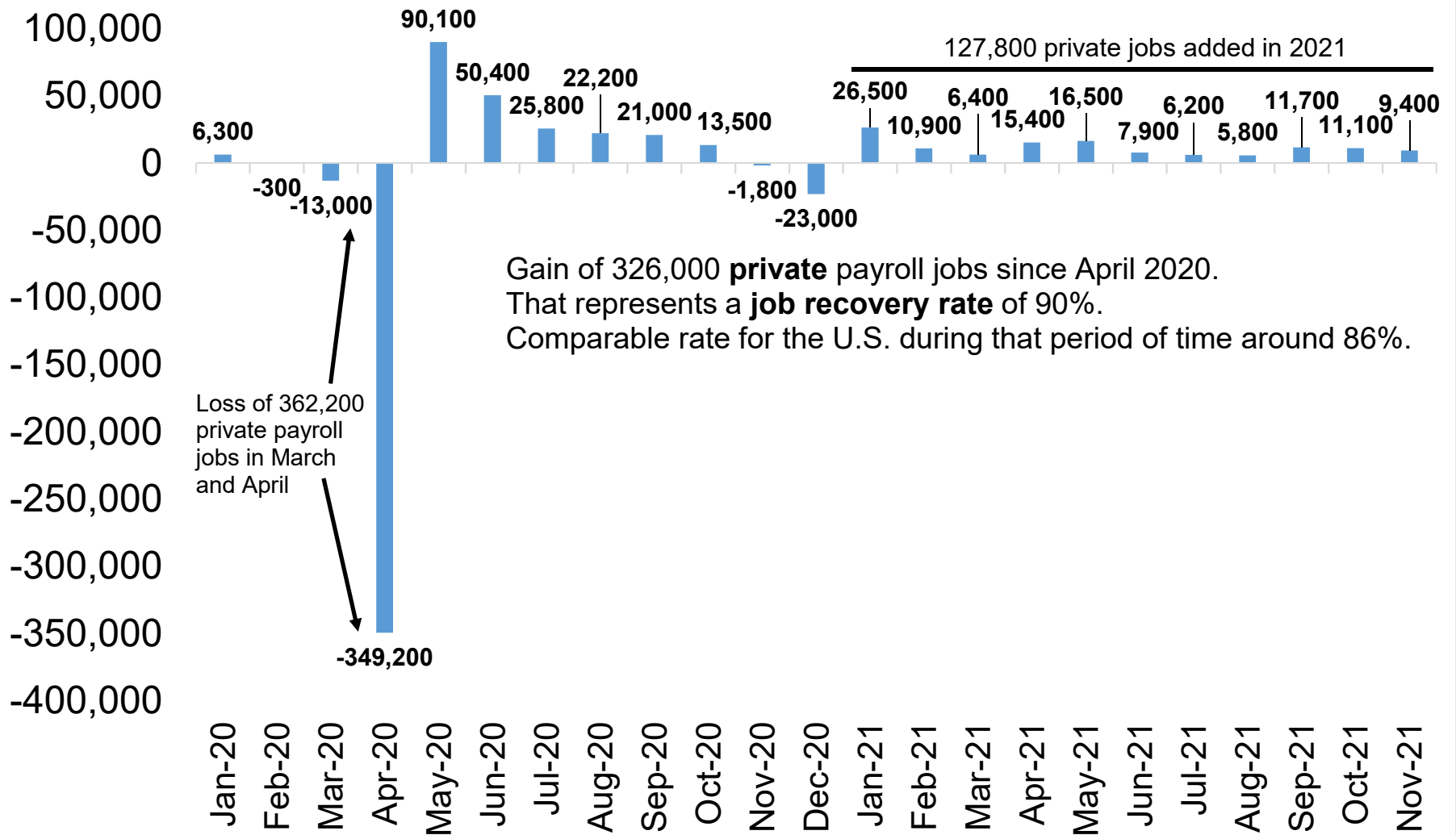
Source: Colorado Department of Labor and Employment; Bureau of Labor Statistics
Data seasonally adjusted. Estimates share of Colorado's 16+ population that is employed in a given month.

Colorado Added 9,800 Total Nonfarm Jobs in November; October Payroll Figures Revised Down 700



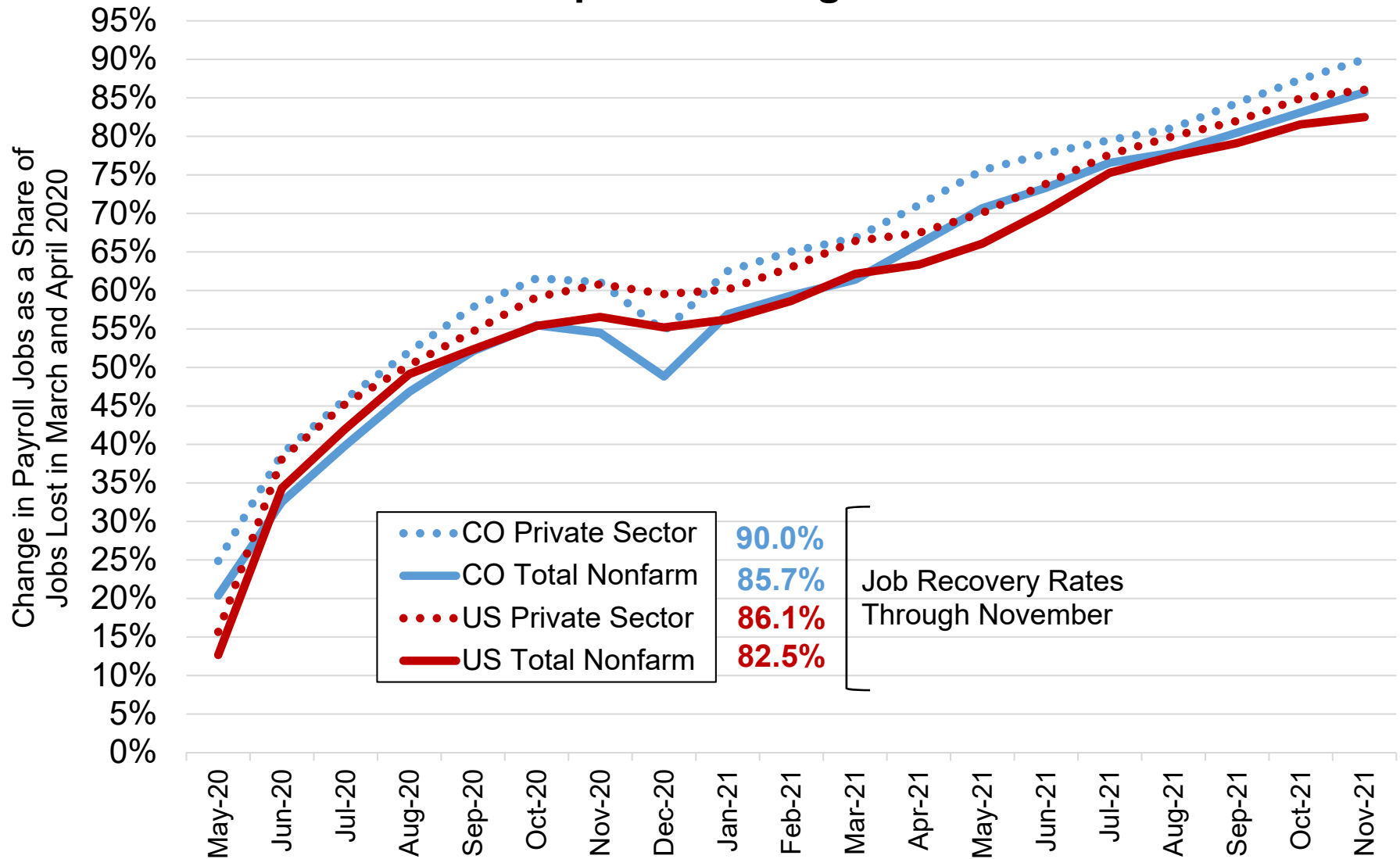
Source: Colorado Department of Labor and Employment; Bureau of Labor Statistics
Data seasonally adjusted

9,400 Private Sector Jobs Added in November; October Figures Revised Up 1,100



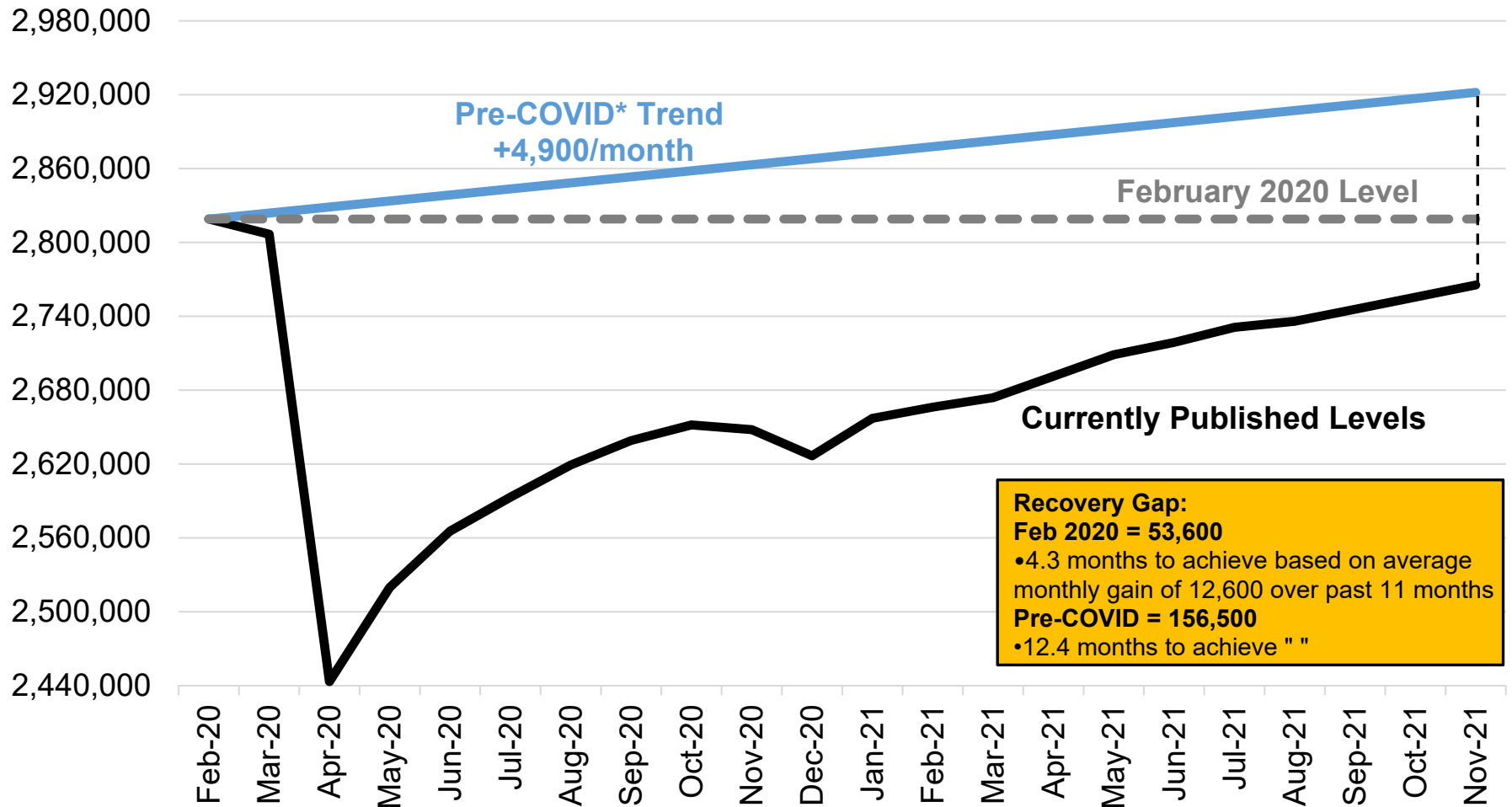
Source: Colorado Department of Labor and Employment; Bureau of Labor Statistics
Data seasonally adjusted

The National and Colorado Rates of Job Recovery Continue to Improve Through Late Autumn



Source: Colorado Department of Labor and Employment; Bureau of Labor Statistics
Data seasonally adjusted

Colorado Total Nonfarm Employment and the Gap Between Different Measures of Recovery Baselines

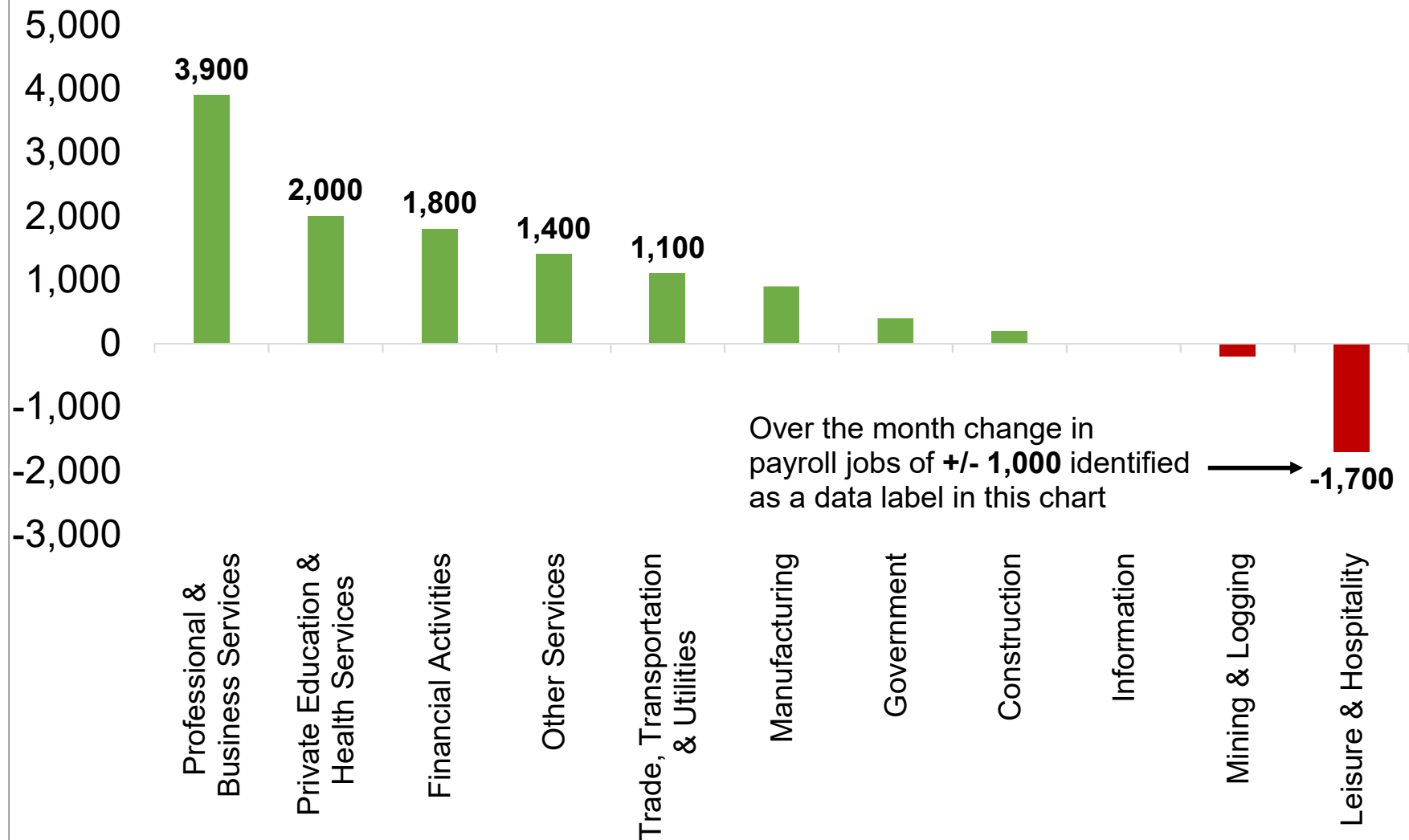


Source: Colorado Department of Labor and Employment; Bureau of Labor Statistics

Data seasonally adjusted

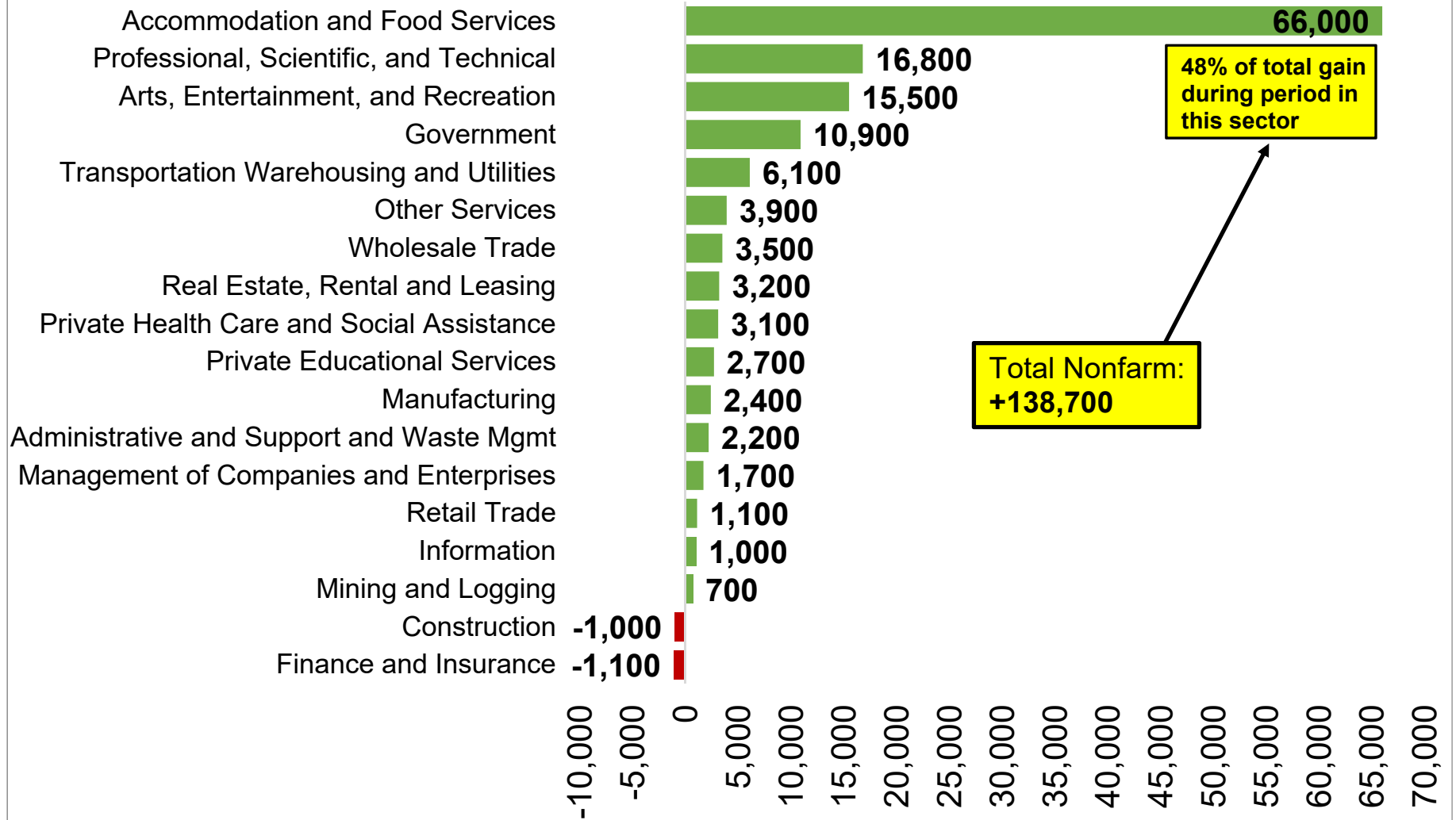
*Note: the **blue line** represents the trendline in the level of total nonfarm employment if the 2019 average monthly gain of 4,900 payroll jobs had held constant. This can be used as a baseline if no pandemic-related recession had occurred and job growth had continued at an uninterrupted pace.

Several Industries Had Sizeable Job Gains in November, While Leisure and Hospitality Payrolls Declined



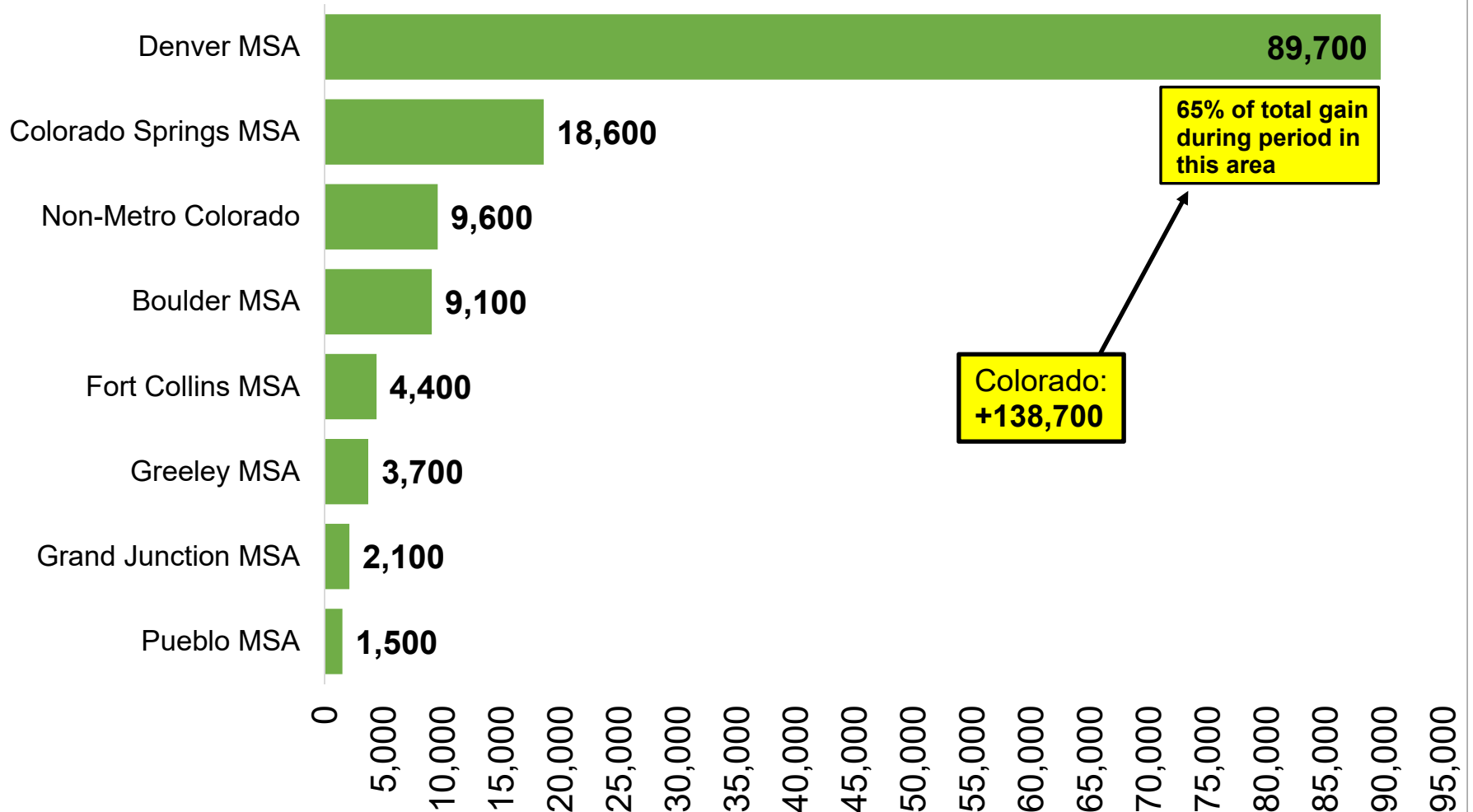
Source: Colorado Department of Labor and Employment; Bureau of Labor Statistics
Data seasonally adjusted

Change in Payroll Jobs First Eleven Months of 2021, by Industry Sector



Source: Colorado Department of Labor and Employment; Bureau of Labor Statistics
Data seasonally adjusted

Change in Payroll Jobs First Eleven Months of 2021, by Colorado Substate Area

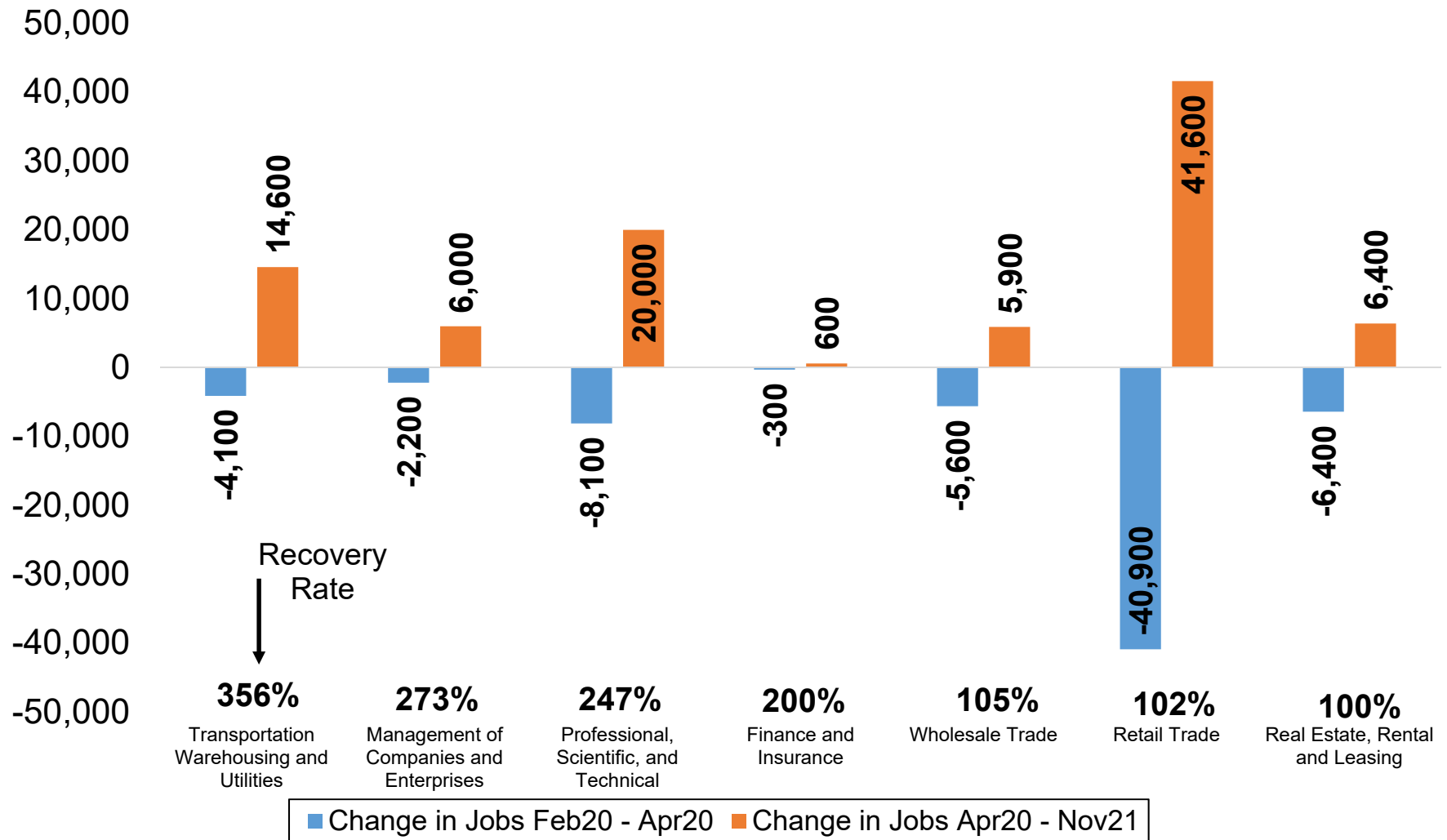


Source: Colorado Department of Labor and Employment; Bureau of Labor Statistics

Data seasonally adjusted

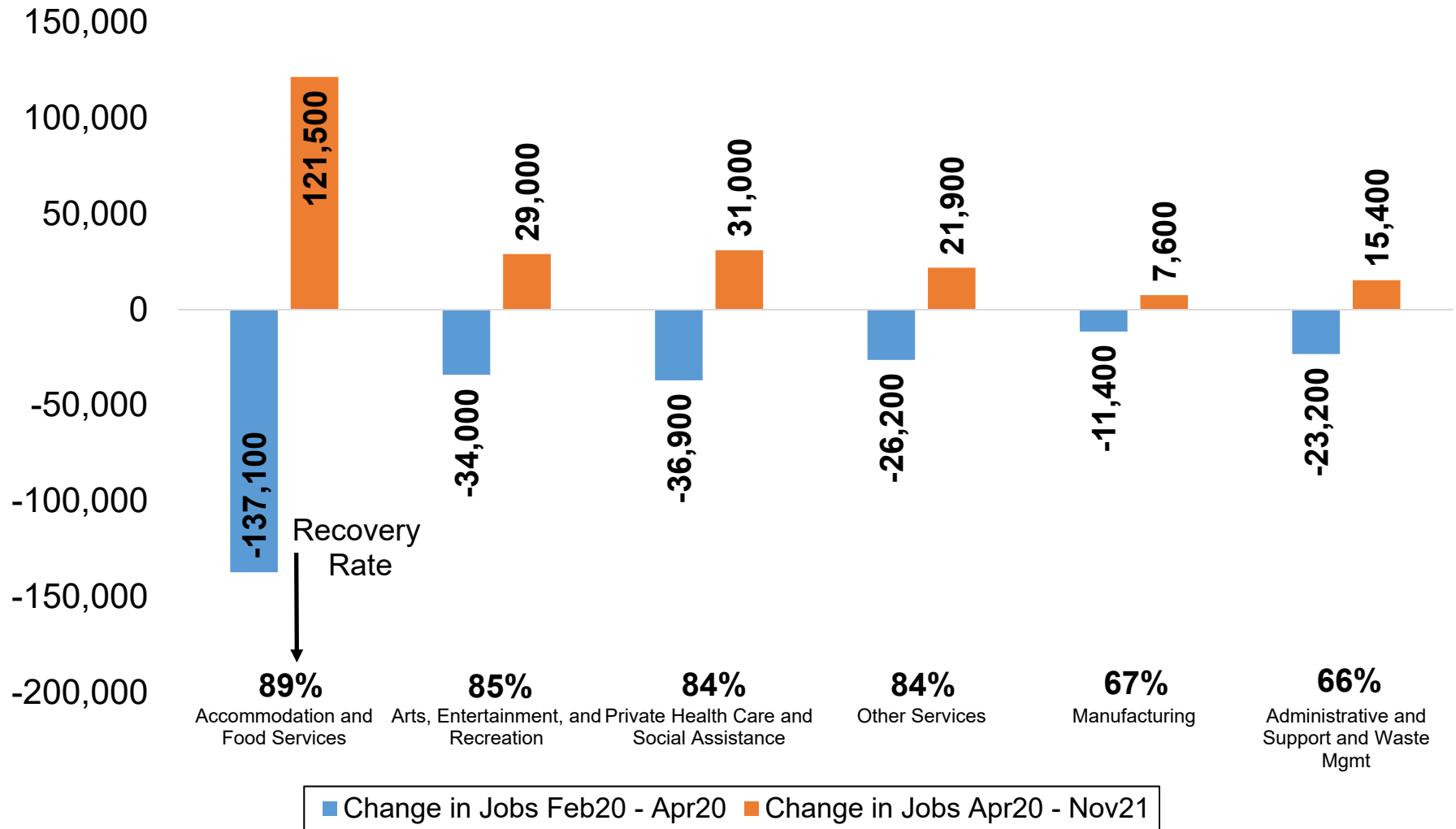
Note: MSA = Metropolitan Statistical Area; Non-Metro Colorado = residual of state that is not an MSA (47 counties)

Colorado Industry Sectors with the Fastest Payroll Job Recovery Rates



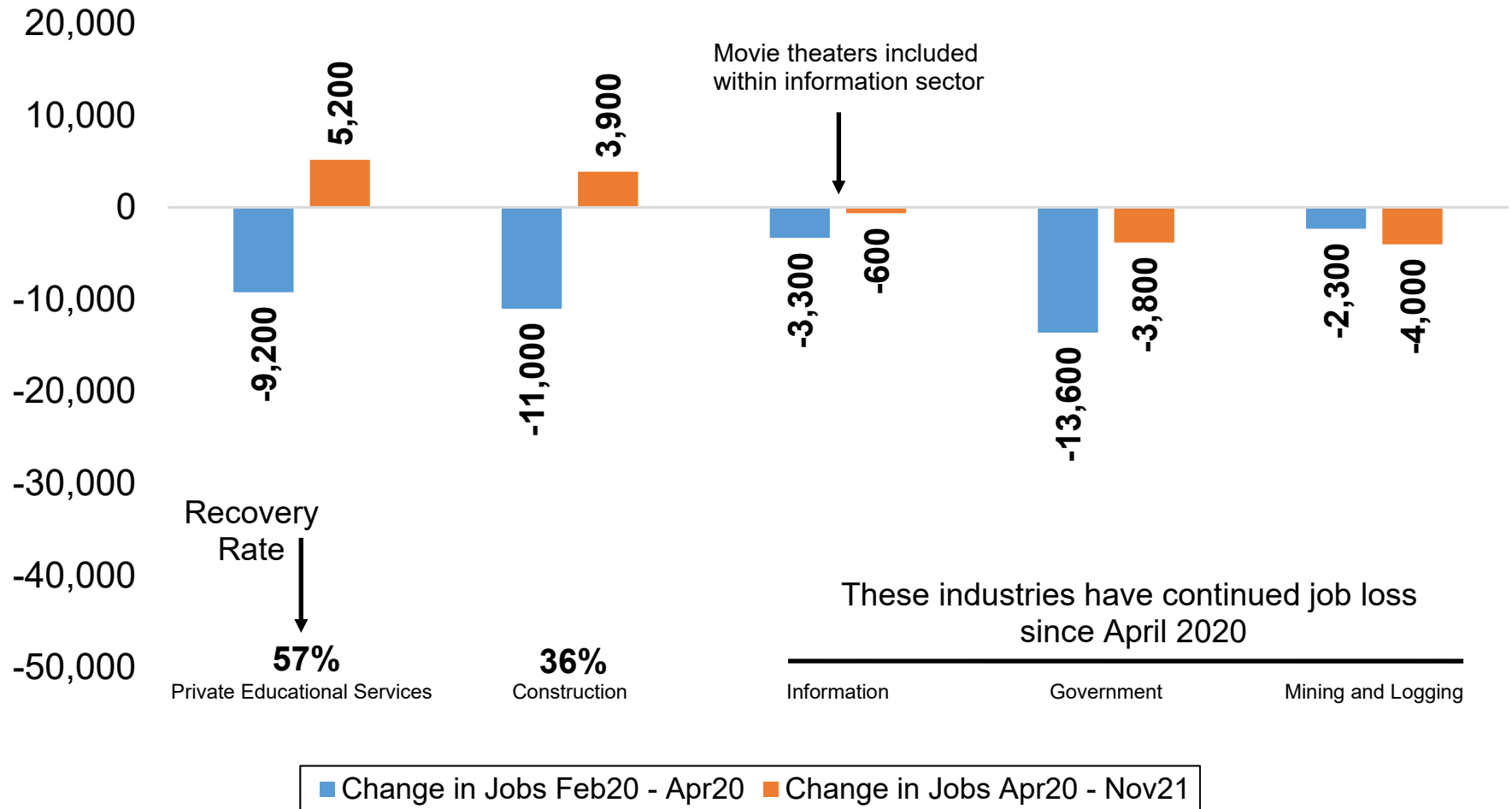
Source: Colorado Department of Labor and Employment; Bureau of Labor Statistics
Data seasonally adjusted

Colorado Industry Sectors with Payroll Job Recovery Rates Between 66 and 89 Percent



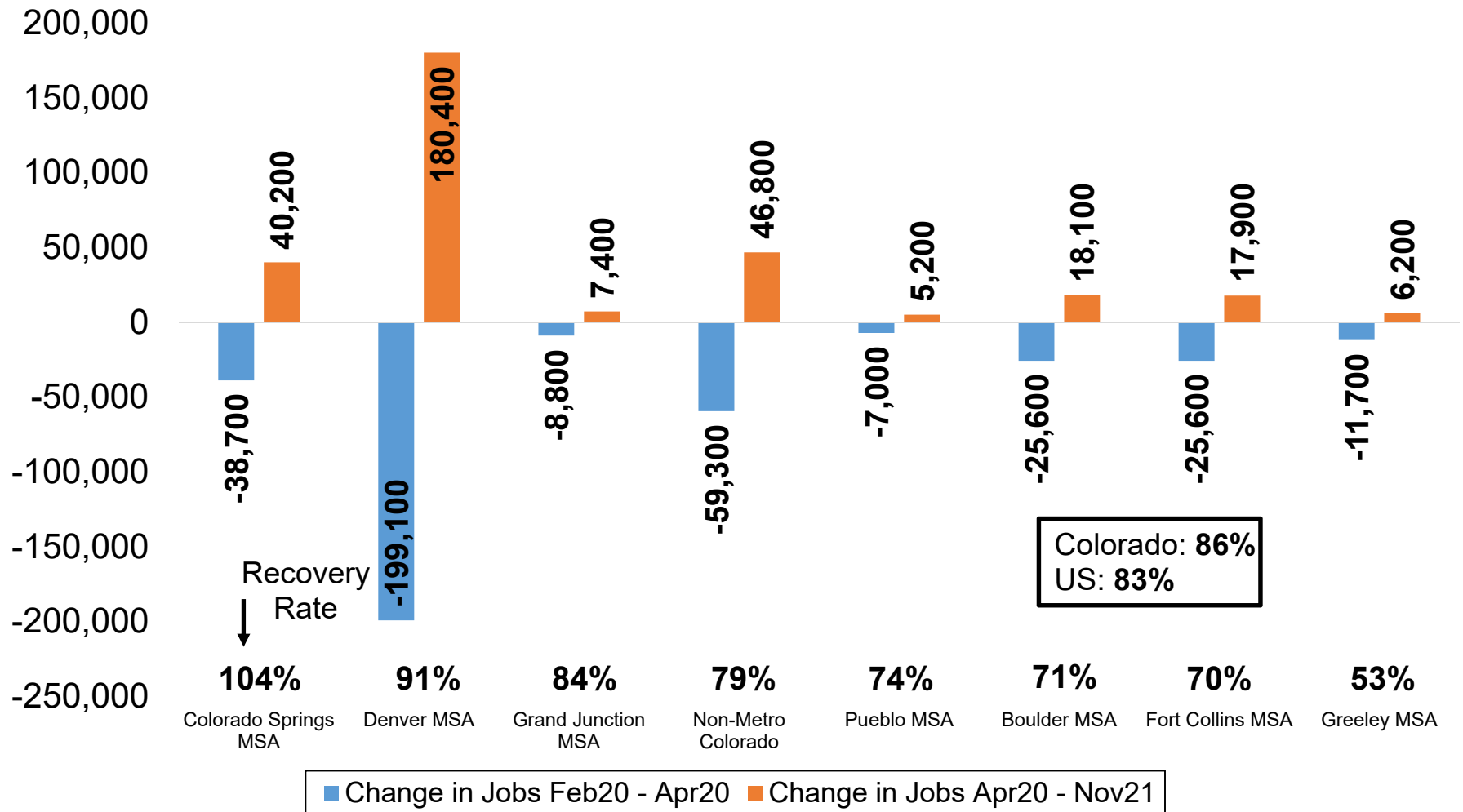
Source: Colorado Department of Labor and Employment; Bureau of Labor Statistics
Data seasonally adjusted

Colorado Industry Sectors with Relatively Low Recovery Rates or with Continued Losses in Payroll Jobs



Source: Colorado Department of Labor and Employment; Bureau of Labor Statistics
 Data seasonally adjusted

Total Nonfarm Job Recovery Rates by Colorado Substate Area

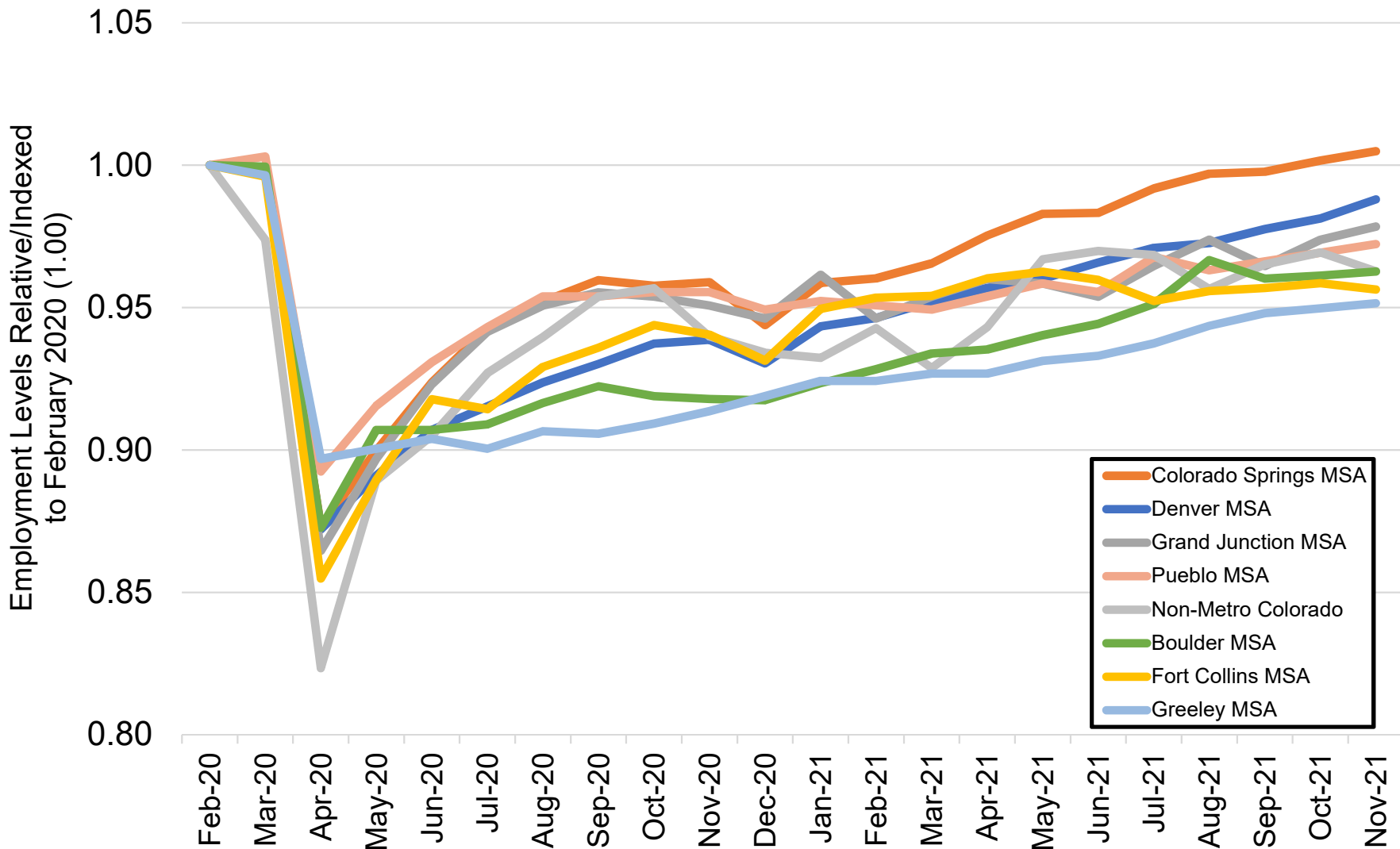


Source: Colorado Department of Labor and Employment; Bureau of Labor Statistics

Data seasonally adjusted

Note: MSA = Metropolitan Statistical Area; Non-Metro Colorado = residual of state that is not an MSA (47 total counties)

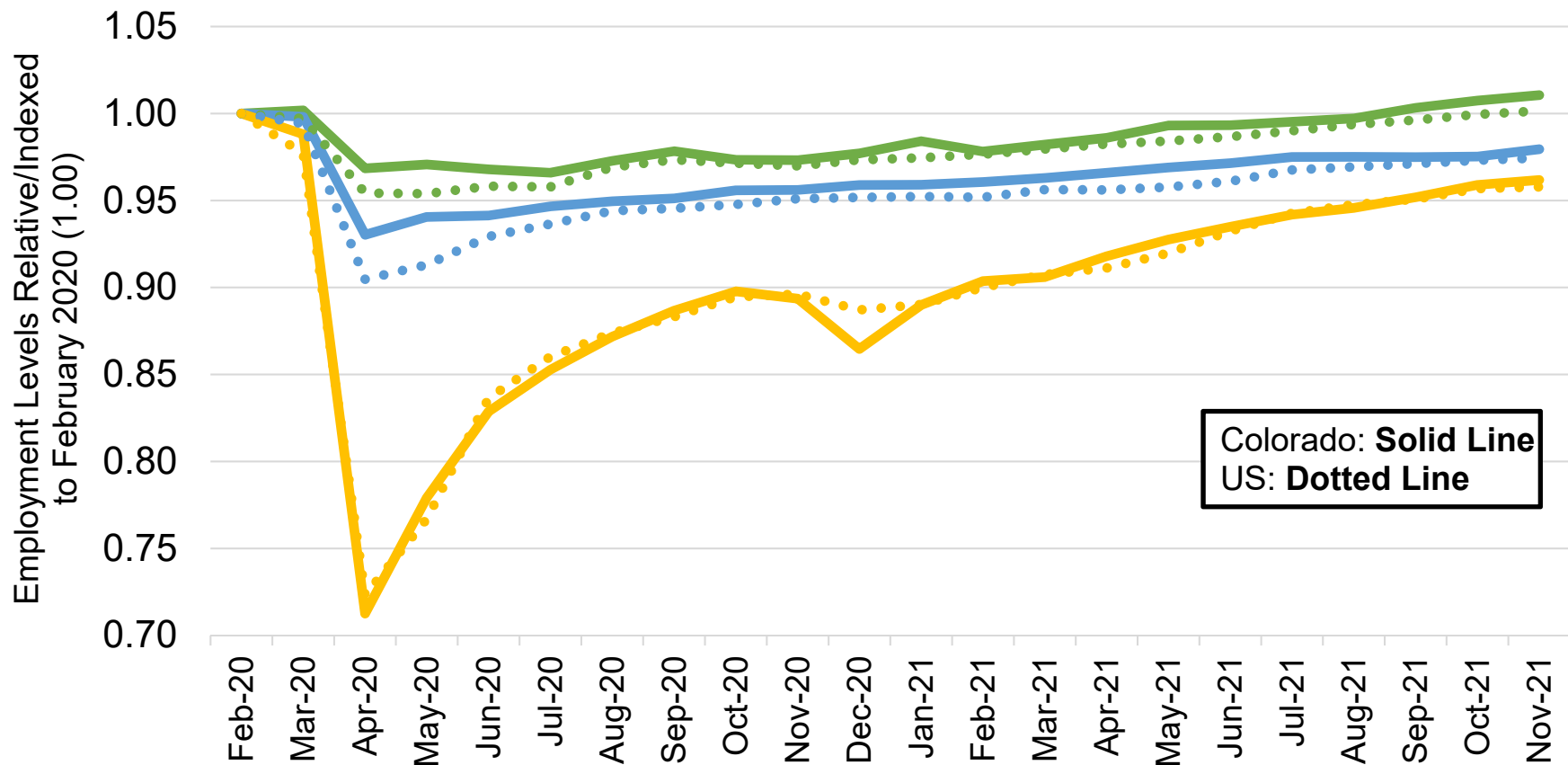
Colorado Job Loss & Recovery by Colorado Substate Area



Source: Colorado Department of Labor and Employment; Bureau of Labor Statistics

Data seasonally adjusted. Note: MSA = Metropolitan Statistical Area; Non-Metro Colorado = residual of state that is not an MSA (47 counties).

Job Loss and Recovery by Low, Medium, and High Wage Industries (Colorado & U.S.)

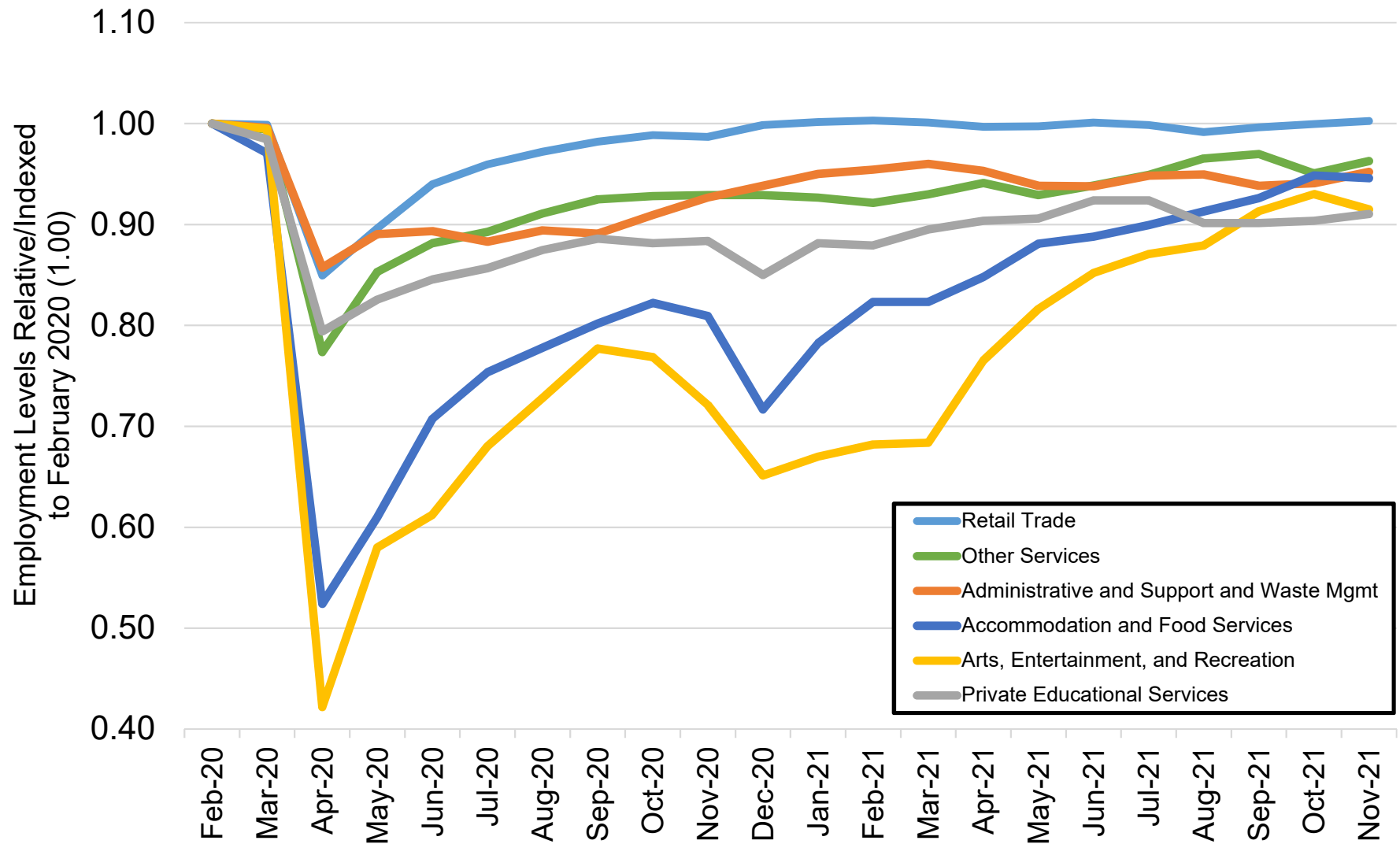


Source: Colorado Department of Labor and Employment; Bureau of Labor Statistics

Data seasonally adjusted. Note: low, medium, and high wage industries are determined by the 2019 state-level average weekly wage estimates from the Quarterly Census of Employment and Wages. **Low wage industries include:** retail trade; admin support/waste mgmt; private education services; arts, entertainment, and recreation; accommodation and food services; and other services. **Medium wage industries include:** construction; manufacturing; transportation, warehousing, and utilities; real estate, rental, and leasing; private health care and social assistance; state government; and local government.

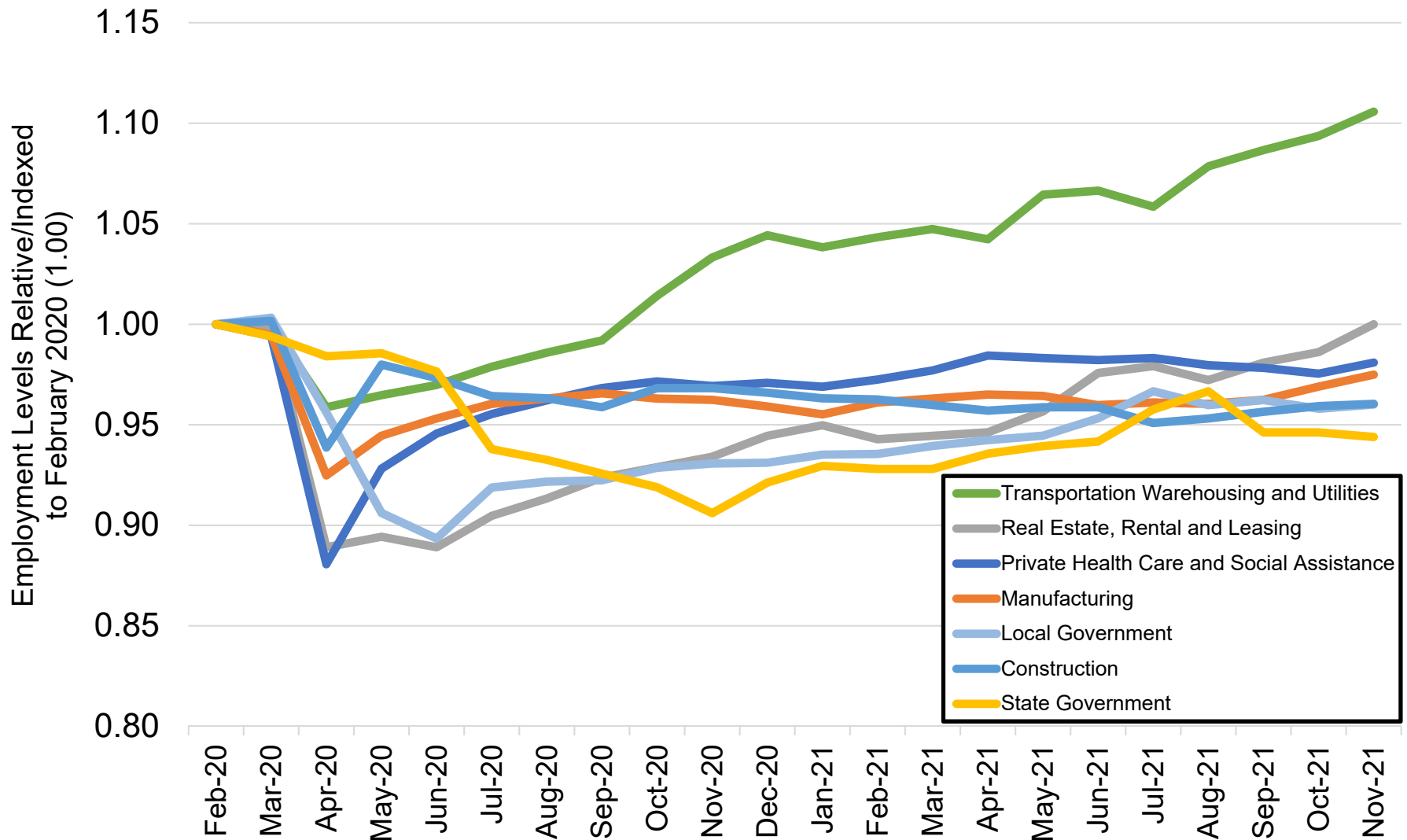
High wage industries include: mining and logging; wholesale trade; finance and insurance; professional and technical services; management of companies; and federal government.

Colorado Job Loss & Recovery by Low Wage Industries



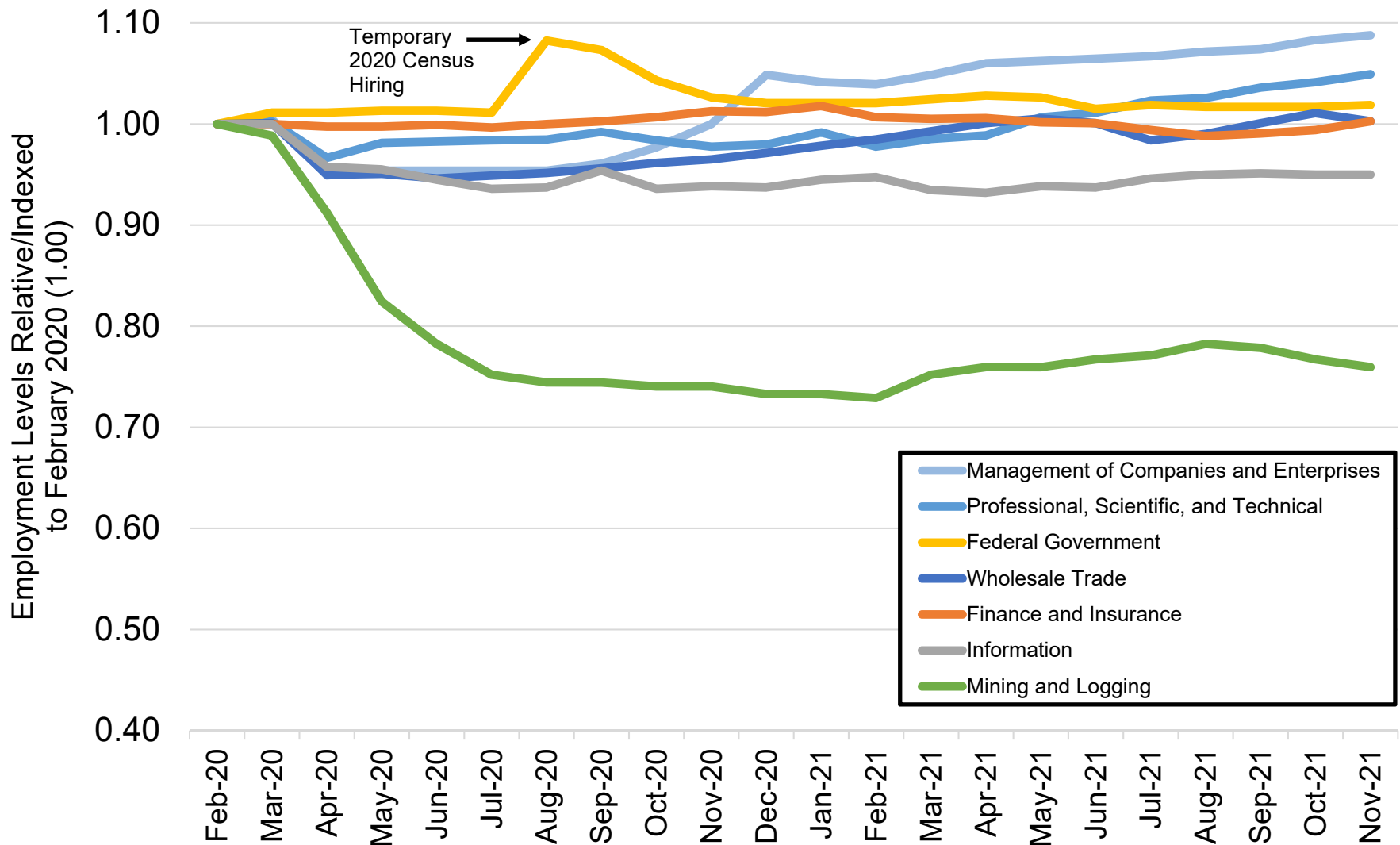
Source: Colorado Department of Labor and Employment; Bureau of Labor Statistics
 Data seasonally adjusted. Note: low wage industries are determined by the 2019 state-level average weekly wage estimates from the Quarterly Census of Employment and Wages.

Colorado Job Loss & Recovery by Medium Wage Industries



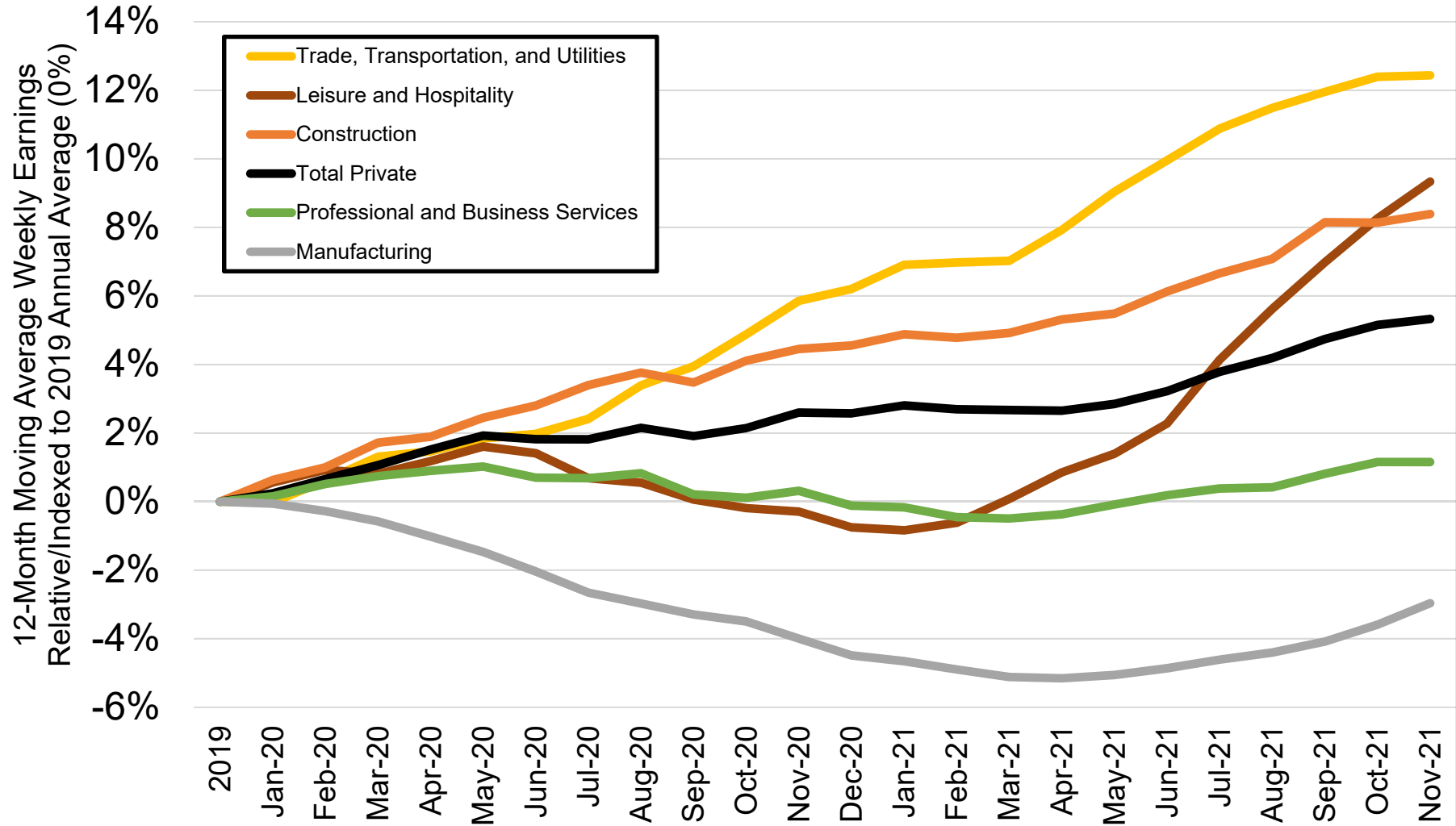
Source: Colorado Department of Labor and Employment; Bureau of Labor Statistics
 Data seasonally adjusted. Note: medium wage industries are determined by the 2019 state-level average weekly wage estimates from the Quarterly Census of Employment and Wages.

Colorado Job Loss & Recovery by High Wage Industries



Source: Colorado Department of Labor and Employment; Bureau of Labor Statistics
 Data seasonally adjusted. Note: high wage industries are determined by the 2019 state-level average weekly wage estimates from the Quarterly Census of Employment and Wages.

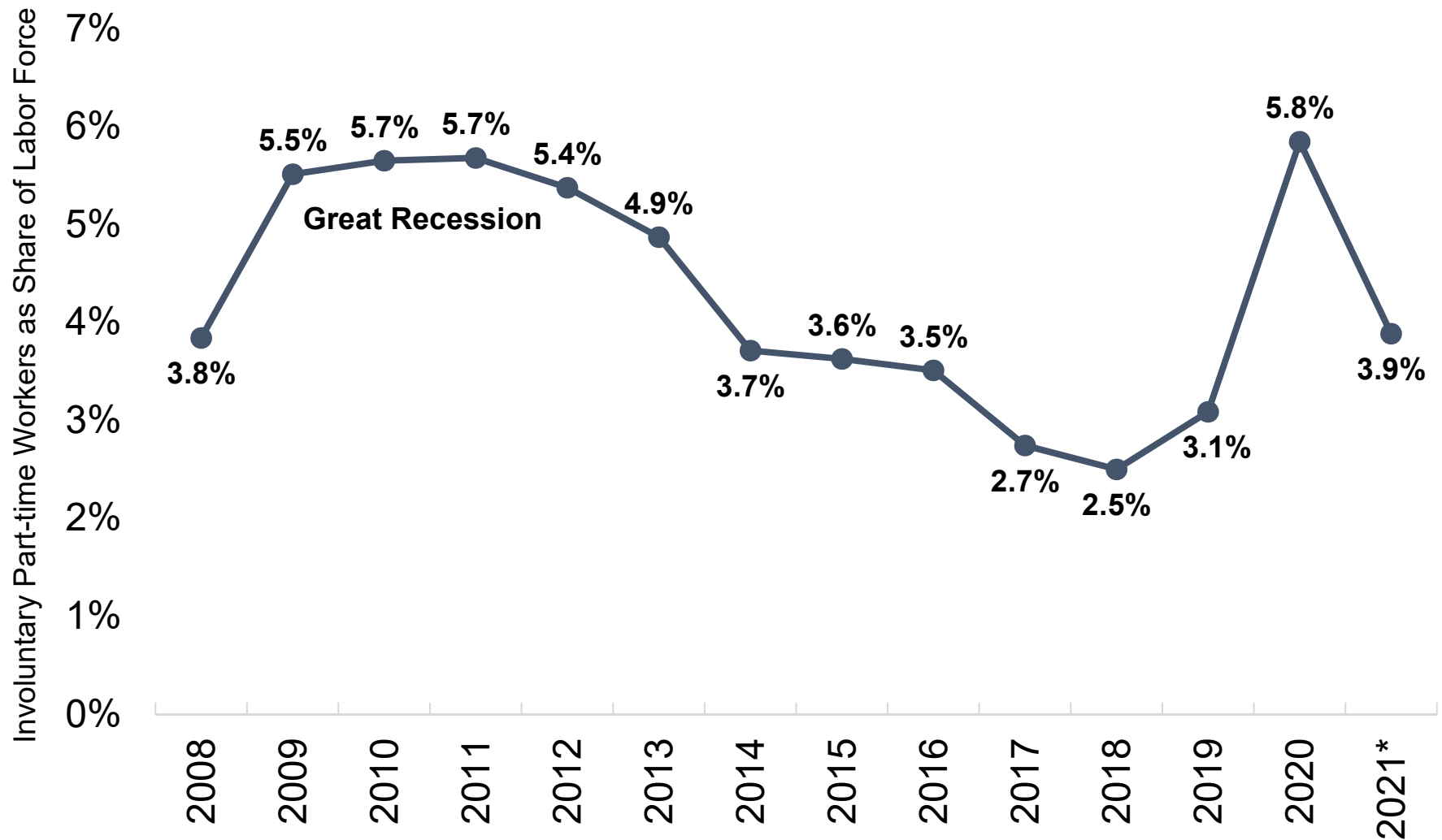
Percent Change in Average Weekly Earnings Since 2019, by Select Colorado Industry



Source: Colorado Department of Labor and Employment; Bureau of Labor Statistics

Data not seasonally adjusted. Note: each month on this chart represents a 12-month moving average and measures the percent change in average weekly earnings compared to the 2019 annual average for that industry.

Involuntary Part-Time Workers as Share of Labor Force



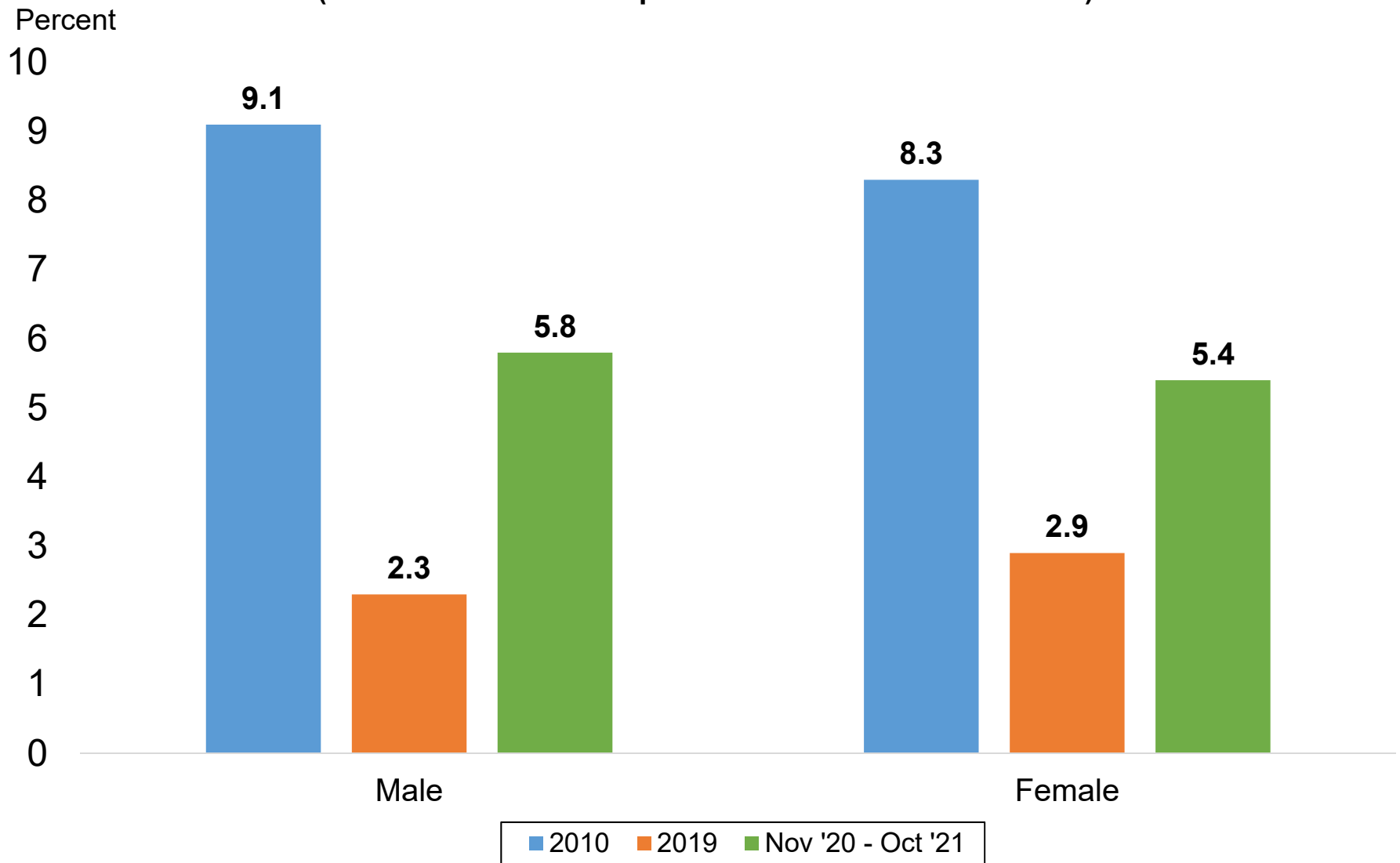
Source: Current Population Survey

Data not seasonally adjusted. Involuntary part-time workers are those individuals who are working part-time hours (34 hours or less), but prefer full-time hours (35+ hours).

*Average through the first eleven months of 2021.

Unemployment Rates by Gender

(Most recent 12-month period available vs. 2010 & 2019)

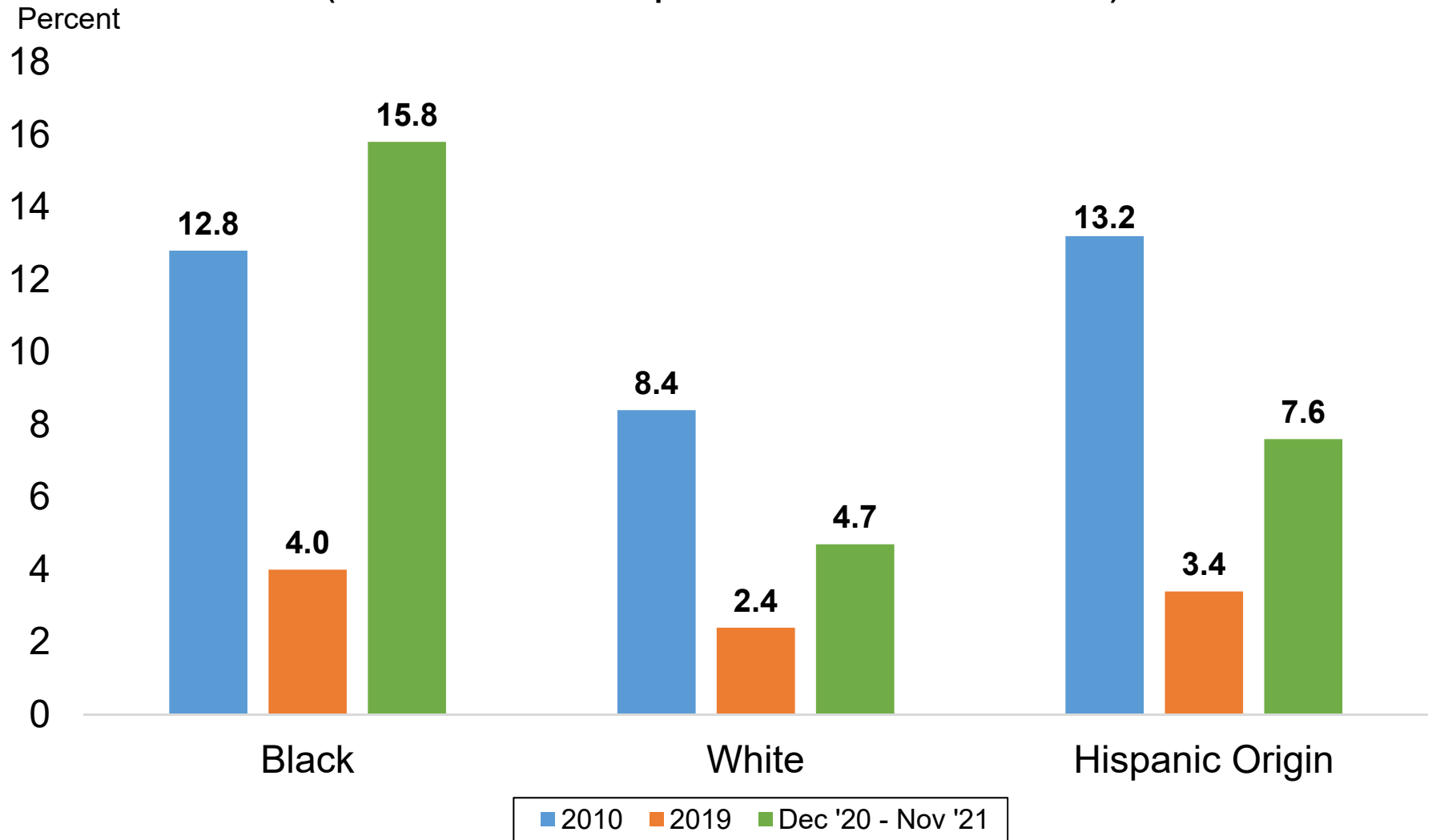


Source: Current Population Survey

Data not seasonally adjusted. Unemployment rates by gender for individuals 16 years and older.

Unemployment Rates by Race & Ethnicity

(Most recent 12-month period available vs. 2010 & 2019)

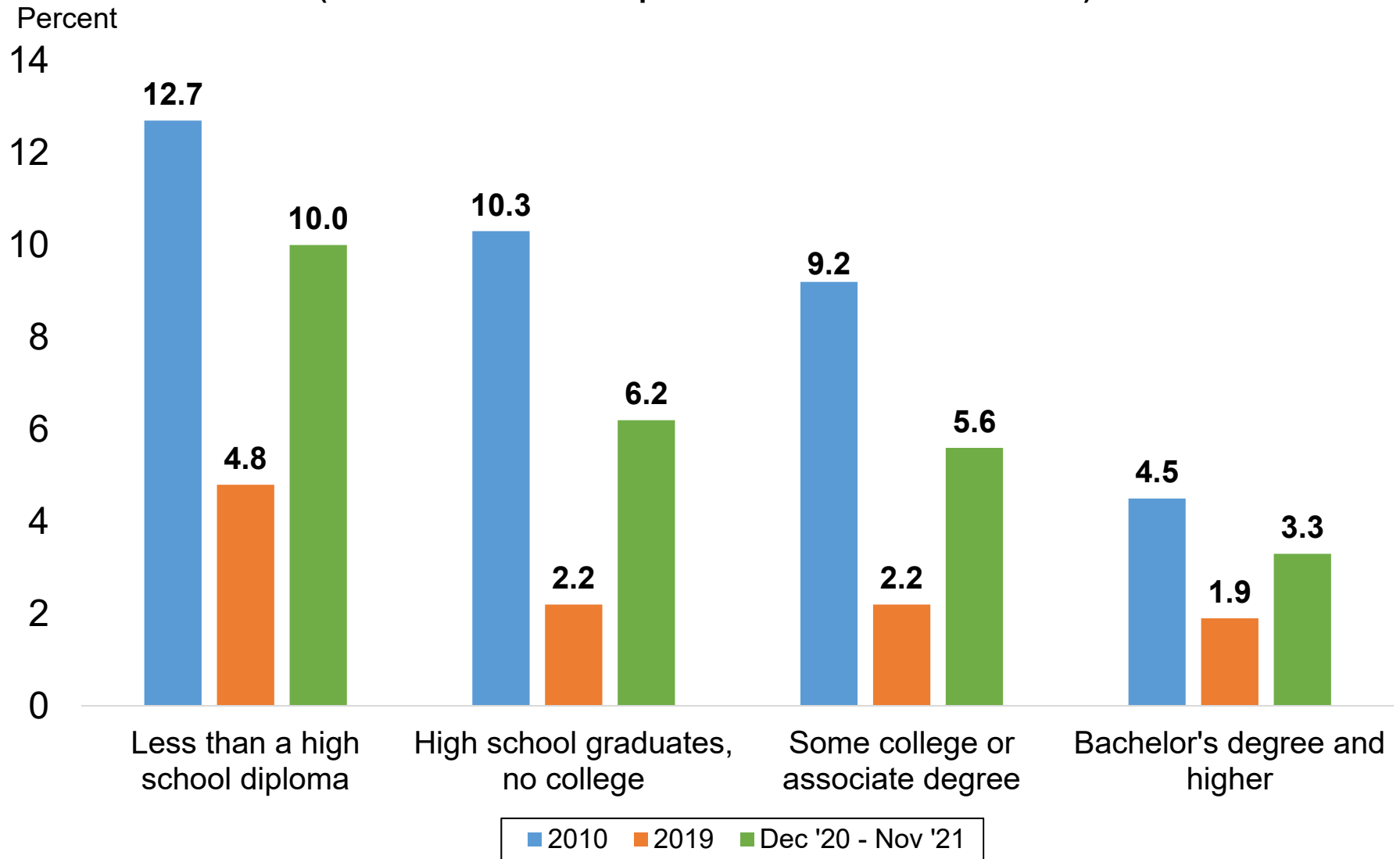


Source: Current Population Survey

Data not seasonally adjusted. Other race categories excluded due to small sample size. Hispanic origin category is not mutually exclusive (i.e. hispanic and non-hispanic ethnicities are represented in both race categories).

Unemployment Rates by Educational Attainment

(Most recent 12-month period available vs. 2010 & 2019)



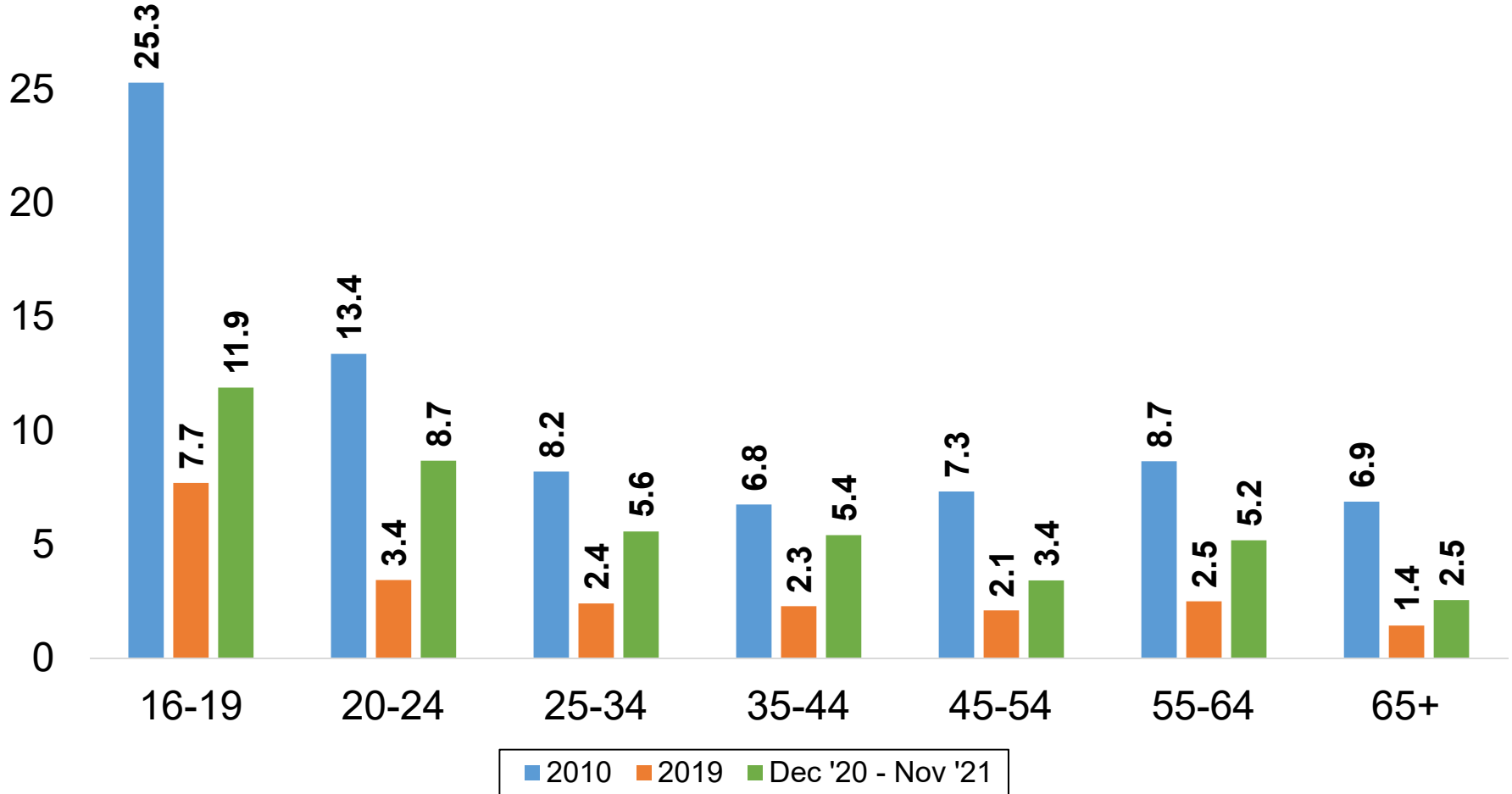
Source: Current Population Survey

Data not seasonally adjusted. Unemployment rates by educational attainment for individuals 25 years and over.

Unemployment Rates by Age Group

(Most recent 12-month period available vs. 2010 & 2019)

Percent



Source: Current Population Survey
Data not seasonally adjusted.

**LABOR FORCE SUMMARY
COLORADO**

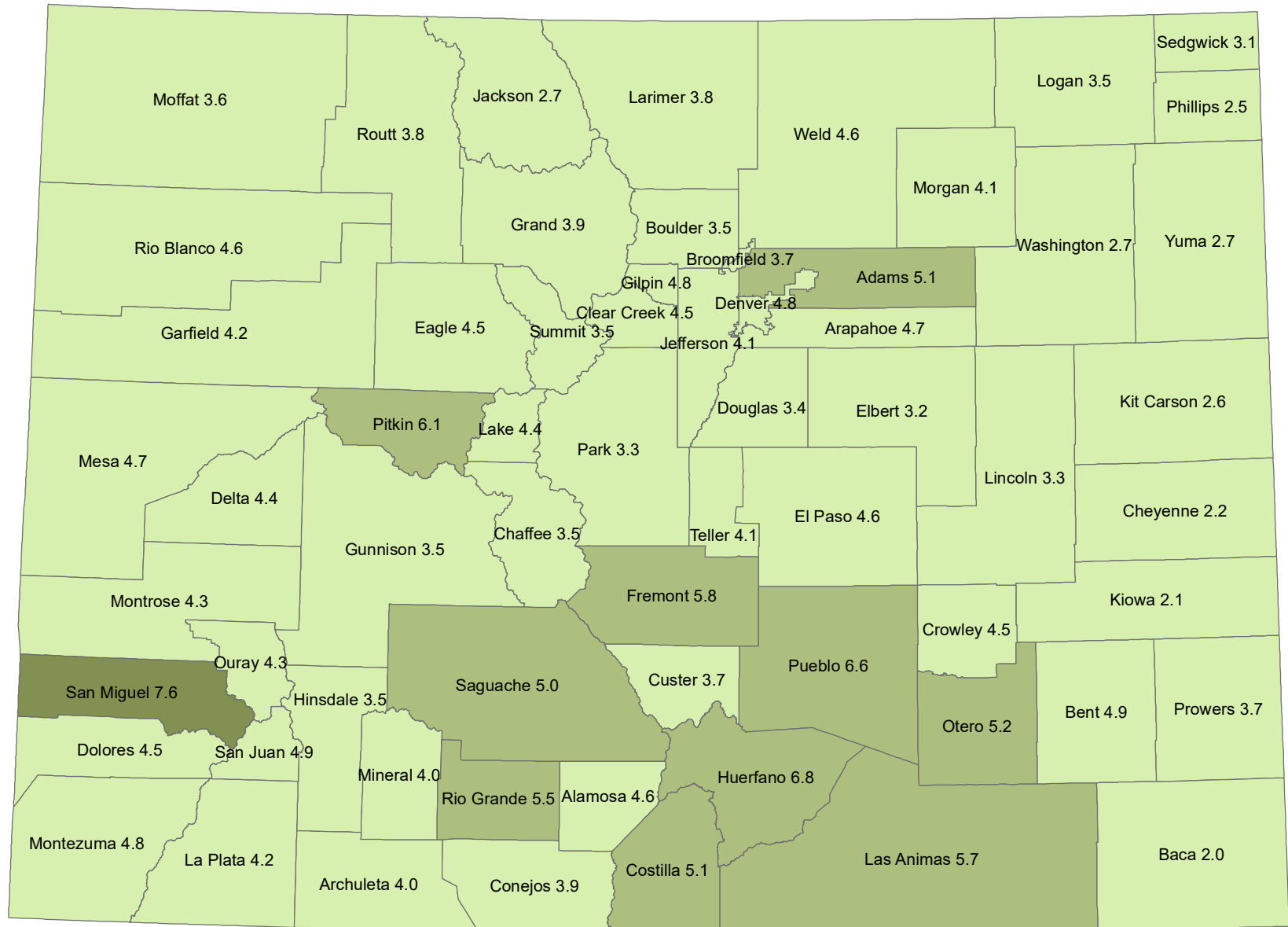
Preliminary Estimates for November 2021

LABOR FORCE DATA (VALUES IN THOUSANDS)					
SEASONALLY ADJUSTED:				Change from last:	
	Nov-21	Oct-21	Nov-20	Month	Year
Total Civilian Labor Force	3,199.9	3,196.7	3,166.5	3.1	33.4
Unemployment	163.8	171.3	218.6	-7.5	-54.8
Unemployment Rate (%)	5.1	5.4	6.9	-0.3	-1.8
Employment	3,036.1	3,025.4	2,947.9	10.7	88.1
UNADJUSTED FOR SEASONALITY:				Change from last:	
	Nov-21	Oct-21	Nov-20	Month	Year
Total Civilian Labor Force	3,217.5	3,224.3	3,173.5	-6.9	44.0
Unemployment	142.5	143.9	212.6	-1.4	-70.1
Unemployment Rate (%)	4.4	4.5	6.7	-0.1	-2.3
Employment	3,075.0	3,080.4	2,960.9	-5.5	114.1

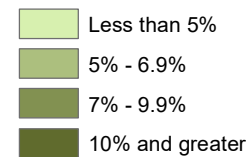
WAGE AND SALARY EMPLOYMENT DATA (VALUES IN THOUSANDS)					
SEASONALLY ADJUSTED:				Change from last:	
	Nov-21	Oct-21	Nov-20	Month	Year
Mining & Logging	19.9	20.1	19.4	-0.2	0.5
Construction	172.2	172.0	173.6	0.2	-1.4
Manufacturing	147.8	146.9	145.9	0.9	1.9
Trade, Transportation, & Utilities	494.1	493.0	478.4	1.1	15.7
Information	74.1	74.1	73.2	0.0	0.9
Financial Activities	176.4	174.6	173.8	1.8	2.6
Professional & Business Services	455.4	451.5	430.2	3.9	25.2
Educational & Health Services	344.0	342.0	339.2	2.0	4.8
Leisure & Hospitality	326.3	328.0	275.6	-1.7	50.7
Other Services	111.4	110.0	107.5	1.4	3.9
Government	443.8	443.4	431.1	0.4	12.7
TOTAL NONAG	2,765.4	2,755.6	2,647.9	9.8	117.5
Labor Disputants	0.0	0.0	0.0	0.0	0.0
UNADJUSTED FOR SEASONALITY:				Change from last:	
	Nov-21	Oct-21	Nov-20	Month	Year
Mining & Logging	20.1	20.5	19.7	-0.4	0.4
Construction	173.1	175.1	173.9	-2.0	-0.8
Manufacturing	148.1	147.3	146.0	0.8	2.1
Trade, Transportation, & Utilities	502.0	491.6	485.4	10.4	16.6
Information	73.9	74.4	72.9	-0.5	1.0
Financial Activities	176.2	175.1	172.6	1.1	3.6
Professional & Business Services	456.5	454.8	430.5	1.7	26.0
Educational & Health Services	343.9	343.8	339.3	0.1	4.6
Leisure & Hospitality	313.9	318.1	263.1	-4.2	50.8
Other Services	111.0	110.2	106.8	0.8	4.2
Government	451.8	450.3	440.1	1.5	11.7
TOTAL NONAG	2,770.5	2,761.2	2,650.3	9.3	120.2
Labor Disputants	0.0	0.0	0.0	0.0	0.0

Source: Colorado Department of Labor & Employment; Bureau of Labor Statistics

NOT SEASONALLY ADJUSTED Unemployment Rates November 2021



Source: Colorado Department of Labor and Employment
Labor Market Information



Not Seasonally Adjusted Labor Force

	November 2021				October 2021			
	Labor Force	Employment	Unemployment	Rate	Labor force	Employment	Unemployment	Rate
Colorado	3,217,459	3,074,976	142,483	4.4	3,224,313	3,080,439	143,874	4.5
Metropolitan Statistical Area								
Boulder	200,015	192,993	7,022	3.5	199,189	192,198	6,991	3.5
Colorado Springs	373,321	356,216	17,105	4.6	373,039	355,789	17,250	4.6
Denver-Aurora-Lakewood	1,733,332	1,655,592	77,740	4.5	1,725,461	1,646,193	79,268	4.6
Fort Collins	206,935	199,036	7,899	3.8	209,037	201,176	7,861	3.8
Grand Junction	77,535	73,896	3,639	4.7	77,368	73,769	3,599	4.7
Greeley	170,209	162,460	7,749	4.6	173,265	165,401	7,864	4.5
Pueblo	78,917	73,715	5,202	6.6	79,213	73,826	5,387	6.8
Counties								
Adams	284,911	270,251	14,660	5.1	284,358	269,363	14,995	5.3
Alamosa	8,532	8,143	389	4.6	8,948	8,561	387	4.3
Arapahoe	380,492	362,461	18,031	4.7	378,579	360,028	18,551	4.9
Archuleta	7,724	7,412	312	4.0	7,984	7,694	290	3.6
Baca	2,332	2,286	46	2.0	2,600	2,558	42	1.6
Bent	1,998	1,901	97	4.9	2,207	2,102	105	4.8
Boulder	200,015	192,993	7,022	3.5	199,189	192,198	6,991	3.5
Broomfield	41,747	40,213	1,534	3.7	41,510	39,976	1,534	3.7
Chaffee	10,451	10,090	361	3.5	10,463	10,126	337	3.2
Cheyenne	1,128	1,103	25	2.2	1,263	1,241	22	1.7
Clear Creek	6,322	6,039	283	4.5	6,299	6,007	292	4.6
Conejos	4,114	3,955	159	3.9	4,418	4,260	158	3.6
Costilla	1,785	1,694	91	5.1	1,894	1,805	89	4.7
Crowley	1,597	1,525	72	4.5	1,650	1,577	73	4.4
Custer	2,220	2,137	83	3.7	2,237	2,160	77	3.4
Delta	14,605	13,962	643	4.4	15,444	14,830	614	4.0
Denver	438,274	417,061	21,213	4.8	436,184	414,348	21,836	5.0
Dolores	1,174	1,121	53	4.5	1,247	1,205	42	3.4
Douglas	203,441	196,593	6,848	3.4	202,241	195,400	6,841	3.4
Eagle	31,971	30,530	1,441	4.5	32,496	31,085	1,411	4.3
El Paso	359,776	343,230	16,546	4.6	359,579	342,869	16,710	4.6
Elbert	15,726	15,217	509	3.2	15,946	15,448	498	3.1
Fremont	16,625	15,655	970	5.8	16,738	15,798	940	5.6
Garfield	30,458	29,172	1,286	4.2	31,238	29,966	1,272	4.1
Gilpin	4,016	3,825	191	4.8	3,991	3,802	189	4.7
Grand	8,640	8,307	333	3.9	8,326	7,995	331	4.0
Gunnison	10,929	10,551	378	3.5	11,392	11,040	352	3.1
Hinsdale	369	356	13	3.5	406	392	14	3.4
Huerfano	2,838	2,646	192	6.8	2,954	2,769	185	6.3
Jackson	926	901	25	2.7	1,063	1,041	22	2.1
Jefferson	346,732	332,649	14,083	4.1	344,713	330,563	14,150	4.1
Kiowa	1,036	1,014	22	2.1	1,150	1,129	21	1.8
Kit Carson	4,403	4,287	116	2.6	4,806	4,686	120	2.5
La Plata	31,673	30,357	1,316	4.2	32,283	30,989	1,294	4.0
Lake	4,544	4,345	199	4.4	4,510	4,316	194	4.3
Larimer	206,935	199,036	7,899	3.8	209,037	201,176	7,861	3.8
Las Animas	6,787	6,397	390	5.7	7,006	6,614	392	5.6
Lincoln	2,480	2,397	83	3.3	2,666	2,583	83	3.1
Logan	11,500	11,098	402	3.5	11,978	11,579	399	3.3
Mesa	77,535	73,896	3,639	4.7	77,368	73,769	3,599	4.7
Mineral	404	388	16	4.0	403	389	14	3.5
Moffat	7,696	7,422	274	3.6	7,769	7,496	273	3.5
Montezuma	12,866	12,250	616	4.8	13,443	12,865	578	4.3
Montrose	21,888	20,955	933	4.3	22,664	21,763	901	4.0
Morgan	16,410	15,732	678	4.1	17,386	16,694	692	4.0
Otero	8,572	8,124	448	5.2	8,996	8,547	449	5.0
Ouray	2,541	2,433	108	4.3	2,727	2,629	98	3.6
Park	11,671	11,283	388	3.3	11,640	11,258	382	3.3
Phillips	2,371	2,311	60	2.5	2,737	2,679	58	2.1
Pitkin	10,646	9,996	650	6.1	10,805	10,191	614	5.7
Prowers	6,322	6,089	233	3.7	6,784	6,545	239	3.5
Pueblo	78,917	73,715	5,202	6.6	79,213	73,826	5,387	6.8
Rio Blanco	3,075	2,935	140	4.6	3,233	3,100	133	4.1
Rio Grande	5,669	5,357	312	5.5	6,172	5,890	282	4.6
Routt	16,005	15,398	607	3.8	15,759	15,167	592	3.8
Saguache	3,377	3,208	169	5.0	3,681	3,515	166	4.5
San Juan	387	368	19	4.9	494	478	16	3.2
San Miguel	4,142	3,828	314	7.6	4,360	4,124	236	5.4
Sedgwick	1,178	1,142	36	3.1	1,287	1,251	36	2.8
Summit	22,132	21,350	782	3.5	19,952	19,160	792	4.0
Teller	13,545	12,986	559	4.1	13,460	12,920	540	4.0
Washington	3,107	3,024	83	2.7	3,399	3,320	79	2.3
Weld	170,209	162,460	7,749	4.6	173,265	165,401	7,864	4.5
Yuma	5,564	5,415	149	2.7	6,327	6,185	142	2.2

All estimates made in cooperation with the U.S. Department of Labor, Bureau of Labor Statistics and adjusted to Current Population Survey data. Estimates have been revised to incorporate population data from the American Community Survey.
 Colorado Department of Labor and Employment 2021

Not Seasonally Adjusted Labor Force

	November 2021				November 2020			
	Labor Force	Employment	Unemployment	Rate	Labor force	Employment	Unemployment	Rate
Colorado	3,217,459	3,074,976	142,483	4.4	3,173,505	2,960,915	212,590	6.7
Metropolitan Statistical Area								
Boulder	200,015	192,993	7,022	3.5	194,912	184,259	10,653	5.5
Colorado Springs	373,321	356,216	17,105	4.6	365,409	341,737	23,672	6.5
Denver-Aurora-Lakewood	1,733,332	1,655,592	77,740	4.5	1,700,431	1,581,589	118,842	7.0
Fort Collins	206,935	199,036	7,899	3.8	208,848	197,298	11,550	5.5
Grand Junction	77,535	73,896	3,639	4.7	77,424	72,228	5,196	6.7
Greeley	170,209	162,460	7,749	4.6	170,062	158,078	11,984	7.0
Pueblo	78,917	73,715	5,202	6.6	80,292	73,173	7,119	8.9
Counties								
Adams	284,911	270,251	14,660	5.1	280,272	258,676	21,596	7.7
Alamosa	8,532	8,143	389	4.6	8,486	7,957	529	6.2
Arapahoe	380,492	362,461	18,031	4.7	373,862	346,059	27,803	7.4
Archuleta	7,724	7,412	312	4.0	7,265	6,829	436	6.0
Baca	2,332	2,286	46	2.0	2,209	2,158	51	2.3
Bent	1,998	1,901	97	4.9	1,912	1,817	95	5.0
Boulder	200,015	192,993	7,022	3.5	194,912	184,259	10,653	5.5
Broomfield	41,747	40,213	1,534	3.7	40,846	38,474	2,372	5.8
Chaffee	10,451	10,090	361	3.5	9,860	9,350	510	5.2
Cheyenne	1,128	1,103	25	2.2	1,132	1,100	32	2.8
Clear Creek	6,322	6,039	283	4.5	6,216	5,763	453	7.3
Conejos	4,114	3,955	159	3.9	4,136	3,904	232	5.6
Costilla	1,785	1,694	91	5.1	1,837	1,701	136	7.4
Crowley	1,597	1,525	72	4.5	1,566	1,470	96	6.1
Custer	2,220	2,137	83	3.7	2,106	2,007	99	4.7
Delta	14,605	13,962	643	4.4	14,388	13,509	879	6.1
Denver	438,274	417,061	21,213	4.8	431,983	398,285	33,698	7.8
Dolores	1,174	1,121	53	4.5	1,168	1,101	67	5.7
Douglas	203,441	196,593	6,848	3.4	197,734	187,848	9,886	5.0
Eagle	31,971	30,530	1,441	4.5	33,595	30,953	2,642	7.9
El Paso	359,776	343,230	16,546	4.6	352,258	329,353	22,905	6.5
Elbert	15,726	15,217	509	3.2	15,267	14,633	634	4.2
Fremont	16,625	15,655	970	5.8	15,596	14,391	1,205	7.7
Garfield	30,458	29,172	1,286	4.2	30,399	28,570	1,829	6.0
Gilpin	4,016	3,825	191	4.8	3,918	3,646	272	6.9
Grand	8,640	8,307	333	3.9	9,029	8,437	592	6.6
Gunnison	10,929	10,551	378	3.5	10,799	10,221	578	5.4
Hinsdale	369	356	13	3.5	362	347	15	4.1
Huerfano	2,838	2,646	192	6.8	2,702	2,456	246	9.1
Jackson	926	901	25	2.7	951	912	39	4.1
Jefferson	346,732	332,649	14,083	4.1	339,074	317,484	21,590	6.4
Kiowa	1,036	1,014	22	2.1	998	974	24	2.4
Kit Carson	4,403	4,287	116	2.6	4,338	4,214	124	2.9
La Plata	31,673	30,357	1,316	4.2	31,560	29,589	1,971	6.2
Lake	4,544	4,345	199	4.4	4,686	4,355	331	7.1
Larimer	206,935	199,036	7,899	3.8	208,848	197,298	11,550	5.5
Las Animas	6,787	6,397	390	5.7	6,657	6,133	524	7.9
Lincoln	2,480	2,397	83	3.3	2,428	2,312	116	4.8
Logan	11,500	11,098	402	3.5	11,265	10,721	544	4.8
Mesa	77,535	73,896	3,639	4.7	77,424	72,228	5,196	6.7
Mineral	404	388	16	4.0	412	388	24	5.8
Moffat	7,696	7,422	274	3.6	7,394	7,041	353	4.8
Montezuma	12,866	12,250	616	4.8	12,605	11,822	783	6.2
Montrose	21,888	20,955	933	4.3	21,648	20,379	1,269	5.9
Morgan	16,410	15,732	678	4.1	16,457	15,537	920	5.6
Otero	8,572	8,124	448	5.2	8,422	7,869	553	6.6
Ouray	2,541	2,433	108	4.3	2,429	2,263	166	6.8
Park	11,671	11,283	388	3.3	11,259	10,721	538	4.8
Phillips	2,371	2,311	60	2.5	2,476	2,411	65	2.6
Pitkin	10,646	9,996	650	6.1	10,874	9,719	1,155	10.6
Prowers	6,322	6,089	233	3.7	6,351	6,043	308	4.8
Pueblo	78,917	73,715	5,202	6.6	80,292	73,173	7,119	8.9
Rio Blanco	3,075	2,935	140	4.6	2,991	2,838	153	5.1
Rio Grande	5,669	5,357	312	5.5	5,596	5,207	389	7.0
Routt	16,005	15,398	607	3.8	15,972	15,033	939	5.9
Saguache	3,377	3,208	169	5.0	3,527	3,265	262	7.4
San Juan	387	368	19	4.9	397	376	21	5.3
San Miguel	4,142	3,828	314	7.6	4,631	4,101	530	11.4
Sedgwick	1,178	1,142	36	3.1	1,186	1,146	40	3.4
Summit	22,132	21,350	782	3.5	22,663	21,215	1,448	6.4
Teller	13,545	12,986	559	4.1	13,151	12,384	767	5.8
Washington	3,107	3,024	83	2.7	2,992	2,900	92	3.1
Weld	170,209	162,460	7,749	4.6	170,062	158,078	11,984	7.0
Yuma	5,564	5,415	149	2.7	5,674	5,514	160	2.8

All estimates made in cooperation with the U.S. Department of Labor, Bureau of Labor Statistics and adjusted to Current Population Survey data. Estimates have been revised to incorporate population data from the American Community Survey.
 Colorado Department of Labor and Employment 2021



Colorado LMI Data Overview

November 2021

Employment

	Nov-21	Oct-21	Nov-20	Change from previous:	
				Period	Year
Nonfarm Wage and Salary Employment (SA)	2,765,400	2,755,600	2,647,900	9,800	117,500
Total Resident Employment (SA)	3,036,100	3,025,400	2,947,900	10,700	88,200
	Q2 2021	Q1 2021	Q2 2020		
UI Covered Total Employment	2,686,561	2,615,044	2,465,917	71,517	220,644
UI Covered Private Employment	2,262,701	2,200,827	2,047,290	61,874	215,411

Unemployment

	Nov-21	Oct-21	Nov-20	Change from previous:	
				Period	Year
Unemployment (SA)	163,800	171,300	218,600	(7,500)	(54,800)
Percent Unemployed (SA)	5.1%	5.4%	6.9%	(0.3)	(1.8)
	Nov-21	Oct-21	Nov-20		
Initial Claims	13,950	16,667	54,909	(2,717)	(40,959)
Continued Weeks Claimed	121,494	134,068	410,528	(12,574)	(289,034)

Wages and Earnings

	Q2 2021	Q1 2021	Q2 2020	Change from previous:	
				Period	Year
Total Average Weekly Wage	\$1,283	\$1,337	\$1,227	(\$54)	\$56
Private Average Weekly Wage	\$1,298	\$1,365	\$1,238	(\$67)	\$60
	Nov-21	Oct-21	Nov-20		
Average Weekly Earnings (Construction)	\$1,230.77	\$1,185.24	\$1,212.16	\$45.53	\$18.61
Average Weekly Earnings (Manufacturing)	\$1,062.60	\$1,067.94	\$1,063.31	(\$5.34)	(\$0.71)

CO Unemployment Insurance Trust Fund

	Oct-21	Sep-21	Oct-20	Change from previous:	
				Period	Year
Employer Contributions	\$28,738,091	\$5,191,822	\$26,691,577	\$23,546,269	\$2,046,514
Benefits Paid	\$44,104,608	\$54,325,771	\$164,893,459	(\$10,221,163)	(\$120,788,851)
Average Weekly Benefit Amount	\$403.28	\$395.32	\$368.69	\$7.96	\$34.59
Duration (weeks)	27.85	18.53	35.33	9.32	(7.48)
Outstanding Title XII Loan Balance	\$1,014,167,919	\$1,014,167,919	\$500,208,986	\$0	513,958,932

Consumer Price Index for All Urban Consumers

Not seasonally adjusted	Nov-21	Sep-21	Nov-20	% Change from previous:	
				Period	Year
Denver-Aurora-Lakewood	289.621	286.186	271.837	1.2%	6.5%
US City Average	277.948	274.310	260.229	1.3%	6.8%

(Most current data available for all categories)