

PRESS RELEASE

Colorado Department of Labor and Employment • 633 17th Street, Suite 1200 • Denver, CO 80202 • (303) 318-8004 • Fax: (303) 318-8070

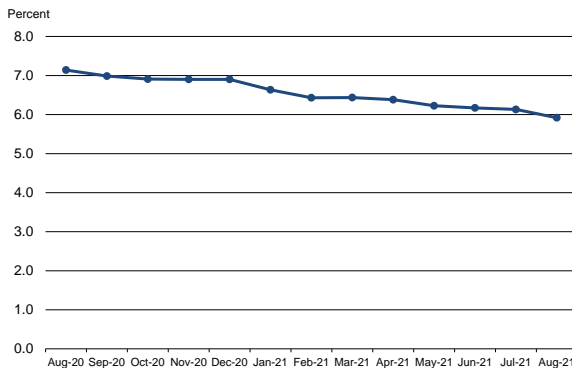
For Immediate Release

Date: September 17, 2021/ 8:00 A.M.
Contact: Office of Government and Public Relations
Email: cdle_pr@state.co.us
Web: <http://www.colmigateway.com>

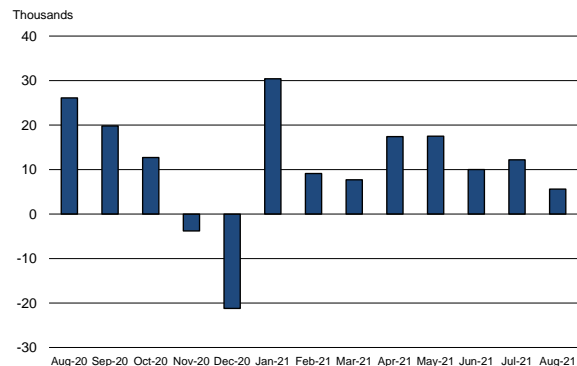
Colorado Employment Situation – August 2021

5,600 Nonfarm Payroll Jobs Added in August; Unemployment Rate Declines to 5.9%

Colorado unemployment rate, seasonally adjusted
August 2020 - August 2021



Colorado nonfarm payroll employment over-the-month
change, seasonally adjusted, August 2020 - August 2021



Household survey data

According to the survey of households, Colorado's seasonally adjusted **unemployment rate** fell two-tenths of a percentage point in August to 5.9 percent. This marks the first time since March 2020 that the state's unemployment rate has been below six percent. The national unemployment rate also declined by two-tenths of a percentage point to 5.2 percent.

Other highlights from the household survey:

- Colorado's **labor force** decreased by 2,300 in August to 3,193,200. The share of Coloradans participating in the labor force was 68.3 percent last month. The state continues to experience a faster rate of recovery in the participation rate than the U.S.
- The **number of individuals employed** in Colorado grew by 4,700 in August to 3,004,200, which represents 64.2 percent of the state's 16+ population. Colorado has one of the highest employment-to-population ratios in the nation, ranking 7th in July.
- The **Colorado counties** with the highest unemployment rates in August were: Pueblo (7.9%), Huerfano (7.8%), Las Animas (6.8%), Fremont (6.5%), and Adams (6.2%). County-level unemployment rates are not seasonally adjusted and are directly comparable to Colorado's August unadjusted rate of 5.4 percent.

Establishment survey data

Employers in Colorado added 5,600 **nonfarm payroll jobs** from July to August for a total of 2,736,600 jobs, according to the survey of business establishments. Private sector payroll jobs increased 5,000 and government added 600 jobs. Over the past 16 months, Colorado has gained back 293,400 of the 375,800 nonfarm payroll jobs lost between February and April of last year. That translates to a **job recovery rate** of 78.1 percent, which exceeds the U.S. rate of 76.2 percent.

Other highlights from the establishment survey:

- **July estimates** were revised down to 2,731,000, and the over the month change from June to July was a gain of 12,200 rather than the originally estimated increase of 14,800 (monthly revisions are based on additional responses from businesses and government agencies since the last published estimates).
- **Private industry sectors with significant job gains** in August were: leisure and hospitality (~3,700), other services (~1,900), professional and business services (~1,500), and trade, transportation, and utilities (~1,100). Significant over the month private sector **job loss** occurred in education and health services (~1,600) and financial activities (~1,200).
- **Since August 2020**, nonfarm payroll jobs have increased 117,400, with the private sector growing by 104,500 jobs and government adding an additional 12,900 jobs. The largest **private sector job gains** were in leisure and hospitality (~47,100), professional and business services (~24,500), and trade, transportation, and utilities (~19,100). During that same period construction (~2,200) and manufacturing (~600) **payroll jobs declined**. Colorado's **rate of job growth** over the past year is 4.5 percent, compared to the U.S. rate of 4.3 percent.
- Over the year, the **average workweek** for all Colorado employees on private nonfarm payrolls was unchanged at 34.3 hours, while **average hourly earnings** increased from \$30.69 to \$32.19, a dollar and forty-six cents more than the national average hourly earnings of \$30.73.

###

All Colorado estimates from the establishment and household surveys, including greater geographic detail, are available at: <http://www.colmigateway.com>. Estimates for all states and the nation are available at: <http://www.bls.gov>.

The **September 2021 Colorado Employment Situation** will be released at 8:00 AM on Friday, October 22, 2021. The full schedule of release dates for calendar year 2021 estimates is available at <http://www.colmigateway.com>.

###

Technical Notes

This release provides information on industry employment and labor force statistics for August 2021, the most current estimates available from the Colorado Department of Labor and Employment. The reference period for the establishment and household surveys was the pay period or week that includes the 12th of the month. Therefore, this release provides an estimate of Colorado's employment situation as vaccination rates among the adult population continued to increase and pandemic-related restrictions were relaxed for businesses across the state. Additionally, the August reference week overlaps a period in which COVID-19 case rates for Colorado and the nation increased due to the Delta variant. For information on Colorado unemployment insurance claims activity and related statistics, visit www.colmigateway.com. For information regarding impacts to Bureau of Labor Statistics data collection and processing during the pandemic, go to www.bls.gov/bls/bls-covid-19-questions-and-answers.htm.

The unemployment rate, labor force, labor force participation, total employment and the number of unemployed are based on a survey of households. The total employment estimate derived from this survey is intended to measure the number of people employed.

Nonfarm payroll jobs estimates are based on a survey of business establishments and government agencies, and are intended to measure the number of jobs, not the number of people employed. Other series based on this survey include private sector average weekly hours, average hourly earnings and average weekly earnings.

The business establishment survey covers about seven times the number of households surveyed and is therefore considered a more reliable indicator of economic conditions. Because the estimates are based on two separate surveys, one measuring jobs by worksite and the other measuring persons employed and unemployed by household, estimates based on these surveys may provide seemingly conflicting results.

###

Supplemental information available in following pages

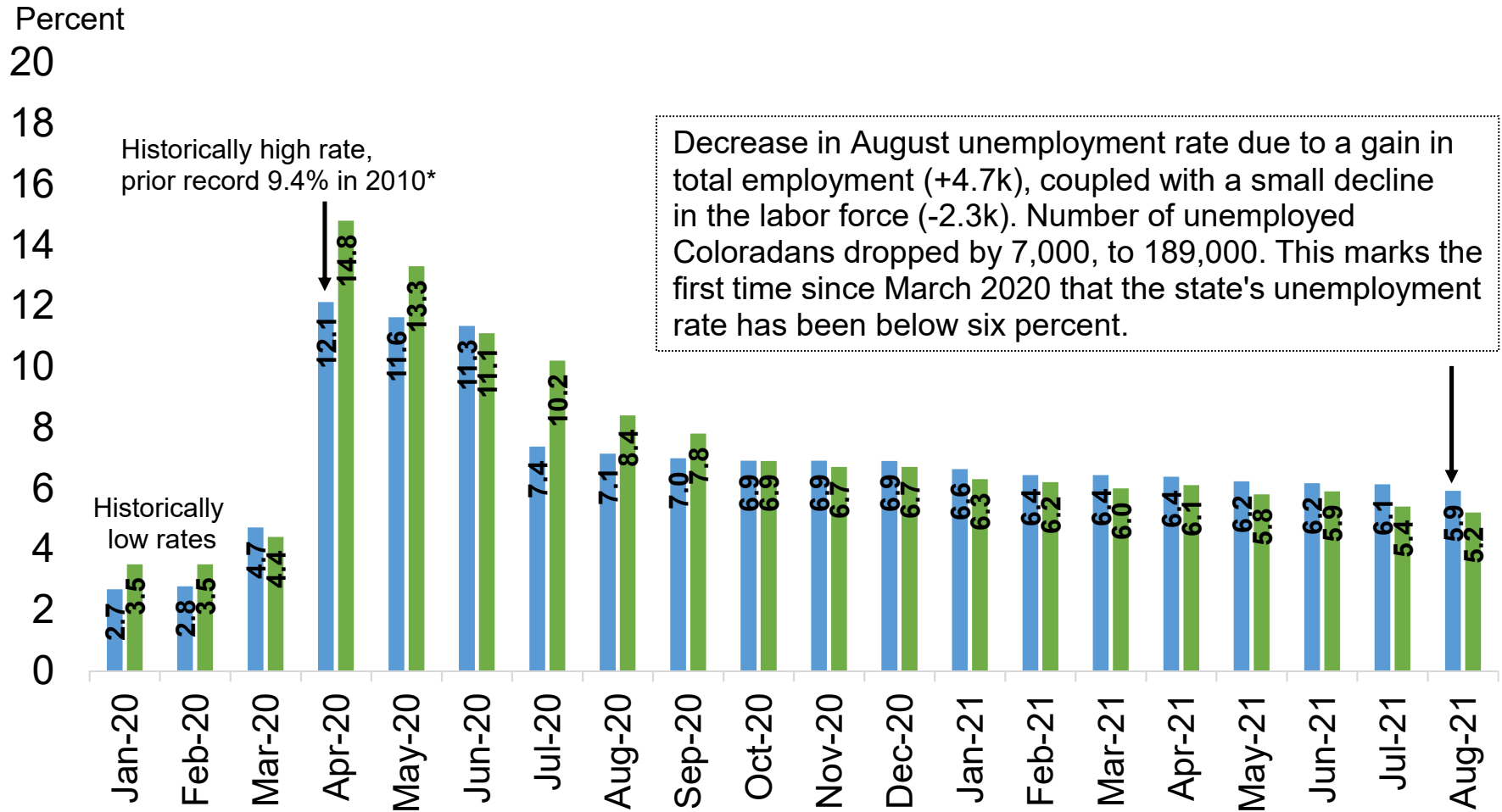
AUGUST 2021

EMPLOYMENT SITUATION SUPPLEMENTAL CHARTS

SEPTEMBER 17, 2021

This provides information on industry employment and labor force statistics, derived from surveys of business establishments and households. The reference period for these surveys is the pay period or week that includes the 12th of the month. The reference week for August was specifically August 8th – August 14th.

U.S. and Colorado Unemployment Rates Declined Further in August



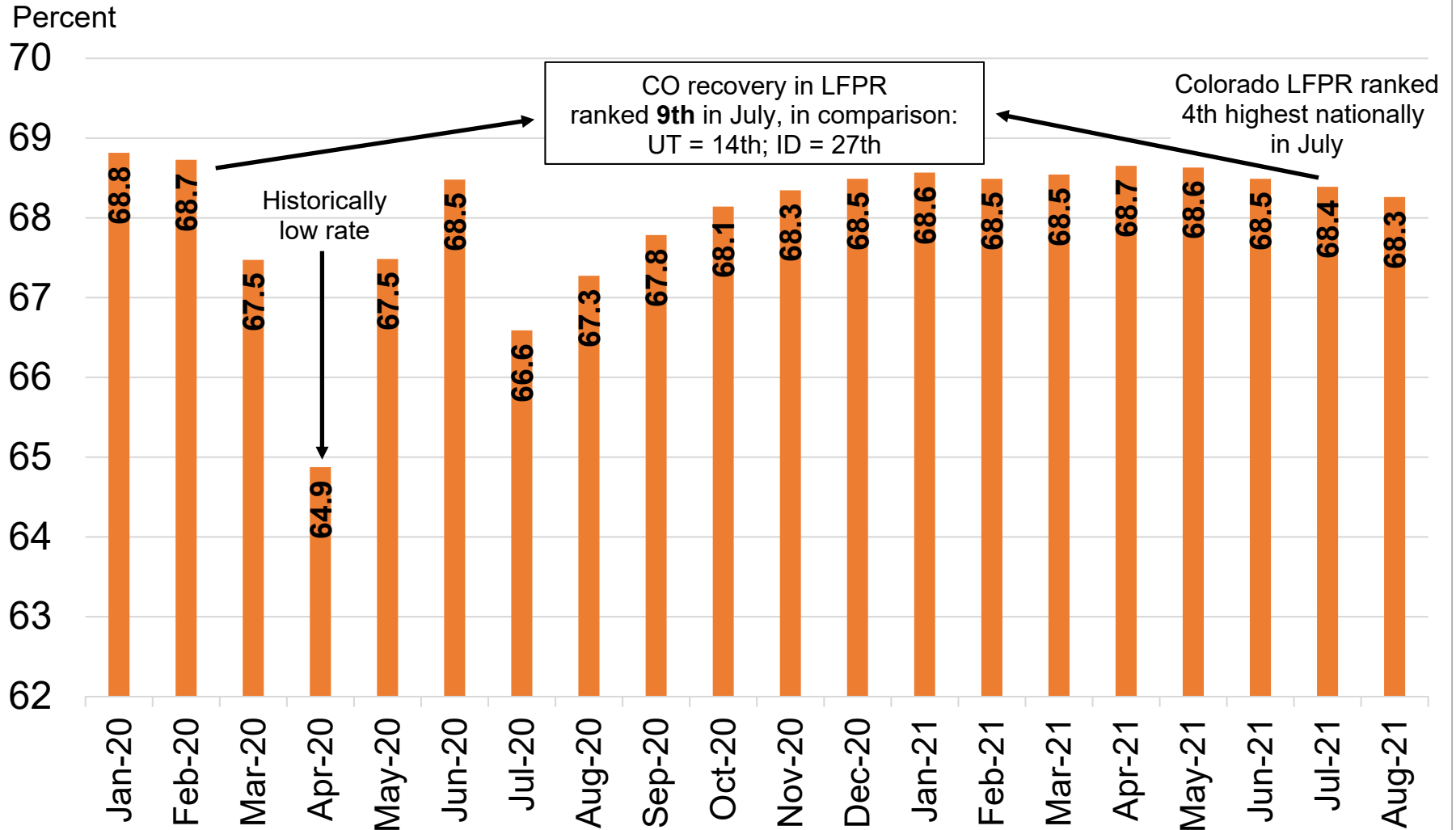
Source: Colorado Department of Labor and Employment; Bureau of Labor Statistics

Data seasonally adjusted

*Note: starting 2021, a new methodology is being used in the calculation of state labor force statistics. This caused revisions of prior year's data back to 1976. Colorado's peak unemployment rate during the Great Recession is now 9.4%, rather than the previously published 8.9%. For more information: <https://www.bls.gov/lau/launews1.htm>

■ Colorado ■ U.S.

Colorado's Labor Force Participation Rate Has Ranged Between 68.3% and 68.7% Since November

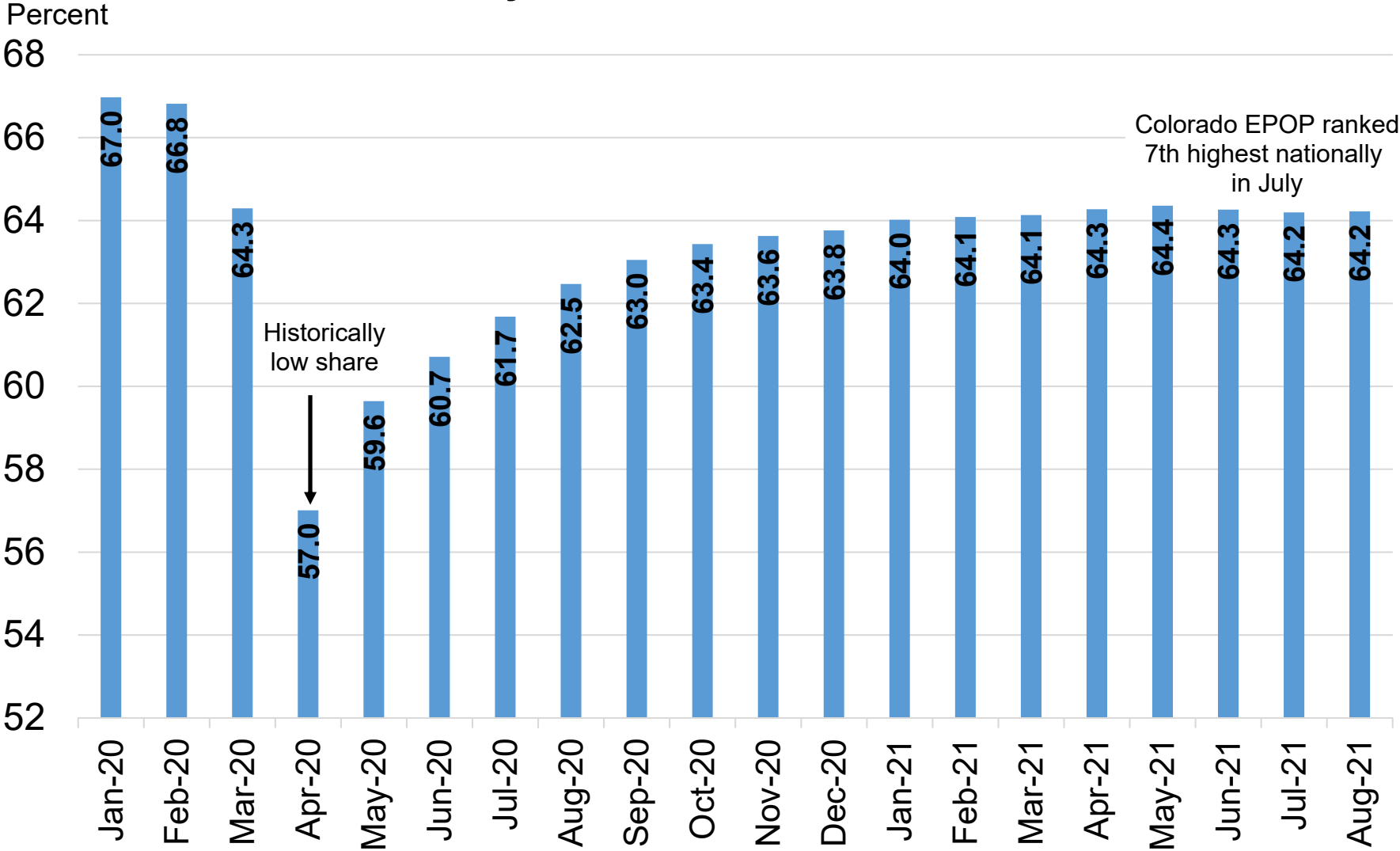


Source: Colorado Department of Labor and Employment; Bureau of Labor Statistics

Data seasonally adjusted. Estimates share of Colorado's 16+ population that is in the labor force in a given month.

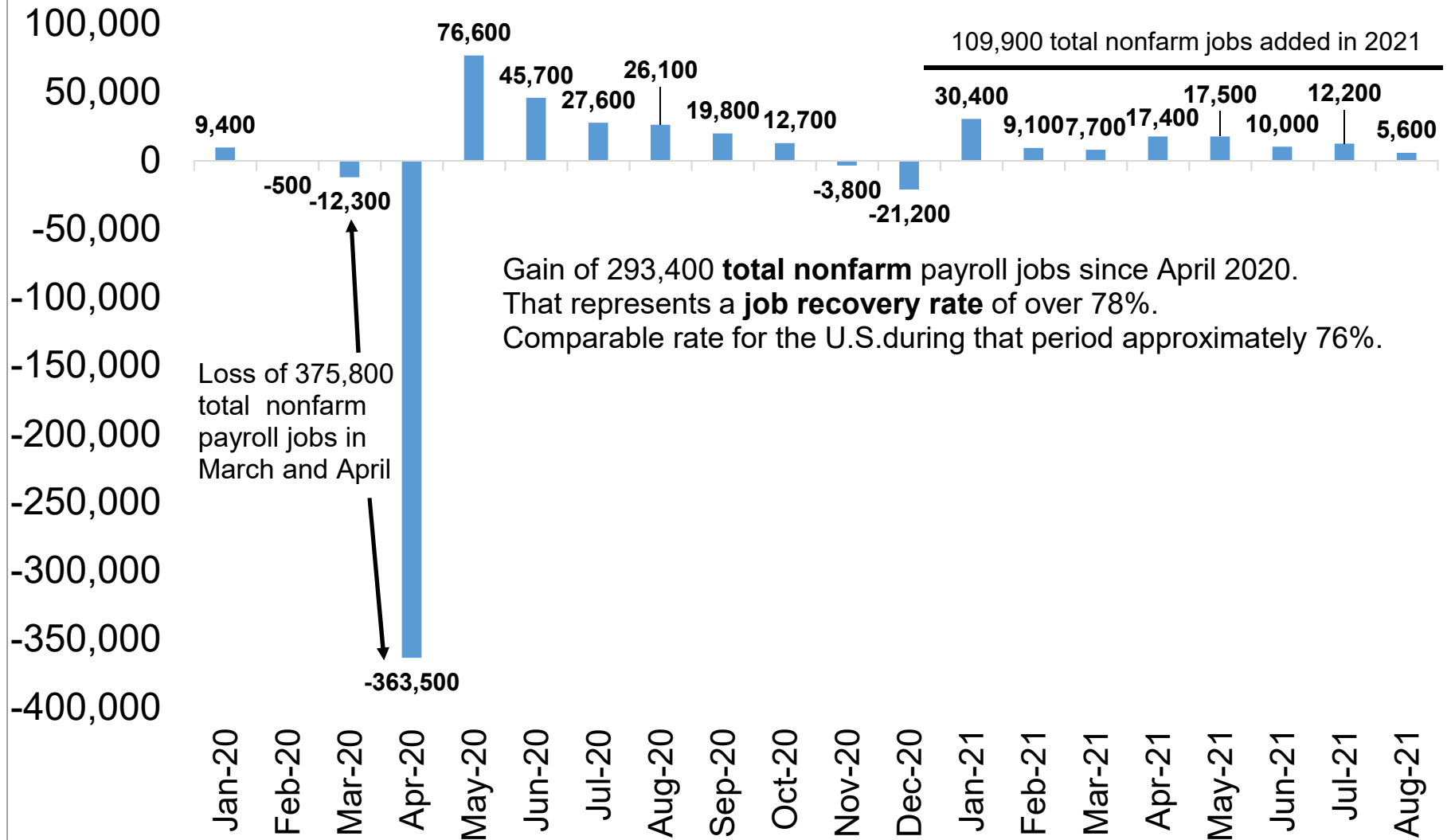
For further information on labor force definitions, go here: <https://www.bls.gov/lau/laufaq.htm>

Colorado's Employment-to-Population Ratio Essentially Flat Over Past Five Months



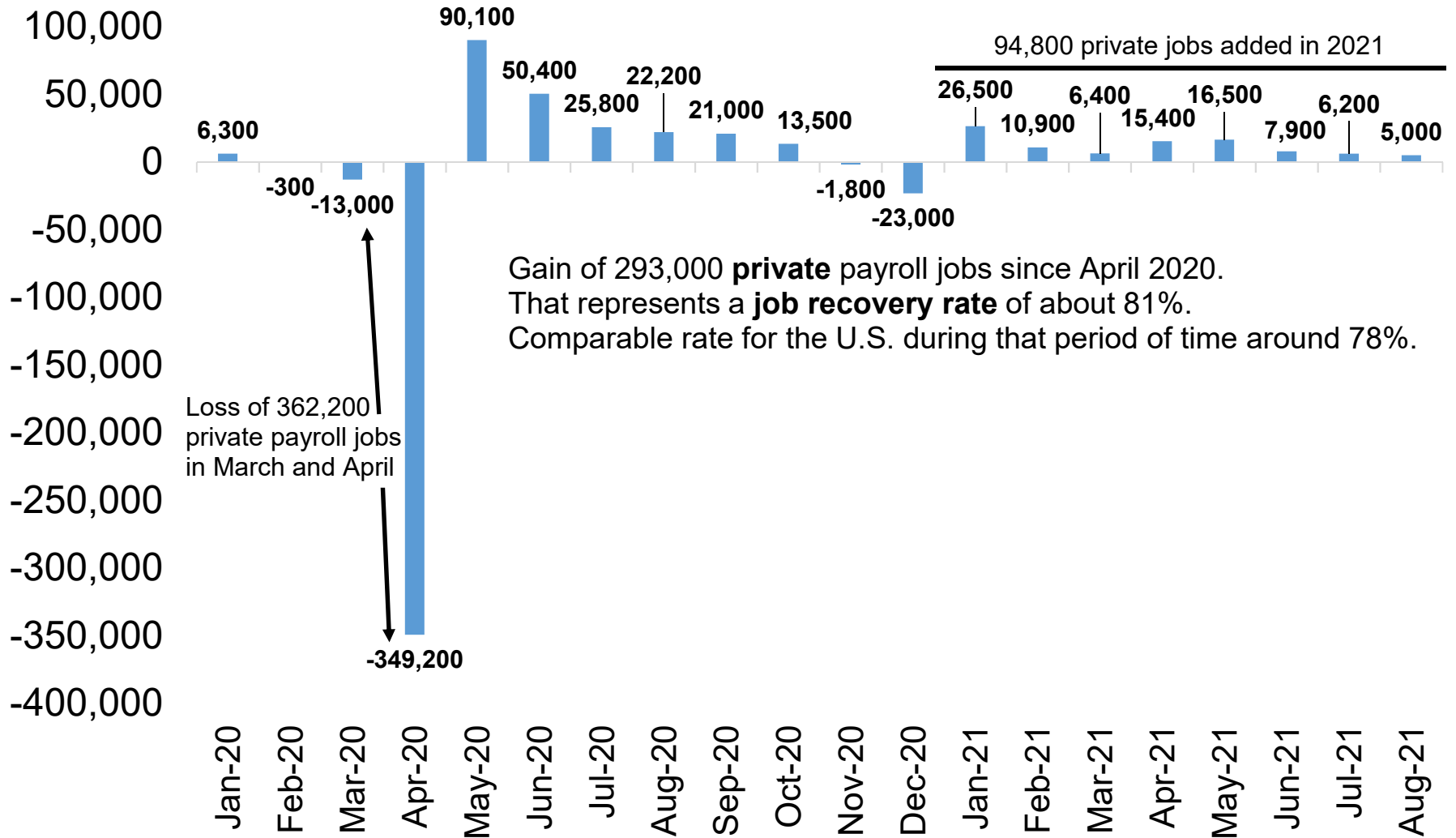
Source: Colorado Department of Labor and Employment; Bureau of Labor Statistics
Data seasonally adjusted. Estimates share of Colorado's 16+ population that is employed in a given month.

Colorado Added 5,600 Total Nonfarm Jobs in August; Lower Pace of Job Gains Mirrors U.S. for Month



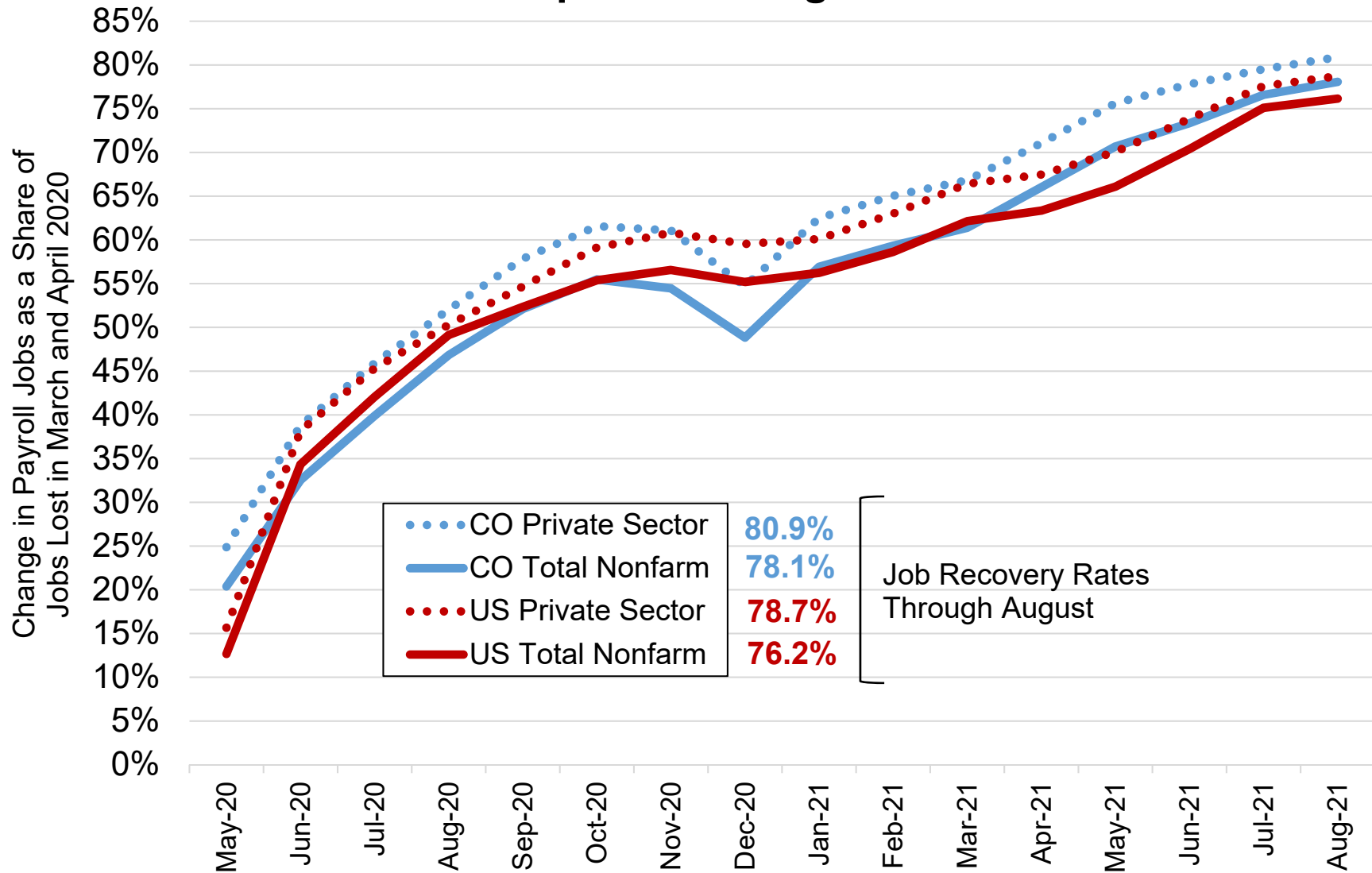
Source: Colorado Department of Labor and Employment; Bureau of Labor Statistics
Data seasonally adjusted

5,000 Private Sector Jobs Added in August; July Numbers Revised Down 2,300



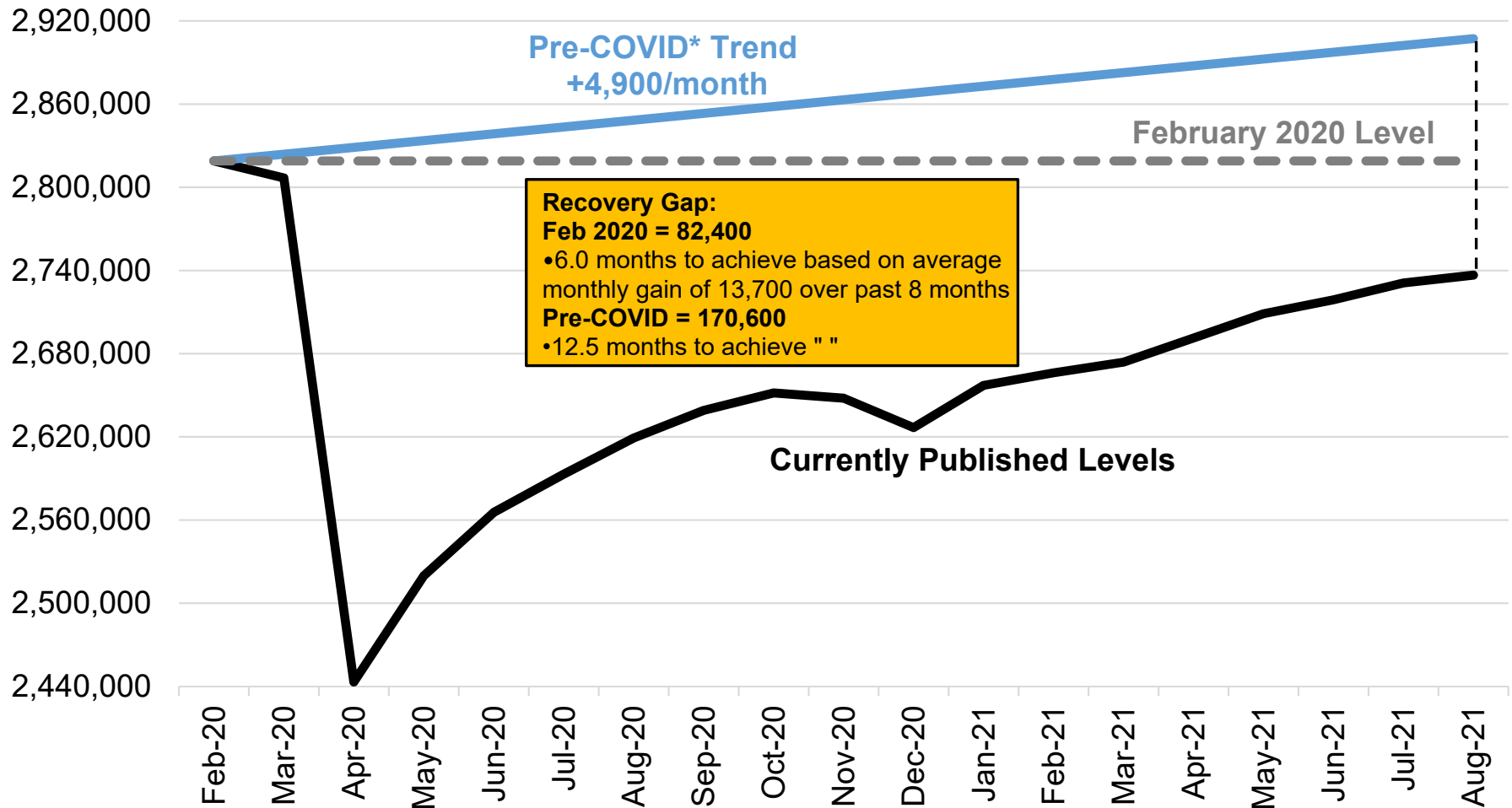
Source: Colorado Department of Labor and Employment; Bureau of Labor Statistics
Data seasonally adjusted

The National and Colorado Rates of Job Recovery Continue to Improve Throughout the Summer



Source: Colorado Department of Labor and Employment; Bureau of Labor Statistics
Data seasonally adjusted

Colorado Total Nonfarm Employment and the Gap Between Different Measures of Recovery Baselines

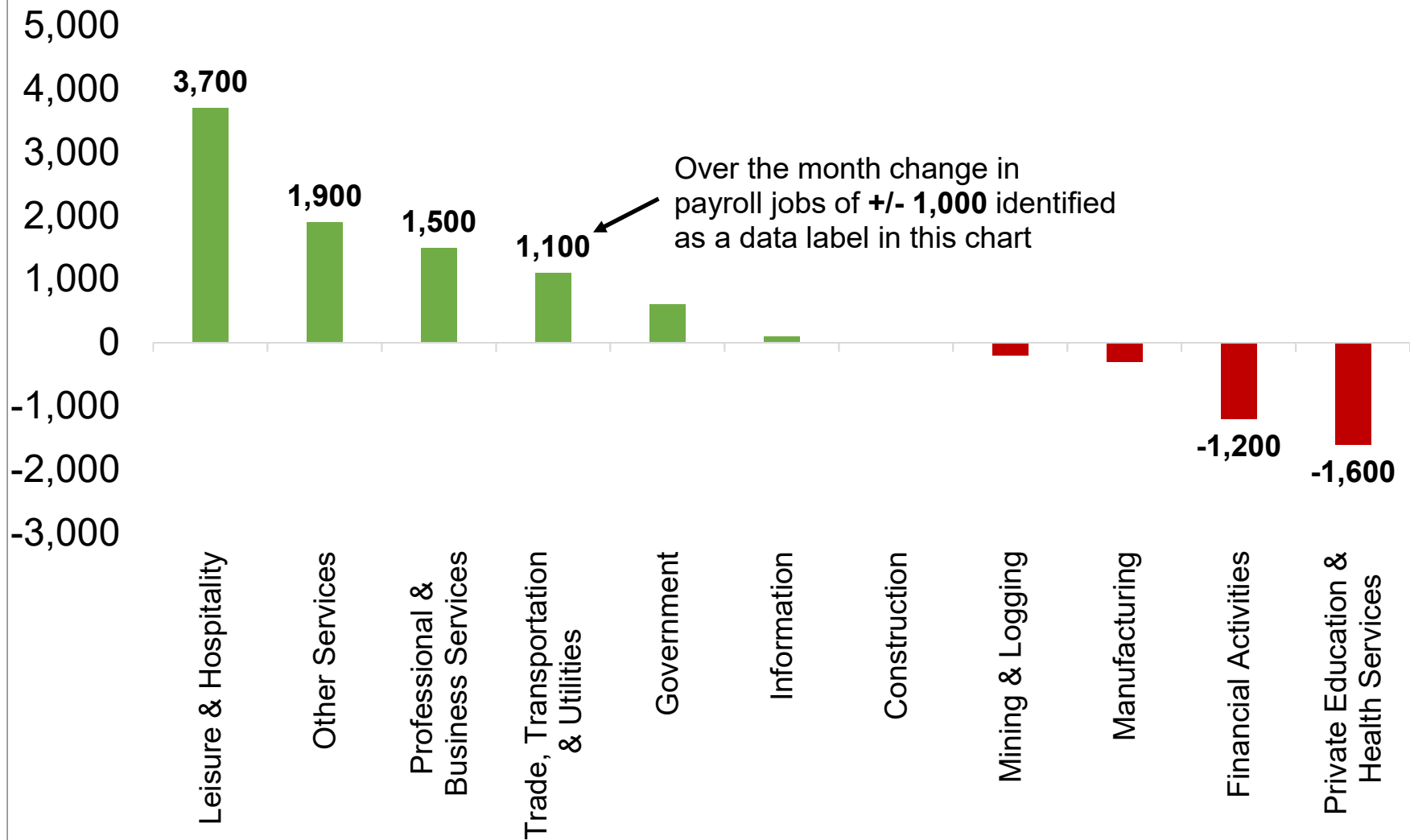


Source: Colorado Department of Labor and Employment; Bureau of Labor Statistics

Data seasonally adjusted

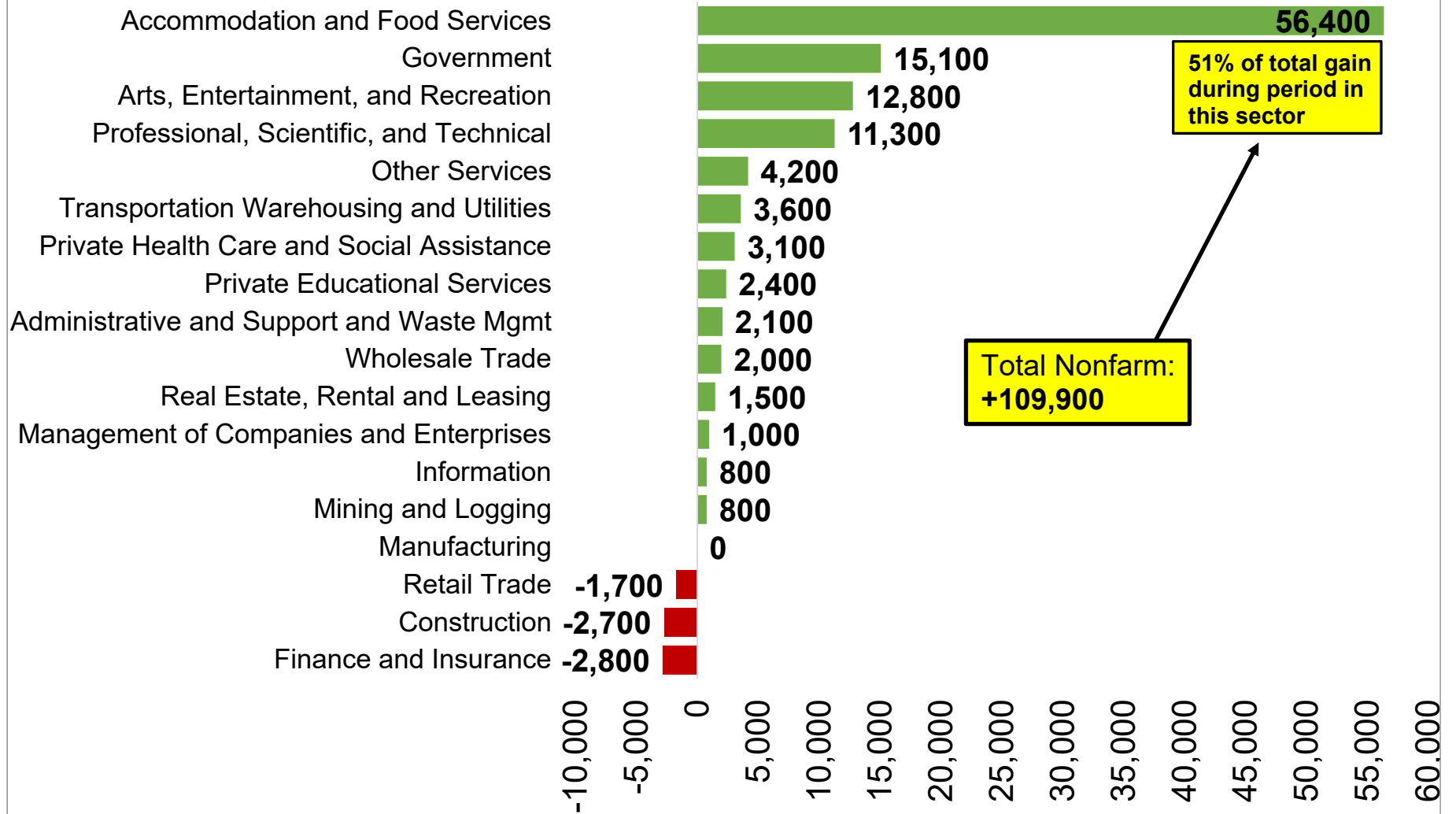
*Note: the **blue line** represents the trendline in the level of total nonfarm employment if the 2019 average monthly gain of 4,900 payroll jobs had held constant. This can be used as a baseline if no pandemic-related recession had occurred and job growth had continued at an uninterrupted pace.

Several Industries Had Sizeable Gains in August, While Losses Were Experienced in a Few Sectors



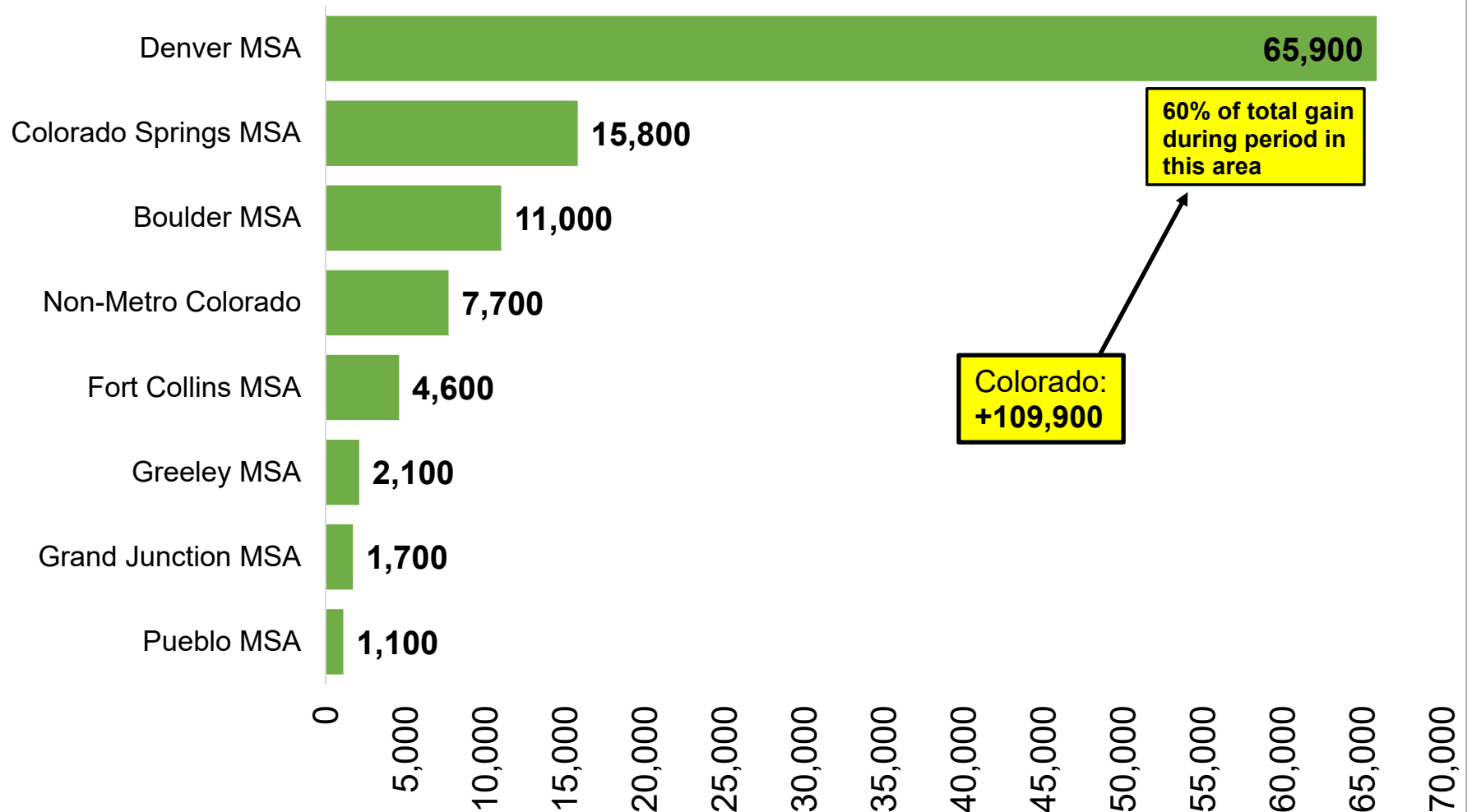
Source: Colorado Department of Labor and Employment; Bureau of Labor Statistics
Data seasonally adjusted

Change in Payroll Jobs First Eight Months of 2021, by Industry Sector



Source: Colorado Department of Labor and Employment; Bureau of Labor Statistics
Data seasonally adjusted

Change in Payroll Jobs First Eight Months of 2021, by Colorado Substate Area

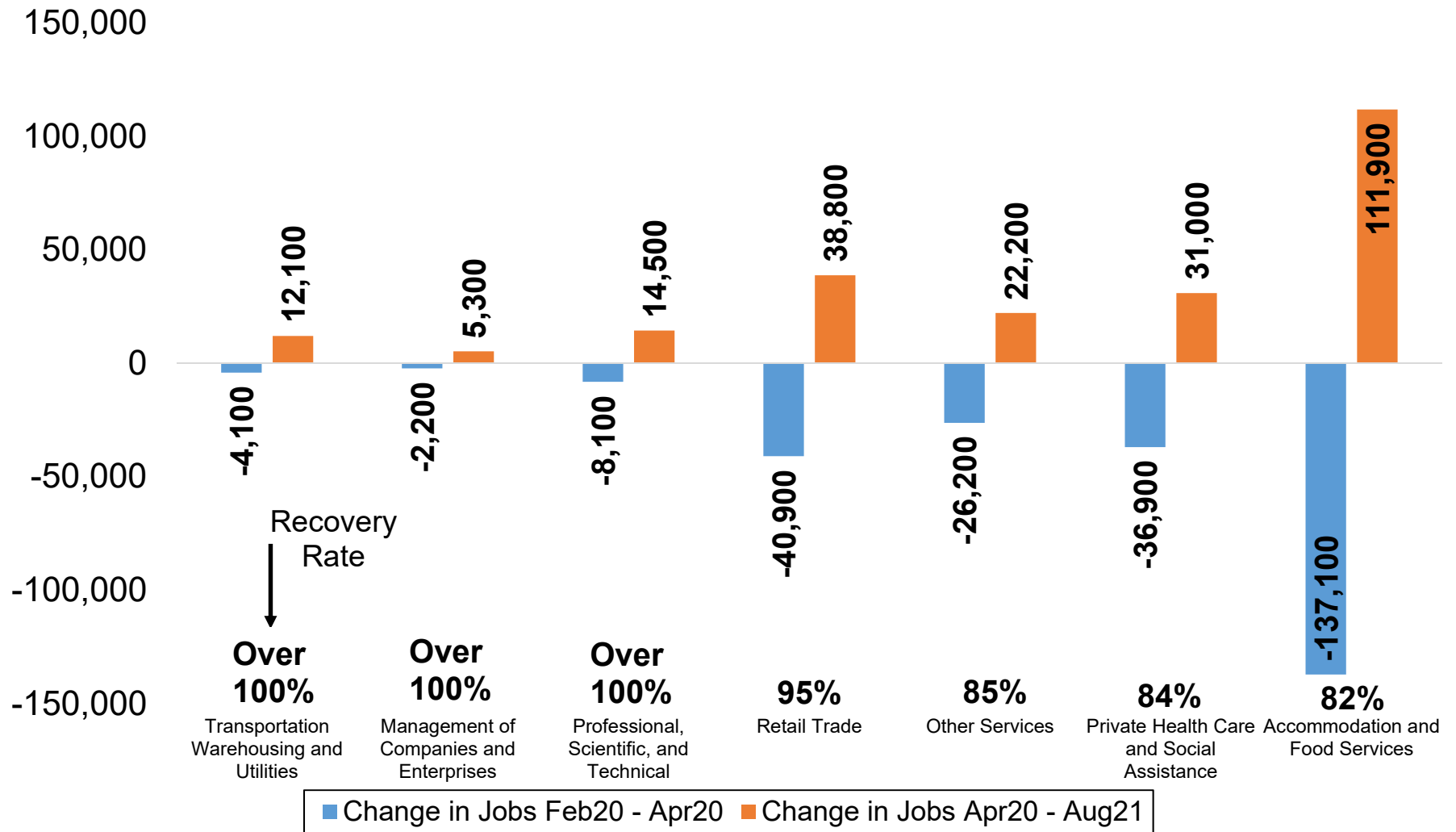


Source: Colorado Department of Labor and Employment; Bureau of Labor Statistics

Data seasonally adjusted

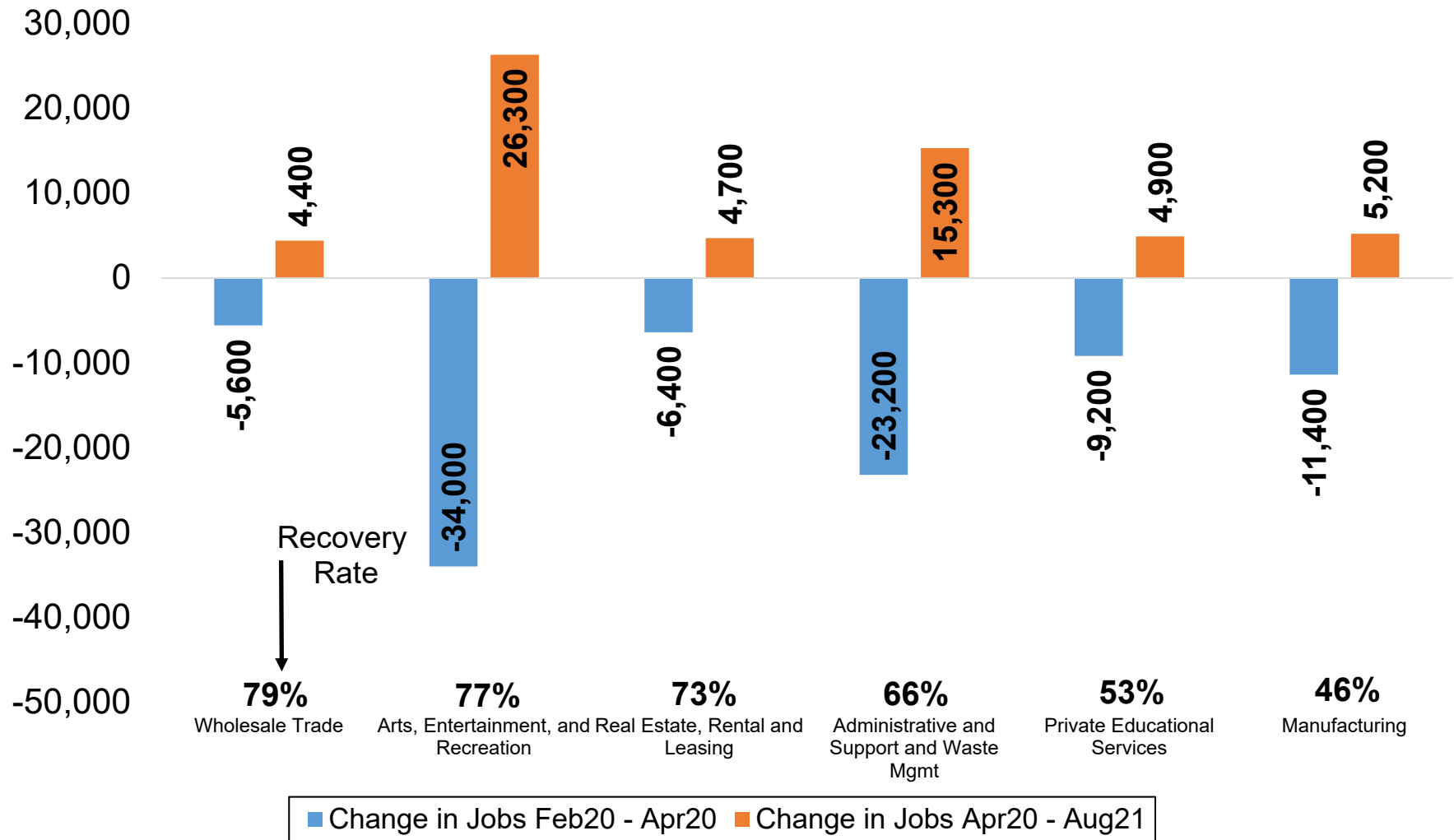
Note: MSA = Metropolitan Statistical Area; Non-Metro Colorado = residual of state that is not an MSA (47 counties)

Colorado Industry Sectors with the Fastest Payroll Job Recovery Rates



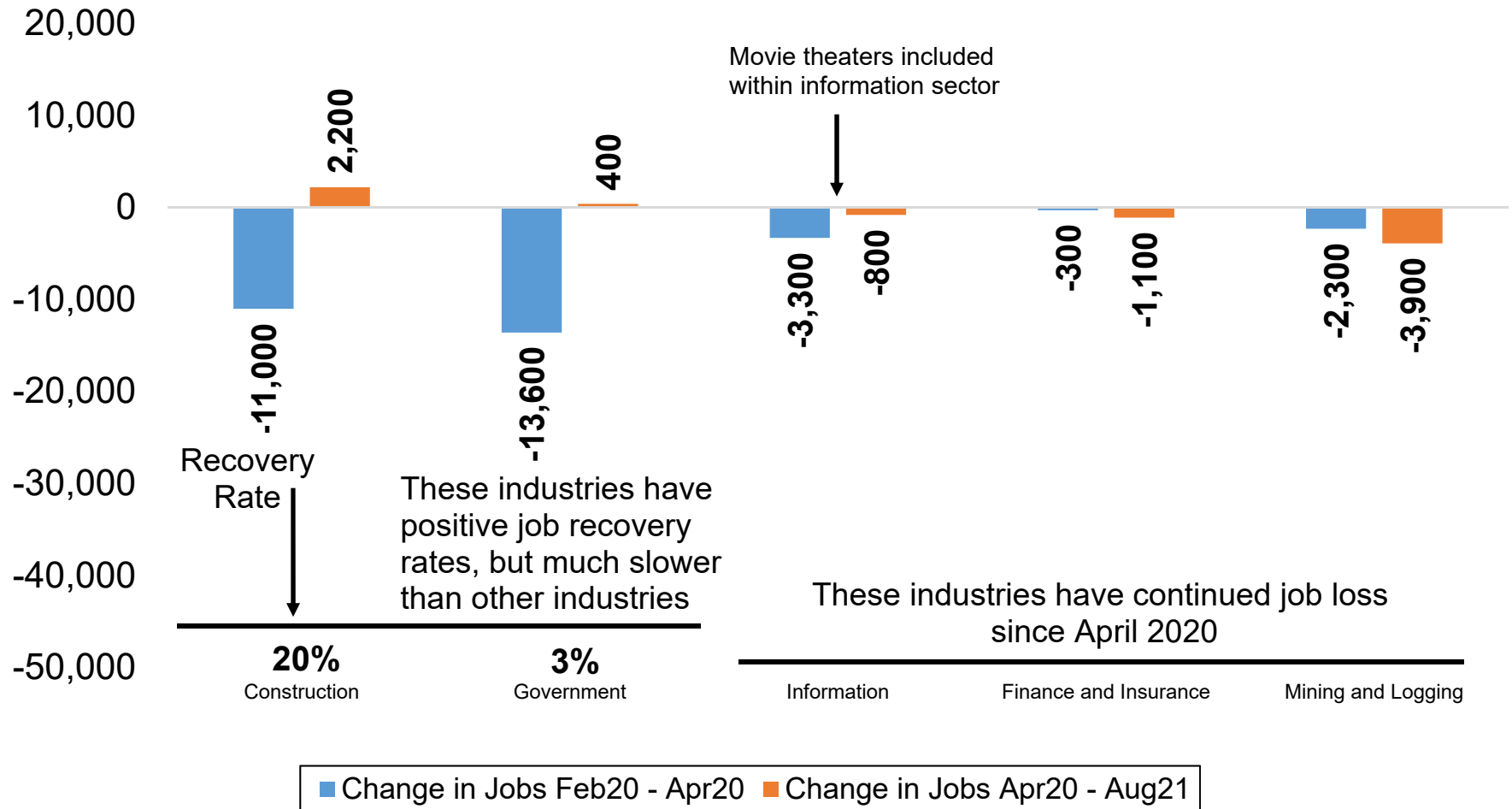
Source: Colorado Department of Labor and Employment; Bureau of Labor Statistics
Data seasonally adjusted

Colorado Industry Sectors with Payroll Job Recovery Rates Between 46 and 79 Percent



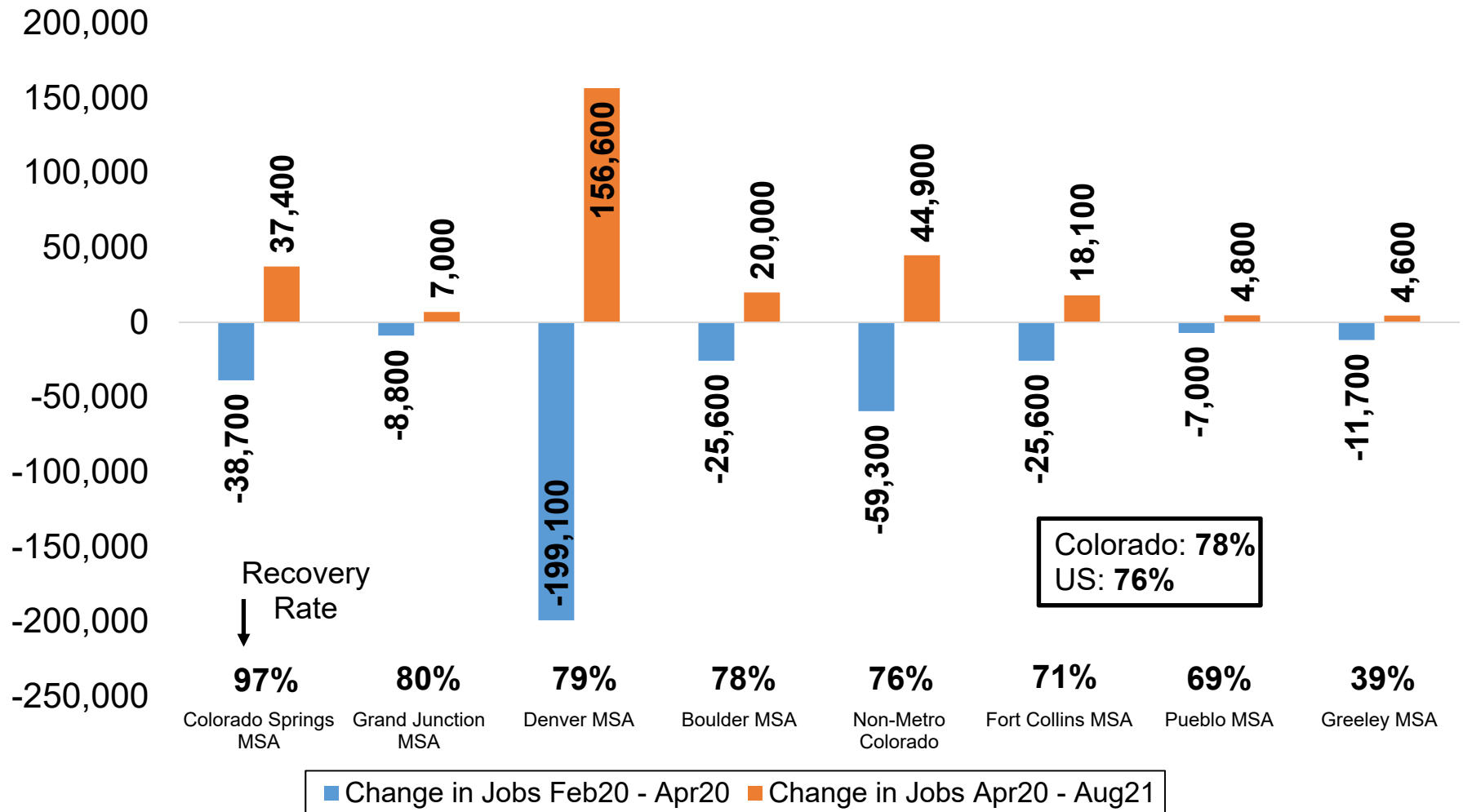
Source: Colorado Department of Labor and Employment; Bureau of Labor Statistics
 Data seasonally adjusted

Colorado Industry Sectors with Relatively Low Recovery Rates or with Continued Losses in Payroll Jobs



Source: Colorado Department of Labor and Employment; Bureau of Labor Statistics
Data seasonally adjusted

Total Nonfarm Job Recovery Rates by Colorado Substate Area

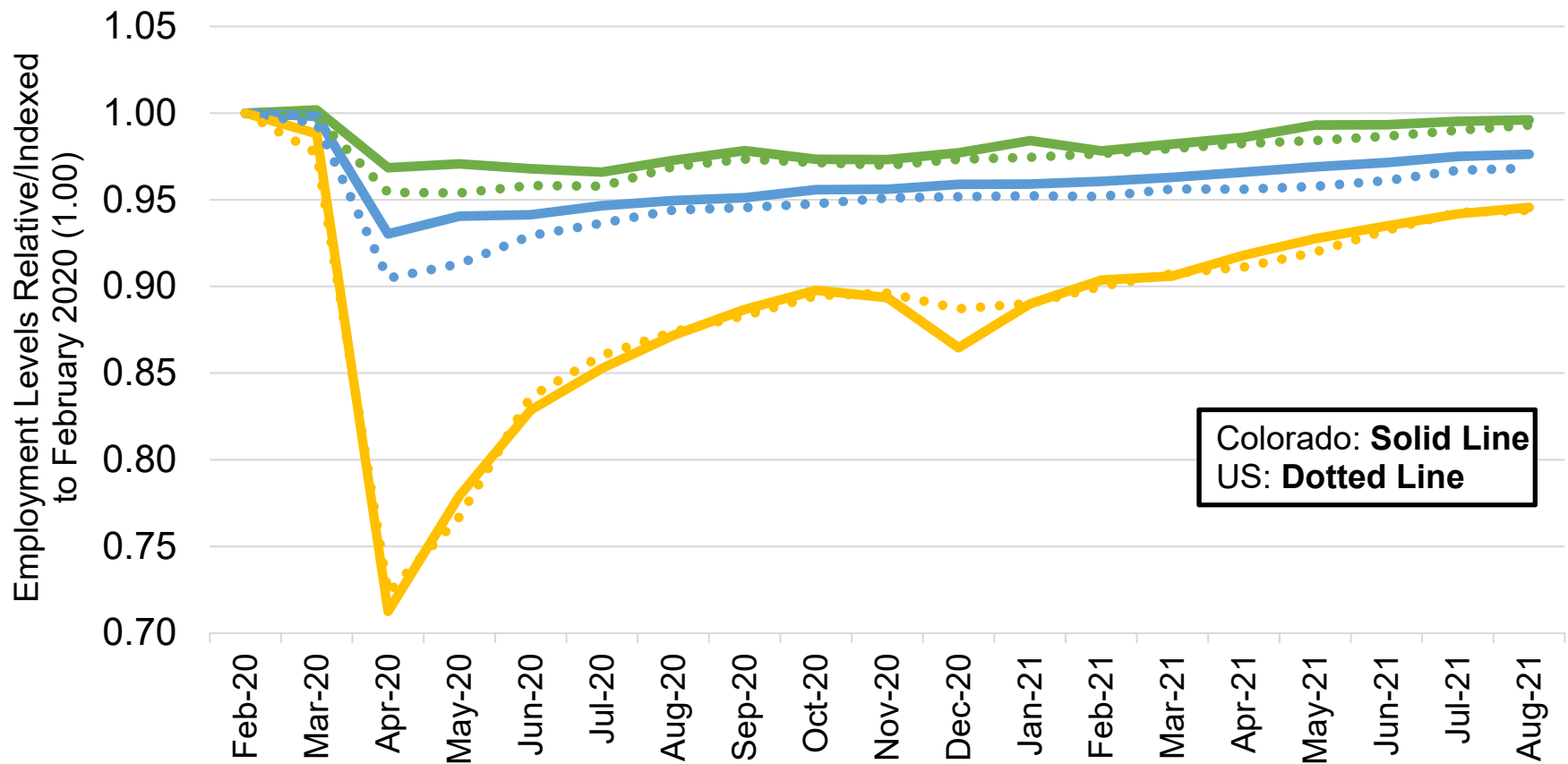


Source: Colorado Department of Labor and Employment; Bureau of Labor Statistics

Data seasonally adjusted

Note: MSA = Metropolitan Statistical Area; Non-Metro Colorado = residual of state that is not an MSA (47 total counties)

Job Loss and Recovery by Low, Medium, and High Wage Industries (Colorado & U.S.)



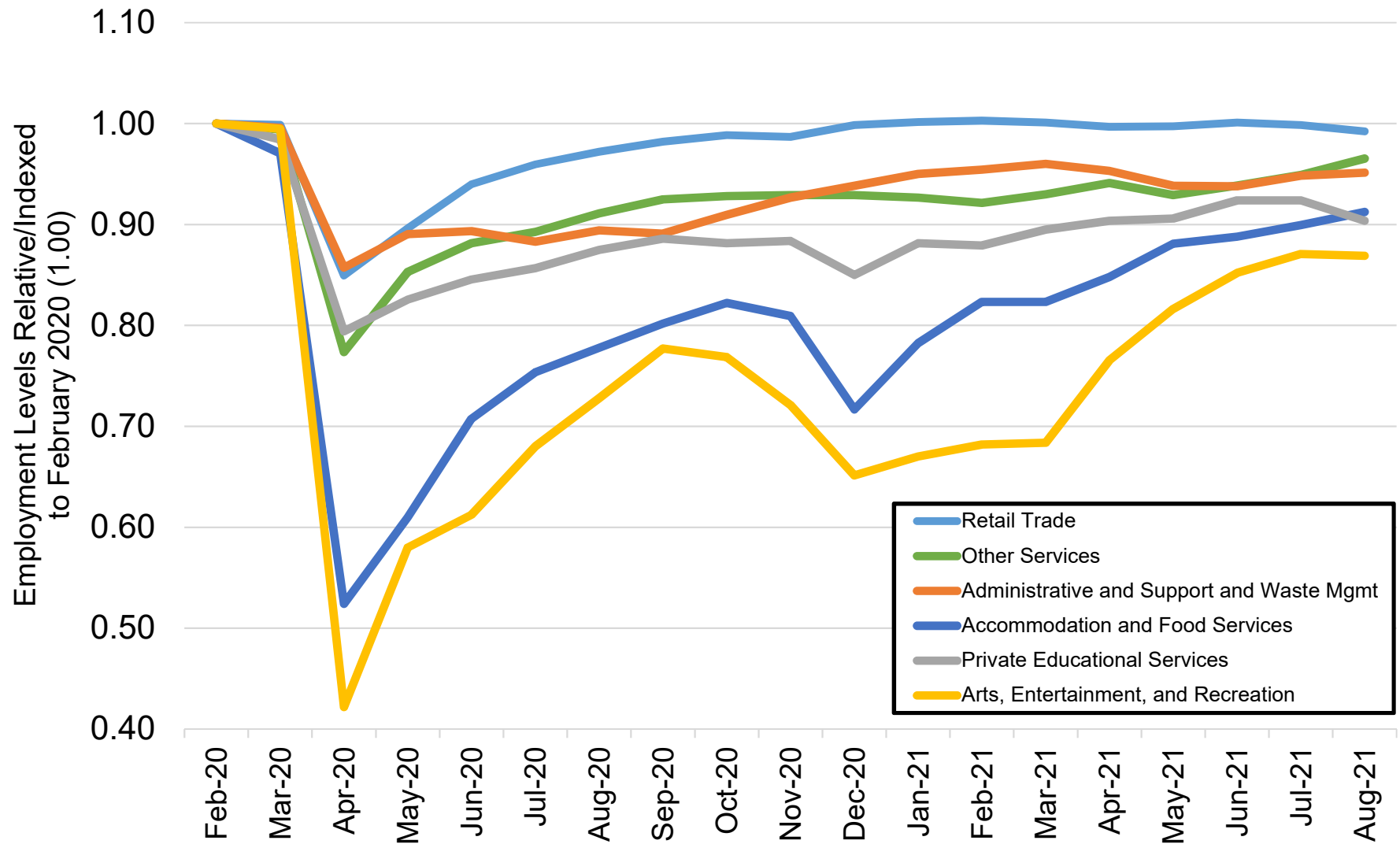
Colorado: **Solid Line**
US: **Dotted Line**

Source: Colorado Department of Labor and Employment; Bureau of Labor Statistics

Data seasonally adjusted. Note: low, medium, and high wage industries are determined by the 2019 state-level average weekly wage estimates from the Quarterly Census of Employment and Wages. **Low wage industries include:** retail trade; admin support/waste mgmt; private education services; arts, entertainment, and recreation; accommodation and food services; and other services. **Medium wage industries include:** construction; manufacturing; transportation, warehousing, and utilities; real estate, rental, and leasing; private health care and social assistance; state government; and local government.

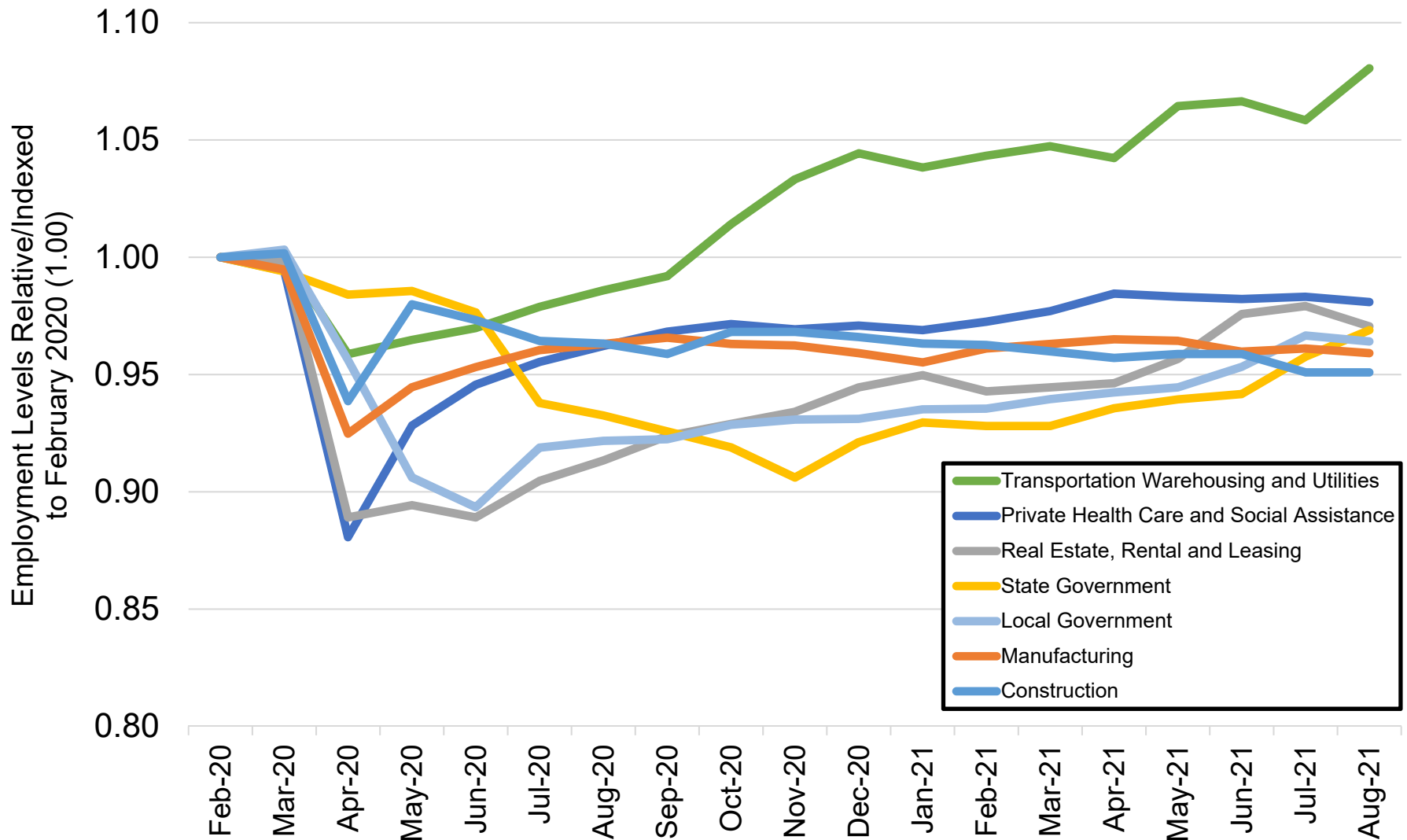
High wage industries include: mining and logging; wholesale trade; finance and insurance; professional and technical services; management of companies; and federal government.

Colorado Job Loss & Recovery by Low Wage Industries



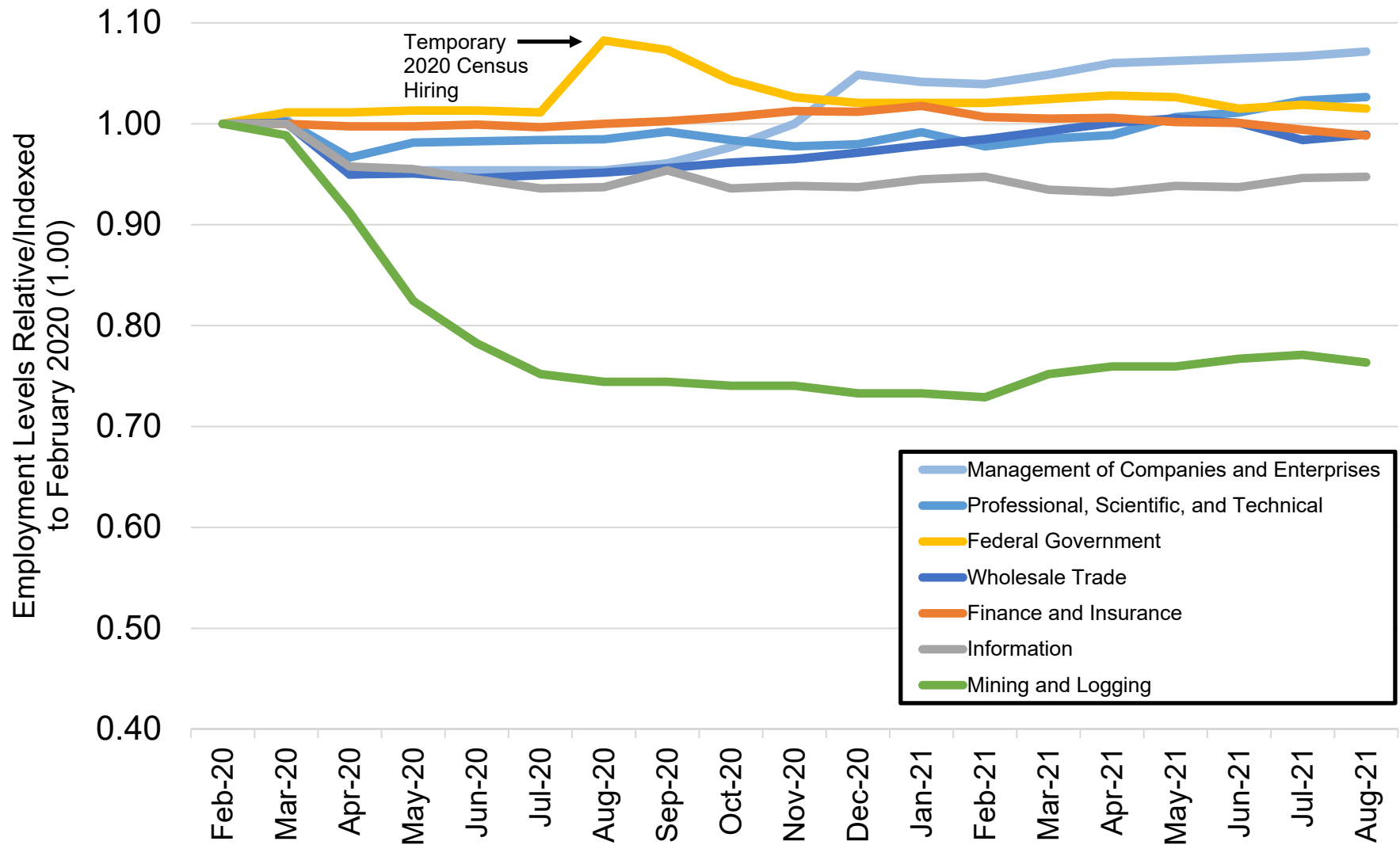
Source: Colorado Department of Labor and Employment; Bureau of Labor Statistics
 Data seasonally adjusted. Note: low wage industries are determined by the 2019 state-level average weekly wage estimates from the Quarterly Census of Employment and Wages.

Colorado Job Loss & Recovery by Medium Wage Industries



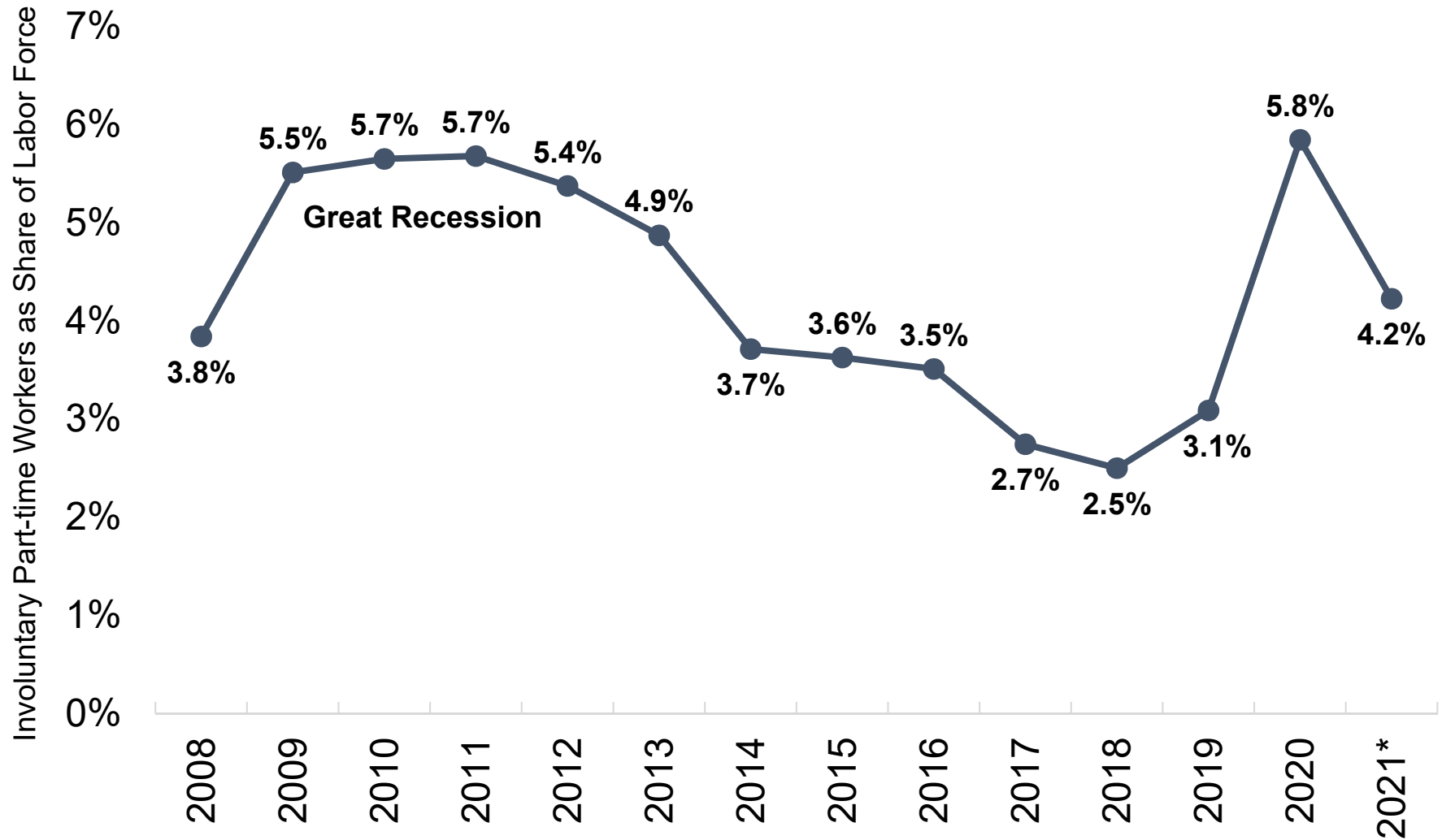
Source: Colorado Department of Labor and Employment; Bureau of Labor Statistics
 Data seasonally adjusted. Note: medium wage industries are determined by the 2019 state-level average weekly wage estimates from the Quarterly Census of Employment and Wages.

Colorado Job Loss & Recovery by High Wage Industries



Source: Colorado Department of Labor and Employment; Bureau of Labor Statistics
 Data seasonally adjusted. Note: high wage industries are determined by the 2019 state-level average weekly wage estimates from the Quarterly Census of Employment and Wages.

Involuntary Part-Time Workers as Share of Labor Force



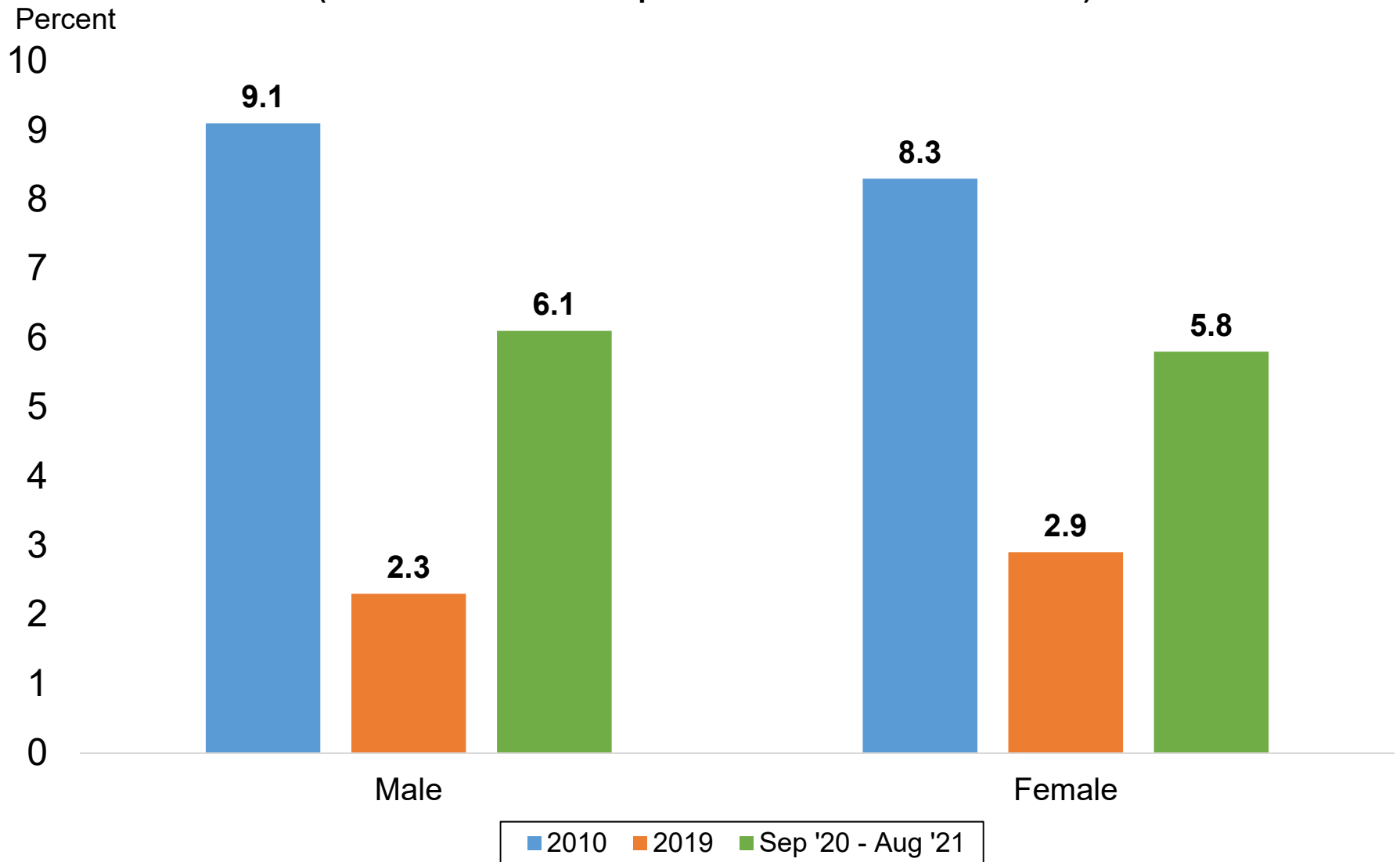
Source: Current Population Survey

Data not seasonally adjusted. Involuntary part-time workers are those individuals who are working part-time hours (34 hours or less), but prefer full-time hours (35+ hours).

*Average through the first eight months of 2021.

Unemployment Rates by Gender

(Most recent 12-month period available vs. 2010 & 2019)

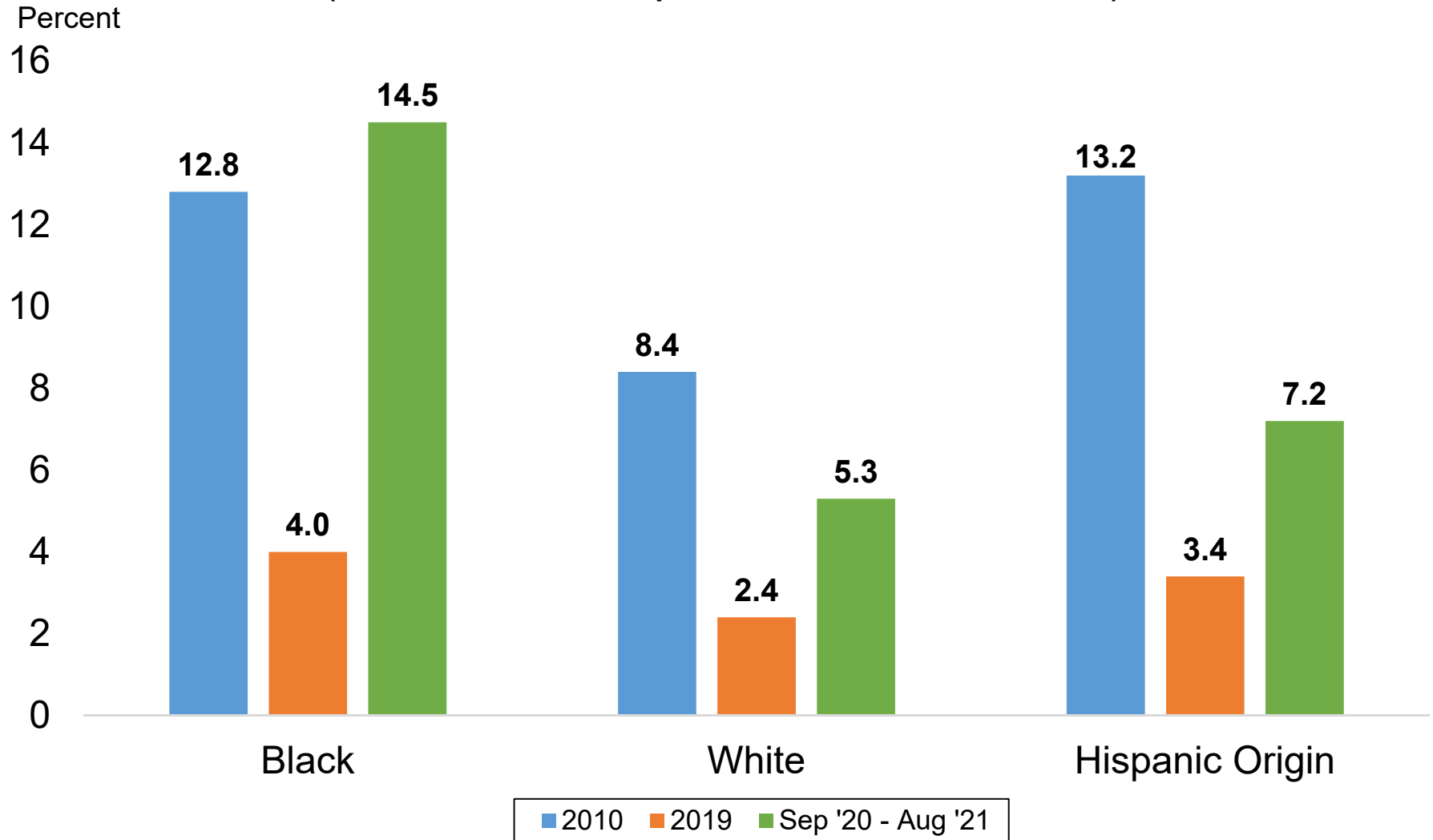


Source: Current Population Survey

Data not seasonally adjusted. Unemployment rates by gender for individuals 16 years and older.

Unemployment Rates by Race & Ethnicity

(Most recent 12-month period available vs. 2010 & 2019)

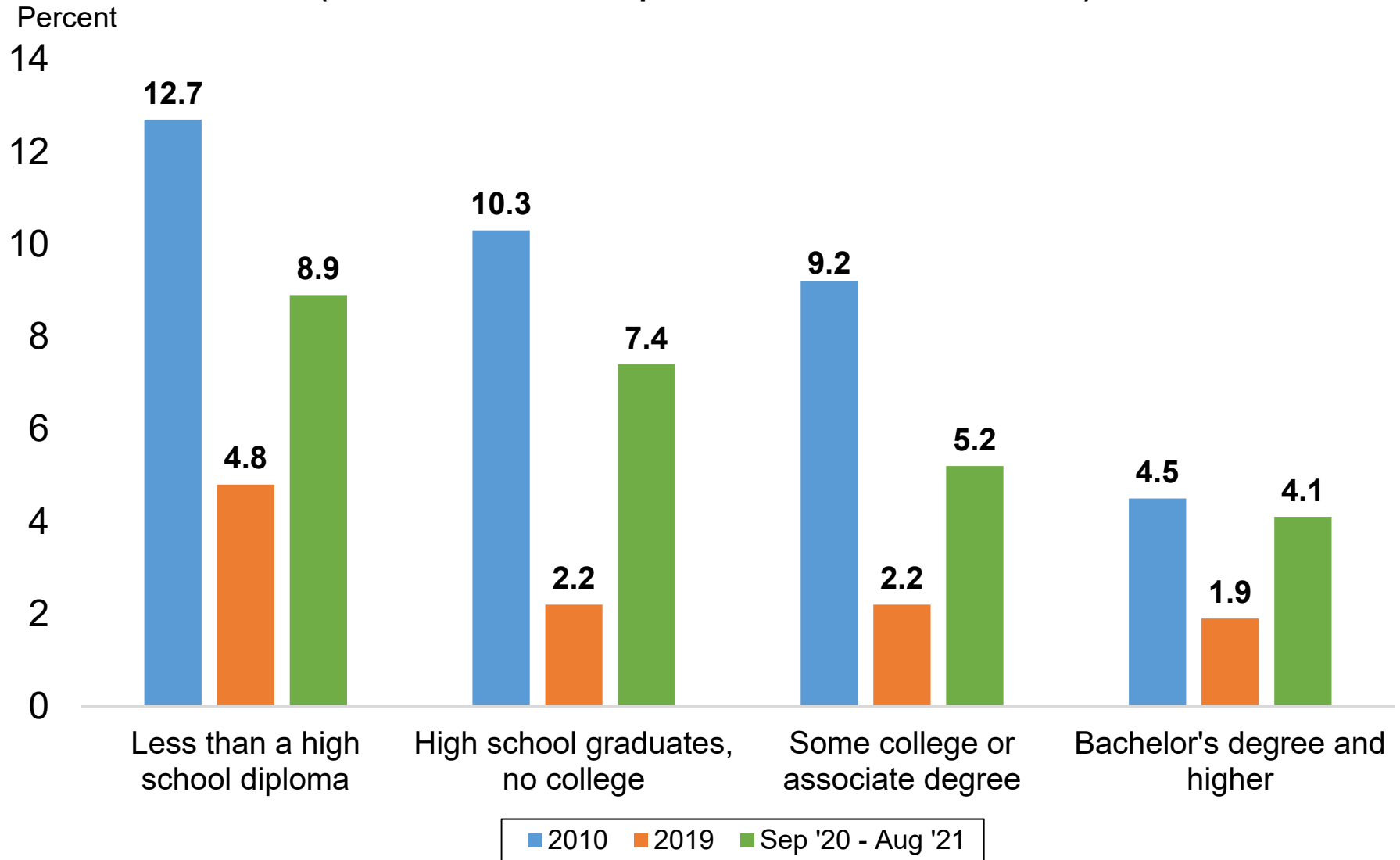


Source: Current Population Survey

Data not seasonally adjusted. Other race categories excluded due to small sample size. Hispanic origin category is not mutually exclusive (i.e. hispanic and non-hispanic ethnicities are represented in both race categories).

Unemployment Rates by Educational Attainment

(Most recent 12-month period available vs. 2010 & 2019)

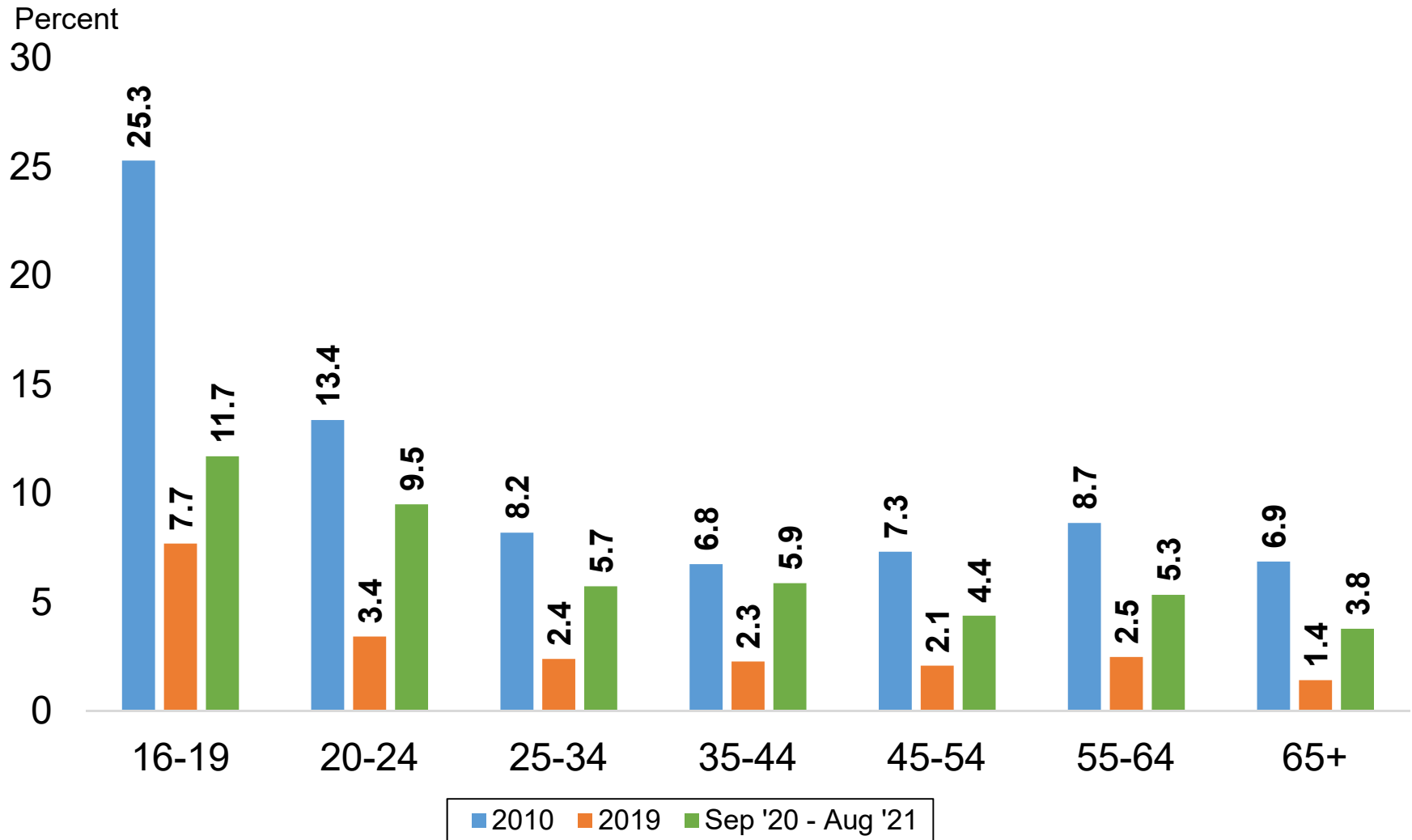


Source: Current Population Survey

Data not seasonally adjusted. Unemployment rates by educational attainment for individuals 25 years and over.

Unemployment Rates by Age Group

(Most recent 12-month period available vs. 2010 & 2019)



Source: Current Population Survey
Data not seasonally adjusted.

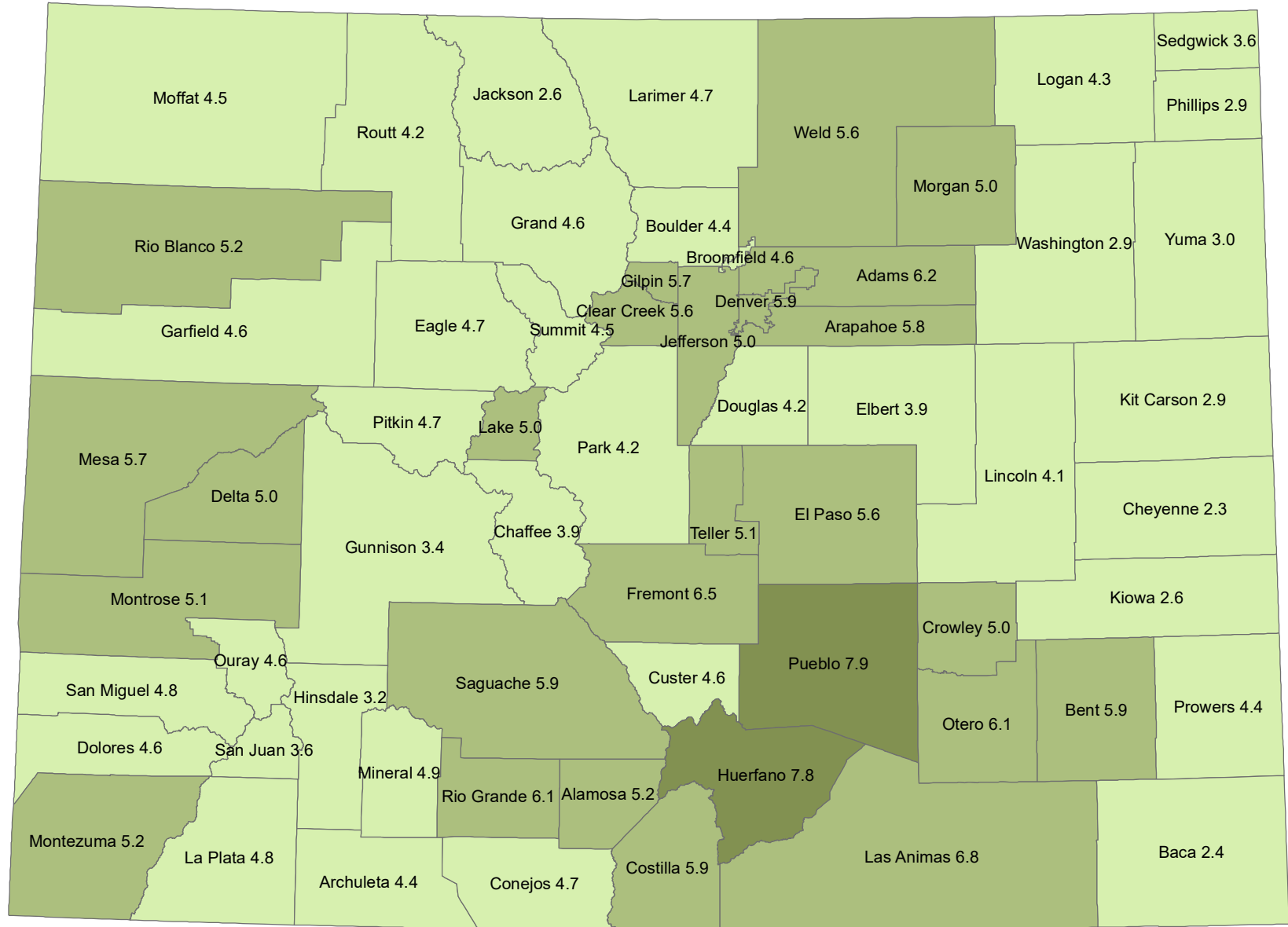
LABOR FORCE SUMMARY
COLORADO
Preliminary Estimates for August 2021

LABOR FORCE DATA (VALUES IN THOUSANDS)					
SEASONALLY ADJUSTED:				Change from last:	
	Aug-21	Jul-21	Aug-20	Month	Year
Total Civilian Labor Force	3,193.2	3,195.5	3,105.8	-2.3	87.4
Unemployment	189.0	196.0	221.8	-7.0	-32.8
Unemployment Rate (%)	5.9	6.1	7.1	-0.2	-1.2
Employment	3,004.2	2,999.5	2,884.1	4.7	120.2
UNADJUSTED FOR SEASONALITY:				Change from last:	
	Aug-21	Jul-21	Aug-20	Month	Year
Total Civilian Labor Force	3,195.5	3,194.0	3,125.9	1.6	69.6
Unemployment	171.3	190.1	219.5	-18.8	-48.2
Unemployment Rate (%)	5.4	6.0	7.0	-0.6	-1.6
Employment	3,024.2	3,003.9	2,906.4	20.4	117.8

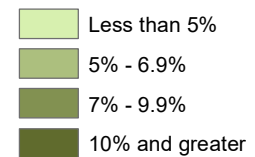
WAGE AND SALARY EMPLOYMENT DATA (VALUES IN THOUSANDS)					
SEASONALLY ADJUSTED:				Change from last:	
	Aug-21	Jul-21	Aug-20	Month	Year
Mining & Logging	20.0	20.2	19.5	-0.2	0.5
Construction	170.5	170.5	172.7	0.0	-2.2
Manufacturing	145.4	145.7	146.0	-0.3	-0.6
Trade, Transportation, & Utilities	487.3	486.2	468.2	1.1	19.1
Information	73.9	73.8	73.1	0.1	0.8
Financial Activities	173.0	174.2	171.1	-1.2	1.9
Professional & Business Services	449.1	447.6	424.6	1.5	24.5
Educational & Health Services	343.7	345.3	336.6	-1.6	7.1
Leisure & Hospitality	314.0	310.3	266.9	3.7	47.1
Other Services	111.7	109.8	105.4	1.9	6.3
Government	448.0	447.4	435.1	0.6	12.9
TOTAL NONAG	2,736.6	2,731.0	2,619.2	5.6	117.4
Labor Disputants	0.0	0.0	0.0	0.0	0.0
UNADJUSTED FOR SEASONALITY:				Change from last:	
	Aug-21	Jul-21	Aug-20	Month	Year
Mining & Logging	20.0	20.4	19.4	-0.4	0.6
Construction	176.0	175.4	176.9	0.6	-0.9
Manufacturing	146.0	146.8	146.3	-0.8	-0.3
Trade, Transportation, & Utilities	486.9	488.2	468.2	-1.3	18.7
Information	73.9	73.5	73.2	0.4	0.7
Financial Activities	174.4	175.7	171.8	-1.3	2.6
Professional & Business Services	456.2	455.0	430.8	1.2	25.4
Educational & Health Services	342.1	343.8	335.8	-1.7	6.3
Leisure & Hospitality	329.3	331.5	279.4	-2.2	49.9
Other Services	113.2	110.8	107.0	2.4	6.2
Government	434.2	428.2	423.2	6.0	11.0
TOTAL NONAG	2,752.2	2,749.3	2,632.0	2.9	120.2
Labor Disputants	0.0	0.0	0.0	0.0	0.0

Source: Colorado Department of Labor & Employment; Bureau of Labor Statistics

NOT SEASONALLY ADJUSTED Unemployment Rates August 2021



Source: Colorado Department of Labor and Employment
Labor Market Information



Not Seasonally Adjusted Labor Force

	August 2021				July 2021			
	Labor Force	Employment	Unemployment	Rate	Labor force	Employment	Unemployment	Rate
Colorado	3,195,524	3,024,237	171,287	5.4	3,193,950	3,003,878	190,072	6.0
Metropolitan Statistical Area								
Boulder	196,694	188,027	8,667	4.4	195,449	185,825	9,624	4.9
Colorado Springs	370,445	349,738	20,707	5.6	370,723	347,558	23,165	6.2
Denver-Aurora-Lakewood	1,713,045	1,619,244	93,801	5.5	1,709,513	1,605,449	104,064	6.1
Fort Collins	205,389	195,772	9,617	4.7	203,744	193,211	10,533	5.2
Grand Junction	76,666	72,309	4,357	5.7	75,875	70,950	4,925	6.5
Greeley	168,180	158,713	9,467	5.6	167,169	156,696	10,473	6.3
Pueblo	78,228	72,024	6,204	7.9	78,216	71,220	6,996	8.9
Counties								
Adams	282,091	264,700	17,391	6.2	281,695	262,202	19,493	6.9
Alamosa	8,629	8,183	446	5.2	8,844	8,338	506	5.7
Arapahoe	376,121	354,341	21,780	5.8	375,682	351,353	24,329	6.5
Archuleta	7,846	7,499	347	4.4	7,998	7,615	383	4.8
Baca	2,332	2,275	57	2.4	2,410	2,355	55	2.3
Bent	1,979	1,863	116	5.9	1,989	1,862	127	6.4
Boulder	196,694	188,027	8,667	4.4	195,449	185,825	9,624	4.9
Broomfield	41,274	39,369	1,905	4.6	41,027	38,957	2,070	5.0
Chaffee	10,869	10,447	422	3.9	11,107	10,665	442	4.0
Cheyenne	1,178	1,151	27	2.3	1,215	1,187	28	2.3
Clear Creek	6,256	5,903	353	5.6	6,245	5,862	383	6.1
Conejos	4,203	4,005	198	4.7	4,301	4,083	218	5.1
Costilla	1,824	1,716	108	5.9	1,874	1,758	116	6.2
Crowley	1,603	1,523	80	5.0	1,625	1,535	90	5.5
Custer	2,271	2,166	105	4.6	2,355	2,253	102	4.3
Delta	14,986	14,243	743	5.0	15,261	14,471	790	5.2
Denver	433,385	407,788	25,597	5.9	432,681	404,281	28,400	6.6
Dolores	1,198	1,143	55	4.6	1,183	1,126	57	4.8
Douglas	200,753	192,298	8,455	4.2	199,805	190,564	9,241	4.6
Eagle	33,654	32,059	1,595	4.7	33,805	32,032	1,773	5.2
El Paso	357,072	337,041	20,031	5.6	357,313	334,881	22,432	6.3
Elbert	15,583	14,971	612	3.9	15,550	14,907	643	4.1
Fremont	17,234	16,111	1,123	6.5	17,601	16,394	1,207	6.9
Garfield	32,199	30,709	1,490	4.6	32,725	31,070	1,655	5.1
Gilpin	3,961	3,736	225	5.7	3,981	3,714	267	6.7
Grand	9,012	8,601	411	4.6	9,173	8,728	445	4.9
Gunnison	11,606	11,211	395	3.4	11,813	11,381	432	3.7
Hinsdale	503	487	16	3.2	535	520	15	2.8
Huerfano	2,867	2,642	225	7.8	2,981	2,722	259	8.7
Jackson	1,053	1,026	27	2.6	1,025	1,000	25	2.4
Jefferson	342,142	325,136	17,006	5.0	341,337	322,611	18,726	5.5
Kiowa	1,078	1,050	28	2.6	1,081	1,046	35	3.2
Kit Carson	4,505	4,376	129	2.9	4,656	4,518	138	3.0
La Plata	31,848	30,305	1,543	4.8	32,558	30,857	1,701	5.2
Lake	4,531	4,306	225	5.0	4,629	4,387	242	5.2
Larimer	205,389	195,772	9,617	4.7	203,744	193,211	10,533	5.2
Las Animas	6,819	6,358	461	6.8	6,917	6,422	495	7.2
Lincoln	2,580	2,473	107	4.1	2,597	2,489	108	4.2
Logan	11,446	10,958	488	4.3	11,651	11,089	562	4.8
Mesa	76,666	72,309	4,357	5.7	75,875	70,950	4,925	6.5
Mineral	431	410	21	4.9	451	429	22	4.9
Moffat	7,541	7,205	336	4.5	7,781	7,398	383	4.9
Montezuma	13,464	12,761	703	5.2	13,614	12,846	768	5.6
Montrose	22,572	21,422	1,150	5.1	22,983	21,742	1,241	5.4
Morgan	16,867	16,019	848	5.0	16,851	15,900	951	5.6
Otero	8,669	8,143	526	6.1	8,839	8,233	606	6.9
Ouray	2,784	2,655	129	4.6	2,869	2,732	137	4.8
Park	11,479	11,002	477	4.2	11,510	10,998	512	4.4
Phillips	2,561	2,486	75	2.9	2,596	2,515	81	3.1
Pitkin	10,977	10,457	520	4.7	11,196	10,617	579	5.2
Prowers	6,443	6,158	285	4.4	6,564	6,237	327	5.0
Pueblo	78,228	72,024	6,204	7.9	78,216	71,220	6,996	8.9
Rio Blanco	3,042	2,883	159	5.2	3,161	2,992	169	5.3
Rio Grande	5,916	5,553	363	6.1	6,107	5,680	427	7.0
Routt	16,068	15,386	682	4.2	16,380	15,632	748	4.6
Saguache	3,491	3,286	205	5.9	3,525	3,290	235	6.7
San Juan	561	541	20	3.6	591	570	21	3.6
San Miguel	4,782	4,551	231	4.8	4,755	4,502	253	5.3
Sedgwick	1,236	1,191	45	3.6	1,259	1,213	46	3.7
Summit	20,472	19,545	927	4.5	20,547	19,525	1,022	5.0
Teller	13,373	12,697	676	5.1	13,410	12,677	733	5.5
Washington	3,173	3,082	91	2.9	3,238	3,144	94	2.9
Weld	168,180	158,713	9,467	5.6	167,169	156,696	10,473	6.3
Yuma	5,972	5,790	182	3.0	6,043	5,868	175	2.9

All estimates made in cooperation with the U.S. Department of Labor, Bureau of Labor Statistics and adjusted to Current Population Survey data. Estimates have been revised to incorporate population data from the American Community Survey.
 Colorado Department of Labor and Employment 2021

Not Seasonally Adjusted Labor Force

	August 2021				August 2020			
	Labor Force	Employment	Unemployment	Rate	Labor force	Employment	Unemployment	Rate
Colorado	3,195,524	3,024,237	171,287	5.4	3,125,930	2,906,414	219,516	7.0
Metropolitan Statistical Area								
Boulder	196,694	188,027	8,667	4.4	191,671	179,936	11,735	6.1
Colorado Springs	370,445	349,738	20,707	5.6	359,936	336,172	23,764	6.6
Denver-Aurora-Lakewood	1,713,045	1,619,244	93,801	5.5	1,674,266	1,548,051	126,215	7.5
Fort Collins	205,389	195,772	9,617	4.7	203,395	191,563	11,832	5.8
Grand Junction	76,666	72,309	4,357	5.7	76,126	70,978	5,148	6.8
Greeley	168,180	158,713	9,467	5.6	164,852	153,034	11,818	7.2
Pueblo	78,228	72,024	6,204	7.9	76,601	70,749	5,852	7.6
Counties								
Adams	282,091	264,700	17,391	6.2	274,882	252,816	22,066	8.0
Alamosa	8,629	8,183	446	5.2	8,289	7,813	476	5.7
Arapahoe	376,121	354,341	21,780	5.8	368,688	338,901	29,787	8.1
Archuleta	7,846	7,499	347	4.4	7,388	6,903	485	6.6
Baca	2,332	2,275	57	2.4	2,038	1,999	39	1.9
Bent	1,979	1,863	116	5.9	1,738	1,667	71	4.1
Boulder	196,694	188,027	8,667	4.4	191,671	179,936	11,735	6.1
Broomfield	41,274	39,369	1,905	4.6	40,195	37,637	2,558	6.4
Chaffee	10,869	10,447	422	3.9	10,289	9,746	543	5.3
Cheyenne	1,178	1,151	27	2.3	1,035	1,008	27	2.6
Clear Creek	6,256	5,903	353	5.6	6,147	5,642	505	8.2
Conejos	4,203	4,005	198	4.7	3,960	3,779	181	4.6
Costilla	1,824	1,716	108	5.9	1,816	1,672	144	7.9
Crowley	1,603	1,523	80	5.0	1,507	1,442	65	4.3
Custer	2,271	2,166	105	4.6	2,135	2,045	90	4.2
Delta	14,986	14,243	743	5.0	14,300	13,467	833	5.8
Denver	433,385	407,788	25,597	5.9	425,932	389,985	35,947	8.4
Dolores	1,198	1,143	55	4.6	1,137	1,072	65	5.7
Douglas	200,753	192,298	8,455	4.2	194,467	183,868	10,599	5.5
Eagle	33,654	32,059	1,595	4.7	35,523	32,662	2,861	8.1
El Paso	357,072	337,041	20,031	5.6	346,896	323,950	22,946	6.6
Elbert	15,583	14,971	612	3.9	14,822	14,199	623	4.2
Fremont	17,234	16,111	1,123	6.5	15,976	14,924	1,052	6.6
Garfield	32,199	30,709	1,490	4.6	32,126	30,254	1,872	5.8
Gilpin	3,961	3,736	225	5.7	4,032	3,573	459	11.4
Grand	9,012	8,601	411	4.6	9,373	8,753	620	6.6
Gunnison	11,606	11,211	395	3.4	11,523	10,947	576	5.0
Hinsdale	503	487	16	3.2	495	481	14	2.8
Huerfano	2,867	2,642	225	7.8	2,636	2,402	234	8.9
Jackson	1,053	1,026	27	2.6	994	961	33	3.3
Jefferson	342,142	325,136	17,006	5.0	334,018	310,923	23,095	6.9
Kiowa	1,078	1,050	28	2.6	940	920	20	2.1
Kit Carson	4,505	4,376	129	2.9	4,113	4,012	101	2.5
La Plata	31,848	30,305	1,543	4.8	31,531	29,743	1,788	5.7
Lake	4,531	4,306	225	5.0	4,701	4,371	330	7.0
Larimer	205,389	195,772	9,617	4.7	203,395	191,563	11,832	5.8
Las Animas	6,819	6,358	461	6.8	6,511	6,043	468	7.2
Lincoln	2,580	2,473	107	4.1	2,362	2,273	89	3.8
Logan	11,446	10,958	488	4.3	10,793	10,317	476	4.4
Mesa	76,666	72,309	4,357	5.7	76,126	70,978	5,148	6.8
Mineral	431	410	21	4.9	434	413	21	4.8
Moffat	7,541	7,205	336	4.5	7,221	6,844	377	5.2
Montezuma	13,464	12,761	703	5.2	13,028	12,270	758	5.8
Montrose	22,572	21,422	1,150	5.1	21,799	20,584	1,215	5.6
Morgan	16,867	16,019	848	5.0	16,112	15,195	917	5.7
Otero	8,669	8,143	526	6.1	8,106	7,647	459	5.7
Ouray	2,784	2,655	129	4.6	2,670	2,507	163	6.1
Park	11,479	11,002	477	4.2	11,083	10,507	576	5.2
Phillips	2,561	2,486	75	2.9	2,388	2,331	57	2.4
Pitkin	10,977	10,457	520	4.7	11,232	10,325	907	8.1
Prowers	6,443	6,158	285	4.4	6,068	5,811	257	4.2
Pueblo	78,228	72,024	6,204	7.9	76,601	70,749	5,852	7.6
Rio Blanco	3,042	2,883	159	5.2	2,881	2,732	149	5.2
Rio Grande	5,916	5,553	363	6.1	5,434	5,077	357	6.6
Routt	16,068	15,386	682	4.2	16,098	15,016	1,082	6.7
Saguache	3,491	3,286	205	5.9	3,389	3,129	260	7.7
San Juan	561	541	20	3.6	605	577	28	4.6
San Miguel	4,782	4,551	231	4.8	5,447	4,997	450	8.3
Sedgwick	1,236	1,191	45	3.6	1,139	1,105	34	3.0
Summit	20,472	19,545	927	4.5	21,529	19,661	1,868	8.7
Teller	13,373	12,697	676	5.1	13,040	12,222	818	6.3
Washington	3,173	3,082	91	2.9	2,833	2,741	92	3.2
Weld	168,180	158,713	9,467	5.6	164,852	153,034	11,818	7.2
Yuma	5,972	5,790	182	3.0	5,442	5,292	150	2.8

All estimates made in cooperation with the U.S. Department of Labor, Bureau of Labor Statistics and adjusted to Current Population Survey data. Estimates have been revised to incorporate population data from the American Community Survey.
 Colorado Department of Labor and Employment 2021



Colorado LMI Data Overview

August 2021

Employment					
	Aug-21	Jul-21	Aug-20	Change from previous:	
				Period	Year
Nonfarm Wage and Salary Employment (SA)	2,736,600	2,731,000	2,619,200	5,600	117,400
Total Resident Employment (SA)	3,004,200	2,999,500	2,884,100	4,700	120,100
	Q1 2021	Q4 2020	Q1 2020		
UI Covered Total Employment	2,615,044	2,625,077	2,732,544	(10,033)	(117,500)
UI Covered Private Employment	2,200,827	2,203,562	2,301,497	(2,735)	(100,670)

Unemployment					
	Aug-21	Jul-21	Aug-20	Change from previous:	
				Period	Year
Unemployment (SA)	189,000	196,000	221,800	(7,000)	(32,800)
Percent Unemployed (SA)	5.9%	6.1%	7.1%	(0.2)	(1.2)
	Aug-21	Jul-21	Aug-20		
Initial Claims	45,812	48,018	27,133	(2,206)	18,679
Continued Weeks Claimed	231,479	234,382	877,481	(2,903)	(646,002)

Wages and Earnings					
	Q1 2021	Q4 2020	Q1 2020	Change from previous:	
				Period	Year
Total Average Weekly Wage	\$1,337	\$1,376	\$1,283	(\$39)	\$54
Private Average Weekly Wage	\$1,365	\$1,398	\$1,309	(\$33)	\$56
	Aug-21	Jul-21	Aug-20		
Average Weekly Earnings (Construction)	\$1,235.10	\$1,238.97	\$1,167.24	(\$3.87)	\$67.86
Average Weekly Earnings (Manufacturing)	\$1,044.97	\$1,045.41	\$1,066.41	(\$0.44)	(\$21.44)

CO Unemployment Insurance Trust Fund					
	Jul-21	Jun-21	Jul-20	Change from previous:	
				Period	Year
Employer Contributions	\$52,757,667	\$10,335,826	\$39,906,660	\$42,421,841	\$12,851,007
Benefits Paid	\$85,743,976	\$94,862,282	\$315,776,548	(\$9,118,306)	(\$230,032,572)
Average Weekly Benefit Amount	\$370.77	\$382.62	\$351.61	(\$11.85)	\$19.16
Duration (weeks)	21.29	21.25	31.68	0.04	(10.39)
Outstanding Title XII Loan Balance	\$1,014,167,919	\$1,014,167,919	N/A	\$0	N/A

Consumer Price Index for All Urban Consumers					
	Jul-21	May-21	Jul-20	% Change from previous:	
				Period	Year
Not seasonally adjusted					
Denver-Aurora-Lakewood	285.268	280.154	275.589	1.8%	3.5%
US City Average	273.003	269.195	259.101	1.4%	5.4%

(Most current data available for all categories)