

IN 4/100.1/1895-96  
8-7

PROPERTY OF THE LIBRARY  
UNIVERSITY OF COLORADO

COLORADO STATE PUBLICATIONS LIBRARY



3 1799 00119 2830

# NINTH BI-ENNIAL REPORT

—OF THE—

Commissioners and Superintendent

—OF THE—

COLORADO

# INSANE ASYLUM

To the Governor of Colorado,

FOR THE YEARS 1895-1896.

PUEBLO, COLO.

NOV. 30, 1896.

*Chieftain, Printers and Binders, Pueblo.*

## Date Due

1	2	3	4
5	6	7	8
9	10	11	12
13	14	15	16
17	18	19	20
21	22	23	24
25	26	27	28
29	30	31	32
33	34	35	36
37	38	39	40
41	42	43	44
45	46	47	48
49	50	51	52
53	54	55	56
57	58	59	60
61	62	63	64
65	66	67	68
69	70	71	72
73	74	75	76
77	78	79	80
81	82	83	84
85	86	87	88
89	90	91	92
93	94	95	96
97	98	99	100

Demco 293-5

NINTH BI-ENNIAL REPORT

—OF THE—

Commissioners and Superintendent

—OF THE—

COLORADO

INSANE ASYLUM

To the Governor of Colorado.

FOR THE YEARS 1895-1896.

---

PUEBLO, COLO.

NOV. 30, 1896.

---

*Cheftain, Printers and Binders.*

## OFFICERS.

---

### BOARD OF COMMISSIONERS.

DR. J. T. ESKRIDGE, PRESIDENT.

L. W. WALKER, SECRETARY.

JOSE B. ROMERO.

---

SUPERINTENDENT, P. R. THOMBS.

SUPERVISOR, T. J. BURROWS.

STEWARD, L. B. FURMAN.

## COMMISSIONERS' REPORT.

---

*To the Hon. Albert W. McIntire, Governor of the State of Colorado:*

Dear Sir: In the further discharge of our official duties as Commissioners of the Insane Asylum, we beg to submit for your consideration the Ninth Bi-ennial Report of the Colorado State Insane Asylum, the same being for the period beginning December 1, 1894, and ending November 30, 1896. Following our report will be found the reports of the Superintendent, of the Steward and of the Matron, which give in detail the workings of the asylum for the years 1895 and 1896, the statement of expenses and disbursements for its maintainance and improvement, together with the pressing needs of the asylum for the ensuing two years.

We take great pleasure in reporting that we have invariably found everything connected with the institution and grounds, including the farm, in a neat and orderly condition. The halls dining rooms, wards, bed rooms, kitchen and sun rooms are a model of neatness and cleanliness. We have been especially pleased with the attractive state of the grounds within the asylum enclosure, and with the efforts constantly made to keep these in the best possible condition.

The clothing of the patients, with the exception of a few of the most violent, have been clean, and the patients generally have presented a tidy appearance, for persons suffering as they are.

The acute ailments, including the acute forms of insanity and the various bodily disturbances to which the insane are subject, have been looked after to the best of the superintendent's ability, but it is impossible for one man to superintend the workings of a large asylum and systematically attend daily to the numerous wants of 422 patients.

**Economical management:** While in the abstract we believe it is cruel to be too economical in caring for the insane, yet practically it has been necessary for rigid economy to be maintained by the superintendent. In the report of about forty different insane asylums which we have carefully examined, in none has the per diem cost per capita been found as low as it is in this asylum. Some of the state hospitals for the insane have expended about twice as much each day per patient as has Dr. Thombs. The low cost in Colorado's asylum has not been obtained by giving the patients poor food, but it has been made possible by increasing the farm products, by having the patients, who are able, work, and by getting along with too few attendants. While we commend this economy during the depressed times, yet we hope the time will soon come when more money may be expended for the comfort and treatment of the insane.

**Deficit:** Notwithstanding that the expenses for the maintainance of the asylum have been so small in comparison with those of other asylums, we regret to report that we have insufficient funds to pay our indebtedness. With 56 more patients than the last bi-cennial report showed, we have had \$13,696 less revenue than was received from the

fifth of a mill tax and from the special appropriation by the legislature. Besides the \$10,000 that was appropriated for 1894 was anticipated and expended in the maintainance of the asylum, but the Auditor of State, during Governor Waite's administration, refused to draw any warrants on this fund, and in consequence the asylum lost it. The deficit is now \$32,818.52, which is accounted for as follows:

Lessened revenue for 1895-6.....	\$13,696.00
Indebtedness from 1894.....	10,000.00
Increased expenses for maintain- ance of the asylum for 1895 and 1896 over 1893 and 1894.....	9,122.52

Indebtedness of the asylum Nov. 30, 1896.....	\$32,818.52
--	-------------

### IMPROVEMENTS.

We desire to call your excellency's attention to the following improvements:

1. A more systematic method of keeping the accounts of the asylum in accordance with the Hon. Mr. Lowell's suggestions, which received your excellency's approval, has been adopted.

2. Completion of the new cottage for males.

3. Regular lectures are given to attendants who will be required to pass a final examination in their studies and in their practical work. No attendants will be retained who do not show satisfactory improvement. All new attendants who are engaged must be trained before entering the asylum, and if not graduates of some training school for nurses, must submit to an examination.

4. A staff of attending physicians have vol-

unteered their services to visit the asylum at regular times and attend gratis any cases assigned them by the superintendent in their special departments. The following physicians, of Pueblo, have been appointed on the attending staff:

R. W. Corwin, Hubert Work, A. T. King, Rilla G. Hay, E. M. Marbourg, W. W. Bulette.

Drs. E. J. A. Rogers and Clayton Parkhill, of Denver, have accepted the positions of consulting surgeons.

### WANTS OF THE ASYLUM.

**ATTENDANTS.** There are only eleven attendants in the asylum to take care of 422 patients. This number might be doubled with great advantage to the inmates. It is almost impossible for an attendant to leave his ward during the day for any length of time as only one is assigned to a ward. It is imprudent under the present limited number of attendants to allow the agitated patients an opportunity for a walk in the open air. We should have, at least, five extra attendants.

**A NEW COTTAGE FOR FEMALES.** The different County Judges report fifty insane female patients throughout the State. None of these can be admitted until vacancies occur by recovery or death of some of the present inmates. During the next two years, judging for the increase of the past two, the number of insane women in the state unable to gain admission into the asylum will be 100, or thereabout, unless additional room is provided for these unfortunates. We desire to call your excellency's attention to the necessity of erecting a



cottage that will accommodate about 100 women.

**RESIDENT PHYSICIANS.** It is impossible for the superintendent to attend to the administrative work of the asylum and give sufficient attention to 422 sick people. We recommend that at least three resident physicians, two male and one female, be employed to assist in the treatment of the insane.

**VENTILATION.** The "old male building" is poorly ventilated. This defect might be remedied by exhaust fans.

**HOSPITAL.** At present there are no fit accommodations for the treatment of very acute bodily ailments, such as pneumonia, fevers, and patients who have been subjected to surgical operations. We are in accord with the superintendent in recommending building a hospital with capacity for 15 beds, and with an operating room attached.

**INSURANCE.** Until two years ago the asylum buildings have been insured for \$165,000. A policy for \$165,000 running five years, costs \$5,000. This sum was asked for at the last session of the legislature, but no appropriation for this purpose was made. In consequence, if the buildings were to burn they would be a total loss to the state. We urge the necessity of \$5,000 for the purpose of insurance.

#### APPROPRIATIONS ABSOLUTELY NEEDED.

Amount of deficiency, Nov. 30, 1896. . . . .	\$32,818.52
Estimated cost of cottage for 100 females. . . . .	50,000.00
Special appropriation to meet the deficiency in the maintainance fund for	

the ensuing two years, \$15,000 each	
year .....	30,000.00
For the purpose of insuring the asylum	
buildings, etc.....	5,000.00
	<hr/>
Total.. .....	\$117,818.52

### MONEY REQUIRED TO MAKE IMPROVEMENTS THAT MAY BE DEFERRED.

Five additional attendants for two years..\$	3,600.00
Hospital with sleeping apartments for resident physicians.....	15,000.00
Ventilating apparatus for "old building".	1,500.00
	<hr/>
Total... ..	\$20,100.00

In conclusion we desire to express our appreciation of the superintendent's ability as an executive officer. He has acted in harmony with the commissioners in the adoption of every measure proposed for the improvement of the welfare of the inmates of the asylum. The matron is efficient and untiring in the discharge of her duties. The steward and supervisor co-operate with the other officials, and with the attendants of the asylum in an economic administration and in maintaining discipline.

All of which is respectfully submitted.

J. T. ESKRIDGE, President.

L. W. WALKER, Secretary.

J. B. ROMERO.

## SUPERINTENDENT'S REPORT.

---

*To the Board of Commissioners of the Colorado State Insane Asylum.*

GENTLEMEN: In compliance with the requirements of the law, and your regulations, I beg to present for your consideration the NINTH BIENNIAL REPORT of the operations and conditions of this institution, from November 30, 1894, to November 30, 1896, together with the estimated wants for the ensuing two years.

The following abstract from the statistical tables embodied in the Report is inserted for your convenience.

There were remaining in Asylum at date of last Report 231 males and 135 females, total 366.

There were admitted during the past two years 237 males and 42 females, total 279.

There were treated in the Asylum during the past two years 468 males and 177 females, total 645.

There were discharged during the two years, including deaths and elopements, 184 males and 39 females, total 223.

There were discharged recovered, during the two years, 74 males and 16 females, total 90.

There were discharged improved, during the two years, 22 males and 9 females, total 31.

There died during the two years 78 males and 13 females, total 91.

There eloped during the two years 10 males and

1 female, leaving in the asylum at this date 284 males and 138 females, total 422.

This total you will observe is 56 in excess of the number remaining at the end of our last Bi-ennial Report. Of those remaining it is estimated that 40 are curable, 35 males and 5 females; and that 249 males and 133 females are incurable.

It may be stated that quite a large number of those designated as incurable have greatly improved during their residence in the asylum, but for various reasons are not in a condition to be discharged.

The daily average number under care and treatment for the period was 386.

The percentage of recoveries on the number of those admitted during the bi-ennial period has been 32. These results compare favorably with those of other institutions for the insane that have been in operation as long as this. It is a fact that the older institutions of this kind show a smaller recovery and a larger death rate than those which have been in operation for shorter periods, since a great proportion of the insane never recover the use of their reason, and as mental derangement does not necessarily seriously impair the physical health, a large number live for years and become permanent inmates of the asylum.

Many cases of chronic dementia, epileptics, idiots and imbeciles are brought here; this class increases our incurable list, and occupies room that otherwise might be reserved for those more amenable to treatment.

The death rate has been larger than usual, due to the reception of an unusually large number of

paralytics and epileptics in the last stages of the disease; also the number of those who died in the first month of their arrival is comparatively large, due to the fact that they arrive in such an exhausted condition that they never rally in spite of all efforts to prolong life. A large number of deaths occurred in old age—in nineteen cases the ages were over 65 years. One death occurred from accident; W. B. an incurable epileptic, succeeded in undoing the fastenings to a window, unnoticed by his attendant, and either in the excitement of his attempt to escape, or from an epileptic seizure, fell to the ground, sustaining concussion of the brain, from which he never rallied.

The per diem cost, per capita, for 1895, inclusive of improvements and repairs, was 43.6 cents. Exclusive of improvements and repairs was 40 cents.

The per diem cost, per capita, for 1896, inclusive of improvements and repairs, was 38.8 cents. Exclusive of improvements and repairs was 36.5 cents.

The difference in the per diem cost in the two years is accounted for as follows: In 1895, our growing crops were nearly destroyed by floods while in 1896 we have been more fortunate and have raised an abundance of vegetables of all kinds.

Employment has been given to those patients who were willing and able to work; the number employed has been large considering the means at our command. The labor has been utilized to some extent in every department of the institution. The farm and garden have furnished abundant employment for all who were adapted to that kind of

labor. Many have assisted in the ordinary improvements and repairs, such as painting, plastering, kalsomining and repairing such other damages as are daily done in every asylum for the insane. The laundry and sewing room have afforded occupation to many who became tired of the monotony of the wards. In giving employment to our patients, we endeavor to select that which is best suited to their habits, tastes, mental and bodily condition.

The improvements during the two years have been quite extensive; among the most important has been that of sinking a well at a convenient point, for an additional water supply, and the removal of our pumping station from the river bank to the new point of supply. The saving in distance, and the improvement in the quality of water has amply repaid the labor and expense incurred.

A new and excellent bakery has been constructed, which has proven a great help in the work of the culinary department.

The erection of a root house, of sufficient capacity to contain all the roots and vegetables raised, has enabled us to dispense with the old method of burying our winter's supply in pits.

Every hall, dining room, bath room, and patient's room in each ward has been kalsomined in both the male and female departments throughout, the work being done by patients, under the direction of the supervisor. The improvement in the appearance of our halls, as well as the direct beneficial effect upon the sanitation of the wards, cannot be overestimated.

One thousand feet of 2 1-2 inch hose have been

added to the fire plugs inside and outside the buildings.

The floors in the upper wards of the male department having become much worn, have been taken up and replaced by new, and the wards repainted.

Many of the mattresses in the wards having been corroded and broken by the uncleanly and excited patients, have been repaired with new wire purchased for the purpose.

Fruit and shade trees have been added where required.

A large amount of grading and filling has been done around the new cottage. The fences and ditches have been kept in good repair, and the usual care and attention has been paid to lawns and to the walks and drives.

### NEW COTTAGE BUILDING.

The new cottage building for males, which could not be completed in 1894 for want of funds, was completed and occupied in September, 1895. The opening of these wards has made it practicable to receive all male cases for which application has been made during the past year.

### TRAINING SCHOOL FOR ATTENDANTS.

The success of training schools for attendants in connection with other institutes has decided the Commissioners to organize a system of instruction to attendants in connection with this asylum, hoping and expecting by this means that much may be accomplished in maintaining improved nursing. I



am satisfied that much more can be accomplished in this direction when the resident staff of medical officers has been made commensurate with the number of patients under care. In this connection I deem it proper to advise that at least two assistant physicians be added to the resident medical staff of the institution.

### ATTENDANTS.

There is scarcely any one thing on which the comfort and welfare of patients more depends than the fitness for their duties of those in whose immediate charge they are placed. The work of caring for the insane is difficult, trying, and often dangerous. To perform the duties of an attendant upon the insane properly, requires a rare combination of mind and disposition—patience in enduring abuse and violence, tact in dealing with most unreasonable people, and incessant vigilance against danger, with promptness and courage to meet it when it comes. When persons qualified by character and experience for these duties are secured, it is very desirable that their services should be retained. We have been fortunate in securing good attendants, but have been at a great disadvantage in the small proportion of attendants to patients; only one attendant has been allowed to each ward, which, when filled, contains thirty-six patients. It is quite evident that under such circumstances, even when everything goes smoothly, the care is insufficient. I earnestly recommend that means be secured whereby our corps of attendants may be at least doubled.



## RECOMMENDATIONS.

VENTILATION. In the old buildings of the male department the ventilation is more or less defective, owing to the fact that suitable provision has not been made for changing the atmosphere with sufficient rapidity to maintain its purity. To secure this end a system of exhaust fans run by motors should be established in each attic. The exact cost of this work has not been ascertained, but it is believed that all the apparatus needed could be obtained, erected and completed, for the sum of \$1,500.

## THE FEMALE DEPARTMENT.

By an act of the Legislature passed in 1891, an appropriation was made wherewith to complete an addition for the exclusive use of female patients, and such addition was completed in the fall of that year. This addition, however, owing to the unexpected number of cases, was speedily filled, and has been crowded ever since, so much so that I regret to report that I have been compelled from lack of facilities, to refuse admission to a large number of unfortunate women. I have received a communication from the various county judges of the State, from which it appears that there are now no less than fifty insane females for whom accommodations and treatment are asked, but I am helpless in the matter, no appropriation having been made for this department since the one referred to. I earnestly urge action looking to the securing of funds for the purpose of building annexes or cottages for women, of an aggregate capacity to afford accommodations for at least one hundred women, as the

present necessities practically require such addition, to say nothing of anticipated new cases. I therefore hope an appropriation in a sufficient amount may be secured, as it ought not to be said that in a State like ours, the class of patients which it is designed to provide for in the proposed structure, should reach any such proportions as now uncared for. Indeed, the public, aside from the duty owing to the unfortunates themselves, is entitled to an institution ample to care for every such case that may arise.

### INDEBTEDNESS

I beg leave to say a few words touching the indebtedness of the institution.

The State Auditor informs me, under date of November 24, that the vouchers on file, including last quarterly pay rolls, amount to \$32,818.52.

This indebtedness is attributed to three causes:

First with the number of patients on hand prior to 1894, the usual appropriation of \$10,000 per annum was barely sufficient to provide for the wants as they then existed; and for the year 1894, though the asylum was entitled out of the appropriations for that year of \$10,000, by some process which I am unable to explain, it was deprived of it. This was during Mr. Waite's administration, and the then State Auditor, for some reason, steadily refused to issue any warrants to cover vouchers for that period, and though I struggled to have the shortage made up from the deficiency bill passed in 1895, I was not able to accomplish anything.

Second, the appropriation for maintainance for 1895 was only \$6,000 and for 1896 it was only \$8,000.

These sums were not only entirely inadequate, but in the aggregate were \$6,000 less than had been appropriated for the preceeding years, notwithstanding the growth of the institution.

Third, increase of patients, as will be seen elsewhere herein, necessitated occasioning increased expense.

And indeed, a fourth cause might be alleged, as owing to diminished taxation, a loss occurred from that source.

This indebtedness is justly due, and I earnestly urge that steps be taken to secure an appropriation to liquidate it; and I further hope that the appropriation for maintainance in the future may not be less than \$15,000 per annum.

It requires little argument to show that it is really more expensive to purchase necessities and supplies on the strength of a doubtful appropriation to be made in the future, than it would be were a fair appropriation made in the first instance.

### INSURANCE.

All insurance policies expired on December 1st, 1894, since which time there has been no insurance on any of our buildings. I would recommend that insurance be carried upon the buildings, and that such amount as you deem advisable be asked for the purpose.

### HOSPITAL.

A hospital entirely separate from the main buildings is necessary, where the sick and helpless can receive the care demanded by their condition. We not only need the room occupied by the sick but

from every view it is the duty of the State to care for the sick in a separate building. The building should be modern and fully provided with appliances, either for medical or surgical work. It should have a separate kitchen so that a dietary for the sick could be prepared in accordance with the needs of the patient.

### FARM AND GARDEN.

The year 1895 was unfavorable for crops here; the damage from floods was unusually severe and greatly decreased our usual supply of farm products. Throughout the year 1896 conditions have been more favorable and we have had an abundance of fresh vegetables for all connected with the institution.

### CONSULTING STAFF.

I desire to acknowledge my indebtedness to the several physicians who have so freely given so much valuable time to the institution and to thank them for valuable professional services gratuitously rendered, as well as the benefit of their advice on cases coming under their respective specialties.

---

In conclusion I desire to express my feelings of gratitude to you gentlemen of the board for the confidence and appreciation which you have reposed in me and for the wise counsel by which you have aided me in the discharge of my duties.

Respectfully Submitted,

P. R. THOMBS,

Superintendent.

# GENERAL STATISTICS.

1895-1896.

TABLE NO. 1.

	Men	Women	Total
Patients in Asylum at date of last Report....	231	135	366
Admitted during the term.....	237	42	279
Whole number treated d'ring t'rm	468	177	645
Discharged during the term as follows:			
Recovered..	74	16	90
Improved....	22	9	31
Deaths....	78	13	91
Eloped....	10	1	11
	184	39	223
Patients remaining....	284	138	422

TABLE NO. 2.

Prospect of those remaining.

	Men	Women	Total
Cureable....	35	5	40
Incureable.....	249	133	382
	284	138	422

TABLE NO. 3.

Showing assigned causes of insanity in persons admitted during bi-ennial period.

	Men	Women	Total
Age and ill health.....	3	1	4
Apoplexy.....	2		2
Chorea.....	2		2
Cerebral Embolus.....	3		3
Cerebral Congestion.....	4		4
Christian Science.....		1	1
Cerebro Spinal Sclerosis.....	1		1
Domestic Trouble.....	3	2	5
Disappointment.....	2	1	3
Disease of the lungs.....	1	1	2
Dyspepsia.....	4		4
Disease of the Kidneys.....	2	1	3
Disease of Liver.....	2		2
Epilepsy.....	10	2	12
Erysipelas.....	2	2	4
Exposure.....	6		6
Fright.....	1	1	2
Fever and exposure.....	3		3
Grief.....	1	1	2
Hereditary.....	36	7	43
Heart disease.....	2		2
Intemperence.....	28	1	29
Injury to head.....	5		5
Injury to head and spine.....	1		1
Ill health.....	15	2	17
Ill health and exposure.....	3		3
Imprisonment.....	3		3
Jealousy.....		1	1
Lead poisoning.....	2		2
Loss of arm and injury.....	1		1
Masturbation.....	9		9
Meningitis.....	1		1
Menstral irregularity.....		3	3
Menopause.....		4	4
Opium habit.....	4		4
Overan disease.....		1	1
Poverty.....	2	1	3

TABLE NO. 3—CONTINUED.

[illegible]

TABLE NO. 4.

Showing cause of death of those who died during  
bi-ennial period.

	Men	Women	Total
Bright disease.....	3	1	4
Consumption....	1	1	2
Cerebral apoplexy .....	3		3
Concussion of brain.....	1		1
Diabetis.....	2		2
Disease of heart, valvular.....	3		3
Epilepsy....	10	2	12
Exhaustion of Acute Mania.....	5	2	7
Exhaustion of Chronic Mania.....	9	1	10
Exhaustion of Acute Melencholia..	3		3
Exhaustion of Chronic Melencholia.	3		3
Exhaustion of Chronic Dementia...	6		6
Fever, Typhoid.....	2		2
General Poresis .....	12	4	16
Organic disease of brain.....	2	1	3
Paralysis .....	5		5
Pneumonia....	1		1
Senile decay.....	7	1	8
	78	13	91

TABLE NO. 5.

Showing the form of mental disorder in cases admitted during the bi-ennial period.

	Men	Women	Total
Mania, acute.....	38	9	47
Mania, sub-acute .....	50	7	57
Mania, recurrent... ..	14	3	17
Mania, chronic.. ..	44	9	53
Melancholia, acute .....	12	2	14
Melancholia, sub-acute .....	16	3	19
Melancholia, chronic .....	8	1	9
Epilepsy .....	14	2	16
General paralysis .....	12	2	14
Dementia, acute .....	5	2	7
Dementia, chronic .....	14	1	15
Typho mania .....	4		4
Idiocy .....	6	1	7
	237	42	239

TABLE NO. 6.

Showing occupation of persons admitted during the bi-ennial period.

	Men	Women	Total
Actors .....	1		1
Agents .....	2		2
Butchers .....	2		2
Blacksmiths .....	5		5
Barbers....	2		2
Broommakers .....	1		1
Cabinetmakers .....	2		2
Carpenters .....	2		2
Clerks .....	5		5
Cooks .....	3		3
Clergymen .....	2		2
Cutler....	1		1
Dairymen .....	1		1
Domestics .....		8	8



TABLE NO. 6—CONTINUED.

	Men	Women	Total
Dressmakers .....		1	1
Druggists .....	1		1
Engineers .....	5		5
Farmers.....	50		50
Gamblers.. .....	1		1
Housekeepers .....		26	26
Hackdrivers .....	1		1
Harnessmakers .....	1		1
Laborers.. .....	68		68
Laundrymen .....	2		2
Merchants .....	4		4
Millers .....	1		1
Miners.....	28		28
Newspapermen .....	1		1
Painters... .....	1		1
Plumbers .....	1		1
Physicians.....	3		3
Photographers .....	2		2
Stockmen .....	10		10
Stonecutters .....	2		2
Shoemakers.....	1		1
Seamstresses .....		2	2
Servants .....		2	2
Salesmen .....	2		2
Teachers... .....	1	1	2
Tailors .....	2		2
R. R. Officials .....	1		1
Waiters .....	1		1
No occupation .....	8	2	10
	237	42	279

TABLE NO. 7.

Showing the nativity of patients admitted during  
the bi-ennial period.

	Men	Women	Total
Arkansas .....	1	1	2
California .....	1		1
Colorado .....	12	1	13
Connecticut .....	2		2
Georgia .....	1	1	2
Indiana.....	2	1	3
Iowa .....	13		13
Illinois .....	8	1	9
Kansas .....	3		3
Kentucky.. .....	6	1	7
Louisiana .....	1		1
Massachusetts.....	2		2
Michigan .....	3	1	4
Minnesota.. .....	1	2	3
Maine .....	2	1	3
Missouri .....	12	3	15
North Carolina .....	2	1	3
South Carolina.....	1		1
New Mexico .....	4	3	7
New York .....	32	2	34
Ohio .....	6	2	8
Pennsylvania .....	15	2	17
Tennessee .....	2	1	3
Texas .....		1	1
Utah.....	1		1
Vermont .....	3		3
Virginia .....	7		7
Wisconsin.. .....	2	1	3
West Virginia .....	2		2
Austria .....	2		2
China .....	2		2
Canada .....	7	2	9
Denmark.....	2		2
England .....	10	2	12
France... .....	2	1	3
Germany... .....	20	5	25

TABLE NO. 7—CONTINUED.

	Men	Women	Total
Ireland .....	18	3	21
Italy .....	7	1	8
Norway .....	3		3
Scotland.. .....	2		2
Sweeden .....	12	2	14
Switzerland .....	2		2
Wales .....	1		1
	237	42	279

TABLE NO. 8.

Showing residence by counties of cases admitted  
during the bi-ennial period.

	Men	Women	Total
Arapahoe .....	65	16	81
Bent .....	2		2
Boulder .....	15	2	17
Chaffee.....	3		3
Clear Creek.. .....	3	1	4
Conejos .....	1	1	2
Costilla .....	1		1
Custer .....	1		1
Delta.....	2		2
Dolores .....	2		2
Douglas....	2		2
Eagle .....	1		1
Elbert .....	4		4
El Paso .....	12	3	15
Fremont. ....	8	2	10
Garfield.. .....	6	1	7
Gilpin... .....	8		8
Gunnison .....	3	1	4
Huerfano.....	5	1	6
Jefferson.. .....	2		2
Kit Carson .....	2		2
Lake .....	7		7
La Plata .....	3		3

TABLE NO. 8—CONTINUED.

	Men	Women	Total
Larimer .....	6	1	7
Las Animas.....	10	2	12
Logan .....	4		4
Mesa.....	7		7
Montrose .....	2		2
Morgan .....	2		2
Otero.....	3	1	4
Ouray.....	3		3
Pitkin .....	7	3	10
Pueblo.....	15	4	19
Rio Grande.....	4		4
Routt .....	1	1	2
San Juan .....	1		1
San Miguel.....	3	1	4
Summit .....	1		1
Weld.....	4		4
Yuma .....	1		1
Penitentiary.....	6		6
	237	42	239

TABLE NO. 9.

Showing residence of patients now in Asylum.

	Men	Women	Total
Arapahoe .....	76	59	135
Archuleta .....		1	1
Bent .....	2		2
Boulder.....	19	6	25
Chaffee.....	7	2	9
Clear Creek.....	4	2	6
Conejos.....		1	1
Costilla .....	4		4
Custer.....	1	1	2
Delta..	1		1
Dolores .....	3		3
Elbert .....	3		3
El Paso .....	6	9	15
Fremont .....	8	4	12

TABLE NO 9.—CONTINUED.

	Men	Women	Total
Garfield.....	9	2	11
Gilpin .....	9	2	11
Gunnison .....	2	1	3
Hinsdale....	4		4
Huerfano.....	7		7
Jefferson .....	2		2
Kiowa.....		1	1
Lake .....	17	6	23
La Plata .....	4	2	6
Larimer .....	4	3	7
Las Animas....	9	7	16
Lincoln .....	2		2
Logan....	1		1
Mesa .....	7		7
Montezuma.....	1		1
Montrose .....	4	1	5
Morgan.....	2		2
Otero .....	2		2
Ouray.....	3		3
Park .....	1	2	3
Pitkin .....	6	2	8
Pueblo....	28	16	44
Rio Blanco .....	1		1
Rio Grande.....	4		4
Routt.....	1	1	2
Saguache .....	5	2	7
San Miguel .....	4		4
Sedgwick.....		2	2
Weld .....	2	3	5
Yuma.....	2		2
State Penitentiary.....	7		7
	284	138	422

TABLE NO. 10.

Showing the ages at the time of admission of cases  
during the bi-ennial period.

	Men	Women	Total
Less than fifteen.....		1	1
From fifteen to twenty.....	6	2	8
“ twenty to twenty-five.....	23	3	26
“ twenty-five to thirty.....	26	1	27
“ thirty to thirty-five.....	42	7	49
“ thirty-five to forty .....	42	13	55
“ forty to forty-five.....	25	9	34
“ forty-five to fifty.....	21	1	22
“ fifty to sixty.....	24	1	25
“ sixty to seventy.....	22	3	25
“ seventy to eighty.....	6	1	7
	237	42	279

TABLE NO. 11.

Showing the civil condition of persons admitted  
during the bi-ennial period.

	Men	Women	Total
Married....	93	23	148
Single .....	136	12	148
Widows.....		7	7
Widowed .....	8		8
	237	42	279

## ARTICLES MADE IN SEWING ROOM.

1895-1896.

Aprons..	1756
Bed Spreads.....	302
Bed Ticks.....	319
Bibs..	37
Chemise.....	107
Chemisole.....	36

Comfortables . . . . .	97
Cushions . . . . .	15
Dresses . . . . .	516
Drawers . . . . .	138
Dress Waists . . . . .	36
Hose, knitted . . . . .	173
Napkins . . . . .	136
Night Dresses . . . . .	57
Night Caps . . . . .	11
Pillows . . . . .	117
Pillow Ticks . . . . .	286
Pillow Cases . . . . .	1656
Quilts pieced . . . . .	78
Rugs . . . . .	27
Strong Dresses . . . . .	9
Sheets . . . . .	1754
Skirts . . . . .	838
Towels, roller . . . . .	656
Towels, Dish . . . . .	708
Towels, hand . . . . .	111
Towels, bath . . . . .	528
Table Cloths . . . . .	119

---

## PRODUCTS OF FARM AND GARDEN

1895.

	Lbs.
Beans . . . . .	4,000
Onions . . . . .	22,000
Cabbage . . . . .	50,000
Cauliflower . . . . .	10,000
Spinach . . . . .	8,100
Carrots . . . . .	10,000
Tomatoes . . . . .	10,000
Turnips . . . . .	12,000
Beets . . . . .	22,000
Oyster plant . . . . .	4,000
Parsnips . . . . .	18,000
Squash . . . . .	24,000
Horse Radish . . . . .	400
Pop Corn . . . . .	800

Corn fodder.. . . . .	50,000
Peas..... . . . .	5,000
	Doz.
Lettuce . . . . .	1,500
Radishes . . . . .	1,000
Asparagus . . . . .	1,200
Rhubarb . . . . .	800
Bunch onions..... . . . .	6,000
Celery . . . . .	3,000
Corn.... . . . .	8,000
Cucumbers . . . . .	10,000
Cantalopes.. . . . .	6,000
Mangos.... . . . .	500
	Bbls.
Cucumber pickles.... . . . .	10
Sauer Kraut..... . . . .	8

---

### DAIRY PRODUCTS.

For Year 1895.

Milk, gallons..... . . . .	13,200
----------------------------	--------

#### STOCK ON HAND.

Cows..... . . . .	12
Heiffers . . . . .	4
Bulls... . . . .	2
Hogs . . . . .	22
	Lbs.
Pork Produced.. . . . .	8,644
Veal produced..... . . . .	1,480
Eggs from henery, dozen.... . . . .	800
Chickens raised.. . . . .	200
Chickens on hand.... . . . .	280
Turkeys . . . . .	75
Horses on hand.. . . . .	2
Mules.... . . . .	2



## PRODUCTS OF FARM AND GARDEN.

1896.

	Lbs.
Onions .....	21,000
Cabbage .....	51,000
Cauliflower .....	11,000
Spinach .....	8,000
Carrots .....	11,000
Tomatoes .....	10,100
Turnips .....	13,000
Beets .....	23,000
Oyster plant .....	4,000
Parsnips.....	18,000
Squash .....	20,000
Beans .....	5,000
Peas .....	5,100
Horse Radish..	400
Pop Corn.....	700
	Doz.
Lettuce .....	1,500
Radishes .....	1,500
Asparagus .....	1,300
Rhubarb .....	900
Bunch Onions .....	1,200
Celery .....	3,000
Corn .....	8,500
Cucumbers.....	12,000
	Bbls.
Cucumber pickles .....	10
Sauer Kraut .....	8
Water Melons .....	880
Cantaloupes..	2,500
Corn fodder, pounds .....	60,000

## PRODUCTS OF DAIRY.

Year 1896.

Milk, gallons.....	14,000
Cows on hand.....	14
Bulls on hand.....	1

Heiffers on hand . . . . .	4
Hogs on hand . . . . .	42
Hogs raised . . . . .	50
Eggs produced, dozen . . . . .	400
Chickens raised . . . . .	175
Turkeys raised . . . . .	50
Horses on hand . . . . .	2
Mules on hand . . . . .	2
	Lbs.
Beef killed . . . . .	2,325
Veal killed . . . . .	500
Pork killed . . . . .	4,000

# FINANCIAL STATISTICS.

---

## INSANE ASYLUM FUND.

1895.

Sundries to Sundries.

Table.....	\$20,073	62
Clothing .....	4,143	10
Bedding .....	1,332	16
Improvements and Repairs ..	4,676	52
Stable, Farm and Garden....	2,484	88
Kitchen and Laundry.....	1,669	56
Medical Supplies.....	875	95
Contingent .....	668	30
Furniture and Fixtures.....	291	50
Fuel....	3,120	50
Light.....	1,934	45
Water .....	862	50
Telephone.....	80	00
Mechanical Restraint .....	341	00
Wages .....	10,576	55
Salaries.....	6,500	00

Paying Patients .....	\$	120	00
Auditor of State.....		59,510	59

---

\$59,630	59	\$59,630	59
----------	----	----------	----

---

## INSANE ASYLUM FUND.

1896.

## Sundries to Sundries.

Table.....	\$18,695	42
Clothing .....	3,905	22
Bedding.....	1,029	45
Improvements and Repairs..	3,419	15
Stable, Farm and Garden..	1,720	31
Kitchen and Laundry.....	2,230	86
Medical Supplies....	1,177	16
Contingent....	687	60
Furniture and Fixtures..	372	90
Fuel.....	2,962	99
Light.....	1,650	50
Water....	1,122	65
Telephone....	100	00
Stock, Imp. and Produce..	62	50
Wages....	11,349	31
Salaries.....	6,575	00
W. E. Doyle & Co.....	\$ 1,293	84
Trustees Pueblo Water Works....	1,050	00
Rock Mountain Nurseries .....	23	50
Pueblo Carriage Co.....	20	20
W. Pueblo Ditch & Res. Co.....	72	65
Colo. Telephone Co..	100	00
Pueblo Gas & E. C. Co.....	1,625	60
F. P. Lannon....	103	61
G. L. L. Gann Mctl Co.....	3,428	32
Nuckolls Packing Co.....	1,413	09
Crews-Beggs D. G. Co.....	1,231	73
Union C., G. & S. Co.....	3,185	68
F. B. Reigart.....	51	35
Andrews Packing Co....	3,319	76
Sharp & Babbitt.....	289	85
N. Morris & Son.....	918	58
Robbins Crystal Hall....	206	50
Holmes Hardware Co.....	849	16
Spratlen & Anderson.....	12,873	52
Wall Stationery Co.....	174	45
Hughes Bros.....	539	60

Chieftain Pub. Co.....	80 00
Boob-Francis Hdw. Co.....	732 15
C. F. & I. Co.....	658 39
C. C. C. Co.....	2,294 10
L. Florman.....	272 32
A. A. Hupp.....	121 50
Frank Pryor.....	189 70
S. C. Gallup & Frazier....	89 65
Newton Lumber Co.....	340 00
T. J. Morgan & Co.....	70 25
Colo. School, Deaf and Blind..	110 50
Pueblo Wire and Iron Works....	15 00
Pueblo Hardware Co.....	145 18
A. T. & S. F. R. R. Co.....	104 36
W. Trarder.....	4 75
J. T. Manners.....	270 00
Iron City Mfg. Co.....	91 73
Aurora Mfg. Co.....	35 00
T. R. Zeiger.....	230 10
John Arthur.....	8 00
Ford Opt. & Surg. Inst. Co.....	34 85
Pueblo Street Ry. Co.....	40 00
N. W. Hawes.....	61 88
Della Jacobs.....	6 50
J. M. Gray.....	33 00
J. K. Thompson.....	15 00
Floral Park G. H.....	26 95
Crystal Ice Co.....	91 52
Robt. Stetson.....	4 50
N. Kearny.....	51 52
State Boiler Insp.....	20 00
Moses & Allen.....	5 59
H. M. Morse.....	112 00
Sundry Employes.....	11,349 31
Sundry Officers.....	6,575 00

---

\$57,061 02    \$57,061 02

---

## COTTAGE BUILDING FUND.

1895 and 1896.

Architecture.....	\$	319	15	
Carpentering.....		3,569	00	
Plumbing .....		2,235	00	
Painting .....		507	00	
Plastering .....		1,156	90	
Window Guards and Locks...		342	00	\$8,129 05

---

## FUND TO FURNISH COTTAGE BUILDING.

1895 and 1896.

Pueblo Hardware Co.....	\$	360	00	
Colo. School, Deaf & Blind....		187	50	
T. J. Morgan & Co.....		245	00	
Frank Pryor.....		1,207	47	\$1,999 97

---

## FUND TO REPLACE WORN-OUT FURNITURE.

1895 and 1896.

Holmes Hardware Co....	\$	640	00	
Frank Pryor....		360	00	\$1,000 00

---

## BOILER AND BOILER HOUSE FUND.

1895.

T. J. Manners....	\$	2,500	00	\$2,500 00
-------------------	----	-------	----	------------

---

PER CAPITA COST.

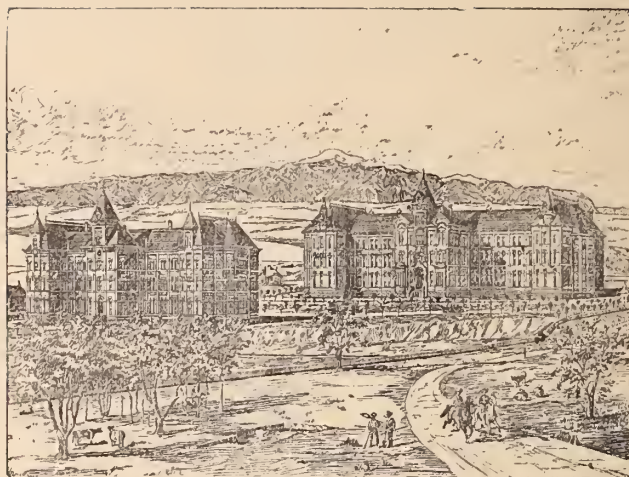
1895.

	Total.	Per Capita.	Per Capita et per diem
Table....	\$20,073 62	\$53 67	\$.147
Clothing....	4,143 10	11 08	.03
Bedding....	1,332 16	3 56	.009
Imp. and Repairs.....	4,676 52	12 50	.034
Stable, Farm & Garden.	2,484 88	6 65	.018
Kitchen & Laundry.....	1,669 56	4 46	.012
Medical Supplies....	875 95	2 35	.007
Contingent....	668 30	1 78	.005
Furniture & Fixtures...	291 50	78	.002
Fuel.....	3,120 50	8 34	.023
Light....	1,934 45	5 17	.014
Water .....	862 50	2 30	.006
Telephone....	80 00	21	.001
Mechanical Restraint ..	341 00	91	.003
Wages .....	10,576 55	28 28	.077
Salaries.....	6,500 00	17 40	.048
	\$59,630 59	\$159 44	\$.436

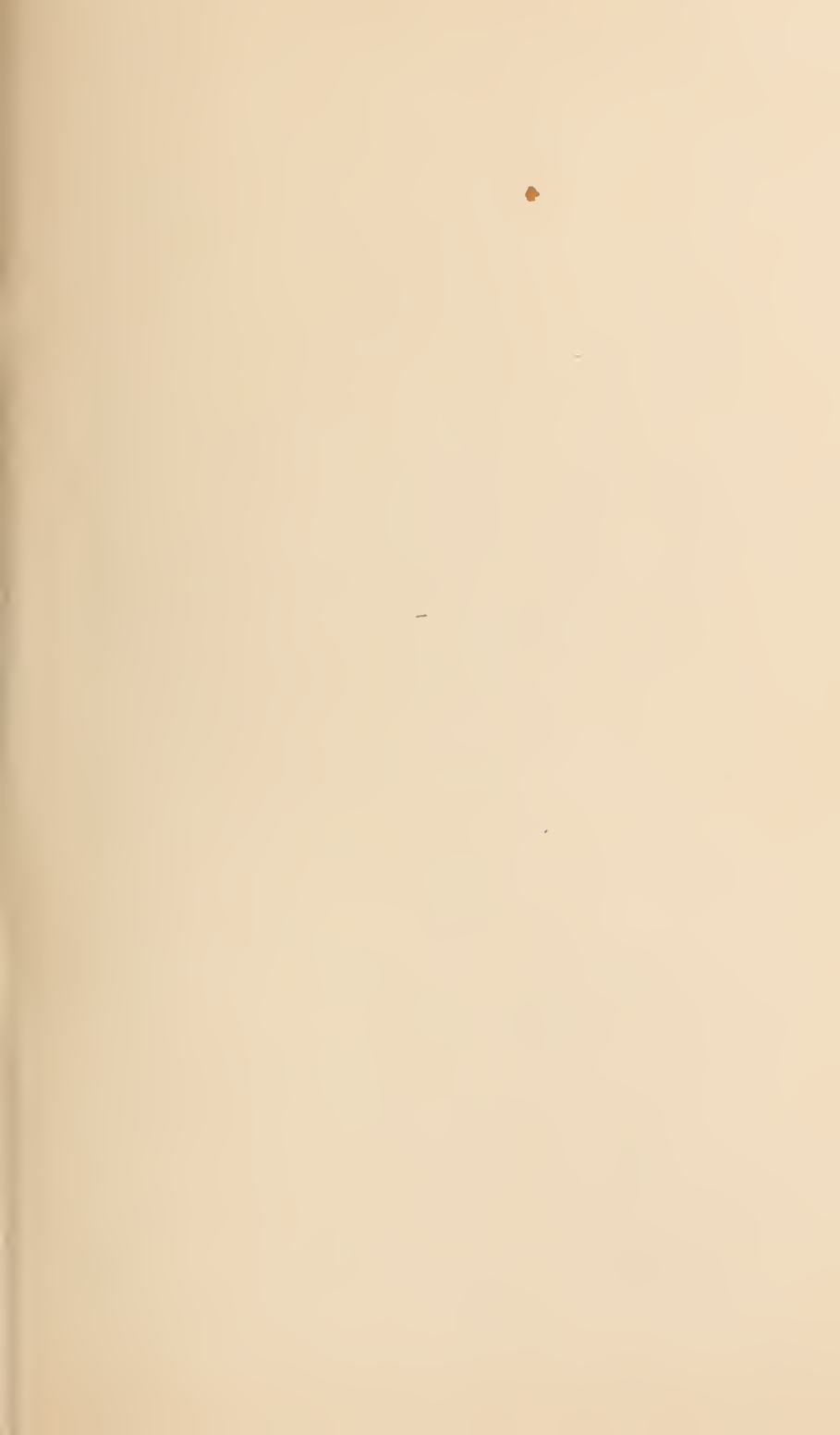
PER CAPITA COST.

1896.

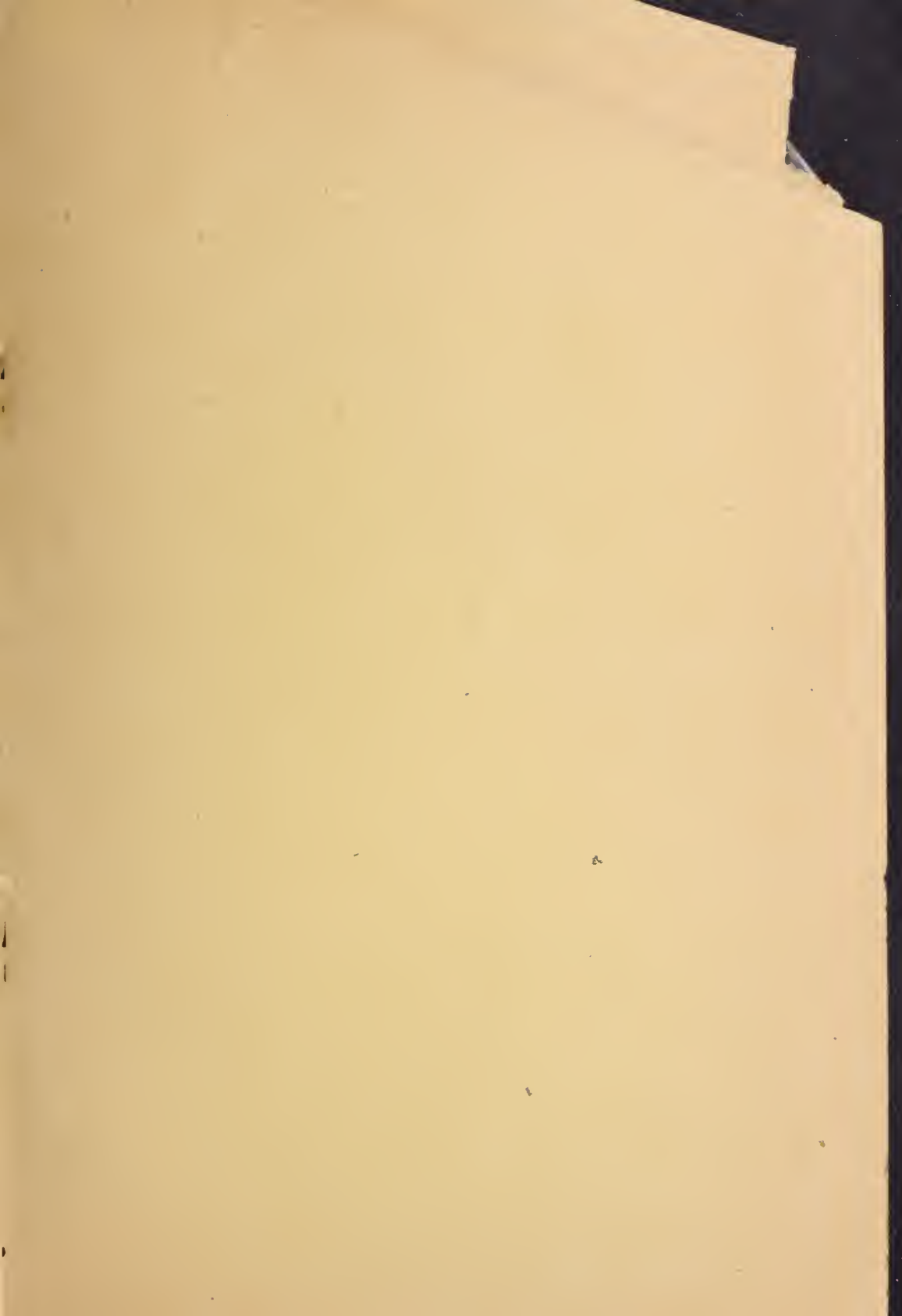
Table....	\$18,695 42	\$46 39	\$.127
Clothing....	3,905 22	9 69	.021
Bedding....	1,029 45	2 55	.007
Imp. and Repairs....	3,419 15	8 48	.023
Stable, Farm & Garden.	1,720 31	4 27	.012
Kitchen & Laundry....	2,230 86	5 54	.015
Medical Supplies.....	1,177 16	2 92	.008
Contingent .....	687 60	1 71	.005
Furniture & Fixtures...	372 90	93	.003
Fuel .....	2,962 99	7 36	.02
Light....	1,650 50	4 10	.011
Water....	1,122 65	2 79	.008
Telephone.....	100 00	24	.001
Stock, Imp. & Produce..	62 50	15	.001
Wages .....	11,349 31	28 17	.077
Salaries .....	6,575 00	16 31	.044
	\$57,061 02	\$141 60	\$.388











**RECEIVED**

NOV 07 1996

**STATE PUBLICATIONS**  
Colorado State Library