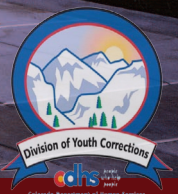


Ridge View Youth Services Center



2013 Annual Performance Report

A Colorado Division of Youth Corrections Facility operated by Rite of Passage



School Board Members

Pat Hayes, President
Carol Nollsch, Vice-President
Craig Bowman, Secretary
Judy Sutherland, Treasurer
Nancy Spence, Member
Charlie Meyer, Member
Pat Grippe, Member
Bob Eikermann, Member
Elton Jones, Member
Judy Morton, Member
Vel Garner, Member

Community Advisory Board Members

Jerry Adamek	Lou Lopez
Bonnie Cady	Douglas E. MacCarthy
Pat Cervera	Mike Marcotte
Julie DeNicola	Stephen McDonald
Bob Eikerman	Kent Moe
John Greene	Robert L. Sutherland
Ed Greivel	Rep. Nancy Todd
Annette Hunter	Terry Todd
Elton Jones	Pete Webb
Patricia Kirk	Tom Warren



Message From the Director

Whenever I meet former students, they ask about Ridge View. How is this staff member doing? Is that staff member still working there? How was the basketball team this season? Are you still doing three mile runs? Their questions reveal the value of adult mentorship, achievement, participation, direction and sense of belonging, all tenets of the ROP program as well as Positive Youth Development.

Positive Youth Development (PYD), a philosophical approach to serving youth, has been championed by Dr. Jeffrey Butts. The value he places on the applicability of PYD to high risk youth is refreshing because it represents a socially valued approach to working with young people, which enables a higher level of sustainability for youth leaving placement. PYD stresses involvement in activities to enhance competence, connections, character, confidence and contribution to society. Discussions with Dr. Butts prompted us to enhance our PYD offerings including sports, JROTC, music, vocations and community service. These opportunities provide valuable means for students to learn from experiences and foster relationships to develop a sense of belonging and competence.

In 2013, Ridge View offered nine competitive team sports, five enrichment clubs and numerous community service projects, as well as education and vocation opportunities. The benefits of these activities enable students to work together and better connect to others, which is paramount to their normalized development. I am reminded of this every time I watch Mr. Peacock work with members of the Ridge View marching band or Coach Lane directing his players on the football field. The impact of these moments on our youth often come full circle years later when alumni ask about their coaches and mentors.

Bill Wood, Program Director



Community Engagement

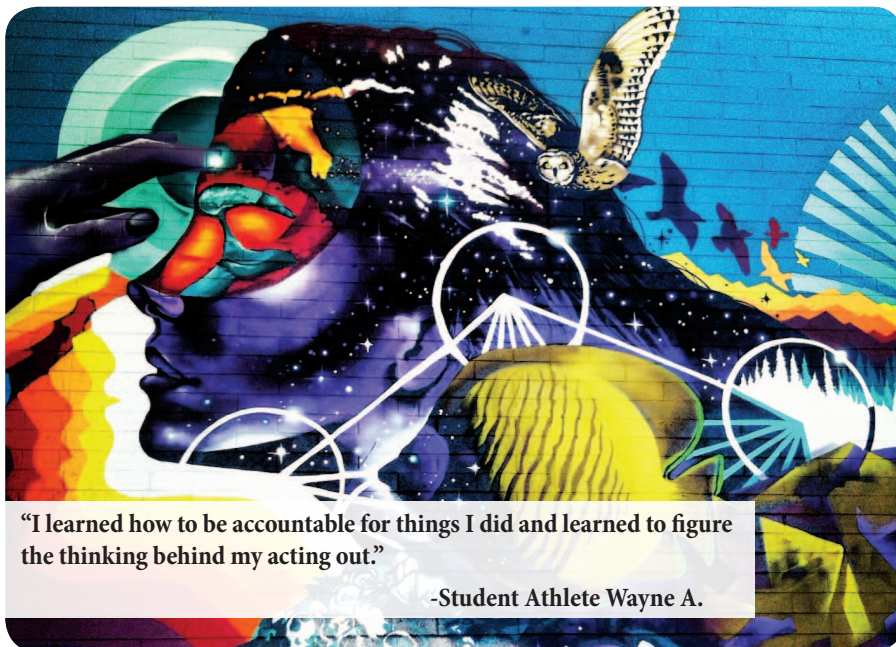
Ridge View provides community service and restitution activities directed by restorative justice guidelines, a strengths-based approach to working with youth, and a wide range of self-development opportunities so youth learn new skills to succeed.

Ridge View students provided over 3,450 hours of community service in 2013 to worthwhile organizations including:

- Special Olympics
- Praying Hands Ranch
- Platte River 1/2 Marathon
- Snow Mountain Ranch Stampede
- Just Between Friends
- Adams County Job Fair
- Vitality Walk
- PEACE Conference
- Our Lady of Loreto
- Cherry Creek Dam Race
- Miracles on Ice
- RVA/Passageway Golf Tournament
- La Junta Clean Up
- Arapahoe County Fair
- Parker Rock Canyon Bike Race
- Ride the Rockies
- Pedal the Plains
- RCJ Mural Project with DYC
- Park to Park
- Buddy Walk for Down Syndrome



Image by Sam Adams
www.adamsdesignphoto.com



"I learned how to be accountable for things I did and learned to figure the thinking behind my acting out."

-Student Athlete Wayne A.

Grants Received

In 2013, RVA received a grant from the Colorado Department of Public Health and Environment for water conservation upgrades. The grant is for the purchase, installation and monitoring of the evapotranspiration controller system at Ridge View Academy. Once installed, the system will reduce water consumption from the South Platte River, thus lessening the impact on water availability.

School

Academic Achievements

- 6 high school diplomas awarded
- 54 GED certificates awarded
- 63% of exiting students received 100+ hours of ROP/CTE training
- Students far exceeded the national average of 3 RIT gains per year, as seen by the following average RIT gains of exiting students per semester:
 - Reading: 7.3
 - Language Arts: 6.9
 - Math: 5.7
- Achieved the highest overall score of all Alternative Education Campuses on the Colorado School Performance Framework



Center for Excellence Award

The Colorado Department of Education, in collaboration with the Denver Public School Board, presented a Center for Excellence Award to Ridge View Academy.

This award is given to Colorado schools with a student population of at least 75% at-risk youth and demonstrates the highest rates of student longitudinal growth, as measured by the Colorado Growth Model. This is the second consecutive year that Ridge View Academy has received this award, and represents the strong partnership Ridge View has with the Colorado Department of Education.

Advancement Via Individual Determination (AVID)

Ridge View Academy has now joined the ranks of Advancement Via Individual Determination (AVID) qualified schools in the Denver Public School District. AVID is a college readiness system for elementary through higher education that is designed to increase school wide learning and performance.

As part of the 21 Districts offering the AVID elective, RVA students can anticipate learning in a non-traditional classroom setting that meets their academic and emotional needs, with an emphasis on objective data through academic reading and writing in the Socratic process.

Scholarships

Passageway Scholarship Foundation provides scholarships to eligible graduates of Rite of Passage who wish to pursue post-secondary education or training. In 2013, Passageway Scholarship Foundation provided the following to Ridge View graduates:

- 22 scholarships awarded to students to attend college or vocational trade school
- \$28,013 in scholarships awarded



Career and Technical Education

At Ridge View Academy, students pursuing post-secondary education interests and aptitudes are assessed through *College in Colorado*, an interactive website designed by the Colorado Commission on Higher Education that provides information and activities for career exploration and academic planning.

Using this tool, students complete different interest surveys and use the outcomes to plan educational paths within a specific career or vocational sector. Through this tool and informal interviews, ROP staff and students plan their time at Ridge View around completing academic and CTE goals. In 2013, these accomplishments included:

- 40 students certified in barbering
- 24 students certified in construction
- 41 students certified in culinary arts
- 33 students certified in media production
- 24 students certified in tool trowel trades

Exiting Students

Through the transitional services offered at Ridge View Academy, the goal is that all students leave with a plan to enroll in school, enlist in the military or be on track for employment.

In 2013, an average of 85% of all students exiting the program were either enrolled, enlisted or employed.

Hands-On Learning

Ridge View Academy has partnered with Habitat for Humanity to further grow the Career and Technical Education program and provide students with job training in the construction trades. The students have begun training on wall framing, construction and reading plans. With training and guidance from the Habitat for Humanity officials, students will participate in construction projects in Colorado's San Luis Valley throughout 2014.



“Overall the Ridge View Academy experience has made me a stronger person.”

-Student Athlete Daniel M.



Treatment

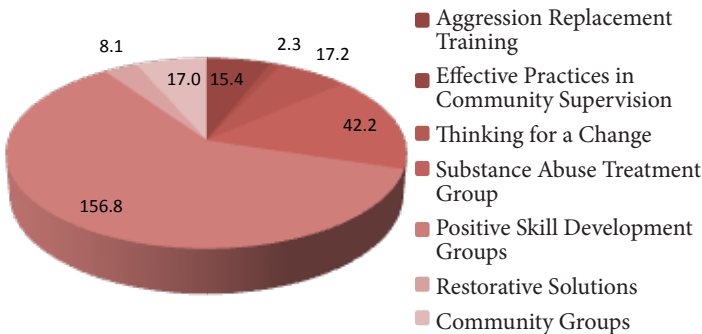
Motivational Interviewing

Motivational Interviewing is an evidence-based practice that strengthens an individual's own intrinsic motivation to change. Through collaboration with a Motivational Interviewing Network of Trainers (MINT) trainer, Ridge View staff embarked on a comprehensive training program that resulted in proficient MI trainers through:

- 16 hours of initial staff training
- Coded interviews using the Motivational Interviewing Treatment Integrity Coding System (MITI) and mentor coaching to ensure proficiency
- 16 hours of a second-round training of the Train for Trainers (TFT) candidates
- Use of specially developed MI training manual to ensure fidelity
- Continued training support for TFT staff

Evidence-Based Treatment

Research suggests that youth should have an appropriate “dosage” of intervention relative to their risk level. The average student received approximately 250 hours of evidence-based treatment in core treatment groups. Hours of treatment include:

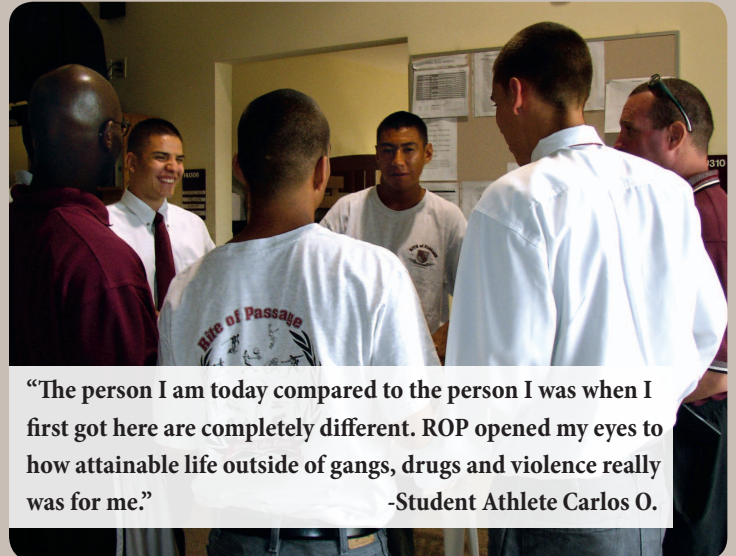
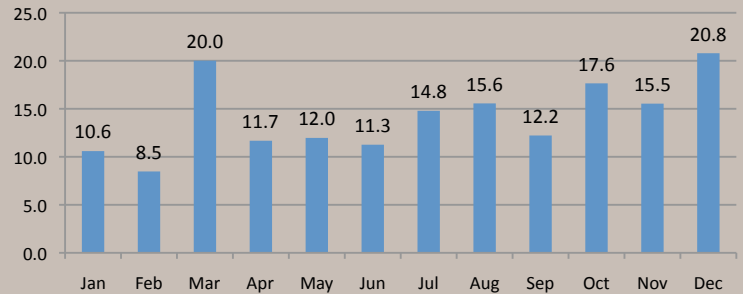


Family Engagement

While at Ridge View Academy, family engagement plays a critical role in the students' treatment progress and in their lives. The benefits of family engagement include improvement in academic outcomes, graduation rates and improved social skills. In 2013, family engagement included:

- 4,646 family visitors
- 28,858 telephone contacts
- 503 hours of individual family therapy

In 2013, the average number of family contacts per student was approximately 170, or slightly over 14 contacts per month.



“The person I am today compared to the person I was when I first got here are completely different. ROP opened my eyes to how attainable life outside of gangs, drugs and violence really was for me.”
-Student Athlete Carlos O.

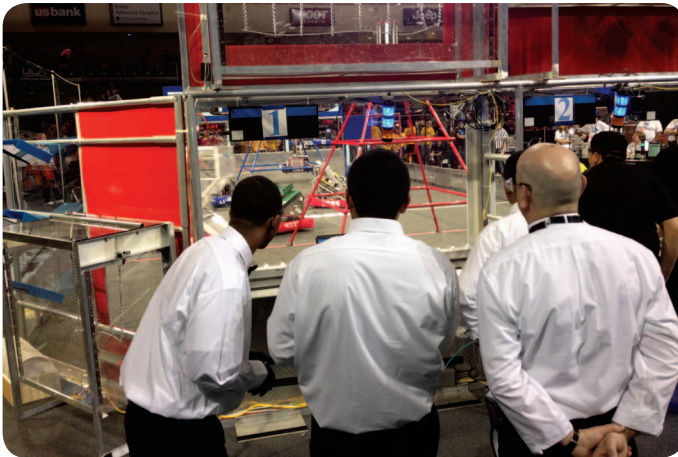
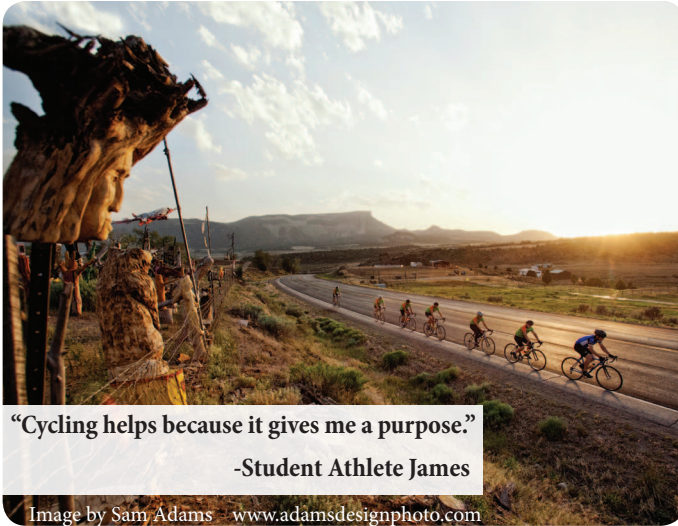
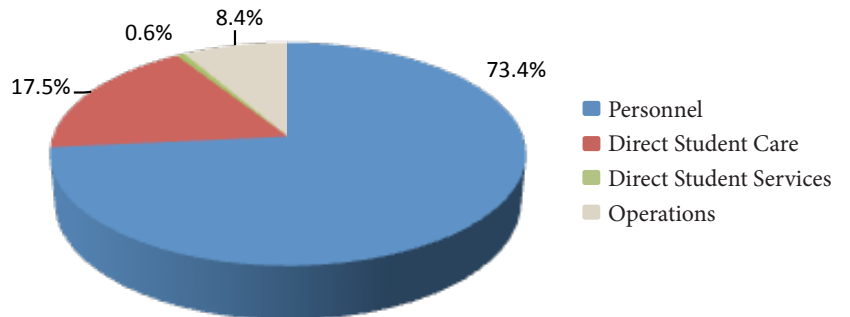
Student Life

Our approach to Positive Youth Development includes opportunities for our students to participate in clubs, athletics and extracurricular activities.

- Robotics Team received the Gracious Professionalism Award at the Colorado State Robotics Competition
- Football qualified for 2A playoffs
- Cycling team featured in Bicycling Magazine
- CHASA Sportsmanship recognition
- Agreement with Habitat for Humanity to frame walls for houses
- Cycling vocation launched
- Participated in legislative testimony in support of a bill to reduce barriers for Division of Youth Corrections youth to vote
- Students viewed the Mars Atmosphere and Volatile Evolution (MAVEN) spacecraft

Operating Expenses

At Ridge View, we are proud to dedicate the majority of funding to our personnel and direct student care.

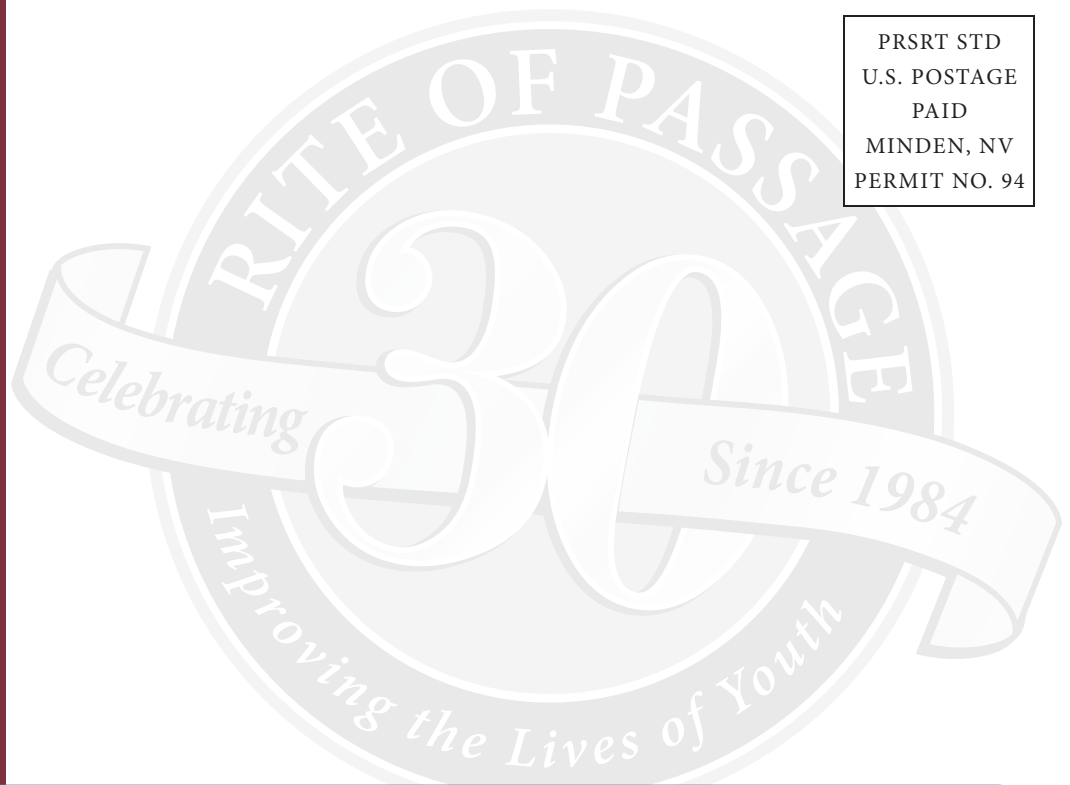




RITE OF PASSAGE

28101 East Quincy Avenue
Watkins, CO 80137
Phone (303) 766-3000
Fax (303) 766-3111
www.ridgeviewacademy.com

PRSRT STD
U.S. POSTAGE
PAID
MINDEN, NV
PERMIT NO. 94



RITE OF PASSAGE

Dedicated to improving the lives of youth



Ridge View Youth Services Center
2013 Annual Performance Report