

June 2022 FY 2021-2022 CYDC JDSAG SUPPLEMENTAL REPORT

Prepared by the Division of Youth Services (DYS)
Data Management & Analysis
August 5



CO L O R A D O
Division of Youth Services
Office of Children, Youth & Families

June 2022 CYDC Supplemental Report

DYS Commitment ADP & New Commitments by Judicial District

Region	JD ¹	2022 Population Estimates ²	ADP ³		New Commitments		
			June 2022	YTD	June 2022	YTD	YTD Rate ⁴
<i>Central Region</i>							
	1st	52,891	15.9	14.1	1	12	2.3
	2nd	57,545	57.4	57.8	2	28	4.9
	5th	9,044	2.0	2.0	0	1	1.1
	18th	112,610	45.0	51.8	5	26	2.3
Central Total		232,090	120.3	125.7	8	67	2.9
<i>Northeast Region</i>							
	8th	35,419	17.7	14.2	3	18	5.1
	13th	8,500	1.0	1.0	0	0	0.0
	17th	68,397	21.4	21.3	3	14	2.0
	19th	38,823	19.0	23.6	2	15	3.9
	20th	29,677	6.0	6.6	0	3	1.0
Northeast Total		180,816	65.1	66.8	8	50	2.8
<i>Southern Region</i>							
	3rd	1,848	2.0	2.6	0	1	5.4
	4th	83,104	36.9	43.1	1	14	1.7
	10th	17,372	9.5	11.2	0	7	4.0
	11th	7,277	2.0	2.0	0	0	0.0
	12th	5,367	3.0	1.5	0	2	3.7
	15th	2,139	0.0	1.1	0	0	0.0
	16th	2,747	1.0	1.7	0	0	0.0
Southern Total		119,854	54.4	63.2	1	24	2.0
<i>Western Region</i>							
	6th	7,169	1.0	3.5	0	1	1.4
	7th	10,421	6.4	4.4	0	6	5.8
	9th	8,228	0.0	1.2	0	0	0.0
	14th	5,680	0.0	0.0	0	0	0.0
	21st	16,229	17.4	16.1	1	16	9.9
	22nd	2,972	1.0	2.2	0	1	3.4
Western Total		50,699	25.8	27.3	1	24	4.7
Statewide Total		583,459	265.5	283.0	18	165	2.8

¹ JD represents the judicial district in which the client was committed. Regional totals are a sum of their respective judicial districts. Regional totals reported here may differ slightly from those reported in the Monthly Population Report, where region is defined by active caseloads.

² Source: DOLA 2022 Estimates

³ Due to rounding, totals shown may not be an exact sum of the subtotals.

⁴ Per 10,000 youth in the population

June 2022 CYDC Supplemental Report

DYS Detention ADP and New Detention Admissions by Judicial District

Region	JD	2022 Population Estimates ¹	ADP		New Admits		YTD New Admit Rate ²
			June 2022	YTD	June 2022	YTD	
<i>Central Region</i>							
	1st	52,891	10.2	12.3	15	198	37.4
	2nd	57,545	30.5	26.8	31	380	66.0
	5th	9,044	0.9	0.5	1	17	18.8
	18th	112,610	35.0	29.1	30	403	35.8
Central Total		232,090	76.6	68.8	77	998	43.0
<i>Northeast Region</i>							
	8th	35,419	6.5	8.0	12	130	36.7
	13th	8,500	5.6	3.1	9	44	51.8
	17th	68,397	18.2	14.2	19	226	33.0
	19th	38,823	5.9	8.5	9	220	56.7
	20th	29,677	1.7	3.4	2	52	17.5
Northeast Total		180,816	38.0	37.1	51	672	37.2
<i>Southern Region</i>							
	3rd	1,848	0.3	1.0	2	20	108.2
	4th	83,104	29.3	27.4	41	424	51.0
	10th	17,372	5.8	6.8	7	98	56.4
	11th	7,277	0.3	0.8	2	37	50.8
	12th	5,367	0.0	0.8	0	9	16.8
	15th	2,139	1.0	0.6	3	14	65.5
	16th	2,747	0.8	1.6	0	18	65.5
Southern Total		119,854	37.4	39.0	55	620	51.7
<i>Western Region</i>							
	6th	7,169	0.03	1.3	1	7	9.8
	7th	10,421	2.6	2.3	1	22	21.1
	9th	8,228	1.8	0.8	0	11	13.4
	14th	5,680	0.0	0.3	0	5	8.8
	21st	16,229	8.4	7.7	15	181	111.5
	22nd	2,972	0.5	0.7	0	15	50.5
Western Total		50,699	13.4	13.2	17	241	47.5
<i>Missing JD or Multiple JDs ³</i>			<i>0.1</i>	<i>0.8</i>	<i>0</i>	<i>0</i>	
Statewide Total		583,459	165.5	158.8	200	2,531	43.4

¹ Source: DOLA 2022 Estimates

² Per 10,000 youth in the population

³ One newly detained youth in October 2021 was an out-of-state fugitive who was briefly detained until extradited to their home state.

June 2022 CYDC Supplemental Report

DYS Detention LOS by Judicial District				
Region	JD	YTD Detention Releases	YTD LOS (days)	LOS (days) Compared to State AVG
<i>Central Region</i>				
	1st	204	25.8	3.4
	2nd	382	21.7	-0.74
	5th	17	10.3	-12.1
	18th	380	21.5	-0.9
Central Total		983	22.3	-0.1
<i>Northeast Region</i>				
	8th	119	19.9	-2.6
	13th	40	16.9	-5.5
	17th	223	13.0	-9.4
	19th	213	11.8	-10.6
	20th	56	21.0	-1.4
Northeast Total		651	14.8	-7.6
<i>Southern Region</i>				
	3rd	19	13.7	-8.7
	4th	419	24.4	2.0
	10th	97	17.0	-5.4
	11th	39	6.4	-16.1
	12th	9	28.0	5.5
	15th	15	19.4	-3.1
	16th	20	28.7	6.3
Southern Total		618	21.9	-0.6
<i>Western Region</i>				
	6th	7	66.3	43.9
	7th	21	38.3	15.8
	9th	10	22.1	-0.4
	14th	6	26.2	3.8
	21st	168	10.9	-11.5
	22nd	15	15.6	-6.8
Western Total		227	16.4	-6.1
Statewide Total		2,479	22.4	-

June 2022 CYDC Supplemental Report

YTD DYS Detention ADP & Ethnicity by Judicial District

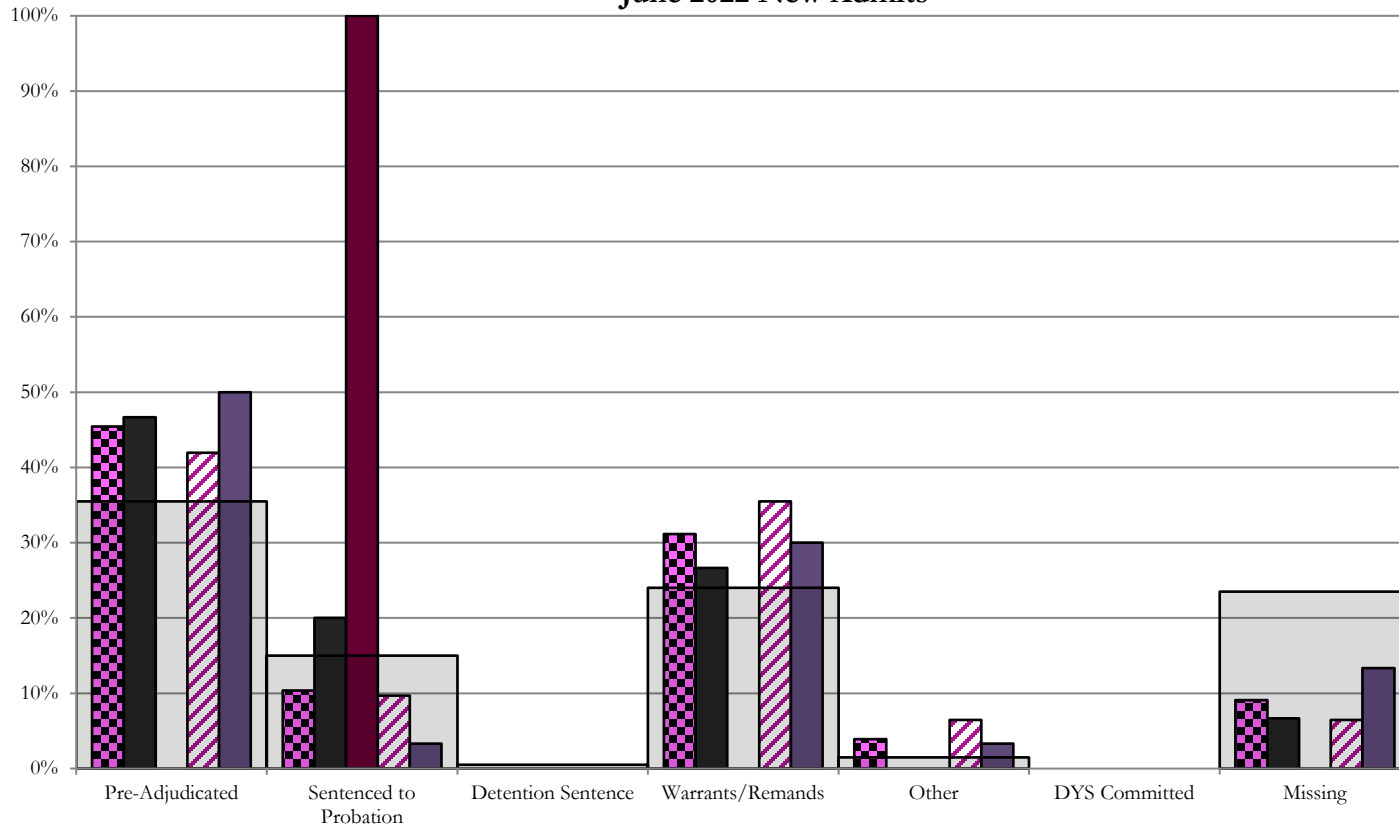
Region	JD	Anglo-American		African-American		Hispanic / Latino		Native-American		Asian-American		Other		TOTAL	
		ADP	%	ADP	%	ADP	%	ADP	%	ADP	%	ADP	%	ADP	%
Central															
	1st	5.2	42.5%	2.6	20.7%	4.0	32.7%	0.1	0.5%	0.2	1.7%	0.2	1.8%	12.3	100%
	2nd	4.6	17.3%	8.8	32.9%	12.4	46.3%	0.1	0.5%	0.8	2.9%	0.1	0.2%	26.8	100%
	5th	0.1	18.5%	0.0	0.0%	0.4	81.5%	0.0	0.0%	0.0	0.0%	0.0	0.0%	0.5	100%
	18th	5.7	19.5%	13.2	45.2%	8.7	30.0%	0.0	0.0%	0.3	1.1%	1.2	4.2%	29.1	100%
Central Total		15.7	24.5%	24.5	24.7%	25.6	47.6%	0.2	0.3%	1.3	1.4%	1.5	1.6%	68.8	100%
Northeast															
	8th	5.6	69.4%	0.9	10.8%	1.4	18.1%	0.0	0.0%	0.0	0.5%	0.1	1.2%	8.0	100%
	13th	1.7	53.8%	1.0	32.9%	0.4	11.8%	0.1	1.5%	0.0	0.0%	0.0	0.0%	3.1	100%
	17th	4.4	30.7%	1.8	12.6%	7.6	53.3%	0.0	0.0%	0.0	0.2%	0.4	3.1%	14.2	100%
	19th	4.8	57.0%	0.4	4.9%	3.1	36.5%	0.1	1.6%	0.0	0.0%	0.0	0.0%	8.4	100%
	20th	2.1	61.1%	0.4	11.1%	0.7	21.0%	0.0	0.7%	0.0	0.0%	0.2	6.0%	3.4	100%
Northeast Total		18.5	54.4%	4.5	14.5%	13.2	28.1%	0.2	0.8%	0.1	0.1%	0.7	2.1%	37.1	100%
Southern															
	3rd	0.4	35.8%	0.0	0.0%	0.6	64.2%	0.0	0.0%	0.0	0.0%	0.0	0.0%	1.0	100%
	4th	13.3	48.5%	7.7	28.0%	5.7	20.9%	0.0	0.0%	0.0	0.0%	0.7	2.5%	27.4	100%
	10th	1.0	14.3%	0.3	4.7%	5.5	80.6%	0.0	0.0%	0.0	0.0%	0.0	0.4%	6.8	100%
	11th	0.6	78.0%	0.1	6.8%	0.1	12.8%	0.0	0.0%	0.0	0.0%	0.0	2.5%	0.8	100%
	12th	0.1	17.6%	0.1	8.6%	0.6	73.7%	0.0	0.0%	0.0	0.0%	0.0	0.0%	0.8	100%
	15th	0.3	50.3%	0.2	29.2%	0.1	20.5%	0.0	0.0%	0.0	0.0%	0.0	0.0%	0.6	100%
	16th	0.6	35.4%	0.3	20.3%	0.7	44.3%	0.0	0.0%	0.0	0.0%	0.0	0.0%	1.6	100%
Southern Total		16.2	40.0%	8.6	13.9%	13.4	45.3%	0.0	0.0%	0.0	0.0%	0.8	0.8%	39.0	100%
Western															
	6th	0.1	5.8%	0.0	0.8%	0.4	33.4%	0.8	59.8%	0.0	0.0%	0.0	0.2%	1.3	100%
	7th	2.0	88.2%	0.0	0.2%	0.3	11.6%	0.0	0.0%	0.0	0.0%	0.0	0.0%	2.3	100%
	9th	0.1	7.5%	0.0	0.0%	0.8	92.5%	0.0	0.0%	0.0	0.0%	0.0	0.0%	0.8	100%
	14th	0.3	97.0%	0.0	0.0%	0.0	3.0%	0.0	0.0%	0.0	0.0%	0.0	0.0%	0.4	100%
	21st	6.2	80.7%	0.3	3.2%	1.2	15.5%	0.0	0.0%	0.0	0.0%	0.1	0.7%	7.7	100%
	22nd	0.4	60.8%	0.0	0.0%	0.2	29.5%	0.1	9.7%	0.0	0.0%	0.0	0.0%	0.7	100%
Western Total		9.1	56.7%	0.3	0.7%	2.9	30.9%	0.9	11.6%	0.0	0.0%	0.1	0.2%	13.2	100%
	Missing JD Data	0.4		0.1		0.4		0.0		0.0		0.0		0.8	
Statewide Total		59.8	37.7%	37.9	23.9%	55.4	34.9%	1.2	0.8%	1.4	0.9%	3.0	1.9%	158.8	100%

**June 2022
CYDC JDSAG Supplemental Report**

CYDC Reason Detained (RD) by Judicial District

Region	JD	Monthly New Admits	Pre-Adjudicated				Sentenced to Probation				Detention Sentence								Warrants/Remands				Other								DYS Committed				Missing			
			Felony		Misdemeanor		Technical Violator		New Charges		Probation Sentence		Detention Sentence		Valid Court Order (VCO) Truancy		Awaiting DSS (Social Services) Placement		Failure to Appear (FTA)		Failure to Comply (FTC)		Interstate Compact on Juveniles (ICJ) Hold		Immigration Hold		No Bond Hold		Out-of-Country Warrant		Institutional		Parole		Missing			
			#	%	#	%	#	%	#	%	#	%	#	%	#	%	#	%	#	%	#	%	#	%	#	%	#	%	#	%	#	%	#	%	#	%		
<i>Central Region</i>																																						
	1st	15	3	20.0%	4	26.7%	0	0.0%	3	20.0%	0	0.0%	0	0.0%	0	0.0%	0	0.0%	2	13.3%	2	13.3%	0	0.0%	0	0.0%	0	0.0%	0	0.0%	0	0.0%	0	0.0%	0	0.0%	1	6.7%
	2nd	31	8	25.8%	5	16.1%	1	3.2%	2	6.5%	0	0.0%	0	0.0%	0	0.0%	0	0.0%	4	12.9%	7	22.6%	2	6.5%	0	0.0%	0	0.0%	0	0.0%	0	0.0%	0	0.0%	0	0.0%	2	6.5%
	5th	1	0	0.0%	0	0.0%	0	0.0%	1	100.0%	0	0.0%	0	0.0%	0	0.0%	0	0.0%	0	0.0%	0	0.0%	0	0.0%	0	0.0%	0	0.0%	0	0.0%	0	0.0%	0	0.0%	0	0.0%	0	0.0%
	18th	30	10	33.3%	5	16.7%	1	3.3%	0	0.0%	0	0.0%	0	0.0%	0	0.0%	0	0.0%	2	6.7%	7	23.3%	1	3.3%	0	0.0%	0	0.0%	0	0.0%	0	0.0%	0	0.0%	0	0.0%	4	13.3%
	Central Total	77	21	27.3%	14	18.2%	2	2.6%	6	7.8%	0	0.0%	0	0.0%	0	0.0%	0	0.0%	8	10.4%	16	20.8%	3	3.9%	0	0.0%	0	0.0%	0	0.0%	0	0.0%	0	0.0%	0	0.0%	7	9.1%
<i>Northeast Region</i>																																						
	8th	12	0	0.0%	0	0.0%	0	0.0%	0	0.0%	0	0.0%	0	0.0%	0	0.0%	0	0.0%	0	0.0%	0	0.0%	0	0.0%	0	0.0%	0	0.0%	0	0.0%	0	0.0%	0	0.0%	0	0.0%	12	100.0%
	13th	9	6	66.7%	1	11.1%	0	0.0%	0	0.0%	0	0.0%	0	0.0%	0	0.0%	0	0.0%	0	0.0%	2	22.2%	0	0.0%	0	0.0%	0	0.0%	0	0.0%	0	0.0%	0	0.0%	0	0.0%	0	0.0%
	17th	19	7	36.8%	0	0.0%	0	0.0%	0	0.0%	0	0.0%	0	0.0%	0	0.0%	0	0.0%	0	0.0%	2	10.5%	0	0.0%	0	0.0%	0	0.0%	0	0.0%	0	0.0%	0	0.0%	0	0.0%	10	52.6%
	19th	9	3	33.3%	3	33.3%	0	0.0%	0	0.0%	0	0.0%	0	0.0%	0	0.0%	0	0.0%	0	0.0%	2	22.2%	0	0.0%	0	0.0%	0	0.0%	0	0.0%	0	0.0%	0	0.0%	0	0.0%	1	11.1%
	20th	2	0	0.0%	0	0.0%	0	0.0%	0	0.0%	0	0.0%	0	0.0%	0	0.0%	0	0.0%	0	0.0%	0	0.0%	0	0.0%	0	0.0%	0	0.0%	0	0.0%	0	0.0%	0	0.0%	0	0.0%	2	100.0%
	Northeast Total	51	16	31.4%	4	7.8%	0	0.0%	0	0.0%	0	0.0%	0	0.0%	0	0.0%	0	0.0%	0	0.0%	6	11.8%	0	0.0%	0	0.0%	0	0.0%	0	0.0%	0	0.0%	0	0.0%	0	0.0%	25	49.0%
<i>Southern Region</i>																																						
	3rd	2	0	0.0%	0	0.0%	0	0.0%	0	0.0%	0	0.0%	0	0.0%	0	0.0%	0	0.0%	0	0.0%	1	50.0%	0	0.0%	0	0.0%	0	0.0%	0	0.0%	0	0.0%	0	0.0%	0	0.0%	1	50.0%
	4th	41	11	26.8%	1	2.4%	0	0.0%	14	34.1%	0	0.0%	0	0.0%	0	0.0%	0	0.0%	2	4.9%	11	26.8%	0	0.0%	0	0.0%	0	0.0%	0	0.0%	0	0.0%	0	0.0%	0	0.0%	2	4.9%
	10th	7	0	0.0%	0	0.0%	1	14.3%	3	42.9%	0	0.0%	0	0.0%	0	0.0%	0	0.0%	1	14.3%	1	14.3%	0	0.0%	0	0.0%	0	0.0%	0	0.0%	0	0.0%	0	0.0%	0	0.0%	1	14.3%
	11th	2	0	0.0%	0	0.0%	0	0.0%	0	0.0%	0	0.0%	1	50.0%	0	0.0%	0	0.0%	0	0.0%	0	0.0%	0	0.0%	0	0.0%	0	0.0%	0	0.0%	0	0.0%	0	0.0%	0	0.0%	1	50.0%
	12th	0	0	0.0%	0	0.0%	0	0.0%	0	0.0%	0	0.0%	0	0.0%	0	0.0%	0	0.0%	0	0.0%	0	0.0%	0	0.0%	0	0.0%	0	0.0%	0	0.0%	0	0.0%	0	0.0%	0	0.0%	0	0.0%
	15th	3	1	33.3%	1	33.3%	0	0.0%	0	0.0%	0	0.0%	0	0.0%	0	0.0%	0	0.0%	0	0.0%	0	0.0%	0	0.0%	0	0.0%	0	0.0%	0	0.0%	0	0.0%	0	0.0%	0	0.0%	1	33.3%
	16th	0	0	0.0%	0	0.0%	0	0.0%	0	0.0%	0	0.0%	0	0.0%	0	0.0%	0	0.0%	0	0.0%	0	0.0%	0	0.0%	0	0.0%	0	0.0%	0	0.0%	0	0.0%	0	0.0%	0	0.0%	0	0.0%
	Southern Total	55	12	21.8%	2	3.6%	1	1.8%	17	30.9%	0	0.0%	1	1.8%	0	0.0%	0	0.0%	3	5.5%	13	23.6%	0	0.0%	0	0.0%	0	0.0%	0	0.0%	0	0.0%	0	0.0%	0	0.0%	6	10.9%
<i>Western Region</i>																																						
	6th	1	0	0.0%	0	0.0%	0	0.0%	0	0.0%	0	0.0%	0	0.0%	0	0.0%	0	0.0%	0	0.0%	0	0.0%	0	0.0%	0	0.0%	0	0.0%	0	0.0%	0	0.0%	0	0.0%	0	0.0%	1	100.0%
	7th	1	0	0.0%	0	0.0%	0	0.0%	0	0.0%	0	0.0%	0	0.0%	0	0.0%	0	0.0%	0	0.0%	0	0.0%	0	0.0%	0	0.0%	0	0.0%	0	0.0%	0	0.0%	0	0.0%	0	0.0%	1	100.0%
	9th	0	0	0.0%	0	0.0%	0	0.0%	0	0.0%	0	0.0%	0	0.0%	0	0.0%	0	0.0%	0	0.0%	0	0.0%	0	0.0%	0	0.0%	0	0.0%	0	0.0%	0	0.0%	0	0.0%	0	0.0%	0	0.0%
	14th	0	0	0.0%	0	0.0%	0	0.0%	0	0.0%	0	0.0%	0	0.0%	0	0.0%	0	0.0%	0	0.0%	0	0.0%	0	0.0%	0	0.0%	0	0.0%	0	0.0%	0	0.0%	0	0.0%	0	0.0%	0	0.0%
	21st	15	0	0.0%	2	13.3%	0	0.0%	4	26.7%	0	0.0%	0	0.0%	0	0.0%	0	0.0%	0	0.0%	2	13.3%	0	0.0%	0	0.0%	0	0.0%	0	0.0%	0	0.0%	0	0.0%	0	0.0%	7	46.7%
	22nd	0	0	0.0%	0	0.0%	0	0.0%	0	0.0%	0	0.0%	0	0.0%	0	0.0%	0	0.0%	0	0.0%	0	0.0%	0	0.0%	0	0.0%	0	0.0%	0	0.0%	0	0.0%	0	0.0%	0	0.0%	0	0.0%
	Western Total	17	0	0.0%	2	11.8%	0	0.0%	4	23.5%	0	0.0%	0	0.0%	0	0.0%	0	0.0%	0	0.0%	2	11.8%	0	0.0%	0	0.0%	0	0.0%	0	0.0%	0	0.0%	0	0.0%	9	52.9%		
	Other Total	0	0	0.0%	0	0.0%	0	0.0%	0	0.0%	0	0.0%	0	0.0%	0	0.0%	0	0.0%	0	0.0%	0	0.0%	0	0.0%	0	0.0%	0	0.0%	0	0.0%	0	0.0%	0	0.0%	0	0.0%		
	Individual RD Totals	200	49	24.5%	22	11.0%	3	1.5%	27	13.5%	0	0.0%	1	0.5%	0	0.0%	0	0.0%	11	5.5%	37	18.5%	3	1.5%	0	0.0%	0	0.0%	0	0.0%	0	0.0%	0	0.0%	47	23.5%		
	Statewide Totals	200	71	35.5%	30	15.0%	1	0.5%	27	13.5%	0	0.0%	1	0.5%	0	0.0%	0	0.0%	11	5.5%	37	18.5%	3	1.5%	0	0.0%	0	0.0%	0	0.0%	0	0.0%	0	0.0%	47	23.5%		

Central Region CYDC Reason Detained by Judicial District June 2022 New Admits



■ CENTRAL REGION, 77 New Admits

■ 5th JD, 1 New Admits

■ 18th JD, 30 New Admits

■ 1st JD, 15 New Admits

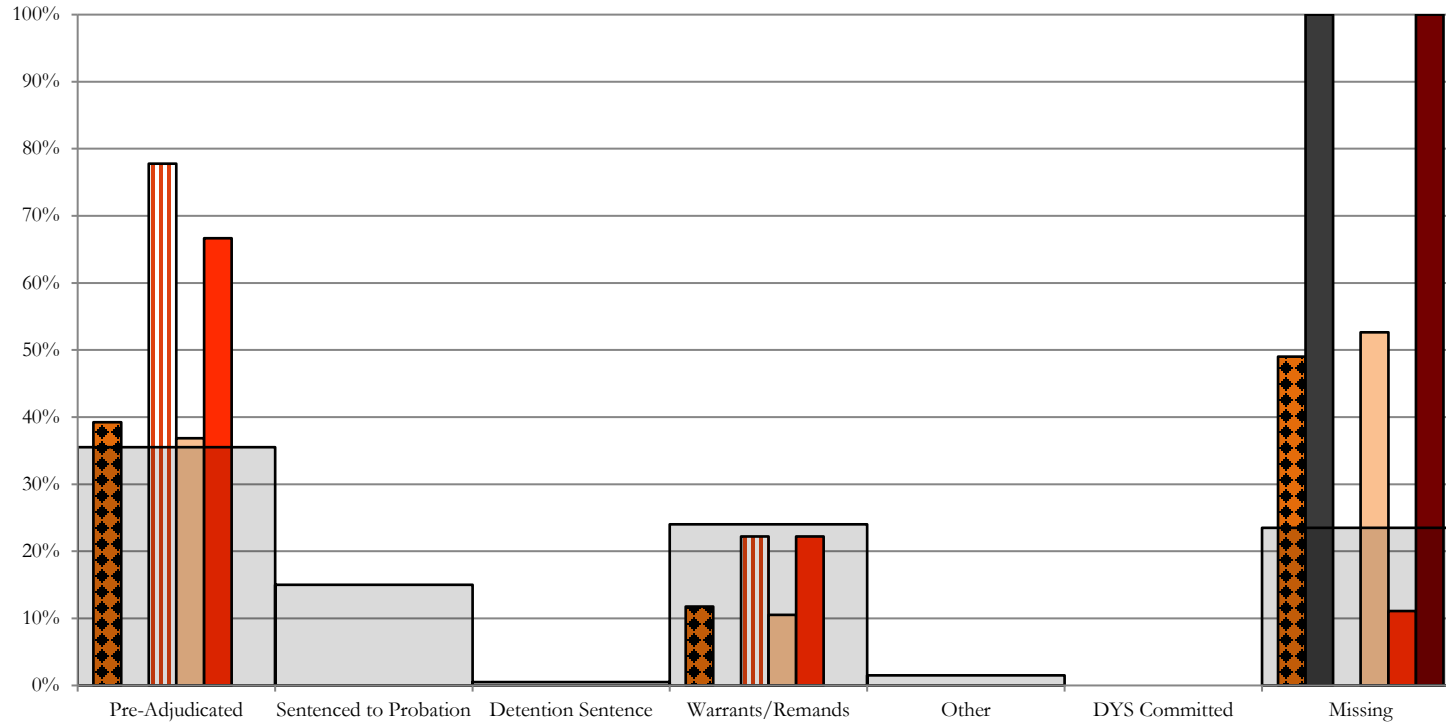
■ 2nd JD, 31 New Admits

■ STATEWIDE, 200 New Admits

Northeast Region

CYDC Reason Detained by Judicial District

June 2022 New Admits



■ NORTHEAST REGION, 51 New Admits

■ 8th JD, 12 New Admits

■ 13th JD, 9 New Admits

■ 17th JD, 19 New Admits

■ 19th JD, 9 New Admits

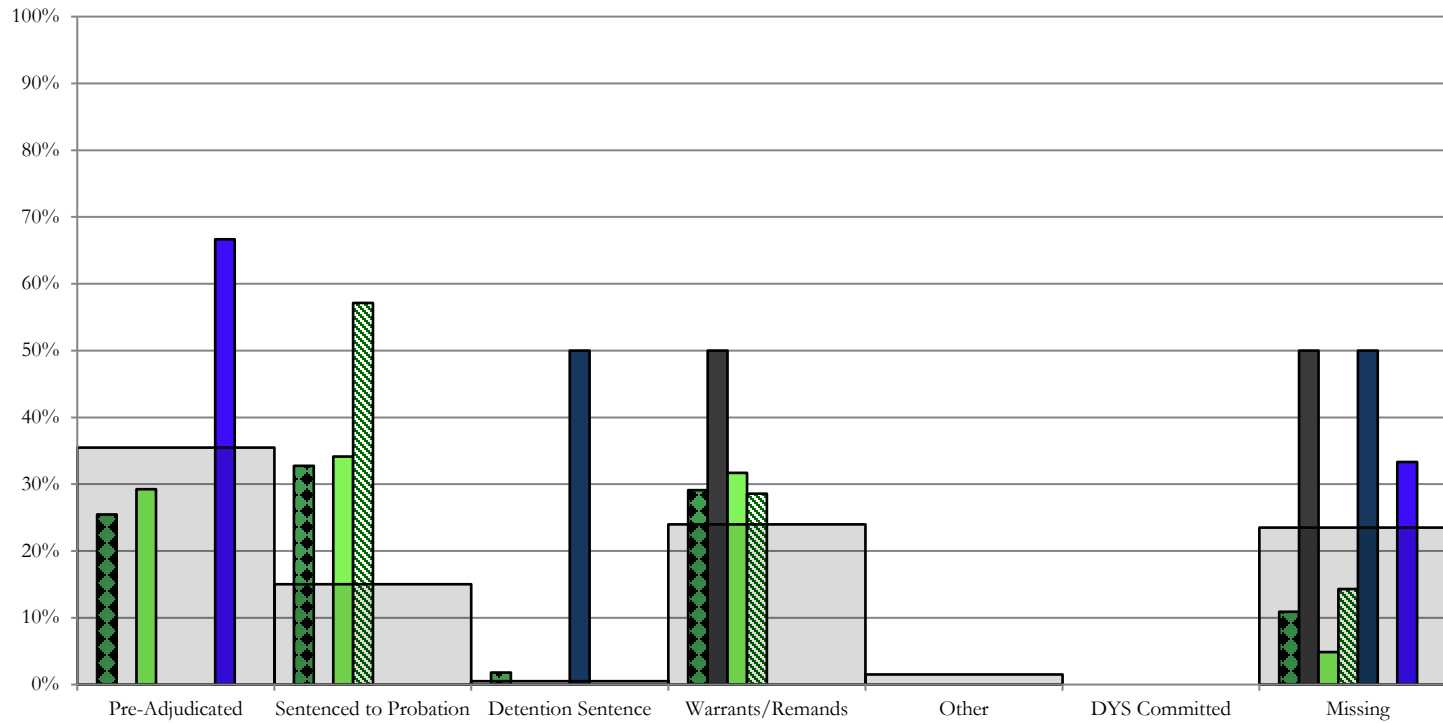
■ 20th JD, 2 New Admits

■ STATEWIDE, 200 New Admits

Southern Region

CYDC Reason Detained by Judicial District

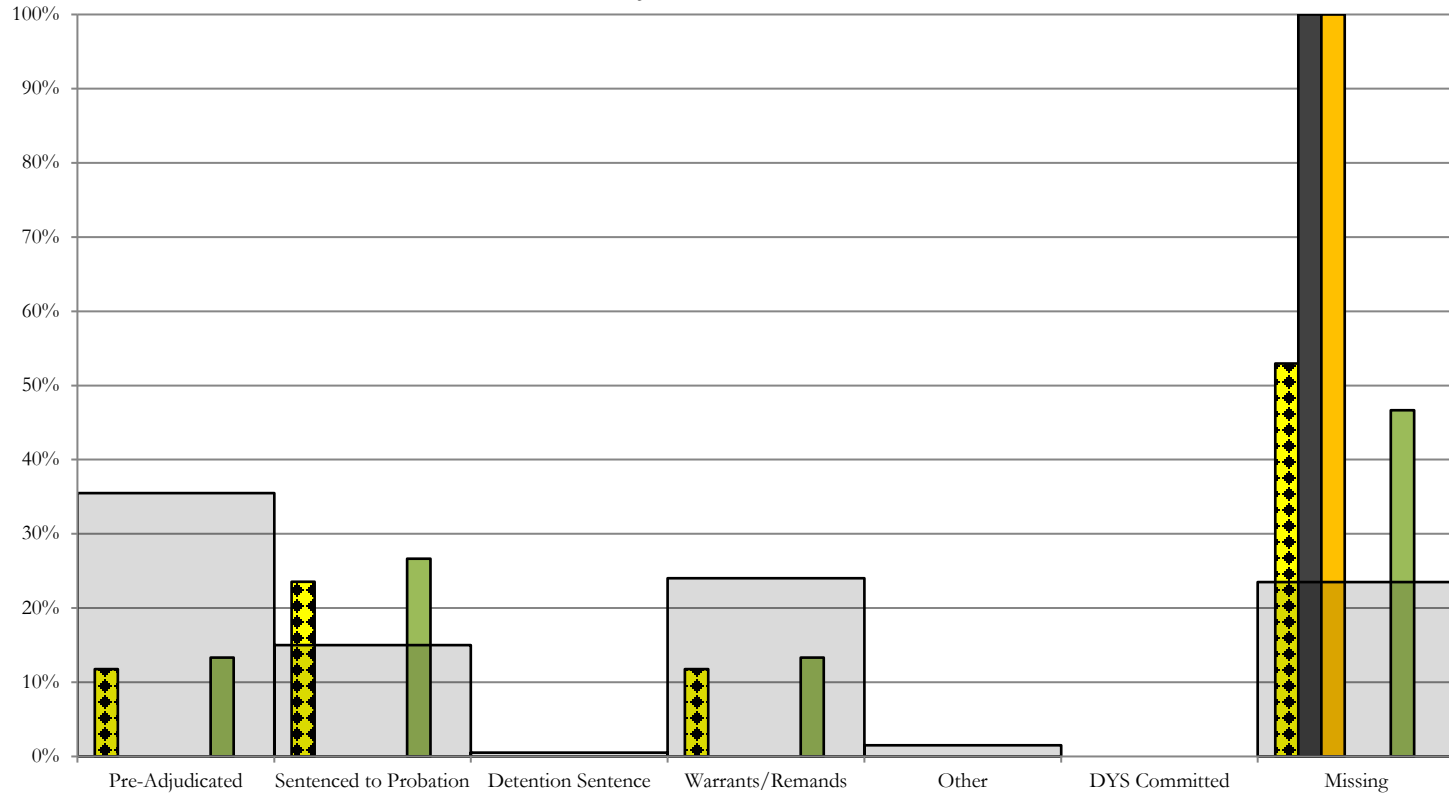
June 2022 New Admits



- SOUTHERN REGION, 55 New Admits
- 4th JD, 41 New Admits
- 11th JD, 2 New Admits
- 15th JD, 3 New Admits
- STATEWIDE, 200 New Admits
- 3rd JD, 2 New Admits
- 10th JD, 7 New Admits
- 12th JD, 0 New Admits
- 16th JD, 0 New Admits

Western Region

CYDC Reason Detained by Judicial District June 2022 New Admits



■ WESTERN REGION, 17 New Admits

■ 7th JD, 1 New Admits

■ 14th JD, 0 New Admits

■ 22nd JD, 0 New Admits

■ 6th JD, 1 New Admits

■ 9th JD, 0 New Admits

■ 21st JD, 15 New Admits

■ STATEWIDE, 200 New Admits

June 2022 CYDC JDSAG Supplemental Report

CYDC Reason Detained (RD) by Judicial District Year to Date

Region	JD	Year to Date New Admits	Pre-Adjudicated		Sentenced to Probation		Detention Sentence				Warrants/Remands		Other		DYS Committed		Missing															
			Felony	Misdemeanor	Technical Violator	New Charges	Probation Sentence	Detention Sentence	Valid Court Order (VCO) Truancy	Awaiting DSS (Social Services) Placement	Failure to Appear (FTA)	Failure to Comply (FTC)	Interstate Compact on Juveniles (ICJ) Hold	Immigration Hold	Institutional	Parole	Missing															
			#	%	#	%	#	%	#	%	#	%	#	%	#	%	#	%	#	%	#	%	#	%	#	%	#	%				
Central Region																																
	1st	198	46	23.2%	25	12.6%	2	1.0%	28	14.1%	0	0.0%	1	0.5%	0	0.0%	0	0.0%	19	9.6%	36	18.2%	0	0.0%	0	0.0%	0	0.0%	0	0.0%	41	20.7%
	2nd	380	154	40.5%	66	17.4%	1	0.3%	6	1.6%	0	0.0%	0	0.0%	0	0.0%	0	0.0%	35	9.2%	84	22.1%	8	2.1%	0	0.0%	0	0.0%	0	0.0%	26	6.8%
	5th	17	6	35.3%	1	5.9%	0	0.0%	5	29.4%	0	0.0%	1	5.9%	0	0.0%	0	0.0%	0	0.0%	1	5.9%	0	0.0%	0	0.0%	0	0.0%	0	0.0%	3	17.6%
	18th	403	126	31.3%	61	15.1%	1	0.2%	46	11.4%	0	0.0%	8	2.0%	0	0.0%	0	0.0%	17	4.2%	84	20.8%	6	1.5%	0	0.0%	0	0.0%	0	0.0%	54	13.4%
Central Total		998	332	33.3%	153	15.3%	4	0.4%	85	8.5%	0	0.0%	10	1.0%	0	0.0%	0	0.0%	71	7.1%	205	20.5%	14	1.4%	0	0.0%	0	0.0%	0	0.0%	124	12.4%
Northeast Region																																
	8th	130	3	2.3%	0	0.0%	0	0.0%	2	1.5%	0	0.0%	3	2.3%	0	0.0%	0	0.0%	1	0.8%	3	2.3%	0	0.0%	0	0.0%	0	0.0%	0	0.0%	118	90.8%
	13th	44	22	50.0%	7	15.9%	3	6.8%	0	0.0%	0	0.0%	2	4.5%	0	0.0%	0	0.0%	0	0.0%	9	20.5%	1	2.3%	0	0.0%	0	0.0%	0	0.0%	0	0.0%
	17th	226	40	17.7%	14	6.2%	0	0.0%	49	21.7%	0	0.0%	2	0.9%	0	0.0%	0	0.0%	11	4.9%	27	11.9%	4	1.8%	0	0.0%	0	0.0%	0	0.0%	79	35.0%
	19th	220	67	30.5%	43	19.5%	0	0.0%	7	3.2%	0	0.0%	2	0.9%	0	0.0%	0	0.0%	13	5.9%	61	27.7%	1	0.5%	0	0.0%	0	0.0%	0	0.0%	26	11.8%
	20th	52	5	9.6%	2	3.8%	0	0.0%	0	0.0%	0	0.0%	6	11.5%	0	0.0%	1	1.9%	0	0.0%	3	5.8%	0	0.0%	0	0.0%	0	0.0%	0	0.0%	35	67.3%
Northeast Total		672	137	20.4%	66	9.8%	3	0.4%	58	8.6%	0	0.0%	15	2.2%	0	0.0%	1	0.1%	25	3.7%	103	15.3%	6	0.9%	0	0.0%	0	0.0%	0	0.0%	258	38.4%
Southern Region																																
	3rd	20	7	35.0%	1	5.0%	0	0.0%	0	0.0%	0	0.0%	0	0.0%	0	0.0%	0	0.0%	2	10.0%	2	10.0%	0	0.0%	0	0.0%	0	0.0%	0	0.0%	8	40.0%
	4th	424	160	37.7%	43	10.1%	0	0.0%	61	14.4%	0	0.0%	5	1.2%	0	0.0%	1	0.2%	41	9.7%	68	16.0%	0	0.0%	0	0.0%	0	0.0%	3	0.7%	42	9.9%
	10th	98	10	10.2%	0	0.0%	2	2.0%	35	35.7%	0	0.0%	6	6.1%	0	0.0%	1	1.0%	9	9.2%	9	9.2%	0	0.0%	0	0.0%	0	0.0%	0	0.0%	26	26.5%
	11th	37	2	5.4%	0	0.0%	0	0.0%	2	5.4%	0	0.0%	13	35.1%	0	0.0%	0	0.0%	0	0.0%	0	0.0%	0	0.0%	0	0.0%	0	0.0%	0	0.0%	20	54.1%
	12th	9	2	22.2%	0	0.0%	0	0.0%	1	11.1%	0	0.0%	0	0.0%	0	0.0%	0	0.0%	0	0.0%	0	0.0%	0	0.0%	0	0.0%	0	0.0%	0	0.0%	6	66.7%
	15th	14	6	42.9%	2	14.3%	0	0.0%	0	0.0%	0	0.0%	0	0.0%	0	0.0%	0	0.0%	1	7.1%	1	7.1%	0	0.0%	0	0.0%	0	0.0%	0	0.0%	4	28.6%
	16th	18	1	5.6%	0	0.0%	0	0.0%	0	0.0%	0	0.0%	0	0.0%	0	0.0%	0	0.0%	0	0.0%	0	0.0%	0	0.0%	0	0.0%	0	0.0%	0	0.0%	17	94.4%
Southern Total		620	188	30.3%	46	7.4%	2	0.3%	99	16.0%	0	0.0%	24	3.9%	0	0.0%	2	0.3%	53	8.5%	80	12.9%	0	0.0%	0	0.0%	0	0.0%	3	0.5%	123	19.8%
Western Region																																
	6th	7	3	42.9%	0	0.0%	0	0.0%	0	0.0%	0	0.0%	0	0.0%	0	0.0%	0	0.0%	0	0.0%	1	14.3%	0	0.0%	0	0.0%	0	0.0%	0	0.0%	3	42.9%
	7th	22	10	45.5%	0	0.0%	2	9.1%	1	4.5%	0	0.0%	1	4.5%	0	0.0%	0	0.0%	3	13.6%	1	4.5%	1	4.5%	0	0.0%	0	0.0%	0	0.0%	3	13.6%
	9th	11	1	9.1%	1	9.1%	1	9.1%	2	18.2%	0	0.0%	0	0.0%	0	0.0%	0	0.0%	0	0.0%	3	27.3%	0	0.0%	0	0.0%	0	0.0%	0	0.0%	3	27.3%
	14th	5	0	0.0%	2	40.0%	0	0.0%	1	20.0%	0	0.0%	0	0.0%	0	0.0%	0	0.0%	0	0.0%	0	0.0%	0	0.0%	0	0.0%	0	0.0%	0	0.0%	2	40.0%
	21st	181	17	9.4%	9	5.0%	2	1.1%	21	11.6%	0	0.0%	1	0.6%	0	0.0%	0	0.0%	10	5.5%	71	39.2%	0	0.0%	0	0.0%	0	0.0%	0	0.0%	50	27.6%
	22nd	15	0	0.0%	0	0.0%	0	0.0%	5	33.3%	0	0.0%	0	0.0%	0	0.0%	0	0.0%	0	0.0%	0	0.0%	0	0.0%	0	0.0%	0	0.0%	0	0.0%	10	66.7%
Western Total		241	31	12.9%	12	5.0%	5	2.1%	30	12.4%	0	0.0%	2	0.8%	0	0.0%	0	0.0%	13	5.4%	76	31.5%	1	0.4%	0	0.0%	0	0.0%	0	0.0%	71	29.5%
Individual RD Totals		2,531	688	27.2%	277	10.9%	14	0.6%	272	10.7%	0	0.0%	51	2.0%	0	0.0%	3	0.1%	162	6.4%	464	18.3%	21	0.8%	0	0.0%	0	0.0%	3	0.1%	576	22.8%
Statewide Totals		2,531	965	38.1%	286	11.3%			54				2.1%			626	24.7%		21			3	0.1%			576	22.8%					

June 2022 CYDC Supplemental Report

DYS Detention Maximum Youth Served by Judicial District ¹

Region	JD	Detention Capacity	Detention ADP		Maximum Youth Served on a Single Day ^{2,3}			
			June 2022	YTD	June 2022		YTD	
					Number of Youth	% of Detention Capacity	Number of Youth	% of Detention Capacity
<i>Central Region</i>								
	1st	20	10.2	12.3	13	65.0%	20	100.0%
	2nd	35	30.5	26.8	36	102.9%	37	105.7%
	5th	2	0.9	0.5	3	150.0%	4	200.0%
	18th	37	35.0	29.1	38	102.7%	40	108.1%
Central Region		94	76.6	68.8	85	90.4%	85	90.4%
<i>Northeast Region</i>								
	8th	11	6.5	8.0	11	100.0%	14	127.3%
	13th	2	5.6	3.1	7	350.0%	7	350.0%
	17th	17	18.2	14.2	22	129.4%	26	152.9%
	19th	15	5.9	8.5	7	46.7%	13	86.7%
	20th	10	1.7	3.4	4	40.0%	8	80.0%
Northeast Region		55	38.0	37.1	43	78.2%	50	90.9%
<i>Southern Region</i>								
	3rd	2	0.3	1.0	2	100.0%	3	150.0%
	4th	27	29.3	27.4	37	137.0%	37	137.0%
	10th	10	5.8	6.8	6	60.0%	10	100.0%
	11th	2	0.3	0.8	2	100.0%	3	150.0%
	12th	2	0.0	0.8	0	0.0%	3	150.0%
	15th	2	1.0	0.6	2	100.0%	3	150.0%
	16th	2	0.8	1.6	1	50.0%	3	150.0%
Southern Region		47	37.4	39.0	44	93.6%	47	100.0%
<i>Western Region</i>								
	6th	2	0.03	1.3	1	50.0%	3	150.0%
	7th	3	2.6	2.3	3	100.0%	6	200.0%
	9th	2	1.8	0.8	3	150.0%	4	200.0%
	14th	2	0.0	0.3	0	0.0%	2	100.0%
	21st	8	8.4	7.7	12	150.0%	13	162.5%
	22nd	2	0.5	0.7	1	50.0%	4	200.0%
Western Region		19	13.4	13.2	18	94.7%	19	100.0%
<i>Missing JD or Multiple JDs</i>			0.1	0.8				
Statewide		215	165.5	158.8	177	82.3%	181	84.2%

¹ Maximum youth served is the highest number of youth in detention on a single day during the month or fiscal year.

² Regional figures are not the sum of judicial districts, but represent the maximum count on one day for the entire region.

³ State figures are not the sum of regional figures, but represent the maximum count on one day for the entire state.