

May 2022 FY 2021-2022 CYDC JDSAG SUPPLEMENTAL REPORT

Prepared by the Division of Youth Services (DYS)
Data Management & Analysis
June 22



COLORADO
Division of Youth Services
Office of Children, Youth & Families

May 2022 CYDC Supplemental Report

DYS Commitment ADP & New Commitments by Judicial District

Region	JD ¹	2022 Population Estimates ²	ADP ³		New Commitments		
			May 2022	YTD	May 2022	YTD	YTD Rate ⁴
<i>Central Region</i>							
	1st	52,891	16.6	14.0	1	11	2.1
	2nd	57,545	55.5	56.5	2	26	4.5
	5th	9,044	2.1	2.0	0	1	1.1
	18th	112,610	40.7	51.4	3	21	1.9
Central Total		232,090	114.9	123.9	6	59	2.5
<i>Northeast Region</i>							
	8th	35,419	10.9	11.6	1	15	4.2
	13th	8,500	1.0	1.0	0	0	0.0
	17th	68,397	17.3	20.8	3	11	1.6
	19th	38,823	18.2	22.7	2	13	3.3
	20th	29,677	6.9	6.7	0	3	1.0
Northeast Total		180,816	54.2	62.7	6	42	2.3
<i>Southern Region</i>							
	3rd	1,848	2.0	2.7	0	1	5.4
	4th	83,104	36.6	43.0	1	13	1.6
	10th	17,372	8.0	10.7	2	7	4.0
	11th	7,277	1.0	2.0	0	0	0.0
	12th	5,367	1.5	1.3	1	2	3.7
	15th	2,139	0.0	1.2	0	0	0.0
	16th	2,747	1.0	1.8	0	0	0.0
Southern Total		119,854	50.1	62.5	4	23	1.9
<i>Western Region</i>							
	6th	7,169	1.2	3.2	0	1	1.4
	7th	10,421	6.0	4.1	0	6	5.8
	9th	8,228	0.0	1.2	0	0	0.0
	14th	5,680	0.0	0.0	0	0	0.0
	21st	16,229	18.3	15.9	1	15	9.2
	22nd	2,972	0.8	2.2	0	1	3.4
Western Total		50,699	26.3	26.6	1	23	4.5
Statewide Total		583,459	245.5	275.8	17	147	2.5

¹ JD represents the judicial district in which the client was committed. Regional totals are a sum of their respective judicial districts. Regional totals reported here may differ slightly from those reported in the Monthly Population Report, where region is defined by active caseloads.

² Source: DOLA 2022 Estimates

³ Due to rounding, totals shown may not be an exact sum of the subtotals.

⁴ Per 10,000 youth in the population

May 2022 CYDC Supplemental Report

DYS Detention ADP and New Detention Admissions by Judicial District

Region	JD	2022 Population Estimates ¹	ADP		New Admits		YTD New Admit Rate ²
			May 2022	YTD	May 2022	YTD	
<i>Central Region</i>							
	1st	52,891	13.8	12.5	39	183	34.6
	2nd	57,545	23.4	26.5	38	349	60.6
	5th	9,044	0.3	0.5	4	16	17.7
	18th	112,610	33.7	28.6	48	373	33.1
Central Total		232,090	71.2	68.1	129	921	39.7
<i>Northeast Region</i>							
	8th	35,419	5.4	8.1	20	117	33.0
	13th	8,500	3.0	2.9	1	35	41.2
	17th	68,397	19.6	13.8	16	207	30.3
	19th	38,823	6.2	8.7	10	211	54.3
	20th	29,677	0.8	3.5	4	50	16.8
Northeast Total		180,816	35.1	37.0	51	620	34.3
<i>Southern Region</i>							
	3rd	1,848	0.4	1.0	2	18	97.4
	4th	83,104	23.0	28.2	34	383	46.1
	10th	17,372	8.4	6.9	10	91	52.4
	11th	7,277	0.6	0.8	6	35	48.1
	12th	5,367	1.5	0.8	1	9	16.8
	15th	2,139	1.5	0.6	0	11	51.4
	16th	2,747	1.2	1.7	1	18	65.5
Southern Total		119,854	36.5	40.1	54	565	47.1
<i>Western Region</i>							
	6th	7,169	0.4	1.4	1	6	8.4
	7th	10,421	2.6	2.3	3	21	20.2
	9th	8,228	2.9	0.7	2	11	13.4
	14th	5,680	0.2	0.4	0	5	8.8
	21st	16,229	7.8	7.7	17	166	102.3
	22nd	2,972	1.1	0.7	1	15	50.5
Western Total		50,699	15.0	13.1	24	224	44.2
<i>Missing JD or Multiple JDs ³</i>			<i>0.1</i>	<i>0.9</i>	<i>0</i>	<i>0</i>	
Statewide Total		583,459	157.9	159.2	258	2,330	39.9

¹ Source: DOLA 2022 Estimates

² Per 10,000 youth in the population

³ One newly detained youth in October 2021 was an out-of-state fugitive who was briefly detained until extradited to their home state.

May 2022

CYDC Supplemental Report

DYS Detention LOS by Judicial District				
Region	JD	YTD Detention Releases	YTD LOS (days)	LOS (days) Compared to State AVG
<i>Central Region</i>				
	1st	183	27.4	5.3
	2nd	340	21.8	-0.28
	5th	13	11.1	-11.0
	18th	353	20.8	-1.3
Central Total		889	22.4	0.3
<i>Northeast Region</i>				
	8th	105	21.5	-0.6
	13th	34	19.1	-3.0
	17th	202	12.2	-9.9
	19th	204	11.6	-10.5
	20th	53	21.9	-0.2
Northeast Total		598	14.8	-7.2
<i>Southern Region</i>				
	3rd	19	13.7	-8.4
	4th	385	24.8	2.7
	10th	87	16.9	-5.2
	11th	37	6.6	-15.5
	12th	9	28.0	5.9
	15th	12	18.5	-3.6
	16th	19	28.1	6.0
Southern Total		568	22.1	0.0
<i>Western Region</i>				
	6th	6	77.4	55.3
	7th	20	38.1	16.0
	9th	8	12.3	-9.8
	14th	6	26.2	4.1
	21st	151	10.5	-11.6
	22nd	14	12.3	-9.8
Western Total		205	15.8	-6.3
Statewide Total		2,261	22.1	-

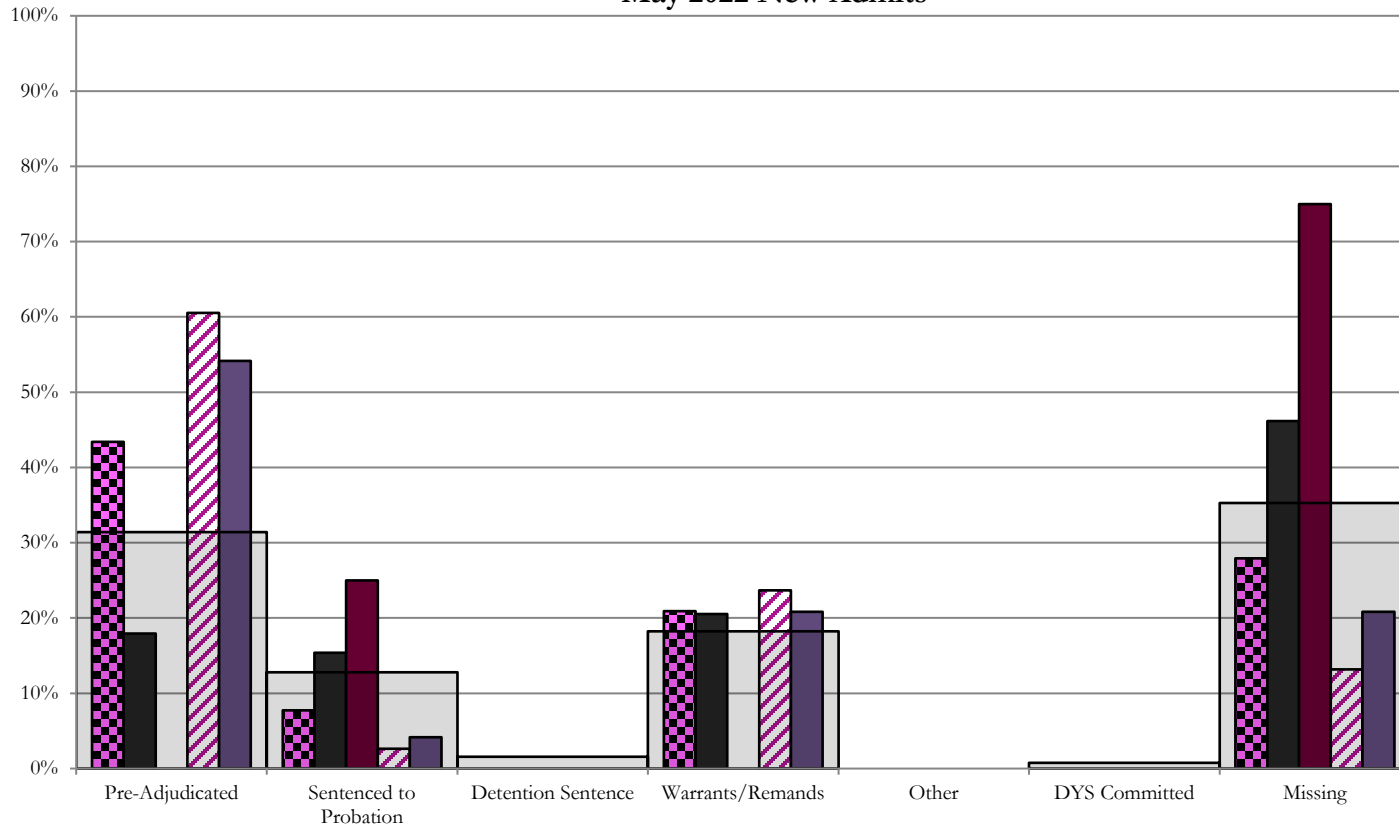
May 2022 CYDC JDSAG Supplemental Report

CYDC Reason Detained (RD) by Judicial District

Region	JD	Monthly New Admits	Pre-Adjudicated				Sentenced to Probation				Detention Sentence						Warrants/Remands				Other						DYS Committed		Missing							
			Felony		Misdemeanor		Technical Violator		New Charges		Probation Sentence		Detention Sentence		Valid Court Order (VCO) Truancy		Awaiting DSS (Social Services) Placement		Failure to Appear (FTA)		Failure to Comply (FTC)		Interstate Compact on Juveniles (ICJ) Hold		Immigration Hold		No Bond Hold		Out-of-Country Warrant		Institutional		Parole		Missing	
			#	%	#	%	#	%	#	%	#	%	#	%	#	%	#	%	#	%	#	%	#	%	#	%	#	%	#	%	#	%	#	%		
<i>Central Region</i>																																				
	1st	39	3	7.7%	4	10.3%	0	0.0%	6	15.4%	0	0.0%	0	0.0%	0	0.0%	0	0.0%	1	2.6%	7	17.9%	0	0.0%	0	0.0%	0	0.0%	0	0.0%	0	0.0%	0	0.0%	18	46.2%
	2nd	38	18	47.4%	5	13.2%	0	0.0%	1	2.6%	0	0.0%	0	0.0%	0	0.0%	0	0.0%	4	10.5%	5	13.2%	0	0.0%	0	0.0%	0	0.0%	0	0.0%	0	0.0%	0	0.0%	5	13.2%
	5th	4	0	0.0%	0	0.0%	0	0.0%	1	25.0%	0	0.0%	0	0.0%	0	0.0%	0	0.0%	0	0.0%	0	0.0%	0	0.0%	0	0.0%	0	0.0%	0	0.0%	0	0.0%	0	0.0%	3	75.0%
	18th	48	19	39.6%	7	14.6%	0	0.0%	2	4.2%	0	0.0%	0	0.0%	0	0.0%	0	0.0%	3	6.3%	7	14.6%	0	0.0%	0	0.0%	0	0.0%	0	0.0%	0	0.0%	0	0.0%	10	20.8%
Central Total		129	40	31.0%	16	12.4%	0	0.0%	10	7.8%	0	0.0%	0	0.0%	0	0.0%	0	0.0%	8	6.2%	19	14.7%	0	0.0%	0	0.0%	0	0.0%	0	0.0%	0	0.0%	0	0.0%	36	27.9%
<i>Northeast Region</i>																																				
	8th	20	0	0.0%	0	0.0%	0	0.0%	0	0.0%	0	0.0%	0	0.0%	0	0.0%	0	0.0%	0	0.0%	0	0.0%	0	0.0%	0	0.0%	0	0.0%	0	0.0%	0	0.0%	0	0.0%	20	100.0%
	13th	1	0	0.0%	1	100.0%	0	0.0%	0	0.0%	0	0.0%	0	0.0%	0	0.0%	0	0.0%	0	0.0%	0	0.0%	0	0.0%	0	0.0%	0	0.0%	0	0.0%	0	0.0%	0	0.0%	0	0.0%
	17th	16	2	12.5%	4	25.0%	0	0.0%	3	18.8%	0	0.0%	0	0.0%	0	0.0%	0	0.0%	0	0.0%	3	18.8%	0	0.0%	0	0.0%	0	0.0%	0	0.0%	0	0.0%	0	0.0%	4	25.0%
	19th	10	0	0.0%	6	60.0%	0	0.0%	0	0.0%	0	0.0%	0	0.0%	0	0.0%	0	0.0%	0	0.0%	2	20.0%	0	0.0%	0	0.0%	0	0.0%	0	0.0%	0	0.0%	0	0.0%	2	20.0%
	20th	4	0	0.0%	0	0.0%	0	0.0%	0	0.0%	0	0.0%	0	0.0%	0	0.0%	0	0.0%	0	0.0%	0	0.0%	0	0.0%	0	0.0%	0	0.0%	0	0.0%	0	0.0%	0	0.0%	4	100.0%
Northeast Total		51	2	3.9%	11	21.6%	0	0.0%	3	5.9%	0	0.0%	0	0.0%	0	0.0%	0	0.0%	0	0.0%	5	9.8%	0	0.0%	0	0.0%	0	0.0%	0	0.0%	0	0.0%	0	0.0%	30	58.8%
<i>Southern Region</i>																																				
	3rd	2	0	0.0%	0	0.0%	0	0.0%	0	0.0%	0	0.0%	0	0.0%	0	0.0%	0	0.0%	0	0.0%	0	0.0%	0	0.0%	0	0.0%	0	0.0%	0	0.0%	0	0.0%	0	0.0%	2	100.0%
	4th	34	10	29.4%	0	0.0%	0	0.0%	10	29.4%	0	0.0%	0	0.0%	0	0.0%	0	0.0%	3	8.8%	4	11.8%	0	0.0%	0	0.0%	0	0.0%	0	0.0%	2	5.9%	5	14.7%	5	14.7%
	10th	10	0	0.0%	0	0.0%	0	0.0%	5	50.0%	0	0.0%	0	0.0%	0	0.0%	0	0.0%	0	0.0%	0	0.0%	0	0.0%	0	0.0%	0	0.0%	0	0.0%	0	0.0%	0	0.0%	5	50.0%
	11th	6	1	16.7%	0	0.0%	0	0.0%	0	0.0%	0	0.0%	4	66.7%	0	0.0%	0	0.0%	0	0.0%	0	0.0%	0	0.0%	0	0.0%	0	0.0%	0	0.0%	0	0.0%	0	0.0%	1	16.7%
	12th	1	0	0.0%	0	0.0%	0	0.0%	0	0.0%	0	0.0%	0	0.0%	0	0.0%	0	0.0%	0	0.0%	0	0.0%	0	0.0%	0	0.0%	0	0.0%	0	0.0%	0	0.0%	0	0.0%	1	100.0%
	15th	0	0	0.0%	0	0.0%	0	0.0%	0	0.0%	0	0.0%	0	0.0%	0	0.0%	0	0.0%	0	0.0%	0	0.0%	0	0.0%	0	0.0%	0	0.0%	0	0.0%	0	0.0%	0	0.0%	0	0.0%
	16th	1	0	0.0%	0	0.0%	0	0.0%	0	0.0%	0	0.0%	0	0.0%	0	0.0%	0	0.0%	0	0.0%	0	0.0%	0	0.0%	0	0.0%	0	0.0%	0	0.0%	0	0.0%	0	0.0%	1	100.0%
Southern Total		54	11	20.4%	0	0.0%	0	0.0%	15	27.8%	0	0.0%	4	7.4%	0	0.0%	0	0.0%	3	5.6%	4	7.4%	0	0.0%	0	0.0%	0	0.0%	0	0.0%	2	3.7%	15	27.8%		
<i>Western Region</i>																																				
	6th	1	0	0.0%	0	0.0%	0	0.0%	0	0.0%	0	0.0%	0	0.0%	0	0.0%	0	0.0%	0	0.0%	0	0.0%	0	0.0%	0	0.0%	0	0.0%	0	0.0%	0	0.0%	0	0.0%	1	100.0%
	7th	3	0	0.0%	0	0.0%	0	0.0%	0	0.0%	0	0.0%	0	0.0%	0	0.0%	0	0.0%	0	0.0%	0	0.0%	0	0.0%	0	0.0%	0	0.0%	0	0.0%	0	0.0%	0	0.0%	3	100.0%
	9th	2	0	0.0%	0	0.0%	0	0.0%	2	100.0%	0	0.0%	0	0.0%	0	0.0%	0	0.0%	0	0.0%	0	0.0%	0	0.0%	0	0.0%	0	0.0%	0	0.0%	0	0.0%	0	0.0%	0	0.0%
	14th	0	0	0.0%	0	0.0%	0	0.0%	0	0.0%	0	0.0%	0	0.0%	0	0.0%	0	0.0%	0	0.0%	0	0.0%	0	0.0%	0	0.0%	0	0.0%	0	0.0%	0	0.0%	0	0.0%	0	0.0%
	21st	17	1	5.9%	0	0.0%	0	0.0%	3	17.6%	0	0.0%	0	0.0%	0	0.0%	0	0.0%	0	0.0%	8	47.1%	0	0.0%	0	0.0%	0	0.0%	0	0.0%	0	0.0%	0	0.0%	5	29.4%
	22nd	1	0	0.0%	0	0.0%	0	0.0%	0	0.0%	0	0.0%	0	0.0%	0	0.0%	0	0.0%	0	0.0%	0	0.0%	0	0.0%	0	0.0%	0	0.0%	0	0.0%	0	0.0%	0	0.0%	1	100.0%
Western Total		24	1	4.2%	0	0.0%	0	0.0%	5	20.8%	0	0.0%	0	0.0%	0	0.0%	0	0.0%	0	0.0%	8	33.3%	0	0.0%	0	0.0%	0	0.0%	0	0.0%	0	0.0%	10	41.7%		
Other Total		0	0	0.0%	0	0.0%	0	0.0%	0	0.0%	0	0.0%	0	0.0%	0	0.0%	0	0.0%	0	0.0%	0	0.0%	0	0.0%	0	0.0%	0	0.0%	0	0.0%	0	0.0%	0	0.0%		
Individual RD Totals		258	54	20.9%	27	10.5%	0	0.0%	33	12.8%	0	0.0%	4	1.6%	0	0.0%	0	0.0%	11	4.3%	36	14.0%	0	0.0%	0	0.0%	0	0.0%	0	0.0%	0	0.0%	2	0.8%	91	35.3%
Statewide Totals		258	81	31.4%	33	12.8%	0	0.0%	4	1.6%	0	0.0%	0	0.0%	0	0.0%	0	0.0%	47	18.2%	0	0.0%	0	0.0%	0	0.0%	2	0.8%	91	35.3%						

Central Region

CYDC Reason Detained by Judicial District May 2022 New Admits



■ CENTRAL REGION, 129 New Admits

■ 1st JD, 39 New Admits

■ 5th JD, 4 New Admits

■ 2nd JD, 38 New Admits

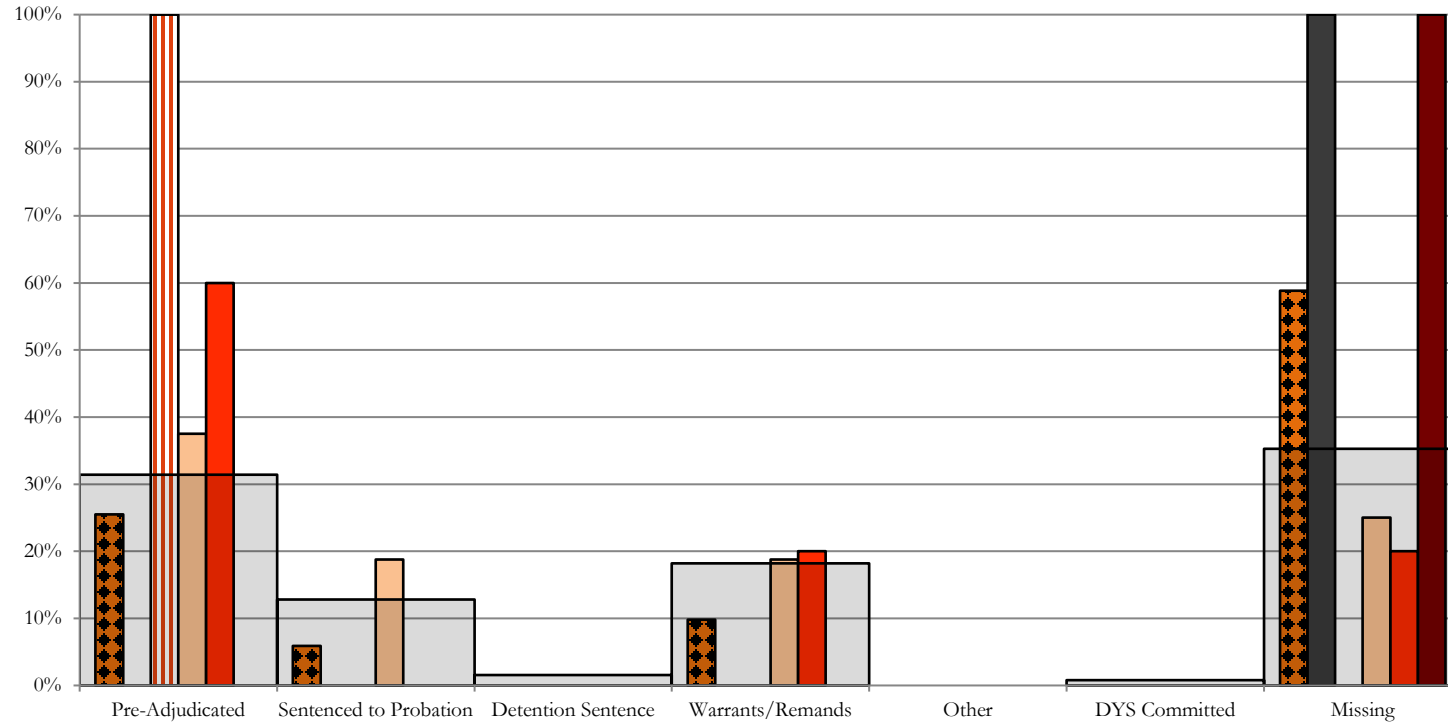
■ 18th JD, 48 New Admits

■ STATEWIDE, 258 New Admits

Northeast Region

CYDC Reason Detained by Judicial District

May 2022 New Admits

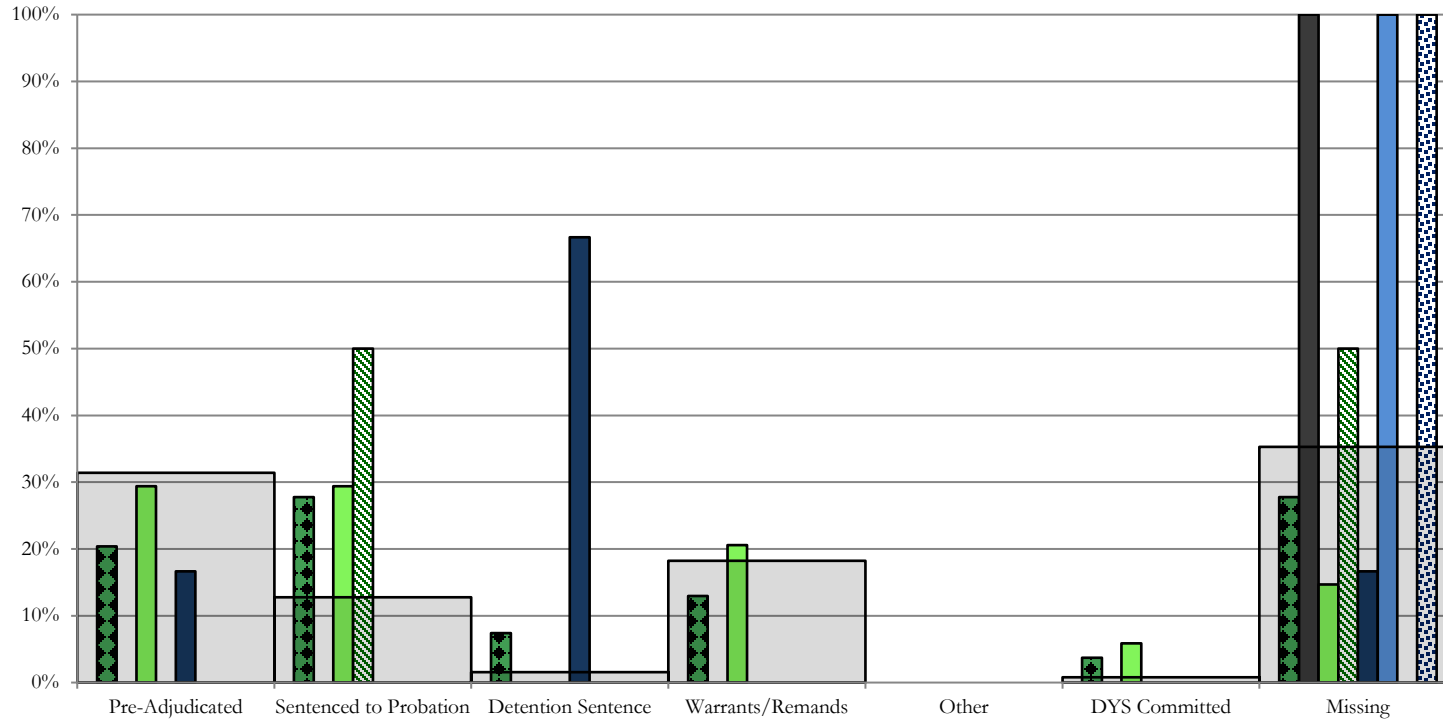


- NORTHEAST REGION, 51 New Admits
- 8th JD, 20 New Admits
- 13th JD, 1 New Admits
- 17th JD, 16 New Admits
- 19th JD, 10 New Admits
- 20th JD, 4 New Admits
- STATEWIDE, 258 New Admits

Southern Region

CYDC Reason Detained by Judicial District

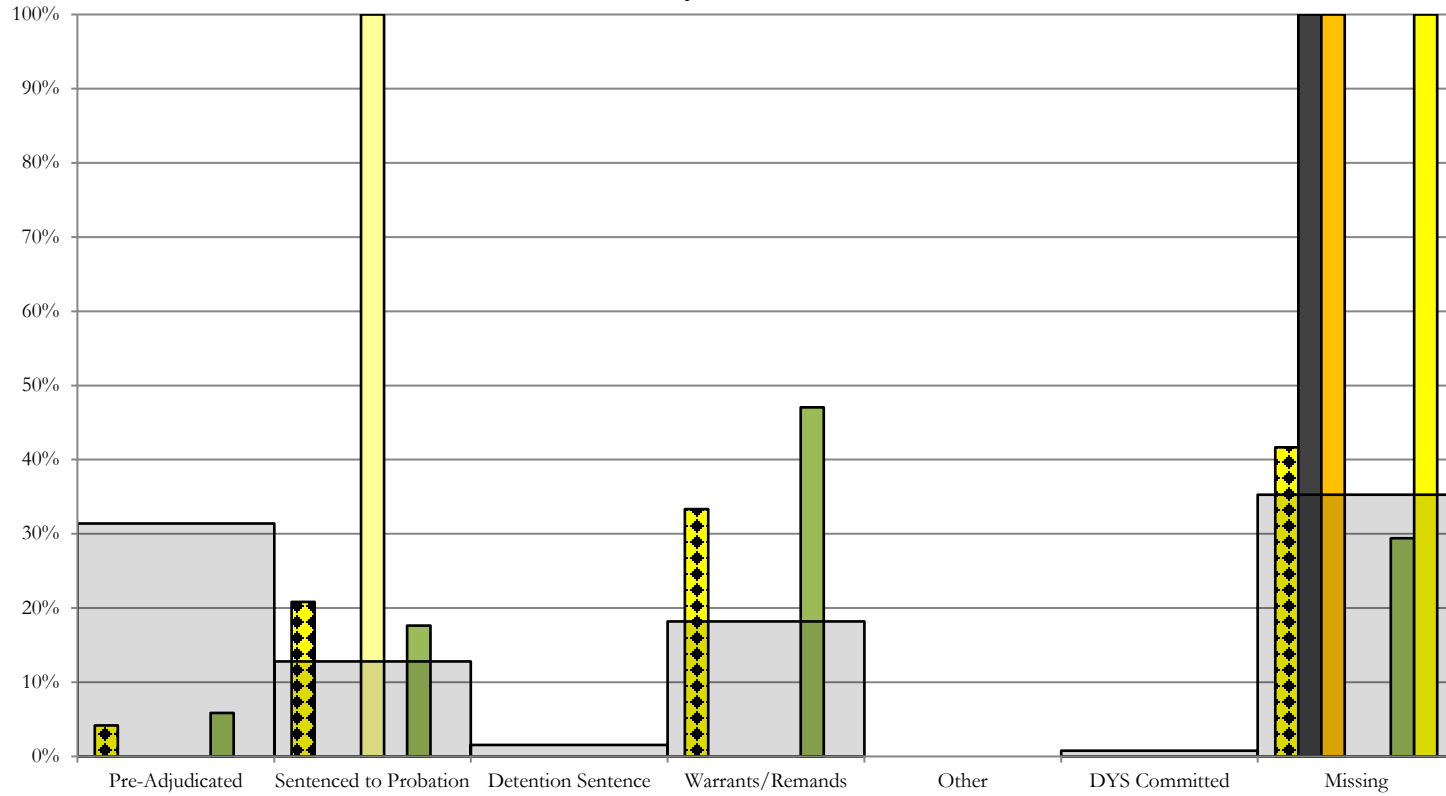
May 2022 New Admits



- SOUTHERN REGION, 54 New Admits
- 4th JD, 34 New Admits
- 11th JD, 6 New Admits
- 15th JD, 0 New Admits
- STATEWIDE, 258 New Admits
- 3rd JD, 2 New Admits
- 10th JD, 10 New Admits
- 12th JD, 1 New Admits
- 16th JD, 1 New Admits

Western Region

CYDC Reason Detained by Judicial District May 2022 New Admits



■ WESTERN REGION, 24 New Admits

■ 7th JD, 3 New Admits

■ 14th JD, 0 New Admits

■ 22nd JD, 1 New Admits

■ 6th JD, 1 New Admits

■ 9th JD, 2 New Admits

■ 21st JD, 17 New Admits

■ STATEWIDE, 258 New Admits

May 2022 CYDC Supplemental Report

DYS Detention Maximum Youth Served by Judicial District ¹

Region	JD	Detention Capacity	Detention ADP		Maximum Youth Served on a Single Day ^{2,3}			
			May 2022	YTD	May 2022		YTD	
					Number of Youth	% of Detention Capacity	Number of Youth	% of Detention Capacity
<i>Central Region</i>								
	1st	20	13.8	12.5	20	100.0%	20	100.0%
	2nd	35	23.4	26.5	37	105.7%	37	105.7%
	5th	2	0.3	0.5	3	150.0%	4	200.0%
	18th	37	33.7	28.6	39	105.4%	40	108.1%
Central Region		94	71.2	68.1	82	87.2%	85	90.4%
<i>Northeast Region</i>								
	8th	11	5.4	8.1	12	109.1%	14	127.3%
	13th	2	3.0	2.9	4	200.0%	7	350.0%
	17th	17	19.6	13.8	23	135.3%	25	147.1%
	19th	15	6.2	8.7	9	60.0%	13	86.7%
	20th	10	0.8	3.5	2	20.0%	8	80.0%
Northeast Region		55	35.1	37.0	43	78.2%	50	90.9%
<i>Southern Region</i>								
	3rd	2	0.4	1.0	1	50.0%	3	150.0%
	4th	27	23.0	28.2	28	103.7%	36	133.3%
	10th	10	8.4	6.9	10	100.0%	11	110.0%
	11th	2	0.6	0.8	2	100.0%	3	150.0%
	12th	2	1.5	0.8	3	150.0%	3	150.0%
	15th	2	1.5	0.6	2	100.0%	3	150.0%
	16th	2	1.2	1.7	2	100.0%	3	150.0%
Southern Region		47	36.5	40.1	43	91.5%	48	102.1%
<i>Western Region</i>								
	6th	2	0.4	1.4	2	100.0%	3	150.0%
	7th	3	2.6	2.3	4	133.3%	6	200.0%
	9th	2	2.9	0.7	4	200.0%	4	200.0%
	14th	2	0.2	0.4	1	50.0%	2	100.0%
	21st	8	7.8	7.7	12	150.0%	13	162.5%
	22nd	2	1.1	0.7	2	100.0%	4	200.0%
Western Region		19	15.0	13.1	19	100.0%	19	100.0%
<i>Missing JD or Multiple JDs</i>			0.1	0.9				
Statewide		215	157.9	159.2	177	82.3%	182	84.7%

¹ Maximum youth served is the highest number of youth in detention on a single day during the month or fiscal year.

² Regional figures are not the sum of judicial districts, but represent the maximum count on one day for the entire region.

³ State figures are not the sum of regional figures, but represent the maximum count on one day for the entire state.