

March 2022 FY 2021-2022 CYDC JDSAG SUPPLEMENTAL REPORT

Prepared by the Division of Youth Services (DYS)
Data Management & Analysis
April 29



COLORADO
Division of Youth Services
Office of Children, Youth & Families

March 2022 CYDC Supplemental Report

DYS Commitment ADP & New Commitments by Judicial District

Region	JD ¹	2022 Population Estimates ²	ADP ³		New Commitments		
			March 2022	YTD	March 2022	YTD	YTD Rate ⁴
<i>Central Region</i>							
	1st	52,891	11.8	13.5	1	7	1.3
	2nd	57,545	56.0	56.8	2	22	3.8
	5th	9,044	1.8	2.0	1	1	1.1
	18th	112,610	43.1	53.7	1	16	1.4
Central Total		232,090	112.8	126.0	5	46	2.0
<i>Northeast Region</i>							
	8th	35,419	11.0	11.8	1	12	3.4
	13th	8,500	1.0	1.0	0	0	0.0
	17th	68,397	15.6	21.7	1	7	1.0
	19th	38,823	17.8	23.7	2	10	2.6
	20th	29,677	7.0	6.7	0	3	1.0
Northeast Total		180,816	52.5	64.8	4	32	1.8
<i>Southern Region</i>							
	3rd	1,848	2.2	2.8	0	1	5.4
	4th	83,104	41.4	44.2	0	11	1.3
	10th	17,372	8.5	11.1	0	5	2.9
	11th	7,277	1.0	2.2	0	0	0.0
	12th	5,367	1.8	1.2	1	1	1.9
	15th	2,139	1.1	2.5	0	0	0.0
	16th	2,747	1.8	2.0	0	0	0.0
Southern Total		119,854	57.8	65.9	1	18	1.5
<i>Western Region</i>							
	6th	7,169	3.0	3.5	0	1	1.4
	7th	10,421	4.9	3.7	1	4	3.8
	9th	8,228	0.7	1.4	0	0	0.0
	14th	5,680	0.0	0.0	0	0	0.0
	21st	16,229	16.9	15.3	1	14	8.6
	22nd	2,972	0.6	2.5	0	1	3.4
Western Total		50,699	26.2	26.4	2	20	3.9
Statewide Total		583,459	249.2	283.2	12	116	2.0

¹ JD represents the judicial district in which the client was committed. Regional totals are a sum of their respective judicial districts. Regional totals reported here may differ slightly from those reported in the Monthly Population Report, where region is defined by active caseloads.

² Source: DOLA 2022 Estimates

³ Due to rounding, totals shown may not be an exact sum of the subtotals.

⁴ Per 10,000 youth in the population

March 2022 CYDC Supplemental Report

DYS Detention ADP and New Detention Admissions by Judicial District

Region	JD	2022 Population Estimates ¹	ADP		New Admits		YTD New Admit Rate ²
			March 2022	YTD	March 2022	YTD	
<i>Central Region</i>							
	1st	52,891	9.6	12.3	22	121	22.9
	2nd	57,545	21.6	27.2	36	275	47.8
	5th	9,044	1.0	0.4	3	12	13.3
	18th	112,610	33.5	27.6	37	287	25.5
Central Total		232,090	65.7	67.6	98	695	29.9
<i>Northeast Region</i>							
	8th	35,419	9.7	8.3	10	87	24.6
	13th	8,500	5.4	2.8	3	33	38.8
	17th	68,397	16.7	12.7	17	170	24.9
	19th	38,823	9.9	9.0	23	179	46.1
	20th	29,677	1.6	4.0	3	40	13.5
Northeast Total		180,816	43.3	36.8	56	509	28.2
<i>Southern Region</i>							
	3rd	1,848	0.7	1.1	1	14	75.8
	4th	83,104	29.7	28.9	36	319	38.4
	10th	17,372	8.6	6.8	7	74	42.6
	11th	7,277	0.8	0.8	4	20	27.5
	12th	5,367	0.2	0.8	0	6	11.2
	15th	2,139	0.0	0.5	0	7	32.7
	16th	2,747	0.6	1.8	2	15	54.6
Southern Total		119,854	40.7	40.7	50	455	38.0
<i>Western Region</i>							
	6th	7,169	1.0	1.6	0	5	7.0
	7th	10,421	0.9	2.4	1	16	15.4
	9th	8,228	1.7	0.3	2	8	9.7
	14th	5,680	0.0	0.3	1	5	8.8
	21st	16,229	7.6	7.9	18	132	81.3
	22nd	2,972	0.0	0.7	0	12	40.4
Western Total		50,699	11.2	13.2	22	178	35.1
<i>Missing JD or Multiple JDs ³</i>			<i>1.0</i>	<i>1.1</i>	<i>0</i>	<i>0</i>	
Statewide Total		583,459	161.8	159.3	226	1,837	31.5

¹ Source: DOLA 2022 Estimates

² Per 10,000 youth in the population

³ One newly detained youth in October 2021 was an out-of-state fugitive who was briefly detained until extradited to their home state.

March 2022 CYDC Supplemental Report

DYS Detention LOS by Judicial District				
Region	JD	YTD Detention Releases	YTD LOS (days)	LOS (days) Compared to State AVG
<i>Central Region</i>				
	1st	119	28.9	5.7
	2nd	279	24.3	1.1
	5th	11	7.5	-15.7
	18th	269	22.3	-0.9
Central Total		678	24.0	0.8
<i>Northeast Region</i>				
	8th	77	22.1	-1.1
	13th	30	13.0	-10.2
	17th	169	12.8	-10.4
	19th	170	11.5	-11.7
	20th	44	23.1	-0.1
Northeast Total		490	14.7	-8.5
<i>Southern Region</i>				
	3rd	14	15.1	-8.1
	4th	316	25.5	2.3
	10th	71	17.0	-6.2
	11th	22	9.4	-13.8
	12th	6	30.6	7.4
	15th	9	21.3	-1.9
	16th	16	30.9	7.7
Southern Total		454	23.3	0.1
<i>Western Region</i>				
	6th	4	45.7	22.5
	7th	18	42.2	19.0
	9th	6	5.2	-18.0
	14th	5	24.5	1.3
	21st	119	11.6	-11.6
	22nd	12	14.0	-9.2
Western Total		164	16.1	-7.1
Statewide Total		1,780	23.2	-

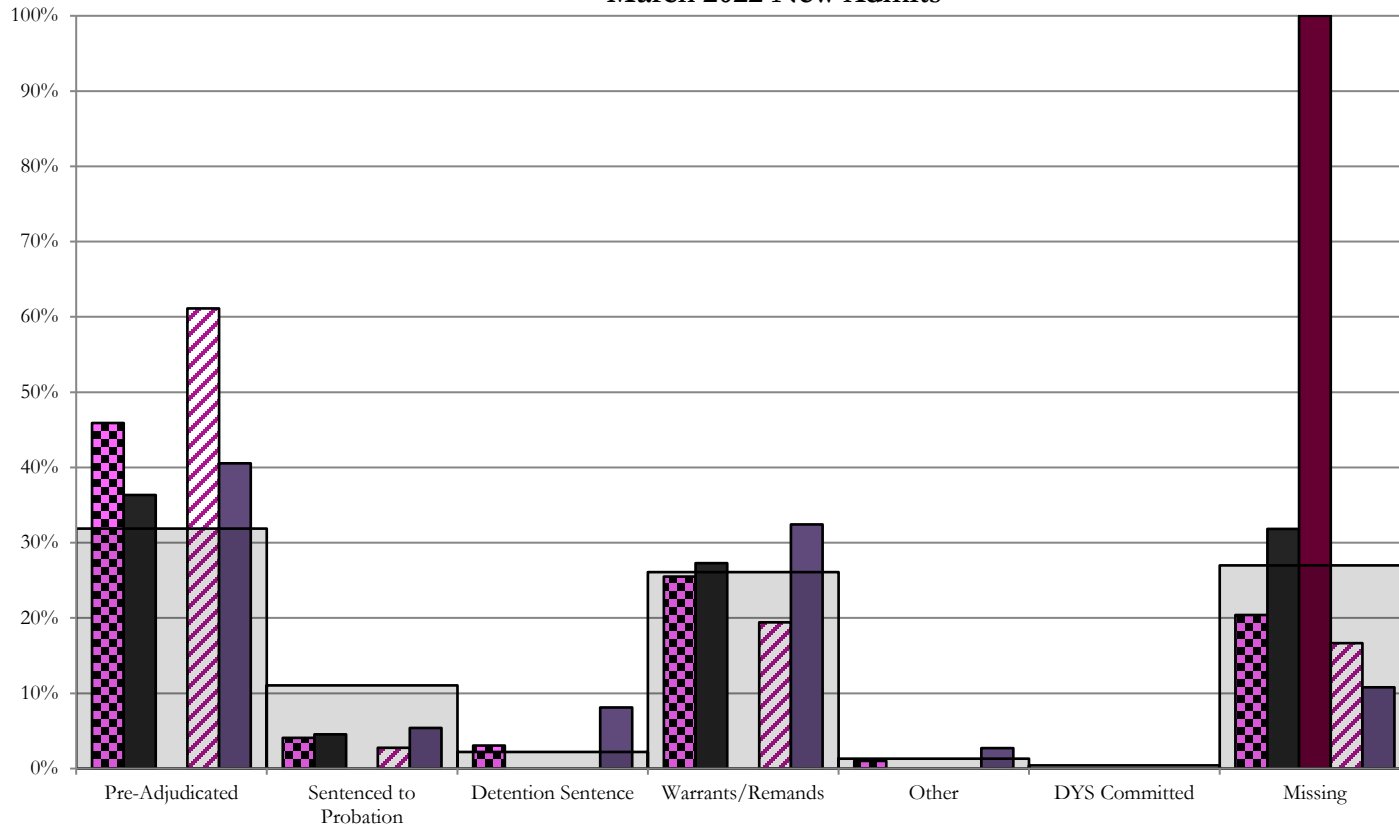
March 2022 CYDC JDSAG Supplemental Report

CYDC Reason Detained (RD) by Judicial District

Region	JD	Monthly New Admits	Pre-Adjudicated				Sentenced to Probation				Detention Sentence								Warrants/Remands				Other						DYS Committed		Missing					
			Felony		Misdemeanor		Technical Violator		New Charges		Probation Sentence		Detention Sentence		Valid Court Order (VCO) Truancy		Awaiting DSS (Social Services) Placement		Failure to Appear (FTA)		Failure to Comply (FTC)		Interstate Compact on Juveniles (ICJ) Hold		Immigration Hold		No Bond Hold		Out-of-Country Warrant		Institutional		Parole		Missing	
			#	%	#	%	#	%	#	%	#	%	#	%	#	%	#	%	#	%	#	%	#	%	#	%	#	%	#	%	#	%	#	%		
<i>Central Region</i>																																				
	1st	22	6	27.3%	2	9.1%	0	0.0%	1	4.5%	0	0.0%	0	0.0%	0	0.0%	0	0.0%	3	13.6%	3	13.6%	0	0.0%	0	0.0%	0	0.0%	0	0.0%	0	0.0%	0	0.0%	7	31.8%
	2nd	36	17	47.2%	5	13.9%	0	0.0%	1	2.8%	0	0.0%	0	0.0%	0	0.0%	0	0.0%	0	0.0%	7	19.4%	0	0.0%	0	0.0%	0	0.0%	0	0.0%	0	0.0%	0	0.0%	6	16.7%
	5th	3	0	0.0%	0	0.0%	0	0.0%	0	0.0%	0	0.0%	0	0.0%	0	0.0%	0	0.0%	0	0.0%	0	0.0%	0	0.0%	0	0.0%	0	0.0%	0	0.0%	0	0.0%	0	0.0%	3	100.0%
	18th	37	11	29.7%	4	10.8%	0	0.0%	2	5.4%	0	0.0%	3	8.1%	0	0.0%	0	0.0%	3	8.1%	9	24.3%	1	2.7%	0	0.0%	0	0.0%	0	0.0%	0	0.0%	0	0.0%	4	10.8%
Central Total		98	34	34.7%	11	11.2%	0	0.0%	4	4.1%	0	0.0%	3	3.1%	0	0.0%	0	0.0%	6	6.1%	19	19.4%	1	1.0%	0	0.0%	0	0.0%	0	0.0%	0	0.0%	0	0.0%	20	20.4%
<i>Northeast Region</i>																																				
	8th	10	0	0.0%	0	0.0%	0	0.0%	0	0.0%	0	0.0%	0	0.0%	0	0.0%	0	0.0%	0	0.0%	0	0.0%	0	0.0%	0	0.0%	0	0.0%	0	0.0%	0	0.0%	0	0.0%	10	100.0%
	13th	3	1	33.3%	1	33.3%	0	0.0%	0	0.0%	0	0.0%	0	0.0%	0	0.0%	0	0.0%	0	0.0%	1	33.3%	0	0.0%	0	0.0%	0	0.0%	0	0.0%	0	0.0%	0	0.0%	0	0.0%
	17th	17	5	29.4%	0	0.0%	0	0.0%	4	23.5%	0	0.0%	0	0.0%	0	0.0%	0	0.0%	1	5.9%	1	5.9%	2	11.8%	0	0.0%	0	0.0%	0	0.0%	0	0.0%	0	0.0%	4	23.5%
	19th	23	5	21.7%	3	13.0%	0	0.0%	1	4.3%	0	0.0%	0	0.0%	0	0.0%	0	0.0%	4	17.4%	6	26.1%	0	0.0%	0	0.0%	0	0.0%	0	0.0%	0	0.0%	0	0.0%	4	17.4%
	20th	3	0	0.0%	0	0.0%	0	0.0%	0	0.0%	0	0.0%	0	0.0%	0	0.0%	0	0.0%	0	0.0%	0	0.0%	0	0.0%	0	0.0%	0	0.0%	0	0.0%	0	0.0%	0	0.0%	3	100.0%
Northeast Total		56	11	19.6%	4	7.1%	0	0.0%	5	8.9%	0	0.0%	0	0.0%	0	0.0%	0	0.0%	5	8.9%	8	14.3%	2	3.6%	0	0.0%	0	0.0%	0	0.0%	0	0.0%	0	0.0%	21	37.5%
<i>Southern Region</i>																																				
	3rd	1	0	0.0%	0	0.0%	0	0.0%	0	0.0%	0	0.0%	0	0.0%	0	0.0%	0	0.0%	1	100.0%	0	0.0%	0	0.0%	0	0.0%	0	0.0%	0	0.0%	0	0.0%	0	0.0%	0	0.0%
	4th	36	11	30.6%	0	0.0%	0	0.0%	10	27.8%	0	0.0%	0	0.0%	0	0.0%	0	0.0%	1	2.8%	9	25.0%	0	0.0%	0	0.0%	0	0.0%	0	0.0%	0	0.0%	1	2.8%	4	11.1%
	10th	7	0	0.0%	0	0.0%	1	14.3%	2	28.6%	0	0.0%	1	14.3%	0	0.0%	0	0.0%	1	14.3%	1	14.3%	0	0.0%	0	0.0%	0	0.0%	0	0.0%	0	0.0%	0	0.0%	1	14.3%
	11th	4	0	0.0%	0	0.0%	0	0.0%	0	0.0%	0	0.0%	1	25.0%	0	0.0%	0	0.0%	0	0.0%	0	0.0%	0	0.0%	0	0.0%	0	0.0%	0	0.0%	0	0.0%	0	0.0%	3	75.0%
	12th	0	0	0.0%	0	0.0%	0	0.0%	0	0.0%	0	0.0%	0	0.0%	0	0.0%	0	0.0%	0	0.0%	0	0.0%	0	0.0%	0	0.0%	0	0.0%	0	0.0%	0	0.0%	0	0.0%	0	0.0%
	15th	0	0	0.0%	0	0.0%	0	0.0%	0	0.0%	0	0.0%	0	0.0%	0	0.0%	0	0.0%	0	0.0%	0	0.0%	0	0.0%	0	0.0%	0	0.0%	0	0.0%	0	0.0%	0	0.0%	0	0.0%
	16th	2	0	0.0%	0	0.0%	0	0.0%	0	0.0%	0	0.0%	0	0.0%	0	0.0%	0	0.0%	0	0.0%	0	0.0%	0	0.0%	0	0.0%	0	0.0%	0	0.0%	0	0.0%	2	100.0%		
Southern Total		50	11	22.0%	0	0.0%	1	2.0%	12	24.0%	0	0.0%	2	4.0%	0	0.0%	0	0.0%	3	6.0%	10	20.0%	0	0.0%	0	0.0%	0	0.0%	0	0.0%	0	0.0%	1	2.0%	10	20.0%
<i>Western Region</i>																																				
	6th	0	0	0.0%	0	0.0%	0	0.0%	0	0.0%	0	0.0%	0	0.0%	0	0.0%	0	0.0%	0	0.0%	0	0.0%	0	0.0%	0	0.0%	0	0.0%	0	0.0%	0	0.0%	0	0.0%	0	0.0%
	7th	1	0	0.0%	0	0.0%	0	0.0%	0	0.0%	0	0.0%	0	0.0%	0	0.0%	0	0.0%	0	0.0%	0	0.0%	0	0.0%	0	0.0%	0	0.0%	0	0.0%	0	0.0%	0	0.0%	1	100.0%
	9th	2	0	0.0%	0	0.0%	0	0.0%	0	0.0%	0	0.0%	0	0.0%	0	0.0%	0	0.0%	0	0.0%	0	0.0%	0	0.0%	0	0.0%	0	0.0%	0	0.0%	0	0.0%	0	0.0%	2	100.0%
	14th	1	0	0.0%	0	0.0%	0	0.0%	0	0.0%	0	0.0%	0	0.0%	0	0.0%	0	0.0%	0	0.0%	0	0.0%	0	0.0%	0	0.0%	0	0.0%	0	0.0%	0	0.0%	0	0.0%	1	100.0%
	21st	18	1	5.6%	0	0.0%	0	0.0%	3	16.7%	0	0.0%	0	0.0%	0	0.0%	0	0.0%	0	0.0%	8	44.4%	0	0.0%	0	0.0%	0	0.0%	0	0.0%	0	0.0%	0	0.0%	6	33.3%
	22nd	0	0	0.0%	0	0.0%	0	0.0%	0	0.0%	0	0.0%	0	0.0%	0	0.0%	0	0.0%	0	0.0%	0	0.0%	0	0.0%	0	0.0%	0	0.0%	0	0.0%	0	0.0%	0	0.0%	0	0.0%
Western Total		22	1	4.5%	0	0.0%	0	0.0%	3	13.6%	0	0.0%	0	0.0%	0	0.0%	0	0.0%	0	0.0%	8	36.4%	0	0.0%	0	0.0%	0	0.0%	0	0.0%	0	0.0%	0	0.0%	10	45.5%
Other Total		0	0	0.0%	0	0.0%	0	0.0%	0	0.0%	0	0.0%	0	0.0%	0	0.0%	0	0.0%	0	0.0%	0	0.0%	0	0.0%	0	0.0%	0	0.0%	0	0.0%	0	0.0%	0	0.0%	0	0.0%
Individual RD Totals		226	57	25.2%	15	6.6%	1	0.4%	24	10.6%	0	0.0%	5	2.2%	0	0.0%	0	0.0%	14	6.2%	45	19.9%	3	1.3%	0	0.0%	0	0.0%	0	0.0%	0	0.0%	1	0.4%	61	27.0%
Statewide Totals		226	72	31.9%	25	11.1%			5				2.2%					59	26.1%			3			1.3%			1			0.4%	61	27.0%			

Central Region

CYDC Reason Detained by Judicial District March 2022 New Admits



■ CENTRAL REGION, 98 New Admits

■ 1st JD, 22 New Admits

■ 5th JD, 3 New Admits

■ 2nd JD, 36 New Admits

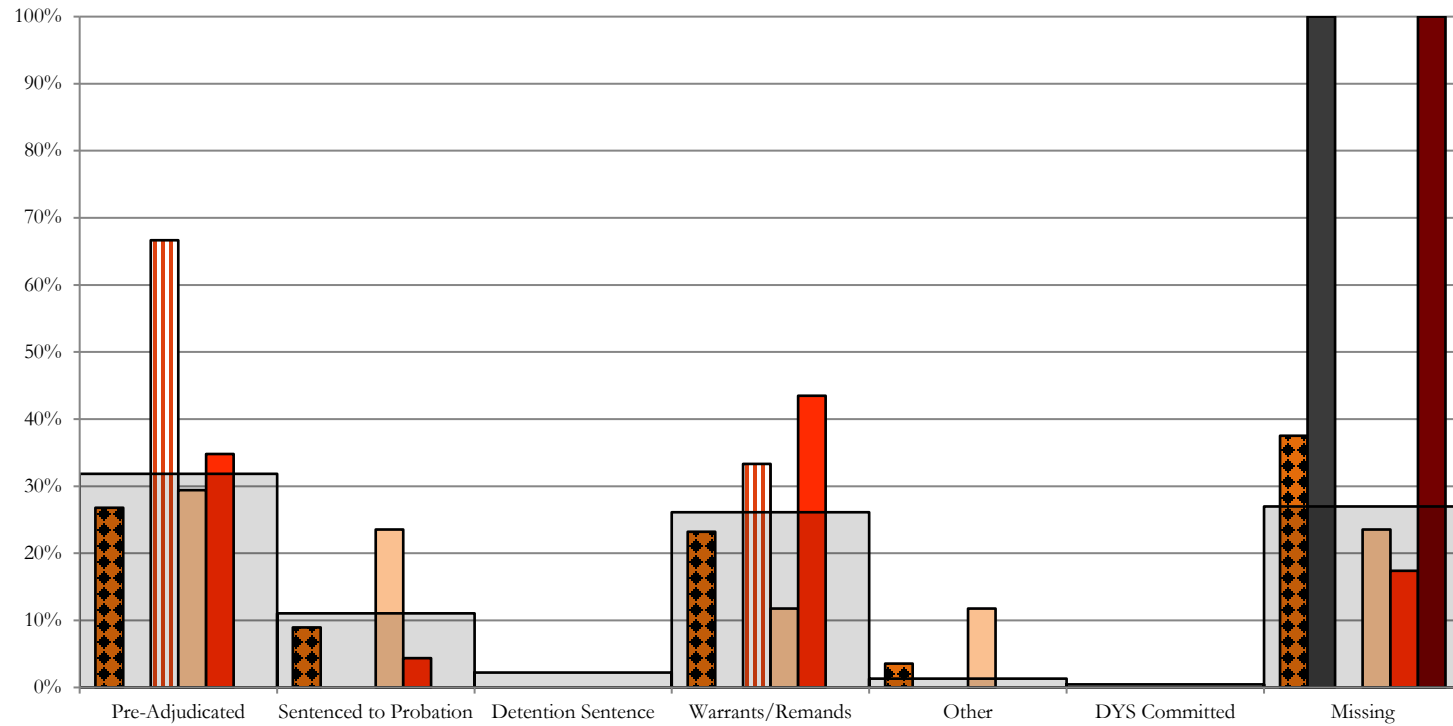
■ 18th JD, 37 New Admits

■ STATEWIDE, 226 New Admits

Northeast Region

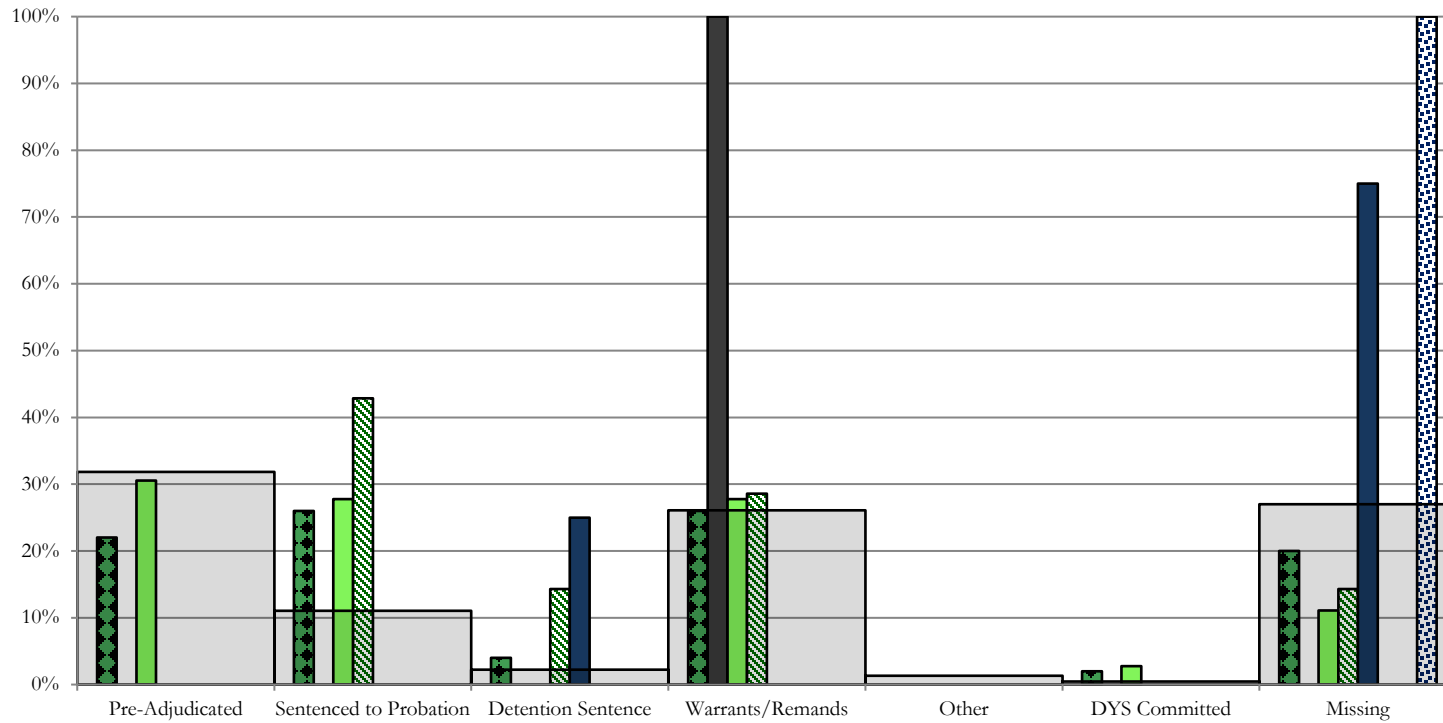
CYDC Reason Detained by Judicial District

March 2022 New Admits



- NORTHEAST REGION, 56 New Admits
- 8th JD, 10 New Admits
- 13th JD, 3 New Admits
- 17th JD, 17 New Admits
- 19th JD, 23 New Admits
- 20th JD, 3 New Admits
- STATEWIDE, 226 New Admits

Southern Region CYDC Reason Detained by Judicial District March 2022 New Admits

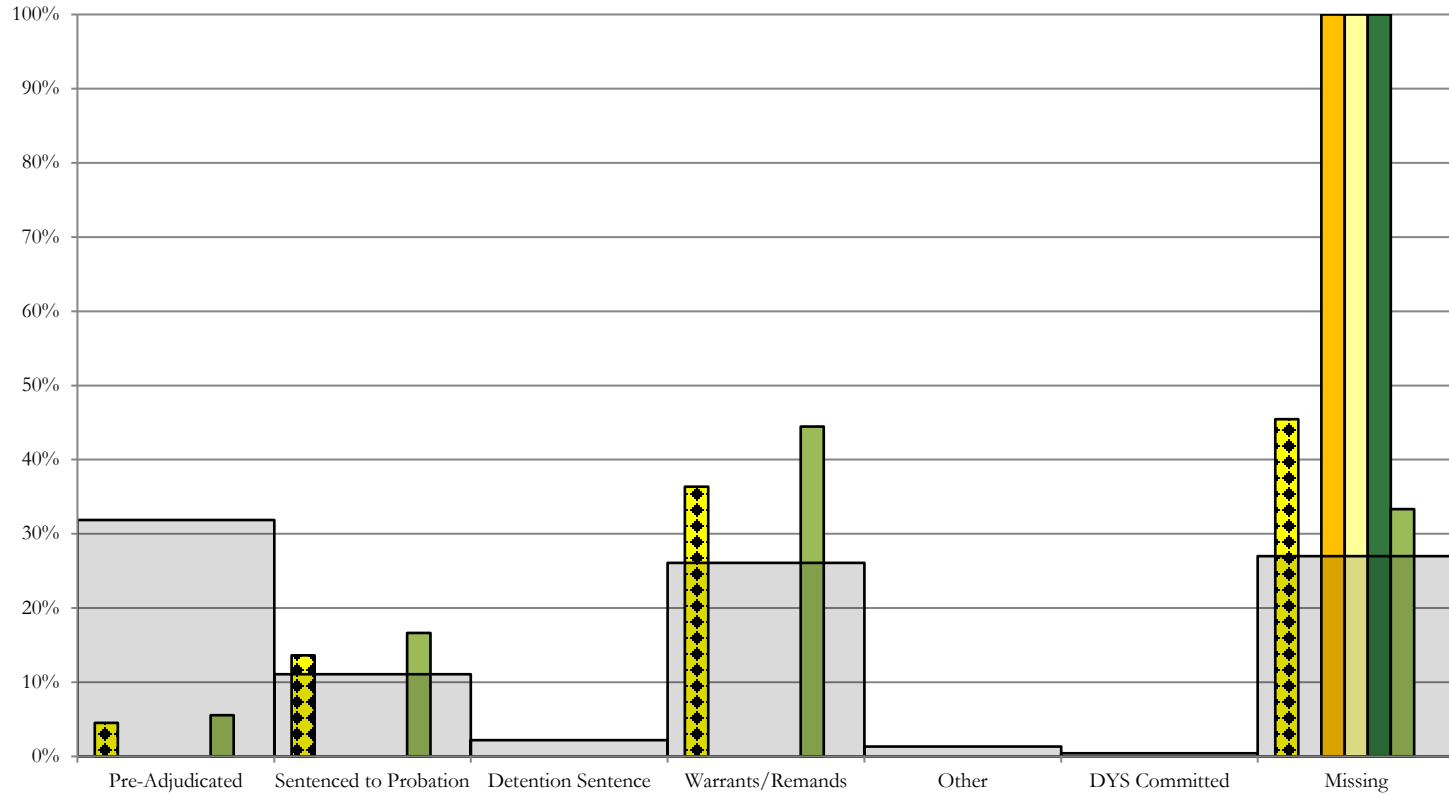


- SOUTHERN REGION, 50 New Admits
- 4th JD, 36 New Admits
- 11th JD, 4 New Admits
- 15th JD, 0 New Admits
- STATEWIDE, 226 New Admits
- 3rd JD, 1 New Admits
- 10th JD, 7 New Admits
- 12th JD, 0 New Admits
- 16th JD, 2 New Admits

Western Region

CYDC Reason Detained by Judicial District

March 2022 New Admits



■ WESTERN REGION, 22 New Admits

■ 7th JD, 1 New Admits

■ 14th JD, 1 New Admits

■ 22nd JD, 0 New Admits

■ 6th JD, 0 New Admits

■ 9th JD, 2 New Admits

■ 21st JD, 18 New Admits

■ STATEWIDE, 226 New Admits

March 2022 CYDC Supplemental Report

DYS Detention Maximum Youth Served by Judicial District ¹

Region	JD	Detention Capacity	Detention ADP		Maximum Youth Served on a Single Day ^{2,3}			
			March 2022	YTD	March 2022		YTD	
					Number of Youth	% of Detention Capacity	Number of Youth	% of Detention Capacity
<i>Central Region</i>								
	1st	20	9.6	12.3	14	70.0%	20	100.0%
	2nd	35	21.6	27.2	27	77.1%	36	102.9%
	5th	2	1.0	0.4	3	150.0%	4	200.0%
	18th	37	33.5	27.6	36	97.3%	37	100.0%
Central Region		94	65.7	67.6	70	74.5%	85	90.4%
<i>Northeast Region</i>								
	8th	11	9.7	8.3	12	109.1%	14	127.3%
	13th	2	5.4	2.8	7	350.0%	7	350.0%
	17th	17	16.7	12.7	21	123.5%	23	135.3%
	19th	15	9.9	9.0	13	86.7%	13	86.7%
	20th	10	1.6	4.0	2	20.0%	8	80.0%
Northeast Region		55	43.3	36.8	49	89.1%	49	89.1%
<i>Southern Region</i>								
	3rd	2	0.7	1.1	1	50.0%	3	150.0%
	4th	27	29.7	28.9	32	118.5%	36	133.3%
	10th	10	8.6	6.8	10	100.0%	11	110.0%
	11th	2	0.8	0.8	2	100.0%	3	150.0%
	12th	2	0.2	0.8	0	0.0%	2	100.0%
	15th	2	0.0	0.5	0	0.0%	3	150.0%
	16th	2	0.6	1.8	2	100.0%	3	150.0%
Southern Region		47	40.7	40.7	44	93.6%	48	102.1%
<i>Western Region</i>								
	6th	2	1.0	1.6	0	0.0%	3	150.0%
	7th	3	0.9	2.4	1	33.3%	6	200.0%
	9th	2	1.7	0.3	2	100.0%	2	100.0%
	14th	2	0.0	0.3	1	50.0%	2	100.0%
	21st	8	7.6	7.9	12	150.0%	13	162.5%
	22nd	2	0.0	0.7	0	0.0%	4	200.0%
Western Region		19	11.2	13.2	16	84.2%	19	100.0%
<i>Missing JD or Multiple JDs</i>			1.0	1.1				
Statewide		215	161.8	159.3	170	79.1%	182	84.7%

¹ Maximum youth served is the highest number of youth in detention on a single day during the month or fiscal year.

² Regional figures are not the sum of judicial districts, but represent the maximum count on one day for the entire region.

³ State figures are not the sum of regional figures, but represent the maximum count on one day for the entire state.