

February 2022 FY 2021-2022 CYDC JDSAG SUPPLEMENTAL REPORT

Prepared by the Division of Youth Services (DYS)
Data Management & Analysis
March 17



COLORADO
Division of Youth Services
Office of Children, Youth & Families

February 2022 CYDC Supplemental Report

DYS Commitment ADP & New Commitments by Judicial District

Region	JD ¹	2022 Population Estimates ²	ADP ³		New Commitments		
			February 2022	YTD	February 2022	YTD	YTD Rate ⁴
<i>Central Region</i>							
	1st	52,891	10.4	13.7	1	5	0.9
	2nd	57,545	56.6	56.9	1	20	3.5
	5th	9,044	1.0	2.0	0	0	0.0
	18th	112,610	47.9	54.9	0	15	1.3
Central Total		232,090	115.9	127.6	2	40	1.7
<i>Northeast Region</i>							
	8th	35,419	8.4	11.9	1	11	3.1
	13th	8,500	1.0	1.0	0	0	0.0
	17th	68,397	17.8	22.5	0	6	0.9
	19th	38,823	19.6	24.5	2	8	2.1
	20th	29,677	6.7	6.6	1	3	1.0
Northeast Total		180,816	53.5	66.4	4	28	1.5
<i>Southern Region</i>							
	3rd	1,848	2.0	2.8	0	1	5.4
	4th	83,104	40.9	44.6	4	11	1.3
	10th	17,372	10.0	11.5	0	5	2.9
	11th	7,277	1.6	2.3	0	0	0.0
	12th	5,367	1.0	1.1	0	0	0.0
	15th	2,139	2.0	2.7	0	0	0.0
	16th	2,747	2.0	2.0	0	0	0.0
Southern Total		119,854	59.5	67.0	4	17	1.4
<i>Western Region</i>							
	6th	7,169	3.0	3.6	0	1	1.4
	7th	10,421	5.0	3.6	0	3	2.9
	9th	8,228	0.0	1.5	0	0	0.0
	14th	5,680	0.0	0.0	0	0	0.0
	21st	16,229	17.9	15.1	1	13	8.0
	22nd	2,972	1.6	2.7	0	1	3.4
Western Total		50,699	27.5	26.6	1	18	3.6
Statewide Total		583,459	256.3	287.6	11	103	1.8

¹ JD represents the judicial district in which the client was committed. Regional totals are a sum of their respective judicial districts. Regional totals reported here may differ slightly from those reported in the Monthly Population Report, where region is defined by active caseloads.

² Source: DOLA 2022 Estimates

³ Due to rounding, totals shown may not be an exact sum of the subtotals.

⁴ Per 10,000 youth in the population

February 2022 CYDC Supplemental Report

DYS Detention ADP and New Detention Admissions by Judicial District

Region	JD	2022 Population Estimates ¹	ADP		New Admits		
			February 2022	YTD	February 2022	YTD	YTD New Admit Rate ²
<i>Central Region</i>							
	1st	52,891	9.6	12.7	12	99	18.7
	2nd	57,545	24.8	28.0	26	240	41.7
	5th	9,044	0.0	0.4	0	9	10.0
	18th	112,610	31.4	26.9	32	250	22.2
Central Total		232,090	65.8	67.9	70	598	25.8
<i>Northeast Region</i>							
	8th	35,419	8.6	8.1	11	77	21.7
	13th	8,500	3.5	2.5	3	30	35.3
	17th	68,397	16.2	12.2	18	152	22.2
	19th	38,823	8.7	8.9	19	156	40.2
	20th	29,677	2.8	4.3	1	37	12.5
Northeast Total		180,816	39.8	35.9	52	452	25.0
<i>Southern Region</i>							
	3rd	1,848	1.1	1.1	1	13	70.3
	4th	83,104	27.0	28.8	31	283	34.1
	10th	17,372	8.5	6.5	7	67	38.6
	11th	7,277	0.1	0.8	2	16	22.0
	12th	5,367	1.4	0.8	1	6	11.2
	15th	2,139	0.1	0.5	0	7	32.7
	16th	2,747	1.7	2.0	1	13	47.3
Southern Total		119,854	40.0	40.7	43	405	33.8
<i>Western Region</i>							
	6th	7,169	1.9	1.7	0	5	7.0
	7th	10,421	0.4	2.6	3	15	14.4
	9th	8,228	0.0	0.1	0	6	7.3
	14th	5,680	0.0	0.4	0	4	7.0
	21st	16,229	7.4	7.9	12	114	70.2
	22nd	2,972	0.3	0.8	1	12	40.4
Western Total		50,699	10.0	13.4	16	156	30.8
<i>Missing JD or Multiple JDs ³</i>			<i>1.2</i>	<i>1.1</i>	<i>0</i>	<i>0</i>	
Statewide Total		583,459	156.7	159.0	181	1,611	27.6

¹ Source: DOLA 2022 Estimates

² Per 10,000 youth in the population

³ One newly detained youth in October 2021 was an out-of-state fugitive who was briefly detained until extradited to their home state.

February 2022 CYDC Supplemental Report

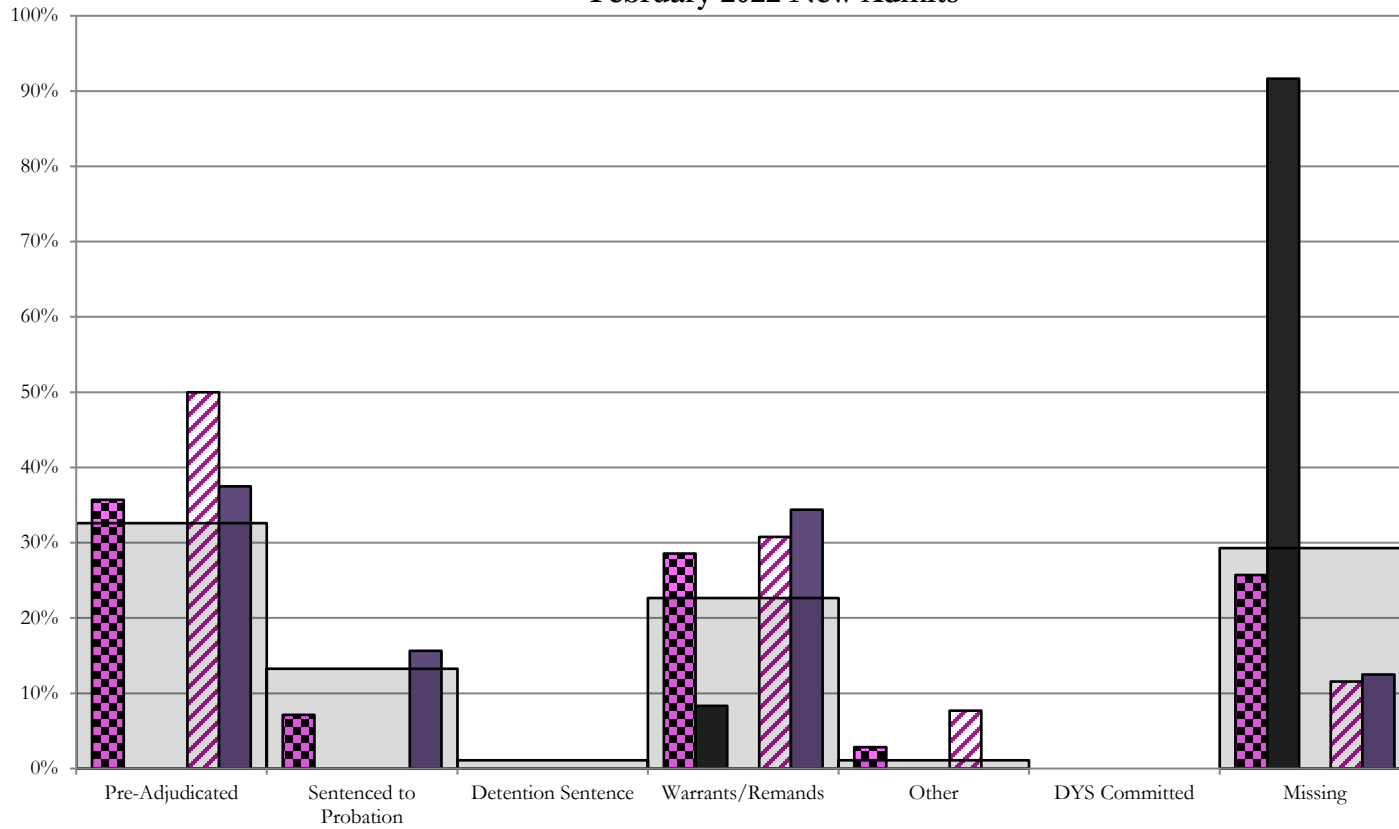
DYS Detention LOS by Judicial District				
Region	JD	YTD Detention Releases	YTD LOS (days)	LOS (days) Compared to State AVG
<i>Central Region</i>				
	1st	101	29.3	6.0
	2nd	240	26.6	3.3
	5th	9	8.9	-14.4
	18th	232	22.1	-1.3
Central Total		582	25.0	1.6
<i>Northeast Region</i>				
	8th	68	23.2	-0.1
	13th	29	12.4	-10.9
	17th	148	11.4	-11.9
	19th	147	11.1	-12.3
	20th	41	24.4	1.1
Northeast Total		433	14.5	-8.9
<i>Southern Region</i>				
	3rd	13	14.2	-9.1
	4th	282	25.4	2.1
	10th	62	16.6	-6.7
	11th	18	10.9	-12.5
	12th	5	30.9	7.6
	15th	9	21.3	-2.1
	16th	13	28.2	4.8
Southern Total		402	23.1	-0.2
<i>Western Region</i>				
	6th	4	45.7	22.3
	7th	17	44.6	21.2
	9th	6	5.2	-18.1
	14th	5	24.5	1.1
	21st	97	8.9	-14.4
	22nd	11	8.5	-14.8
Western Total		140	14.6	-8.7
Statewide Total		1,550	23.3	-

February 2022 CYDC JDSAG Supplemental Report

CYDC Reason Detained (RD) by Judicial District

Region	JD	Monthly New Admits	Pre-Adjudicated				Sentenced to Probation				Detention Sentence				Warrants/Remands				Other				DYS Committed		Missing											
			Felony		Misdemeanor		Technical Violator		New Charges		Probation Sentence		Detention Sentence		Valid Court Order (VCO) Truancy		Awaiting DSS (Social Services) Placement		Failure to Appear (FTA)		Failure to Comply (FTC)		Interstate Compact on Juveniles (ICJ) Hold		Immigration Hold		No Bond Hold		Out-of-Country Warrant		Institutional		Parole		Missing	
			#	%	#	%	#	%	#	%	#	%	#	%	#	%	#	%	#	%	#	%	#	%	#	%	#	%	#	%	#	%	#	%		
<i>Central Region</i>																																				
	1st	12	0	0.0%	0	0.0%	0	0.0%	0	0.0%	0	0.0%	0	0.0%	0	0.0%	0	0.0%	1	8.3%	0	0.0%	0	0.0%	0	0.0%	0	0.0%	0	0.0%	0	0.0%	0	0.0%	11	91.7%
	2nd	26	9	34.6%	4	15.4%	0	0.0%	0	0.0%	0	0.0%	0	0.0%	0	0.0%	0	0.0%	1	3.8%	7	26.9%	2	7.7%	0	0.0%	0	0.0%	0	0.0%	0	0.0%	0	0.0%	3	11.5%
	5th	0	0	0.0%	0	0.0%	0	0.0%	0	0.0%	0	0.0%	0	0.0%	0	0.0%	0	0.0%	0	0.0%	0	0.0%	0	0.0%	0	0.0%	0	0.0%	0	0.0%	0	0.0%	0	0.0%	0	0.0%
	18th	32	8	25.0%	4	12.5%	0	0.0%	5	15.6%	0	0.0%	0	0.0%	0	0.0%	0	0.0%	1	3.1%	10	31.3%	0	0.0%	0	0.0%	0	0.0%	0	0.0%	0	0.0%	0	0.0%	4	12.5%
Central Total		70	17	24.3%	8	11.4%	0	0.0%	5	7.1%	0	0.0%	0	0.0%	0	0.0%	0	0.0%	3	4.3%	17	24.3%	2	2.9%	0	0.0%	0	0.0%	0	0.0%	0	0.0%	0	0.0%	18	25.7%
<i>Northeast Region</i>																																				
	8th	11	0	0.0%	0	0.0%	0	0.0%	0	0.0%	0	0.0%	0	0.0%	0	0.0%	0	0.0%	0	0.0%	0	0.0%	0	0.0%	0	0.0%	0	0.0%	0	0.0%	0	0.0%	0	0.0%	11	100.0%
	13th	3	1	33.3%	1	33.3%	0	0.0%	0	0.0%	0	0.0%	0	0.0%	0	0.0%	0	0.0%	0	0.0%	1	33.3%	0	0.0%	0	0.0%	0	0.0%	0	0.0%	0	0.0%	0	0.0%	0	0.0%
	17th	18	2	11.1%	4	22.2%	0	0.0%	4	22.2%	0	0.0%	1	5.6%	0	0.0%	0	0.0%	1	5.6%	1	5.6%	0	0.0%	0	0.0%	0	0.0%	0	0.0%	0	0.0%	0	0.0%	5	27.8%
	19th	19	6	31.6%	2	10.5%	0	0.0%	0	0.0%	0	0.0%	0	0.0%	0	0.0%	0	0.0%	0	0.0%	6	31.6%	0	0.0%	0	0.0%	0	0.0%	0	0.0%	0	0.0%	0	0.0%	5	26.3%
	20th	1	0	0.0%	0	0.0%	0	0.0%	0	0.0%	0	0.0%	1	100.0%	0	0.0%	0	0.0%	0	0.0%	0	0.0%	0	0.0%	0	0.0%	0	0.0%	0	0.0%	0	0.0%	0	0.0%	0	0.0%
Northeast Total		52	9	17.3%	7	13.5%	0	0.0%	4	7.7%	0	0.0%	2	3.8%	0	0.0%	0	0.0%	1	1.9%	8	15.4%	0	0.0%	0	0.0%	0	0.0%	0	0.0%	0	0.0%	0	0.0%	21	40.4%
<i>Southern Region</i>																																				
	3rd	1	0	0.0%	0	0.0%	0	0.0%	0	0.0%	0	0.0%	0	0.0%	0	0.0%	0	0.0%	0	0.0%	0	0.0%	0	0.0%	0	0.0%	0	0.0%	0	0.0%	0	0.0%	0	0.0%	1	100.0%
	4th	31	14	45.2%	3	9.7%	0	0.0%	8	25.8%	0	0.0%	0	0.0%	0	0.0%	0	0.0%	0	0.0%	5	16.1%	0	0.0%	0	0.0%	0	0.0%	0	0.0%	0	0.0%	0	0.0%	1	3.2%
	10th	7	0	0.0%	0	0.0%	0	0.0%	3	42.9%	0	0.0%	0	0.0%	0	0.0%	0	0.0%	0	0.0%	1	14.3%	0	0.0%	0	0.0%	0	0.0%	0	0.0%	0	0.0%	0	0.0%	3	42.9%
	11th	2	0	0.0%	0	0.0%	0	0.0%	0	0.0%	0	0.0%	0	0.0%	0	0.0%	0	0.0%	0	0.0%	0	0.0%	0	0.0%	0	0.0%	0	0.0%	0	0.0%	0	0.0%	0	0.0%	2	100.0%
	12th	1	0	0.0%	0	0.0%	0	0.0%	1	100.0%	0	0.0%	0	0.0%	0	0.0%	0	0.0%	0	0.0%	0	0.0%	0	0.0%	0	0.0%	0	0.0%	0	0.0%	0	0.0%	0	0.0%	0	0.0%
	15th	0	0	0.0%	0	0.0%	0	0.0%	0	0.0%	0	0.0%	0	0.0%	0	0.0%	0	0.0%	0	0.0%	0	0.0%	0	0.0%	0	0.0%	0	0.0%	0	0.0%	0	0.0%	0	0.0%	0	0.0%
	16th	1	0	0.0%	0	0.0%	0	0.0%	0	0.0%	0	0.0%	0	0.0%	0	0.0%	0	0.0%	0	0.0%	0	0.0%	0	0.0%	0	0.0%	0	0.0%	0	0.0%	0	0.0%	1	100.0%		
Southern Total		43	14	32.6%	3	7.0%	0	0.0%	12	27.9%	0	0.0%	0	0.0%	0	0.0%	0	0.0%	0	0.0%	6	14.0%	0	0.0%	0	0.0%	0	0.0%	0	0.0%	0	0.0%	0	0.0%	8	18.6%
<i>Western Region</i>																																				
	6th	0	0	0.0%	0	0.0%	0	0.0%	0	0.0%	0	0.0%	0	0.0%	0	0.0%	0	0.0%	0	0.0%	0	0.0%	0	0.0%	0	0.0%	0	0.0%	0	0.0%	0	0.0%	0	0.0%	0	0.0%
	7th	3	0	0.0%	0	0.0%	0	0.0%	0	0.0%	0	0.0%	0	0.0%	0	0.0%	0	0.0%	0	0.0%	0	0.0%	0	0.0%	0	0.0%	0	0.0%	0	0.0%	0	0.0%	0	0.0%	3	100.0%
	9th	0	0	0.0%	0	0.0%	0	0.0%	0	0.0%	0	0.0%	0	0.0%	0	0.0%	0	0.0%	0	0.0%	0	0.0%	0	0.0%	0	0.0%	0	0.0%	0	0.0%	0	0.0%	0	0.0%	0	0.0%
	14th	0	0	0.0%	0	0.0%	0	0.0%	0	0.0%	0	0.0%	0	0.0%	0	0.0%	0	0.0%	0	0.0%	0	0.0%	0	0.0%	0	0.0%	0	0.0%	0	0.0%	0	0.0%	0	0.0%	0	0.0%
	21st	12	1	8.3%	0	0.0%	0	0.0%	3	25.0%	0	0.0%	0	0.0%	0	0.0%	0	0.0%	0	0.0%	6	50.0%	0	0.0%	0	0.0%	0	0.0%	0	0.0%	0	0.0%	0	0.0%	2	16.7%
	22nd	1	0	0.0%	0	0.0%	0	0.0%	0	0.0%	0	0.0%	0	0.0%	0	0.0%	0	0.0%	0	0.0%	0	0.0%	0	0.0%	0	0.0%	0	0.0%	0	0.0%	0	0.0%	1	100.0%		
Western Total		16	1	6.3%	0	0.0%	0	0.0%	3	18.8%	0	0.0%	0	0.0%	0	0.0%	0	0.0%	0	0.0%	6	37.5%	0	0.0%	0	0.0%	0	0.0%	0	0.0%	0	0.0%	6	37.5%		
Other Total		0	0	0.0%	0	0.0%	0	0.0%	0	0.0%	0	0.0%	0	0.0%	0	0.0%	0	0.0%	0	0.0%	0	0.0%	0	0.0%	0	0.0%	0	0.0%	0	0.0%	0	0.0%	0	0.0%		
Individual RD Totals		181	41	22.7%	18	9.9%	0	0.0%	24	13.3%	0	0.0%	2	1.1%	0	0.0%	0	0.0%	4	2.2%	37	20.4%	2	1.1%	0	0.0%	0	0.0%	0	0.0%	0	0.0%	53	29.3%		
Statewide Totals		181	59	32.6%	24	13.3%	0	0.0%	2	1.1%	0	0.0%	0	0.0%	0	0.0%	0	0.0%	41	22.7%	2	1.1%	0	0.0%	0	0.0%	0	0.0%	0	0.0%	53	29.3%				

Central Region CYDC Reason Detained by Judicial District February 2022 New Admits



■ CENTRAL REGION, 70 New Admits

■ 5th JD, 0 New Admits

■ 18th JD, 32 New Admits

■ 1st JD, 12 New Admits

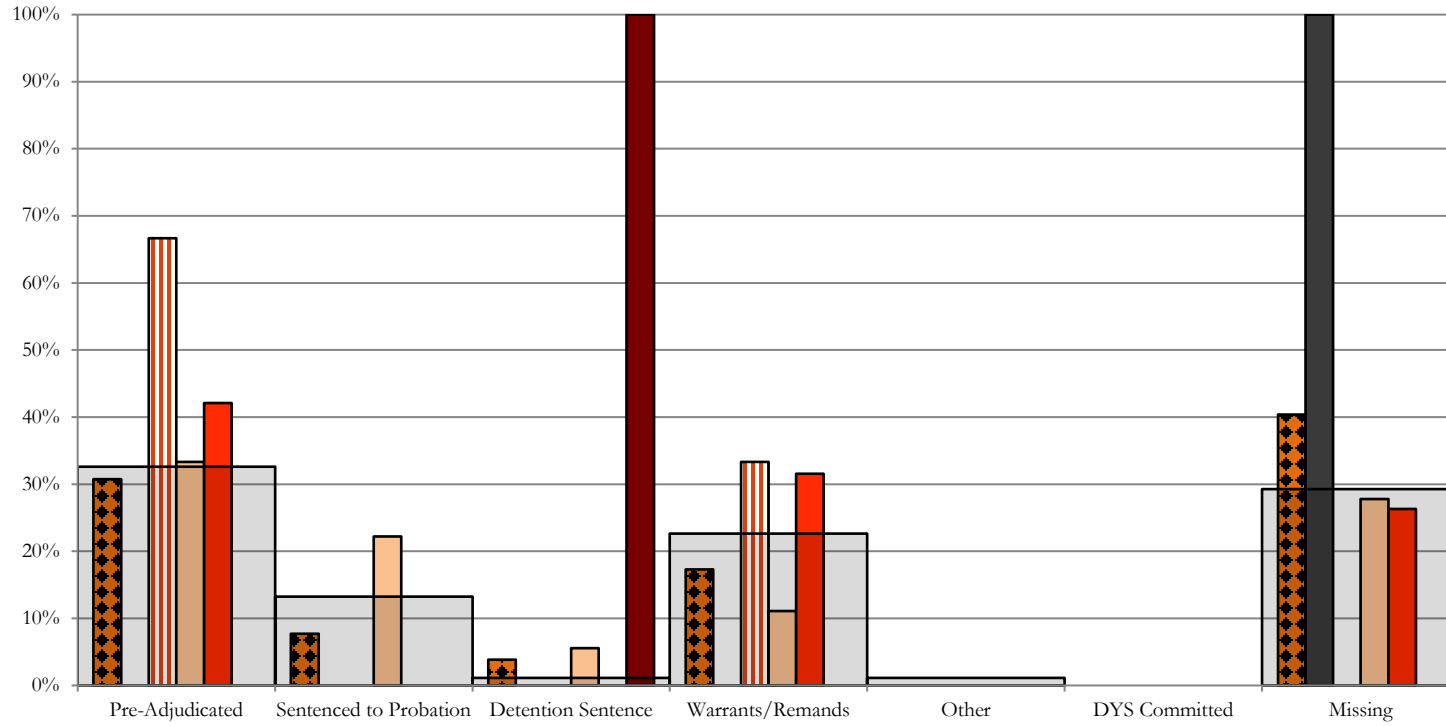
■ 2nd JD, 26 New Admits

■ STATEWIDE, 181 New Admits

Northeast Region

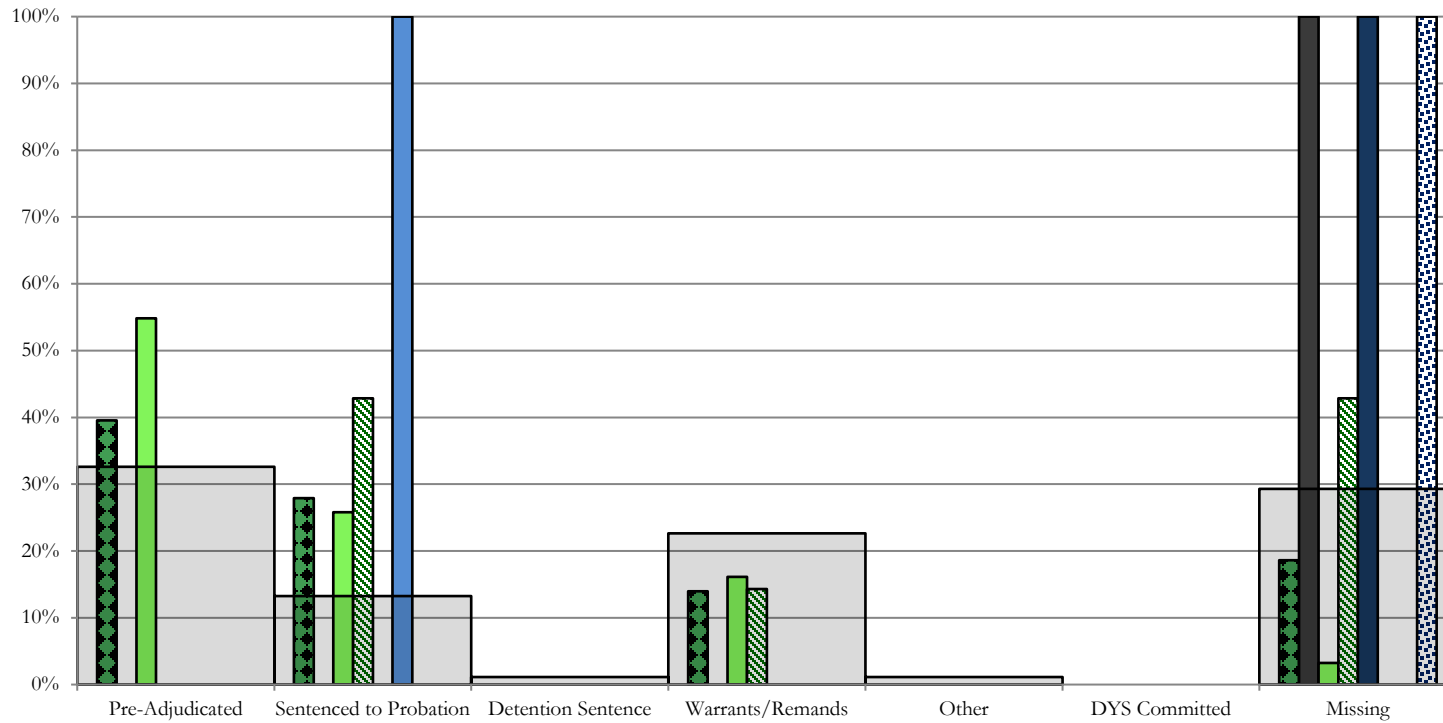
CYDC Reason Detained by Judicial District

February 2022 New Admits



-
-
-
-

Southern Region CYDC Reason Detained by Judicial District February 2022 New Admits



■ SOUTHERN REGION, 43 New Admits

■ 4th JD, 31 New Admits

■ 11th JD, 2 New Admits

■ 15th JD, 0 New Admits

■ STATEWIDE, 181 New Admits

■ 3rd JD, 1 New Admits

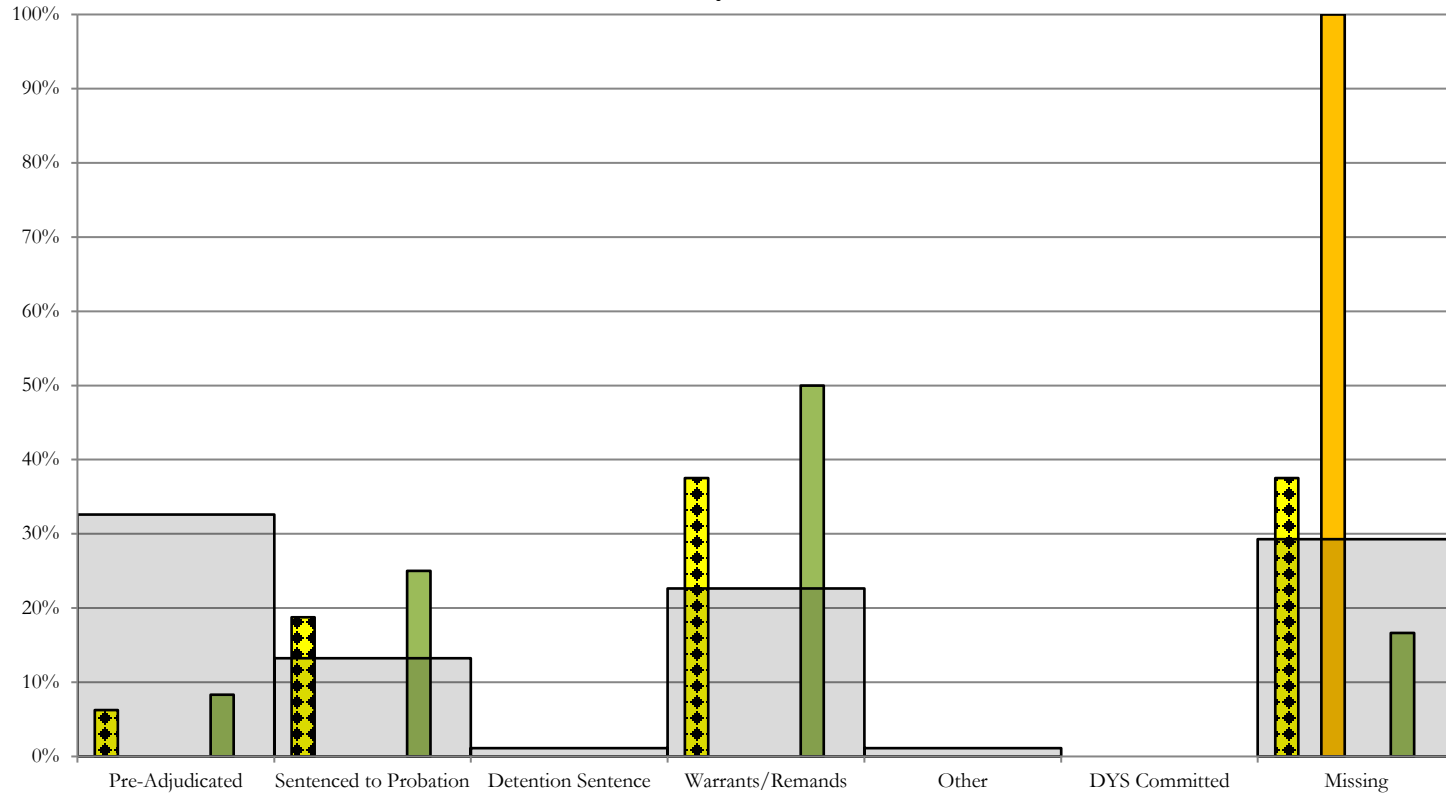
■ 10th JD, 7 New Admits

■ 12th JD, 1 New Admits

■ 16th JD, 1 New Admits

Western Region

CYDC Reason Detained by Judicial District February 2022 New Admits



■ WESTERN REGION, 16 New Admits

■ 7th JD, 3 New Admits

■ 14th JD, 0 New Admits

■ 22nd JD, 1 New Admits

■ 6th JD, 0 New Admits

■ 9th JD, 0 New Admits

■ 21st JD, 12 New Admits

■ STATEWIDE, 181 New Admits

February 2022 CYDC Supplemental Report

DYS Detention Maximum Youth Served by Judicial District ¹

Region	JD	Detention Capacity	Detention ADP		Maximum Youth Served on a Single Day ^{2,3}			
			February 2022	YTD	February 2022		YTD	
					Number of Youth	% of Detention Capacity	Number of Youth	% of Detention Capacity
<i>Central Region</i>								
	1st	20	9.6	12.7	14	70.0%	20	100.0%
	2nd	35	24.8	28.0	29	82.9%	36	102.9%
	5th	2	0.0	0.4	0	0.0%	4	200.0%
	18th	37	31.4	26.9	36	97.3%	37	100.0%
Central Region		94	65.8	67.9	68	72.3%	85	90.4%
<i>Northeast Region</i>								
	8th	11	8.6	8.1	13	118.2%	14	127.3%
	13th	2	3.5	2.5	4	200.0%	7	350.0%
	17th	17	16.2	12.2	19	111.8%	21	123.5%
	19th	15	8.7	8.9	11	73.3%	13	86.7%
	20th	10	2.8	4.3	3	30.0%	8	80.0%
Northeast Region		55	39.8	35.9	46	83.6%	49	89.1%
<i>Southern Region</i>								
	3rd	2	1.1	1.1	2	100.0%	3	150.0%
	4th	27	27.0	28.8	32	118.5%	36	133.3%
	10th	10	8.5	6.5	10	100.0%	11	110.0%
	11th	2	0.1	0.8	1	50.0%	3	150.0%
	12th	2	1.4	0.8	2	100.0%	2	100.0%
	15th	2	0.1	0.5	2	100.0%	3	150.0%
	16th	2	1.7	2.0	2	100.0%	3	150.0%
Southern Region		47	40.0	40.7	45	95.7%	48	102.1%
<i>Western Region</i>								
	6th	2	1.9	1.7	2	100.0%	3	150.0%
	7th	3	0.4	2.6	2	66.7%	6	200.0%
	9th	2	0.0	0.1	0	0.0%	2	100.0%
	14th	2	0.0	0.4	0	0.0%	2	100.0%
	21st	8	7.4	7.9	11	137.5%	13	162.5%
	22nd	2	0.3	0.8	1	50.0%	4	200.0%
Western Region		19	10.0	13.4	14	73.7%	19	100.0%
<i>Missing JD or Multiple JDs</i>			1.2	1.1				
Statewide		215	156.7	159.0	166	77.2%	182	84.7%

¹ Maximum youth served is the highest number of youth in detention on a single day during the month or fiscal year.

² Regional figures are not the sum of judicial districts, but represent the maximum count on one day for the entire region.

³ State figures are not the sum of regional figures, but represent the maximum count on one day for the entire state.