

# January 2022 FY 2021-2022 CYDC JDSAG SUPPLEMENTAL REPORT

---

Prepared by the Division of Youth Services (DYS)  
Data Management & Analysis  
February 25



**CO L O R A D O**  
**Division of Youth Services**  
Office of Children, Youth & Families

# January 2022 CYDC Supplemental Report

## DYS Commitment ADP & New Commitments by Judicial District

Region	JD <sup>1</sup>	2022 Population Estimates <sup>2</sup>	ADP <sup>3</sup>		New Commitments		
			January 2022	YTD	January 2022	YTD	YTD Rate <sup>4</sup>
<i>Central Region</i>							
	1st	52,891	10.4	14.2	0	4	0.8
	2nd	57,545	56.6	57.2	5	19	3.3
	5th	9,044	1.0	2.2	0	0	0.0
	18th	112,610	48.0	55.7	2	15	1.3
<b>Central Total</b>		<b>232,090</b>	<b>115.9</b>	<b>129.2</b>	<b>7</b>	<b>38</b>	<b>1.6</b>
<i>Northeast Region</i>							
	8th	35,419	10.3	12.3	1	10	2.8
	13th	8,500	1.0	1.0	0	0	0.0
	17th	68,397	20.4	23.1	0	6	0.9
	19th	38,823	19.2	25.1	2	6	1.5
	20th	29,677	6.0	6.6	0	2	0.7
<b>Northeast Total</b>		<b>180,816</b>	<b>56.8</b>	<b>68.1</b>	<b>3</b>	<b>24</b>	<b>1.3</b>
<i>Southern Region</i>							
	3rd	1,848	2.0	3.0	0	1	5.4
	4th	83,104	42.6	45.1	1	7	0.8
	10th	17,372	12.0	12.1	0	5	2.9
	11th	7,277	3.0	2.6	0	0	0.0
	12th	5,367	1.0	1.2	0	0	0.0
	15th	2,139	2.0	2.8	0	0	0.0
	16th	2,747	2.0	2.0	0	0	0.0
<b>Southern Total</b>		<b>119,854</b>	<b>64.6</b>	<b>68.7</b>	<b>1</b>	<b>13</b>	<b>1.1</b>
<i>Western Region</i>							
	6th	7,169	3.0	3.6	0	1	1.4
	7th	10,421	5.2	3.4	1	3	2.9
	9th	8,228	0.6	1.7	0	0	0.0
	14th	5,680	0.0	0.0	0	0	0.0
	21st	16,229	17.0	14.8	1	12	7.4
	22nd	2,972	1.2	2.9	0	1	3.4
<b>Western Total</b>		<b>50,699</b>	<b>27.0</b>	<b>26.4</b>	<b>2</b>	<b>17</b>	<b>3.4</b>
<b>Statewide Total</b>		<b>583,459</b>	<b>264.4</b>	<b>292.5</b>	<b>13</b>	<b>92</b>	<b>1.6</b>

<sup>1</sup> JD represents the judicial district in which the client was committed. Regional totals are a sum of their respective judicial districts. Regional totals reported here may differ slightly from those reported in the Monthly Population Report, where region is defined by active caseloads.

<sup>2</sup> Source: DOLA 2022 Estimates

<sup>3</sup> Due to rounding, totals shown may not be an exact sum of the subtotals.

<sup>4</sup> Per 10,000 youth in the population

# January 2022 CYDC Supplemental Report

## DYS Detention ADP and New Detention Admissions by Judicial District

Region	JD	2022 Population Estimates <sup>1</sup>	ADP		New Admits		
			January 2022	YTD	January 2022	YTD	YTD New Admit Rate <sup>2</sup>
<i>Central Region</i>							
	1st	52,891	12.2	13.0	9	86	16.3
	2nd	57,545	26.4	27.6	24	215	37.4
	5th	9,044	0.0	0.4	0	9	10.0
	18th	112,610	32.1	26.3	29	218	19.4
<b>Central Total</b>		<b>232,090</b>	<b>70.7</b>	<b>67.3</b>	<b>62</b>	<b>528</b>	<b>22.7</b>
<i>Northeast Region</i>							
	8th	35,419	8.8	8.0	14	66	18.6
	13th	8,500	4.4	2.4	0	27	31.8
	17th	68,397	12.5	11.7	22	134	19.6
	19th	38,823	9.0	8.9	19	137	35.3
	20th	29,677	3.9	4.5	2	36	12.1
<b>Northeast Total</b>		<b>180,816</b>	<b>38.6</b>	<b>35.4</b>	<b>57</b>	<b>400</b>	<b>22.1</b>
<i>Southern Region</i>							
	3rd	1,848	1.3	1.1	3	12	64.9
	4th	83,104	28.9	29.1	17	251	30.2
	10th	17,372	8.8	6.3	8	60	34.5
	11th	7,277	0.3	0.9	2	14	19.2
	12th	5,367	1.4	0.8	2	5	9.3
	15th	2,139	0.1	0.6	4	7	32.7
	16th	2,747	2.2	2.0	0	12	43.7
<b>Southern Total</b>		<b>119,854</b>	<b>42.9</b>	<b>40.7</b>	<b>36</b>	<b>361</b>	<b>30.1</b>
<i>Western Region</i>							
	6th	7,169	2.1	1.6	1	5	7.0
	7th	10,421	0.5	2.9	1	12	11.5
	9th	8,228	0.1	0.2	1	6	7.3
	14th	5,680	0.0	0.4	0	4	7.0
	21st	16,229	7.2	8.0	17	102	62.9
	22nd	2,972	0.0	0.8	0	11	37.0
<b>Western Total</b>		<b>50,699</b>	<b>9.9</b>	<b>13.9</b>	<b>20</b>	<b>140</b>	<b>27.6</b>
<i>Missing JD or Multiple JDs <sup>3</sup></i>			2.9	1.0	0	0	
<b>Statewide Total</b>		<b>583,459</b>	<b>165.0</b>	<b>158.4</b>	<b>175</b>	<b>1,429</b>	<b>24.5</b>

<sup>1</sup> Source: DOLA 2022 Estimates

<sup>2</sup> Per 10,000 youth in the population

<sup>3</sup> One newly detained youth in October 2021 was an out-of-state fugitive who was briefly detained until extradited to their home state.

# January 2022 CYDC Supplemental Report

DYS Detention LOS by Judicial District				
Region	JD	YTD Detention Releases	YTD LOS (days)	LOS (days) Compared to State AVG
<i>Central Region</i>				
	1st	89	26.1	4.0
	2nd	213	22.8	0.7
	5th	9	8.9	-13.2
	18th	202	20.7	-1.3
<b>Central Total</b>		<b>513</b>	<b>22.3</b>	<b>0.2</b>
<i>Northeast Region</i>				
	8th	56	23.9	1.8
	13th	27	10.5	-11.6
	17th	132	12.0	-10.1
	19th	133	11.8	-10.3
	20th	37	23.2	1.2
<b>Northeast Total</b>		<b>385</b>	<b>14.6</b>	<b>-7.5</b>
<i>Southern Region</i>				
	3rd	11	13.8	-8.3
	4th	257	24.6	2.5
	10th	56	12.7	-9.3
	11th	16	12.1	-10.0
	12th	4	37.7	15.6
	15th	5	35.5	13.4
	16th	12	22.0	-0.1
<b>Southern Total</b>		<b>361</b>	<b>22.1</b>	<b>0.0</b>
<i>Western Region</i>				
	6th	2	1.5	-20.6
	7th	14	53.4	31.4
	9th	6	5.2	-16.9
	14th	5	24.5	2.4
	21st	86	8.7	-13.4
	22nd	10	8.4	-13.6
<b>Western Total</b>		<b>123</b>	<b>14.1</b>	<b>-8.0</b>
<b>Statewide Total</b>		<b>1,374</b>	<b>22.1</b>	<b>-</b>

## January 2022 CYDC Supplemental Report

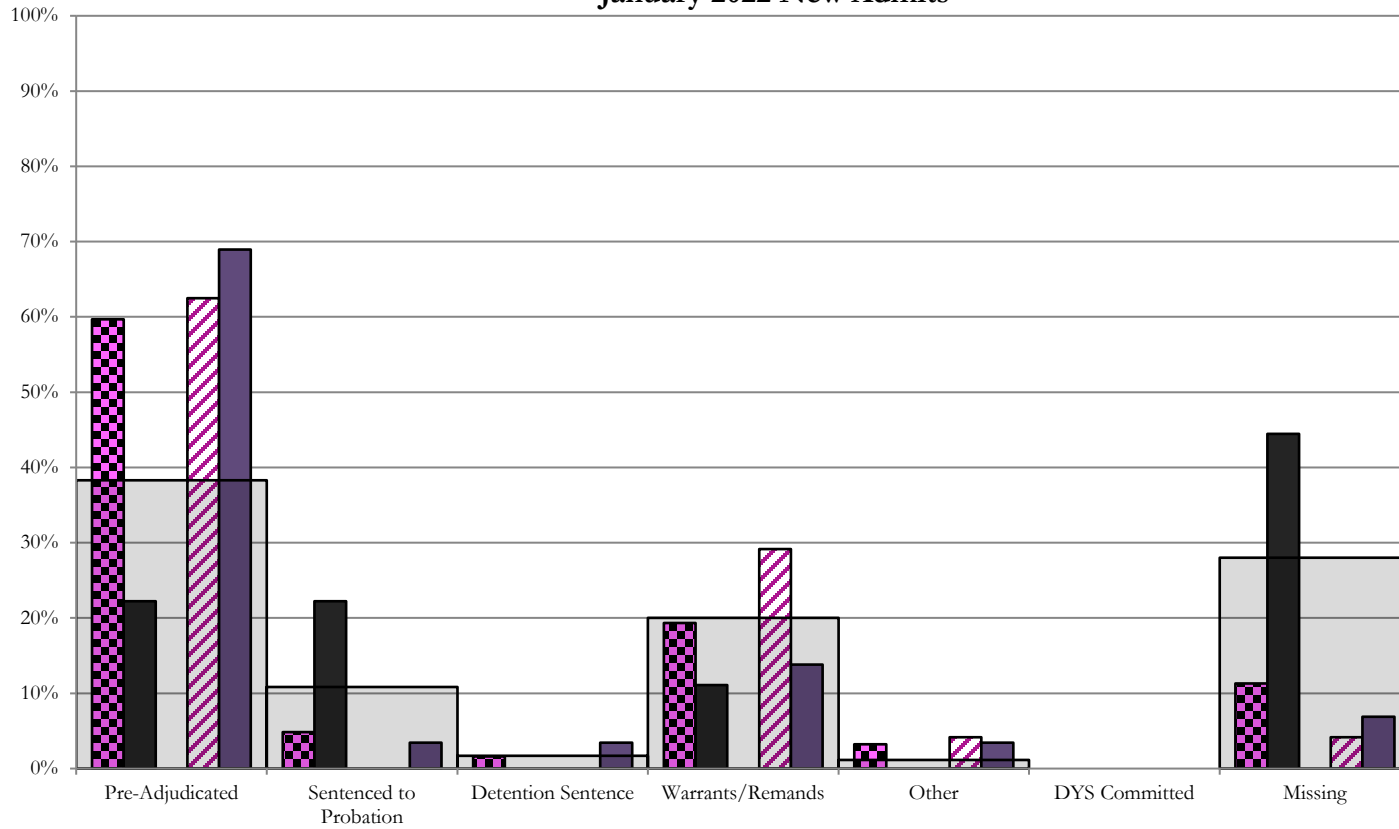
### YTD DYS Detention ADP & Ethnicity by Judicial District

Region	JD	Anglo-American		African-American		Hispanic / Latino		Native-American		Asian-American		Other		TOTAL	
		ADP	%	ADP	%	ADP	%	ADP	%	ADP	%	ADP	%	ADP	%
<b>Central</b>															
	1st	6.2	47.2%	1.9	14.9%	4.9	37.5%	0.0	0.1%	0.0	0.1%	0.0	0.3%	13.1	100%
	2nd	5.5	20.0%	7.2	26.2%	13.6	49.3%	0.1	0.2%	1.1	4.0%	0.1	0.3%	27.6	100%
	5th	0.1	29.6%	0.0	0.0%	0.3	70.4%	0.0	0.0%	0.0	0.0%	0.0	0.0%	0.4	100%
	18th	5.1	19.2%	12.4	47.2%	7.1	26.9%	0.0	0.0%	0.5	1.8%	1.3	5.0%	26.3	100%
<b>Central Total</b>		<b>16.9</b>	<b>29.0%</b>	<b>21.6</b>	<b>22.1%</b>	<b>25.8</b>	<b>46.0%</b>	<b>0.1</b>	<b>0.1%</b>	<b>1.6</b>	<b>1.5%</b>	<b>1.4</b>	<b>1.4%</b>	<b>67.3</b>	<b>100%</b>
<b>Northeast</b>															
	8th	5.4	66.7%	0.9	10.9%	1.7	20.7%	0.0	0.0%	0.1	0.8%	0.1	0.8%	8.0	100%
	13th	1.1	44.9%	1.0	41.9%	0.3	13.2%	0.0	0.0%	0.0	0.0%	0.0	0.0%	2.4	100%
	17th	3.7	32.0%	0.9	8.0%	6.7	57.8%	0.0	0.0%	0.0	0.3%	0.2	1.9%	11.7	100%
	19th	5.2	58.9%	0.3	3.2%	3.3	37.3%	0.1	0.5%	0.0	0.0%	0.0	0.0%	8.9	100%
	20th	2.4	53.5%	0.6	12.7%	1.2	25.7%	0.0	0.5%	0.0	0.0%	0.3	7.6%	4.5	100%
<b>Northeast Total</b>		<b>17.8</b>	<b>51.2%</b>	<b>3.7</b>	<b>15.3%</b>	<b>13.2</b>	<b>30.9%</b>	<b>0.1</b>	<b>0.2%</b>	<b>0.1</b>	<b>0.2%</b>	<b>0.6</b>	<b>2.1%</b>	<b>35.5</b>	<b>100%</b>
<b>Southern</b>															
	3rd	0.5	44.9%	0.0	0.0%	0.6	55.1%	0.0	0.0%	0.0	0.0%	0.0	0.0%	1.1	100%
	4th	13.9	47.6%	8.9	30.5%	5.9	20.3%	0.0	0.0%	0.0	0.0%	0.4	1.4%	29.1	100%
	10th	0.9	14.8%	0.1	1.2%	5.2	83.3%	0.0	0.0%	0.0	0.0%	0.0	0.7%	6.3	100%
	11th	0.8	87.0%	0.0	0.0%	0.1	13.0%	0.0	0.0%	0.0	0.0%	0.0	0.0%	0.9	100%
	12th	0.0	2.6%	0.0	0.0%	0.7	97.4%	0.0	0.0%	0.0	0.0%	0.0	0.0%	0.8	100%
	15th	0.5	88.5%	0.0	0.0%	0.1	10.4%	0.0	0.0%	0.0	0.0%	0.0	1.1%	0.6	100%
	16th	0.7	31.8%	0.5	26.4%	0.9	41.8%	0.0	0.0%	0.0	0.0%	0.0	0.0%	2.1	100%
<b>Southern Total</b>		<b>17.3</b>	<b>45.3%</b>	<b>9.5</b>	<b>8.3%</b>	<b>13.5</b>	<b>45.9%</b>	<b>0.0</b>	<b>0.0%</b>	<b>0.0</b>	<b>0.0%</b>	<b>0.5</b>	<b>0.5%</b>	<b>40.8</b>	<b>100%</b>
<b>Western</b>															
	6th	0.0	0.9%	0.0	1.1%	0.7	45.2%	0.9	52.8%	0.0	0.0%	0.0	0.0%	1.6	100%
	7th	2.5	85.1%	0.0	0.0%	0.4	14.9%	0.0	0.0%	0.0	0.0%	0.0	0.0%	2.9	100%
	9th	0.1	57.7%	0.0	0.0%	0.1	42.3%	0.0	0.0%	0.0	0.0%	0.0	0.0%	0.2	100%
	14th	0.4	100.0%	0.0	0.0%	0.0	0.0%	0.0	0.0%	0.0	0.0%	0.0	0.0%	0.4	100%
	21st	7.0	88.1%	0.0	0.2%	0.9	10.8%	0.0	0.0%	0.0	0.0%	0.1	0.9%	8.0	100%
	22nd	0.7	85.0%	0.0	0.0%	0.0	1.2%	0.1	13.8%	0.0	0.0%	0.0	0.0%	0.8	100%
<b>Western Total</b>		<b>10.7</b>	<b>69.5%</b>	<b>0.0</b>	<b>0.2%</b>	<b>2.1</b>	<b>19.1%</b>	<b>1.0</b>	<b>11.1%</b>	<b>0.0</b>	<b>0.0%</b>	<b>0.1</b>	<b>0.2%</b>	<b>13.9</b>	<b>100%</b>
	Missing JD Data	0.2		0.1		0.6		0.0		0.0		0.0		1.0	
<b>Statewide Total</b>		<b>62.8</b>	<b>39.7%</b>	<b>34.9</b>	<b>22.0%</b>	<b>55.3</b>	<b>34.9%</b>	<b>1.1</b>	<b>0.7%</b>	<b>1.7</b>	<b>1.1%</b>	<b>2.6</b>	<b>1.6%</b>	<b>158.4</b>	<b>100%</b>



# Central Region

## CYDC Reason Detained by Judicial District January 2022 New Admits



■ CENTRAL REGION, 62 New Admits

■ 5th JD, 0 New Admits

■ 18th JD, 29 New Admits

■ 1st JD, 9 New Admits

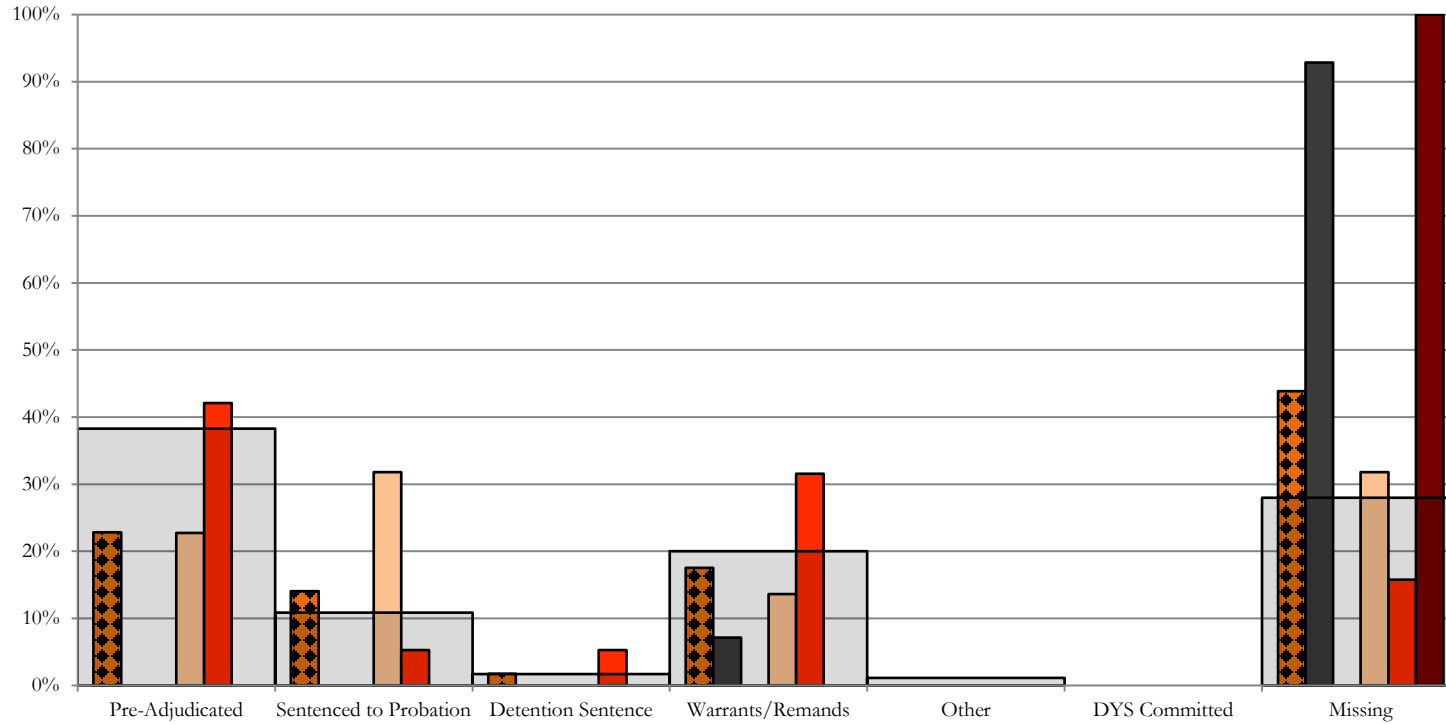
■ 2nd JD, 24 New Admits

■ STATEWIDE, 175 New Admits

# Northeast Region

## CYDC Reason Detained by Judicial District

### January 2022 New Admits



■ NORTHEAST REGION, 57 New Admits

■ 8th JD, 14 New Admits

■ 13th JD, 0 New Admits

■ 17th JD, 22 New Admits

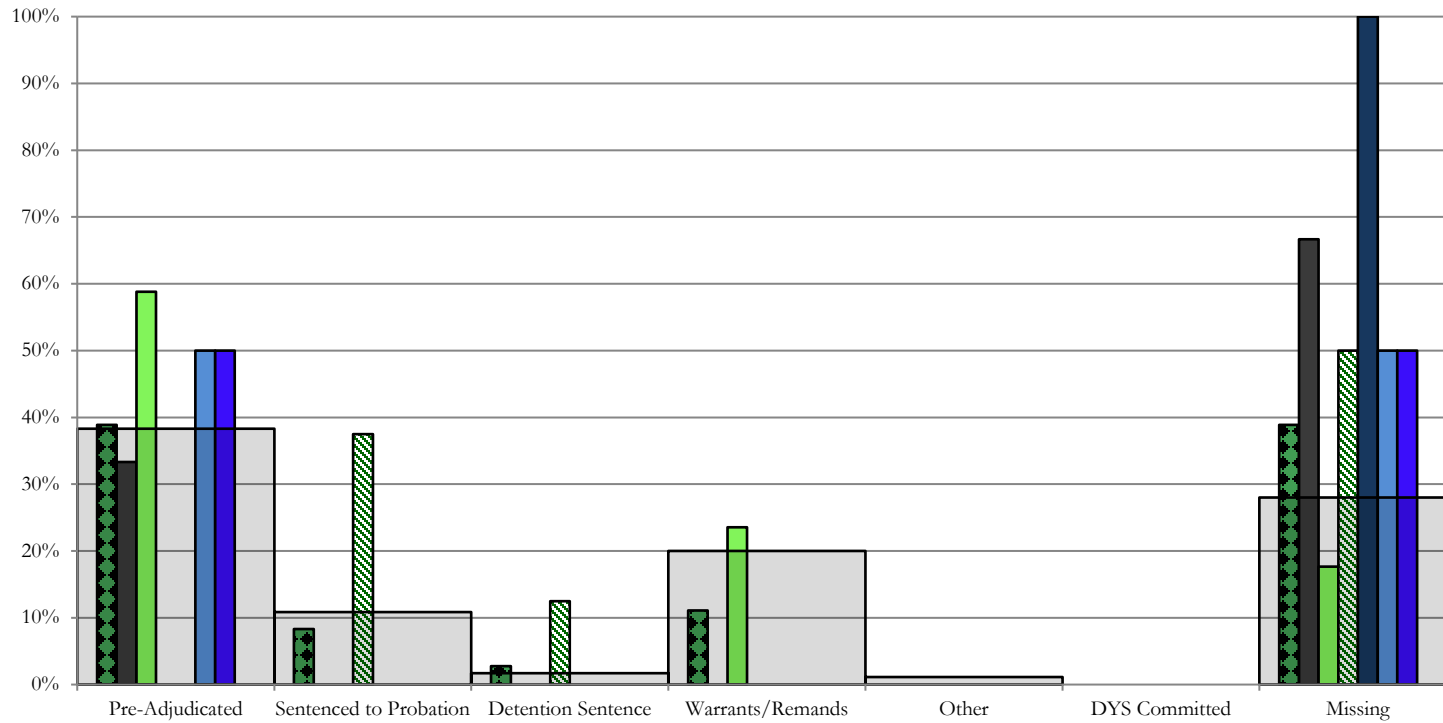
■ 19th JD, 19 New Admits

■ 20th JD, 2 New Admits

■ STATEWIDE, 175 New Admits

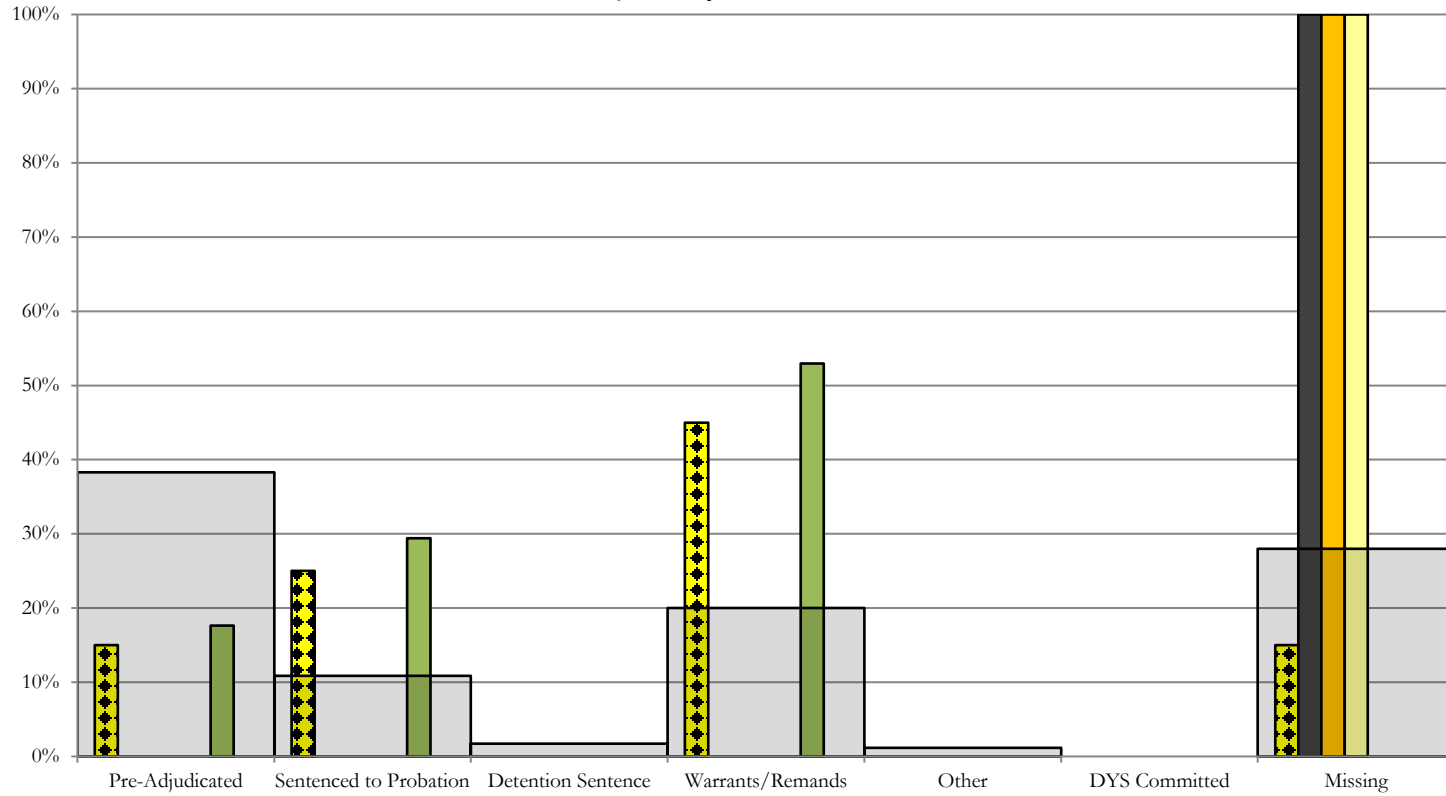


## Southern Region CYDC Reason Detained by Judicial District January 2022 New Admits



- SOUTHERN REGION, 36 New Admits
- 4th JD, 17 New Admits
- 11th JD, 2 New Admits
- 15th JD, 4 New Admits
- STATEWIDE, 175 New Admits
- 3rd JD, 3 New Admits
- 10th JD, 8 New Admits
- 12th JD, 2 New Admits
- 16th JD, 0 New Admits

## Western Region CYDC Reason Detained by Judicial District January 2022 New Admits



■ WESTERN REGION, 20 New Admits

■ 7th JD, 1 New Admits

■ 14th JD, 0 New Admits

■ 22nd JD, 0 New Admits

■ 6th JD, 1 New Admits

■ 9th JD, 1 New Admits

■ 21st JD, 17 New Admits

■ STATEWIDE, 175 New Admits

# January 2022 CYDC JDSAG Supplemental Report

CYDC Reason Detained (RD) by Judicial District Year to Date

Region	JD	Year to Date New Admits	Pre-Adjudicated				Sentenced to Probation				Detention Sentence								Warrants/Remands				Other				DYS Committed				Missing	
			Felony		Misdemeanor		Technical Violator		New Charges		Probation Sentence		Detention Sentence		Valid Court Order (VCO) Truancy		Awaiting DSS (Social Services) Placement		Failure to Appear (FTA)		Failure to Comply (FTC)		Interstate Compact on Juveniles (ICJ) Hold		Immigration Hold		Institutional		Parole		Missing	
			#	%	#	%	#	%	#	%	#	%	#	%	#	%	#	%	#	%	#	%	#	%	#	%	#	%	#	%	#	%
<b>Central Region</b>																																
	1st	86	17	19.8%	5	5.8%	2	2.3%	13	15.1%	0	0.0%	1	1.2%	0	0.0%	0	0.0%	7	8.1%	9	10.5%	0	0.0%	0	0.0%	0	0.0%	0	0.0%	32	37.2%
	2nd	215	85	39.5%	39	18.1%	0	0.0%	1	0.5%	0	0.0%	0	0.0%	0	0.0%	0	0.0%	22	10.2%	54	25.1%	5	2.3%	0	0.0%	0	0.0%	0	0.0%	9	4.2%
	5th	9	4	44.4%	1	11.1%	0	0.0%	1	11.1%	0	0.0%	0	0.0%	0	0.0%	0	0.0%	0	0.0%	1	11.1%	0	0.0%	0	0.0%	0	0.0%	0	0.0%	2	22.2%
	18th	218	69	31.7%	33	15.1%	0	0.0%	34	15.6%	0	0.0%	5	2.3%	0	0.0%	0	0.0%	4	1.8%	40	18.3%	3	1.4%	0	0.0%	0	0.0%	0	0.0%	30	13.8%
<b>Central Total</b>		<b>528</b>	<b>175</b>	<b>33.1%</b>	<b>78</b>	<b>14.8%</b>	<b>2</b>	<b>0.4%</b>	<b>49</b>	<b>9.3%</b>	<b>0</b>	<b>0.0%</b>	<b>6</b>	<b>1.1%</b>	<b>0</b>	<b>0.0%</b>	<b>0</b>	<b>0.0%</b>	<b>33</b>	<b>6.3%</b>	<b>104</b>	<b>19.7%</b>	<b>8</b>	<b>1.5%</b>	<b>0</b>	<b>0.0%</b>	<b>0</b>	<b>0.0%</b>	<b>0</b>	<b>0.0%</b>	<b>73</b>	<b>13.8%</b>
<b>Northeast Region</b>																																
	8th	66	1	1.5%	0	0.0%	0	0.0%	2	3.0%	0	0.0%	3	4.5%	0	0.0%	0	0.0%	1	1.5%	3	4.5%	0	0.0%	0	0.0%	0	0.0%	0	0.0%	56	84.8%
	13th	27	14	51.9%	3	11.1%	3	11.1%	0	0.0%	0	0.0%	2	7.4%	0	0.0%	0	0.0%	0	0.0%	5	18.5%	0	0.0%	0	0.0%	0	0.0%	0	0.0%	0	0.0%
	17th	134	18	13.4%	5	3.7%	0	0.0%	35	26.1%	0	0.0%	1	0.7%	0	0.0%	0	0.0%	8	6.0%	17	12.7%	1	0.7%	0	0.0%	0	0.0%	0	0.0%	49	36.6%
	19th	137	47	34.3%	23	16.8%	0	0.0%	8	5.8%	0	0.0%	2	1.5%	0	0.0%	0	0.0%	6	4.4%	40	29.2%	1	0.7%	0	0.0%	0	0.0%	0	0.0%	10	7.3%
	20th	36	5	13.9%	2	5.6%	0	0.0%	0	0.0%	0	0.0%	4	11.1%	0	0.0%	1	2.8%	0	0.0%	1	2.8%	0	0.0%	0	0.0%	0	0.0%	0	0.0%	23	63.9%
<b>Northeast Total</b>		<b>400</b>	<b>85</b>	<b>21.3%</b>	<b>33</b>	<b>8.3%</b>	<b>3</b>	<b>0.8%</b>	<b>45</b>	<b>11.3%</b>	<b>0</b>	<b>0.0%</b>	<b>12</b>	<b>3.0%</b>	<b>0</b>	<b>0.0%</b>	<b>1</b>	<b>0.3%</b>	<b>15</b>	<b>3.8%</b>	<b>66</b>	<b>16.5%</b>	<b>2</b>	<b>0.5%</b>	<b>0</b>	<b>0.0%</b>	<b>0</b>	<b>0.0%</b>	<b>0</b>	<b>0.0%</b>	<b>138</b>	<b>34.5%</b>
<b>Southern Region</b>																																
	3rd	12	6	50.0%	1	8.3%	0	0.0%	0	0.0%	0	0.0%	0	0.0%	0	0.0%	0	0.0%	0	0.0%	1	8.3%	0	0.0%	0	0.0%	0	0.0%	0	0.0%	4	33.3%
	4th	251	105	41.8%	38	15.1%	0	0.0%	10	4.0%	0	0.0%	4	1.6%	0	0.0%	1	0.4%	32	12.7%	34	13.5%	0	0.0%	0	0.0%	0	0.0%	0	0.0%	27	10.8%
	10th	60	9	15.0%	0	0.0%	0	0.0%	21	35.0%	0	0.0%	4	6.7%	0	0.0%	1	1.7%	6	10.0%	5	8.3%	0	0.0%	0	0.0%	0	0.0%	0	0.0%	14	23.3%
	11th	14	0	0.0%	0	0.0%	0	0.0%	1	7.1%	0	0.0%	2	14.3%	0	0.0%	0	0.0%	0	0.0%	0	0.0%	0	0.0%	0	0.0%	0	0.0%	0	0.0%	11	78.6%
	12th	5	2	40.0%	0	0.0%	0	0.0%	0	0.0%	0	0.0%	0	0.0%	0	0.0%	0	0.0%	0	0.0%	0	0.0%	0	0.0%	0	0.0%	0	0.0%	0	0.0%	3	60.0%
	15th	7	2	28.6%	0	0.0%	0	0.0%	0	0.0%	0	0.0%	0	0.0%	0	0.0%	0	0.0%	0	0.0%	1	14.3%	0	0.0%	0	0.0%	0	0.0%	0	0.0%	4	57.1%
	16th	12	1	8.3%	0	0.0%	0	0.0%	0	0.0%	0	0.0%	0	0.0%	0	0.0%	0	0.0%	0	0.0%	0	0.0%	0	0.0%	0	0.0%	0	0.0%	0	0.0%	11	91.7%
<b>Southern Total</b>		<b>361</b>	<b>125</b>	<b>34.6%</b>	<b>39</b>	<b>10.8%</b>	<b>0</b>	<b>0.0%</b>	<b>32</b>	<b>8.9%</b>	<b>0</b>	<b>0.0%</b>	<b>10</b>	<b>2.8%</b>	<b>0</b>	<b>0.0%</b>	<b>2</b>	<b>0.6%</b>	<b>38</b>	<b>10.5%</b>	<b>41</b>	<b>11.4%</b>	<b>0</b>	<b>0.0%</b>	<b>0</b>	<b>0.0%</b>	<b>0</b>	<b>0.0%</b>	<b>0</b>	<b>0.0%</b>	<b>74</b>	<b>20.5%</b>
<b>Western Region</b>																																
	6th	5	3	60.0%	0	0.0%	0	0.0%	0	0.0%	0	0.0%	0	0.0%	0	0.0%	0	0.0%	0	0.0%	0	0.0%	0	0.0%	0	0.0%	0	0.0%	0	0.0%	2	40.0%
	7th	12	4	33.3%	0	0.0%	0	0.0%	1	8.3%	0	0.0%	1	8.3%	0	0.0%	0	0.0%	1	8.3%	1	8.3%	1	8.3%	0	0.0%	0	0.0%	0	0.0%	3	25.0%
	9th	6	1	16.7%	1	16.7%	1	16.7%	0	0.0%	0	0.0%	0	0.0%	0	0.0%	0	0.0%	0	0.0%	2	33.3%	0	0.0%	0	0.0%	0	0.0%	0	0.0%	1	16.7%
	14th	4	0	0.0%	2	50.0%	0	0.0%	0	0.0%	0	0.0%	0	0.0%	0	0.0%	0	0.0%	0	0.0%	0	0.0%	0	0.0%	0	0.0%	0	0.0%	0	0.0%	2	50.0%
	21st	102	14	13.7%	6	5.9%	2	2.0%	8	7.8%	0	0.0%	0	0.0%	0	0.0%	0	0.0%	10	9.8%	41	40.2%	0	0.0%	0	0.0%	0	0.0%	0	0.0%	21	20.6%
	22nd	11	0	0.0%	0	0.0%	0	0.0%	5	45.5%	0	0.0%	0	0.0%	0	0.0%	0	0.0%	0	0.0%	0	0.0%	0	0.0%	0	0.0%	0	0.0%	0	0.0%	6	54.5%
<b>Western Total</b>		<b>140</b>	<b>22</b>	<b>15.7%</b>	<b>9</b>	<b>6.4%</b>	<b>3</b>	<b>2.1%</b>	<b>14</b>	<b>10.0%</b>	<b>0</b>	<b>0.0%</b>	<b>1</b>	<b>0.7%</b>	<b>0</b>	<b>0.0%</b>	<b>0</b>	<b>0.0%</b>	<b>11</b>	<b>7.9%</b>	<b>44</b>	<b>31.4%</b>	<b>1</b>	<b>0.7%</b>	<b>0</b>	<b>0.0%</b>	<b>0</b>	<b>0.0%</b>	<b>0</b>	<b>0.0%</b>	<b>35</b>	<b>25.0%</b>
<b>Individual RD Totals</b>		<b>1,429</b>	<b>407</b>	<b>28.5%</b>	<b>159</b>	<b>11.1%</b>	<b>8</b>	<b>0.6%</b>	<b>140</b>	<b>9.8%</b>	<b>0</b>	<b>0.0%</b>	<b>29</b>	<b>2.0%</b>	<b>0</b>	<b>0.0%</b>	<b>3</b>	<b>0.2%</b>	<b>97</b>	<b>6.8%</b>	<b>255</b>	<b>17.8%</b>	<b>11</b>	<b>0.8%</b>	<b>0</b>	<b>0.0%</b>	<b>0</b>	<b>0.0%</b>	<b>0</b>	<b>0.0%</b>	<b>320</b>	<b>22.4%</b>
<b>Statewide Totals</b>		<b>1,429</b>	<b>566</b>	<b>39.6%</b>	<b>148</b>	<b>10.4%</b>			<b>140</b>	<b>10.4%</b>	<b>0</b>	<b>0.0%</b>	<b>32</b>	<b>2.2%</b>	<b>0</b>	<b>0.0%</b>	<b>3</b>	<b>0.2%</b>	<b>352</b>	<b>24.6%</b>	<b>44</b>	<b>31.4%</b>	<b>11</b>	<b>0.8%</b>	<b>0</b>	<b>0.0%</b>	<b>0</b>	<b>0.0%</b>	<b>0</b>	<b>0.0%</b>	<b>320</b>	<b>22.4%</b>

# January 2022 CYDC Supplemental Report

## DYS Detention Maximum Youth Served by Judicial District <sup>1</sup>

Region	JD	Detention Capacity	Detention ADP		Maximum Youth Served on a Single Day <sup>2,3</sup>			
			January 2022	YTD	January 2022		YTD	
					Number of Youth	% of Detention Capacity	Number of Youth	% of Detention Capacity
<i>Central Region</i>								
	1st	20	12.2	13.0	17	85.0%	20	100.0%
	2nd	35	26.4	27.6	31	88.6%	36	102.9%
	5th	2	0.0	0.4	0	0.0%	4	200.0%
	18th	37	32.1	26.3	35	94.6%	37	100.0%
<b>Central Region</b>		<b>94</b>	<b>70.7</b>	<b>67.3</b>	<b>77</b>	<b>81.9%</b>	<b>85</b>	<b>90.4%</b>
<i>Northeast Region</i>								
	8th	11	8.8	8.0	12	109.1%	14	127.3%
	13th	2	4.4	2.4	5	250.0%	7	350.0%
	17th	17	12.5	11.7	17	100.0%	19	111.8%
	19th	15	9.0	8.9	13	86.7%	13	86.7%
	20th	10	3.9	4.5	5	50.0%	8	80.0%
<b>Northeast Region</b>		<b>55</b>	<b>38.6</b>	<b>35.4</b>	<b>48</b>	<b>87.3%</b>	<b>49</b>	<b>89.1%</b>
<i>Southern Region</i>								
	3rd	2	1.3	1.1	2	100.0%	3	150.0%
	4th	27	28.9	29.1	36	133.3%	36	133.3%
	10th	10	8.8	6.3	10	100.0%	11	110.0%
	11th	2	0.3	0.9	1	50.0%	3	150.0%
	12th	2	1.4	0.8	2	100.0%	2	100.0%
	15th	2	0.1	0.6	3	150.0%	3	150.0%
	16th	2	2.2	2.0	3	150.0%	3	150.0%
<b>Southern Region</b>		<b>47</b>	<b>42.9</b>	<b>40.7</b>	<b>47</b>	<b>100.0%</b>	<b>48</b>	<b>102.1%</b>
<i>Western Region</i>								
	6th	2	2.1	1.6	3	150.0%	3	150.0%
	7th	3	0.5	2.9	1	33.3%	6	200.0%
	9th	2	0.1	0.2	1	50.0%	2	100.0%
	14th	2	0.0	0.4	0	0.0%	2	100.0%
	21st	8	7.2	8.0	10	125.0%	13	162.5%
	22nd	2	0.0	0.8	0	0.0%	4	200.0%
<b>Western Region</b>		<b>19</b>	<b>9.9</b>	<b>13.9</b>	<b>14</b>	<b>73.7%</b>	<b>19</b>	<b>100.0%</b>
<i>Missing JD or Multiple JDs</i>			2.9	1.0				
<b>Statewide</b>		<b>215</b>	<b>165.0</b>	<b>158.4</b>	<b>175</b>	<b>81.4%</b>	<b>182</b>	<b>84.7%</b>

<sup>1</sup> Maximum youth served is the highest number of youth in detention on a single day during the month or fiscal year.

<sup>2</sup> Regional figures are not the sum of judicial districts, but represent the maximum count on one day for the entire region.

<sup>3</sup> State figures are not the sum of regional figures, but represent the maximum count on one day for the entire state.