

December 2021 FY 2021-2022 CYDC JDSAG SUPPLEMENTAL REPORT

Prepared by the Division of Youth Services (DYS)
Data Management & Analysis
January 20



CO L O R A D O
Division of Youth Services
Office of Children, Youth & Families

December 2021 CYDC Supplemental Report

DYS Commitment ADP & New Commitments by Judicial District

Region	JD ¹	2022 Population Estimates ²	ADP ³		New Commitments		
			December 2021	YTD	December 2021	YTD	YTD Rate ⁴
<i>Central Region</i>							
	1st	52,891	11.2	14.8	2	4	0.8
	2nd	57,545	57.2	57.5	3	14	2.4
	5th	9,044	1.0	2.4	0	0	0.0
	18th	112,610	49.1	56.6	2	13	1.2
Central Total		232,090	118.6	131.2	7	31	1.3
<i>Northeast Region</i>							
	8th	35,419	11.5	12.6	2	9	2.5
	13th	8,500	1.0	1.0	0	0	0.0
	17th	68,397	23.0	23.6	0	6	0.9
	19th	38,823	20.3	26.1	1	4	1.0
	20th	29,677	6.5	6.7	1	2	0.7
Northeast Total		180,816	62.3	70.0	4	21	1.2
<i>Southern Region</i>							
	3rd	1,848	2.0	3.1	0	1	5.4
	4th	83,104	42.5	45.5	0	6	0.7
	10th	17,372	12.3	12.2	0	5	2.9
	11th	7,277	3.0	2.6	0	0	0.0
	12th	5,367	1.0	1.2	0	0	0.0
	15th	2,139	2.4	2.9	0	0	0.0
	16th	2,747	2.0	2.0	0	0	0.0
Southern Total		119,854	65.2	69.4	0	12	1.0
<i>Western Region</i>							
	6th	7,169	3.3	3.8	0	1	1.4
	7th	10,421	4.1	3.1	0	2	1.9
	9th	8,228	1.1	1.8	0	0	0.0
	14th	5,680	0.0	0.0	0	0	0.0
	21st	16,229	17.8	14.4	2	11	6.8
	22nd	2,972	2.0	3.2	0	1	3.4
Western Total		50,699	28.3	26.2	2	15	3.0
Statewide Total		583,459	274.3	296.9	13	79	1.4

¹ JD represents the judicial district in which the client was committed. Regional totals are a sum of their respective judicial districts. Regional totals reported here may differ slightly from those reported in the Monthly Population Report, where region is defined by active caseloads.

² Source: DOLA 2022 Estimates

³ Due to rounding, totals shown may not be an exact sum of the subtotals.

⁴ Per 10,000 youth in the population

December 2021 CYDC Supplemental Report

DYS Detention ADP and New Detention Admissions by Judicial District

Region	JD	2022 Population Estimates ¹	ADP		New Admits		
			December 2021	YTD	December 2021	YTD	YTD New Admit Rate ²
<i>Central Region</i>							
	1st	52,891	16.1	13.2	15	77	14.6
	2nd	57,545	31.4	28.8	27	191	33.2
	5th	9,044	0.1	0.5	1	9	10.0
	18th	112,610	30.1	25.3	25	189	16.8
Central Total		232,090	77.7	67.8	68	466	20.1
<i>Northeast Region</i>							
	8th	35,419	8.0	7.9	5	52	14.7
	13th	8,500	4.7	2.1	7	27	31.8
	17th	68,397	10.6	11.4	16	110	16.1
	19th	38,823	8.7	8.9	18	118	30.4
	20th	29,677	3.8	4.5	3	34	11.5
Northeast Total		180,816	35.8	34.6	49	341	18.9
<i>Southern Region</i>							
	3rd	1,848	0.7	1.1	1	9	48.7
	4th	83,104	32.1	29.1	38	234	28.2
	10th	17,372	5.2	5.8	6	52	29.9
	11th	7,277	0.1	1.0	1	12	16.5
	12th	5,367	1.1	0.6	1	3	5.6
	15th	2,139	1.0	1.0	1	3	14.0
	16th	2,747	1.7	1.7	2	12	43.7
Southern Total		119,854	42.0	40.4	50	325	27.1
<i>Western Region</i>							
	6th	7,169	2.0	1.5	0	4	5.6
	7th	10,421	1.9	3.3	3	11	10.6
	9th	8,228	0.2	0.2	2	5	6.1
	14th	5,680	0.0	0.5	1	4	7.0
	21st	16,229	6.9	8.1	15	85	52.4
	22nd	2,972	0.1	0.9	0	11	37.0
Western Total		50,699	11.1	14.5	21	120	23.7
<i>Missing JD or Multiple JDs ³</i>			2.8	0.8	0	2	
Statewide Total		583,459	169.4	158.1	188	1,254	21.5

¹ Source: DOLA 2022 Estimates

² Per 10,000 youth in the population

³ One newly detained youth in October 2021 was an out-of-state fugitive who was briefly detained until extradited to their home state.

December 2021 CYDC Supplemental Report

DYS Detention LOS by Judicial District				
Region	JD	YTD Detention Releases	YTD LOS (days)	LOS (days) Compared to State AVG
<i>Central Region</i>				
	1st	71	21.4	-0.1
	2nd	185	23.0	1.5
	5th	9	8.9	-12.6
	18th	176	21.1	-0.4
Central Total		441	21.7	0.2
<i>Northeast Region</i>				
	8th	49	26.5	5.0
	13th	25	6.3	-15.2
	17th	114	12.0	-9.5
	19th	115	12.1	-9.4
	20th	34	15.8	-5.7
Northeast Total		337	14.1	-7.4
<i>Southern Region</i>				
	3rd	9	13.0	-8.5
	4th	227	22.7	1.2
	10th	51	13.4	-8.1
	11th	13	14.1	-7.4
	12th	2	10.1	-11.4
	15th	4	44.2	22.7
	16th	11	21.9	0.4
Southern Total		317	20.7	-0.8
<i>Western Region</i>				
	6th	2	1.5	-20.0
	7th	14	53.5	32.0
	9th	5	6.0	-15.5
	14th	5	24.5	3.0
	21st	72	7.3	-14.2
	22nd	10	8.4	-13.1
Western Total		108	14.0	-7.5
Statewide Total		1,196	21.5	-

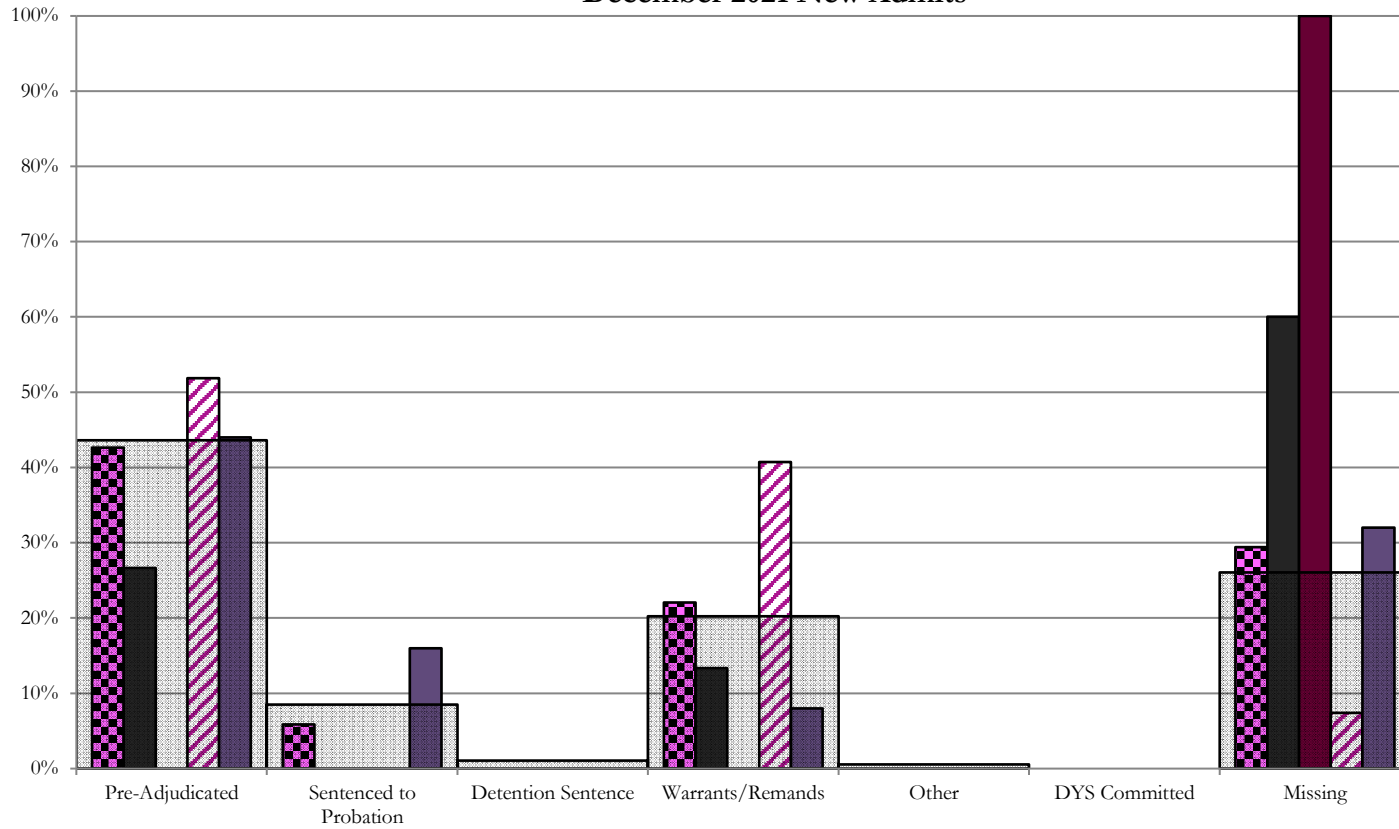
December 2021 CYDC JDSAG Supplemental Report

CYDC Reason Detained (RD) by Judicial District

Region	JD	Pre-Adjudicated				Sentenced to Probation				Detention Sentence								Warrants/Remands				Other						DYS Committed		Missing								
		Felony		Misdemeanor		Technical Violator		New Charges		Probation Sentence		Detention Sentence		Valid Court Order (VCO) Truancy		Awaiting DSS (Social Services) Placement		Failure to Appear (FTA)		Failure to Comply (FTC)		Interstate Compact on Juveniles (ICJ) Hold		Immigration Hold		No Bond Hold		Out-of-Country Warrant		Institutional		Parole		Missing				
		#	%	#	%	#	%	#	%	#	%	#	%	#	%	#	%	#	%	#	%	#	%	#	%	#	%	#	%	#	%	#	%	#	%			
Central Region																																						
	1st	15	2	13.3%	2	13.3%	0	0.0%	0	0.0%	0	0.0%	0	0.0%	0	0.0%	0	0.0%	0	0.0%	2	13.3%	0	0.0%	0	0.0%	0	0.0%	0	0.0%	0	0.0%	0	0.0%	0	0.0%	9	60.0%
	2nd	27	9	33.3%	5	18.5%	0	0.0%	0	0.0%	0	0.0%	0	0.0%	0	0.0%	0	0.0%	6	22.2%	5	18.5%	0	0.0%	0	0.0%	0	0.0%	0	0.0%	0	0.0%	0	0.0%	0	0.0%	2	7.4%
	5th	1	0	0.0%	0	0.0%	0	0.0%	0	0.0%	0	0.0%	0	0.0%	0	0.0%	0	0.0%	0	0.0%	0	0.0%	0	0.0%	0	0.0%	0	0.0%	0	0.0%	0	0.0%	0	0.0%	1	100.0%		
	18th	25	9	36.0%	2	8.0%	0	0.0%	4	16.0%	0	0.0%	0	0.0%	0	0.0%	0	0.0%	1	4.0%	0	0.0%	0	0.0%	0	0.0%	0	0.0%	0	0.0%	0	0.0%	0	0.0%	8	32.0%		
Central Total		68	20	29.4%	9	13.2%	0	0.0%	4	5.9%	0	0.0%	0	0.0%	0	0.0%	0	0.0%	7	10.3%	8	11.8%	0	0.0%	0	0.0%	0	0.0%	0	0.0%	0	0.0%	0	0.0%	20	29.4%		
Northeast Region																																						
	8th	5	0	0.0%	0	0.0%	0	0.0%	0	0.0%	0	0.0%	0	0.0%	0	0.0%	0	0.0%	0	0.0%	0	0.0%	0	0.0%	0	0.0%	0	0.0%	0	0.0%	0	0.0%	0	0.0%	5	100.0%		
	13th	7	2	28.6%	2	28.6%	3	42.9%	0	0.0%	0	0.0%	0	0.0%	0	0.0%	0	0.0%	0	0.0%	0	0.0%	0	0.0%	0	0.0%	0	0.0%	0	0.0%	0	0.0%	0	0.0%	0	0.0%	0	0.0%
	17th	16	4	25.0%	1	6.3%	0	0.0%	2	12.5%	0	0.0%	1	6.3%	0	0.0%	0	0.0%	0	0.0%	2	12.5%	1	6.3%	0	0.0%	0	0.0%	0	0.0%	0	0.0%	0	0.0%	5	31.3%		
	19th	18	8	44.4%	3	16.7%	0	0.0%	2	11.1%	0	0.0%	0	0.0%	0	0.0%	0	0.0%	1	5.6%	2	11.1%	0	0.0%	0	0.0%	0	0.0%	0	0.0%	0	0.0%	0	0.0%	2	11.1%		
	20th	3	0	0.0%	0	0.0%	0	0.0%	0	0.0%	0	0.0%	0	0.0%	0	0.0%	0	0.0%	0	0.0%	0	0.0%	0	0.0%	0	0.0%	0	0.0%	0	0.0%	0	0.0%	0	0.0%	3	100.0%		
Northeast Total		49	14	28.6%	6	12.2%	3	6.1%	4	8.2%	0	0.0%	1	2.0%	0	0.0%	0	0.0%	1	2.0%	4	8.2%	1	2.0%	0	0.0%	0	0.0%	0	0.0%	0	0.0%	0	0.0%	15	30.6%		
Southern Region																																						
	3rd	1	0	0.0%	0	0.0%	0	0.0%	0	0.0%	0	0.0%	0	0.0%	0	0.0%	0	0.0%	0	0.0%	1	100.0%	0	0.0%	0	0.0%	0	0.0%	0	0.0%	0	0.0%	0	0.0%	0	0.0%		
	4th	38	18	47.4%	6	15.8%	0	0.0%	2	5.3%	0	0.0%	0	0.0%	0	0.0%	0	0.0%	3	7.9%	5	13.2%	0	0.0%	0	0.0%	0	0.0%	0	0.0%	0	0.0%	0	0.0%	4	10.5%		
	10th	6	1	16.7%	0	0.0%	0	0.0%	2	33.3%	0	0.0%	1	16.7%	0	0.0%	0	0.0%	0	0.0%	0	0.0%	0	0.0%	0	0.0%	0	0.0%	0	0.0%	0	0.0%	0	0.0%	2	33.3%		
	11th	1	0	0.0%	0	0.0%	0	0.0%	1	100.0%	0	0.0%	0	0.0%	0	0.0%	0	0.0%	0	0.0%	0	0.0%	0	0.0%	0	0.0%	0	0.0%	0	0.0%	0	0.0%	0	0.0%	0	0.0%		
	12th	1	0	0.0%	0	0.0%	0	0.0%	0	0.0%	0	0.0%	0	0.0%	0	0.0%	0	0.0%	0	0.0%	0	0.0%	0	0.0%	0	0.0%	0	0.0%	0	0.0%	0	0.0%	1	100.0%				
	15th	1	0	0.0%	0	0.0%	0	0.0%	0	0.0%	0	0.0%	0	0.0%	0	0.0%	0	0.0%	0	0.0%	1	100.0%	0	0.0%	0	0.0%	0	0.0%	0	0.0%	0	0.0%	0	0.0%	0	0.0%		
	16th	2	1	50.0%	0	0.0%	0	0.0%	0	0.0%	0	0.0%	0	0.0%	0	0.0%	0	0.0%	0	0.0%	0	0.0%	0	0.0%	0	0.0%	0	0.0%	0	0.0%	0	0.0%	1	50.0%				
Southern Total		50	20	40.0%	6	12.0%	0	0.0%	5	10.0%	0	0.0%	1	2.0%	0	0.0%	0	0.0%	3	6.0%	7	14.0%	0	0.0%	0	0.0%	0	0.0%	0	0.0%	0	0.0%	0	0.0%	8	16.0%		
Western Region																																						
	6th	0	0	0.0%	0	0.0%	0	0.0%	0	0.0%	0	0.0%	0	0.0%	0	0.0%	0	0.0%	0	0.0%	0	0.0%	0	0.0%	0	0.0%	0	0.0%	0	0.0%	0	0.0%	0	0.0%	0	0.0%		
	7th	3	1	33.3%	0	0.0%	0	0.0%	0	0.0%	0	0.0%	0	0.0%	0	0.0%	0	0.0%	0	0.0%	0	0.0%	0	0.0%	0	0.0%	0	0.0%	0	0.0%	0	0.0%	0	0.0%	2	66.7%		
	9th	2	1	50.0%	1	50.0%	0	0.0%	0	0.0%	0	0.0%	0	0.0%	0	0.0%	0	0.0%	0	0.0%	0	0.0%	0	0.0%	0	0.0%	0	0.0%	0	0.0%	0	0.0%	0	0.0%	0	0.0%		
	14th	1	0	0.0%	0	0.0%	0	0.0%	0	0.0%	0	0.0%	0	0.0%	0	0.0%	0	0.0%	0	0.0%	0	0.0%	0	0.0%	0	0.0%	0	0.0%	0	0.0%	0	0.0%	1	100.0%				
	21st	15	0	0.0%	4	26.7%	0	0.0%	0	0.0%	0	0.0%	0	0.0%	0	0.0%	0	0.0%	4	26.7%	4	26.7%	0	0.0%	0	0.0%	0	0.0%	0	0.0%	0	0.0%	0	0.0%	3	20.0%		
	22nd	0	0	0.0%	0	0.0%	0	0.0%	0	0.0%	0	0.0%	0	0.0%	0	0.0%	0	0.0%	0	0.0%	0	0.0%	0	0.0%	0	0.0%	0	0.0%	0	0.0%	0	0.0%	0	0.0%	0	0.0%		
Western Total		21	2	9.5%	5	23.8%	0	0.0%	0	0.0%	0	0.0%	0	0.0%	0	0.0%	0	0.0%	4	19.0%	4	19.0%	0	0.0%	0	0.0%	0	0.0%	0	0.0%	0	0.0%	0	0.0%	6	28.6%		
Other Total		0	0	0.0%	0	0.0%	0	0.0%	0	0.0%	0	0.0%	0	0.0%	0	0.0%	0	0.0%	0	0.0%	0	0.0%	0	0.0%	0	0.0%	0	0.0%	0	0.0%	0	0.0%	0	0.0%	0	0.0%		
Individual RD Totals		188	56	29.8%	26	13.8%	3	1.6%	13	6.9%	0	0.0%	2	1.1%	0	0.0%	0	0.0%	15	8.0%	23	12.2%	1	0.5%	0	0.0%	0	0.0%	0	0.0%	0	0.0%	0	0.0%	49	26.1%		
Statewide Totals		188	82	43.6%	16	8.5%	2	1.1%	13	6.9%	0	0.0%	2	1.1%	0	0.0%	0	0.0%	15	8.0%	23	12.2%	1	0.5%	0	0.0%	0	0.0%	0	0.0%	0	0.0%	49	26.1%				

Central Region

CYDC Reason Detained by Judicial District December 2021 New Admits



■ CENTRAL REGION, 68 New Admits

■ 5th JD, 1 New Admits

■ 18th JD, 25 New Admits

■ 1st JD, 15 New Admits

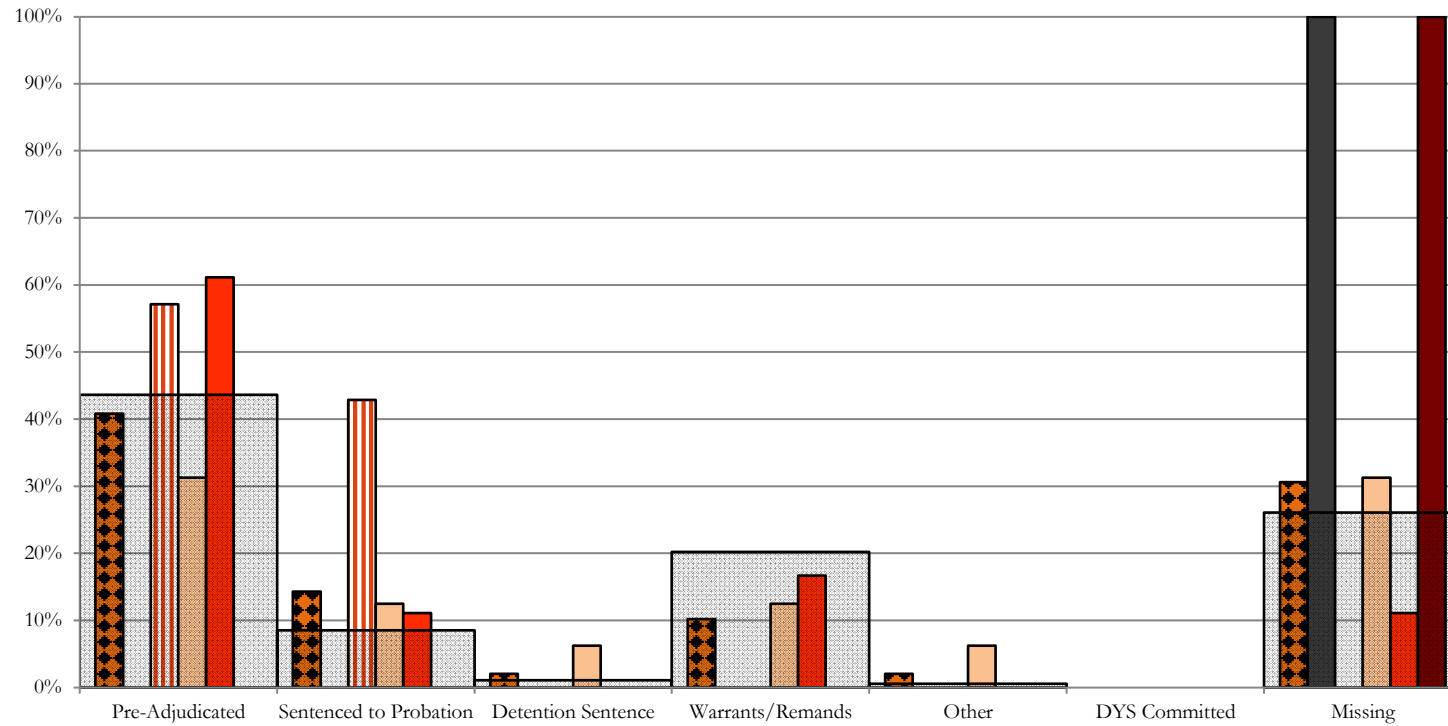
■ 2nd JD, 27 New Admits

■ STATEWIDE, 188 New Admits

Northeast Region

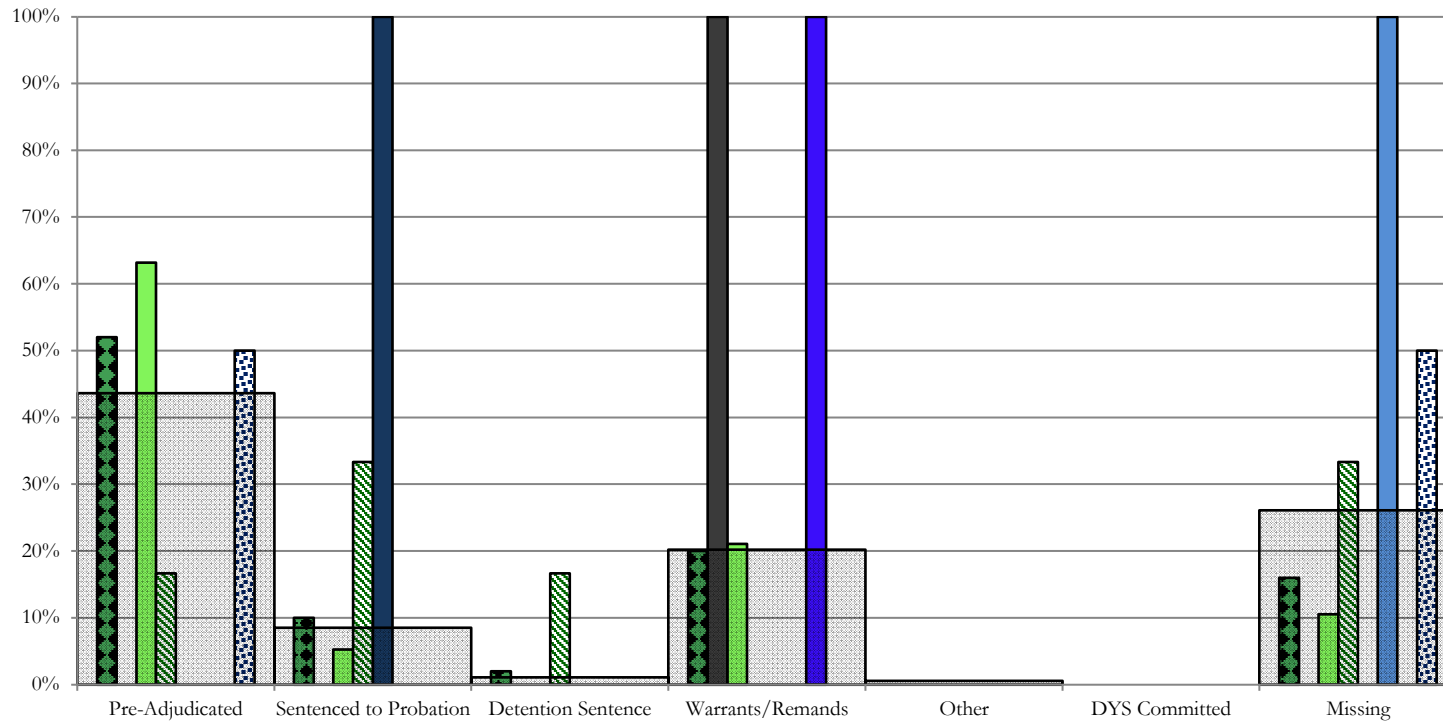
CYDC Reason Detained by Judicial District

December 2021 New Admits



- NORTHEAST REGION, 49 New Admits
- 8th JD, 5 New Admits
- 13th JD, 7 New Admits
- 17th JD, 16 New Admits
- 19th JD, 18 New Admits
- 20th JD, 3 New Admits
- STATEWIDE, 188 New Admits

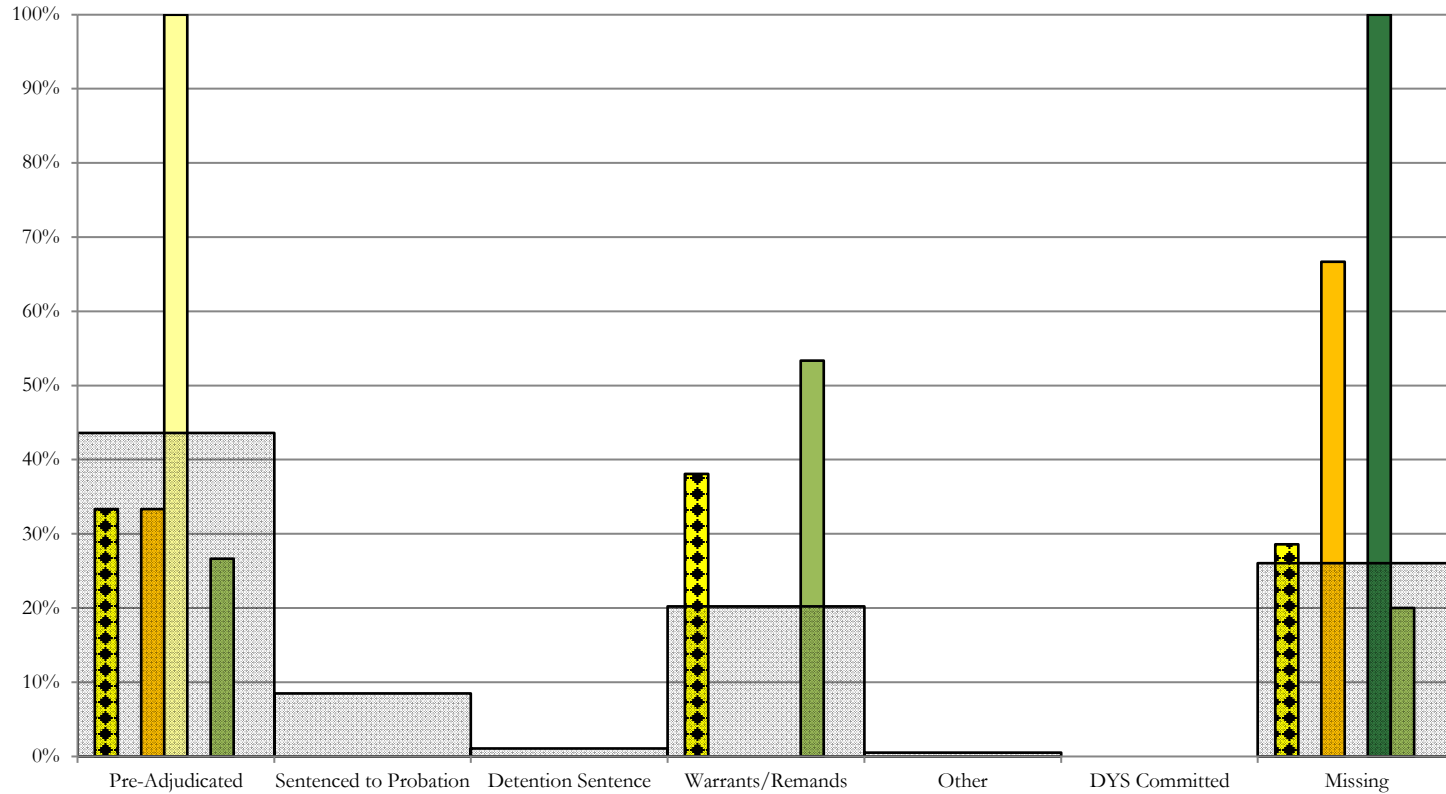
Southern Region CYDC Reason Detained by Judicial District December 2021 New Admits



- SOUTHERN REGION, 50 New Admits
- 4th JD, 38 New Admits
- 11th JD, 1 New Admits
- 15th JD, 1 New Admits
- STATEWIDE, 188 New Admits
- 3rd JD, 1 New Admits
- 10th JD, 6 New Admits
- 12th JD, 1 New Admits
- 16th JD, 2 New Admits

Western Region

CYDC Reason Detained by Judicial District December 2021 New Admits



■ WESTERN REGION, 21 New Admits

■ 7th JD, 3 New Admits

■ 14th JD, 1 New Admits

■ 22nd JD, 0 New Admits

■ 6th JD, 0 New Admits

■ 9th JD, 2 New Admits

■ 21st JD, 15 New Admits

■ STATEWIDE, 188 New Admits

December 2021 CYDC Supplemental Report

DYS Detention Maximum Youth Served by Judicial District ¹

Region	JD	Detention Capacity	Detention ADP		Maximum Youth Served on a Single Day ^{2,3}			
			December 2021	YTD	December 2021		YTD	
					Number of Youth	% of Detention Capacity	Number of Youth	% of Detention Capacity
<i>Central Region</i>								
	1st	20	16.1	13.2	20	100.0%	20	100.0%
	2nd	35	31.4	28.8	35	100.0%	36	102.9%
	5th	2	0.1	0.5	1	50.0%	4	200.0%
	18th	37	30.1	25.3	34	91.9%	37	100.0%
Central Region		94	77.7	67.8	81	86.2%	84	89.4%
<i>Northeast Region</i>								
	8th	11	8.0	7.9	10	90.9%	14	127.3%
	13th	2	4.7	2.1	7	350.0%	7	350.0%
	17th	17	10.6	11.4	16	94.1%	17	100.0%
	19th	15	8.7	8.9	13	86.7%	13	86.7%
	20th	10	3.8	4.5	5	50.0%	8	80.0%
Northeast Region		55	35.8	34.6	44	80.0%	49	89.1%
<i>Southern Region</i>								
	3rd	2	0.7	1.1	1	50.0%	3	150.0%
	4th	27	32.1	29.1	36	133.3%	36	133.3%
	10th	10	5.2	5.8	7	70.0%	11	110.0%
	11th	2	0.1	1.0	1	50.0%	3	150.0%
	12th	2	1.1	0.6	2	100.0%	2	100.0%
	15th	2	1.0	1.0	1	50.0%	2	100.0%
	16th	2	1.7	1.7	3	150.0%	3	150.0%
Southern Region		47	42.0	40.4	48	102.1%	48	102.1%
<i>Western Region</i>								
	6th	2	2.0	1.5	0	0.0%	3	150.0%
	7th	3	1.9	3.3	3	100.0%	6	200.0%
	9th	2	0.2	0.2	2	100.0%	2	100.0%
	14th	2	0.0	0.5	1	50.0%	2	100.0%
	21st	8	6.9	8.1	12	150.0%	13	162.5%
	22nd	2	0.1	0.9	1	50.0%	4	200.0%
Western Region		19	11.1	14.5	15	78.9%	19	100.0%
<i>Missing JD or Multiple JDs</i>			2.8	0.8				
Statewide		215	169.4	158.1	179	83.3%	182	84.7%

¹ Maximum youth served is the highest number of youth in detention on a single day during the month or fiscal year.

² Regional figures are not the sum of judicial districts, but represent the maximum count on one day for the entire region.

³ State figures are not the sum of regional figures, but represent the maximum count on one day for the entire state.

December 2021
CYDC Supplemental Report

CYDC Community ADP by Judicial District

Region	JD	Committed		Diversion		ICJ		Municipal		Pre-Adjudicated		Sentenced		VCO		Total	
		December 2021	YTD	December 2021	YTD	December 2021	YTD	December 2021	YTD	December 2021	YTD	December 2021	YTD	December 2021	YTD	December 2021	YTD
<i>Central Region</i>																	
	1st	0.0	0.0	0.0	0.0	0.0	0.0	0.0	0.0	0.0	0.0	0.0	0.0	0.0	0.0	0.0	0.0
	2nd	0.0	0.0	0.0	0.0	0.0	0.0	0.0	0.0	0.0	0.0	0.0	0.0	0.0	0.0	0.0	0.0
	5th	0.0	0.0	0.0	0.0	0.0	0.0	0.0	0.0	0.0	0.0	0.0	0.0	0.0	0.0	0.0	0.0
	18th	0.0	0.0	0.0	0.0	0.0	0.0	0.0	0.0	0.0	0.0	0.0	0.0	0.0	0.0	0.0	0.0
Central Total		0.0	0.0	0.0	0.0	0.0	0.0	0.0	0.0	0.0	0.0	0.0	0.0	0.0	0.0	0.0	0.0
<i>Northeast Region</i>																	
	8th	0.0	0.0	0.0	0.0	0.0	0.0	0.0	0.0	0.0	0.0	0.0	0.0	0.0	0.0	0.0	0.0
	13th	0.0	0.0	0.0	0.0	0.0	0.0	0.0	0.0	0.0	0.0	0.0	0.0	0.0	0.0	0.0	0.0
	17th	0.0	0.0	0.0	0.0	0.0	0.0	0.0	0.0	0.0	0.0	0.0	0.0	0.0	0.0	0.0	0.0
	19th	0.0	0.0	0.0	0.0	0.0	0.0	0.0	0.0	0.0	0.0	0.0	0.0	0.0	0.0	0.0	0.0
	20th	0.0	0.0	0.0	0.0	0.0	0.0	0.0	0.0	0.0	0.0	0.0	0.0	0.0	0.0	0.0	0.0
Northeast Total		0.0	0.0	0.0	0.0	0.0	0.0	0.0	0.0	0.0	0.0	0.0	0.0	0.0	0.0	0.0	0.0
<i>Southern Region</i>																	
	3rd	0.0	0.0	0.0	0.0	0.0	0.0	0.0	0.0	0.0	0.0	0.0	0.0	0.0	0.0	0.0	0.0
	4th	0.0	0.0	0.0	0.0	0.0	0.0	0.0	0.0	0.0	0.0	0.0	0.0	0.0	0.0	0.0	0.0
	10th	0.0	0.0	0.0	0.0	0.0	0.0	0.0	0.0	0.0	0.0	0.0	0.0	0.0	0.0	0.0	0.0
	11th	0.0	0.0	0.0	0.0	0.0	0.0	0.0	0.0	0.0	0.0	0.0	0.0	0.0	0.0	0.0	0.0
	12th	0.0	0.0	0.0	0.0	0.0	0.0	0.0	0.0	0.0	0.0	0.0	0.0	0.0	0.0	0.0	0.0
	15th	0.0	0.0	0.0	0.0	0.0	0.0	0.0	0.0	0.0	0.0	0.0	0.0	0.0	0.0	0.0	0.0
	16th	0.0	0.0	0.0	0.0	0.0	0.0	0.0	0.0	0.0	0.0	0.0	0.0	0.0	0.0	0.0	0.0
Southern Total		0.0	0.0	0.0	0.0	0.0	0.0	0.0	0.0	0.0	0.0	0.0	0.0	0.0	0.0	0.0	0.0
<i>Western Region</i>																	
	6th	0.0	0.0	0.0	0.0	0.0	0.0	0.0	0.0	0.0	0.0	0.0	0.0	0.0	0.0	0.0	0.0
	7th	0.0	0.0	0.0	0.0	0.0	0.0	0.0	0.0	0.0	0.0	0.0	0.0	0.0	0.0	0.0	0.0
	9th	0.0	0.0	0.0	0.0	0.0	0.0	0.0	0.0	0.0	0.0	0.0	0.0	0.0	0.0	0.0	0.0
	14th	0.0	0.0	0.0	0.0	0.0	0.0	0.0	0.0	0.0	0.0	0.0	0.0	0.0	0.0	0.0	0.0
	21st	0.0	0.0	0.0	0.0	0.0	0.0	0.0	0.0	0.0	0.0	0.0	0.0	0.0	0.0	0.0	0.0
	22nd	0.0	0.0	0.0	0.0	0.0	0.0	0.0	0.0	0.0	0.0	0.0	0.0	0.0	0.0	0.0	0.0
Western Total		0.0	0.0	0.0	0.0	0.0	0.0	0.0	0.0	0.0	0.0	0.0	0.0	0.0	0.0	0.0	0.0
Statewide Total		0.0	0.0	0.0	0.0	0.0	0.0	0.0	0.0	0.0	0.0	0.0	0.0	0.0	0.0	0.0	0.0

December 2021
CYDC Supplemental Report

CYDC Community ADP by Judicial District

Region	JD	Committed		Diversion		ICJ		Municipal		Pre-Adjudicated		Sentenced		VCO		Total	
		December 2021	YTD	December 2021	YTD	December 2021	YTD	December 2021	YTD	December 2021	YTD	December 2021	YTD	December 2021	YTD	December 2021	YTD
<i>Central Region</i>																	
	1st																
	2nd																
	5th																
	18th																
Central Total																	
<i>Northeast Region</i>																	
	8th																
	13th																
	17th																
	19th																
	20th																
Northeast Total																	
<i>Southern Region</i>																	
	3rd																
	4th																
	10th																
	11th																
	12th																
	15th																
	16th																
Southern Total																	
<i>Western Region</i>																	
	6th																
	7th																
	9th																
	14th																
	21st																
	22nd																
Western Total																	
Statewide Total																	

Data TBD and will be published at a later date;
Trails Mod corrections in progress.