

# November 2021 FY 2021-2022 CYDC JDSAG SUPPLEMENTAL REPORT

---

Prepared by the Division of Youth Services (DYS)  
Data Management & Analysis  
December 23



**COLORADO**  
**Division of Youth Services**  
Office of Children, Youth & Families

# November 2021 CYDC Supplemental Report

## DYS Commitment ADP & New Commitments by Judicial District

Region	JD <sup>1</sup>	2022 Population Estimates <sup>2</sup>	ADP <sup>3</sup>		New Commitments		
			November 2021	YTD	November 2021	YTD	YTD Rate <sup>4</sup>
<i>Central Region</i>							
	1st	52,891	10.7	15.4	2	2	0.4
	2nd	57,545	56.9	57.3	2	11	1.9
	5th	9,044	1.5	2.6	0	0	0.0
	18th	112,610	52.0	58.2	0	11	1.0
<b>Central Total</b>		<b>232,090</b>	<b>121.2</b>	<b>133.5</b>	<b>4</b>	<b>24</b>	<b>1.0</b>
<i>Northeast Region</i>							
	8th	35,419	13.0	13.0	1	7	2.0
	13th	8,500	1.0	1.0	0	0	0.0
	17th	68,397	23.9	23.7	0	6	0.9
	19th	38,823	22.6	27.7	1	3	0.8
	20th	29,677	7.0	6.8	0	1	0.3
<b>Northeast Total</b>		<b>180,816</b>	<b>67.5</b>	<b>72.1</b>	<b>2</b>	<b>17</b>	<b>0.9</b>
<i>Southern Region</i>							
	3rd	1,848	2.6	3.3	0	1	5.4
	4th	83,104	44.1	46.1	1	6	0.7
	10th	17,372	13.0	12.0	1	5	2.9
	11th	7,277	3.0	2.5	0	0	0.0
	12th	5,367	1.0	1.2	0	0	0.0
	15th	2,139	3.0	3.0	0	0	0.0
	16th	2,747	2.0	2.0	0	0	0.0
<b>Southern Total</b>		<b>119,854</b>	<b>68.7</b>	<b>70.2</b>	<b>2</b>	<b>12</b>	<b>1.0</b>
<i>Western Region</i>							
	6th	7,169	4.0	3.9	0	1	1.4
	7th	10,421	3.4	2.9	1	2	1.9
	9th	8,228	1.9	2.0	0	0	0.0
	14th	5,680	0.0	0.0	0	0	0.0
	21st	16,229	16.2	13.3	5	9	5.5
	22nd	2,972	2.6	3.4	1	1	3.4
<b>Western Total</b>		<b>50,699</b>	<b>28.2</b>	<b>25.5</b>	<b>7</b>	<b>13</b>	<b>2.6</b>
<b>Statewide Total</b>		<b>583,459</b>	<b>285.6</b>	<b>301.2</b>	<b>15</b>	<b>66</b>	<b>1.1</b>

<sup>1</sup> JD represents the judicial district in which the client was committed. Regional totals are a sum of their respective judicial districts. Regional totals reported here may differ slightly from those reported in the Monthly Population Report, where region is defined by active caseloads.

<sup>2</sup> Source: DOLA 2022 Estimates

<sup>3</sup> Due to rounding, totals shown may not be an exact sum of the subtotals.

<sup>4</sup> Per 10,000 youth in the population

# November 2021 CYDC Supplemental Report

## DYS Detention ADP and New Detention Admissions by Judicial District

Region	JD	2022 Population Estimates <sup>1</sup>	ADP		New Admits		
			November 2021	YTD	November 2021	YTD	YTD New Admit Rate <sup>2</sup>
<i>Central Region</i>							
	1st	52,891	16.3	12.6	13	62	11.7
	2nd	57,545	32.5	28.2	27	164	28.5
	5th	9,044	0.8	0.5	2	8	8.8
	18th	112,610	28.1	24.4	45	164	14.6
<b>Central Total</b>		<b>232,090</b>	<b>77.7</b>	<b>65.7</b>	<b>87</b>	<b>398</b>	<b>17.1</b>
<i>Northeast Region</i>							
	8th	35,419	10.1	7.9	18	47	13.3
	13th	8,500	3.0	1.5	6	20	23.5
	17th	68,397	11.0	11.5	14	93	13.6
	19th	38,823	9.2	8.9	25	101	26.0
	20th	29,677	5.7	4.6	3	31	10.4
<b>Northeast Total</b>		<b>180,816</b>	<b>38.9</b>	<b>34.4</b>	<b>66</b>	<b>292</b>	<b>16.1</b>
<i>Southern Region</i>							
	3rd	1,848	0.3	1.1	1	8	43.3
	4th	83,104	29.3	29.5	40	196	23.6
	10th	17,372	6.7	6.0	9	46	26.5
	11th	7,277	0.6	1.2	0	11	15.1
	12th	5,367	1.0	0.6	0	2	3.7
	15th	2,139	1.0	1.0	0	2	9.4
	16th	2,747	1.4	1.7	3	10	36.4
<b>Southern Total</b>		<b>119,854</b>	<b>40.3</b>	<b>41.0</b>	<b>53</b>	<b>275</b>	<b>22.9</b>
<i>Western Region</i>							
	6th	7,169	2.0	1.5	0	4	5.6
	7th	10,421	2.6	3.6	0	8	7.7
	9th	8,228	0.0	0.2	0	3	3.6
	14th	5,680	0.0	0.6	0	3	5.3
	21st	16,229	8.7	8.4	11	70	43.1
	22nd	2,972	0.7	1.1	2	11	37.0
<b>Western Total</b>		<b>50,699</b>	<b>13.9</b>	<b>15.3</b>	<b>13</b>	<b>99</b>	<b>19.5</b>
<i>Missing JD or Multiple JDs <sup>3</sup></i>			<i>1.1</i>	<i>0.4</i>			
<b>Statewide Total</b>		<b>583,459</b>	<b>171.9</b>	<b>156.8</b>	<b>219</b>	<b>1,064</b>	<b>18.2</b>

<sup>1</sup> Source: DOLA 2022 Estimates

<sup>2</sup> Per 10,000 youth in the population

<sup>3</sup> One newly detained youth in October 2021 was an out-of-state fugitive who was briefly detained until extradited to their home state.

# November 2021 CYDC Supplemental Report

DYS Detention LOS by Judicial District				
Region	JD	YTD Detention Releases	YTD LOS (days)	LOS (days) Compared to State AVG
<i>Central Region</i>				
	1st	10	25.3	5.4
	2nd	28	25.7	5.9
	5th	3	8.6	-11.3
	18th	38	22.4	2.5
<b>Central Total</b>		<b>79</b>	<b>23.4</b>	<b>3.6</b>
<i>Northeast Region</i>				
	8th	15	21.0	1.1
	13th	5	2.7	-17.2
	17th	15	5.0	-14.9
	19th	21	13.1	-6.8
	20th	6	13.8	-6.1
<b>Northeast Total</b>		<b>62</b>	<b>12.2</b>	<b>-7.6</b>
<i>Southern Region</i>				
	3rd	2	34.5	14.7
	4th	35	19.1	-0.7
	10th	12	12.4	-7.4
	11th	2	31.8	11.9
	12th	0	0.0	-19.9
	15th	0	0.0	-19.9
	16th	4	43.2	23.3
<b>Southern Total</b>		<b>55</b>	<b>20.4</b>	<b>0.6</b>
<i>Western Region</i>				
	6th	0	0.0	-19.9
	7th	0	0.0	-19.9
	9th	0	0.0	-19.9
	14th	0	0.0	-19.9
	21st	7	9.0	-10.9
	22nd	1	4.1	-15.7
<b>Western Total</b>		<b>8</b>	<b>8.4</b>	<b>-11.5</b>
<b>Statewide Total</b>		<b>201</b>	<b>19.9</b>	<b>-</b>

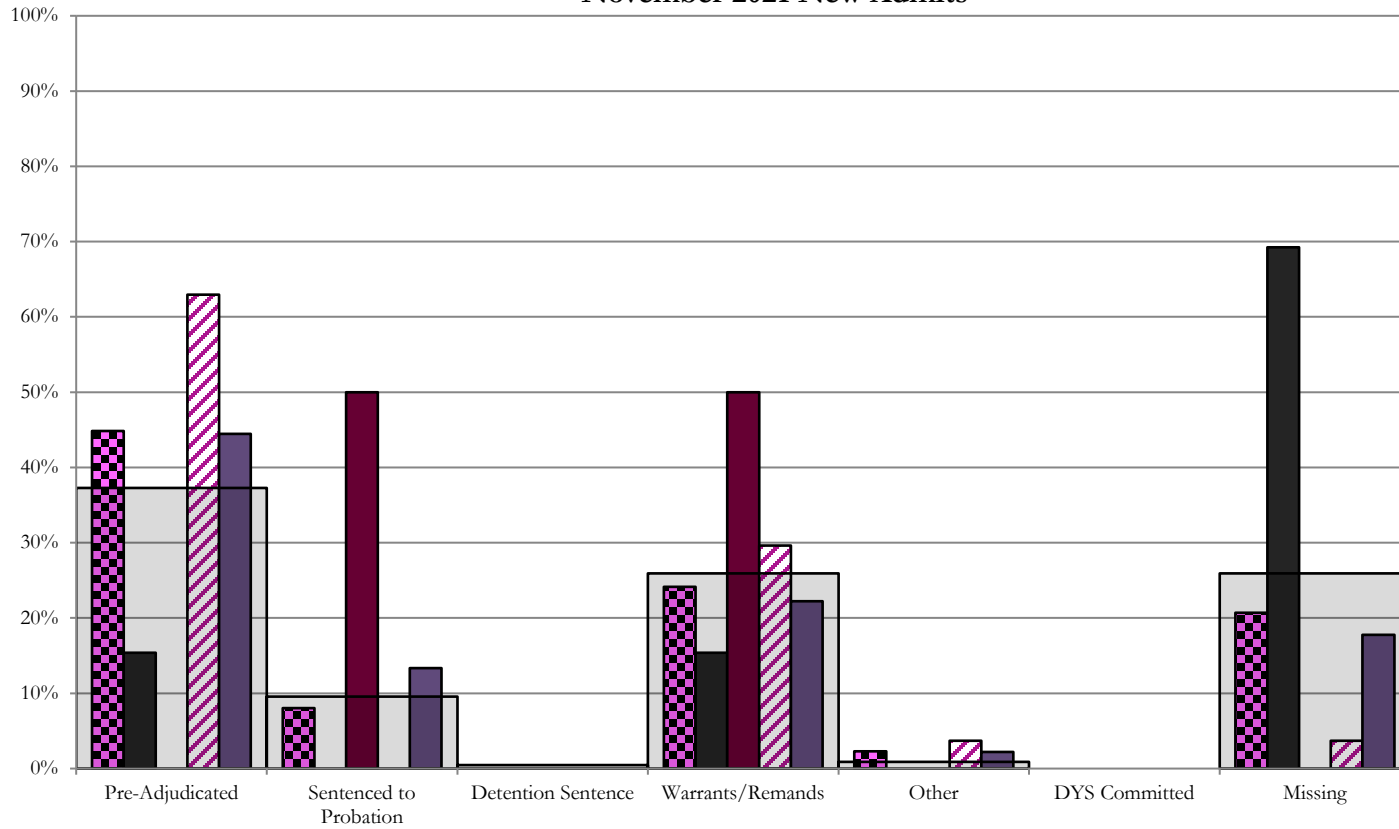
# November 2021 CYDC JDSAG Supplemental Report

## CYDC Reason Detained (RD) by Judicial District

Region	JD	Monthly New Admits	Pre-Adjudicated				Sentenced to Probation				Detention Sentence				Warrants/Remands				Other				DYS Committed		Missing											
			Felony		Misdemeanor		Technical Violator		New Charges		Probation Sentence		Detention Sentence		Valid Court Order (VCO) Truancy		Awaiting DSS (Social Services) Placement		Failure to Appear (FTA)		Failure to Comply (FTC)		Interstate Compact on Juveniles (ICJ) Hold		Immigration Hold		No Bond Hold		Out-of-Country Warrant		Institutional		Parole		Missing	
			#	%	#	%	#	%	#	%	#	%	#	%	#	%	#	%	#	%	#	%	#	%	#	%	#	%	#	%	#	%	#	%		
<i>Central Region</i>																																				
	1st	13	2	15.4%	0	0.0%	0	0.0%	0	0.0%	0	0.0%	0	0.0%	0	0.0%	0	0.0%	1	7.7%	1	7.7%	0	0.0%	0	0.0%	0	0.0%	0	0.0%	0	0.0%	0	0.0%	9	69.2%
	2nd	27	10	37.0%	7	25.9%	0	0.0%	0	0.0%	0	0.0%	0	0.0%	0	0.0%	0	0.0%	2	7.4%	6	22.2%	1	3.7%	0	0.0%	0	0.0%	0	0.0%	0	0.0%	0	0.0%	1	3.7%
	5th	2	0	0.0%	0	0.0%	0	0.0%	1	50.0%	0	0.0%	0	0.0%	0	0.0%	0	0.0%	0	0.0%	1	50.0%	0	0.0%	0	0.0%	0	0.0%	0	0.0%	0	0.0%	0	0.0%	0	0.0%
	18th	45	16	35.6%	4	8.9%	0	0.0%	6	13.3%	0	0.0%	0	0.0%	0	0.0%	0	0.0%	1	2.2%	9	20.0%	1	2.2%	0	0.0%	0	0.0%	0	0.0%	0	0.0%	0	0.0%	8	17.8%
<b>Central Total</b>		<b>87</b>	<b>28</b>	<b>32.2%</b>	<b>11</b>	<b>12.6%</b>	<b>0</b>	<b>0.0%</b>	<b>7</b>	<b>8.0%</b>	<b>0</b>	<b>0.0%</b>	<b>0</b>	<b>0.0%</b>	<b>0</b>	<b>0.0%</b>	<b>0</b>	<b>0.0%</b>	<b>4</b>	<b>4.6%</b>	<b>17</b>	<b>19.5%</b>	<b>2</b>	<b>2.3%</b>	<b>0</b>	<b>0.0%</b>	<b>0</b>	<b>0.0%</b>	<b>0</b>	<b>0.0%</b>	<b>0</b>	<b>0.0%</b>	<b>0</b>	<b>0.0%</b>	<b>18</b>	<b>20.7%</b>
<i>Northeast Region</i>																																				
	8th	18	0	0.0%	0	0.0%	0	0.0%	0	0.0%	0	0.0%	0	0.0%	0	0.0%	0	0.0%	1	5.6%	0	0.0%	0	0.0%	0	0.0%	0	0.0%	0	0.0%	0	0.0%	0	0.0%	17	94.4%
	13th	6	3	50.0%	0	0.0%	0	0.0%	0	0.0%	0	0.0%	0	0.0%	0	0.0%	0	0.0%	0	0.0%	3	50.0%	0	0.0%	0	0.0%	0	0.0%	0	0.0%	0	0.0%	0	0.0%	0	0.0%
	17th	14	2	14.3%	0	0.0%	0	0.0%	5	35.7%	0	0.0%	0	0.0%	0	0.0%	0	0.0%	0	0.0%	2	14.3%	0	0.0%	0	0.0%	0	0.0%	0	0.0%	0	0.0%	0	0.0%	5	35.7%
	19th	25	8	32.0%	2	8.0%	0	0.0%	0	0.0%	0	0.0%	1	4.0%	0	0.0%	0	0.0%	2	8.0%	7	28.0%	0	0.0%	0	0.0%	0	0.0%	0	0.0%	0	0.0%	0	0.0%	5	20.0%
	20th	3	0	0.0%	0	0.0%	0	0.0%	0	0.0%	0	0.0%	0	0.0%	0	0.0%	0	0.0%	0	0.0%	0	0.0%	0	0.0%	0	0.0%	0	0.0%	0	0.0%	0	0.0%	0	0.0%	3	100.0%
<b>Northeast Total</b>		<b>66</b>	<b>13</b>	<b>19.7%</b>	<b>2</b>	<b>3.0%</b>	<b>0</b>	<b>0.0%</b>	<b>5</b>	<b>7.6%</b>	<b>0</b>	<b>0.0%</b>	<b>1</b>	<b>1.5%</b>	<b>0</b>	<b>0.0%</b>	<b>0</b>	<b>0.0%</b>	<b>3</b>	<b>4.5%</b>	<b>12</b>	<b>18.2%</b>	<b>0</b>	<b>0.0%</b>	<b>0</b>	<b>0.0%</b>	<b>0</b>	<b>0.0%</b>	<b>0</b>	<b>0.0%</b>	<b>0</b>	<b>0.0%</b>	<b>0</b>	<b>0.0%</b>	<b>30</b>	<b>45.5%</b>
<i>Southern Region</i>																																				
	3rd	1	1	100.0%	0	0.0%	0	0.0%	0	0.0%	0	0.0%	0	0.0%	0	0.0%	0	0.0%	0	0.0%	0	0.0%	0	0.0%	0	0.0%	0	0.0%	0	0.0%	0	0.0%	0	0.0%	0	0.0%
	4th	40	15	37.5%	9	22.5%	0	0.0%	3	7.5%	0	0.0%	0	0.0%	0	0.0%	0	0.0%	5	12.5%	5	12.5%	0	0.0%	0	0.0%	0	0.0%	0	0.0%	0	0.0%	0	0.0%	3	7.5%
	10th	9	1	11.1%	0	0.0%	0	0.0%	5	55.6%	0	0.0%	0	0.0%	0	0.0%	0	0.0%	1	11.1%	1	11.1%	0	0.0%	0	0.0%	0	0.0%	0	0.0%	0	0.0%	0	0.0%	1	11.1%
	11th	0	0	0.0%	0	0.0%	0	0.0%	0	0.0%	0	0.0%	0	0.0%	0	0.0%	0	0.0%	0	0.0%	0	0.0%	0	0.0%	0	0.0%	0	0.0%	0	0.0%	0	0.0%	0	0.0%	0	0.0%
	12th	0	0	0.0%	0	0.0%	0	0.0%	0	0.0%	0	0.0%	0	0.0%	0	0.0%	0	0.0%	0	0.0%	0	0.0%	0	0.0%	0	0.0%	0	0.0%	0	0.0%	0	0.0%	0	0.0%	0	0.0%
	15th	0	0	0.0%	0	0.0%	0	0.0%	0	0.0%	0	0.0%	0	0.0%	0	0.0%	0	0.0%	0	0.0%	0	0.0%	0	0.0%	0	0.0%	0	0.0%	0	0.0%	0	0.0%	0	0.0%	0	0.0%
	16th	3	0	0.0%	0	0.0%	0	0.0%	0	0.0%	0	0.0%	0	0.0%	0	0.0%	0	0.0%	0	0.0%	0	0.0%	0	0.0%	0	0.0%	0	0.0%	0	0.0%	0	0.0%	3	100.0%		
<b>Southern Total</b>		<b>53</b>	<b>17</b>	<b>32.1%</b>	<b>9</b>	<b>17.0%</b>	<b>0</b>	<b>0.0%</b>	<b>8</b>	<b>15.1%</b>	<b>0</b>	<b>0.0%</b>	<b>0</b>	<b>0.0%</b>	<b>0</b>	<b>0.0%</b>	<b>0</b>	<b>0.0%</b>	<b>6</b>	<b>11.3%</b>	<b>6</b>	<b>11.3%</b>	<b>0</b>	<b>0.0%</b>	<b>0</b>	<b>0.0%</b>	<b>0</b>	<b>0.0%</b>	<b>0</b>	<b>0.0%</b>	<b>0</b>	<b>0.0%</b>	<b>0</b>	<b>0.0%</b>	<b>7</b>	<b>13.2%</b>
<i>Western Region</i>																																				
	6th	0	0	0.0%	0	0.0%	0	0.0%	0	0.0%	0	0.0%	0	0.0%	0	0.0%	0	0.0%	0	0.0%	0	0.0%	0	0.0%	0	0.0%	0	0.0%	0	0.0%	0	0.0%	0	0.0%	0	0.0%
	7th	0	0	0.0%	0	0.0%	0	0.0%	0	0.0%	0	0.0%	0	0.0%	0	0.0%	0	0.0%	0	0.0%	0	0.0%	0	0.0%	0	0.0%	0	0.0%	0	0.0%	0	0.0%	0	0.0%	0	0.0%
	9th	0	0	0.0%	0	0.0%	0	0.0%	0	0.0%	0	0.0%	0	0.0%	0	0.0%	0	0.0%	0	0.0%	0	0.0%	0	0.0%	0	0.0%	0	0.0%	0	0.0%	0	0.0%	0	0.0%	0	0.0%
	14th	0	0	0.0%	0	0.0%	0	0.0%	0	0.0%	0	0.0%	0	0.0%	0	0.0%	0	0.0%	0	0.0%	0	0.0%	0	0.0%	0	0.0%	0	0.0%	0	0.0%	0	0.0%	0	0.0%	0	0.0%
	21st	11	1	9.1%	1	9.1%	0	0.0%	0	0.0%	0	0.0%	0	0.0%	0	0.0%	0	0.0%	3	27.3%	6	54.5%	0	0.0%	0	0.0%	0	0.0%	0	0.0%	0	0.0%	0	0.0%	0	0.0%
	22nd	2	0	0.0%	0	0.0%	0	0.0%	1	50.0%	0	0.0%	0	0.0%	0	0.0%	0	0.0%	0	0.0%	0	0.0%	0	0.0%	0	0.0%	0	0.0%	0	0.0%	0	0.0%	1	50.0%		
<b>Western Total</b>		<b>13</b>	<b>1</b>	<b>7.7%</b>	<b>1</b>	<b>7.7%</b>	<b>0</b>	<b>0.0%</b>	<b>1</b>	<b>7.7%</b>	<b>0</b>	<b>0.0%</b>	<b>0</b>	<b>0.0%</b>	<b>0</b>	<b>0.0%</b>	<b>0</b>	<b>0.0%</b>	<b>3</b>	<b>23.1%</b>	<b>6</b>	<b>46.2%</b>	<b>0</b>	<b>0.0%</b>	<b>0</b>	<b>0.0%</b>	<b>0</b>	<b>0.0%</b>	<b>0</b>	<b>0.0%</b>	<b>0</b>	<b>0.0%</b>	<b>1</b>	<b>7.7%</b>		
<b>Other Total</b>		<b>1</b>	<b>0</b>	<b>0.0%</b>	<b>0</b>	<b>0.0%</b>	<b>0</b>	<b>0.0%</b>	<b>0</b>	<b>0.0%</b>	<b>0</b>	<b>0.0%</b>	<b>0</b>	<b>0.0%</b>	<b>0</b>	<b>0.0%</b>	<b>0</b>	<b>0.0%</b>	<b>0</b>	<b>0.0%</b>	<b>0</b>	<b>0.0%</b>	<b>0</b>	<b>0.0%</b>	<b>0</b>	<b>0.0%</b>	<b>0</b>	<b>0.0%</b>	<b>0</b>	<b>0.0%</b>	<b>0</b>	<b>0.0%</b>	<b>1</b>	<b>100.0%</b>		
<b>Individual RD Totals</b>		<b>220</b>	<b>59</b>	<b>26.8%</b>	<b>23</b>	<b>10.5%</b>	<b>0</b>	<b>0.0%</b>	<b>21</b>	<b>9.5%</b>	<b>0</b>	<b>0.0%</b>	<b>1</b>	<b>0.5%</b>	<b>0</b>	<b>0.0%</b>	<b>0</b>	<b>0.0%</b>	<b>16</b>	<b>7.3%</b>	<b>41</b>	<b>18.6%</b>	<b>2</b>	<b>0.9%</b>	<b>0</b>	<b>0.0%</b>	<b>0</b>	<b>0.0%</b>	<b>0</b>	<b>0.0%</b>	<b>0</b>	<b>0.0%</b>	<b>57</b>	<b>25.9%</b>		
<b>Statewide Totals</b>		<b>220</b>	<b>82</b>	<b>37.3%</b>	<b>21</b>	<b>9.5%</b>	<b>0</b>	<b>0.0%</b>	<b>21</b>	<b>9.5%</b>	<b>0</b>	<b>0.0%</b>	<b>1</b>	<b>0.5%</b>	<b>0</b>	<b>0.0%</b>	<b>0</b>	<b>0.0%</b>	<b>57</b>	<b>25.9%</b>	<b>41</b>	<b>18.6%</b>	<b>2</b>	<b>0.9%</b>	<b>0</b>	<b>0.0%</b>	<b>0</b>	<b>0.0%</b>	<b>0</b>	<b>0.0%</b>	<b>0</b>	<b>0.0%</b>	<b>57</b>	<b>25.9%</b>		

# Central Region

## CYDC Reason Detained by Judicial District November 2021 New Admits



■ CENTRAL REGION, 87 New Admits

■ 1st JD, 13 New Admits

■ 5th JD, 2 New Admits

■ 2nd JD, 27 New Admits

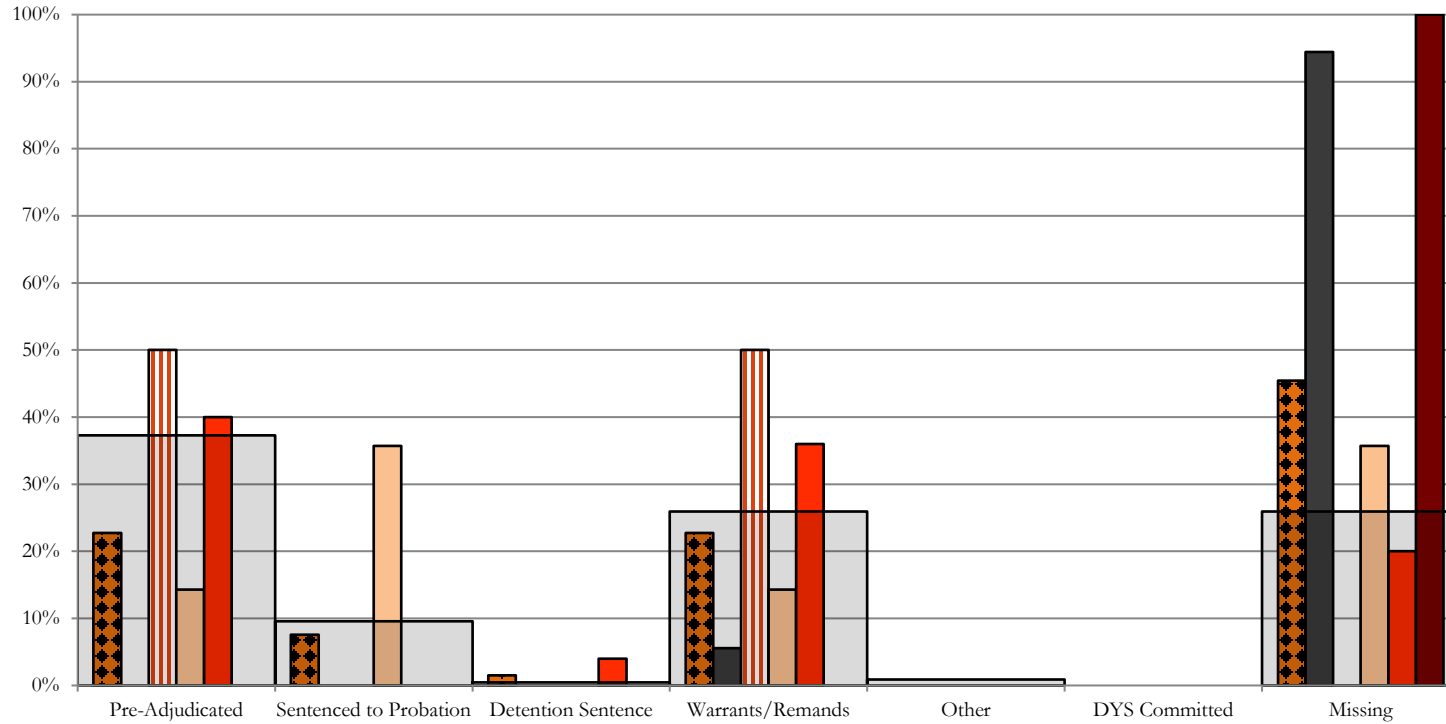
■ 18th JD, 45 New Admits

■ STATEWIDE, 220 New Admits

# Northeast Region

## CYDC Reason Detained by Judicial District

### November 2021 New Admits



■ NORTHEAST REGION, 66 New Admits

■ 8th JD, 18 New Admits

■ 13th JD, 6 New Admits

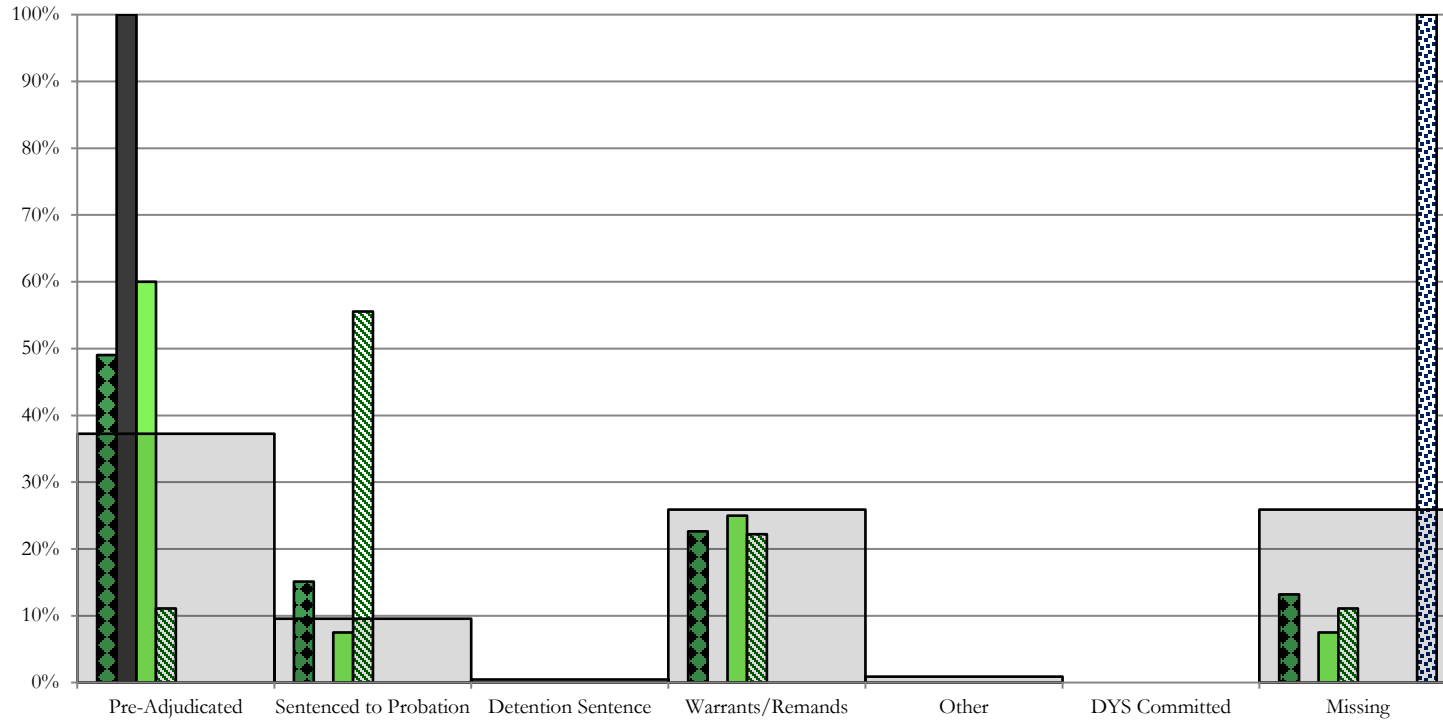
■ 17th JD, 14 New Admits

■ 19th JD, 25 New Admits

■ 20th JD, 3 New Admits

■ STATEWIDE, 220 New Admits

## Southern Region CYDC Reason Detained by Judicial District November 2021 New Admits



■ SOUTHERN REGION, 53 New Admits

■ 4th JD, 40 New Admits

■ 11th JD, 0 New Admits

■ 15th JD, 0 New Admits

■ STATEWIDE, 220 New Admits

■ 3rd JD, 1 New Admits

■ 10th JD, 9 New Admits

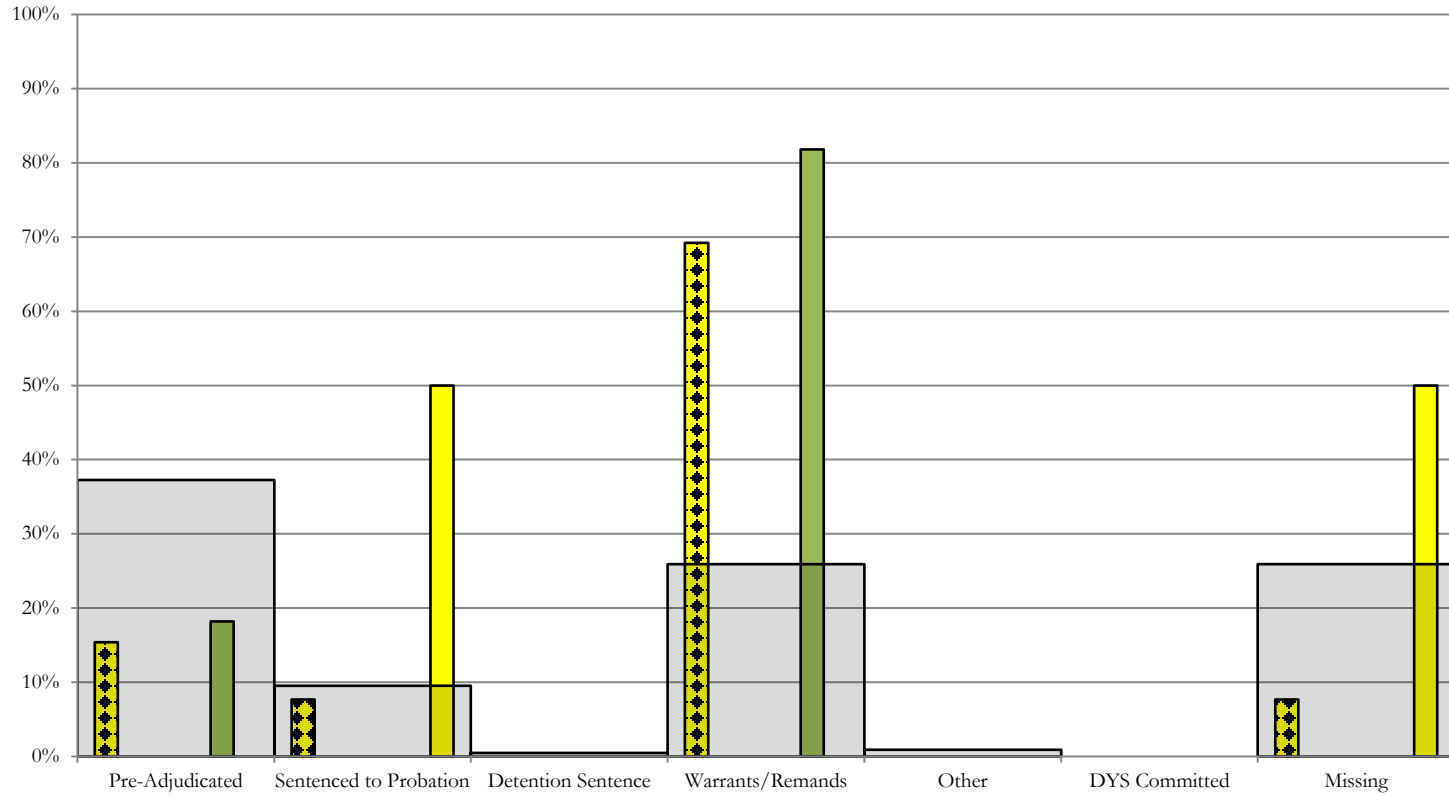
■ 12th JD, 0 New Admits

■ 16th JD, 3 New Admits



# Western Region

## CYDC Reason Detained by Judicial District November 2021 New Admits



■ WESTERN REGION, 13 New Admits

■ 7th JD, 0 New Admits

■ 14th JD, 0 New Admits

■ 22nd JD, 2 New Admits

■ 6th JD, 0 New Admits

■ 9th JD, 0 New Admits

■ 21st JD, 11 New Admits

■ STATEWIDE, 220 New Admits

# November 2021 CYDC Supplemental Report

## DYS Detention Maximum Youth Served by Judicial District <sup>1</sup>

Region	JD	Detention Capacity	Detention ADP		Maximum Youth Served on a Single Day <sup>2,3</sup>			
			November 2021	YTD	November 2021		YTD	
					Number of Youth	% of Detention Capacity	Number of Youth	% of Detention Capacity
<i>Central Region</i>								
	1st	20	16.3	12.6	18	90.0%	18	90.0%
	2nd	35	32.5	28.2	36	102.9%	36	102.9%
	5th	2	0.8	0.5	2	100.0%	4	200.0%
	18th	37	28.1	24.4	37	100.0%	37	100.0%
<b>Central Region</b>		<b>94</b>	<b>77.7</b>	<b>65.7</b>	<b>84</b>	<b>89.4%</b>	<b>84</b>	<b>89.4%</b>
<i>Northeast Region</i>								
	8th	11	10.1	7.9	14	127.3%	14	127.3%
	13th	2	3.0	1.5	5	250.0%	5	250.0%
	17th	17	11.0	11.5	14	82.4%	17	100.0%
	19th	15	9.2	8.9	12	80.0%	12	80.0%
	20th	10	5.7	4.6	8	80.0%	8	80.0%
<b>Northeast Region</b>		<b>55</b>	<b>38.9</b>	<b>34.4</b>	<b>49</b>	<b>89.1%</b>	<b>49</b>	<b>89.1%</b>
<i>Southern Region</i>								
	3rd	2	0.3	1.1	1	50.0%	3	150.0%
	4th	27	29.3	29.5	33	122.2%	35	129.6%
	10th	10	6.7	6.0	10	100.0%	11	110.0%
	11th	2	0.6	1.2	1	50.0%	3	150.0%
	12th	2	1.0	0.6	0	0.0%	1	50.0%
	15th	2	1.0	1.0	0	0.0%	2	100.0%
	16th	2	1.4	1.7	2	100.0%	3	150.0%
<b>Southern Region</b>		<b>47</b>	<b>40.3</b>	<b>41.0</b>	<b>45</b>	<b>95.7%</b>	<b>47</b>	<b>100.0%</b>
<i>Western Region</i>								
	6th	2	2.0	1.5	0	0.0%	3	150.0%
	7th	3	2.6	3.6	0	0.0%	6	200.0%
	9th	2	0.0	0.2	0	0.0%	2	100.0%
	14th	2	0.0	0.6	0	0.0%	2	100.0%
	21st	8	8.7	8.4	11	137.5%	13	162.5%
	22nd	2	0.7	1.1	1	50.0%	4	200.0%
<b>Western Region</b>		<b>19</b>	<b>13.9</b>	<b>15.3</b>	<b>17</b>	<b>89.5%</b>	<b>19</b>	<b>100.0%</b>
<i>Missing JD or Multiple JDs</i>			1.1	0.4				
<b>Statewide</b>		<b>215</b>	<b>171.9</b>	<b>156.8</b>	<b>182</b>	<b>84.7%</b>	<b>182</b>	<b>84.7%</b>

<sup>1</sup> Maximum youth served is the highest number of youth in detention on a single day during the month or fiscal year.

<sup>2</sup> Regional figures are not the sum of judicial districts, but represent the maximum count on one day for the entire region.

<sup>3</sup> State figures are not the sum of regional figures, but represent the maximum count on one day for the entire state.

November 2021  
CYDC Supplemental Report

CYDC Community ADP by Judicial District

Region	JD	Committed		Diversion		ICJ		Municipal		Pre-Adjudicated		Sentenced		VCO		Total	
		November 2021	YTD	November 2021	YTD	November 2021	YTD	November 2021	YTD	November 2021	YTD	November 2021	YTD	November 2021	YTD	November 2021	YTD
<i>Central Region</i>																	
	1st																
	2nd																
	5th																
	18th																
<b>Central Total</b>																	
<i>Northeast Region</i>																	
	8th																
	13th																
	17th																
	19th																
	20th																
<b>Northeast Total</b>																	
<i>Southern Region</i>																	
	3rd																
	4th																
	10th																
	11th																
	12th																
	15th																
	16th																
<b>Southern Total</b>																	
<i>Western Region</i>																	
	6th																
	7th																
	9th																
	14th																
	21st																
	22nd																
<b>Western Total</b>																	
<b>Statewide Total</b>																	

Data TBD and will be published at a later date;  
Trails Mod corrections in progress.