

October 2021 FY 2021-2022 CYDC JDSAG SUPPLEMENTAL REPORT

Prepared by the Division of Youth Services (DYS)
Data Management & Analysis
November 29



CO L O R A D O
Division of Youth Services
Office of Children, Youth & Families

October 2021 CYDC Supplemental Report

DYS Commitment ADP & New Commitments by Judicial District

Region	JD ¹	2022 Population Estimates ²	ADP ³		New Commitments		
			October 2021	YTD	October 2021	YTD	YTD Rate ⁴
<i>Central Region</i>							
	1st	52,891	13.5	16.5	0	0	0.0
	2nd	57,545	57.3	57.5	2	9	1.6
	5th	9,044	2.5	2.9	0	0	0.0
	18th	112,610	58.7	59.7	0	11	1.0
Central Total		232,090	131.9	136.5	2	20	0.9
<i>Northeast Region</i>							
	8th	35,419	14.2	13.1	1	6	1.7
	13th	8,500	1.0	1.0	0	0	0.0
	17th	68,397	21.7	23.4	2	6	0.9
	19th	38,823	23.9	28.9	0	2	0.5
	20th	29,677	7.0	6.7	0	1	0.3
Northeast Total		180,816	67.8	73.1	3	15	0.8
<i>Southern Region</i>							
	3rd	1,848	3.3	3.5	0	1	5.4
	4th	83,104	45.6	46.5	1	5	0.6
	10th	17,372	12.8	11.7	0	4	2.3
	11th	7,277	3.0	2.4	0	0	0.0
	12th	5,367	1.0	1.3	0	0	0.0
	15th	2,139	3.0	3.0	0	0	0.0
	16th	2,747	2.0	2.0	0	0	0.0
Southern Total		119,854	70.7	70.4	1	10	0.8
<i>Western Region</i>							
	6th	7,169	3.7	3.8	1	1	1.4
	7th	10,421	3.0	2.7	1	1	1.0
	9th	8,228	2.0	2.0	0	0	0.0
	14th	5,680	0.0	0.0	0	0	0.0
	21st	16,229	13.6	12.6	0	4	2.5
	22nd	2,972	3.1	3.6	0	0	0.0
Western Total		50,699	25.3	24.8	2	6	1.2
Statewide Total		583,459	295.8	304.8	8	51	0.9

¹ JD represents the judicial district in which the client was committed. Regional totals are a sum of their respective judicial districts. Regional totals reported here may differ slightly from those reported in the Monthly Population Report, where region is defined by active caseloads.

² Source: DOLA 2022 Estimates

³ Due to rounding, totals shown may not be an exact sum of the subtotals.

⁴ Per 10,000 youth in the population

October 2021 CYDC Supplemental Report

DYS Detention ADP and New Detention Admissions by Judicial District

Region	JD	2022 Population Estimates ¹	ADP		New Admits		YTD New Admit Rate ²
			October 2021	YTD	October 2021	YTD	
<i>Central Region</i>							
	1st	52,891	12.7	11.7	10	49	9.3
	2nd	57,545	29.1	27.2	28	136	23.6
	5th	9,044	0.1	0.5	1	6	6.6
	18th	112,610	22.3	23.4	23	119	10.6
Central Total		232,090	64.2	62.8	62	310	13.4
<i>Northeast Region</i>							
	8th	35,419	7.3	7.2	4	29	8.2
	13th	8,500	1.0	1.2	6	14	16.5
	17th	68,397	13.7	11.6	17	79	11.6
	19th	38,823	8.0	8.9	15	76	19.6
	20th	29,677	6.0	4.3	8	28	9.4
Northeast Total		180,816	36.1	33.2	50	226	12.5
<i>Southern Region</i>							
	3rd	1,848	1.4	1.3	3	7	37.9
	4th	83,104	29.3	29.5	38	156	18.8
	10th	17,372	7.6	5.8	12	37	21.3
	11th	7,277	1.6	1.3	4	11	15.1
	12th	5,367	1.0	0.4	0	2	3.7
	15th	2,139	0.8	1.1	2	2	9.4
	16th	2,747	2.2	1.7	1	7	25.5
Southern Total		119,854	44.0	41.2	60	222	18.5
<i>Western Region</i>							
	6th	7,169	2.1	1.3	1	4	5.6
	7th	10,421	2.4	3.8	1	8	7.7
	9th	8,228	0.0	0.2	0	3	3.6
	14th	5,680	0.4	0.7	0	3	5.3
	21st	16,229	9.6	8.3	18	59	36.4
	22nd	2,972	1.1	1.2	1	9	30.3
Western Total		50,699	15.7	15.6	21	86	17.0
<i>Missing JD or Multiple JDs ³</i>			<i>0.2</i>	<i>0.2</i>	<i>1</i>	<i>1</i>	
Statewide Total		583,459	160.2	153.0	194	845	14.5

¹ Source: DOLA 2022 Estimates

² Per 10,000 youth in the population

³ One newly detained youth in October 2021 was an out-of-state fugitive who was briefly detained until extradited to their home state.

October 2021 CYDC Supplemental Report

DYS Detention LOS by Judicial District				
Region	JD	YTD Detention Releases	YTD LOS (days)	LOS (days) Compared to State AVG
<i>Central Region</i>				
	1st	47	20.0	-0.9
	2nd	128	18.7	-2.2
	5th	5	10.7	-10.2
	18th	113	21.1	0.2
Central Total		293	19.7	-1.2
<i>Northeast Region</i>				
	8th	24	22.5	1.5
	13th	15	8.5	-12.4
	17th	79	12.8	-8.1
	19th	76	12.3	-8.6
	20th	25	14.1	-6.8
Northeast Total		219	13.5	-7.4
<i>Southern Region</i>				
	3rd	6	6.7	-14.2
	4th	158	24.2	3.3
	10th	33	12.2	-8.7
	11th	11	10.9	-10.0
	12th	1	16.1	-4.8
	15th	3	58.6	37.7
	16th	6	11.4	-9.5
Southern Total		218	21.3	0.4
<i>Western Region</i>				
	6th	2	1.5	-19.4
	7th	9	23.2	2.3
	9th	3	8.7	-12.2
	14th	4	30.4	9.5
	21st	48	8.4	-12.5
	22nd	8	9.8	-11.1
Western Total		74	11.4	-9.5
Statewide Total		800	20.9	-

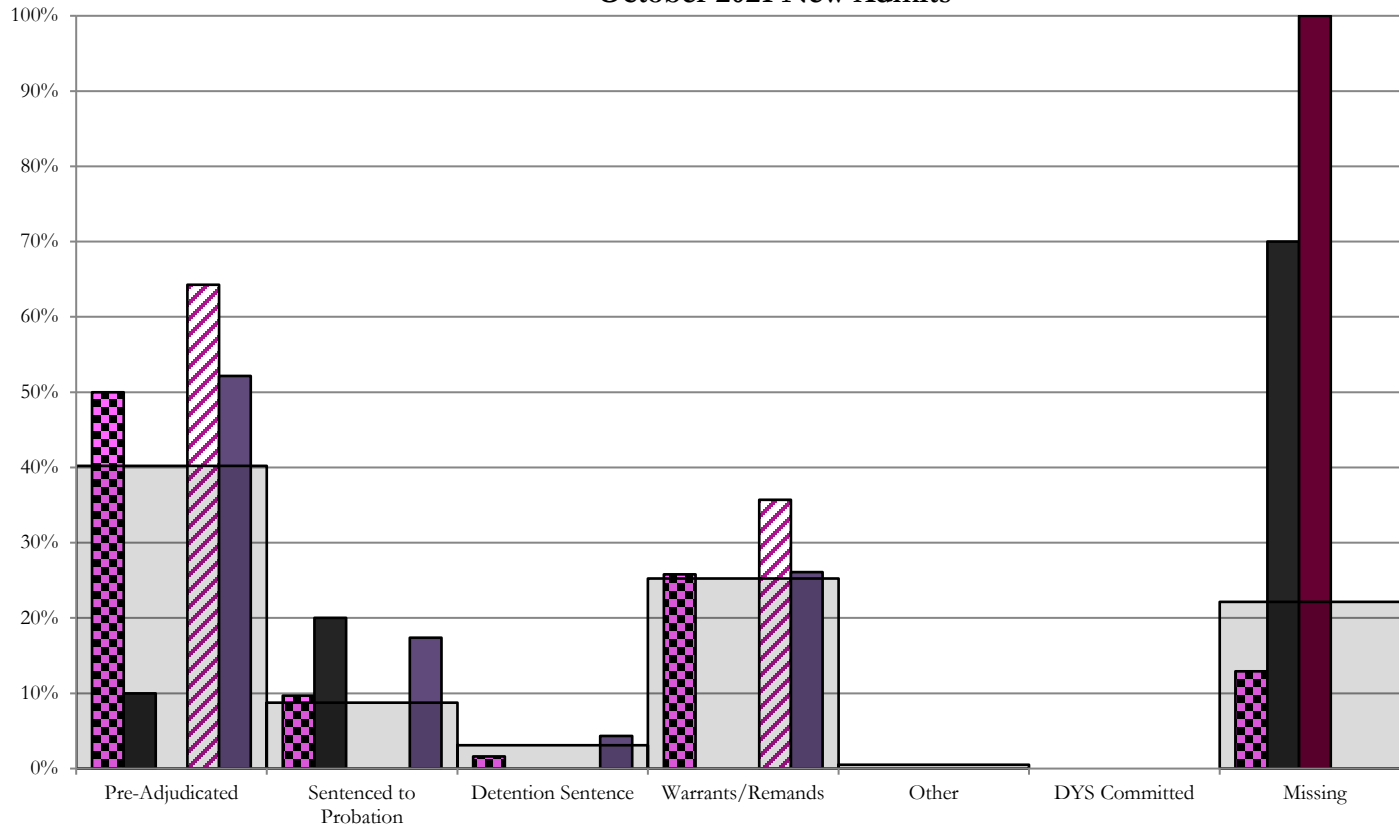
October 2021 CYDC JDSAG Supplemental Report

CYDC Reason Detained (RD) by Judicial District

Region	JD	Monthly New Admits	Pre-Adjudicated				Sentenced to Probation				Detention Sentence								Warrants/Remands				Other								DYS Committed				Missing	
			Felony		Misdemeanor		Technical Violator		New Charges		Probation Sentence		Detention Sentence		Valid Court Order (VCO) Truancy		Awaiting DSS (Social Services) Placement		Failure to Appear (FTA)		Failure to Comply (FTC)		Interstate Compact on Juveniles (ICJ) Hold		Immigration Hold		No Bond Hold		Out-of-Country Warrant		Institutional		Parole		Missing	
			#	%	#	%	#	%	#	%	#	%	#	%	#	%	#	%	#	%	#	%	#	%	#	%	#	%	#	%	#	%	#	%		
<i>Central Region</i>																																				
	1st	10	1	10.0%	0	0.0%	0	0.0%	2	20.0%	0	0.0%	0	0.0%	0	0.0%	0	0.0%	0	0.0%	0	0.0%	0	0.0%	0	0.0%	0	0.0%	0	0.0%	0	0.0%	0	0.0%	7	70.0%
	2nd	28	15	53.6%	3	10.7%	0	0.0%	0	0.0%	0	0.0%	0	0.0%	0	0.0%	0	0.0%	4	14.3%	6	21.4%	0	0.0%	0	0.0%	0	0.0%	0	0.0%	0	0.0%	0	0.0%	0	0.0%
	5th	1	0	0.0%	0	0.0%	0	0.0%	0	0.0%	0	0.0%	0	0.0%	0	0.0%	0	0.0%	0	0.0%	0	0.0%	0	0.0%	0	0.0%	0	0.0%	0	0.0%	0	0.0%	0	0.0%	1	100.0%
	18th	23	7	30.4%	5	21.7%	0	0.0%	4	17.4%	0	0.0%	1	4.3%	0	0.0%	0	0.0%	0	0.0%	6	26.1%	0	0.0%	0	0.0%	0	0.0%	0	0.0%	0	0.0%	0	0.0%	0	0.0%
Central Total		62	23	37.1%	8	12.9%	0	0.0%	6	9.7%	0	0.0%	1	1.6%	0	0.0%	0	0.0%	4	6.5%	12	19.4%	0	0.0%	0	0.0%	0	0.0%	0	0.0%	0	0.0%	0	0.0%	8	12.9%
<i>Northeast Region</i>																																				
	8th	4	0	0.0%	0	0.0%	0	0.0%	0	0.0%	0	0.0%	0	0.0%	0	0.0%	0	0.0%	0	0.0%	0	0.0%	0	0.0%	0	0.0%	0	0.0%	0	0.0%	0	0.0%	0	0.0%	4	100.0%
	13th	6	6	100.0%	0	0.0%	0	0.0%	0	0.0%	0	0.0%	0	0.0%	0	0.0%	0	0.0%	0	0.0%	0	0.0%	0	0.0%	0	0.0%	0	0.0%	0	0.0%	0	0.0%	0	0.0%	0	0.0%
	17th	17	2	11.8%	0	0.0%	0	0.0%	4	23.5%	0	0.0%	0	0.0%	0	0.0%	0	0.0%	2	11.8%	2	11.8%	0	0.0%	0	0.0%	0	0.0%	0	0.0%	0	0.0%	0	0.0%	7	41.2%
	19th	15	4	26.7%	3	20.0%	0	0.0%	1	6.7%	0	0.0%	0	0.0%	0	0.0%	0	0.0%	0	0.0%	5	33.3%	1	6.7%	0	0.0%	0	0.0%	0	0.0%	0	0.0%	0	0.0%	1	6.7%
	20th	8	4	50.0%	0	0.0%	0	0.0%	0	0.0%	0	0.0%	0	0.0%	0	0.0%	0	0.0%	0	0.0%	0	0.0%	0	0.0%	0	0.0%	0	0.0%	0	0.0%	0	0.0%	0	0.0%	4	50.0%
Northeast Total		50	16	32.0%	3	6.0%	0	0.0%	5	10.0%	0	0.0%	0	0.0%	0	0.0%	0	0.0%	2	4.0%	7	14.0%	1	2.0%	0	0.0%	0	0.0%	0	0.0%	0	0.0%	0	0.0%	16	32.0%
<i>Southern Region</i>																																				
	3rd	3	2	66.7%	0	0.0%	0	0.0%	0	0.0%	0	0.0%	0	0.0%	0	0.0%	0	0.0%	0	0.0%	0	0.0%	0	0.0%	0	0.0%	0	0.0%	0	0.0%	0	0.0%	0	0.0%	1	33.3%
	4th	38	15	39.5%	5	13.2%	0	0.0%	0	0.0%	0	0.0%	0	0.0%	1	2.6%	5	13.2%	9	23.7%	0	0.0%	0	0.0%	0	0.0%	0	0.0%	0	0.0%	0	0.0%	0	0.0%	3	7.9%
	10th	12	1	8.3%	0	0.0%	0	0.0%	4	33.3%	0	0.0%	2	16.7%	0	0.0%	0	0.0%	2	16.7%	2	16.7%	0	0.0%	0	0.0%	0	0.0%	0	0.0%	0	0.0%	0	0.0%	1	8.3%
	11th	4	0	0.0%	0	0.0%	0	0.0%	0	0.0%	0	0.0%	1	25.0%	0	0.0%	0	0.0%	0	0.0%	0	0.0%	0	0.0%	0	0.0%	0	0.0%	0	0.0%	0	0.0%	0	0.0%	3	75.0%
	12th	0	0	0.0%	0	0.0%	0	0.0%	0	0.0%	0	0.0%	0	0.0%	0	0.0%	0	0.0%	0	0.0%	0	0.0%	0	0.0%	0	0.0%	0	0.0%	0	0.0%	0	0.0%	0	0.0%	0	0.0%
	15th	2	0	0.0%	0	0.0%	0	0.0%	0	0.0%	0	0.0%	0	0.0%	0	0.0%	0	0.0%	0	0.0%	0	0.0%	0	0.0%	0	0.0%	0	0.0%	0	0.0%	0	0.0%	0	0.0%	2	100.0%
	16th	1	0	0.0%	0	0.0%	0	0.0%	0	0.0%	0	0.0%	0	0.0%	0	0.0%	0	0.0%	0	0.0%	0	0.0%	0	0.0%	0	0.0%	0	0.0%	0	0.0%	0	0.0%	1	100.0%		
Southern Total		60	18	30.0%	5	8.3%	0	0.0%	4	6.7%	0	0.0%	3	5.0%	0	0.0%	1	1.7%	7	11.7%	11	18.3%	0	0.0%	0	0.0%	0	0.0%	0	0.0%	0	0.0%	0	0.0%	11	18.3%
<i>Western Region</i>																																				
	6th	1	1	100.0%	0	0.0%	0	0.0%	0	0.0%	0	0.0%	0	0.0%	0	0.0%	0	0.0%	0	0.0%	0	0.0%	0	0.0%	0	0.0%	0	0.0%	0	0.0%	0	0.0%	0	0.0%	0	0.0%
	7th	1	0	0.0%	0	0.0%	0	0.0%	0	0.0%	0	0.0%	1	100.0%	0	0.0%	0	0.0%	0	0.0%	0	0.0%	0	0.0%	0	0.0%	0	0.0%	0	0.0%	0	0.0%	0	0.0%	0	0.0%
	9th	0	0	0.0%	0	0.0%	0	0.0%	0	0.0%	0	0.0%	0	0.0%	0	0.0%	0	0.0%	0	0.0%	0	0.0%	0	0.0%	0	0.0%	0	0.0%	0	0.0%	0	0.0%	0	0.0%	0	0.0%
	14th	0	0	0.0%	0	0.0%	0	0.0%	0	0.0%	0	0.0%	0	0.0%	0	0.0%	0	0.0%	0	0.0%	0	0.0%	0	0.0%	0	0.0%	0	0.0%	0	0.0%	0	0.0%	0	0.0%	0	0.0%
	21st	18	4	22.2%	0	0.0%	1	5.6%	0	0.0%	0	0.0%	0	0.0%	0	0.0%	0	0.0%	1	5.6%	4	22.2%	0	0.0%	0	0.0%	0	0.0%	0	0.0%	0	0.0%	0	0.0%	8	44.4%
	22nd	1	0	0.0%	0	0.0%	0	0.0%	1	100.0%	0	0.0%	0	0.0%	0	0.0%	0	0.0%	0	0.0%	0	0.0%	0	0.0%	0	0.0%	0	0.0%	0	0.0%	0	0.0%	0	0.0%	0	0.0%
Western Total		21	5	23.8%	0	0.0%	1	4.8%	1	4.8%	0	0.0%	1	4.8%	0	0.0%	0	0.0%	1	4.8%	4	19.0%	0	0.0%	0	0.0%	0	0.0%	0	0.0%	0	0.0%	0	0.0%	8	38.1%
Other Total		1	0	0.0%	0	0.0%	0	0.0%	0	0.0%	0	0.0%	0	0.0%	0	0.0%	0	0.0%	0	0.0%	1	100.0%	0	0.0%	0	0.0%	0	0.0%	0	0.0%	0	0.0%	0	0.0%	0	0.0%
Individual RD Totals		194	62	32.0%	16	8.2%	1	0.5%	16	8.2%	0	0.0%	5	2.6%	0	0.0%	1	0.5%	14	7.2%	35	18.0%	1	0.5%	0	0.0%	0	0.0%	0	0.0%	0	0.0%	0	0.0%	43	22.2%
Statewide Totals		194	78	40.2%	17	8.8%			6				3.1%			49	25.3%			1				0.5%			0	0.0%	43	22.2%						

Central Region

CYDC Reason Detained by Judicial District October 2021 New Admits



■ CENTRAL REGION, 62 New Admits

■ 5th JD, 1 New Admits

■ 18th JD, 23 New Admits

■ 1st JD, 10 New Admits

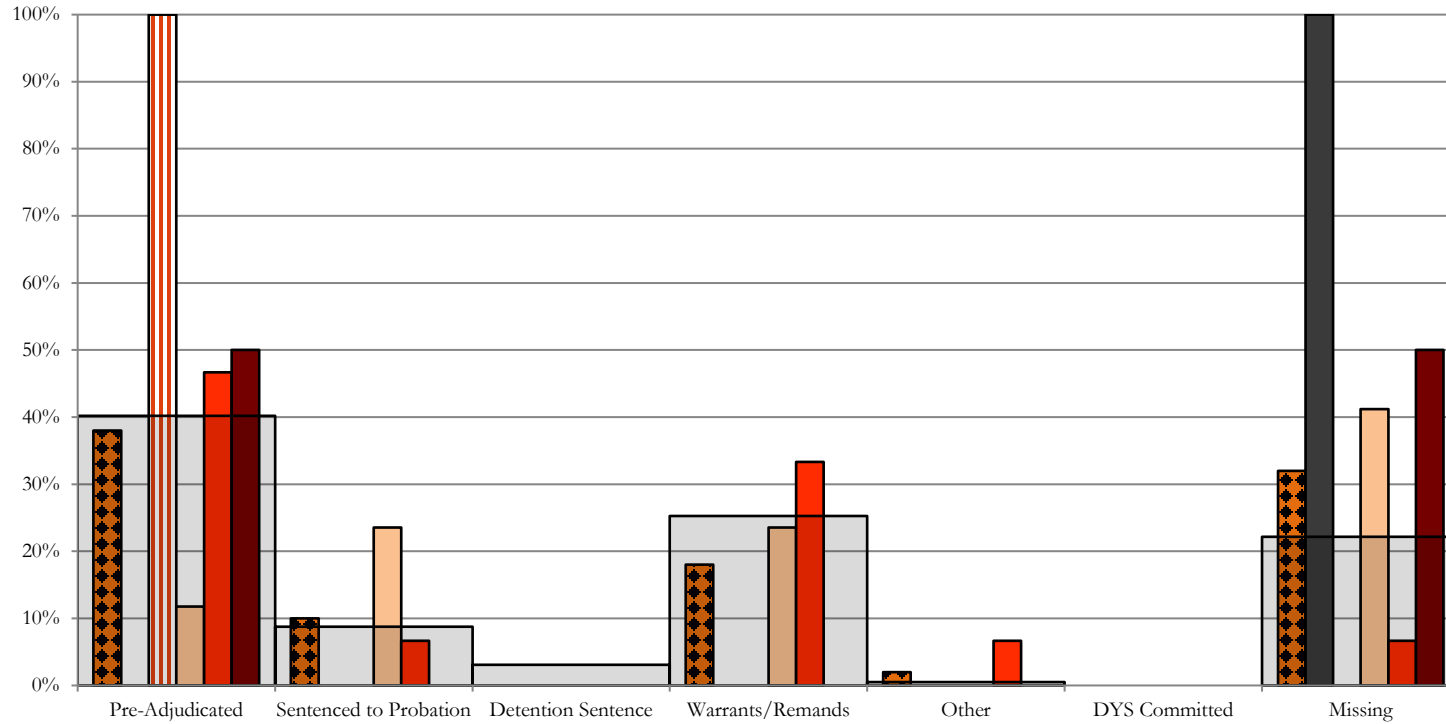
■ 2nd JD, 28 New Admits

■ STATEWIDE, 194 New Admits

Northeast Region

CYDC Reason Detained by Judicial District

October 2021 New Admits



■ NORTHEAST REGION, 50 New Admits

■ 8th JD, 4 New Admits

■ 13th JD, 6 New Admits

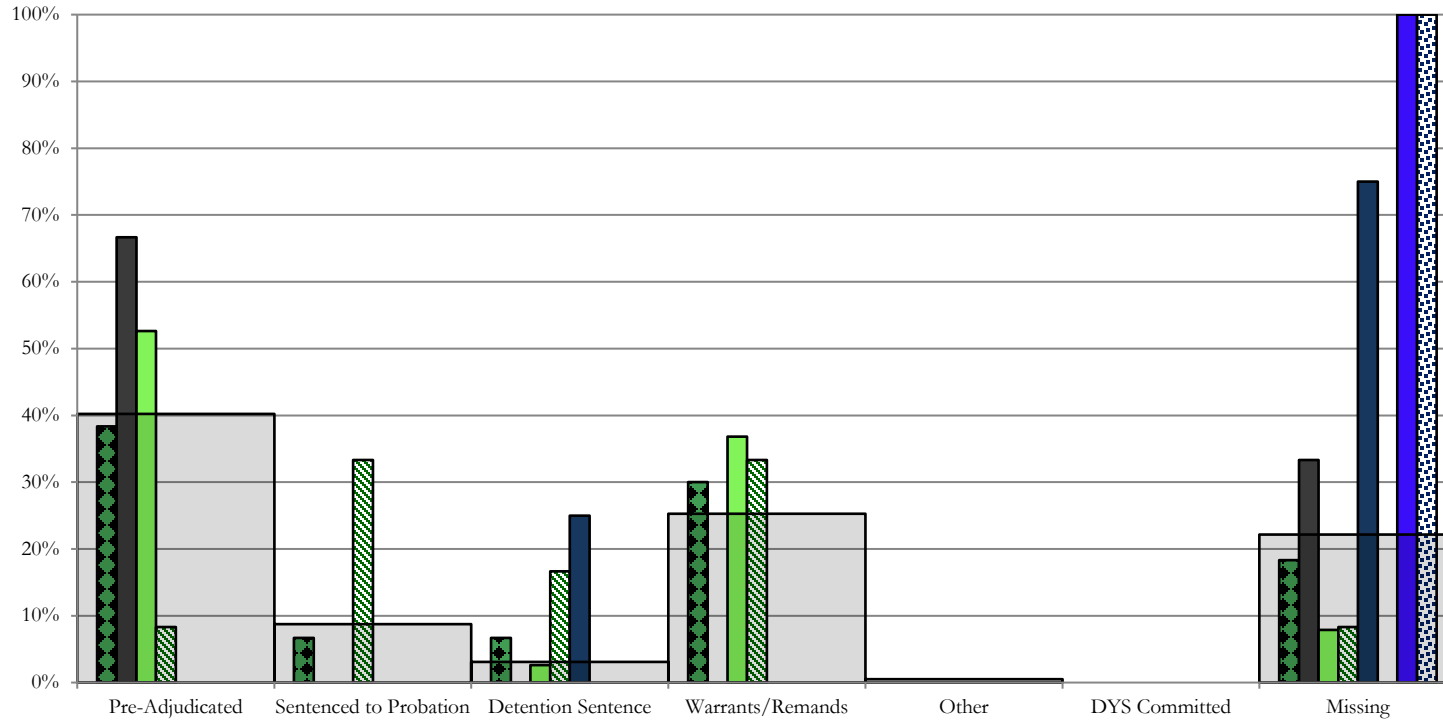
■ 17th JD, 17 New Admits

■ 19th JD, 15 New Admits

■ 20th JD, 8 New Admits

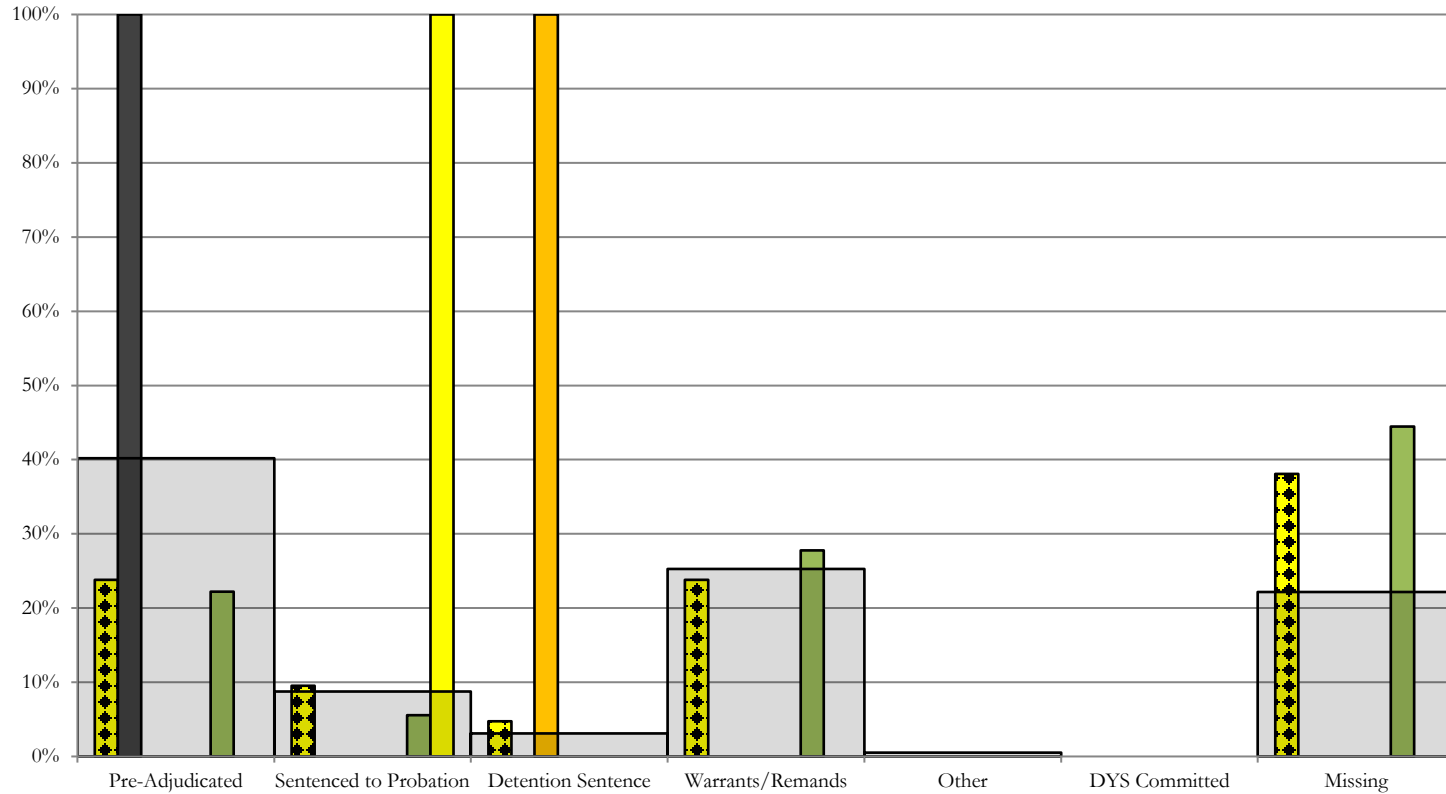
■ STATEWIDE, 194 New Admits

Southern Region CYDC Reason Detained by Judicial District October 2021 New Admits



- SOUTHERN REGION, 60 New Admits
- 4th JD, 38 New Admits
- 11th JD, 4 New Admits
- 15th JD, 2 New Admits
- STATEWIDE, 194 New Admits
- 3rd JD, 3 New Admits
- 10th JD, 12 New Admits
- 12th JD, 0 New Admits
- 16th JD, 1 New Admits

Western Region CYDC Reason Detained by Judicial District October 2021 New Admits



■ WESTERN REGION, 21 New Admits

■ 7th JD, 1 New Admits

■ 14th JD, 0 New Admits

■ 22nd JD, 1 New Admits

■ 6th JD, 1 New Admits

■ 9th JD, 0 New Admits

■ 21st JD, 18 New Admits

■ STATEWIDE, 194 New Admits

October 2021 CYDC Supplemental Report

DYS Detention Maximum Youth Served by Judicial District ¹

Region	JD	Detention Capacity	Detention ADP		Maximum Youth Served on a Single Day ^{2,3}			
			October 2021	YTD	October 2021		YTD	
					Number of Youth	% of Detention Capacity	Number of Youth	% of Detention Capacity
<i>Central Region</i>								
	1st	20	12.7	11.7	15	75.0%	16	80.0%
	2nd	35	29.1	27.2	34	97.1%	34	97.1%
	5th	2	0.1	0.5	1	50.0%	4	200.0%
	18th	37	22.3	23.4	27	73.0%	30	81.1%
Central Region		94	64.2	62.8	73	77.7%	74	78.7%
<i>Northeast Region</i>								
	8th	11	7.3	7.2	10	90.9%	11	100.0%
	13th	2	1.0	1.2	3	150.0%	4	200.0%
	17th	17	13.7	11.6	17	100.0%	18	105.9%
	19th	15	8.0	8.9	9	60.0%	12	80.0%
	20th	10	6.0	4.3	7	70.0%	7	70.0%
Northeast Region		55	36.1	33.2	38	69.1%	38	69.1%
<i>Southern Region</i>								
	3rd	2	1.4	1.3	2	100.0%	3	150.0%
	4th	27	29.3	29.5	31	114.8%	35	129.6%
	10th	10	7.6	5.8	11	110.0%	11	110.0%
	11th	2	1.6	1.3	3	150.0%	3	150.0%
	12th	2	1.0	0.4	0	0.0%	1	50.0%
	15th	2	0.8	1.1	2	100.0%	2	100.0%
	16th	2	2.2	1.7	3	150.0%	3	150.0%
Southern Region		47	44.0	41.2	47	100.0%	47	100.0%
<i>Western Region</i>								
	6th	2	2.1	1.3	3	150.0%	3	150.0%
	7th	3	2.4	3.8	3	100.0%	6	200.0%
	9th	2	0.0	0.2	0	0.0%	2	100.0%
	14th	2	0.4	0.7	0	0.0%	2	100.0%
	21st	8	9.6	8.3	13	162.5%	13	162.5%
	22nd	2	1.1	1.2	2	100.0%	4	200.0%
Western Region		19	15.7	15.6	19	100.0%	19	100.0%
<i>Missing JD or Multiple JDs</i>			0.2	0.2				
Statewide		215	160.2	153.0	170	79.1%	170	79.1%

¹ Maximum youth served is the highest number of youth in detention on a single day during the month or fiscal year.

² Regional figures are not the sum of judicial districts, but represent the maximum count on one day for the entire region.

³ State figures are not the sum of regional figures, but represent the maximum count on one day for the entire state.

October 2021
CYDC Supplemental Report

CYDC Community ADP by Judicial District

Region	JD	Committed		Diversion		ICJ		Municipal		Pre-Adjudicated		Sentenced		VCO		Total	
		October 2021	YTD	October 2021	YTD	October 2021	YTD	October 2021	YTD	October 2021	YTD	October 2021	YTD	October 2021	YTD	October 2021	YTD
<i>Central Region</i>																	
	1st																
	2nd																
	5th																
	18th																
Central Total																	
<i>Northeast Region</i>																	
	8th																
	13th																
	17th																
	19th																
	20th																
Northeast Total																	
<i>Southern Region</i>																	
	3rd																
	4th																
	10th																
	11th																
	12th																
	15th																
	16th																
Southern Total																	
<i>Western Region</i>																	
	6th																
	7th																
	9th																
	14th																
	21st																
	22nd																
Western Total																	
Statewide Total																	

Data TBD and will be published at a later date;
Trails Mod corrections in progress.