

July 2021 FY 2021-2022 CYDC JDSAG SUPPLEMENTAL REPORT

Prepared by the Division of Youth Services (DYS)
Data Management & Analysis
August 31



COLORADO
Division of Youth Services
Office of Children, Youth & Families

July 2021 CYDC Supplemental Report

DYS Commitment ADP & New Commitments by Judicial District

Region	JD ¹	2022 Population Estimates ²	ADP ³		New Commitments		
			July 2021	YTD	July 2021	YTD	YTD Rate ⁴
<i>Central Region</i>							
	1st	52,891	19.0	19.0	0	0	0.0
	2nd	57,545	55.8	55.8	3	3	0.5
	5th	9,044	3.2	3.2	0	0	0.0
	18th	112,610	59.3	59.3	5	5	0.4
Central Total		232,090	137.4	137.4	8	8	0.3
<i>Northeast Region</i>							
	8th	35,419	12.5	12.5	1	1	0.3
	13th	8,500	1.0	1.0	0	0	0.0
	17th	68,397	25.3	25.3	1	1	0.1
	19th	38,823	31.8	31.8	0	0	0.0
	20th	29,677	6.3	6.3	1	1	0.3
Northeast Total		180,816	77.0	77.0	3	3	0.2
<i>Southern Region</i>							
	3rd	1,848	3.0	3.0	0	0	0.0
	4th	83,104	46.7	46.7	4	4	0.5
	10th	17,372	11.2	11.2	0	0	0.0
	11th	7,277	2.0	2.0	0	0	0.0
	12th	5,367	2.0	2.0	0	0	0.0
	15th	2,139	3.0	3.0	0	0	0.0
	16th	2,747	2.0	2.0	0	0	0.0
Southern Total		119,854	69.9	69.9	4	4	0.3
<i>Western Region</i>							
	6th	7,169	4.0	4.0	0	0	0.0
	7th	10,421	2.0	2.0	0	0	0.0
	9th	8,228	2.0	2.0	0	0	0.0
	14th	5,680	0.0	0.0	0	0	0.0
	21st	16,229	12.4	12.4	0	0	0.0
	22nd	2,972	3.5	3.5	0	0	0.0
Western Total		50,699	23.9	23.9	0	0	0.0
Statewide Total		583,459	308.2	308.2	15	15	0.3

¹ JD represents the judicial district in which the client was committed. Regional totals are a sum of their respective judicial districts. Regional totals reported here may differ slightly from those reported in the Monthly Population Report, where region is defined by active caseloads.

² Source: DOLA 2022 Estimates

³ Due to rounding, totals shown may not be an exact sum of the subtotals.

⁴ Per 10,000 youth in the population

July 2021 CYDC Supplemental Report

DYS Detention ADP and New Detention Admissions by Judicial District

Region	JD	2022 Population Estimates ¹	ADP		New Admits		
			July 2021	YTD	July 2021	YTD	YTD New Admit Rate ²
<i>Central Region</i>							
	1st	52,891	7.7	7.7	12	12	2.3
	2nd	57,545	27.2	27.2	33	33	5.7
	5th	9,044	0.0	0.0	0	0	0.0
	18th	112,610	20.2	20.2	30	30	2.7
Central Total		232,090	55.1	55.1	75	75	3.2
<i>Northeast Region</i>							
	8th	35,419	3.8	3.8	9	9	2.5
	13th	8,500	1.4	1.4	4	4	4.7
	17th	68,397	11.4	11.4	23	23	3.4
	19th	38,823	7.6	7.6	28	28	7.2
	20th	29,677	3.6	3.6	11	11	3.7
Northeast Total		180,816	27.8	27.8	75	75	4.1
<i>Southern Region</i>							
	3rd	1,848	1.0	1.0	0	0	0.0
	4th	83,104	28.1	28.1	37	37	4.5
	10th	17,372	5.0	5.0	12	12	6.9
	11th	7,277	1.4	1.4	5	5	6.9
	12th	5,367	0.0	0.0	0	0	0.0
	15th	2,139	1.7	1.7	0	0	0.0
	16th	2,747	1.2	1.2	2	2	7.3
Southern Total		119,854	38.4	38.4	56	56	4.7
<i>Western Region</i>							
	6th	7,169	0.0	0.0	0	0	0.0
	7th	10,421	5.0	5.0	2	2	1.9
	9th	8,228	0.0	0.0	0	0	0.0
	14th	5,680	0.8	0.8	1	1	1.8
	21st	16,229	6.0	6.0	14	14	8.6
	22nd	2,972	1.4	1.4	5	5	16.8
Western Total		50,699	13.2	13.2	22	22	4.3
<i>Missing JD or Multiple JDs</i>			8.5	8.5			
Statewide Total		583,459	143.1	143.1	228	228	3.9

¹ Source: DOLA 2022 Estimates

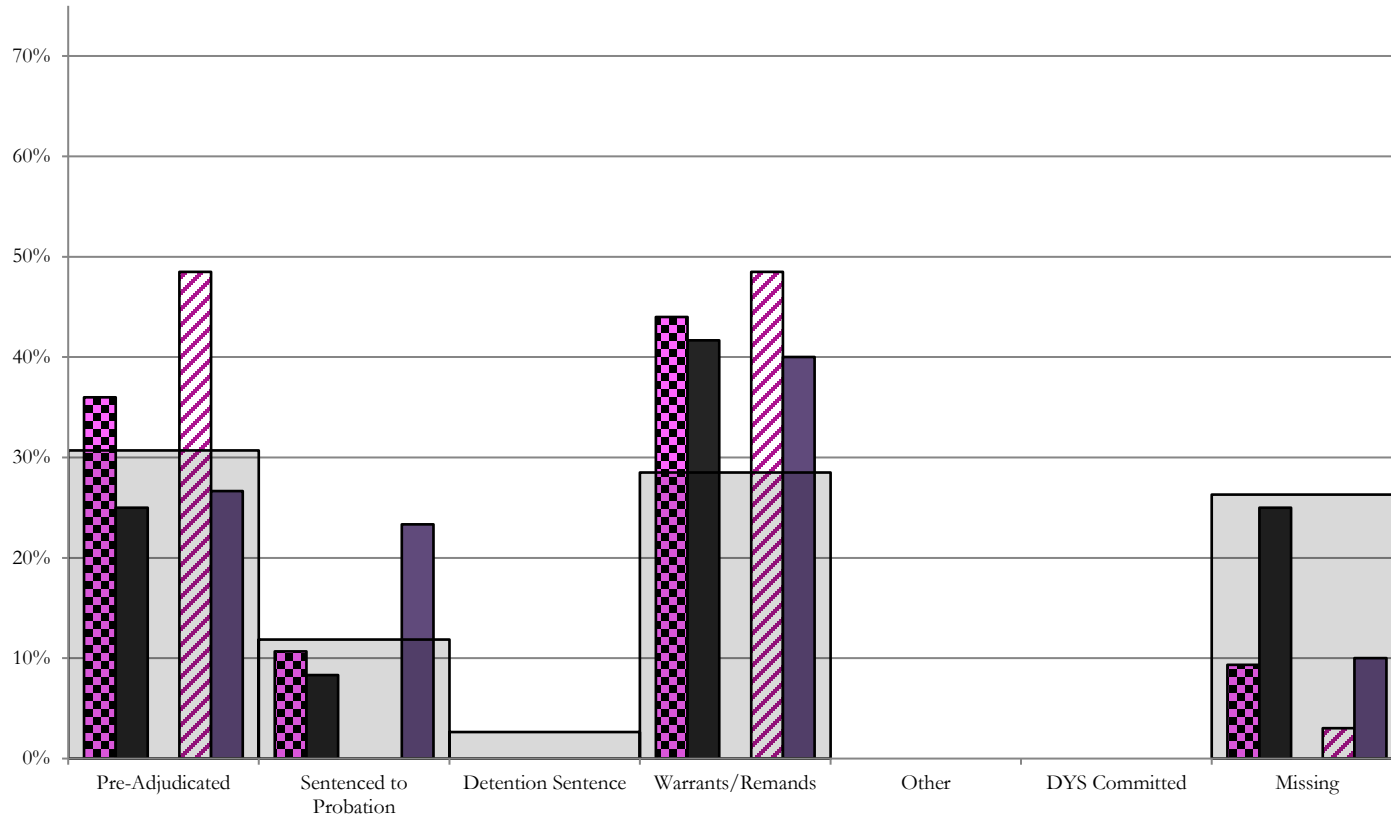
² Per 10,000 youth in the population

July 2021 CYDC Supplemental Report

DYS Detention LOS by Judicial District				
Region	JD	YTD Detention Releases	YTD LOS (days)	LOS (days) Compared to State AVG
<i>Central Region</i>				
	1st	9	54.8	36.1
	2nd	28	10.9	-7.7
	5th	0	0.0	-18.6
	18th	21	18.2	-0.4
Central Total		58	20.4	1.7
<i>Northeast Region</i>				
	8th	3	69.1	50.5
	13th	4	10.8	-7.8
	17th	16	19.4	0.8
	19th	11	16.4	-2.2
	20th	11	5.1	-13.6
Northeast Total		45	17.7	-0.9
<i>Southern Region</i>				
	3rd	0	0.0	-18.6
	4th	40	27.3	8.7
	10th	10	15.9	-2.8
	11th	6	8.8	-9.8
	12th	0	0.0	-18.6
	15th	1	30.7	12.1
	16th	2	3.1	-15.5
Southern Total		59	22.7	4.1
<i>Western Region</i>				
	6th	0	0.0	-18.6
	7th	2	56.0	37.3
	9th	0	0.0	-18.6
	14th	2	29.4	10.7
	21st	10	7.8	-10.8
	22nd	3	2.8	-15.9
Western Total		17	15.1	-3.5
Statewide Total		209	18.6	-

Central Region

CYDC Reason Detained by Judicial District July 2021 New Admits



■ CENTRAL REGION, 75 New Admits

■ 1st JD, 12 New Admits

■ 5th JD, 0 New Admits

■ 2nd JD, 33 New Admits

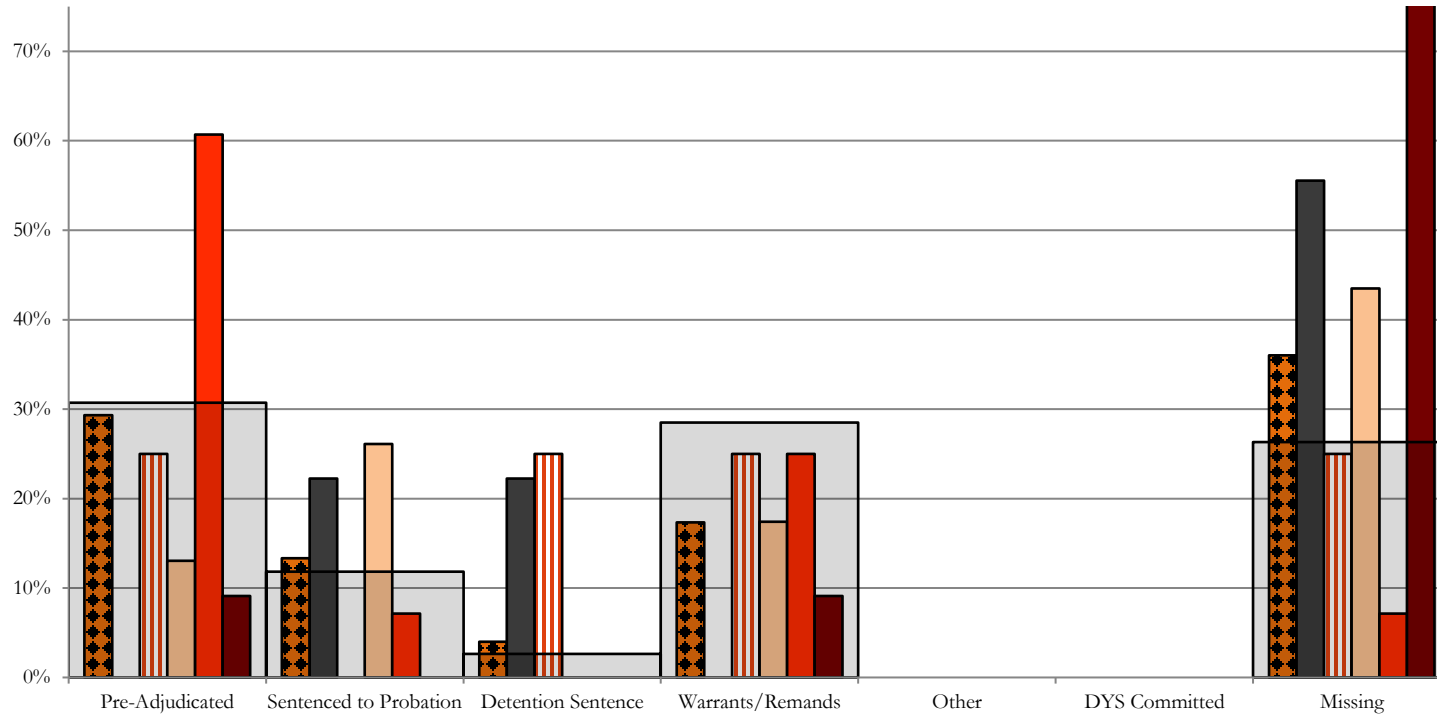
■ 18th JD, 30 New Admits

■ STATEWIDE, 228 New Admits

Northeast Region

CYDC Reason Detained by Judicial District

July 2021 New Admits



■ NORTHEAST REGION, 75 New Admits

■ 8th JD, 9 New Admits

■ 13th JD, 4 New Admits

■ 17th JD, 23 New Admits

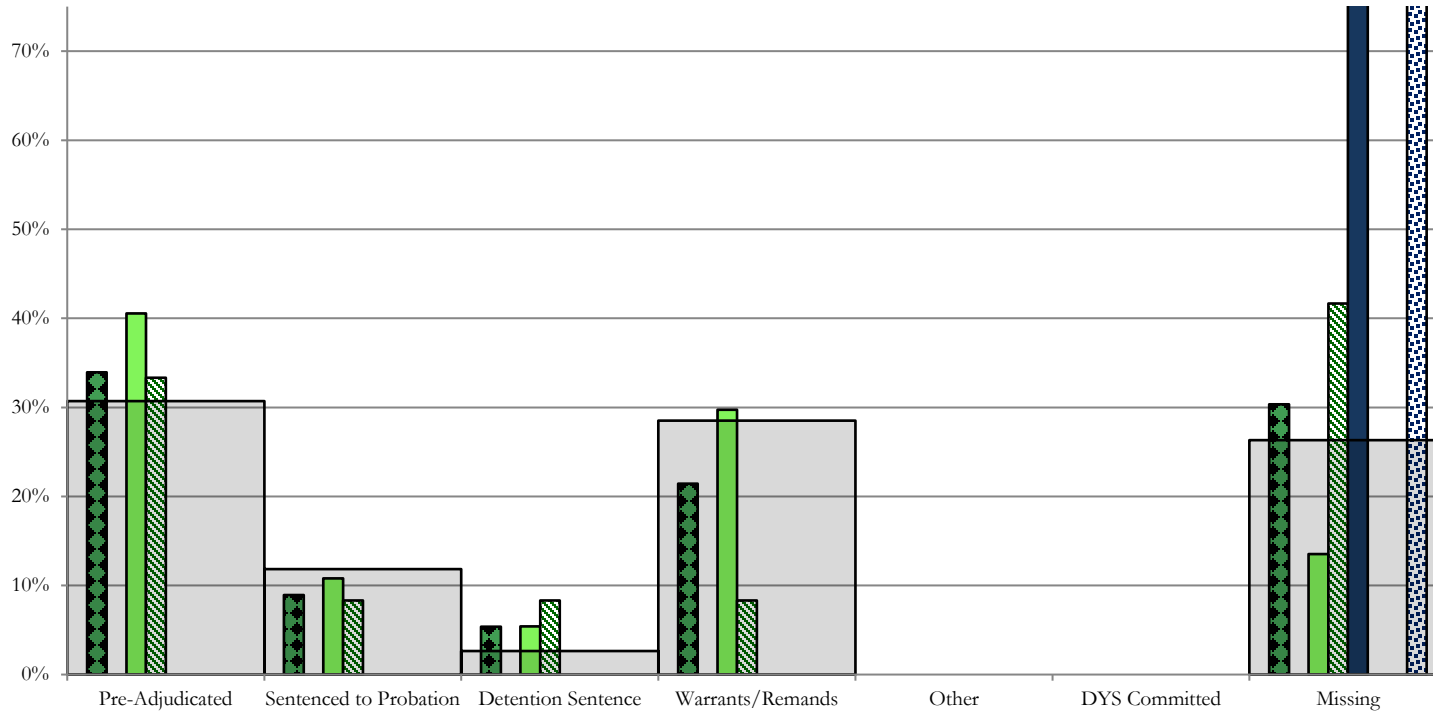
■ 19th JD, 28 New Admits

■ 20th JD, 11 New Admits

■ STATEWIDE, 228 New Admits

Southern Region

CYDC Reason Detained by Judicial District July 2021 New Admits

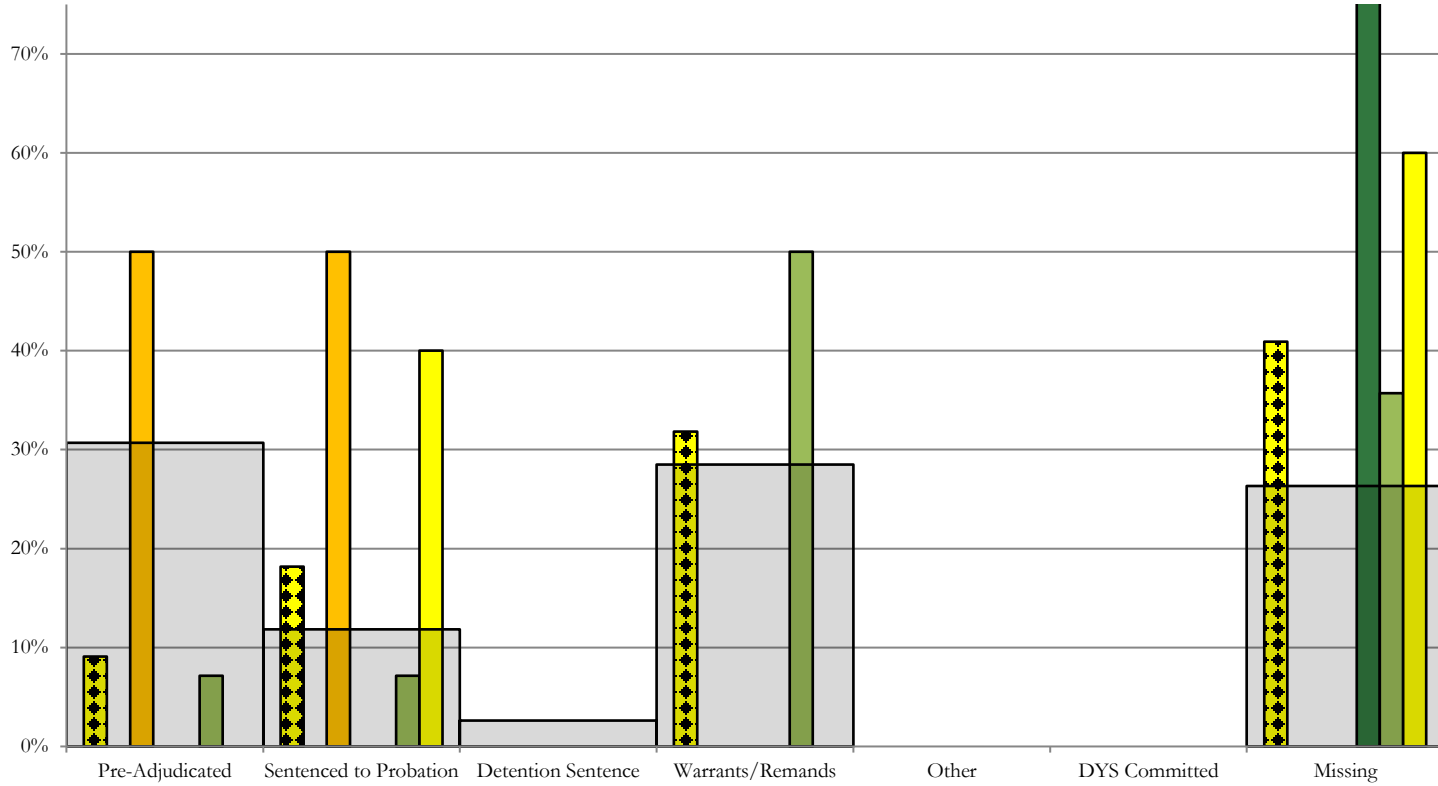


- SOUTHERN REGION, 56 New Admits
- 4th JD, 37 New Admits
- 11th JD, 5 New Admits
- 15th JD, 0 New Admits
- STATEWIDE, 228 New Admits
- 3rd JD, 0 New Admits
- 10th JD, 12 New Admits
- 12th JD, 0 New Admits
- 16th JD, 2 New Admits

Western Region

CYDC Reason Detained by Judicial District

July 2021 New Admits



■ WESTERN REGION, 22 New Admits

■ 7th JD, 2 New Admits

■ 14th JD, 1 New Admits

■ 22nd JD, 5 New Admits

■ 6th JD, 0 New Admits

■ 9th JD, 0 New Admits

■ 21st JD, 14 New Admits

■ STATEWIDE, 228 New Admits

July 2021 CYDC Supplemental Report

DYS Detention Maximum Youth Served by Judicial District ¹

Region	JD	Detention Capacity	Detention ADP		Maximum Youth Served on a Single Day ^{2,3}			
			July 2021	YTD	July 2021		YTD	
					Number of Youth	% of Detention Capacity	Number of Youth	% of Detention Capacity
<i>Central Region</i>								
	1st	20	7.7	7.7	13	65.0%	13	65.0%
	2nd	35	27.2	27.2	31	88.6%	31	88.6%
	5th	2	0.0	0.0	0	0.0%	0	0.0%
	18th	37	20.2	20.2	24	64.9%	24	64.9%
Central Region		94	55.1	55.1	66	70.2%	66	70.2%
<i>Northeast Region</i>								
	8th	11	3.8	3.8	8	72.7%	8	72.7%
	13th	2	1.4	1.4	4	200.0%	4	200.0%
	17th	17	11.4	11.4	17	100.0%	17	100.0%
	19th	15	7.6	7.6	12	80.0%	12	80.0%
	20th	10	3.6	3.6	5	50.0%	5	50.0%
Northeast Region		55	27.8	27.8	38	69.1%	38	69.1%
<i>Southern Region</i>								
	3rd	2	1.0	1.0	1	50.0%	1	50.0%
	4th	27	28.1	28.1	35	129.6%	35	129.6%
	10th	10	5.0	5.0	7	70.0%	7	70.0%
	11th	2	1.4	1.4	3	150.0%	3	150.0%
	12th	2	0.0	0.0	0	0.0%	0	0.0%
	15th	2	1.7	1.7	2	100.0%	2	100.0%
	16th	2	1.2	1.2	2	100.0%	2	100.0%
Southern Region		47	38.4	38.4	43	91.5%	43	91.5%
<i>Western Region</i>								
	6th	2	0.0	0.0	0	0.0%	0	0.0%
	7th	3	5.0	5.0	6	200.0%	6	200.0%
	9th	2	0.0	0.0	0	0.0%	0	0.0%
	14th	2	0.8	0.8	1	50.0%	1	50.0%
	21st	8	6.0	6.0	8	100.0%	8	100.0%
	22nd	2	1.4	1.4	4	200.0%	4	200.0%
Western Region		19	13.2	13.2	17	89.5%	17	89.5%
<i>Missing JD or Multiple JDs</i>			8.5	8.5				
Statewide		215	143.1	143.1	152	70.7%	152	70.7%

¹ Maximum youth served is the highest number of youth in detention on a single day during the month or fiscal year.

² Regional figures are not the sum of judicial districts, but represent the maximum count on one day for the entire region.

³ State figures are not the sum of regional figures, but represent the maximum count on one day for the entire state.

July 2021
CYDC Supplemental Report

CYDC Community ADP by Judicial District

Region	JD	Committed		Diversion		ICJ		Municipal		Pre-Adjudicated		Sentenced		VCO		Total	
		July 2021	YTD	July 2021	YTD	July 2021	YTD	July 2021	YTD	July 2021	YTD	July 2021	YTD	July 2021	YTD	July 2021	YTD
<i>Central Region</i>																	
	1st																
	2nd																
	5th																
	18th																
Central Total																	
<i>Northeast Region</i>																	
	8th																
	13th																
	17th																
	19th																
	20th																
Northeast Total																	
<i>Southern Region</i>																	
	3rd																
	4th																
	10th																
	11th																
	12th																
	15th																
	16th																
Southern Total																	
<i>Western Region</i>																	
	6th																
	7th																
	9th																
	14th																
	21st																
	22nd																
Western Total																	
Statewide Total																	

Data TBD and will be published at a later date;
Trails Mod corrections in progress.