

# June 2021\*

## FY 2020-2021

### CYDC JDSAG SUPPLEMENTAL REPORT

---

Prepared by the Division of Youth Services (DYS)  
Data Management & Analysis  
August 2, 2021

\* Following the initial announcement of positive cases of COVID-19 in Colorado on March 5th 2020, data presented in this report largely reflect COVID-19 response and Executive Order (EO) compliance across the detained, committed, and paroled populations. The statewide detention bed capacity was temporarily reduced to 200 on April 21st, 2020, then to 188 on October 25th, 2020; due to the temporary nature of the reduction, DYS continues to utilize statutory detention bed capacity and allocations for FY 2020-21 within this report (327). Commitment population reductions and Parole population increases are a direct result of the Division's EO response, releasing an unprecedented number of youth from residential placement to parole.



**COLORADO**  
**Division of Youth Services**  
Office of Children, Youth & Families

# June 2021 CYDC Supplemental Report

## DYC Commitment ADP & New Commitments by Judicial District

Region	JD <sup>1</sup>	2021 Population Estimates <sup>2</sup>	ADP <sup>3</sup>		New Commitments		
			June 2021	YTD	June 2021	YTD	YTD Rate <sup>4</sup>
<i>Central Region</i>							
	1st	54,247	20.8	31.3	0	8	1.5
	2nd	57,556	55.7	57.0	1	30	5.2
	5th	9,148	3.5	3.1	1	2	2.2
	18th	114,514	60.3	61.0	3	33	2.9
<b>Central Total</b>		<b>235,465</b>	<b>140.2</b>	<b>152.4</b>	<b>5</b>	<b>73</b>	<b>3.1</b>
<i>Northeast Region</i>							
	8th	35,120	13.3	15.8	1	14	4.0
	13th	8,520	1.3	2.6	0	2	2.3
	17th	69,653	27.9	31.3	0	12	1.7
	19th	39,126	33.4	30.7	0	31	7.9
	20th	30,663	6.3	6.2	0	3	1.0
<b>Northeast Total</b>		<b>183,082</b>	<b>82.2</b>	<b>86.6</b>	<b>1</b>	<b>62</b>	<b>3.4</b>
<i>Southern Region</i>							
	3rd	1,875	3.0	2.9	0	0	0.0
	4th	84,107	47.1	52.2	4	22	2.6
	10th	17,817	10.2	8.8	1	8	4.5
	11th	7,367	1.9	3.1	0	1	1.4
	12th	5,455	1.6	1.1	1	1	1.8
	15th	2,111	4.0	3.5	0	1	4.7
	16th	2,836	2.0	1.5	0	1	3.5
<b>Southern Total</b>		<b>121,568</b>	<b>69.8</b>	<b>73.2</b>	<b>6</b>	<b>34</b>	<b>2.8</b>
<i>Western Region</i>							
	6th	7,430	3.6	2.0	0	3	4.0
	7th	10,673	2.6	2.5	0	3	2.8
	9th	8,519	2.0	2.1	0	1	1.2
	14th	5,788	0.0	0.0	0	0	0.0
	21st	16,466	13.1	18.4	0	9	5.5
	22nd	3,034	4.0	4.1	0	0	0.0
<b>Western Total</b>		<b>51,910</b>	<b>25.2</b>	<b>29.2</b>	<b>0</b>	<b>16</b>	<b>3.1</b>
<b>Statewide Total</b>		<b>592,025</b>	<b>317.3</b>	<b>341.2</b>	<b>12</b>	<b>185</b>	<b>3.1</b>

<sup>1</sup> JD represents the judicial district in which the client was committed. Regional totals are a sum of their respective judicial districts. Regional totals reported here may differ slightly from those reported in the Monthly Population Report, where region is defined by active caseloads.

<sup>2</sup> Source: DOLA 2015 Estimates

<sup>3</sup> Due to rounding, totals shown may not be an exact sum of the subtotals.

<sup>4</sup> Per 10,000 youth in the population

# June 2021 CYDC Supplemental Report

DYC Detention ADP and New Detention Admissions by Judicial District							
Region	JD	2021 Population Estimates <sup>1</sup>	ADP		New Admits		YTD New Admit Rate <sup>2</sup>
			June 2021	YTD	June 2021	YTD	
<i>Central Region</i>							
	1st	54,247	10.5	12.5	13	189	34.8
	2nd	57,556	26.1	28.8	28	333	57.9
	5th	9,148	0.1	0.4	0	10	10.9
	18th	114,514	19.5	23.4	20	336	29.3
<b>Central Total</b>		<b>235,465</b>	<b>56.1</b>	<b>65.0</b>	<b>61</b>	<b>868</b>	<b>36.9</b>
<i>Northeast Region</i>							
	8th	35,120	4.4	5.4	5	91	25.9
	13th	8,520	2.9	1.8	8	50	58.7
	17th	69,653	12.8	13.3	20	202	29.0
	19th	39,126	5.4	8.2	9	206	52.7
	20th	30,663	3.0	2.2	9	70	22.8
<b>Northeast Total</b>		<b>183,082</b>	<b>28.6</b>	<b>31.0</b>	<b>51</b>	<b>619</b>	<b>33.8</b>
<i>Southern Region</i>							
	3rd	1,875	1.3	1.7	0	8	42.7
	4th	84,107	30.4	30.3	33	428	50.9
	10th	17,817	4.6	4.5	5	81	45.5
	11th	7,367	2.0	0.8	0	21	28.5
	12th	5,455	0.4	0.7	0	7	12.8
	15th	2,111	1.3	0.8	1	14	66.3
	16th	2,836	0.7	0.5	1	6	21.2
<b>Southern Total</b>		<b>121,568</b>	<b>40.6</b>	<b>39.2</b>	<b>40</b>	<b>565</b>	<b>46.5</b>
<i>Western Region</i>							
	6th	7,430	0.0	1.0	0	12	16.2
	7th	10,673	3.7	2.0	3	30	28.1
	9th	8,519	0.1	0.5	0	14	16.4
	14th	5,788	1.0	0.3	0	3	5.2
	21st	16,466	6.6	6.0	10	175	106.3
	22nd	3,034	0.0	0.2	0	9	29.7
<b>Western Total</b>		<b>51,910</b>	<b>11.3</b>	<b>9.9</b>	<b>13</b>	<b>243</b>	<b>46.8</b>
<i>Missing JD or Multiple JDs</i>			<i>0.5</i>	<i>1.2</i>			
<b>Statewide Total</b>		<b>592,025</b>	<b>137.1</b>	<b>146.2</b>	<b>165</b>	<b>2,295</b>	<b>38.8</b>

<sup>1</sup> Source: DOLA 2021 Estimates

<sup>2</sup> Per 10,000 youth in the population

# June 2021 CYDC Supplemental Report

DYC Detention LOS by Judicial District				
Region	JD	YTD Detention Releases	YTD LOS (days)	LOS (days) Compared to State AVG
<i>Central Region</i>				
	1st	184	20.1	-2.6
	2nd	332	25.6	2.9
	5th	9	23.5	0.7
	18th	352	30.3	7.5
<b>Central Total</b>		<b>877</b>	<b>26.3</b>	<b>3.6</b>
<i>Northeast Region</i>				
	8th	90	19.8	-2.9
	13th	49	14.1	-8.6
	17th	204	23.7	0.9
	19th	205	13.7	-9.0
	20th	68	12.5	-10.3
<b>Northeast Total</b>		<b>616</b>	<b>17.8</b>	<b>-4.9</b>
<i>Southern Region</i>				
	3rd	8	22.2	-0.6
	4th	430	21.6	-1.2
	10th	78	16.8	-5.9
	11th	20	9.4	-13.4
	12th	8	65.2	42.4
	15th	12	12.6	-10.1
	16th	5	33.7	10.9
<b>Southern Total</b>		<b>561</b>	<b>21.0</b>	<b>-1.7</b>
<i>Western Region</i>				
	6th	10	28.5	5.7
	7th	26	14.1	-8.7
	9th	14	11.1	-11.7
	14th	2	43.1	20.4
	21st	169	9.3	-13.5
	22nd	10	3.8	-18.9
<b>Western Total</b>		<b>231</b>	<b>10.8</b>	<b>-12.0</b>
<b>Statewide Total</b>		<b>2,301</b>	<b>22.8</b>	<b>-</b>

## June 2021 CYDC Supplemental Report

### Year-to-Date DYS Detention ADP & Ethnicity by Judicial District

Region	JD	Anglo-American		African-American		Hispanic / Latino		Native-American		Asian-American		Other		TOTAL	
		ADP	%	ADP	%	ADP	%	ADP	%	ADP	%	ADP	%	ADP	%
<b>Central</b>															
	1st	3.9	31.6%	2.4	18.9%	5.6	45.3%	0.0	0.1%	0.4	2.9%	0.1	1.1%	12.5	100%
	2nd	3.5	12.3%	12.0	41.6%	11.3	39.3%	0.2	0.8%	1.1	3.9%	0.6	2.2%	28.8	100%
	5th	0.0	8.7%	0.0	0.0%	0.4	91.3%	0.0	0.0%	0.0	0.0%	0.0	0.0%	0.4	100%
	18th	6.9	29.5%	9.0	38.5%	4.8	20.7%	0.1	0.5%	1.3	5.7%	1.2	5.2%	23.4	100%
<b>Central Total</b>		<b>14.4</b>	<b>20.5%</b>	<b>23.3</b>	<b>24.8%</b>	<b>22.2</b>	<b>49.2%</b>	<b>0.4</b>	<b>0.4%</b>	<b>2.8</b>	<b>3.1%</b>	<b>2.0</b>	<b>2.1%</b>	<b>65.0</b>	<b>100%</b>
<b>Northeast</b>															
	8th	2.5	46.8%	1.8	32.9%	1.1	20.0%	0.0	0.0%	0.0	0.0%	0.0	0.4%	5.4	100%
	13th	1.3	68.4%	0.1	6.6%	0.5	25.0%	0.0	0.0%	0.0	0.0%	0.0	0.0%	1.8	100%
	17th	3.8	28.3%	0.9	7.1%	7.7	58.2%	0.0	0.1%	0.0	0.1%	0.8	6.2%	13.3	100%
	19th	3.9	46.8%	0.5	5.7%	3.6	44.0%	0.1	0.7%	0.1	1.4%	0.1	1.4%	8.2	100%
	20th	1.4	65.6%	0.1	4.0%	0.5	21.0%	0.0	1.9%	0.0	0.0%	0.2	7.6%	2.2	100%
<b>Northeast Total</b>		<b>12.8</b>	<b>51.2%</b>	<b>3.4</b>	<b>11.3%</b>	<b>13.4</b>	<b>33.6%</b>	<b>0.1</b>	<b>0.5%</b>	<b>0.1</b>	<b>0.3%</b>	<b>1.1</b>	<b>3.1%</b>	<b>31.0</b>	<b>100%</b>
<b>Southern</b>															
	3rd	1.3	75.1%	0.0	0.0%	0.4	24.9%	0.0	0.0%	0.0	0.0%	0.0	0.0%	1.7	100%
	4th	13.6	45.0%	8.9	29.5%	6.6	21.7%	0.0	0.0%	0.1	0.3%	1.1	3.6%	30.3	100%
	10th	0.4	9.2%	0.1	2.4%	4.0	88.4%	0.0	0.0%	0.0	0.0%	0.0	0.0%	4.5	100%
	11th	0.5	58.2%	0.1	12.6%	0.2	29.3%	0.0	0.0%	0.0	0.0%	0.0	0.0%	0.8	100%
	12th	0.1	8.3%	0.0	2.1%	0.6	89.6%	0.0	0.0%	0.0	0.0%	0.0	0.0%	0.6	100%
	15th	0.5	61.5%	0.0	5.5%	0.3	33.0%	0.0	0.0%	0.0	0.0%	0.0	0.0%	0.8	100%
	16th	0.1	10.7%	0.0	0.0%	0.5	89.3%	0.0	0.0%	0.0	0.0%	0.0	0.0%	0.5	100%
<b>Southern Total</b>		<b>16.3</b>	<b>38.3%</b>	<b>9.2</b>	<b>7.4%</b>	<b>12.5</b>	<b>53.7%</b>	<b>0.0</b>	<b>0.0%</b>	<b>0.1</b>	<b>0.0%</b>	<b>1.1</b>	<b>0.5%</b>	<b>39.2</b>	<b>100%</b>
<b>Western</b>															
	6th	0.9	88.3%	0.0	0.0%	0.0	0.0%	0.1	10.3%	0.0	0.0%	0.0	1.4%	1.0	100%
	7th	1.4	70.8%	0.0	0.5%	0.6	28.7%	0.0	0.0%	0.0	0.0%	0.0	0.0%	2.0	100%
	9th	0.3	62.5%	0.0	0.0%	0.2	34.3%	0.0	3.2%	0.0	0.0%	0.0	0.0%	0.5	100%
	14th	0.3	97.4%	0.0	0.0%	0.0	2.6%	0.0	0.0%	0.0	0.0%	0.0	0.0%	0.3	100%
	21st	4.7	78.3%	0.4	6.3%	0.9	15.4%	0.0	0.0%	0.0	0.0%	0.0	0.0%	6.0	100%
	22nd	0.1	86.5%	0.0	0.0%	0.0	0.0%	0.0	8.2%	0.0	5.3%	0.0	0.0%	0.2	100%
<b>Western Total</b>		<b>7.7</b>	<b>80.6%</b>	<b>0.4</b>	<b>1.1%</b>	<b>1.7</b>	<b>13.5%</b>	<b>0.1</b>	<b>3.6%</b>	<b>0.0</b>	<b>0.9%</b>	<b>0.0</b>	<b>0.2%</b>	<b>9.9</b>	<b>100%</b>
Missing JD Data		0.3		0.4		0.4		0.0		0.0		0.0		1.1	
<b>Statewide Total</b>		<b>51.6</b>	<b>35.3%</b>	<b>36.7</b>	<b>25.1%</b>	<b>50.1</b>	<b>34.2%</b>	<b>0.6</b>	<b>0.4%</b>	<b>3.0</b>	<b>2.1%</b>	<b>4.2</b>	<b>2.9%</b>	<b>146.2</b>	<b>100%</b>

## June 2021 CYDC JDSAG Supplemental Report

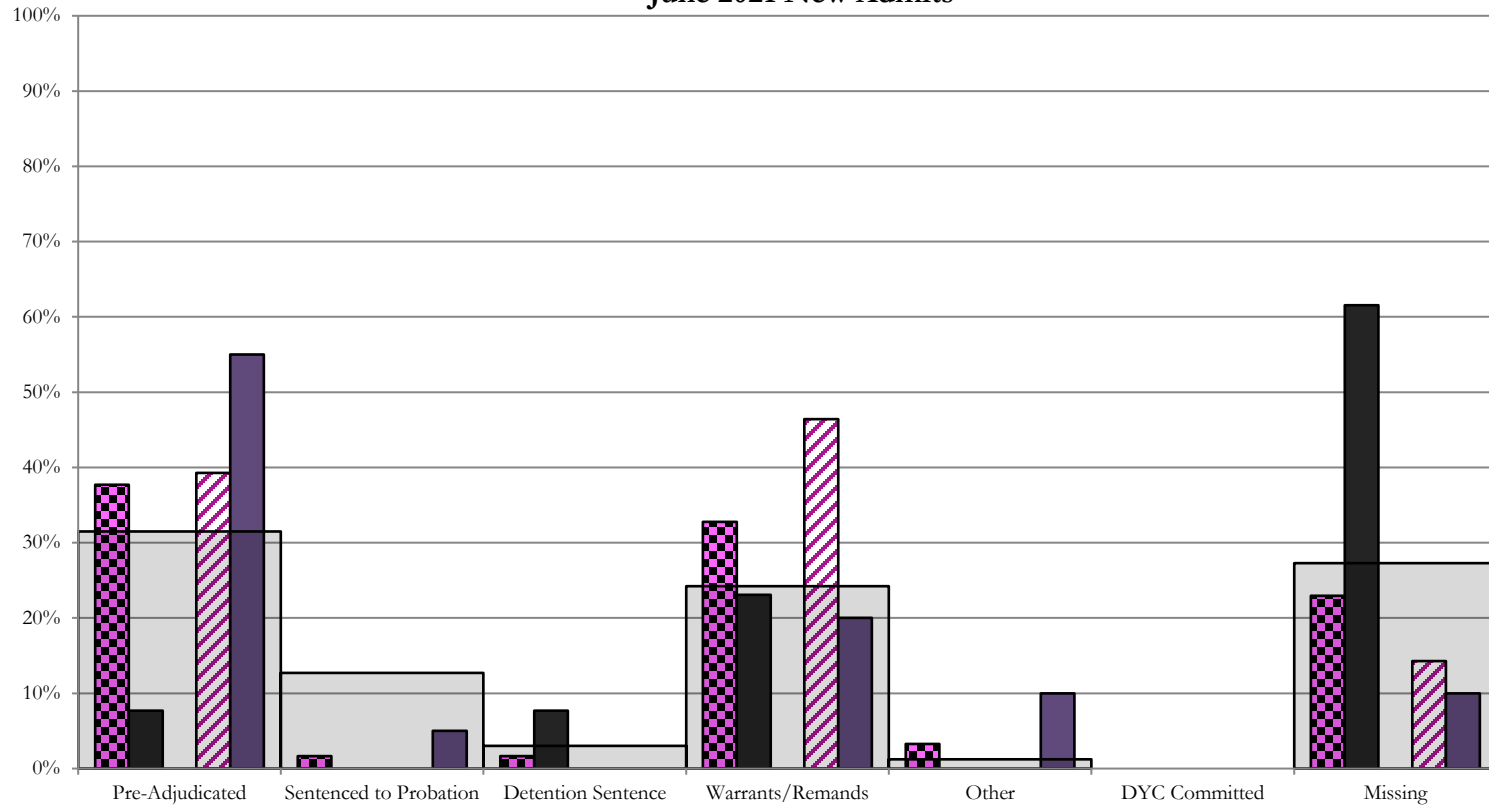
### Monthly CYDC Reason Detained (RD) by Judicial District

Region	JD	Monthly New Admits	Pre-Adjudicated				Sentenced to Probation				Detention Sentence								Warrants/Remands				Other								DYC Committed				Missing			
			Felony		Misdemeanor		Technical Violator		New Charges		Probation Sentence		Detention Sentence		Valid Court Order (VCO) Truancy		Awaiting DSS (Social Services) Placement		Failure to Appear (FTA)		Failure to Comply (FTC)		Interstate Compact on Juveniles (ICJ) Hold		Immigration Hold		No Bond Hold		Out-of-Country Warrant		Institutional		Parole		Missing			
			#	%	#	%	#	%	#	%	#	%	#	%	#	%	#	%	#	%	#	%	#	%	#	%	#	%	#	%	#	%	#	%	#	%		
<i>Central Region</i>																																						
	1st	13	1	7.7%	0	0.0%	0	0.0%	0	0.0%	1	7.7%	0	0.0%	0	0.0%	0	0.0%	0	0.0%	3	23.1%	0	0.0%	0	0.0%	0	0.0%	0	0.0%	0	0.0%	0	0.0%	0	0.0%	8	61.5%
	2nd	28	8	28.6%	3	10.7%	0	0.0%	0	0.0%	0	0.0%	0	0.0%	0	0.0%	0	0.0%	7	25.0%	6	21.4%	0	0.0%	0	0.0%	0	0.0%	0	0.0%	0	0.0%	0	0.0%	0	0.0%	4	14.3%
	5th	0	0	0.0%	0	0.0%	0	0.0%	0	0.0%	0	0.0%	0	0.0%	0	0.0%	0	0.0%	0	0.0%	0	0.0%	0	0.0%	0	0.0%	0	0.0%	0	0.0%	0	0.0%	0	0.0%	0	0.0%	0	0.0%
	18th	20	5	25.0%	6	30.0%	0	0.0%	1	5.0%	0	0.0%	0	0.0%	0	0.0%	0	0.0%	0	0.0%	4	20.0%	2	10.0%	0	0.0%	0	0.0%	0	0.0%	0	0.0%	0	0.0%	0	0.0%	2	10.0%
<b>Central Total</b>		<b>61</b>	<b>14</b>	<b>23%</b>	<b>9</b>	<b>15%</b>	<b>0</b>	<b>0.0%</b>	<b>1</b>	<b>1.6%</b>	<b>0</b>	<b>0.0%</b>	<b>1</b>	<b>1.6%</b>	<b>0</b>	<b>0.0%</b>	<b>0</b>	<b>0.0%</b>	<b>7</b>	<b>11%</b>	<b>13</b>	<b>21%</b>	<b>2</b>	<b>3.3%</b>	<b>0</b>	<b>0.0%</b>	<b>0</b>	<b>0.0%</b>	<b>0</b>	<b>0.0%</b>	<b>0</b>	<b>0.0%</b>	<b>0</b>	<b>0.0%</b>	<b>0</b>	<b>0.0%</b>	<b>14</b>	<b>23.0%</b>
<i>Northeast Region</i>																																						
	8th	5	0	0.0%	0	0.0%	0	0.0%	1	20.0%	0	0.0%	0	0.0%	0	0.0%	0	0.0%	0	0.0%	2	40.0%	0	0.0%	0	0.0%	0	0.0%	0	0.0%	0	0.0%	0	0.0%	0	0.0%	2	40.0%
	13th	8	2	25.0%	1	12.5%	0	0.0%	1	12.5%	0	0.0%	1	12.5%	0	0.0%	0	0.0%	0	0.0%	1	12.5%	0	0.0%	0	0.0%	0	0.0%	0	0.0%	0	0.0%	0	0.0%	0	0.0%	2	25.0%
	17th	20	4	20.0%	3	15.0%	0	0.0%	2	10.0%	0	0.0%	0	0.0%	0	0.0%	0	0.0%	0	0.0%	2	10.0%	0	0.0%	0	0.0%	0	0.0%	0	0.0%	0	0.0%	0	0.0%	0	0.0%	10	50.0%
	19th	9	3	33.3%	1	11.1%	1	11.1%	0	0.0%	0	0.0%	0	0.0%	0	0.0%	0	0.0%	3	33.3%	1	11.1%	0	0.0%	0	0.0%	0	0.0%	0	0.0%	0	0.0%	0	0.0%	0	0.0%	0	0.0%
	20th	9	1	11.1%	3	33.3%	0	0.0%	0	0.0%	0	0.0%	2	22.2%	0	0.0%	0	0.0%	1	11.1%	0	0.0%	0	0.0%	0	0.0%	0	0.0%	0	0.0%	0	0.0%	0	0.0%	0	0.0%	2	22.2%
<b>Northeast Total</b>		<b>51</b>	<b>10</b>	<b>20%</b>	<b>8</b>	<b>16%</b>	<b>1</b>	<b>2.0%</b>	<b>4</b>	<b>7.8%</b>	<b>0</b>	<b>0.0%</b>	<b>3</b>	<b>5.9%</b>	<b>0</b>	<b>0.0%</b>	<b>0</b>	<b>0.0%</b>	<b>4</b>	<b>7.8%</b>	<b>6</b>	<b>12%</b>	<b>0</b>	<b>0.0%</b>	<b>0</b>	<b>0.0%</b>	<b>0</b>	<b>0.0%</b>	<b>0</b>	<b>0.0%</b>	<b>0</b>	<b>0.0%</b>	<b>0</b>	<b>0.0%</b>	<b>0</b>	<b>0.0%</b>	<b>15</b>	<b>29%</b>
<i>Southern Region</i>																																						
	3rd	0	0	0.0%	0	0%	0	0.0%	0	0.0%	0	0.0%	0	0.0%	0	0.0%	0	0.0%	0	0.0%	0	0.0%	0	0.0%	0	0.0%	0	0.0%	0	0.0%	0	0.0%	0	0.0%	0	0.0%	0	0.0%
	4th	33	4	12.1%	1	3.0%	0	0.0%	14	42.4%	0	0.0%	0	0.0%	0	0.0%	0	0.0%	3	9.1%	3	9.1%	0	0.0%	0	0.0%	0	0.0%	0	0.0%	0	0.0%	0	0.0%	0	0.0%	8	24.2%
	10th	5	0	0.0%	0	0.0%	0	0.0%	1	20.0%	0	0.0%	0	0.0%	0	0.0%	0	0.0%	1	20.0%	1	20.0%	0	0.0%	0	0.0%	0	0.0%	0	0.0%	0	0.0%	0	0.0%	0	0.0%	2	40.0%
	11th	0	0	0.0%	0	0.0%	0	0.0%	0	0.0%	0	0.0%	0	0.0%	0	0.0%	0	0.0%	0	0.0%	0	0.0%	0	0.0%	0	0.0%	0	0.0%	0	0.0%	0	0.0%	0	0.0%	0	0.0%	0	0.0%
	12th	0	0	0.0%	0	0.0%	0	0.0%	0	0.0%	0	0.0%	0	0.0%	0	0.0%	0	0.0%	0	0.0%	0	0.0%	0	0.0%	0	0.0%	0	0.0%	0	0.0%	0	0.0%	0	0.0%	0	0.0%	0	0.0%
	15th	1	0	0.0%	0	0.0%	0	0.0%	0	0.0%	0	0.0%	0	0.0%	0	0.0%	0	0.0%	0	0.0%	0	0%	0	0.0%	0	0.0%	0	0.0%	0	0.0%	0	0.0%	0	0.0%	1	100.0%		
	16th	1	1	100%	0	0.0%	0	0.0%	0	0.0%	0	0.0%	0	0.0%	0	0.0%	0	0.0%	0	0.0%	0	0%	0	0.0%	0	0.0%	0	0.0%	0	0.0%	0	0.0%	0	0.0%	0	0.0%		
<b>Southern Total</b>		<b>40</b>	<b>5</b>	<b>13%</b>	<b>1</b>	<b>3%</b>	<b>0</b>	<b>0.0%</b>	<b>15</b>	<b>37.5%</b>	<b>0</b>	<b>0.0%</b>	<b>0</b>	<b>0.0%</b>	<b>0</b>	<b>0.0%</b>	<b>0</b>	<b>0.0%</b>	<b>4</b>	<b>10%</b>	<b>4</b>	<b>10%</b>	<b>0</b>	<b>0.0%</b>	<b>0</b>	<b>0.0%</b>	<b>0</b>	<b>0.0%</b>	<b>0</b>	<b>0.0%</b>	<b>0</b>	<b>0.0%</b>	<b>0</b>	<b>0.0%</b>	<b>0</b>	<b>0.0%</b>	<b>11</b>	<b>28%</b>
<i>Western Region</i>																																						
	6th	0	0	0.0%	0	0.0%	0	0.0%	0	0.0%	0	0.0%	0	0.0%	0	0.0%	0	0.0%	0	0.0%	0	0.0%	0	0.0%	0	0.0%	0	0.0%	0	0.0%	0	0.0%	0	0.0%	0	0%		
	7th	3	2	66.7%	0	0.0%	0	0.0%	0	0.0%	0	0.0%	0	0.0%	0	0.0%	0	0.0%	0	0.0%	0	0.0%	0	0.0%	0	0.0%	0	0.0%	0	0.0%	0	0.0%	0	0.0%	1	33.3%		
	9th	0	0	0.0%	0	0.0%	0	0.0%	0	0.0%	0	0.0%	0	0.0%	0	0.0%	0	0.0%	0	0.0%	0	0.0%	0	0.0%	0	0.0%	0	0.0%	0	0.0%	0	0.0%	0	0.0%	0	0.0%		
	14th	0	0	0.0%	0	0.0%	0	0.0%	0	0.0%	0	0.0%	0	0.0%	0	0.0%	0	0.0%	0	0.0%	0	0.0%	0	0.0%	0	0.0%	0	0.0%	0	0.0%	0	0.0%	0	0.0%	0	0.0%		
	21st	10	3	30.0%	0	0.0%	0	0.0%	0	0.0%	0	0.0%	1	10.0%	0	0.0%	0	0.0%	0	0.0%	2	20.0%	0	0.0%	0	0.0%	0	0.0%	0	0.0%	0	0.0%	0	0.0%	0	0.0%	4	40.0%
	22nd	0	0	0.0%	0	0.0%	0	0.0%	0	0.0%	0	0.0%	0	0.0%	0	0.0%	0	0.0%	0	0.0%	0	0.0%	0	0.0%	0	0.0%	0	0.0%	0	0.0%	0	0.0%	0	0.0%	0	0.0%		
<b>Western Total</b>		<b>13</b>	<b>5</b>	<b>38%</b>	<b>0</b>	<b>0.0%</b>	<b>0</b>	<b>0.0%</b>	<b>0</b>	<b>0.0%</b>	<b>1</b>	<b>7.7%</b>	<b>0</b>	<b>0.0%</b>	<b>0</b>	<b>0.0%</b>	<b>0</b>	<b>0.0%</b>	<b>0</b>	<b>0.0%</b>	<b>2</b>	<b>15%</b>	<b>0</b>	<b>0.0%</b>	<b>0</b>	<b>0.0%</b>	<b>0</b>	<b>0.0%</b>	<b>0</b>	<b>0.0%</b>	<b>0</b>	<b>0.0%</b>	<b>0</b>	<b>0.0%</b>	<b>5</b>	<b>38%</b>		
<b>Individual RD Totals</b>		<b>165</b>	<b>34</b>	<b>21%</b>	<b>18</b>	<b>11%</b>	<b>1</b>	<b>0.6%</b>	<b>20</b>	<b>12.1%</b>	<b>0</b>	<b>0.0%</b>	<b>5</b>	<b>3.0%</b>	<b>0</b>	<b>0.0%</b>	<b>0</b>	<b>0.0%</b>	<b>15</b>	<b>9%</b>	<b>25</b>	<b>15%</b>	<b>2</b>	<b>1.2%</b>	<b>0</b>	<b>0.0%</b>	<b>0</b>	<b>0.0%</b>	<b>0</b>	<b>0.0%</b>	<b>0</b>	<b>0.0%</b>	<b>0</b>	<b>0.0%</b>	<b>45</b>	<b>27%</b>		
<b>Statewide Totals</b>		<b>165</b>	<b>52</b>	<b>31.5%</b>	<b>21</b>	<b>12.7%</b>	<b>0</b>	<b>0.0%</b>	<b>20</b>	<b>12.1%</b>	<b>0</b>	<b>0.0%</b>	<b>5</b>	<b>3.0%</b>	<b>0</b>	<b>0.0%</b>	<b>0</b>	<b>0.0%</b>	<b>15</b>	<b>9%</b>	<b>25</b>	<b>15%</b>	<b>2</b>	<b>1.2%</b>	<b>0</b>	<b>0.0%</b>	<b>0</b>	<b>0.0%</b>	<b>0</b>	<b>0.0%</b>	<b>0</b>	<b>0.0%</b>	<b>0</b>	<b>0.0%</b>	<b>45</b>	<b>27%</b>		

# Central Region

## CYDC Reason Detained by Judicial District

### June 2021 New Admits



■ CENTRAL REGION, 61 New Admits

■ 5th JD, 0 New Admits

■ 18th JD, 20 New Admits

■ 1st JD, 13 New Admits

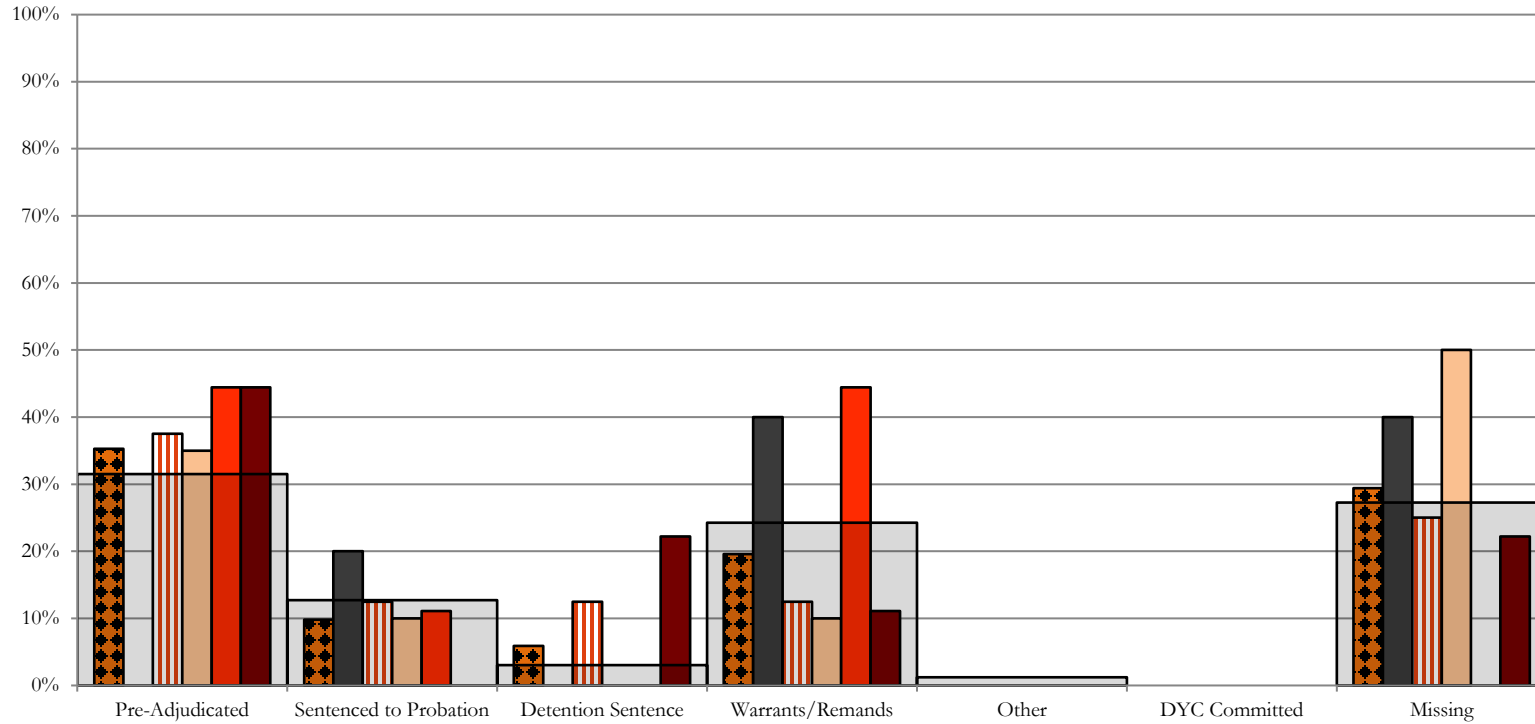
■ 2nd JD, 28 New Admits

■ STATEWIDE, 165 New Admits

# Northeast Region

## CYDC Reason Detained by Judicial District

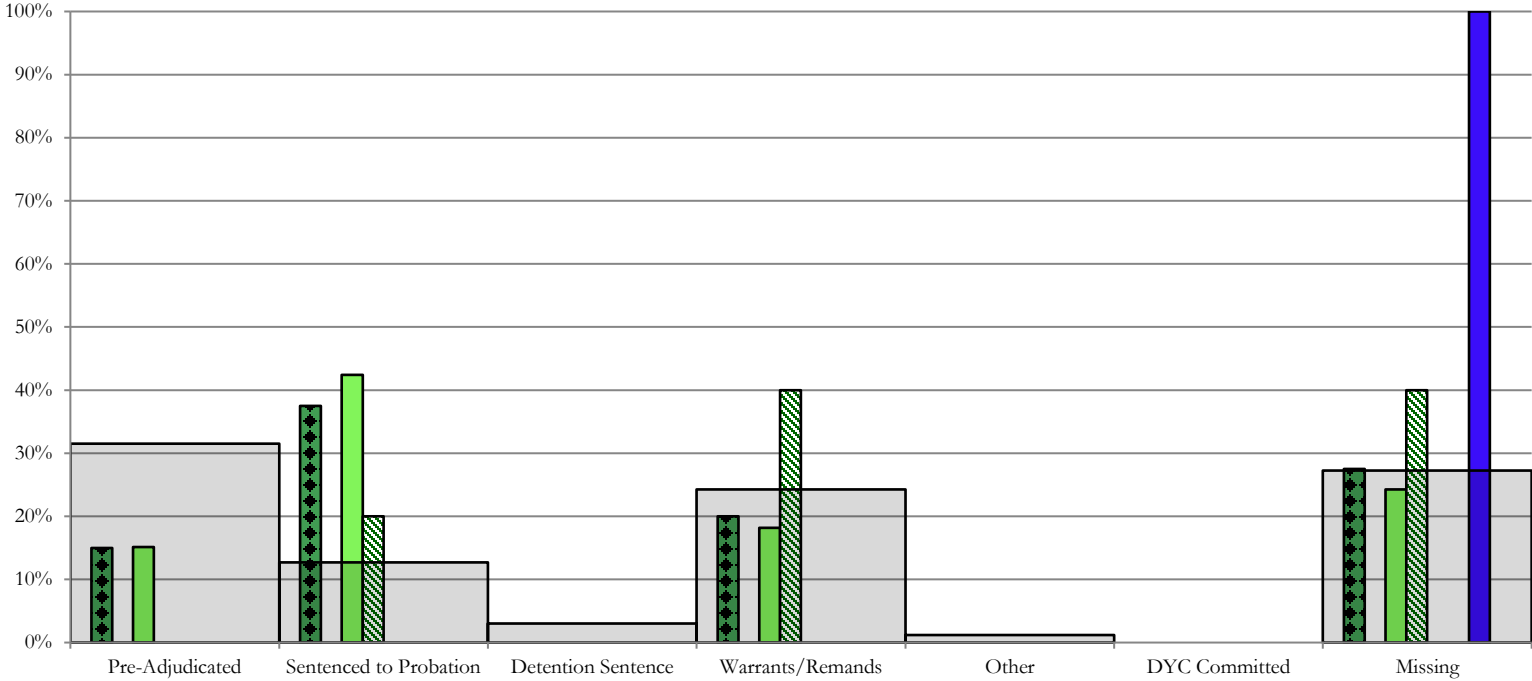
### June 2021 New Admits



- NORTHEAST REGION, 51 New Admits
- 8th JD, 5 New Admits
- 13th JD, 8 New Admits
- 17th JD, 20 New Admits
- 19th JD, 9 New Admits
- 20th JD, 9 New Admits
- STATEWIDE, 165 New Admits

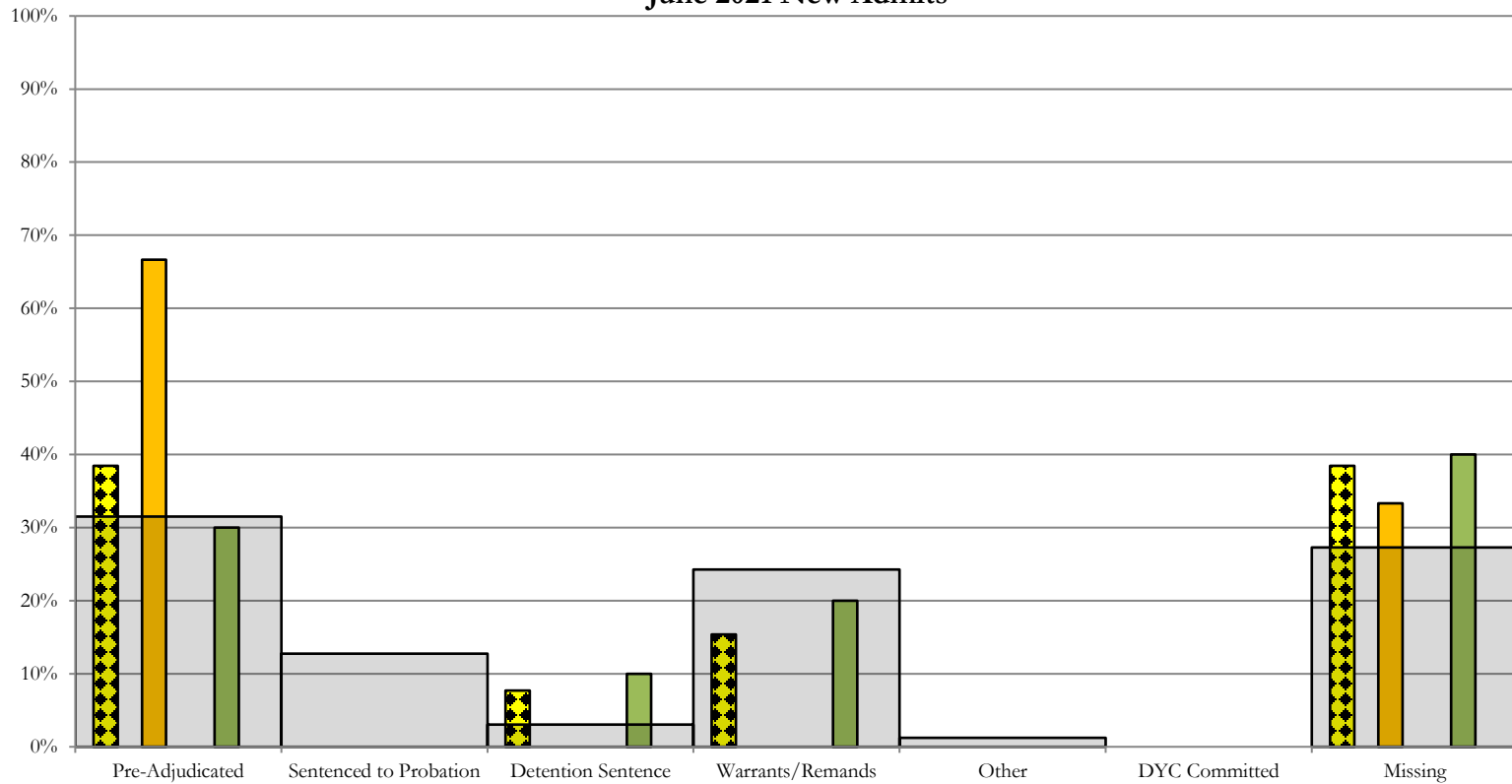


# Southern Region CYDC Reason Detained by Judicial District June 2021 New Admits



- SOUTHERN REGION, 40 New Admits
- 3rd JD, 0 New Admits
- 4th JD, 33 New Admits
- 10th JD, 5 New Admits
- 11th JD, 0 New Admits
- 12th JD, 0 New Admits
- 15th JD, 1 New Admits
- 16th JD, 1 New Admits
- STATEWIDE, 165 New Admits

## Western Region CYDC Reason Detained by Judicial District June 2021 New Admits



■ WESTERN REGION, 13 New Admits

■ 7th JD, 3 New Admits

■ 14th JD, 0 New Admits

■ 22nd JD, 0 New Admits

■ 6th JD, 0 New Admits

■ 9th JD, 0 New Admits

■ 21st JD, 10 New Admits

■ STATEWIDE, 165 New Admits

## June 2021 CYDC JDSAG Supplemental Report

### Year-to-Date CYDC Reason Detained (RD) by Judicial District

Region	JD	Year-to-Date New Admits	Pre-Adjudicated				Sentenced to Probation				Detention Sentence						Warrants/Remands				Other						DYC Committed				Missing									
			Felony		Misdemeanor		Technical Violator		New Charges		Probation Sentence		Detention Sentence		Valid Court Order (VCO) Truancy		Awaiting DSS (Social Services) Placement		Failure to Appear (FTA)		Failure to Comply (FTC)		Interstate Compact on Juveniles (ICJ) Hold		Immigration Hold		No Bond Hold		Out-of-Country Warrant		Institutional		Parole		Missing					
			#	%	#	%	#	%	#	%	#	%	#	%	#	%	#	%	#	%	#	%	#	%	#	%	#	%	#	%	#	%	#	%	#	%				
<i>Central Region</i>																																								
	1st	189	77	40.7%	20	10.6%	4	2.1%	0	0.0%	0	0.0%	9	4.8%	0	0.0%	1	0.5%	22	11.6%	34	18.0%	0	0.0%	0	0.0%	0	0.0%	0	0.0%	0	0.0%	0	0.0%	0	0.0%	22	11.6%		
	2nd	333	142	42.6%	39	11.7%	0	0.0%	0	0.0%	0	0.0%	0	0.0%	0	0.0%	0	0.0%	44	13.2%	84	25.2%	7	2.1%	0	0.0%	0	0.0%	0	0.0%	0	0.0%	0	0.0%	1	0.3%	16	4.8%		
	5th	10	3	30.0%	1	10.0%	0	0.0%	0	0.0%	0	0.0%	0	0.0%	0	0.0%	0	0.0%	2	20.0%	3	30.0%	0	0.0%	0	0.0%	0	0.0%	0	0.0%	0	0.0%	0	0.0%	0	0.0%	1	10.0%		
	18th	336	126	37.5%	66	19.6%	0	0.0%	1	0.3%	0	0.0%	7	2.1%	0	0.0%	0	0.0%	26	7.7%	89	26.5%	9	2.7%	0	0.0%	0	0.0%	0	0.0%	0	0.0%	1	0.3%	2	0.6%	9	2.7%		
<b>Central Total</b>		<b>868</b>	<b>348</b>	<b>40%</b>	<b>126</b>	<b>15%</b>	<b>4</b>	<b>0.5%</b>	<b>1</b>	<b>0.1%</b>	<b>0</b>	<b>0.0%</b>	<b>16</b>	<b>1.8%</b>	<b>0</b>	<b>0.0%</b>	<b>1</b>	<b>0.1%</b>	<b>94</b>	<b>11%</b>	<b>210</b>	<b>24%</b>	<b>16</b>	<b>1.8%</b>	<b>0</b>	<b>0.0%</b>	<b>0</b>	<b>0.0%</b>	<b>0</b>	<b>0.0%</b>	<b>0</b>	<b>0.0%</b>	<b>1</b>	<b>0.1%</b>	<b>3</b>	<b>0.3%</b>	<b>48</b>	<b>5.5%</b>		
<i>Northeast Region</i>																																								
	8th	91	27	29.7%	5	5.5%	5	5.5%	1	1.1%	0	0.0%	11	12.1%	0	0.0%	0	0.0%	7	7.7%	24	26.4%	0	0.0%	0	0.0%	0	0.0%	0	0.0%	0	0.0%	0	0.0%	0	0.0%	11	12.1%		
	13th	50	24	48.0%	7	14.0%	1	2.0%	1	2.0%	0	0.0%	1	2.0%	0	0.0%	0	0.0%	0	0.0%	13	26.0%	0	0.0%	0	0.0%	0	0.0%	0	0.0%	0	0.0%	0	0.0%	0	0.0%	3	6.0%		
	17th	202	83	41.1%	27	13.4%	1	0.5%	4	2.0%	0	0.0%	0	0.0%	0	0.0%	0	0.0%	16	7.9%	35	17.3%	0	0.0%	0	0.0%	0	0.0%	0	0.0%	0	0.0%	0	0.0%	0	0.0%	37	18.3%		
	19th	206	57	27.7%	41	19.9%	51	24.8%	1	0.5%	0	0.0%	0	0.0%	0	0.0%	0	0.0%	8	3.9%	48	23.3%	0	0.0%	0	0.0%	0	0.0%	0	0.0%	0	0.0%	0	0.0%	0	0.0%	0	0.0%	0	0.0%
	20th	70	14	20.0%	12	17.1%	4	5.7%	0	0.0%	0	0.0%	15	21.4%	0	0.0%	0	0.0%	5	7.1%	15	21.4%	1	1.4%	0	0.0%	0	0.0%	0	0.0%	0	0.0%	0	0.0%	0	0.0%	4	5.7%		
<b>Northeast Total</b>		<b>619</b>	<b>205</b>	<b>33%</b>	<b>92</b>	<b>15%</b>	<b>62</b>	<b>10.0%</b>	<b>7</b>	<b>1.1%</b>	<b>0</b>	<b>0.0%</b>	<b>27</b>	<b>4.4%</b>	<b>0</b>	<b>0.0%</b>	<b>0</b>	<b>0.0%</b>	<b>36</b>	<b>5.8%</b>	<b>135</b>	<b>22%</b>	<b>1</b>	<b>0.2%</b>	<b>0</b>	<b>0.0%</b>	<b>0</b>	<b>0.0%</b>	<b>0</b>	<b>0.0%</b>	<b>0</b>	<b>0.0%</b>	<b>0</b>	<b>0.0%</b>	<b>0</b>	<b>0.0%</b>	<b>54</b>	<b>9%</b>		
<i>Southern Region</i>																																								
	3rd	8	6	75.0%	2	25.0%	0	0.0%	0	0.0%	0	0.0%	0	0.0%	0	0.0%	0	0.0%	0	0.0%	0	0.0%	0	0.0%	0	0.0%	0	0.0%	0	0.0%	0	0.0%	0	0.0%	0	0.0%	0	0.0%		
	4th	428	181	42.3%	48	11.2%	1	0.2%	14	3.3%	0	0.0%	2	0.5%	0	0.0%	0	0.0%	38	8.9%	81	18.9%	0	0.0%	0	0.0%	0	0.0%	0	0.0%	3	0.7%	0	0.0%	0	0.0%	60	14.0%		
	10th	81	25	30.9%	8	9.9%	1	1.2%	1	1.2%	0	0.0%	2	2.5%	0	0.0%	0	0.0%	13	16.0%	24	29.6%	0	0.0%	0	0.0%	0	0.0%	0	0.0%	0	0.0%	0	0.0%	0	0.0%	7	8.6%		
	11th	21	5	23.8%	2	9.5%	0	0.0%	0	0.0%	0	0.0%	8	38.1%	0	0.0%	0	0.0%	0	0.0%	2	9.5%	0	0.0%	0	0.0%	0	0.0%	0	0.0%	0	0.0%	0	0.0%	0	0.0%	4	19.0%		
	12th	7	4	57.1%	0	0.0%	0	0.0%	0	0.0%	0	0.0%	0	0.0%	0	0.0%	0	0.0%	3	42.9%	0	0.0%	0	0.0%	0	0.0%	0	0.0%	0	0.0%	0	0.0%	0	0.0%	0	0.0%	0	0.0%		
	15th	14	6	42.9%	2	14.3%	0	0.0%	0	0.0%	0	0.0%	0	0.0%	0	0.0%	0	0.0%	1	7.1%	1	7%	0	0.0%	0	0.0%	0	0.0%	0	0.0%	0	0.0%	0	0.0%	4	28.6%				
	16th	6	2	33.3%	0	0.0%	0	0.0%	0	0.0%	0	0.0%	1	16.7%	0	0.0%	0	0.0%	0	0.0%	2	33%	0	0.0%	0	0.0%	0	0.0%	0	0.0%	0	0.0%	0	0.0%	0	0.0%	1	16.7%		
<b>Southern Total</b>		<b>565</b>	<b>229</b>	<b>41%</b>	<b>62</b>	<b>11%</b>	<b>2</b>	<b>0.4%</b>	<b>15</b>	<b>2.7%</b>	<b>0</b>	<b>0.0%</b>	<b>13</b>	<b>2.3%</b>	<b>0</b>	<b>0.0%</b>	<b>0</b>	<b>0.0%</b>	<b>55</b>	<b>10%</b>	<b>110</b>	<b>19%</b>	<b>0</b>	<b>0.0%</b>	<b>0</b>	<b>0.0%</b>	<b>0</b>	<b>0.0%</b>	<b>0</b>	<b>0.0%</b>	<b>0</b>	<b>0.0%</b>	<b>3</b>	<b>0.5%</b>	<b>0</b>	<b>0.0%</b>	<b>76</b>	<b>13%</b>		
<i>Western Region</i>																																								
	6th	12	3	25.0%	1	8.3%	0	0.0%	0	0.0%	0	0.0%	0	0.0%	0	0.0%	0	0.0%	1	8.3%	2	16.7%	0	0.0%	0	0.0%	0	0.0%	0	0.0%	0	0.0%	0	0.0%	0	0.0%	5	41.7%		
	7th	30	15	50.0%	1	3.3%	1	3.3%	1	3.3%	0	0.0%	0	0.0%	0	0.0%	0	0.0%	3	10.0%	4	13.3%	0	0.0%	0	0.0%	0	0.0%	0	0.0%	1	3.3%	0	0.0%	0	0.0%	4	13.3%		
	9th	14	3	21.4%	0	0.0%	2	14.3%	0	0.0%	0	0.0%	0	0.0%	0	0.0%	0	0.0%	2	14.3%	6	42.9%	0	0.0%	0	0.0%	0	0.0%	0	0.0%	0	0.0%	0	0.0%	0	0.0%	1	7.1%		
	14th	3	0	0.0%	1	33.3%	0	0.0%	0	0.0%	0	0.0%	0	0.0%	0	0.0%	0	0.0%	0	0.0%	0	0.0%	0	0.0%	0	0.0%	0	0.0%	0	0.0%	0	0.0%	0	0.0%	0	0.0%	2	66.7%		
	21st	175	42	24.0%	14	8.0%	0	0.0%	0	0.0%	0	0.0%	5	2.9%	0	0.0%	0	0.0%	14	8.0%	83	47.4%	0	0.0%	0	0.0%	0	0.0%	0	0.0%	0	0.0%	0	0.0%	0	0.0%	17	9.7%		
	22nd	9	5	55.6%	2	22.2%	0	0.0%	0	0.0%	0	0.0%	0	0.0%	0	0.0%	0	0.0%	0	0.0%	1	11.1%	0	0.0%	0	0.0%	0	0.0%	0	0.0%	0	0.0%	0	0.0%	0	0.0%	1	11.1%		
<b>Western Total</b>		<b>243</b>	<b>68</b>	<b>28%</b>	<b>19</b>	<b>7.8%</b>	<b>3</b>	<b>1.2%</b>	<b>1</b>	<b>0.4%</b>	<b>0</b>	<b>0.0%</b>	<b>5</b>	<b>2.1%</b>	<b>0</b>	<b>0.0%</b>	<b>0</b>	<b>0.0%</b>	<b>20</b>	<b>8.2%</b>	<b>96</b>	<b>40%</b>	<b>0</b>	<b>0.0%</b>	<b>0</b>	<b>0.0%</b>	<b>0</b>	<b>0.0%</b>	<b>0</b>	<b>0.0%</b>	<b>0</b>	<b>0.0%</b>	<b>1</b>	<b>0.4%</b>	<b>0</b>	<b>0.0%</b>	<b>30</b>	<b>12%</b>		
<b>Individual RD Totals</b>		<b>2,295</b>	<b>850</b>	<b>37%</b>	<b>299</b>	<b>13%</b>	<b>71</b>	<b>3.1%</b>	<b>24</b>	<b>1.0%</b>	<b>0</b>	<b>0.0%</b>	<b>61</b>	<b>2.7%</b>	<b>0</b>	<b>0.0%</b>	<b>1</b>	<b>0.0%</b>	<b>205</b>	<b>9%</b>	<b>551</b>	<b>24%</b>	<b>17</b>	<b>0.7%</b>	<b>0</b>	<b>0.0%</b>	<b>0</b>	<b>0.0%</b>	<b>0</b>	<b>0.0%</b>	<b>0</b>	<b>0.0%</b>	<b>5</b>	<b>0.2%</b>	<b>3</b>	<b>0.1%</b>	<b>208</b>	<b>9%</b>		
<b>Statewide Totals</b>		<b>2,295</b>	<b>1,149</b>	<b>50.1%</b>	<b>95</b>	<b>4.1%</b>			<b>62</b>				<b>2.7%</b>					<b>756</b>	<b>32.9%</b>			<b>17</b>			<b>0.7%</b>			<b>8</b>		<b>0.3%</b>			<b>208</b>	<b>9%</b>						

# June 2021 CYDC Supplemental Report

## DYC Detention Maximum Youth Served by Judicial District<sup>1</sup>

Region	JD	Detention Capacity	Detention ADP		Maximum Youth Served on a Single Day <sup>2,3</sup>			
			June 2021	YTD	June 2021		YTD	
					Number of Youth	% of Detention Capacity	Number of Youth	% of Detention Capacity
<i>Central Region</i>								
	1st	34	10.5	12.5	15	44.1%	18	52.9%
	2nd	53	26.1	28.8	32	60.4%	36	67.9%
	5th	2	0.1	0.4	1	50.0%	2	100.0%
	18th	56	19.5	23.4	23	41.1%	42	75.0%
<b>Central Region</b>		<b>145</b>	<b>56.1</b>	<b>65.0</b>	<b>65</b>	<b>44.8%</b>	<b>84</b>	<b>57.9%</b>
<i>Northeast Region</i>								
	8th	17	4.4	5.4	5	29.4%	10	58.8%
	13th	4	2.9	1.8	4	100.0%	6	150.0%
	17th	26	12.8	13.3	16	61.5%	19	73.1%
	19th	23	5.4	8.2	9	39.1%	15	65.2%
	20th	16	3.0	2.2	5	31.3%	6	37.5%
<b>Northeast Region</b>		<b>86</b>	<b>28.6</b>	<b>31.0</b>	<b>33</b>	<b>38.4%</b>	<b>42</b>	<b>48.8%</b>
<i>Southern Region</i>								
	3rd	2	1.3	1.7	2	100.0%	4	200.0%
	4th	41	30.4	30.3	34	82.9%	38	92.7%
	10th	15	4.6	4.5	6	40.0%	10	66.7%
	11th	4	2.0	0.8	2	50.0%	3	75.0%
	12th	2	0.4	0.7	1	50.0%	3	150.0%
	15th	2	1.3	0.8	2	100.0%	4	200.0%
	16th	2	0.7	0.5	1	50.0%	2	100.0%
<b>Southern Region</b>		<b>68</b>	<b>40.6</b>	<b>39.2</b>	<b>39</b>	<b>57.4%</b>	<b>48</b>	<b>70.6%</b>
<i>Western Region</i>								
	6th	2	0.0	1.0	0	0.0%	3	150.0%
	7th	5	3.7	2.0	5	100.0%	5	100.0%
	9th	4	0.1	0.5	1	25.0%	3	75.0%
	14th	2	1.0	0.3	1	50.0%	1	50.0%
	21st	13	6.6	6.0	9	69.2%	11	84.6%
	22nd	2	0.0	0.2	0	0.0%	2	100.0%
<b>Western Region</b>		<b>28</b>	<b>11.3</b>	<b>9.9</b>	<b>15</b>	<b>53.6%</b>	<b>16</b>	<b>57.1%</b>
<i>Missing JD or Multiple JDs</i>			0.5	1.2				
<b>Statewide</b>		<b>327</b>	<b>137.1</b>	<b>146.2</b>	<b>148</b>	<b>45.3%</b>	<b>178</b>	<b>54.4%</b>

<sup>1</sup> Maximum youth served is the highest number of youth in detention on a single day during the month or fiscal year.

<sup>2</sup> Regional figures are not the sum of judicial districts, but represent the maximum count on one day for the entire region.

<sup>3</sup> State figures are not the sum of regional figures, but represent the maximum count on one day for the entire state.

## June 2021 CYDC Supplemental Report

### CYDC Community ADP by Judicial District

Region	JD	Committed		ICJ		Municipal		Pre-Adjudicated		Sentenced		VCO		Total	
		June	YTD	June	YTD	June	YTD	June	YTD	June	YTD	June	YTD	June	YTD
<i>Central Region</i>															
	1st	0.0	0.5	0.0	0.0	17.0	11.3	102.6	89.7	7.6	6.6	0.0	0.0	127.3	108.2
	2nd	4.0	1.6	0.0	0.1	0.0	0.0	110.8	99.9	37.4	35.9	0.0	0.0	152.3	137.5
	5th	0.0	0.0	0.0	0.0	0.0	0.0	16.0	9.8	54.6	49.0	0.0	0.0	70.6	58.8
	18th	0.0	0.0	0.5	0.2	1.0	1.0	224.6	242.4	36.5	32.2	0.0	0.0	262.5	275.8
<b>Central Total</b>		<b>4.0</b>	<b>2.1</b>	<b>0.5</b>	<b>0.3</b>	<b>18.0</b>	<b>12.3</b>	<b>454.1</b>	<b>441.9</b>	<b>136.1</b>	<b>123.7</b>	<b>0.0</b>	<b>0.0</b>	<b>612.7</b>	<b>580.3</b>
<i>Northeast Region</i>															
	8th	0.0	0.0	0.0	0.0	0.0	0.0	65.1	56.5	24.5	24.8	0.0	0.0	89.6	81.3
	13th	0.0	0.0	0.0	0.0	0.4	20.5	16.8	11.9	2.7	1.8	1.8	1.8	21.6	35.9
	17th	0.0	0.0	0.0	0.0	0.0	0.0	195.1	145.4	22.3	15.4	0.0	0.0	217.3	160.8
	19th	0.0	1.7	0.0	0.0	1.0	0.6	34.4	48.2	18.4	19.1	6.0	1.7	59.8	71.2
	20th	0.0	0.0	0.0	0.0	1.0	1.2	74.6	57.7	13.2	8.1	0.0	0.0	88.8	67.0
<b>Northeast Total</b>		<b>0.0</b>	<b>1.7</b>	<b>0.0</b>	<b>0.0</b>	<b>2.4</b>	<b>22.2</b>	<b>385.9</b>	<b>319.6</b>	<b>81.1</b>	<b>69.2</b>	<b>7.8</b>	<b>3.5</b>	<b>477.1</b>	<b>416.3</b>
<i>Southern Region</i>															
	3rd	0.0	0.0	0.0	0.0	0.0	0.0	7.3	6.8	1.7	1.7	2.0	0.6	10.9	9.1
	4th	2.0	1.1	0.0	0.0	31.3	29.1	200.1	169.4	42.4	37.0	0.0	0.0	275.7	236.6
	10th	1.0	0.5	0.0	0.0	2.0	0.6	25.7	19.5	9.3	5.8	1.0	0.2	39.0	26.6
	11th	0.0	0.0	0.0	0.0	16.0	13.3	23.3	19.4	7.0	4.7	0.0	0.0	46.3	37.4
	12th	0.0	0.0	0.0	0.0	2.0	2.8	15.4	9.6	0.0	0.6	0.0	0.0	17.4	12.9
	15th	0.0	0.0	0.0	0.0	0.0	0.0	9.0	7.3	10.7	11.0	0.0	0.0	19.7	18.4
	16th	0.0	0.0	0.0	0.0	0.0	0.0	6.7	6.6	1.0	1.0	47.0	38.6	54.7	46.2
<b>Southern Total</b>		<b>3.0</b>	<b>1.6</b>	<b>0.0</b>	<b>0.0</b>	<b>51.3</b>	<b>45.7</b>	<b>287.5</b>	<b>238.7</b>	<b>72.0</b>	<b>61.8</b>	<b>50.0</b>	<b>39.3</b>	<b>463.7</b>	<b>387.2</b>
<i>Western Region</i>															
	6th	0.0	0.0	0.0	0.0	4.7	0.4	4.3	4.4	0.0	0.4	0.0	0.0	9.0	5.3
	7th	0.0	0.3	0.0	0.0	0.0	0.4	12.7	9.4	4.0	4.5	0.0	0.0	16.7	14.6
	9th	0.0	0.0	0.0	0.0	1.0	7.4	8.0	7.9	1.9	1.6	0.0	0.0	10.8	16.9
	14th	0.0	0.0	0.0	0.0	0.0	0.3	4.0	1.3	0.0	0.5	0.0	0.0	4.0	2.1
	21st	0.0	0.9	0.0	0.0	1.0	0.7	50.3	40.9	36.7	32.1	0.0	0.0	88.1	74.6
	22nd	0.0	0.0	0.0	0.0	0.0	0.0	8.0	8.3	9.0	7.6	0.0	0.0	17.0	15.9
<b>Western Total</b>		<b>0.0</b>	<b>1.2</b>	<b>0.0</b>	<b>0.0</b>	<b>6.7</b>	<b>9.2</b>	<b>87.3</b>	<b>72.2</b>	<b>51.6</b>	<b>46.7</b>	<b>0.0</b>	<b>0.0</b>	<b>145.6</b>	<b>129.3</b>
<b>Statewide Total</b>		<b>7.0</b>	<b>6.6</b>	<b>0.5</b>	<b>0.3</b>	<b>78.3</b>	<b>89.4</b>	<b>1214.8</b>	<b>1072.5</b>	<b>340.8</b>	<b>301.5</b>	<b>57.8</b>	<b>42.8</b>	<b>1699.2</b>	<b>1513.1</b>