

May 2021*

FY 2020-2021

CYDC JDSAG SUPPLEMENTAL REPORT

Prepared by the Division of Youth Services (DYS)
Data Management & Analysis
June 28, 2021

* Following the initial announcement of positive cases of COVID-19 in Colorado on March 5th, data presented in this report largely reflect COVID-19 response and Executive Order (EO) compliance across the detained, committed, and paroled populations. The statewide detention bed availability was temporarily reduced to 200 effective April 21, 2020 COB; DYS plans to return to official allocations (327) and bed borrowing practices upon expiration of the EO. Due to the temporary nature of the reduction, DYS continues to utilize official detention bed allocations within this report. Commitment population reductions and Parole population increases are a direct result of the Division's EO response, releasing an unprecedented number of youth from residential placement to parole.



COLORADO

Division of Youth Services

Office of Children, Youth & Families

May 2021 CYDC Supplemental Report

DYS Commitment ADP & New Commitments by Judicial District

Region	JD ¹	2021 Population Estimates ²	ADP ³		New Commitments		
			May 2021	YTD	May 2021	YTD	YTD Rate ⁴
<i>Central</i>							
	1st	54,247	24.1	32.2	0	8	1.5
	2nd	57,556	56.7	57.0	4	29	5.0
	5th	9,148	3.0	3.0	0	1	1.1
	18th	114,514	61.4	61.1	2	30	2.6
Central Total		235,465	145.2	153.4	6	68	2.9
<i>Northeast</i>							
	8th	35,120	14.6	16.0	0	13	3.7
	13th	8,520	2.6	2.7	0	2	2.3
	17th	69,653	30.7	31.6	0	12	1.7
	19th	39,126	36.0	30.5	0	31	7.9
	20th	30,663	8.0	6.2	0	3	1.0
Northeast Total		183,082	91.9	87.0	0	61	3.3
<i>Southern</i>							
	3rd	1,875	2.3	2.9	0	0	0.0
	4th	84,107	44.3	52.7	3	18	2.1
	10th	17,817	9.2	8.7	1	7	3.9
	11th	7,367	1.9	3.3	0	1	1.4
	12th	5,455	1.0	1.0	0	0	0.0
	15th	2,111	4.0	3.4	0	1	4.7
	16th	2,836	2.0	1.5	0	1	3.5
Southern Total		121,568	64.7	73.4	4	28	2.3
<i>Western</i>							
	6th	7,430	2.7	1.9	1	3	4.0
	7th	10,673	3.0	2.5	0	3	2.8
	9th	8,519	2.7	2.1	0	1	1.2
	14th	5,788	0.0	0.0	0	0	0.0
	21st	16,466	12.5	19.2	0	9	5.5
	22nd	3,034	4.0	4.1	0	0	0.0
Western Total		51,910	24.8	29.9	1	16	3.1
Statewide Total		592,025	326.5	343.7	11	173	2.9

¹ JD represents the judicial district in which the client was committed. Regional totals are a sum of their respective judicial districts. Regional totals reported here may differ slightly from those reported in the Monthly Population Report, where region is defined by active caseloads.

² Source: DOLA 2021 Estimates.

³ Due to rounding, totals shown may not be an exact sum of the subtotals.

⁴ Per 10,000 youth in the population.

May 2021 CYDC Supplemental Report

DYC Detention ADP and New Detention Admissions by Judicial District

Region	JD	2021 Population Estimates ¹	ADP		New Admits		
			May 2021	YTD	May 2021	YTD	YTD New Admit Rate ²
<i>Central Region</i>							
	1st	54,247	13.5	12.7	16	177	32.6
	2nd	57,556	25.0	29.0	25	305	53.0
	5th	9,148	1.1	0.5	1	10	10.9
	18th	114,514	21.0	23.7	25	316	27.6
Central Total		235,465	60.6	65.9	67	808	34.3
<i>Northeast Region</i>							
	8th	35,120	3.3	5.6	5	86	24.5
	13th	8,520	2.2	1.7	6	42	49.3
	17th	69,653	12.0	13.3	34	182	26.1
	19th	39,126	6.8	8.5	19	196	50.1
	20th	30,663	2.7	2.1	4	61	19.9
Northeast Total		183,082	27.1	31.3	68	567	31.0
<i>Southern Region</i>							
	3rd	1,875	1.2	1.8	1	8	42.7
	4th	84,107	30.5	30.3	40	395	47.0
	10th	17,817	6.7	4.5	18	77	43.2
	11th	7,367	0.3	0.7	4	21	28.5
	12th	5,455	1.7	0.7	2	7	12.8
	15th	2,111	1.4	0.7	1	13	61.6
	16th	2,836	0.0	0.5	0	5	17.6
Southern Total		121,568	41.9	39.2	66	526	43.3
<i>Western Region</i>							
	6th	7,430	0.3	1.1	0	12	16.2
	7th	10,673	2.8	1.8	4	27	25.3
	9th	8,519	0.2	0.5	2	14	16.4
	14th	5,788	0.9	0.3	1	3	5.2
	21st	16,466	5.8	5.9	19	166	100.8
	22nd	3,034	0.1	0.2	1	9	29.7
Western Total		51,910	10.1	9.8	27	231	44.5
<i>Missing JD or Multiple JDs</i>			2.3	0.8			
Statewide Total		592,025	142.0	146.9	228	2,132	36.0

¹ Source: DOLA 2021 Estimates

² Per 10,000 youth in the population

May 2021 CYDC Supplemental Report

DYS Detention LOS by Judicial District				
Region	JD	YTD Detention Releases	YTD LOS (days)	LOS (days) Compared to State AVG
<i>Central</i>				
	1st	171	20.2	-2.5
	2nd	308	26.2	3.6
	5th	9	23.5	0.8
	18th	323	30.2	7.5
Central Total		811	26.5	3.8
<i>Northeast</i>				
	8th	86	19.8	-2.9
	13th	43	13.7	-8.9
	17th	183	25.2	2.6
	19th	193	13.6	-9.1
	20th	61	11.3	-11.3
Northeast Total		566	18.1	-4.6
<i>Southern</i>				
	3rd	7	23.5	0.8
	4th	395	20.4	-2.3
	10th	71	16.2	-6.5
	11th	20	9.4	-13.3
	12th	7	51.5	28.8
	15th	12	12.6	-10.0
	16th	5	33.7	11.0
Southern Total		517	19.8	-2.9
<i>Western</i>				
	6th	10	28.5	5.8
	7th	23	14.9	-7.7
	9th	13	11.6	-11.1
	14th	2	43.1	20.5
	21st	155	8.6	-14.1
	22nd	10	3.8	-18.8
Western Total		213	10.5	-12.2
Statewide Total		2,117	22.7	-

May 2021 CDYC Supplemental Report

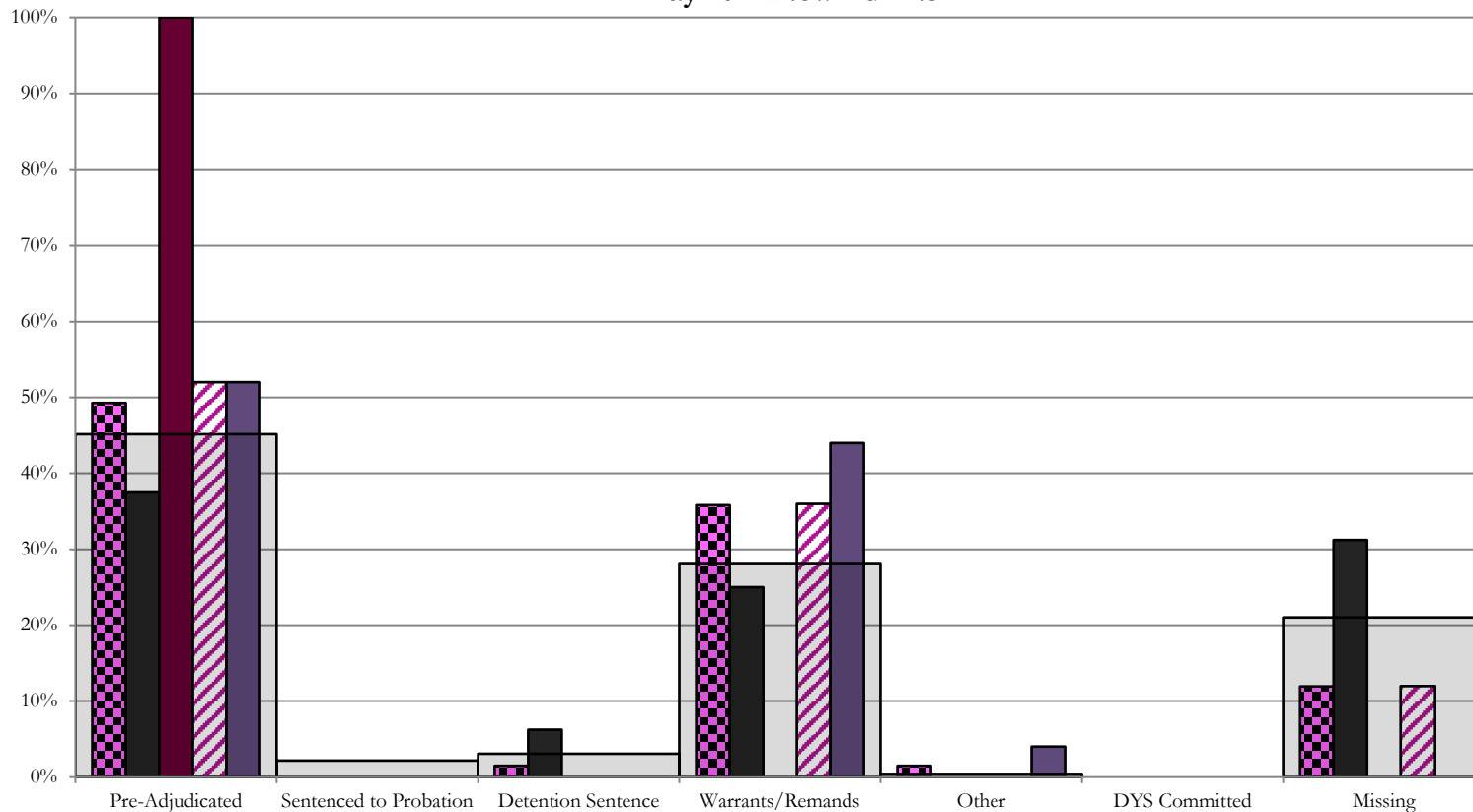
CYDC Reason Detained (RD) by Judicial District

Region	JD	Monthly New Admits	Pre-Adjudicated				Sentenced to Probation				Detention Sentence				Warrants/Remands				Other						DYS Committed		Missing									
			Felony		Misdemeanor		Technical Violator		New Charges		Probation Sentence		Detention Sentence		Valid Court Order (VCO) Truancy		Awaiting DSS (Social Services) Placement		Failure to Appear (FTA)		Failure to Comply (FIC)		Interstate Compact on Juveniles (ICJ) Hold		Immigration Hold		No Bond Hold		Out-of-Country Warrant		Institutional		Parole		Missing	
			#	%	#	%	#	%	#	%	#	%	#	%	#	%	#	%	#	%	#	%	#	%	#	%	#	%	#	%	#	%	#	%		
Central																																				
	1st	16	5	31.3%	1	6.3%	0	0.0%	0	0.0%	0	0.0%	1	6.3%	0	0.0%	0	0.0%	2	12.5%	2	12.5%	0	0.0%	0	0.0%	0	0.0%	0	0.0%	0	0.0%	0	0.0%	5	31.3%
	2nd	25	12	48.0%	1	4.0%	0	0.0%	0	0.0%	0	0.0%	0	0.0%	0	0.0%	0	0.0%	6	24.0%	3	12.0%	0	0.0%	0	0.0%	0	0.0%	0	0.0%	0	0.0%	0	0.0%	3	12.0%
	5th	1	0	0.0%	1	100.0%	0	0.0%	0	0.0%	0	0.0%	0	0.0%	0	0.0%	0	0.0%	0	0.0%	0	0.0%	0	0.0%	0	0.0%	0	0.0%	0	0.0%	0	0.0%	0	0.0%	0	0.0%
	18th	25	8	32.0%	5	20.0%	0	0.0%	0	0.0%	0	0.0%	0	0.0%	0	0.0%	0	0.0%	3	12.0%	8	32.0%	1	4.0%	0	0.0%	0	0.0%	0	0.0%	0	0.0%	0	0.0%	0	0.0%
Central Total		67	25	37%	8	12%	0	0.0%	0	0.0%	0	0.0%	1	1.5%	0	0.0%	0	0.0%	11	16%	13	19%	1	1.5%	0	0.0%	0	0.0%	0	0.0%	0	0.0%	0	0.0%	8	11.9%
Northeast																																				
	8th	5	2	40.0%	0	0.0%	0	0.0%	0	0.0%	0	0.0%	2	40.0%	0	0.0%	0	0.0%	0	0.0%	1	20.0%	0	0.0%	0	0.0%	0	0.0%	0	0.0%	0	0.0%	0	0.0%	0	0.0%
	13th	6	3	50.0%	1	16.7%	1	16.7%	0	0.0%	0	0.0%	0	0.0%	0	0.0%	0	0.0%	0	0.0%	1	16.7%	0	0.0%	0	0.0%	0	0.0%	0	0.0%	0	0.0%	0	0.0%	0	0.0%
	17th	34	9	26.5%	1	2.9%	0	0.0%	0	0.0%	0	0.0%	0	0.0%	0	0.0%	0	0.0%	3	8.8%	3	8.8%	0	0.0%	0	0.0%	0	0.0%	0	0.0%	0	0.0%	0	0.0%	18	52.9%
	19th	19	2	10.5%	7	36.8%	3	15.8%	0	0.0%	0	0.0%	0	0.0%	0	0.0%	0	0.0%	0	0.0%	7	36.8%	0	0.0%	0	0.0%	0	0.0%	0	0.0%	0	0.0%	0	0.0%	0	0.0%
	20th	4	2	50.0%	0	0.0%	0	0.0%	0	0.0%	0	0.0%	1	25.0%	0	0.0%	0	0.0%	0	0.0%	1	25.0%	0	0.0%	0	0.0%	0	0.0%	0	0.0%	0	0.0%	0	0.0%	0	0.0%
Northeast Total		68	18	26%	9	13%	4	5.9%	0	0.0%	0	0.0%	3	4.4%	0	0.0%	0	0.0%	3	4.4%	13	19%	0	0.0%	0	0.0%	0	0.0%	0	0.0%	0	0.0%	0	0.0%	18	26%
Southern																																				
	3rd	1	1	100.0%	0	0.0%	0	0.0%	0	0.0%	0	0.0%	0	0.0%	0	0.0%	0	0.0%	0	0.0%	0	0.0%	0	0.0%	0	0.0%	0	0.0%	0	0.0%	0	0.0%	0	0.0%	0	0.0%
	4th	40	23	57.5%	3	7.5%	0	0.0%	0	0.0%	0	0.0%	0	0.0%	0	0.0%	0	0.0%	4	10.0%	5	12.5%	0	0.0%	0	0.0%	0	0.0%	0	0.0%	0	0.0%	0	0.0%	5	12.5%
	10th	18	5	27.8%	3	16.7%	0	0.0%	0	0.0%	0	0.0%	0	0.0%	0	0.0%	0	0.0%	3	16.7%	3	16.7%	0	0.0%	0	0.0%	0	0.0%	0	0.0%	0	0.0%	0	0.0%	4	22.2%
	11th	4	0	0.0%	0	0.0%	0	0.0%	0	0.0%	0	0.0%	3	75.0%	0	0.0%	0	0.0%	0	0.0%	0	0.0%	0	0.0%	0	0.0%	0	0.0%	0	0.0%	0	0.0%	0	0.0%	1	25.0%
	12th	2	0	0.0%	0	0.0%	0	0.0%	0	0.0%	0	0.0%	0	0.0%	0	0.0%	0	0.0%	0	0.0%	0	0.0%	0	0.0%	0	0.0%	0	0.0%	0	0.0%	0	0.0%	0	0.0%	2	100.0%
	15th	1	0	0.0%	0	0.0%	0	0.0%	0	0.0%	0	0.0%	0	0.0%	0	0.0%	0	0.0%	1	100.0%	0	0.0%	0	0.0%	0	0.0%	0	0.0%	0	0.0%	0	0.0%	0	0.0%	0	0.0%
	16th	0	0	0.0%	0	0.0%	0	0.0%	0	0.0%	0	0.0%	0	0.0%	0	0.0%	0	0.0%	0	0.0%	0	0.0%	0	0.0%	0	0.0%	0	0.0%	0	0.0%	0	0.0%	0	0.0%	0	0.0%
Southern Total		66	29	44%	6	9%	0	0.0%	0	0.0%	0	0.0%	3	4.5%	0	0.0%	0	0.0%	8	12%	8	12%	0	0.0%	0	0.0%	0	0.0%	0	0.0%	0	0.0%	0	0.0%	12	18%
Western																																				
	6th	0	0	0.0%	0	0.0%	0	0.0%	0	0.0%	0	0.0%	0	0.0%	0	0.0%	0	0.0%	0	0.0%	0	0.0%	0	0.0%	0	0.0%	0	0.0%	0	0.0%	0	0.0%	0	0.0%	0	0%
	7th	4	2	50.0%	0	0.0%	0	0.0%	0	0.0%	0	0.0%	0	0.0%	0	0.0%	0	0.0%	0	0.0%	0	0.0%	0	0.0%	0	0.0%	0	0.0%	0	0.0%	0	0.0%	0	0.0%	2	50%
	9th	2	0	0.0%	0	0.0%	1	50.0%	0	0.0%	0	0.0%	0	0.0%	0	0.0%	0	0.0%	1	50.0%	0	0.0%	0	0.0%	0	0.0%	0	0.0%	0	0.0%	0	0.0%	0	0.0%	0	0%
	14th	1	0	0.0%	0	0.0%	0	0.0%	0	0.0%	0	0.0%	0	0.0%	0	0.0%	0	0.0%	0	0.0%	0	0.0%	0	0.0%	0	0.0%	0	0.0%	0	0.0%	0	0.0%	0	0.0%	1	100%
	21st	19	5	26.3%	1	5.3%	0	0.0%	0	0.0%	0	0.0%	0	0.0%	0	0.0%	0	0.0%	0	0.0%	7	36.8%	0	0.0%	0	0.0%	0	0.0%	0	0.0%	0	0.0%	0	0.0%	6	32%
	22nd	1	0	0.0%	0	0.0%	0	0.0%	0	0.0%	0	0.0%	0	0.0%	0	0.0%	0	0.0%	0	0.0%	0	0.0%	0	0.0%	0	0.0%	0	0.0%	0	0.0%	0	0.0%	0	0.0%	1	100%
Western Total		27	7	26%	1	3.7%	1	3.7%	0	0.0%	0	0.0%	0	0.0%	0	0.0%	0	0.0%	1	3.7%	7	26%	0	0.0%	0	0.0%	0	0.0%	0	0.0%	0	0.0%	0	0.0%	10	37%
Individual RD Totals		228	79	35%	24	11%	5	2.2%	0	0.0%	0	0.0%	7	3.1%	0	0.0%	0	0.0%	23	10%	41	18%	1	0.4%	0	0.0%	0	0.0%	0	0.0%	0	0.0%	0	0.0%	48	21%
Statewide Totals		228	103	45.2%	5	2.2%	7	3.1%	0	0.0%	0	0.0%	7	3.1%	0	0.0%	0	0.0%	64	28.1%	7	3.1%	1	0.4%	0	0.0%	0	0.0%	0	0.0%	0	0.0%	0	0.0%	48	21%

Central Region

CYDC Reason Detained by Judicial District

May 2021 New Admits



■ CENTRAL REGION, 67 New Admits

■ 5th JD, 1 New Admits

■ 18th JD, 25 New Admits

■ 1st JD, 16 New Admits

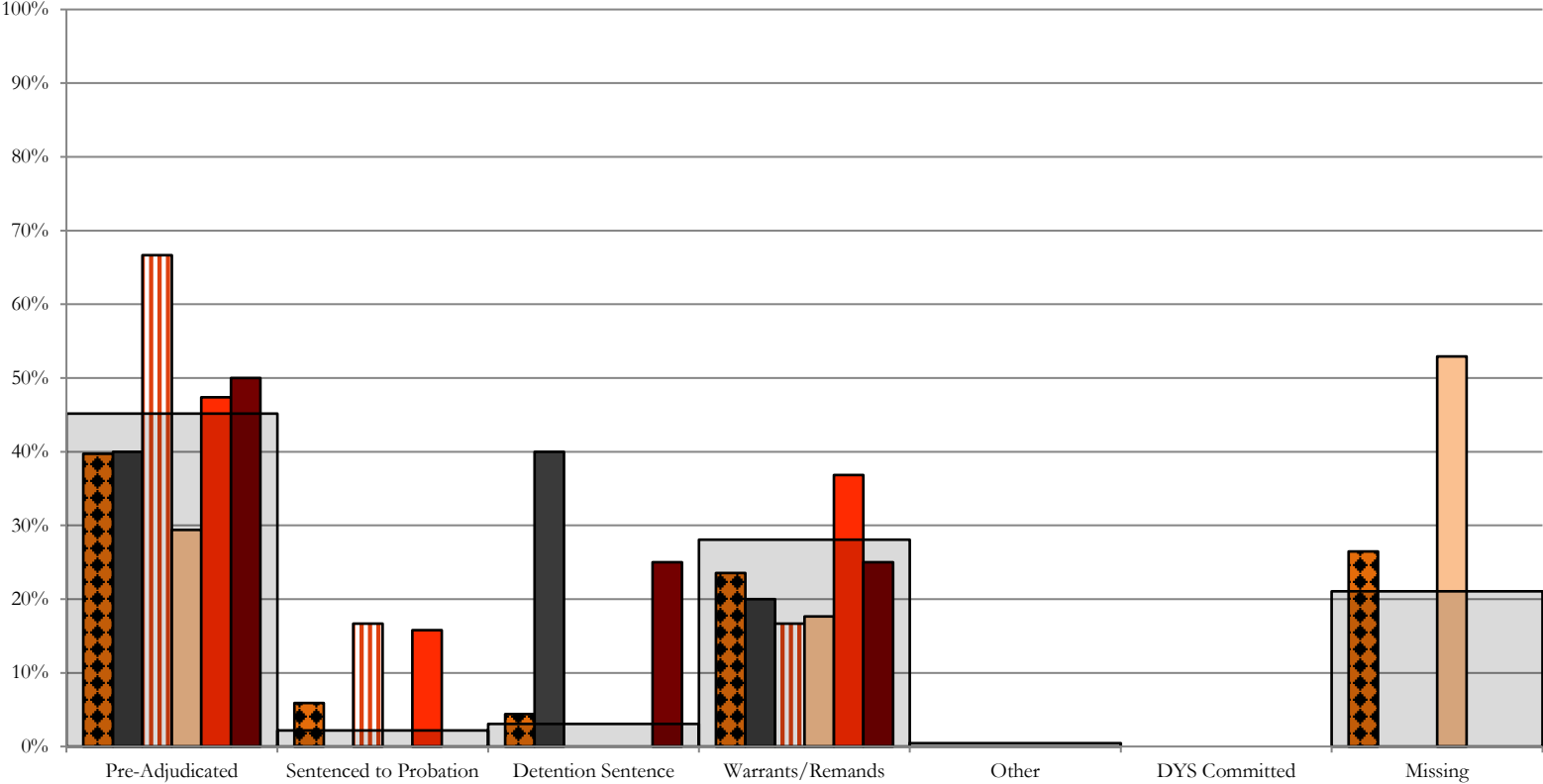
■ 2nd JD, 25 New Admits

■ STATEWIDE, 228 New Admits

Northeast Region

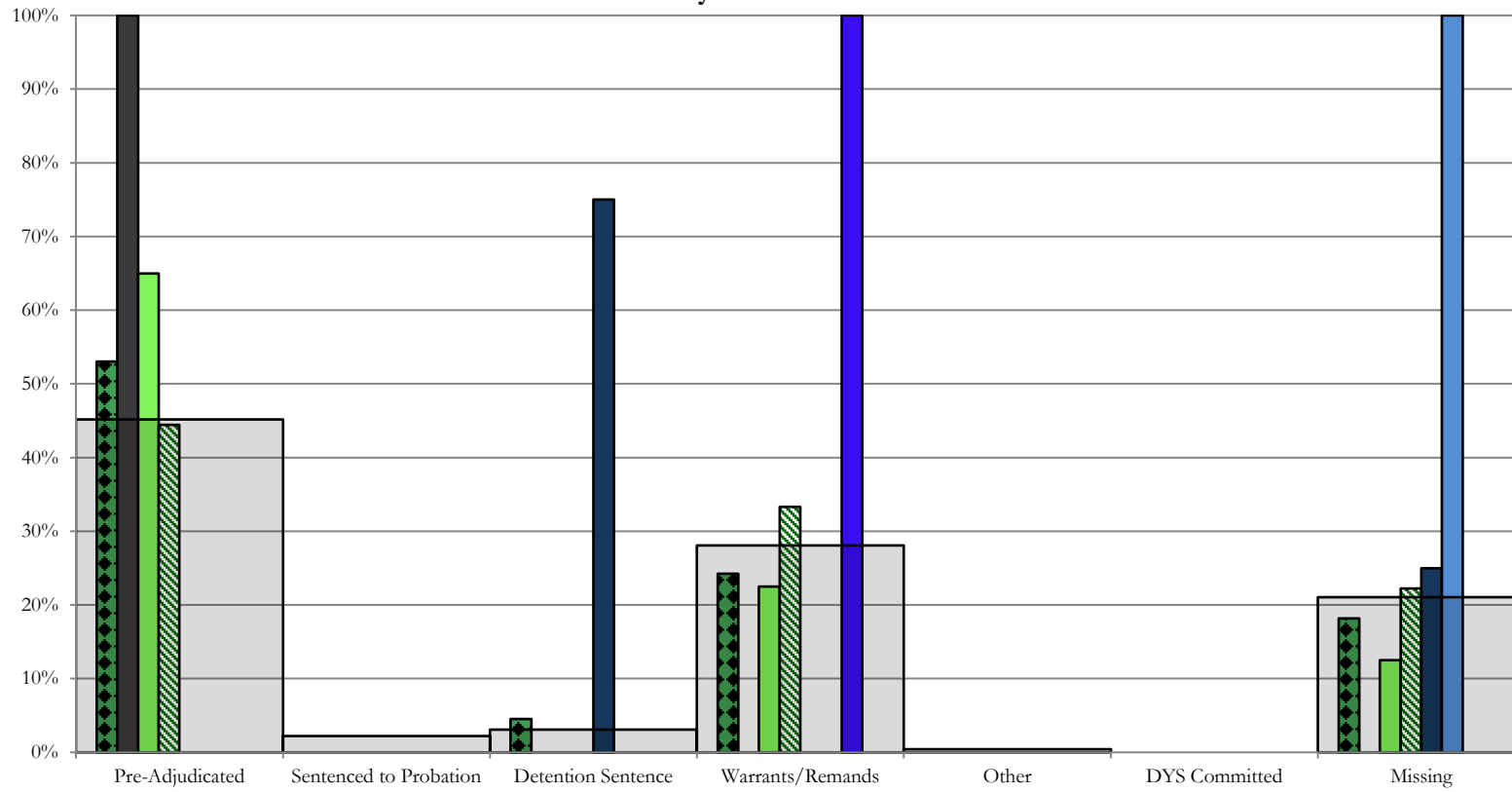
CYDC Reason Detained by Judicial District

May 2021 New Admits



- NORTHEAST REGION, 68 New Admits
- 8th JD, 5 New Admits
- 13th JD, 6 New Admits
- 17th JD, 34 New Admits
- 19th JD, 19 New Admits
- 20th JD, 4 New Admits
- STATEWIDE, 228 New Admits

Southern Region CYDC Reason Detained by Judicial District May 2021 New Admits



■ SOUTHERN REGION, 66 New Admits

■ 4th JD, 40 New Admits

■ 11th JD, 4 New Admits

■ 15th JD, 1 New Admits

■ STATEWIDE, 228 New Admits

■ 3rd JD, 1 New Admits

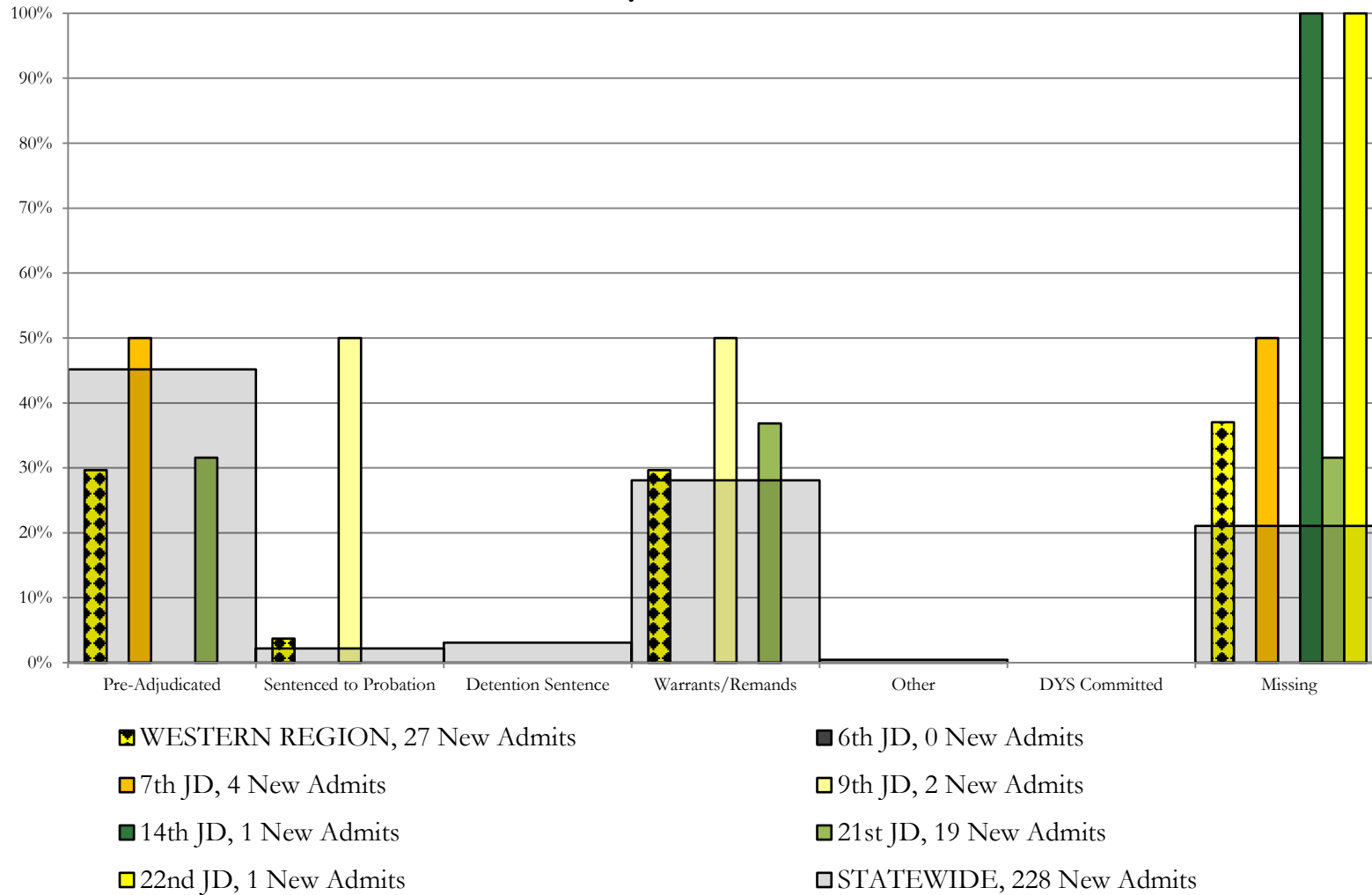
■ 10th JD, 18 New Admits

■ 12th JD, 2 New Admits

■ 16th JD, 0 New Admits

Western Region

CYDC Reason Detained by Judicial District May 2021 New Admits



May 2021 CYDC Supplemental Report

DYS Detention Maximum Youth Served by Judicial District¹

Region	JD	Detention Capacity	Detention ADP		Maximum Youth Served on a Single Day ^{2,3}			
			May 2021	YTD	May 2021		YTD	
					Number of Youth	% of Detention Capacity	Number of Youth	% of Detention Capacity
<i>Central</i>								
	1st	34	13.5	12.7	17	50.0%	19	55.9%
	2nd	53	25.0	29.0	35	66.0%	39	73.6%
	5th	2	1.1	0.5	2	100.0%	2	100.0%
	18th	56	21.0	23.6	25	44.6%	43	76.8%
Central Region		145	60.6	65.8	74	51.0%	88	60.7%
<i>Northeast</i>								
	8th	17	3.3	5.6	6	35.3%	11	64.7%
	13th	4	2.2	1.7	4	100.0%	6	150.0%
	17th	26	12.0	13.3	15	57.7%	19	73.1%
	19th	23	6.8	8.5	12	52.2%	17	73.9%
	20th	16	2.7	2.1	4	25.0%	6	37.5%
Northeast Region		86	27.1	31.3	35	40.7%	45	52.3%
<i>Southern</i>								
	3rd	2	1.2	1.8	2	100.0%	4	200.0%
	4th	41	30.5	30.3	36	87.8%	42	102.4%
	10th	15	6.7	4.5	10	66.7%	10	66.7%
	11th	4	0.3	0.7	2	50.0%	3	75.0%
	12th	2	1.7	0.7	3	150.0%	3	150.0%
	15th	2	1.4	0.7	2	100.0%	4	200.0%
	16th	2	0.0	0.5	0	0.0%	2	100.0%
Southern Region		68	41.9	39.2	49	72.1%	50	73.5%
<i>Western</i>								
	6th	2	0.3	1.1	1	50.0%	3	150.0%
	7th	5	2.8	1.8	5	100.0%	5	100.0%
	9th	4	0.2	0.5	1	25.0%	3	75.0%
	14th	2	0.9	0.3	1	50.0%	1	50.0%
	21st	13	5.8	5.9	11	84.6%	12	92.3%
	22nd	2	0.1	0.2	1	50.0%	2	100.0%
Western Region		28	10.1	9.8	17	60.7%	17	60.7%
<i>Missing JD or Multiple JDs</i>			2.4	0.9				
Statewide		327	142.0	146.9	162	49.5%	187	57.2%

¹ Maximum youth served is the highest number of youth in detention on a single day during the month or fiscal year.

² Regional figures are not the sum of judicial districts, but represent the maximum count on one day for the entire region.

³ State figures are not the sum of regional figures, but represent the maximum count on one day for the entire state.

May 2021 CYDC Supplemental Report

CYDC Community ADP by Judicial District

Region	JD	Committed		Diversion		ICJ		Municipal		Pre-Adjudicated		Sentenced		VCO		Total	
		May 2021	YTD	May 2021	YTD	May 2021	YTD	May 2021	YTD	May 2021	YTD	May 2021	YTD	May 2021	YTD	May 2021	YTD
<i>Central</i>																	
	1st	0.0	0.6	0.0	0.0	0.0	0.0	15.0	10.7	106.8	84.5	7.0	5.5	0.0	0.0	128.8	101.3
	2nd	3.3	1.4	0.0	0.3	0.0	0.1	0.0	0.0	94.7	95.3	30.0	34.9	0.0	0.0	128.0	132.1
	5th	0.0	0.0	7.0	7.2	0.0	0.0	0.0	0.0	12.0	8.5	41.4	40.9	0.0	0.0	60.4	56.7
	18th	0.0	0.0	1.0	1.2	0.1	0.1	1.0	1.0	228.4	241.7	41.5	33.0	0.0	0.0	272.0	277.0
Central Total		3.3	2.0	8.0	8.8	0.1	0.2	16.0	11.7	441.9	430.0	119.9	114.4	0.0	0.0	589.2	567.1
<i>Northeast</i>																	
	8th	0.0	0.0	6.9	4.4	0.0	0.0	0.0	0.0	62.6	52.6	23.0	24.7	0.0	0.0	92.5	81.7
	13th	0.0	0.0	0.0	0.0	0.0	0.0	24.1	22.3	15.0	11.4	2.7	2.0	2.3	1.8	44.1	37.5
	17th	0.0	0.0	2.1	0.9	0.0	0.0	0.0	0.0	176.3	137.3	18.5	14.8	0.0	0.0	196.9	153.0
	19th	0.0	1.8	0.0	0.3	0.0	0.0	1.6	0.5	34.2	48.7	21.7	18.2	5.4	1.3	62.8	71.0
	20th	0.0	0.0	38.8	45.3	0.0	0.0	0.0	0.2	60.7	51.9	10.3	7.1	0.0	0.0	109.8	104.4
Northeast Total		0.0	1.8	47.8	50.8	0.0	0.0	25.7	23.0	348.7	302.0	76.2	66.8	7.7	3.1	506.2	447.6
<i>Southern</i>																	
	3rd	0.0	0.0	0.0	0.0	0.0	0.0	0.0	0.0	7.2	6.7	1.0	1.5	1.4	0.4	9.6	8.7
	4th	2.0	1.0	0.0	0.0	0.0	0.0	20.6	21.4	191.1	166.5	40.5	36.6	0.0	0.0	254.3	225.5
	10th	1.0	0.4	0.0	0.0	0.0	0.0	3.0	0.5	21.5	16.9	10.5	5.5	0.9	0.1	36.9	23.5
	11th	0.0	0.0	0.0	0.0	0.0	0.0	16.0	13.0	17.2	18.1	6.0	4.4	0.0	0.0	39.2	35.5
	12th	0.0	0.0	1.3	2.0	0.0	0.0	1.0	1.8	13.8	8.8	0.0	0.6	0.0	0.0	16.0	13.2
	15th	0.0	0.0	1.0	1.0	0.0	0.0	0.0	0.0	11.6	7.8	11.0	10.4	0.0	0.0	23.6	19.2
	16th	0.0	0.0	0.0	0.0	0.0	0.0	0.0	0.0	5.0	5.6	1.0	1.0	44.7	35.8	50.7	42.4
Southern Total		3.0	1.5	2.3	3.0	0.0	0.0	40.6	36.8	267.4	230.4	70.0	60.1	47.0	36.3	430.3	368.1
<i>Western</i>																	
	6th	0.0	0.0	0.0	0.0	0.0	0.0	0.0	0.0	5.0	4.4	0.0	0.4	0.0	0.0	5.0	4.8
	7th	0.1	0.4	9.0	10.3	0.0	0.0	0.0	0.4	11.1	8.8	3.7	4.6	0.0	0.0	23.8	24.4
	9th	0.0	0.0	2.2	2.1	0.0	0.0	1.3	8.0	8.6	7.6	1.2	1.6	0.0	0.0	13.2	19.4
	14th	0.0	0.0	0.0	0.7	0.0	0.0	0.0	0.3	3.9	1.1	0.0	0.5	0.0	0.0	3.9	2.6
	21st	0.0	0.9	0.0	0.1	0.0	0.0	0.0	0.0	39.7	37.0	31.1	30.1	0.0	0.0	70.8	68.2
	22nd	0.0	0.0	2.0	0.9	0.0	0.0	0.0	0.0	10.3	8.3	10.0	7.9	0.0	0.0	22.3	17.1
Western Total		0.1	1.3	13.2	14.2	0.0	0.0	1.3	8.7	78.5	67.2	45.9	45.1	0.0	0.0	139.0	136.5
Statewide Total		6.4	6.6	71.3	76.8	0.1	0.3	83.7	80.2	1,136.5	1,029.6	312.1	286.4	54.7	39.4	1,664.7	1,519.3