

April 2021*

FY 2020-2021

CYDC JDSAG SUPPLEMENTAL REPORT

Prepared by the Division of Youth Services (DYS)

Data Management & Analysis

May 25, 2021

* Following the initial announcement of positive cases of COVID-19 in Colorado on March 5th, data presented in this report largely reflect COVID-19 response and Executive Order (EO) compliance across the detained, committed, and paroled populations. The statewide detention bed availability was temporarily reduced to 200 effective April 21, 2020 COB; DYS plans to return to official allocations (327) and bed borrowing practices upon expiration of the EO. Due to the temporary nature of the reduction, DYS continues to utilize official detention bed allocations within this report. Commitment population reductions and Parole population increases are a direct result of the Division's EO response, releasing an unprecedented number of youth from residential placement to parole.



COLORADO

Division of Youth Services

Office of Children, Youth & Families

April 2021 CYDC Supplemental Report

DYS Commitment ADP & New Commitments by Judicial District

| Region | JD ¹ | 2021 Population Estimates ² | ADP ³ | | New Commitments | | |
|------------------------|-----------------|--|------------------|--------------|-----------------|------------|-----------------------|
| | | | April 2021 | YTD | April 2021 | YTD | YTD Rate ⁴ |
| <i>Central</i> | | | | | | | |
| | 1st | 54,247 | 25.5 | 33.4 | 2 | 8 | 1.5 |
| | 2nd | 57,556 | 54.2 | 57.1 | 1 | 24 | 4.2 |
| | 5th | 9,148 | 3.0 | 3.0 | 0 | 1 | 1.1 |
| | 18th | 114,514 | 58.6 | 61.1 | 5 | 28 | 2.4 |
| Central Total | | 235,465 | 141.2 | 154.6 | 8 | 61 | 2.6 |
| <i>Northeast</i> | | | | | | | |
| | 8th | 35,120 | 14.9 | 16.2 | 1 | 13 | 3.7 |
| | 13th | 8,520 | 3.0 | 2.7 | 0 | 2 | 2.3 |
| | 17th | 69,653 | 30.4 | 31.7 | 1 | 12 | 1.7 |
| | 19th | 39,126 | 35.8 | 29.9 | 1 | 31 | 7.9 |
| | 20th | 30,663 | 8.0 | 6.0 | 0 | 3 | 1.0 |
| Northeast Total | | 183,082 | 92.1 | 86.5 | 3 | 61 | 3.3 |
| <i>Southern</i> | | | | | | | |
| | 3rd | 1,875 | 2.3 | 3.0 | 0 | 0 | 0.0 |
| | 4th | 84,107 | 44.8 | 53.5 | 1 | 15 | 1.8 |
| | 10th | 17,817 | 9.0 | 8.6 | 0 | 6 | 3.4 |
| | 11th | 7,367 | 3.0 | 3.4 | 0 | 1 | 1.4 |
| | 12th | 5,455 | 1.0 | 1.0 | 0 | 0 | 0.0 |
| | 15th | 2,111 | 4.0 | 3.4 | 0 | 1 | 4.7 |
| | 16th | 2,836 | 2.0 | 1.4 | 0 | 1 | 3.5 |
| Southern Total | | 121,568 | 66.1 | 74.3 | 1 | 24 | 2.0 |
| <i>Western</i> | | | | | | | |
| | 6th | 7,430 | 2.8 | 1.8 | 0 | 2 | 2.7 |
| | 7th | 10,673 | 3.0 | 2.4 | 0 | 3 | 2.8 |
| | 9th | 8,519 | 3.0 | 2.1 | 0 | 1 | 1.2 |
| | 14th | 5,788 | 0.0 | 0.0 | 0 | 0 | 0.0 |
| | 21st | 16,466 | 14.2 | 19.9 | 2 | 9 | 5.5 |
| | 22nd | 3,034 | 4.0 | 4.1 | 0 | 0 | 0.0 |
| Western Total | | 51,910 | 27.0 | 30.4 | 2 | 15 | 2.9 |
| Statewide Total | | 592,025 | 326.4 | 345.8 | 14 | 161 | 2.7 |

¹ JD represents the judicial district in which the client was committed. Regional totals are a sum of their respective judicial districts. Regional totals reported here may differ slightly from those reported in the Monthly Population Report, where region is defined by active caseloads.

² Source: DOLA 2021 Estimates.

³ Due to rounding, totals shown may not be an exact sum of the subtotals.

⁴ Per 10,000 youth in the population.

April 2021 CYDC Supplemental Report

DYS Detention ADP and New Detention Admissions by Judicial District

| Region | JD | 2021 Population Estimates ¹ | ADP | | New Admits | | YTD New Admit Rate ² |
|-----------------------------------|------|--|--------------|--------------|------------|--------------|------------------------------------|
| | | | April 2021 | YTD | April 2021 | YTD | |
| <i>Central</i> | | | | | | | |
| | 1st | 54,247 | 12.6 | 12.5 | 18 | 161 | 29.7 |
| | 2nd | 57,556 | 28.4 | 29.4 | 28 | 280 | 48.6 |
| | 5th | 9,148 | 0.6 | 0.4 | 1 | 9 | 9.8 |
| | 18th | 114,514 | 18.3 | 23.9 | 41 | 290 | 25.3 |
| Central Total | | 235,465 | 59.9 | 66.2 | 88 | 740 | 31.4 |
| <i>Northeast</i> | | | | | | | |
| | 8th | 35,120 | 5.7 | 5.8 | 5 | 82 | 23.3 |
| | 13th | 8,520 | 2.1 | 1.7 | 4 | 36 | 42.3 |
| | 17th | 69,653 | 12.9 | 13.5 | 14 | 148 | 21.2 |
| | 19th | 39,126 | 7.3 | 8.7 | 14 | 177 | 45.2 |
| | 20th | 30,663 | 2.3 | 2.0 | 4 | 57 | 18.6 |
| Northeast Total | | 183,082 | 30.3 | 31.7 | 41 | 500 | 27.3 |
| <i>Southern</i> | | | | | | | |
| | 3rd | 1,875 | 1.2 | 1.8 | 0 | 7 | 37.3 |
| | 4th | 84,107 | 26.2 | 30.3 | 20 | 355 | 42.2 |
| | 10th | 17,817 | 3.7 | 4.3 | 0 | 59 | 33.1 |
| | 11th | 7,367 | 0.0 | 0.7 | 0 | 17 | 23.1 |
| | 12th | 5,455 | 1.2 | 0.6 | 1 | 5 | 9.2 |
| | 15th | 2,111 | 0.5 | 0.6 | 3 | 12 | 56.8 |
| | 16th | 2,836 | 0.0 | 0.6 | 0 | 5 | 17.6 |
| Southern Total | | 121,568 | 32.9 | 38.9 | 24 | 460 | 37.8 |
| <i>Western</i> | | | | | | | |
| | 6th | 7,430 | 0.6 | 1.2 | 1 | 12 | 16.2 |
| | 7th | 10,673 | 1.9 | 1.8 | 2 | 23 | 21.5 |
| | 9th | 8,519 | 0.0 | 0.5 | 1 | 12 | 14.1 |
| | 14th | 5,788 | 1.0 | 0.2 | 0 | 2 | 3.5 |
| | 21st | 16,466 | 4.9 | 5.9 | 11 | 147 | 89.3 |
| | 22nd | 3,034 | 0.1 | 0.2 | 1 | 8 | 26.4 |
| Western Total | | 51,910 | 8.4 | 9.7 | 16 | 204 | 39.3 |
| <i>Missing JD or Multiple JDs</i> | | | 0.7 | 0.7 | | | |
| Statewide Total | | 592,025 | 132.2 | 147.2 | 169 | 1,904 | 32.2 |

¹ Source: DOLA 2021 Estimates.

² Per 10,000 youth in the population.

April 2021 CYDC Supplemental Report

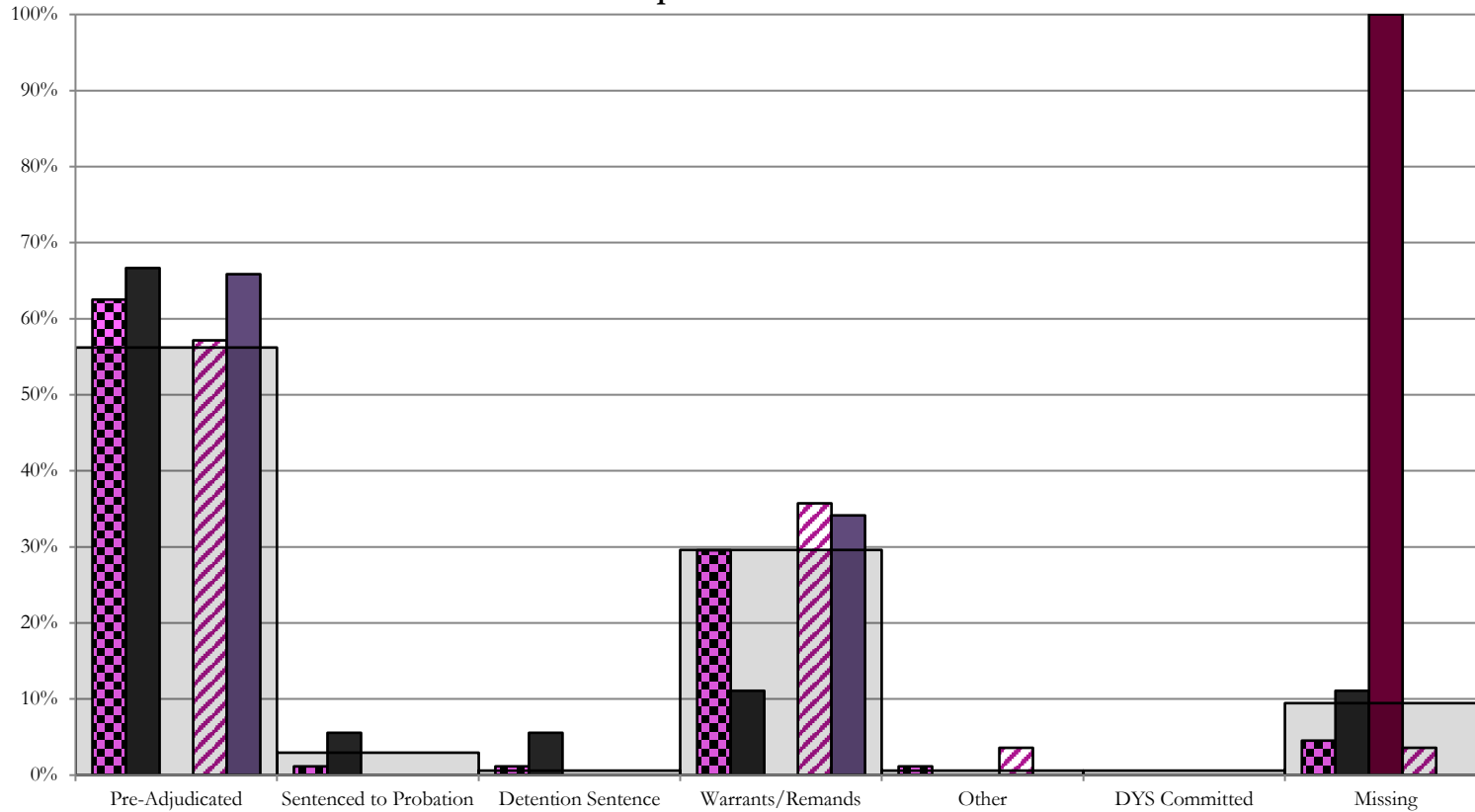
| DYS Detention LOS by Judicial District | | | | |
|--|------|---------------------------|-------------------|--|
| Region | JD | YTD Detention Releases | YTD LOS (days) | LOS (days) Compared to State AVG |
| <i>Central</i> | | | | |
| | 1st | 157 | 19.8 | -2.1 |
| | 2nd | 275 | 22.6 | 0.7 |
| | 5th | 8 | 26.2 | 4.3 |
| | 18th | 299 | 29.7 | 7.8 |
| Central Total | | 739 | 24.9 | 3.0 |
| <i>Northeast</i> | | | | |
| | 8th | 80 | 18.0 | -3.9 |
| | 13th | 35 | 14.9 | -7.0 |
| | 17th | 154 | 21.7 | -0.2 |
| | 19th | 175 | 13.2 | -8.7 |
| | 20th | 55 | 11.7 | -10.2 |
| Northeast Total | | 499 | 16.5 | -5.3 |
| <i>Southern</i> | | | | |
| | 3rd | 7 | 23.5 | 1.6 |
| | 4th | 360 | 20.4 | -1.4 |
| | 10th | 58 | 18.0 | -3.9 |
| | 11th | 18 | 10.4 | -11.5 |
| | 12th | 4 | 84.0 | 62.2 |
| | 15th | 11 | 15.1 | -6.8 |
| | 16th | 5 | 33.7 | 11.8 |
| Southern Total | | 463 | 20.3 | -1.5 |
| <i>Western</i> | | | | |
| | 6th | 10 | 28.5 | 6.6 |
| | 7th | 21 | 14.5 | -7.4 |
| | 9th | 12 | 12.5 | -9.4 |
| | 14th | 1 | 3.0 | -18.9 |
| | 21st | 140 | 9.2 | -12.7 |
| | 22nd | 9 | 4.1 | -17.8 |
| Western Total | | 193 | 10.7 | -11.2 |
| Statewide Total | | 1,899 | 21.9 | - |

April 2021 CDYC Supplemental Report

CYDC Reason Detained (RD) by Judicial District

| Region | JD | Monthly New Admits | Pre-Adjudicated | | | | Sentenced to Probation | | | | Detention Sentence | | | | Warrants/Remands | | | | Other | | | | DYS Committed | | Missing | | | | | | | | | | | | | |
|-----------------------------|------|--------------------|-----------------|--------------|-------------|--------------|------------------------|-------------|-------------|-------------|--------------------|-------------|--------------------|-------------|---------------------------------|-------------|--|-------------|-------------------------|--------------|-------------------------|-------------|--|-------------|------------------|-------------|--------------|-------------|------------------------|-------------|---------------|-------------|----------|-------------|-----------|-------------|-----------|-----------|
| | | | Felony | | Misdemeanor | | Technical Violator | | New Charges | | Probation Sentence | | Detention Sentence | | Valid Court Order (VCO) Truancy | | Awaiting DSS (Social Services) Placement | | Failure to Appear (FTA) | | Failure to Comply (FIC) | | Interstate Compact on Juveniles (ICJ) Hold | | Immigration Hold | | No Bond Hold | | Out-of-Country Warrant | | Institutional | | Parole | | Missing | | | |
| | | | # | % | # | % | # | % | # | % | # | % | # | % | # | % | # | % | # | % | # | % | # | % | # | % | # | % | # | % | # | % | # | % | | | | |
| Central | | | | | | | | | | | | | | | | | | | | | | | | | | | | | | | | | | | | | | |
| | 1st | 18 | 11 | 61.1% | 1 | 5.6% | 1 | 5.6% | 0 | 0.0% | 0 | 0.0% | 1 | 5.6% | 0 | 0.0% | 0 | 0.0% | 1 | 5.6% | 1 | 5.6% | 0 | 0.0% | 0 | 0.0% | 0 | 0.0% | 0 | 0.0% | 0 | 0.0% | 0 | 0.0% | 2 | 11.1% | | |
| | 2nd | 28 | 12 | 42.9% | 4 | 14.3% | 0 | 0.0% | 0 | 0.0% | 0 | 0.0% | 0 | 0.0% | 0 | 0.0% | 0 | 0.0% | 4 | 14.3% | 6 | 21.4% | 1 | 3.6% | 0 | 0.0% | 0 | 0.0% | 0 | 0.0% | 0 | 0.0% | 0 | 0.0% | 1 | 3.6% | | |
| | 5th | 1 | 0 | 0.0% | 0 | 0.0% | 0 | 0.0% | 0 | 0.0% | 0 | 0.0% | 0 | 0.0% | 0 | 0.0% | 0 | 0.0% | 0 | 0.0% | 0 | 0.0% | 0 | 0.0% | 0 | 0.0% | 0 | 0.0% | 0 | 0.0% | 0 | 0.0% | 0 | 0.0% | 1 | 100.0% | | |
| | 18th | 41 | 19 | 46.3% | 8 | 19.5% | 0 | 0.0% | 0 | 0.0% | 0 | 0.0% | 0 | 0.0% | 0 | 0.0% | 0 | 0.0% | 3 | 7.3% | 11 | 26.8% | 0 | 0.0% | 0 | 0.0% | 0 | 0.0% | 0 | 0.0% | 0 | 0.0% | 0 | 0.0% | 0 | 0.0% | | |
| Central Total | | 88 | 42 | 48% | 13 | 15% | 1 | 1.1% | 0 | 0.0% | 0 | 0.0% | 1 | 1.1% | 0 | 0.0% | 0 | 0.0% | 8 | 9% | 18 | 20% | 1 | 1.1% | 0 | 0.0% | 0 | 0.0% | 0 | 0.0% | 0 | 0.0% | 0 | 0.0% | 4 | 4.5% | | |
| Northeast | | | | | | | | | | | | | | | | | | | | | | | | | | | | | | | | | | | | | | |
| | 8th | 5 | 1 | 20.0% | 1 | 20.0% | 0 | 0.0% | 0 | 0.0% | 0 | 0.0% | 0 | 0.0% | 0 | 0.0% | 0 | 0.0% | 1 | 20.0% | 1 | 20.0% | 0 | 0.0% | 0 | 0.0% | 0 | 0.0% | 0 | 0.0% | 0 | 0.0% | 0 | 0.0% | 0 | 0.0% | 1 | 20.0% |
| | 13th | 4 | 1 | 25.0% | 1 | 25.0% | 0 | 0.0% | 0 | 0.0% | 0 | 0.0% | 0 | 0.0% | 0 | 0.0% | 0 | 0.0% | 0 | 0.0% | 0 | 0.0% | 0 | 0.0% | 0 | 0.0% | 0 | 0.0% | 0 | 0.0% | 0 | 0.0% | 0 | 0.0% | 2 | 50.0% | | |
| | 17th | 14 | 6 | 42.9% | 2 | 14.3% | 0 | 0.0% | 0 | 0.0% | 0 | 0.0% | 0 | 0.0% | 0 | 0.0% | 0 | 0.0% | 1 | 7.1% | 1 | 7.1% | 0 | 0.0% | 0 | 0.0% | 0 | 0.0% | 0 | 0.0% | 0 | 0.0% | 0 | 0.0% | 4 | 28.6% | | |
| | 19th | 14 | 4 | 28.6% | 3 | 21.4% | 3 | 21.4% | 0 | 0.0% | 0 | 0.0% | 0 | 0.0% | 0 | 0.0% | 0 | 0.0% | 0 | 0.0% | 4 | 28.6% | 0 | 0.0% | 0 | 0.0% | 0 | 0.0% | 0 | 0.0% | 0 | 0.0% | 0 | 0.0% | 0 | 0.0% | 0 | 0.0% |
| | 20th | 4 | 1 | 25.0% | 1 | 25.0% | 0 | 0.0% | 0 | 0.0% | 0 | 0.0% | 0 | 0.0% | 0 | 0.0% | 0 | 0.0% | 0 | 0.0% | 1 | 25.0% | 0 | 0.0% | 0 | 0.0% | 0 | 0.0% | 0 | 0.0% | 0 | 0.0% | 0 | 0.0% | 0 | 0.0% | 1 | 25.0% |
| Northeast Total | | 41 | 13 | 32% | 8 | 20% | 3 | 7.3% | 0 | 0.0% | 0 | 0.0% | 0 | 0.0% | 0 | 0.0% | 0 | 0.0% | 2 | 4.9% | 7 | 17% | 0 | 0.0% | 0 | 0.0% | 0 | 0.0% | 0 | 0.0% | 0 | 0.0% | 0 | 0.0% | 8 | 20% | | |
| Southern | | | | | | | | | | | | | | | | | | | | | | | | | | | | | | | | | | | | | | |
| | 3rd | 0 | 0 | 0.0% | 0 | 0.0% | 0 | 0.0% | 0 | 0.0% | 0 | 0.0% | 0 | 0.0% | 0 | 0.0% | 0 | 0.0% | 0 | 0.0% | 0 | 0.0% | 0 | 0.0% | 0 | 0.0% | 0 | 0.0% | 0 | 0.0% | 0 | 0.0% | 0 | 0.0% | 0 | 0.0% | | |
| | 4th | 20 | 9 | 45.0% | 5 | 25.0% | 0 | 0.0% | 0 | 0.0% | 0 | 0.0% | 0 | 0.0% | 0 | 0.0% | 0 | 0.0% | 3 | 15.0% | 2 | 10.0% | 0 | 0.0% | 0 | 0.0% | 0 | 0.0% | 0 | 0.0% | 0 | 0.0% | 0 | 0.0% | 0 | 0.0% | 1 | 5.0% |
| | 10th | 0 | 0 | 0.0% | 0 | 0.0% | 0 | 0.0% | 0 | 0.0% | 0 | 0.0% | 0 | 0.0% | 0 | 0.0% | 0 | 0.0% | 0 | 0.0% | 0 | 0.0% | 0 | 0.0% | 0 | 0.0% | 0 | 0.0% | 0 | 0.0% | 0 | 0.0% | 0 | 0.0% | 0 | 0.0% | | |
| | 11th | 0 | 0 | 0.0% | 0 | 0.0% | 0 | 0.0% | 0 | 0.0% | 0 | 0.0% | 0 | 0.0% | 0 | 0.0% | 0 | 0.0% | 0 | 0.0% | 0 | 0.0% | 0 | 0.0% | 0 | 0.0% | 0 | 0.0% | 0 | 0.0% | 0 | 0.0% | 0 | 0.0% | 0 | 0.0% | | |
| | 12th | 1 | 0 | 0.0% | 0 | 0.0% | 0 | 0.0% | 0 | 0.0% | 0 | 0.0% | 0 | 0.0% | 0 | 0.0% | 0 | 0.0% | 1 | 100.0% | 0 | 0.0% | 0 | 0.0% | 0 | 0.0% | 0 | 0.0% | 0 | 0.0% | 0 | 0.0% | 0 | 0.0% | 0 | 0.0% | | |
| | 15th | 3 | 1 | 33.3% | 0 | 0.0% | 0 | 0.0% | 0 | 0.0% | 0 | 0.0% | 0 | 0.0% | 0 | 0.0% | 0 | 0.0% | 0 | 0.0% | 0 | 0.0% | 0 | 0.0% | 0 | 0.0% | 0 | 0.0% | 0 | 0.0% | 0 | 0.0% | 0 | 0.0% | 2 | 66.7% | | |
| | 16th | 0 | 0 | 0.0% | 0 | 0.0% | 0 | 0.0% | 0 | 0.0% | 0 | 0.0% | 0 | 0.0% | 0 | 0.0% | 0 | 0.0% | 0 | 0.0% | 0 | 0.0% | 0 | 0.0% | 0 | 0.0% | 0 | 0.0% | 0 | 0.0% | 0 | 0.0% | 0 | 0.0% | 0 | 0.0% | | |
| Southern Total | | 24 | 10 | 42% | 5 | 21% | 0 | 0.0% | 0 | 0.0% | 0 | 0.0% | 0 | 0.0% | 0 | 0.0% | 0 | 0.0% | 4 | 17% | 2 | 8% | 0 | 0.0% | 0 | 0.0% | 0 | 0.0% | 0 | 0.0% | 0 | 0.0% | 0 | 0.0% | 3 | 13% | | |
| Western | | | | | | | | | | | | | | | | | | | | | | | | | | | | | | | | | | | | | | |
| | 6th | 1 | 0 | 0.0% | 0 | 0.0% | 0 | 0.0% | 0 | 0.0% | 0 | 0.0% | 0 | 0.0% | 0 | 0.0% | 0 | 0.0% | 0 | 0.0% | 0 | 0.0% | 0 | 0.0% | 0 | 0.0% | 0 | 0.0% | 0 | 0.0% | 0 | 0.0% | 0 | 0.0% | 1 | 100% | | |
| | 7th | 2 | 0 | 0.0% | 0 | 0.0% | 0 | 0.0% | 0 | 0.0% | 0 | 0.0% | 0 | 0.0% | 0 | 0.0% | 0 | 0.0% | 0 | 0.0% | 1 | 50.0% | 0 | 0.0% | 0 | 0.0% | 0 | 0.0% | 0 | 0.0% | 1 | 50.0% | 0 | 0.0% | 0 | 0% | | |
| | 9th | 1 | 0 | 0.0% | 0 | 0.0% | 1 | 100.0% | 0 | 0.0% | 0 | 0.0% | 0 | 0.0% | 0 | 0.0% | 0 | 0.0% | 0 | 0.0% | 0 | 0.0% | 0 | 0.0% | 0 | 0.0% | 0 | 0.0% | 0 | 0.0% | 0 | 0.0% | 0 | 0.0% | 0 | 0% | | |
| | 14th | 0 | 0 | 0.0% | 0 | 0.0% | 0 | 0.0% | 0 | 0.0% | 0 | 0.0% | 0 | 0.0% | 0 | 0.0% | 0 | 0.0% | 0 | 0.0% | 0 | 0.0% | 0 | 0.0% | 0 | 0.0% | 0 | 0.0% | 0 | 0.0% | 0 | 0.0% | 0 | 0.0% | 0 | 0% | | |
| | 21st | 11 | 2 | 18.2% | 1 | 9.1% | 0 | 0.0% | 0 | 0.0% | 0 | 0.0% | 0 | 0.0% | 0 | 0.0% | 0 | 0.0% | 1 | 9.1% | 7 | 63.6% | 0 | 0.0% | 0 | 0.0% | 0 | 0.0% | 0 | 0.0% | 0 | 0.0% | 0 | 0.0% | 0 | 0% | | |
| | 22nd | 1 | 0 | 0.0% | 1 | 100.0% | 0 | 0.0% | 0 | 0.0% | 0 | 0.0% | 0 | 0.0% | 0 | 0.0% | 0 | 0.0% | 0 | 0.0% | 0 | 0.0% | 0 | 0.0% | 0 | 0.0% | 0 | 0.0% | 0 | 0.0% | 0 | 0.0% | 0 | 0.0% | 0 | 0% | | |
| Western Total | | 16 | 2 | 13% | 2 | 12.5% | 1 | 6.3% | 0 | 0.0% | 0 | 0.0% | 0 | 0.0% | 0 | 0.0% | 0 | 0.0% | 1 | 6.3% | 8 | 50% | 0 | 0.0% | 0 | 0.0% | 0 | 0.0% | 0 | 0.0% | 0 | 0.0% | 1 | 6.3% | 0 | 0.0% | 1 | 6% |
| Individual RD Totals | | 169 | 67 | 40% | 28 | 17% | 5 | 3.0% | 0 | 0.0% | 0 | 0.0% | 1 | 0.6% | 0 | 0.0% | 0 | 0.0% | 15 | 9% | 35 | 21% | 1 | 0.6% | 0 | 0.0% | 0 | 0.0% | 0 | 0.0% | 0 | 0.0% | 1 | 0.6% | 0 | 0.0% | 16 | 9% |
| Statewide Totals | | 169 | 95 | 56.2% | 5 | 3.0% | 1 | 0.6% | 0 | 0.0% | 0 | 0.0% | 1 | 0.6% | 0 | 0.0% | 0 | 0.0% | 50 | 29.6% | 1 | 0.6% | 0 | 0.0% | 0 | 0.0% | 0 | 0.0% | 0 | 0.0% | 1 | 0.6% | 0 | 0.0% | 16 | 9% | | |

Central Region CYDC Reason Detained by Judicial District April 2021 New Admits



■ CENTRAL REGION, 88 New Admits

■ 1st JD, 18 New Admits

■ 5th JD, 1 New Admits

■ 2nd JD, 28 New Admits

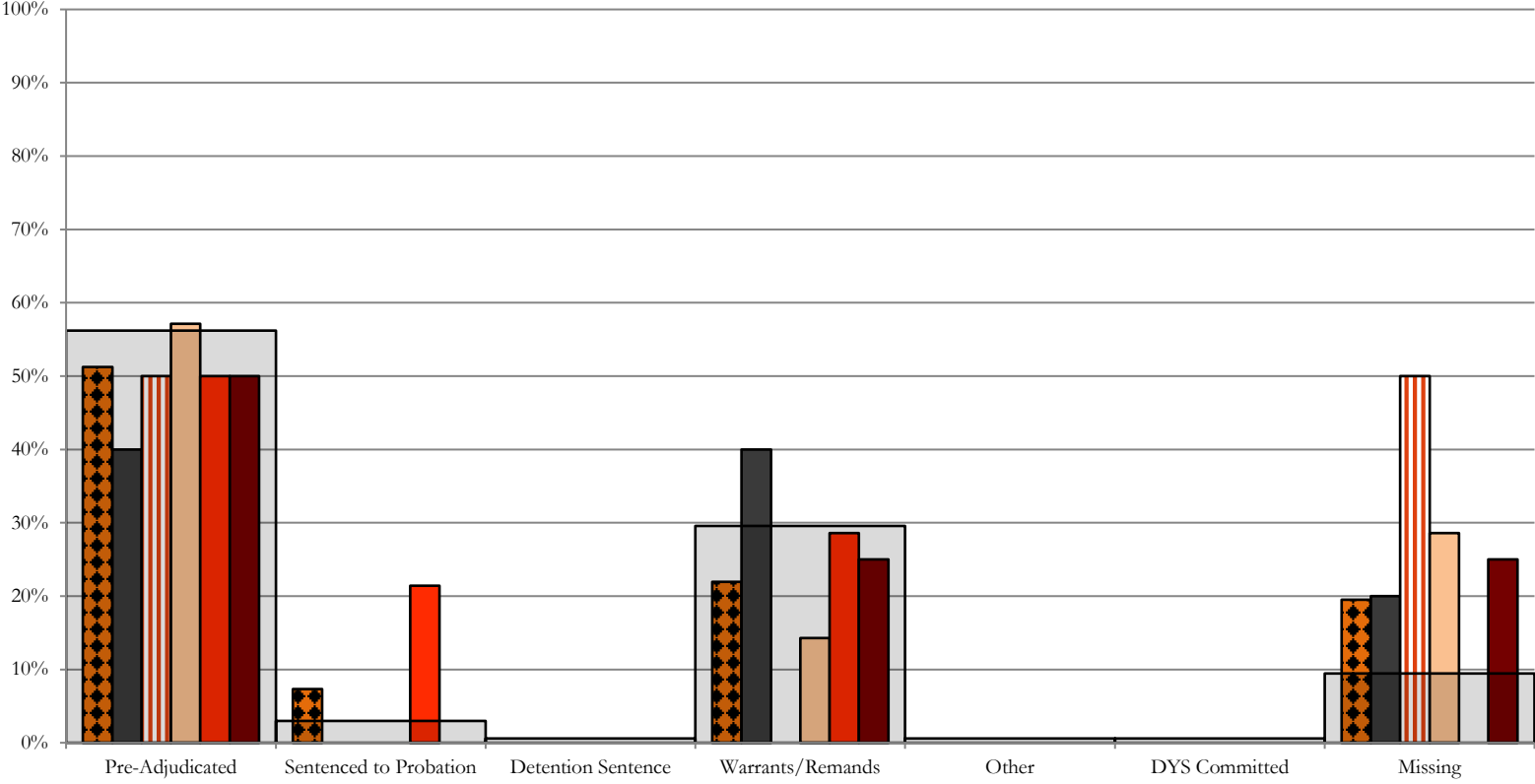
■ 18th JD, 41 New Admits

■ STATEWIDE, 169 New Admits

Northeast Region

CYDC Reason Detained by Judicial District

April 2021 New Admits



■ NORTHEAST REGION, 41 New Admits

■ 8th JD, 5 New Admits

■ 13th JD, 4 New Admits

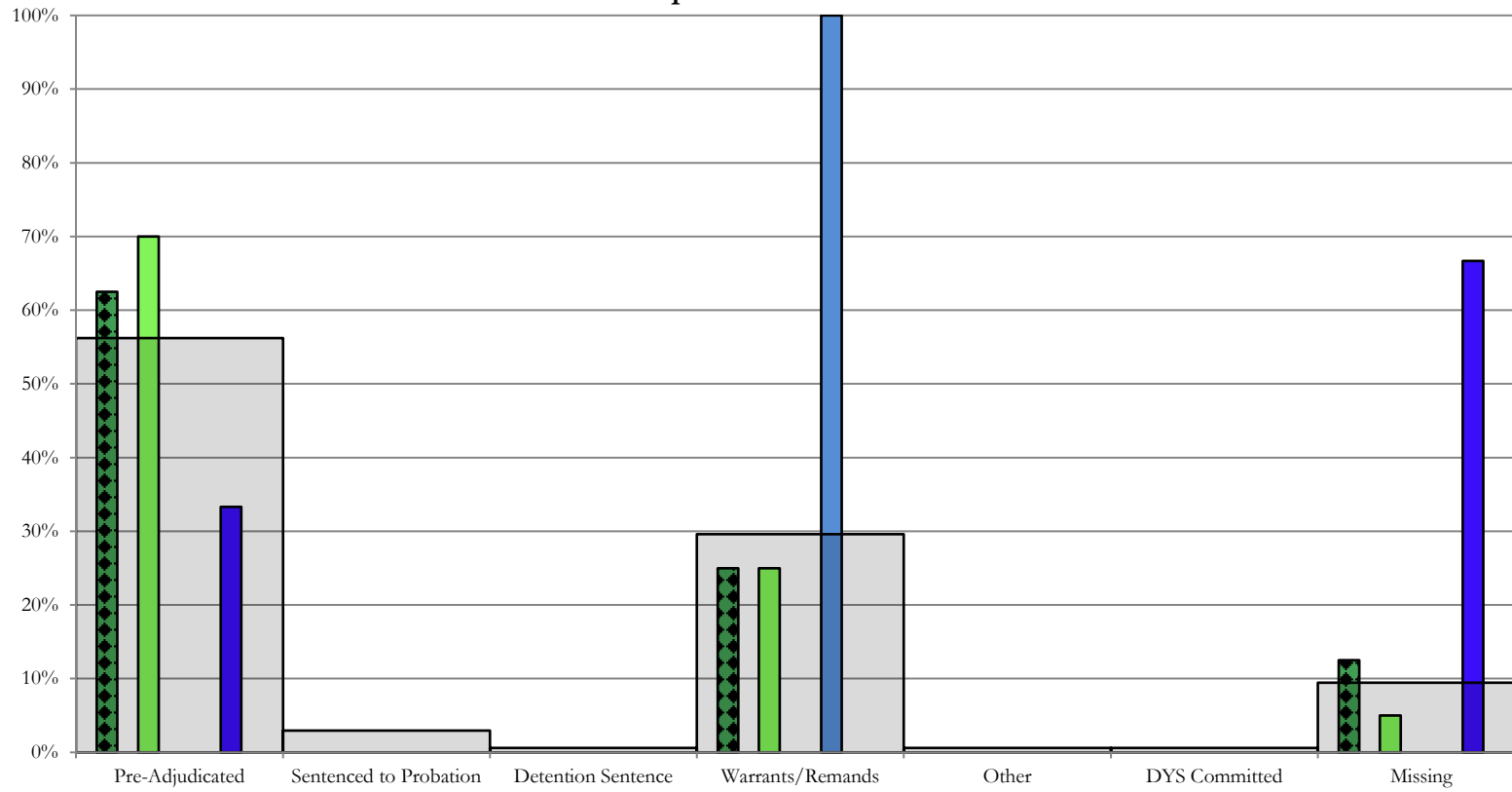
■ 17th JD, 14 New Admits

■ 19th JD, 14 New Admits

■ 20th JD, 4 New Admits

■ STATEWIDE, 169 New Admits

Southern Region CYDC Reason Detained by Judicial District April 2021 New Admits



■ SOUTHERN REGION, 24 New Admits

■ 4th JD, 20 New Admits

■ 11th JD, 0 New Admits

■ 15th JD, 3 New Admits

■ STATEWIDE, 169 New Admits

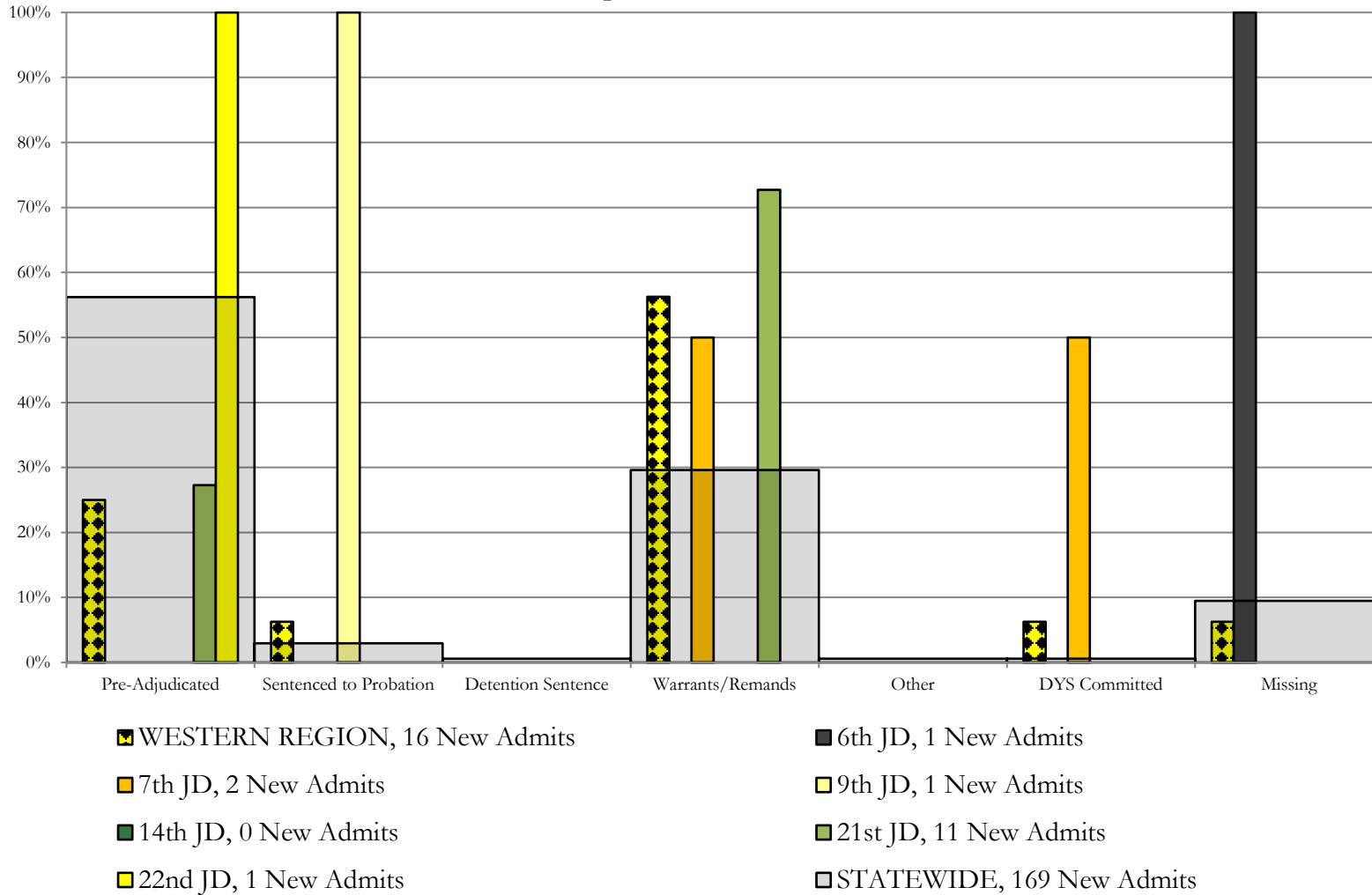
■ 3rd JD, 0 New Admits

■ 10th JD, 0 New Admits

■ 12th JD, 1 New Admits

■ 16th JD, 0 New Admits

Western Region CYDC Reason Detained by Judicial District April 2021 New Admits



April 2021 CYDC Supplemental Report

DYS Detention Maximum Youth Served by Judicial District¹

| Region | JD | Detention Capacity | Detention ADP | | Maximum Youth Served on a Single Day ^{2,3} | | | |
|-----------------------------------|------|--------------------|---------------|--------------|---|-------------------------|-----------------|-------------------------|
| | | | April 2021 | YTD | April 2021 | | YTD | |
| | | | | | Number of Youth | % of Detention Capacity | Number of Youth | % of Detention Capacity |
| <i>Central</i> | | | | | | | | |
| | 1st | 34 | 12.6 | 12.5 | 17 | 50.0% | 19 | 55.9% |
| | 2nd | 53 | 28.4 | 29.4 | 35 | 66.0% | 39 | 73.6% |
| | 5th | 2 | 0.6 | 0.4 | 1 | 50.0% | 2 | 100.0% |
| | 18th | 56 | 18.3 | 23.9 | 25 | 44.6% | 43 | 76.8% |
| Central Region | | 145 | 59.9 | 66.2 | 74 | 51.0% | 88 | 60.7% |
| <i>Northeast</i> | | | | | | | | |
| | 8th | 17 | 5.7 | 5.8 | 11 | 64.7% | 11 | 64.7% |
| | 13th | 4 | 2.1 | 1.7 | 3 | 75.0% | 6 | 150.0% |
| | 17th | 26 | 12.9 | 13.5 | 18 | 69.2% | 19 | 73.1% |
| | 19th | 23 | 7.3 | 8.7 | 12 | 52.2% | 17 | 73.9% |
| | 20th | 16 | 2.3 | 2.0 | 4 | 25.0% | 6 | 37.5% |
| Northeast Region | | 86 | 30.3 | 31.7 | 41 | 47.7% | 45 | 52.3% |
| <i>Southern</i> | | | | | | | | |
| | 3rd | 2 | 1.2 | 1.8 | 2 | 100.0% | 4 | 200.0% |
| | 4th | 41 | 26.2 | 30.3 | 31 | 75.6% | 42 | 102.4% |
| | 10th | 15 | 3.7 | 4.3 | 6 | 40.0% | 8 | 53.3% |
| | 11th | 4 | 0.0 | 0.7 | 0 | 0.0% | 3 | 75.0% |
| | 12th | 2 | 1.2 | 0.6 | 2 | 100.0% | 2 | 100.0% |
| | 15th | 2 | 0.5 | 0.6 | 3 | 150.0% | 4 | 200.0% |
| | 16th | 2 | 0.0 | 0.6 | 0 | 0.0% | 2 | 100.0% |
| Southern Region | | 68 | 32.9 | 38.9 | 39 | 57.4% | 50 | 73.5% |
| <i>Western</i> | | | | | | | | |
| | 6th | 2 | 0.6 | 1.2 | 1 | 50.0% | 3 | 150.0% |
| | 7th | 5 | 1.9 | 1.8 | 3 | 60.0% | 4 | 80.0% |
| | 9th | 4 | 0.0 | 0.5 | 1 | 25.0% | 3 | 75.0% |
| | 14th | 2 | 1.0 | 0.2 | 1 | 50.0% | 1 | 50.0% |
| | 21st | 13 | 4.9 | 5.9 | 8 | 61.5% | 12 | 92.3% |
| | 22nd | 2 | 0.1 | 0.2 | 1 | 50.0% | 2 | 100.0% |
| Western Region | | 28 | 8.4 | 9.7 | 12 | 42.9% | 17 | 60.7% |
| <i>Missing JD or Multiple JDs</i> | | | 0.7 | 0.7 | | | | |
| Statewide | | 327 | 132.2 | 147.2 | 159 | 48.6% | 186 | 56.9% |

¹ Maximum youth served is the highest number of youth in detention on a single day during the month or fiscal year.

² Regional figures are not the sum of judicial districts, but represent the maximum count on one day for the entire region.

³ State figures are not the sum of regional figures, but represent the maximum count on one day for the entire state.

April 2021 CYDC Supplemental Report

CYDC Community ADP by Judicial District

| Region | JD | Committed | | Diversion | | ICJ | | Municipal | | Pre-Adjudicated | | Sentenced | | VCO | | Total | |
|------------------------|------|------------|------------|-------------|-------------|------------|------------|-------------|-------------|-----------------|----------------|--------------|--------------|-------------|-------------|----------------|----------------|
| | | April 2021 | YTD | April 2021 | YTD | April 2021 | YTD | April 2021 | YTD | April 2021 | YTD | April 2021 | YTD | April 2021 | YTD | April 2021 | YTD |
| <i>Central</i> | | | | | | | | | | | | | | | | | |
| | 1st | 0.0 | 0.6 | 0.0 | 0.0 | 0.0 | 0.0 | 8.8 | 10.3 | 96.9 | 81.3 | 6.9 | 5.4 | 0.0 | 0.0 | 112.6 | 97.6 |
| | 2nd | 2.4 | 1.2 | 0.0 | 0.4 | 0.0 | 0.1 | 0.0 | 0.0 | 77.9 | 95.4 | 31.4 | 35.4 | 0.0 | 0.0 | 111.8 | 132.5 |
| | 5th | 0.0 | 0.0 | 7.0 | 7.3 | 0.0 | 0.0 | 0.0 | 0.0 | 9.0 | 7.3 | 37.0 | 39.5 | 0.0 | 0.0 | 53.0 | 54.1 |
| | 18th | 0.0 | 0.0 | 1.0 | 1.2 | 0.0 | 0.1 | 1.0 | 1.0 | 224.8 | 242.7 | 42.2 | 33.8 | 0.0 | 0.0 | 269.0 | 278.9 |
| Central Total | | 2.4 | 1.8 | 8.0 | 8.8 | 0.0 | 0.2 | 9.8 | 11.3 | 408.7 | 426.7 | 117.5 | 114.2 | 0.0 | 0.0 | 546.4 | 563.1 |
| <i>Northeast</i> | | | | | | | | | | | | | | | | | |
| | 8th | 0.0 | 0.0 | 6.5 | 4.1 | 0.0 | 0.0 | 0.0 | 0.0 | 69.4 | 51.9 | 27.1 | 24.9 | 0.0 | 0.0 | 103.0 | 80.9 |
| | 13th | 0.0 | 0.0 | 0.0 | 0.0 | 0.0 | 0.0 | 25.0 | 22.1 | 12.4 | 11.1 | 2.0 | 2.0 | 1.8 | 1.7 | 41.2 | 36.9 |
| | 17th | 0.0 | 0.0 | 2.0 | 0.8 | 0.0 | 0.0 | 0.0 | 0.0 | 163.5 | 131.5 | 17.0 | 14.2 | 0.0 | 0.0 | 182.5 | 146.5 |
| | 19th | 0.3 | 2.0 | 0.0 | 0.3 | 0.0 | 0.0 | 2.0 | 0.4 | 33.2 | 50.2 | 17.7 | 17.9 | 4.5 | 0.9 | 57.8 | 71.8 |
| | 20th | 0.0 | 0.0 | 35.8 | 45.8 | 0.0 | 0.0 | 0.0 | 0.2 | 58.9 | 50.6 | 8.6 | 6.7 | 0.0 | 0.0 | 103.4 | 103.3 |
| Northeast Total | | 0.3 | 2.0 | 44.4 | 51.0 | 0.0 | 0.0 | 27.0 | 22.7 | 337.5 | 295.3 | 72.3 | 65.7 | 6.3 | 2.6 | 487.9 | 439.4 |
| <i>Southern</i> | | | | | | | | | | | | | | | | | |
| | 3rd | 0.0 | 0.0 | 0.0 | 0.0 | 0.0 | 0.0 | 0.0 | 0.0 | 11.7 | 8.6 | 2.7 | 1.7 | 1.0 | 0.3 | 15.4 | 10.6 |
| | 4th | 2.0 | 0.9 | 0.0 | 0.0 | 0.0 | 0.0 | 20.0 | 21.5 | 195.2 | 163.6 | 41.1 | 36.5 | 0.0 | 0.0 | 258.3 | 222.5 |
| | 10th | 1.0 | 0.4 | 0.0 | 0.0 | 0.0 | 0.0 | 0.6 | 0.1 | 18.1 | 16.2 | 7.1 | 4.7 | 1.1 | 0.2 | 27.9 | 21.5 |
| | 11th | 0.0 | 0.0 | 0.0 | 0.0 | 0.0 | 0.0 | 21.9 | 18.1 | 29.0 | 26.7 | 9.4 | 8.3 | 0.0 | 0.0 | 60.2 | 53.0 |
| | 12th | 0.0 | 0.0 | 3.0 | 2.1 | 0.0 | 0.0 | 1.0 | 1.9 | 6.6 | 8.1 | 0.0 | 0.7 | 0.0 | 0.0 | 10.6 | 12.8 |
| | 15th | 0.0 | 0.0 | 1.0 | 1.0 | 0.0 | 0.0 | 0.0 | 0.0 | 9.0 | 7.1 | 11.0 | 10.4 | 0.0 | 0.0 | 21.0 | 18.5 |
| | 16th | 0.0 | 0.0 | 0.0 | 0.0 | 0.0 | 0.0 | 0.0 | 0.0 | 5.0 | 5.7 | 1.0 | 1.0 | 37.6 | 33.0 | 43.6 | 39.7 |
| Southern Total | | 3.0 | 1.3 | 4.0 | 3.1 | 0.0 | 0.0 | 43.5 | 41.6 | 274.7 | 235.9 | 72.3 | 63.2 | 39.7 | 33.6 | 437.2 | 378.6 |
| <i>Western</i> | | | | | | | | | | | | | | | | | |
| | 6th | 0.0 | 0.0 | 0.0 | 0.0 | 0.0 | 0.0 | 0.0 | 0.0 | 5.0 | 4.3 | 0.0 | 0.5 | 0.0 | 0.0 | 5.0 | 4.8 |
| | 7th | 1.0 | 0.4 | 10.7 | 10.4 | 0.0 | 0.0 | 0.0 | 0.4 | 10.8 | 8.5 | 3.4 | 5.0 | 0.0 | 0.0 | 25.9 | 24.8 |
| | 9th | 0.0 | 0.0 | 2.0 | 2.0 | 0.0 | 0.0 | 2.0 | 8.7 | 9.4 | 7.1 | 0.6 | 1.6 | 0.0 | 0.0 | 14.0 | 19.4 |
| | 14th | 0.0 | 0.0 | 0.0 | 0.8 | 0.0 | 0.0 | 0.0 | 0.3 | 3.0 | 0.9 | 0.0 | 0.6 | 0.0 | 0.0 | 3.0 | 2.7 |
| | 21st | 0.0 | 1.0 | 0.0 | 0.1 | 0.0 | 0.0 | 0.0 | 0.0 | 37.5 | 36.4 | 32.0 | 30.0 | 0.0 | 0.0 | 69.5 | 67.5 |
| | 22nd | 0.0 | 0.0 | 1.0 | 0.8 | 0.0 | 0.0 | 0.0 | 0.0 | 6.0 | 8.1 | 8.0 | 7.1 | 0.0 | 0.0 | 15.0 | 16.1 |
| Western Total | | 1.0 | 1.5 | 13.7 | 14.1 | 0.0 | 0.0 | 2.0 | 9.4 | 71.7 | 65.4 | 44.0 | 44.8 | 0.0 | 0.0 | 132.4 | 135.3 |
| Statewide Total | | 6.7 | 6.6 | 70.1 | 77.1 | 0.0 | 0.3 | 82.3 | 85.0 | 1,092.5 | 1,023.3 | 306.2 | 287.8 | 46.0 | 36.2 | 1,603.8 | 1,516.4 |