

March 2021*

FY 2020-2021

CYDC JDSAG SUPPLEMENTAL REPORT

Prepared by the Division of Youth Services (DYS)

Data Management & Analysis

April 22, 2021

* Following the initial announcement of positive cases of COVID-19 in Colorado on March 5th, data presented in this report largely reflect COVID-19 response and Executive Order (EO) compliance across the detained, committed, and paroled populations. The statewide detention bed availability was temporarily reduced to 200 effective April 21, 2020 COB; DYS plans to return to official allocations (327) and bed borrowing practices upon expiration of the EO. Due to the temporary nature of the reduction, DYS continues to utilize official detention bed allocations within this report. Commitment population reductions and Parole population increases are a direct result of the Division's EO response, releasing an unprecedented number of youth from residential placement to parole.



COLORADO

Division of Youth Services

Office of Children, Youth & Families

March 2021 CYDC Supplemental Report

DYS Commitment ADP & New Commitments by Judicial District

Region	JD ¹	2021 Population Estimates ²	ADP ³		New Commitments		
			March 2021	YTD	March 2021	YTD	YTD Rate ⁴
<i>Central</i>							
	1st	54,247	25.7	34.3	0	6	1.1
	2nd	57,556	54.0	57.4	1	23	4.0
	5th	9,148	3.0	3.0	0	1	1.1
	18th	114,514	56.1	61.3	5	23	2.0
Central Total		235,465	138.8	156.1	6	53	2.3
<i>Northeast</i>							
	8th	35,120	13.9	16.3	2	12	3.4
	13th	8,520	3.0	2.7	0	2	2.3
	17th	69,653	30.5	31.8	1	11	1.6
	19th	39,126	33.9	29.3	6	30	7.7
	20th	30,663	8.0	5.8	0	3	1.0
Northeast Total		183,082	89.4	85.9	9	58	3.2
<i>Southern</i>							
	3rd	1,875	3.0	3.1	0	0	0.0
	4th	84,107	47.1	54.5	2	14	1.7
	10th	17,817	8.5	8.6	1	6	3.4
	11th	7,367	3.0	3.4	0	1	1.4
	12th	5,455	1.0	1.0	0	0	0.0
	15th	2,111	4.0	3.3	0	1	4.7
	16th	2,836	1.2	1.3	1	1	3.5
Southern Total		121,568	67.8	75.2	4	23	1.9
<i>Western</i>							
	6th	7,430	3.0	1.7	0	2	2.7
	7th	10,673	3.0	2.4	0	3	2.8
	9th	8,519	3.0	2.0	0	1	1.2
	14th	5,788	0.0	0.0	0	0	0.0
	21st	16,466	14.5	20.5	2	7	4.3
	22nd	3,034	4.0	4.2	0	0	0.0
Western Total		51,910	27.4	30.8	2	13	2.5
Statewide Total		592,025	323.4	347.9	21	147	2.5

¹ JD represents the judicial district in which the client was committed. Regional totals are a sum of their respective judicial districts. Regional totals reported here may differ slightly from those reported in the Monthly Population Report, where region is defined by active caseloads.

² Source: DOLA 2021 Estimates.

³ Due to rounding, totals shown may not be an exact sum of the subtotals.

⁴ Per 10,000 youth in the population.

March 2021 CYDC Supplemental Report

DYS Detention ADP and New Detention Admissions by Judicial District

Region	JD	2021 Population Estimates ¹	ADP		New Admits		
			March 2021	YTD	March 2021	YTD	YTD New Admit Rate ²
<i>Central</i>							
	1st	54,247	12.2	12.5	14	143	26.4
	2nd	57,556	33.1	29.5	32	252	43.8
	5th	9,148	1.0	0.4	0	8	8.7
	18th	114,514	22.6	24.5	29	249	21.7
Central Total		235,465	68.8	66.9	75	652	27.7
<i>Northeast</i>							
	8th	35,120	7.8	5.8	8	77	21.9
	13th	8,520	1.6	1.6	6	32	37.6
	17th	69,653	12.9	13.5	13	134	19.2
	19th	39,126	4.1	8.9	7	163	41.7
	20th	30,663	2.6	2.0	8	53	17.3
Northeast Total		183,082	28.9	31.8	42	459	25.1
<i>Southern</i>							
	3rd	1,875	2.0	1.9	0	7	37.3
	4th	84,107	27.8	30.8	40	335	39.8
	10th	17,817	5.6	4.3	7	59	33.1
	11th	7,367	0.7	0.8	0	17	23.1
	12th	5,455	1.0	0.5	0	4	7.3
	15th	2,111	0.4	0.6	0	9	42.6
	16th	2,836	0.8	0.6	0	5	17.6
Southern Total		121,568	38.2	39.5	47	436	35.9
<i>Western</i>							
	6th	7,430	0.8	1.2	1	11	14.8
	7th	10,673	1.9	1.7	2	21	19.7
	9th	8,519	0.0	0.6	0	11	12.9
	14th	5,788	1.0	0.1	1	2	3.5
	21st	16,466	6.3	6.0	13	136	82.6
	22nd	3,034	0.0	0.2	0	7	23.1
Western Total		51,910	10.0	9.9	17	188	36.2
<i>Missing JD or Multiple JDs</i>			<i>0.4</i>	<i>0.7</i>			
Statewide Total		592,025	146.3	148.9	181	1,735	29.3

¹ Source: DOLA 2021 Estimates.

² Per 10,000 youth in the population.

March 2021 CYDC Supplemental Report

DYS Detention LOS by Judicial District				
Region	JD	YTD Detention Releases	YTD LOS (days)	LOS (days) Compared to State AVG
<i>Central</i>				
	1st	141	20.5	-0.7
	2nd	243	22.1	0.9
	5th	7	23.6	2.3
	18th	261	31.5	10.2
Central Total		652	25.5	4.3
<i>Northeast</i>				
	8th	67	14.3	-6.9
	13th	32	14.2	-7.1
	17th	135	14.3	-6.9
	19th	160	13.0	-8.3
	20th	51	11.5	-9.8
Northeast Total		445	13.5	-7.8
<i>Southern</i>				
	3rd	6	14.4	-6.9
	4th	341	20.3	-0.9
	10th	55	16.0	-5.3
	11th	18	10.4	-10.9
	12th	4	84.0	62.8
	15th	9	18.3	-3.0
	16th	5	33.7	12.5
Southern Total		438	20.0	-1.3
<i>Western</i>				
	6th	9	28.8	7.5
	7th	20	15.2	-6.1
	9th	11	13.6	-7.7
	14th	1	3.0	-18.2
	21st	131	9.1	-12.1
	22nd	8	4.5	-16.7
Western Total		180	10.8	-10.4
Statewide Total		1,720	21.3	-

**March 2021
CDYC Supplemental Report**

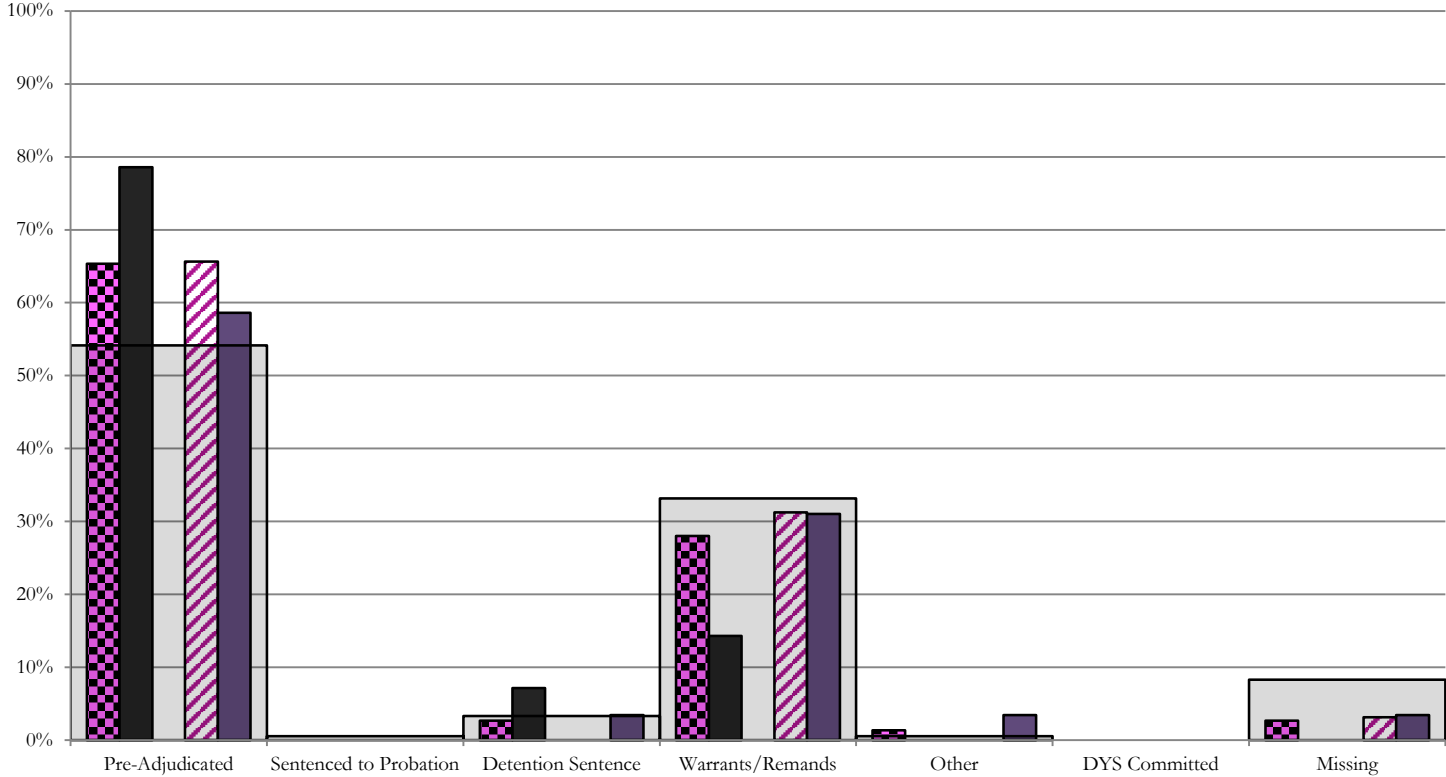
CYDC Reason Detained (RD) by Judicial District

Region	JD	Pre-Adjudicated				Sentenced to Probation				Detention Sentence						Warrants/Remands				Other						DYS Committed			Missing									
		Felony		Misdemeanor		Technical Violator		New Charges		Probation Sentence		Detention Sentence		Valid Court Order (VCO) Truancy		Awaiting DSS (Social Services) Placement		Failure to Appear (FTA)		Failure to Comply (FTC)		Interstate Compact on Juveniles (ICJ) Hold		Immigration Hold		No Bond Hold		Out-of-Country Warrant		Institutional		Parole	Missing					
		#	%	#	%	#	%	#	%	#	%	#	%	#	%	#	%	#	%	#	%	#	%	#	%	#	%	#	%	#	%	#	%	#	%			
Central																																						
	1st	14	10	71.4%	1	7.1%	0	0.0%	0	0.0%	0	0.0%	0	0.0%	0	0.0%	1	7.1%	2	14.3%	0	0.0%	0	0.0%	0	0.0%	0	0.0%	0	0.0%	0	0.0%	0	0.0%	0	0.0%	0	0.0%
	2nd	32	14	43.8%	7	21.9%	0	0.0%	0	0.0%	0	0.0%	0	0.0%	0	0.0%	0	0.0%	4	12.5%	6	18.8%	0	0.0%	0	0.0%	0	0.0%	0	0.0%	0	0.0%	0	0.0%	0	0.0%	1	3.1%
	5th	0	0	0.0%	0	0.0%	0	0.0%	0	0.0%	0	0.0%	0	0.0%	0	0.0%	0	0.0%	0	0.0%	0	0.0%	0	0.0%	0	0.0%	0	0.0%	0	0.0%	0	0.0%	0	0.0%	0	0.0%	0	0.0%
	18th	29	12	41.4%	5	17.2%	0	0.0%	0	0.0%	0	0.0%	1	3.4%	0	0.0%	0	0.0%	0	0.0%	9	31.0%	1	3.4%	0	0.0%	0	0.0%	0	0.0%	0	0.0%	0	0.0%	0	0.0%	1	3.4%
	Central Total	75	36	48%	13	17%	0	0.0%	0	0.0%	0	0.0%	1	1.3%	0	0.0%	1	1.3%	6	8%	15	20%	1	1.3%	0	0.0%	0	0.0%	0	0.0%	0	0.0%	0	0.0%	0	0.0%	2	2.7%
Northeast																																						
	8th	8	3	37.5%	0	0.0%	1	12.5%	0	0.0%	0	0.0%	2	25.0%	0	0.0%	0	0.0%	1	12.5%	0	0.0%	0	0.0%	0	0.0%	0	0.0%	0	0.0%	0	0.0%	0	0.0%	0	0.0%	1	12.5%
	13th	6	1	16.7%	1	16.7%	0	0.0%	0	0.0%	0	0.0%	0	0.0%	0	0.0%	0	0.0%	0	0.0%	2	33.3%	0	0.0%	0	0.0%	0	0.0%	0	0.0%	0	0.0%	0	0.0%	0	0.0%	2	33.3%
	17th	13	4	30.8%	1	7.7%	0	0.0%	0	0.0%	0	0.0%	0	0.0%	0	0.0%	0	0.0%	2	15.4%	3	23.1%	0	0.0%	0	0.0%	0	0.0%	0	0.0%	0	0.0%	0	0.0%	0	0.0%	3	23.1%
	19th	7	4	57.1%	1	14.3%	0	0.0%	0	0.0%	0	0.0%	0	0.0%	0	0.0%	0	0.0%	1	14.3%	1	14.3%	0	0.0%	0	0.0%	0	0.0%	0	0.0%	0	0.0%	0	0.0%	0	0.0%	0	0.0%
	20th	8	0	0.0%	4	50.0%	0	0.0%	0	0.0%	0	0.0%	0	0.0%	0	0.0%	0	0.0%	1	0.0%	3	37.5%	0	0.0%	0	0.0%	0	0.0%	0	0.0%	0	0.0%	0	0.0%	0	0.0%	1	12.5%
	Northeast Total	42	12	29%	7	17%	1	2.4%	0	0.0%	0	0.0%	2	4.8%	0	0.0%	0	0.0%	4	9.5%	9	21%	0	0.0%	0	0.0%	0	0.0%	0	0.0%	0	0.0%	0	0.0%	0	0.0%	7	17%
Southern																																						
	3rd	0	0	0.0%	0	0.0%	0	0.0%	0	0.0%	0	0.0%	0	0.0%	0	0.0%	0	0.0%	0	0.0%	0	0.0%	0	0.0%	0	0.0%	0	0.0%	0	0.0%	0	0.0%	0	0.0%	0	0.0%	0	0.0%
	4th	40	19	47.5%	6	15.0%	0	0.0%	0	0.0%	0	0.0%	1	2.5%	0	0.0%	0	0.0%	8	20.0%	4	10.0%	0	0.0%	0	0.0%	0	0.0%	0	0.0%	0	0.0%	0	0.0%	0	0.0%	2	5.0%
	10th	7	1	14.3%	0	0.0%	0	0.0%	0	0.0%	0	0.0%	1	14.3%	0	0.0%	0	0.0%	1	14.3%	3	42.9%	0	0.0%	0	0.0%	0	0.0%	0	0.0%	0	0.0%	0	0.0%	0	0.0%	1	14.3%
	11th	0	0	0.0%	0	0.0%	0	0.0%	0	0.0%	0	0.0%	0	0.0%	0	0.0%	0	0.0%	0	0.0%	0	0.0%	0	0.0%	0	0.0%	0	0.0%	0	0.0%	0	0.0%	0	0.0%	0	0.0%	0	0.0%
	12th	0	0	0.0%	0	0.0%	0	0.0%	0	0.0%	0	0.0%	0	0.0%	0	0.0%	0	0.0%	0	0.0%	0	0.0%	0	0.0%	0	0.0%	0	0.0%	0	0.0%	0	0.0%	0	0.0%	0	0.0%	0	0.0%
	15th	0	0	0.0%	0	0.0%	0	0.0%	0	0.0%	0	0.0%	0	0.0%	0	0.0%	0	0.0%	0	0.0%	0	0.0%	0	0.0%	0	0.0%	0	0.0%	0	0.0%	0	0.0%	0	0.0%	0	0.0%	0	0.0%
	16th	0	0	0.0%	0	0.0%	0	0.0%	0	0.0%	0	0.0%	0	0.0%	0	0.0%	0	0.0%	0	0.0%	0	0.0%	0	0.0%	0	0.0%	0	0.0%	0	0.0%	0	0.0%	0	0.0%	0	0.0%	0	0.0%
	Southern Total	47	20	43%	6	13%	0	0.0%	0	0.0%	0	0.0%	2	4.3%	0	0.0%	0	0.0%	9	19%	7	15%	0	0.0%	0	0.0%	0	0.0%	0	0.0%	0	0.0%	0	0.0%	0	0.0%	3	6%
Western																																						
	6th	1	0	0.0%	0	0.0%	0	0.0%	0	0.0%	0	0.0%	0	0.0%	0	0.0%	0	0.0%	0	0.0%	0	0.0%	0	0.0%	0	0.0%	0	0.0%	0	0.0%	0	0.0%	0	0.0%	0	0.0%	1	100%
	7th	2	1	50.0%	0	0.0%	0	0.0%	0	0.0%	0	0.0%	0	0.0%	0	0.0%	0	0.0%	1	50.0%	0	0.0%	0	0.0%	0	0.0%	0	0.0%	0	0.0%	0	0.0%	0	0.0%	0	0.0%	0	0%
	9th	0	0	0.0%	0	0.0%	0	0.0%	0	0.0%	0	0.0%	0	0.0%	0	0.0%	0	0.0%	0	0.0%	0	0.0%	0	0.0%	0	0.0%	0	0.0%	0	0.0%	0	0.0%	0	0.0%	0	0.0%	0	0%
	14th	1	0	0.0%	1	100.0%	0	0.0%	0	0.0%	0	0.0%	0	0.0%	0	0.0%	0	0.0%	0	0.0%	0	0.0%	0	0.0%	0	0.0%	0	0.0%	0	0.0%	0	0.0%	0	0.0%	0	0.0%	0	0%
	21st	13	0	0.0%	2	15.4%	0	0.0%	0	0.0%	0	0.0%	0	0.0%	0	0.0%	0	0.0%	0	0.0%	9	69.2%	0	0.0%	0	0.0%	0	0.0%	0	0.0%	0	0.0%	0	0.0%	0	0.0%	2	15%
	22nd	0	0	0.0%	0	0.0%	0	0.0%	0	0.0%	0	0.0%	0	0.0%	0	0.0%	0	0.0%	0	0.0%	0	0.0%	0	0.0%	0	0.0%	0	0.0%	0	0.0%	0	0.0%	0	0.0%	0	0.0%	0	0%
	Western Total	17	1	6%	3	17.6%	0	0.0%	0	0.0%	0	0.0%	0	0.0%	0	0.0%	0	0.0%	1	5.9%	9	53%	0	0.0%	0	0.0%	0	0.0%	0	0.0%	0	0.0%	0	0.0%	0	0.0%	3	18%
Individual RD Totals		181	69	38%	29	16%	1	0.6%	0	0.0%	0	0.0%	5	2.8%	0	0.0%	1	0.6%	20	11%	40	22%	1	0.6%	0	0.0%	0	0.0%	0	0.0%	0	0.0%	0	0.0%	0	0.0%	15	8%
Statewide Totals		181	98	54.1%	1	0.6%	0	0.0%	0	0.0%	6	3.3%	0	0.0%	1	0.6%	60	33.1%	1	0.6%	0	0.0%	1	0.6%	0	0.0%	0	0.0%	0	0.0%	0	0.0%	0	0.0%	15	8%		

Central Region

CYDC Reason Detained by Judicial District

March 2021 New Admits

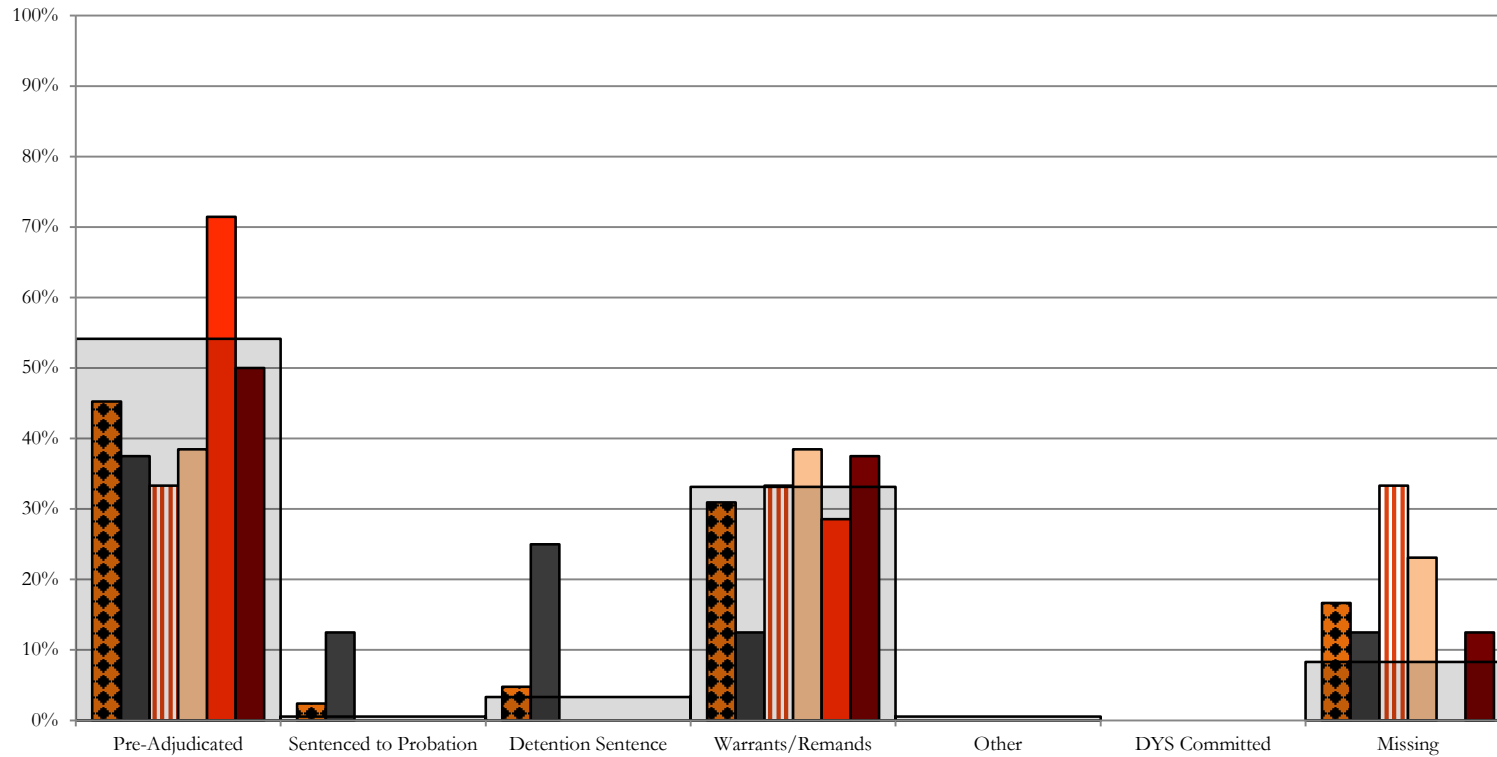


- CENTRAL REGION, 75 New Admits
- 1st JD, 14 New Admits
- 5th JD, 0 New Admits
- 2nd JD, 32 New Admits
- 18th JD, 29 New Admits
- STATEWIDE, 181 New Admits

Northeast Region

CYDC Reason Detained by Judicial District

March 2021 New Admits



■ NORTHEAST REGION, 42 New Admits

■ 13th JD, 6 New Admits

■ 19th JD, 7 New Admits

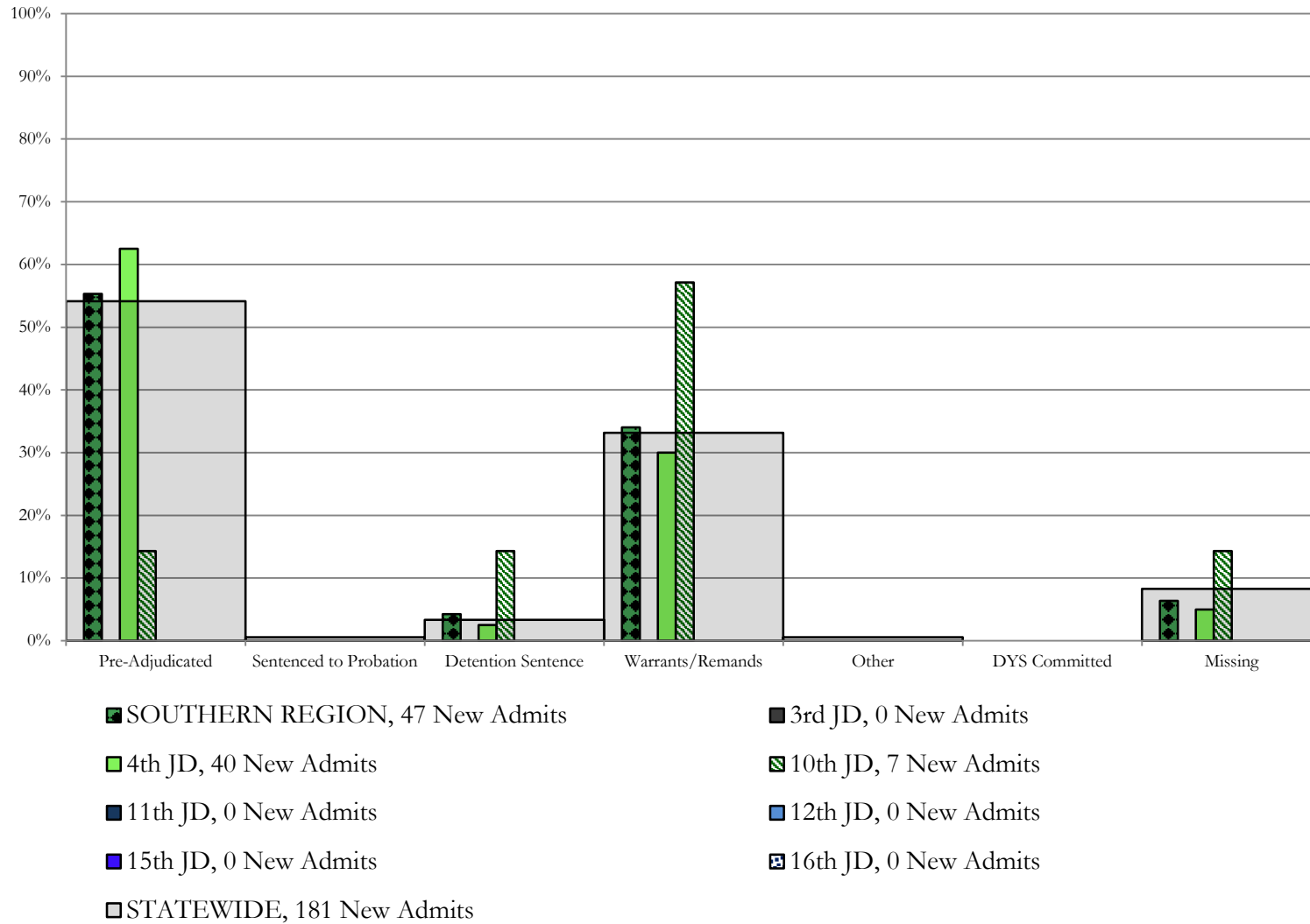
■ STATEWIDE, 181 New Admits

■ 8th JD, 8 New Admits

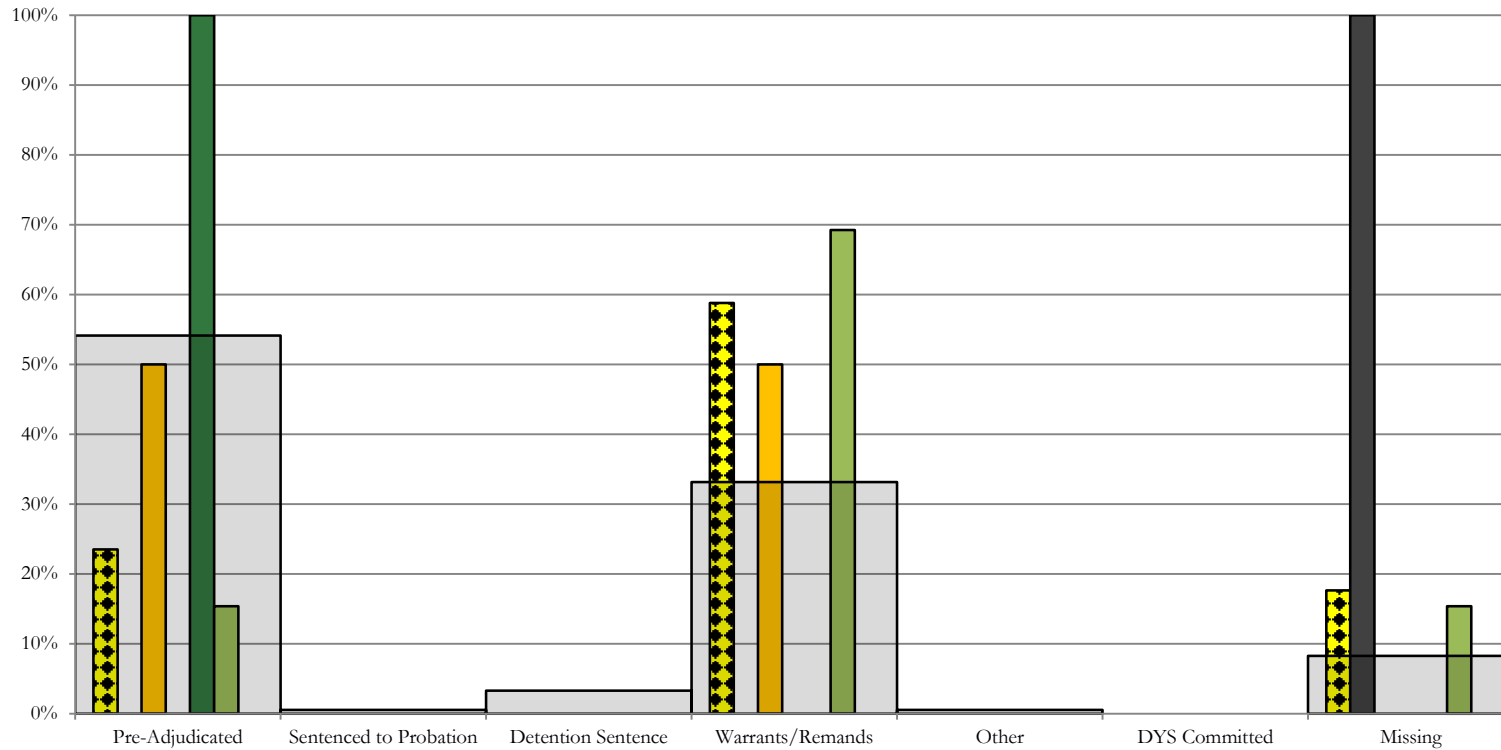
■ 17th JD, 13 New Admits

■ 20th JD, 8 New Admits

Southern Region CYDC Reason Detained by Judicial District March 2021 New Admits



Western Region CYDC Reason Detained by Judicial District March 2021 New Admits



■ WESTERN REGION, 17 New Admits

■ 7th JD, 2 New Admits

■ 14th JD, 1 New Admits

■ 22nd JD, 0 New Admits

■ 6th JD, 1 New Admits

■ 9th JD, 0 New Admits

■ 21st JD, 13 New Admits

■ STATEWIDE, 181 New Admits

March 2021 CYDC Supplemental Report

DYS Detention Maximum Youth Served by Judicial District¹

Region	JD	Detention Capacity	Detention ADP		Maximum Youth Served on a Single Day ^{2,3}			
			March 2021	YTD	March 2021		YTD	
					Number of Youth	% of Detention Capacity	Number of Youth	% of Detention Capacity
<i>Central</i>								
	1st	34	12.2	12.5	0	0.0%	19	55.9%
	2nd	53	33.1	29.5	39	73.6%	39	73.6%
	5th	2	1.0	0.4	1	50.0%	2	100.0%
	18th	56	22.6	24.5	27	48.2%	43	76.8%
Central Region		145	68.8	66.9	76	52.4%	84	57.9%
<i>Northeast</i>								
	8th	17	7.8	5.8	11	64.7%	11	64.7%
	13th	4	1.6	1.6	4	100.0%	6	150.0%
	17th	26	12.9	13.5	16	61.5%	19	73.1%
	19th	23	4.1	8.9	8	34.8%	17	73.9%
	20th	16	2.6	2.0	4	25.0%	6	37.5%
Northeast Region		86	28.9	31.8	36	41.9%	42	48.8%
<i>Southern</i>								
	3rd	2	2.0	1.9	2	100.0%	4	200.0%
	4th	41	27.8	30.8	32	78.0%	42	102.4%
	10th	15	5.6	4.3	8	53.3%	8	53.3%
	11th	4	0.7	0.8	1	25.0%	3	75.0%
	12th	2	1.0	0.5	1	50.0%	2	100.0%
	15th	2	0.4	0.6	1	50.0%	4	200.0%
	16th	2	0.8	0.6	1	50.0%	2	100.0%
Southern Region		68	38.2	39.5	16	23.5%	21	30.9%
<i>Western</i>								
	6th	2	0.8	1.2	1	50.0%	3	150.0%
	7th	5	1.9	1.7	3	60.0%	4	80.0%
	9th	4	0.0	0.6	0	0.0%	3	75.0%
	14th	2	1.0	0.1	1	50.0%	1	50.0%
	21st	13	6.3	6.0	11	84.6%	12	92.3%
	22nd	2	0.0	0.2	0	0.0%	2	100.0%
Western Region		28	10.0	9.9	14	50.0%	16	57.1%
<i>Missing JD or Multiple JDs</i>			0.4	0.7				
Statewide		327	146.3	148.9	130	39.8%	149	45.6%

¹ Maximum youth served is the highest number of youth in detention on a single day during the month or fiscal year.

² Regional figures are not the sum of judicial districts, but represent the maximum count on one day for the entire region.

³ State figures are not the sum of regional figures, but represent the maximum count on one day for the entire state.

March 2021 CYDC Supplemental Report

CYDC Community ADP by Judicial District

Region	JD	Committed		Diversion		ICJ		Municipal		Pre-Adjudicated		Sentenced		VCO		Total	
		March 2021	YTD	March 2021	YTD	March 2021	YTD	March 2021	YTD	March 2021	YTD	March 2021	YTD	March 2021	YTD	March 2021	YTD
<i>Central</i>																	
	1st	0.0	0.7	0.0	0.0	0.0	0.0	5.5	10.5	92.1	80.0	4.2	5.2	0.0	0.0	101.8	96.4
	2nd	4.8	1.8	0.0	0.4	2.0	0.7	0.0	0.0	110.4	103.2	40.6	36.6	0.0	0.0	157.8	142.7
	5th	0.0	0.0	7.0	7.3	0.0	0.0	0.0	0.0	9.0	7.1	38.0	39.8	0.0	0.0	54.0	54.2
	18th	0.0	0.0	1.0	1.3	0.2	0.2	1.0	1.0	240.9	245.7	44.7	33.6	0.0	0.0	287.8	281.7
Central Total		4.8	2.5	8.0	8.9	2.2	0.8	6.5	11.5	452.5	436.0	127.4	115.2	0.0	0.0	601.4	575.0
<i>Northeast</i>																	
	8th	0.0	0.0	6.2	3.9	0.0	0.0	0.0	0.0	64.9	50.8	26.0	24.6	0.0	0.0	97.2	79.3
	13th	0.0	0.0	0.0	0.0	0.0	0.0	25.0	21.8	11.2	10.9	2.0	2.0	1.0	1.7	39.2	36.4
	17th	0.0	0.0	2.3	0.6	0.0	0.0	0.0	0.0	150.0	127.6	15.1	13.9	0.0	0.0	167.3	142.2
	19th	0.0	2.0	0.0	0.3	0.0	0.0	2.0	0.3	42.0	51.7	18.9	17.9	3.7	0.5	66.6	72.7
	20th	0.0	0.0	46.0	47.0	0.0	0.0	0.0	0.2	59.6	51.5	8.0	6.5	0.0	0.0	113.5	105.2
Northeast Total		0.0	2.0	54.5	51.8	0.0	0.0	27.0	22.2	327.6	292.6	70.0	64.9	4.7	2.2	483.8	435.9
<i>Southern</i>																	
	3rd	0.0	0.0	0.0	0.0	0.0	0.0	0.0	0.0	10.9	8.2	2.0	1.6	1.0	0.3	13.9	10.1
	4th	2.0	0.8	0.0	0.0	0.0	0.0	18.7	21.7	197.3	160.3	41.1	35.8	0.0	0.0	259.1	218.5
	10th	1.0	0.3	0.0	0.0	0.0	0.0	0.0	0.0	21.0	16.5	6.8	4.4	1.9	0.2	30.7	21.4
	11th	0.0	0.0	0.0	0.0	0.0	0.0	21.0	17.8	28.4	26.4	9.0	8.1	0.0	0.0	58.4	52.3
	12th	0.0	0.0	3.0	2.0	0.0	0.0	1.0	2.0	6.6	8.0	0.0	0.8	0.0	0.0	10.5	12.8
	15th	0.0	0.0	1.0	1.0	0.0	0.0	0.0	0.0	6.9	6.7	11.0	10.3	0.0	0.0	18.9	18.0
	16th	0.0	0.0	0.0	0.0	0.0	0.0	0.0	0.0	6.0	6.4	1.0	1.0	37.3	32.5	44.3	39.9
Southern Total		3.0	1.1	4.0	3.0	0.0	0.0	40.7	41.5	277.0	232.5	70.9	62.0	40.2	33.0	435.8	373.0
<i>Western</i>																	
	6th	0.0	0.0	0.0	0.0	0.0	0.0	0.0	0.0	4.7	4.2	0.0	0.5	0.0	0.0	4.7	4.7
	7th	1.0	0.3	12.0	10.9	0.0	0.0	0.0	0.5	12.0	8.4	5.0	5.4	0.0	0.0	30.0	25.5
	9th	0.0	0.0	1.4	2.0	0.0	0.0	2.5	9.4	8.5	6.9	0.0	1.7	0.0	0.0	12.4	20.0
	14th	0.0	0.0	0.0	0.9	0.0	0.0	0.0	0.3	3.0	0.7	0.0	0.7	0.0	0.0	3.0	2.6
	21st	1.0	1.2	0.0	0.1	0.0	0.0	0.0	0.0	40.0	36.3	32.2	29.7	0.0	0.0	73.3	67.3
	22nd	0.0	0.0	1.0	0.8	0.0	0.0	0.0	0.0	7.4	8.4	10.7	7.6	0.0	0.0	19.1	16.8
Western Total		2.0	1.6	14.4	14.6	0.0	0.0	2.5	10.3	75.7	64.9	47.9	45.6	0.0	0.0	142.4	136.9
Statewide Total		9.8	7.2	80.9	78.4	2.2	0.9	76.6	85.5	1,132.7	1,025.9	316.3	287.7	44.9	35.2	1,663.4	1,520.7