

February 2021*

FY 2020-2021

CYDC JDSAG SUPPLEMENTAL REPORT

Prepared by the Division of Youth Services (DYS)

Data Management & Analysis

March 24, 2021

* Following the initial announcement of positive cases of COVID-19 in Colorado on March 5th, data presented in this report largely reflect COVID-19 response and Executive Order (EO) compliance across the detained, committed, and paroled populations. The statewide detention bed availability was temporarily reduced to 200 effective April 21, 2020 COB; DYS plans to return to official allocations (327) and bed borrowing practices upon expiration of the EO. Due to the temporary nature of the reduction, DYS continues to utilize official detention bed allocations within this report. Commitment population reductions and Parole population increases are a direct result of the Division's EO response, releasing an unprecedented number of youth from residential placement to parole.



COLORADO

Division of Youth Services

Office of Children, Youth & Families

February 2021 CYDC Supplemental Report

DYS Commitment ADP & New Commitments by Judicial District

Region	JD ¹	2021 Population Estimates ²	ADP ³		New Commitments		
			February 2021	YTD	February 2021	YTD	YTD Rate ⁴
<i>Central</i>							
	1st	54,247	29.2	35.4	2	6	1.1
	2nd	57,556	56.1	57.8	1	22	3.8
	5th	9,148	3.0	3.0	0	1	1.1
	18th	114,514	53.7	62.0	3	18	1.6
Central Total		235,465	142.0	158.2	6	47	2.0
<i>Northeast</i>							
	8th	35,120	15.9	16.6	1	10	2.8
	13th	8,520	3.0	2.6	0	2	2.3
	17th	69,653	29.0	32.0	3	10	1.4
	19th	39,126	29.2	28.7	3	23	5.9
	20th	30,663	8.0	5.5	0	3	1.0
Northeast Total		183,082	85.1	85.4	7	48	2.6
<i>Southern</i>							
	3rd	1,875	3.0	3.1	0	0	0.0
	4th	84,107	48.4	55.4	0	12	1.4
	10th	17,817	10.4	8.6	0	5	2.8
	11th	7,367	3.0	3.5	0	1	1.4
	12th	5,455	1.0	1.0	0	0	0.0
	15th	2,111	3.3	3.2	0	1	4.7
	16th	2,836	1.0	1.4	0	0	0.0
Southern Total		121,568	70.2	76.2	0	19	1.6
<i>Western</i>							
	6th	7,430	2.6	1.6	1	2	2.7
	7th	10,673	2.4	2.3	1	3	2.8
	9th	8,519	2.7	1.9	1	1	1.2
	14th	5,788	0.0	0.0	0	0	0.0
	21st	16,466	12.3	21.1	0	5	3.0
	22nd	3,034	4.0	4.2	0	0	0.0
Western Total		51,910	23.9	31.0	3	11	2.1
Statewide Total		592,025	321.1	350.9	16	125	2.1

¹ JD represents the judicial district in which the client was committed. Regional totals are a sum of their respective judicial districts. Regional totals reported here may differ slightly from those reported in the Monthly Population Report, where region is defined by active caseloads.

² Source: DOLA 2021 Estimates.

³ Due to rounding, totals shown may not be an exact sum of the subtotals.

⁴ Per 10,000 youth in the population.

February 2021 CYDC Supplemental Report

DYS Detention ADP and New Detention Admissions by Judicial District

Region	JD	2021 Population Estimates ¹	ADP		New Admits		
			February 2021	YTD	February 2021	YTD	YTD New Admit Rate ²
<i>Central</i>							
	1st	54,247	12.6	12.6	22	129	23.8
	2nd	57,556	28.2	29.1	16	220	38.2
	5th	9,148	0.3	0.3	2	8	8.7
	18th	114,514	24.6	24.7	27	220	19.2
Central Total		235,465	65.7	66.7	67	577	24.5
<i>Northeast</i>							
	8th	35,120	7.2	5.5	11	69	19.6
	13th	8,520	1.9	1.7	4	26	30.5
	17th	69,653	12.7	13.6	12	121	17.4
	19th	39,126	7.7	9.5	17	156	39.9
	20th	30,663	1.0	1.9	1	45	14.7
Northeast Total		183,082	30.5	32.2	45	417	22.8
<i>Southern</i>							
	3rd	1,875	2.2	1.9	2	7	37.3
	4th	84,107	25.4	31.2	30	296	35.2
	10th	17,817	3.5	4.2	3	52	29.2
	11th	7,367	0.3	0.8	3	17	23.1
	12th	5,455	1.0	0.4	0	4	7.3
	15th	2,111	1.3	0.7	2	9	42.6
	16th	2,836	1.0	0.6	0	5	17.6
Southern Total		121,568	34.6	39.7	40	390	32.1
<i>Western</i>							
	6th	7,430	1.3	1.3	0	10	13.5
	7th	10,673	3.1	1.7	3	19	17.8
	9th	8,519	0.3	0.7	0	11	12.9
	14th	5,788	0.0	0.0	0	1	1.7
	21st	16,466	6.0	6.0	16	123	74.7
	22nd	3,034	0.0	0.2	0	7	23.1
Western Total		51,910	10.8	9.9	19	171	32.9
<i>Missing JD or Multiple JDs</i>			<i>0.6</i>	<i>0.7</i>			
Statewide Total		592,025	142.2	149.2	171	1,555	26.3

¹ Source: DOLA 2021 Estimates.

² Per 10,000 youth in the population.

February 2021 CYDC Supplemental Report

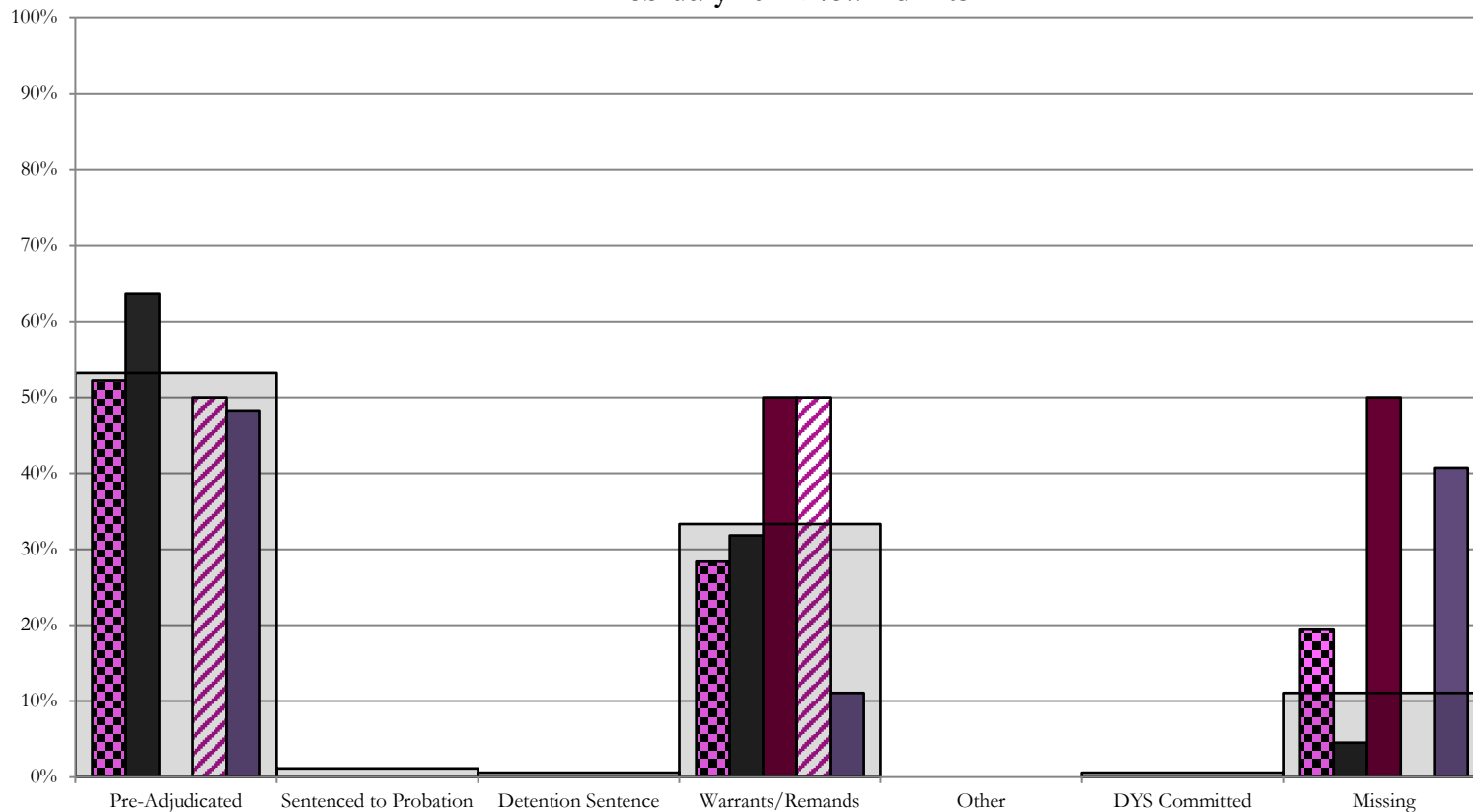
DYS Detention LOS by Judicial District				
Region	JD	YTD Detention Releases	YTD LOS (days)	LOS (days) Compared to State AVG
<i>Central</i>				
	1st	125	21.1	0.4
	2nd	211	20.1	-0.6
	5th	7	23.6	2.9
	18th	232	29.5	8.7
Central Total		575	24.1	3.4
<i>Northeast</i>				
	8th	62	15.0	-5.7
	13th	27	15.8	-4.9
	17th	125	13.2	-7.6
	19th	149	13.0	-7.8
	20th	47	11.6	-9.1
Northeast Total		410	13.4	-7.4
<i>Southern</i>				
	3rd	6	14.4	-6.3
	4th	310	21.0	0.2
	10th	51	13.6	-7.1
	11th	17	9.5	-11.3
	12th	4	84.0	63.3
	15th	8	15.9	-4.8
	16th	4	21.1	0.4
Southern Total		400	20.0	-0.7
<i>Western</i>				
	6th	8	27.0	6.3
	7th	16	15.3	-5.4
	9th	11	13.6	-7.1
	14th	1	3.0	-17.7
	21st	114	8.3	-12.4
	22nd	8	4.5	-16.2
Western Total		158	10.1	-10.6
Statewide Total		1,542	20.7	-

February 2021 CDYC Supplemental Report

CYDC Reason Detained (RD) by Judicial District

Region	JD	Monthly New Admits	Pre-Adjudicated				Sentenced to Probation				Detention Sentence				Warrants/Remands				Other						DYS Committed		Missing									
			Felony		Misdemeanor		Technical Violator		New Charges		Probation Sentence		Detention Sentence		Valid Court Order (VCO) Truancy		Awaiting DSS (Social Services) Placement		Failure to Appear (FTA)		Failure to Comply (FIC)		Interstate Compact on Juveniles (ICJ) Hold		Immigration Hold		No Bond Hold		Out-of-Country Warrant		Institutional		Parole		Missing	
			#	%	#	%	#	%	#	%	#	%	#	%	#	%	#	%	#	%	#	%	#	%	#	%	#	%	#	%	#	%	#	%		
Central																																				
	1st	22	7	31.8%	7	31.8%	0	0.0%	0	0.0%	0	0.0%	0	0.0%	0	0.0%	0	0.0%	5	22.7%	2	9.1%	0	0.0%	0	0.0%	0	0.0%	0	0.0%	0	0.0%	0	0.0%	1	4.5%
	2nd	16	6	37.5%	2	12.5%	0	0.0%	0	0.0%	0	0.0%	0	0.0%	0	0.0%	0	0.0%	3	18.8%	5	31.3%	0	0.0%	0	0.0%	0	0.0%	0	0.0%	0	0.0%	0	0.0%	0	0.0%
	5th	2	0	0.0%	0	0.0%	0	0.0%	0	0.0%	0	0.0%	0	0.0%	0	0.0%	0	0.0%	1	50.0%	0	0.0%	0	0.0%	0	0.0%	0	0.0%	0	0.0%	0	0.0%	0	0.0%	1	50.0%
	18th	27	6	22.2%	7	25.9%	0	0.0%	0	0.0%	0	0.0%	0	0.0%	0	0.0%	0	0.0%	1	3.7%	2	7.4%	0	0.0%	0	0.0%	0	0.0%	0	0.0%	0	0.0%	0	0.0%	11	40.7%
Central Total		67	19	28%	16	24%	0	0.0%	0	0.0%	0	0.0%	0	0.0%	0	0.0%	0	0.0%	10	15%	9	13%	0	0.0%	0	0.0%	0	0.0%	0	0.0%	0	0.0%	0	0.0%	13	19.4%
Northeast																																				
	8th	11	5	45.5%	1	9.1%	2	18.2%	0	0.0%	0	0.0%	0	0.0%	0	0.0%	0	0.0%	2	18.2%	1	9.1%	0	0.0%	0	0.0%	0	0.0%	0	0.0%	0	0.0%	0	0.0%	0	0.0%
	13th	4	3	75.0%	0	0.0%	0	0.0%	0	0.0%	0	0.0%	0	0.0%	0	0.0%	0	0.0%	0	0.0%	1	25.0%	0	0.0%	0	0.0%	0	0.0%	0	0.0%	0	0.0%	0	0.0%	0	0.0%
	17th	12	3	25.0%	4	33.3%	0	0.0%	0	0.0%	0	0.0%	0	0.0%	0	0.0%	0	0.0%	2	16.7%	3	25.0%	0	0.0%	0	0.0%	0	0.0%	0	0.0%	0	0.0%	0	0.0%	0	0.0%
	19th	17	4	23.5%	1	5.9%	0	0.0%	0	0.0%	0	0.0%	0	0.0%	0	0.0%	0	0.0%	1	5.9%	11	64.7%	0	0.0%	0	0.0%	0	0.0%	0	0.0%	0	0.0%	0	0.0%	0	0.0%
	20th	1	0	0.0%	0	0.0%	0	0.0%	0	0.0%	0	0.0%	0	0.0%	0	0.0%	0	0.0%	1	100.0%	0	0.0%	0	0.0%	0	0.0%	0	0.0%	0	0.0%	0	0.0%	0	0.0%	0	0.0%
Northeast Total		45	15	33%	6	13%	2	4.4%	0	0.0%	0	0.0%	0	0.0%	0	0.0%	0	0.0%	6	13.3%	16	36%	0	0.0%	0	0.0%	0	0.0%	0	0.0%	0	0.0%	0	0.0%	0	0%
Southern																																				
	3rd	2	1	50.0%	1	50.0%	0	0.0%	0	0.0%	0	0.0%	0	0.0%	0	0.0%	0	0.0%	0	0.0%	0	0.0%	0	0.0%	0	0.0%	0	0.0%	0	0.0%	0	0.0%	0	0.0%		
	4th	30	17	56.7%	3	10.0%	0	0.0%	0	0.0%	0	0.0%	0	0.0%	0	0.0%	0	0.0%	3	10.0%	3	10.0%	0	0.0%	0	0.0%	0	0.0%	1	3.3%	0	0.0%	3	10.0%		
	10th	3	2	66.7%	0	0.0%	0	0.0%	0	0.0%	0	0.0%	0	0.0%	0	0.0%	0	0.0%	0	0.0%	1	33.3%	0	0.0%	0	0.0%	0	0.0%	0	0.0%	0	0.0%	0	0.0%		
	11th	3	0	0.0%	0	0.0%	0	0.0%	0	0.0%	0	0.0%	1	33.3%	0	0.0%	0	0.0%	0	0.0%	0	0.0%	0	0.0%	0	0.0%	0	0.0%	0	0.0%	0	0.0%	2	66.7%		
	12th	0	0	0.0%	0	0.0%	0	0.0%	0	0.0%	0	0.0%	0	0.0%	0	0.0%	0	0.0%	0	0.0%	0	0.0%	0	0.0%	0	0.0%	0	0.0%	0	0.0%	0	0.0%	0	0.0%		
	15th	2	1	50.0%	0	0.0%	0	0.0%	0	0.0%	0	0.0%	0	0.0%	0	0.0%	0	0.0%	0	0.0%	0	0.0%	0	0.0%	0	0.0%	0	0.0%	0	0.0%	0	0.0%	1	50.0%		
	16th	0	0	0.0%	0	0.0%	0	0.0%	0	0.0%	0	0.0%	0	0.0%	0	0.0%	0	0.0%	0	0.0%	0	0.0%	0	0.0%	0	0.0%	0	0.0%	0	0.0%	0	0.0%	0	0.0%		
Southern Total		40	21	53%	4	10%	0	0.0%	0	0.0%	0	0.0%	1	2.5%	0	0.0%	0	0.0%	3	8%	4	10%	0	0.0%	0	0.0%	0	0.0%	0	0.0%	1	2.5%	0	0.0%	6	15%
Western																																				
	6th	0	0	0.0%	0	0.0%	0	0.0%	0	0.0%	0	0.0%	0	0.0%	0	0.0%	0	0.0%	0	0.0%	0	0.0%	0	0.0%	0	0.0%	0	0.0%	0	0.0%	0	0.0%	0	0.0%		
	7th	3	2	66.7%	1	33.3%	0	0.0%	0	0.0%	0	0.0%	0	0.0%	0	0.0%	0	0.0%	0	0.0%	0	0.0%	0	0.0%	0	0.0%	0	0.0%	0	0.0%	0	0.0%	0	0.0%		
	9th	0	0	0.0%	0	0.0%	0	0.0%	0	0.0%	0	0.0%	0	0.0%	0	0.0%	0	0.0%	0	0.0%	0	0.0%	0	0.0%	0	0.0%	0	0.0%	0	0.0%	0	0.0%	0	0.0%		
	14th	0	0	0.0%	0	0.0%	0	0.0%	0	0.0%	0	0.0%	0	0.0%	0	0.0%	0	0.0%	0	0.0%	0	0.0%	0	0.0%	0	0.0%	0	0.0%	0	0.0%	0	0.0%	0	0.0%		
	21st	16	5	31.3%	2	12.5%	0	0.0%	0	0.0%	0	0.0%	0	0.0%	0	0.0%	0	0.0%	0	0.0%	9	56.3%	0	0.0%	0	0.0%	0	0.0%	0	0.0%	0	0.0%	0	0.0%		
	22nd	0	0	0.0%	0	0.0%	0	0.0%	0	0.0%	0	0.0%	0	0.0%	0	0.0%	0	0.0%	0	0.0%	0	0.0%	0	0.0%	0	0.0%	0	0.0%	0	0.0%	0	0.0%	0	0.0%		
Western Total		19	7	37%	3	15.8%	0	0.0%	0	0.0%	0	0.0%	0	0.0%	0	0.0%	0	0.0%	0	0.0%	9	47%	0	0.0%	0	0.0%	0	0.0%	0	0.0%	0	0.0%	0	0%		
Individual RD Totals		171	62	36%	29	17%	2	1.2%	0	0.0%	0	0.0%	1	0.6%	0	0.0%	0	0.0%	19	11%	38	22%	0	0.0%	0	0.0%	0	0.0%	0	0.0%	1	0.6%	0	0.0%	19	11%
Statewide Totals		171	91	53.2%	2	1.2%	1	0.6%	0	0.0%	0	0.0%	0	0.0%	0	0.0%	0	0.0%	57	33.3%	0	0.0%	0	0.0%	0	0.0%	1	0.6%	0	0.0%	19	11%				

Central Region CYDC Reason Detained by Judicial District February 2021 New Admits



■ CENTRAL REGION, 67 New Admits

■ 1st JD, 22 New Admits

■ 5th JD, 2 New Admits

■ 2nd JD, 16 New Admits

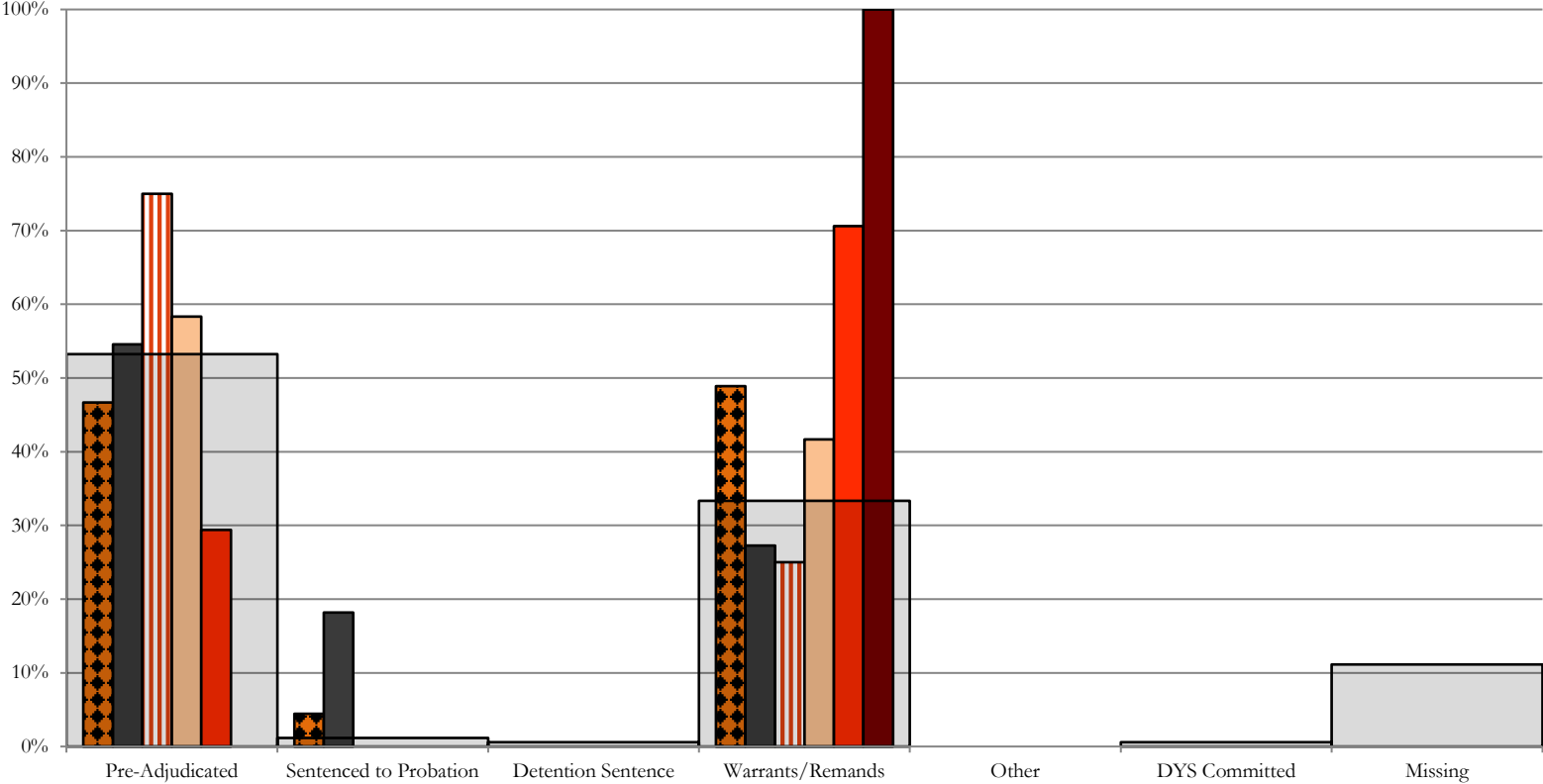
■ 18th JD, 27 New Admits

■ STATEWIDE, 171 New Admits

Northeast Region

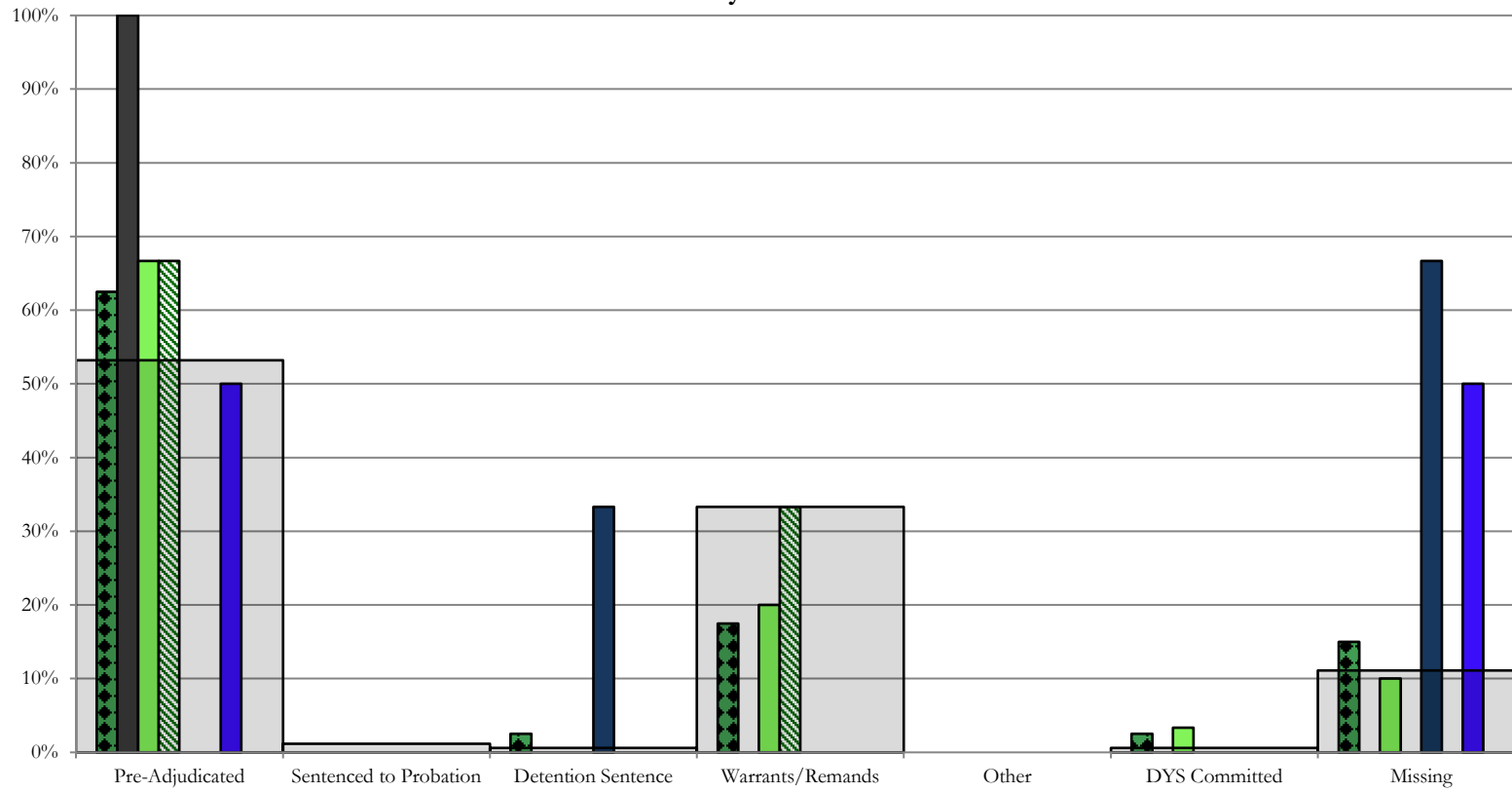
CYDC Reason Detained by Judicial District

February 2021 New Admits



- NORTHEAST REGION, 45 New Admits
- 8th JD, 11 New Admits
- 13th JD, 4 New Admits
- 17th JD, 12 New Admits
- 19th JD, 17 New Admits
- 20th JD, 1 New Admits
- STATEWIDE, 171 New Admits

Southern Region CYDC Reason Detained by Judicial District February 2021 New Admits



■ SOUTHERN REGION, 40 New Admits

■ 4th JD, 30 New Admits

■ 11th JD, 3 New Admits

■ 15th JD, 2 New Admits

■ STATEWIDE, 171 New Admits

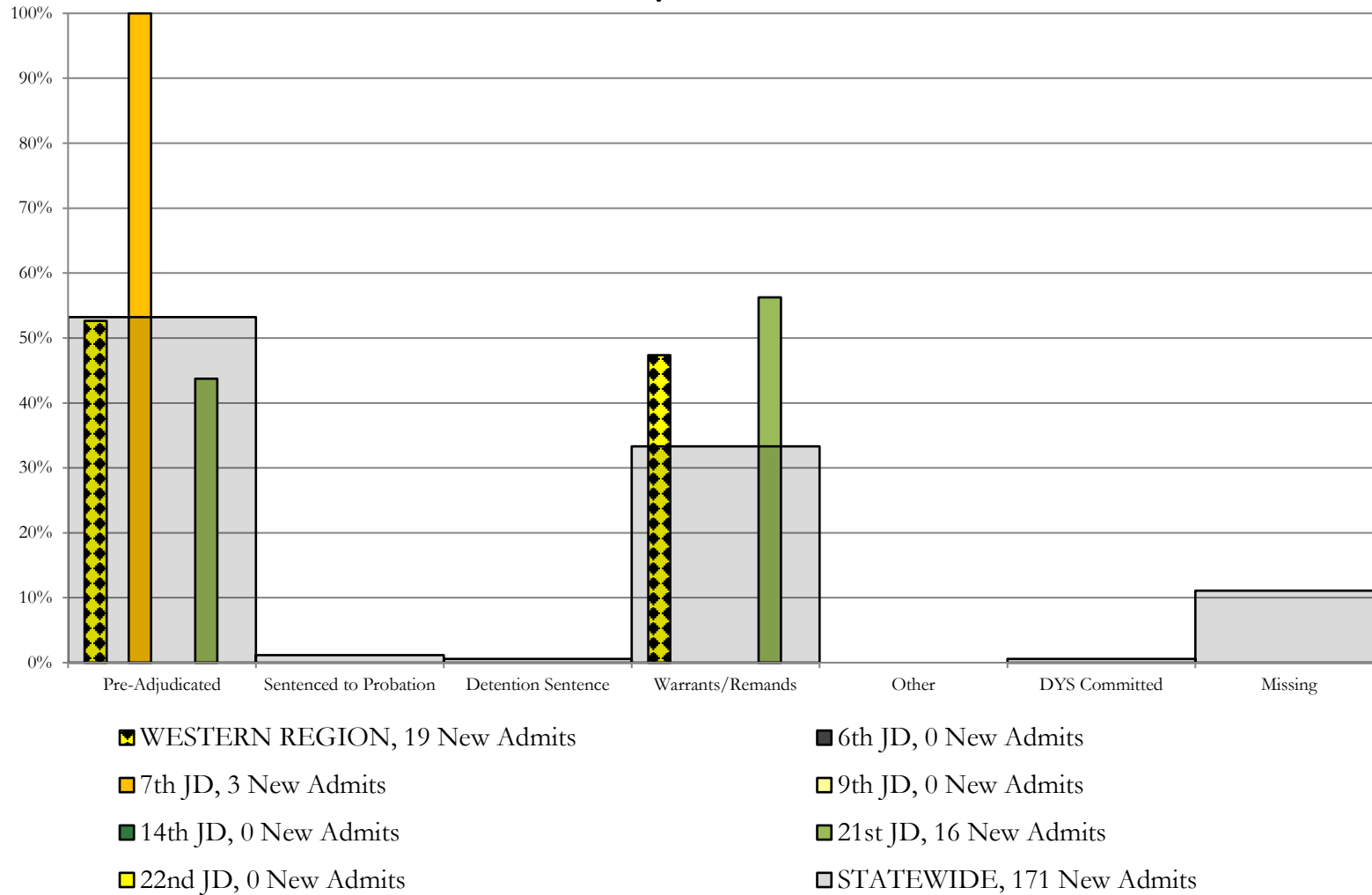
■ 3rd JD, 2 New Admits

■ 10th JD, 3 New Admits

■ 12th JD, 0 New Admits

■ 16th JD, 0 New Admits

Western Region CYDC Reason Detained by Judicial District February 2021 New Admits



February 2021 CYDC Supplemental Report

DYS Detention Maximum Youth Served by Judicial District¹

Region	JD	Detention Capacity	Detention ADP		Maximum Youth Served on a Single Day ^{2,3}			
			February 2021	YTD	February 2021		YTD	
					Number of Youth	% of Detention Capacity	Number of Youth	% of Detention Capacity
<i>Central</i>								
	1st	34	12.6	12.6	17	50.0%	19	55.9%
	2nd	53	28.2	29.1	36	67.9%	39	73.6%
	5th	2	0.3	0.3	1	50.0%	2	100.0%
	18th	56	24.6	24.7	30	53.6%	43	76.8%
Central Region		145	65.7	66.7	74	51.0%	84	57.9%
<i>Northeast</i>								
	8th	17	7.2	5.5	9	52.9%	10	58.8%
	13th	4	1.9	1.7	4	100.0%	6	150.0%
	17th	26	12.7	13.6	15	57.7%	19	73.1%
	19th	23	7.7	9.5	15	65.2%	17	73.9%
	20th	16	1.0	1.9	2	12.5%	6	37.5%
Northeast Region		86	30.5	32.2	39	45.3%	42	48.8%
<i>Southern</i>								
	3rd	2	2.2	1.9	3	150.0%	4	200.0%
	4th	41	25.4	31.2	30	73.2%	42	102.4%
	10th	15	3.5	4.2	5	33.3%	8	53.3%
	11th	4	0.27	0.8	1	25.0%	3	75.0%
	12th	2	1.0	0.4	1	50.0%	2	100.0%
	15th	2	1.3	0.7	4	200.0%	4	200.0%
	16th	2	1.0	0.6	1	50.0%	2	100.0%
Southern Region		68	34.6	39.7	16	23.5%	21	30.9%
<i>Western</i>								
	6th	2	1.3	1.3	2	100.0%	3	150.0%
	7th	5	3.1	1.7	4	80.0%	4	80.0%
	9th	4	0.3	0.7	1	25.0%	3	75.0%
	14th	2	0.0	0.0	0	0.0%	1	50.0%
	21st	13	6.0	6.0	11	84.6%	12	92.3%
	22nd	2	0.0	0.2	0	0.0%	2	100.0%
Western Region		28	10.8	9.9	15	53.6%	16	57.1%
<i>Missing JD or Multiple JDs</i>			0.6	0.7				
Statewide		327	142.2	149.2	135	41.3%	149	45.6%

¹ Maximum youth served is the highest number of youth in detention on a single day during the month or fiscal year.

² Regional figures are not the sum of judicial districts, but represent the maximum count on one day for the entire region.

³ State figures are not the sum of regional figures, but represent the maximum count on one day for the entire state.

February 2021 CYDC Supplemental Report

CYDC Community ADP by Judicial District

Region	JD	Committed		Diversion		ICJ		Municipal		Pre-Adjudicated		Sentenced		VCO		Total	
		February 2021	YTD	February 2021	YTD	February 2021	YTD	February 2021	YTD	February 2021	YTD	February 2021	YTD	February 2021	YTD	February 2021	YTD
<i>Central</i>																	
	1st	0.0	0.8	0.0	0.0	0.0	0.0	6.0	12.1	92.7	78.5	1.8	5.3	0.0	0.0	100.5	96.7
	2nd	4.0	1.4	0.0	0.4	2.0	0.5	0.0	0.0	91.5	102.4	37.8	36.1	0.0	0.0	135.4	140.8
	5th	0.0	0.0	8.0	7.5	0.0	0.0	0.0	0.0	9.0	6.9	38.0	40.0	0.0	0.0	55.0	54.4
	18th	0.0	0.0	1.0	1.3	0.0	0.1	1.0	1.0	250.6	246.3	51.1	33.3	0.0	0.0	303.7	282.1
Central Total		4.0	2.2	9.0	9.2	2.0	0.7	7.0	13.1	443.8	434.1	128.7	114.6	0.0	0.0	594.5	573.9
<i>Northeast</i>																	
	8th	0.0	0.0	7.0	3.5	0.0	0.0	0.0	0.0	58.5	49.1	27.0	24.4	0.0	0.0	92.5	77.0
	13th	0.0	0.0	0.0	0.0	0.0	0.0	25.0	21.4	13.9	11.0	2.0	2.0	1.8	1.8	42.7	36.1
	17th	0.0	0.0	1.7	0.4	0.0	0.0	0.0	0.0	139.1	125.0	15.3	13.8	0.0	0.0	156.1	139.2
	19th	0.8	2.3	0.0	0.4	0.3	0.0	0.3	0.0	46.3	53.3	18.8	17.7	1.2	0.1	67.6	73.8
	20th	0.0	0.0	45.4	47.1	0.0	0.0	0.0	0.2	60.1	49.5	7.0	5.4	0.0	0.0	112.5	102.2
Northeast Total		0.8	2.3	54.1	51.4	0.3	0.0	25.3	21.6	317.9	287.8	70.0	63.2	3.0	1.9	471.4	428.4
<i>Southern</i>																	
	3rd	0.0	0.0	0.0	0.0	0.0	0.0	0.0	0.0	9.1	7.9	2.0	1.5	1.0	0.2	12.1	9.6
	4th	2.2	0.7	0.0	0.0	0.0	0.0	18.0	22.0	189.1	155.2	37.1	35.1	0.0	0.0	246.5	213.1
	10th	0.5	0.2	0.0	0.0	0.0	0.0	0.0	0.0	16.6	15.9	3.8	4.1	0.0	0.0	20.9	20.2
	11th	0.0	0.0	0.0	0.0	0.0	0.0	20.0	17.4	27.2	26.1	9.0	8.0	0.0	0.0	56.2	51.6
	12th	0.0	0.0	1.1	1.9	0.0	0.0	1.0	2.2	6.8	8.2	0.0	0.9	0.0	0.0	8.9	13.1
	15th	0.0	0.0	1.0	1.0	0.0	0.0	0.0	0.0	7.9	6.7	11.0	10.2	0.0	0.0	19.9	17.9
	16th	0.0	0.0	0.0	0.0	0.0	0.0	0.0	0.0	8.0	8.0	1.0	1.0	38.4	31.9	47.4	40.9
Southern Total		2.8	0.9	2.1	2.9	0.0	0.0	39.0	41.6	264.7	228.0	63.9	60.9	39.4	32.1	411.9	366.3
<i>Western</i>																	
	6th	0.0	0.0	0.0	0.0	0.0	0.0	0.0	0.0	4.4	4.1	0.0	0.6	0.0	0.0	4.4	4.7
	7th	1.0	0.3	12.0	10.7	0.0	0.0	0.0	0.5	9.0	7.9	5.1	5.5	0.0	0.0	27.1	24.9
	9th	0.0	0.0	0.2	2.1	0.0	0.0	2.0	9.3	10.6	6.7	0.3	2.0	0.0	0.0	13.1	20.0
	14th	0.0	0.0	0.0	1.0	0.0	0.0	0.0	0.4	0.4	0.4	0.0	0.8	0.0	0.0	0.4	2.6
	21st	1.0	1.2	0.0	0.1	0.0	0.0	0.0	0.0	37.9	36.4	32.6	29.3	0.0	0.0	71.6	67.1
	22nd	0.0	0.0	0.0	0.0	0.0	0.0	0.0	0.0	8.0	8.5	5.6	5.1	0.0	0.0	13.6	13.6
Western Total		2.0	1.5	12.2	13.9	0.0	0.0	2.0	10.2	70.2	64.1	43.7	43.1	0.0	0.0	130.1	132.9
Statewide Total		9.6	6.9	77.4	77.5	2.3	0.7	73.3	86.5	1,096.7	1,014.0	306.3	281.9	42.4	34.0	1,608.0	1,501.5