

January 2021*

FY 2020-2021

CYDC JDSAG SUPPLEMENTAL REPORT

Prepared by the Division of Youth Services (DYS)

Data Management & Analysis

March 1, 2021

* Following the initial announcement of positive cases of COVID-19 in Colorado on March 5th, data presented in this report largely reflect COVID-19 response and Executive Order (EO) compliance across the detained, committed, and paroled populations. The statewide detention bed availability was temporarily reduced to 200 effective April 21, 2020 COB; DYS plans to return to official allocations (327) and bed borrowing practices upon expiration of the EO. Due to the temporary nature of the reduction, DYS continues to utilize official detention bed allocations within this report. Commitment population reductions and Parole population increases are a direct result of the Division's EO response, releasing an unprecedented number of youth from residential placement to parole.



COLORADO

Division of Youth Services

Office of Children, Youth & Families

January 2021 CYDC Supplemental Report

DYS Commitment ADP & New Commitments by Judicial District

Region	JD ¹	2021 Population Estimates ²	ADP ³		New Commitments		
			January 2021	YTD	January 2021	YTD	YTD Rate ⁴
<i>Central</i>							
	1st	54,247	29.2	36.2	0	4	0.7
	2nd	57,556	52.5	58.0	6	20	3.5
	5th	9,148	3.7	3.0	0	1	1.1
	18th	114,514	51.7	63.1	1	15	1.3
Central Total		235,465	137.1	160.3	7	40	1.7
<i>Northeast</i>							
	8th	35,120	15.5	16.7	0	9	2.6
	13th	8,520	3.0	2.6	0	2	2.3
	17th	69,653	29.7	32.4	1	7	1.0
	19th	39,126	28.2	28.6	2	20	5.1
	20th	30,663	7.2	5.1	0	3	1.0
Northeast Total		183,082	83.5	85.5	3	41	2.2
<i>Southern</i>							
	3rd	1,875	3.0	3.1	0	0	0.0
	4th	84,107	50.6	56.3	1	12	1.4
	10th	17,817	9.9	8.4	2	5	2.8
	11th	7,367	3.0	3.6	0	1	1.4
	12th	5,455	1.0	1.0	0	0	0.0
	15th	2,111	3.0	3.2	0	1	4.7
	16th	2,836	1.0	1.4	0	0	0.0
Southern Total		121,568	71.5	77.0	3	19	1.6
<i>Western</i>							
	6th	7,430	2.0	1.4	0	1	1.3
	7th	10,673	2.7	2.3	0	2	1.9
	9th	8,519	1.7	1.8	0	0	0.0
	14th	5,788	0.0	0.0	0	0	0.0
	21st	16,466	15.6	22.3	0	5	3.0
	22nd	3,034	4.0	4.2	0	0	0.0
Western Total		51,910	25.9	32.0	0	8	1.5
Statewide Total		592,025	318.0	354.8	13	108	1.8

¹ JD represents the judicial district in which the client was committed. Regional totals are a sum of their respective judicial districts. Regional totals reported here may differ slightly from those reported in the Monthly Population Report, where region is defined by active caseloads.

² Source: DOLA 2021 Estimates.

³ Due to rounding, totals shown may not be an exact sum of the subtotals.

⁴ Per 10,000 youth in the population.

January 2021 CYDC Supplemental Report

DYS Detention ADP and New Detention Admissions by Judicial District

Region	JD	2021 Population Estimates ¹	ADP		New Admits		YTD New Admit Rate ²
			January 2021	YTD	January 2021	YTD	
<i>Central</i>							
	1st	54,247	12.9	12.6	16	107	19.7
	2nd	57,556	29.4	29.2	27	204	35.4
	5th	9,148	0.0	0.3	0	6	6.6
	18th	114,514	24.3	24.8	26	193	16.9
Central Total		235,465	66.6	66.8	69	510	21.7
<i>Northeast</i>							
	8th	35,120	6.1	5.3	9	58	16.5
	13th	8,520	1.9	1.6	6	22	25.8
	17th	69,653	13.0	13.8	15	109	15.6
	19th	39,126	10.5	9.7	17	139	35.5
	20th	30,663	1.7	2.0	5	44	14.3
Northeast Total		183,082	33.2	32.4	52	372	20.3
<i>Southern</i>							
	3rd	1,875	2.5	1.8	1	5	26.7
	4th	84,107	24.9	31.9	46	266	31.6
	10th	17,817	4.3	4.3	4	49	27.5
	11th	7,367	0.0	0.9	1	14	19.0
	12th	5,455	1.0	0.4	0	4	7.3
	15th	2,111	1.3	0.6	3	7	33.2
	16th	2,836	1.0	0.6	0	5	17.6
Southern Total		121,568	35.1	40.4	55	350	28.8
<i>Western</i>							
	6th	7,430	0.3	1.3	2	10	13.5
	7th	10,673	2.6	1.5	3	16	15.0
	9th	8,519	1.6	0.7	3	11	12.9
	14th	5,788	0.0	0.0	0	1	1.7
	21st	16,466	6.4	6.0	12	107	65.0
	22nd	3,034	0.2	0.2	2	7	23.1
Western Total		51,910	11.2	9.8	22	152	29.3
<i>Missing JD or Multiple JDs</i>			<i>0.6</i>	<i>0.7</i>			
Statewide Total		592,025	146.6	150.1	198	1,384	23.4

¹ Source: DOLA 2021 Estimates.

² Per 10,000 youth in the population.

January 2021 CYDC Supplemental Report

DYS Detention LOS by Judicial District				
Region	JD	YTD Detention Releases	YTD LOS (days)	LOS (days) Compared to State AVG
<i>Central</i>				
	1st	102	20.4	0.0
	2nd	201	20.4	0.0
	5th	6	27.4	6.9
	18th	205	27.0	6.6
Central Total		514	23.1	2.7
<i>Northeast</i>				
	8th	50	14.8	-5.7
	13th	21	17.1	-3.4
	17th	110	14.3	-6.1
	19th	133	13.0	-7.4
	20th	44	11.6	-8.8
Northeast Total		358	13.7	-6.7
<i>Southern</i>				
	3rd	3	12.1	-8.4
	4th	277	20.7	0.2
	10th	46	14.6	-5.8
	11th	15	10.7	-9.8
	12th	4	84.1	63.6
	15th	5	16.7	-3.8
	16th	4	21.1	0.7
Southern Total		354	20.1	-0.4
<i>Western</i>				
	6th	7	11.5	-9.0
	7th	12	7.4	-13.1
	9th	11	13.6	-6.8
	14th	1	3.0	-17.4
	21st	100	8.4	-12.0
	22nd	8	4.5	-15.9
Western Total		139	8.6	-11.8
Statewide Total		1,364	20.4	-

January 2021 CDYC Supplemental Report

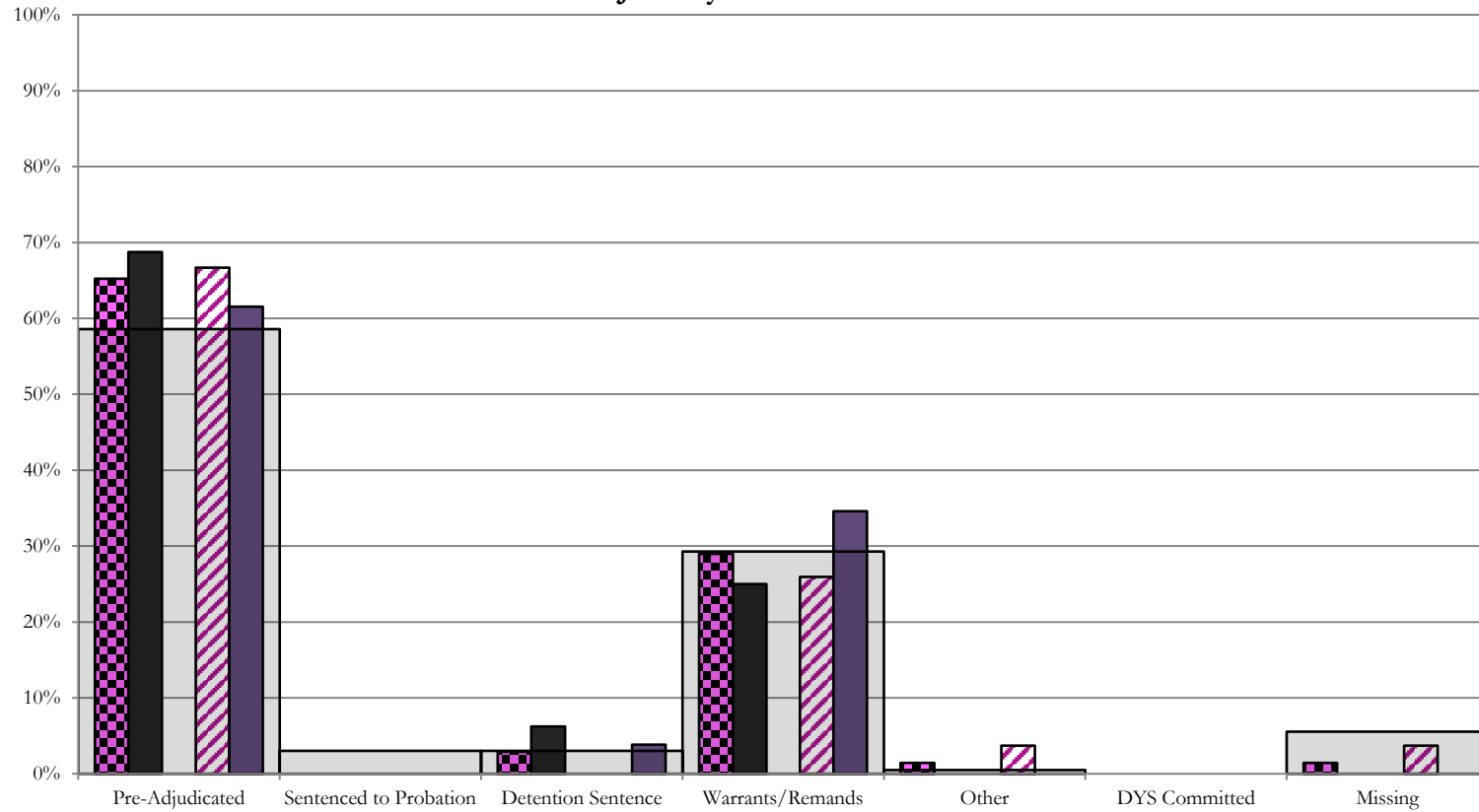
CYDC Reason Detained (RD) by Judicial District

Region	JD	Monthly New Admits	Pre-Adjudicated				Sentenced to Probation				Detention Sentence								Warrants/Remands				Other								DYS Committed				Missing	
			Felony		Misdemeanor		Technical Violator		New Charges		Probation Sentence		Detention Sentence		Valid Court Order (VCO) / Truancy		Awaiting DSS (Social Services) Placement		Failure to Appear (FTA)		Failure to Comply (FTC)		Interstate Compact on Juveniles (ICJ) Hold		Immigration Hold		No Bond Hold		Out-of-Country Warrant		Institutional		Parole		Missing	
			#	%	#	%	#	%	#	%	#	%	#	%	#	%	#	%	#	%	#	%	#	%	#	%	#	%	#	%	#	%	#	%		
Central																																				
	1st	16	8	50.0%	3	18.8%	0	0.0%	0	0.0%	0	0.0%	1	6.3%	0	0.0%	0	0.0%	1	6.3%	3	18.8%	0	0.0%	0	0.0%	0	0.0%	0	0.0%	0	0.0%	0	0.0%	0	0.0%
	2nd	27	14	51.9%	4	14.8%	0	0.0%	0	0.0%	0	0.0%	0	0.0%	0	0.0%	0	0.0%	1	3.7%	6	22.2%	1	3.7%	0	0.0%	0	0.0%	0	0.0%	0	0.0%	0	0.0%	1	3.7%
	5th	0	0	0.0%	0	0.0%	0	0.0%	0	0.0%	0	0.0%	0	0.0%	0	0.0%	0	0.0%	0	0.0%	0	0.0%	0	0.0%	0	0.0%	0	0.0%	0	0.0%	0	0.0%	0	0.0%	0	0.0%
	18th	26	13	50.0%	3	11.5%	0	0.0%	0	0.0%	0	0.0%	1	3.8%	0	0.0%	0	0.0%	5	19.2%	4	15.4%	0	0.0%	0	0.0%	0	0.0%	0	0.0%	0	0.0%	0	0.0%	0	0.0%
Central Total		69	35	51%	10	14%	0	0.0%	0	0.0%	0	0.0%	2	2.9%	0	0.0%	0	0.0%	7	10%	13	19%	1	1.4%	0	0.0%	0	0.0%	0	0.0%	0	0.0%	0	0.0%	1	1.4%
Northeast																																				
	8th	9	2	22.2%	0	0.0%	1	11.1%	0	0.0%	0	0.0%	2	22.2%	0	0.0%	0	0.0%	1	11.1%	3	33.3%	0	0.0%	0	0.0%	0	0.0%	0	0.0%	0	0.0%	0	0.0%	0	0.0%
	13th	6	3	50.0%	1	16.7%	0	0.0%	0	0.0%	0	0.0%	0	0.0%	0	0.0%	0	0.0%	0	0.0%	1	16.7%	0	0.0%	0	0.0%	0	0.0%	0	0.0%	0	0.0%	0	0.0%	1	16.7%
	17th	15	8	53.3%	4	26.7%	0	0.0%	0	0.0%	0	0.0%	0	0.0%	0	0.0%	0	0.0%	1	6.7%	2	13.3%	0	0.0%	0	0.0%	0	0.0%	0	0.0%	0	0.0%	0	0.0%	0	0.0%
	19th	17	4	23.5%	4	23.5%	0	0.0%	0	0.0%	0	0.0%	0	0.0%	0	0.0%	0	0.0%	1	5.9%	4	23.5%	0	0.0%	0	0.0%	0	0.0%	0	0.0%	0	0.0%	0	0.0%	0	0.0%
	20th	5	1	20.0%	0	0.0%	1	20.0%	0	0.0%	0	0.0%	0	0.0%	0	0.0%	0	0.0%	1	20.0%	1	20.0%	0	0.0%	0	0.0%	0	0.0%	0	0.0%	0	0.0%	0	0.0%	1	20.0%
Northeast Total		52	18	35%	9	17%	6	11.5%	0	0.0%	0	0.0%	2	3.8%	0	0.0%	0	0.0%	4	7.7%	11	21%	0	0.0%	0	0.0%	0	0.0%	0	0.0%	0	0.0%	0	0.0%	2	4%
Southern																																				
	3rd	1	1	100.0%	0	0.0%	0	0.0%	0	0.0%	0	0.0%	0	0.0%	0	0.0%	0	0.0%	0	0.0%	0	0.0%	0	0.0%	0	0.0%	0	0.0%	0	0.0%	0	0.0%	0	0.0%	0	0.0%
	4th	46	24	52.2%	3	6.5%	0	0.0%	0	0.0%	0	0.0%	0	0.0%	0	0.0%	0	0.0%	2	4.3%	11	23.9%	0	0.0%	0	0.0%	0	0.0%	0	0.0%	0	0.0%	0	0.0%	6	13.0%
	10th	4	1	25.0%	1	25.0%	0	0.0%	0	0.0%	0	0.0%	1	25.0%	0	0.0%	0	0.0%	0	0.0%	1	25.0%	0	0.0%	0	0.0%	0	0.0%	0	0.0%	0	0.0%	0	0.0%	0	0.0%
	11th	1	0	0.0%	0	0.0%	0	0.0%	0	0.0%	0	0.0%	1	100.0%	0	0.0%	0	0.0%	0	0.0%	0	0.0%	0	0.0%	0	0.0%	0	0.0%	0	0.0%	0	0.0%	0	0.0%	0	0.0%
	12th	0	0	0.0%	0	0.0%	0	0.0%	0	0.0%	0	0.0%	0	0.0%	0	0.0%	0	0.0%	0	0.0%	0	0.0%	0	0.0%	0	0.0%	0	0.0%	0	0.0%	0	0.0%	0	0.0%	0	0.0%
	15th	3	3	100.0%	0	0.0%	0	0.0%	0	0.0%	0	0.0%	0	0.0%	0	0.0%	0	0.0%	0	0.0%	0	0.0%	0	0.0%	0	0.0%	0	0.0%	0	0.0%	0	0.0%	0	0.0%	0	0.0%
	16th	0	0	0.0%	0	0.0%	0	0.0%	0	0.0%	0	0.0%	0	0.0%	0	0.0%	0	0.0%	0	0.0%	0	0.0%	0	0.0%	0	0.0%	0	0.0%	0	0.0%	0	0.0%	0	0.0%	0	0.0%
Southern Total		55	29	53%	4	7%	0	0.0%	0	0.0%	0	0.0%	2	3.6%	0	0.0%	0	0.0%	2	4%	12	22%	0	0.0%	0	0.0%	0	0.0%	0	0.0%	0	0.0%	0	0.0%	6	11%
Western																																				
	6th	2	1	50.0%	0	0.0%	0	0.0%	0	0.0%	0	0.0%	0	0.0%	0	0.0%	0	0.0%	0	0.0%	1	50.0%	0	0.0%	0	0.0%	0	0.0%	0	0.0%	0	0.0%	0	0.0%	0	0%
	7th	3	3	100.0%	0	0.0%	0	0.0%	0	0.0%	0	0.0%	0	0.0%	0	0.0%	0	0.0%	0	0.0%	0	0.0%	0	0.0%	0	0.0%	0	0.0%	0	0.0%	0	0.0%	0	0.0%	0	0%
	9th	3	1	33.3%	0	0.0%	0	0.0%	0	0.0%	0	0.0%	0	0.0%	0	0.0%	0	0.0%	0	0.0%	2	66.7%	0	0.0%	0	0.0%	0	0.0%	0	0.0%	0	0.0%	0	0.0%	0	0%
	14th	0	0	0.0%	0	0.0%	0	0.0%	0	0.0%	0	0.0%	0	0.0%	0	0.0%	0	0.0%	0	0.0%	0	0.0%	0	0.0%	0	0.0%	0	0.0%	0	0.0%	0	0.0%	0	0.0%	0	0%
	21st	12	4	33.3%	0	0.0%	0	0.0%	0	0.0%	0	0.0%	0	0.0%	0	0.0%	0	0.0%	2	16.7%	4	33.3%	0	0.0%	0	0.0%	0	0.0%	0	0.0%	0	0.0%	0	0.0%	2	17%
	22nd	2	1	50.0%	1	50.0%	0	0.0%	0	0.0%	0	0.0%	0	0.0%	0	0.0%	0	0.0%	0	0.0%	0	0.0%	0	0.0%	0	0.0%	0	0.0%	0	0.0%	0	0.0%	0	0.0%	0	0%
Western Total		22	10	45%	1	4.5%	0	0.0%	0	0.0%	0	0.0%	0	0.0%	0	0.0%	0	0.0%	2	9.1%	7	32%	0	0.0%	0	0.0%	0	0.0%	0	0.0%	0	0.0%	0	0.0%	2	9%
Individual RD Totals		198	92	46%	24	12%	6	3.0%	0	0.0%	0	0.0%	6	3.0%	0	0.0%	0	0.0%	15	8%	43	22%	1	0.5%	0	0.0%	0	0.0%	0	0.0%	0	0.0%	0	0.0%	11	6%
Statewide Totals																																				
Statewide Totals		198	116	58.6%	6	3.0%	6	3.0%	0	0.0%	0	0.0%	6	3.0%	0	0.0%	0	0.0%	58	29.3%	1	0.5%	0	0.0%	0	0.0%	0	0.0%	0	0.0%	0	0.0%	11	6%		

Central Region

CYDC Reason Detained by Judicial District

January 2021 New Admits



■ CENTRAL REGION, 69 New Admits

■ 5th JD, 0 New Admits

■ 18th JD, 26 New Admits

■ 1st JD, 16 New Admits

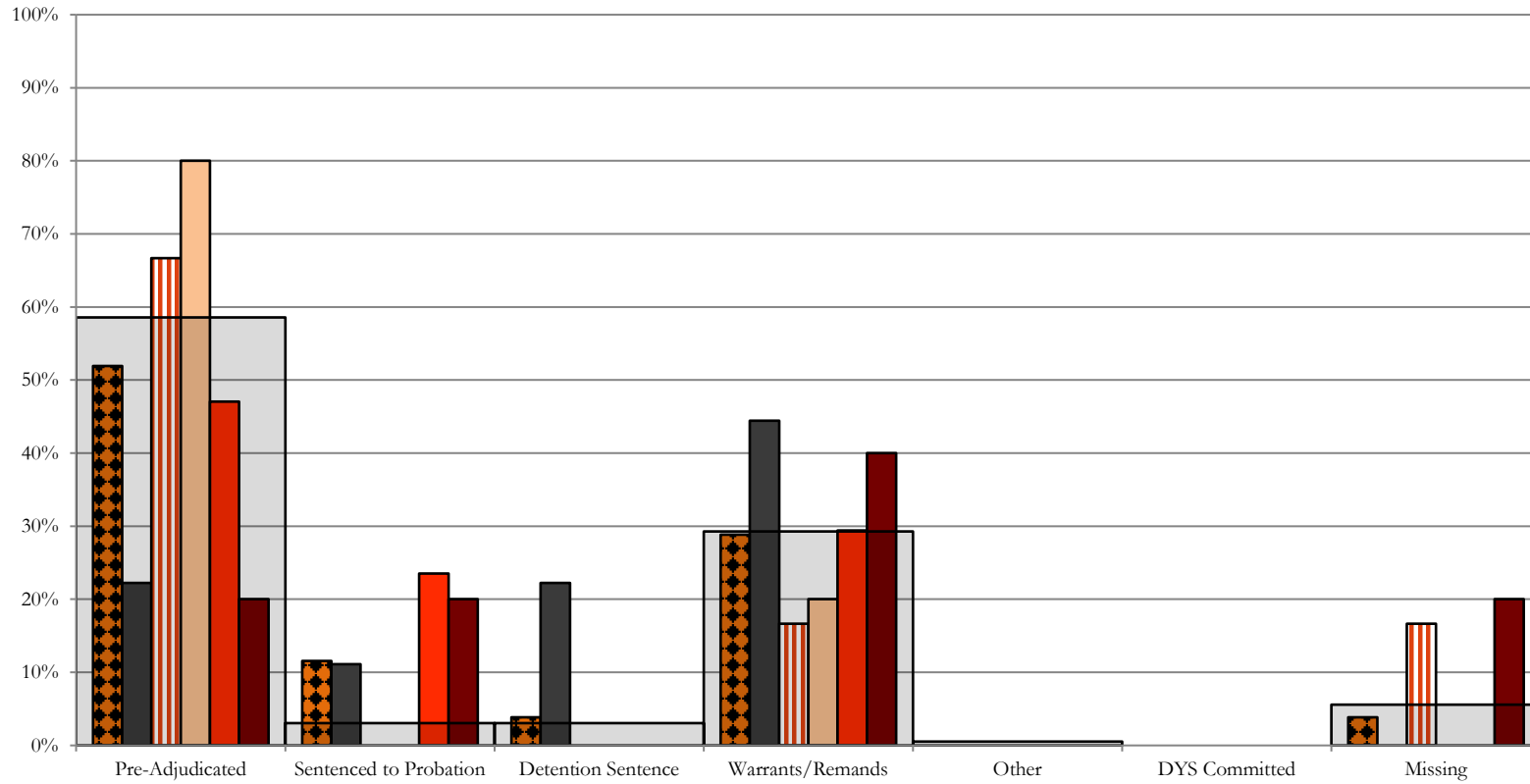
■ 2nd JD, 27 New Admits

■ STATEWIDE, 198 New Admits

Northeast Region

CYDC Reason Detained by Judicial District

January 2021 New Admits



■ NORTHEAST REGION, 52 New Admits

■ 8th JD, 9 New Admits

■ 13th JD, 6 New Admits

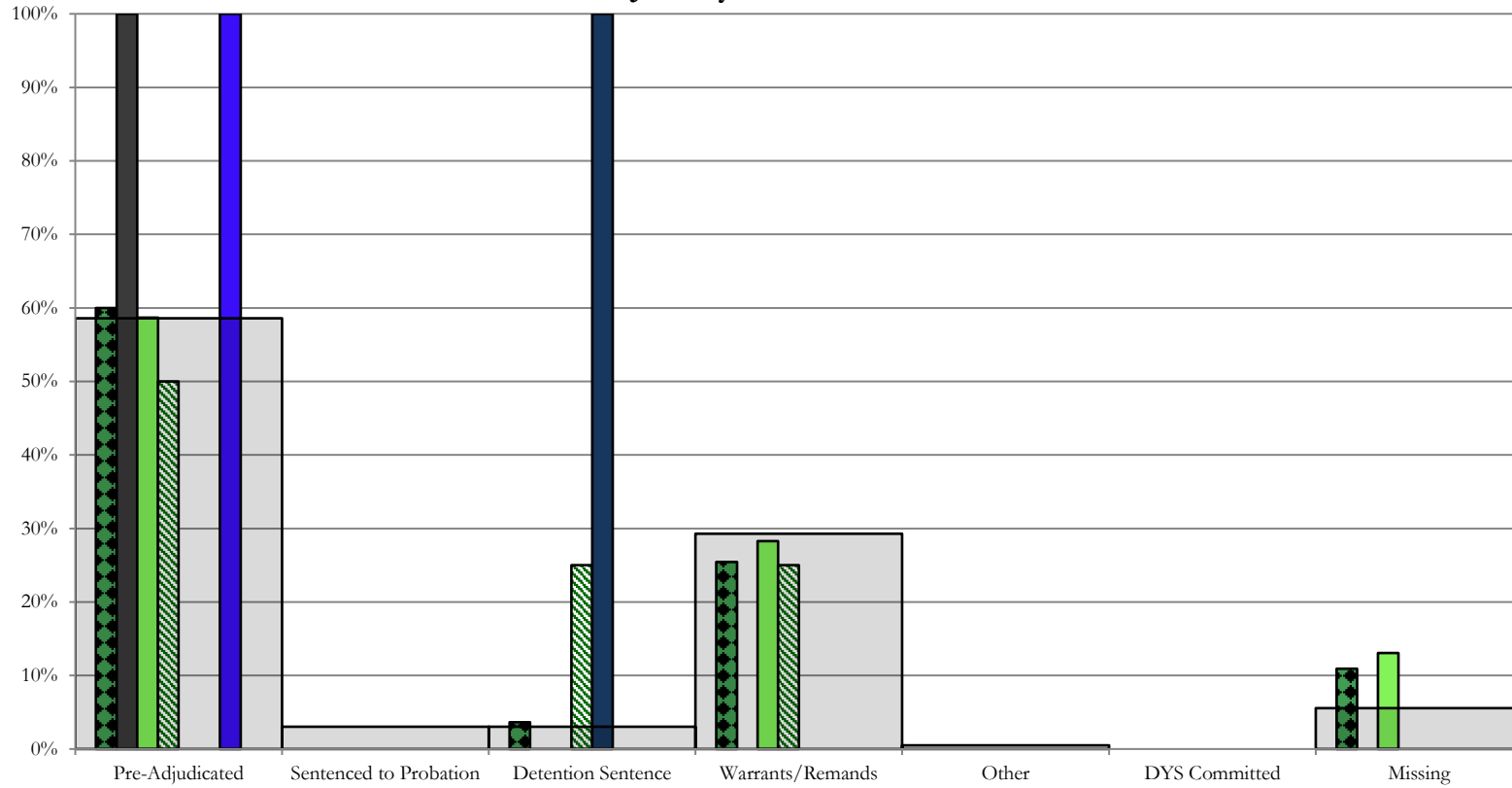
■ 17th JD, 15 New Admits

■ 19th JD, 17 New Admits

■ 20th JD, 5 New Admits

■ STATEWIDE, 198 New Admits

Southern Region CYDC Reason Detained by Judicial District January 2021 New Admits

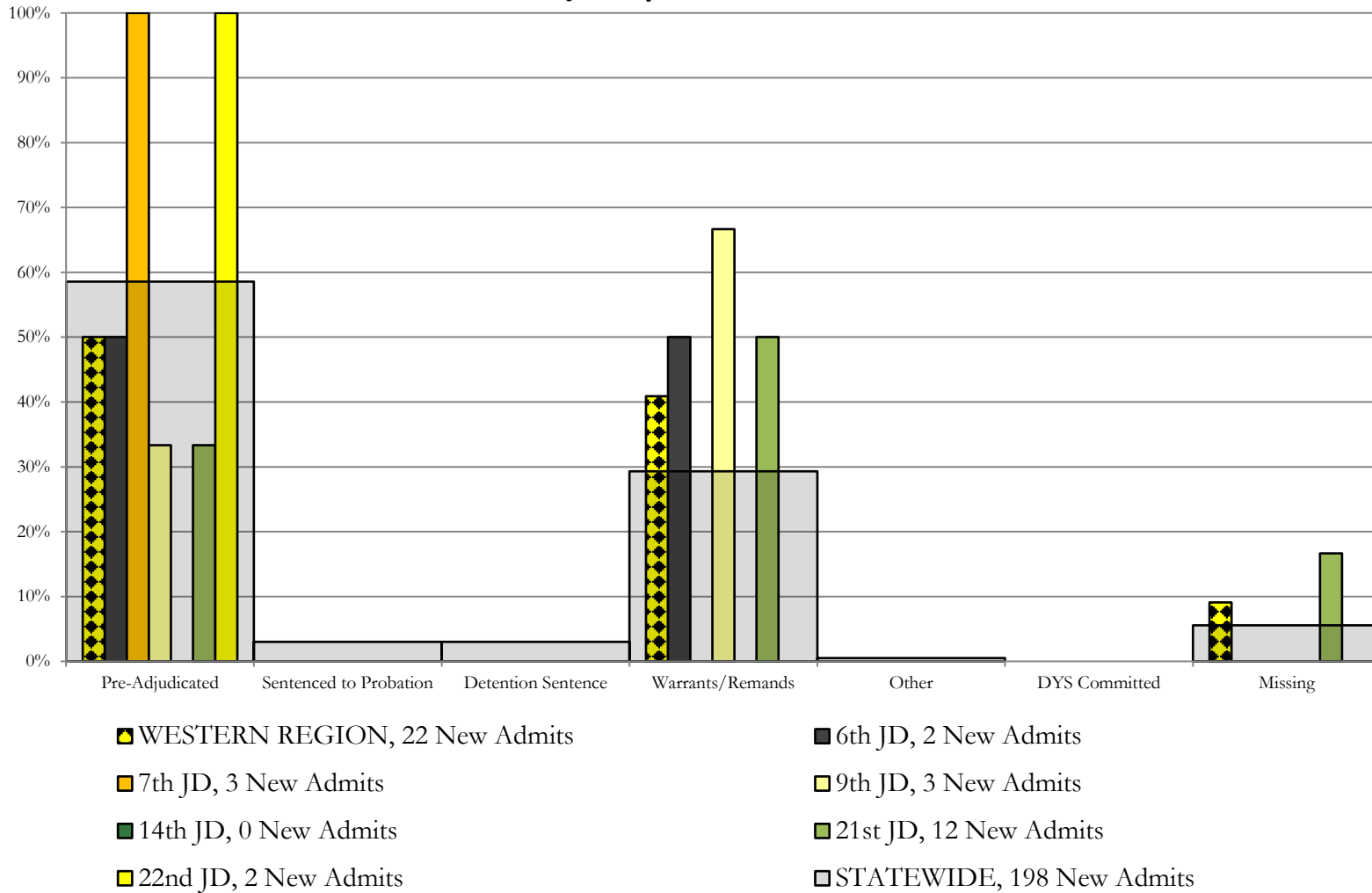


- SOUTHERN REGION, 55 New Admits
- 3rd JD, 1 New Admits
- 4th JD, 46 New Admits
- 10th JD, 4 New Admits
- 11th JD, 1 New Admits
- 12th JD, 0 New Admits
- 15th JD, 3 New Admits
- STATEWIDE, 198 New Admits

Western Region

CYDC Reason Detained by Judicial District

January 2021 New Admits



January 2021 CYDC Supplemental Report

DYS Detention Maximum Youth Served by Judicial District¹

Region	JD	Detention Capacity	Detention ADP		Maximum Youth Served on a Single Day ^{2,3}			
			January 2021	YTD	January 2021		YTD	
					Number of Youth	% of Detention Capacity	Number of Youth	% of Detention Capacity
<i>Central</i>								
	1st	34	12.9	12.6	17	50.0%	18	52.9%
	2nd	53	29.4	29.2	36	67.9%	36	67.9%
	5th	2	0.0	0.3	0	0.0%	2	100.0%
	18th	56	24.3	24.8	30	53.6%	42	75.0%
Central Region		145	66.6	66.8	74	51.0%	84	57.9%
<i>Northeast</i>								
	8th	17	6.1	5.3	10	58.8%	10	58.8%
	13th	4	1.9	1.6	4	100.0%	6	150.0%
	17th	26	13.0	13.8	16	61.5%	19	73.1%
	19th	23	10.5	9.7	14	60.9%	15	65.2%
	20th	16	1.7	2.0	3	18.8%	6	37.5%
Northeast Region		86	33.2	32.4	39	45.3%	42	48.8%
<i>Southern</i>								
	3rd	2	2.5	1.8	3	150.0%	4	200.0%
	4th	41	24.9	31.9	5	12.2%	14	34.1%
	10th	15	4.3	4.3	8	53.3%	8	53.3%
	11th	4	0.04	0.9	1	25.0%	3	75.0%
	12th	2	1.0	0.4	1	50.0%	2	100.0%
	15th	2	1.3	0.6	3	150.0%	3	150.0%
	16th	2	1.0	0.6	1	50.0%	2	100.0%
Southern Region		68	35.1	40.4	15	22.1%	21	30.9%
<i>Western</i>								
	6th	2	0.3	1.3	2	100.0%	3	150.0%
	7th	5	2.6	1.5	4	80.0%	4	80.0%
	9th	4	1.6	0.7	3	75.0%	3	75.0%
	14th	2	0.0	0.0	0	0.0%	1	50.0%
	21st	13	6.4	6.0	11	84.6%	11	84.6%
	22nd	2	0.2	0.2	1	50.0%	2	100.0%
Western Region		28	11.2	9.8	16	57.1%	16	57.1%
<i>Missing JD or Multiple JDs</i>			0.6	0.7				
Statewide		327	146.6	150.1	137	41.9%	149	45.6%

¹ Maximum youth served is the highest number of youth in detention on a single day during the month or fiscal year.

² Regional figures are not the sum of judicial districts, but represent the maximum count on one day for the entire region.

³ State figures are not the sum of regional figures, but represent the maximum count on one day for the entire state.

January 2021 CYDC Supplemental Report

CYDC Community ADP by Judicial District

Region	JD	Committed		Diversion		ICJ		Municipal		Pre-Adjudicated		Sentenced		VCO		Total	
		January 2021	YTD	January 2021	YTD	January 2021	YTD	January 2021	YTD	January 2021	YTD	January 2021	YTD	January 2021	YTD	January 2021	YTD
<i>Central</i>																	
	1st	0.0	0.9	0.0	0.0	0.0	0.0	6.0	12.9	83.9	73.6	0.9	5.7	0.0	0.0	90.8	93.1
	2nd	1.8	1.0	0.0	0.5	1.7	0.3	0.0	0.0	93.4	104.0	36.7	36.1	0.0	0.0	133.6	141.9
	5th	0.0	0.0	7.0	7.0	0.0	0.0	0.0	0.0	8.0	6.3	38.0	40.3	0.0	0.0	53.0	53.6
	18th	0.0	0.0	1.0	1.3	0.0	0.2	1.0	1.0	251.1	248.8	48.6	30.5	0.0	0.0	301.6	281.8
Central Total		1.8	2.0	8.0	8.8	1.7	0.5	7.0	13.9	436.3	432.7	124.1	112.6	0.0	0.0	579.0	570.4
<i>Northeast</i>																	
	8th	0.0	0.0	12.0	8.2	0.0	0.0	0.0	0.0	95.2	81.1	65.1	55.5	0.0	0.0	172.4	144.9
	13th	0.0	0.0	0.0	0.0	0.0	0.0	25.0	20.9	10.9	10.6	2.0	2.0	2.1	1.8	40.0	35.2
	17th	0.0	0.0	1.0	0.2	0.0	0.0	0.0	0.0	165.9	147.8	18.0	15.3	0.0	0.0	185.0	163.4
	19th	2.5	2.5	0.0	0.4	0.0	0.0	0.0	0.0	43.7	54.2	16.0	17.3	0.0	0.0	62.2	74.4
	20th	0.0	0.0	41.0	47.3	0.0	0.0	0.0	0.3	61.3	51.0	4.0	3.8	0.0	0.0	106.2	102.4
Northeast Total		2.5	2.5	54.0	56.2	0.0	0.0	25.0	21.1	377.1	344.7	105.1	93.9	2.1	1.8	565.7	520.2
<i>Southern</i>																	
	3rd	0.0	0.0	0.0	0.0	0.0	0.0	0.0	0.0	7.5	7.6	2.0	1.5	0.3	0.0	9.8	9.2
	4th	1.9	0.5	0.0	0.0	0.0	0.0	60.0	60.0	175.5	147.8	37.1	35.7	0.0	0.0	274.5	244.0
	10th	0.0	0.2	0.0	0.0	0.0	0.0	0.0	0.0	16.4	15.8	4.1	5.0	0.0	0.0	20.5	20.9
	11th	0.0	0.0	0.0	0.0	0.0	0.0	20.0	17.3	30.8	26.0	9.0	7.6	0.0	0.0	59.8	50.9
	12th	0.0	0.0	1.4	2.0	0.0	0.0	1.4	2.3	7.4	8.4	0.4	1.0	0.0	0.0	10.5	13.6
	15th	0.0	0.0	1.0	1.0	0.0	0.0	0.0	0.0	5.3	6.3	10.0	10.1	0.0	0.0	16.3	17.4
	16th	0.0	0.0	0.0	0.0	0.0	0.0	0.0	0.0	8.0	8.0	1.0	1.0	36.5	31.3	45.5	40.3
Southern Total		1.9	0.6	2.4	3.0	0.0	0.0	81.4	79.6	250.8	219.8	63.6	61.9	36.9	31.3	437.0	396.3
<i>Western</i>																	
	6th	0.0	0.0	0.0	0.0	0.0	0.0	0.0	0.0	4.3	4.6	0.0	0.6	0.0	0.0	4.3	5.3
	7th	1.0	0.2	14.0	10.9	0.0	0.0	1.0	0.9	9.1	8.9	5.3	5.6	0.0	0.0	30.4	26.3
	9th	0.0	0.0	0.0	2.3	0.0	0.0	2.9	10.3	5.9	6.2	1.8	2.2	0.0	0.0	10.7	20.9
	14th	0.0	0.0	0.0	1.2	0.0	0.0	0.0	0.4	0.0	0.4	0.0	0.9	0.0	0.0	0.0	2.9
	21st	2.0	1.6	0.0	0.1	0.0	0.0	0.0	0.0	37.0	39.0	34.0	29.5	0.0	0.0	73.0	70.3
	22nd	0.0	0.0	0.0	0.0	0.0	0.0	0.0	0.0	8.7	8.6	5.0	5.0	0.0	0.0	13.7	13.6
Western Total		3.0	1.8	14.0	14.4	0.0	0.0	3.9	11.6	65.0	67.7	46.1	43.8	0.0	0.0	132.0	139.3
Statewide Total		9.2	6.9	78.3	82.4	1.7	0.5	117.3	126.2	1,129.2	1,064.9	339.0	312.2	38.9	33.1	1,713.7	1,626.1