

November 2020*

FY 2020-2021

CYDC JDSAG SUPPLEMENTAL REPORT

Prepared by the Division of Youth Services (DYS)

Data Management & Analysis

December 24, 2020

* Following the initial announcement of positive cases of COVID-19 in Colorado on March 5th, data presented in this report largely reflect COVID-19 response and Executive Order (EO) compliance across the detained, committed, and paroled populations. The statewide detention bed availability was temporarily reduced to 200 effective April 21, 2020 COB; DYS plans to return to official allocations (327) and bed borrowing practices upon expiration of the EO. Due to the temporary nature of the reduction, DYS continues to utilize official detention bed allocations within this report. Commitment population reductions and Parole population increases are a direct result of the Division's EO response, releasing an unprecedented number of youth from residential placement to parole.



CO L O R A D O

Division of Youth Services

Office of Children, Youth & Families

November 2020 CYDC Supplemental Report

DYS Commitment ADP & New Commitments by Judicial District

Region	JD ¹	2021 Population Estimates ²	ADP ³		New Commitments		
			November 2020	YTD	November 2020	YTD	YTD Rate ⁴
<i>Central</i>							
	1st	54,247	33.3	38.6	0	3	0.6
	2nd	57,556	55.5	60.5	1	10	1.7
	5th	9,148	3.2	2.7	1	1	1.1
	18th	114,514	63.1	67.0	2	14	1.2
Central Total		235,465	155.2	168.8	4	28	1.2
<i>Northeast</i>							
	8th	35,120	17.3	16.7	3	6	1.7
	13th	8,520	2.7	2.4	1	2	2.3
	17th	69,653	33.8	33.2	0	6	0.9
	19th	39,126	27.9	28.9	2	13	3.3
	20th	30,663	5.8	4.6	1	1	0.3
Northeast Total		183,082	87.4	85.9	7	28	1.5
<i>Southern</i>							
	3rd	1,875	3.0	3.2	0	0	0.0
	4th	84,107	56.5	58.3	0	10	1.2
	10th	17,817	8.0	8.1	0	1	0.6
	11th	7,367	3.6	3.9	0	1	1.4
	12th	5,455	1.9	1.0	0	0	0.0
	15th	2,111	3.0	3.3	0	1	4.7
	16th	2,836	1.6	1.6	0	0	0.0
Southern Total		121,568	77.7	79.3	0	13	1.1
<i>Western</i>							
	6th	7,430	1.4	1.2	1	1	1.3
	7th	10,673	3.6	2.0	2	2	1.9
	9th	8,519	1.7	1.9	0	0	0.0
	14th	5,788	0.0	0.0	0	0	0.0
	21st	16,466	20.3	24.8	1	4	2.4
	22nd	3,034	4.0	4.0	0	0	0.0
Western Total		51,910	31.0	33.9	4	7	1.3
Statewide Total		592,025	351.2	367.8	15	76	1.3

¹ JD represents the judicial district in which the client was committed. Regional totals are a sum of their respective judicial districts. Regional totals reported here may differ slightly from those reported in the Monthly Population Report, where region is defined by active caseloads.

² Source: DOLA 2021 Estimates.

³ Due to rounding, totals shown may not be an exact sum of the subtotals.

⁴ Per 10,000 youth in the population.

November 2020

CYDC Supplemental Report

DYS Detention ADP and New Detention Admissions by Judicial District

Region	JD	2021 Population Estimates ¹	ADP		New Admits		
			November 2020	YTD	November 2020	YTD	YTD New Admit Rate ²
<i>Central</i>							
	1st	54,247	14.5	12.6	17	80	14.7
	2nd	57,556	30.6	29.0	30	152	26.4
	5th	9,148	0.9	0.4	2	6	6.6
	18th	114,514	27.5	25.0	29	147	12.8
Central Total		235,465	73.4	67.0	78	385	16.4
<i>Northeast</i>							
	8th	35,120	5.8	4.8	8	39	11.1
	13th	8,520	2.5	1.7	4	14	16.4
	17th	69,653	14.1	13.7	16	81	11.6
	19th	39,126	6.6	9.2	17	106	27.1
	20th	30,663	1.9	2.1	11	31	10.1
Northeast Total		183,082	31.0	31.5	56	271	14.8
<i>Southern</i>							
	3rd	1,875	2.9	1.6	1	4	21.3
	4th	84,107	31.5	34.7	23	193	22.9
	10th	17,817	5.2	3.9	7	41	23.0
	11th	7,367	0.5	1.1	2	13	17.6
	12th	5,455	0.0	0.3	0	2	3.7
	15th	2,111	1.0	0.6	0	4	18.9
	16th	2,836	0.8	0.6	0	4	14.1
Southern Total		121,568	41.9	42.7	33	261	21.5
<i>Western</i>							
	6th	7,430	1.7	1.6	1	8	10.8
	7th	10,673	1.4	1.3	0	10	9.4
	9th	8,519	0.1	0.6	1	6	7.0
	14th	5,788	0.0	0.0	0	1	1.7
	21st	16,466	4.6	6.0	15	85	51.6
	22nd	3,034	0.3	0.3	2	5	16.5
Western Total		51,910	8.1	9.8	19	115	22.2
<i>Missing JD or Multiple JDs</i>			<i>1.0</i>	<i>0.7</i>			
Statewide Total		592,025	155.4	151.7	186	1,032	17.4

¹ Source: DOLA 2021 Estimates.

² Per 10,000 youth in the population.

November 2020

CYDC Supplemental Report

DYS Detention LOS by Judicial District				
Region	JD	YTD Detention Releases	YTD LOS (days)	LOS (days) Compared to State AVG
<i>Central</i>				
	1st	73	21.7	2.0
	2nd	145	18.7	-1.0
	5th	6	27.4	7.7
	18th	157	27.0	7.3
Central Total		381	22.8	3.1
<i>Northeast</i>				
	8th	36	17.6	-2.1
	13th	15	19.5	-0.2
	17th	81	10.5	-9.2
	19th	95	9.9	-9.8
	20th	31	12.4	-7.4
Northeast Total		258	12.0	-7.7
<i>Southern</i>				
	3rd	3	12.1	-7.6
	4th	201	19.5	-0.2
	10th	35	11.2	-8.5
	11th	13	9.6	-10.1
	12th	3	110.4	90.7
	15th	4	20.6	0.9
	16th	4	21.1	1.4
Southern Total		263	18.9	-0.8
<i>Western</i>				
	6th	6	9.7	-10.0
	7th	8	9.1	-10.6
	9th	6	19.9	0.2
	14th	1	3.0	-16.7
	21st	80	8.0	-11.7
	22nd	6	5.7	-14.0
Western Total		107	8.6	-11.1
Statewide Total		1,009	19.7	-

November 2020 CDYC Supplemental Report

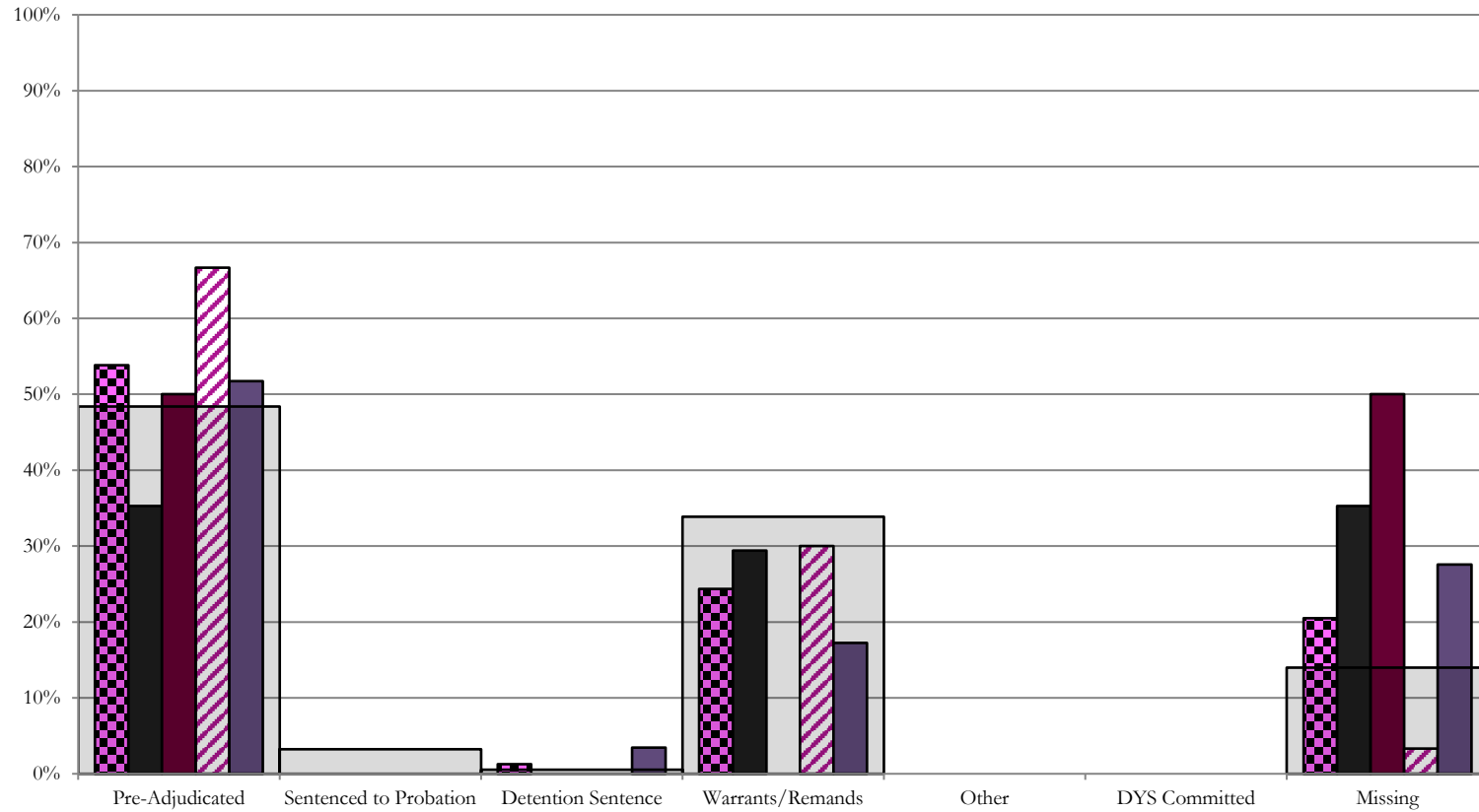
CYDC Reason Detained (RD) by Judicial District

Region	JD	Monthly New Admits	Pre-Adjudicated				Sentenced to Probation				Detention Sentence								Warrants/Remands				Other								DYS Committed				Missing			
			Felony		Misdemeanor		Technical Violator		New Charges		Probation Sentence		Detention Sentence		Valid Court Order (VCO) / Truancy		Awaiting DSS (Social Services) Placement		Failure to Appear (FTA)		Failure to Comply (FTC)		Interstate Compact on Juveniles (ICJ) Hold		Immigration Hold		No Bond Hold		Out-of-Country Warrant		Institutional		Parole		Missing			
			#	%	#	%	#	%	#	%	#	%	#	%	#	%	#	%	#	%	#	%	#	%	#	%	#	%	#	%	#	%	#	%				
Central																																						
	1st	17	4	23.5%	2	11.8%	0	0.0%	0	0.0%	0	0.0%	0	0.0%	0	0.0%	0	0.0%	1	5.9%	4	23.5%	0	0.0%	0	0.0%	0	0.0%	0	0.0%	0	0.0%	0	0.0%	0	0.0%	6	35.3%
	2nd	30	16	53.3%	4	13.3%	0	0.0%	0	0.0%	0	0.0%	0	0.0%	0	0.0%	0	0.0%	0	0.0%	9	30.0%	0	0.0%	0	0.0%	0	0.0%	0	0.0%	0	0.0%	0	0.0%	0	0.0%	1	3.3%
	5th	2	1	50.0%	0	0.0%	0	0.0%	0	0.0%	0	0.0%	0	0.0%	0	0.0%	0	0.0%	0	0.0%	0	0.0%	0	0.0%	0	0.0%	0	0.0%	0	0.0%	0	0.0%	0	0.0%	1	50.0%		
	18th	29	9	31.0%	6	20.7%	0	0.0%	0	0.0%	0	0.0%	1	3.4%	0	0.0%	0	0.0%	1	3.4%	4	13.8%	0	0.0%	0	0.0%	0	0.0%	0	0.0%	0	0.0%	0	0.0%	0	0.0%	8	27.6%
Central Total		78	30	38%	12	15%	0	0.0%	0	0.0%	0	0.0%	1	1.3%	0	0.0%	0	0.0%	2	3%	17	22%	0	0.0%	0	0.0%	0	0.0%	0	0.0%	0	0.0%	0	0.0%	0	0.0%	16	20.5%
Northeast																																						
	8th	8	3	37.5%	0	0.0%	0	0.0%	0	0.0%	0	0.0%	0	0.0%	0	0.0%	0	0.0%	1	12.5%	4	50.0%	0	0.0%	0	0.0%	0	0.0%	0	0.0%	0	0.0%	0	0.0%	0	0.0%	0	0.0%
	13th	4	3	75.0%	0	0.0%	0	0.0%	0	0.0%	0	0.0%	0	0.0%	0	0.0%	0	0.0%	0	0.0%	1	25.0%	0	0.0%	0	0.0%	0	0.0%	0	0.0%	0	0.0%	0	0.0%	0	0.0%	0	0.0%
	17th	16	8	50.0%	1	6.3%	0	0.0%	0	0.0%	0	0.0%	0	0.0%	0	0.0%	0	0.0%	2	12.5%	4	25.0%	0	0.0%	0	0.0%	0	0.0%	0	0.0%	0	0.0%	0	0.0%	0	0.0%	1	6.3%
	19th	17	4	23.5%	5	29.4%	6	35.3%	0	0.0%	0	0.0%	0	0.0%	0	0.0%	0	0.0%	1	5.9%	1	5.9%	0	0.0%	0	0.0%	0	0.0%	0	0.0%	0	0.0%	0	0.0%	0	0.0%	0	0.0%
	20th	11	3	27.3%	0	0.0%	0	0.0%	0	0.0%	0	0.0%	0	0.0%	0	0.0%	0	0.0%	1	9.1%	1	9.1%	0	0.0%	0	0.0%	0	0.0%	0	0.0%	0	0.0%	0	0.0%	0	0.0%	6	54.5%
Northeast Total		56	21	38%	6	11%	6	10.7%	0	0.0%	0	0.0%	0	0.0%	0	0.0%	0	0.0%	5	8.9%	11	20%	0	0.0%	0	0.0%	0	0.0%	0	0.0%	0	0.0%	0	0.0%	0	0.0%	7	13%
Southern																																						
	3rd	1	0	0.0%	1	100.0%	0	0.0%	0	0.0%	0	0.0%	0	0.0%	0	0.0%	0	0.0%	0	0.0%	0	0.0%	0	0.0%	0	0.0%	0	0.0%	0	0.0%	0	0.0%	0	0.0%	0	0.0%	0	0.0%
	4th	23	8	34.8%	4	17.4%	0	0.0%	0	0.0%	0	0.0%	0	0.0%	0	0.0%	0	0.0%	5	21.7%	5	21.7%	0	0.0%	0	0.0%	0	0.0%	0	0.0%	0	0.0%	0	0.0%	0	0.0%	1	4.3%
	10th	7	2	28.6%	2	28.6%	0	0.0%	0	0.0%	0	0.0%	0	0.0%	0	0.0%	0	0.0%	1	14.3%	2	28.6%	0	0.0%	0	0.0%	0	0.0%	0	0.0%	0	0.0%	0	0.0%	0	0.0%	0	0.0%
	11th	2	0	0.0%	0	0.0%	0	0.0%	0	0.0%	0	0.0%	0	0.0%	0	0.0%	0	0.0%	0	0.0%	2	100.0%	0	0.0%	0	0.0%	0	0.0%	0	0.0%	0	0.0%	0	0.0%	0	0.0%	0	0.0%
	12th	0	0	0.0%	0	0.0%	0	0.0%	0	0.0%	0	0.0%	0	0.0%	0	0.0%	0	0.0%	0	0.0%	0	0.0%	0	0.0%	0	0.0%	0	0.0%	0	0.0%	0	0.0%	0	0.0%	0	0.0%	0	0.0%
	15th	0	0	0.0%	0	0.0%	0	0.0%	0	0.0%	0	0.0%	0	0.0%	0	0.0%	0	0.0%	0	0.0%	0	0.0%	0	0.0%	0	0.0%	0	0.0%	0	0.0%	0	0.0%	0	0.0%	0	0.0%	0	0.0%
	16th	0	0	0.0%	0	0.0%	0	0.0%	0	0.0%	0	0.0%	0	0.0%	0	0.0%	0	0.0%	0	0.0%	0	0.0%	0	0.0%	0	0.0%	0	0.0%	0	0.0%	0	0.0%	0	0.0%	0	0.0%	0	0.0%
Southern Total		33	10	30%	7	21%	0	0.0%	0	0.0%	0	0.0%	0	0.0%	0	0.0%	0	0.0%	6	18%	9	27%	0	0.0%	0	0.0%	0	0.0%	0	0.0%	0	0.0%	0	0.0%	0	0.0%	1	3%
Western																																						
	6th	1	0	0.0%	0	0.0%	0	0.0%	0	0.0%	0	0.0%	0	0.0%	0	0.0%	0	0.0%	0	0.0%	0	0.0%	0	0.0%	0	0.0%	0	0.0%	0	0.0%	0	0.0%	0	0.0%	0	0.0%	1	100%
	7th	0	0	0.0%	0	0.0%	0	0.0%	0	0.0%	0	0.0%	0	0.0%	0	0.0%	0	0.0%	0	0.0%	0	0.0%	0	0.0%	0	0.0%	0	0.0%	0	0.0%	0	0.0%	0	0.0%	0	0.0%	0	0%
	9th	1	1	100.0%	0	0.0%	0	0.0%	0	0.0%	0	0.0%	0	0.0%	0	0.0%	0	0.0%	0	0.0%	0	0.0%	0	0.0%	0	0.0%	0	0.0%	0	0.0%	0	0.0%	0	0.0%	0	0.0%	0	0%
	14th	0	0	0.0%	0	0.0%	0	0.0%	0	0.0%	0	0.0%	0	0.0%	0	0.0%	0	0.0%	0	0.0%	0	0.0%	0	0.0%	0	0.0%	0	0.0%	0	0.0%	0	0.0%	0	0.0%	0	0.0%	0	0%
	21st	15	2	13.3%	0	0.0%	0	0.0%	0	0.0%	0	0.0%	0	0.0%	0	0.0%	0	0.0%	2	13.3%	10	66.7%	0	0.0%	0	0.0%	0	0.0%	0	0.0%	0	0.0%	0	0.0%	0	0.0%	1	7%
	22nd	2	1	50.0%	0	0.0%	0	0.0%	0	0.0%	0	0.0%	0	0.0%	0	0.0%	0	0.0%	0	0.0%	1	50.0%	0	0.0%	0	0.0%	0	0.0%	0	0.0%	0	0.0%	0	0.0%	0	0.0%	0	0%
Western Total		19	4	21%	0	0.0%	0	0.0%	0	0.0%	0	0.0%	0	0.0%	0	0.0%	0	0.0%	2	10.5%	11	58%	0	0.0%	0	0.0%	0	0.0%	0	0.0%	0	0.0%	0	0.0%	0	0.0%	2	11%
Individual RD Totals		186	65	35%	25	13%	6	3.2%	0	0.0%	0	0.0%	1	0.5%	0	0.0%	0	0.0%	15	8%	48	26%	0	0.0%	0	0.0%	0	0.0%	0	0.0%	0	0.0%	0	0.0%	0	0.0%	26	14%
Statewide Totals		186	90	48.4%	6	3.2%	1	0.5%	0	0.0%	0	0.0%	0	0.0%	0	0.0%	0	0.0%	63	33.9%	0	0.0%	0	0.0%	0	0.0%	0	0.0%	0	0.0%	0	0.0%	0	0.0%	26	14%		

Central Region

CYDC Reason Detained by Judicial District

November 2020 New Admits



■ CENTRAL REGION, 78 New Admits

■ 1st JD, 17 New Admits

■ 5th JD, 2 New Admits

■ 2nd JD, 30 New Admits

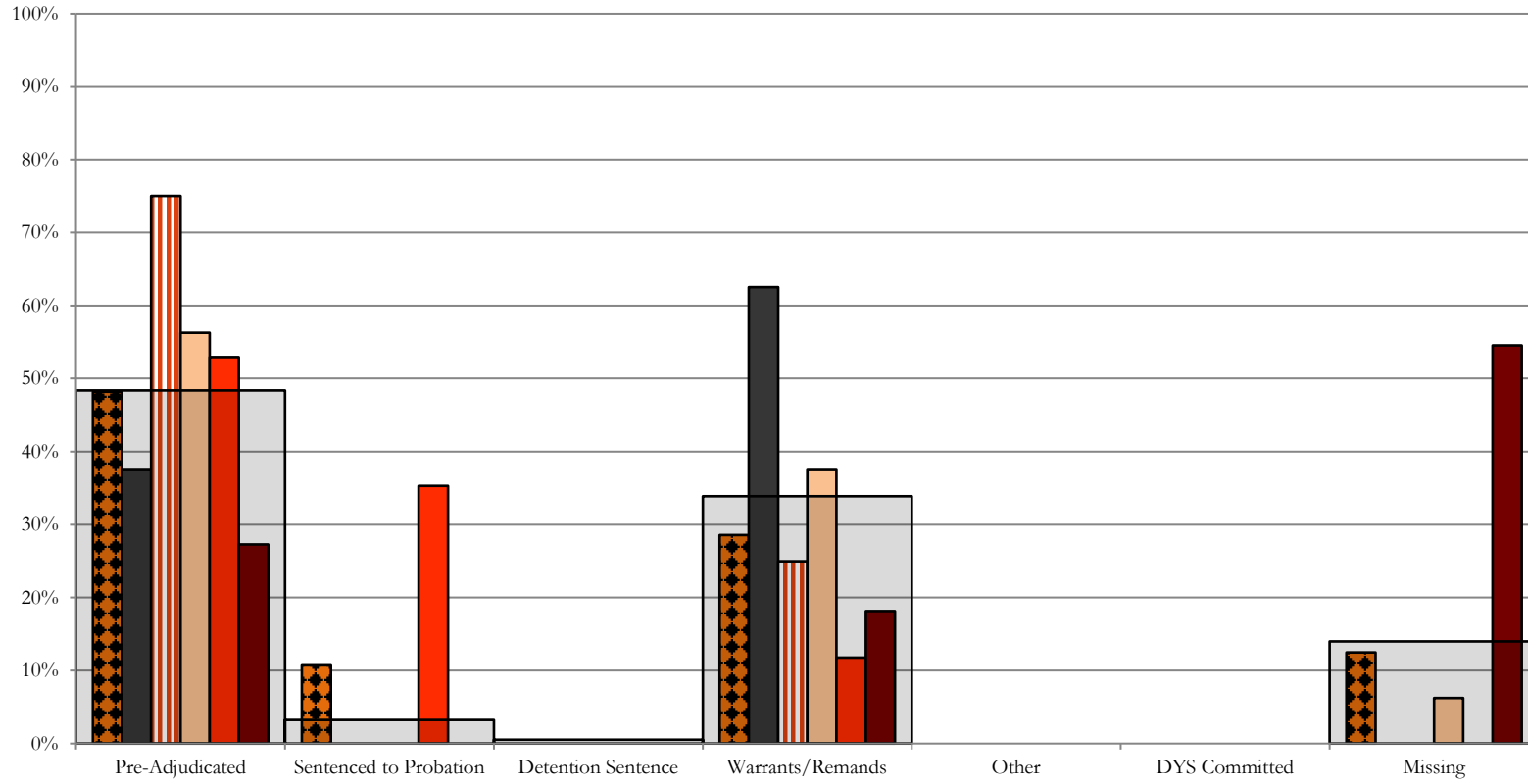
■ 18th JD, 29 New Admits

■ STATEWIDE, 186 New Admits

Northeast Region

CYDC Reason Detained by Judicial District

November 2020 New Admits



■ NORTHEAST REGION, 56 New Admits

■ 8th JD, 8 New Admits

■ 13th JD, 4 New Admits

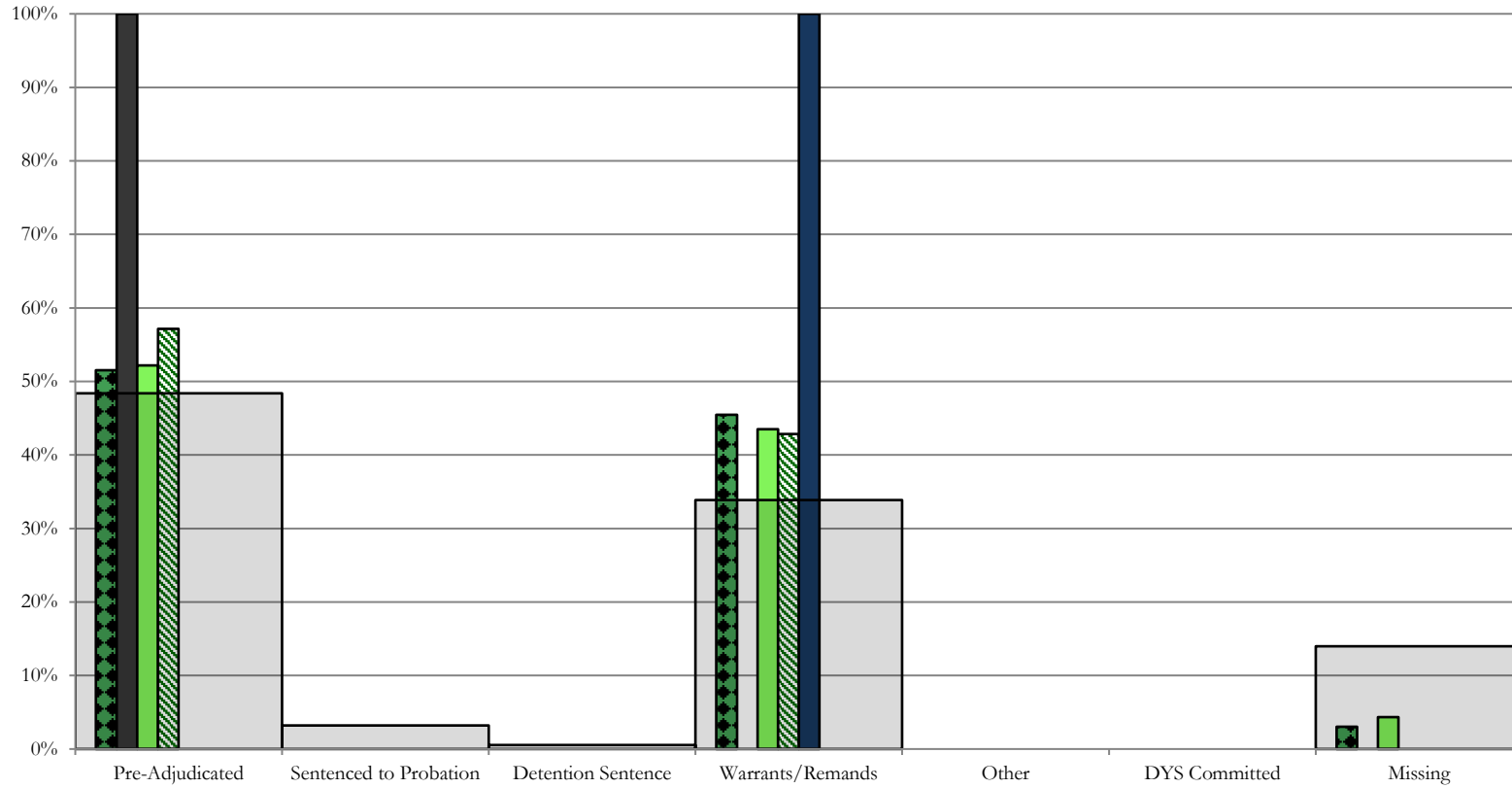
■ 17th JD, 16 New Admits

■ 19th JD, 17 New Admits

■ 20th JD, 11 New Admits

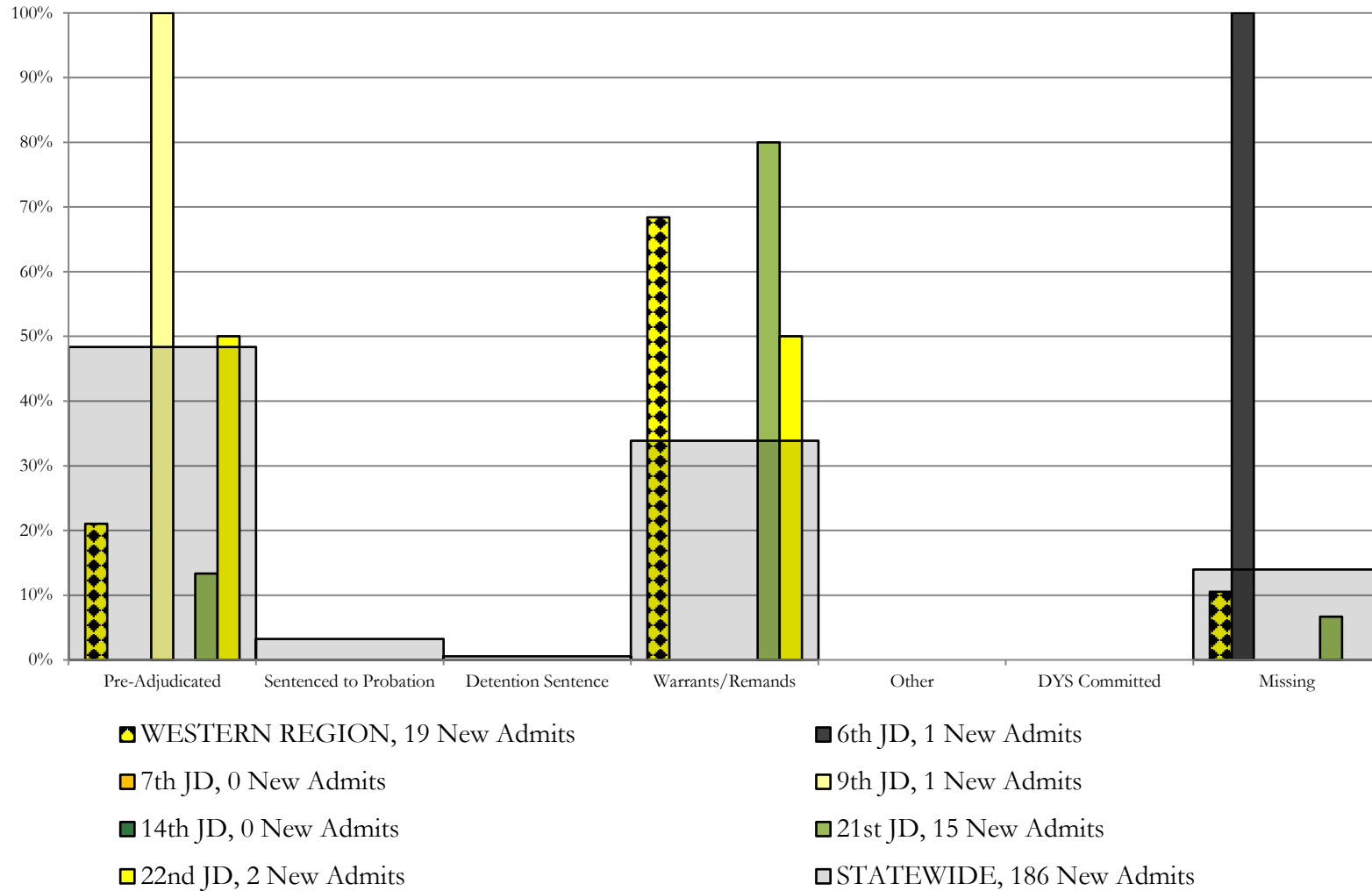
■ STATEWIDE, 186 New Admits

Southern Region CYDC Reason Detained by Judicial District November 2020 New Admits



- SOUTHERN REGION, 33 New Admits
- 3rd JD, 1 New Admits
- 4th JD, 23 New Admits
- 10th JD, 7 New Admits
- 11th JD, 2 New Admits
- 12th JD, 0 New Admits
- 15th JD, 0 New Admits
- 16th JD, 0 New Admits
- STATEWIDE, 186 New Admits

Western Region CYDC Reason Detained by Judicial District November 2020 New Admits



November 2020 CYDC Supplemental Report

DYS Detention Maximum Youth Served by Judicial District¹

Region	JD	Detention Capacity	Detention ADP		Maximum Youth Served on a Single Day ^{2,3}			
			November 2020	YTD	November 2020		YTD	
					Number of Youth	% of Detention Capacity	Number of Youth	% of Detention Capacity
<i>Central</i>								
	1st	34	14.5	12.6	18	52.9%	18	52.9%
	2nd	53	30.6	29.0	36	67.9%	36	67.9%
	5th	2	0.9	0.4	1	50.0%	2	100.0%
	18th	56	27.5	25.0	33	58.9%	42	75.0%
Central Region		145	73.4	67.0	85	58.6%	85	58.6%
<i>Northeast</i>								
	8th	17	5.8	4.8	8	47.1%	8	47.1%
	13th	4	2.5	1.7	6	150.0%	6	150.0%
	17th	26	14.1	13.7	17	65.4%	19	73.1%
	19th	23	6.6	9.2	12	52.2%	15	65.2%
	20th	16	1.9	2.1	3	18.8%	6	37.5%
Northeast Region		86	31.0	31.5	38	44.2%	41	47.7%
<i>Southern</i>								
	3rd	2	2.9	1.6	4	200.0%	4	200.0%
	4th	41	31.5	34.7	6	14.6%	14	34.1%
	10th	15	5.2	3.9	7	46.7%	7	46.7%
	11th	4	0.5	1.1	2	50.0%	3	75.0%
	12th	2	0.0	0.3	0	0.0%	2	100.0%
	15th	2	1.0	0.6	1	50.0%	2	100.0%
	16th	2	0.8	0.6	1	50.0%	2	100.0%
Southern Region		68	41.9	42.7	15	22.1%	21	30.9%
<i>Western</i>								
	6th	2	1.7	1.6	2	100.0%	3	150.0%
	7th	5	1.4	1.3	3	60.0%	4	80.0%
	9th	4	0.1	0.6	1	25.0%	2	50.0%
	14th	2	0.0	0.0	0	0.0%	1	50.0%
	21st	13	4.6	6.0	9	69.2%	11	84.6%
	22nd	2	0.3	0.3	2	100.0%	2	100.0%
Western Region		28	8.1	9.8	12	42.9%	15	53.6%
<i>Missing JD or Multiple JDs</i>			1.0	0.7				
Statewide		327	155.4	151.7	137	41.9%	148	45.3%

¹ Maximum youth served is the highest number of youth in detention on a single day during the month or fiscal year.

² Regional figures are not the sum of judicial districts, but represent the maximum count on one day for the entire region.

³ State figures are not the sum of regional figures, but represent the maximum count on one day for the entire state.

November 2020 CYDC Supplemental Report

CYDC Community ADP by Judicial District

Region	JD	Committed		Diversion		ICJ		Municipal		Pre-Adjudicated		Sentenced		VCO		Total	
		November 2020	YTD	November 2020	YTD	November 2020	YTD	November 2020	YTD	November 2020	YTD	November 2020	YTD	November 2020	YTD	November 2020	YTD
<i>Central</i>																	
	1st	1.0	1.7	0.0	0.0	0.0	0.0	11.7	14.5	89.9	78.1	5.3	9.6	0.0	0.0	107.9	103.9
	2nd	1.8	1.0	0.0	0.7	1.0	0.2	0.0	0.0	122.7	115.2	39.5	37.3	0.0	0.0	165.0	154.5
	5th	0.0	0.0	7.0	7.0	0.0	0.0	0.0	0.0	9.1	7.8	31.0	31.0	0.0	0.0	47.1	45.8
	18th	0.0	0.0	1.0	1.5	0.0	0.1	1.0	1.0	254.4	250.1	28.6	27.5	0.0	0.0	285.0	280.1
Central Total		2.8	2.8	8.0	9.2	1.0	0.4	12.7	15.5	476.1	451.2	104.5	105.3	0.0	0.0	605.1	584.3
<i>Northeast</i>																	
	8th	0.0	0.0	7.0	7.1	0.0	0.0	0.0	0.0	90.7	81.1	62.3	53.2	0.0	0.0	160.0	141.3
	13th	0.0	0.0	0.0	0.0	0.0	0.0	22.0	18.6	7.6	10.8	3.6	2.1	2.0	1.6	35.2	33.2
	17th	0.0	0.0	0.0	0.0	0.0	0.0	0.0	0.0	152.9	141.5	15.0	14.7	0.0	0.0	168.0	156.3
	19th	0.6	1.4	2.0	0.6	0.0	0.0	0.0	0.0	44.4	56.7	17.5	16.9	0.0	0.0	64.5	75.7
	20th	0.0	0.0	43.4	52.3	2.0	1.7	2.0	0.9	71.3	58.4	6.0	4.3	0.0	0.0	124.8	117.5
Northeast Total		0.6	1.4	52.4	60.0	2.0	1.7	24.0	19.5	366.9	348.4	104.4	91.3	2.0	1.6	552.4	523.9
<i>Southern</i>																	
	3rd	0.0	0.0	0.0	0.0	0.0	0.0	0.0	0.0	7.4	9.0	2.0	1.3	0.0	0.0	9.4	10.3
	4th	0.0	0.1	0.0	0.0	0.0	0.0	61.0	61.0	141.9	137.6	31.4	35.3	0.0	0.0	234.3	234.0
	10th	0.0	0.2	0.0	0.0	0.0	0.0	0.0	0.0	15.9	16.1	5.5	5.6	0.0	0.0	21.4	22.0
	11th	0.0	0.0	0.0	0.0	0.0	0.0	19.3	16.2	28.5	25.0	8.5	7.1	0.0	0.0	56.2	48.3
	12th	0.0	0.0	2.2	2.4	0.0	0.0	3.0	2.6	8.0	9.0	2.0	1.2	0.0	0.0	15.2	15.2
	15th	0.0	0.0	1.0	1.0	0.0	0.0	0.0	0.0	6.0	5.9	11.0	10.3	0.0	0.0	18.0	17.1
	16th	0.0	0.0	0.0	0.0	0.0	0.0	0.0	0.0	8.0	8.0	1.0	1.0	28.0	29.5	37.0	38.5
Southern Total		0.0	0.4	3.2	3.4	0.0	0.0	83.3	79.8	215.8	210.6	61.4	61.7	28.0	29.5	391.6	385.3
<i>Western</i>																	
	6th	0.0	0.0	0.0	0.0	0.0	0.0	0.0	0.0	4.6	5.0	0.8	0.9	0.0	0.0	5.3	5.9
	7th	0.0	0.0	15.7	9.5	0.0	0.0	1.0	0.8	6.9	9.0	4.7	5.7	0.0	0.0	28.3	25.1
	9th	0.0	0.0	0.3	3.2	0.0	0.0	9.5	10.6	6.6	6.6	2.0	1.5	0.0	0.0	18.3	21.9
	14th	0.0	0.0	2.0	2.0	0.0	0.0	1.0	1.0	3.0	3.0	1.0	1.0	0.0	0.0	7.0	7.0
	21st	2.0	1.3	0.0	0.2	0.0	0.0	0.0	0.0	43.6	41.7	30.7	26.9	0.0	0.0	76.3	70.0
	22nd	0.0	0.0	0.0	0.0	0.0	0.0	0.0	0.0	6.8	9.0	5.0	5.0	0.0	0.0	11.8	14.0
Western Total		2.0	1.3	17.9	14.9	0.0	0.0	11.5	12.4	71.4	74.2	44.2	41.1	0.0	0.0	147.1	143.9
Statewide Total		5.4	5.9	81.6	87.5	3.0	2.1	131.5	127.1	1,130.2	1,084.4	314.5	299.4	30.0	31.1	1,696.1	1,637.5