

October 2020*

FY 2020-2021

CYDC JDSAG SUPPLEMENTAL REPORT

Prepared by the Division of Youth Services (DYS)

Data Management & Analysis

November 25, 2020

* Following the initial announcement of positive cases of COVID-19 in Colorado on March 5th, data presented in this report largely reflect COVID-19 response and Executive Order (EO) compliance across the detained, committed, and paroled populations. The statewide detention bed availability was temporarily reduced to 200 effective April 21, 2020 COB; DYS plans to return to official allocations (327) and bed borrowing practices upon expiration of the EO. Due to the temporary nature of the reduction, DYS continues to utilize official detention bed allocations within this report. Commitment population reductions and Parole population increases are a direct result of the Division's EO response, releasing an unprecedented number of youth from residential placement to parole.



COLORADO

Division of Youth Services

Office of Children, Youth & Families

October 2020 CYDC Supplemental Report

DYS Commitment ADP & New Commitments by Judicial District

Region	JD ¹	2021 Population Estimates ²	ADP ³		New Commitments		
			October 2020	YTD	October 2020	YTD	YTD Rate ⁴
<i>Central</i>							
	1st	54,247	38.7	39.6	0	3	0.6
	2nd	57,556	60.4	61.6	3	9	1.6
	5th	9,148	3.0	2.6	0	0	0.0
	18th	114,514	68.1	67.9	2	12	1.0
Central Total		235,465	170.2	171.8	5	24	1.0
<i>Northeast</i>							
	8th	35,120	16.8	16.6	0	3	0.9
	13th	8,520	2.3	2.4	0	1	1.2
	17th	69,653	35.2	32.9	2	6	0.9
	19th	39,126	29.0	29.2	3	11	2.8
	20th	30,663	5.0	4.3	0	0	0.0
Northeast Total		183,082	88.3	85.3	5	21	1.1
<i>Southern</i>							
	3rd	1,875	3.7	3.2	0	0	0.0
	4th	84,107	60.1	58.5	0	10	1.2
	10th	17,817	9.0	8.2	0	1	0.6
	11th	7,367	4.0	3.9	0	1	1.4
	12th	5,455	1.8	0.8	0	0	0.0
	15th	2,111	2.9	3.3	1	1	4.7
	16th	2,836	2.0	1.6	0	0	0.0
Southern Total		121,568	83.5	79.5	1	13	1.1
<i>Western</i>							
	6th	7,430	1.0	1.1	0	0	0.0
	7th	10,673	2.0	1.6	0	0	0.0
	9th	8,519	2.0	2.0	0	0	0.0
	14th	5,788	0.0	0.0	0	0	0.0
	21st	16,466	23.0	25.8	2	3	1.8
	22nd	3,034	4.0	3.9	0	0	0.0
Western Total		51,910	32.0	34.5	2	3	0.6
Statewide Total		592,025	374.1	371.1	13	61	1.0

¹ JD represents the judicial district in which the client was committed. Regional totals are a sum of their respective judicial districts. Regional totals reported here may differ slightly from those reported in the Monthly Population Report, where region is defined by active caseloads.

² Source: DOLA 2021 Estimates.

³ Due to rounding, totals shown may not be an exact sum of the subtotals.

⁴ Per 10,000 youth in the population.

October 2020 CYDC Supplemental Report

DYS Detention ADP and New Detention Admissions by Judicial District

Region	JD	2021 Population Estimates ¹	ADP		New Admits		
			October 2020	YTD	October 2020	YTD	YTD New Admit Rate ²
<i>Central</i>							
	1st	54,247	13.0	12.5	15	63	11.6
	2nd	57,556	31.5	28.6	35	122	21.2
	5th	9,148	0.5	0.3	2	4	4.4
	18th	114,514	24.1	24.6	35	119	10.4
Central Total		235,465	69.1	66.0	87	308	13.1
<i>Northeast</i>							
	8th	35,120	6.4	4.5	9	31	8.8
	13th	8,520	0.6	1.5	2	10	11.7
	17th	69,653	16.2	13.6	13	65	9.3
	19th	39,126	11.5	10.0	23	89	22.7
	20th	30,663	1.5	2.2	6	20	6.5
Northeast Total		183,082	36.2	31.8	53	215	11.7
<i>Southern</i>							
	3rd	1,875	2.1	1.3	2	3	16.0
	4th	84,107	34.0	35.7	29	170	20.2
	10th	17,817	4.3	3.6	8	34	19.1
	11th	7,367	0.8	1.2	3	11	14.9
	12th	5,455	0.0	0.3	0	2	3.7
	15th	2,111	1.1	0.5	2	4	18.9
	16th	2,836	1.0	0.5	0	4	14.1
Southern Total		121,568	43.4	43.1	44	228	18.8
<i>Western</i>							
	6th	7,430	1.5	1.5	1	7	9.4
	7th	10,673	2.9	1.3	3	10	9.4
	9th	8,519	1.4	0.7	1	5	5.9
	14th	5,788	0.0	0.0	0	1	1.7
	21st	16,466	5.8	6.4	19	70	42.5
	22nd	3,034	0.0	0.3	0	3	9.9
Western Total		51,910	11.6	10.2	24	96	18.5
<i>Missing JD or Multiple JDs</i>			<i>0.9</i>	<i>0.6</i>			
Statewide Total		592,025	161.2	151.6	208	847	14.3

¹ Source: DOLA 2021 Estimates.

² Per 10,000 youth in the population.

October 2020 CYDC Supplemental Report

DYS Detention LOS by Judicial District				
Region	JD	YTD Detention Releases	YTD LOS (days)	LOS (days) Compared to State AVG
<i>Central</i>				
	1st	60	24.4	3.7
	2nd	117	20.1	-0.7
	5th	5	32.5	11.7
	18th	129	29.9	9.2
Central Total		311	25.2	4.5
<i>Northeast</i>				
	8th	29	18.8	-1.9
	13th	10	20.9	0.2
	17th	67	12.5	-8.2
	19th	81	8.9	-11.8
	20th	21	17.1	-3.7
Northeast Total		208	12.9	-7.9
<i>Southern</i>				
	3rd	1	1.0	-19.7
	4th	169	19.8	-0.9
	10th	30	9.9	-10.9
	11th	12	10.4	-10.3
	12th	3	110.4	89.7
	15th	3	11.4	-9.3
	16th	3	6.1	-14.7
Southern Total		221	18.8	-1.9
<i>Western</i>				
	6th	5	11.5	-9.2
	7th	8	9.1	-11.7
	9th	5	23.3	2.6
	14th	1	3.0	-17.7
	21st	67	8.5	-12.3
	22nd	4	7.1	-13.7
Western Total		90	9.4	-11.3
Statewide Total		830	20.7	-

October 2020 CDYC Supplemental Report

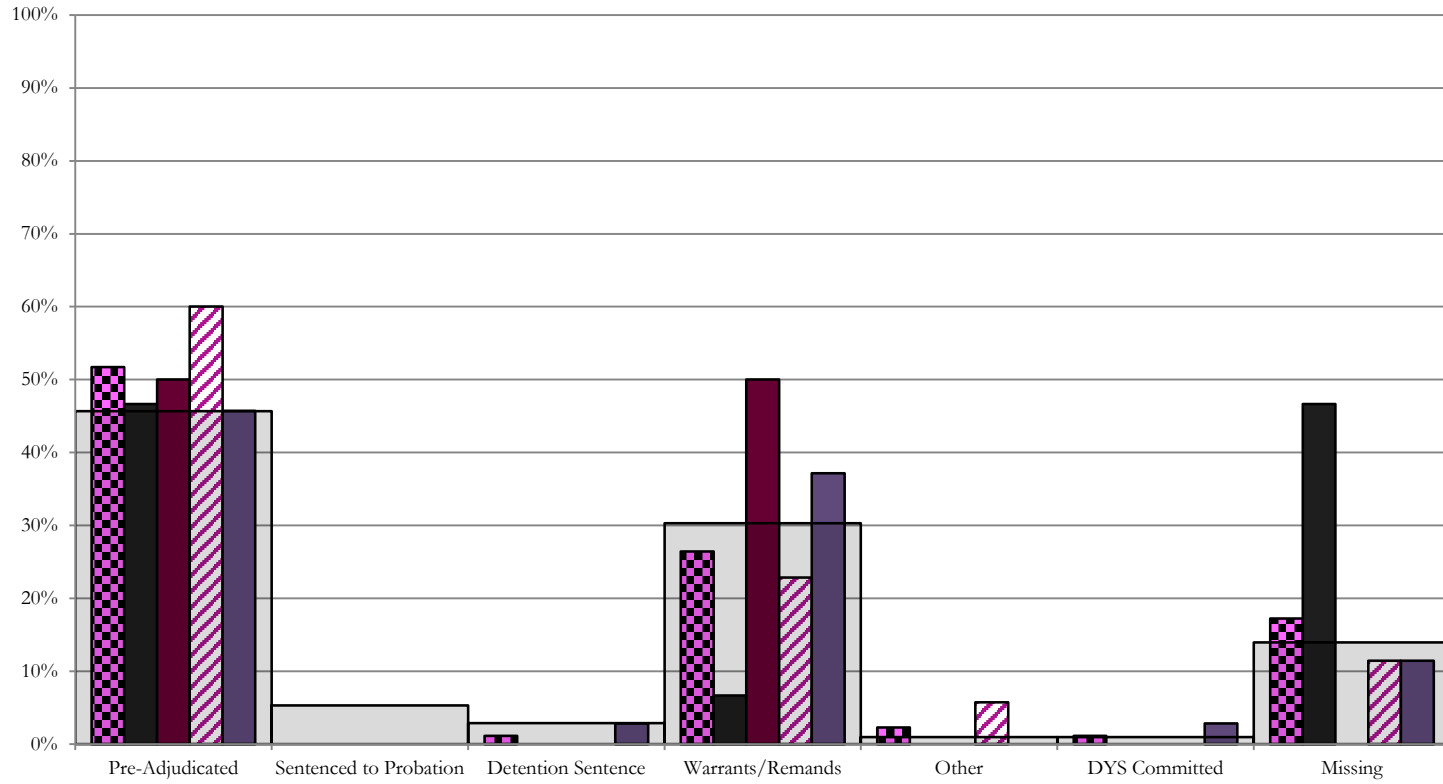
CYDC Reason Detained (RD) by Judicial District

Region	JD	Monthly New Admits	Pre-Adjudicated				Sentenced to Probation				Detention Sentence								Warrants/Remands				Other						DYS Committed		Missing							
			Felony		Misdemeanor		Technical Violator		New Charges		Probation Sentence		Detention Sentence		Valid Court Order (VCO) Truancy		Awaiting DSS (Social Services) Placement		Failure to Appear (FTA)		Failure to Comply (FTC)		Interstate Compact on Juveniles (ICJ) Hold		Immigration Hold		No Bond Hold		Out-of-Country Warrant		Institutional		Parole		Missing			
			#	%	#	%	#	%	#	%	#	%	#	%	#	%	#	%	#	%	#	%	#	%	#	%	#	%	#	%	#	%	#	%				
Central																																						
	1st	15	5	33.3%	2	13.3%	0	0.0%	0	0.0%	0	0.0%	0	0.0%	0	0.0%	0	0.0%	0	0.0%	1	6.7%	0	0.0%	0	0.0%	0	0.0%	0	0.0%	0	0.0%	0	0.0%	7	46.7%		
	2nd	35	16	45.7%	5	14.3%	0	0.0%	0	0.0%	0	0.0%	0	0.0%	0	0.0%	0	0.0%	5	14.3%	3	8.6%	2	5.7%	0	0.0%	0	0.0%	0	0.0%	0	0.0%	0	0.0%	4	11.4%		
	5th	2	1	50.0%	0	0.0%	0	0.0%	0	0.0%	0	0.0%	0	0.0%	0	0.0%	0	0.0%	0	0.0%	1	50.0%	0	0.0%	0	0.0%	0	0.0%	0	0.0%	0	0.0%	0	0.0%	0	0.0%		
	18th	35	12	34.3%	4	11.4%	0	0.0%	0	0.0%	0	0.0%	1	2.9%	0	0.0%	0	0.0%	3	8.6%	10	28.6%	0	0.0%	0	0.0%	0	0.0%	0	0.0%	0	0.0%	1	2.9%	4	11.4%		
Central Total		87	34	39%	11	13%	0	0.0%	0	0.0%	0	0.0%	1	1.1%	0	0.0%	0	0.0%	8	9%	15	17%	2	2.3%	0	0.0%	0	0.0%	0	0.0%	0	0.0%	0	0.0%	1	1.1%	15	17.2%
Northeast																																						
	8th	9	4	44.4%	0	0.0%	0	0.0%	0	0.0%	0	0.0%	1	11.1%	0	0.0%	0	0.0%	0	0.0%	2	22.2%	0	0.0%	0	0.0%	0	0.0%	0	0.0%	0	0.0%	0	0.0%	2	22.2%		
	13th	2	0	0.0%	0	0.0%	0	0.0%	0	0.0%	0	0.0%	0	0.0%	0	0.0%	0	0.0%	2	100.0%	0	0.0%	0	0.0%	0	0.0%	0	0.0%	0	0.0%	0	0.0%	0	0.0%	0	0.0%		
	17th	13	8	61.5%	0	0.0%	0	0.0%	0	0.0%	0	0.0%	0	0.0%	0	0.0%	0	0.0%	2	15.4%	2	15.4%	0	0.0%	0	0.0%	0	0.0%	0	0.0%	0	0.0%	0	0.0%	1	7.7%		
	19th	23	9	39.1%	4	17.4%	8	34.8%	0	0.0%	0	0.0%	0	0.0%	0	0.0%	0	0.0%	0	0.0%	1	4.3%	0	0.0%	0	0.0%	0	0.0%	0	0.0%	0	0.0%	0	0.0%	1	4.3%		
	20th	6	0	0.0%	0	0.0%	1	16.7%	0	0.0%	0	0.0%	3	50.0%	0	0.0%	0	0.0%	0	0.0%	1	16.7%	0	0.0%	0	0.0%	0	0.0%	0	0.0%	0	0.0%	0	0.0%	1	16.7%		
Northeast Total		53	21	40%	4	8%	9	17.0%	0	0.0%	0	0.0%	4	7.5%	0	0.0%	0	0.0%	2	3.8%	8	15%	0	0.0%	0	0.0%	0	0.0%	0	0.0%	0	0.0%	0	0.0%	5	9%		
Southern																																						
	3rd	2	2	100.0%	0	0.0%	0	0.0%	0	0.0%	0	0.0%	0	0.0%	0	0.0%	0	0.0%	0	0.0%	0	0.0%	0	0.0%	0	0.0%	0	0.0%	0	0.0%	0	0.0%	0	0.0%	0	0.0%		
	4th	29	10	34.5%	2	6.9%	0	0.0%	0	0.0%	0	0.0%	0	0.0%	0	0.0%	0	0.0%	4	13.8%	7	24.1%	0	0.0%	0	0.0%	0	0.0%	1	3.4%	0	0.0%	5	17.2%				
	10th	8	2	25.0%	0	0.0%	0	0.0%	0	0.0%	0	0.0%	0	0.0%	0	0.0%	0	0.0%	1	12.5%	4	50.0%	0	0.0%	0	0.0%	0	0.0%	0	0.0%	0	0.0%	0	0.0%	1	12.5%		
	11th	3	2	66.7%	0	0.0%	0	0.0%	0	0.0%	0	0.0%	1	33.3%	0	0.0%	0	0.0%	0	0.0%	0	0.0%	0	0.0%	0	0.0%	0	0.0%	0	0.0%	0	0.0%	0	0.0%	0	0.0%		
	12th	0	0	0.0%	0	0.0%	0	0.0%	0	0.0%	0	0.0%	0	0.0%	0	0.0%	0	0.0%	0	0.0%	0	0.0%	0	0.0%	0	0.0%	0	0.0%	0	0.0%	0	0.0%	0	0.0%	0	0.0%		
	15th	2	0	0.0%	1	50.0%	0	0.0%	0	0.0%	0	0.0%	0	0.0%	0	0.0%	0	0.0%	0	0.0%	1	50.0%	0	0.0%	0	0.0%	0	0.0%	0	0.0%	0	0.0%	0	0.0%	0	0.0%		
	16th	0	0	0.0%	0	0.0%	0	0.0%	0	0.0%	0	0.0%	0	0.0%	0	0.0%	0	0.0%	0	0.0%	0	0.0%	0	0.0%	0	0.0%	0	0.0%	0	0.0%	0	0.0%	0	0.0%	0	0.0%		
Southern Total		44	16	36%	3	7%	0	0.0%	0	0.0%	0	0.0%	1	2.3%	0	0.0%	0	0.0%	5	11%	12	27%	0	0.0%	0	0.0%	0	0.0%	0	0.0%	0	0.0%	1	2.3%	0	0.0%	6	14%
Western																																						
	6th	1	0	0.0%	0	0.0%	0	0.0%	0	0.0%	0	0.0%	0	0.0%	0	0.0%	0	0.0%	0	0.0%	0	0.0%	0	0.0%	0	0.0%	0	0.0%	0	0.0%	0	0.0%	0	0.0%	1	100%		
	7th	3	0	0.0%	0	0.0%	1	33.3%	1	33.3%	0	0.0%	0	0.0%	0	0.0%	0	0.0%	1	33.3%	0	0.0%	0	0.0%	0	0.0%	0	0.0%	0	0.0%	0	0.0%	0	0.0%	0	0%		
	9th	1	0	0.0%	0	0.0%	0	0.0%	0	0.0%	0	0.0%	0	0.0%	0	0.0%	0	0.0%	0	0.0%	1	100.0%	0	0.0%	0	0.0%	0	0.0%	0	0.0%	0	0.0%	0	0.0%	0	0%		
	14th	0	0	0.0%	0	0.0%	0	0.0%	0	0.0%	0	0.0%	0	0.0%	0	0.0%	0	0.0%	0	0.0%	0	0.0%	0	0.0%	0	0.0%	0	0.0%	0	0.0%	0	0.0%	0	0.0%	0	0%		
	21st	19	5	26.3%	1	5.3%	0	0.0%	0	0.0%	0	0.0%	0	0.0%	0	0.0%	0	0.0%	2	10.5%	9	47.4%	0	0.0%	0	0.0%	0	0.0%	0	0.0%	0	0.0%	0	0.0%	2	11%		
	22nd	0	0	0.0%	0	0.0%	0	0.0%	0	0.0%	0	0.0%	0	0.0%	0	0.0%	0	0.0%	0	0.0%	0	0.0%	0	0.0%	0	0.0%	0	0.0%	0	0.0%	0	0.0%	0	0.0%	0	0%		
Western Total		24	5	21%	1	4.2%	1	4.2%	1	4.2%	0	0.0%	0	0.0%	0	0.0%	0	0.0%	3	12.5%	10	42%	0	0.0%	0	0.0%	0	0.0%	0	0.0%	0	0.0%	0	0.0%	3	13%		
Individual RD Totals		208	76	37%	19	9%	10	4.8%	1	0.5%	0	0.0%	6	2.9%	0	0.0%	0	0.0%	18	9%	45	22%	2	1.0%	0	0.0%	0	0.0%	0	0.0%	0	0.0%	1	0.5%	1	0.5%	29	14%
Statewide Totals		208	95	45.7%	11	5.3%	6	2.9%	0	0.0%	0	0.0%	6	2.9%	0	0.0%	0	0.0%	63	30.3%	2	1.0%	0	0.0%	0	0.0%	0	0.0%	0	0.0%	2	1.0%	2	1.0%	29	14%		

Central Region

CYDC Reason Detained by Judicial District

October 2020 New Admits



■ CENTRAL REGION, 87 New Admits

■ 5th JD, 2 New Admits

■ 18th JD, 35 New Admits

■ 1st JD, 15 New Admits

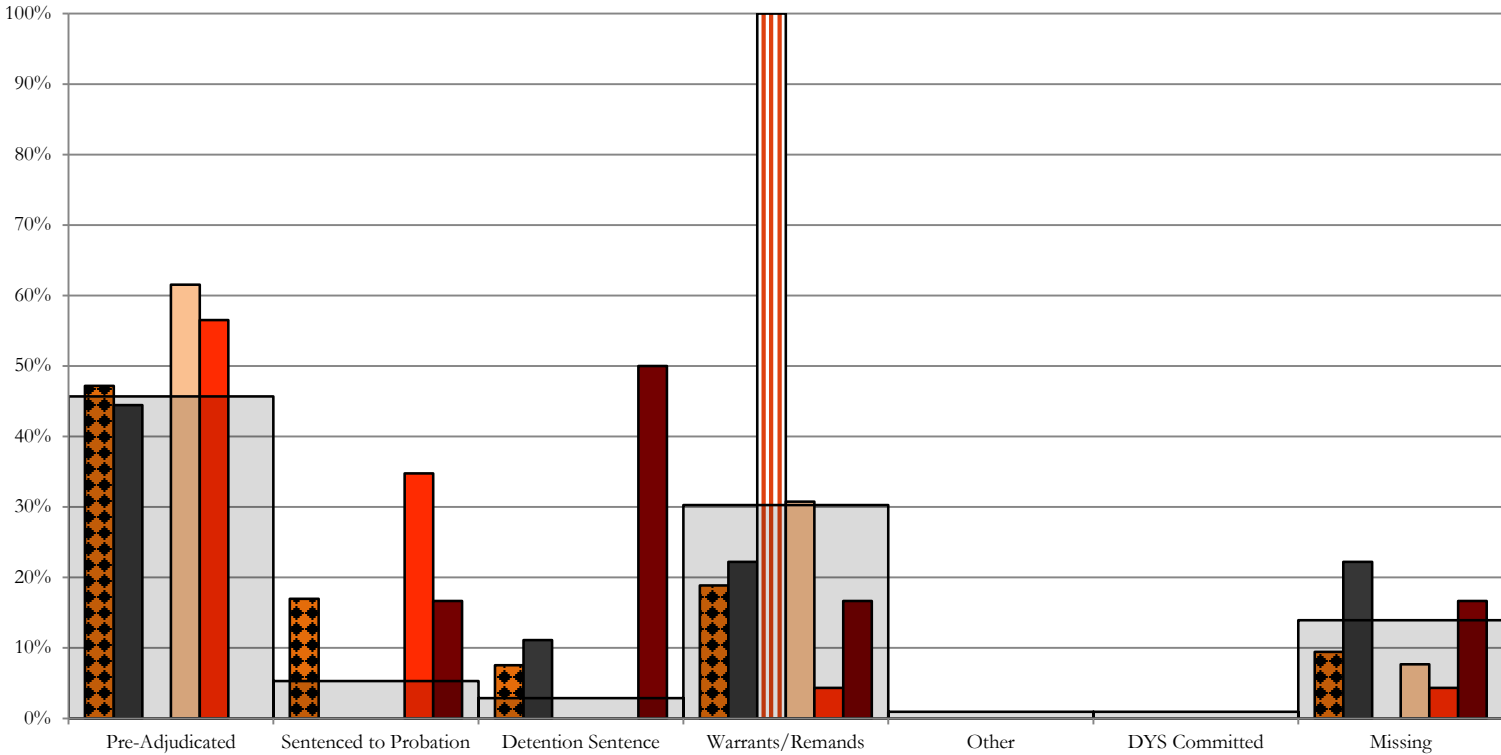
■ 2nd JD, 35 New Admits

■ STATEWIDE, 208 New Admits

Northeast Region

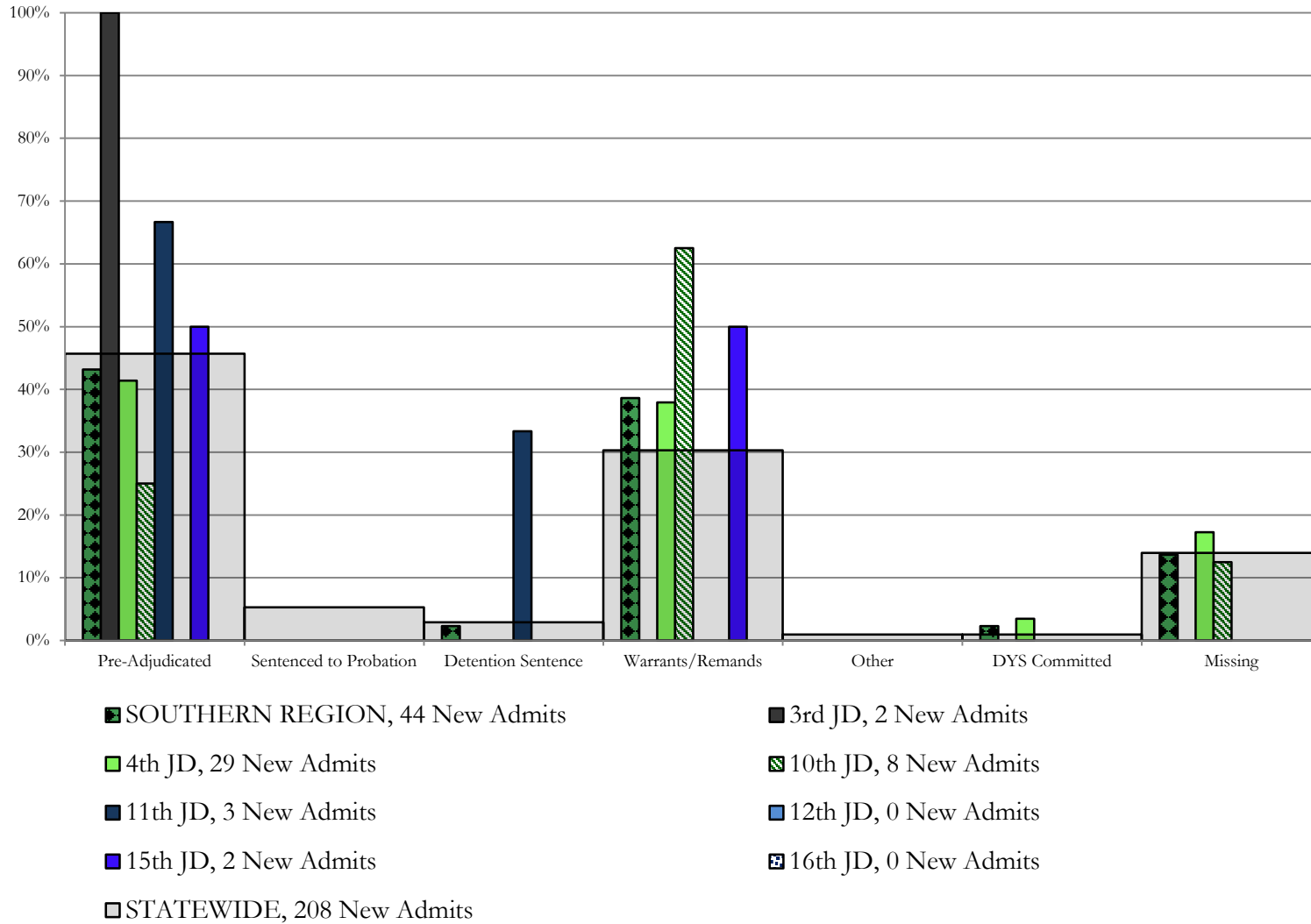
CYDC Reason Detained by Judicial District

October 2020 New Admits



- NORTHEAST REGION, 53 New Admits
- 8th JD, 9 New Admits
- 13th JD, 2 New Admits
- 17th JD, 13 New Admits
- 19th JD, 23 New Admits
- 20th JD, 6 New Admits
- STATEWIDE, 208 New Admits

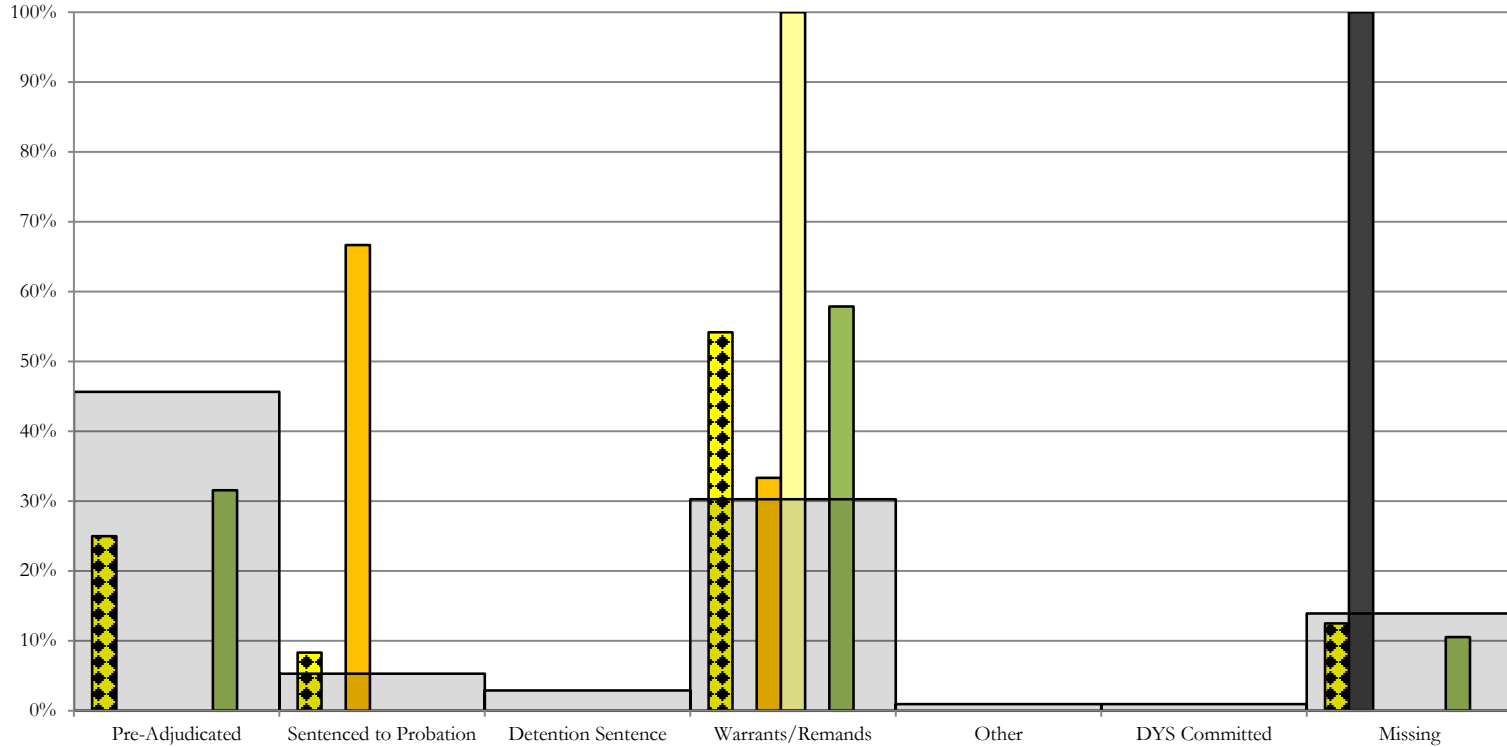
Southern Region CYDC Reason Detained by Judicial District October 2020 New Admits



Western Region

CYDC Reason Detained by Judicial District

October 2020 New Admits



- WESTERN REGION, 24 New Admits
- 7th JD, 3 New Admits
- 14th JD, 0 New Admits
- 22nd JD, 0 New Admits
- 6th JD, 1 New Admits
- 9th JD, 1 New Admits
- 21st JD, 19 New Admits
- STATEWIDE, 208 New Admits

October 2020 CYDC Supplemental Report

DYS Detention Maximum Youth Served by Judicial District¹

Region	JD	Detention Capacity	Detention ADP		Maximum Youth Served on a Single Day ^{2,3}			
			October 2020	YTD	October 2020		YTD	
					Number of Youth	% of Detention Capacity	Number of Youth	% of Detention Capacity
<i>Central</i>								
	1st	35	13.0	12.5	17	48.6%	17	48.6%
	2nd	49	31.5	28.6	32	65.3%	32	65.3%
	5th	4	0.5	0.3	1	25.0%	1	25.0%
	18th	48	24.1	24.6	22	45.8%	42	87.5%
Central Region		136	69.1	66.0	65	47.8%	81	59.6%
<i>Northeast</i>								
	8th	14	6.4	4.5	7	50.0%	8	57.1%
	13th	5	0.6	1.5	4	80.0%	4	80.0%
	17th	28	16.2	13.6	17	60.7%	17	60.7%
	19th	18	11.5	10.0	12	66.7%	15	83.3%
	20th	8	1.5	2.2	6	75.0%	6	75.0%
Northeast Region		73	36.2	31.8	41	56.2%	41	56.2%
<i>Southern</i>								
	3rd	2	2.1	1.3	2	100.0%	2	100.0%
	4th	54	34.0	35.7	7	13.0%	14	25.9%
	10th	14	4.3	3.6	5	35.7%	7	50.0%
	11th	3	0.8	1.2	3	100.0%	3	100.0%
	12th	4	0.0	0.3	0	0.0%	2	50.0%
	15th	2	1.1	0.5	1	50.0%	1	50.0%
	16th	3	1.0	0.5	2	66.7%	2	66.7%
Southern Region		82	43.4	43.1	15	18.3%	21	25.6%
<i>Western</i>								
	6th	5	1.5	1.5	3	60.0%	3	60.0%
	7th	5	2.9	1.3	2	40.0%	2	40.0%
	9th	3	1.4	0.7	2	66.7%	2	66.7%
	14th	3	0.0	0.0	1	33.3%	1	33.3%
	21st	16	5.8	6.4	11	68.8%	11	68.8%
	22nd	4	0.0	0.3	0	0.0%	2	50.0%
Western Region		36	11.6	10.2	15	41.7%	15	41.7%
<i>Missing JD or Multiple JDs</i>			0.9	0.6				
Statewide		327	161.2	151.6	150	45.9%	137	41.9%

¹ Maximum youth served is the highest number of youth in detention on a single day during the month or fiscal year.

² Regional figures are not the sum of judicial districts, but represent the maximum count on one day for the entire region.

³ State figures are not the sum of regional figures, but represent the maximum count on one day for the entire state.

October 2020 CYDC Supplemental Report

CYDC Community ADP by Judicial District

Region	JD	Committed		Diversion		ICJ		Municipal		Pre-Adjudicated		Sentenced		VCO		Total	
		October 2020	YTD	October 2020	YTD	October 2020	YTD	October 2020	YTD	October 2020	YTD	October 2020	YTD	October 2020	YTD	October 2020	YTD
<i>Central</i>																	
	1st	1.5	1.9	0.0	0.0	0.0	0.0	14.3	15.1	86.7	83.8	14.1	14.6	0.0	0.0	116.6	115.5
	2nd	0.2	0.9	0.4	0.9	0.1	0.0	0.0	0.0	108.5	113.5	36.1	35.1	0.0	0.0	145.3	150.4
	5th	0.0	0.0	6.0	6.0	0.0	0.0	0.0	0.0	8.4	7.5	31.0	31.0	0.0	0.0	45.4	44.5
	18th	0.1	0.0	1.0	1.6	0.0	0.2	1.0	1.0	242.0	249.0	25.7	26.6	0.0	0.0	269.7	278.4
Central Total		1.8	2.8	7.4	8.4	0.1	0.2	15.3	16.1	445.6	453.8	106.8	107.4	0.0	0.0	577.0	588.7
<i>Northeast</i>																	
	8th	0.0	0.0	7.2	7.1	0.0	0.0	0.0	0.0	88.5	79.8	55.2	51.2	0.0	0.0	151.0	138.2
	13th	0.0	0.0	0.0	0.0	0.0	0.0	14.0	14.0	10.0	11.7	2.6	1.8	2.0	1.5	28.7	29.0
	17th	0.0	0.0	0.0	0.0	0.0	0.0	0.0	0.0	158.6	148.5	17.0	15.7	0.0	0.0	175.6	164.2
	19th	1.1	1.6	1.1	0.3	0.0	0.0	0.0	0.0	54.7	59.2	19.3	16.9	0.0	0.0	76.2	78.0
	20th	0.0	0.0	42.7	54.2	2.0	1.7	0.6	0.6	67.8	55.2	5.6	3.9	0.0	0.0	118.7	115.5
Northeast Total		1.1	1.6	51.0	61.5	2.0	1.7	14.6	14.6	379.7	354.4	99.8	89.4	2.0	1.5	550.2	524.8
<i>Southern</i>																	
	3rd	0.0	0.0	0.0	0.0	0.0	0.0	0.0	0.0	12.0	11.3	1.4	1.1	0.0	0.0	13.4	12.4
	4th	0.0	0.2	0.0	0.0	0.0	0.0	61.0	61.0	151.0	140.4	39.5	37.7	0.0	0.0	251.5	239.3
	10th	0.0	0.3	0.0	0.0	0.0	0.0	0.0	0.0	16.2	16.2	4.5	5.6	0.0	0.0	20.6	22.1
	11th	0.0	0.0	0.0	0.0	0.0	0.0	11.0	11.0	24.2	21.4	9.0	7.7	0.0	0.0	44.2	40.1
	12th	0.0	0.0	4.9	3.2	0.0	0.0	3.0	2.4	8.8	9.5	1.1	1.0	0.0	0.0	17.8	16.2
	15th	0.0	0.0	1.0	1.0	0.0	0.0	0.0	0.0	6.0	5.8	9.7	9.9	0.0	0.0	16.7	16.8
	16th	0.0	0.0	0.0	0.0	0.0	0.0	0.0	0.0	8.0	8.0	1.0	1.0	28.0	29.8	37.0	38.8
Southern Total		0.0	0.5	5.9	4.2	0.0	0.0	75.0	74.4	226.2	212.6	66.0	64.1	28.0	29.8	401.2	385.6
<i>Western</i>																	
	6th	0.0	0.0	0.0	0.0	0.0	0.0	0.0	0.0	5.2	5.2	1.0	0.9	0.0	0.0	6.2	6.2
	7th	0.0	0.0	10.1	7.7	0.0	0.0	1.0	0.8	9.5	9.8	7.6	6.6	0.0	0.0	28.2	24.9
	9th	0.0	0.0	1.3	3.7	0.0	0.0	7.0	9.8	5.6	5.8	1.0	0.4	0.0	0.0	14.9	19.7
	14th	0.0	0.0	2.0	2.0	0.0	0.0	1.0	1.0	4.0	3.4	1.0	1.0	0.0	0.0	8.0	7.4
	21st	1.5	1.1	0.0	0.2	0.0	0.0	0.0	0.0	45.7	41.0	28.3	25.8	0.0	0.0	75.6	68.2
	22nd	0.0	0.0	0.0	0.0	0.0	0.0	0.0	0.0	6.7	9.5	5.0	5.1	0.0	0.0	11.7	14.6
Western Total		1.5	1.2	13.4	13.6	0.0	0.0	9.0	11.6	76.7	74.7	43.8	39.8	0.0	0.0	144.4	140.9
Statewide Total		4.4	6.0	77.6	87.8	2.1	1.9	114.0	116.8	1,128.2	1,095.5	316.5	300.7	30.0	31.4	1,672.8	1,639.9