

August 2020*

FY 2020-2021

CYDC JDSAG SUPPLEMENTAL REPORT

Prepared by the Division of Youth Services (DYS)

Data Management & Analysis

September 25, 2020

* Following the initial announcement of positive cases of COVID-19 in Colorado on March 5th, data presented in this report largely reflect COVID-19 response and Executive Order (EO) compliance across the detained, committed, and paroled populations. The statewide detention bed availability was temporarily reduced to 200 effective April 21, 2020 COB; DYS plans to return to official allocations (327) and bed borrowing practices upon expiration of the EO. Due to the temporary nature of the reduction, DYS continues to utilize official detention bed allocations within this report. Commitment population reductions and Parole population increases are a direct result of the Division's EO response, releasing an unprecedented number of youth from residential placement to parole.



COLORADO

Division of Youth Services

Office of Children, Youth & Families

August 2020 CYDC Supplemental Report

DYS Commitment ADP & New Commitments by Judicial District

Region	JD ¹	2021 Population Estimates ²	ADP ³		New Commitments		
			August 2020	YTD	August 2020	YTD	YTD Rate ⁴
<i>Central</i>							
	1st	54,247	40.8	40.4	2	2	0.4
	2nd	57,556	62.1	62.8	1	2	0.3
	5th	9,148	2.4	2.2	0	0	0.0
	18th	114,514	66.4	66.7	3	6	0.5
Central Total		235,465	171.8	172.1	6	10	0.4
<i>Northeast</i>							
	8th	35,120	15.9	15.7	1	2	0.6
	13th	8,520	2.5	2.6	0	1	1.2
	17th	69,653	32.3	32.2	0	0	0.0
	19th	39,126	30.4	29.5	4	8	2.0
	20th	30,663	4.0	4.0	0	0	0.0
Northeast Total		183,082	85.0	83.9	5	11	0.6
<i>Southern</i>							
	3rd	1,875	3.0	3.0	0	0	0.0
	4th	84,107	57.7	57.1	4	5	0.6
	10th	17,817	7.3	8.0	0	0	0.0
	11th	7,367	4.0	3.9	0	1	1.4
	12th	5,455	0.4	0.2	0	0	0.0
	15th	2,111	3.9	3.9	0	0	0.0
	16th	2,836	1.2	1.1	0	0	0.0
Southern Total		121,568	77.6	77.2	4	6	0.5
<i>Western</i>							
	6th	7,430	1.0	1.3	0	0	0.0
	7th	10,673	1.0	1.4	0	0	0.0
	9th	8,519	2.0	2.0	0	0	0.0
	14th	5,788	0.0	0.0	0	0	0.0
	21st	16,466	27.4	27.6	0	0	0.0
	22nd	3,034	4.3	4.2	0	0	0.0
Western Total		51,910	35.7	36.4	0	0	0.0
Statewide Total		592,025	370.0	369.6	15	27	0.5

¹ JD represents the judicial district in which the client was committed. Regional totals are a sum of their respective judicial districts. Regional totals reported here may differ slightly from those reported in the Monthly Population Report, where region is defined by active caseloads.

² Source: DOLA 2021 Estimates.

³ Due to rounding, totals shown may not be an exact sum of the subtotals.

⁴ Per 10,000 youth in the population.

August 2020 CYDC Supplemental Report

DYS Detention ADP and New Detention Admissions by Judicial District

Region	JD	2021 Population Estimates ¹	ADP		New Admits		
			August 2020	YTD	August 2020	YTD	YTD New Admit Rate ²
<i>Central</i>							
	1st	54,247	11.3	11.7	15	29	5.3
	2nd	57,556	28.1	27.6	28	58	10.1
	5th	9,148	0.0	0.3	0	1	1.1
	18th	114,514	23.8	28.4	30	57	5.0
Central Total		235,465	63.3	68.0	73	145	6.2
<i>Northeast</i>							
	8th	35,120	3.5	4.5	4	11	3.1
	13th	8,520	1.3	1.5	3	6	7.0
	17th	69,653	11.7	11.8	16	32	4.6
	19th	39,126	10.2	9.4	29	45	11.5
	20th	30,663	1.2	1.9	5	8	2.6
Northeast Total		183,082	28.0	29.2	57	102	5.6
<i>Southern</i>							
	3rd	1,875	1.0	1.0	0	0	0.0
	4th	84,107	37.8	36.7	49	99	11.8
	10th	17,817	4.1	3.4	9	19	10.7
	11th	7,367	1.3	1.4	2	5	6.8
	12th	5,455	0.1	0.7	1	2	3.7
	15th	2,111	0.3	0.1	2	2	9.5
	16th	2,836	0.0	0.1	1	2	7.1
Southern Total		121,568	44.6	43.3	64	129	10.6
<i>Western</i>							
	6th	7,430	1.9	1.5	2	4	5.4
	7th	10,673	0.7	0.7	1	3	2.8
	9th	8,519	0.1	0.2	0	1	1.2
	14th	5,788	0.0	0.0	0	0	0.0
	21st	16,466	6.7	6.1	19	35	21.3
	22nd	3,034	0.9	0.6	1	3	9.9
Western Total		51,910	10.3	9.1	23	46	8.9
<i>Missing JD or Multiple JDs</i>			<i>0.0</i>	<i>0.1</i>			
Statewide Total		592,025	146.2	149.7	217	422	7.1

¹ Source: DOLA 2021 Estimates.

² Per 10,000 youth in the population.

August 2020 CYDC Supplemental Report

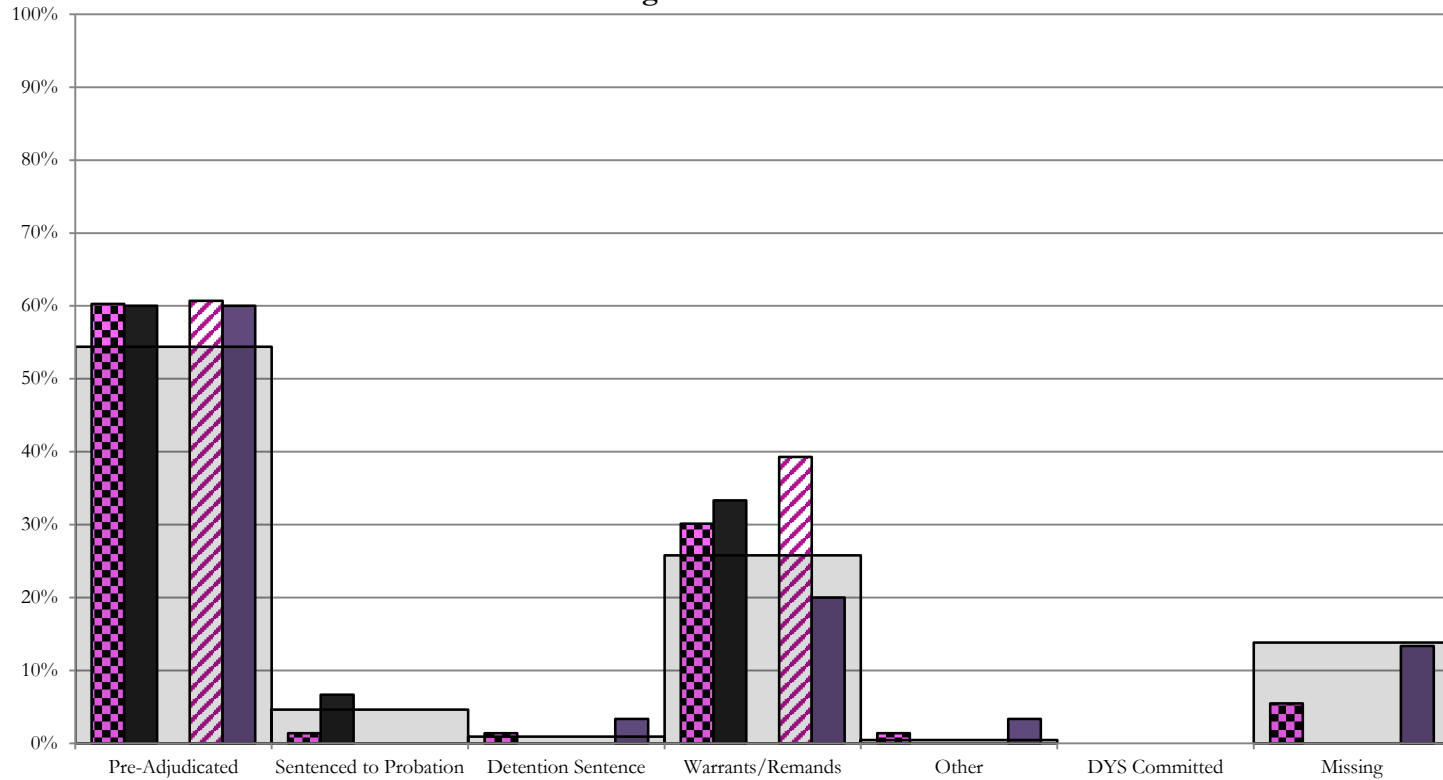
DYS Detention LOS by Judicial District				
Region	JD	YTD Detention Releases	YTD LOS (days)	LOS (days) Compared to State AVG
<i>Central</i>				
	1st	26	18.3	-0.6
	2nd	53	14.1	-4.7
	5th	2	72.7	53.8
	18th	75	35.6	16.7
Central Total		156	25.9	7.0
<i>Northeast</i>				
	8th	11	22.3	3.4
	13th	5	23.4	4.5
	17th	35	6.3	-12.6
	19th	39	7.3	-11.6
	20th	9	23.1	4.2
Northeast Total		99	10.9	-8.0
<i>Southern</i>				
	3rd	0	0.0	-18.9
	4th	99	12.9	-6.0
	10th	16	3.5	-15.4
	11th	4	15.5	-3.4
	12th	3	110.5	91.7
	15th	1	1.0	-17.9
	16th	2	1.5	-17.3
Southern Total		125	13.9	-5.0
<i>Western</i>				
	6th	2	1.0	-17.9
	7th	4	9.9	-9.0
	9th	2	30.6	11.7
	14th	0	0.0	-18.9
	21st	28	9.2	-9.7
	22nd	4	7.1	-11.8
Western Total		40	9.7	-9.1
Statewide Total		420	18.9	-

August 2020 CDYC Supplemental Report

CYDC Reason Detained (RD) by Judicial District

Region	JD	Monthly New Admits	Pre-Adjudicated				Sentenced to Probation				Detention Sentence								Warrants/Remands				Other						DYS Committed		Missing							
			Felony		Misdemeanor		Technical Violator		New Charges		Probation Sentence		Detention Sentence		Valid Court Order (VCO) Truancy		Awaiting DSS (Social Services) Placement		Failure to Appear (FTA)		Failure to Comply (FTC)		Interstate Compact on Juveniles (ICJ) Hold		Immigration Hold		No Bond Hold		Out-of-Country Warrant		Institutional		Parole		Missing			
			#	%	#	%	#	%	#	%	#	%	#	%	#	%	#	%	#	%	#	%	#	%	#	%	#	%	#	%	#	%	#	%	#	%		
<i>Central</i>																																						
	1st	15	8	53.3%	1	6.7%	1	6.7%	0	0.0%	0	0.0%	0	0.0%	0	0.0%	0	0.0%	2	13.3%	3	20.0%	0	0.0%	0	0.0%	0	0.0%	0	0.0%	0	0.0%	0	0.0%	0	0.0%	0	0.0%
	2nd	28	13	46.4%	4	14.3%	0	0.0%	0	0.0%	0	0.0%	0	0.0%	0	0.0%	0	0.0%	3	10.7%	8	28.6%	0	0.0%	0	0.0%	0	0.0%	0	0.0%	0	0.0%	0	0.0%	0	0.0%	0	0.0%
	5th	0	0	0.0%	0	0.0%	0	0.0%	0	0.0%	0	0.0%	0	0.0%	0	0.0%	0	0.0%	0	0.0%	0	0.0%	0	0.0%	0	0.0%	0	0.0%	0	0.0%	0	0.0%	0	0.0%	0	0.0%	0	0.0%
	18th	30	12	40.0%	6	20.0%	0	0.0%	0	0.0%	0	0.0%	1	3.3%	0	0.0%	0	0.0%	1	3.3%	5	16.7%	1	3.3%	0	0.0%	0	0.0%	0	0.0%	0	0.0%	0	0.0%	0	0.0%	4	13.3%
Central Total		73	33	45%	11	15%	1	1.4%	0	0.0%	0	0.0%	1	1.4%	0	0.0%	0	0.0%	6	8%	16	22%	1	1.4%	0	0.0%	0	0.0%	0	0.0%	0	0.0%	0	0.0%	0	0.0%	4	5.5%
<i>Northeast</i>																																						
	8th	4	2	50.0%	0	0.0%	0	0.0%	0	0.0%	0	0.0%	0	0.0%	0	0.0%	0	0.0%	0	0.0%	0	0.0%	0	0.0%	0	0.0%	0	0.0%	0	0.0%	0	0.0%	0	0.0%	0	0.0%	2	50.0%
	13th	3	1	33.3%	0	0.0%	0	0.0%	0	0.0%	0	0.0%	0	0.0%	0	0.0%	0	0.0%	2	66.7%	0	0.0%	0	0.0%	0	0.0%	0	0.0%	0	0.0%	0	0.0%	0	0.0%	0	0.0%	0	0.0%
	17th	16	11	68.8%	3	18.8%	0	0.0%	0	0.0%	0	0.0%	0	0.0%	0	0.0%	0	0.0%	1	6.3%	0	0.0%	0	0.0%	0	0.0%	0	0.0%	0	0.0%	0	0.0%	0	0.0%	1	6.3%	0	0.0%
	19th	29	8	27.6%	7	24.1%	9	31.0%	0	0.0%	0	0.0%	0	0.0%	0	0.0%	0	0.0%	5	17.2%	0	0.0%	0	0.0%	0	0.0%	0	0.0%	0	0.0%	0	0.0%	0	0.0%	0	0.0%	0	0.0%
	20th	5	1	20.0%	1	20.0%	0	0.0%	0	0.0%	0	0.0%	0	0.0%	0	0.0%	0	0.0%	3	60.0%	0	0.0%	0	0.0%	0	0.0%	0	0.0%	0	0.0%	0	0.0%	0	0.0%	0	0.0%	0	0.0%
Northeast Total		57	23	40%	11	19%	9	15.8%	0	0.0%	0	0.0%	0	0.0%	0	0.0%	0	0.0%	11	19%	0	0.0%	0	0.0%	0	0.0%	0	0.0%	0	0.0%	0	0.0%	0	0.0%	3	5%		
<i>Southern</i>																																						
	3rd	0	0	0.0%	0	0.0%	0	0.0%	0	0.0%	0	0.0%	0	0.0%	0	0.0%	0	0.0%	0	0.0%	0	0.0%	0	0.0%	0	0.0%	0	0.0%	0	0.0%	0	0.0%	0	0.0%	0	0.0%	0	0.0%
	4th	49	19	38.8%	2	4.1%	0	0.0%	0	0.0%	0	0.0%	1	2.0%	0	0.0%	0	0.0%	1	2.0%	8	16.3%	0	0.0%	0	0.0%	0	0.0%	0	0.0%	0	0.0%	0	0.0%	0	0.0%	18	36.7%
	10th	9	5	55.6%	0	0.0%	0	0.0%	0	0.0%	0	0.0%	0	0.0%	0	0.0%	0	0.0%	1	11.1%	3	33.3%	0	0.0%	0	0.0%	0	0.0%	0	0.0%	0	0.0%	0	0.0%	0	0.0%	0	0.0%
	11th	2	1	50.0%	1	50.0%	0	0.0%	0	0.0%	0	0.0%	0	0.0%	0	0.0%	0	0.0%	0	0.0%	0	0.0%	0	0.0%	0	0.0%	0	0.0%	0	0.0%	0	0.0%	0	0.0%	0	0.0%	0	0.0%
	12th	1	0	0.0%	0	0.0%	0	0.0%	0	0.0%	0	0.0%	0	0.0%	0	0.0%	0	0.0%	1	100.0%	0	0.0%	0	0.0%	0	0.0%	0	0.0%	0	0.0%	0	0.0%	0	0.0%	0	0.0%	0	0.0%
	15th	2	1	50.0%	1	50.0%	0	0.0%	0	0.0%	0	0.0%	0	0.0%	0	0.0%	0	0.0%	0	0.0%	0	0.0%	0	0.0%	0	0.0%	0	0.0%	0	0.0%	0	0.0%	0	0.0%	0	0.0%	0	0.0%
	16th	1	0	0.0%	0	0.0%	0	0.0%	0	0.0%	0	0.0%	0	0.0%	0	0.0%	0	0.0%	1	100.0%	0	0.0%	0	0.0%	0	0.0%	0	0.0%	0	0.0%	0	0.0%	0	0.0%	0	0.0%	0	0.0%
Southern Total		64	26	41%	4	6%	0	0.0%	0	0.0%	0	0.0%	1	1.6%	0	0.0%	0	0.0%	3	5%	12	19%	0	0.0%	0	0.0%	0	0.0%	0	0.0%	0	0.0%	0	0.0%	0	0.0%	18	28%
<i>Western</i>																																						
	6th	2	0	0.0%	0	0.0%	0	0.0%	0	0.0%	0	0.0%	0	0.0%	0	0.0%	0	0.0%	0	0.0%	0	0.0%	0	0.0%	0	0.0%	0	0.0%	0	0.0%	0	0.0%	0	0.0%	0	0.0%	2	100%
	7th	1	1	100.0%	0	0.0%	0	0.0%	0	0.0%	0	0.0%	0	0.0%	0	0.0%	0	0.0%	0	0.0%	0	0.0%	0	0.0%	0	0.0%	0	0.0%	0	0.0%	0	0.0%	0	0.0%	0	0.0%	0	0%
	9th	0	0	0.0%	0	0.0%	0	0.0%	0	0.0%	0	0.0%	0	0.0%	0	0.0%	0	0.0%	0	0.0%	0	0.0%	0	0.0%	0	0.0%	0	0.0%	0	0.0%	0	0.0%	0	0.0%	0	0.0%	0	0%
	14th	0	0	0.0%	0	0.0%	0	0.0%	0	0.0%	0	0.0%	0	0.0%	0	0.0%	0	0.0%	0	0.0%	0	0.0%	0	0.0%	0	0.0%	0	0.0%	0	0.0%	0	0.0%	0	0.0%	0	0.0%	0	0%
	21st	19	5	26.3%	3	15.8%	0	0.0%	0	0.0%	0	0.0%	0	0.0%	0	0.0%	0	0.0%	1	5.3%	7	36.8%	0	0.0%	0	0.0%	0	0.0%	0	0.0%	0	0.0%	0	0.0%	3	16%	0	0%
	22nd	1	1	100.0%	0	0.0%	0	0.0%	0	0.0%	0	0.0%	0	0.0%	0	0.0%	0	0.0%	0	0.0%	0	0.0%	0	0.0%	0	0.0%	0	0.0%	0	0.0%	0	0.0%	0	0.0%	0	0.0%	0	0%
Western Total		23	7	30%	3	13.0%	0	0.0%	0	0.0%	0	0.0%	0	0.0%	0	0.0%	0	0.0%	1	4.3%	7	30%	0	0.0%	0	0.0%	0	0.0%	0	0.0%	0	0.0%	0	0.0%	5	22%		
Individual RD Totals		217	89	41%	29	13%	10	4.6%	0	0.0%	0	0.0%	2	0.9%	0	0.0%	0	0.0%	10	5%	46	21%	1	0.5%	0	0.0%	0	0.0%	0	0.0%	0	0.0%	0	0.0%	0	0.0%	30	14%
Statewide Totals		217	118	54.4%	10	4.6%	0	0.0%	0	0.0%	2	0.9%	0	0.0%	0	0.0%	0	0.0%	56	25.8%	1	0.5%	0	0.0%	0	0.0%	0	0.0%	0	0.0%	0	0.0%	0	0.0%	30	14%		

Central Region CYDC Reason Detained by Judicial District August 2020 New Admits



■ CENTRAL REGION, 73 New Admits

■ 5th JD, 0 New Admits

■ 18th JD, 30 New Admits

■ 1st JD, 15 New Admits

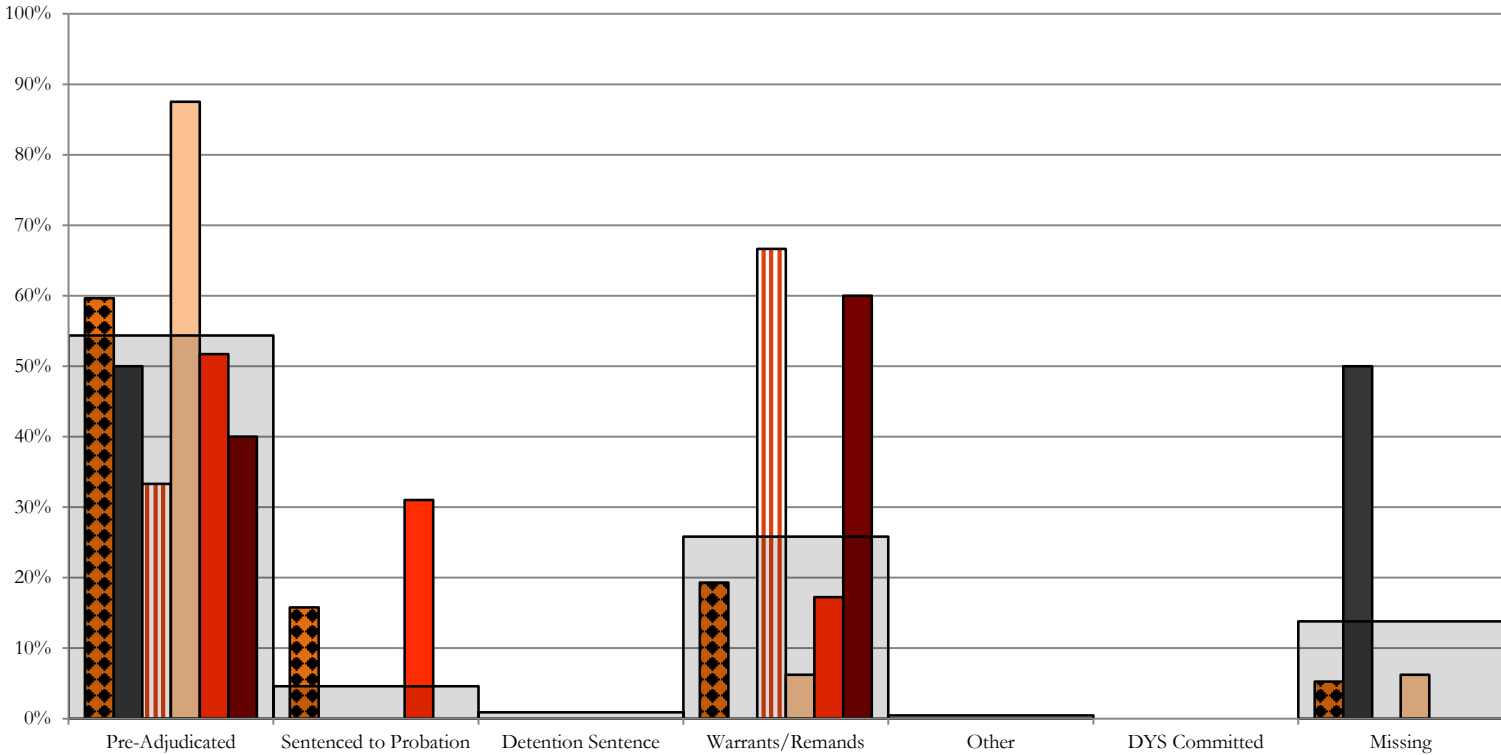
■ 2nd JD, 28 New Admits

■ STATEWIDE, 217 New Admits

Northeast Region

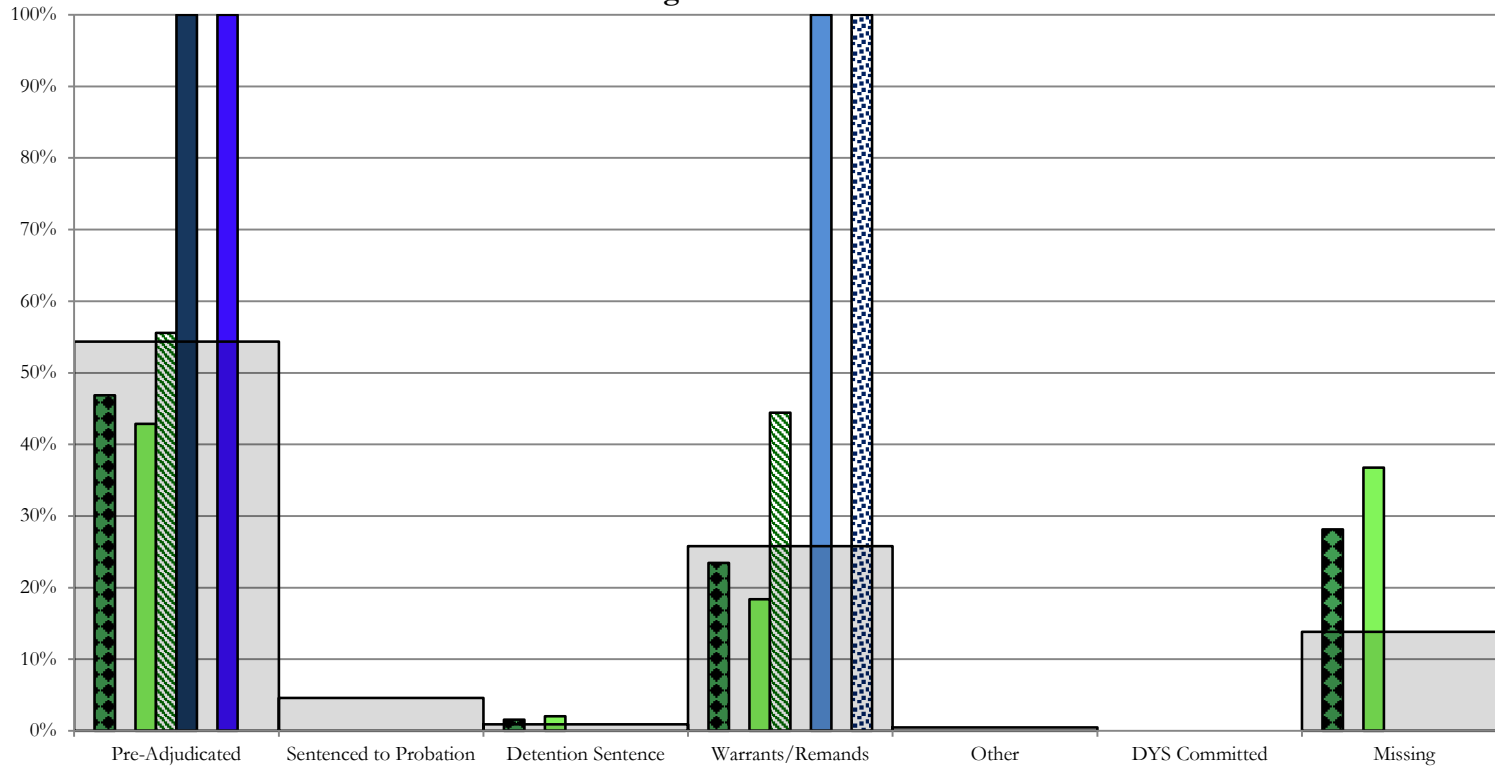
CYDC Reason Detained by Judicial District

August 2020 New Admits



- NORTHEAST REGION, 57 New Admits
- 8th JD, 4 New Admits
- 13th JD, 3 New Admits
- 17th JD, 16 New Admits
- 19th JD, 29 New Admits
- 20th JD, 5 New Admits
- STATEWIDE, 217 New Admits

Southern Region CYDC Reason Detained by Judicial District August 2020 New Admits



■ SOUTHERN REGION, 64 New Admits

■ 4th JD, 49 New Admits

■ 11th JD, 2 New Admits

■ 15th JD, 2 New Admits

■ STATEWIDE, 217 New Admits

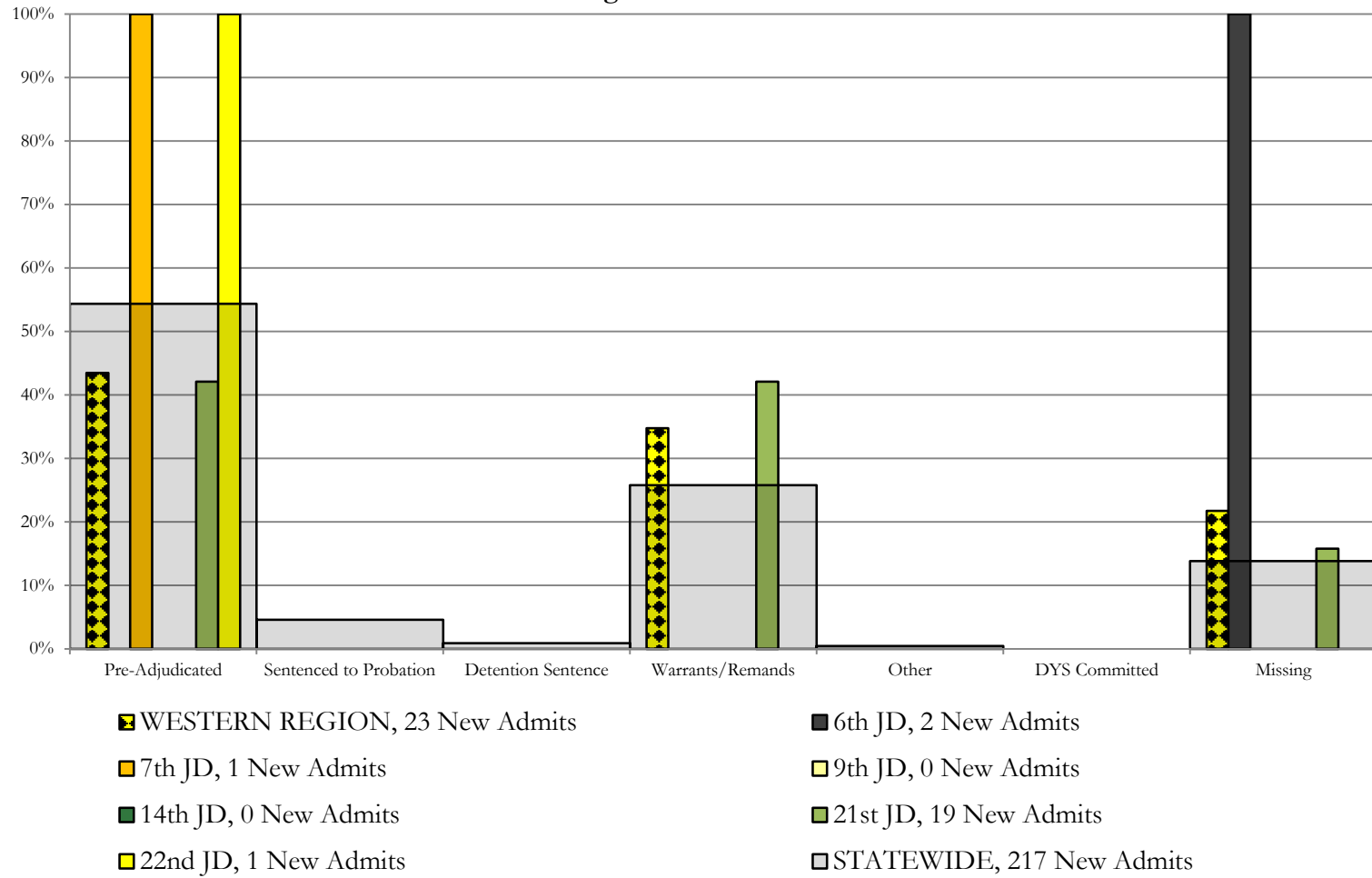
■ 3rd JD, 0 New Admits

■ 10th JD, 9 New Admits

■ 12th JD, 1 New Admits

■ 16th JD, 1 New Admits

Western Region CYDC Reason Detained by Judicial District August 2020 New Admits



August 2020 CYDC Supplemental Report

DYS Detention Maximum Youth Served by Judicial District¹

Region	JD	Detention Capacity	Detention ADP		Maximum Youth Served on a Single Day ^{2,3}			
			August 2020	YTD	August 2020		YTD	
					Number of Youth	% of Detention Capacity	Number of Youth	% of Detention Capacity
<i>Central</i>								
	1st	35	11.3	11.7	14	40.0%	15	42.9%
	2nd	49	28.1	27.6	31	63.3%	32	65.3%
	5th	4	0.0	0.3	0	0.0%	1	25.0%
	18th	48	23.8	28.4	27	56.3%	42	87.5%
Central Region		136	63.3	68.0	69	50.7%	81	59.6%
<i>Northeast</i>								
	8th	14	3.5	4.5	5	35.7%	8	57.1%
	13th	5	1.3	1.5	3	60.0%	3	60.0%
	17th	28	11.7	11.8	15	53.6%	16	57.1%
	19th	18	10.2	9.4	15	83.3%	15	83.3%
	20th	8	1.2	1.9	3	37.5%	4	50.0%
Northeast Region		73	28.0	29.2	35	47.9%	39	53.4%
<i>Southern</i>								
	3rd	2	1.0	1.0	1	50.0%	1	50.0%
	4th	54	37.8	36.7	14	25.9%	14	25.9%
	10th	14	4.1	3.4	7	50.0%	7	50.0%
	11th	3	1.3	1.4	2	66.7%	2	66.7%
	12th	4	0.1	0.7	1	25.0%	2	50.0%
	15th	2	0.3	0.1	1	50.0%	1	50.0%
	16th	3	0.0	0.1	1	33.3%	1	33.3%
Southern Region		82	44.6	43.3	21	25.6%	21	25.6%
<i>Western</i>								
	6th	5	1.9	1.5	3	60.0%	3	60.0%
	7th	5	0.7	0.7	2	40.0%	2	40.0%
	9th	3	0.1	0.2	1	33.3%	1	33.3%
	14th	3	0.0	0.0	0	0.0%	0	0.0%
	21st	16	6.7	6.1	11	68.8%	11	68.8%
	22nd	4	0.9	0.6	2	50.0%	2	50.0%
Western Region		36	10.3	9.1	14	38.9%	14	38.9%
<i>Missing JD or Multiple JDs</i>			0.0	0.1				
Statewide		327	146.2	149.7	134	41.0%	137	41.9%

¹ Maximum youth served is the highest number of youth in detention on a single day during the month or fiscal year.

² Regional figures are not the sum of judicial districts, but represent the maximum count on one day for the entire region.

³ State figures are not the sum of regional figures, but represent the maximum count on one day for the entire state.

August 2020 CYDC Supplemental Report

CYDC Community ADP by Judicial District

Region	JD	Committed		Diversion		ICJ		Municipal		Pre-Adjudicated		Sentenced		VCO		Total	
		August 2020	YTD	August 2020	YTD	August 2020	YTD	August 2020	YTD	August 2020	YTD	August 2020	YTD	August 2020	YTD	August 2020	YTD
<i>Central</i>																	
	1st	2.0	2.0	0.0	0.0	0.0	0.0	18.9	17.9	200.1	197.7	30.5	29.9	0.0	0.0	251.4	247.5
	2nd	3.6	2.4	1.5	1.3	1.0	0.6	0.0	0.0	161.9	151.3	38.3	39.8	0.0	0.0	206.3	195.3
	5th	0.0	0.0	6.0	6.0	0.0	0.0	0.0	0.0	7.0	7.0	31.0	31.0	0.0	0.0	44.0	44.0
	18th	0.0	0.0	2.0	2.0	0.1	0.2	1.0	1.0	250.2	258.1	29.8	30.6	0.0	0.0	283.1	292.0
Central Total		5.6	4.4	9.5	9.3	1.1	0.8	19.9	18.9	619.2	614.0	129.5	131.3	0.0	0.0	784.8	778.8
<i>Northeast</i>																	
	8th	0.0	0.0	6.0	5.9	0.0	0.0	0.0	0.0	83.7	82.4	45.0	44.5	0.0	0.0	134.7	132.8
	13th	0.0	0.0	0.0	0.0	0.0	0.0	14.0	14.0	11.5	13.2	1.4	1.2	1.2	1.1	28.1	29.5
	17th	1.0	1.0	0.0	0.0	0.0	0.0	0.0	0.0	130.7	123.7	14.3	13.7	0.0	0.0	146.0	138.3
	19th	1.0	0.8	0.0	0.0	0.0	0.0	0.0	0.0	57.4	59.1	15.1	15.6	0.0	0.0	73.5	75.5
	20th	0.0	0.0	59.7	60.0	2.0	1.3	0.8	0.9	53.2	49.2	2.7	3.5	0.0	0.0	118.3	114.9
Northeast Total		2.0	1.8	65.7	65.9	2.0	1.3	14.8	14.9	336.5	327.6	78.5	78.5	1.2	1.1	500.6	491.0
<i>Southern</i>																	
	3rd	0.0	0.0	0.0	0.0	0.0	0.0	0.0	0.0	12.0	12.0	1.0	1.0	0.0	0.0	13.0	13.0
	4th	0.0	0.3	0.0	0.0	0.0	0.0	61.0	61.0	146.3	137.9	36.0	36.3	0.0	0.0	243.3	235.5
	10th	0.1	0.6	0.0	0.0	0.0	0.0	0.0	0.0	16.0	15.2	7.3	6.2	0.0	0.0	23.5	22.0
	11th	0.0	0.0	0.0	0.0	0.0	0.0	11.0	11.0	20.6	19.6	7.0	7.0	0.0	0.0	38.6	37.6
	12th	0.0	0.0	2.9	2.2	0.0	0.0	2.8	1.9	9.8	10.3	0.0	0.0	0.0	0.0	15.5	14.3
	15th	0.0	0.0	1.0	1.0	0.0	0.0	0.0	0.0	5.5	5.7	10.0	10.0	0.0	0.0	16.5	16.7
	16th	0.0	0.0	0.0	0.0	0.0	0.0	0.0	0.0	8.1	8.0	1.0	1.0	31.0	31.0	40.1	40.0
Southern Total		0.1	0.9	3.9	3.2	0.0	0.0	74.8	73.9	218.3	208.7	62.3	61.5	31.0	31.0	390.5	379.1
<i>Western</i>																	
	6th	0.0	0.1	0.0	0.0	0.0	0.0	0.0	0.0	5.5	5.6	0.0	0.0	0.0	0.0	5.5	5.7
	7th	0.0	0.0	6.0	6.0	0.0	0.0	2.0	2.0	12.2	11.4	6.1	6.2	0.0	0.0	26.3	25.7
	9th	0.0	0.0	2.7	3.0	0.0	0.0	11.7	11.1	5.6	6.3	0.0	0.0	0.0	0.0	20.0	20.4
	14th	0.0	0.0	2.0	2.0	0.0	0.0	1.0	1.0	3.0	3.0	1.0	1.0	0.0	0.0	7.0	7.0
	21st	1.0	1.0	0.4	0.4	0.0	0.0	0.0	0.0	39.3	39.6	25.1	24.3	0.0	0.0	65.8	65.3
	22nd	0.0	0.0	0.0	0.0	0.0	0.0	0.0	0.0	11.7	10.7	5.1	5.6	0.0	0.0	16.9	16.2
Western Total		1.0	1.1	11.1	11.4	0.0	0.0	14.7	14.1	77.4	76.7	37.4	37.1	0.0	0.0	141.5	140.3
Statewide Total		8.8	8.3	90.2	89.7	3.1	2.1	124.1	121.7	1,251.4	1,227.0	307.7	308.4	32.2	32.1	1,817.4	1,789.2