

# July 2020\*

## FY 2020-2021

### CYDC JDSAG SUPPLEMENTAL REPORT

---

Prepared by the Division of Youth Services (DYS)

Data Management & Analysis

August 31, 2020

\* Following the initial announcement of positive cases of COVID-19 in Colorado on March 5th, data presented in this report largely reflect COVID-19 response and Executive Order (EO) compliance across the detained, committed, and paroled populations. The statewide detention bed availability was temporarily reduced to 200 effective April 21, 2020 COB; DYS plans to return to official allocations (327) and bed borrowing practices upon expiration of the EO. Due to the temporary nature of the reduction, DYS continues to utilize official detention bed allocations within this report. Commitment population reductions and Parole population increases are a direct result of the Division's EO response, releasing an unprecedented number of youth from residential placement to parole.



**COLORADO**  
**Division of Youth Services**

Office of Children, Youth & Families

# July 2020 CYDC Supplemental Report

## DYS Commitment ADP & New Commitments by Judicial District

Region	JD <sup>1</sup>	2021 Population Estimates <sup>2</sup>	ADP <sup>3</sup>		New Commitments		
			July 2020	YTD	July 2020	YTD	YTD Rate <sup>4</sup>
<i>Central</i>							
	1st	54,247	39.9	39.9	0	0	0.0
	2nd	57,556	63.5	63.5	1	1	0.2
	5th	9,148	2.0	2.0	0	0	0.0
	18th	114,514	67.4	67.4	3	3	0.3
<b>Central Total</b>		<b>235,465</b>	<b>172.9</b>	<b>172.9</b>	<b>4</b>	<b>4</b>	<b>0.2</b>
<i>Northeast</i>							
	8th	35,120	15.6	15.6	1	1	0.3
	13th	8,520	2.7	2.7	0	0	0.0
	17th	69,653	32.1	32.1	0	0	0.0
	19th	39,126	28.5	28.5	3	3	0.8
	20th	30,663	4.0	4.0	0	0	0.0
<b>Northeast Total</b>		<b>183,082</b>	<b>82.8</b>	<b>82.8</b>	<b>4</b>	<b>4</b>	<b>0.2</b>
<i>Southern</i>							
	3rd	1,875	3.0	3.0	0	0	0.0
	4th	84,107	56.4	56.4	1	1	0.1
	10th	17,817	8.6	8.6	0	0	0.0
	11th	7,367	3.8	3.8	1	1	1.4
	12th	5,455	0.0	0.0	0	0	0.0
	15th	2,111	4.0	4.0	0	0	0.0
	16th	2,836	1.0	1.0	0	0	0.0
<b>Southern Total</b>		<b>121,568</b>	<b>76.9</b>	<b>76.9</b>	<b>2</b>	<b>2</b>	<b>0.2</b>
<i>Western</i>							
	6th	7,430	1.5	1.5	0	0	0.0
	7th	10,673	1.9	1.9	0	0	0.0
	9th	8,519	2.0	2.0	0	0	0.0
	14th	5,788	0.0	0.0	0	0	0.0
	21st	16,466	27.8	27.8	0	0	0.0
	22nd	3,034	4.0	4.0	0	0	0.0
<b>Western Total</b>		<b>51,910</b>	<b>37.1</b>	<b>37.1</b>	<b>0</b>	<b>0</b>	<b>0.0</b>
<b>Statewide Total</b>		<b>592,025</b>	<b>369.7</b>	<b>369.7</b>	<b>10</b>	<b>10</b>	<b>0.2</b>

<sup>1</sup> JD represents the judicial district in which the client was committed. Regional totals are a sum of their respective judicial districts. Regional totals reported here may differ slightly from those reported in the Monthly Population Report, where region is defined by active caseloads.

<sup>2</sup> Source: DOLA 2021 Estimates.

<sup>3</sup> Due to rounding, totals shown may not be an exact sum of the subtotals.

<sup>4</sup> Per 10,000 youth in the population.

# July 2020 CYDC Supplemental Report

## DYS Detention ADP and New Detention Admissions by Judicial District

Region	JD	2020 Population Estimates <sup>1</sup>	ADP		New Admits		YTD New Admit Rate <sup>2</sup>
			July 2020	YTD	July 2020	YTD	
<i>Central</i>							
	1st	54,247	12.0	12.0	14	14	2.6
	2nd	57,556	27.1	27.1	30	30	5.2
	5th	9,148	0.6	0.6	1	1	1.1
	18th	114,514	34.0	34.0	27	27	2.4
<b>Central Total</b>		<b>235,465</b>	<b>73.7</b>	<b>73.7</b>	<b>72</b>	<b>72</b>	<b>3.1</b>
<i>Northeast</i>							
	8th	35,120	5.6	5.6	7	7	2.0
	13th	8,520	1.7	1.7	3	3	3.5
	17th	69,653	11.9	11.9	16	16	2.3
	19th	39,126	8.6	8.6	15	15	3.8
	20th	30,663	2.6	2.6	3	3	1.0
<b>Northeast Total</b>		<b>183,082</b>	<b>30.4</b>	<b>30.4</b>	<b>44</b>	<b>44</b>	<b>2.4</b>
<i>Southern</i>							
	3rd	1,875	1.0	1.0	0	0	0.0
	4th	84,107	35.6	35.6	50	50	5.9
	10th	17,817	2.6	2.6	10	10	5.6
	11th	7,367	1.5	1.5	3	3	4.1
	12th	5,455	1.2	1.2	1	1	1.8
	15th	2,111	0.0	0.0	0	0	0.0
	16th	2,836	0.1	0.1	1	1	3.5
<b>Southern Total</b>		<b>121,568</b>	<b>42.0</b>	<b>42.0</b>	<b>65</b>	<b>65</b>	<b>5.3</b>
<i>Western</i>							
	6th	7,430	1.1	1.1	2	2	2.7
	7th	10,673	0.6	0.6	2	2	1.9
	9th	8,519	0.3	0.3	1	1	1.2
	14th	5,788	0.0	0.0	0	0	0.0
	21st	16,466	5.6	5.6	16	16	9.7
	22nd	3,034	0.2	0.2	2	2	6.6
<b>Western Total</b>		<b>51,910</b>	<b>7.9</b>	<b>7.9</b>	<b>23</b>	<b>23</b>	<b>4.4</b>
<i>Missing JD or Multiple JDs</i>			<i>0.2</i>	<i>0.2</i>			
<b>Statewide Total</b>		<b>592,025</b>	<b>154.3</b>	<b>154.3</b>	<b>204</b>	<b>204</b>	<b>3.4</b>

<sup>1</sup> Source: DOLA 2020 Estimates.

<sup>2</sup> Per 10,000 youth in the population.

# July 2020 CYDC Supplemental Report

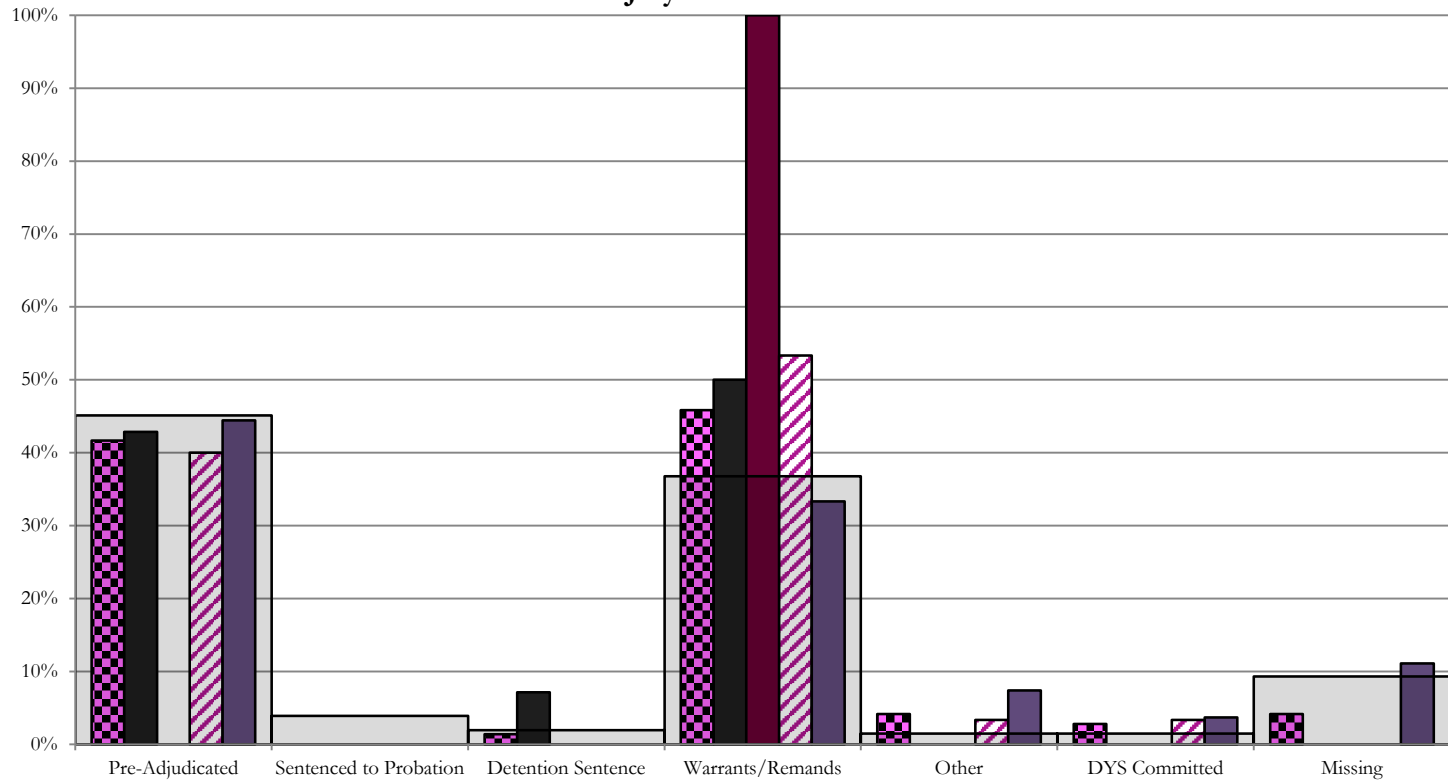
DYS Detention LOS by Judicial District				
Region	JD	YTD Detention Releases	YTD LOS (days)	LOS (days) Compared to State AVG
<i>Central</i>				
	1st	14	20.3	0.2
	2nd	25	12.6	-7.6
	5th	2	72.8	52.7
	18th	43	41.1	21.0
<b>Central Total</b>		<b>84</b>	<b>29.9</b>	<b>9.8</b>
<i>Northeast</i>				
	8th	5	8.3	-11.9
	13th	4	17.7	-2.5
	17th	20	8.0	-12.2
	19th	14	9.3	-10.9
	20th	4	36.7	16.5
<b>Northeast Total</b>		<b>47</b>	<b>11.7</b>	<b>-8.5</b>
<i>Southern</i>				
	3rd	0	0.0	-20.1
	4th	54	10.0	-10.2
	10th	7	3.3	-16.9
	11th	3	5.8	-14.3
	12th	2	165.1	145.0
	15th	0	0.0	-20.1
	16th	1	3.1	-17.0
<b>Southern Total</b>		<b>67</b>	<b>13.6</b>	<b>-6.5</b>
<i>Western</i>				
	6th	1	2.1	-18.1
	7th	1	0.0	-20.1
	9th	1	49.0	28.9
	14th	0	0.0	-20.1
	21st	12	10.7	-9.4
	22nd	2	0.5	-19.6
<b>Western Total</b>		<b>17</b>	<b>10.6</b>	<b>-9.5</b>
<b>Statewide Total</b>		<b>215</b>	<b>20.1</b>	<b>-</b>

## July 2020 CDYC Supplemental Report

### CYDC Reason Detained (RD) by Judicial District

Region	JD	Monthly New Admits	Pre-Adjudicated				Sentenced to Probation				Detention Sentence								Warrants/Remands				Other						DYS Committed		Missing									
			Felony		Misdemeanor		Technical Violator		New Charges		Probation Sentence		Detention Sentence		Valid Court Order (VCO) Truancy		Awaiting DSS (Social Services) Placement		Failure to Appear (FTA)		Failure to Comply (FTC)		Interstate Compact on Juveniles (ICJ) Hold		Immigration Hold		No Bond Hold		Out-of-Country Warrant		Institutional		Parole		Missing					
			#	%	#	%	#	%	#	%	#	%	#	%	#	%	#	%	#	%	#	%	#	%	#	%	#	%	#	%	#	%	#	%	#	%				
<b>Central</b>																																								
	1st	14	6	42.9%	0	0.0%	0	0.0%	0	0.0%	0	0.0%	1	7.1%	0	0.0%	0	0.0%	3	21.4%	4	28.6%	0	0.0%	0	0.0%	0	0.0%	0	0.0%	0	0.0%	0	0.0%	0	0.0%	0	0.0%		
	2nd	30	11	36.7%	1	3.3%	0	0.0%	0	0.0%	0	0.0%	0	0.0%	0	0.0%	0	0.0%	4	13.3%	12	40.0%	1	3.3%	0	0.0%	0	0.0%	0	0.0%	0	0.0%	0	0.0%	1	3.3%	0	0.0%		
	5th	1	0	0.0%	0	0.0%	0	0.0%	0	0.0%	0	0.0%	0	0.0%	0	0.0%	0	0.0%	0	0.0%	1	100.0%	0	0.0%	0	0.0%	0	0.0%	0	0.0%	0	0.0%	0	0.0%	0	0.0%	0	0.0%		
	18th	27	8	29.6%	4	14.8%	0	0.0%	0	0.0%	0	0.0%	0	0.0%	0	0.0%	0	0.0%	1	3.7%	8	29.6%	2	7.4%	0	0.0%	0	0.0%	0	0.0%	0	0.0%	1	3.7%	0	0.0%	3	11.1%		
<b>Central Total</b>		<b>72</b>	<b>25</b>	<b>35%</b>	<b>5</b>	<b>7%</b>	<b>0</b>	<b>0.0%</b>	<b>0</b>	<b>0.0%</b>	<b>0</b>	<b>0.0%</b>	<b>1</b>	<b>1.4%</b>	<b>0</b>	<b>0.0%</b>	<b>0</b>	<b>0.0%</b>	<b>8</b>	<b>11%</b>	<b>25</b>	<b>35%</b>	<b>3</b>	<b>4.2%</b>	<b>0</b>	<b>0.0%</b>	<b>0</b>	<b>0.0%</b>	<b>0</b>	<b>0.0%</b>	<b>0</b>	<b>0.0%</b>	<b>1</b>	<b>1.4%</b>	<b>1</b>	<b>1.4%</b>	<b>3</b>	<b>4.2%</b>		
<b>Northeast</b>																																								
	8th	7	0	0.0%	0	0.0%	1	14.3%	0	0.0%	0	0.0%	1	14.3%	0	0.0%	0	0.0%	0	0.0%	3	42.9%	0	0.0%	0	0.0%	0	0.0%	0	0.0%	0	0.0%	0	0.0%	0	0.0%	0	0.0%	2	28.6%
	13th	3	2	66.7%	0	0.0%	0	0.0%	0	0.0%	0	0.0%	0	0.0%	0	0.0%	0	0.0%	0	0.0%	0	0.0%	0	0.0%	0	0.0%	0	0.0%	0	0.0%	0	0.0%	0	0.0%	0	0.0%	0	0.0%	1	33.3%
	17th	16	8	50.0%	3	18.8%	0	0.0%	0	0.0%	0	0.0%	0	0.0%	0	0.0%	0	0.0%	3	18.8%	2	12.5%	0	0.0%	0	0.0%	0	0.0%	0	0.0%	0	0.0%	0	0.0%	0	0.0%	0	0.0%	0	0.0%
	19th	15	5	33.3%	1	6.7%	6	40.0%	0	0.0%	0	0.0%	0	0.0%	0	0.0%	0	0.0%	3	20.0%	0	0.0%	0	0.0%	0	0.0%	0	0.0%	0	0.0%	0	0.0%	0	0.0%	0	0.0%	0	0.0%	0	0.0%
	20th	3	0	0.0%	1	33.3%	0	0.0%	0	0.0%	0	0.0%	1	33.3%	0	0.0%	0	0.0%	0	0.0%	1	33.3%	0	0.0%	0	0.0%	0	0.0%	0	0.0%	0	0.0%	0	0.0%	0	0.0%	0	0.0%	0	0.0%
<b>Northeast Total</b>		<b>44</b>	<b>15</b>	<b>34%</b>	<b>5</b>	<b>11%</b>	<b>7</b>	<b>15.9%</b>	<b>0</b>	<b>0.0%</b>	<b>0</b>	<b>0.0%</b>	<b>2</b>	<b>4.5%</b>	<b>0</b>	<b>0.0%</b>	<b>0</b>	<b>0.0%</b>	<b>3</b>	<b>6.8%</b>	<b>9</b>	<b>20%</b>	<b>0</b>	<b>0.0%</b>	<b>0</b>	<b>0.0%</b>	<b>0</b>	<b>0.0%</b>	<b>0</b>	<b>0.0%</b>	<b>0</b>	<b>0.0%</b>	<b>0</b>	<b>0.0%</b>	<b>0</b>	<b>0.0%</b>	<b>3</b>	<b>7%</b>		
<b>Southern</b>																																								
	3rd	0	0	0.0%	0	0.0%	0	0.0%	0	0.0%	0	0.0%	0	0.0%	0	0.0%	0	0.0%	0	0.0%	0	0.0%	0	0.0%	0	0.0%	0	0.0%	0	0.0%	0	0.0%	0	0.0%	0	0.0%	0	0.0%	0	0.0%
	4th	50	20	40.0%	7	14.0%	0	0.0%	0	0.0%	0	0.0%	0	0.0%	0	0.0%	0	0.0%	1	2.0%	16	32.0%	0	0.0%	0	0.0%	0	0.0%	0	0.0%	1	2.0%	0	0.0%	0	0.0%	5	10.0%		
	10th	10	2	20.0%	1	10.0%	1	10.0%	0	0.0%	0	0.0%	0	0.0%	0	0.0%	0	0.0%	4	40.0%	2	20.0%	0	0.0%	0	0.0%	0	0.0%	0	0.0%	0	0.0%	0	0.0%	0	0.0%	0	0.0%	0	0.0%
	11th	3	0	0.0%	1	33.3%	0	0.0%	0	0.0%	0	0.0%	0	0.0%	0	0.0%	0	0.0%	0	0.0%	0	0.0%	0	0.0%	0	0.0%	0	0.0%	0	0.0%	0	0.0%	0	0.0%	0	0.0%	2	66.7%		
	12th	1	1	100.0%	0	0.0%	0	0.0%	0	0.0%	0	0.0%	0	0.0%	0	0.0%	0	0.0%	0	0.0%	0	0.0%	0	0.0%	0	0.0%	0	0.0%	0	0.0%	0	0.0%	0	0.0%	0	0.0%	0	0.0%	0	0.0%
	15th	0	0	0.0%	0	0.0%	0	0.0%	0	0.0%	0	0.0%	0	0.0%	0	0.0%	0	0.0%	0	0.0%	0	0.0%	0	0.0%	0	0.0%	0	0.0%	0	0.0%	0	0.0%	0	0.0%	0	0.0%	0	0.0%	0	0.0%
	16th	1	0	0.0%	0	0.0%	0	0.0%	0	0.0%	0	0.0%	0	0.0%	0	0.0%	0	0.0%	0	0.0%	0	0.0%	0	0.0%	0	0.0%	0	0.0%	0	0.0%	0	0.0%	0	0.0%	0	0.0%	1	100.0%		
<b>Southern Total</b>		<b>65</b>	<b>23</b>	<b>35%</b>	<b>9</b>	<b>14%</b>	<b>1</b>	<b>1.5%</b>	<b>0</b>	<b>0.0%</b>	<b>0</b>	<b>0.0%</b>	<b>0</b>	<b>0.0%</b>	<b>0</b>	<b>0.0%</b>	<b>0</b>	<b>0.0%</b>	<b>5</b>	<b>8%</b>	<b>18</b>	<b>28%</b>	<b>0</b>	<b>0.0%</b>	<b>0</b>	<b>0.0%</b>	<b>0</b>	<b>0.0%</b>	<b>0</b>	<b>0.0%</b>	<b>0</b>	<b>0.0%</b>	<b>1</b>	<b>1.5%</b>	<b>0</b>	<b>0.0%</b>	<b>8</b>	<b>12%</b>		
<b>Western</b>																																								
	6th	2	1	50.0%	0	0.0%	0	0.0%	0	0.0%	0	0.0%	0	0.0%	0	0.0%	0	0.0%	0	0.0%	0	0.0%	0	0.0%	0	0.0%	0	0.0%	0	0.0%	0	0.0%	0	0.0%	0	0.0%	1	50%		
	7th	2	2	100.0%	0	0.0%	0	0.0%	0	0.0%	0	0.0%	0	0.0%	0	0.0%	0	0.0%	0	0.0%	0	0.0%	0	0.0%	0	0.0%	0	0.0%	0	0.0%	0	0.0%	0	0.0%	0	0.0%	0	0.0%	0	0%
	9th	1	0	0.0%	0	0.0%	0	0.0%	0	0.0%	0	0.0%	0	0.0%	0	0.0%	0	0.0%	0	0.0%	0	0.0%	0	0.0%	0	0.0%	0	0.0%	0	0.0%	0	0.0%	0	0.0%	0	0.0%	1	100%		
	14th	0	0	0.0%	0	0.0%	0	0.0%	0	0.0%	0	0.0%	0	0.0%	0	0.0%	0	0.0%	0	0.0%	0	0.0%	0	0.0%	0	0.0%	0	0.0%	0	0.0%	0	0.0%	0	0.0%	0	0.0%	0	0%		
	21st	16	3	18.8%	2	12.5%	0	0.0%	0	0.0%	0	0.0%	1	6.3%	0	0.0%	0	0.0%	0	0.0%	7	43.8%	0	0.0%	0	0.0%	0	0.0%	0	0.0%	0	0.0%	0	0.0%	0	0.0%	3	19%		
	22nd	2	2	100.0%	0	0.0%	0	0.0%	0	0.0%	0	0.0%	0	0.0%	0	0.0%	0	0.0%	0	0.0%	0	0.0%	0	0.0%	0	0.0%	0	0.0%	0	0.0%	0	0.0%	0	0.0%	0	0.0%	0	0%		
<b>Western Total</b>		<b>23</b>	<b>8</b>	<b>35%</b>	<b>2</b>	<b>8.7%</b>	<b>0</b>	<b>0.0%</b>	<b>0</b>	<b>0.0%</b>	<b>0</b>	<b>0.0%</b>	<b>1</b>	<b>4.3%</b>	<b>0</b>	<b>0.0%</b>	<b>0</b>	<b>0.0%</b>	<b>0</b>	<b>0.0%</b>	<b>7</b>	<b>30%</b>	<b>0</b>	<b>0.0%</b>	<b>0</b>	<b>0.0%</b>	<b>0</b>	<b>0.0%</b>	<b>0</b>	<b>0.0%</b>	<b>0</b>	<b>0.0%</b>	<b>0</b>	<b>0.0%</b>	<b>0</b>	<b>0.0%</b>	<b>5</b>	<b>22%</b>		
<b>Individual RD Totals</b>		<b>204</b>	<b>71</b>	<b>35%</b>	<b>21</b>	<b>10%</b>	<b>8</b>	<b>3.9%</b>	<b>0</b>	<b>0.0%</b>	<b>0</b>	<b>0.0%</b>	<b>4</b>	<b>2.0%</b>	<b>0</b>	<b>0.0%</b>	<b>0</b>	<b>0.0%</b>	<b>16</b>	<b>8%</b>	<b>59</b>	<b>29%</b>	<b>3</b>	<b>1.5%</b>	<b>0</b>	<b>0.0%</b>	<b>0</b>	<b>0.0%</b>	<b>0</b>	<b>0.0%</b>	<b>0</b>	<b>0.0%</b>	<b>2</b>	<b>1.0%</b>	<b>1</b>	<b>0.5%</b>	<b>19</b>	<b>9%</b>		
<b>Statewide Totals</b>		<b>204</b>	<b>92</b>	<b>45.1%</b>	<b>8</b>	<b>3.9%</b>	<b>0</b>	<b>0.0%</b>	<b>0</b>	<b>0.0%</b>	<b>4</b>	<b>2.0%</b>	<b>0</b>	<b>0.0%</b>	<b>0</b>	<b>0.0%</b>	<b>16</b>	<b>8%</b>	<b>75</b>	<b>36.8%</b>	<b>3</b>	<b>1.5%</b>	<b>0</b>	<b>0.0%</b>	<b>0</b>	<b>0.0%</b>	<b>0</b>	<b>0.0%</b>	<b>0</b>	<b>0.0%</b>	<b>3</b>	<b>1.5%</b>	<b>1</b>	<b>0.5%</b>	<b>19</b>	<b>9%</b>				

## Central Region CYDC Reason Detained by Judicial District July 2020 New Admits

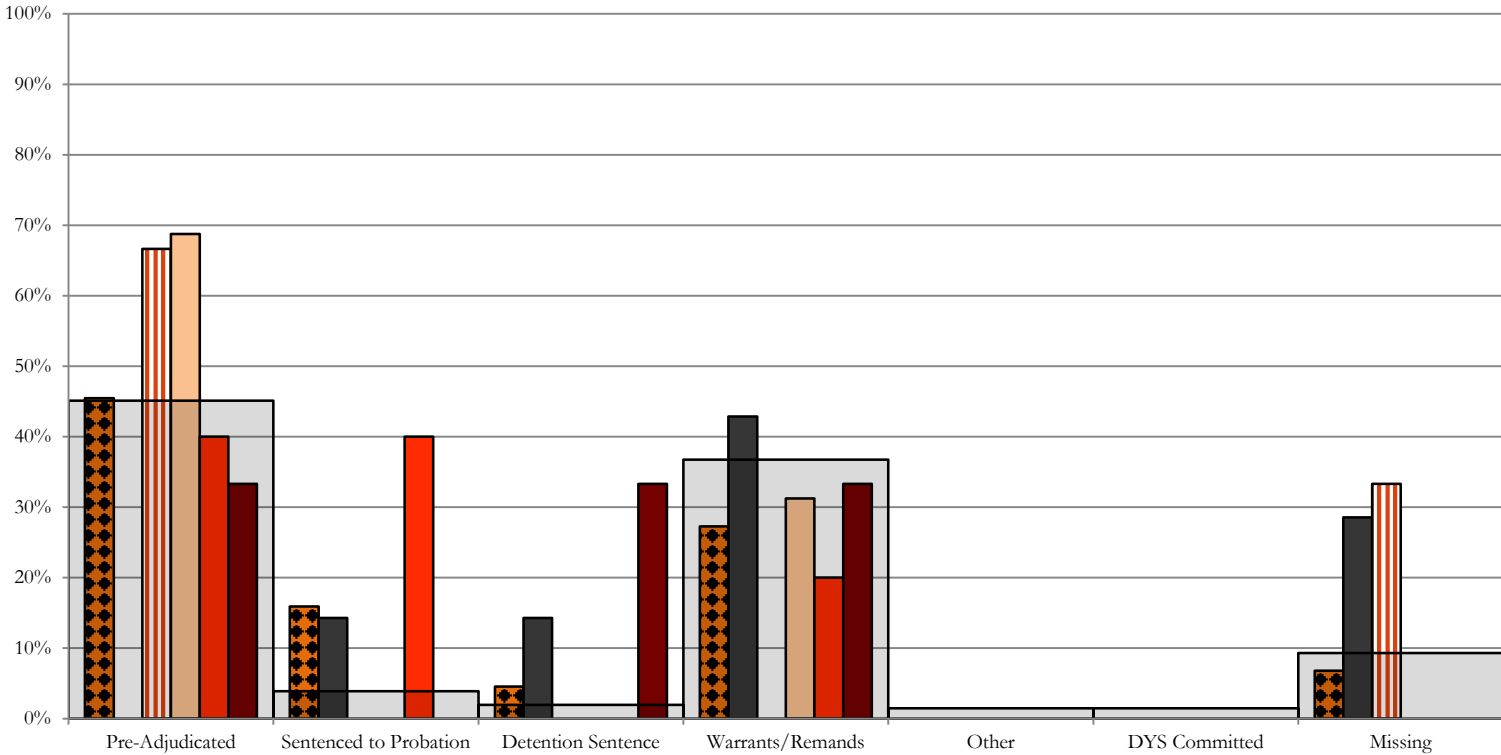


- CENTRAL REGION, 72 New Admits
- 1st JD, 14 New Admits
- 5th JD, 1 New Admits
- 18th JD, 27 New Admits
- 2nd JD, 30 New Admits
- STATEWIDE, 204 New Admits

# Northeast Region

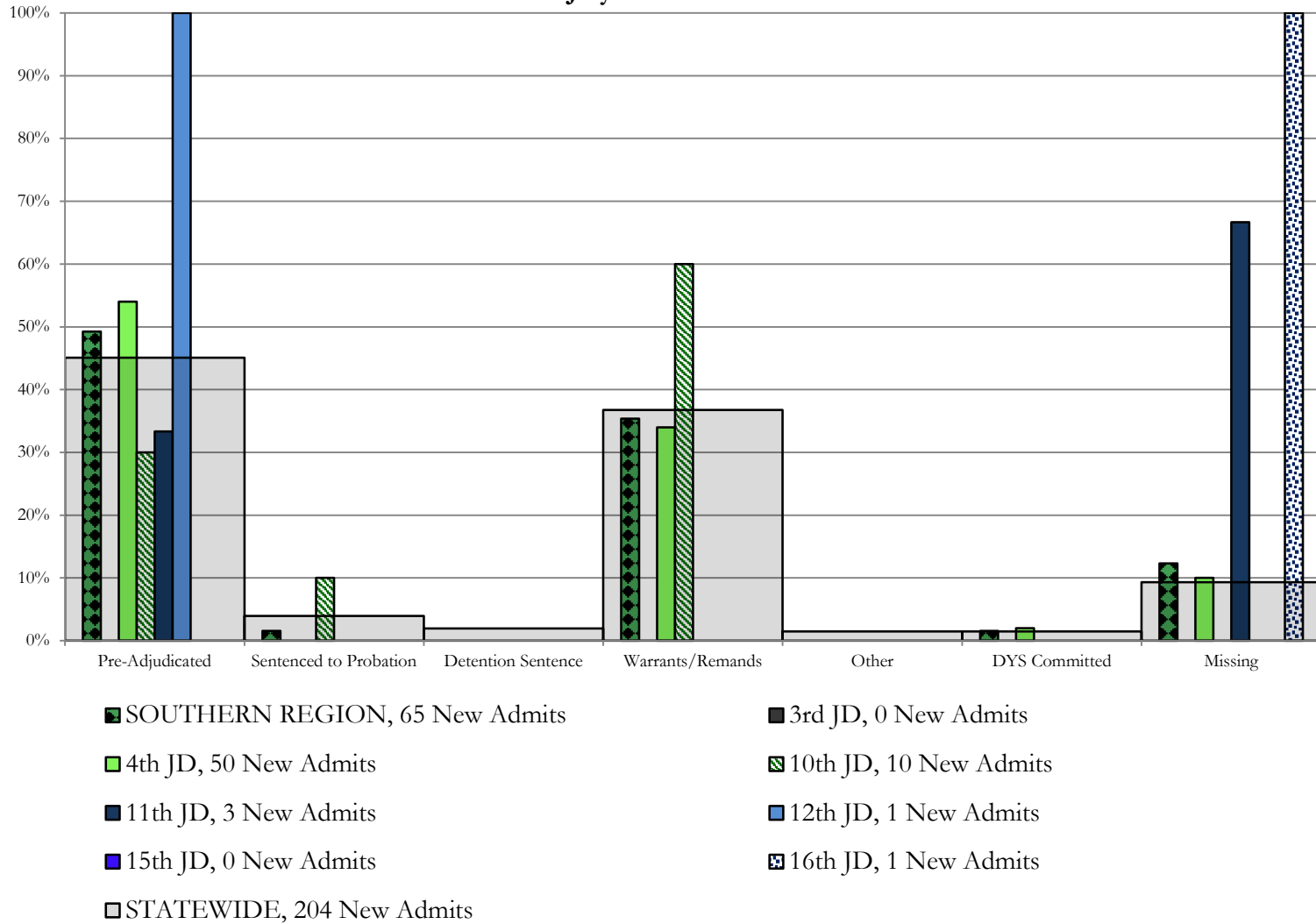
## CYDC Reason Detained by Judicial District

### July 2020 New Admits



- NORTHEAST REGION, 44 New Admits
- 13th JD, 3 New Admits
- 19th JD, 15 New Admits
- STATEWIDE, 204 New Admits
- 8th JD, 7 New Admits
- 17th JD, 16 New Admits
- 20th JD, 3 New Admits

## Southern Region CYDC Reason Detained by Judicial District July 2020 New Admits

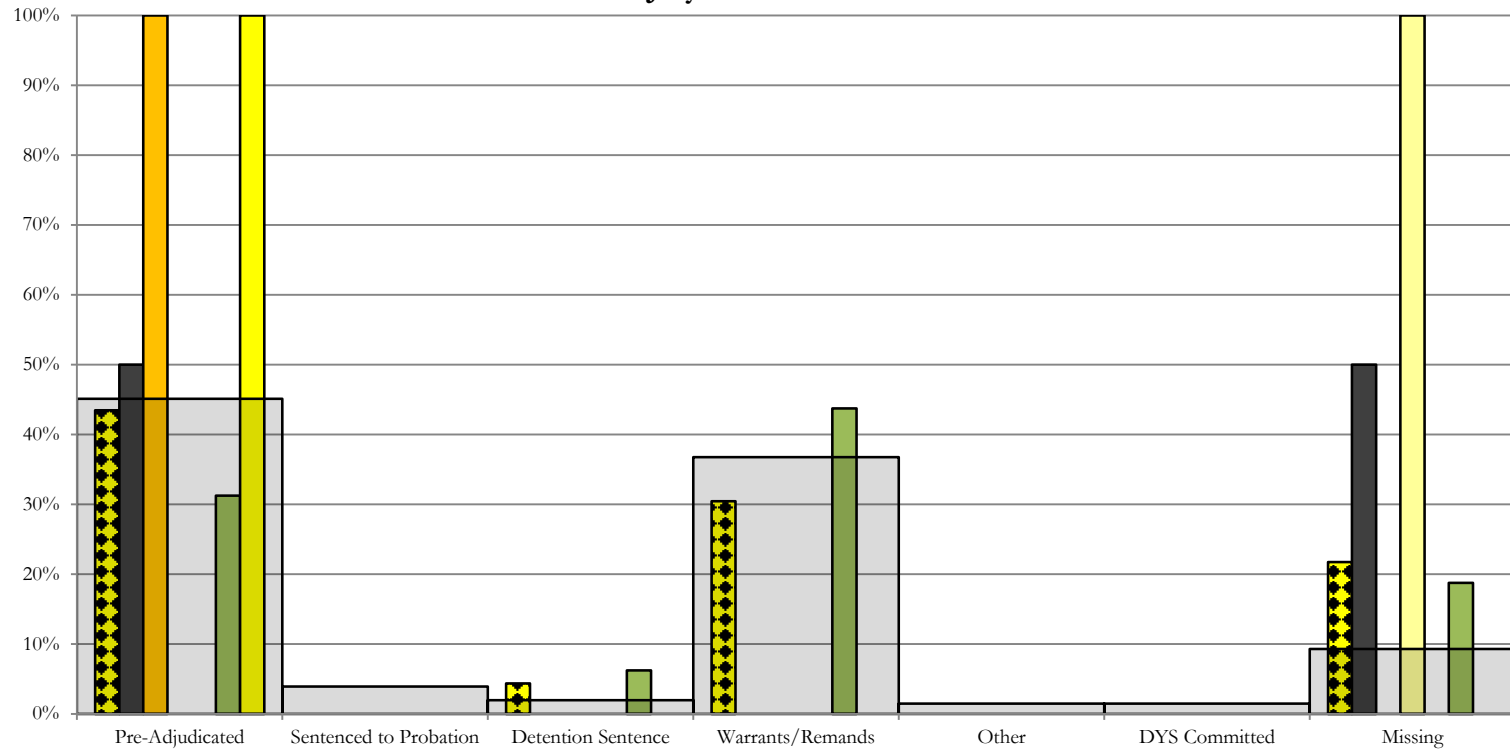




# Western Region

## CYDC Reason Detained by Judicial District

### July 2020 New Admits



■ WESTERN REGION, 23 New Admits

■ 7th JD, 2 New Admits

■ 14th JD, 0 New Admits

■ 22nd JD, 2 New Admits

■ 6th JD, 2 New Admits

■ 9th JD, 1 New Admits

■ 21st JD, 16 New Admits

■ STATEWIDE, 204 New Admits

# July 2020 CYDC Supplemental Report

## DYS Detention Maximum Youth Served by Judicial District<sup>1</sup>

Region	JD	Detention Capacity	Detention ADP		Maximum Youth Served on a Single Day <sup>2,3</sup>			
			July 2020	YTD	July 2020		YTD	
					Number of Youth	% of Detention Capacity	Number of Youth	% of Detention Capacity
<i>Central</i>								
	1st	35	12.0	12.0	15	42.9%	15	42.9%
	2nd	49	27.1	27.1	32	65.3%	32	65.3%
	5th	4	0.6	0.6	1	25.0%	1	25.0%
	18th	48	34.0	34.0	43	89.6%	43	89.6%
<b>Central Region</b>		<b>136</b>	<b>73.7</b>	<b>73.7</b>	<b>82</b>	<b>60.3%</b>	<b>82</b>	<b>60.3%</b>
<i>Northeast</i>								
	8th	14	5.6	5.6	8	57.1%	8	57.1%
	13th	5	1.7	1.7	3	60.0%	3	60.0%
	17th	28	11.9	11.9	16	57.1%	16	57.1%
	19th	18	8.6	8.6	12	66.7%	12	66.7%
	20th	8	2.6	2.6	4	50.0%	4	50.0%
<b>Northeast Region</b>		<b>73</b>	<b>30.4</b>	<b>30.4</b>	<b>39</b>	<b>53.4%</b>	<b>39</b>	<b>53.4%</b>
<i>Southern</i>								
	3rd	2	1.0	1.0	1	50.0%	1	50.0%
	4th	54	35.6	35.6	10	18.5%	10	18.5%
	10th	14	2.6	2.6	5	35.7%	5	35.7%
	11th	3	1.5	1.5	2	66.7%	2	66.7%
	12th	4	1.2	1.2	2	50.0%	2	50.0%
	15th	2	0.0	0.0	0	0.0%	0	0.0%
	16th	3	0.1	0.1	1	33.3%	1	33.3%
<b>Southern Region</b>		<b>82</b>	<b>42.0</b>	<b>42.0</b>	<b>19</b>	<b>23.2%</b>	<b>19</b>	<b>23.2%</b>
<i>Western</i>								
	6th	5	1.1	1.1	2	40.0%	2	40.0%
	7th	5	0.6	0.6	2	40.0%	2	40.0%
	9th	3	0.3	0.3	1	33.3%	1	33.3%
	14th	3	0.0	0.0	0	0.0%	0	0.0%
	21st	16	5.6	5.6	9	56.3%	9	56.3%
	22nd	4	0.2	0.2	1	25.0%	1	25.0%
<b>Western Region</b>		<b>36</b>	<b>7.9</b>	<b>7.9</b>	<b>13</b>	<b>36.1%</b>	<b>13</b>	<b>36.1%</b>
<i>Missing JD or Multiple JDs</i>			0.2	0.2				
<b>Statewide</b>		<b>327</b>	<b>154.3</b>	<b>154.3</b>	<b>138</b>	<b>42.2%</b>	<b>138</b>	<b>42.2%</b>

<sup>1</sup> Maximum youth served is the highest number of youth in detention on a single day during the month or fiscal year.

<sup>2</sup> Regional figures are not the sum of judicial districts, but represent the maximum count on one day for the entire region.

<sup>3</sup> State figures are not the sum of regional figures, but represent the maximum count on one day for the entire state.

## July 2020 CYDC Supplemental Report

### CYDC Community ADP by Judicial District

Region	JD	Committed		Diversion		ICJ		Municipal		Pre-Adjudicated		Sentenced		VCO		Total	
		July 2020	YTD	July 2020	YTD	July 2020	YTD	July 2020	YTD	July 2020	YTD	July 2020	YTD	July 2020	YTD	July 2020	YTD
<i>Central</i>																	
	1st	2.0	2.0	0.0	0.0	0.0	0.0	16.9	16.9	195.1	195.1	31.3	31.3	0.0	0.0	245.4	245.4
	2nd	1.2	1.2	1.0	1.0	0.1	0.1	0.0	0.0	140.7	140.7	42.4	42.4	0.0	0.0	185.4	185.4
	5th	0.0	0.0	6.0	6.0	0.0	0.0	0.0	0.0	7.0	7.0	31.0	31.0	0.0	0.0	44.0	44.0
	18th	1.1	1.1	2.0	2.0	0.4	0.4	1.0	1.0	266.4	266.4	30.5	30.5	0.0	0.0	301.3	301.3
<b>Central Total</b>		<b>4.3</b>	<b>4.3</b>	<b>9.0</b>	<b>9.0</b>	<b>0.5</b>	<b>0.5</b>	<b>17.9</b>	<b>17.9</b>	<b>609.2</b>	<b>609.2</b>	<b>135.2</b>	<b>135.2</b>	<b>0.0</b>	<b>0.0</b>	<b>776.1</b>	<b>776.1</b>
<i>Northeast</i>																	
	8th	0.0	0.0	5.8	5.8	0.0	0.0	0.0	0.0	77.1	77.1	44.1	44.1	0.0	0.0	127.0	127.0
	13th	0.0	0.0	0.0	0.0	0.0	0.0	14.0	14.0	14.0	14.0	1.0	1.0	0.2	0.2	29.2	29.2
	17th	1.0	1.0	1.0	1.0	0.0	0.0	0.0	0.0	122.7	122.7	25.0	25.0	0.0	0.0	149.7	149.7
	19th	0.6	0.6	0.0	0.0	0.0	0.0	0.0	0.0	61.8	61.8	17.6	17.6	0.0	0.0	80.1	80.1
	20th	0.0	0.0	65.1	65.1	0.6	0.6	1.0	1.0	48.2	48.2	4.3	4.3	0.0	0.0	119.2	119.2
<b>Northeast Total</b>		<b>1.6</b>	<b>1.6</b>	<b>71.9</b>	<b>71.9</b>	<b>0.6</b>	<b>0.6</b>	<b>15.0</b>	<b>15.0</b>	<b>323.7</b>	<b>323.7</b>	<b>92.0</b>	<b>92.0</b>	<b>0.2</b>	<b>0.2</b>	<b>505.1</b>	<b>505.1</b>
<i>Southern</i>																	
	3rd	0.0	0.0	0.0	0.0	0.0	0.0	0.0	0.0	12.0	12.0	1.0	1.0	0.0	0.0	13.0	13.0
	4th	0.7	0.7	0.0	0.0	0.0	0.0	61.0	61.0	131.9	131.9	33.9	33.9	0.0	0.0	227.4	227.4
	10th	1.0	1.0	0.0	0.0	0.0	0.0	0.0	0.0	14.4	14.4	4.7	4.7	0.0	0.0	20.1	20.1
	11th	0.0	0.0	0.0	0.0	0.0	0.0	11.0	11.0	18.4	18.4	7.0	7.0	0.0	0.0	36.4	36.4
	12th	0.0	0.0	1.5	1.5	0.0	0.0	1.0	1.0	10.7	10.7	0.0	0.0	0.0	0.0	13.2	13.2
	15th	0.0	0.0	1.0	1.0	0.0	0.0	0.0	0.0	5.9	5.9	10.0	10.0	0.0	0.0	16.9	16.9
	16th	0.0	0.0	0.0	0.0	0.0	0.0	0.0	0.0	7.9	7.9	1.0	1.0	30.0	30.0	38.9	38.9
<b>Southern Total</b>		<b>1.7</b>	<b>1.7</b>	<b>2.5</b>	<b>2.5</b>	<b>0.0</b>	<b>0.0</b>	<b>73.0</b>	<b>73.0</b>	<b>201.2</b>	<b>201.2</b>	<b>57.6</b>	<b>57.6</b>	<b>30.0</b>	<b>30.0</b>	<b>365.9</b>	<b>365.9</b>
<i>Western</i>																	
	6th	0.2	0.2	0.0	0.0	0.0	0.0	0.0	0.0	5.8	5.8	0.0	0.0	0.0	0.0	6.0	6.0
	7th	0.0	0.0	6.0	6.0	0.0	0.0	2.0	2.0	11.7	11.7	6.0	6.0	0.0	0.0	25.7	25.7
	9th	0.0	0.0	2.0	2.0	0.0	0.0	2.5	2.5	6.0	6.0	0.0	0.0	0.0	0.0	10.5	10.5
	14th	0.0	0.0	2.0	2.0	0.0	0.0	1.0	1.0	3.0	3.0	1.0	1.0	0.0	0.0	7.0	7.0
	21st	1.0	1.0	0.0	0.0	0.0	0.0	0.0	0.0	40.2	40.2	23.4	23.4	0.0	0.0	64.7	64.7
	22nd	0.0	0.0	0.0	0.0	0.0	0.0	0.0	0.0	9.6	9.6	6.0	6.0	0.0	0.0	15.6	15.6
<b>Western Total</b>		<b>1.2</b>	<b>1.2</b>	<b>10.0</b>	<b>10.0</b>	<b>0.0</b>	<b>0.0</b>	<b>5.5</b>	<b>5.5</b>	<b>76.3</b>	<b>76.3</b>	<b>36.4</b>	<b>36.4</b>	<b>0.0</b>	<b>0.0</b>	<b>129.4</b>	<b>129.4</b>
<b>Statewide Total</b>		<b>8.8</b>	<b>8.8</b>	<b>93.3</b>	<b>93.3</b>	<b>1.1</b>	<b>1.1</b>	<b>111.3</b>	<b>111.3</b>	<b>1,210.4</b>	<b>1,210.4</b>	<b>321.2</b>	<b>321.2</b>	<b>30.2</b>	<b>30.2</b>	<b>1,776.4</b>	<b>1,776.4</b>