

# June 2020\*

## FY 2019-2020

### CYDC JDSAG SUPPLEMENTAL REPORT

---

Prepared by the Division of Youth Services (DYS)

Data Management & Analysis

July 31, 2020

\* Following the initial announcement of positive cases of COVID-19 in Colorado on March 5th, data presented in this report largely reflect COVID-19 response and Executive Order (EO) compliance across the detained, committed, and paroled populations. The statewide detention bed availability was temporarily reduced to 200 effective April 21, 2020 COB; DYS plans to return to official allocations (327) and bed borrowing practices upon expiration of the EO. Due to the temporary nature of the reduction, DYS continues to utilize official detention bed allocations within this report. Commitment population reductions and Parole population increases are a direct result of the Division's EO response, releasing an unprecedented number of youth from residential placement to parole.



**COLORADO**

**Division of Youth Services**

Office of Children, Youth & Families

# June 2020 CYDC Supplemental Report

## DYS Commitment ADP & New Commitments by Judicial District

Region	JD <sup>1</sup>	2020 Population Estimates <sup>2</sup>	ADP <sup>3</sup>		New Commitments		
			June 2020	YTD	June 2020	YTD	YTD Rate <sup>4</sup>
<i>Central</i>							
	1st	54,722	37.2	62.2	6	19	3.5
	2nd	57,309	63.6	72.2	3	40	7.0
	5th	9,320	2.0	3.8	0	1	1.1
	18th	115,605	68.3	73.4	3	41	3.5
<b>Central Total</b>		<b>236,956</b>	<b>171.2</b>	<b>211.5</b>	<b>12</b>	<b>101</b>	<b>4.3</b>
<i>Northeast</i>							
	8th	34,597	18.4	18.3	1	16	4.6
	13th	8,496	3.0	2.7	0	3	3.5
	17th	69,940	32.9	42.4	1	27	3.9
	19th	38,548	28.0	36.3	3	28	7.3
	20th	31,121	4.0	4.1	1	2	0.6
<b>Northeast Total</b>		<b>182,702</b>	<b>86.3</b>	<b>103.7</b>	<b>6</b>	<b>76</b>	<b>4.2</b>
<i>Southern</i>							
	3rd	1,817	2.5	2.7	1	2	11.0
	4th	83,065	56.2	65.1	4	35	4.2
	10th	18,110	9.3	9.7	1	7	3.9
	11th	7,264	3.0	3.0	0	3	4.1
	12th	5,399	0.9	3.7	1	4	7.4
	15th	2,125	4.0	3.0	0	1	4.7
	16th	2,762	2.0	2.2	0	1	3.6
<b>Southern Total</b>		<b>120,542</b>	<b>77.9</b>	<b>89.4</b>	<b>7</b>	<b>53</b>	<b>4.4</b>
<i>Western</i>							
	6th	7,285	1.0	1.4	0	0	0.0
	7th	10,595	4.6	6.4	0	4	3.8
	9th	8,578	1.2	3.6	1	1	1.2
	14th	5,752	0.0	0.0	0	0	0.0
	21st	16,322	27.3	32.1	1	17	10.4
	22nd	3,063	4.0	6.7	1	7	22.9
<b>Western Total</b>		<b>51,595</b>	<b>38.1</b>	<b>50.2</b>	<b>3</b>	<b>29</b>	<b>5.6</b>
<b>Statewide Total</b>		<b>591,795</b>	<b>373.4</b>	<b>454.8</b>	<b>28</b>	<b>259</b>	<b>4.4</b>

<sup>1</sup> JD represents the judicial district in which the client was committed. Regional totals are a sum of their respective judicial districts. Regional totals reported here may differ slightly from those reported in the Monthly Population Report, where region is defined by active caseloads.

<sup>2</sup> Source: DOLA 2020 Estimates.

<sup>3</sup> Due to rounding, totals shown may not be an exact sum of the subtotals.

<sup>4</sup> Per 10,000 youth in the population.

## June 2020 CYDC Supplemental Report

### DYS Detention ADP and New Detention Admissions by Judicial District

Region	JD	2020 Population Estimates <sup>1</sup>	ADP		New Admits		
			June 2020	YTD	June 2020	YTD	YTD New Admit Rate <sup>2</sup>
<i>Central</i>							
	1st	54,722	11.1	17.7	12	343	62.7
	2nd	57,309	28.0	35.2	43	620	108.2
	5th	9,320	1.0	0.9	1	17	18.2
	18th	115,605	38.0	47.8	39	759	65.7
<b>Central Total</b>		<b>236,956</b>	<b>78.1</b>	<b>101.6</b>	<b>95</b>	<b>1,739</b>	<b>73.4</b>
<i>Northeast</i>							
	8th	34,597	4.1	11.8	11	246	71.1
	13th	8,496	1.5	2.9	4	55	64.7
	17th	69,940	12.4	19.7	24	378	54.0
	19th	38,548	6.9	10.2	18	315	81.7
	20th	31,121	2.6	3.9	4	79	25.4
<b>Northeast Total</b>		<b>182,702</b>	<b>27.6</b>	<b>48.5</b>	<b>61</b>	<b>1,073</b>	<b>58.7</b>
<i>Southern</i>							
	3rd	1,817	2.4	2.4	6	27	148.6
	4th	83,065	35.9	44.5	82	719	86.6
	10th	18,110	2.4	4.5	9	151	83.4
	11th	7,264	0.8	1.8	3	47	64.7
	12th	5,399	1.1	1.9	1	21	38.9
	15th	2,125	0.9	1.3	0	13	61.2
	16th	2,762	0.0	0.4	0	11	39.8
<b>Southern Total</b>		<b>120,542</b>	<b>43.5</b>	<b>56.8</b>	<b>101</b>	<b>989</b>	<b>82.0</b>
<i>Western</i>							
	6th	7,285	0.6	0.5	2	9	12.4
	7th	10,595	0.1	0.5	1	24	22.7
	9th	8,578	2.1	1.2	0	26	30.3
	14th	5,752	0.0	0.9	0	9	15.6
	21st	16,322	5.0	10.3	7	200	122.5
	22nd	3,063	0.4	0.8	2	14	45.7
<b>Western Total</b>		<b>51,595</b>	<b>8.1</b>	<b>14.3</b>	<b>12</b>	<b>282</b>	<b>54.7</b>
<i>Missing JD or Multiple JDs</i>			<i>1.1</i>	<i>2.2</i>			
<b>Statewide Total</b>		<b>591,795</b>	<b>158.4</b>	<b>223.5</b>	<b>269</b>	<b>4,083</b>	<b>69.0</b>

<sup>1</sup> Source: DOLA 2020 Estimates.

<sup>2</sup> Per 10,000 youth in the population.

# June 2020 CYDC Supplemental Report

DYS Detention LOS by Judicial District				
Region	JD	YTD Detention Releases	YTD LOS (days)	LOS (days) Compared to State AVG
<i>Central</i>				
	1st	334	16.9	-2.7
	2nd	630	18.7	-0.9
	5th	17	11.0	-8.6
	18th	747	20.1	0.5
<b>Central Total</b>		<b>1,728</b>	<b>18.9</b>	<b>-0.7</b>
<i>Northeast</i>				
	8th	251	16.6	-3.0
	13th	55	17.0	-2.5
	17th	385	17.1	-2.5
	19th	314	11.4	-8.1
	20th	85	17.4	-2.2
<b>Northeast Total</b>		<b>1,090</b>	<b>15.4</b>	<b>-4.2</b>
<i>Southern</i>				
	3rd	34	15.9	-3.7
	4th	704	23.0	3.5
	10th	155	8.5	-11.1
	11th	48	12.7	-6.8
	12th	21	17.6	-2.0
	15th	13	30.6	11.0
	16th	11	10.8	-8.8
<b>Southern Total</b>		<b>986</b>	<b>19.9</b>	<b>0.3</b>
<i>Western</i>				
	6th	9	16.3	-3.3
	7th	26	5.7	-13.9
	9th	28	16.4	-3.2
	14th	9	37.1	17.5
	21st	195	15.1	-4.5
	22nd	15	22.2	2.6
<b>Western Total</b>		<b>282</b>	<b>15.5</b>	<b>-4.1</b>
<b>Statewide Total</b>		<b>4,118</b>	<b>19.6</b>	<b>-</b>

## June 2020 CYDC Supplemental Report

### YTD DYS Detention ADP & Ethnicity by Judicial District

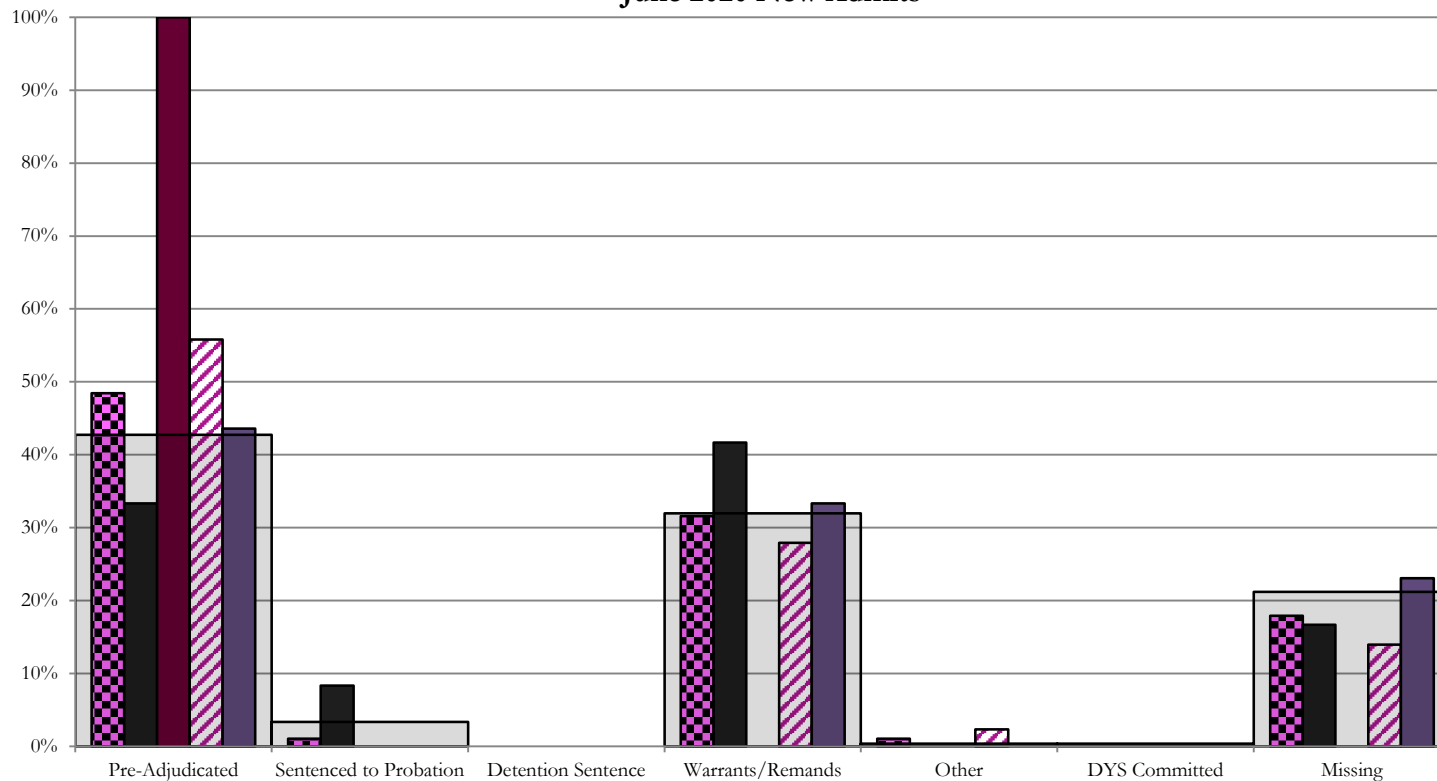
Region	JD	Anglo-American		African-American		Hispanic / Latino		Native-American		Asian-American		Other		TOTAL	
		ADP	%	ADP	%	ADP	%	ADP	%	ADP	%	ADP	%	ADP	%
<b>Central</b>															
	1st	9.3	52.7%	3.5	19.7%	3.8	21.6%	0.1	0.5%	0.4	2.5%	0.5	2.9%	17.7	100%
	2nd	3.2	9.0%	12.5	35.5%	16.3	46.4%	0.3	0.9%	2.8	7.9%	0.1	0.3%	35.2	100%
	5th	0.5	54.7%	0.0	0.0%	0.4	45.3%	0.0	0.0%	0.0	0.0%	0.0	0.0%	0.9	100%
	18th	13.6	28.5%	15.7	32.8%	15.0	31.3%	1.1	2.3%	1.5	3.1%	0.9	2.0%	47.8	100%
<b>Central Total</b>		<b>26.6</b>	<b>36.2%</b>	<b>31.6</b>	<b>22.0%</b>	<b>35.5</b>	<b>36.1%</b>	<b>1.5</b>	<b>0.9%</b>	<b>4.7</b>	<b>3.4%</b>	<b>1.6</b>	<b>1.3%</b>	<b>101.6</b>	<b>100%</b>
<b>Northeast</b>															
	8th	6.3	52.9%	0.4	3.8%	5.1	42.8%	0.0	0.2%	0.0	0.0%	0.0	0.4%	11.8	100%
	13th	0.8	26.8%	0.0	0.0%	2.1	72.3%	0.0	0.0%	0.0	0.6%	0.0	0.2%	2.9	100%
	17th	2.7	13.7%	3.1	15.8%	12.5	63.7%	0.0	0.2%	0.3	1.6%	1.0	5.0%	19.7	100%
	19th	2.8	27.4%	0.6	5.5%	6.6	64.8%	0.1	0.5%	0.2	1.8%	0.0	0.1%	10.2	100%
	20th	2.7	68.6%	0.3	7.4%	0.8	19.8%	0.1	1.9%	0.0	0.0%	0.1	2.3%	3.9	100%
<b>Northeast Total</b>		<b>15.2</b>	<b>37.9%</b>	<b>4.4</b>	<b>6.5%</b>	<b>27.1</b>	<b>52.7%</b>	<b>0.2</b>	<b>0.6%</b>	<b>0.5</b>	<b>0.8%</b>	<b>1.1</b>	<b>1.6%</b>	<b>48.5</b>	<b>100%</b>
<b>Southern</b>															
	3rd	1.4	58.3%	0.0	0.3%	1.0	39.9%	0.0	1.5%	0.0	0.0%	0.0	0.0%	2.4	100%
	4th	15.7	35.2%	13.1	29.4%	14.3	32.1%	0.5	1.2%	0.3	0.7%	0.6	1.3%	44.5	100%
	10th	0.9	20.7%	0.1	1.3%	3.5	77.7%	0.0	0.1%	0.0	0.0%	0.0	0.2%	4.5	100%
	11th	1.5	83.1%	0.2	12.1%	0.1	4.9%	0.0	0.0%	0.0	0.0%	0.0	0.0%	1.8	100%
	12th	0.2	8.3%	0.1	3.0%	0.8	43.2%	0.0	0.0%	0.0	0.0%	0.9	45.5%	1.9	100%
	15th	1.0	76.1%	0.0	0.0%	0.3	23.9%	0.0	0.0%	0.0	0.0%	0.0	0.0%	1.3	100%
	16th	0.0	2.3%	0.0	0.0%	0.4	97.7%	0.0	0.0%	0.0	0.0%	0.0	0.0%	0.4	100%
<b>Southern Total</b>		<b>20.7</b>	<b>40.6%</b>	<b>13.4</b>	<b>6.6%</b>	<b>20.4</b>	<b>45.6%</b>	<b>0.6</b>	<b>0.4%</b>	<b>0.3</b>	<b>0.1%</b>	<b>1.5</b>	<b>6.7%</b>	<b>56.8</b>	<b>100%</b>
<b>Western</b>															
	6th	0.3	61.8%	0.0	0.0%	0.0	2.2%	0.2	34.5%	0.0	0.0%	0.0	1.6%	0.5	100%
	7th	0.4	88.8%	0.0	0.0%	0.1	11.2%	0.0	0.0%	0.0	0.0%	0.0	0.0%	0.5	100%
	9th	0.8	64.8%	0.2	13.2%	0.3	22.0%	0.0	0.0%	0.0	0.0%	0.0	0.0%	1.2	100%
	14th	0.6	61.5%	0.4	37.6%	0.0	0.8%	0.0	0.0%	0.0	0.0%	0.0	0.0%	0.9	100%
	21st	8.2	79.7%	0.6	5.4%	1.5	14.7%	0.0	0.1%	0.0	0.0%	0.0	0.0%	10.3	100%
	22nd	0.5	65.3%	0.0	0.0%	0.0	0.0%	0.3	34.7%	0.0	0.0%	0.0	0.0%	0.8	100%
<b>Western Total</b>		<b>10.9</b>	<b>70.3%</b>	<b>1.1</b>	<b>9.4%</b>	<b>1.8</b>	<b>8.5%</b>	<b>0.5</b>	<b>11.6%</b>	<b>0.0</b>	<b>0.0%</b>	<b>0.0</b>	<b>0.3%</b>	<b>14.3</b>	<b>100%</b>
Missing JD Data		0.2		0.2		1.5		0.0		0.2		0.0		2.2	
<b>Statewide Total</b>		<b>73.6</b>	<b>33.0%</b>	<b>50.8</b>	<b>22.7%</b>	<b>86.3</b>	<b>38.6%</b>	<b>2.8</b>	<b>1.2%</b>	<b>5.7</b>	<b>2.6%</b>	<b>4.2</b>	<b>1.9%</b>	<b>223.5</b>	<b>100%</b>

## June 2020 CDYC Supplemental Report

### CYDC Reason Detained (RD) by Judicial District

Region	JD	Pre-Adjudicated				Sentenced to Probation				Detention Sentence								Warrants/Remands				Other						DYS Committed		Missing								
		Felony		Misdemeanor		Technical Violator		New Charges		Probation Sentence		Detention Sentence		Valid Court Order (VCO) Truancy		Awaiting DSS (Social Services) Placement		Failure to Appear (FTA)		Failure to Comply (FTC)		Interstate Compact on Juveniles (ICJ) Hold		Immigration Hold		No Bond Hold		Out-of-Country Warrant		Institutional		Parole		Missing				
		#	%	#	%	#	%	#	%	#	%	#	%	#	%	#	%	#	%	#	%	#	%	#	%	#	%	#	%	#	%	#	%	#	%			
<b>Central</b>																																						
	1st	12	4	33.3%	0	0.0%	1	8.3%	0	0.0%	0	0.0%	0	0.0%	0	0.0%	0	0.0%	2	16.7%	3	25.0%	0	0.0%	0	0.0%	0	0.0%	0	0.0%	0	0.0%	0	0.0%	0	0.0%	2	16.7%
	2nd	43	21	48.8%	3	7.0%	0	0.0%	0	0.0%	0	0.0%	0	0.0%	0	0.0%	0	0.0%	4	9.3%	8	18.6%	1	2.3%	0	0.0%	0	0.0%	0	0.0%	0	0.0%	0	0.0%	0	0.0%	6	14.0%
	5th	1	1	100.0%	0	0.0%	0	0.0%	0	0.0%	0	0.0%	0	0.0%	0	0.0%	0	0.0%	0	0.0%	0	0.0%	0	0.0%	0	0.0%	0	0.0%	0	0.0%	0	0.0%	0	0.0%	0	0.0%	0	0.0%
	18th	39	16	41.0%	1	2.6%	0	0.0%	0	0.0%	0	0.0%	0	0.0%	0	0.0%	0	0.0%	1	2.6%	12	30.8%	0	0.0%	0	0.0%	0	0.0%	0	0.0%	0	0.0%	0	0.0%	0	0.0%	9	23.1%
<b>Central Total</b>		<b>95</b>	<b>42</b>	<b>44%</b>	<b>4</b>	<b>4%</b>	<b>1</b>	<b>1.1%</b>	<b>0</b>	<b>0.0%</b>	<b>0</b>	<b>0.0%</b>	<b>0</b>	<b>0.0%</b>	<b>0</b>	<b>0.0%</b>	<b>0</b>	<b>0.0%</b>	<b>7</b>	<b>7%</b>	<b>23</b>	<b>24%</b>	<b>1</b>	<b>1.1%</b>	<b>0</b>	<b>0.0%</b>	<b>0</b>	<b>0.0%</b>	<b>0</b>	<b>0.0%</b>	<b>0</b>	<b>0.0%</b>	<b>0</b>	<b>0.0%</b>	<b>0</b>	<b>0.0%</b>	<b>17</b>	<b>17.9%</b>
<b>Northeast</b>																																						
	8th	11	0	0.0%	2	18.2%	0	0.0%	0	0.0%	0	0.0%	0	0.0%	0	0.0%	0	0.0%	0	0.0%	8	72.7%	0	0.0%	0	0.0%	0	0.0%	0	0.0%	0	0.0%	0	0.0%	0	0.0%	1	9.1%
	13th	4	2	50.0%	0	0.0%	0	0.0%	0	0.0%	0	0.0%	0	0.0%	0	0.0%	0	0.0%	0	0.0%	2	50.0%	0	0.0%	0	0.0%	0	0.0%	0	0.0%	0	0.0%	0	0.0%	0	0.0%	0	0.0%
	17th	24	7	29.2%	6	25.0%	0	0.0%	0	0.0%	0	0.0%	0	0.0%	0	0.0%	0	0.0%	3	12.5%	7	29.2%	0	0.0%	0	0.0%	0	0.0%	0	0.0%	0	0.0%	0	0.0%	0	0.0%	1	4.2%
	19th	18	4	22.2%	3	16.7%	7	38.9%	0	0.0%	0	0.0%	0	0.0%	0	0.0%	0	0.0%	2	11.1%	2	11.1%	0	0.0%	0	0.0%	0	0.0%	0	0.0%	0	0.0%	0	0.0%	0	0.0%	0	0.0%
	20th	4	0	0.0%	1	25.0%	0	0.0%	0	0.0%	0	0.0%	0	0.0%	0	0.0%	0	0.0%	1	25.0%	1	25.0%	0	0.0%	0	0.0%	0	0.0%	0	0.0%	0	0.0%	0	0.0%	0	0.0%	1	25.0%
<b>Northeast Total</b>		<b>61</b>	<b>13</b>	<b>21%</b>	<b>12</b>	<b>20%</b>	<b>7</b>	<b>11.5%</b>	<b>0</b>	<b>0.0%</b>	<b>0</b>	<b>0.0%</b>	<b>0</b>	<b>0.0%</b>	<b>0</b>	<b>0.0%</b>	<b>0</b>	<b>0.0%</b>	<b>6</b>	<b>9.8%</b>	<b>20</b>	<b>33%</b>	<b>0</b>	<b>0.0%</b>	<b>0</b>	<b>0.0%</b>	<b>0</b>	<b>0.0%</b>	<b>0</b>	<b>0.0%</b>	<b>0</b>	<b>0.0%</b>	<b>0</b>	<b>0.0%</b>	<b>0</b>	<b>0.0%</b>	<b>3</b>	<b>5%</b>
<b>Southern</b>																																						
	3rd	6	5	83.3%	0	0.0%	0	0.0%	0	0.0%	0	0.0%	0	0.0%	0	0.0%	0	0.0%	1	16.7%	0	0.0%	0	0.0%	0	0.0%	0	0.0%	0	0.0%	0	0.0%	0	0.0%	0	0.0%	0	0.0%
	4th	82	26	31.7%	5	6.1%	0	0.0%	0	0.0%	0	0.0%	0	0.0%	0	0.0%	0	0.0%	5	6.1%	13	15.9%	0	0.0%	0	0.0%	0	0.0%	1	1.2%	0	0.0%	0	0.0%	32	39.0%		
	10th	9	0	0.0%	3	33.3%	0	0.0%	0	0.0%	0	0.0%	0	0.0%	0	0.0%	0	0.0%	2	22.2%	2	22.2%	0	0.0%	0	0.0%	0	0.0%	0	0.0%	0	0.0%	0	0.0%	2	22.2%		
	11th	3	0	0.0%	1	33.3%	0	0.0%	0	0.0%	0	0.0%	0	0.0%	0	0.0%	0	0.0%	1	33.3%	0	0.0%	0	0.0%	0	0.0%	0	0.0%	0	0.0%	0	0.0%	1	33.3%				
	12th	1	0	0.0%	0	0.0%	0	0.0%	0	0.0%	0	0.0%	0	0.0%	0	0.0%	0	0.0%	1	100.0%	0	0.0%	0	0.0%	0	0.0%	0	0.0%	0	0.0%	0	0.0%	0	0.0%	0	0.0%		
	15th	0	0	0.0%	0	0.0%	0	0.0%	0	0.0%	0	0.0%	0	0.0%	0	0.0%	0	0.0%	0	0.0%	0	0.0%	0	0.0%	0	0.0%	0	0.0%	0	0.0%	0	0.0%	0	0.0%	0	0.0%		
	16th	0	0	0.0%	0	0.0%	0	0.0%	0	0.0%	0	0.0%	0	0.0%	0	0.0%	0	0.0%	0	0.0%	0	0.0%	0	0.0%	0	0.0%	0	0.0%	0	0.0%	0	0.0%	0	0.0%	0	0.0%		
<b>Southern Total</b>		<b>101</b>	<b>31</b>	<b>31%</b>	<b>9</b>	<b>9%</b>	<b>0</b>	<b>0.0%</b>	<b>0</b>	<b>0.0%</b>	<b>0</b>	<b>0.0%</b>	<b>0</b>	<b>0.0%</b>	<b>0</b>	<b>0.0%</b>	<b>0</b>	<b>0.0%</b>	<b>7</b>	<b>7%</b>	<b>18</b>	<b>18%</b>	<b>0</b>	<b>0.0%</b>	<b>0</b>	<b>0.0%</b>	<b>0</b>	<b>0.0%</b>	<b>0</b>	<b>0.0%</b>	<b>1</b>	<b>1.0%</b>	<b>0</b>	<b>0.0%</b>	<b>35</b>	<b>35%</b>		
<b>Western</b>																																						
	6th	2	0	0.0%	0	0.0%	0	0.0%	0	0.0%	0	0.0%	0	0.0%	0	0.0%	0	0.0%	1	50.0%	0	0.0%	0	0.0%	0	0.0%	0	0.0%	0	0.0%	0	0.0%	0	0.0%	1	50%		
	7th	1	0	0.0%	0	0.0%	0	0.0%	1	100.0%	0	0.0%	0	0.0%	0	0.0%	0	0.0%	0	0.0%	0	0.0%	0	0.0%	0	0.0%	0	0.0%	0	0.0%	0	0.0%	0	0.0%	0	0.0%		
	9th	0	0	0.0%	0	0.0%	0	0.0%	0	0.0%	0	0.0%	0	0.0%	0	0.0%	0	0.0%	0	0.0%	0	0.0%	0	0.0%	0	0.0%	0	0.0%	0	0.0%	0	0.0%	0	0.0%	0	0.0%		
	14th	0	0	0.0%	0	0.0%	0	0.0%	0	0.0%	0	0.0%	0	0.0%	0	0.0%	0	0.0%	0	0.0%	0	0.0%	0	0.0%	0	0.0%	0	0.0%	0	0.0%	0	0.0%	0	0.0%	0	0.0%		
	21st	7	1	14.3%	2	28.6%	0	0.0%	0	0.0%	0	0.0%	0	0.0%	0	0.0%	0	0.0%	1	14.3%	3	42.9%	0	0.0%	0	0.0%	0	0.0%	0	0.0%	0	0.0%	0	0.0%	0	0.0%	0	0%
	22nd	2	0	0.0%	1	50.0%	0	0.0%	0	0.0%	0	0.0%	0	0.0%	0	0.0%	0	0.0%	0	0.0%	0	0.0%	0	0.0%	0	0.0%	0	0.0%	0	0.0%	0	0.0%	0	0.0%	1	50%		
<b>Western Total</b>		<b>12</b>	<b>1</b>	<b>8%</b>	<b>3</b>	<b>25.0%</b>	<b>0</b>	<b>0.0%</b>	<b>1</b>	<b>8.3%</b>	<b>0</b>	<b>0.0%</b>	<b>0</b>	<b>0.0%</b>	<b>0</b>	<b>0.0%</b>	<b>0</b>	<b>0.0%</b>	<b>1</b>	<b>8.3%</b>	<b>4</b>	<b>33%</b>	<b>0</b>	<b>0.0%</b>	<b>0</b>	<b>0.0%</b>	<b>0</b>	<b>0.0%</b>	<b>0</b>	<b>0.0%</b>	<b>0</b>	<b>0.0%</b>	<b>0</b>	<b>0.0%</b>	<b>2</b>	<b>17%</b>		
<b>Individual RD Totals</b>		<b>269</b>	<b>87</b>	<b>32%</b>	<b>28</b>	<b>10%</b>	<b>8</b>	<b>3.0%</b>	<b>1</b>	<b>0.4%</b>	<b>0</b>	<b>0.0%</b>	<b>0</b>	<b>0.0%</b>	<b>0</b>	<b>0.0%</b>	<b>0</b>	<b>0.0%</b>	<b>21</b>	<b>8%</b>	<b>65</b>	<b>24%</b>	<b>1</b>	<b>0.4%</b>	<b>0</b>	<b>0.0%</b>	<b>0</b>	<b>0.0%</b>	<b>0</b>	<b>0.0%</b>	<b>0</b>	<b>0.0%</b>	<b>1</b>	<b>0.4%</b>	<b>0</b>	<b>0.0%</b>	<b>57</b>	<b>21%</b>
<b>Statewide Totals</b>		<b>269</b>	<b>115</b>	<b>42.8%</b>	<b>9</b>	<b>3.3%</b>	<b>0</b>	<b>0.0%</b>	<b>0</b>	<b>0.0%</b>	<b>0</b>	<b>0.0%</b>	<b>0</b>	<b>0.0%</b>	<b>0</b>	<b>0.0%</b>	<b>0</b>	<b>0.0%</b>	<b>86</b>	<b>32.0%</b>	<b>1</b>	<b>0.4%</b>	<b>0</b>	<b>0.0%</b>	<b>0</b>	<b>0.0%</b>	<b>0</b>	<b>0.0%</b>	<b>1</b>	<b>0.4%</b>	<b>0</b>	<b>0.0%</b>	<b>57</b>	<b>21%</b>				

## Central Region CYDC Reason Detained by Judicial District June 2020 New Admits



■ CENTRAL REGION, 95 New Admits

■ 5th JD, 1 New Admits

■ 18th JD, 39 New Admits

■ 1st JD, 12 New Admits

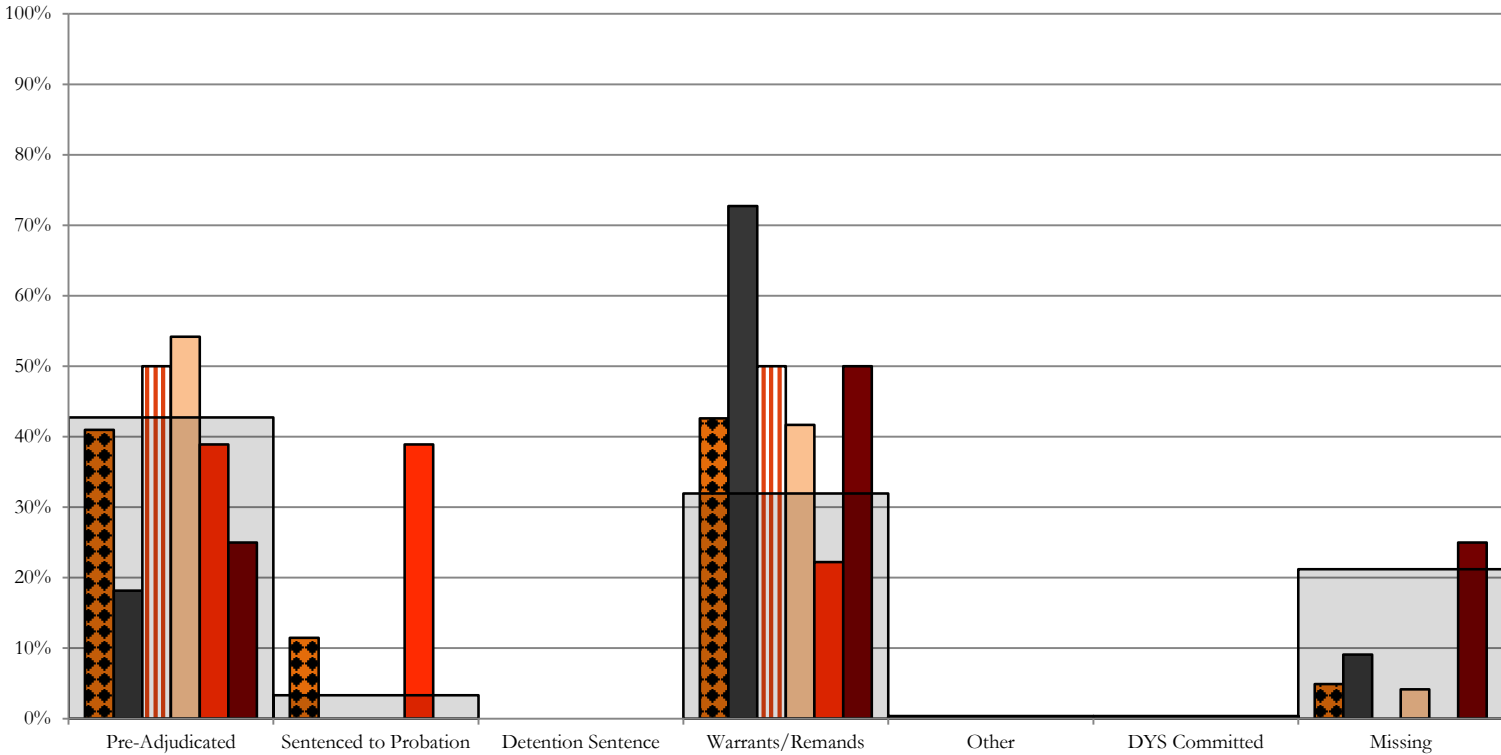
■ 2nd JD, 43 New Admits

■ STATEWIDE, 269 New Admits

# Northeast Region

## CYDC Reason Detained by Judicial District

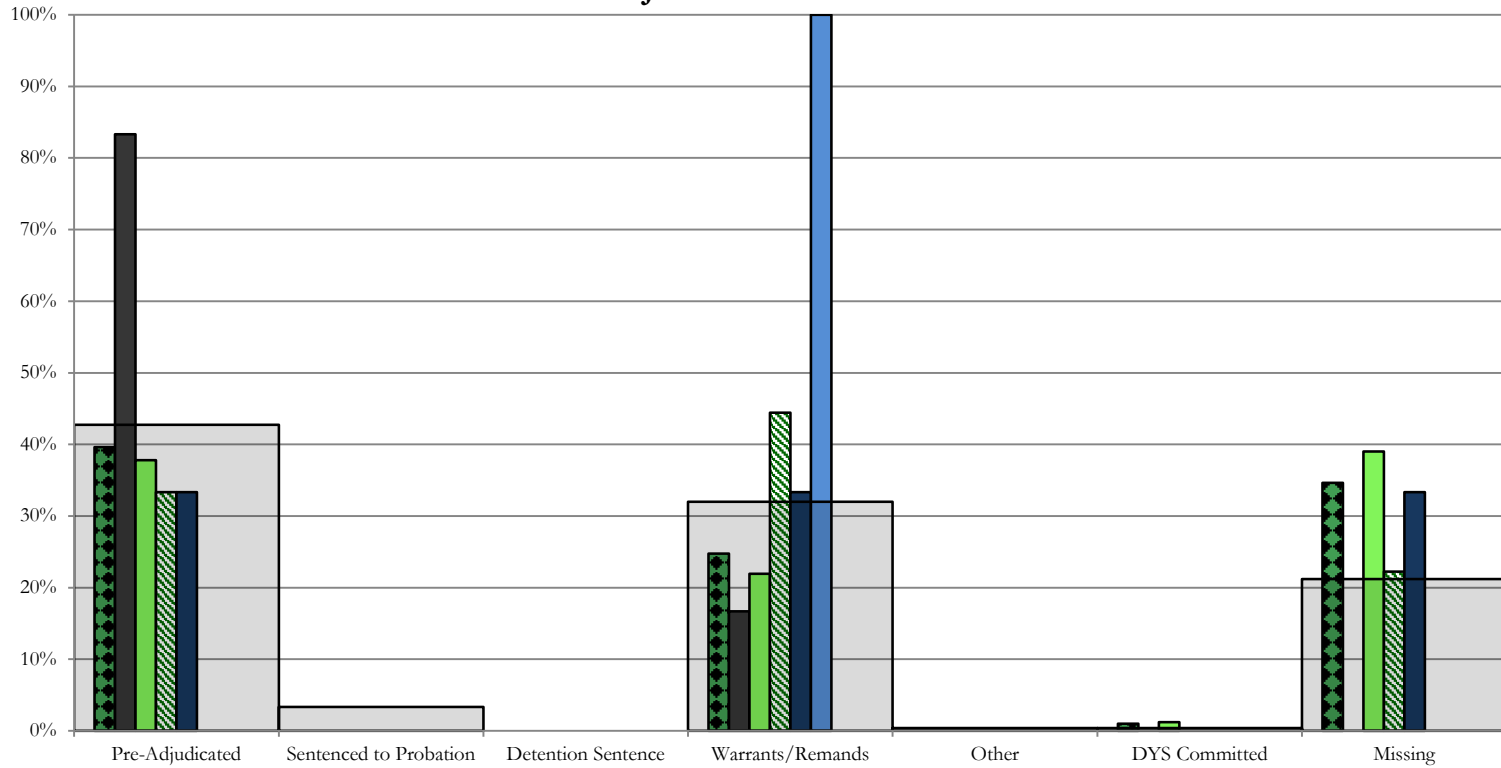
### June 2020 New Admits



- NORTHEAST REGION, 61 New Admits
- 8th JD, 11 New Admits
- 13th JD, 4 New Admits
- 17th JD, 24 New Admits
- 19th JD, 18 New Admits
- 20th JD, 4 New Admits
- STATEWIDE, 269 New Admits



## Southern Region CYDC Reason Detained by Judicial District June 2020 New Admits



■ SOUTHERN REGION, 101 New Admits

■ 4th JD, 82 New Admits

■ 11th JD, 3 New Admits

■ 15th JD, 0 New Admits

□ STATEWIDE, 269 New Admits

■ 3rd JD, 6 New Admits

■ 10th JD, 9 New Admits

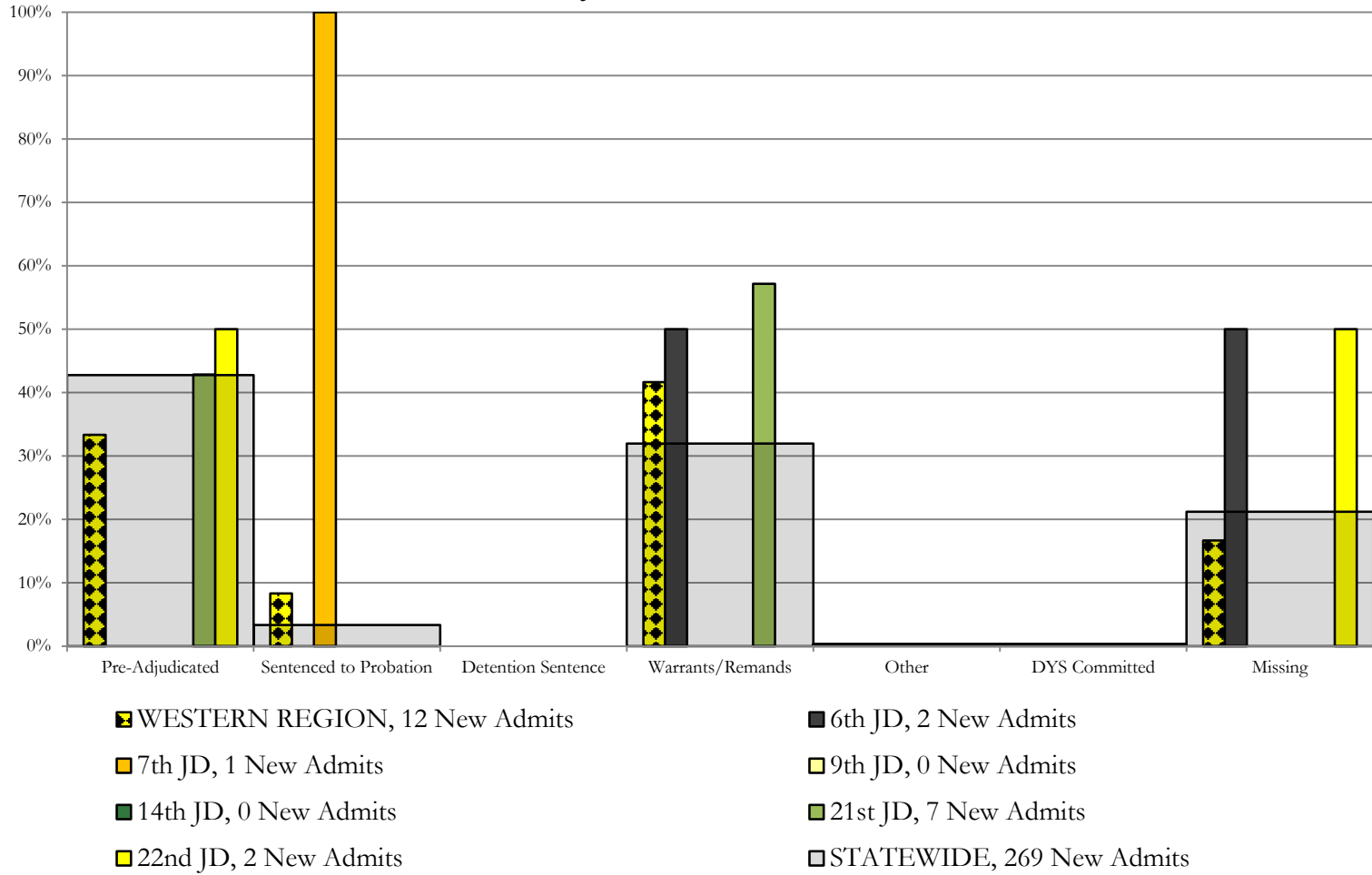
■ 12th JD, 1 New Admits

■ 16th JD, 0 New Admits

# Western Region

## CYDC Reason Detained by Judicial District

### June 2020 New Admits



## June 2020 CYDC Supplemental Report

CYDC Reason Detained (RD) by Judicial District Year to Date

Region	JD	Year to Date New Admits	Pre-Adjudicated				Sentenced to Probation				Detention Sentence								Warrants/Remands				Other				DYS Committed				Missing	
			Felony		Misdemeanor		Technical Violator		New Charges		Probation Sentence		Detention Sentence		Valid Court Order (VCO) Truancy		Awaiting DSS (Social Services) Placement		Failure to Appear (FTA)		Failure to Comply (FTC)		Interstate Compact on Juveniles (ICJ) Hold		Immigration Hold		Institutional		Parole		Missing	
			#	%	#	%	#	%	#	%	#	%	#	%	#	%	#	%	#	%	#	%	#	%	#	%	#	%	#	%	#	%
<b>Central</b>																																
	1st	343	92	26.8%	56	16.3%	38	11.1%	0	0.0%	0	0.0%	21	6.1%	0	0.0%	0	0.0%	38	11.1%	84	24.5%	1	0.3%	0	0.0%	0	0.0%	1	0.3%	12	3.5%
	2nd	620	268	43.2%	60	9.7%	0	0.0%	0	0.0%	0	0.0%	1	0.2%	0	0.0%	0	0.0%	86	13.9%	157	25.3%	8	1.3%	0	0.0%	1	0.2%	2	0.3%	37	6.0%
	5th	17	7	41.2%	2	11.8%	2	11.8%	0	0.0%	0	0.0%	2	11.8%	0	0.0%	0	0.0%	0	0.0%	4	23.5%	0	0.0%	0	0.0%	0	0.0%	0	0.0%	0	0.0%
	18th	759	227	29.9%	149	19.6%	0	0.0%	0	0.0%	0	0.0%	9	1.2%	0	0.0%	0	0.0%	47	6.2%	209	27.5%	3	0.4%	0	0.0%	1	0.1%	0	0.0%	114	15.0%
<b>Central Total</b>		<b>1,739</b>	<b>594</b>	<b>34.2%</b>	<b>267</b>	<b>15.4%</b>	<b>40</b>	<b>2.3%</b>	<b>0</b>	<b>0.0%</b>	<b>0</b>	<b>0.0%</b>	<b>33</b>	<b>1.9%</b>	<b>0</b>	<b>0.0%</b>	<b>0</b>	<b>0.0%</b>	<b>171</b>	<b>9.8%</b>	<b>454</b>	<b>26.1%</b>	<b>12</b>	<b>0.7%</b>	<b>0</b>	<b>0.0%</b>	<b>2</b>	<b>0.1%</b>	<b>3</b>	<b>0.2%</b>	<b>163</b>	<b>9.4%</b>
<b>Northeast</b>																																
	8th	246	51	20.7%	27	11.0%	1	0.4%	0	0.0%	0	0.0%	3	1.2%	0	0.0%	0	0.0%	24	9.8%	139	56.5%	0	0.0%	0	0.0%	0	0.0%	0	0.0%	1	0.4%
	13th	55	17	30.9%	11	20.0%	0	0.0%	0	0.0%	0	0.0%	2	3.6%	0	0.0%	0	0.0%	3	5.5%	21	38.2%	0	0.0%	0	0.0%	0	0.0%	0	0.0%	1	1.8%
	17th	378	125	33.1%	37	9.8%	1	0.3%	0	0.0%	0	0.0%	4	1.1%	0	0.0%	0	0.0%	44	11.6%	111	29.4%	1	0.3%	0	0.0%	1	0.3%	0	0.0%	54	14.3%
	19th	315	111	35.2%	51	16.2%	67	21.3%	0	0.0%	0	0.0%	3	1.0%	0	0.0%	0	0.0%	16	5.1%	67	21.3%	0	0.0%	0	0.0%	0	0.0%	0	0.0%	0	0.0%
	20th	79	27	34.2%	11	13.9%	5	6.3%	0	0.0%	0	0.0%	6	7.6%	0	0.0%	6	7.6%	3	3.8%	18	22.8%	0	0.0%	0	0.0%	0	0.0%	0	0.0%	3	3.8%
<b>Northeast Total</b>		<b>1,073</b>	<b>331</b>	<b>30.8%</b>	<b>137</b>	<b>12.8%</b>	<b>74</b>	<b>6.9%</b>	<b>0</b>	<b>0.0%</b>	<b>0</b>	<b>0.0%</b>	<b>18</b>	<b>1.7%</b>	<b>0</b>	<b>0.0%</b>	<b>6</b>	<b>0.6%</b>	<b>90</b>	<b>8.4%</b>	<b>356</b>	<b>33.2%</b>	<b>1</b>	<b>0.1%</b>	<b>0</b>	<b>0.0%</b>	<b>1</b>	<b>0.1%</b>	<b>0</b>	<b>0.0%</b>	<b>59</b>	<b>5.5%</b>
<b>Southern</b>																																
	3rd	27	21	77.8%	2	7.4%	0	0.0%	0	0.0%	0	0.0%	0	0.0%	0	0.0%	0	0.0%	1	3.7%	3	11.1%	0	0.0%	0	0.0%	0	0.0%	0	0.0%	0	0.0%
	4th	719	320	44.5%	76	10.6%	5	0.7%	14	1.9%	0	0.0%	3	0.4%	0	0.0%	0	0.0%	72	10.0%	153	21.3%	1	0.1%	0	0.0%	8	1.1%	0	0.0%	67	9.3%
	10th	151	46	30.5%	24	15.9%	1	0.7%	1	0.7%	0	0.0%	5	3.3%	1	0.7%	0	0.0%	29	19.2%	41	27.2%	0	0.0%	0	0.0%	0	0.0%	0	0.0%	3	2.0%
	11th	47	21	44.7%	7	14.9%	0	0.0%	0	0.0%	0	0.0%	1	2.1%	0	0.0%	0	0.0%	2	4.3%	7	14.9%	0	0.0%	0	0.0%	0	0.0%	0	0.0%	9	19.1%
	12th	21	8	38.1%	0	0.0%	1	4.8%	0	0.0%	0	0.0%	0	0.0%	0	0.0%	0	0.0%	5	23.8%	6	28.6%	0	0.0%	0	0.0%	0	0.0%	1	4.8%		
	15th	13	7	53.8%	1	7.7%	0	0.0%	0	0.0%	0	0.0%	2	15.4%	0	0.0%	0	0.0%	0	0.0%	3	23.1%	0	0.0%	0	0.0%	0	0.0%	0	0.0%	0	0.0%
	16th	11	3	27.3%	1	9.1%	1	9.1%	0	0.0%	0	0.0%	0	0.0%	0	0.0%	0	0.0%	1	9.1%	2	18.2%	0	0.0%	0	0.0%	0	0.0%	0	0.0%	3	27.3%
<b>Southern Total</b>		<b>989</b>	<b>426</b>	<b>43.1%</b>	<b>111</b>	<b>11.2%</b>	<b>8</b>	<b>0.8%</b>	<b>15</b>	<b>1.5%</b>	<b>0</b>	<b>0.0%</b>	<b>11</b>	<b>1.1%</b>	<b>1</b>	<b>0.1%</b>	<b>0</b>	<b>0.0%</b>	<b>110</b>	<b>11.1%</b>	<b>215</b>	<b>21.7%</b>	<b>1</b>	<b>0.1%</b>	<b>0</b>	<b>0.0%</b>	<b>8</b>	<b>0.8%</b>	<b>0</b>	<b>0.0%</b>	<b>83</b>	<b>8.4%</b>
<b>Western</b>																																
	6th	9	3	33.3%	1	11.1%	0	0.0%	0	0.0%	0	0.0%	0	0.0%	0	0.0%	0	0.0%	0	0.0%	2	22.2%	0	0.0%	0	0.0%	0	0.0%	0	0.0%	3	33.3%
	7th	24	7	29.2%	4	16.7%	0	0.0%	9	37.5%	0	0.0%	3	12.5%	0	0.0%	0	0.0%	1	4.2%	0	0.0%	0	0.0%	0	0.0%	0	0.0%	0	0.0%	0	0.0%
	9th	26	9	34.6%	3	11.5%	3	11.5%	0	0.0%	0	0.0%	0	0.0%	0	0.0%	0	0.0%	1	3.8%	9	34.6%	0	0.0%	0	0.0%	0	0.0%	1	3.8%		
	14th	9	2	22.2%	0	0.0%	1	11.1%	0	0.0%	0	0.0%	0	0.0%	0	0.0%	0	0.0%	0	0.0%	2	22.2%	0	0.0%	0	0.0%	0	0.0%	4	44.4%		
	21st	200	54	27.0%	31	15.5%	0	0.0%	0	0.0%	0	0.0%	2	1.0%	0	0.0%	0	0.0%	8	4.0%	97	48.5%	0	0.0%	0	0.0%	0	0.0%	8	4.0%		
	22nd	14	4	28.6%	2	14.3%	0	0.0%	0	0.0%	0	0.0%	0	0.0%	0	0.0%	0	0.0%	0	0.0%	6	42.9%	0	0.0%	0	0.0%	0	0.0%	2	14.3%		
<b>Western Total</b>		<b>282</b>	<b>79</b>	<b>28.0%</b>	<b>41</b>	<b>14.5%</b>	<b>4</b>	<b>1.4%</b>	<b>9</b>	<b>3.2%</b>	<b>0</b>	<b>0.0%</b>	<b>5</b>	<b>1.8%</b>	<b>0</b>	<b>0.0%</b>	<b>0</b>	<b>0.0%</b>	<b>10</b>	<b>3.5%</b>	<b>116</b>	<b>41.1%</b>	<b>0</b>	<b>0.0%</b>	<b>0</b>	<b>0.0%</b>	<b>0</b>	<b>0.0%</b>	<b>18</b>	<b>6.4%</b>		
<b>Individual RD Totals</b>		<b>4,083</b>	<b>1430</b>	<b>35.0%</b>	<b>556</b>	<b>13.6%</b>	<b>126</b>	<b>3.1%</b>	<b>24</b>	<b>0.6%</b>	<b>0</b>	<b>0.0%</b>	<b>67</b>	<b>1.6%</b>	<b>1</b>	<b>0.0%</b>	<b>6</b>	<b>0.1%</b>	<b>381</b>	<b>9.3%</b>	<b>1141</b>	<b>27.9%</b>	<b>14</b>	<b>0.3%</b>	<b>0</b>	<b>0.0%</b>	<b>11</b>	<b>0.3%</b>	<b>3</b>	<b>0.1%</b>	<b>323</b>	<b>7.9%</b>
<b>Statewide Totals</b>		<b>4,083</b>	<b>1,986</b>	<b>48.6%</b>	<b>150</b>	<b>3.7%</b>	<b>74</b>	<b>1.8%</b>	<b>1522</b>	<b>37.3%</b>	<b>14</b>	<b>0.3%</b>	<b>323</b>	<b>7.9%</b>																		

# June 2020 CYDC Supplemental Report

## DYS Detention Maximum Youth Served by Judicial District<sup>1</sup>

Region	JD	Detention Capacity	Detention ADP		Maximum Youth Served on a Single Day <sup>2,3</sup>			
			June 2020	YTD	June 2020		YTD	
					Number of Youth	% of Detention Capacity	Number of Youth	% of Detention Capacity
<i>Central</i>								
	1st	35	11.1	17.7	17	48.6%	34	97.1%
	2nd	49	28.0	35.2	34	69.4%	52	106.1%
	5th	4	1.0	0.9	2	50.0%	4	100.0%
	18th	48	38.0	47.8	41	85.4%	71	147.9%
<b>Central Region</b>		<b>136</b>	<b>78.1</b>	<b>101.6</b>	<b>85</b>	<b>62.5%</b>	<b>136</b>	<b>100.0%</b>
<i>Northeast</i>								
	8th	14	4.1	11.8	6	42.9%	21	150.0%
	13th	5	1.5	2.9	3	60.0%	8	160.0%
	17th	28	12.4	19.7	19	67.9%	30	107.1%
	19th	18	6.9	10.2	11	61.1%	20	111.1%
	20th	8	2.6	3.9	5	62.5%	8	100.0%
<b>Northeast Region</b>		<b>73</b>	<b>27.6</b>	<b>48.5</b>	<b>33</b>	<b>45.2%</b>	<b>68</b>	<b>93.2%</b>
<i>Southern</i>								
	3rd	2	2.4	2.4	6	300.0%	8	400.0%
	4th	54	35.9	44.5	42	77.8%	61	113.0%
	10th	14	2.4	4.5	5	35.7%	11	78.6%
	11th	3	0.8	1.8	2	66.7%	6	200.0%
	12th	4	1.1	1.9	2	50.0%	6	150.0%
	15th	2	0.9	1.3	1	50.0%	5	250.0%
	16th	3	0.0	0.4	0	0.0%	3	100.0%
<b>Southern Region</b>		<b>82</b>	<b>43.5</b>	<b>56.8</b>	<b>55</b>	<b>67.1%</b>	<b>76</b>	<b>92.7%</b>
<i>Western</i>								
	6th	5	0.6	0.5	1	20.0%	2	40.0%
	7th	5	0.1	0.5	1	20.0%	4	80.0%
	9th	3	2.1	1.2	3	100.0%	4	133.3%
	14th	3	0.0	0.9	0	0.0%	3	100.0%
	21st	16	5.0	10.3	7	43.8%	20	125.0%
	22nd	4	0.4	0.8	1	25.0%	5	125.0%
<b>Western Region</b>		<b>36</b>	<b>8.1</b>	<b>14.3</b>	<b>11</b>	<b>30.6%</b>	<b>24</b>	<b>66.7%</b>
<i>Missing JD or Multiple JDs</i>			1.1	2.2				
<b>Statewide</b>		<b>327</b>	<b>158.4</b>	<b>223.5</b>	<b>172</b>	<b>52.6%</b>	<b>283</b>	<b>86.5%</b>

<sup>1</sup> Maximum youth served is the highest number of youth in detention on a single day during the month or fiscal year.

<sup>2</sup> Regional figures are not the sum of judicial districts, but represent the maximum count on one day for the entire region.

<sup>3</sup> State figures are not the sum of regional figures, but represent the maximum count on one day for the entire state.

## June 2020 CYDC Supplemental Report

### CYDC Community ADP by Judicial District

Region	JD	Committed		Diversion		ICJ		Municipal		Pre-Adjudicated		Sentenced		VCO		Total	
		June 2020	YTD	June 2020	YTD	June 2020	YTD	June 2020	YTD	June 2020	YTD	June 2020	YTD	June 2020	YTD	June 2020	YTD
<i>Central</i>																	
	1st	2.0	2.1	0.0	2.0	0.0	0.0	15.0	49.6	200.1	189.9	31.0	35.5	0.0	0.0	248.1	279.1
	2nd	3.0	2.6	1.0	0.9	0.6	0.3	0.0	0.0	147.1	134.1	32.7	32.6	0.0	0.0	184.4	170.4
	5th	0.0	0.0	6.0	9.8	0.0	0.0	0.0	0.0	6.6	9.6	32.8	36.4	0.0	0.0	45.4	55.8
	18th	1.0	1.8	2.0	1.2	0.0	0.2	1.0	1.0	280.4	288.1	33.4	32.1	0.0	0.0	317.8	324.4
<b>Central Total</b>		<b>6.0</b>	<b>6.5</b>	<b>9.0</b>	<b>13.8</b>	<b>0.6</b>	<b>0.4</b>	<b>16.0</b>	<b>50.6</b>	<b>634.2</b>	<b>621.7</b>	<b>129.9</b>	<b>136.6</b>	<b>0.0</b>	<b>0.0</b>	<b>795.7</b>	<b>829.7</b>
<i>Northeast</i>																	
	8th	0.0	0.0	5.0	5.3	0.0	0.0	0.0	0.0	92.9	78.7	62.0	53.4	0.0	0.0	159.8	137.4
	13th	0.0	0.0	0.0	0.0	0.0	0.0	13.9	23.9	15.5	14.9	2.1	3.0	1.0	0.7	32.5	42.5
	17th	1.0	0.7	1.2	1.0	0.0	0.0	0.0	0.0	296.7	276.1	68.3	68.0	0.0	0.4	367.1	346.2
	19th	1.3	0.5	0.0	0.0	0.0	0.0	0.0	0.9	76.4	77.2	14.7	23.3	0.0	0.2	92.4	102.1
	20th	0.0	0.3	34.4	48.3	0.0	0.0	1.0	1.0	50.1	57.3	5.3	7.7	0.0	0.0	90.8	114.6
<b>Northeast Total</b>		<b>2.3</b>	<b>1.5</b>	<b>40.6</b>	<b>54.6</b>	<b>0.0</b>	<b>0.0</b>	<b>14.9</b>	<b>25.8</b>	<b>531.6</b>	<b>504.3</b>	<b>152.3</b>	<b>155.4</b>	<b>1.0</b>	<b>1.3</b>	<b>742.6</b>	<b>742.8</b>
<i>Southern</i>																	
	3rd	0.0	0.0	0.0	0.0	0.0	0.0	0.0	0.0	13.5	12.5	2.0	4.7	0.0	0.0	15.5	17.2
	4th	2.3	0.8	0.0	0.0	0.0	0.0	61.0	49.7	188.0	132.1	48.8	41.0	0.0	0.0	300.1	223.5
	10th	0.7	0.1	0.0	0.0	0.0	0.0	0.0	0.6	11.9	16.4	5.6	3.4	0.0	0.4	18.1	20.8
	11th	0.0	0.0	0.0	0.0	0.0	0.0	11.1	5.6	22.1	14.2	8.8	9.6	0.0	0.0	42.0	29.4
	12th	0.0	0.0	2.0	2.8	0.0	0.0	2.0	1.2	9.7	6.7	1.0	1.3	0.0	0.0	14.7	12.0
	15th	0.0	0.0	1.0	3.2	0.0	0.0	0.0	0.0	5.4	2.6	7.4	7.7	0.0	0.0	13.8	13.6
	16th	0.0	0.0	0.0	0.0	0.0	0.0	0.0	0.0	6.0	5.1	1.0	0.5	16.0	16.5	23.0	22.1
<b>Southern Total</b>		<b>2.9</b>	<b>0.8</b>	<b>3.0</b>	<b>6.1</b>	<b>0.0</b>	<b>0.0</b>	<b>74.1</b>	<b>57.1</b>	<b>256.6</b>	<b>189.6</b>	<b>74.6</b>	<b>68.2</b>	<b>16.0</b>	<b>16.9</b>	<b>427.2</b>	<b>338.6</b>
<i>Western</i>																	
	6th	0.0	0.0	0.0	0.0	0.0	0.0	5.0	2.7	9.0	6.3	0.0	0.0	0.0	0.0	14.0	9.0
	7th	0.0	0.0	13.1	16.2	0.0	0.0	2.1	1.6	16.0	11.3	5.5	4.7	0.0	0.0	36.7	33.8
	9th	0.0	0.0	0.5	3.6	0.0	0.0	0.3	5.4	11.4	12.1	0.0	0.5	0.0	0.0	12.2	21.6
	14th	0.0	0.0	3.0	6.6	0.0	0.0	1.0	0.4	3.0	4.7	1.0	0.9	0.0	0.0	8.0	12.6
	21st	0.7	0.1	0.0	0.0	0.0	0.0	0.0	0.0	39.4	54.9	23.3	21.7	0.0	0.0	63.5	76.6
	22nd	0.0	0.0	0.0	0.0	0.0	0.0	0.0	0.0	4.8	5.0	9.6	10.8	0.0	0.0	14.4	15.8
<b>Western Total</b>		<b>0.7</b>	<b>0.1</b>	<b>16.6</b>	<b>26.4</b>	<b>0.0</b>	<b>0.0</b>	<b>8.3</b>	<b>10.0</b>	<b>83.6</b>	<b>94.2</b>	<b>39.4</b>	<b>38.6</b>	<b>0.0</b>	<b>0.0</b>	<b>148.7</b>	<b>169.3</b>
<b>Statewide Total</b>		<b>11.9</b>	<b>8.9</b>	<b>69.2</b>	<b>100.9</b>	<b>0.6</b>	<b>0.5</b>	<b>113.3</b>	<b>143.4</b>	<b>1,506.1</b>	<b>1,409.8</b>	<b>396.2</b>	<b>398.7</b>	<b>17.0</b>	<b>18.2</b>	<b>2,114.3</b>	<b>2,080.4</b>