

May 2020*

FY 2019-2020

CYDC JDSAG SUPPLEMENTAL REPORT

Prepared by the Division of Youth Services (DYS)

Data Management & Analysis

June 29, 2020

* Following the initial announcement of positive cases of COVID-19 in Colorado on March 5th, data presented in this report largely reflect COVID-19 response and Executive Order (EO) compliance across the detained, committed, and paroled populations. The statewide detention bed availability was temporarily reduced to 200 effective April 21, 2020 COB; DYS plans to return to official allocations (327) and bed borrowing practices upon expiration of the EO. Due to the temporary nature of the reduction, DYS continues to utilize official detention bed allocations within this report. Commitment population reductions and Parole population increases are a direct result of the Division's EO response, releasing an unprecedented number of youth from residential placement to parole.



COLORADO

Division of Youth Services

Office of Children, Youth & Families

May 2020 CYDC Supplemental Report

DYS Commitment ADP & New Commitments by Judicial District

Region	JD ¹	2020 Population Estimates ²	ADP ³		New Commitments		
			May 2020	YTD	May 2020	YTD	YTD Rate ⁴
<i>Central</i>							
	1st	54,722	35.2	64.4	2	13	2.4
	2nd	57,309	61.9	72.9	3	36	6.3
	5th	9,320	2.1	4.0	0	1	1.1
	18th	115,605	67.3	73.9	6	38	3.3
Central Total		236,956	166.5	215.1	11	88	3.7
<i>Northeast</i>							
	8th	34,597	19.1	18.2	3	15	4.3
	13th	8,496	3.0	2.6	0	3	3.5
	17th	69,940	36.2	43.2	1	26	3.7
	19th	38,548	30.2	37.1	2	25	6.5
	20th	31,121	3.1	3.9	0	1	0.3
Northeast Total		182,702	91.7	105.0	6	70	3.8
<i>Southern</i>							
	3rd	1,817	1.1	2.7	1	1	5.5
	4th	83,065	57.2	65.9	3	31	3.7
	10th	18,110	8.1	9.7	1	6	3.3
	11th	7,264	2.8	3.0	0	3	4.1
	12th	5,399	2.0	4.0	0	3	5.6
	15th	2,125	4.0	2.9	0	1	4.7
	16th	2,762	2.0	2.2	0	1	3.6
Southern Total		120,542	77.2	90.4	5	46	3.8
<i>Western</i>							
	6th	7,285	0.6	1.5	0	0	0.0
	7th	10,595	4.1	6.6	0	4	3.8
	9th	8,578	1.0	3.8	0	0	0.0
	14th	5,752	0.0	0.0	0	0	0.0
	21st	16,322	26.2	32.5	2	16	9.8
	22nd	3,063	6.0	7.3	0	6	19.6
Western Total		51,595	37.9	51.6	2	26	5.0
Statewide Total		591,795	373.3	462.2	24	230	3.9

¹ JD represents the judicial district in which the client was committed. Regional totals are a sum of their respective judicial districts. Regional totals reported here may differ slightly from those reported in the Monthly Population Report, where region is defined by active caseloads.

² Source: DOLA 2020 Estimates.

³ Due to rounding, totals shown may not be an exact sum of the subtotals.

⁴ Per 10,000 youth in the population.

May 2020 CYDC Supplemental Report

DYS Detention ADP and New Detention Admissions by Judicial District

Region	JD	2020 Population Estimates ¹	ADP		New Admits		
			May 2020	YTD	May 2020	YTD	YTD New Admit Rate ²
<i>Central</i>							
	1st	54,722	15.1	18.3	13	330	60.3
	2nd	57,309	27.7	35.8	37	578	100.9
	5th	9,320	1.0	0.9	1	16	17.2
	18th	115,605	38.8	48.8	40	721	62.4
Central Total		236,956	82.6	103.7	91	1,645	69.4
<i>Northeast</i>							
	8th	34,597	6.6	12.5	14	235	67.9
	13th	8,496	1.8	3.0	1	51	60.0
	17th	69,940	13.9	20.3	20	354	50.6
	19th	38,548	7.1	10.5	17	297	77.0
	20th	31,121	2.6	4.1	2	75	24.1
Northeast Total		182,702	32.0	50.4	54	1,012	55.4
<i>Southern</i>							
	3rd	1,817	1.2	2.4	3	21	115.6
	4th	83,065	37.7	45.3	49	637	76.7
	10th	18,110	3.0	4.7	7	142	78.4
	11th	7,264	1.9	1.9	2	44	60.6
	12th	5,399	1.0	1.9	1	20	37.0
	15th	2,125	0.5	1.4	1	13	61.2
	16th	2,762	0.0	0.4	0	11	39.8
Southern Total		120,542	45.3	58.0	63	888	73.7
<i>Western</i>							
	6th	7,285	0.4	0.5	0	7	9.6
	7th	10,595	0.2	0.5	2	23	21.7
	9th	8,578	1.9	1.1	5	26	30.3
	14th	5,752	0.6	1.0	0	9	15.6
	21st	16,322	7.3	10.8	13	193	118.2
	22nd	3,063	0.2	0.9	1	12	39.2
Western Total		51,595	10.6	14.8	21	270	52.3
<i>Missing JD or Multiple JDs</i>			3.5	2.3			
Statewide Total		591,795	174.0	229.3	229	3,815	64.5

¹ Source: DOLA 2020 Estimates.

² Per 10,000 youth in the population.

May 2020 CYDC Supplemental Report

DYS Detention LOS by Judicial District				
Region	JD	YTD Detention Releases	YTD LOS (days)	LOS (days) Compared to State AVG
<i>Central</i>				
	1st	320	17.0	-2.1
	2nd	588	17.9	-1.2
	5th	16	11.7	-7.4
	18th	709	19.8	0.8
Central Total		1,633	18.5	-0.6
<i>Northeast</i>				
	8th	238	16.7	-2.3
	13th	52	17.8	-1.3
	17th	358	15.4	-3.7
	19th	299	11.5	-7.6
	20th	81	17.5	-1.6
Northeast Total		1,028	14.9	-4.2
<i>Southern</i>				
	3rd	28	18.2	-0.9
	4th	623	22.5	3.4
	10th	143	8.7	-10.4
	11th	45	11.9	-7.2
	12th	20	18.4	-0.7
	15th	12	29.8	10.7
	16th	11	10.8	-8.3
Southern Total		882	19.4	0.4
<i>Western</i>				
	6th	8	17.8	-1.3
	7th	26	5.7	-13.4
	9th	27	16.1	-3.0
	14th	9	37.1	18.0
	21st	185	13.6	-5.5
	22nd	14	23.1	4.0
Western Total		269	14.5	-4.6
Statewide Total		3,839	19.1	-

May 2020 CDYC Supplemental Report

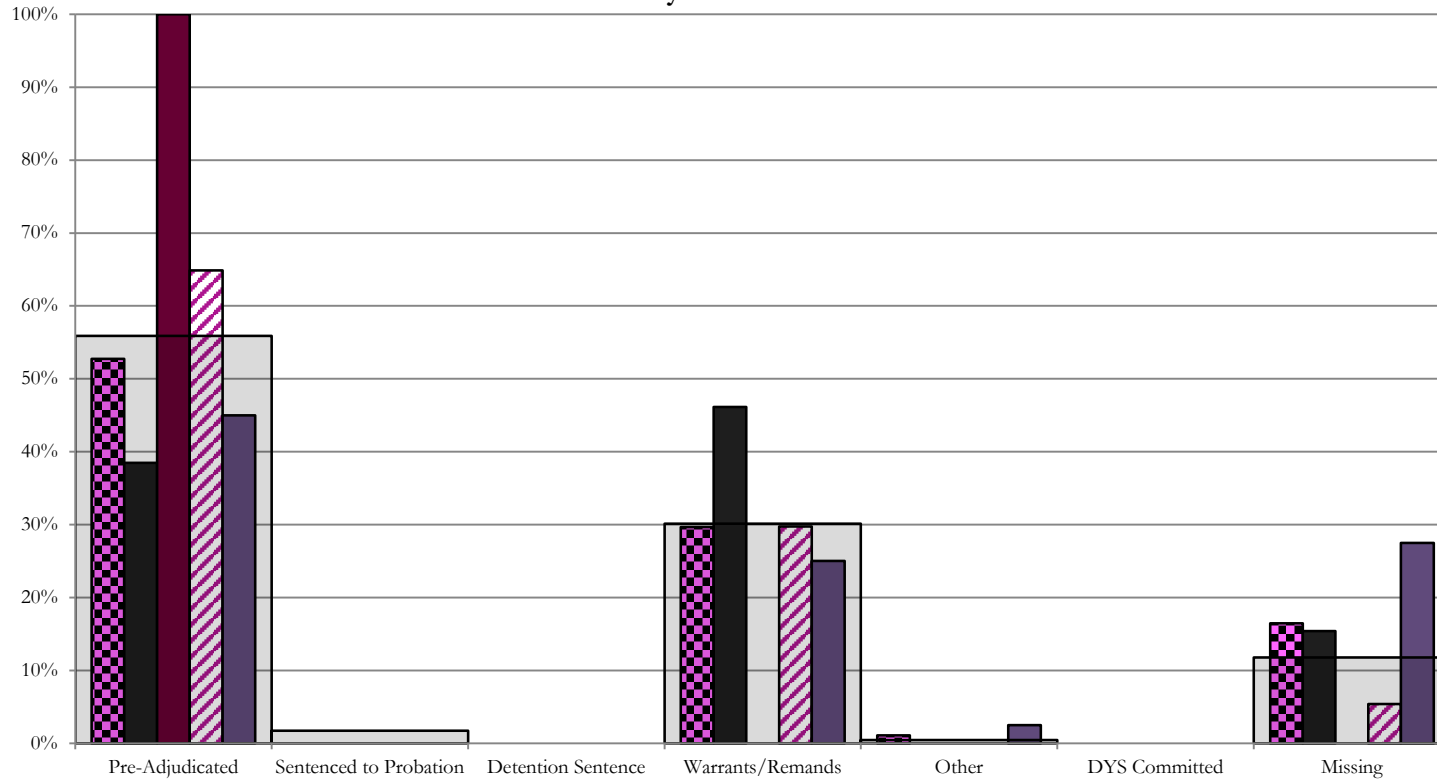
CYDC Reason Detained (RD) by Judicial District

Region	JD	Monthly New Admits		Pre-Adjudicated		Sentenced to Probation		Detention Sentence				Warrants/Remands		Other				DYS Committed		Missing																
				Felony	Misdemeanor	Technical Violator	New Charges	Probation Sentence	Detention Sentence	Valid Court Order (VCO) Truancy	Awaiting DSS (Social Services) Placement	Failure to Appear (FTA)	Failure to Comply (FTC)	Interstate Compact on Juveniles (ICJ) Hold	Immigration Hold	No Bond Hold	Out-of-Country Warrant	Institutional	Parole	Missing																
		#	%	#	%	#	%	#	%	#	%	#	%	#	%	#	%	#	%	#	%	#	%													
Central																																				
	1st	13	4	30.8%	1	7.7%	0	0.0%	0	0.0%	0	0.0%	0	0.0%	0	0.0%	0	0.0%	1	7.7%	5	38.5%	0	0.0%	0	0.0%	0	0.0%	0	0.0%	0	0.0%	2	15.4%		
	2nd	37	21	56.8%	3	8.1%	0	0.0%	0	0.0%	0	0.0%	0	0.0%	0	0.0%	0	0.0%	4	10.8%	7	18.9%	0	0.0%	0	0.0%	0	0.0%	0	0.0%	0	0.0%	2	5.4%		
	5th	1	0	0.0%	1	100.0%	0	0.0%	0	0.0%	0	0.0%	0	0.0%	0	0.0%	0	0.0%	0	0.0%	0	0.0%	0	0.0%	0	0.0%	0	0.0%	0	0.0%	0	0.0%	0	0.0%		
	18th	40	10	25.0%	8	20.0%	0	0.0%	0	0.0%	0	0.0%	0	0.0%	0	0.0%	0	0.0%	2	5.0%	8	20.0%	1	2.5%	0	0.0%	0	0.0%	0	0.0%	0	0.0%	11	27.5%		
Central Total		91	35	38%	13	14%	0	0.0%	0	0.0%	0	0.0%	0	0.0%	0	0.0%	0	0.0%	7	8%	20	22%	1	1.1%	0	0.0%	0	0.0%	0	0.0%	0	0.0%	0	0.0%	15	16.5%
Northeast																																				
	8th	14	2	14.3%	0	0.0%	0	0.0%	0	0.0%	0	0.0%	0	0.0%	0	0.0%	0	0.0%	1	7.1%	6	42.9%	0	0.0%	0	0.0%	0	0.0%	0	0.0%	0	0.0%	0	0.0%	5	35.7%
	13th	1	0	0.0%	0	0.0%	0	0.0%	0	0.0%	0	0.0%	0	0.0%	0	0.0%	0	0.0%	1	100.0%	0	0.0%	0	0.0%	0	0.0%	0	0.0%	0	0.0%	0	0.0%	0	0.0%	0	0.0%
	17th	20	8	40.0%	2	10.0%	0	0.0%	0	0.0%	0	0.0%	0	0.0%	0	0.0%	0	0.0%	0	0.0%	6	30.0%	0	0.0%	0	0.0%	0	0.0%	0	0.0%	0	0.0%	4	20.0%		
	19th	17	11	64.7%	2	11.8%	2	11.8%	0	0.0%	0	0.0%	0	0.0%	0	0.0%	0	0.0%	0	0.0%	2	11.8%	0	0.0%	0	0.0%	0	0.0%	0	0.0%	0	0.0%	0	0.0%	0	0.0%
	20th	2	2	100.0%	0	0.0%	0	0.0%	0	0.0%	0	0.0%	0	0.0%	0	0.0%	0	0.0%	0	0.0%	0	0.0%	0	0.0%	0	0.0%	0	0.0%	0	0.0%	0	0.0%	0	0.0%	0	0.0%
Northeast Total		54	23	43%	4	7%	2	3.7%	0	0.0%	0	0.0%	0	0.0%	0	0.0%	0	0.0%	2	3.7%	14	26%	0	0.0%	0	0.0%	0	0.0%	0	0.0%	0	0.0%	0	0.0%	9	17%
Southern																																				
	3rd	3	1	33.3%	0	0.0%	0	0.0%	0	0.0%	0	0.0%	0	0.0%	0	0.0%	0	0.0%	0	0.0%	2	66.7%	0	0.0%	0	0.0%	0	0.0%	0	0.0%	0	0.0%	0	0.0%	0	0.0%
	4th	49	28	57.1%	10	20.4%	1	2.0%	0	0.0%	0	0.0%	0	0.0%	0	0.0%	0	0.0%	1	2.0%	8	16.3%	0	0.0%	0	0.0%	0	0.0%	0	0.0%	0	0.0%	0	0.0%	1	2.0%
	10th	7	3	42.9%	1	14.3%	0	0.0%	0	0.0%	0	0.0%	0	0.0%	0	0.0%	0	0.0%	0	0.0%	2	28.6%	0	0.0%	0	0.0%	0	0.0%	0	0.0%	0	0.0%	0	0.0%	0	0.0%
	11th	2	0	0.0%	0	0.0%	0	0.0%	0	0.0%	0	0.0%	0	0.0%	0	0.0%	0	0.0%	1	50.0%	0	0.0%	0	0.0%	0	0.0%	0	0.0%	0	0.0%	0	0.0%	1	50.0%		
	12th	1	0	0.0%	0	0.0%	0	0.0%	0	0.0%	0	0.0%	0	0.0%	0	0.0%	0	0.0%	1	100.0%	0	0.0%	0	0.0%	0	0.0%	0	0.0%	0	0.0%	0	0.0%	0	0.0%	0	0.0%
	15th	1	1	100.0%	0	0.0%	0	0.0%	0	0.0%	0	0.0%	0	0.0%	0	0.0%	0	0.0%	0	0.0%	0	0.0%	0	0.0%	0	0.0%	0	0.0%	0	0.0%	0	0.0%	0	0.0%	0	0.0%
	16th	0	0	0.0%	0	0.0%	0	0.0%	0	0.0%	0	0.0%	0	0.0%	0	0.0%	0	0.0%	0	0.0%	0	0.0%	0	0.0%	0	0.0%	0	0.0%	0	0.0%	0	0.0%	0	0.0%	0	0.0%
Southern Total		63	33	52%	11	17%	1	1.6%	0	0.0%	0	0.0%	0	0.0%	0	0.0%	0	0.0%	4	6%	12	19%	0	0.0%	0	0.0%	0	0.0%	0	0.0%	0	0.0%	0	0.0%	2	3%
Western																																				
	6th	0	0	0.0%	0	0.0%	0	0.0%	0	0.0%	0	0.0%	0	0.0%	0	0.0%	0	0.0%	0	0.0%	0	0.0%	0	0.0%	0	0.0%	0	0.0%	0	0.0%	0	0.0%	0	0.0%	0	0.0%
	7th	2	2	100.0%	0	0.0%	0	0.0%	0	0.0%	0	0.0%	0	0.0%	0	0.0%	0	0.0%	0	0.0%	0	0.0%	0	0.0%	0	0.0%	0	0.0%	0	0.0%	0	0.0%	0	0.0%	0	0.0%
	9th	5	1	20.0%	1	20.0%	1	20.0%	0	0.0%	0	0.0%	0	0.0%	0	0.0%	0	0.0%	0	0.0%	1	20.0%	0	0.0%	0	0.0%	0	0.0%	0	0.0%	0	0.0%	0	0.0%	1	20%
	14th	0	0	0.0%	0	0.0%	0	0.0%	0	0.0%	0	0.0%	0	0.0%	0	0.0%	0	0.0%	0	0.0%	0	0.0%	0	0.0%	0	0.0%	0	0.0%	0	0.0%	0	0.0%	0	0.0%	0	0.0%
	21st	13	3	23.1%	1	7.7%	0	0.0%	0	0.0%	0	0.0%	0	0.0%	0	0.0%	0	0.0%	0	0.0%	9	69.2%	0	0.0%	0	0.0%	0	0.0%	0	0.0%	0	0.0%	0	0.0%	0	0.0%
	22nd	1	1	100.0%	0	0.0%	0	0.0%	0	0.0%	0	0.0%	0	0.0%	0	0.0%	0	0.0%	0	0.0%	0	0.0%	0	0.0%	0	0.0%	0	0.0%	0	0.0%	0	0.0%	0	0.0%	0	0.0%
Western Total		21	7	33%	2	9.5%	1	4.8%	0	0.0%	0	0.0%	0	0.0%	0	0.0%	0	0.0%	0	0.0%	10	48%	0	0.0%	0	0.0%	0	0.0%	0	0.0%	0	0.0%	0	0.0%	1	5%
Individual RD Totals		229	98	43%	30	13%	4	1.7%	0	0.0%	0	0.0%	0	0.0%	0	0.0%	0	0.0%	13	6%	56	24%	1	0.4%	0	0.0%	0	0.0%	0	0.0%	0	0.0%	0	0.0%	27	12%
Statewide Totals		229	128	55.9%	4	1.7%	0	0.0%	0	0.0%	0	0.0%	0	0.0%	0	0.0%	0	0.0%	69	30.1%	1	0.4%	0	0.0%	0	0.0%	0	0.0%	0	0.0%	0	0.0%	27	12%		

Central Region

CYDC Reason Detained by Judicial District

May 2020 New Admits



■ CENTRAL REGION, 91 New Admits

■ 5th JD, 1 New Admits

■ 18th JD, 40 New Admits

■ 1st JD, 13 New Admits

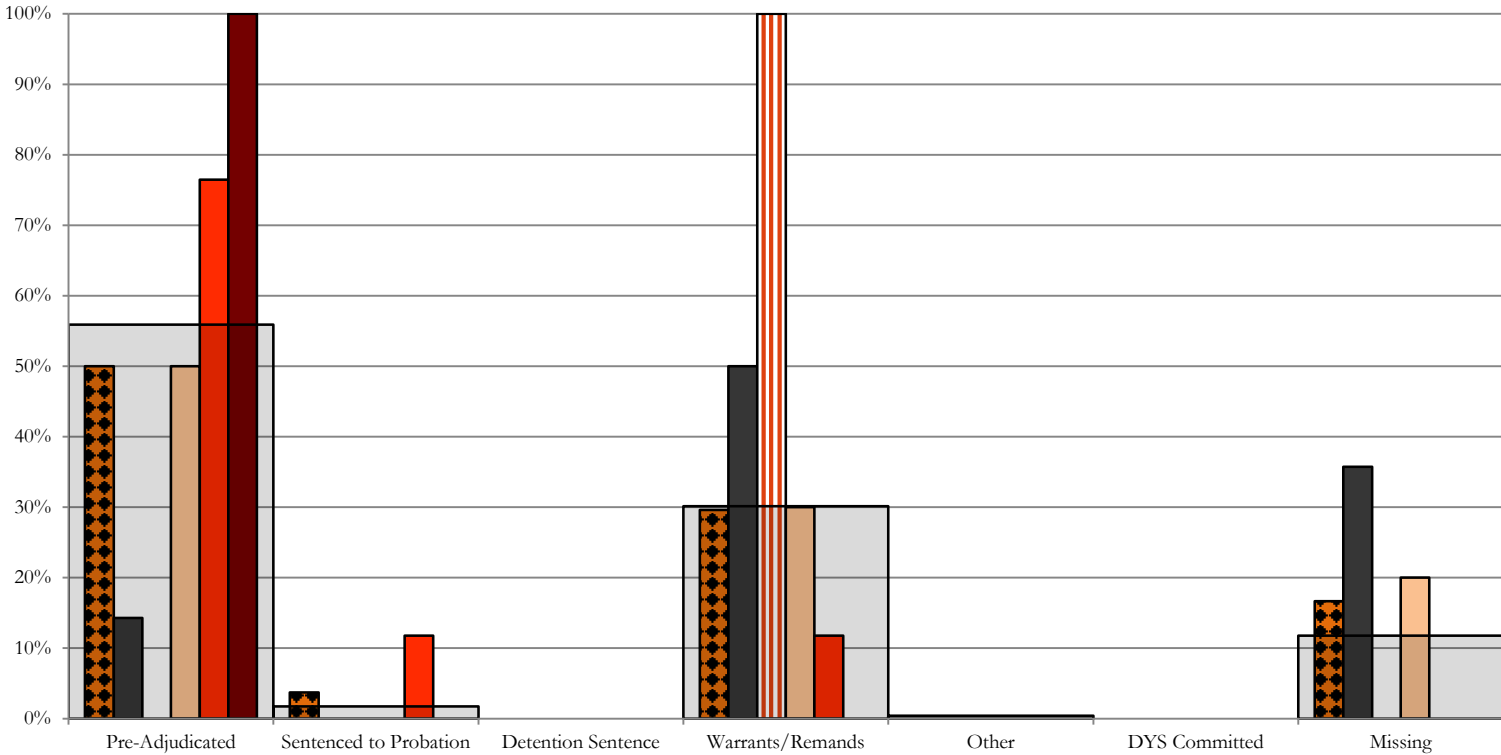
■ 2nd JD, 37 New Admits

■ STATEWIDE, 229 New Admits

Northeast Region

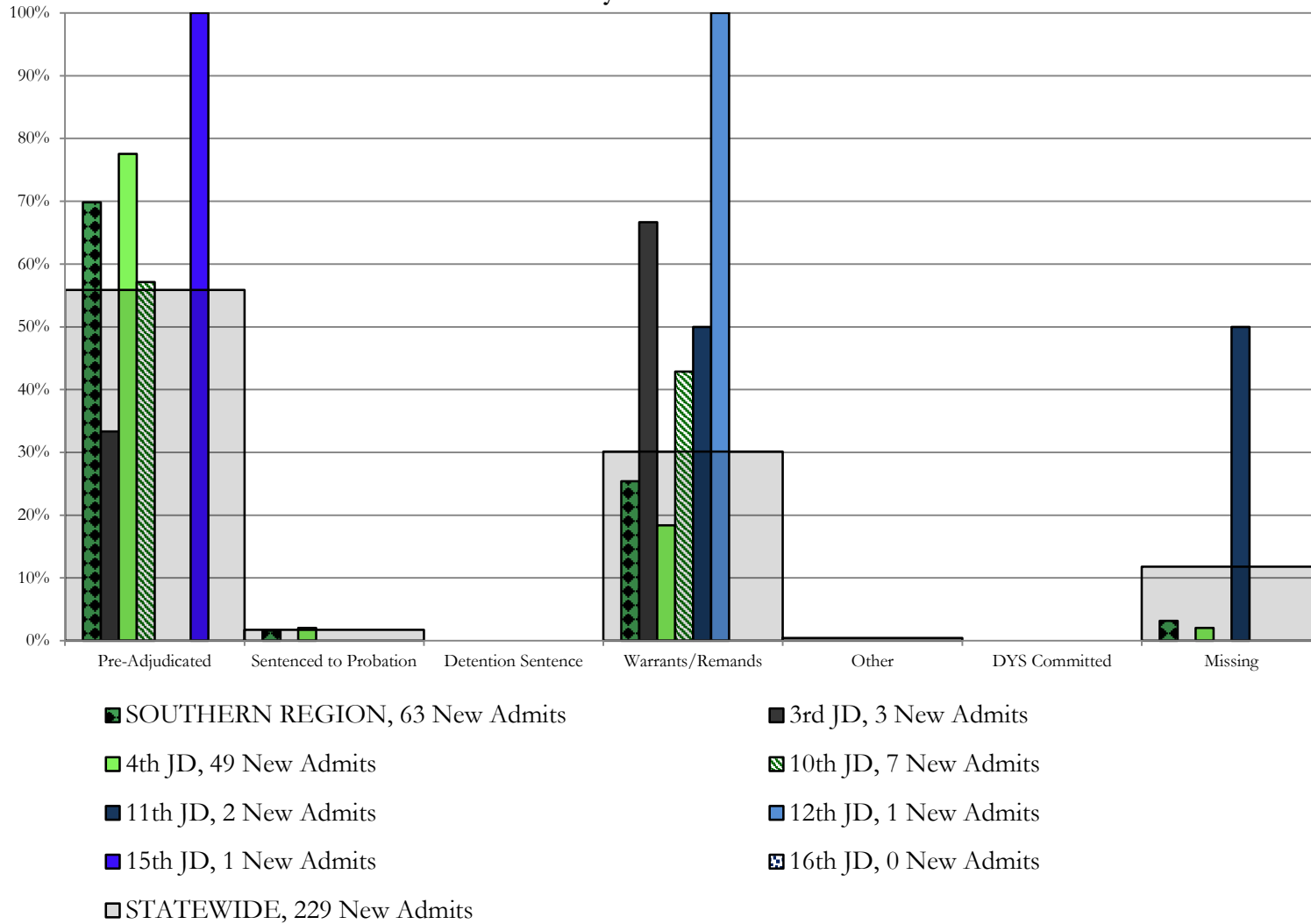
CYDC Reason Detained by Judicial District

May 2020 New Admits



- NORTHEAST REGION, 54 New Admits
- 8th JD, 14 New Admits
- 13th JD, 1 New Admits
- 17th JD, 20 New Admits
- 19th JD, 17 New Admits
- 20th JD, 2 New Admits
- STATEWIDE, 229 New Admits

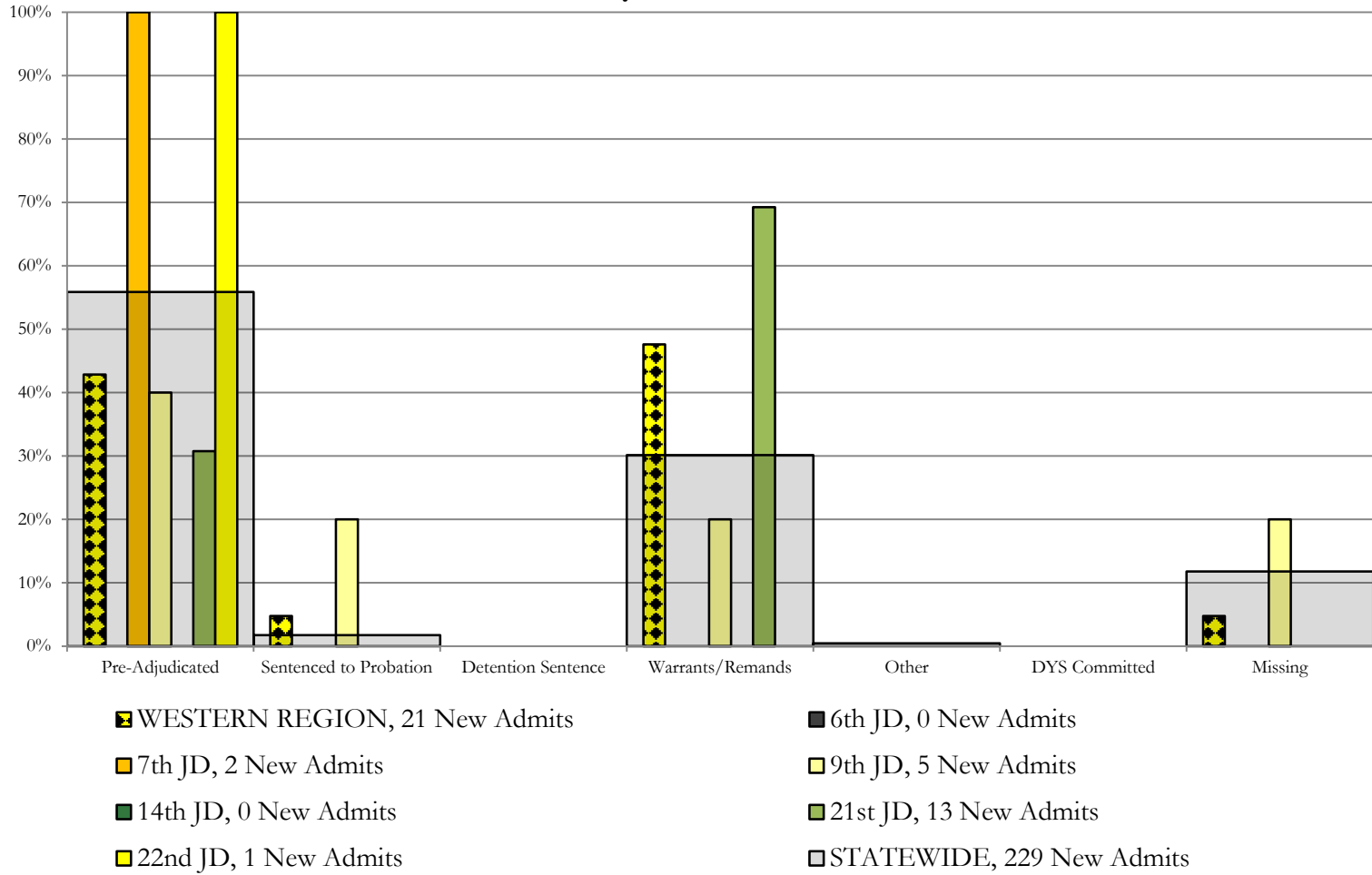
Southern Region CYDC Reason Detained by Judicial District May 2020 New Admits



Western Region

CYDC Reason Detained by Judicial District

May 2020 New Admits



May 2020 CYDC Supplemental Report

DYS Detention Maximum Youth Served by Judicial District¹

Region	JD	Detention Capacity	Detention ADP		Maximum Youth Served on a Single Day ^{2,3}			
			May 2020	YTD	May 2020		YTD	
					Number of Youth	% of Detention Capacity	Number of Youth	% of Detention Capacity
<i>Central</i>								
	1st	35	15.1	18.3	18	51.4%	34	97.1%
	2nd	49	27.7	35.8	35	71.4%	52	106.1%
	5th	4	1.0	0.9	2	50.0%	4	100.0%
	18th	48	38.8	48.8	43	89.6%	71	147.9%
Central Region		136	82.6	103.7	91	66.9%	136	100.0%
<i>Northeast</i>								
	8th	14	6.6	12.5	9	64.3%	21	150.0%
	13th	5	1.8	3.0	3	60.0%	8	160.0%
	17th	28	13.9	20.3	18	64.3%	30	107.1%
	19th	18	7.1	10.5	10	55.6%	20	111.1%
	20th	8	2.6	4.1	3	37.5%	8	100.0%
Northeast Region		73	32.0	50.4	37	50.7%	68	93.2%
<i>Southern</i>								
	3rd	2	1.2	2.4	2	100.0%	8	400.0%
	4th	54	37.7	45.3	43	79.6%	61	113.0%
	10th	14	3.0	4.7	4	28.6%	11	78.6%
	11th	3	1.9	1.9	4	133.3%	6	200.0%
	12th	4	1.0	1.9	2	50.0%	6	150.0%
	15th	2	0.5	1.4	1	50.0%	5	250.0%
	16th	3	0.0	0.4	0	0.0%	3	100.0%
Southern Region		82	45.3	58.0	52	63.4%	76	92.7%
<i>Western</i>								
	6th	5	0.4	0.5	1	20.0%	2	40.0%
	7th	5	0.2	0.5	1	20.0%	4	80.0%
	9th	3	1.9	1.1	4	133.3%	4	133.3%
	14th	3	0.6	1.0	1	33.3%	3	100.0%
	21st	16	7.3	10.8	11	68.8%	20	125.0%
	22nd	4	0.2	0.9	1	25.0%	5	125.0%
Western Region		36	10.6	14.8	14	38.9%	24	66.7%
<i>Missing JD or Multiple JDs</i>			3.5	2.3				
Statewide		327	174.0	229.3	185	56.6%	283	86.5%

¹ Maximum youth served is the highest number of youth in detention on a single day during the month or fiscal year.

² Regional figures are not the sum of judicial districts, but represent the maximum count on one day for the entire region.

³ State figures are not the sum of regional figures, but represent the maximum count on one day for the entire state.

May 2020 CYDC Supplemental Report

CYDC Community ADP by Judicial District

Region	JD	Committed		Diversion		ICJ		Municipal		Pre-Adjudicated		Sentenced		VCO		Total	
		May 2020	YTD	May 2020	YTD	May 2020	YTD	May 2020	YTD	May 2020	YTD	May 2020	YTD	May 2020	YTD	May 2020	YTD
<i>Central</i>																	
	1st	2.0	2.1	0.0	2.2	0.0	0.0	30.0	52.7	207.6	188.8	33.1	35.9	0.0	0.0	272.7	281.7
	2nd	2.7	2.5	1.0	0.8	0.0	0.2	0.0	0.0	140.6	135.0	36.4	33.1	0.0	0.0	180.7	171.6
	5th	0.0	0.0	12.0	12.8	0.0	0.0	0.0	0.0	17.5	13.7	32.0	35.3	0.0	0.0	61.5	61.7
	18th	1.0	1.9	2.0	1.1	0.8	0.2	1.0	1.0	291.9	288.9	30.8	32.0	0.0	0.0	327.5	325.1
Central Total		5.7	6.6	15.0	16.9	0.8	0.4	31.0	53.7	657.6	626.4	132.3	136.2	0.0	0.0	842.4	840.1
<i>Northeast</i>																	
	8th	0.0	0.0	4.0	5.2	0.0	0.0	0.0	0.0	94.1	78.1	59.3	52.6	0.0	0.0	157.4	135.9
	13th	0.0	0.0	0.0	0.0	0.0	0.0	30.0	30.5	18.3	15.0	3.0	3.1	1.0	0.7	52.3	49.3
	17th	1.0	0.7	1.0	1.0	0.0	0.0	0.0	0.0	322.5	297.9	76.6	75.0	0.0	0.4	401.1	375.0
	19th	0.1	0.4	0.0	0.0	0.0	0.0	0.0	1.0	78.0	77.0	15.0	24.3	0.0	0.2	93.2	102.9
	20th	1.0	0.5	50.7	51.9	0.0	0.0	1.0	1.0	79.1	66.1	7.4	7.0	0.0	0.0	139.2	126.6
Northeast Total		2.1	1.6	55.7	58.1	0.0	0.0	31.0	32.4	592.1	534.1	161.3	162.0	1.0	1.3	843.2	789.6
<i>Southern</i>																	
	3rd	0.0	0.0	0.0	0.0	0.0	0.0	0.0	0.0	12.5	12.4	1.2	5.0	0.0	0.0	13.7	17.4
	4th	1.2	0.6	0.0	0.0	0.0	0.0	62.0	48.9	160.9	127.1	45.1	39.7	0.0	0.0	269.2	216.3
	10th	0.0	0.0	0.0	0.0	0.0	0.0	0.0	0.6	16.8	16.8	4.2	3.2	0.0	0.5	21.0	21.0
	11th	0.0	0.0	0.0	0.0	0.0	0.0	12.0	6.0	25.9	14.8	9.0	9.9	0.0	0.0	46.9	30.7
	12th	0.0	0.0	2.0	2.5	0.0	0.0	1.0	1.0	8.1	6.4	0.1	1.3	0.0	0.0	11.2	11.3
	15th	0.0	0.0	1.2	3.4	0.0	0.0	0.0	0.0	6.3	2.6	7.0	7.8	0.0	0.0	14.5	13.8
	16th	0.0	0.0	0.0	0.0	0.0	0.0	0.0	0.0	6.0	5.0	1.0	0.5	13.0	15.0	20.0	20.4
Southern Total		1.2	0.6	3.2	6.0	0.0	0.0	75.0	56.5	236.5	185.1	67.6	67.3	13.0	15.4	396.6	331.0
<i>Western</i>																	
	6th	0.0	0.0	0.0	0.0	0.0	0.0	5.0	2.4	6.5	6.0	0.0	0.0	0.0	0.0	11.5	8.4
	7th	0.0	0.0	12.4	16.1	0.0	0.0	5.6	2.0	17.7	11.9	8.0	5.1	0.0	0.0	43.7	35.0
	9th	0.0	0.0	6.3	3.9	0.0	0.0	8.1	5.9	12.9	11.9	0.0	0.6	0.0	0.0	27.4	22.2
	14th	0.0	0.0	7.0	9.0	0.0	0.0	1.0	0.3	5.0	5.5	1.6	0.9	0.0	0.0	14.6	15.7
	21st	0.0	0.0	0.0	0.0	0.0	0.0	0.0	0.0	52.8	59.0	24.7	22.8	0.0	0.0	77.5	81.9
	22nd	0.0	0.0	0.0	0.0	0.0	0.0	0.0	0.0	6.7	5.0	8.0	10.2	0.0	0.0	14.7	15.2
Western Total		0.0	0.0	25.7	28.9	0.0	0.0	19.8	10.6	101.7	99.3	42.3	39.5	0.0	0.0	189.5	178.4
Statewide Total		9.0	8.8	99.6	109.9	0.8	0.4	156.8	153.3	1,587.9	1,444.9	403.5	405.0	14.0	16.7	2,271.7	2,139.1