

April 2020*

FY 2019-2020

CYDC JDSAG SUPPLEMENTAL REPORT

Prepared by the Division of Youth Services (DYS)

Data Management & Analysis

May 26, 2020

* Following the initial announcement of positive cases of COVID-19 in Colorado on March 5th, data presented in this report largely reflect COVID-19 response and Executive Order (EO) compliance across the detained, committed, and paroled populations. The statewide detention bed availability was temporarily reduced to 200 effective April 21, 2020 COB; DYS plans to return to official allocations (327) and bed borrowing practices upon expiration of the EO. Due to the temporary nature of the reduction, DYS continues to utilize official detention bed allocations within this report. Commitment population reductions and Parole population increases are a direct result of the Division's EO response, releasing an unprecedented number of youth from residential placement to parole.



COLORADO
Division of Youth Services
Office of Children, Youth & Families

April 2020 CYDC Supplemental Report

DYS Commitment ADP & New Commitments by Judicial District

Region	JD ¹	2020 Population Estimates ²	ADP ³		New Commitments		
			April 2020	YTD	April 2020	YTD	YTD Rate ⁴
<i>Central</i>							
	1st	54,722	47.1	67.4	0	11	2.0
	2nd	57,309	68.7	74.0	1	32	5.6
	5th	9,320	3.7	4.1	0	1	1.1
	18th	115,605	70.0	74.5	3	32	2.8
Central Total		236,956	189.5	220.0	4	76	3.2
<i>Northeast</i>							
	8th	34,597	17.4	18.2	4	12	3.5
	13th	8,496	3.0	2.6	0	3	3.5
	17th	69,940	40.9	44.0	1	25	3.6
	19th	38,548	34.7	37.7	2	23	6.0
	20th	31,121	3.0	3.7	0	1	0.3
Northeast Total		182,702	99.0	106.2	7	64	3.5
<i>Southern</i>							
	3rd	1,817	2.5	2.9	0	0	0.0
	4th	83,065	58.8	66.4	3	28	3.4
	10th	18,110	8.0	9.9	0	5	2.8
	11th	7,264	3.0	3.0	0	3	4.1
	12th	5,399	2.5	4.2	0	3	5.6
	15th	2,125	3.5	2.8	0	1	4.7
	16th	2,762	2.5	2.2	0	1	3.6
Southern Total		120,542	80.8	91.5	3	41	3.4
<i>Western</i>							
	6th	7,285	0.0	1.5	0	0	0.0
	7th	10,595	5.3	6.8	0	4	3.8
	9th	8,578	2.0	4.1	0	0	0.0
	14th	5,752	0.0	0.0	0	0	0.0
	21st	16,322	28.8	33.1	1	14	8.6
	22nd	3,063	8.2	7.4	0	6	19.6
Western Total		51,595	44.3	53.0	1	24	4.7
Statewide Total		591,795	413.6	470.7	15	205	3.5

¹ JD represents the judicial district in which the client was committed. Regional totals are a sum of their respective judicial districts. Regional totals reported here may differ slightly from those reported in the Monthly Population Report, where region is defined by active caseloads.

² Source: DOLA 2020 Estimates.

³ Due to rounding, totals shown may not be an exact sum of the subtotals.

⁴ Per 10,000 youth in the population.

April 2020 CYDC Supplemental Report

DYS Detention ADP and New Detention Admissions by Judicial District

Region	JD	2020 Population Estimates ¹	ADP		New Admits		
			April 2020	YTD	April 2020	YTD	YTD New Admit Rate ²
<i>Central</i>							
	1st	54,722	17.1	18.6	18	317	57.9
	2nd	57,309	23.2	36.6	21	540	94.2
	5th	9,320	1.0	0.9	0	15	16.1
	18th	115,605	39.6	49.9	27	682	59.0
Central Total		236,956	80.9	106.0	66	1,554	65.6
<i>Northeast</i>							
	8th	34,597	8.0	13.1	5	221	63.9
	13th	8,496	2.6	3.2	5	50	58.9
	17th	69,940	14.2	21.0	9	334	47.8
	19th	38,548	6.6	10.8	18	280	72.6
	20th	31,121	3.4	4.4	1	74	23.8
Northeast Total		182,702	34.8	52.4	38	959	52.5
<i>Southern</i>							
	3rd	1,817	2.1	2.5	3	18	99.1
	4th	83,065	41.3	46.4	35	588	70.8
	10th	18,110	4.1	4.9	7	135	74.5
	11th	7,264	2.8	1.9	4	42	57.8
	12th	5,399	1.2	2.0	0	19	35.2
	15th	2,125	0.0	1.4	0	12	56.5
	16th	2,762	0.0	0.5	0	11	39.8
Southern Total		120,542	51.4	59.7	49	825	68.4
<i>Western</i>							
	6th	7,285	1.5	0.5	0	7	9.6
	7th	10,595	0.0	0.6	0	21	19.8
	9th	8,578	1.0	1.0	0	21	24.5
	14th	5,752	1.0	1.1	0	9	15.6
	21st	16,322	9.2	11.1	10	180	110.3
	22nd	3,063	1.5	0.9	0	11	35.9
Western Total		51,595	14.2	15.2	10	249	48.3
<i>Missing JD or Multiple JDs</i>			9.5	2.2			
Statewide Total		591,795	190.8	235.6	163	3,587	60.6

¹ Source: DOLA 2020 Estimates.

² Per 10,000 youth in the population.

April 2020 CYDC Supplemental Report

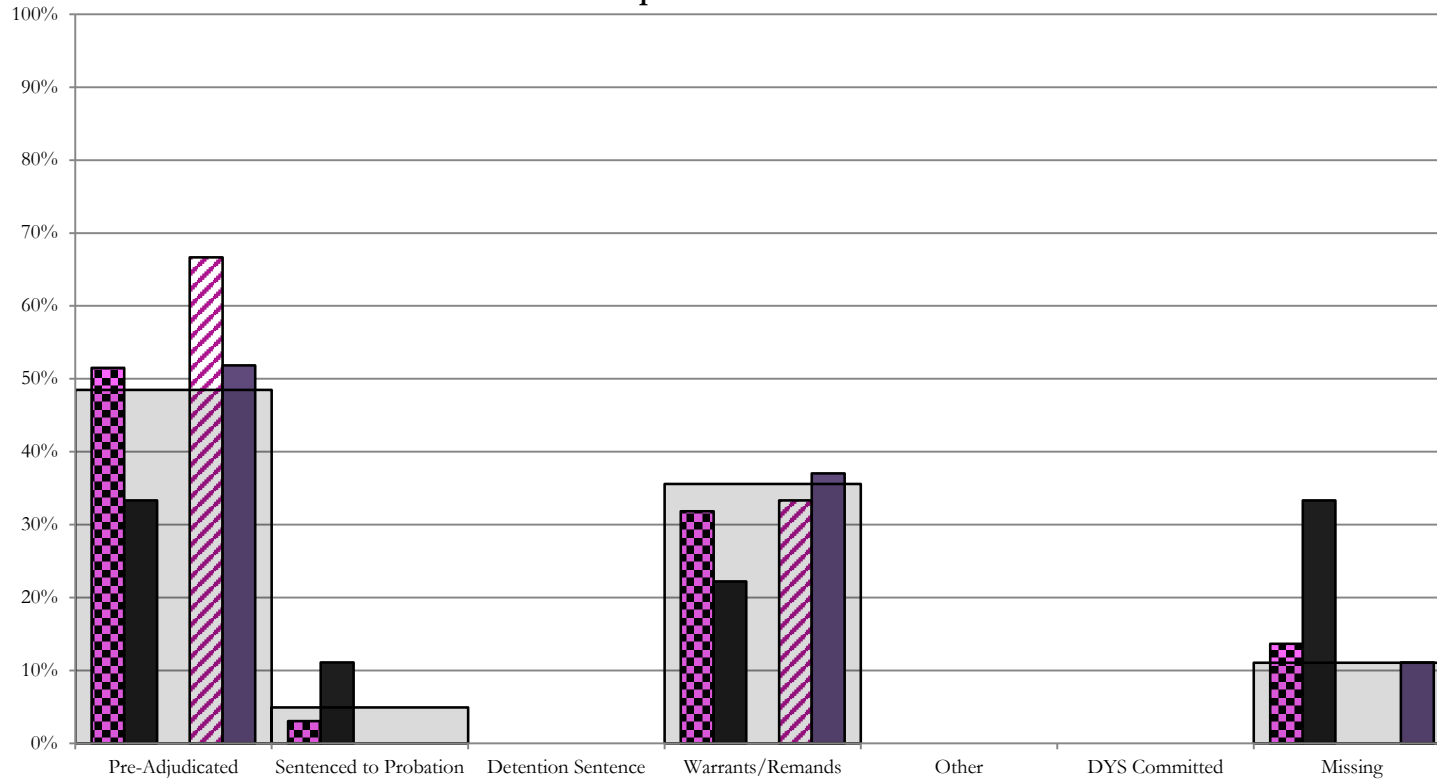
DYS Detention LOS by Judicial District				
Region	JD	YTD Detention Releases	YTD LOS (days)	LOS (days) Compared to State AVG
<i>Central</i>				
	1st	307	16.5	-2.1
	2nd	548	16.1	-2.5
	5th	15	12.4	-6.1
	18th	672	19.7	1.1
Central Total		1,542	17.7	-0.8
<i>Northeast</i>				
	8th	223	16.6	-1.9
	13th	49	12.6	-5.9
	17th	345	15.4	-3.2
	19th	282	11.6	-7.0
	20th	79	17.5	-1.1
Northeast Total		978	14.6	-4.0
<i>Southern</i>				
	3rd	25	20.2	1.7
	4th	580	22.7	4.1
	10th	137	7.8	-10.8
	11th	41	10.1	-8.5
	12th	19	19.3	0.8
	15th	11	25.5	7.0
	16th	11	10.8	-7.8
Southern Total		824	19.3	0.8
<i>Western</i>				
	6th	7	13.9	-4.7
	7th	24	6.2	-12.4
	9th	24	15.4	-3.1
	14th	8	26.2	7.7
	21st	173	13.9	-4.6
	22nd	12	19.8	1.2
Western Total		248	14.0	-4.5
Statewide Total		3,615	18.6	-

April 2020 CDYC Supplemental Report

CYDC Reason Detained (RD) by Judicial District

Region	JD	Monthly New Admits	Pre-Adjudicated				Sentenced to Probation				Detention Sentence								Warrants/Remands				Other						DYS Committed		Missing					
			Felony		Misdemeanor		Technical Violator		New Charges		Probation Sentence		Detention Sentence		Valid Court Order (VCO) Truancy		Awaiting DSS (Social Services) Placement		Failure to Appear (FTA)		Failure to Comply (FTC)		Interstate Compact on Juveniles (ICJ) Hold		Immigration Hold		No Bond Hold		Out-of-Country Warrant		Institutional		Parole		Missing	
			#	%	#	%	#	%	#	%	#	%	#	%	#	%	#	%	#	%	#	%	#	%	#	%	#	%	#	%	#	%	#	%		
Central																																				
	1st	18	6	33.3%	0	0.0%	2	11.1%	0	0.0%	0	0.0%	0	0.0%	0	0.0%	0	0.0%	2	11.1%	2	11.1%	0	0.0%	0	0.0%	0	0.0%	0	0.0%	0	0.0%	0	0.0%	6	33.3%
	2nd	21	14	66.7%	0	0.0%	0	0.0%	0	0.0%	0	0.0%	0	0.0%	0	0.0%	0	0.0%	2	9.5%	5	23.8%	0	0.0%	0	0.0%	0	0.0%	0	0.0%	0	0.0%	0	0.0%	0	0.0%
	5th	0	0	0.0%	0	0.0%	0	0.0%	0	0.0%	0	0.0%	0	0.0%	0	0.0%	0	0.0%	0	0.0%	0	0.0%	0	0.0%	0	0.0%	0	0.0%	0	0.0%	0	0.0%	0	0.0%	0	0.0%
	18th	27	10	37.0%	4	14.8%	0	0.0%	0	0.0%	0	0.0%	0	0.0%	0	0.0%	0	0.0%	0	0.0%	10	37.0%	0	0.0%	0	0.0%	0	0.0%	0	0.0%	0	0.0%	0	0.0%	3	11.1%
Central Total		66	30	45%	4	6%	2	3.0%	0	0.0%	0	0.0%	0	0.0%	0	0.0%	0	0.0%	4	6%	17	26%	0	0.0%	0	0.0%	0	0.0%	0	0.0%	0	0.0%	0	0.0%	9	13.6%
Northeast																																				
	8th	5	1	20.0%	0	0.0%	0	0.0%	0	0.0%	0	0.0%	0	0.0%	0	0.0%	0	0.0%	0	0.0%	2	40.0%	0	0.0%	0	0.0%	0	0.0%	0	0.0%	0	0.0%	0	0.0%	2	40.0%
	13th	5	5	100.0%	0	0.0%	0	0.0%	0	0.0%	0	0.0%	0	0.0%	0	0.0%	0	0.0%	0	0.0%	0	0.0%	0	0.0%	0	0.0%	0	0.0%	0	0.0%	0	0.0%	0	0.0%	0	0.0%
	17th	9	4	44.4%	0	0.0%	0	0.0%	0	0.0%	0	0.0%	0	0.0%	0	0.0%	0	0.0%	2	22.2%	2	22.2%	0	0.0%	0	0.0%	0	0.0%	0	0.0%	0	0.0%	0	0.0%	1	11.1%
	19th	18	4	22.2%	2	11.1%	6	33.3%	0	0.0%	0	0.0%	0	0.0%	0	0.0%	0	0.0%	0	0.0%	6	33.3%	0	0.0%	0	0.0%	0	0.0%	0	0.0%	0	0.0%	0	0.0%	0	0.0%
	20th	1	0	0.0%	0	0.0%	0	0.0%	0	0.0%	0	0.0%	0	0.0%	0	0.0%	0	0.0%	0	0.0%	0	0.0%	0	0.0%	0	0.0%	0	0.0%	0	0.0%	0	0.0%	1	100.0%		
Northeast Total		38	14	37%	2	5%	6	15.8%	0	0.0%	0	0.0%	0	0.0%	0	0.0%	0	0.0%	2	5.3%	10	26%	0	0.0%	0	0.0%	0	0.0%	0	0.0%	0	0.0%	4	11%		
Southern																																				
	3rd	3	3	100.0%	0	0.0%	0	0.0%	0	0.0%	0	0.0%	0	0.0%	0	0.0%	0	0.0%	0	0.0%	0	0.0%	0	0.0%	0	0.0%	0	0.0%	0	0.0%	0	0.0%	0	0.0%	0	0.0%
	4th	35	11	31.4%	5	14.3%	0	0.0%	0	0.0%	0	0.0%	0	0.0%	0	0.0%	0	0.0%	4	11.4%	12	34.3%	0	0.0%	0	0.0%	0	0.0%	0	0.0%	0	0.0%	0	0.0%	3	8.6%
	10th	7	2	28.6%	2	28.6%	0	0.0%	0	0.0%	0	0.0%	0	0.0%	0	0.0%	0	0.0%	2	28.6%	1	14.3%	0	0.0%	0	0.0%	0	0.0%	0	0.0%	0	0.0%	0	0.0%	0	0.0%
	11th	4	2	50.0%	0	0.0%	0	0.0%	0	0.0%	0	0.0%	0	0.0%	0	0.0%	0	0.0%	0	0.0%	1	25.0%	0	0.0%	0	0.0%	0	0.0%	0	0.0%	0	0.0%	1	25.0%		
	12th	0	0	0.0%	0	0.0%	0	0.0%	0	0.0%	0	0.0%	0	0.0%	0	0.0%	0	0.0%	0	0.0%	0	0.0%	0	0.0%	0	0.0%	0	0.0%	0	0.0%	0	0.0%	0	0.0%		
	15th	0	0	0.0%	0	0.0%	0	0.0%	0	0.0%	0	0.0%	0	0.0%	0	0.0%	0	0.0%	0	0.0%	0	0.0%	0	0.0%	0	0.0%	0	0.0%	0	0.0%	0	0.0%	0	0.0%		
	16th	0	0	0.0%	0	0.0%	0	0.0%	0	0.0%	0	0.0%	0	0.0%	0	0.0%	0	0.0%	0	0.0%	0	0.0%	0	0.0%	0	0.0%	0	0.0%	0	0.0%	0	0.0%	0	0.0%		
Southern Total		49	18	37%	7	14%	0	0.0%	0	0.0%	0	0.0%	0	0.0%	0	0.0%	0	0.0%	6	12%	14	29%	0	0.0%	0	0.0%	0	0.0%	0	0.0%	0	0.0%	4	8%		
Western																																				
	6th	0	0	0.0%	0	0.0%	0	0.0%	0	0.0%	0	0.0%	0	0.0%	0	0.0%	0	0.0%	0	0.0%	0	0.0%	0	0.0%	0	0.0%	0	0.0%	0	0.0%	0	0.0%	0	0.0%		
	7th	0	0	0.0%	0	0.0%	0	0.0%	0	0.0%	0	0.0%	0	0.0%	0	0.0%	0	0.0%	0	0.0%	0	0.0%	0	0.0%	0	0.0%	0	0.0%	0	0.0%	0	0.0%	0	0.0%		
	9th	0	0	0.0%	0	0.0%	0	0.0%	0	0.0%	0	0.0%	0	0.0%	0	0.0%	0	0.0%	0	0.0%	0	0.0%	0	0.0%	0	0.0%	0	0.0%	0	0.0%	0	0.0%	0	0.0%		
	14th	0	0	0.0%	0	0.0%	0	0.0%	0	0.0%	0	0.0%	0	0.0%	0	0.0%	0	0.0%	0	0.0%	0	0.0%	0	0.0%	0	0.0%	0	0.0%	0	0.0%	0	0.0%	0	0.0%		
	21st	10	4	40.0%	0	0.0%	0	0.0%	0	0.0%	0	0.0%	0	0.0%	0	0.0%	0	0.0%	0	0.0%	5	50.0%	0	0.0%	0	0.0%	0	0.0%	0	0.0%	0	0.0%	1	10%		
	22nd	0	0	0.0%	0	0.0%	0	0.0%	0	0.0%	0	0.0%	0	0.0%	0	0.0%	0	0.0%	0	0.0%	0	0.0%	0	0.0%	0	0.0%	0	0.0%	0	0.0%	0	0.0%	0	0.0%		
Western Total		10	4	40%	0	0.0%	0	0.0%	0	0.0%	0	0.0%	0	0.0%	0	0.0%	0	0.0%	0	0.0%	5	50%	0	0.0%	0	0.0%	0	0.0%	0	0.0%	1	10%				
Individual RD Totals		163	66	40%	13	8%	8	4.9%	0	0.0%	0	0.0%	0	0.0%	0	0.0%	0	0.0%	12	7%	46	28%	0	0.0%	0	0.0%	0	0.0%	0	0.0%	0	0.0%	18	11%		
Statewide Totals		163	79	48.5%	8	4.9%	0	0.0%	0	0.0%	0	0.0%	0	0.0%	0	0.0%	0	0.0%	58	35.6%	0	0.0%	0	0.0%	0	0.0%	0	0.0%	18	11%						

Central Region CYDC Reason Detained by Judicial District April 2020 New Admits



■ CENTRAL REGION, 66 New Admits

■ 5th JD, 0 New Admits

■ 18th JD, 27 New Admits

■ 1st JD, 18 New Admits

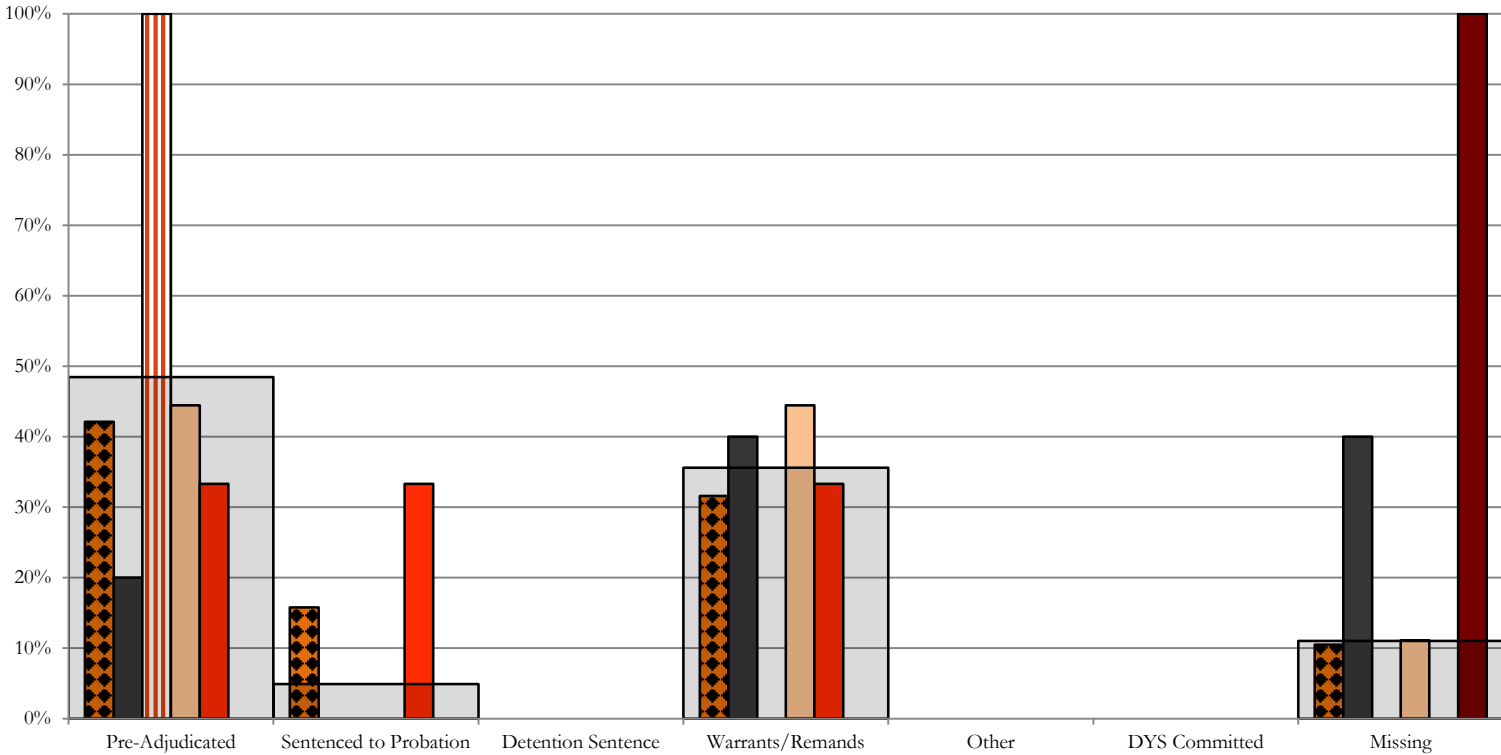
■ 2nd JD, 21 New Admits

■ STATEWIDE, 163 New Admits

Northeast Region

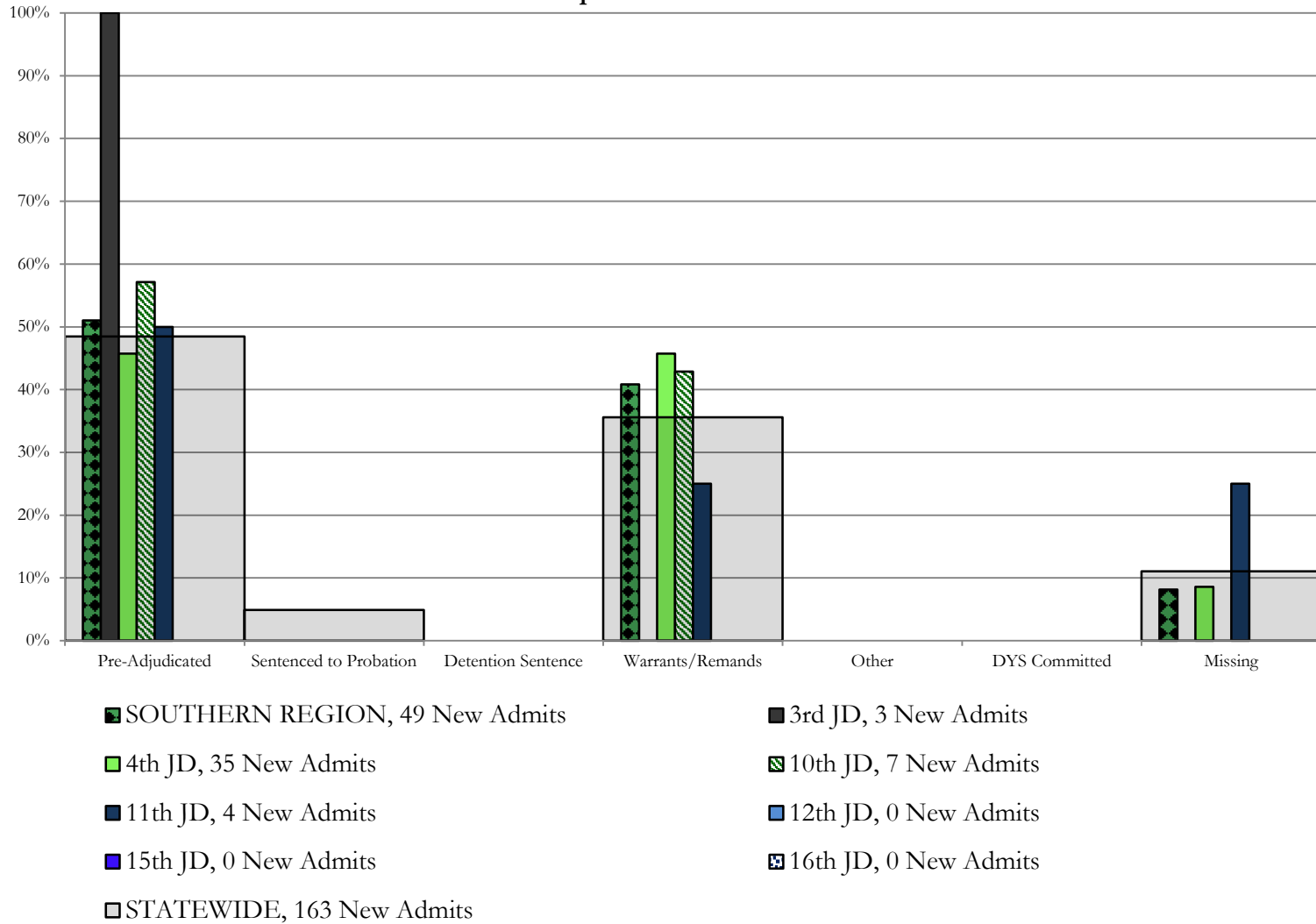
CYDC Reason Detained by Judicial District

April 2020 New Admits



- NORTHEAST REGION, 38 New Admits
- 8th JD, 5 New Admits
- 13th JD, 5 New Admits
- 17th JD, 9 New Admits
- 19th JD, 18 New Admits
- 20th JD, 1 New Admits
- STATEWIDE, 163 New Admits

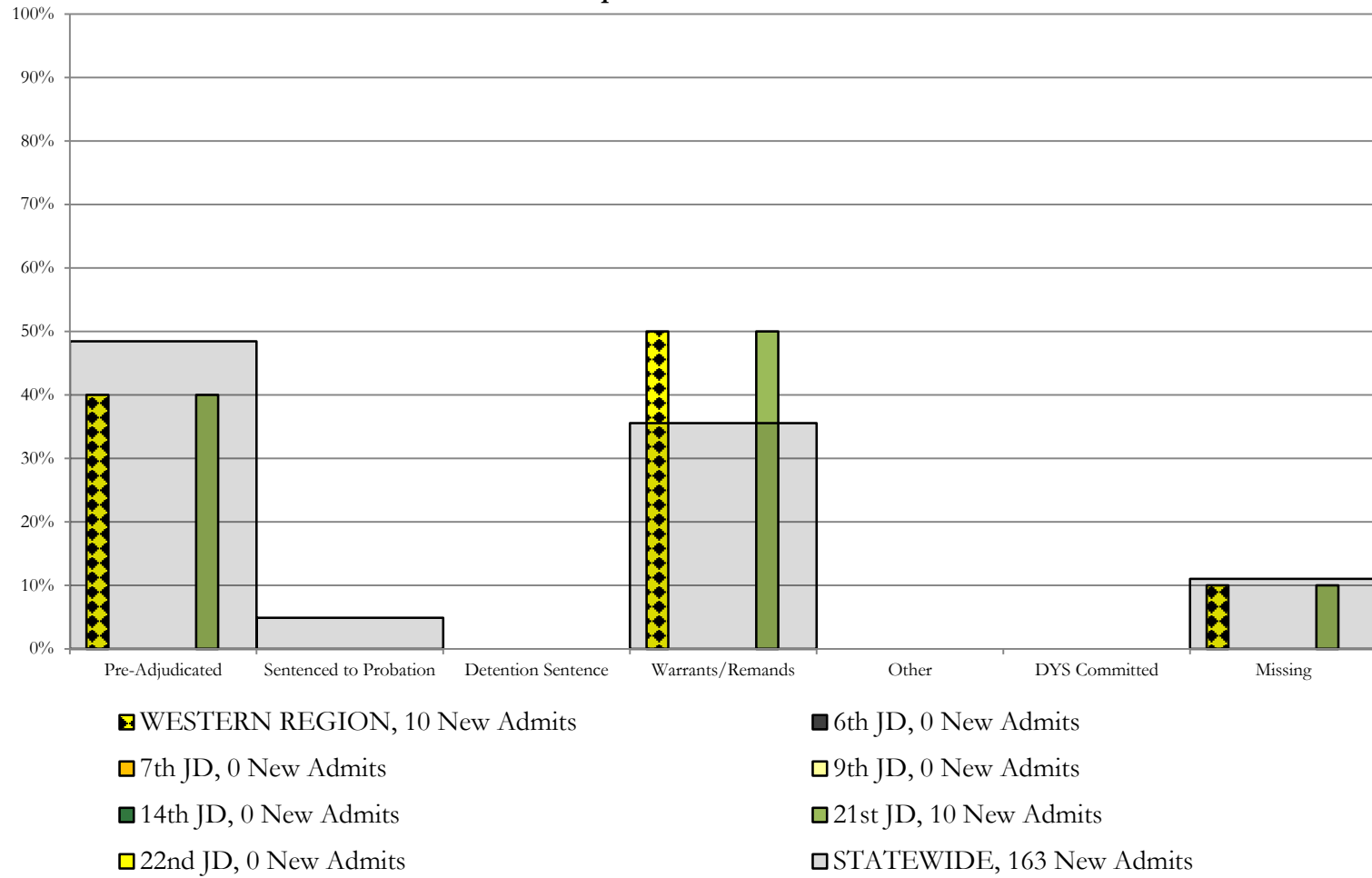
Southern Region CYDC Reason Detained by Judicial District April 2020 New Admits



Western Region

CYDC Reason Detained by Judicial District

April 2020 New Admits



April 2020 CYDC Supplemental Report

DYS Detention Maximum Youth Served by Judicial District¹

Region	JD	Detention Capacity	Detention ADP		Maximum Youth Served on a Single Day ^{2,3}			
			April 2020	YTD	April 2020		YTD	
					Number of Youth	% of Detention Capacity	Number of Youth	% of Detention Capacity
<i>Central</i>								
	1st	35	17.1	18.6	22	62.9%	34	97.1%
	2nd	49	23.2	36.6	30	61.2%	52	106.1%
	5th	4	1.0	0.9	1	25.0%	4	100.0%
	18th	48	39.6	49.9	43	89.6%	71	147.9%
Central Region		136	80.9	106.0	93	68.4%	136	100.0%
<i>Northeast</i>								
	8th	14	8.0	13.1	12	85.7%	21	150.0%
	13th	5	2.6	3.2	4	80.0%	8	160.0%
	17th	28	14.2	21.0	17	60.7%	30	107.1%
	19th	18	6.6	10.8	9	50.0%	20	111.1%
	20th	8	3.4	4.4	4	50.0%	8	100.0%
Northeast Region		73	34.8	52.4	43	58.9%	68	93.2%
<i>Southern</i>								
	3rd	2	2.1	2.5	4	200.0%	8	400.0%
	4th	54	41.3	46.4	48	88.9%	61	113.0%
	10th	14	4.1	4.9	7	50.0%	11	78.6%
	11th	3	2.8	1.9	5	166.7%	6	200.0%
	12th	4	1.2	2.0	2	50.0%	6	150.0%
	15th	2	0.0	1.4	0	0.0%	5	250.0%
	16th	3	0.0	0.5	0	0.0%	3	100.0%
Southern Region		82	51.4	59.7	61	74.4%	76	92.7%
<i>Western</i>								
	6th	5	1.5	0.5	2	40.0%	2	40.0%
	7th	5	0.0	0.6	0	0.0%	4	80.0%
	9th	3	1.0	1.0	1	33.3%	4	133.3%
	14th	3	1.0	1.1	1	33.3%	3	100.0%
	21st	16	9.2	11.1	13	81.3%	20	125.0%
	22nd	4	1.5	0.9	2	50.0%	5	125.0%
Western Region		36	14.2	15.2	19	52.8%	24	66.7%
<i>Missing JD or Multiple JDs</i>			9.5	2.2				
Statewide		327	190.8	235.6	208	63.6%	283	86.5%

¹ Maximum youth served is the highest number of youth in detention on a single day during the month or fiscal year.

² Regional figures are not the sum of judicial districts, but represent the maximum count on one day for the entire region.

³ State figures are not the sum of regional figures, but represent the maximum count on one day for the entire state.

April 2020 CYDC Supplemental Report

CYDC Community ADP by Judicial District

Region	JD	Committed		Diversion		ICJ		Municipal		Pre-Adjudicated		Sentenced		VCO		Total	
		April 2020	YTD	April 2020	YTD	April 2020	YTD	April 2020	YTD	April 2020	YTD	April 2020	YTD	April 2020	YTD	April 2020	YTD
<i>Central</i>																	
	1st	2.1	2.1	1.0	2.4	68.4	0.0	213.5	55.0	35.4	186.3	0.0	36.1	320.4	0.0	640.7	282.0
	2nd	2.0	2.5	1.0	0.8	0.0	0.2	155.0	0.0	35.0	137.5	0.0	33.1	193.0	0.0	386.0	174.1
	5th	0.0	0.0	12.0	12.8	0.0	0.0	17.0	0.0	32.0	13.3	0.0	35.6	61.0	0.0	122.0	61.8
	18th	1.0	2.0	2.0	1.0	1.0	0.1	297.8	1.0	31.8	288.8	0.0	33.2	333.6	0.0	667.3	326.1
Central Total		5.1	6.7	16.0	17.1	69.4	0.4	683.3	56.0	134.2	625.9	0.0	138.1	908.0	0.0	1816.0	844.0
<i>Northeast</i>																	
	8th	0.0	0.0	4.0	5.3	0.0	0.0	90.2	0.0	57.8	76.4	0.0	51.8	151.9	0.0	303.9	133.6
	13th	0.0	0.0	0.0	0.0	30.3	0.0	15.3	30.5	3.0	14.7	1.0	3.1	49.6	0.7	99.3	49.0
	17th	1.0	0.7	1.0	1.0	0.0	0.0	313.8	0.0	78.0	296.1	0.0	76.8	393.8	0.4	787.5	375.1
	19th	0.7	0.4	0.0	0.0	0.0	0.0	79.4	1.1	14.6	76.9	0.0	25.2	94.7	0.2	189.3	103.9
	20th	1.0	0.5	59.2	57.1	1.0	0.0	97.4	1.0	8.0	79.4	2.0	8.0	168.6	1.3	337.1	147.2
Northeast Total		2.7	1.6	64.2	63.5	31.3	0.0	596.0	32.6	161.3	543.5	3.0	164.9	858.6	2.7	1717.1	808.7
<i>Southern</i>																	
	3rd	0.0	0.0	0.0	0.0	0.0	0.0	16.0	0.0	7.0	16.0	0.0	6.7	23.0	0.0	46.0	22.7
	4th	0.0	0.6	0.0	0.0	63.0	0.0	151.9	48.5	39.6	124.3	0.0	39.1	254.5	0.0	508.9	212.5
	10th	0.0	0.0	0.0	0.0	0.0	0.0	15.4	0.7	4.0	16.8	0.0	3.1	19.4	0.5	38.8	21.0
	11th	0.0	0.0	0.0	0.0	14.0	0.0	25.1	5.9	10.0	13.9	0.0	10.3	49.1	0.0	98.1	30.1
	12th	0.0	0.0	2.0	2.6	1.0	0.0	7.0	1.0	0.2	6.2	0.0	1.4	10.2	0.0	20.4	11.2
	15th	0.0	0.0	3.0	3.7	0.0	0.0	5.0	0.0	7.2	2.3	0.0	7.9	15.2	0.0	30.4	13.8
	16th	0.0	0.0	0.0	0.0	0.0	0.0	6.0	0.0	1.0	4.9	13.0	0.4	20.0	15.2	40.0	20.5
Southern Total		0.0	0.6	5.0	6.3	78.0	0.0	226.3	56.1	69.0	184.4	13.0	68.9	391.3	15.7	782.7	331.8
<i>Western</i>																	
	6th	0.0	0.0	0.0	0.0	5.0	0.0	9.6	2.2	0.0	6.0	0.0	0.0	14.6	0.0	29.2	8.1
	7th	0.0	0.0	12.5	14.8	6.0	0.0	16.3	2.2	8.0	11.3	0.0	4.8	42.9	0.0	85.7	33.0
	9th	0.0	0.0	8.0	3.6	10.9	0.0	11.2	5.6	0.3	11.8	0.0	0.6	30.4	0.0	60.7	21.7
	14th	0.0	0.0	8.0	9.2	1.0	0.0	7.0	0.3	2.0	5.7	0.0	0.8	18.0	0.0	36.0	16.0
	21st	0.0	0.0	0.0	0.0	0.0	0.0	56.3	0.0	25.5	59.6	0.0	22.6	81.8	0.0	163.6	82.3
	22nd	0.0	0.0	0.0	0.0	0.0	0.0	7.0	0.0	8.0	4.6	0.0	10.4	15.0	0.0	30.0	15.0
Western Total		0.0	0.0	28.5	27.6	22.9	0.0	107.4	10.3	43.8	99.0	0.0	39.2	202.6	0.0	405.2	176.1
Statewide Total		7.7	8.8	113.7	114.4	201.6	0.4	1,613.0	154.9	408.4	1,452.8	16.0	411.1	2360.5	18.3	4,721.0	2,160.7