

March 2020 FY 2019-2020 CYDC JDSAG SUPPLEMENTAL REPORT

Prepared by the Division of Youth Services (DYS)
Data Management & Analysis
April 22, 2020



COLORADO

Division of Youth Services

Office of Children, Youth & Families

March 2020 CYDC Supplemental Report

DYS Commitment ADP & New Commitments by Judicial District

Region	JD ¹	2020 Population Estimates ²	ADP ³		New Commitments		
			March 2020	YTD	March 2020	YTD	YTD Rate ⁴
<i>Central</i>							
	1st	54,722	54.1	69.6	2	11	2.0
	2nd	57,309	77.1	74.6	3	31	5.4
	5th	9,320	4.6	4.2	0	1	1.1
	18th	115,605	73.7	75.0	2	28	2.4
Central Total		236,956	209.6	223.4	7	71	3.0
<i>Northeast</i>							
	8th	34,597	16.2	18.2	1	8	2.3
	13th	8,496	2.2	2.6	1	3	3.5
	17th	69,940	39.6	44.2	3	24	3.4
	19th	38,548	39.1	38.0	1	21	5.4
	20th	31,121	3.0	3.8	0	1	0.3
Northeast Total		182,702	100.2	106.8	6	57	3.1
<i>Southern</i>							
	3rd	1,817	3.0	3.0	0	0	0.0
	4th	83,065	59.8	67.1	4	25	3.0
	10th	18,110	8.5	10.1	0	5	2.8
	11th	7,264	2.8	3.0	1	3	4.1
	12th	5,399	3.0	4.4	0	3	5.6
	15th	2,125	2.2	2.7	1	1	4.7
	16th	2,762	3.0	2.2	0	1	3.6
Southern Total		120,542	82.4	92.5	6	38	3.2
<i>Western</i>							
	6th	7,285	0.0	1.7	0	0	0.0
	7th	10,595	6.1	7.0	0	4	3.8
	9th	8,578	3.6	4.3	0	0	0.0
	14th	5,752	0.0	0.0	0	0	0.0
	21st	16,322	28.1	33.6	1	13	8.0
	22nd	3,063	8.0	7.1	0	6	19.6
Western Total		51,595	45.8	53.7	1	23	4.5
Statewide Total		591,795	437.9	476.4	20	189	3.2

¹ JD represents the judicial district in which the client was committed. Regional totals are a sum of their respective judicial districts. Regional totals reported here may differ slightly from those reported in the Monthly Population Report, where region is defined by active caseloads.

² Source: DOLA 2020 Estimates.

³ Due to rounding, totals shown may not be an exact sum of the subtotals.

⁴ Per 10,000 youth in the population.

March 2020 CYDC Supplemental Report

DYS Detention ADP and New Detention Admissions by Judicial District

Region	JD	2020 Population Estimates ¹	ADP		New Admits		
			March 2020	YTD	March 2020	YTD	YTD New Admit Rate ²
<i>Central</i>							
	1st	54,722	22.8	18.8	20	299	54.6
	2nd	57,309	35.2	38.1	46	519	90.6
	5th	9,320	2.2	0.9	1	15	16.1
	18th	115,605	47.4	51.1	42	655	56.7
Central Total		236,956	107.6	108.8	109	1,488	62.8
<i>Northeast</i>							
	8th	34,597	13.2	13.7	15	216	62.4
	13th	8,496	2.7	3.2	2	45	53.0
	17th	69,940	19.1	21.9	24	325	46.5
	19th	38,548	11.0	11.3	30	262	68.0
	20th	31,121	2.7	4.5	4	73	23.5
Northeast Total		182,702	48.7	54.5	75	921	50.4
<i>Southern</i>							
	3rd	1,817	2.0	2.6	0	15	82.6
	4th	83,065	47.1	47.0	60	553	66.6
	10th	18,110	6.3	4.9	14	128	70.7
	11th	7,264	3.1	1.8	7	38	52.3
	12th	5,399	2.6	2.1	0	19	35.2
	15th	2,125	2.9	1.6	2	12	56.5
	16th	2,762	0.0	0.5	0	11	39.8
Southern Total		120,542	63.9	60.5	83	776	64.4
<i>Western</i>							
	6th	7,285	2.0	0.4	0	7	9.6
	7th	10,595	0.2	0.6	1	21	19.8
	9th	8,578	1.0	1.0	0	21	24.5
	14th	5,752	1.0	1.1	0	9	15.6
	21st	16,322	13.2	11.3	24	170	104.2
	22nd	3,063	2.0	0.9	0	11	35.9
Western Total		51,595	19.3	15.4	25	239	46.3
<i>Missing JD or Multiple JDs</i>			3.5	1.3			
Statewide Total		591,795	243.0	240.5	292	3,424	57.9

¹ Source: DOLA 2020 Estimates.

² Per 10,000 youth in the population.

March 2020 CYDC Supplemental Report

DYS Detention LOS by Judicial District				
Region	JD	YTD Detention Releases	YTD LOS (days)	LOS (days) Compared to State AVG
<i>Central</i>				
	1st	289	15.3	-2.2
	2nd	527	15.8	-1.7
	5th	15	12.4	-5.1
	18th	646	18.7	1.2
Central Total		1,477	16.9	-0.6
<i>Northeast</i>				
	8th	216	16.0	-1.5
	13th	45	12.8	-4.7
	17th	329	14.9	-2.7
	19th	264	11.7	-5.9
	20th	77	16.9	-0.6
Northeast Total		931	14.3	-3.2
<i>Southern</i>				
	3rd	21	21.0	3.5
	4th	539	20.8	3.3
	10th	127	6.9	-10.6
	11th	37	10.7	-6.9
	12th	18	17.1	-0.4
	15th	11	25.5	8.0
	16th	11	10.8	-6.8
Southern Total		764	17.9	0.3
<i>Western</i>				
	6th	6	6.0	-11.5
	7th	24	6.2	-11.3
	9th	24	15.5	-2.1
	14th	8	26.2	8.7
	21st	154	12.3	-5.3
	22nd	10	16.0	-1.5
Western Total		226	12.5	-5.1
Statewide Total		3,415	17.5	-

March 2020 CDYC Supplemental Report

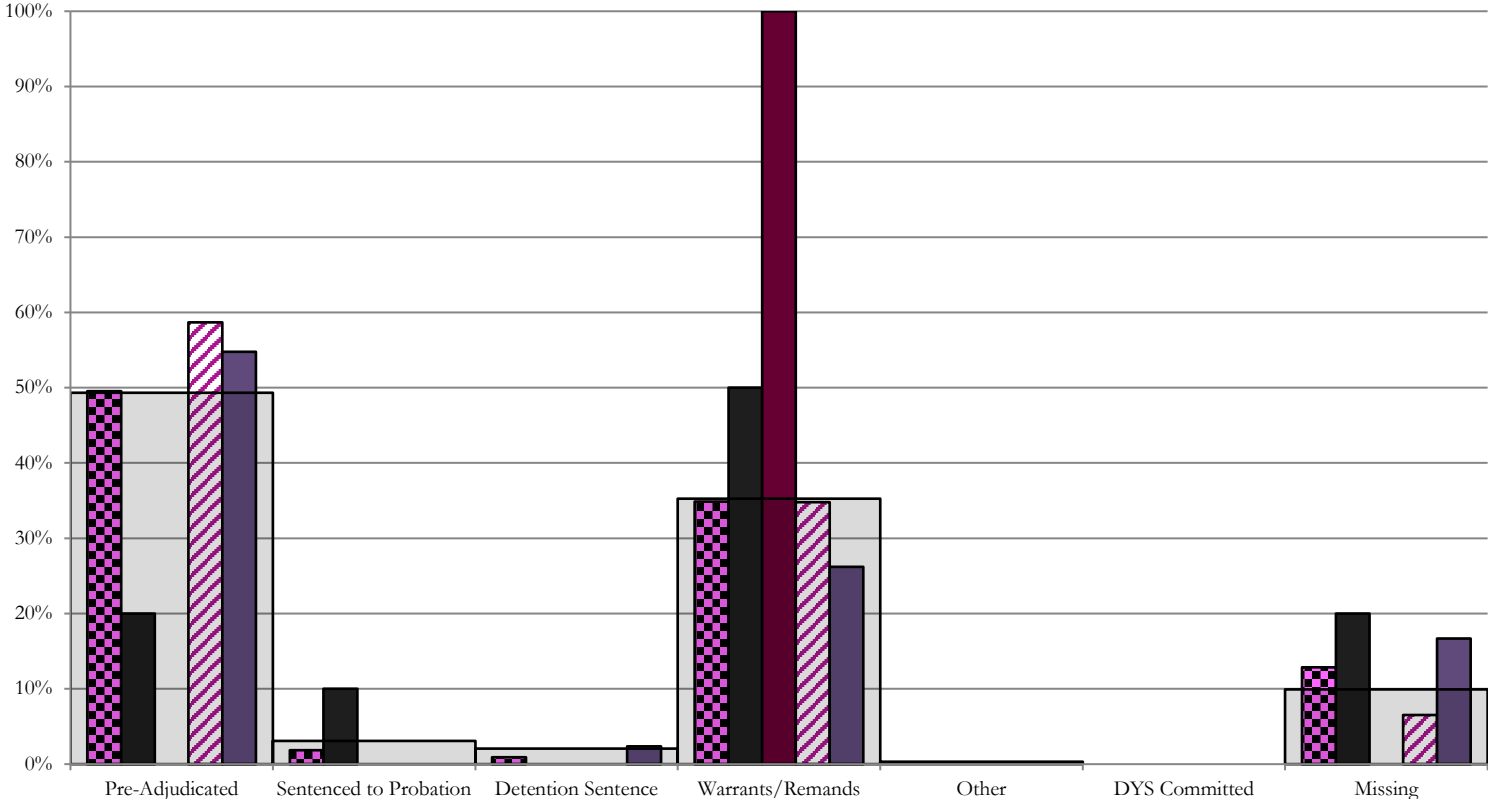
CYDC Reason Detained (RD) by Judicial District

Region	JD	Pre-Adjudicated				Sentenced to Probation				Detention Sentence								Warrants/Remands				Other						DYS Committed				Missing						
		Felony		Misdemeanor		Technical Violator		New Charges		Probation Sentence		Detention Sentence		Valid Court Order (VCO) Truancy		Awaiting DSS (Social Services) Placement		Failure to Appear (FTA)		Failure to Comply (FTC)		Interstate Compact on Juveniles (ICJ) Hold		Immigration Hold		No Bond Hold		Out-of-Country Warrant		Institutional		Parole		Missing				
		#	%	#	%	#	%	#	%	#	%	#	%	#	%	#	%	#	%	#	%	#	%	#	%	#	%	#	%	#	%	#	%	#	%			
Central																																						
	1st	20	2	10.0%	2	10.0%	2	10.0%	0	0.0%	0	0.0%	0	0.0%	0	0.0%	0	0.0%	3	15.0%	7	35.0%	0	0.0%	0	0.0%	0	0.0%	0	0.0%	0	0.0%	0	0.0%	0	0.0%	4	20.0%
	2nd	46	23	50.0%	4	8.7%	0	0.0%	0	0.0%	0	0.0%	0	0.0%	0	0.0%	1	2.2%	15	32.6%	0	0.0%	0	0.0%	0	0.0%	0	0.0%	0	0.0%	0	0.0%	0	0.0%	3	6.5%		
	5th	1	0	0.0%	0	0.0%	0	0.0%	0	0.0%	0	0.0%	0	0.0%	0	0.0%	0	0.0%	1	100.0%	0	0.0%	0	0.0%	0	0.0%	0	0.0%	0	0.0%	0	0.0%	0	0.0%	0	0.0%		
	18th	42	12	28.6%	11	26.2%	0	0.0%	0	0.0%	0	0.0%	1	2.4%	0	0.0%	0	0.0%	2	4.8%	9	21.4%	0	0.0%	0	0.0%	0	0.0%	0	0.0%	0	0.0%	0	0.0%	7	16.7%		
Central Total		109	37	34%	17	16%	2	1.8%	0	0.0%	0	0.0%	1	0.9%	0	0.0%	0	0.0%	6	6%	32	29%	0	0.0%	0	0.0%	0	0.0%	0	0.0%	0	0.0%	0	0.0%	14	12.8%		
Northeast																																						
	8th	15	6	40.0%	0	0.0%	0	0.0%	0	0.0%	0	0.0%	0	0.0%	0	0.0%	0	0.0%	8	53.3%	0	0.0%	0	0.0%	0	0.0%	0	0.0%	0	0.0%	0	0.0%	0	0.0%	1	6.7%		
	13th	2	1	50.0%	0	0.0%	0	0.0%	0	0.0%	0	0.0%	0	0.0%	0	0.0%	0	0.0%	0	0.0%	0	0.0%	0	0.0%	0	0.0%	0	0.0%	0	0.0%	0	0.0%	1	50.0%				
	17th	24	13	54.2%	1	4.2%	0	0.0%	0	0.0%	0	0.0%	0	0.0%	0	0.0%	2	8.3%	6	25.0%	0	0.0%	0	0.0%	0	0.0%	0	0.0%	0	0.0%	0	0.0%	2	8.3%				
	19th	30	12	40.0%	5	16.7%	5	16.7%	0	0.0%	0	0.0%	1	3.3%	0	0.0%	0	0.0%	6	20.0%	0	0.0%	0	0.0%	0	0.0%	0	0.0%	0	0.0%	0	0.0%	0	0.0%	0	0.0%		
	20th	4	2	50.0%	0	0.0%	0	0.0%	0	0.0%	0	0.0%	0	0.0%	0	0.0%	0	0.0%	1	25.0%	0	0.0%	0	0.0%	0	0.0%	0	0.0%	0	0.0%	0	0.0%	1	25.0%				
Northeast Total		75	34	45%	6	8%	5	6.7%	0	0.0%	0	0.0%	1	1.3%	0	0.0%	0	0.0%	3	4.0%	21	28%	0	0.0%	0	0.0%	0	0.0%	0	0.0%	0	0.0%	0	0.0%	5	7%		
Southern																																						
	3rd	0	0	0.0%	0	0.0%	0	0.0%	0	0.0%	0	0.0%	0	0.0%	0	0.0%	0	0.0%	0	0.0%	0	0.0%	0	0.0%	0	0.0%	0	0.0%	0	0.0%	0	0.0%	0	0.0%	0	0.0%		
	4th	60	23	38.3%	7	11.7%	0	0.0%	1	1.7%	0	0.0%	1	1.7%	0	0.0%	0	0.0%	5	8.3%	17	28.3%	1	1.7%	0	0.0%	0	0.0%	0	0.0%	0	0.0%	0	0.0%	5	8.3%		
	10th	14	4	28.6%	2	14.3%	0	0.0%	0	0.0%	0	0.0%	2	14.3%	0	0.0%	0	0.0%	2	14.3%	4	28.6%	0	0.0%	0	0.0%	0	0.0%	0	0.0%	0	0.0%	0	0.0%	0	0.0%		
	11th	7	2	28.6%	1	14.3%	0	0.0%	0	0.0%	0	0.0%	0	0.0%	0	0.0%	0	0.0%	1	14.3%	0	0.0%	0	0.0%	0	0.0%	0	0.0%	0	0.0%	0	0.0%	3	42.9%				
	12th	0	0	0.0%	0	0.0%	0	0.0%	0	0.0%	0	0.0%	0	0.0%	0	0.0%	0	0.0%	0	0.0%	0	0.0%	0	0.0%	0	0.0%	0	0.0%	0	0.0%	0	0.0%	0	0.0%	0	0.0%		
	15th	2	2	100.0%	0	0.0%	0	0.0%	0	0.0%	0	0.0%	0	0.0%	0	0.0%	0	0.0%	0	0.0%	0	0.0%	0	0.0%	0	0.0%	0	0.0%	0	0.0%	0	0.0%	0	0.0%	0	0.0%		
	16th	0	0	0.0%	0	0.0%	0	0.0%	0	0.0%	0	0.0%	0	0.0%	0	0.0%	0	0.0%	0	0.0%	0	0.0%	0	0.0%	0	0.0%	0	0.0%	0	0.0%	0	0.0%	0	0.0%	0	0.0%		
Southern Total		83	31	37%	10	12%	0	0.0%	1	1.2%	0	0.0%	3	3.6%	0	0.0%	0	0.0%	7	8%	22	27%	1	1.2%	0	0.0%	0	0.0%	0	0.0%	0	0.0%	0	0.0%	8	10%		
Western																																						
	6th	0	0	0.0%	0	0.0%	0	0.0%	0	0.0%	0	0.0%	0	0.0%	0	0.0%	0	0.0%	0	0.0%	0	0.0%	0	0.0%	0	0.0%	0	0.0%	0	0.0%	0	0.0%	0	0.0%	0	0%		
	7th	1	0	0.0%	0	0.0%	0	0.0%	1	100.0%	0	0.0%	0	0.0%	0	0.0%	0	0.0%	0	0.0%	0	0.0%	0	0.0%	0	0.0%	0	0.0%	0	0.0%	0	0.0%	0	0.0%	0	0%		
	9th	0	0	0.0%	0	0.0%	0	0.0%	0	0.0%	0	0.0%	0	0.0%	0	0.0%	0	0.0%	0	0.0%	0	0.0%	0	0.0%	0	0.0%	0	0.0%	0	0.0%	0	0.0%	0	0.0%	0	0%		
	14th	0	0	0.0%	0	0.0%	0	0.0%	0	0.0%	0	0.0%	0	0.0%	0	0.0%	0	0.0%	0	0.0%	0	0.0%	0	0.0%	0	0.0%	0	0.0%	0	0.0%	0	0.0%	0	0.0%	0	0%		
	21st	24	6	25.0%	3	12.5%	0	0.0%	0	0.0%	0	0.0%	1	4.2%	0	0.0%	0	0.0%	12	50.0%	0	0.0%	0	0.0%	0	0.0%	0	0.0%	0	0.0%	0	0.0%	2	8%				
	22nd	0	0	0.0%	0	0.0%	0	0.0%	0	0.0%	0	0.0%	0	0.0%	0	0.0%	0	0.0%	0	0.0%	0	0.0%	0	0.0%	0	0.0%	0	0.0%	0	0.0%	0	0.0%	0	0.0%	0	0%		
Western Total		25	6	24%	3	12.0%	0	0.0%	1	4.0%	0	0.0%	1	4.0%	0	0.0%	0	0.0%	12	48%	0	0.0%	0	0.0%	0	0.0%	0	0.0%	0	0.0%	0	0.0%	0	0.0%	2	8%		
Individual RD Totals		292	108	37%	36	12%	7	2.4%	2	0.7%	0	0.0%	6	2.1%	0	0.0%	0	0.0%	16	5%	87	30%	1	0.3%	0	0.0%	0	0.0%	0	0.0%	0	0.0%	0	0.0%	29	10%		
Statewide Totals		292	144	49.3%	9	3.1%	6	2.1%	0	0.0%	6	2.1%	0	0.0%	0	0.0%	103	35.3%	1	0.3%	0	0.0%	0	0.0%	0	0.0%	0	0.0%	0	0.0%	0	0.0%	29	10%				

Central Region

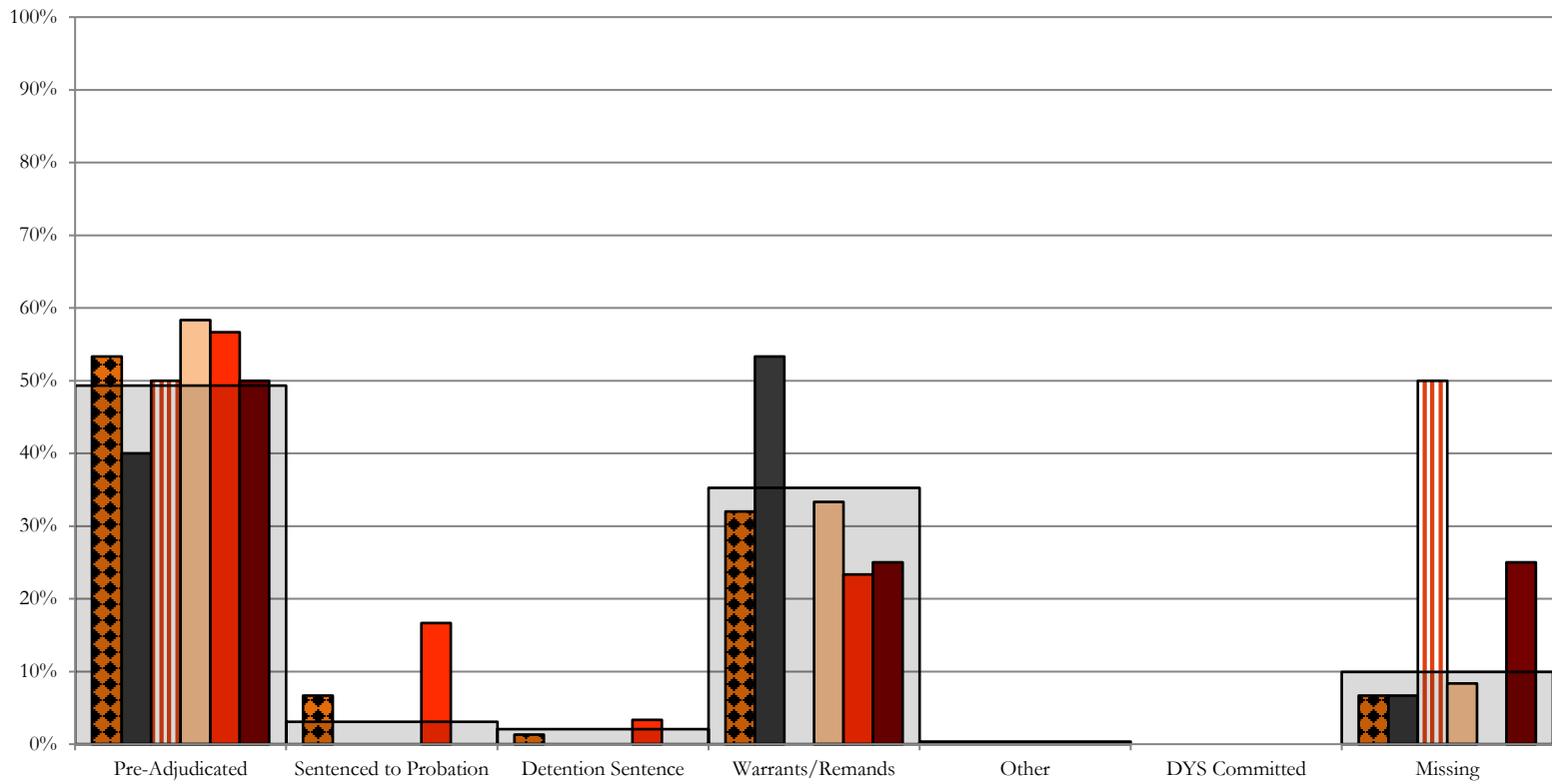
CYDC Reason Detained by Judicial District

March 2020 New Admits



- CENTRAL REGION, 109 New Admits
- 1st JD, 20 New Admits
- 5th JD, 1 New Admits
- 2nd JD, 46 New Admits
- 18th JD, 42 New Admits
- STATEWIDE, 292 New Admits

Northeast Region CYDC Reason Detained by Judicial District March 2020 New Admits

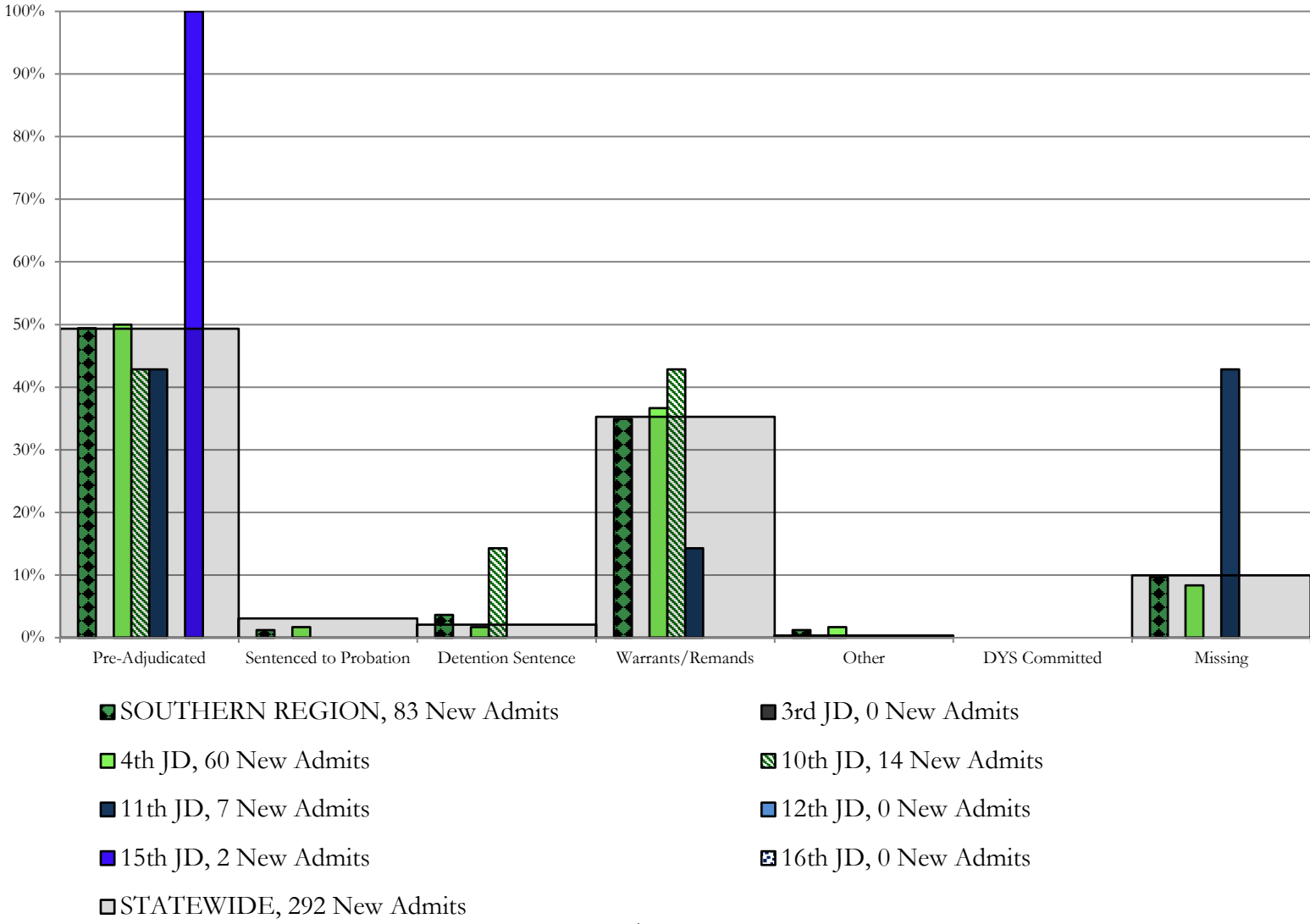


- NORTHEAST REGION, 75 New Admits
- 8th JD, 15 New Admits
- 13th JD, 2 New Admits
- 17th JD, 24 New Admits
- 19th JD, 30 New Admits
- 20th JD, 4 New Admits
- STATEWIDE, 292 New Admits

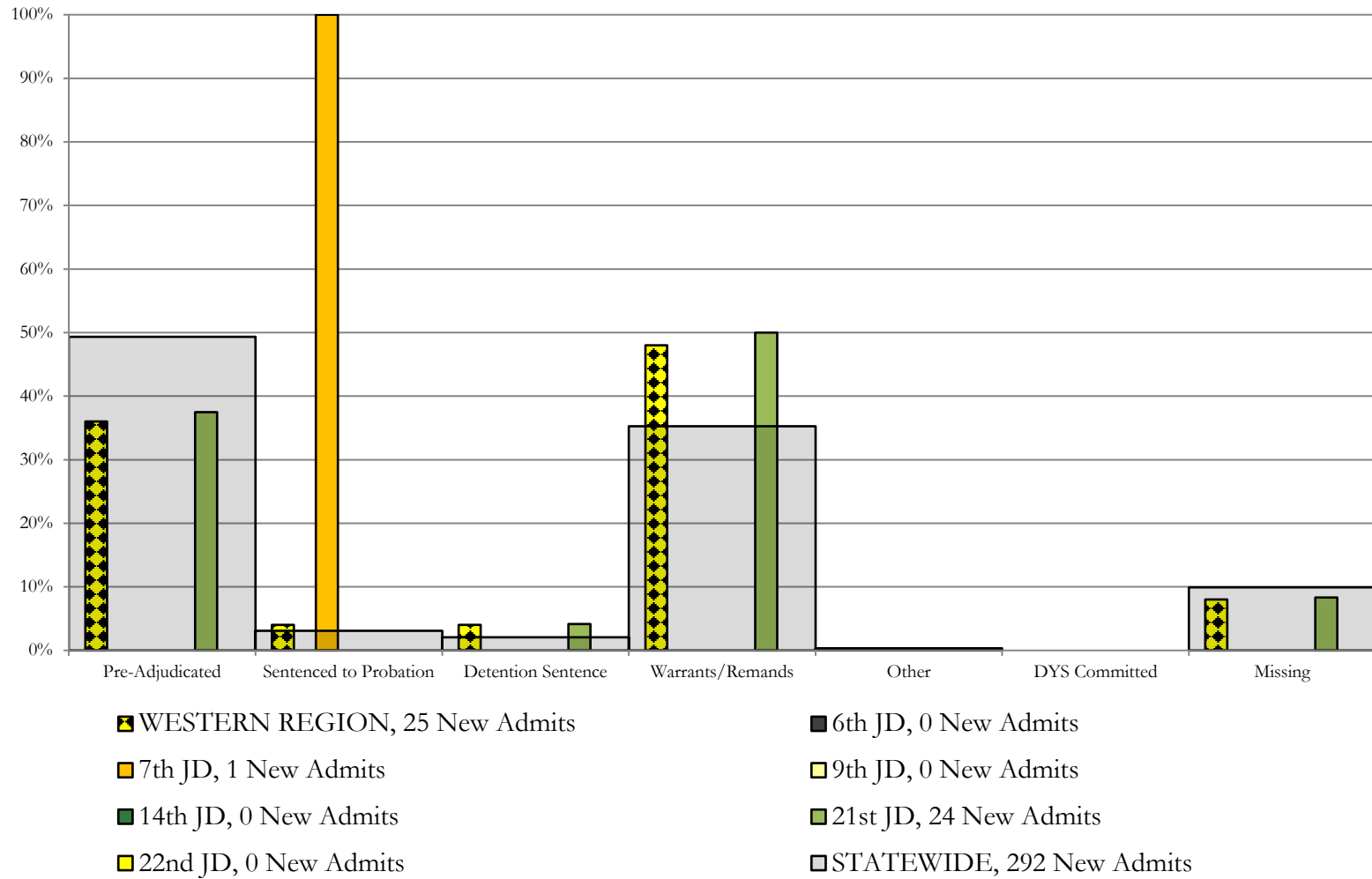
Southern Region

CYDC Reason Detained by Judicial District

March 2020 New Admits



Western Region CYDC Reason Detained by Judicial District March 2020 New Admits



March 2020 CYDC Supplemental Report

DYS Detention Maximum Youth Served by Judicial District¹

Region	JD	Detention Capacity	Detention ADP		Maximum Youth Served on a Single Day ^{2,3}			
			March 2020	YTD	March 2020		YTD	
					Number of Youth	% of Detention Capacity	Number of Youth	% of Detention Capacity
<i>Central</i>								
	1st	35	22.8	18.8	27	77.1%	34	97.1%
	2nd	49	35.2	38.1	43	87.8%	52	106.1%
	5th	4	2.2	0.9	4	100.0%	4	100.0%
	18th	48	47.4	51.1	59	122.9%	71	147.9%
Central Region		136	107.6	108.8	122	89.7%	136	100.0%
<i>Northeast</i>								
	8th	14	13.2	13.7	17	121.4%	21	150.0%
	13th	5	2.7	3.2	4	80.0%	8	160.0%
	17th	28	19.1	21.9	23	82.1%	30	107.1%
	19th	18	11.0	11.3	18	100.0%	20	111.1%
	20th	8	2.7	4.5	5	62.5%	8	100.0%
Northeast Region		73	48.7	54.5	61	83.6%	68	93.2%
<i>Southern</i>								
	3rd	2	2.0	2.6	2	100.0%	8	400.0%
	4th	54	47.1	47.0	52	96.3%	61	113.0%
	10th	14	6.3	4.9	10	71.4%	11	78.6%
	11th	3	3.1	1.8	6	200.0%	6	200.0%
	12th	4	2.6	2.1	3	75.0%	6	150.0%
	15th	2	2.9	1.6	5	250.0%	5	250.0%
	16th	3	0.0	0.5	0	0.0%	3	100.0%
Southern Region		82	63.9	60.5	72	87.8%	76	92.7%
<i>Western</i>								
	6th	5	2.0	0.4	2	40.0%	2	40.0%
	7th	5	0.2	0.6	1	20.0%	4	80.0%
	9th	3	1.0	1.0	1	33.3%	4	133.3%
	14th	3	1.0	1.1	1	33.3%	3	100.0%
	21st	16	13.2	11.3	16	100.0%	20	125.0%
	22nd	4	2.0	0.9	2	50.0%	5	125.0%
Western Region		36	19.3	15.4	23	63.9%	24	66.7%
<i>Missing JD or Multiple JDs</i>			3.5	1.3				
Statewide		327	243.0	240.5	263	80.4%	283	86.5%

¹ Maximum youth served is the highest number of youth in detention on a single day during the month or fiscal year.

² Regional figures are not the sum of judicial districts, but represent the maximum count on one day for the entire region.

³ State figures are not the sum of regional figures, but represent the maximum count on one day for the entire state.

March 2020 CYDC Supplemental Report

CYDC Community ADP by Judicial District

Region	JD	Committed		Diversion		ICJ		Municipal		Pre-Adjudicated		Sentenced		VCO		Total	
		March 2020	YTD	March 2020	YTD	March 2020	YTD	March 2020	YTD	March 2020	YTD	March 2020	YTD	March 2020	YTD	March 2020	YTD
<i>Central</i>																	
	1st	1.1	2.1	1.0	2.5	76.7	0.0	208.1	53.4	34.0	182.7	0.0	36.2	320.9	0.0	641.8	277.1
	2nd	2.0	2.6	1.0	0.8	0.0	0.3	176.0	0.0	63.6	141.6	0.0	44.8	242.6	0.0	485.2	190.0
	5th	0.0	0.0	12.0	12.9	0.0	0.0	16.9	0.0	32.0	12.9	0.0	36.0	60.9	0.0	121.7	61.8
	18th	1.0	2.1	2.4	0.9	1.0	0.1	313.2	1.0	32.6	289.3	0.0	33.6	350.2	0.0	700.4	327.1
Central Total		4.2	6.8	16.4	17.2	77.7	0.4	714.1	54.4	162.2	626.6	0.0	150.6	974.6	0.0	1949.2	856.0
<i>Northeast</i>																	
	8th	0.0	0.0	1.8	5.5	0.0	0.0	84.4	0.0	54.5	74.8	0.0	51.0	140.6	0.0	281.3	131.2
	13th	0.0	0.0	0.0	0.0	31.0	0.0	12.0	30.5	3.0	14.6	0.0	3.1	46.0	0.5	92.1	48.7
	17th	1.0	0.7	2.0	1.1	0.0	0.0	339.1	0.0	86.7	304.9	0.0	81.0	428.8	0.5	857.7	388.1
	19th	1.0	0.4	0.0	0.0	0.0	0.0	79.8	1.2	14.5	76.7	0.0	26.4	95.2	0.2	190.4	105.1
	20th	0.0	0.2	65.4	68.1	1.0	0.0	121.4	1.0	11.0	102.1	2.0	10.0	200.8	2.0	401.6	183.3
Northeast Total		2.0	1.2	69.2	74.7	32.0	0.0	636.7	32.7	169.7	573.0	2.0	171.5	911.5	3.2	1823.0	856.5
<i>Southern</i>																	
	3rd	0.0	0.0	0.0	0.0	0.0	0.0	28.0	0.0	5.0	21.6	0.0	4.0	33.0	0.0	66.0	25.6
	4th	0.0	0.6	0.0	0.0	63.0	0.0	166.4	46.9	44.4	137.5	0.0	40.6	273.8	0.0	547.6	225.6
	10th	0.0	0.0	0.0	0.0	0.0	0.0	18.1	0.8	4.0	16.9	0.7	2.9	22.8	0.6	45.6	21.2
	11th	0.0	0.0	0.0	0.0	13.8	0.0	19.4	5.0	10.0	12.5	0.0	10.3	43.1	0.0	86.2	27.8
	12th	0.0	0.0	1.8	2.5	0.7	0.0	7.6	1.0	1.6	6.1	0.0	1.6	11.8	0.0	23.6	11.2
	15th	0.0	0.0	2.5	3.2	0.0	0.0	3.7	0.0	8.8	2.4	0.0	7.9	15.0	0.0	30.0	13.5
	16th	0.0	0.0	0.0	0.0	0.0	0.0	6.0	0.0	1.0	4.8	13.0	0.4	20.0	15.4	40.0	20.5
Southern Total		0.0	0.6	4.3	5.7	77.5	0.0	249.2	53.7	74.8	201.7	13.7	67.7	419.5	16.0	839.0	345.4
<i>Western</i>																	
	6th	0.0	0.0	0.0	0.0	5.0	0.0	11.9	1.9	0.0	5.6	0.0	0.0	16.9	0.0	33.7	7.5
	7th	0.0	0.0	11.7	14.4	5.6	0.0	14.7	1.7	8.0	10.7	0.0	4.4	40.0	0.0	80.0	31.3
	9th	0.0	0.0	6.9	3.2	11.0	0.0	13.4	4.1	2.0	11.6	0.0	1.3	33.3	0.0	66.7	20.2
	14th	0.0	0.0	8.0	9.4	1.0	0.0	6.6	0.2	2.0	5.6	0.0	0.7	17.6	0.0	35.2	15.8
	21st	0.0	0.0	0.0	0.0	0.0	0.0	59.2	0.0	23.0	60.9	0.0	21.6	82.2	0.0	164.3	82.5
	22nd	0.0	0.0	0.0	0.0	0.0	0.0	7.6	0.0	8.0	4.3	0.0	10.6	15.6	0.0	31.3	15.0
Western Total		0.0	0.0	26.6	26.9	22.6	0.0	113.4	7.9	43.0	98.7	0.0	38.7	205.6	0.0	411.2	172.3
Statewide Total		6.1	8.7	116.6	124.4	209.8	0.4	1,713.3	148.8	449.6	1,500.1	15.7	428.6	2511.2	19.2	5,022.3	2,230.2