

February 2020 FY 2019-2020 CYDC JDSAG SUPPLEMENTAL REPORT

Prepared by the Division of Youth Services (DYS)
Data Management & Analysis
March 19, 2020



COLO R A D O

Division of Youth Services

Office of Children, Youth & Families

February 2020 CYDC Supplemental Report

DYS Commitment ADP & New Commitments by Judicial District

Region	JD ¹	2020 Population Estimates ²	ADP ³		New Commitments		
			February 2020	YTD	February 2020	YTD	YTD Rate ⁴
<i>Central</i>							
	1st	54,722	57.3	71.4	0	8	1.5
	2nd	57,309	79.0	74.3	1	28	4.9
	5th	9,320	4.1	4.1	1	1	1.1
	18th	115,605	73.0	75.1	4	26	2.2
Central Total		236,956	213.4	225.0	6	63	2.7
<i>Northeast</i>							
	8th	34,597	15.2	18.5	0	6	1.7
	13th	8,496	1.2	2.6	0	1	1.2
	17th	69,940	39.9	44.7	1	19	2.7
	19th	38,548	36.0	37.9	8	19	4.9
	20th	31,121	4.0	3.9	0	1	0.3
Northeast Total		182,702	96.3	107.6	9	46	2.5
<i>Southern</i>							
	3rd	1,817	3.0	3.0	0	0	0.0
	4th	83,065	62.4	68.0	0	20	2.4
	10th	18,110	9.0	10.3	1	5	2.8
	11th	7,264	4.0	3.1	0	2	2.8
	12th	5,399	3.0	4.6	0	3	5.6
	15th	2,125	2.0	2.8	0	0	0.0
	16th	2,762	3.0	2.1	0	1	3.6
Southern Total		120,542	86.3	93.8	1	31	2.6
<i>Western</i>							
	6th	7,285	0.0	1.9	0	0	0.0
	7th	10,595	6.9	7.1	0	4	3.8
	9th	8,578	4.8	4.4	0	0	0.0
	14th	5,752	0.0	0.0	0	0	0.0
	21st	16,322	29.0	34.3	3	12	7.4
	22nd	3,063	7.8	7.0	0	6	19.6
Western Total		51,595	48.5	54.7	3	22	4.3
Statewide Total		591,795	444.5	481.0	19	162	2.7

¹ JD represents the judicial district in which the client was committed. Regional totals are a sum of their respective judicial districts. Regional totals reported here may differ slightly from those reported in the Monthly Population Report, where region is defined by active caseloads.

² Source: DOLA 2020 Estimates.

³ Due to rounding, totals shown may not be an exact sum of the subtotals.

⁴ Per 10,000 youth in the population.

February 2020 CYDC Supplemental Report

DYS Detention ADP and New Detention Admissions by Judicial District

Region	JD	2020 Population Estimates ¹	ADP		New Admits		
			February 2020	YTD	February 2020	YTD	YTD New Admit Rate ²
<i>Central</i>							
	1st	54,722	22.7	18.3	45	279	51.0
	2nd	57,309	33.1	38.5	56	473	82.5
	5th	9,320	1.2	0.7	7	14	15.0
	18th	115,605	49.7	51.6	65	614	53.1
Central Total		236,956	106.7	109.0	173	1,380	58.2
<i>Northeast</i>							
	8th	34,597	16.5	13.8	28	201	58.1
	13th	8,496	5.4	3.3	5	43	50.6
	17th	69,940	18.4	22.2	32	301	43.0
	19th	38,548	13.4	11.3	35	232	60.2
	20th	31,121	3.8	4.7	10	69	22.2
Northeast Total		182,702	57.5	55.2	110	846	46.3
<i>Southern</i>							
	3rd	1,817	1.9	2.7	1	15	82.6
	4th	83,065	48.3	46.9	56	493	59.4
	10th	18,110	6.0	4.8	10	114	62.9
	11th	7,264	3.6	1.6	6	31	42.7
	12th	5,399	3.9	2.1	4	19	35.2
	15th	2,125	3.0	1.4	1	10	47.1
	16th	2,762	0.6	0.6	1	11	39.8
Southern Total		120,542	67.4	60.1	79	693	57.5
<i>Western</i>							
	6th	7,285	1.0	0.2	2	7	9.6
	7th	10,595	0.3	0.7	3	20	18.9
	9th	8,578	0.2	1.0	2	21	24.5
	14th	5,752	1.1	1.1	0	9	15.6
	21st	16,322	10.6	11.1	18	146	89.4
	22nd	3,063	1.0	0.7	2	11	35.9
Western Total		51,595	14.2	14.9	27	214	41.5
<i>Missing JD or Multiple JDs</i>			<i>0.9</i>	<i>1.0</i>			
Statewide Total		591,795	246.8	240.2	389	3,133	52.9

¹ Source: DOLA 2020 Estimates.

² Per 10,000 youth in the population.

February 2020 CYDC Supplemental Report

DYS Detention LOS by Judicial District				
Region	JD	YTD Detention Releases	YTD LOS (days)	LOS (days) Compared to State AVG
<i>Central</i>				
	1st	267	15.3	-2.3
	2nd	475	16.2	-1.5
	5th	10	12.7	-5.0
	18th	591	18.7	1.0
Central Total		1,343	17.1	-0.6
<i>Northeast</i>				
	8th	197	16.3	-1.4
	13th	42	12.1	-5.6
	17th	306	15.3	-2.4
	19th	226	11.7	-6.0
	20th	73	17.2	-0.5
Northeast Total		844	14.6	-3.1
<i>Southern</i>				
	3rd	21	21.0	3.4
	4th	483	21.7	4.1
	10th	114	6.9	-10.8
	11th	29	11.1	-6.5
	12th	17	16.2	-1.5
	15th	6	15.4	-2.3
	16th	11	10.8	-6.9
Southern Total		681	18.4	0.7
<i>Western</i>				
	6th	6	6.0	-11.6
	7th	22	6.4	-11.2
	9th	24	15.4	-2.3
	14th	8	26.2	8.6
	21st	130	11.7	-5.9
	22nd	9	13.7	-3.9
Western Total		199	12.1	-5.6
Statewide Total		3,084	17.7	-

February 2020 CDYC Supplemental Report

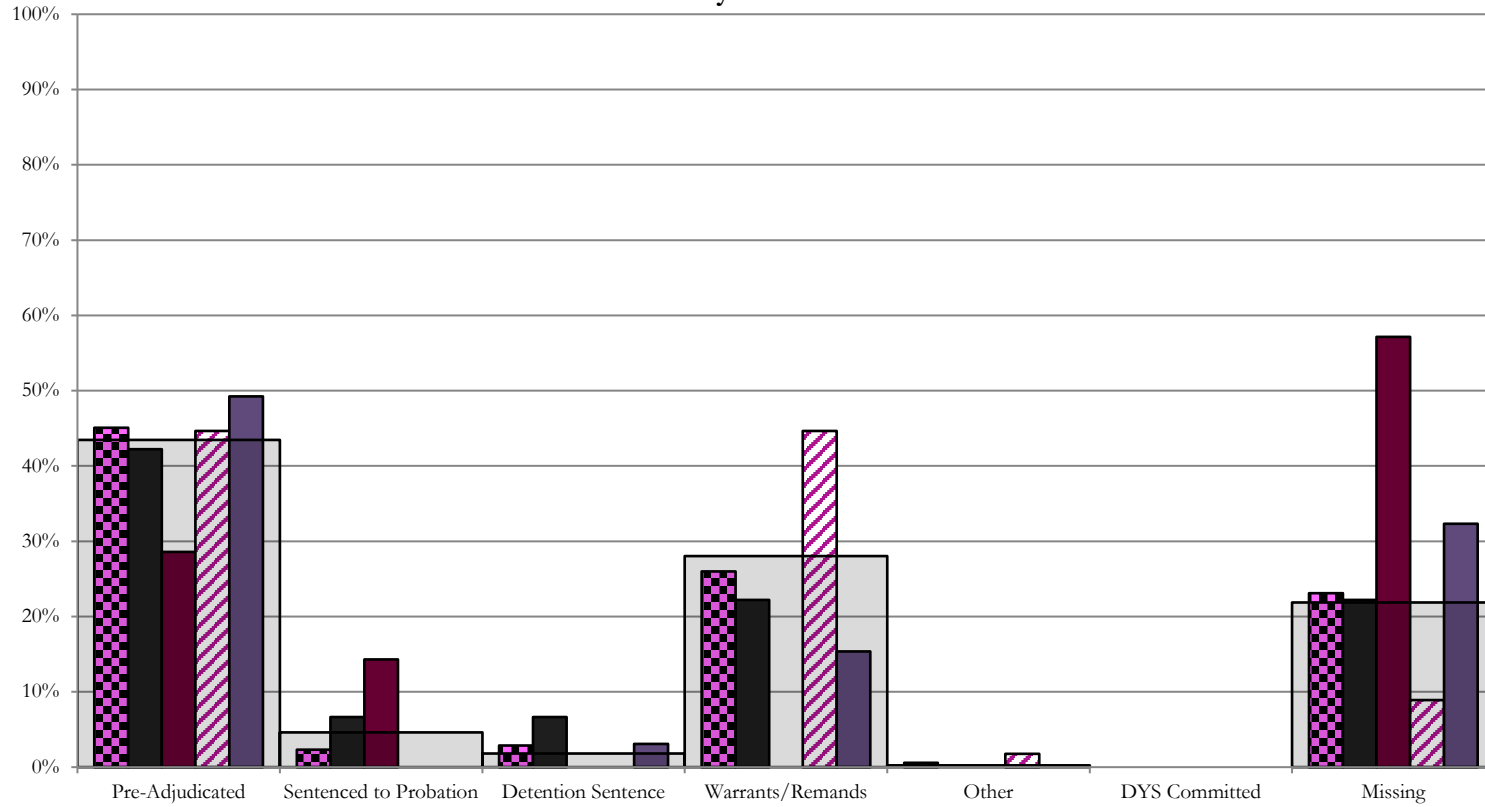
CYDC Reason Detained (RD) by Judicial District

Region	JD	Pre-Adjudicated				Sentenced to Probation				Detention Sentence								Warrants/Remands				Other						DYS Committed		Missing								
		Felony		Misdemeanor		Technical Violator		New Charges		Probation Sentence		Detention Sentence		Valid Court Order (VCO) Truancy		Awaiting DSS (Social Services) Placement		Failure to Appear (FTA)		Failure to Comply (FTC)		Interstate Compact on Juveniles (ICJ) Hold		Immigration Hold		No Bond Hold		Out-of-Country Warrant		Institutional		Parole		Missing				
		#	%	#	%	#	%	#	%	#	%	#	%	#	%	#	%	#	%	#	%	#	%	#	%	#	%	#	%	#	%	#	%	#	%			
Central																																						
	1st	45	12	26.7%	7	15.6%	3	6.7%	0	0.0%	0	0.0%	3	6.7%	0	0.0%	0	0.0%	3	6.7%	7	15.6%	0	0.0%	0	0.0%	0	0.0%	0	0.0%	0	0.0%	0	0.0%	0	0.0%	10	22.2%
	2nd	56	20	35.7%	5	8.9%	0	0.0%	0	0.0%	0	0.0%	0	0.0%	0	0.0%	10	17.9%	15	26.8%	1	1.8%	0	0.0%	0	0.0%	0	0.0%	0	0.0%	0	0.0%	0	0.0%	0	0.0%	5	8.9%
	5th	7	2	28.6%	0	0.0%	1	14.3%	0	0.0%	0	0.0%	0	0.0%	0	0.0%	0	0.0%	0	0.0%	0	0.0%	0	0.0%	0	0.0%	0	0.0%	0	0.0%	0	0.0%	0	0.0%	0	0.0%	4	57.1%
	18th	65	17	26.2%	15	23.1%	0	0.0%	0	0.0%	0	0.0%	2	3.1%	0	0.0%	0	0.0%	1	1.5%	9	13.8%	0	0.0%	0	0.0%	0	0.0%	0	0.0%	0	0.0%	0	0.0%	0	0.0%	21	32.3%
Central Total		173	51	29%	27	16%	4	2.3%	0	0.0%	0	0.0%	5	2.9%	0	0.0%	0	0.0%	14	8%	31	18%	1	0.6%	0	0.0%	0	0.0%	0	0.0%	0	0.0%	0	0.0%	40	23.1%		
Northeast																																						
	8th	28	2	7.1%	2	7.1%	0	0.0%	0	0.0%	0	0.0%	0	0.0%	0	0.0%	0	0.0%	2	7.1%	0	0.0%	0	0.0%	0	0.0%	0	0.0%	0	0.0%	0	0.0%	0	0.0%	0	0.0%	22	78.6%
	13th	5	1	20.0%	1	20.0%	0	0.0%	0	0.0%	0	0.0%	0	0.0%	0	0.0%	0	0.0%	1	20.0%	0	0.0%	0	0.0%	0	0.0%	0	0.0%	0	0.0%	0	0.0%	0	0.0%	2	40.0%		
	17th	32	6	18.8%	3	9.4%	0	0.0%	0	0.0%	0	0.0%	0	0.0%	0	0.0%	1	3.1%	11	34.4%	0	0.0%	0	0.0%	0	0.0%	0	0.0%	0	0.0%	0	0.0%	0	0.0%	11	34.4%		
	19th	35	11	31.4%	1	2.9%	10	28.6%	0	0.0%	0	0.0%	0	0.0%	0	0.0%	6	17.1%	6	17.1%	0	0.0%	0	0.0%	0	0.0%	0	0.0%	0	0.0%	0	0.0%	0	0.0%	1	2.9%		
	20th	10	3	30.0%	2	20.0%	1	10.0%	0	0.0%	0	0.0%	0	0.0%	1	10.0%	1	10.0%	2	20.0%	0	0.0%	0	0.0%	0	0.0%	0	0.0%	0	0.0%	0	0.0%	0	0.0%	0	0.0%	0	0.0%
Northeast Total		110	23	21%	9	8%	11	10.0%	0	0.0%	0	0.0%	0	0.0%	0	0.0%	1	0.9%	8	7.3%	22	20%	0	0.0%	0	0.0%	0	0.0%	0	0.0%	0	0.0%	0	0.0%	36	33%		
Southern																																						
	3rd	1	0	0.0%	0	0.0%	0	0.0%	0	0.0%	0	0.0%	0	0.0%	0	0.0%	1	100.0%	0	0.0%	0	0.0%	0	0.0%	0	0.0%	0	0.0%	0	0.0%	0	0.0%	0	0.0%	0	0.0%		
	4th	56	29	51.8%	9	16.1%	1	1.8%	0	0.0%	0	0.0%	0	0.0%	0	0.0%	4	7.1%	10	17.9%	0	0.0%	0	0.0%	0	0.0%	0	0.0%	0	0.0%	0	0.0%	0	0.0%	3	5.4%		
	10th	10	1	10.0%	3	30.0%	0	0.0%	0	0.0%	0	0.0%	1	10.0%	0	0.0%	2	20.0%	3	30.0%	0	0.0%	0	0.0%	0	0.0%	0	0.0%	0	0.0%	0	0.0%	0	0.0%	0	0.0%	0	0.0%
	11th	6	5	83.3%	0	0.0%	0	0.0%	0	0.0%	0	0.0%	0	0.0%	0	0.0%	0	0.0%	0	0.0%	0	0.0%	0	0.0%	0	0.0%	0	0.0%	0	0.0%	0	0.0%	0	0.0%	1	16.7%		
	12th	4	1	25.0%	0	0.0%	0	0.0%	0	0.0%	0	0.0%	0	0.0%	0	0.0%	1	25.0%	2	50.0%	0	0.0%	0	0.0%	0	0.0%	0	0.0%	0	0.0%	0	0.0%	0	0.0%	0	0.0%		
	15th	1	0	0.0%	0	0.0%	0	0.0%	0	0.0%	0	0.0%	0	0.0%	0	0.0%	0	0.0%	0	0.0%	0	0.0%	0	0.0%	0	0.0%	0	0.0%	0	0.0%	0	0.0%	0	0.0%	1	100.0%		
	16th	1	0	0.0%	0	0.0%	0	0.0%	0	0.0%	0	0.0%	0	0.0%	0	0.0%	0	0.0%	1	100.0%	0	0.0%	0	0.0%	0	0.0%	0	0.0%	0	0.0%	0	0.0%	0	0.0%	0	0.0%		
Southern Total		79	36	46%	12	15%	1	1.3%	0	0.0%	0	0.0%	1	1.3%	0	0.0%	8	10%	16	20%	0	0.0%	0	0.0%	0	0.0%	0	0.0%	0	0.0%	0	0.0%	0	0.0%	5	6%		
Western																																						
	6th	2	0	0.0%	0	0.0%	0	0.0%	0	0.0%	0	0.0%	0	0.0%	0	0.0%	0	0.0%	0	0.0%	0	0.0%	0	0.0%	0	0.0%	0	0.0%	0	0.0%	0	0.0%	0	0.0%	2	100%		
	7th	3	1	33.3%	0	0.0%	0	0.0%	2	66.7%	0	0.0%	0	0.0%	0	0.0%	0	0.0%	0	0.0%	0	0.0%	0	0.0%	0	0.0%	0	0.0%	0	0.0%	0	0.0%	0	0.0%	0	0.0%		
	9th	2	0	0.0%	0	0.0%	0	0.0%	0	0.0%	0	0.0%	0	0.0%	0	0.0%	0	0.0%	0	0.0%	0	0.0%	0	0.0%	0	0.0%	0	0.0%	0	0.0%	0	0.0%	0	0.0%	2	100%		
	14th	0	0	0.0%	0	0.0%	0	0.0%	0	0.0%	0	0.0%	0	0.0%	0	0.0%	0	0.0%	0	0.0%	0	0.0%	0	0.0%	0	0.0%	0	0.0%	0	0.0%	0	0.0%	0	0.0%	0	0.0%		
	21st	18	8	44.4%	1	5.6%	0	0.0%	0	0.0%	0	0.0%	0	0.0%	0	0.0%	2	11.1%	7	38.9%	0	0.0%	0	0.0%	0	0.0%	0	0.0%	0	0.0%	0	0.0%	0	0.0%	0	0.0%		
	22nd	2	0	0.0%	1	50.0%	0	0.0%	0	0.0%	0	0.0%	0	0.0%	0	0.0%	0	0.0%	1	50.0%	0	0.0%	0	0.0%	0	0.0%	0	0.0%	0	0.0%	0	0.0%	0	0.0%	0	0.0%		
Western Total		27	9	33%	2	7.4%	0	0.0%	2	7.4%	0	0.0%	0	0.0%	0	0.0%	2	7.4%	8	30%	0	0.0%	0	0.0%	0	0.0%	0	0.0%	0	0.0%	0	0.0%	0	0.0%	4	15%		
Individual RD Totals		389	119	31%	50	13%	16	4.1%	2	0.5%	0	0.0%	6	1.5%	0	0.0%	1	0.3%	32	8%	77	20%	1	0.3%	0	0.0%	0	0.0%	0	0.0%	0	0.0%	0	0.0%	85	22%		
Statewide Totals		389	169	43.4%	18	4.6%	7	1.8%	0	0.0%	6	1.5%	0	0.0%	1	0.3%	32	8%	77	20%	1	0.3%	0	0.0%	0	0.0%	0	0.0%	0	0.0%	0	0.0%	85	22%				

Central Region

CYDC Reason Detained by Judicial District

February 2020 New Admits



■ CENTRAL REGION, 173 New Admits

■ 5th JD, 7 New Admits

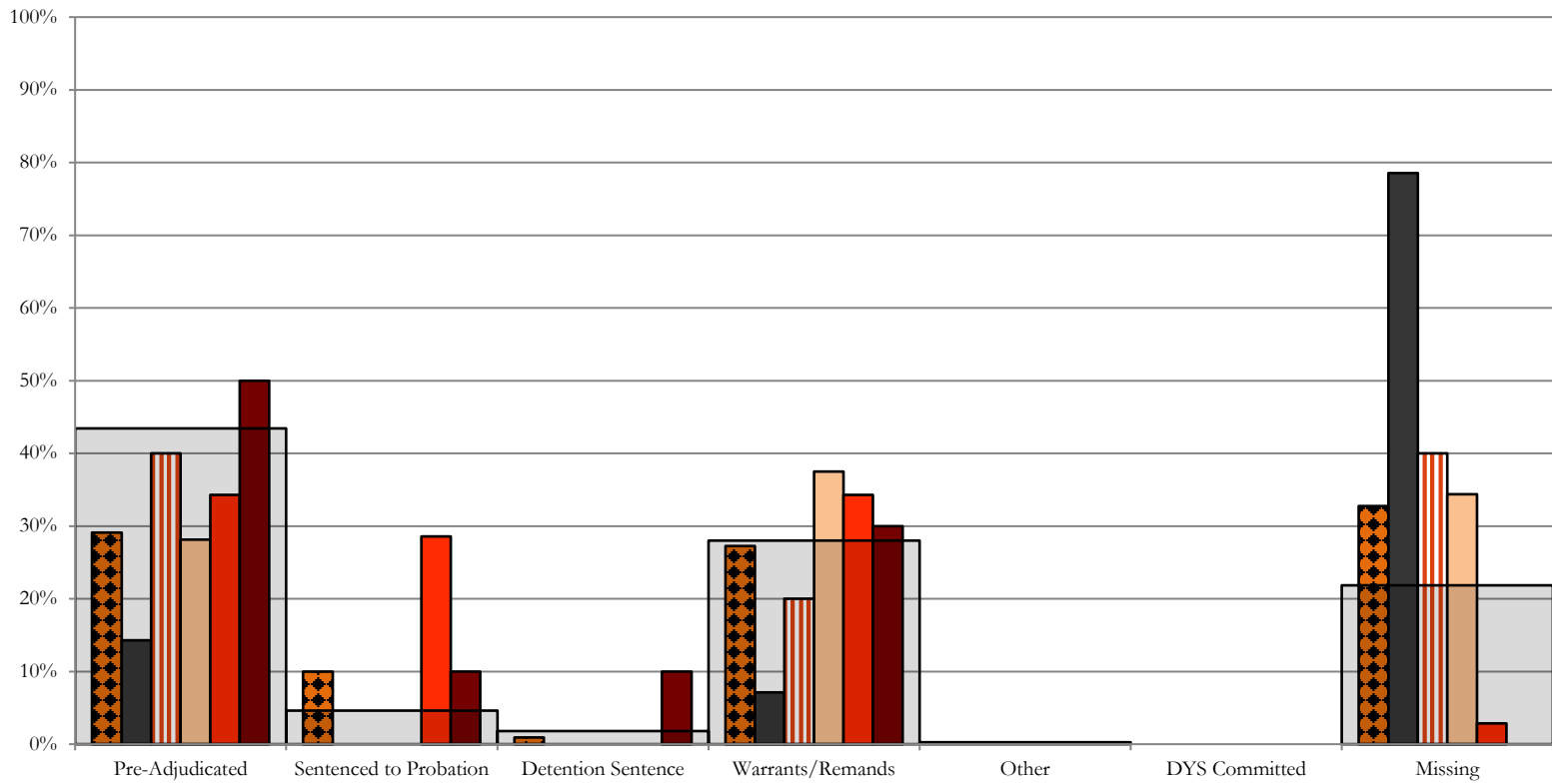
■ 18th JD, 65 New Admits

■ 1st JD, 45 New Admits

■ 2nd JD, 56 New Admits

■ STATEWIDE, 389 New Admits

Northeast Region CYDC Reason Detained by Judicial District February 2020 New Admits

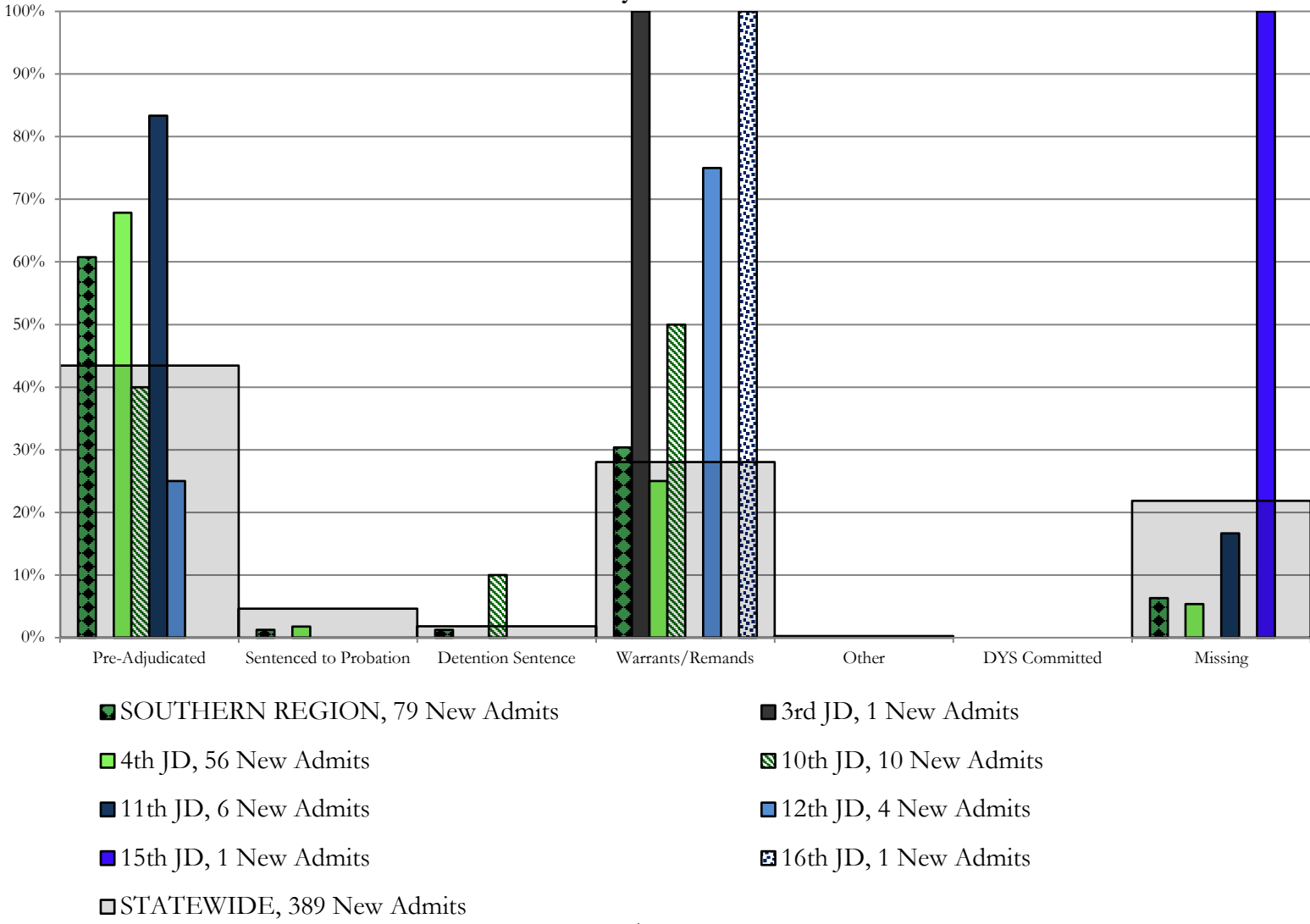


- NORTHEAST REGION, 110 New Admits
- 8th JD, 28 New Admits
- 13th JD, 5 New Admits
- 17th JD, 32 New Admits
- 19th JD, 35 New Admits
- 20th JD, 10 New Admits
- STATEWIDE, 389 New Admits

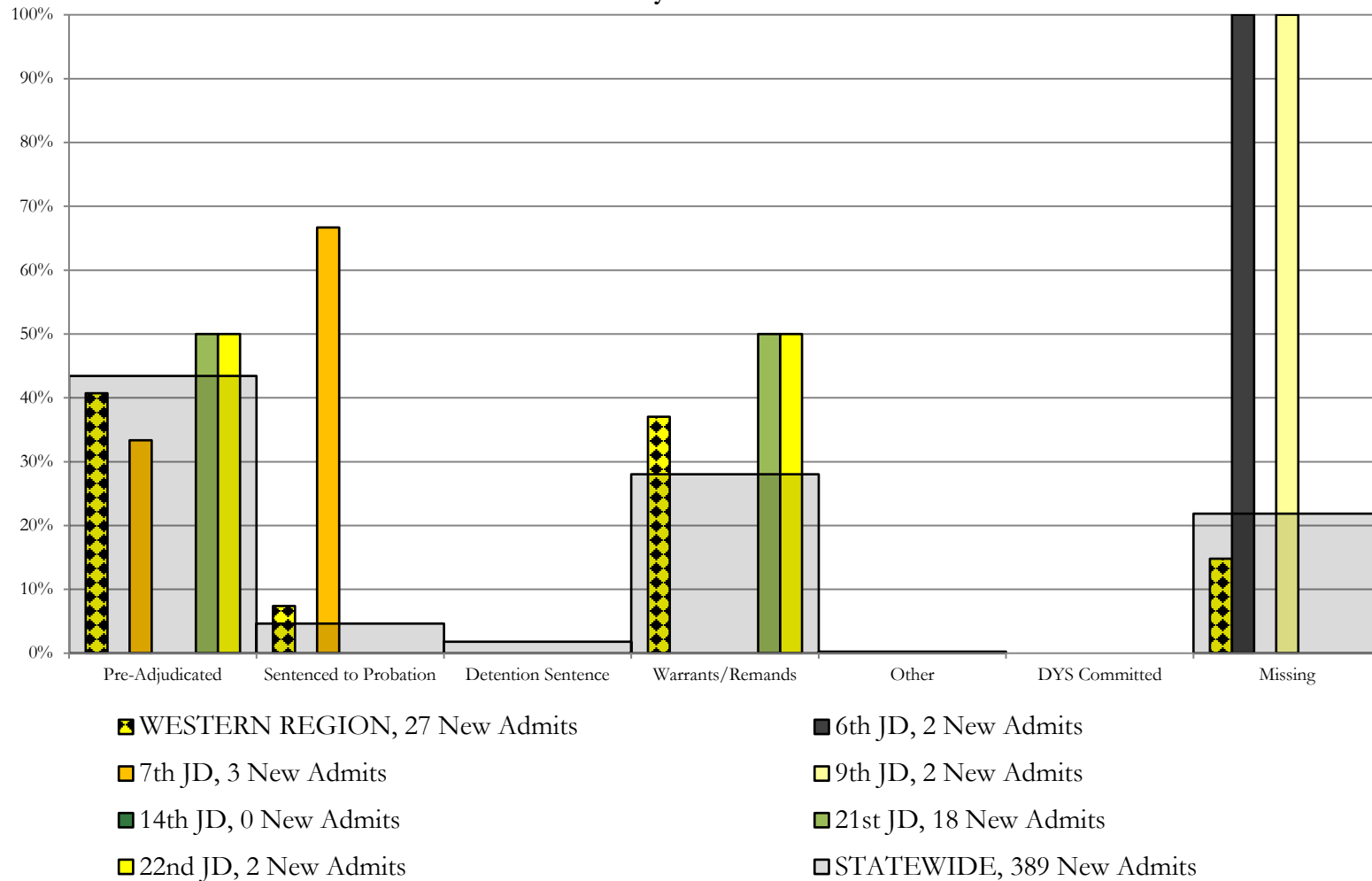
Southern Region

CYDC Reason Detained by Judicial District

February 2020 New Admits



Western Region CYDC Reason Detained by Judicial District February 2020 New Admits



February 2020 CYDC Supplemental Report

DYS Detention Maximum Youth Served by Judicial District¹

Region	JD	Detention Capacity	Detention ADP		Maximum Youth Served on a Single Day ^{2,3}			
			February 2020	YTD	February 2020		YTD	
					Number of Youth	% of Detention Capacity	Number of Youth	% of Detention Capacity
<i>Central</i>								
	1st	35	22.7	18.3	27	77.1%	34	97.1%
	2nd	49	33.1	38.5	39	79.6%	52	106.1%
	5th	4	1.2	0.7	4	100.0%	4	100.0%
	18th	48	49.7	51.6	55	114.6%	71	147.9%
Central Region		136	106.7	109.0	115	84.6%	136	100.0%
<i>Northeast</i>								
	8th	14	16.5	13.8	19	135.7%	21	150.0%
	13th	5	5.4	3.3	7	140.0%	8	160.0%
	17th	28	18.4	22.2	23	82.1%	30	107.1%
	19th	18	13.4	11.3	19	105.6%	20	111.1%
	20th	8	3.8	4.7	6	75.0%	8	100.0%
Northeast Region		73	57.5	55.2	65	89.0%	67	91.8%
<i>Southern</i>								
	3rd	2	1.9	2.7	3	150.0%	8	400.0%
	4th	54	48.3	46.9	53	98.1%	61	113.0%
	10th	14	6.0	4.8	10	71.4%	11	78.6%
	11th	3	3.6	1.6	5	166.7%	5	166.7%
	12th	4	3.9	2.1	6	150.0%	6	150.0%
	15th	2	3.0	1.4	4	200.0%	5	250.0%
	16th	3	0.6	0.6	1	33.3%	3	100.0%
Southern Region		82	67.4	60.1	74	90.2%	74	90.2%
<i>Western</i>								
	6th	5	1.0	0.2	2	40.0%	2	40.0%
	7th	5	0.3	0.7	2	40.0%	4	80.0%
	9th	3	0.2	1.0	2	66.7%	4	133.3%
	14th	3	1.1	1.1	2	66.7%	3	100.0%
	21st	16	10.6	11.1	14	87.5%	20	125.0%
	22nd	4	1.0	0.7	2	50.0%	5	125.0%
Western Region		36	14.2	14.9	19	52.8%	24	66.7%
<i>Missing JD or Multiple JDs</i>			0.9	1.0				
Statewide		327	246.8	240.2	260	79.5%	283	86.5%

¹ Maximum youth served is the highest number of youth in detention on a single day during the month or fiscal year.

² Regional figures are not the sum of judicial districts, but represent the maximum count on one day for the entire region.

³ State figures are not the sum of regional figures, but represent the maximum count on one day for the entire state.

February 2020 CYDC Supplemental Report

CYDC Community ADP by Judicial District

Region	JD	Committed		Diversion		ICJ		Municipal		Pre-Adjudicated		Sentenced		VCO		Total	
		February 2020	YTD	February 2020	YTD	February 2020	YTD	February 2020	YTD	February 2020	YTD	February 2020	YTD	February 2020	YTD	February 2020	YTD
<i>Central</i>																	
	1st	2.0	2.3	0.0	2.7	0.0	0.0	63.6	49.1	212.9	186.9	32.3	37.5	0.0	0.0	310.7	278.5
	2nd	1.2	2.6	1.0	0.8	0.6	0.3	0.0	0.0	143.6	137.7	58.0	42.6	0.0	0.0	204.3	184.0
	5th	0.0	0.0	12.0	13.1	0.0	0.0	0.0	0.0	14.7	12.4	29.0	35.5	0.0	0.0	55.7	61.0
	18th	1.0	2.3	2.0	0.7	0.0	0.1	1.0	1.0	339.8	291.3	35.5	33.7	0.0	0.0	379.4	329.1
Central Total		4.2	7.2	15.0	17.3	0.6	0.4	64.6	50.1	711.1	628.4	154.8	149.3	0.0	0.0	950.2	852.6
<i>Northeast</i>																	
	8th	0.0	0.0	10.0	12.5	0.0	0.0	0.0	0.0	108.8	91.1	87.9	70.9	0.0	0.0	206.7	174.5
	13th	0.0	0.0	0.0	0.0	0.0	0.0	0.0	0.0	11.6	15.0	7.0	3.3	0.0	0.6	18.6	18.9
	17th	1.0	0.6	1.9	0.9	0.0	0.0	0.0	0.0	341.7	304.5	88.5	82.7	0.0	0.5	433.1	389.3
	19th	1.4	0.3	0.0	0.0	0.0	0.0	0.0	1.4	77.0	76.4	23.3	29.0	0.0	0.3	101.8	107.4
	20th	0.0	0.2	71.0	70.6	1.0	1.0	1.0	1.0	151.7	118.7	13.0	12.4	2.0	2.0	239.7	205.9
Northeast Total		2.4	1.1	82.9	84.1	1.0	1.0	1.0	2.4	690.9	605.7	219.7	198.2	2.0	3.4	999.9	895.9
<i>Southern</i>																	
	3rd	0.0	0.0	0.0	0.0	0.0	0.0	0.0	0.0	26.4	20.7	4.2	3.9	0.0	0.0	30.6	24.6
	4th	0.0	0.7	0.0	0.0	0.0	0.0	63.0	44.8	156.8	135.6	40.2	40.5	0.0	0.0	260.1	221.6
	10th	0.0	0.0	0.0	0.0	0.0	0.0	0.0	0.9	21.9	16.8	4.3	2.8	1.5	0.5	27.7	21.0
	11th	0.0	0.0	0.0	0.0	0.0	0.0	6.9	3.9	15.1	11.4	10.0	10.3	0.0	0.0	32.1	25.6
	12th	0.0	0.0	1.0	2.6	0.0	0.0	0.0	1.0	8.6	6.9	1.8	1.6	0.0	0.0	11.4	12.0
	15th	0.0	0.0	3.0	3.3	0.0	0.0	0.0	0.0	3.0	2.9	8.0	7.5	0.0	0.0	14.0	13.7
	16th	0.0	0.0	0.0	0.0	0.0	0.0	0.0	0.0	6.0	4.6	1.0	0.3	13.0	15.7	20.0	20.6
Southern Total		0.0	0.7	4.0	5.9	0.0	0.0	69.9	50.7	237.9	198.9	69.5	66.8	14.5	16.3	395.9	339.2
<i>Western</i>																	
	6th	0.0	0.0	0.0	0.0	0.0	0.0	1.0	0.7	7.9	4.6	0.0	0.0	0.0	0.0	8.9	5.3
	7th	0.0	0.0	16.8	14.9	0.0	0.0	2.6	1.3	13.7	10.2	6.2	4.0	0.0	0.0	39.4	30.3
	9th	0.0	0.0	4.0	2.4	0.0	0.0	8.9	3.1	15.3	11.6	1.7	1.2	0.0	0.0	29.9	18.4
	14th	0.0	0.0	8.4	9.5	0.0	0.0	0.8	0.1	6.6	5.4	2.0	0.5	0.0	0.0	17.8	15.6
	21st	0.0	0.0	0.0	0.0	0.0	0.0	0.0	0.0	63.6	63.2	23.0	21.5	0.0	0.0	86.6	84.7
	22nd	0.0	0.0	0.0	0.0	0.0	0.0	0.0	0.0	7.3	3.9	8.3	11.5	0.0	0.0	15.6	15.4
Western Total		0.0	0.0	29.2	26.8	0.0	0.0	13.4	5.2	114.3	99.0	41.2	38.7	0.0	0.0	198.2	169.6
Statewide Total		6.6	9.0	131.1	134.0	1.6	1.5	148.9	108.3	1,754.3	1,531.9	485.2	453.0	16.5	19.7	2,544.2	2,257.4