

January 2020 FY 2019-2020 CYDC JDSAG SUPPLEMENTAL REPORT

Prepared by the Division of Youth Services (DYS)

Data Management & Analysis

February 21, 2020



COLORADO

Division of Youth Services

Office of Children, Youth & Families

January 2020 CYDC Supplemental Report

DYS Commitment ADP & New Commitments by Judicial District

Region	JD ¹	2020 Population Estimates ²	ADP ³		New Commitments		
			January 2020	YTD	January 2020	YTD	YTD Rate ⁴
<i>Central</i>							
	1st	54,722	62.5	73.8	0	8	1.5
	2nd	57,309	74.8	73.6	5	26	4.5
	5th	9,320	4.0	4.2	0	0	0.0
	18th	115,605	69.2	75.4	6	20	1.7
Central Total		236,956	210.5	226.9	11	54	2.3
<i>Northeast</i>							
	8th	34,597	18.1	18.9	1	6	1.7
	13th	8,496	2.2	2.8	0	1	1.2
	17th	69,940	40.5	45.4	6	18	2.6
	19th	38,548	35.0	38.1	0	11	2.9
	20th	31,121	4.0	3.9	0	1	0.3
Northeast Total		182,702	99.8	109.1	7	37	2.0
<i>Southern</i>							
	3rd	1,817	3.0	3.0	0	0	0.0
	4th	83,065	66.6	68.7	2	19	2.3
	10th	18,110	8.5	10.4	1	3	1.7
	11th	7,264	3.5	3.0	0	2	2.8
	12th	5,399	3.8	4.8	0	3	5.6
	15th	2,125	2.0	2.9	0	0	0.0
	16th	2,762	3.0	2.0	0	1	3.6
Southern Total		120,542	90.3	94.7	3	28	2.3
<i>Western</i>							
	6th	7,285	0.0	2.2	0	0	0.0
	7th	10,595	7.0	7.1	0	4	3.8
	9th	8,578	3.6	4.4	0	0	0.0
	14th	5,752	0.0	0.0	0	0	0.0
	21st	16,322	30.1	35.0	0	9	5.5
	22nd	3,063	7.1	6.9	0	5	16.3
Western Total		51,595	47.7	55.6	0	18	3.5
Statewide Total		591,795	448.3	486.3	21	137	2.3

¹ JD represents the judicial district in which the client was committed. Regional totals are a sum of their respective judicial districts. Regional totals reported here may differ slightly from those reported in the Monthly Population Report, where region is defined by active caseloads.

² Source: DOLA 2020 Estimates.

³ Due to rounding, totals shown may not be an exact sum of the subtotals.

⁴ Per 10,000 youth in the population.

January 2020 CYDC Supplemental Report

DYS Detention ADP and New Detention Admissions by Judicial District

Region	JD	2020 Population Estimates ¹	ADP		New Admits		
			January 2020	YTD	January 2020	YTD	YTD New Admit Rate ²
<i>Central</i>							
	1st	54,722	17.1	17.7	34	234	42.8
	2nd	57,309	31.5	39.2	55	417	72.8
	5th	9,320	0.4	0.6	1	7	7.5
	18th	115,605	61.1	51.9	105	550	47.6
Central Total		236,956	110.1	109.4	195	1,208	51.0
<i>Northeast</i>							
	8th	34,597	11.6	13.4	30	173	50.0
	13th	8,496	4.9	3.0	7	38	44.7
	17th	69,940	22.5	23.1	47	269	38.5
	19th	38,548	14.3	11.1	20	198	51.4
	20th	31,121	2.9	4.8	7	59	19.0
Northeast Total		182,702	56.3	55.4	111	737	40.3
<i>Southern</i>							
	3rd	1,817	1.1	2.8	3	14	77.1
	4th	83,065	43.4	46.8	66	437	52.6
	10th	18,110	7.8	4.6	17	104	57.4
	11th	7,264	2.7	1.3	5	25	34.4
	12th	5,399	2.1	1.8	2	15	27.8
	15th	2,125	3.7	1.2	0	9	42.4
	16th	2,762	0.3	0.6	1	10	36.2
Southern Total		120,542	61.0	59.1	94	614	50.9
<i>Western</i>							
	6th	7,285	0.0	0.1	1	5	6.9
	7th	10,595	0.6	0.7	4	17	16.0
	9th	8,578	0.7	1.1	4	19	22.1
	14th	5,752	1.6	1.1	2	9	15.6
	21st	16,322	11.2	11.2	13	128	78.4
	22nd	3,063	0.3	0.7	2	9	29.4
Western Total		51,595	14.4	14.9	26	187	36.2
<i>Missing JD or Multiple JDs</i>			<i>1.1</i>	<i>1.0</i>			
Statewide Total		591,795	242.9	239.9	426	2,746	46.4

¹ Source: DOLA 2020 Estimates.

² Per 10,000 youth in the population.

January 2020 CYDC Supplemental Report

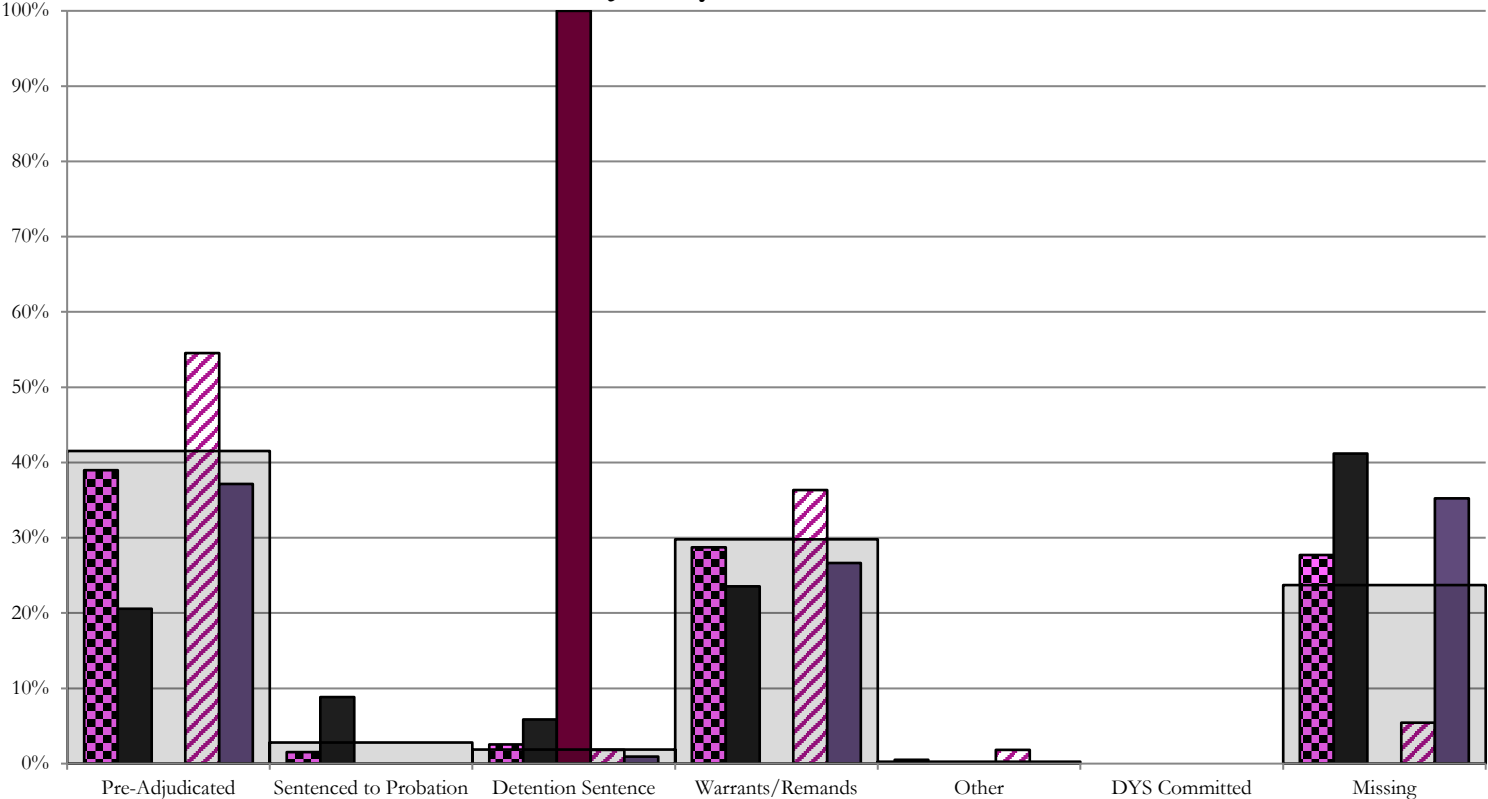
DYS Detention LOS by Judicial District				
Region	JD	YTD Detention Releases	YTD LOS (days)	LOS (days) Compared to State AVG
<i>Central</i>				
	1st	224	14.6	-2.9
	2nd	425	16.3	-1.1
	5th	8	15.4	-2.0
	18th	535	18.7	1.2
Central Total		1,192	17.1	-0.4
<i>Northeast</i>				
	8th	169	15.8	-1.7
	13th	36	10.7	-6.7
	17th	276	15.9	-1.5
	19th	196	11.7	-5.7
	20th	62	17.0	-0.5
Northeast Total		739	14.6	-2.8
<i>Southern</i>				
	3rd	19	22.2	4.8
	4th	427	21.1	3.7
	10th	101	6.0	-11.4
	11th	24	10.5	-7.0
	12th	12	14.4	-3.1
	15th	6	15.4	-2.1
	16th	9	12.4	-5.1
Southern Total		598	17.9	0.4
<i>Western</i>				
	6th	5	4.6	-12.8
	7th	20	7.1	-10.4
	9th	23	16.0	-1.5
	14th	7	25.5	8.1
	21st	117	10.5	-6.9
	22nd	8	13.5	-3.9
Western Total		180	11.4	-6.1
Statewide Total		2,719	17.5	-

January 2020 CDYC Supplemental Report

CYDC Reason Detained (RD) by Judicial District

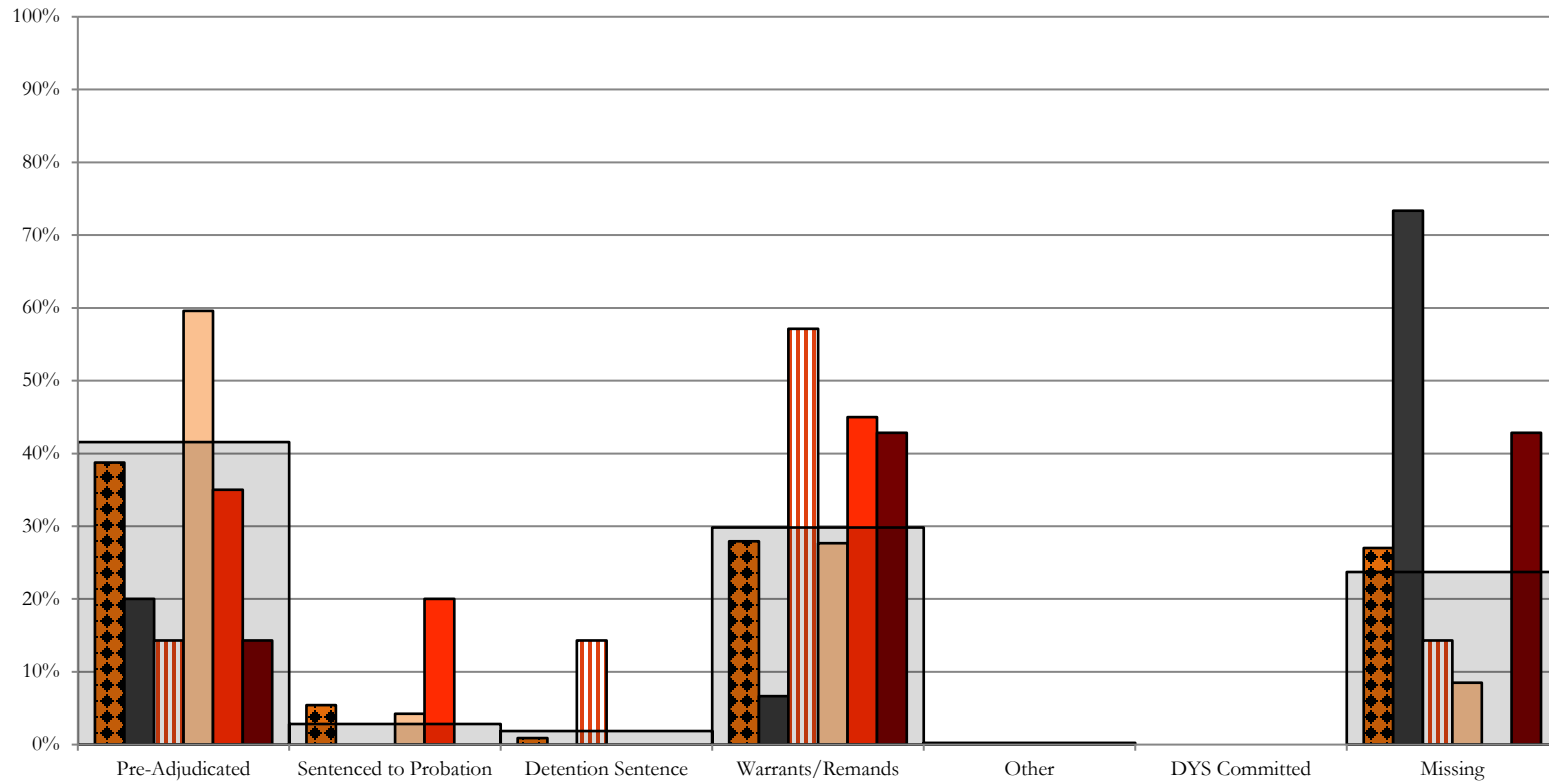
Region	JD	Monthly New Admits	Pre-Adjudicated				Sentenced to Probation				Detention Sentence								Warrants/Remands				Other						DYS Committed		Missing							
			Felony		Misdemeanor		Technical Violator		New Charges		Probation Sentence		Detention Sentence		Valid Court Order (VCO) Truancy		Awaiting DSS (Social Services) Placement		Failure to Appear (FTA)		Failure to Comply (FTC)		Interstate Compact on Juveniles (ICJ) Hold		Immigration Hold		No Bond Hold		Out-of-Country Warrant		Institutional		Parole		Missing			
			#	%	#	%	#	%	#	%	#	%	#	%	#	%	#	%	#	%	#	%	#	%	#	%	#	%	#	%	#	%	#	%				
Central																																						
	1st	34	5	14.7%	2	5.9%	3	8.8%	0	0.0%	0	0.0%	2	5.9%	0	0.0%	0	0.0%	2	5.9%	6	17.6%	0	0.0%	0	0.0%	0	0.0%	0	0.0%	0	0.0%	0	0.0%	0	0.0%	14	41.2%
	2nd	55	24	43.6%	6	10.9%	0	0.0%	0	0.0%	0	0.0%	1	1.8%	0	0.0%	0	0.0%	5	9.1%	15	27.3%	1	1.8%	0	0.0%	0	0.0%	0	0.0%	0	0.0%	0	0.0%	0	0.0%	3	5.5%
	5th	1	0	0.0%	0	0.0%	0	0.0%	0	0.0%	0	0.0%	1	100.0%	0	0.0%	0	0.0%	0	0.0%	0	0.0%	0	0.0%	0	0.0%	0	0.0%	0	0.0%	0	0.0%	0	0.0%	0	0.0%	0	0.0%
	18th	105	28	26.7%	11	10.5%	0	0.0%	0	0.0%	0	0.0%	1	1.0%	0	0.0%	0	0.0%	8	7.6%	20	19.0%	0	0.0%	0	0.0%	0	0.0%	0	0.0%	0	0.0%	0	0.0%	0	0.0%	37	35.2%
Central Total		195	57	29%	19	10%	3	1.5%	0	0.0%	0	0.0%	5	2.6%	0	0.0%	0	0.0%	15	8%	41	21%	1	0.5%	0	0.0%	0	0.0%	0	0.0%	0	0.0%	0	0.0%	0	0.0%	54	27.7%
Northeast																																						
	8th	30	5	16.7%	1	3.3%	0	0.0%	0	0.0%	0	0.0%	0	0.0%	0	0.0%	0	0.0%	2	6.7%	0	0.0%	0	0.0%	0	0.0%	0	0.0%	0	0.0%	0	0.0%	0	0.0%	0	0.0%	22	73.3%
	13th	7	0	0.0%	1	14.3%	0	0.0%	0	0.0%	0	0.0%	1	14.3%	0	0.0%	0	0.0%	1	14.3%	3	42.9%	0	0.0%	0	0.0%	0	0.0%	0	0.0%	0	0.0%	0	0.0%	0	0.0%	1	14.3%
	17th	47	19	40.4%	9	19.1%	1	2.1%	1	2.1%	0	0.0%	0	0.0%	0	0.0%	0	0.0%	4	8.5%	9	19.1%	0	0.0%	0	0.0%	0	0.0%	0	0.0%	0	0.0%	0	0.0%	4	8.5%		
	19th	20	5	25.0%	2	10.0%	4	20.0%	0	0.0%	0	0.0%	0	0.0%	0	0.0%	0	0.0%	1	5.0%	8	40.0%	0	0.0%	0	0.0%	0	0.0%	0	0.0%	0	0.0%	0	0.0%	0	0.0%	0	0.0%
	20th	7	1	14.3%	0	0.0%	0	0.0%	0	0.0%	0	0.0%	0	0.0%	0	0.0%	0	0.0%	0	0.0%	3	42.9%	0	0.0%	0	0.0%	0	0.0%	0	0.0%	0	0.0%	0	0.0%	0	0.0%	3	42.9%
Northeast Total		111	30	27%	13	12%	5	4.5%	1	0.9%	0	0.0%	1	0.9%	0	0.0%	0	0.0%	8	7.2%	23	21%	0	0.0%	0	0.0%	0	0.0%	0	0.0%	0	0.0%	0	0.0%	0	0.0%	30	27%
Southern																																						
	3rd	3	2	66.7%	0	0.0%	0	0.0%	0	0.0%	0	0.0%	0	0.0%	0	0.0%	0	0.0%	0	0.0%	0	0.0%	0	0.0%	0	0.0%	0	0.0%	0	0.0%	0	0.0%	0	0.0%	0	0.0%	1	33.3%
	4th	66	29	43.9%	7	10.6%	0	0.0%	0	0.0%	0	0.0%	0	0.0%	0	0.0%	0	0.0%	5	7.6%	15	22.7%	0	0.0%	0	0.0%	0	0.0%	0	0.0%	0	0.0%	0	0.0%	0	0.0%	10	15.2%
	10th	17	6	35.3%	1	5.9%	0	0.0%	0	0.0%	0	0.0%	1	5.9%	0	0.0%	0	0.0%	1	5.9%	8	47.1%	0	0.0%	0	0.0%	0	0.0%	0	0.0%	0	0.0%	0	0.0%	0	0.0%	0	0.0%
	11th	5	1	20.0%	0	0.0%	0	0.0%	0	0.0%	0	0.0%	1	20.0%	0	0.0%	0	0.0%	2	40.0%	1	20.0%	0	0.0%	0	0.0%	0	0.0%	0	0.0%	0	0.0%	0	0.0%	0	0.0%	0	0.0%
	12th	2	2	100.0%	0	0.0%	0	0.0%	0	0.0%	0	0.0%	0	0.0%	0	0.0%	0	0.0%	0	0.0%	0	0.0%	0	0.0%	0	0.0%	0	0.0%	0	0.0%	0	0.0%	0	0.0%	0	0.0%	0	0.0%
	15th	0	0	0.0%	0	0.0%	0	0.0%	0	0.0%	0	0.0%	0	0.0%	0	0.0%	0	0.0%	0	0.0%	0	0.0%	0	0.0%	0	0.0%	0	0.0%	0	0.0%	0	0.0%	0	0.0%	0	0.0%	0	0.0%
	16th	1	0	0.0%	0	0.0%	0	0.0%	0	0.0%	0	0.0%	0	0.0%	0	0.0%	0	0.0%	0	0.0%	0	0.0%	0	0.0%	0	0.0%	0	0.0%	0	0.0%	0	0.0%	0	0.0%	0	0.0%	1	100.0%
Southern Total		94	40	43%	8	9%	0	0.0%	0	0.0%	0	0.0%	2	2.1%	0	0.0%	0	0.0%	8	9%	24	26%	0	0.0%	0	0.0%	0	0.0%	0	0.0%	0	0.0%	0	0.0%	0	0.0%	12	13%
Western																																						
	6th	1	0	0.0%	0	0.0%	0	0.0%	0	0.0%	0	0.0%	0	0.0%	0	0.0%	0	0.0%	0	0.0%	0	0.0%	0	0.0%	0	0.0%	0	0.0%	0	0.0%	0	0.0%	0	0.0%	0	0.0%	1	100%
	7th	4	0	0.0%	2	50.0%	0	0.0%	2	50.0%	0	0.0%	0	0.0%	0	0.0%	0	0.0%	0	0.0%	0	0.0%	0	0.0%	0	0.0%	0	0.0%	0	0.0%	0	0.0%	0	0.0%	0	0.0%	0	0%
	9th	4	3	75.0%	0	0.0%	0	0.0%	0	0.0%	0	0.0%	0	0.0%	0	0.0%	0	0.0%	1	25.0%	0	0.0%	0	0.0%	0	0.0%	0	0.0%	0	0.0%	0	0.0%	0	0.0%	0	0.0%	0	0%
	14th	2	0	0.0%	0	0.0%	1	50.0%	0	0.0%	0	0.0%	0	0.0%	0	0.0%	0	0.0%	0	0.0%	0	0.0%	0	0.0%	0	0.0%	0	0.0%	0	0.0%	0	0.0%	0	0.0%	0	0.0%	1	50%
	21st	13	2	15.4%	3	23.1%	0	0.0%	0	0.0%	0	0.0%	0	0.0%	0	0.0%	0	0.0%	0	0.0%	5	38.5%	0	0.0%	0	0.0%	0	0.0%	0	0.0%	0	0.0%	0	0.0%	0	0.0%	3	23%
	22nd	2	0	0.0%	0	0.0%	0	0.0%	0	0.0%	0	0.0%	0	0.0%	0	0.0%	0	0.0%	0	0.0%	2	100.0%	0	0.0%	0	0.0%	0	0.0%	0	0.0%	0	0.0%	0	0.0%	0	0.0%	0	0%
Western Total		26	5	19%	5	19.2%	1	3.8%	2	7.7%	0	0.0%	0	0.0%	0	0.0%	0	0.0%	1	3.8%	7	27%	0	0.0%	0	0.0%	0	0.0%	0	0.0%	0	0.0%	0	0.0%	0	0.0%	5	19%
Individual RD Totals		426	132	31%	45	11%	9	2.1%	3	0.7%	0	0.0%	8	1.9%	0	0.0%	0	0.0%	32	8%	95	22%	1	0.2%	0	0.0%	0	0.0%	0	0.0%	0	0.0%	0	0.0%	0	0.0%	101	24%
Statewide Totals		426	177	41.5%	12	2.8%	8	1.9%	0	0.0%	0	0.0%	8	1.9%	0	0.0%	0	0.0%	127	29.8%	1	0.2%	0	0.0%	0	0.0%	0	0.0%	0	0.0%	0	0.0%	0	0.0%	101	24%		

Central Region CYDC Reason Detained by Judicial District January 2020 New Admits



- CENTRAL REGION, 195 New Admits
- 5th JD, 1 New Admits
- 18th JD, 105 New Admits
- 1st JD, 34 New Admits
- 2nd JD, 55 New Admits
- STATEWIDE, 426 New Admits

Northeast Region CYDC Reason Detained by Judicial District January 2020 New Admits



■ NORTHEAST REGION, 111 New Admits

■ 8th JD, 30 New Admits

■ 13th JD, 7 New Admits

■ 17th JD, 47 New Admits

■ 19th JD, 20 New Admits

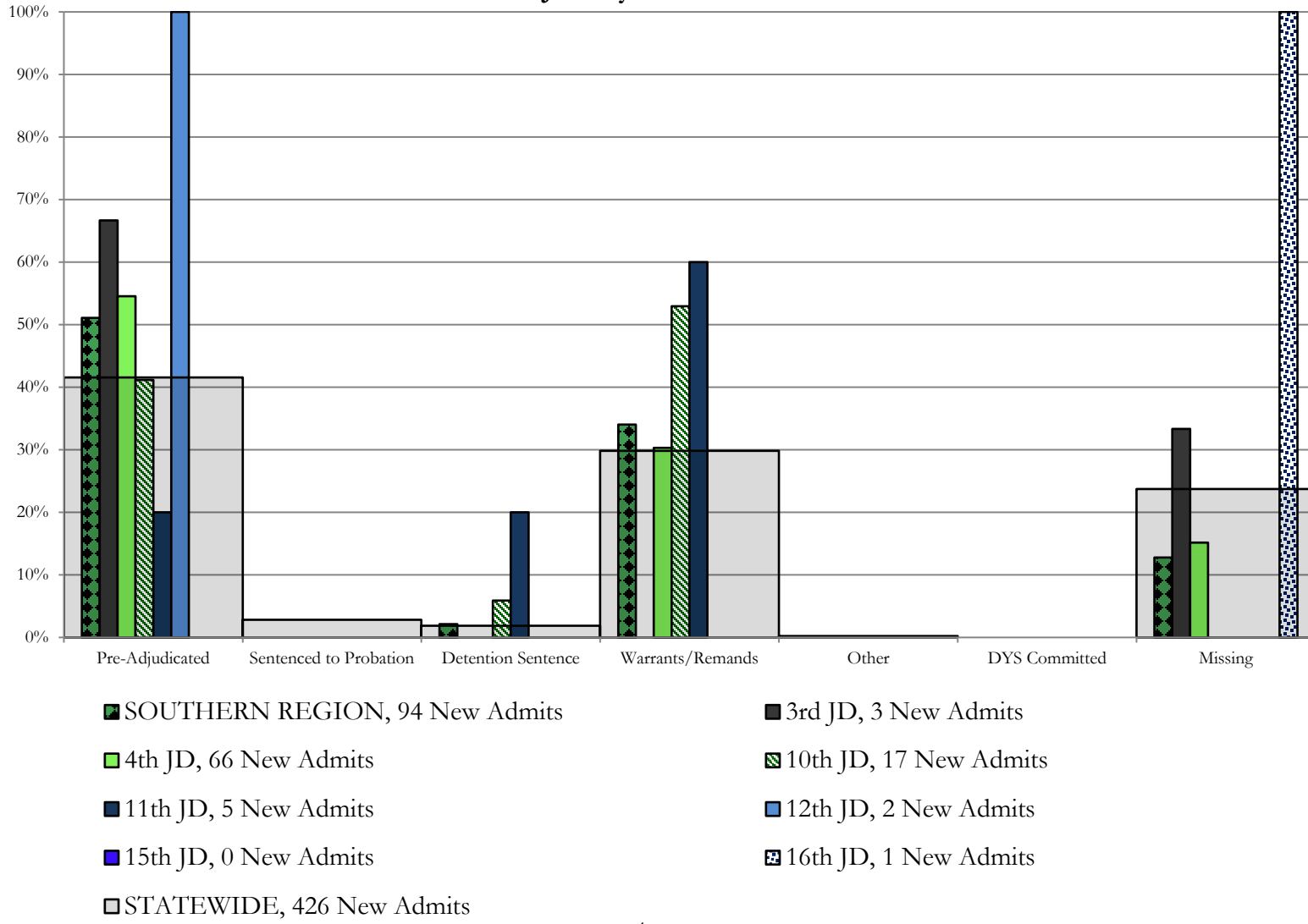
■ 20th JD, 7 New Admits

■ STATEWIDE, 426 New Admits

Southern Region

CYDC Reason Detained by Judicial District

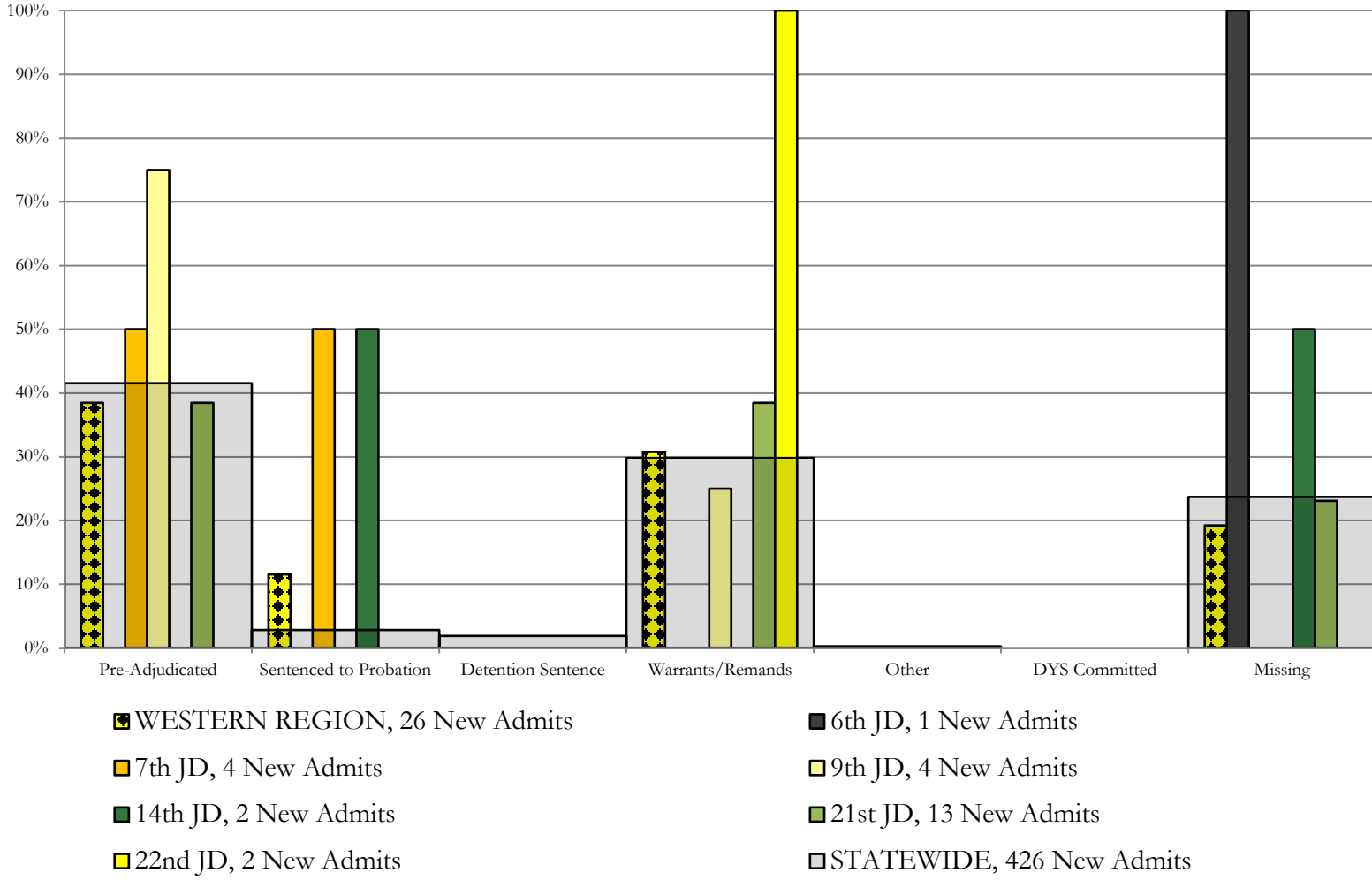
January 2020 New Admits



Western Region

CYDC Reason Detained by Judicial District

January 2020 New Admits



January 2020 CYDC Supplemental Report

DYS Detention Maximum Youth Served by Judicial District¹

Region	JD	Detention Capacity	Detention ADP		Maximum Youth Served on a Single Day ^{2,3}			
			January 2020	YTD	January 2020		YTD	
					Number of Youth	% of Detention Capacity	Number of Youth	% of Detention Capacity
<i>Central</i>								
	1st	35	17.1	17.7	24	68.6%	34	97.1%
	2nd	49	31.5	39.2	37	75.5%	52	106.1%
	5th	4	0.4	0.6	1	25.0%	2	50.0%
	18th	48	61.1	51.9	71	147.9%	71	147.9%
Central Region		136	110.1	109.4	122	89.7%	136	100.0%
<i>Northeast</i>								
	8th	14	11.6	13.4	16	114.3%	21	150.0%
	13th	5	4.9	3.0	8	160.0%	8	160.0%
	17th	28	22.5	23.1	28	100.0%	30	107.1%
	19th	18	14.3	11.1	17	94.4%	20	111.1%
	20th	8	2.9	4.8	6	75.0%	8	100.0%
Northeast Region		73	56.3	55.4	63	86.3%	68	93.2%
<i>Southern</i>								
	3rd	2	1.1	2.8	3	150.0%	8	400.0%
	4th	54	43.4	46.8	47	87.0%	61	113.0%
	10th	14	7.8	4.6	11	78.6%	11	78.6%
	11th	3	2.7	1.3	4	133.3%	5	166.7%
	12th	4	2.1	1.8	4	100.0%	5	125.0%
	15th	2	3.7	1.2	5	250.0%	5	250.0%
	16th	3	0.3	0.6	1	33.3%	3	100.0%
Southern Region		82	61.0	59.1	67	81.7%	73	89.0%
<i>Western</i>								
	6th	5	0.0	0.1	1	20.0%	1	20.0%
	7th	5	0.6	0.7	3	60.0%	4	80.0%
	9th	3	0.7	1.1	3	100.0%	4	133.3%
	14th	3	1.6	1.1	2	66.7%	3	100.0%
	21st	16	11.2	11.2	14	87.5%	20	125.0%
	22nd	4	0.3	0.7	2	50.0%	5	125.0%
Western Region		36	14.4	14.9	19	52.8%	24	66.7%
<i>Missing JD or Multiple JDs</i>			1.1	1.0				
Statewide		327	242.9	239.9	261	79.8%	284	86.9%

¹ Maximum youth served is the highest number of youth in detention on a single day during the month or fiscal year.

² Regional figures are not the sum of judicial districts, but represent the maximum count on one day for the entire region.

³ State figures are not the sum of regional figures, but represent the maximum count on one day for the entire state.

January 2020 CYDC Supplemental Report

CYDC Community ADP by Judicial District

Region	JD	Committed		Diversion		ICJ		Municipal		Pre-Adjudicated		Sentenced		VCO		Total	
		January 2020	YTD	January 2020	YTD	January 2020	YTD	January 2020	YTD	January 2020	YTD	January 2020	YTD	January 2020	YTD	January 2020	YTD
<i>Central</i>																	
	1st	2.0	2.3	0.1	3.1	0.0	0.0	40.3	37.3	205.2	183.5	36.5	38.8	0.0	0.0	284.2	265.0
	2nd	3.5	3.1	1.0	0.8	0.7	0.3	0.0	0.0	173.2	144.2	53.3	42.7	0.0	0.0	231.7	191.1
	5th	0.0	0.0	12.0	13.2	0.0	0.0	0.0	0.0	13.1	12.1	28.6	36.4	0.0	0.0	53.6	61.7
	18th	1.0	2.4	1.0	0.5	0.0	0.1	1.0	1.0	344.0	294.8	38.7	33.7	0.0	0.0	385.7	332.7
Central Total		6.5	7.9	14.1	17.6	0.7	0.4	41.3	38.3	735.4	634.7	157.1	151.7	0.0	0.0	955.2	850.4
<i>Northeast</i>																	
	8th	0.0	0.0	11.0	13.4	0.0	0.0	0.0	0.0	105.5	92.0	92.8	76.5	0.0	0.0	209.3	181.9
	13th	0.0	0.0	0.0	0.0	0.0	0.0	0.0	0.0	12.7	15.4	6.5	2.8	0.0	0.7	19.2	18.9
	17th	1.0	0.6	1.0	0.8	0.0	0.0	0.0	0.0	338.1	302.3	87.3	84.6	0.0	0.6	427.4	388.9
	19th	0.2	0.2	0.0	0.0	0.2	0.0	0.0	1.5	74.4	76.4	25.5	29.9	0.0	0.3	100.3	108.4
	20th	0.0	0.2	71.0	70.6	1.0	1.0	1.0	1.0	135.5	114.3	12.8	12.3	2.0	2.0	223.3	201.4
Northeast Total		1.2	1.0	83.0	84.8	1.2	1.0	1.0	2.6	666.2	600.4	225.0	206.1	2.0	3.6	979.5	899.4
<i>Southern</i>																	
	3rd	0.0	0.0	0.0	0.0	0.0	0.0	0.0	0.0	25.0	20.4	5.0	3.9	0.0	0.0	30.0	24.3
	4th	0.0	0.8	0.0	0.0	0.0	0.0	63.0	42.4	151.6	137.1	37.5	41.7	0.0	0.0	252.2	222.0
	10th	0.0	0.0	0.0	0.0	0.0	0.0	1.0	1.0	23.1	15.9	3.5	2.6	0.9	0.3	28.5	19.8
	11th	0.0	0.0	0.0	0.0	0.0	0.0	5.0	3.5	13.8	10.9	10.0	10.4	0.0	0.0	28.8	24.8
	12th	0.0	0.0	2.0	2.9	0.0	0.0	1.0	1.2	7.9	6.7	1.1	1.5	0.0	0.0	12.0	12.3
	15th	0.0	0.0	3.0	3.3	0.0	0.0	0.0	0.0	3.0	2.9	8.0	7.5	0.0	0.0	14.0	13.7
	16th	0.0	0.0	0.0	0.0	0.0	0.0	0.0	0.0	4.3	4.4	1.0	0.2	13.0	16.1	18.3	20.7
Southern Total		0.0	0.8	5.0	6.2	0.0	0.0	70.0	48.1	228.8	198.3	66.0	67.8	13.9	16.4	383.8	337.6
<i>Western</i>																	
	6th	0.0	0.0	0.0	0.0	0.0	0.0	1.0	0.6	5.8	4.2	0.0	0.0	0.0	0.0	6.8	4.8
	7th	0.0	0.0	17.0	14.3	0.0	0.0	2.0	1.0	12.2	9.8	5.3	3.9	0.0	0.0	36.5	28.9
	9th	0.0	0.0	4.0	2.2	0.0	0.0	5.4	2.2	13.4	11.0	2.0	1.1	0.0	0.0	24.8	16.6
	14th	0.0	0.0	9.0	9.7	0.0	0.0	0.0	0.0	6.0	5.3	1.7	0.3	0.0	0.0	16.7	15.3
	21st	0.0	0.0	0.0	0.0	0.0	0.0	0.0	0.0	74.9	73.0	27.0	24.6	0.0	0.0	101.9	97.6
	22nd	0.0	0.0	0.0	0.0	0.0	0.0	0.0	0.0	6.0	3.5	8.7	11.9	0.0	0.0	14.7	15.4
Western Total		0.0	0.0	30.0	26.1	0.0	0.0	8.4	3.8	118.3	106.7	44.7	41.9	0.0	0.0	201.4	178.6
Statewide Total		7.7	9.6	132.1	134.7	2.0	1.5	120.7	92.7	1,748.8	1,540.1	492.8	467.4	15.9	20.0	2,520.0	2,266.1