

December 2019 FY 2019-2020 CYDC JDSAG SUPPLEMENTAL REPORT

Prepared by the Division of Youth Services (DYS)

Data Management & Analysis

January 25, 2020



COLORADO

Division of Youth Services

Office of Children, Youth & Families

December 2019 CYDC Supplemental Report

DYS Commitment ADP & New Commitments by Judicial District

Region	JD ¹	2020 Population Estimates ²	ADP ³		New Commitments		
			December 2019	YTD	December 2019	YTD	YTD Rate ⁴
<i>Central</i>							
	1st	54,722	65.9	75.7	3	8	1.5
	2nd	57,309	75.4	73.4	4	21	3.7
	5th	9,320	4.0	4.2	0	0	0.0
	18th	115,605	69.2	76.4	1	14	1.2
Central Total		236,956	214.5	229.6	8	43	1.8
<i>Northeast</i>							
	8th	34,597	19.4	19.1	1	5	1.4
	13th	8,496	3.0	2.8	0	1	1.2
	17th	69,940	42.4	46.1	4	12	1.7
	19th	38,548	38.4	38.6	0	11	2.9
	20th	31,121	4.0	3.9	0	1	0.3
Northeast Total		182,702	107.2	110.5	5	30	1.6
<i>Southern</i>							
	3rd	1,817	3.0	3.0	0	0	0.0
	4th	83,065	65.8	69.0	2	16	1.9
	10th	18,110	9.0	10.7	0	2	1.1
	11th	7,264	3.0	2.9	0	2	2.8
	12th	5,399	4.9	4.9	0	3	5.6
	15th	2,125	3.0	3.0	0	0	0.0
	16th	2,762	2.9	1.8	1	1	3.6
Southern Total		120,542	91.6	95.4	3	24	2.0
<i>Western</i>							
	6th	7,285	0.0	2.5	0	0	0.0
	7th	10,595	7.9	7.1	0	4	3.8
	9th	8,578	3.0	4.5	0	0	0.0
	14th	5,752	0.0	0.0	0	0	0.0
	21st	16,322	32.8	35.7	1	9	5.5
	22nd	3,063	8.0	6.9	0	5	16.3
Western Total		51,595	51.7	56.8	1	18	3.5
Statewide Total		591,795	464.9	492.3	17	115	1.9

¹ JD represents the judicial district in which the client was committed. Regional totals are a sum of their respective judicial districts. Regional totals reported here may differ slightly from those reported in the Monthly Population Report, where region is defined by active caseloads.

² Source: DOLA 2020 Estimates.

³ Due to rounding, totals shown may not be an exact sum of the subtotals.

⁴ Per 10,000 youth in the population.

December 2019 CYDC Supplemental Report

DYS Detention ADP and New Detention Admissions by Judicial District

Region	JD	2020 Population Estimates ¹	ADP		New Admits		
			December 2019	YTD	December 2019	YTD	YTD New Admit Rate ²
<i>Central</i>							
	1st	54,722	13.8	17.8	26	200	36.5
	2nd	57,309	37.7	40.5	53	362	63.2
	5th	9,320	0.6	0.6	1	6	6.4
	18th	115,605	50.6	50.3	74	445	38.5
Central Total		236,956	102.7	109.2	154	1,013	42.8
<i>Northeast</i>							
	8th	34,597	16.1	13.7	23	143	41.3
	13th	8,496	3.3	2.7	3	31	36.5
	17th	69,940	19.1	23.3	31	223	31.9
	19th	38,548	12.4	10.6	38	178	46.2
	20th	31,121	5.0	5.2	11	52	16.7
Northeast Total		182,702	55.8	55.4	106	627	34.3
<i>Southern</i>							
	3rd	1,817	2.8	3.1	0	11	60.5
	4th	83,065	39.4	47.3	47	371	44.7
	10th	18,110	4.6	4.1	10	87	48.0
	11th	7,264	0.2	1.1	2	20	27.5
	12th	5,399	2.1	1.8	0	13	24.1
	15th	2,125	3.8	0.8	5	9	42.4
	16th	2,762	0.1	0.7	1	9	32.6
Southern Total		120,542	53.1	58.8	65	520	43.1
<i>Western</i>							
	6th	7,285	0.1	0.1	1	4	5.5
	7th	10,595	0.2	0.7	1	13	12.3
	9th	8,578	1.0	1.2	4	15	17.5
	14th	5,752	0.8	1.0	2	7	12.2
	21st	16,322	15.7	11.1	12	115	70.5
	22nd	3,063	0.0	0.8	0	7	22.9
Western Total		51,595	17.8	15.0	20	161	31.2
<i>Missing JD or Multiple JDs</i>			<i>1.2</i>	<i>1.0</i>			
Statewide Total		591,795	230.6	239.4	345	2,321	39.2

¹ Source: DOLA 2020 Estimates.

² Per 10,000 youth in the population.

December 2019 CYDC Supplemental Report

DYS Detention LOS by Judicial District				
Region	JD	YTD Detention Releases	YTD LOS (days)	LOS (days) Compared to State AVG
<i>Central</i>				
	1st	198	14.5	-2.4
	2nd	365	15.2	-1.7
	5th	7	15.8	-1.1
	18th	431	18.2	1.3
Central Total		1,001	16.3	-0.6
<i>Northeast</i>				
	8th	141	16.4	-0.5
	13th	32	9.7	-7.2
	17th	231	14.9	-2.0
	19th	170	11.6	-5.3
	20th	55	17.5	0.6
Northeast Total		629	14.3	-2.6
<i>Southern</i>				
	3rd	18	23.5	6.6
	4th	368	20.2	3.3
	10th	85	6.0	-10.9
	11th	21	11.3	-5.6
	12th	12	14.4	-2.5
	15th	4	6.3	-10.6
	16th	9	12.4	-4.5
Southern Total		517	17.2	0.3
<i>Western</i>				
	6th	5	4.6	-12.3
	7th	16	8.0	-8.9
	9th	18	19.2	2.3
	14th	7	25.6	8.7
	21st	100	8.8	-8.0
	22nd	6	17.1	0.2
Western Total		152	10.9	-6.0
Statewide Total		2,304	16.9	-

December 2019 CYDC Supplemental Report

YTD DYS Detention ADP & Ethnicity by Judicial District

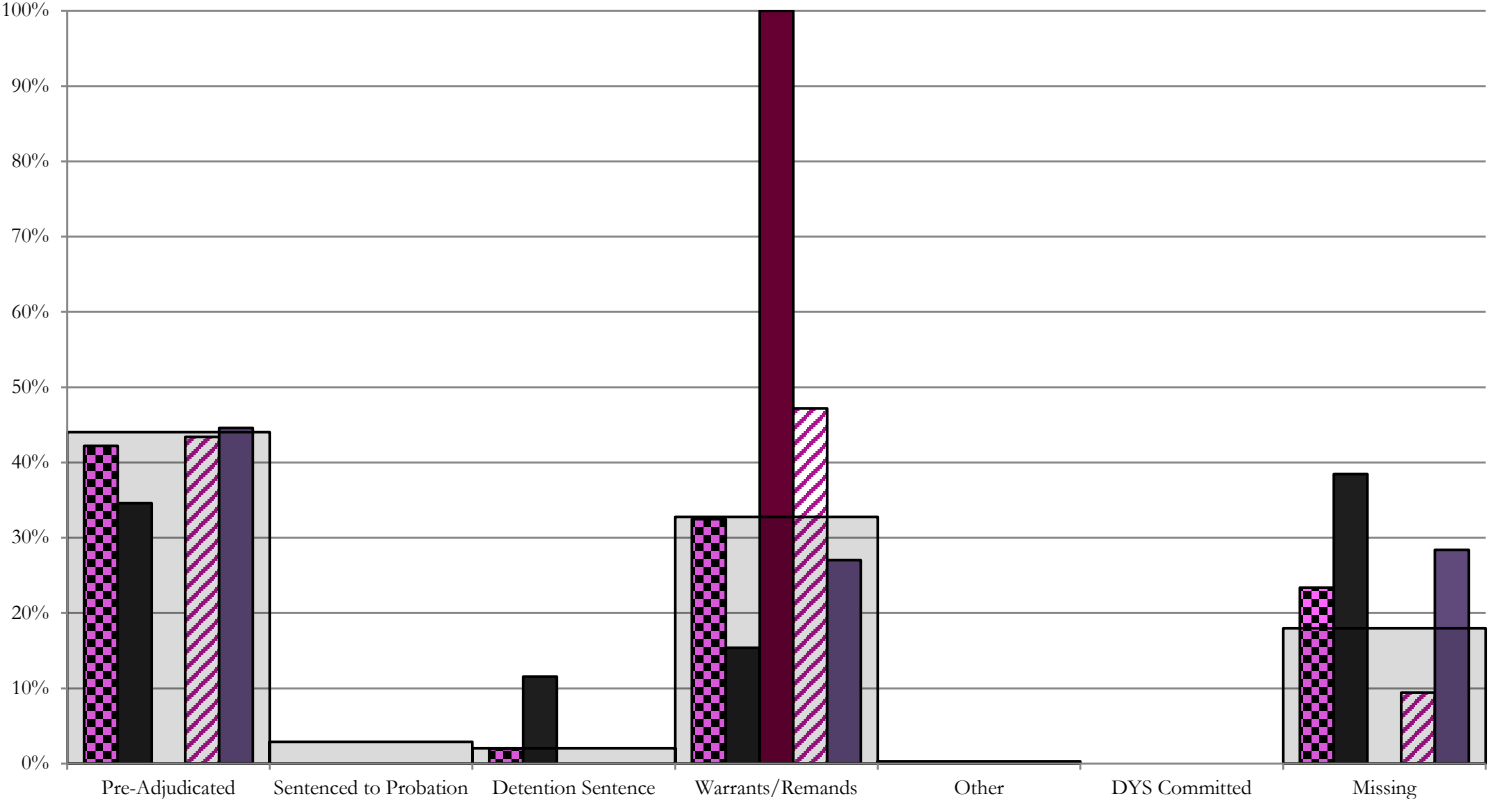
Region	JD	Anglo-American		African-American		Hispanic / Latino		Native-American		Asian-American		Other		TOTAL	
		ADP	%	ADP	%	ADP	%	ADP	%	ADP	%	ADP	%	ADP	%
Central															
	1st	9.5	53.5%	4.3	24.2%	3.4	19.3%	0.1	0.8%	0.3	1.6%	0.1	0.6%	17.8	100%
	2nd	3.5	8.8%	13.2	32.7%	19.2	47.4%	0.6	1.5%	3.9	9.6%	0.0	0.1%	40.5	100%
	5th	0.1	8.3%	0.0	0.0%	0.6	91.7%	0.0	0.0%	0.0	0.0%	0.0	0.0%	0.6	100%
	18th	13.3	26.4%	15.9	31.6%	18.7	37.2%	1.3	2.5%	0.8	1.5%	0.4	0.8%	50.3	100%
Central Total		26.4	24.2%	33.4	22.1%	41.9	48.9%	2.0	1.2%	5.0	3.2%	0.5	0.4%	109.2	100%
Northeast															
	8th	7.6	55.9%	0.3	2.6%	5.6	41.2%	0.0	0.3%	0.0	0.0%	0.0	0.0%	13.7	100%
	13th	0.4	14.7%	0.0	0.0%	2.2	83.4%	0.0	0.0%	0.0	1.3%	0.0	0.5%	2.7	100%
	17th	2.4	10.2%	3.8	16.2%	16.5	70.7%	0.0	0.1%	0.5	2.3%	0.1	0.4%	23.3	100%
	19th	3.2	30.5%	0.2	2.2%	6.9	65.6%	0.0	0.4%	0.1	1.1%	0.0	0.2%	10.6	100%
	20th	3.2	62.4%	0.6	10.9%	1.2	23.3%	0.0	0.0%	0.0	0.0%	0.2	3.5%	5.2	100%
Northeast Total		16.9	34.7%	4.9	6.4%	32.5	56.8%	0.1	0.2%	0.7	0.9%	0.3	0.9%	55.4	100%
Southern															
	3rd	1.5	49.3%	0.0	0.0%	1.5	49.7%	0.0	1.1%	0.0	0.0%	0.0	0.0%	3.1	100%
	4th	15.2	32.0%	12.1	25.5%	18.7	39.6%	0.8	1.6%	0.5	1.1%	0.1	0.1%	47.3	100%
	10th	1.3	30.8%	0.0	1.0%	2.8	68.1%	0.0	0.0%	0.0	0.0%	0.0	0.0%	4.1	100%
	11th	0.8	74.3%	0.2	19.2%	0.1	6.5%	0.0	0.0%	0.0	0.0%	0.0	0.0%	1.1	100%
	12th	0.1	6.3%	0.1	6.1%	0.8	45.0%	0.0	0.0%	0.0	0.0%	0.8	42.6%	1.8	100%
	15th	0.5	67.5%	0.0	0.0%	0.3	32.5%	0.0	0.0%	0.0	0.0%	0.0	0.0%	0.8	100%
	16th	0.0	2.9%	0.0	0.0%	0.6	97.1%	0.0	0.0%	0.0	0.0%	0.0	0.0%	0.7	100%
Southern Total		19.4	37.6%	12.4	7.4%	24.8	48.4%	0.8	0.4%	0.5	0.2%	0.8	6.1%	58.8	100%
Western															
	6th	0.1	51.3%	0.0	0.0%	0.0	16.5%	0.0	20.5%	0.0	0.0%	0.0	11.6%	0.1	100%
	7th	0.7	89.9%	0.0	0.0%	0.1	10.1%	0.0	0.0%	0.0	0.0%	0.0	0.0%	0.7	100%
	9th	0.6	47.3%	0.3	25.2%	0.3	27.5%	0.0	0.0%	0.0	0.0%	0.0	0.0%	1.2	100%
	14th	0.5	45.6%	0.5	52.8%	0.0	1.5%	0.0	0.0%	0.0	0.0%	0.0	0.0%	1.0	100%
	21st	9.3	83.5%	0.8	7.1%	1.0	9.2%	0.0	0.2%	0.0	0.0%	0.0	0.0%	11.1	100%
	22nd	0.5	71.3%	0.0	0.0%	0.0	0.0%	0.2	28.7%	0.0	0.0%	0.0	0.0%	0.8	100%
Western Total		11.6	64.8%	1.6	14.2%	1.5	10.8%	0.3	8.2%	0.0	0.0%	0.0	1.9%	15.0	100%
Missing JD Data		0.0		0.1		0.8		0.0		0.0		0.0		1.0	
Statewide Total		74.3	31.0%	52.5	21.9%	101.5	42.4%	3.2	1.3%	6.2	2.6%	1.7	0.7%	239.4	100%

December 2019 CDYC Supplemental Report

CYDC Reason Detained (RD) by Judicial District

Region	JD	Monthly New Admits	Pre-Adjudicated				Sentenced to Probation				Detention Sentence								Warrants/Remands				Other						DYS Committed		Missing					
			Felony		Misdemeanor		Technical Violator		New Charges		Probation Sentence		Detention Sentence		Valid Court Order (VCO) Truancy		Awaiting DSS (Social Services) Placement		Failure to Appear (FTA)		Failure to Comply (FTC)		Interstate Compact on Juveniles (ICJ) Hold		Immigration Hold		No Bond Hold		Out-of-Country Warrant		Institutional		Parole		Missing	
			#	%	#	%	#	%	#	%	#	%	#	%	#	%	#	%	#	%	#	%	#	%	#	%	#	%	#	%	#	%	#	%		
Central																																				
	1st	26	5	19.2%	4	15.4%	0	0.0%	0	0.0%	0	0.0%	3	11.5%	0	0.0%	0	0.0%	1	3.8%	3	11.5%	0	0.0%	0	0.0%	0	0.0%	0	0.0%	0	0.0%	0	0.0%	10	38.5%
	2nd	53	18	34.0%	5	9.4%	0	0.0%	0	0.0%	0	0.0%	0	0.0%	0	0.0%	0	0.0%	10	18.9%	15	28.3%	0	0.0%	0	0.0%	0	0.0%	0	0.0%	0	0.0%	0	0.0%	5	9.4%
	5th	1	0	0.0%	0	0.0%	0	0.0%	0	0.0%	0	0.0%	0	0.0%	0	0.0%	0	0.0%	0	0.0%	1	100.0%	0	0.0%	0	0.0%	0	0.0%	0	0.0%	0	0.0%	0	0.0%	0	0.0%
	18th	74	20	27.0%	13	17.6%	0	0.0%	0	0.0%	0	0.0%	0	0.0%	0	0.0%	0	0.0%	5	6.8%	15	20.3%	0	0.0%	0	0.0%	0	0.0%	0	0.0%	0	0.0%	21	28.4%		
Central Total		154	43	28%	22	14%	0	0.0%	0	0.0%	0	0.0%	3	1.9%	0	0.0%	0	0.0%	16	10%	34	22%	0	0.0%	0	0.0%	0	0.0%	0	0.0%	0	0.0%	0	0.0%	36	23.4%
Northeast																																				
	8th	23	1	4.3%	3	13.0%	0	0.0%	0	0.0%	0	0.0%	0	0.0%	0	0.0%	0	0.0%	1	4.3%	10	43.5%	0	0.0%	0	0.0%	0	0.0%	0	0.0%	0	0.0%	0	0.0%	8	34.8%
	13th	3	0	0.0%	1	33.3%	0	0.0%	0	0.0%	0	0.0%	0	0.0%	0	0.0%	0	0.0%	1	33.3%	0	0.0%	0	0.0%	0	0.0%	0	0.0%	0	0.0%	0	0.0%	0	0.0%	1	33.3%
	17th	31	8	25.8%	6	19.4%	0	0.0%	0	0.0%	0	0.0%	0	0.0%	0	0.0%	0	0.0%	2	6.5%	7	22.6%	1	3.2%	0	0.0%	0	0.0%	0	0.0%	0	0.0%	0	0.0%	7	22.6%
	19th	38	14	36.8%	7	18.4%	0	0.0%	0	0.0%	0	0.0%	1	2.6%	0	0.0%	0	0.0%	1	2.6%	8	21.1%	0	0.0%	0	0.0%	0	0.0%	0	0.0%	0	0.0%	0	0.0%	0	0.0%
	20th	11	2	18.2%	1	9.1%	3	27.3%	0	0.0%	0	0.0%	0	0.0%	0	0.0%	0	0.0%	0	0.0%	3	27.3%	0	0.0%	0	0.0%	0	0.0%	0	0.0%	0	0.0%	2	18.2%		
Northeast Total		106	25	24%	18	17%	10	9.4%	0	0.0%	0	0.0%	1	0.9%	0	0.0%	0	0.0%	5	4.7%	28	26%	1	0.9%	0	0.0%	0	0.0%	0	0.0%	0	0.0%	0	0.0%	18	17%
Southern																																				
	3rd	0	0	0.0%	0	0.0%	0	0.0%	0	0.0%	0	0.0%	0	0.0%	0	0.0%	0	0.0%	0	0.0%	0	0.0%	0	0.0%	0	0.0%	0	0.0%	0	0.0%	0	0.0%	0	0.0%	0	0.0%
	4th	47	29	61.7%	3	6.4%	0	0.0%	0	0.0%	0	0.0%	0	0.0%	0	0.0%	0	0.0%	4	8.5%	8	17.0%	0	0.0%	0	0.0%	0	0.0%	0	0.0%	0	0.0%	0	0.0%	3	6.4%
	10th	10	1	10.0%	2	20.0%	0	0.0%	0	0.0%	0	0.0%	0	0.0%	1	10.0%	0	0.0%	1	10.0%	4	40.0%	0	0.0%	0	0.0%	0	0.0%	0	0.0%	0	0.0%	0	0.0%	1	10.0%
	11th	2	0	0.0%	1	50.0%	0	0.0%	0	0.0%	0	0.0%	0	0.0%	0	0.0%	0	0.0%	0	0.0%	0	0.0%	0	0.0%	0	0.0%	0	0.0%	0	0.0%	0	0.0%	0	0.0%	1	50.0%
	12th	0	0	0.0%	0	0.0%	0	0.0%	0	0.0%	0	0.0%	0	0.0%	0	0.0%	0	0.0%	0	0.0%	0	0.0%	0	0.0%	0	0.0%	0	0.0%	0	0.0%	0	0.0%	0	0.0%	0	0.0%
	15th	5	2	40.0%	0	0.0%	0	0.0%	0	0.0%	0	0.0%	1	20.0%	0	0.0%	0	0.0%	0	0.0%	1	20.0%	0	0.0%	0	0.0%	0	0.0%	0	0.0%	0	0.0%	0	0.0%	1	20.0%
	16th	1	0	0.0%	0	0.0%	0	0.0%	0	0.0%	0	0.0%	0	0.0%	0	0.0%	0	0.0%	0	0.0%	0	0.0%	0	0.0%	0	0.0%	0	0.0%	0	0.0%	0	0.0%	0	0.0%	1	100.0%
Southern Total		65	32	49%	6	9%	0	0.0%	0	0.0%	0	0.0%	1	1.5%	1	1.5%	0	0.0%	5	8%	13	20%	0	0.0%	0	0.0%	0	0.0%	0	0.0%	0	0.0%	0	0.0%	7	11%
Western																																				
	6th	1	1	100.0%	0	0.0%	0	0.0%	0	0.0%	0	0.0%	0	0.0%	0	0.0%	0	0.0%	0	0.0%	0	0.0%	0	0.0%	0	0.0%	0	0.0%	0	0.0%	0	0.0%	0	0.0%	0	0%
	7th	1	0	0.0%	0	0.0%	0	0.0%	0	0.0%	0	0.0%	1	100.0%	0	0.0%	0	0.0%	0	0.0%	0	0.0%	0	0.0%	0	0.0%	0	0.0%	0	0.0%	0	0.0%	0	0.0%	0	0%
	9th	4	2	50.0%	0	0.0%	0	0.0%	0	0.0%	0	0.0%	0	0.0%	0	0.0%	0	0.0%	0	0.0%	1	25.0%	0	0.0%	0	0.0%	0	0.0%	0	0.0%	0	0.0%	0	0.0%	1	25%
	14th	2	0	0.0%	0	0.0%	0	0.0%	0	0.0%	0	0.0%	0	0.0%	0	0.0%	0	0.0%	0	0.0%	2	100.0%	0	0.0%	0	0.0%	0	0.0%	0	0.0%	0	0.0%	0	0.0%	0	0%
	21st	12	2	16.7%	1	8.3%	0	0.0%	0	0.0%	0	0.0%	0	0.0%	0	0.0%	0	0.0%	1	8.3%	8	66.7%	0	0.0%	0	0.0%	0	0.0%	0	0.0%	0	0.0%	0	0.0%	0	0%
	22nd	0	0	0.0%	0	0.0%	0	0.0%	0	0.0%	0	0.0%	0	0.0%	0	0.0%	0	0.0%	0	0.0%	0	0.0%	0	0.0%	0	0.0%	0	0.0%	0	0.0%	0	0.0%	0	0.0%	0	0%
Western Total		20	5	25%	1	5.0%	0	0.0%	0	0.0%	0	0.0%	1	5.0%	0	0.0%	0	0.0%	1	5.0%	11	55%	0	0.0%	0	0.0%	0	0.0%	0	0.0%	0	0.0%	0	0.0%	1	5%
Individual RD Totals		345	105	30%	47	14%	10	2.9%	0	0.0%	0	0.0%	6	1.7%	1	0.3%	0	0.0%	27	8%	86	25%	1	0.3%	0	0.0%	0	0.0%	0	0.0%	0	0.0%	0	0.0%	62	18%
Statewide Totals		345	152	44.1%	10	2.9%	0	0.0%	0	0.0%	7	2.0%	1	0.3%	0	0.0%	113	32.8%	1	0.3%	1	0.3%	0	0.0%	0	0.0%	0	0.0%	0	0.0%	0	0.0%	62	18%		

Central Region CYDC Reason Detained by Judicial District December 2019 New Admits



■ CENTRAL REGION, 154 New Admits

■ 1st JD, 26 New Admits

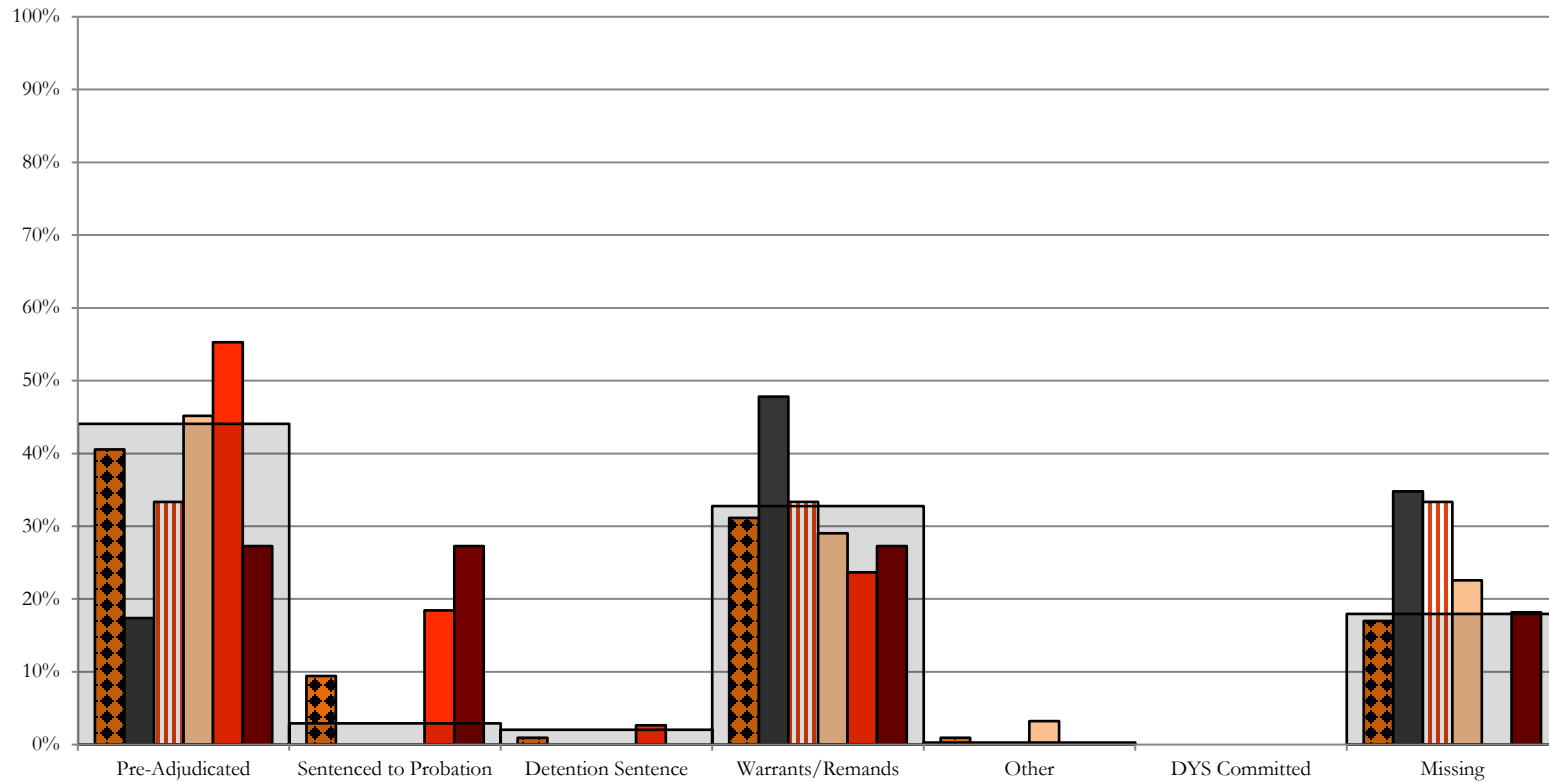
■ 5th JD, 1 New Admits

■ 2nd JD, 53 New Admits

■ 18th JD, 74 New Admits

■ STATEWIDE, 345 New Admits

Northeast Region CYDC Reason Detained by Judicial District December 2019 New Admits



■ NORTHEAST REGION, 106 New Admits

■ 8th JD, 23 New Admits

■ 13th JD, 3 New Admits

■ 17th JD, 31 New Admits

■ 19th JD, 38 New Admits

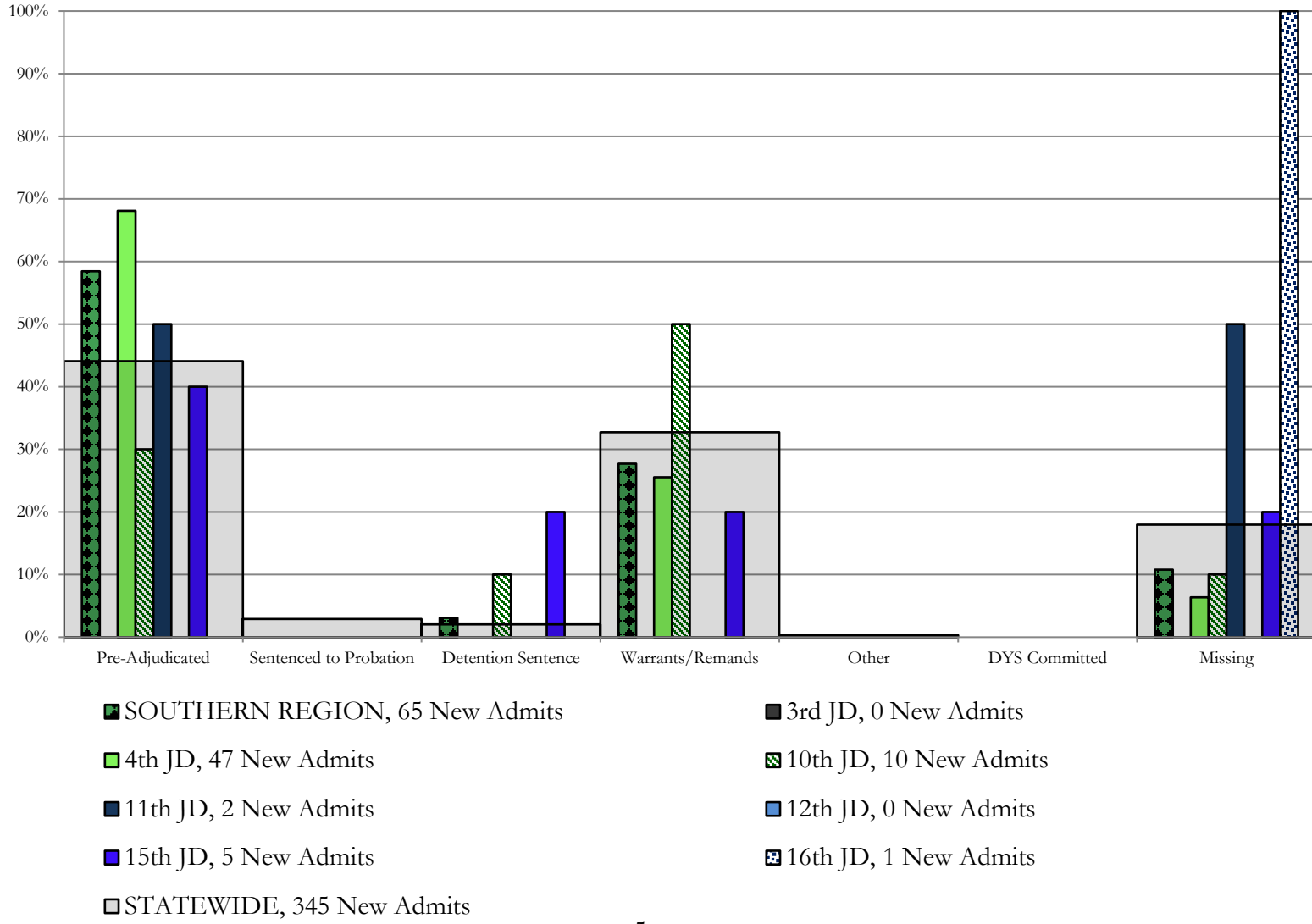
■ 20th JD, 11 New Admits

■ STATEWIDE, 345 New Admits

Southern Region

CYDC Reason Detained by Judicial District

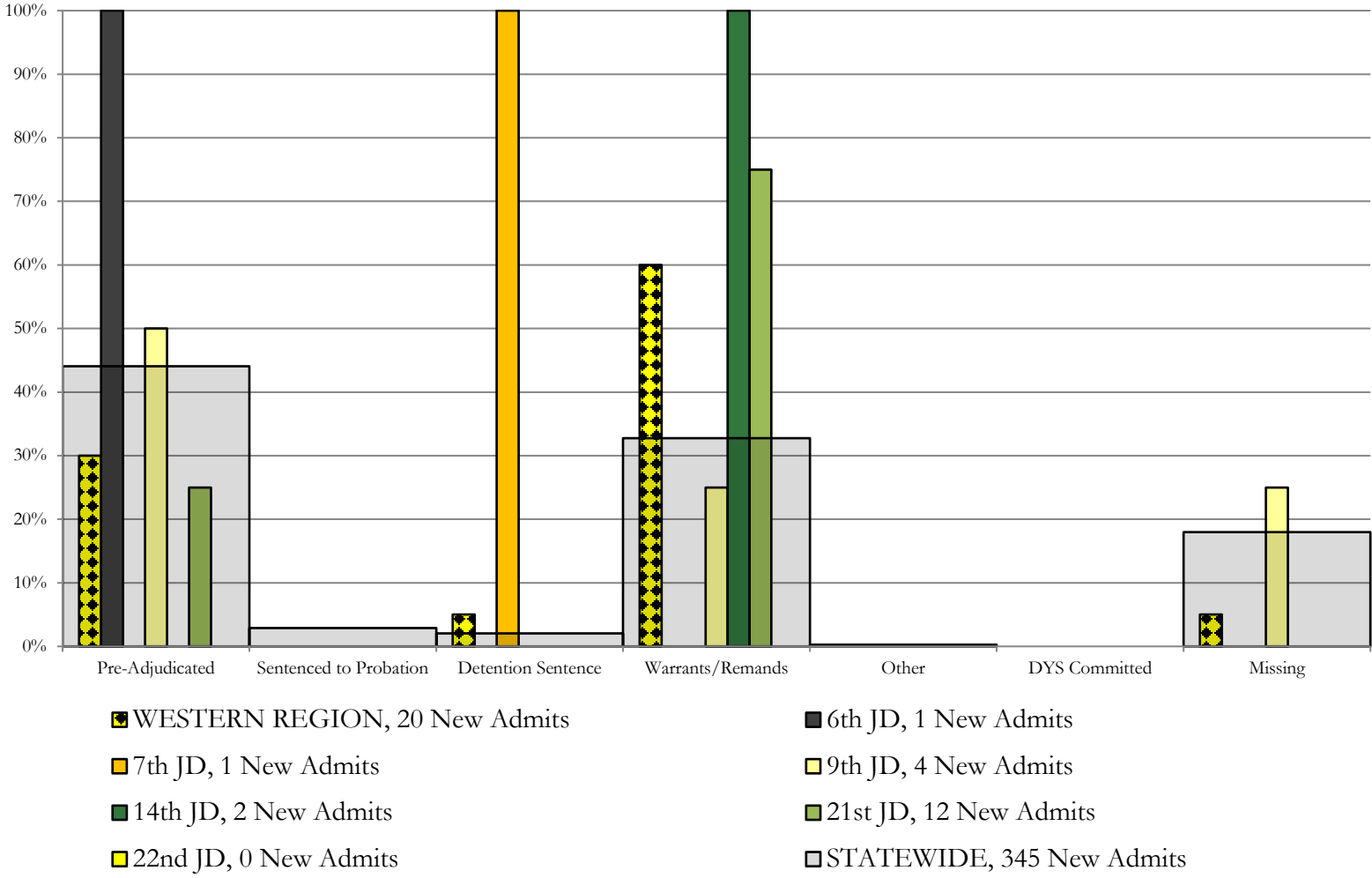
December 2019 New Admits



Western Region

CYDC Reason Detained by Judicial District

December 2019 New Admits



December 2019 CYDC Supplemental Report

CYDC Reason Detained (RD) by Judicial District Year to Date

Region	JD	Year to Date New Admits	Pre-Adjudicated				Sentenced to Probation				Detention Sentence								Warrants/Remands				Other				DYS Committed				Missing				
			Felony		Misdemeanor		Technical Violator		New Charges		Probation Sentence		Detention Sentence		Valid Court Order (VCO) Truancy		Awaiting DSS (Social Services) Placement		Failure to Appear (FTA)		Failure to Comply (FTC)		Interstate Compact on Juveniles (ICJ) Hold		Immigration Hold		Institutional		Parole		Missing				
			#	%	#	%	#	%	#	%	#	%	#	%	#	%	#	%	#	%	#	%	#	%	#	%	#	%	#	%	#	%	#	%	
Central																																			
	1st	200	50	25.0%	37	18.5%	24	12.0%	0	0.0%	0	0.0%	15	7.5%	0	0.0%	0	0.0%	21	10.5%	38	19.0%	1	0.5%	0	0.0%	0	0.0%	1	0.5%	13	6.5%			
	2nd	362	143	39.5%	39	10.8%	0	0.0%	0	0.0%	0	0.0%	0	0.0%	0	0.0%	0	0.0%	61	16.9%	92	25.4%	5	1.4%	0	0.0%	1	0.3%	2	0.6%	19	5.2%			
	5th	6	2	33.3%	0	0.0%	1	16.7%	0	0.0%	0	0.0%	0	0.0%	0	0.0%	0	0.0%	0	0.0%	2	33.3%	0	0.0%	0	0.0%	0	0.0%	0	0.0%	0	0.0%			
	18th	445	136	30.6%	95	21.3%	0	0.0%	0	0.0%	0	0.0%	5	1.1%	0	0.0%	0	0.0%	32	7.2%	122	27.4%	2	0.4%	0	0.0%	1	0.2%	0	0.0%	52	11.7%			
Central Total		1,013	331	32.7%	171	16.9%	25	2.5%	0	0.0%	0	0.0%	21	2.1%	0	0.0%	0	0.0%	114	11.3%	254	25.1%	8	0.8%	0	0.0%	2	0.2%	3	0.3%	84	8.3%			
Northeast																																			
	8th	143	27	18.9%	19	13.3%	0	0.0%	0	0.0%	0	0.0%	0	0.0%	0	0.0%	0	0.0%	12	8.4%	76	53.1%	0	0.0%	0	0.0%	0	0.0%	0	0.0%	9	6.3%			
	13th	31	7	22.6%	6	19.4%	0	0.0%	0	0.0%	0	0.0%	1	3.2%	0	0.0%	0	0.0%	1	3.2%	15	48.4%	0	0.0%	0	0.0%	0	0.0%	0	0.0%	1	3.2%			
	17th	223	67	30.0%	16	7.2%	0	0.0%	0	0.0%	0	0.0%	3	1.3%	0	0.0%	0	0.0%	32	14.3%	66	29.6%	1	0.4%	0	0.0%	2	0.9%	0	0.0%	36	16.1%			
	19th	178	62	34.8%	36	20.2%	35	19.7%	0	0.0%	0	0.0%	2	1.1%	0	0.0%	0	0.0%	6	3.4%	37	20.8%	0	0.0%	0	0.0%	0	0.0%	0	0.0%	0	0.0%			
	20th	52	17	32.7%	6	11.5%	4	7.7%	0	0.0%	0	0.0%	6	11.5%	0	0.0%	5	9.6%	1	1.9%	10	19.2%	0	0.0%	0	0.0%	0	0.0%	0	0.0%	3	5.8%			
Northeast Total		627	180	28.7%	83	13.2%	39	6.2%	0	0.0%	0	0.0%	12	1.9%	0	0.0%	5	0.8%	52	8.3%	204	32.5%	1	0.2%	0	0.0%	2	0.3%	0	0.0%	49	7.8%			
Southern																																			
	3rd	11	9	81.8%	2	18.2%	0	0.0%	0	0.0%	0	0.0%	0	0.0%	0	0.0%	0	0.0%	0	0.0%	0	0.0%	0	0.0%	0	0.0%	0	0.0%	0	0.0%	0	0.0%			
	4th	371	172	46.4%	32	8.6%	3	0.8%	13	3.5%	0	0.0%	2	0.5%	0	0.0%	0	0.0%	48	12.9%	77	20.8%	0	0.0%	0	0.0%	7	1.9%	0	0.0%	17	4.6%			
	10th	87	30	34.5%	12	13.8%	1	1.1%	1	1.1%	0	0.0%	1	1.1%	1	1.1%	0	0.0%	19	21.8%	20	23.0%	0	0.0%	0	0.0%	0	0.0%	0	0.0%	2	2.3%			
	11th	20	10	50.0%	5	25.0%	0	0.0%	0	0.0%	0	0.0%	0	0.0%	0	0.0%	0	0.0%	0	0.0%	1	5.0%	0	0.0%	0	0.0%	0	0.0%	0	0.0%	4	20.0%			
	12th	13	5	38.5%	0	0.0%	1	7.7%	0	0.0%	0	0.0%	0	0.0%	0	0.0%	0	0.0%	3	23.1%	3	23.1%	0	0.0%	0	0.0%	0	0.0%	0	0.0%	1	7.7%			
	15th	9	4	44.4%	0	0.0%	0	0.0%	0	0.0%	0	0.0%	1	11.1%	0	0.0%	0	0.0%	0	0.0%	3	33.3%	0	0.0%	0	0.0%	0	0.0%	0	0.0%	1	11.1%			
	16th	9	3	33.3%	1	11.1%	1	11.1%	0	0.0%	0	0.0%	0	0.0%	0	0.0%	0	0.0%	1	11.1%	1	11.1%	0	0.0%	0	0.0%	0	0.0%	0	0.0%	2	22.2%			
Southern Total		520	233	44.8%	52	10.0%	6	1.2%	14	2.7%	0	0.0%	4	0.8%	1	0.2%	0	0.0%	71	13.7%	105	20.2%	0	0.0%	0	0.0%	7	1.3%	0	0.0%	27	5.2%			
Western																																			
	6th	4	2	50.0%	0	0.0%	0	0.0%	0	0.0%	0	0.0%	0	0.0%	0	0.0%	0	0.0%	0	0.0%	0	0.0%	0	0.0%	0	0.0%	0	0.0%	0	0.0%	2	50.0%			
	7th	13	4	30.8%	2	15.4%	0	0.0%	3	23.1%	0	0.0%	3	23.1%	0	0.0%	0	0.0%	1	7.7%	0	0.0%	0	0.0%	0	0.0%	0	0.0%	0	0.0%	0	0.0%			
	9th	15	4	26.7%	2	13.3%	1	6.7%	0	0.0%	0	0.0%	0	0.0%	0	0.0%	0	0.0%	0	0.0%	7	46.7%	0	0.0%	0	0.0%	0	0.0%	0	0.0%	1	6.7%			
	14th	7	2	28.6%	0	0.0%	0	0.0%	0	0.0%	0	0.0%	0	0.0%	0	0.0%	0	0.0%	0	0.0%	2	28.6%	0	0.0%	0	0.0%	0	0.0%	0	0.0%	3	42.9%			
	21st	115	30	26.1%	21	18.3%	0	0.0%	0	0.0%	0	0.0%	1	0.9%	0	0.0%	0	0.0%	5	4.3%	53	46.1%	0	0.0%	0	0.0%	0	0.0%	0	0.0%	5	4.3%			
	22nd	7	3	42.9%	0	0.0%	0	0.0%	0	0.0%	0	0.0%	0	0.0%	0	0.0%	0	0.0%	0	0.0%	3	42.9%	0	0.0%	0	0.0%	0	0.0%	0	0.0%	1	14.3%			
Western Total		161	45	28.0%	25	15.5%	1	0.6%	3	1.9%	0	0.0%	4	2.5%	0	0.0%	0	0.0%	6	3.7%	65	40.4%	0	0.0%	0	0.0%	0	0.0%	0	0.0%	12	7.5%			
Individual RD Totals		2,321	789	34.0%	331	14.3%	71	3.1%	17	0.7%	0	0.0%	41	1.8%	1	0.0%	5	0.2%	243	10.5%	628	27.1%	9	0.4%	0	0.0%	11	0.5%	3	0.1%	172	7.4%			
Statewide Totals		2,321	1,120	48.3%	88	3.8%					47					2.0%					871	37.5%					9					14	0.6%	172	7.4%

December 2019 CYDC Supplemental Report

DYS Detention Maximum Youth Served by Judicial District¹

Region	JD	Detention Capacity	Detention ADP		Maximum Youth Served on a Single Day ^{2,3}			
			December 2019	YTD	December 2019		YTD	
					Number of Youth	% of Detention Capacity	Number of Youth	% of Detention Capacity
<i>Central</i>								
	1st	35	13.8	17.8	19	54.3%	34	97.1%
	2nd	49	37.7	40.5	45	91.8%	52	106.1%
	5th	4	0.6	0.6	1	25.0%	2	50.0%
	18th	48	50.6	50.3	59	122.9%	62	129.2%
Central Region		136	102.7	109.2	114	83.8%	136	100.0%
<i>Northeast</i>								
	8th	14	16.1	13.7	21	150.0%	21	150.0%
	13th	5	3.3	2.7	5	100.0%	8	160.0%
	17th	28	19.1	23.3	23	82.1%	30	107.1%
	19th	18	12.4	10.6	17	94.4%	20	111.1%
	20th	8	5.0	5.2	8	100.0%	8	100.0%
Northeast Region		73	55.8	55.4	64	87.7%	68	93.2%
<i>Southern</i>								
	3rd	2	2.8	3.1	3	150.0%	8	400.0%
	4th	54	39.4	47.3	52	96.3%	61	113.0%
	10th	14	4.6	4.1	9	64.3%	9	64.3%
	11th	3	0.2	1.1	1	33.3%	5	166.7%
	12th	4	2.1	1.8	3	75.0%	5	125.0%
	15th	2	3.8	0.8	5	250.0%	5	250.0%
	16th	3	0.1	0.7	1	33.3%	3	100.0%
Southern Region		82	53.1	58.8	66	80.5%	73	89.0%
<i>Western</i>								
	6th	5	0.1	0.1	1	20.0%	1	20.0%
	7th	5	0.2	0.7	2	40.0%	4	80.0%
	9th	3	1.0	1.2	2	66.7%	4	133.3%
	14th	3	0.8	1.0	1	33.3%	3	100.0%
	21st	16	15.7	11.1	19	118.8%	20	125.0%
	22nd	4	0.0	0.8	0	0.0%	5	125.0%
Western Region		36	17.8	15.0	23	63.9%	24	66.7%
<i>Missing JD or Multiple JDs</i>			1.2	1.0				
Statewide		327	230.6	239.4	255	78.0%	284	86.9%

¹ Maximum youth served is the highest number of youth in detention on a single day during the month or fiscal year.

² Regional figures are not the sum of judicial districts, but represent the maximum count on one day for the entire region.

³ State figures are not the sum of regional figures, but represent the maximum count on one day for the entire state.

December 2019 CYDC Supplemental Report

CYDC Community ADP by Judicial District

Region	JD	Committed		Diversion		ICJ		Municipal		Pre-Adjudicated		Sentenced		VCO		Total	
		December 2019	YTD	December 2019	YTD	December 2019	YTD	December 2019	YTD	December 2019	YTD	December 2019	YTD	December 2019	YTD	December 2019	YTD
<i>Central</i>																	
	1st	2.3	2.4	2.0	3.6	0.0	0.0	46.0	34.8	196.3	180.5	35.5	38.6	0.0	0.0	282.1	259.9
	2nd	2.0	3.0	1.0	0.7	0.0	0.2	0.0	0.0	144.4	139.4	41.7	40.9	0.0	0.0	189.1	184.2
	5th	0.0	0.0	14.1	13.7	0.0	0.0	0.0	0.0	13.9	11.9	28.5	36.2	0.0	0.0	56.5	61.8
	18th	1.0	2.7	1.0	0.5	0.0	0.1	1.0	1.0	311.2	288.2	39.5	32.9	0.0	0.0	353.7	325.3
Central Total		5.3	8.1	18.1	18.5	0.0	0.4	47.0	35.8	665.8	619.9	145.2	148.6	0.0	0.0	881.4	831.3
<i>Northeast</i>																	
	8th	1.0	1.0	11.7	13.8	0.0	0.0	0.0	0.0	92.4	85.9	66.9	62.6	0.0	0.0	172.0	163.4
	13th	0.0	0.0	0.0	0.0	0.0	0.0	0.0	0.0	14.3	16.0	5.3	2.2	0.0	0.8	19.6	19.0
	17th	1.0	0.5	1.0	0.8	0.0	0.0	0.0	0.0	323.2	298.6	83.7	83.1	0.0	0.7	408.9	383.7
	19th	0.2	0.2	0.0	0.1	0.0	0.0	4.0	4.0	85.2	76.9	27.3	31.5	1.0	1.0	117.6	113.6
	20th	0.0	0.3	70.0	69.4	1.0	1.0	1.0	1.0	128.5	110.7	11.5	12.2	2.0	2.0	214.0	196.6
Northeast Total		2.2	1.9	82.7	84.1	1.0	1.0	5.0	5.0	643.5	588.2	194.7	191.6	3.0	4.5	932.1	876.2
<i>Southern</i>																	
	3rd	0.0	0.0	0.0	0.0	0.0	0.0	0.0	0.0	24.0	19.5	5.0	3.8	0.0	0.0	29.0	23.3
	4th	0.6	0.9	0.0	0.0	0.0	0.0	65.4	43.9	154.2	141.2	45.2	44.1	0.0	0.0	265.3	230.1
	10th	0.0	0.0	0.0	0.0	0.0	0.0	1.1	1.0	21.1	14.7	4.5	4.4	0.0	0.1	26.7	20.2
	11th	1.0	1.0	0.0	0.0	0.0	0.0	9.0	7.3	31.5	24.4	27.0	26.0	0.0	0.0	68.5	58.7
	12th	0.0	0.0	2.7	3.0	0.0	0.0	1.1	1.2	7.0	6.5	1.0	1.6	0.0	0.0	11.8	12.4
	15th	0.0	0.0	3.0	3.4	0.0	0.0	0.0	0.0	3.0	2.8	7.4	7.4	0.0	0.0	13.4	13.6
	16th	0.0	0.0	0.0	0.0	0.0	0.0	0.0	0.0	4.9	4.5	0.2	0.0	13.0	16.6	18.1	21.1
Southern Total		1.6	1.9	5.7	6.4	0.0	0.0	76.5	53.4	245.8	213.6	90.2	87.1	13.0	16.7	432.7	379.3
<i>Western</i>																	
	6th	0.0	0.0	0.0	0.0	0.0	0.0	1.0	0.6	3.7	3.9	0.0	0.0	0.0	0.0	4.7	4.4
	7th	0.0	0.0	16.0	13.8	0.0	0.0	1.5	0.8	12.5	9.5	3.8	3.6	0.0	0.0	33.8	27.7
	9th	0.0	0.0	1.0	0.8	0.0	0.0	2.0	1.1	11.8	10.5	2.0	1.0	0.0	0.0	16.8	13.4
	14th	0.0	0.0	9.1	9.8	0.0	0.0	0.0	0.0	6.0	5.2	1.2	0.2	0.0	0.0	16.3	15.2
	21st	0.0	0.0	0.0	0.0	0.0	0.0	0.0	0.0	79.1	73.9	27.0	24.2	0.0	0.0	106.0	98.2
	22nd	0.0	0.0	0.0	0.0	0.0	0.0	0.0	0.0	5.6	3.0	11.0	13.4	0.0	0.0	16.6	16.4
Western Total		0.0	0.0	26.1	24.4	0.0	0.0	4.5	2.5	118.6	106.0	45.0	42.4	0.0	0.0	194.2	175.3
Statewide Total		9.0	12.0	132.6	133.4	1.0	1.4	133.0	96.7	1673.7	1527.7	475.1	469.7	16.0	21.2	2440.4	2262.1