

November 2019 FY 2019-2020 CYDC JDSAG SUPPLEMENTAL REPORT

Prepared by the Division of Youth Services (DYS)

Data Management & Analysis

December 24, 2019



COLORADO

Division of Youth Services

Office of Children, Youth & Families

November 2019 CYDC Supplemental Report

DYS Commitment ADP & New Commitments by Judicial District

Region	JD ¹	2020 Population Estimates ²	ADP ³		New Commitments		
			November 2019	YTD	November 2019	YTD	YTD Rate ⁴
<i>Central</i>							
	1st	54,722	68.1	77.6	2	5	0.9
	2nd	57,309	74.9	73.0	3	17	3.0
	5th	9,320	4.0	4.2	0	0	0.0
	18th	115,605	72.2	77.7	3	12	1.0
Central Total		236,956	219.2	232.6	8	34	1.4
<i>Northeast</i>							
	8th	34,597	19.0	18.9	1	4	1.2
	13th	8,496	3.5	2.8	0	1	1.2
	17th	69,940	40.2	46.7	1	8	1.1
	19th	38,548	38.6	37.6	1	10	2.6
	20th	31,121	4.0	3.8	0	1	0.3
Northeast Total		182,702	105.2	109.9	3	24	1.3
<i>Southern</i>							
	3rd	1,817	3.0	3.0	0	0	0.0
	4th	83,065	67.8	69.1	2	14	1.7
	10th	18,110	9.8	11.1	0	2	1.1
	11th	7,264	2.6	2.8	1	2	2.8
	12th	5,399	5.0	5.0	0	3	5.6
	15th	2,125	3.0	3.0	0	0	0.0
	16th	2,762	2.0	1.6	0	0	0.0
Southern Total		120,542	93.1	95.6	3	21	1.7
<i>Western</i>							
	6th	7,285	0.9	3.1	0	0	0.0
	7th	10,595	8.3	7.0	0	4	3.8
	9th	8,578	4.4	4.8	0	0	0.0
	14th	5,752	0.0	0.0	0	0	0.0
	21st	16,322	35.8	36.3	1	8	4.9
	22nd	3,063	8.0	6.6	0	5	16.3
Western Total		51,595	57.3	57.8	1	17	3.3
Statewide Total		591,795	474.9	495.9	15	96	1.6

¹ JD represents the judicial district in which the client was committed. Regional totals are a sum of their respective judicial districts. Regional totals reported here may differ slightly from those reported in the Monthly Population Report, where region is defined by active caseloads.

² Source: DOLA 2020 Estimates.

³ Due to rounding, totals shown may not be an exact sum of the subtotals.

⁴ Per 10,000 youth in the population.

November 2019 CYDC Supplemental Report

DYS Detention ADP and New Detention Admissions by Judicial District

Region	JD	2020 Population Estimates ¹	ADP		New Admits		
			November 2019	YTD	November 2019	YTD	YTD New Admit Rate ²
<i>Central</i>							
	1st	54,722	19.9	18.6	35	174	31.8
	2nd	57,309	44.5	41.0	52	309	53.9
	5th	9,320	0.3	0.6	1	5	5.4
	18th	115,605	55.1	50.3	88	371	32.1
Central Total		236,956	119.8	110.5	176	859	36.3
<i>Northeast</i>							
	8th	34,597	13.7	13.2	28	120	34.7
	13th	8,496	4.7	2.5	8	28	33.0
	17th	69,940	25.0	24.4	41	193	27.6
	19th	38,548	10.5	10.2	35	140	36.3
	20th	31,121	4.6	5.2	9	41	13.2
Northeast Total		182,702	58.6	55.6	121	522	28.6
<i>Southern</i>							
	3rd	1,817	4.7	3.1	4	11	60.5
	4th	83,065	49.9	48.9	50	324	39.0
	10th	18,110	4.9	3.9	25	77	42.5
	11th	7,264	0.4	1.3	1	18	24.8
	12th	5,399	2.9	1.7	2	13	24.1
	15th	2,125	0.0	0.2	0	4	18.8
	16th	2,762	1.2	0.8	4	8	29.0
Southern Total		120,542	64.0	60.0	86	455	37.7
<i>Western</i>							
	6th	7,285	0.0	0.2	0	3	4.1
	7th	10,595	0.8	0.9	3	12	11.3
	9th	8,578	0.6	1.3	1	12	14.0
	14th	5,752	1.0	1.1	0	5	8.7
	21st	16,322	14.7	10.2	20	103	63.1
	22nd	3,063	0.0	0.9	0	7	22.9
Western Total		51,595	17.2	14.5	24	142	27.5
<i>Missing JD or Multiple JDs</i>			<i>0.4</i>	<i>0.9</i>			
Statewide Total		591,795	259.9	241.5	407	1,978	33.4

¹ Source: DOLA 2020 Estimates.

² Per 10,000 youth in the population.

November 2019 CYDC Supplemental Report

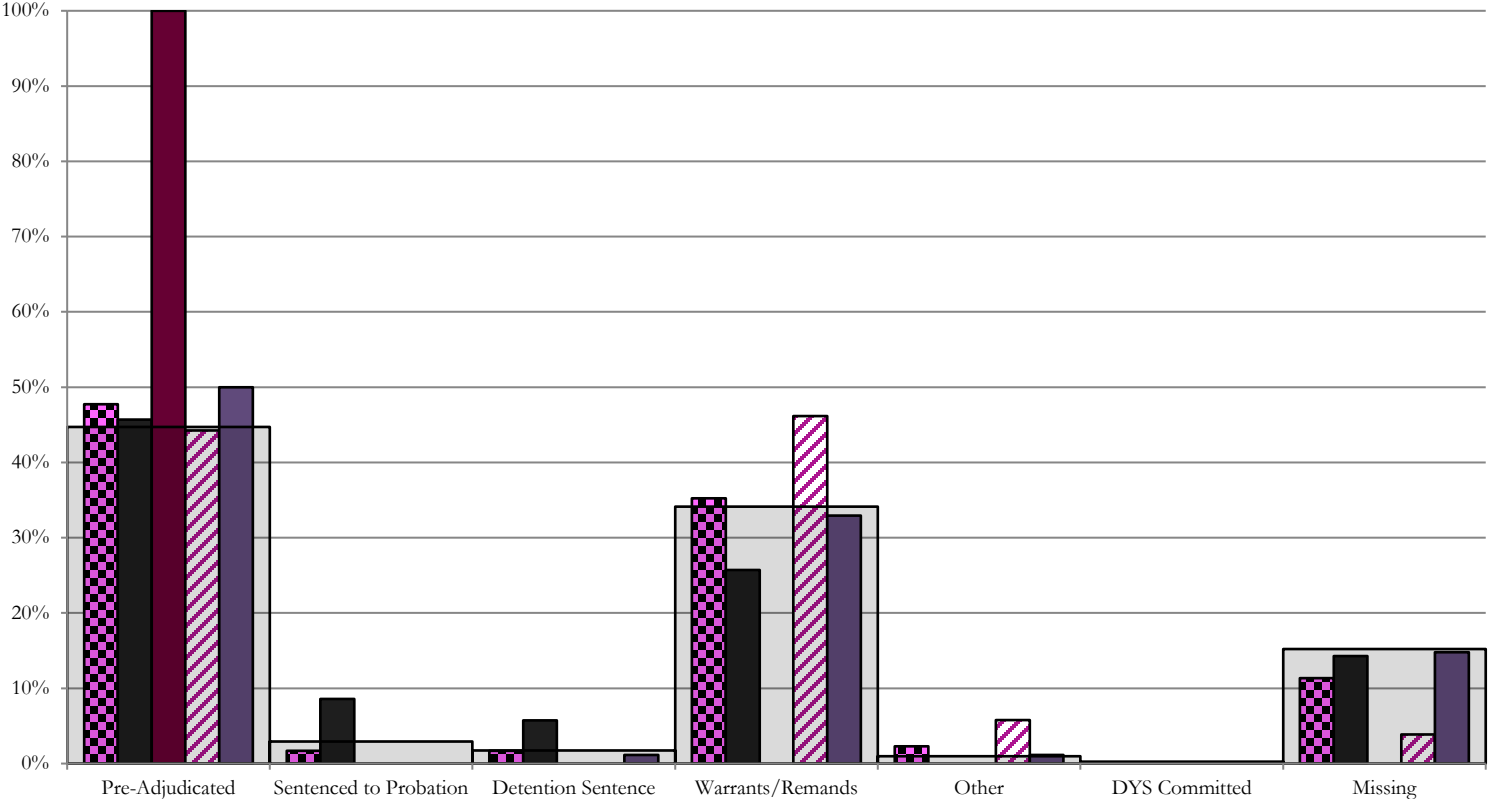
DYS Detention LOS by Judicial District				
Region	JD	YTD Detention Releases	YTD LOS (days)	LOS (days) Compared to State AVG
<i>Central</i>				
	1st	169	14.6	-1.8
	2nd	306	13.9	-2.4
	5th	6	15.4	-0.9
	18th	363	18.0	1.6
Central Total		844	15.8	-0.5
<i>Northeast</i>				
	8th	116	14.6	-1.8
	13th	28	8.3	-8.1
	17th	198	15.3	-1.1
	19th	137	11.9	-4.5
	20th	45	19.0	2.7
Northeast Total		524	14.2	-2.2
<i>Southern</i>				
	3rd	16	7.7	-8.7
	4th	315	19.5	3.2
	10th	73	6.5	-9.8
	11th	20	11.8	-4.6
	12th	11	12.4	-4.0
	15th	4	6.3	-10.1
	16th	7	0.9	-15.5
Southern Total		446	16.0	-0.3
<i>Western</i>				
	6th	4	5.5	-10.8
	7th	13	7.9	-8.5
	9th	14	23.2	6.8
	14th	4	14.8	-1.5
	21st	89	8.5	-7.9
	22nd	6	17.1	0.7
Western Total		130	10.5	-5.9
Statewide Total		1,947	16.4	-

November 2019 CDYC Supplemental Report

CYDC Reason Detained (RD) by Judicial District

Region	JD	Monthly New Admits	Pre-Adjudicated				Sentenced to Probation				Detention Sentence								Warrants/Remands				Other						DYS Committed		Missing									
			Felony		Misdemeanor		Technical Violator		New Charges		Probation Sentence		Detention Sentence		Valid Court Order (VCO) Truancy		Awaiting DSS (Social Services) Placement		Failure to Appear (FTA)		Failure to Comply (FTC)		Interstate Compact on Juveniles (ICJ) Hold		Immigration Hold		No Bond Hold		Out-of-Country Warrant		Institutional		Parole		Missing					
			#	%	#	%	#	%	#	%	#	%	#	%	#	%	#	%	#	%	#	%	#	%	#	%	#	%	#	%	#	%	#	%						
Central																																								
	1st	35	8	22.9%	8	22.9%	3	8.6%	0	0.0%	0	0.0%	2	5.7%	0	0.0%	0	0.0%	2	5.7%	7	20.0%	0	0.0%	0	0.0%	0	0.0%	0	0.0%	0	0.0%	0	0.0%	0	0.0%	5	14.3%		
	2nd	52	17	32.7%	6	11.5%	0	0.0%	0	0.0%	0	0.0%	0	0.0%	0	0.0%	0	0.0%	8	15.4%	16	30.8%	3	5.8%	0	0.0%	0	0.0%	0	0.0%	0	0.0%	0	0.0%	0	0.0%	2	3.8%		
	5th	1	1	100.0%	0	0.0%	0	0.0%	0	0.0%	0	0.0%	0	0.0%	0	0.0%	0	0.0%	0	0.0%	0	0.0%	0	0.0%	0	0.0%	0	0.0%	0	0.0%	0	0.0%	0	0.0%	0	0.0%	0	0.0%		
	18th	88	22	25.0%	22	25.0%	0	0.0%	0	0.0%	0	0.0%	1	1.1%	0	0.0%	0	0.0%	6	6.8%	23	26.1%	1	1.1%	0	0.0%	0	0.0%	0	0.0%	0	0.0%	0	0.0%	0	0.0%	13	14.8%		
Central Total		176	48	27%	36	20%	3	1.7%	0	0.0%	0	0.0%	3	1.7%	0	0.0%	0	0.0%	16	9%	46	26%	4	2.3%	0	0.0%	0	0.0%	0	0.0%	0	0.0%	0	0.0%	0	0.0%	20	11.4%		
Northeast																																								
	8th	28	2	7.1%	1	3.6%	0	0.0%	0	0.0%	0	0.0%	0	0.0%	0	0.0%	0	0.0%	0	0.0%	0	0.0%	0	0.0%	0	0.0%	0	0.0%	0	0.0%	0	0.0%	0	0.0%	0	0.0%	25	89.3%		
	13th	8	0	0.0%	1	12.5%	0	0.0%	0	0.0%	0	0.0%	0	0.0%	0	0.0%	0	0.0%	0	0.0%	5	62.5%	0	0.0%	0	0.0%	0	0.0%	0	0.0%	0	0.0%	0	0.0%	0	0.0%	2	25.0%		
	17th	41	17	41.5%	1	2.4%	0	0.0%	0	0.0%	0	0.0%	2	4.9%	0	0.0%	0	0.0%	4	9.8%	10	24.4%	0	0.0%	0	0.0%	0	0.0%	1	2.4%	0	0.0%	0	0.0%	6	14.6%				
	19th	35	11	31.4%	8	22.9%	4	11.4%	0	0.0%	0	0.0%	0	0.0%	0	0.0%	0	0.0%	2	5.7%	10	28.6%	0	0.0%	0	0.0%	0	0.0%	0	0.0%	0	0.0%	0	0.0%	0	0.0%	0	0.0%		
	20th	9	3	33.3%	0	0.0%	1	11.1%	0	0.0%	0	0.0%	1	11.1%	0	0.0%	0	0.0%	0	0.0%	2	22.2%	0	0.0%	0	0.0%	0	0.0%	0	0.0%	0	0.0%	0	0.0%	0	0.0%	2	22.2%		
Northeast Total		121	33	27%	11	9%	5	4.1%	0	0.0%	0	0.0%	3	2.5%	0	0.0%	0	0.0%	6	5.0%	27	22%	0	0.0%	0	0.0%	0	0.0%	0	0.0%	0	0.0%	1	0.8%	0	0.0%	35	29%		
Southern																																								
	3rd	4	3	75.0%	1	25.0%	0	0.0%	0	0.0%	0	0.0%	0	0.0%	0	0.0%	0	0.0%	0	0.0%	0	0.0%	0	0.0%	0	0.0%	0	0.0%	0	0.0%	0	0.0%	0	0.0%	0	0.0%	0	0.0%		
	4th	50	23	46.0%	4	8.0%	1	2.0%	2	4.0%	0	0.0%	0	0.0%	0	0.0%	0	0.0%	6	12.0%	10	20.0%	0	0.0%	0	0.0%	0	0.0%	0	0.0%	0	0.0%	0	0.0%	0	0.0%	4	8.0%		
	10th	25	9	36.0%	3	12.0%	0	0.0%	1	4.0%	0	0.0%	0	0.0%	0	0.0%	0	0.0%	8	32.0%	4	16.0%	0	0.0%	0	0.0%	0	0.0%	0	0.0%	0	0.0%	0	0.0%	0	0.0%	0	0.0%		
	11th	1	0	0.0%	1	100.0%	0	0.0%	0	0.0%	0	0.0%	0	0.0%	0	0.0%	0	0.0%	0	0.0%	0	0.0%	0	0.0%	0	0.0%	0	0.0%	0	0.0%	0	0.0%	0	0.0%	0	0.0%	0	0.0%		
	12th	2	1	50.0%	0	0.0%	0	0.0%	0	0.0%	0	0.0%	0	0.0%	0	0.0%	0	0.0%	1	50.0%	0	0.0%	0	0.0%	0	0.0%	0	0.0%	0	0.0%	0	0.0%	0	0.0%	0	0.0%	0	0.0%		
	15th	0	0	0.0%	0	0.0%	0	0.0%	0	0.0%	0	0.0%	0	0.0%	0	0.0%	0	0.0%	0	0.0%	0	0.0%	0	0.0%	0	0.0%	0	0.0%	0	0.0%	0	0.0%	0	0.0%	0	0.0%	0	0.0%		
	16th	4	0	0.0%	1	25.0%	0	0.0%	0	0.0%	0	0.0%	0	0.0%	0	0.0%	0	0.0%	1	25.0%	1	25.0%	0	0.0%	0	0.0%	0	0.0%	0	0.0%	0	0.0%	0	0.0%	0	0.0%	1	25.0%		
Southern Total		86	36	42%	10	12%	1	1.2%	3	3.5%	0	0.0%	0	0.0%	0	0.0%	0	0.0%	15	17%	16	19%	0	0.0%	0	0.0%	0	0.0%	0	0.0%	0	0.0%	0	0.0%	0	0.0%	5	6%		
Western																																								
	6th	0	0	0.0%	0	0.0%	0	0.0%	0	0.0%	0	0.0%	0	0.0%	0	0.0%	0	0.0%	0	0.0%	0	0.0%	0	0.0%	0	0.0%	0	0.0%	0	0.0%	0	0.0%	0	0.0%	0	0.0%	0	0%		
	7th	3	1	33.3%	1	33.3%	0	0.0%	0	0.0%	0	0.0%	1	33.3%	0	0.0%	0	0.0%	0	0.0%	0	0.0%	0	0.0%	0	0.0%	0	0.0%	0	0.0%	0	0.0%	0	0.0%	0	0.0%	0	0%		
	9th	1	0	0.0%	0	0.0%	0	0.0%	0	0.0%	0	0.0%	0	0.0%	0	0.0%	0	0.0%	0	0.0%	1	100.0%	0	0.0%	0	0.0%	0	0.0%	0	0.0%	0	0.0%	0	0.0%	0	0.0%	0	0%		
	14th	0	0	0.0%	0	0.0%	0	0.0%	0	0.0%	0	0.0%	0	0.0%	0	0.0%	0	0.0%	0	0.0%	0	0.0%	0	0.0%	0	0.0%	0	0.0%	0	0.0%	0	0.0%	0	0.0%	0	0.0%	0	0%		
	21st	20	4	20.0%	2	10.0%	0	0.0%	0	0.0%	0	0.0%	0	0.0%	0	0.0%	0	0.0%	0	0.0%	12	60.0%	0	0.0%	0	0.0%	0	0.0%	0	0.0%	0	0.0%	0	0.0%	0	0.0%	2	10%		
	22nd	0	0	0.0%	0	0.0%	0	0.0%	0	0.0%	0	0.0%	0	0.0%	0	0.0%	0	0.0%	0	0.0%	0	0.0%	0	0.0%	0	0.0%	0	0.0%	0	0.0%	0	0.0%	0	0.0%	0	0.0%	0	0%		
Western Total		24	5	21%	3	12.5%	0	0.0%	0	0.0%	0	0.0%	1	4.2%	0	0.0%	0	0.0%	0	0.0%	13	54%	0	0.0%	0	0.0%	0	0.0%	0	0.0%	0	0.0%	0	0.0%	0	0.0%	2	8%		
Individual RD Totals		407	122	30%	60	15%	9	2.2%	3	0.7%	0	0.0%	7	1.7%	0	0.0%	0	0.0%	37	9%	102	25%	4	1.0%	0	0.0%	0	0.0%	0	0.0%	0	0.0%	0	0.0%	1	0.2%	0	0.0%	62	15%
Statewide Totals		407	182	44.7%	12	2.9%	7	1.7%	0	0.0%	0	0.0%	139	34.2%	4	1.0%	0	0.0%	0	0.0%	0	0.0%	0	0.0%	0	0.0%	1	0.2%	0	0.0%	62	15%								

Central Region CYDC Reason Detained by Judicial District November 2019 New Admits



■ CENTRAL REGION, 176 New Admits

■ 5th JD, 1 New Admits

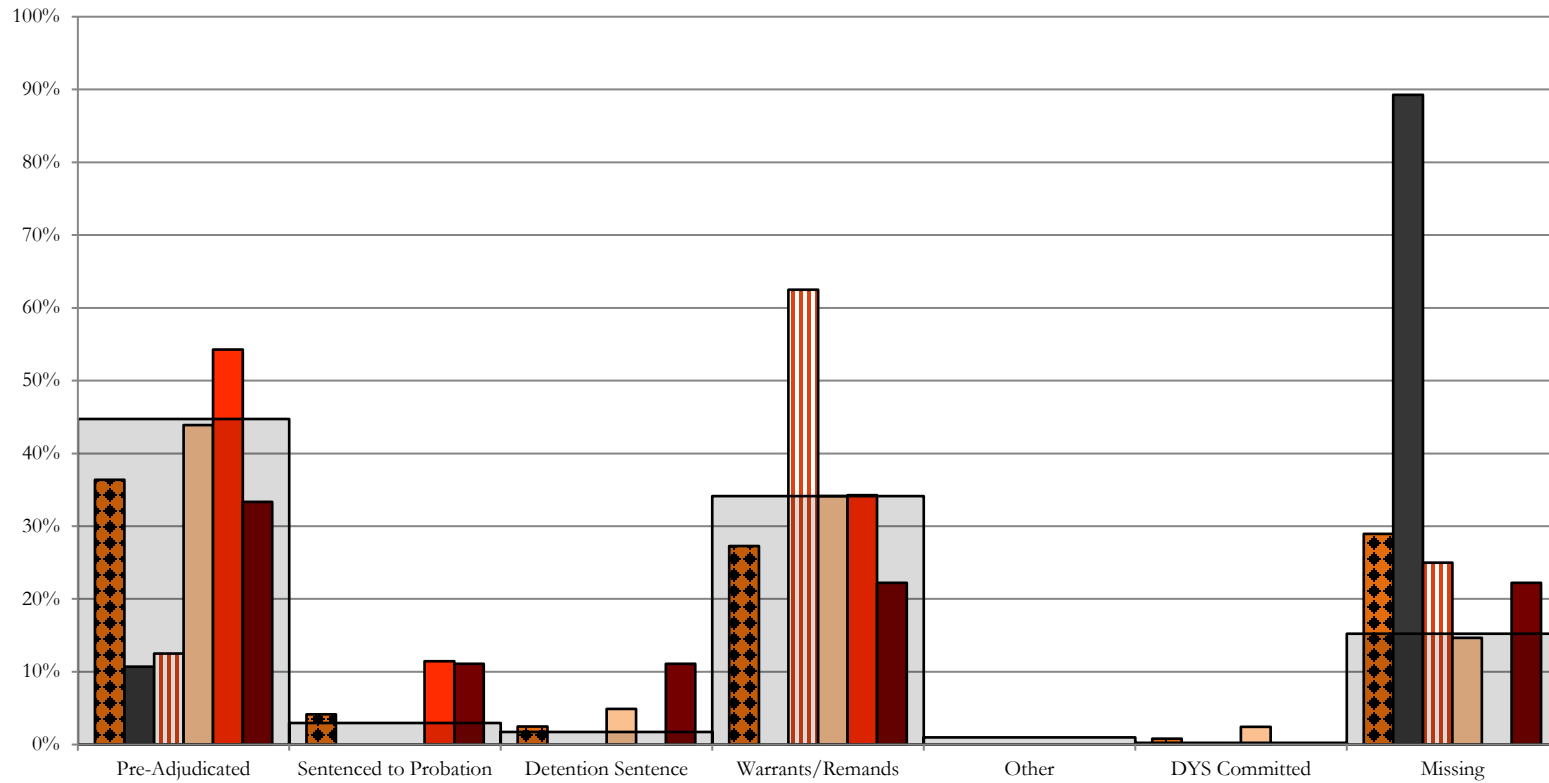
■ 18th JD, 88 New Admits

■ 1st JD, 35 New Admits

■ 2nd JD, 52 New Admits

■ STATEWIDE, 407 New Admits

Northeast Region CYDC Reason Detained by Judicial District November 2019 New Admits



■ NORTHEAST REGION, 121 New Admits

■ 8th JD, 28 New Admits

■ 13th JD, 8 New Admits

■ 17th JD, 41 New Admits

■ 19th JD, 35 New Admits

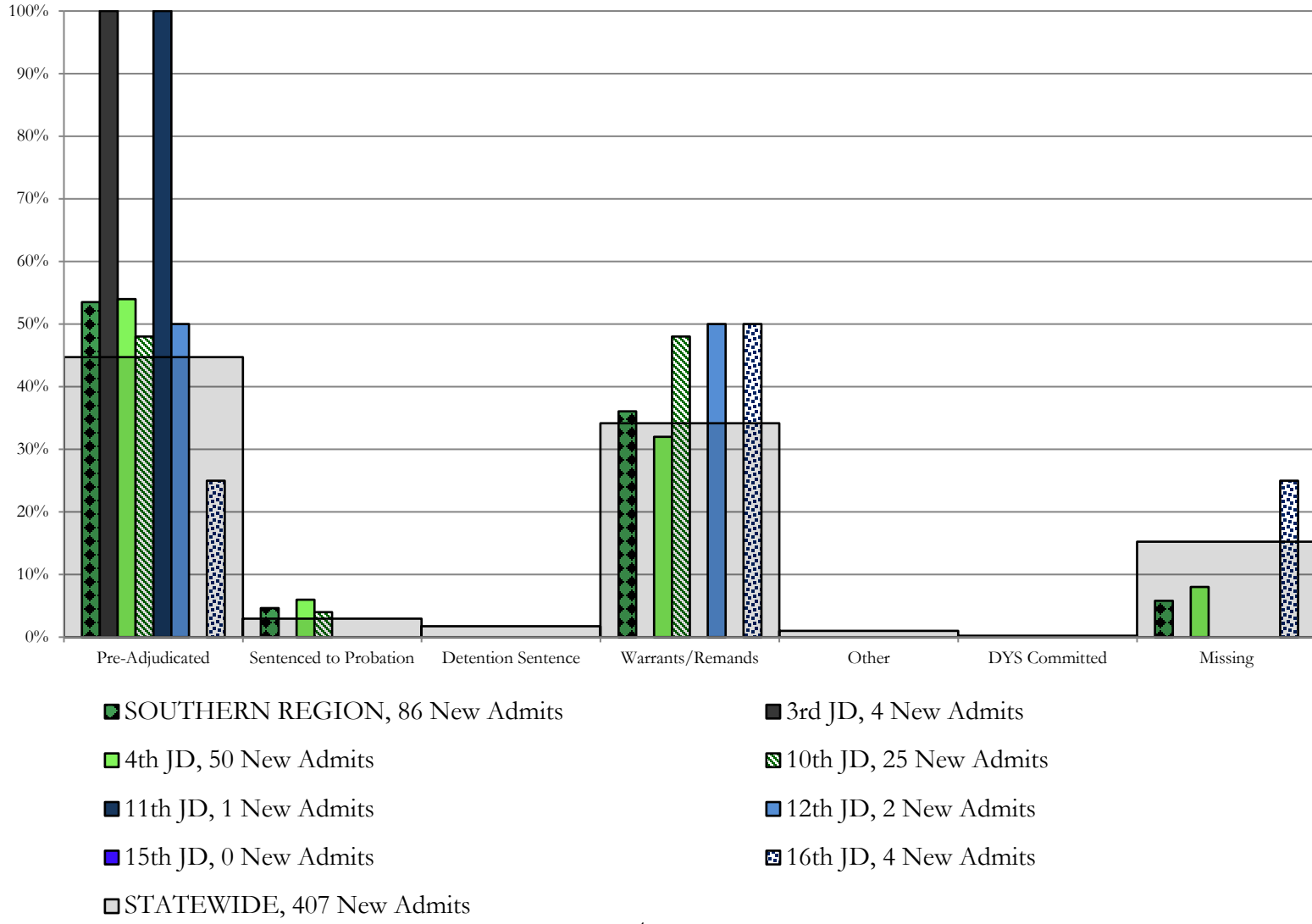
■ 20th JD, 9 New Admits

■ STATEWIDE, 407 New Admits

Southern Region

CYDC Reason Detained by Judicial District

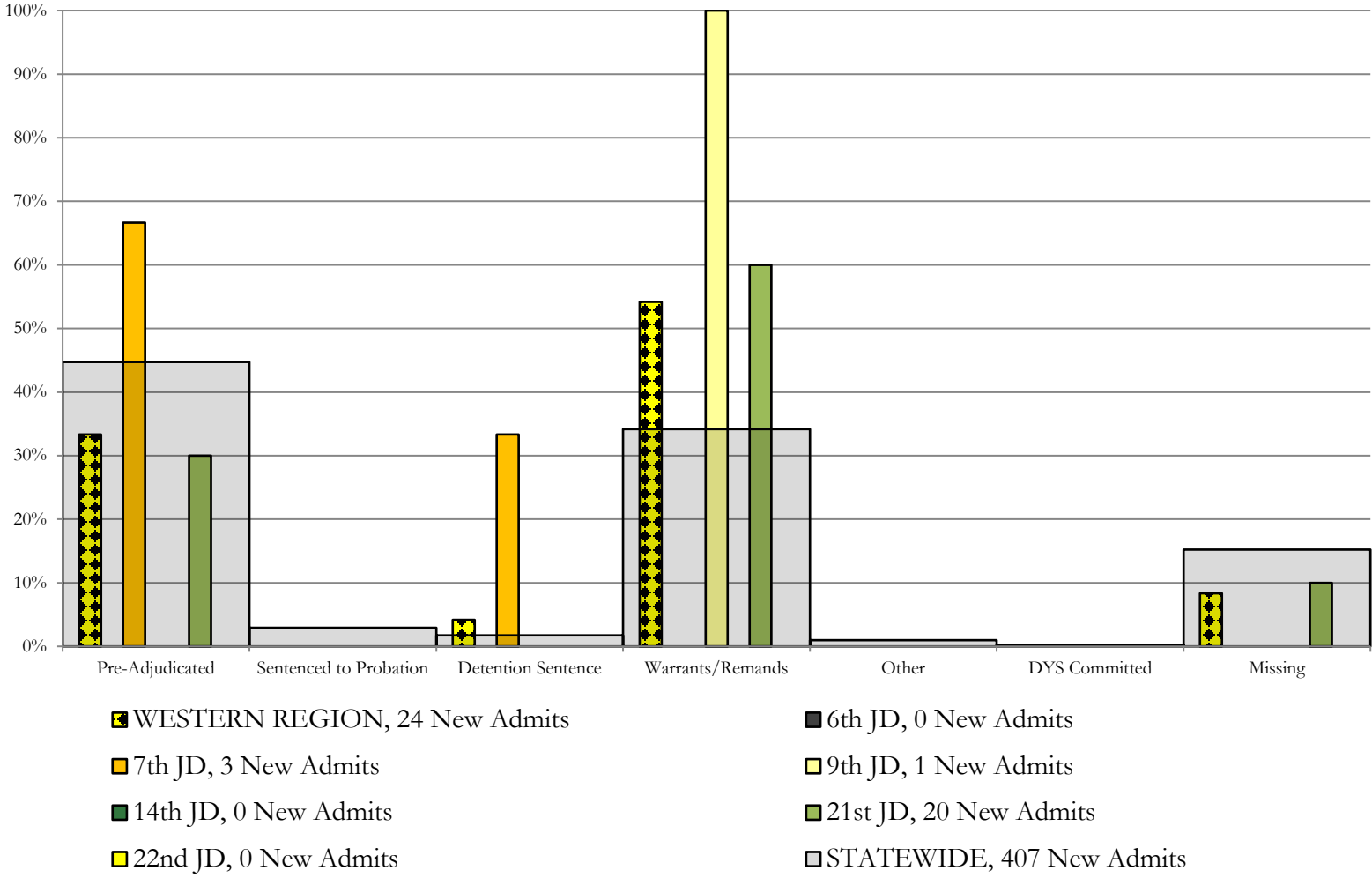
November 2019 New Admits



Western Region

CYDC Reason Detained by Judicial District

November 2019 New Admits



November 2019 CYDC Supplemental Report

DYS Detention Maximum Youth Served by Judicial District¹

Region	JD	Detention Capacity	Detention ADP		Maximum Youth Served on a Single Day ^{2,3}			
			November 2019	YTD	November 2019		YTD	
					Number of Youth	% of Detention Capacity	Number of Youth	% of Detention Capacity
<i>Central</i>								
	1st	35	19.9	18.6	25	71.4%	34	97.1%
	2nd	49	44.5	41.0	51	104.1%	52	106.1%
	5th	4	0.3	0.6	1	25.0%	2	50.0%
	18th	48	55.1	50.3	62	129.2%	62	129.2%
Central Region		136	119.8	110.5	130	95.6%	136	100.0%
<i>Northeast</i>								
	8th	14	13.7	13.2	18	128.6%	19	135.7%
	13th	5	4.7	2.5	8	160.0%	8	160.0%
	17th	28	25.0	24.4	29	103.6%	31	110.7%
	19th	18	10.5	10.2	15	83.3%	20	111.1%
	20th	8	4.6	5.2	7	87.5%	8	100.0%
Northeast Region		73	58.6	55.6	68	93.2%	68	93.2%
<i>Southern</i>								
	3rd	2	4.7	3.1	8	400.0%	8	400.0%
	4th	54	49.9	48.9	55	101.9%	61	113.0%
	10th	14	4.9	3.9	8	57.1%	8	57.1%
	11th	3	0.4	1.3	1	33.3%	5	166.7%
	12th	4	2.9	1.7	3	75.0%	5	125.0%
	15th	2	0.0	0.2	1	50.0%	2	100.0%
	16th	3	1.2	0.8	3	100.0%	3	100.0%
Southern Region		82	64.0	60.0	73	89.0%	73	89.0%
<i>Western</i>								
	6th	5	0.0	0.2	0	0.0%	1	20.0%
	7th	5	0.8	0.9	2	40.0%	4	80.0%
	9th	3	0.6	1.3	1	33.3%	4	133.3%
	14th	3	1.0	1.1	1	33.3%	3	100.0%
	21st	16	14.7	10.2	20	125.0%	20	125.0%
	22nd	4	0.0	0.9	1	25.0%	5	125.0%
Western Region		36	17.2	14.5	22	61.1%	24	66.7%
<i>Missing JD or Multiple JDs</i>			0.4	0.9				
Statewide		327	259.9	241.5	285	87.2%	285	87.2%

¹ Maximum youth served is the highest number of youth in detention on a single day during the month or fiscal year.

² Regional figures are not the sum of judicial districts, but represent the maximum count on one day for the entire region.

³ State figures are not the sum of regional figures, but represent the maximum count on one day for the entire state.

November 2019 CYDC Supplemental Report

CYDC Community ADP by Judicial District

Region	JD	Committed		Diversion		ICJ		Municipal		Pre-Adjudicated		Sentenced		VCO		Total	
		November 2019	YTD	November 2019	YTD	November 2019	YTD	November 2019	YTD	November 2019	YTD	November 2019	YTD	November 2019	YTD	November 2019	YTD
<i>Central</i>																	
	1st	2.8	2.3	2.1	3.9	0.0	0.0	27.4	28.3	199.7	178.6	34.2	39.3	0.0	0.0	266.2	252.5
	2nd	2.6	3.3	1.0	0.7	0.0	0.2	0.0	0.0	183.8	148.3	49.2	42.8	0.0	0.0	236.6	195.3
	5th	0.0	0.0	11.0	11.3	0.0	0.0	0.0	0.0	17.7	16.5	34.0	34.2	0.0	0.0	62.7	62.1
	18th	1.0	3.0	0.8	0.3	0.4	0.1	2.0	1.8	291.1	284.1	35.7	31.6	0.0	0.0	330.9	321.0
Central Total		6.4	8.7	14.9	16.2	0.4	0.4	29.4	30.1	692.3	627.5	153.1	147.9	0.0	0.0	896.4	830.8
<i>Northeast</i>																	
	8th	0.0	0.0	13.0	11.6	0.0	0.0	0.0	0.0	92.8	83.3	61.8	59.5	0.0	0.0	167.6	154.4
	13th	0.0	0.0	0.0	0.0	0.0	0.0	0.0	0.1	14.9	16.4	3.6	1.6	1.0	1.0	19.5	19.1
	17th	1.0	0.4	1.0	0.7	0.0	0.0	0.0	0.0	313.4	299.7	84.2	84.7	0.3	0.9	400.0	386.4
	19th	0.0	0.2	0.0	0.1	0.0	0.0	4.0	4.0	80.2	75.5	33.0	32.3	1.0	1.0	118.3	113.0
	20th	0.0	0.3	71.0	70.3	1.0	1.0	1.0	1.0	129.2	110.7	12.0	12.3	2.0	2.0	216.2	197.6
Northeast Total		1.0	0.9	85.0	82.8	1.0	1.0	5.0	5.0	630.4	585.7	194.7	190.4	4.3	4.8	921.5	870.7
<i>Southern</i>																	
	3rd	0.0	0.0	0.0	0.0	0.0	0.0	0.0	0.0	23.0	19.0	5.0	3.5	0.0	0.0	28.0	22.5
	4th	0.0	0.7	0.0	0.0	0.0	0.0	29.0	29.1	193.6	158.0	49.2	44.2	0.0	0.0	271.8	232.1
	10th	0.0	0.0	0.0	0.0	0.0	0.0	1.0	1.0	16.6	13.1	5.9	4.3	0.0	0.2	23.5	18.6
	11th	1.0	1.0	0.0	0.0	0.0	0.0	9.0	7.0	30.0	23.0	27.0	25.7	0.0	0.0	67.0	56.7
	12th	0.0	0.0	5.0	3.1	0.0	0.0	2.0	1.2	6.4	6.4	1.6	1.7	0.0	0.0	15.0	12.4
	15th	0.0	0.0	3.6	3.5	0.0	0.0	0.0	0.0	3.0	2.8	6.0	7.4	0.0	0.0	12.6	13.6
	16th	0.0	0.0	0.0	0.0	0.0	0.0	0.0	0.0	4.8	3.9	0.4	0.1	20.0	20.4	25.1	24.5
Southern Total		1.0	1.7	8.6	6.6	0.0	0.0	41.0	38.3	277.3	226.3	95.0	87.0	20.0	20.6	443.0	380.5
<i>Western</i>																	
	6th	0.0	0.0	0.0	0.0	0.0	0.0	1.0	0.5	2.2	3.9	0.0	0.0	0.0	0.0	3.2	4.4
	7th	0.0	0.0	11.0	12.6	0.0	0.0	1.0	0.7	8.0	8.4	2.4	3.5	0.0	0.0	22.4	25.2
	9th	0.0	0.0	1.0	0.8	0.0	0.0	2.2	0.9	9.3	10.0	2.0	0.8	0.0	0.0	14.4	12.5
	14th	0.0	0.0	9.8	9.9	0.0	0.0	0.0	0.0	5.4	5.0	0.0	0.0	0.0	0.0	15.2	14.9
	21st	0.0	0.0	0.0	0.0	0.0	0.0	0.0	0.0	80.1	72.8	25.2	23.7	0.0	0.0	105.3	96.5
	22nd	0.0	0.0	0.0	0.0	0.0	0.0	0.0	0.0	2.5	2.5	11.0	13.9	0.0	0.0	13.5	16.4
Western Total		0.0	0.0	21.8	23.4	0.0	0.0	4.2	2.0	107.4	102.7	40.6	41.9	0.0	0.0	174.0	170.0
Statewide Total		8.4	11.3	130.4	128.9	1.4	1.4	79.6	75.5	1707.5	1542.2	483.4	467.2	24.4	25.4	2435.0	2251.9