

# October 2019 FY 2019-2020 CYDC JDSAG SUPPLEMENTAL REPORT

---

Prepared by the Division of Youth Services (DYS)

Data Management & Analysis

November 21, 2019



**COLORADO**

**Division of Youth Services**

Office of Children, Youth & Families

# October 2019 CYDC Supplemental Report

## DYS Commitment ADP & New Commitments by Judicial District

Region	JD <sup>1</sup>	2020 Population Estimates <sup>2</sup>	ADP <sup>3</sup>		New Commitments		
			October 2019	YTD	October 2019	YTD	YTD Rate <sup>4</sup>
<i>Central</i>							
	1st	54,722	74.5	79.9	0	3	0.5
	2nd	57,309	72.9	72.6	5	14	2.4
	5th	9,320	4.0	4.3	0	0	0.0
	18th	115,605	74.3	79.1	1	8	0.7
<b>Central Total</b>		<b>236,956</b>	<b>225.7</b>	<b>235.8</b>	<b>6</b>	<b>25</b>	<b>1.1</b>
<i>Northeast</i>							
	8th	34,597	18.7	18.9	0	3	0.9
	13th	8,496	3.0	2.7	1	1	1.2
	17th	69,940	45.6	48.3	2	7	1.0
	19th	38,548	37.6	37.3	2	9	2.3
	20th	31,121	3.8	3.8	0	1	0.3
<b>Northeast Total</b>		<b>182,702</b>	<b>108.8</b>	<b>111.0</b>	<b>5</b>	<b>21</b>	<b>1.1</b>
<i>Southern</i>							
	3rd	1,817	3.0	3.0	0	0	0.0
	4th	83,065	68.9	69.4	3	12	1.4
	10th	18,110	9.7	11.4	0	2	1.1
	11th	7,264	2.0	2.9	0	1	1.4
	12th	5,399	5.3	5.0	0	3	5.6
	15th	2,125	3.0	3.0	0	0	0.0
	16th	2,762	2.0	1.5	0	0	0.0
<b>Southern Total</b>		<b>120,542</b>	<b>93.9</b>	<b>96.2</b>	<b>3</b>	<b>18</b>	<b>1.5</b>
<i>Western</i>							
	6th	7,285	3.0	3.6	0	0	0.0
	7th	10,595	8.0	6.7	0	4	3.8
	9th	8,578	4.9	4.9	0	0	0.0
	14th	5,752	0.0	0.0	0	0	0.0
	21st	16,322	37.6	36.4	2	7	4.3
	22nd	3,063	8.0	6.3	0	5	16.3
<b>Western Total</b>		<b>51,595</b>	<b>61.6</b>	<b>57.9</b>	<b>2</b>	<b>16</b>	<b>3.1</b>
<b>Statewide Total</b>		<b>591,795</b>	<b>489.9</b>	<b>500.9</b>	<b>16</b>	<b>80</b>	<b>1.4</b>

<sup>1</sup> JD represents the judicial district in which the client was committed. Regional totals are a sum of their respective judicial districts. Regional totals reported here may differ slightly from those reported in the Monthly Population Report, where region is defined by active caseloads.

<sup>2</sup> Source: DOLA 2020 Estimates.

<sup>3</sup> Due to rounding, totals shown may not be an exact sum of the subtotals.

<sup>4</sup> Per 10,000 youth in the population.

# October 2019 CYDC Supplemental Report

## DYS Detention ADP and New Detention Admissions by Judicial District

Region	JD	2020 Population Estimates <sup>1</sup>	ADP		New Admits		
			October 2019	YTD	October 2019	YTD	YTD New Admit Rate <sup>2</sup>
<i>Central</i>							
	1st	54,722	26.7	18.3	34	139	25.4
	2nd	57,309	45.1	40.2	67	257	44.8
	5th	9,320	0.6	0.7	1	4	4.3
	18th	115,605	52.0	49.1	78	283	24.5
<b>Central Total</b>		<b>236,956</b>	<b>124.3</b>	<b>108.3</b>	<b>180</b>	<b>683</b>	<b>28.8</b>
<i>Northeast</i>							
	8th	34,597	11.4	13.0	25	92	26.6
	13th	8,496	2.2	2.0	6	20	23.5
	17th	69,940	27.0	24.3	49	152	21.7
	19th	38,548	7.2	10.2	27	105	27.2
	20th	31,121	6.2	5.4	8	32	10.3
<b>Northeast Total</b>		<b>182,702</b>	<b>53.9</b>	<b>54.9</b>	<b>115</b>	<b>401</b>	<b>21.9</b>
<i>Southern</i>							
	3rd	1,817	3.4	2.7	0	7	38.5
	4th	83,065	49.4	48.7	68	274	33.0
	10th	18,110	5.5	3.7	18	52	28.7
	11th	7,264	1.4	1.5	4	17	23.4
	12th	5,399	2.1	1.4	5	11	20.4
	15th	2,125	0.1	0.2	1	4	18.8
	16th	2,762	1.0	0.7	1	4	14.5
<b>Southern Total</b>		<b>120,542</b>	<b>62.9</b>	<b>59.0</b>	<b>97</b>	<b>369</b>	<b>30.6</b>
<i>Western</i>							
	6th	7,285	0.0	0.2	0	3	4.1
	7th	10,595	0.2	0.9	4	9	8.5
	9th	8,578	1.3	1.4	1	11	12.8
	14th	5,752	1.3	1.1	0	5	8.7
	21st	16,322	9.8	9.1	18	83	50.9
	22nd	3,063	0.5	1.1	2	7	22.9
<b>Western Total</b>		<b>51,595</b>	<b>13.1</b>	<b>13.8</b>	<b>25</b>	<b>118</b>	<b>22.9</b>
<i>Missing JD or Multiple JDs</i>			<i>1.3</i>	<i>1.1</i>			
<b>Statewide Total</b>		<b>591,795</b>	<b>255.5</b>	<b>237.0</b>	<b>417</b>	<b>1,571</b>	<b>26.5</b>

<sup>1</sup> Source: DOLA 2020 Estimates.

<sup>2</sup> Per 10,000 youth in the population.

# October 2019 CYDC Supplemental Report

DYS Detention LOS by Judicial District				
Region	JD	YTD Detention Releases	YTD LOS (days)	LOS (days) Compared to State AVG
<i>Central</i>				
	1st	130	13.8	-3.1
	2nd	255	13.6	-3.3
	5th	5	16.9	0.0
	18th	273	18.6	1.7
<b>Central Total</b>		<b>663</b>	<b>15.8</b>	<b>-1.2</b>
<i>Northeast</i>				
	8th	95	15.7	-1.3
	13th	21	8.7	-8.3
	17th	154	16.3	-0.7
	19th	107	13.5	-3.5
	20th	37	20.3	3.3
<b>Northeast Total</b>		<b>414</b>	<b>15.4</b>	<b>-1.6</b>
<i>Southern</i>				
	3rd	11	4.9	-12.0
	4th	264	20.5	3.5
	10th	53	6.7	-10.2
	11th	18	11.3	-5.7
	12th	9	13.1	-3.9
	15th	3	7.4	-9.6
	16th	3	1.3	-15.6
<b>Southern Total</b>		<b>361</b>	<b>17.1</b>	<b>0.1</b>
<i>Western</i>				
	6th	4	5.5	-11.4
	7th	11	9.2	-7.8
	9th	13	21.5	4.6
	14th	4	14.9	-2.1
	21st	70	8.0	-9.0
	22nd	4	22.4	5.4
<b>Western Total</b>		<b>106</b>	<b>10.5</b>	<b>-6.5</b>
<b>Statewide Total</b>		<b>1,545</b>	<b>17.0</b>	<b>-</b>

## October 2019 CDYC Supplemental Report

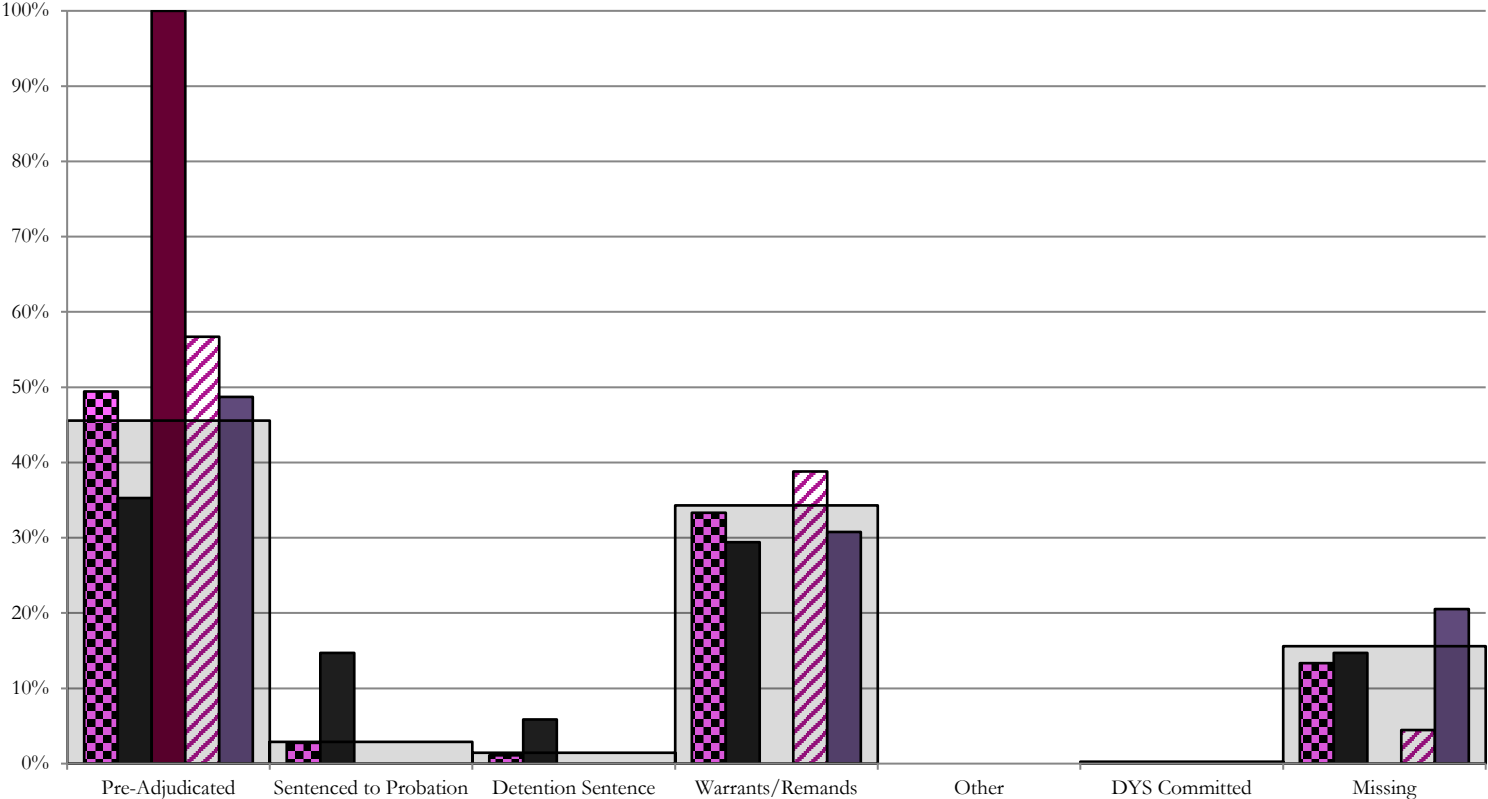
### CYDC Reason Detained (RD) by Judicial District

Region	JD	Pre-Adjudicated		Sentenced to Probation				Detention Sentence								Warrants/Remands				Other						DYS Committed		Missing										
		Felony		Misdemeanor		Technical Violator		New Charges		Probation Sentence		Detention Sentence		Valid Court Order (VCO) Truancy		Awaiting DSS (Social Services) Placement		Failure to Appear (FTA)		Failure to Comply (FTC)		Interstate Compact on Juveniles (ICJ) Hold		Immigration Hold		No Bond Hold		Out-of-Country Warrant		Institutional		Parole		Missing				
		#	%	#	%	#	%	#	%	#	%	#	%	#	%	#	%	#	%	#	%	#	%	#	%	#	%	#	%	#	%	#	%	#	%			
<b>Central</b>																																						
	1st	34	8	23.5%	4	11.8%	5	14.7%	0	0.0%	0	0.0%	2	5.9%	0	0.0%	0	0.0%	4	11.8%	6	17.6%	0	0.0%	0	0.0%	0	0.0%	0	0.0%	0	0.0%	0	0.0%	0	0.0%	5	14.7%
	2nd	67	34	50.7%	4	6.0%	0	0.0%	0	0.0%	0	0.0%	0	0.0%	0	0.0%	0	0.0%	9	13.4%	17	25.4%	0	0.0%	0	0.0%	0	0.0%	0	0.0%	0	0.0%	0	0.0%	0	0.0%	3	4.5%
	5th	1	1	100.0%	0	0.0%	0	0.0%	0	0.0%	0	0.0%	0	0.0%	0	0.0%	0	0.0%	0	0.0%	0	0.0%	0	0.0%	0	0.0%	0	0.0%	0	0.0%	0	0.0%	0	0.0%	0	0.0%	0	0.0%
	18th	78	20	25.6%	18	23.1%	0	0.0%	0	0.0%	0	0.0%	0	0.0%	0	0.0%	0	0.0%	6	7.7%	18	23.1%	0	0.0%	0	0.0%	0	0.0%	0	0.0%	0	0.0%	0	0.0%	0	0.0%	16	20.5%
<b>Central Total</b>		<b>180</b>	<b>63</b>	<b>35%</b>	<b>26</b>	<b>14%</b>	<b>5</b>	<b>2.8%</b>	<b>0</b>	<b>0.0%</b>	<b>0</b>	<b>0.0%</b>	<b>2</b>	<b>1.1%</b>	<b>0</b>	<b>0.0%</b>	<b>0</b>	<b>0.0%</b>	<b>19</b>	<b>11%</b>	<b>41</b>	<b>23%</b>	<b>0</b>	<b>0.0%</b>	<b>0</b>	<b>0.0%</b>	<b>0</b>	<b>0.0%</b>	<b>0</b>	<b>0.0%</b>	<b>0</b>	<b>0.0%</b>	<b>0</b>	<b>0.0%</b>	<b>0</b>	<b>0.0%</b>	<b>24</b>	<b>13.3%</b>
<b>Northeast</b>																																						
	8th	25	3	12.0%	0	0.0%	0	0.0%	0	0.0%	0	0.0%	0	0.0%	0	0.0%	0	0.0%	2	8.0%	0	0.0%	0	0.0%	0	0.0%	0	0.0%	0	0.0%	0	0.0%	0	0.0%	0	0.0%	20	80.0%
	13th	6	1	16.7%	2	33.3%	0	0.0%	0	0.0%	0	0.0%	0	0.0%	0	0.0%	0	0.0%	0	0.0%	3	50.0%	0	0.0%	0	0.0%	0	0.0%	0	0.0%	0	0.0%	0	0.0%	0	0.0%	0	0.0%
	17th	49	18	36.7%	1	2.0%	0	0.0%	0	0.0%	0	0.0%	0	0.0%	0	0.0%	0	0.0%	7	14.3%	11	22.4%	0	0.0%	0	0.0%	0	0.0%	0	0.0%	1	2.0%	0	0.0%	11	22.4%		
	19th	27	10	37.0%	3	11.1%	6	22.2%	0	0.0%	0	0.0%	0	0.0%	0	0.0%	0	0.0%	2	7.4%	6	22.2%	0	0.0%	0	0.0%	0	0.0%	0	0.0%	0	0.0%	0	0.0%	0	0.0%	0	0.0%
	20th	8	3	37.5%	1	12.5%	0	0.0%	0	0.0%	0	0.0%	2	25.0%	0	0.0%	0	0.0%	1	12.5%	1	12.5%	0	0.0%	0	0.0%	0	0.0%	0	0.0%	0	0.0%	0	0.0%	0	0.0%	0	0.0%
<b>Northeast Total</b>		<b>115</b>	<b>35</b>	<b>30%</b>	<b>7</b>	<b>6%</b>	<b>6</b>	<b>5.2%</b>	<b>0</b>	<b>0.0%</b>	<b>0</b>	<b>0.0%</b>	<b>2</b>	<b>1.7%</b>	<b>0</b>	<b>0.0%</b>	<b>0</b>	<b>0.0%</b>	<b>12</b>	<b>10.4%</b>	<b>21</b>	<b>18%</b>	<b>0</b>	<b>0.0%</b>	<b>0</b>	<b>0.0%</b>	<b>0</b>	<b>0.0%</b>	<b>0</b>	<b>0.0%</b>	<b>0</b>	<b>0.0%</b>	<b>1</b>	<b>0.9%</b>	<b>0</b>	<b>0.0%</b>	<b>31</b>	<b>27%</b>
<b>Southern</b>																																						
	3rd	0	0	0.0%	0	0.0%	0	0.0%	0	0.0%	0	0.0%	0	0.0%	0	0.0%	0	0.0%	0	0.0%	0	0.0%	0	0.0%	0	0.0%	0	0.0%	0	0.0%	0	0.0%	0	0.0%	0	0.0%	0	0.0%
	4th	68	26	38.2%	4	5.9%	0	0.0%	0	0.0%	0	0.0%	0	0.0%	0	0.0%	0	0.0%	14	20.6%	19	27.9%	0	0.0%	0	0.0%	0	0.0%	0	0.0%	0	0.0%	0	0.0%	0	0.0%	5	7.4%
	10th	18	4	22.2%	5	27.8%	0	0.0%	0	0.0%	0	0.0%	1	5.6%	0	0.0%	0	0.0%	5	27.8%	3	16.7%	0	0.0%	0	0.0%	0	0.0%	0	0.0%	0	0.0%	0	0.0%	0	0.0%	0	0.0%
	11th	4	3	75.0%	0	0.0%	0	0.0%	0	0.0%	0	0.0%	0	0.0%	0	0.0%	0	0.0%	0	0.0%	0	0.0%	0	0.0%	0	0.0%	0	0.0%	0	0.0%	0	0.0%	0	0.0%	1	25.0%		
	12th	5	1	20.0%	0	0.0%	0	0.0%	0	0.0%	0	0.0%	0	0.0%	0	0.0%	0	0.0%	2	40.0%	1	20.0%	0	0.0%	0	0.0%	0	0.0%	0	0.0%	0	0.0%	0	0.0%	1	20.0%		
	15th	1	0	0.0%	0	0.0%	0	0.0%	0	0.0%	0	0.0%	0	0.0%	0	0.0%	0	0.0%	0	0.0%	0	0.0%	0	0.0%	0	0.0%	0	0.0%	0	0.0%	0	0.0%	0	0.0%	1	100.0%		
	16th	1	1	100.0%	0	0.0%	0	0.0%	0	0.0%	0	0.0%	0	0.0%	0	0.0%	0	0.0%	0	0.0%	0	0.0%	0	0.0%	0	0.0%	0	0.0%	0	0.0%	0	0.0%	0	0.0%	0	0.0%		
<b>Southern Total</b>		<b>97</b>	<b>35</b>	<b>36%</b>	<b>9</b>	<b>9%</b>	<b>0</b>	<b>0.0%</b>	<b>0</b>	<b>0.0%</b>	<b>0</b>	<b>0.0%</b>	<b>1</b>	<b>1.0%</b>	<b>0</b>	<b>0.0%</b>	<b>0</b>	<b>0.0%</b>	<b>21</b>	<b>22%</b>	<b>23</b>	<b>24%</b>	<b>0</b>	<b>0.0%</b>	<b>0</b>	<b>0.0%</b>	<b>0</b>	<b>0.0%</b>	<b>0</b>	<b>0.0%</b>	<b>0</b>	<b>0.0%</b>	<b>0</b>	<b>0.0%</b>	<b>0</b>	<b>0.0%</b>	<b>8</b>	<b>8%</b>
<b>Western</b>																																						
	6th	0	0	0.0%	0	0.0%	0	0.0%	0	0.0%	0	0.0%	0	0.0%	0	0.0%	0	0.0%	0	0.0%	0	0.0%	0	0.0%	0	0.0%	0	0.0%	0	0.0%	0	0.0%	0	0.0%	0	0.0%	0	0%
	7th	4	2	50.0%	0	0.0%	0	0.0%	1	25.0%	0	0.0%	1	25.0%	0	0.0%	0	0.0%	0	0.0%	0	0.0%	0	0.0%	0	0.0%	0	0.0%	0	0.0%	0	0.0%	0	0.0%	0	0.0%	0	0%
	9th	1	0	0.0%	0	0.0%	0	0.0%	0	0.0%	0	0.0%	0	0.0%	0	0.0%	0	0.0%	0	0.0%	0	0.0%	0	0.0%	0	0.0%	0	0.0%	0	0.0%	0	0.0%	0	0.0%	1	100%		
	14th	0	0	0.0%	0	0.0%	0	0.0%	0	0.0%	0	0.0%	0	0.0%	0	0.0%	0	0.0%	0	0.0%	0	0.0%	0	0.0%	0	0.0%	0	0.0%	0	0.0%	0	0.0%	0	0.0%	0	0%		
	21st	18	6	33.3%	6	33.3%	0	0.0%	0	0.0%	0	0.0%	0	0.0%	0	0.0%	0	0.0%	6	33.3%	0	0.0%	0	0.0%	0	0.0%	0	0.0%	0	0.0%	0	0.0%	0	0.0%	0	0.0%	0	0%
	22nd	2	1	50.0%	0	0.0%	0	0.0%	0	0.0%	0	0.0%	0	0.0%	0	0.0%	0	0.0%	0	0.0%	0	0.0%	0	0.0%	0	0.0%	0	0.0%	0	0.0%	0	0.0%	0	0.0%	1	50%		
<b>Western Total</b>		<b>25</b>	<b>9</b>	<b>36%</b>	<b>6</b>	<b>24.0%</b>	<b>0</b>	<b>0.0%</b>	<b>1</b>	<b>4.0%</b>	<b>0</b>	<b>0.0%</b>	<b>1</b>	<b>4.0%</b>	<b>0</b>	<b>0.0%</b>	<b>0</b>	<b>0.0%</b>	<b>6</b>	<b>24%</b>	<b>0</b>	<b>0.0%</b>	<b>0</b>	<b>0.0%</b>	<b>0</b>	<b>0.0%</b>	<b>0</b>	<b>0.0%</b>	<b>0</b>	<b>0.0%</b>	<b>0</b>	<b>0.0%</b>	<b>0</b>	<b>0.0%</b>	<b>2</b>	<b>8%</b>		
<b>Individual RD Totals</b>		<b>417</b>	<b>142</b>	<b>34%</b>	<b>48</b>	<b>12%</b>	<b>11</b>	<b>2.6%</b>	<b>1</b>	<b>0.2%</b>	<b>0</b>	<b>0.0%</b>	<b>6</b>	<b>1.4%</b>	<b>0</b>	<b>0.0%</b>	<b>0</b>	<b>0.0%</b>	<b>52</b>	<b>12%</b>	<b>91</b>	<b>22%</b>	<b>0</b>	<b>0.0%</b>	<b>0</b>	<b>0.0%</b>	<b>0</b>	<b>0.0%</b>	<b>0</b>	<b>0.0%</b>	<b>0</b>	<b>0.0%</b>	<b>1</b>	<b>0.2%</b>	<b>0</b>	<b>0.0%</b>	<b>65</b>	<b>16%</b>
<b>Statewide Totals</b>		<b>417</b>	<b>190</b>	<b>45.6%</b>	<b>12</b>	<b>2.9%</b>	<b>6</b>	<b>1.4%</b>	<b>0</b>	<b>0.0%</b>	<b>0</b>	<b>0.0%</b>	<b>6</b>	<b>1.4%</b>	<b>0</b>	<b>0.0%</b>	<b>0</b>	<b>0.0%</b>	<b>143</b>	<b>34.3%</b>	<b>0</b>	<b>0.0%</b>	<b>0</b>	<b>0.0%</b>	<b>0</b>	<b>0.0%</b>	<b>0</b>	<b>0.0%</b>	<b>1</b>	<b>0.2%</b>	<b>0</b>	<b>0.0%</b>	<b>65</b>	<b>16%</b>				

# Central Region

## CYDC Reason Detained by Judicial District

### October 2019 New Admits



■ CENTRAL REGION, 180 New Admits

■ 5th JD, 1 New Admits

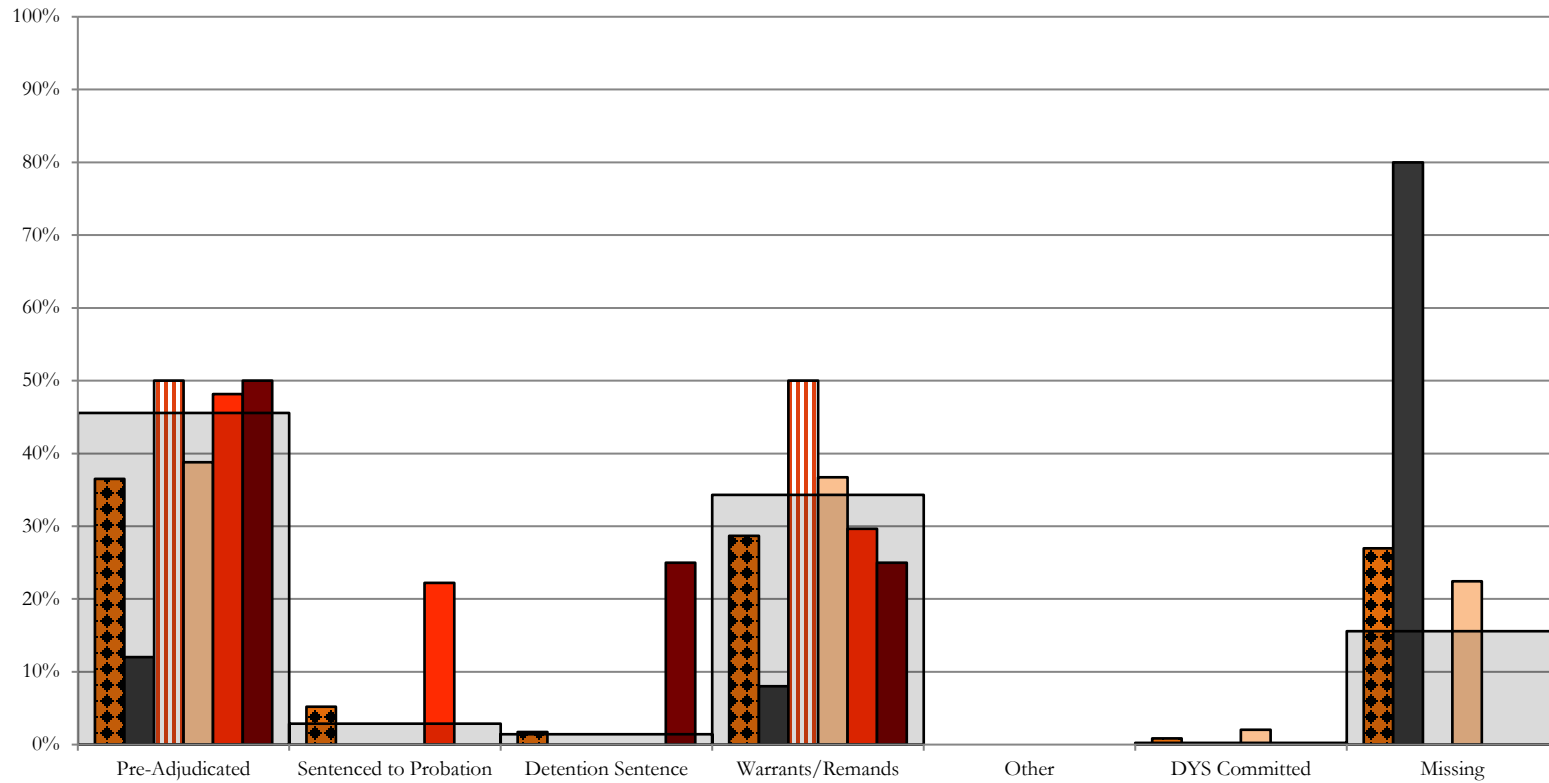
■ 18th JD, 78 New Admits

■ 1st JD, 34 New Admits

■ 2nd JD, 67 New Admits

■ STATEWIDE, 417 New Admits

## Northeast Region CYDC Reason Detained by Judicial District October 2019 New Admits



■ NORTHEAST REGION, 115 New Admits

■ 8th JD, 25 New Admits

■ 13th JD, 6 New Admits

■ 17th JD, 49 New Admits

■ 19th JD, 27 New Admits

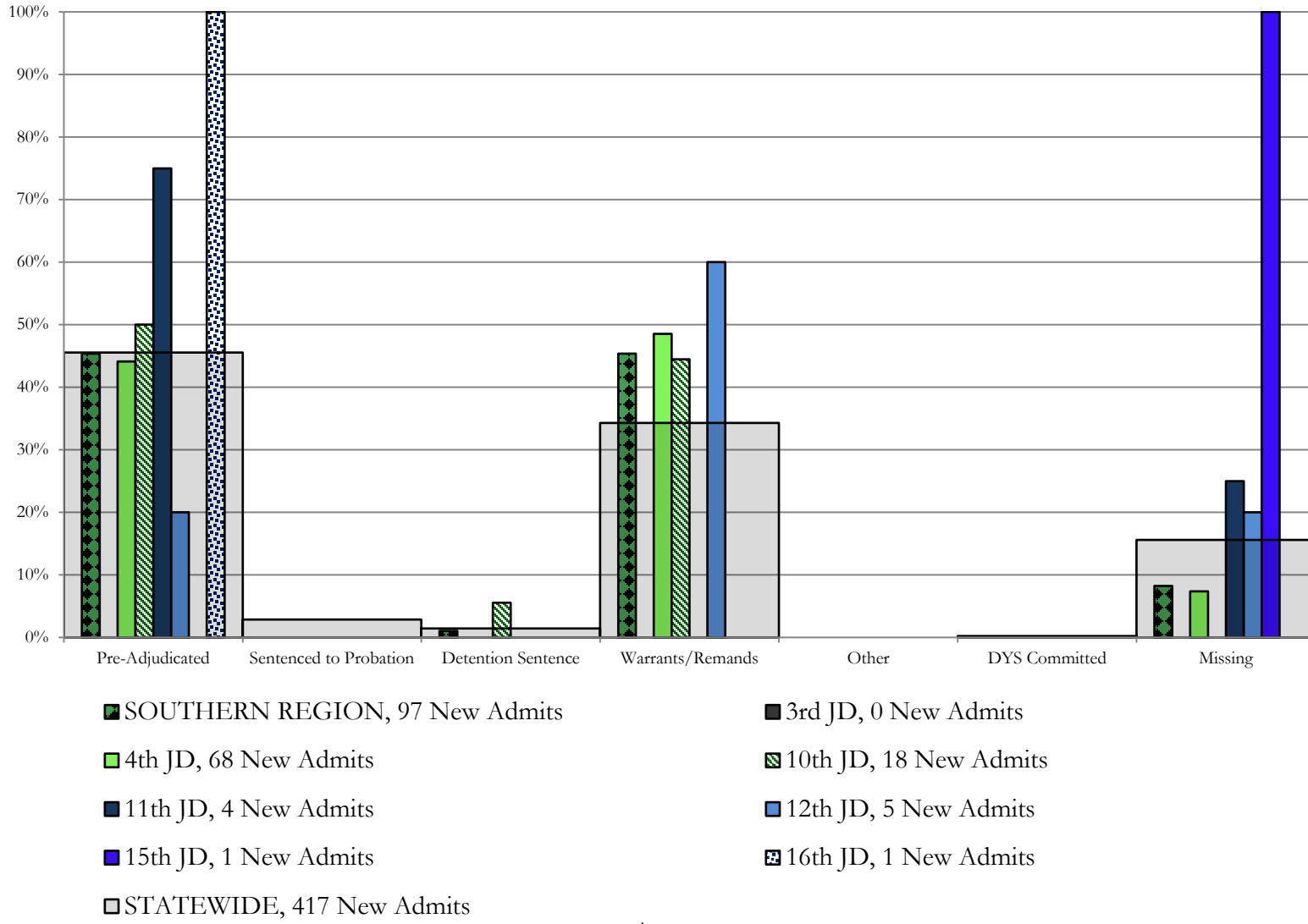
■ 20th JD, 8 New Admits

■ STATEWIDE, 417 New Admits

# Southern Region

## CYDC Reason Detained by Judicial District

### October 2019 New Admits

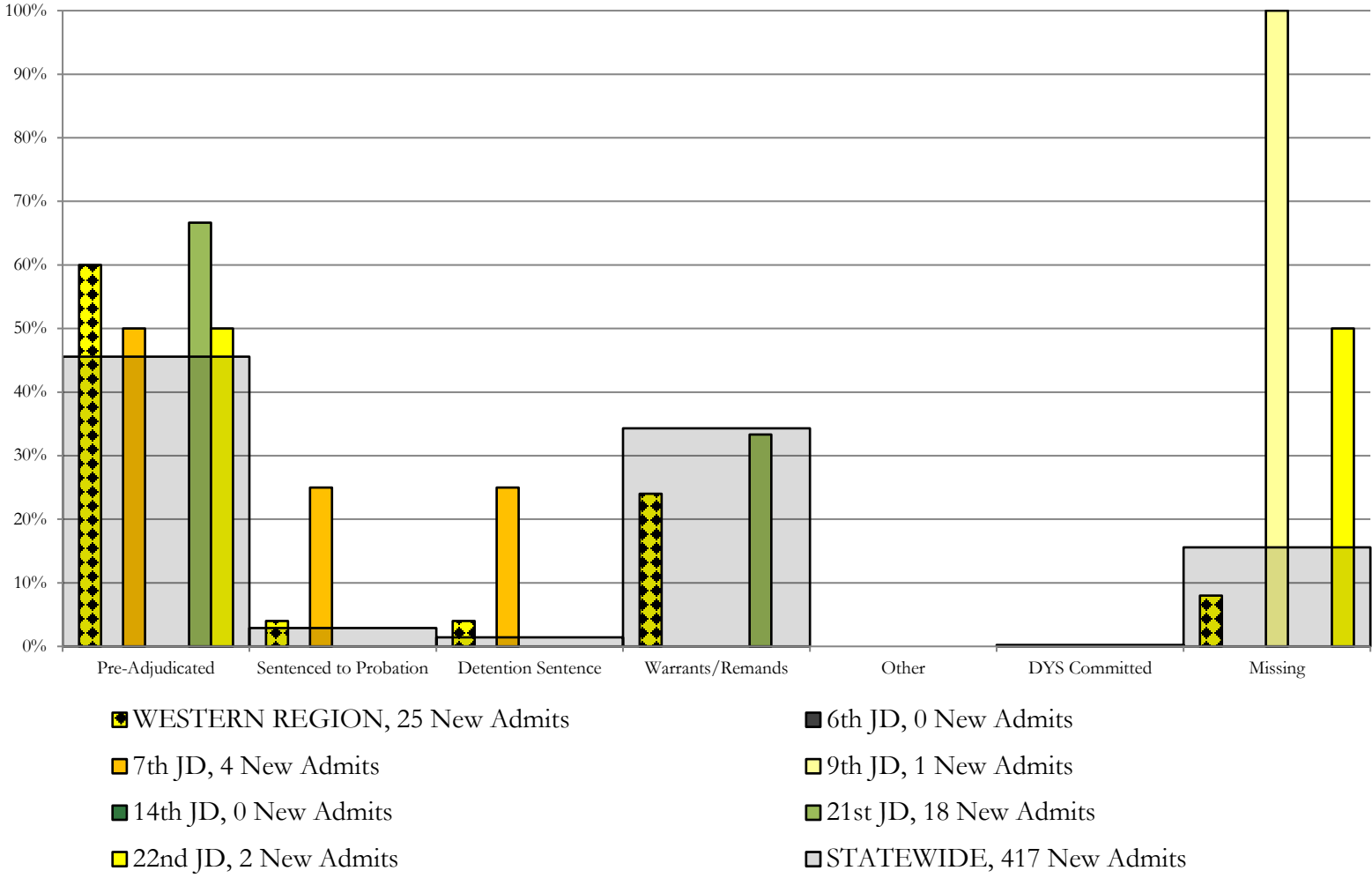




# Western Region

## CYDC Reason Detained by Judicial District

### October 2019 New Admits



# October 2019 CYDC Supplemental Report

## DYS Detention Maximum Youth Served by Judicial District<sup>1</sup>

Region	JD	Detention Capacity	Detention ADP		Maximum Youth Served on a Single Day <sup>2,3</sup>			
			October 2019	YTD	October 2019		YTD	
					Number of Youth	% of Detention Capacity	Number of Youth	% of Detention Capacity
<i>Central</i>								
	1st	35	26.7	18.3	34	97.1%	34	97.1%
	2nd	49	45.1	40.2	51	104.1%	52	106.1%
	5th	4	0.6	0.7	2	50.0%	2	50.0%
	18th	48	52.0	49.1	59	122.9%	59	122.9%
<b>Central Region</b>		<b>136</b>	<b>124.3</b>	<b>108.3</b>	<b>136</b>	<b>100.0%</b>	<b>136</b>	<b>100.0%</b>
<i>Northeast</i>								
	8th	14	11.4	13.0	15	107.1%	19	135.7%
	13th	5	2.2	2.0	4	80.0%	5	100.0%
	17th	28	27.0	24.3	31	110.7%	31	110.7%
	19th	18	7.2	10.2	12	66.7%	20	111.1%
	20th	8	6.2	5.4	8	100.0%	8	100.0%
<b>Northeast Region</b>		<b>73</b>	<b>53.9</b>	<b>54.9</b>	<b>59</b>	<b>80.8%</b>	<b>65</b>	<b>89.0%</b>
<i>Southern</i>								
	3rd	2	3.4	2.7	4	200.0%	6	300.0%
	4th	54	49.4	48.7	55	101.9%	61	113.0%
	10th	14	5.5	3.7	8	57.1%	8	57.1%
	11th	3	1.4	1.5	3	100.0%	5	166.7%
	12th	4	2.1	1.4	5	125.0%	5	125.0%
	15th	2	0.1	0.2	1	50.0%	2	100.0%
	16th	3	1.0	0.7	2	66.7%	2	66.7%
<b>Southern Region</b>		<b>82</b>	<b>62.9</b>	<b>59.0</b>	<b>70</b>	<b>85.4%</b>	<b>70</b>	<b>85.4%</b>
<i>Western</i>								
	6th	5	0.0	0.2	0	0.0%	1	20.0%
	7th	5	0.2	0.9	2	40.0%	4	80.0%
	9th	3	1.3	1.4	2	66.7%	4	133.3%
	14th	3	1.3	1.1	3	100.0%	3	100.0%
	21st	16	9.8	9.1	14	87.5%	15	93.8%
	22nd	4	0.5	1.1	1	25.0%	5	125.0%
<b>Western Region</b>		<b>36</b>	<b>13.1</b>	<b>13.8</b>	<b>17</b>	<b>47.2%</b>	<b>24</b>	<b>66.7%</b>
<i>Missing JD or Multiple JDs</i>			1.3	1.1				
<b>Statewide</b>		<b>327</b>	<b>255.5</b>	<b>237.0</b>	<b>268</b>	<b>82.0%</b>	<b>268</b>	<b>82.0%</b>

<sup>1</sup> Maximum youth served is the highest number of youth in detention on a single day during the month or fiscal year.

<sup>2</sup> Regional figures are not the sum of judicial districts, but represent the maximum count on one day for the entire region.

<sup>3</sup> State figures are not the sum of regional figures, but represent the maximum count on one day for the entire state.

## October 2019 CYDC Supplemental Report

### CYDC Community ADP by Judicial District

Region	JD	Committed		Diversion		ICJ		Municipal		Pre-Adjudicated		Sentenced		VCO		Total	
		October 2019	YTD	October 2019	YTD	October 2019	YTD	October 2019	YTD	October 2019	YTD	October 2019	YTD	October 2019	YTD	October 2019	YTD
<i>Central</i>																	
	1st	2.8	2.2	3.0	3.9	0.0	0.1	29.7	27.1	189.7	173.3	48.5	40.8	0.0	0.0	273.7	247.3
	2nd	3.5	3.5	1.0	0.6	0.0	0.3	0.0	0.0	144.2	139.6	37.8	41.2	0.0	0.0	186.5	185.2
	5th	0.0	0.0	11.0	11.4	0.0	0.0	0.0	0.0	16.9	16.2	34.0	34.3	0.0	0.0	61.9	61.9
	18th	1.6	3.5	0.0	0.2	0.0	0.0	2.0	1.8	294.5	287.5	35.8	31.8	0.0	0.0	333.9	324.9
<b>Central Total</b>		<b>7.8</b>	<b>9.3</b>	<b>15.0</b>	<b>16.1</b>	<b>0.0</b>	<b>0.4</b>	<b>31.7</b>	<b>28.9</b>	<b>645.3</b>	<b>616.6</b>	<b>156.1</b>	<b>148.1</b>	<b>0.0</b>	<b>0.0</b>	<b>855.9</b>	<b>819.4</b>
<i>Northeast</i>																	
	8th	0.0	0.0	13.0	11.3	0.0	0.0	0.0	0.0	92.9	80.1	61.0	58.9	0.0	0.0	166.9	150.3
	13th	0.0	0.0	0.0	0.0	0.0	0.0	1.0	0.5	16.2	17.4	2.1	1.6	1.0	1.0	20.3	20.5
	17th	1.9	1.2	1.0	0.7	0.0	0.0	0.0	0.0	337.5	330.1	102.7	100.2	0.0	0.0	443.1	432.1
	19th	0.1	0.2	0.0	0.1	0.0	0.0	5.0	4.9	72.9	73.5	30.0	32.4	1.0	1.0	108.9	112.2
	20th	0.0	0.4	70.9	70.1	1.0	1.0	1.0	1.0	131.2	115.8	17.0	16.9	2.0	2.0	223.1	207.3
<b>Northeast Total</b>		<b>2.0</b>	<b>1.9</b>	<b>84.9</b>	<b>82.2</b>	<b>1.0</b>	<b>1.0</b>	<b>7.0</b>	<b>6.5</b>	<b>650.8</b>	<b>616.9</b>	<b>212.8</b>	<b>210.0</b>	<b>4.0</b>	<b>4.0</b>	<b>962.4</b>	<b>922.5</b>
<i>Southern</i>																	
	3rd	0.0	0.0	0.0	0.0	0.0	0.0	0.0	0.0	20.7	18.0	3.2	3.2	0.0	0.0	23.9	21.1
	4th	0.4	0.9	0.0	0.0	0.0	0.0	29.0	29.1	188.0	154.1	50.6	44.2	0.0	0.0	267.9	228.3
	10th	0.0	0.0	0.0	0.0	0.0	0.0	1.0	1.0	14.6	12.3	4.6	4.0	0.6	0.2	20.8	17.5
	11th	1.0	1.0	0.0	0.0	0.0	0.0	6.5	6.1	25.2	20.7	26.3	25.3	1.0	1.0	59.9	54.1
	12th	0.0	0.0	2.6	2.6	0.0	0.0	1.2	1.1	6.4	6.4	1.2	1.1	0.0	0.0	11.4	11.1
	15th	0.0	0.0	2.0	2.5	0.0	0.0	0.0	0.0	3.1	2.8	6.7	7.7	0.0	0.0	11.7	12.9
	16th	0.0	0.0	0.0	0.0	0.0	0.0	0.0	0.0	3.0	2.9	1.0	0.3	20.0	20.5	24.0	23.8
<b>Southern Total</b>		<b>1.4</b>	<b>1.9</b>	<b>4.6</b>	<b>5.0</b>	<b>0.0</b>	<b>0.0</b>	<b>37.8</b>	<b>37.3</b>	<b>260.9</b>	<b>217.1</b>	<b>93.6</b>	<b>85.8</b>	<b>21.6</b>	<b>21.7</b>	<b>419.8</b>	<b>368.8</b>
<i>Western</i>																	
	6th	0.0	0.0	0.0	0.0	0.0	0.0	1.0	0.3	1.6	4.3	0.0	0.0	0.0	0.0	2.6	4.7
	7th	0.0	0.0	11.0	13.8	0.0	0.0	1.2	0.6	9.8	9.3	2.8	3.8	0.0	0.0	24.8	27.6
	9th	0.0	0.0	0.0	0.0	0.0	0.0	2.1	0.5	13.9	10.9	0.0	0.2	0.0	0.0	16.0	11.6
	14th	0.0	0.0	8.0	9.9	0.0	0.0	0.0	0.0	7.4	5.8	0.0	0.0	0.0	0.0	15.5	15.7
	21st	0.0	0.0	0.0	0.0	0.0	0.0	0.0	0.0	75.6	68.8	23.1	23.4	0.0	0.0	98.7	92.1
	22nd	0.0	0.0	0.0	0.0	0.0	0.0	0.0	0.0	2.8	2.5	9.7	12.7	0.0	0.0	12.4	15.2
<b>Western Total</b>		<b>0.0</b>	<b>0.0</b>	<b>19.0</b>	<b>23.8</b>	<b>0.0</b>	<b>0.0</b>	<b>4.3</b>	<b>1.5</b>	<b>111.0</b>	<b>101.6</b>	<b>35.5</b>	<b>40.0</b>	<b>0.0</b>	<b>0.0</b>	<b>169.9</b>	<b>166.9</b>
<b>Statewide Total</b>		<b>11.2</b>	<b>13.0</b>	<b>123.5</b>	<b>127.1</b>	<b>1.0</b>	<b>1.4</b>	<b>80.8</b>	<b>74.2</b>	<b>1668.0</b>	<b>1552.2</b>	<b>498.1</b>	<b>484.0</b>	<b>25.6</b>	<b>25.7</b>	<b>2408.0</b>	<b>2277.6</b>