

September 2019 FY 2019-2020 CYDC JDSAG SUPPLEMENTAL REPORT

Prepared by the Division of Youth Services (DYS)

Data Management & Analysis

October 23, 2019



COLORADO

Division of Youth Services

Office of Children, Youth & Families

September 2019 CYDC Supplemental Report

DYS Commitment ADP & New Commitments by Judicial District

Region	JD ¹	2020 Population Estimates ²	ADP ³		New Commitments		
			September 2019	YTD	September 2019	YTD	YTD Rate ⁴
<i>Central</i>							
	1st	54,722	78.4	81.5	0	3	0.5
	2nd	57,309	73.9	72.5	3	9	1.6
	5th	9,320	4.0	4.4	0	0	0.0
	18th	115,605	77.4	81.0	3	7	0.6
Central Total		236,956	233.7	239.2	6	19	0.8
<i>Northeast</i>							
	8th	34,597	19.1	19.0	1	3	0.9
	13th	8,496	2.0	2.5	0	0	0.0
	17th	69,940	49.4	49.2	1	5	0.7
	19th	38,548	36.3	37.3	2	7	1.8
	20th	31,121	4.0	3.8	0	1	0.3
Northeast Total		182,702	110.9	111.8	4	16	0.9
<i>Southern</i>							
	3rd	1,817	3.0	3.0	0	0	0.0
	4th	83,065	68.0	69.6	3	9	1.1
	10th	18,110	10.7	12.0	0	2	1.1
	11th	7,264	2.7	3.2	0	1	1.4
	12th	5,399	5.8	4.9	0	3	5.6
	15th	2,125	3.0	3.0	0	0	0.0
	16th	2,762	2.0	1.4	0	0	0.0
Southern Total		120,542	95.2	97.0	3	15	1.2
<i>Western</i>							
	6th	7,285	3.3	3.8	0	0	0.0
	7th	10,595	7.2	6.2	1	4	3.8
	9th	8,578	5.0	4.9	0	0	0.0
	14th	5,752	0.0	0.0	0	0	0.0
	21st	16,322	34.9	35.9	1	5	3.1
	22nd	3,063	7.0	5.8	0	4	13.1
Western Total		51,595	57.5	56.5	2	13	2.5
Statewide Total		591,795	497.2	504.5	15	63	1.1

¹ JD represents the judicial district in which the client was committed. Regional totals are a sum of their respective judicial districts. Regional totals reported here may differ slightly from those reported in the Monthly Population Report, where region is defined by active caseloads.

² Source: DOLA 2020 Estimates.

³ Due to rounding, totals shown may not be an exact sum of the subtotals.

⁴ Per 10,000 youth in the population.

September 2019 CYDC Supplemental Report

DYS Detention ADP and New Detention Admissions by Judicial District

Region	JD	2020 Population Estimates ¹	ADP		New Admits		
			September 2019	YTD	September 2019	YTD	YTD New Admit Rate ²
<i>Central</i>							
	1st	54,722	18.9	15.5	39	104	19.0
	2nd	57,309	43.0	38.5	65	190	33.2
	5th	9,320	1.0	0.8	1	3	3.2
	18th	115,605	49.3	48.1	62	205	17.7
Central Total		236,956	112.2	102.9	167	502	21.2
<i>Northeast</i>							
	8th	34,597	12.2	13.6	18	67	19.4
	13th	8,496	1.4	2.0	3	14	16.5
	17th	69,940	21.9	23.3	35	103	14.7
	19th	38,548	13.1	11.1	29	78	20.2
	20th	31,121	2.8	5.1	9	24	7.7
Northeast Total		182,702	51.4	55.2	94	286	15.7
<i>Southern</i>							
	3rd	1,817	2.2	2.5	3	7	38.5
	4th	83,065	51.8	48.5	64	206	24.8
	10th	18,110	3.8	3.1	13	34	18.8
	11th	7,264	1.4	1.5	3	13	17.9
	12th	5,399	1.8	1.2	2	6	11.1
	15th	2,125	0.2	0.3	2	3	14.1
	16th	2,762	1.0	0.6	1	3	10.9
Southern Total		120,542	62.3	57.7	88	272	22.6
<i>Western</i>							
	6th	7,285	0.3	0.3	2	3	4.1
	7th	10,595	0.0	1.1	1	5	4.7
	9th	8,578	0.6	1.5	2	10	11.7
	14th	5,752	2.2	1.0	2	5	8.7
	21st	16,322	9.9	8.9	28	65	39.8
	22nd	3,063	0.0	1.4	0	5	16.3
Western Total		51,595	13.1	14.1	35	93	18.0
<i>Missing JD or Multiple JDs</i>			<i>0.3</i>	<i>1.0</i>			
Statewide Total		591,795	239.3	230.8	384	1,153	19.5

¹ Source: DOLA 2020 Estimates.

² Per 10,000 youth in the population.

September 2019 CYDC Supplemental Report

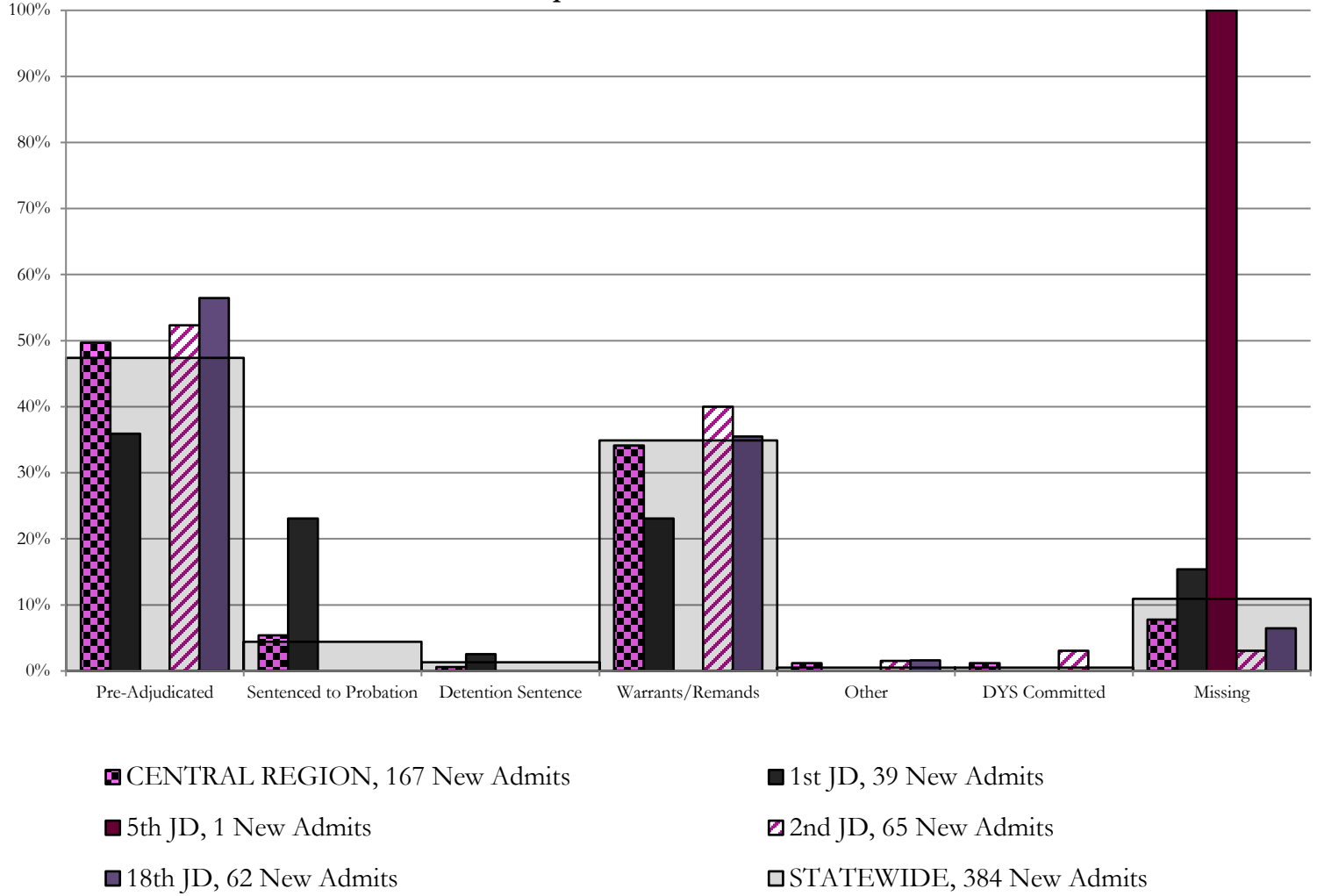
DYS Detention LOS by Judicial District				
Region	JD	YTD Detention Releases	YTD LOS (days)	LOS (days) Compared to State AVG
<i>Central</i>				
	1st	92	11.6	-4.8
	2nd	180	14.0	-2.5
	5th	3	13.8	-2.7
	18th	198	18.6	2.1
Central Total		473	15.5	-1.0
<i>Northeast</i>				
	8th	71	13.3	-3.2
	13th	17	9.7	-6.7
	17th	104	14.3	-2.2
	19th	76	11.4	-5.0
	20th	26	22.8	6.3
Northeast Total		294	13.8	-2.7
<i>Southern</i>				
	3rd	10	4.9	-11.5
	4th	190	20.0	3.5
	10th	33	5.9	-10.5
	11th	14	11.4	-5.0
	12th	5	19.3	2.9
	15th	3	7.4	-9.1
	16th	2	2.0	-14.4
Southern Total		257	16.8	0.4
<i>Western</i>				
	6th	4	5.6	-10.9
	7th	7	14.0	-2.5
	9th	11	24.3	7.8
	14th	2	1.0	-15.5
	21st	55	8.9	-7.6
	22nd	3	27.5	11.0
Western Total		82	11.7	-4.8
Statewide Total		1,107	16.5	-

September 2019 CDYC Supplemental Report

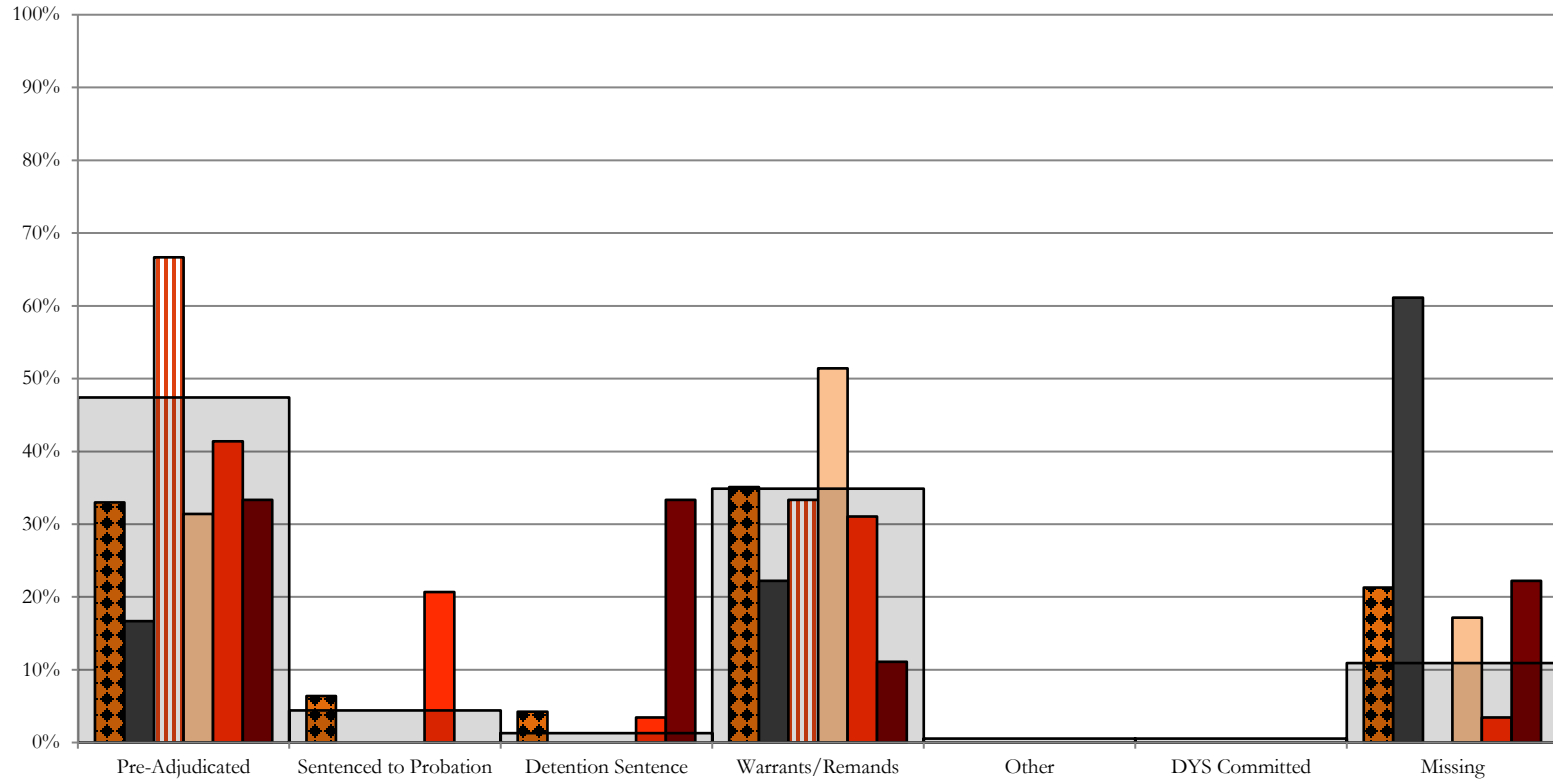
CYDC Reason Detained (RD) by Judicial District

Region	JD	Monthly New Admits	Pre-Adjudicated				Sentenced to Probation				Detention Sentence								Warrants/Remands				Other						DYS Committed		Missing							
			Felony		Misdemeanor		Technical Violator		New Charges		Probation Sentence		Detention Sentence		Valid Court Order (VCO) Truancy		Awaiting DSS (Social Services) Placement		Failure to Appear (FTA)		Failure to Comply (FTC)		Interstate Compact on Juveniles (ICJ) Hold		Immigration Hold		No Bond Hold		Out-of-Country Warrant		Institutional		Parole		Missing			
			#	%	#	%	#	%	#	%	#	%	#	%	#	%	#	%	#	%	#	%	#	%	#	%	#	%	#	%	#	%	#	%	#	%		
Central																																						
	1st	39	7	17.9%	7	17.9%	9	23.1%	0	0.0%	0	0.0%	1	2.6%	0	0.0%	0	0.0%	2	5.1%	7	17.9%	0	0.0%	0	0.0%	0	0.0%	0	0.0%	0	0.0%	0	0.0%	0	0.0%	6	15.4%
	2nd	65	25	38.5%	9	13.8%	0	0.0%	0	0.0%	0	0.0%	0	0.0%	0	0.0%	0	0.0%	9	13.8%	17	26.2%	1	1.5%	0	0.0%	0	0.0%	0	0.0%	0	0.0%	1	1.5%	1	1.5%	2	3.1%
	5th	1	0	0.0%	0	0.0%	0	0.0%	0	0.0%	0	0.0%	0	0.0%	0	0.0%	0	0.0%	0	0.0%	0	0.0%	0	0.0%	0	0.0%	0	0.0%	0	0.0%	0	0.0%	0	0.0%	0	0.0%	1	100.0%
	18th	62	26	41.9%	9	14.5%	0	0.0%	0	0.0%	0	0.0%	0	0.0%	0	0.0%	0	0.0%	6	9.7%	16	25.8%	1	1.6%	0	0.0%	0	0.0%	0	0.0%	0	0.0%	0	0.0%	0	0.0%	4	6.5%
Central Total		167	58	35%	25	15%	9	5.4%	0	0.0%	0	0.0%	1	0.6%	0	0.0%	0	0.0%	17	10%	40	24%	2	1.2%	0	0.0%	0	0.0%	0	0.0%	0	0.0%	1	0.6%	1	0.6%	13	7.8%
Northeast																																						
	8th	18	2	11.1%	1	5.6%	0	0.0%	0	0.0%	0	0.0%	0	0.0%	0	0.0%	0	0.0%	4	22.2%	0	0.0%	0	0.0%	0	0.0%	0	0.0%	0	0.0%	0	0.0%	0	0.0%	0	0.0%	11	61.1%
	13th	3	2	66.7%	0	0.0%	0	0.0%	0	0.0%	0	0.0%	0	0.0%	0	0.0%	0	0.0%	1	33.3%	0	0.0%	0	0.0%	0	0.0%	0	0.0%	0	0.0%	0	0.0%	0	0.0%	0	0.0%	0	0.0%
	17th	35	8	22.9%	3	8.6%	0	0.0%	0	0.0%	0	0.0%	0	0.0%	0	0.0%	0	0.0%	2	5.7%	16	45.7%	0	0.0%	0	0.0%	0	0.0%	0	0.0%	0	0.0%	0	0.0%	0	0.0%	6	17.1%
	19th	29	7	24.1%	5	17.2%	6	20.7%	0	0.0%	0	0.0%	1	3.4%	0	0.0%	0	0.0%	9	31.0%	0	0.0%	0	0.0%	0	0.0%	0	0.0%	0	0.0%	0	0.0%	0	0.0%	0	0.0%	1	3.4%
	20th	9	3	33.3%	0	0.0%	0	0.0%	0	0.0%	0	0.0%	1	11.1%	0	0.0%	2	22.2%	0	0.0%	1	11.1%	0	0.0%	0	0.0%	0	0.0%	0	0.0%	0	0.0%	0	0.0%	0	0.0%	2	22.2%
Northeast Total		94	22	23%	9	10%	6	6.4%	0	0.0%	0	0.0%	2	2.1%	0	0.0%	2	2.1%	2	2.1%	31	33%	0	0.0%	0	0.0%	0	0.0%	0	0.0%	0	0.0%	0	0.0%	0	0.0%	20	21%
Southern																																						
	3rd	3	3	100.0%	0	0.0%	0	0.0%	0	0.0%	0	0.0%	0	0.0%	0	0.0%	0	0.0%	0	0.0%	0	0.0%	0	0.0%	0	0.0%	0	0.0%	0	0.0%	0	0.0%	0	0.0%	0	0.0%	0	0.0%
	4th	64	30	46.9%	11	17.2%	0	0.0%	1	1.6%	0	0.0%	0	0.0%	0	0.0%	0	0.0%	6	9.4%	15	23.4%	0	0.0%	0	0.0%	0	0.0%	0	0.0%	0	0.0%	0	0.0%	0	0.0%	1	1.6%
	10th	13	6	46.2%	0	0.0%	0	0.0%	0	0.0%	0	0.0%	0	0.0%	0	0.0%	0	0.0%	2	15.4%	5	38.5%	0	0.0%	0	0.0%	0	0.0%	0	0.0%	0	0.0%	0	0.0%	0	0.0%	0	0.0%
	11th	3	1	33.3%	1	33.3%	0	0.0%	0	0.0%	0	0.0%	0	0.0%	0	0.0%	0	0.0%	0	0.0%	0	0.0%	0	0.0%	0	0.0%	0	0.0%	0	0.0%	0	0.0%	0	0.0%	0	0.0%	1	33.3%
	12th	2	1	50.0%	0	0.0%	0	0.0%	0	0.0%	0	0.0%	0	0.0%	0	0.0%	0	0.0%	1	50.0%	0	0.0%	0	0.0%	0	0.0%	0	0.0%	0	0.0%	0	0.0%	0	0.0%	0	0.0%	0	0.0%
	15th	2	0	0.0%	0	0.0%	0	0.0%	0	0.0%	0	0.0%	0	0.0%	0	0.0%	0	0.0%	0	0.0%	0	0.0%	0	0.0%	0	0.0%	0	0.0%	0	0.0%	0	0.0%	0	0.0%	0	0.0%	2	100.0%
	16th	1	0	0.0%	0	0.0%	1	100.0%	0	0.0%	0	0.0%	0	0.0%	0	0.0%	0	0.0%	0	0.0%	0	0.0%	0	0.0%	0	0.0%	0	0.0%	0	0.0%	0	0.0%	0	0.0%	0	0.0%	0	0.0%
Southern Total		88	41	47%	12	14%	1	1.1%	1	1.1%	0	0.0%	0	0.0%	0	0.0%	0	0.0%	9	10%	20	23%	0	0.0%	0	0.0%	0	0.0%	0	0.0%	0	0.0%	0	0.0%	0	0.0%	4	5%
Western																																						
	6th	2	1	50.0%	0	0.0%	0	0.0%	0	0.0%	0	0.0%	0	0.0%	0	0.0%	0	0.0%	0	0.0%	0	0.0%	0	0.0%	0	0.0%	0	0.0%	0	0.0%	0	0.0%	0	0.0%	0	0.0%	1	50%
	7th	1	1	100.0%	0	0.0%	0	0.0%	0	0.0%	0	0.0%	0	0.0%	0	0.0%	0	0.0%	0	0.0%	0	0.0%	0	0.0%	0	0.0%	0	0.0%	0	0.0%	0	0.0%	0	0.0%	0	0.0%	0	0%
	9th	2	0	0.0%	0	0.0%	0	0.0%	0	0.0%	0	0.0%	0	0.0%	0	0.0%	0	0.0%	0	0.0%	0	0.0%	0	0.0%	0	0.0%	0	0.0%	0	0.0%	0	0.0%	0	0.0%	0	0.0%	2	100%
	14th	2	1	50.0%	0	0.0%	0	0.0%	0	0.0%	0	0.0%	0	0.0%	0	0.0%	0	0.0%	0	0.0%	0	0.0%	0	0.0%	0	0.0%	0	0.0%	0	0.0%	0	0.0%	0	0.0%	0	0.0%	1	50%
	21st	28	8	28.6%	4	14.3%	0	0.0%	0	0.0%	0	0.0%	0	0.0%	0	0.0%	0	0.0%	2	7.1%	13	46.4%	0	0.0%	0	0.0%	0	0.0%	0	0.0%	0	0.0%	0	0.0%	0	0.0%	1	4%
	22nd	0	0	0.0%	0	0.0%	0	0.0%	0	0.0%	0	0.0%	0	0.0%	0	0.0%	0	0.0%	0	0.0%	0	0.0%	0	0.0%	0	0.0%	0	0.0%	0	0.0%	0	0.0%	0	0.0%	0	0.0%	0	0%
Western Total		35	11	31%	4	11.4%	0	0.0%	0	0.0%	0	0.0%	0	0.0%	0	0.0%	0	0.0%	2	5.7%	13	37%	0	0.0%	0	0.0%	0	0.0%	0	0.0%	0	0.0%	0	0.0%	0	0.0%	5	14%
Individual RD Totals		384	132	34%	50	13%	16	4.2%	1	0.3%	0	0.0%	3	0.8%	0	0.0%	2	0.5%	30	8%	104	27%	2	0.5%	0	0.0%	0	0.0%	0	0.0%	0	0.0%	1	0.3%	1	0.3%	42	11%
Statewide Totals		384	182	47.4%	17	4.4%	5	1.3%	134	34.9%	2	0.5%	42	11%																								

Central Region CYDC Reason Detained by Judicial District September 2019 New Admits



Northeast Region CYDC Reason Detained by Judicial District September 2019 New Admits



■ NORTHEAST REGION, 94 New Admits

■ 8th JD, 18 New Admits

■ 13th JD, 3 New Admits

■ 17th JD, 35 New Admits

■ 19th JD, 29 New Admits

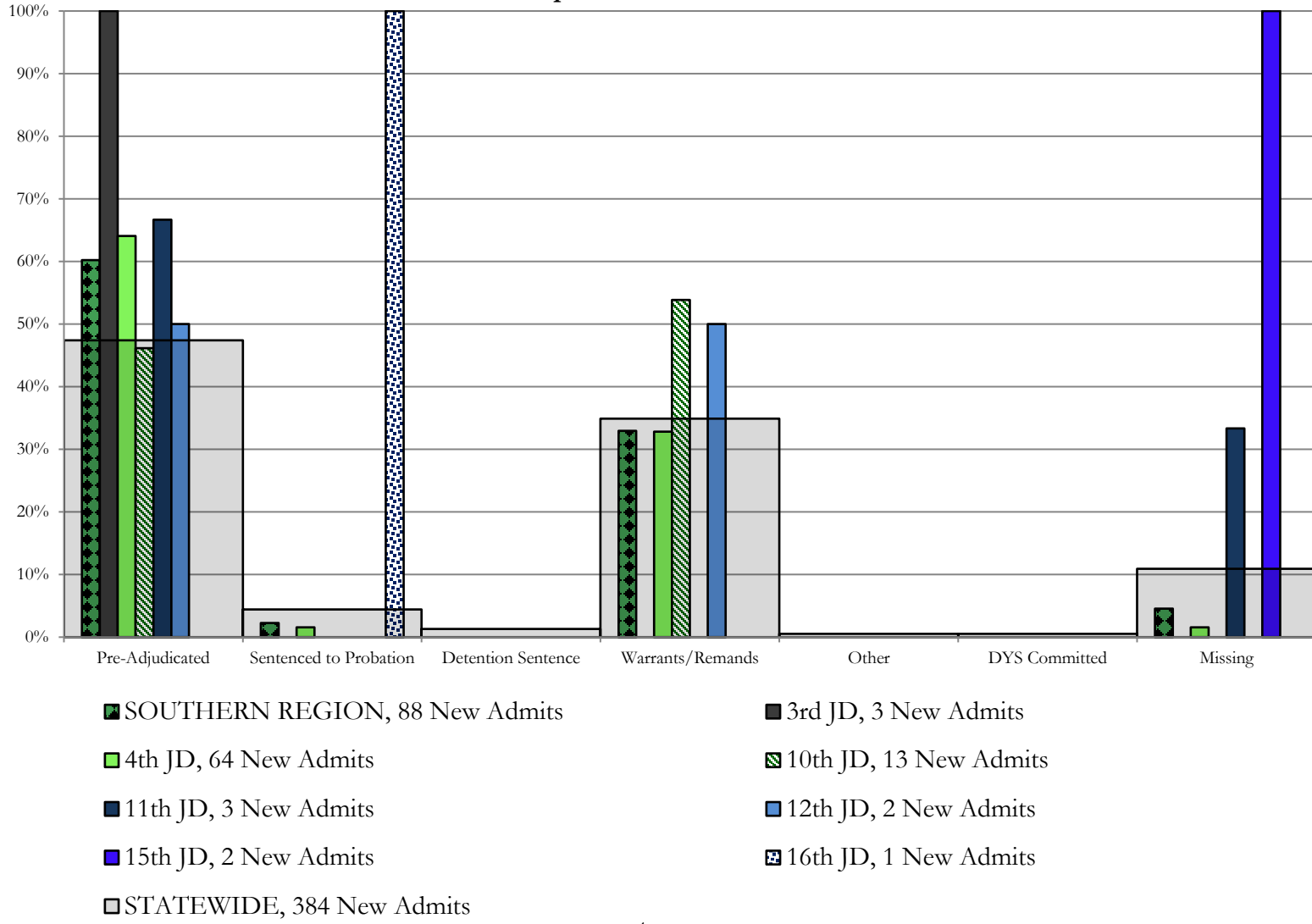
■ 20th JD, 9 New Admits

■ STATEWIDE, 384 New Admits

Southern Region

CYDC Reason Detained by Judicial District

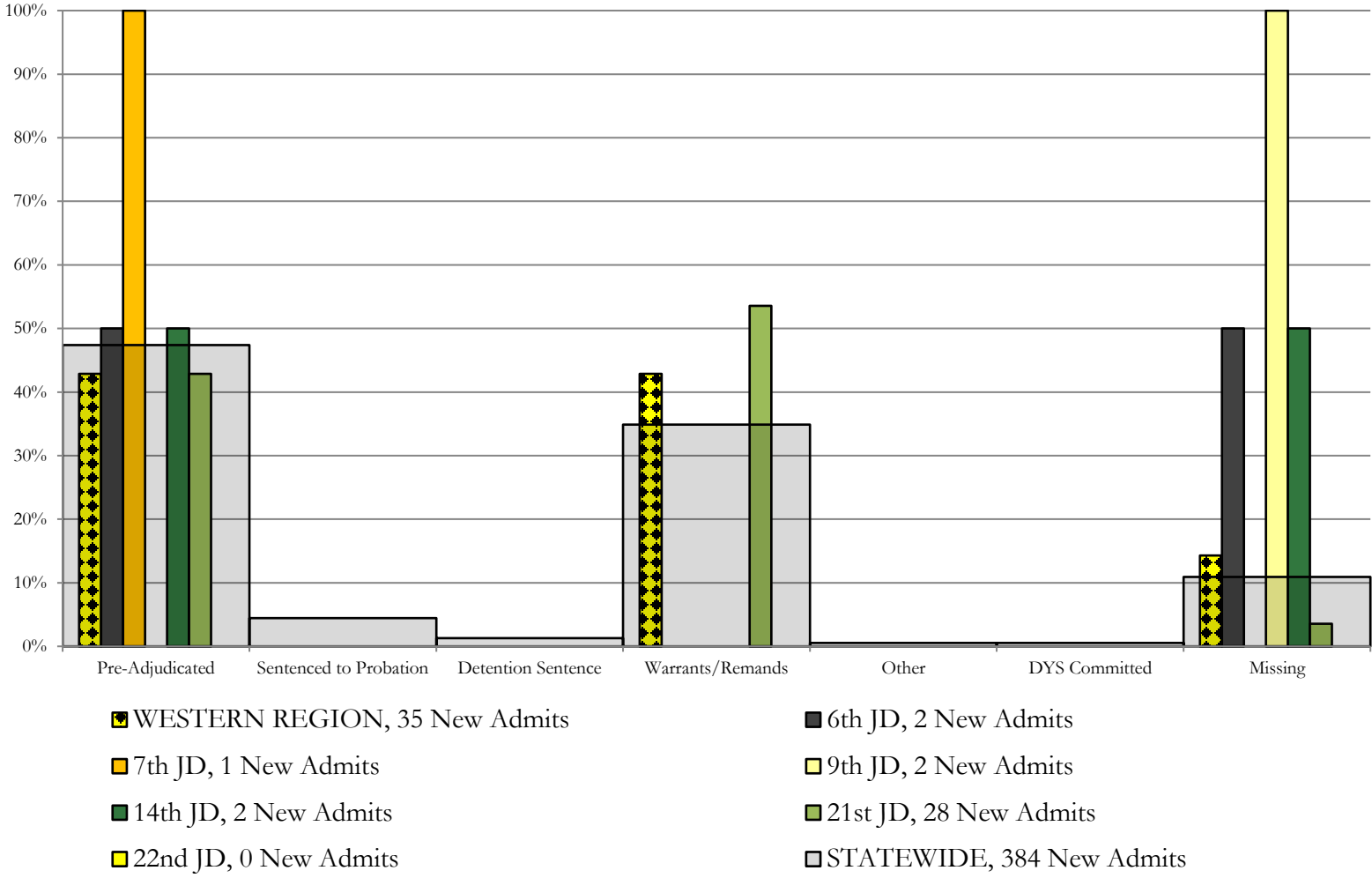
September 2019 New Admits



Western Region

CYDC Reason Detained by Judicial District

September 2019 New Admits



September 2019 CYDC Supplemental Report

DYS Detention Maximum Youth Served by Judicial District¹

Region	JD	Detention Capacity	Detention ADP		Maximum Youth Served on a Single Day ^{2,3}			
			September 2019	YTD	September 2019		YTD	
					Number of Youth	% of Detention Capacity	Number of Youth	% of Detention Capacity
<i>Central</i>								
	1st	35	18.9	15.5	25	71.4%	25	71.4%
	2nd	49	43.0	38.5	52	106.1%	52	106.1%
	5th	4	1.0	0.8	2	50.0%	2	50.0%
	18th	48	49.3	48.1	58	120.8%	58	120.8%
Central Region		136	112.2	102.9	128	94.1%	128	94.1%
<i>Northeast</i>								
	8th	14	12.2	13.6	17	121.4%	19	135.7%
	13th	5	1.4	2.0	3	60.0%	5	100.0%
	17th	28	21.9	23.3	29	103.6%	29	103.6%
	19th	18	13.1	11.1	20	111.1%	20	111.1%
	20th	8	2.8	5.1	6	75.0%	8	100.0%
Northeast Region		73	51.4	55.2	65	89.0%	65	89.0%
<i>Southern</i>								
	3rd	2	2.2	2.5	4	200.0%	6	300.0%
	4th	54	51.8	48.5	57	105.6%	61	113.0%
	10th	14	3.8	3.1	7	50.0%	7	50.0%
	11th	3	1.4	1.5	3	100.0%	5	166.7%
	12th	4	1.8	1.2	2	50.0%	3	75.0%
	15th	2	0.2	0.3	2	100.0%	2	100.0%
	16th	3	1.0	0.6	2	66.7%	2	66.7%
Southern Region		82	62.3	57.7	67	81.7%	69	84.1%
<i>Western</i>								
	6th	5	0.3	0.3	1	20.0%	1	20.0%
	7th	5	0.0	1.1	1	20.0%	4	80.0%
	9th	3	0.6	1.5	2	66.7%	4	133.3%
	14th	3	2.2	1.0	3	100.0%	3	100.0%
	21st	16	9.9	8.9	15	93.8%	15	93.8%
	22nd	4	0.0	1.4	0	0.0%	5	125.0%
Western Region		36	13.1	14.1	18	50.0%	24	66.7%
<i>Missing JD or Multiple JDs</i>			0.3	1.0				
Statewide		327	239.3	230.8	268	82.0%	268	82.0%

¹ Maximum youth served is the highest number of youth in detention on a single day during the month or fiscal year.

² Regional figures are not the sum of judicial districts, but represent the maximum count on one day for the entire region.

³ State figures are not the sum of regional figures, but represent the maximum count on one day for the entire state.

September 2019 CYDC Supplemental Report

CYDC Community ADP by Judicial District

Region	JD	Committed		Diversion		ICJ		Municipal		Pre-Adjudicated		Sentenced		VCO		Total	
		September 2019	YTD	September 2019	YTD	September 2019	YTD	September 2019	YTD	September 2019	YTD	September 2019	YTD	September 2019	YTD	September 2019	YTD
<i>Central</i>																	
	1st	2.0	2.0	3.4	4.2	0.0	0.1	32.1	25.8	184.7	167.6	34.9	34.1	0.0	0.0	257.1	233.9
	2nd	4.4	3.6	1.0	0.4	0.0	0.4	0.0	0.0	145.7	142.4	60.5	58.3	0.0	0.0	211.6	205.1
	5th	0.0	0.0	11.0	11.5	0.0	0.0	0.0	0.0	16.0	16.0	32.0	32.4	0.0	0.0	59.0	59.9
	18th	3.5	4.2	0.0	0.3	0.2	0.1	2.0	1.7	280.9	290.3	34.0	32.5	0.0	0.0	320.6	329.1
Central Total		9.9	9.8	15.4	16.5	0.2	0.5	34.1	27.6	627.3	616.4	161.4	157.3	0.0	0.0	848.3	828.0
<i>Northeast</i>																	
	8th	0.0	0.0	11.8	10.7	0.0	0.0	0.0	0.0	81.7	75.4	59.3	58.1	0.0	0.0	152.7	144.2
	13th	0.0	0.0	0.0	0.0	0.0	0.0	1.0	0.4	16.2	17.9	2.9	2.1	1.0	1.0	21.2	21.4
	17th	1.0	1.0	1.0	0.6	0.0	0.0	0.0	0.0	345.8	347.0	104.1	102.6	0.0	0.0	451.9	451.1
	19th	0.5	0.3	0.0	0.1	0.0	0.0	5.0	4.9	70.8	74.4	31.7	33.4	1.0	1.0	109.0	114.1
	20th	0.0	0.6	70.0	69.9	1.0	1.0	1.0	1.0	118.8	110.6	17.0	16.9	2.0	2.0	209.8	202.0
Northeast Total		1.5	1.9	82.8	81.3	1.0	1.0	7.0	6.3	633.3	625.3	215.1	213.1	4.0	3.9	944.6	932.8
<i>Southern</i>																	
	3rd	0.0	0.0	0.0	0.0	0.0	0.0	0.0	0.0	23.0	19.1	3.0	3.7	0.0	0.0	26.0	22.8
	4th	2.2	3.0	0.0	0.0	0.0	0.0	36.0	36.2	173.8	146.7	47.3	40.1	0.0	0.0	259.3	226.0
	10th	0.0	0.0	0.0	0.0	0.0	0.0	1.0	1.0	10.1	10.6	4.4	3.8	0.2	0.1	15.7	15.4
	11th	1.0	1.0	0.0	0.0	0.0	0.0	6.0	6.0	20.2	19.2	25.0	25.0	1.0	1.0	53.2	52.2
	12th	0.0	0.0	3.0	2.6	0.0	0.0	1.0	1.0	6.5	6.4	1.1	1.1	0.0	0.0	11.5	11.1
	15th	0.0	0.0	3.0	3.6	0.0	0.0	0.0	0.0	3.4	2.7	10.0	9.8	0.0	0.0	16.4	16.0
	16th	0.0	0.0	0.0	0.0	0.0	0.0	0.0	0.0	2.1	2.9	0.2	0.1	20.2	20.7	22.4	23.7
Southern Total		3.2	4.0	6.0	6.2	0.0	0.0	44.0	44.2	239.1	207.5	90.9	83.4	21.4	21.8	404.5	367.2
<i>Western</i>																	
	6th	0.0	0.0	0.0	0.0	0.0	0.0	0.0	0.0	2.7	5.3	0.0	0.0	0.0	0.0	2.7	5.3
	7th	0.0	0.0	17.9	18.2	0.0	0.0	0.4	0.4	9.0	9.2	3.0	4.1	0.0	0.0	30.3	32.0
	9th	0.0	0.0	0.0	0.0	0.0	0.0	0.0	0.0	10.7	9.5	0.0	0.3	0.0	0.0	10.7	9.8
	14th	0.0	0.0	7.7	10.6	0.0	0.0	0.0	0.0	7.1	5.2	0.0	0.0	0.0	0.0	14.8	15.8
	21st	0.0	0.0	0.0	0.0	0.0	0.0	0.0	0.0	69.5	66.3	23.0	23.0	0.0	0.0	92.5	89.4
	22nd	0.0	0.0	0.0	0.0	0.0	0.0	0.0	0.0	2.2	2.4	9.8	12.7	0.0	0.0	12.0	15.1
Western Total		0.0	0.0	25.6	28.8	0.0	0.0	0.4	0.4	101.1	97.9	35.8	40.1	0.0	0.0	163.0	167.3
Statewide Total		14.5	15.7	129.8	132.9	1.2	1.5	85.6	78.4	1600.7	1547.1	503.2	493.9	25.4	25.7	2360.4	2295.2