

August 2019 FY 2019-2020 CYDC JDSAG SUPPLEMENTAL REPORT

Prepared by the Division of Youth Services (DYS)
Data Management & Analysis
September 26, 2019



COLORADO
Division of Youth Services
Office of Children, Youth & Families

August 2019 CYDC Supplemental Report

DYS Commitment ADP & New Commitments by Judicial District

Region	JD ¹	2020 Population Estimates ²	ADP ³		New Commitments		
			August 2019	YTD	August 2019	YTD	YTD Rate ⁴
<i>Central</i>							
	1st	54,722	81.0	82.9	0	3	0.5
	2nd	57,309	70.5	71.6	3	5	0.9
	5th	9,320	4.0	4.5	0	0	0.0
	18th	115,605	80.2	82.7	2	4	0.3
Central Total		236,956	235.7	241.7	5	12	0.5
<i>Northeast</i>							
	8th	34,597	18.9	18.9	1	2	0.6
	13th	8,496	2.5	2.8	0	0	0.0
	17th	69,940	48.4	49.1	3	4	0.6
	19th	38,548	37.7	37.7	4	5	1.3
	20th	31,121	4.0	3.7	1	1	0.3
Northeast Total		182,702	111.4	112.2	9	12	0.7
<i>Southern</i>							
	3rd	1,817	3.0	3.0	0	0	0.0
	4th	83,065	69.0	70.4	3	6	0.7
	10th	18,110	12.2	12.6	1	2	1.1
	11th	7,264	3.0	3.4	0	1	1.4
	12th	5,399	5.0	4.4	0	2	3.7
	15th	2,125	3.0	3.0	0	0	0.0
	16th	2,762	1.1	1.0	0	0	0.0
Southern Total		120,542	96.3	97.8	4	11	0.9
<i>Western</i>							
	6th	7,285	4.0	4.0	0	0	0.0
	7th	10,595	5.6	5.7	1	2	1.9
	9th	8,578	5.0	4.8	0	0	0.0
	14th	5,752	0.0	0.0	0	0	0.0
	21st	16,322	36.9	36.7	1	4	2.5
	22nd	3,063	6.1	5.1	3	4	13.1
Western Total		51,595	57.5	56.4	5	10	1.9
Statewide Total		591,795	501.1	508.2	23	45	0.8

¹ JD represents the judicial district in which the client was committed. Regional totals are a sum of their respective judicial districts. Regional totals reported here may differ slightly from those reported in the Monthly Population Report, where region is defined by active caseloads.

² Source: DOLA 2020 Estimates.

³ Due to rounding, totals shown may not be an exact sum of the subtotals.

⁴ Per 10,000 youth in the population.

August 2019 CYDC Supplemental Report

DYS Detention ADP and New Detention Admissions by Judicial District

Region	JD	2020 Population Estimates ¹	ADP		New Admits		
			August 2019	YTD	August 2019	YTD	YTD New Admit Rate ²
<i>Central</i>							
	1st	54,722	13.7	13.9	38	65	11.9
	2nd	57,309	39.4	36.4	61	125	21.8
	5th	9,320	0.8	0.7	1	2	2.1
	18th	115,605	47.4	47.5	76	143	12.4
Central Total		236,956	101.3	98.4	176	335	14.1
<i>Northeast</i>							
	8th	34,597	15.5	14.3	21	49	14.2
	13th	8,496	1.3	2.2	5	11	12.9
	17th	69,940	23.7	24.0	32	68	9.7
	19th	38,548	10.5	10.2	19	49	12.7
	20th	31,121	6.0	6.2	7	15	4.8
Northeast Total		182,702	57.0	57.0	84	192	10.5
<i>Southern</i>							
	3rd	1,817	2.0	2.7	1	4	22.0
	4th	83,065	53.0	46.8	70	142	17.1
	10th	18,110	2.0	2.8	7	21	11.6
	11th	7,264	1.8	1.6	3	10	13.8
	12th	5,399	1.1	1.0	2	4	7.4
	15th	2,125	0.4	0.3	0	1	4.7
	16th	2,762	0.5	0.3	1	2	7.2
Southern Total		120,542	60.8	55.4	84	184	15.3
<i>Western</i>							
	6th	7,285	0.0	0.2	0	1	1.4
	7th	10,595	1.0	1.6	2	4	3.8
	9th	8,578	1.4	1.9	4	8	9.3
	14th	5,752	0.8	0.4	3	3	5.2
	21st	16,322	7.8	8.4	17	37	22.7
	22nd	3,063	1.2	2.0	1	5	16.3
Western Total		51,595	12.1	14.5	27	58	11.2
<i>Missing JD or Multiple JDs</i>			<i>1.2</i>	<i>1.3</i>			
Statewide Total		591,795	232.5	226.7	371	769	13.0

¹ Source: DOLA 2020 Estimates.

² Per 10,000 youth in the population.

August 2019 CYDC Supplemental Report

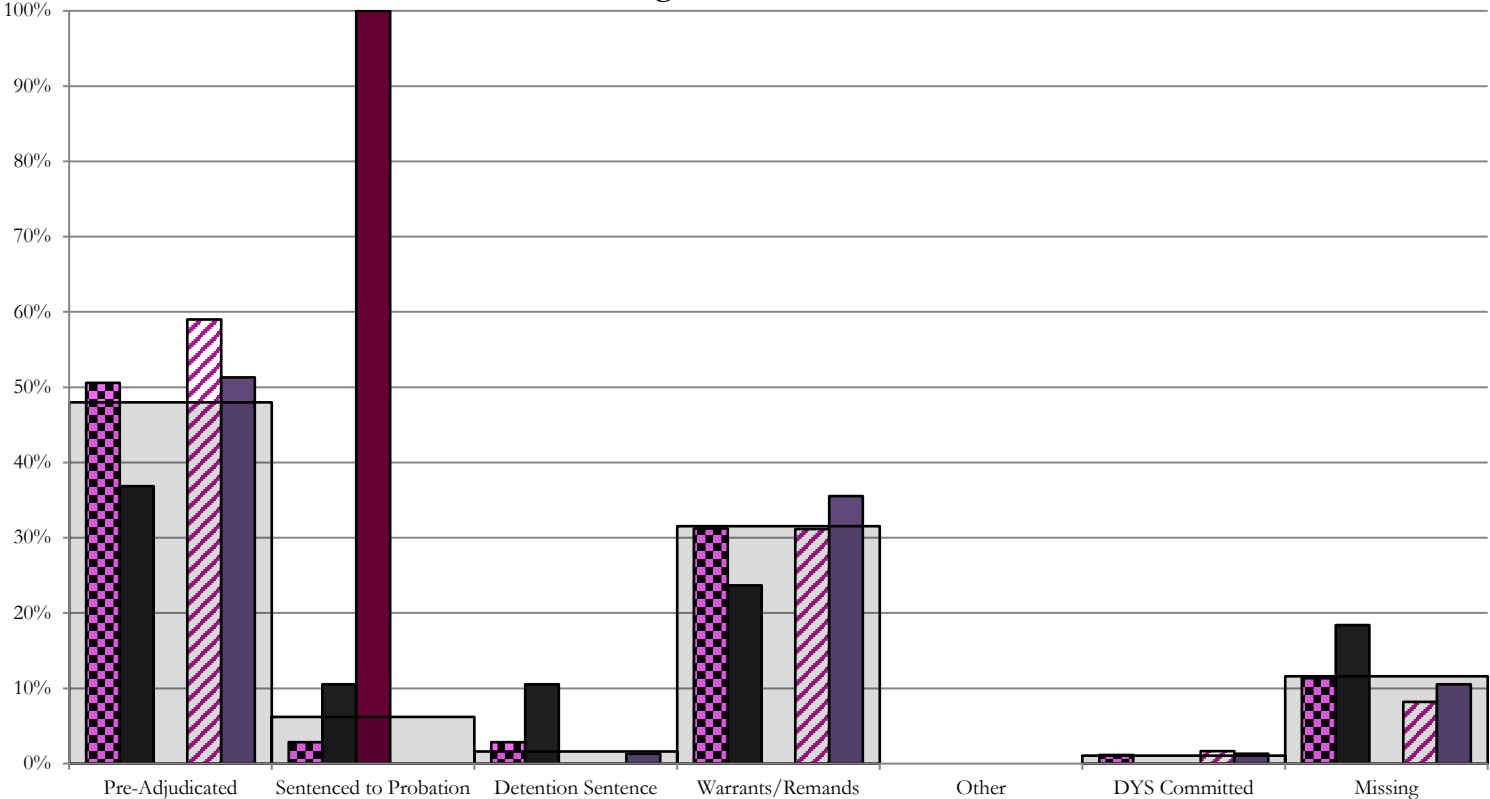
DYS Detention LOS by Judicial District				
Region	JD	YTD Detention Releases	YTD LOS (days)	LOS (days) Compared to State AVG
<i>Central</i>				
	1st	61	15.4	-0.9
	2nd	120	11.8	-4.4
	5th	2	6.6	-9.6
	18th	139	18.2	1.9
Central Total		322	15.2	-1.0
<i>Northeast</i>				
	8th	49	11.8	-4.5
	13th	13	11.2	-5.1
	17th	77	12.1	-4.2
	19th	46	10.4	-5.8
	20th	18	24.7	8.5
Northeast Total		203	12.7	-3.6
<i>Southern</i>				
	3rd	8	6.1	-10.2
	4th	126	19.0	2.8
	10th	24	7.2	-9.0
	11th	9	10.8	-5.4
	12th	4	20.2	3.9
	15th	1	20.3	4.1
	16th	1	4.1	-12.2
Southern Total		173	16.3	0.1
<i>Western</i>				
	6th	2	8.1	-8.2
	7th	6	16.4	0.2
	9th	9	26.7	10.5
	14th	1	2.0	-14.2
	21st	30	9.3	-6.9
	22nd	3	27.6	11.3
Western Total		51	14.1	-2.2
Statewide Total		749	16.3	-

August 2019 CDYC Supplemental Report

CYDC Reason Detained (RD) by Judicial District

Region	JD	Monthly New Admits	Pre-Adjudicated				Sentenced to Probation				Detention Sentence								Warrants/Remands				Other						DYS Committed		Missing							
			Felony		Misdemeanor		Technical Violator		New Charges		Probation Sentence		Detention Sentence		Valid Court Order (VCO) Truancy		Awaiting DSS (Social Services) Placement		Failure to Appear (FTA)		Failure to Comply (FTC)		Interstate Compact on Juveniles (ICJ) Hold		Immigration Hold		No Bond Hold		Out-of-Country Warrant		Institutional		Parole		Missing			
			#	%	#	%	#	%	#	%	#	%	#	%	#	%	#	%	#	%	#	%	#	%	#	%	#	%	#	%	#	%	#	%				
Central																																						
	1st	38	7	18.4%	7	18.4%	4	10.5%	0	0.0%	0	0.0%	4	10.5%	0	0.0%	0	0.0%	0	0.0%	6	15.8%	3	7.9%	0	0.0%	0	0.0%	0	0.0%	0	0.0%	0	0.0%	0	0.0%	7	18.4%
	2nd	61	26	42.6%	10	16.4%	0	0.0%	0	0.0%	0	0.0%	0	0.0%	0	0.0%	0	0.0%	9	14.8%	10	16.4%	0	0.0%	0	0.0%	0	0.0%	0	0.0%	0	0.0%	1	1.6%	5	8.2%		
	5th	1	0	0.0%	0	0.0%	1	100.0%	0	0.0%	0	0.0%	0	0.0%	0	0.0%	0	0.0%	0	0.0%	0	0.0%	0	0.0%	0	0.0%	0	0.0%	0	0.0%	0	0.0%	0	0.0%	0	0.0%		
	18th	76	20	26.3%	19	25.0%	0	0.0%	0	0.0%	0	0.0%	1	1.3%	0	0.0%	0	0.0%	5	6.6%	22	28.9%	0	0.0%	0	0.0%	0	0.0%	0	0.0%	1	1.3%	0	0.0%	8	10.5%		
Central Total		176	53	30%	36	20%	5	2.8%	0	0.0%	0	0.0%	5	2.8%	0	0.0%	0	0.0%	20	11%	35	20%	0	0.0%	0	0.0%	0	0.0%	0	0.0%	0	0.0%	1	0.6%	1	0.6%	20	11.4%
Northeast																																						
	8th	21	4	19.0%	3	14.3%	0	0.0%	0	0.0%	0	0.0%	0	0.0%	0	0.0%	0	0.0%	2	9.5%	7	33.3%	0	0.0%	0	0.0%	0	0.0%	0	0.0%	0	0.0%	0	0.0%	0	0.0%	5	23.8%
	13th	5	1	20.0%	0	0.0%	0	0.0%	0	0.0%	0	0.0%	0	0.0%	0	0.0%	0	0.0%	0	0.0%	2	40.0%	0	0.0%	0	0.0%	0	0.0%	0	0.0%	0	0.0%	0	0.0%	0	0.0%	2	40.0%
	17th	32	7	21.9%	2	6.3%	0	0.0%	0	0.0%	0	0.0%	1	3.1%	0	0.0%	0	0.0%	4	12.5%	12	37.5%	0	0.0%	0	0.0%	0	0.0%	0	0.0%	0	0.0%	0	0.0%	0	0.0%	6	18.8%
	19th	19	2	10.5%	5	26.3%	8	42.1%	0	0.0%	0	0.0%	0	0.0%	0	0.0%	0	0.0%	1	5.3%	3	15.8%	0	0.0%	0	0.0%	0	0.0%	0	0.0%	0	0.0%	0	0.0%	0	0.0%	0	0.0%
	20th	7	1	14.3%	1	14.3%	0	0.0%	0	0.0%	0	0.0%	0	0.0%	0	0.0%	0	0.0%	0	0.0%	1	14.3%	0	0.0%	0	0.0%	0	0.0%	0	0.0%	0	0.0%	0	0.0%	4	57.1%		
Northeast Total		84	15	18%	11	13%	8	9.5%	0	0.0%	0	0.0%	1	1.2%	0	0.0%	0	0.0%	7	8.3%	25	30%	0	0.0%	0	0.0%	0	0.0%	0	0.0%	0	0.0%	0	0.0%	0	0.0%	17	20%
Southern																																						
	3rd	1	1	100.0%	0	0.0%	0	0.0%	0	0.0%	0	0.0%	0	0.0%	0	0.0%	0	0.0%	0	0.0%	0	0.0%	0	0.0%	0	0.0%	0	0.0%	0	0.0%	0	0.0%	0	0.0%	0	0.0%		
	4th	70	35	50.0%	6	8.6%	0	0.0%	7	10.0%	0	0.0%	0	0.0%	0	0.0%	0	0.0%	9	12.9%	10	14.3%	0	0.0%	0	0.0%	0	0.0%	0	0.0%	2	2.9%	0	0.0%	1	1.4%		
	10th	7	3	42.9%	1	14.3%	1	14.3%	0	0.0%	0	0.0%	0	0.0%	0	0.0%	1	14.3%	0	0.0%	0	0.0%	0	0.0%	0	0.0%	0	0.0%	0	0.0%	0	0.0%	0	0.0%	1	14.3%		
	11th	3	3	100.0%	0	0.0%	0	0.0%	0	0.0%	0	0.0%	0	0.0%	0	0.0%	0	0.0%	0	0.0%	0	0.0%	0	0.0%	0	0.0%	0	0.0%	0	0.0%	0	0.0%	0	0.0%	0	0.0%		
	12th	2	2	100.0%	0	0.0%	0	0.0%	0	0.0%	0	0.0%	0	0.0%	0	0.0%	0	0.0%	0	0.0%	0	0.0%	0	0.0%	0	0.0%	0	0.0%	0	0.0%	0	0.0%	0	0.0%	0	0.0%		
	15th	0	0	0.0%	0	0.0%	0	0.0%	0	0.0%	0	0.0%	0	0.0%	0	0.0%	0	0.0%	0	0.0%	0	0.0%	0	0.0%	0	0.0%	0	0.0%	0	0.0%	0	0.0%	0	0.0%	0	0.0%		
	16th	1	1	100.0%	0	0.0%	0	0.0%	0	0.0%	0	0.0%	0	0.0%	0	0.0%	0	0.0%	0	0.0%	0	0.0%	0	0.0%	0	0.0%	0	0.0%	0	0.0%	0	0.0%	0	0.0%	0	0.0%		
Southern Total		84	45	54%	7	8%	1	1.2%	7	8.3%	0	0.0%	0	0.0%	0	0.0%	0	0.0%	10	12%	10	12%	0	0.0%	0	0.0%	0	0.0%	0	0.0%	0	0.0%	2	2.4%	0	0.0%	2	2%
Western																																						
	6th	0	0	0.0%	0	0.0%	0	0.0%	0	0.0%	0	0.0%	0	0.0%	0	0.0%	0	0.0%	0	0.0%	0	0.0%	0	0.0%	0	0.0%	0	0.0%	0	0.0%	0	0.0%	0	0.0%	0	0.0%		
	7th	2	0	0.0%	1	50.0%	0	0.0%	1	50.0%	0	0.0%	0	0.0%	0	0.0%	0	0.0%	0	0.0%	0	0.0%	0	0.0%	0	0.0%	0	0.0%	0	0.0%	0	0.0%	0	0.0%	0	0.0%		
	9th	4	1	25.0%	1	25.0%	1	25.0%	0	0.0%	0	0.0%	0	0.0%	0	0.0%	0	0.0%	0	0.0%	0	0.0%	0	0.0%	0	0.0%	0	0.0%	0	0.0%	0	0.0%	0	0.0%	1	25%		
	14th	3	1	33.3%	0	0.0%	0	0.0%	0	0.0%	0	0.0%	0	0.0%	0	0.0%	0	0.0%	0	0.0%	0	0.0%	0	0.0%	0	0.0%	0	0.0%	0	0.0%	0	0.0%	0	0.0%	2	67%		
	21st	17	4	23.5%	3	17.6%	0	0.0%	0	0.0%	0	0.0%	0	0.0%	0	0.0%	0	0.0%	3	17.6%	6	35.3%	0	0.0%	0	0.0%	0	0.0%	0	0.0%	0	0.0%	0	0.0%	1	6%		
	22nd	1	0	0.0%	0	0.0%	0	0.0%	0	0.0%	0	0.0%	0	0.0%	0	0.0%	0	0.0%	0	0.0%	1	100.0%	0	0.0%	0	0.0%	0	0.0%	0	0.0%	0	0.0%	0	0.0%	0	0.0%		
Western Total		27	6	22%	5	18.5%	1	3.7%	1	3.7%	0	0.0%	0	0.0%	0	0.0%	0	0.0%	3	11.1%	7	26%	0	0.0%	0	0.0%	0	0.0%	0	0.0%	0	0.0%	0	0.0%	4	15%		
Individual RD Totals		371	119	32%	59	16%	15	4.0%	8	2.2%	0	0.0%	6	1.6%	0	0.0%	0	0.0%	40	11%	77	21%	0	0.0%	0	0.0%	0	0.0%	0	0.0%	0	0.0%	3	0.8%	1	0.3%	43	12%
Statewide Totals		371	178	48.0%	23	6.2%	6	1.6%	0	0.0%	0	0.0%	6	1.6%	0	0.0%	0	0.0%	117	31.5%	0	0.0%	0	0.0%	0	0.0%	0	0.0%	4	1.1%	43	12%						

Central Region CYDC Reason Detained by Judicial District August 2019 New Admits



■ CENTRAL REGION, 176 New Admits

■ 5th JD, 1 New Admits

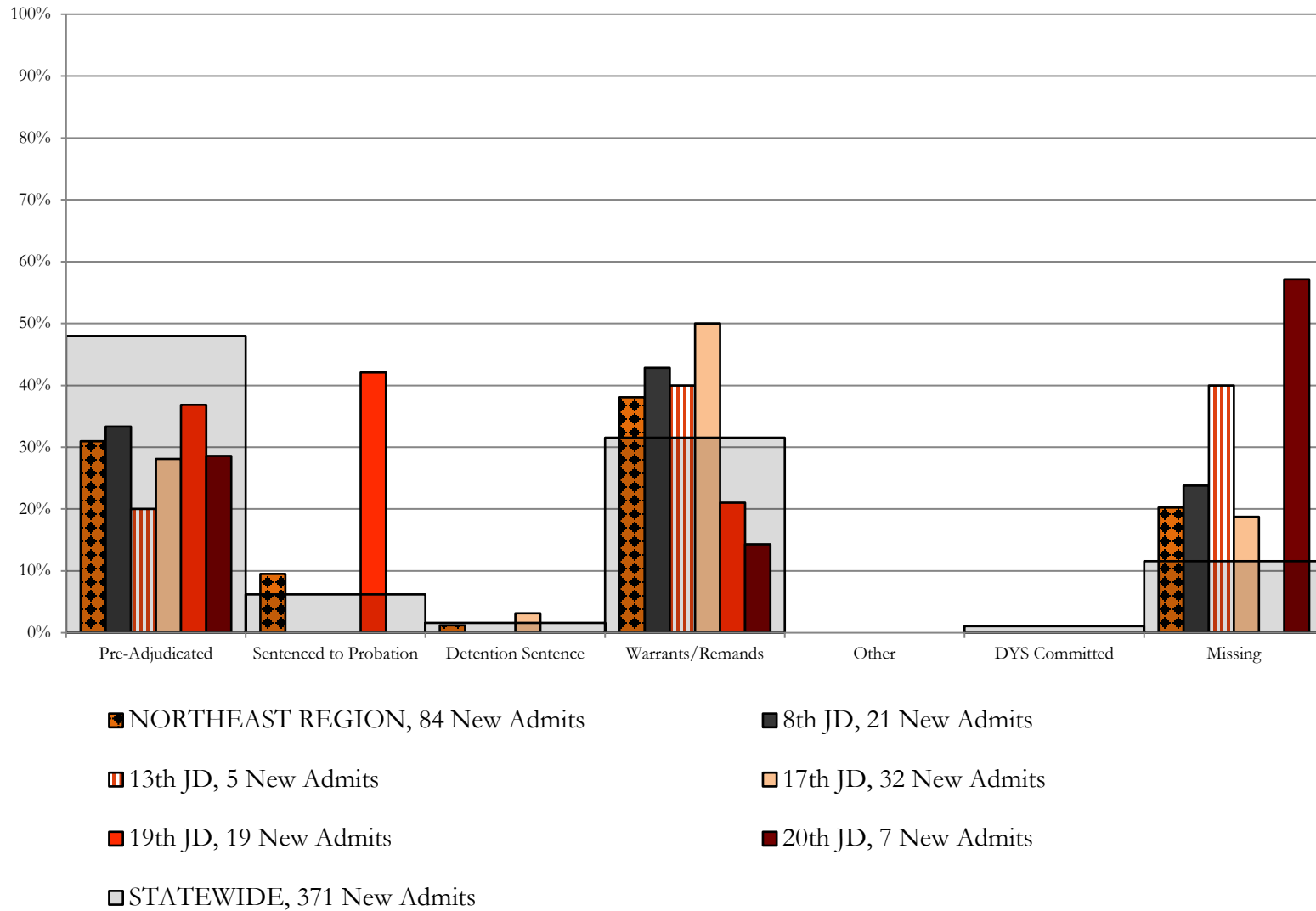
■ 18th JD, 76 New Admits

■ 1st JD, 38 New Admits

■ 2nd JD, 61 New Admits

■ STATEWIDE, 371 New Admits

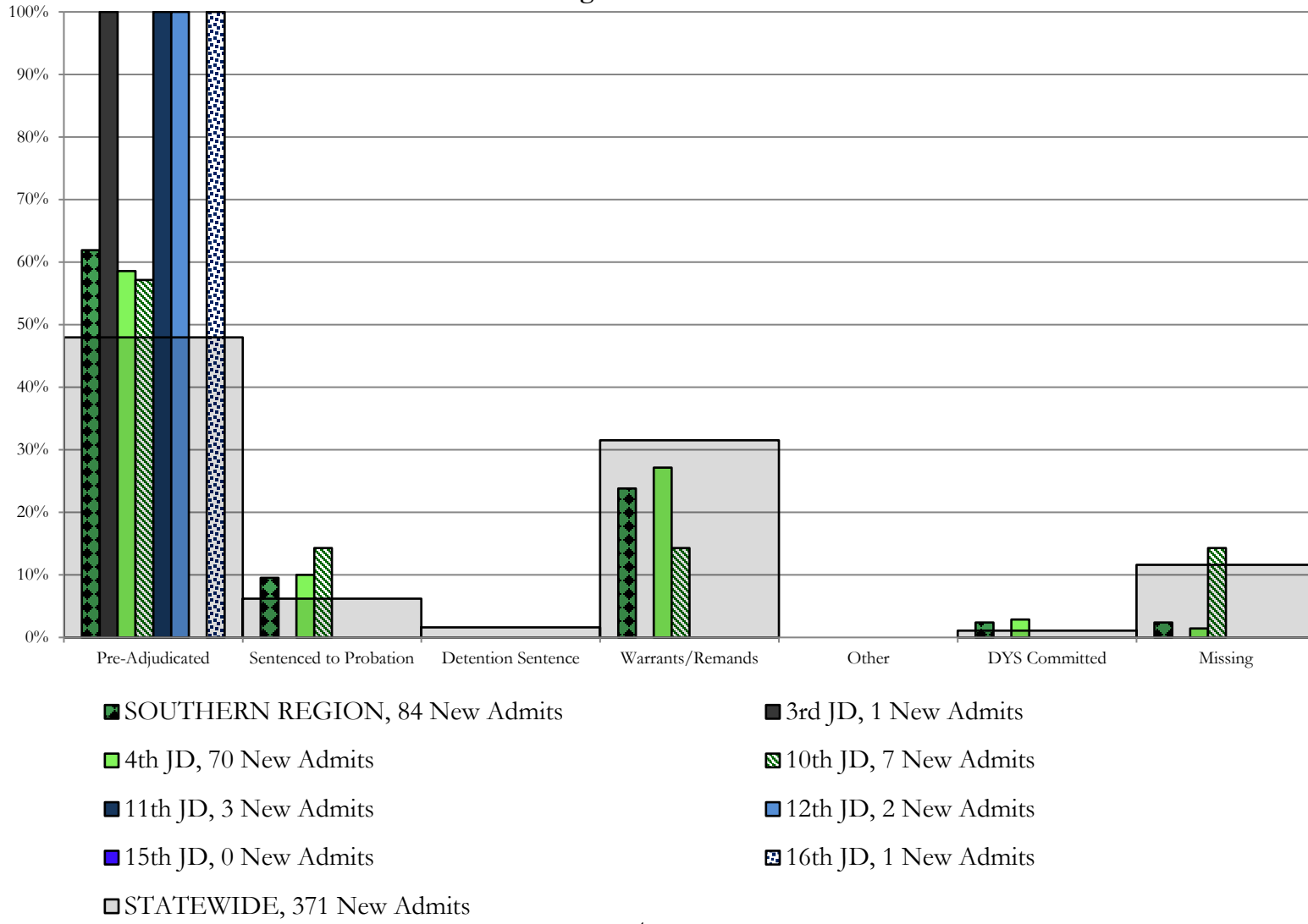
Northeast Region CYDC Reason Detained by Judicial District August 2019 New Admits



Southern Region

CYDC Reason Detained by Judicial District

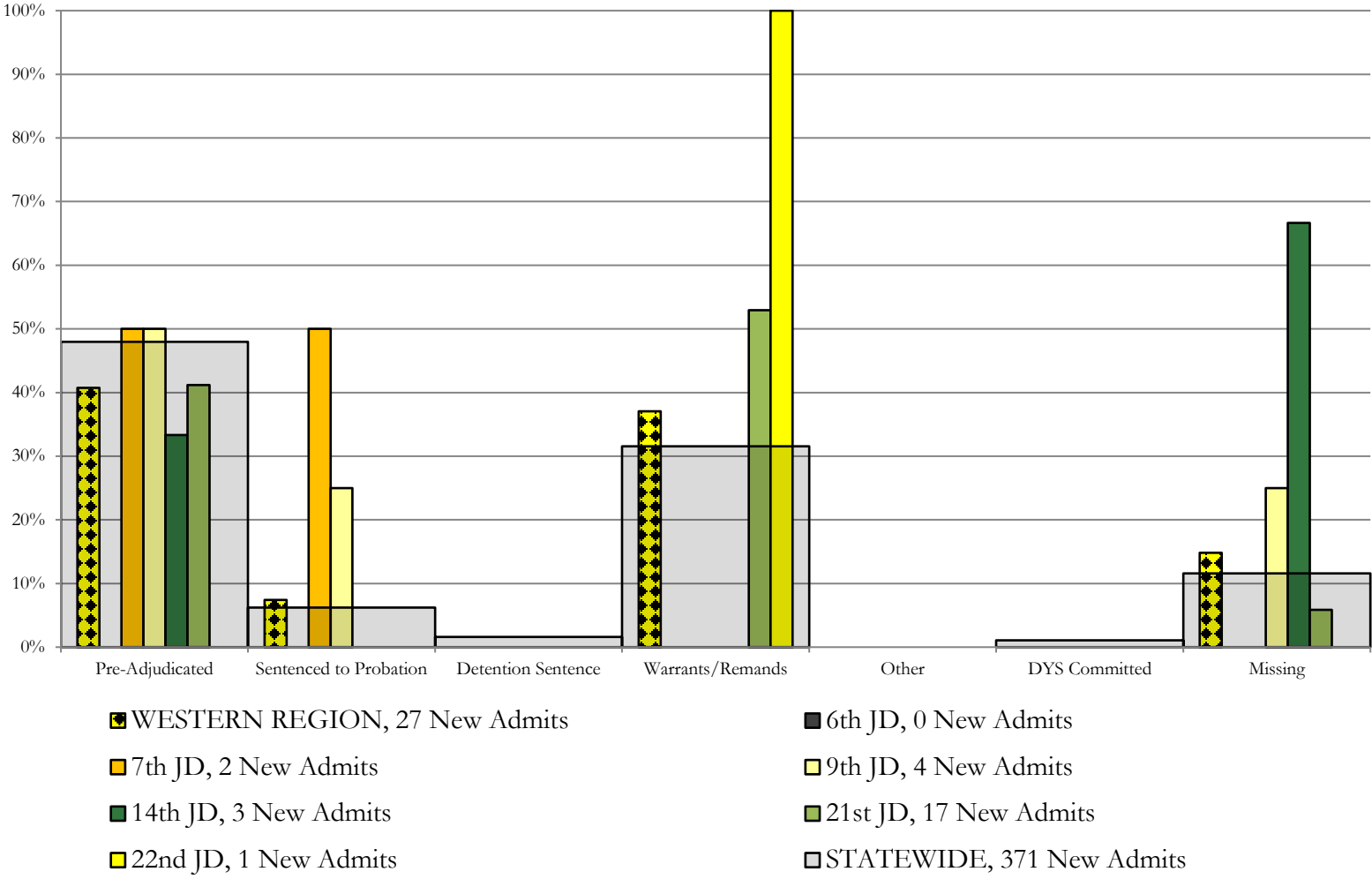
August 2019 New Admits



Western Region

CYDC Reason Detained by Judicial District

August 2019 New Admits



August 2019 CYDC Supplemental Report

DYS Detention Maximum Youth Served by Judicial District¹

Region	JD	Detention Capacity	Detention ADP		Maximum Youth Served on a Single Day ^{2,3}			
			August 2019	YTD	August 2019		YTD	
					Number of Youth	% of Detention Capacity	Number of Youth	% of Detention Capacity
<i>Central</i>								
	1st	35	13.7	13.9	18	51.4%	19	54.3%
	2nd	49	39.4	36.4	46	93.9%	46	93.9%
	5th	4	0.8	0.7	1	25.0%	1	25.0%
	18th	48	47.4	47.5	52	108.3%	58	120.8%
Central Region		136	101.3	98.4	109	80.1%	111	81.6%
<i>Northeast</i>								
	8th	14	15.5	14.3	19	135.7%	19	135.7%
	13th	5	1.3	2.2	4	80.0%	5	100.0%
	17th	28	23.7	24.0	28	100.0%	29	103.6%
	19th	18	10.5	10.2	14	77.8%	14	77.8%
	20th	8	6.0	6.2	8	100.0%	8	100.0%
Northeast Region		73	57.0	57.0	63	86.3%	65	89.0%
<i>Southern</i>								
	3rd	2	2.0	2.7	3	150.0%	6	300.0%
	4th	54	53.0	46.8	61	113.0%	61	113.0%
	10th	14	2.0	2.8	6	42.9%	6	42.9%
	11th	3	1.8	1.6	3	100.0%	5	166.7%
	12th	4	1.1	1.0	2	50.0%	3	75.0%
	15th	2	0.4	0.3	1	50.0%	1	50.0%
	16th	3	0.5	0.3	1	33.3%	1	33.3%
Southern Region		82	60.8	55.4	69	84.1%	69	84.1%
<i>Western</i>								
	6th	5	0.0	0.2	0	0.0%	1	20.0%
	7th	5	1.0	1.6	2	40.0%	4	80.0%
	9th	3	1.4	1.9	3	100.0%	4	133.3%
	14th	3	0.8	0.4	3	100.0%	3	100.0%
	21st	16	7.8	8.4	12	75.0%	13	81.3%
	22nd	4	1.2	2.0	3	75.0%	5	125.0%
Western Region		36	12.1	14.5	17	47.2%	24	66.7%
<i>Missing JD or Multiple JDs</i>			1.2	1.3				
Statewide		327	232.5	226.7	246	75.2%	246	75.2%

¹ Maximum youth served is the highest number of youth in detention on a single day during the month or fiscal year.

² Regional figures are not the sum of judicial districts, but represent the maximum count on one day for the entire region.

³ State figures are not the sum of regional figures, but represent the maximum count on one day for the entire state.

August 2019 CYDC Supplemental Report

CYDC Community ADP by Judicial District

Region	JD	Committed		Diversion		ICJ		Municipal		Pre-Adjudicated		Sentenced		VCO		Total	
		August 2019	YTD	August 2019	YTD	August 2019	YTD	August 2019	YTD	August 2019	YTD	August 2019	YTD	August 2019	YTD	August 2019	YTD
<i>Central</i>																	
	1st	2.8	2.2	5.0	4.6	0.2	0.1	23.7	23.6	168.2	161.2	34.2	34.0	0.0	0.0	234.1	225.7
	2nd	5.0	4.0	0.3	0.2	1.0	1.0	0.0	0.0	159.6	150.3	62.4	60.0	0.0	0.0	228.4	215.5
	5th	0.0	0.0	11.0	11.8	0.0	0.0	0.0	0.0	16.0	16.0	32.0	32.6	0.0	0.0	59.0	60.4
	18th	4.6	4.6	0.0	0.5	0.0	0.0	2.0	1.6	297.3	298.6	32.6	31.9	0.0	0.0	336.5	337.1
Central Total		12.5	10.8	16.4	17.0	1.2	1.1	25.7	25.2	641.1	626.0	161.2	158.4	0.0	0.0	858.1	838.6
<i>Northeast</i>																	
	8th	0.0	0.0	10.1	10.2	0.0	0.0	0.0	0.0	90.0	86.0	67.3	65.4	0.0	0.0	167.4	161.6
	13th	0.0	0.0	0.0	0.0	0.0	0.0	0.1	0.0	17.9	18.9	1.9	1.7	1.0	1.0	20.8	21.6
	17th	1.0	1.0	0.7	0.4	0.0	0.0	0.0	0.0	356.1	353.1	104.7	103.0	0.0	0.0	462.5	457.4
	19th	0.0	0.2	0.0	0.2	0.0	0.0	4.0	3.9	72.6	76.3	35.9	35.5	1.0	0.9	113.6	117.0
	20th	0.7	0.9	70.0	69.9	1.0	1.0	0.0	0.0	109.3	106.2	16.0	15.9	2.0	2.0	199.0	195.8
Northeast Total		1.7	2.1	80.8	80.6	1.0	1.0	4.1	3.9	645.9	640.4	225.7	221.4	4.0	3.9	963.3	953.3
<i>Southern</i>																	
	3rd	0.0	0.0	0.0	0.0	0.0	0.0	0.0	0.0	17.8	17.3	3.8	4.0	0.0	0.0	21.6	21.3
	4th	2.5	2.5	0.0	0.0	0.0	0.0	37.6	37.2	151.2	137.7	42.3	38.6	0.0	0.0	233.6	215.9
	10th	0.0	0.0	0.0	0.0	1.0	1.0	3.0	3.0	19.3	19.8	5.4	5.4	0.0	0.0	28.7	29.3
	11th	1.0	1.0	0.0	0.0	0.0	0.0	6.0	6.0	24.3	23.5	25.0	25.0	1.0	1.0	57.3	56.5
	12th	0.0	0.0	2.1	2.4	0.0	0.0	1.0	1.0	6.3	6.3	1.0	1.1	0.0	0.0	10.4	10.8
	15th	0.0	0.0	3.9	3.9	0.0	0.0	0.0	0.0	3.0	2.3	10.0	9.6	0.0	0.0	16.9	15.8
	16th	0.0	0.0	0.0	0.0	0.0	0.0	0.0	0.0	7.0	6.6	2.0	2.0	12.0	12.0	21.0	20.6
Southern Total		3.5	3.5	5.9	6.4	1.0	1.0	47.6	47.2	228.9	213.5	89.5	85.7	13.0	13.0	389.5	370.3
<i>Western</i>																	
	6th	0.0	0.0	0.0	0.0	0.0	0.0	0.0	0.0	5.3	6.6	0.0	0.0	0.0	0.0	5.3	6.6
	7th	0.0	0.0	21.8	19.9	0.0	0.0	2.0	2.0	9.2	9.3	4.4	4.7	0.0	0.0	37.5	35.9
	9th	0.0	0.0	0.0	0.0	0.0	0.0	0.0	0.0	8.3	8.9	0.7	0.4	0.0	0.0	9.1	9.3
	14th	0.0	0.0	12.0	12.8	0.0	0.0	0.0	0.0	4.7	4.3	0.0	0.0	0.0	0.0	16.7	17.1
	21st	0.0	0.0	0.0	0.0	0.0	0.0	0.0	0.0	68.3	64.6	25.0	24.2	0.0	0.0	93.3	88.8
	22nd	0.0	0.0	0.0	0.0	0.0	0.0	0.0	0.0	2.6	3.5	12.1	13.0	0.0	0.0	14.8	16.5
Western Total		0.0	0.0	33.8	32.7	0.0	0.0	2.0	2.0	98.5	97.2	42.3	42.4	0.0	0.0	176.7	174.2
Statewide Total		17.7	16.3	137.0	136.7	3.2	3.1	79.4	78.3	1614.4	1577.1	518.8	508.0	17.0	16.9	2387.6	2336.5