

# July 2019 FY 2019-2020 CYDC JDSAG SUPPLEMENTAL REPORT

---

Prepared by the Division of Youth Services (DYS)

Data Management & Analysis

August 27, 2019



**COLORADO**

**Division of Youth Services**

Office of Children, Youth & Families

# July 2019 CYDC Supplemental Report

## DYS Commitment ADP & New Commitments by Judicial District

Region	JD <sup>1</sup>	2020 Population Estimates <sup>2</sup>	ADP <sup>3</sup>		New Commitments		
			July 2019	YTD	July 2019	YTD	YTD Rate <sup>4</sup>
<i>Central</i>							
	1st	54,722	84.3	84.3	3	3	0.5
	2nd	57,309	72.9	72.9	2	2	0.3
	5th	9,320	5.0	5.0	0	0	0.0
	18th	115,605	84.7	84.7	2	2	0.2
<b>Central Total</b>		<b>236,956</b>	<b>246.9</b>	<b>246.9</b>	<b>7</b>	<b>7</b>	<b>0.3</b>
<i>Northeast</i>							
	8th	34,597	18.9	18.9	1	1	0.3
	13th	8,496	3.1	3.1	0	0	0.0
	17th	69,940	49.0	49.0	1	1	0.1
	19th	38,548	36.9	36.9	1	1	0.3
	20th	31,121	3.0	3.0	0	0	0.0
<b>Northeast Total</b>		<b>182,702</b>	<b>110.8</b>	<b>110.8</b>	<b>3</b>	<b>3</b>	<b>0.2</b>
<i>Southern</i>							
	3rd	1,817	3.0	3.0	0	0	0.0
	4th	83,065	71.7	71.7	3	3	0.4
	10th	18,110	13.1	13.1	1	1	0.6
	11th	7,264	3.8	3.8	1	1	1.4
	12th	5,399	3.9	3.9	2	2	3.7
	15th	2,125	3.0	3.0	0	0	0.0
	16th	2,762	1.0	1.0	0	0	0.0
<b>Southern Total</b>		<b>120,542</b>	<b>99.3</b>	<b>99.3</b>	<b>7</b>	<b>7</b>	<b>0.6</b>
<i>Western</i>							
	6th	7,285	4.0	4.0	0	0	0.0
	7th	10,595	5.9	5.9	1	1	0.9
	9th	8,578	4.6	4.6	0	0	0.0
	14th	5,752	0.0	0.0	0	0	0.0
	21st	16,322	36.3	36.3	2	2	1.2
	22nd	3,063	4.0	4.0	0	0	0.0
<b>Western Total</b>		<b>51,595</b>	<b>54.9</b>	<b>54.9</b>	<b>3</b>	<b>3</b>	<b>0.6</b>
<b>Statewide Total</b>		<b>591,795</b>	<b>511.9</b>	<b>511.9</b>	<b>20</b>	<b>20</b>	<b>0.3</b>

<sup>1</sup> JD represents the judicial district in which the client was committed. Regional totals are a sum of their respective judicial districts. Regional totals reported here may differ slightly from those reported in the Monthly Population Report, where region is defined by active caseloads.

<sup>2</sup> Source: DOLA 2020 Estimates.

<sup>3</sup> Due to rounding, totals shown may not be an exact sum of the subtotals.

<sup>4</sup> Per 10,000 youth in the population.

# July 2019 CYDC Supplemental Report

## DYS Detention ADP and New Detention Admissions by Judicial District

Region	JD	2020 Population Estimates <sup>1</sup>	ADP		New Admits		
			July 2019	YTD	July 2019	YTD	YTD New Admit Rate <sup>2</sup>
<i>Central</i>							
	1st	54,722	14.0	14.0	27	27	4.9
	2nd	57,309	33.3	33.3	64	64	11.2
	5th	9,320	0.5	0.5	1	1	1.1
	18th	115,605	47.6	47.6	67	67	5.8
<b>Central Total</b>		<b>236,956</b>	<b>95.5</b>	<b>95.5</b>	<b>159</b>	<b>159</b>	<b>6.7</b>
<i>Northeast</i>							
	8th	34,597	12.9	12.9	28	28	8.1
	13th	8,496	3.1	3.1	6	6	7.1
	17th	69,940	24.4	24.4	36	36	5.1
	19th	38,548	11.3	11.3	31	31	8.0
	20th	31,121	6.9	6.9	9	9	2.9
<b>Northeast Total</b>		<b>182,702</b>	<b>58.5</b>	<b>58.5</b>	<b>110</b>	<b>110</b>	<b>6.0</b>
<i>Southern</i>							
	3rd	1,817	3.3	3.3	3	3	16.5
	4th	83,065	40.7	40.7	72	72	8.7
	10th	18,110	3.5	3.5	14	14	7.7
	11th	7,264	1.4	1.4	7	7	9.6
	12th	5,399	0.8	0.8	2	2	3.7
	15th	2,125	0.3	0.3	1	1	4.7
	16th	2,762	0.2	0.2	1	1	3.6
<b>Southern Total</b>		<b>120,542</b>	<b>50.1</b>	<b>50.1</b>	<b>100</b>	<b>100</b>	<b>8.3</b>
<i>Western</i>							
	6th	7,285	0.5	0.5	1	1	1.4
	7th	10,595	2.2	2.2	2	2	1.9
	9th	8,578	2.4	2.4	4	4	4.7
	14th	5,752	0.0	0.0	0	0	0.0
	21st	16,322	9.1	9.1	20	20	12.3
	22nd	3,063	2.9	2.9	4	4	13.1
<b>Western Total</b>		<b>51,595</b>	<b>17.0</b>	<b>17.0</b>	<b>31</b>	<b>31</b>	<b>6.0</b>
<i>Missing JD or Multiple JDs</i>			<i>1.4</i>	<i>1.4</i>			
<b>Statewide Total</b>		<b>591,795</b>	<b>222.4</b>	<b>222.4</b>	<b>400</b>	<b>400</b>	<b>6.8</b>

<sup>1</sup> Source: DOLA 2020 Estimates.

<sup>2</sup> Per 10,000 youth in the population.

# July 2019 CYDC Supplemental Report

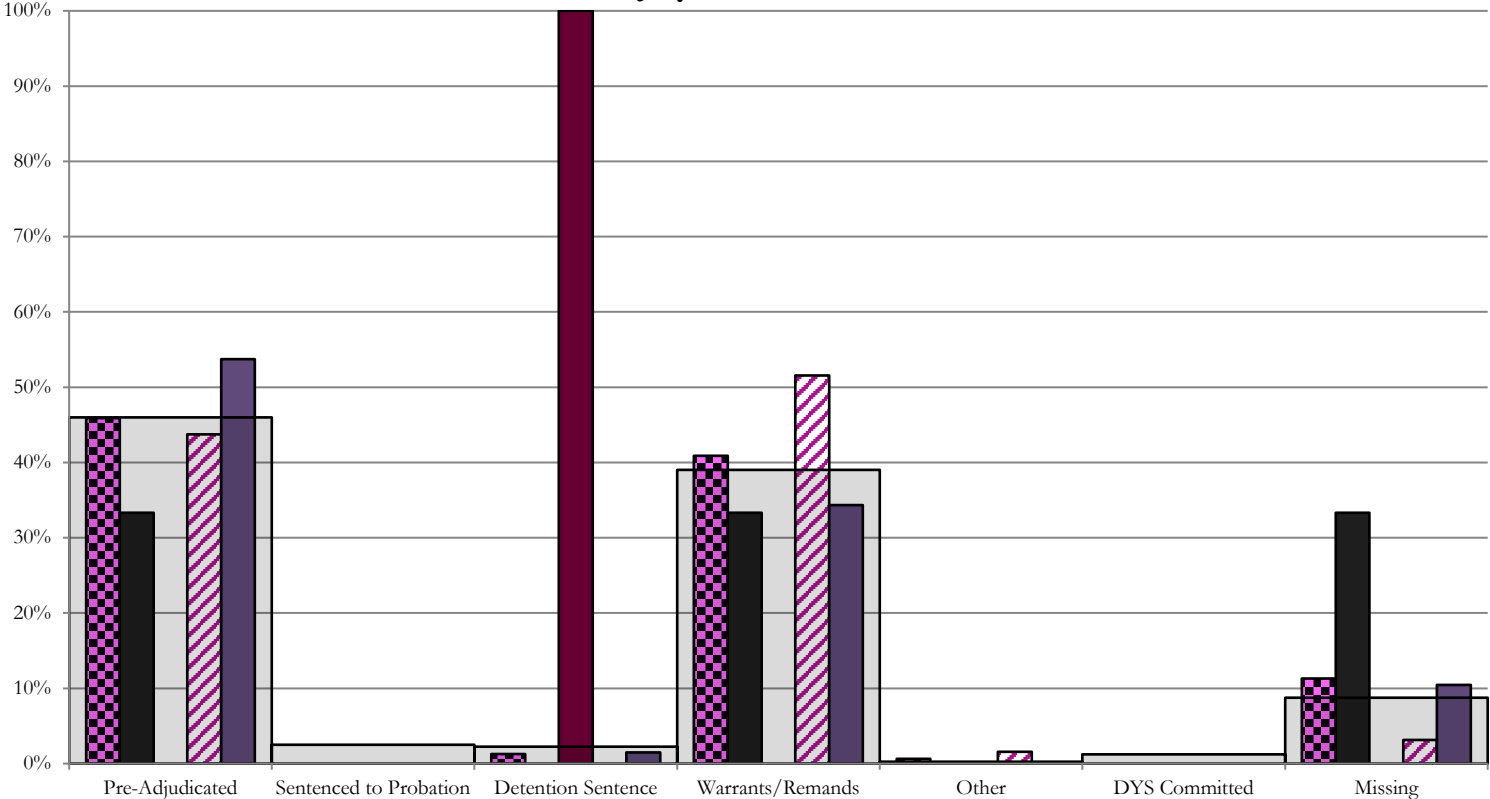
DYS Detention LOS by Judicial District				
Region	JD	YTD Detention Releases	YTD LOS (days)	LOS (days) Compared to State AVG
<i>Central</i>				
	1st	28	16.2	0.9
	2nd	64	13.4	-1.8
	5th	2	6.7	-8.6
	18th	62	17.3	2.0
<b>Central Total</b>		<b>156</b>	<b>15.4</b>	<b>0.1</b>
<i>Northeast</i>				
	8th	23	8.2	-7.1
	13th	7	8.2	-7.1
	17th	39	9.5	-5.8
	19th	29	6.5	-8.8
	20th	9	31.4	16.1
<b>Northeast Total</b>		<b>107</b>	<b>10.1</b>	<b>-5.2</b>
<i>Southern</i>				
	3rd	7	6.9	-8.4
	4th	60	16.1	0.8
	10th	12	8.7	-6.5
	11th	8	12.1	-3.2
	12th	3	19.9	4.6
	15th	0	0.0	-15.3
	16th	1	4.2	-11.1
<b>Southern Total</b>		<b>91</b>	<b>14.1</b>	<b>-1.2</b>
<i>Western</i>				
	6th	2	8.2	-7.1
	7th	4	8.8	-6.5
	9th	8	28.2	12.9
	14th	0	0.0	-15.3
	21st	11	2.9	-12.4
	22nd	3	27.8	12.5
<b>Western Total</b>		<b>28</b>	<b>14.0</b>	<b>-1.3</b>
<b>Statewide Total</b>		<b>380</b>	<b>15.3</b>	<b>-</b>

## July 2019 CDYC Supplemental Report

### CYDC Reason Detained (RD) by Judicial District

Region	JD	Monthly New Admits	Pre-Adjudicated				Sentenced to Probation				Detention Sentence								Warrants/Remands				Other						DYS Committed				Missing					
			Felony		Misdemeanor		Technical Violator		New Charges		Probation Sentence		Detention Sentence		Valid Court Order (VCO) Truancy		Awaiting DSS (Social Services) Placement		Failure to Appear (FTA)		Failure to Comply (FTC)		Interstate Compact on Juveniles (ICJ) Hold		Immigration Hold		No Bond Hold		Out-of-Country Warrant		Institutional		Parole		Missing			
			#	%	#	%	#	%	#	%	#	%	#	%	#	%	#	%	#	%	#	%	#	%	#	%	#	%	#	%	#	%	#	%				
<b>Central</b>																																						
	1st	27	6	22.2%	3	11.1%	0	0.0%	0	0.0%	0	0.0%	0	0.0%	0	0.0%	0	0.0%	5	18.5%	4	14.8%	0	0.0%	0	0.0%	0	0.0%	0	0.0%	0	0.0%	0	0.0%	0	0.0%	9	33.3%
	2nd	64	23	35.9%	5	7.8%	0	0.0%	0	0.0%	0	0.0%	0	0.0%	0	0.0%	0	0.0%	16	25.0%	17	26.6%	1	1.6%	0	0.0%	0	0.0%	0	0.0%	0	0.0%	0	0.0%	0	0.0%	2	3.1%
	5th	1	0	0.0%	0	0.0%	0	0.0%	0	0.0%	0	0.0%	1	100.0%	0	0.0%	0	0.0%	0	0.0%	0	0.0%	0	0.0%	0	0.0%	0	0.0%	0	0.0%	0	0.0%	0	0.0%	0	0.0%	0	0.0%
	18th	67	27	40.3%	9	13.4%	0	0.0%	0	0.0%	0	0.0%	1	1.5%	0	0.0%	0	0.0%	6	9.0%	17	25.4%	0	0.0%	0	0.0%	0	0.0%	0	0.0%	0	0.0%	0	0.0%	0	0.0%	7	10.4%
<b>Central Total</b>		<b>159</b>	<b>56</b>	<b>35%</b>	<b>17</b>	<b>11%</b>	<b>0</b>	<b>0.0%</b>	<b>0</b>	<b>0.0%</b>	<b>0</b>	<b>0.0%</b>	<b>2</b>	<b>1.3%</b>	<b>0</b>	<b>0.0%</b>	<b>0</b>	<b>0.0%</b>	<b>27</b>	<b>17%</b>	<b>38</b>	<b>24%</b>	<b>1</b>	<b>0.6%</b>	<b>0</b>	<b>0.0%</b>	<b>0</b>	<b>0.0%</b>	<b>0</b>	<b>0.0%</b>	<b>0</b>	<b>0.0%</b>	<b>0</b>	<b>0.0%</b>	<b>0</b>	<b>0.0%</b>	<b>18</b>	<b>11.3%</b>
<b>Northeast</b>																																						
	8th	28	3	10.7%	4	14.3%	0	0.0%	0	0.0%	0	0.0%	0	0.0%	0	0.0%	0	0.0%	4	14.3%	16	57.1%	0	0.0%	0	0.0%	0	0.0%	0	0.0%	0	0.0%	0	0.0%	0	0.0%	1	3.6%
	13th	6	1	16.7%	1	16.7%	0	0.0%	0	0.0%	0	0.0%	0	0.0%	0	0.0%	0	0.0%	0	0.0%	3	50.0%	0	0.0%	0	0.0%	0	0.0%	0	0.0%	0	0.0%	0	0.0%	0	0.0%	1	16.7%
	17th	36	6	16.7%	3	8.3%	0	0.0%	0	0.0%	0	0.0%	0	0.0%	0	0.0%	0	0.0%	11	30.6%	9	25.0%	0	0.0%	0	0.0%	0	0.0%	0	0.0%	0	0.0%	0	0.0%	0	0.0%	7	19.4%
	19th	31	19	61.3%	8	25.8%	3	9.7%	0	0.0%	0	0.0%	0	0.0%	0	0.0%	0	0.0%	1	3.2%	0	0.0%	0	0.0%	0	0.0%	0	0.0%	0	0.0%	0	0.0%	0	0.0%	0	0.0%	0	0.0%
	20th	9	2	22.2%	0	0.0%	0	0.0%	0	0.0%	0	0.0%	1	11.1%	0	0.0%	4	44.4%	0	0.0%	2	22.2%	0	0.0%	0	0.0%	0	0.0%	0	0.0%	0	0.0%	0	0.0%	0	0.0%	0	0.0%
<b>Northeast Total</b>		<b>110</b>	<b>31</b>	<b>28%</b>	<b>16</b>	<b>15%</b>	<b>3</b>	<b>2.7%</b>	<b>0</b>	<b>0.0%</b>	<b>0</b>	<b>0.0%</b>	<b>1</b>	<b>0.9%</b>	<b>0</b>	<b>0.0%</b>	<b>4</b>	<b>3.6%</b>	<b>16</b>	<b>14.5%</b>	<b>30</b>	<b>27%</b>	<b>0</b>	<b>0.0%</b>	<b>0</b>	<b>0.0%</b>	<b>0</b>	<b>0.0%</b>	<b>0</b>	<b>0.0%</b>	<b>0</b>	<b>0.0%</b>	<b>0</b>	<b>0.0%</b>	<b>0</b>	<b>0.0%</b>	<b>9</b>	<b>8%</b>
<b>Southern</b>																																						
	3rd	3	1	33.3%	1	33.3%	0	0.0%	0	0.0%	0	0.0%	0	0.0%	0	0.0%	0	0.0%	0	0.0%	0	0.0%	0	0.0%	0	0.0%	0	0.0%	0	0.0%	0	0.0%	0	0.0%	1	33.3%		
	4th	72	29	40.3%	4	5.6%	2	2.8%	3	4.2%	0	0.0%	2	2.8%	0	0.0%	0	0.0%	9	12.5%	15	20.8%	0	0.0%	0	0.0%	0	0.0%	0	0.0%	5	6.9%	0	0.0%	3	4.2%		
	10th	14	7	50.0%	1	7.1%	0	0.0%	0	0.0%	0	0.0%	0	0.0%	0	0.0%	0	0.0%	2	14.3%	4	28.6%	0	0.0%	0	0.0%	0	0.0%	0	0.0%	0	0.0%	0	0.0%	0	0.0%	0	0.0%
	11th	7	3	42.9%	2	28.6%	0	0.0%	0	0.0%	0	0.0%	0	0.0%	0	0.0%	0	0.0%	0	0.0%	1	14.3%	0	0.0%	0	0.0%	0	0.0%	0	0.0%	0	0.0%	0	0.0%	1	14.3%		
	12th	2	0	0.0%	0	0.0%	1	50.0%	0	0.0%	0	0.0%	0	0.0%	0	0.0%	0	0.0%	0	0.0%	1	50.0%	0	0.0%	0	0.0%	0	0.0%	0	0.0%	0	0.0%	0	0.0%	0	0.0%	0	0.0%
	15th	1	1	100.0%	0	0.0%	0	0.0%	0	0.0%	0	0.0%	0	0.0%	0	0.0%	0	0.0%	0	0.0%	0	0.0%	0	0.0%	0	0.0%	0	0.0%	0	0.0%	0	0.0%	0	0.0%	0	0.0%	0	0.0%
	16th	1	1	100.0%	0	0.0%	0	0.0%	0	0.0%	0	0.0%	0	0.0%	0	0.0%	0	0.0%	0	0.0%	0	0.0%	0	0.0%	0	0.0%	0	0.0%	0	0.0%	0	0.0%	0	0.0%	0	0.0%	0	0.0%
<b>Southern Total</b>		<b>100</b>	<b>42</b>	<b>42%</b>	<b>8</b>	<b>8%</b>	<b>3</b>	<b>3.0%</b>	<b>3</b>	<b>3.0%</b>	<b>0</b>	<b>0.0%</b>	<b>2</b>	<b>2.0%</b>	<b>0</b>	<b>0.0%</b>	<b>0</b>	<b>0.0%</b>	<b>11</b>	<b>11%</b>	<b>21</b>	<b>21%</b>	<b>0</b>	<b>0.0%</b>	<b>0</b>	<b>0.0%</b>	<b>0</b>	<b>0.0%</b>	<b>0</b>	<b>0.0%</b>	<b>0</b>	<b>0.0%</b>	<b>5</b>	<b>5.0%</b>	<b>0</b>	<b>0.0%</b>	<b>5</b>	<b>5%</b>
<b>Western</b>																																						
	6th	1	0	0.0%	0	0.0%	0	0.0%	0	0.0%	0	0.0%	0	0.0%	0	0.0%	0	0.0%	0	0.0%	0	0.0%	0	0.0%	0	0.0%	0	0.0%	0	0.0%	0	0.0%	0	0.0%	1	100%		
	7th	2	0	0.0%	0	0.0%	0	0.0%	1	50.0%	0	0.0%	0	0.0%	0	0.0%	0	0.0%	1	50.0%	0	0.0%	0	0.0%	0	0.0%	0	0.0%	0	0.0%	0	0.0%	0	0.0%	0	0.0%	0	0%
	9th	4	1	25.0%	0	0.0%	0	0.0%	0	0.0%	0	0.0%	0	0.0%	0	0.0%	0	0.0%	0	0.0%	2	50.0%	0	0.0%	0	0.0%	0	0.0%	0	0.0%	0	0.0%	0	0.0%	1	25%		
	14th	0	0	0.0%	0	0.0%	0	0.0%	0	0.0%	0	0.0%	0	0.0%	0	0.0%	0	0.0%	0	0.0%	0	0.0%	0	0.0%	0	0.0%	0	0.0%	0	0.0%	0	0.0%	0	0.0%	0	0%		
	21st	20	6	30.0%	5	25.0%	0	0.0%	0	0.0%	0	0.0%	0	0.0%	0	0.0%	0	0.0%	0	0.0%	8	40.0%	0	0.0%	0	0.0%	0	0.0%	0	0.0%	0	0.0%	0	0.0%	1	5%		
	22nd	4	2	50.0%	0	0.0%	0	0.0%	0	0.0%	0	0.0%	0	0.0%	0	0.0%	0	0.0%	0	0.0%	2	50.0%	0	0.0%	0	0.0%	0	0.0%	0	0.0%	0	0.0%	0	0.0%	0	0.0%	0	0%
<b>Western Total</b>		<b>31</b>	<b>9</b>	<b>29%</b>	<b>5</b>	<b>16.1%</b>	<b>0</b>	<b>0.0%</b>	<b>1</b>	<b>3.2%</b>	<b>0</b>	<b>0.0%</b>	<b>0</b>	<b>0.0%</b>	<b>0</b>	<b>0.0%</b>	<b>0</b>	<b>0.0%</b>	<b>1</b>	<b>3.2%</b>	<b>12</b>	<b>39%</b>	<b>0</b>	<b>0.0%</b>	<b>0</b>	<b>0.0%</b>	<b>0</b>	<b>0.0%</b>	<b>0</b>	<b>0.0%</b>	<b>0</b>	<b>0.0%</b>	<b>0</b>	<b>0.0%</b>	<b>3</b>	<b>10%</b>		
<b>Individual RD Totals</b>		<b>400</b>	<b>138</b>	<b>35%</b>	<b>46</b>	<b>12%</b>	<b>6</b>	<b>1.5%</b>	<b>4</b>	<b>1.0%</b>	<b>0</b>	<b>0.0%</b>	<b>5</b>	<b>1.3%</b>	<b>0</b>	<b>0.0%</b>	<b>4</b>	<b>1.0%</b>	<b>55</b>	<b>14%</b>	<b>101</b>	<b>25%</b>	<b>1</b>	<b>0.3%</b>	<b>0</b>	<b>0.0%</b>	<b>0</b>	<b>0.0%</b>	<b>0</b>	<b>0.0%</b>	<b>0</b>	<b>0.0%</b>	<b>5</b>	<b>1.3%</b>	<b>0</b>	<b>0.0%</b>	<b>35</b>	<b>9%</b>
<b>Statewide Totals</b>		<b>400</b>	<b>184</b>	<b>46.0%</b>	<b>10</b>	<b>2.5%</b>					<b>9</b>			<b>2.3%</b>			<b>156</b>	<b>39.0%</b>			<b>1</b>			<b>0.3%</b>			<b>5</b>	<b>1.3%</b>			<b>35</b>	<b>9%</b>						

# Central Region CYDC Reason Detained by Judicial District July 2019 New Admits



■ CENTRAL REGION, 159 New Admits

■ 5th JD, 1 New Admits

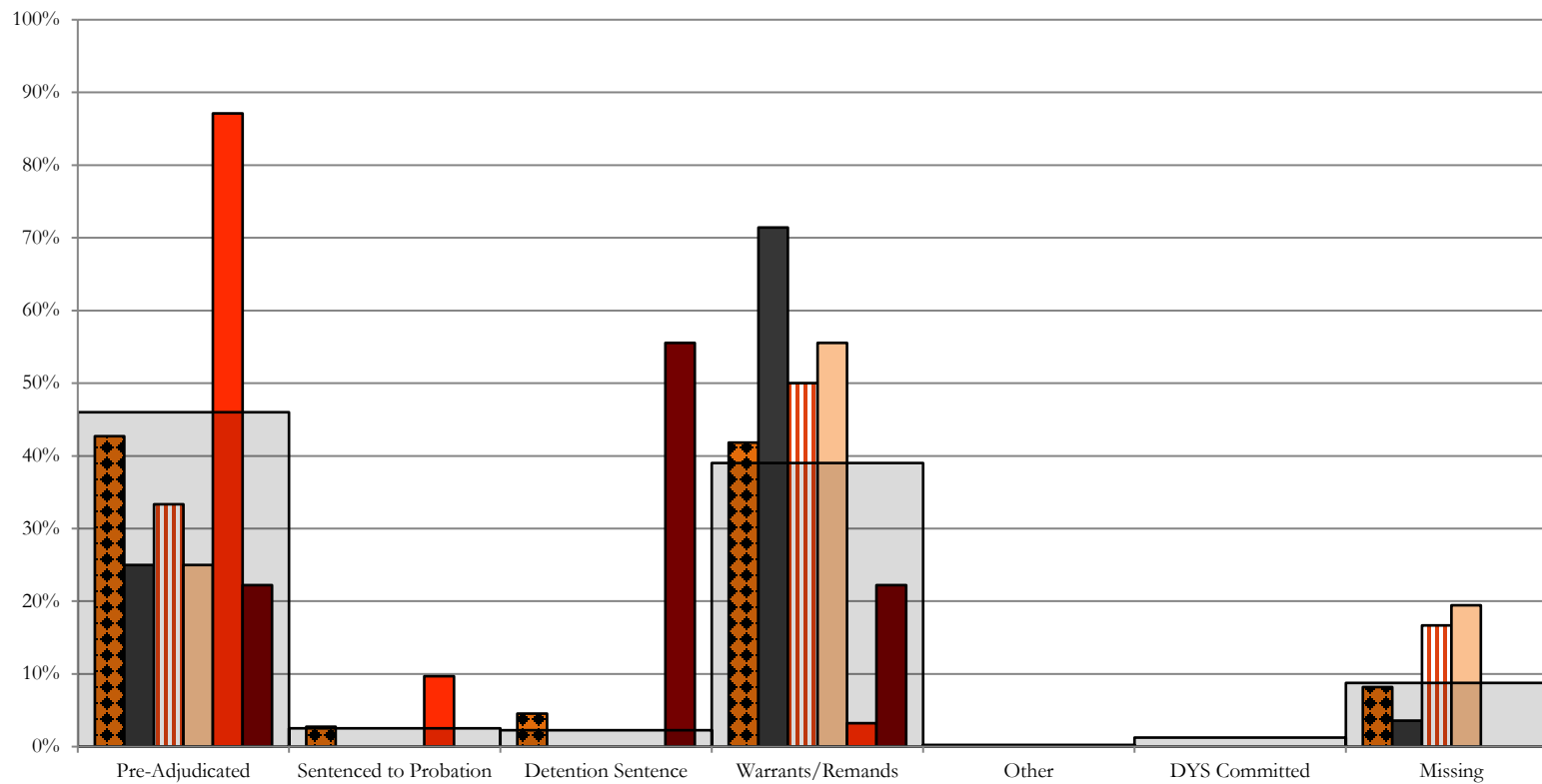
■ 18th JD, 67 New Admits

■ 1st JD, 27 New Admits

■ 2nd JD, 64 New Admits

■ STATEWIDE, 400 New Admits

## Northeast Region CYDC Reason Detained by Judicial District July 2019 New Admits



■ NORTHEAST REGION, 110 New Admits

■ 8th JD, 28 New Admits

■ 13th JD, 6 New Admits

■ 17th JD, 36 New Admits

■ 19th JD, 31 New Admits

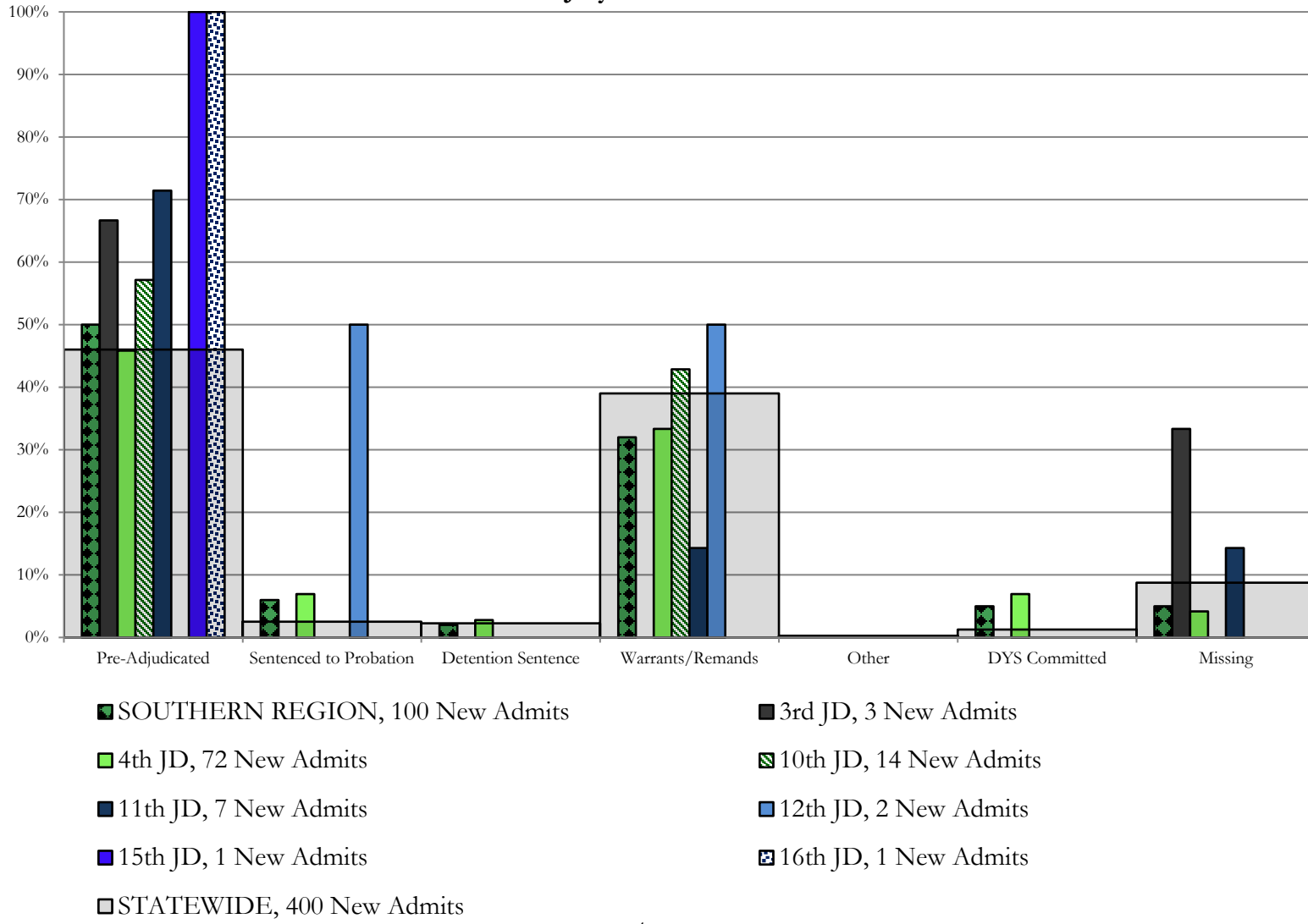
■ 20th JD, 9 New Admits

■ STATEWIDE, 400 New Admits

# Southern Region

## CYDC Reason Detained by Judicial District

### July 2019 New Admits

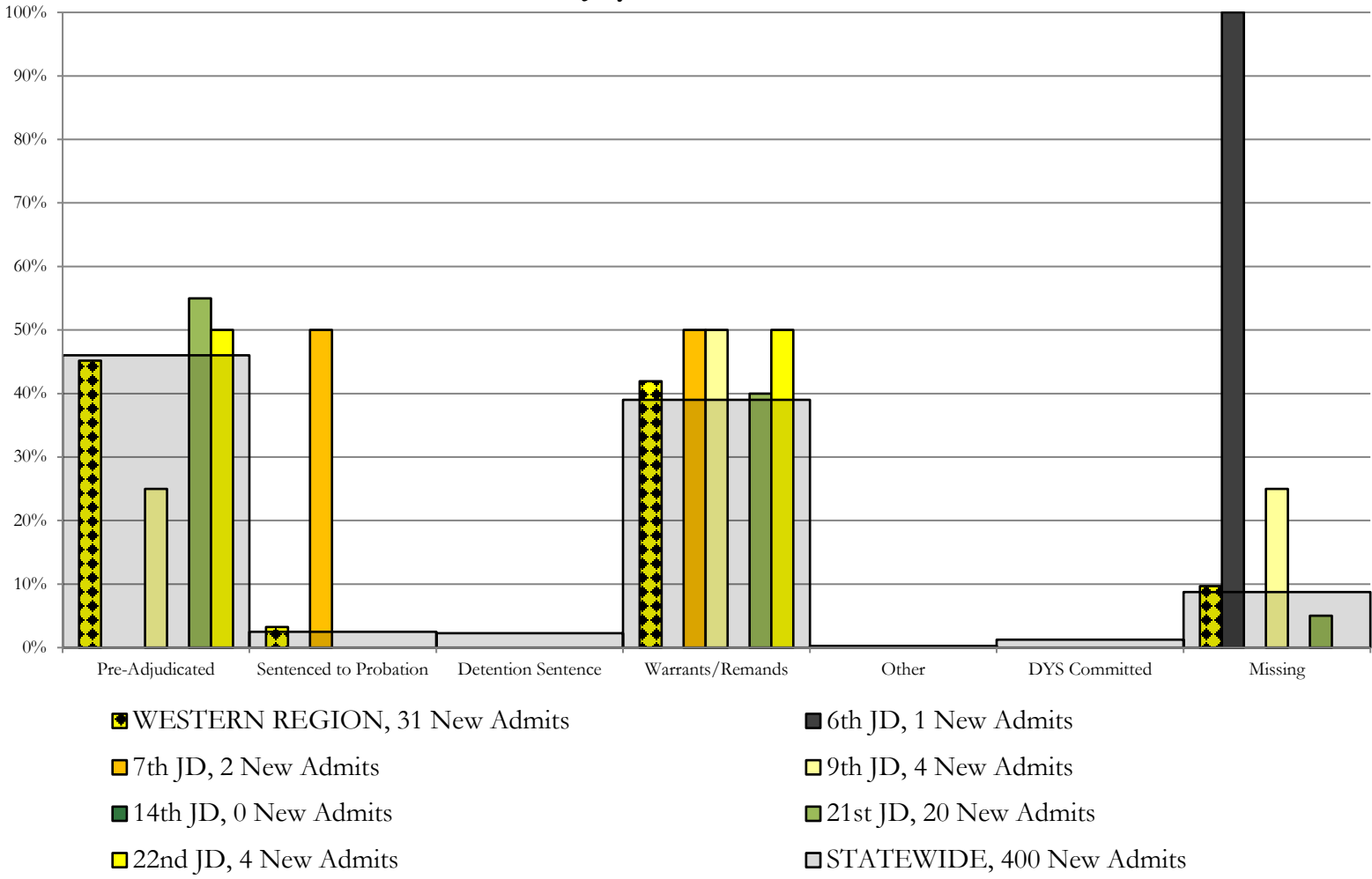




# Western Region

## CYDC Reason Detained by Judicial District

### July 2019 New Admits



# July 2019 CYDC Supplemental Report

## DYS Detention Maximum Youth Served by Judicial District<sup>1</sup>

Region	JD	Detention Capacity	Detention ADP		Maximum Youth Served on a Single Day <sup>2,3</sup>			
			July 2019	YTD	July 2019		YTD	
					Number of Youth	% of Detention Capacity	Number of Youth	% of Detention Capacity
<i>Central</i>								
	1st	35	14.0	14.0	19	54.3%	19	54.3%
	2nd	49	33.3	33.3	43	87.8%	43	87.8%
	5th	4	0.5	0.5	1	25.0%	1	25.0%
	18th	48	47.6	47.6	58	120.8%	58	120.8%
<b>Central Region</b>		<b>136</b>	<b>95.5</b>	<b>95.5</b>	<b>111</b>	<b>81.6%</b>	<b>111</b>	<b>81.6%</b>
<i>Northeast</i>								
	8th	14	12.9	12.9	18	128.6%	18	128.6%
	13th	5	3.1	3.1	5	100.0%	5	100.0%
	17th	28	24.4	24.4	29	103.6%	29	103.6%
	19th	18	11.3	11.3	16	88.9%	16	88.9%
	20th	8	6.9	6.9	8	100.0%	8	100.0%
<b>Northeast Region</b>		<b>73</b>	<b>58.5</b>	<b>58.5</b>	<b>67</b>	<b>91.8%</b>	<b>67</b>	<b>91.8%</b>
<i>Southern</i>								
	3rd	2	3.3	3.3	6	300.0%	6	300.0%
	4th	54	40.7	40.7	49	90.7%	49	90.7%
	10th	14	3.5	3.5	6	42.9%	6	42.9%
	11th	3	1.4	1.4	5	166.7%	5	166.7%
	12th	4	0.8	0.8	3	75.0%	3	75.0%
	15th	2	0.3	0.3	1	50.0%	1	50.0%
	16th	3	0.2	0.2	1	33.3%	1	33.3%
<b>Southern Region</b>		<b>82</b>	<b>50.1</b>	<b>50.1</b>	<b>59</b>	<b>72.0%</b>	<b>59</b>	<b>72.0%</b>
<i>Western</i>								
	6th	5	0.5	0.5	1	20.0%	1	20.0%
	7th	5	2.2	2.2	4	80.0%	4	80.0%
	9th	3	2.4	2.4	4	133.3%	4	133.3%
	14th	3	0.0	0.0	0	0.0%	0	0.0%
	21st	16	9.1	9.1	13	81.3%	13	81.3%
	22nd	4	2.9	2.9	5	125.0%	5	125.0%
<b>Western Region</b>		<b>36</b>	<b>17.0</b>	<b>17.0</b>	<b>24</b>	<b>66.7%</b>	<b>24</b>	<b>66.7%</b>
<i>Missing JD or Multiple JDs</i>			1.4	1.4				
<b>Statewide</b>		<b>327</b>	<b>222.4</b>	<b>222.4</b>	<b>241</b>	<b>73.7%</b>	<b>241</b>	<b>73.7%</b>

<sup>1</sup> Maximum youth served is the highest number of youth in detention on a single day during the month or fiscal year.

<sup>2</sup> Regional figures are not the sum of judicial districts, but represent the maximum count on one day for the entire region.

<sup>3</sup> State figures are not the sum of regional figures, but represent the maximum count on one day for the entire state.

## July 2019 CYDC Supplemental Report

### CYDC Community ADP by Judicial District

Region	JD	Committed		Diversion		ICJ		Municipal		Pre-Adjudicated		Sentenced		VCO		Total	
		July 2019	YTD	July 2019	YTD	July 2019	YTD	July 2019	YTD	July 2019	YTD	July 2019	YTD	July 2019	YTD	July 2019	YTD
<i>Central</i>																	
	1st	1.6	1.6	5.2	5.2	0.0	0.0	48.1	48.1	163.4	163.4	34.9	34.9	0.0	0.0	253.3	253.3
	2nd	9.3	9.3	0.0	0.0	3.3	3.3	0.0	0.0	273.1	273.1	42.6	42.6	0.0	0.0	328.3	328.3
	5th	0.0	0.0	13.6	13.6	0.0	0.0	0.0	0.0	16.0	16.0	32.5	32.5	0.0	0.0	62.2	62.2
	18th	4.6	4.6	0.9	0.9	0.0	0.0	1.2	1.2	302.7	302.7	33.9	33.9	0.0	0.0	343.4	343.4
<b>Central Total</b>		<b>15.5</b>	<b>15.5</b>	<b>19.7</b>	<b>19.7</b>	<b>3.3</b>	<b>3.3</b>	<b>49.4</b>	<b>49.4</b>	<b>755.3</b>	<b>755.3</b>	<b>143.9</b>	<b>143.9</b>	<b>0.0</b>	<b>0.0</b>	<b>987.0</b>	<b>987.0</b>
<i>Northeast</i>																	
	8th	0.0	0.0	10.3	10.3	0.0	0.0	0.0	0.0	80.7	80.7	63.1	63.1	0.0	0.0	154.1	154.1
	13th	0.0	0.0	0.0	0.0	0.0	0.0	0.0	0.0	21.2	21.2	1.5	1.5	1.0	1.0	23.7	23.7
	17th	1.0	1.0	0.0	0.0	0.0	0.0	0.0	0.0	355.1	355.1	99.3	99.3	0.0	0.0	455.3	455.3
	19th	0.3	0.3	1.0	1.0	0.0	0.0	0.0	0.0	81.2	81.2	35.9	35.9	0.0	0.0	118.5	118.5
	20th	1.0	1.0	69.7	69.7	1.0	1.0	0.0	0.0	103.2	103.2	15.8	15.8	2.0	2.0	192.7	192.7
<b>Northeast Total</b>		<b>2.3</b>	<b>2.3</b>	<b>81.0</b>	<b>81.0</b>	<b>1.0</b>	<b>1.0</b>	<b>0.0</b>	<b>0.0</b>	<b>641.3</b>	<b>641.3</b>	<b>215.6</b>	<b>215.6</b>	<b>3.0</b>	<b>3.0</b>	<b>944.3</b>	<b>944.3</b>
<i>Southern</i>																	
	3rd	0.0	0.0	0.0	0.0	0.0	0.0	0.0	0.0	26.7	26.7	5.0	5.0	0.0	0.0	31.7	31.7
	4th	2.5	2.5	0.0	0.0	0.0	0.0	37.8	37.8	124.1	124.1	35.3	35.3	0.0	0.0	199.7	199.7
	10th	0.0	0.0	0.0	0.0	1.0	1.0	3.0	3.0	20.4	20.4	5.3	5.3	0.0	0.0	29.6	29.6
	11th	1.0	1.0	0.0	0.0	0.0	0.0	8.0	8.0	25.3	25.3	27.0	27.0	2.0	2.0	63.2	63.2
	12th	0.0	0.0	3.0	3.0	0.0	0.0	1.0	1.0	6.3	6.3	1.2	1.2	0.0	0.0	11.5	11.5
	15th	0.0	0.0	4.0	4.0	0.0	0.0	0.0	0.0	1.6	1.6	9.0	9.0	0.0	0.0	14.6	14.6
	16th	0.0	0.0	0.0	0.0	0.0	0.0	0.0	0.0	6.3	6.3	2.0	2.0	12.0	12.0	20.3	20.3
<b>Southern Total</b>		<b>3.5</b>	<b>3.5</b>	<b>7.0</b>	<b>7.0</b>	<b>1.0</b>	<b>1.0</b>	<b>49.8</b>	<b>49.8</b>	<b>210.6</b>	<b>210.6</b>	<b>84.7</b>	<b>84.7</b>	<b>14.0</b>	<b>14.0</b>	<b>370.6</b>	<b>370.6</b>
<i>Western</i>																	
	6th	0.0	0.0	0.0	0.0	0.0	0.0	3.0	3.0	7.8	7.8	0.0	0.0	0.0	0.0	10.8	10.8
	7th	0.0	0.0	14.0	14.0	0.0	0.0	2.0	2.0	8.3	8.3	5.0	5.0	0.0	0.0	29.3	29.3
	9th	0.0	0.0	0.0	0.0	0.0	0.0	0.0	0.0	9.4	9.4	0.1	0.1	0.0	0.0	9.6	9.6
	14th	0.0	0.0	15.0	15.0	0.0	0.0	0.0	0.0	3.0	3.0	0.0	0.0	0.0	0.0	18.0	18.0
	21st	0.0	0.0	0.0	0.0	0.0	0.0	0.0	0.0	68.1	68.1	22.3	22.3	0.0	0.0	90.4	90.4
	22nd	0.0	0.0	0.0	0.0	0.0	0.0	0.0	0.0	4.4	4.4	14.8	14.8	0.0	0.0	19.2	19.2
<b>Western Total</b>		<b>0.0</b>	<b>0.0</b>	<b>29.0</b>	<b>29.0</b>	<b>0.0</b>	<b>0.0</b>	<b>5.0</b>	<b>5.0</b>	<b>101.1</b>	<b>101.1</b>	<b>42.2</b>	<b>42.2</b>	<b>0.0</b>	<b>0.0</b>	<b>177.3</b>	<b>177.3</b>
<b>Statewide Total</b>		<b>21.3</b>	<b>21.3</b>	<b>136.7</b>	<b>136.7</b>	<b>5.3</b>	<b>5.3</b>	<b>104.2</b>	<b>104.2</b>	<b>1708.3</b>	<b>1708.3</b>	<b>486.5</b>	<b>486.5</b>	<b>17.0</b>	<b>17.0</b>	<b>2479.3</b>	<b>2479.3</b>