

June 2019
FY 2018-2019
CYDC JDSAG SUPPLEMENTAL REPORT

Prepared by the Division of Youth Services (DYS)

Data Management & Analysis

July 29, 2019



COLORADO

Division of Youth Services

Office of Children, Youth & Families

June 2019 CYDC Supplemental Report

DYS Commitment ADP & New Commitments by Judicial District

Region	JD ¹	2019 Population Estimates ²	ADP ³		New Commitments		
			June 2019	YTD	June 2019	YTD	YTD Rate ⁴
<i>Central Region</i>							
	1st	55,734	82.1	85.3	4	51	9.2
	2nd	56,489	75.5	82.7	2	38	6.7
	5th	9,445	5.0	6.1	0	4	4.2
	18th	117,328	90.9	92.4	0	46	3.9
Central Total		238,996	253.5	266.6	6	139	5.8
<i>Northeast Region</i>							
	8th	34,282	19.6	22.6	0	8	2.3
	13th	8,510	1.6	3.1	1	2	2.4
	17th	70,426	52.8	59.2	1	23	3.3
	19th	37,897	40.5	45.8	3	26	6.9
	20th	31,849	4.0	3.8	0	2	0.6
Northeast Total		182,964	118.5	134.5	5	61	3.3
<i>Southern Region</i>							
	3rd	1,805	2.6	0.5	1	3	16.6
	4th	81,988	78.9	87.5	0	35	4.3
	10th	18,298	12.7	15.0	0	6	3.3
	11th	7,228	4.0	5.1	0	1	1.4
	12th	5,295	2.4	1.8	0	2	3.8
	15th	2,106	3.0	4.7	0	2	9.5
	16th	2,796	1.5	0.6	1	1	3.6
Southern Total		119,516	105.1	115.1	2	50	4.2
<i>Western Region</i>							
	6th	7,337	5.0	4.7	0	3	4.1
	7th	10,703	7.4	9.1	0	5	4.7
	9th	8,691	3.9	5.7	0	1	1.2
	14th	5,745	0.0	1.7	0	1	1.7
	21st	16,228	34.7	35.1	2	29	17.9
	22nd	3,215	3.3	5.1	1	2	6.2
Western Total		51,919	54.3	61.4	3	41	7.9
Statewide Total		593,395	531.4	577.6	16	291	4.9

¹ JD represents the judicial district in which the client was committed. Regional totals are a sum of their respective judicial districts. Regional totals reported here may differ slightly from those reported in the Monthly Population Report, where region is defined by active caseloads.

² Source: DOLA 2019 Estimates.

³ Due to rounding, totals shown may not be an exact sum of the subtotals.

⁴ Per 10,000 youth in the population.

June 2019 CYDC Supplemental Report

DYS Detention ADP and New Detention Admissions by Judicial District

Region	JD	2019 Population Estimates ¹	ADP		New Admits		
			June 2019	YTD	June 2019	YTD	YTD New Admit Rate ²
<i>Central Region</i>							
	1st	55,734	18.4	19.6	33	440	78.9
	2nd	56,489	45.5	41.3	55	803	142.2
	5th	9,445	2.4	1.3	3	34	36.0
	18th	117,328	53.1	44.3	82	937	79.9
Central Total		238,996	119.4	106.5	173	2,214	92.6
<i>Northeast Region</i>							
	8th	34,282	7.8	10.7	22	280	81.7
	13th	8,510	1.5	3.4	6	79	92.8
	17th	70,426	26.3	22.3	50	534	75.8
	19th	37,897	14.2	18.3	25	433	114.3
	20th	31,849	6.9	7.1	14	124	38.9
Northeast Total		182,964	56.7	61.8	117	1,450	79.3
<i>Southern Region</i>							
	3rd	1,805	3.0	2.1	5	18	99.7
	4th	81,988	49.0	45.9	55	713	87.0
	10th	18,298	7.5	7.6	15	212	115.9
	11th	7,228	1.8	2.8	3	89	123.1
	12th	5,295	1.1	2.2	1	44	83.1
	15th	2,106	0.1	1.3	0	16	76.0
	16th	2,796	0.8	1.1	0	16	57.2
Southern Total		119,516	63.3	62.9	79	1,108	92.7
<i>Western Region</i>							
	6th	7,337	0.3	1.4	2	26	35.4
	7th	10,703	1.3	2.7	3	55	51.4
	9th	8,691	3.2	2.3	1	30	34.5
	14th	5,745	0.8	0.6	0	7	12.2
	21st	16,228	7.7	12.0	9	232	143.0
	22nd	3,215	4.7	1.3	2	23	71.5
Western Total		51,919	18.0	20.3	17	373	71.8
<i>Missing JD or Multiple JDs</i>			2.0	2.5			
Statewide Total		593,395	259.5	253.9	386	5,145	86.7

¹ Source: DOLA 2019 Estimates.

² Per 10,000 youth in the population.

June 2019 CYDC Supplemental Report

DYS Detention LOS by Judicial District				
Region	JD	YTD Detention Releases	YTD LOS (days)	LOS (days) Compared to State AVG
<i>Central Region</i>				
	1st	427	16.7	-1.1
	2nd	800	15.2	-2.6
	5th	34	10.7	-7.1
	18th	930	16.6	-1.2
Central Total		2,191	16.0	-1.8
<i>Northeast Region</i>				
	8th	282	13.5	-4.3
	13th	78	15.0	-2.9
	17th	519	14.5	-3.3
	19th	426	14.0	-3.8
	20th	121	20.2	2.3
Northeast Total		1,426	14.6	-3.2
<i>Southern Region</i>				
	3rd	15	51.7	33.8
	4th	714	23.6	5.7
	10th	215	9.5	-8.3
	11th	92	8.5	-9.4
	12th	45	17.1	-0.7
	15th	19	23.2	5.3
	16th	19	23.1	5.3
Southern Total		1,119	19.7	1.9
<i>Western Region</i>				
	6th	24	18.2	0.4
	7th	54	15.4	-2.4
	9th	27	20.6	2.8
	14th	8	40.7	22.9
	21st	223	13.7	-4.1
	22nd	22	18.8	1.0
Western Total		358	15.7	-2.1
Statewide Total		5,139	17.8	-

June 2019 CYDC Supplemental Report

YTD DYS Detention ADP & Ethnicity by Judicial District

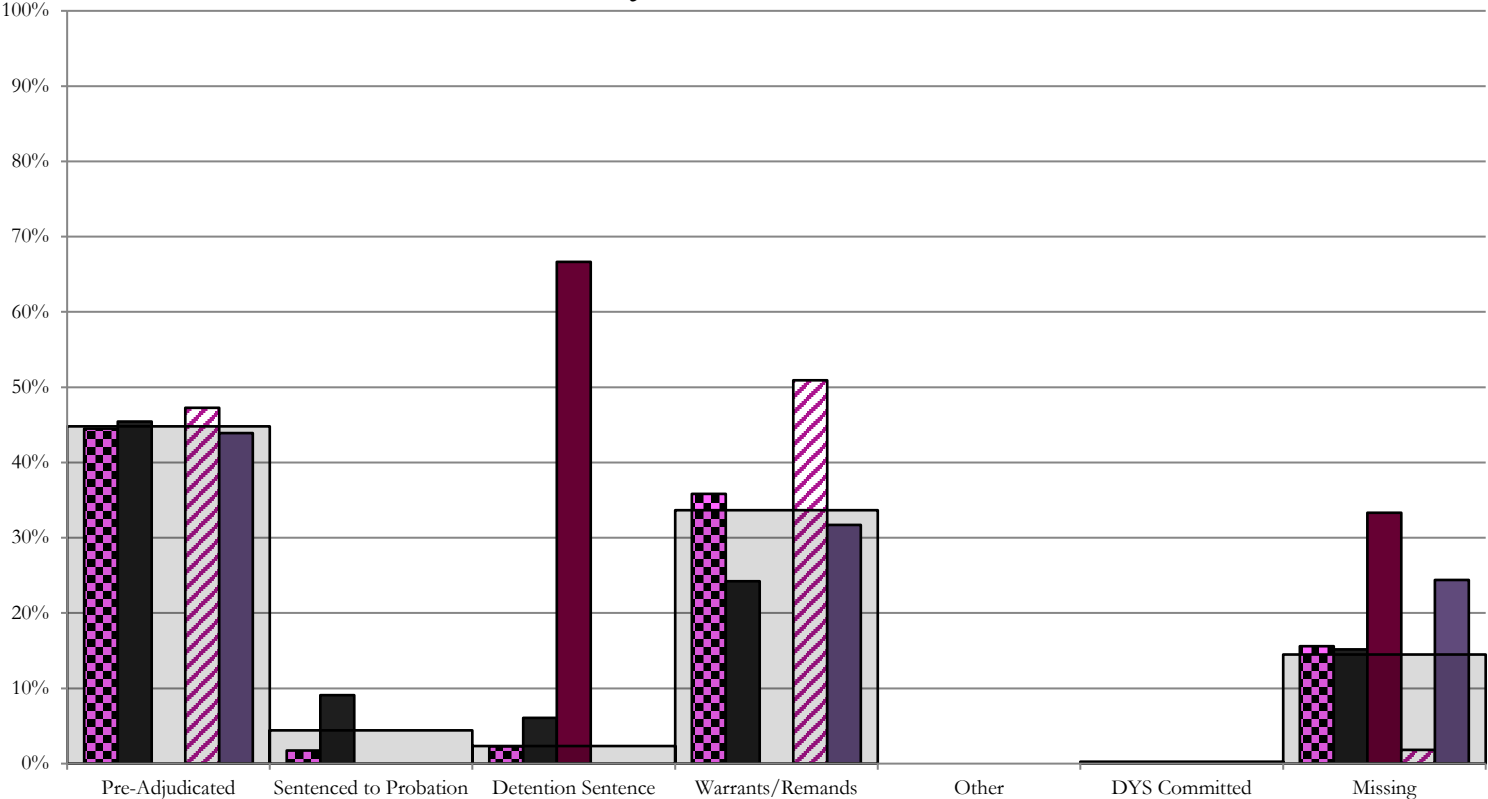
Region	JD	Anglo-American		African-American		Hispanic / Latino		Native-American		Asian-American		Other		TOTAL	
		ADP	%	ADP	%	ADP	%	ADP	%	ADP	%	ADP	%	ADP	%
Central															
	1st	8.4	42.9%	3.4	17.3%	6.6	33.6%	0.4	1.8%	0.3	1.3%	0.6	3.1%	19.6	100%
	2nd	4.8	11.7%	13.5	32.5%	18.6	45.0%	0.9	2.1%	2.6	6.2%	1.0	2.4%	41.3	100%
	5th	0.2	19.5%	0.0	0.8%	0.8	67.4%	0.0	0.0%	0.0	0.0%	0.2	12.3%	1.3	100%
	18th	14.4	32.4%	17.0	38.3%	11.7	26.4%	0.3	0.6%	0.4	0.8%	0.7	1.5%	44.3	100%
Central Total		27.8	26.6%	33.8	22.2%	37.7	43.1%	1.5	1.1%	3.2	2.1%	2.4	4.8%	106.5	100%
Northeast															
	8th	7.4	69.7%	0.4	3.7%	2.7	25.0%	0.0	0.5%	0.0	0.0%	0.1	1.1%	10.7	100%
	13th	1.8	51.8%	0.4	10.8%	1.3	37.1%	0.0	0.1%	0.0	0.1%	0.0	0.0%	3.4	100%
	17th	7.1	31.9%	3.0	13.5%	11.4	51.0%	0.0	0.1%	0.5	2.2%	0.3	1.2%	22.3	100%
	19th	6.8	37.2%	1.4	7.7%	9.2	50.1%	0.1	0.4%	0.4	2.1%	0.5	2.5%	18.3	100%
	20th	2.9	41.5%	0.6	8.7%	3.3	46.8%	0.1	0.9%	0.0	0.0%	0.2	2.1%	7.1	100%
Northeast Total		26.1	46.4%	5.8	8.9%	27.8	42.0%	0.2	0.4%	0.9	0.9%	1.0	1.4%	61.8	100%
Southern															
	3rd	0.7	33.7%	0.0	0.0%	1.4	65.8%	0.0	0.2%	0.0	0.0%	0.0	0.3%	2.1	100%
	4th	14.7	32.1%	13.3	28.9%	17.5	38.2%	0.0	0.1%	0.2	0.4%	0.1	0.3%	45.9	100%
	10th	2.9	38.5%	0.2	3.2%	4.3	57.5%	0.0	0.3%	0.0	0.0%	0.0	0.5%	7.6	100%
	11th	1.8	63.4%	0.3	9.9%	0.5	18.1%	0.0	1.8%	0.0	0.3%	0.2	6.6%	2.8	100%
	12th	0.1	6.2%	0.6	25.2%	1.5	68.4%	0.0	0.0%	0.0	0.0%	0.0	0.2%	2.2	100%
	15th	0.5	40.5%	0.1	6.6%	0.7	53.0%	0.0	0.0%	0.0	0.0%	0.0	0.0%	1.3	100%
	16th	0.1	10.0%	0.1	12.2%	0.8	73.5%	0.0	0.0%	0.0	0.0%	0.1	4.4%	1.1	100%
Southern Total		20.8	32.0%	14.6	12.3%	26.8	53.5%	0.1	0.3%	0.2	0.1%	0.4	1.7%	62.9	100%
Western															
	6th	0.4	31.0%	0.3	22.5%	0.6	40.2%	0.1	6.2%	0.0	0.0%	0.0	0.0%	1.4	100%
	7th	2.0	75.1%	0.0	0.0%	0.7	24.9%	0.0	0.0%	0.0	0.0%	0.0	0.0%	2.7	100%
	9th	1.1	48.9%	0.0	0.0%	0.7	29.5%	0.5	21.5%	0.0	0.0%	0.0	0.0%	2.3	100%
	14th	0.6	100.0%	0.0	0.0%	0.0	0.0%	0.0	0.0%	0.0	0.0%	0.0	0.0%	0.6	100%
	21st	10.1	83.9%	0.4	3.6%	1.5	12.3%	0.0	0.1%	0.0	0.0%	0.0	0.1%	12.0	100%
	22nd	0.7	55.9%	0.0	0.0%	0.5	36.3%	0.1	7.8%	0.0	0.0%	0.0	0.0%	1.3	100%
Western Total		15.0	65.8%	0.7	4.4%	3.9	23.9%	0.7	5.9%	0.0	0.0%	0.0	0.0%	20.3	100%
Missing JD Data		0.8		0.2		1.5		0.0		0.0		0.0		2.5	
Statewide Total		90.5	35.6%	55.1	21.7%	97.6	38.4%	2.5	1.0%	4.3	1.7%	3.9	1.5%	253.9	100%

June 2019 CDYC Supplemental Report

CYDC Reason Detained (RD) by Judicial District

Region	JD	Monthly New Admits	Pre-Adjudicated				Sentenced to Probation				Detention Sentence								Warrants/Remands				Other						DYS Committed		Missing							
			Felony		Misdemeanor		Technical Violator		New Charges		Probation Sentence		Detention Sentence		Valid Court Order (VCO) Truancy		Awaiting DSS (Social Services) Placement		Failure to Appear (FTA)		Failure to Comply (FTC)		Interstate Compact on Juveniles (ICJ) Hold		Immigration Hold		No Bond Hold		Out-of-Country Warrant		Institutional		Parole		Missing			
			#	%	#	%	#	%	#	%	#	%	#	%	#	%	#	%	#	%	#	%	#	%	#	%	#	%	#	%	#	%	#	%	#	%		
Central Region																																						
	1st	33	12	36.4%	3	9.1%	3	9.1%	0	0.0%	0	0.0%	2	6.1%	0	0.0%	0	0.0%	1	3.0%	7	21.2%	0	0.0%	0	0.0%	0	0.0%	0	0.0%	0	0.0%	0	0.0%	5	15.2%		
	2nd	55	20	36.4%	6	10.9%	0	0.0%	0	0.0%	0	0.0%	0	0.0%	0	0.0%	0	0.0%	12	21.8%	16	29.1%	0	0.0%	0	0.0%	0	0.0%	0	0.0%	0	0.0%	0	0.0%	0	0.0%	1	1.8%
	5th	3	0	0.0%	0	0.0%	0	0.0%	0	0.0%	0	0.0%	2	66.7%	0	0.0%	0	0.0%	0	0.0%	0	0.0%	0	0.0%	0	0.0%	0	0.0%	0	0.0%	0	0.0%	0	0.0%	0	0.0%	1	33.3%
	18th	82	24	29.3%	12	14.6%	0	0.0%	0	0.0%	0	0.0%	0	0.0%	0	0.0%	0	0.0%	6	7.3%	20	24.4%	0	0.0%	0	0.0%	0	0.0%	0	0.0%	0	0.0%	0	0.0%	0	0.0%	20	24.4%
Central Total		173	56	32%	21	12%	3	1.7%	0	0.0%	0	0.0%	4	2.3%	0	0.0%	0	0.0%	19	11%	43	25%	0	0.0%	0	0.0%	0	0.0%	0	0.0%	0	0.0%	0	0.0%	0	0.0%	27	15.6%
Northeast Region																																						
	8th	22	3	13.6%	5	22.7%	0	0.0%	0	0.0%	0	0.0%	0	0.0%	0	0.0%	0	0.0%	0	0.0%	10	45.5%	0	0.0%	0	0.0%	0	0.0%	0	0.0%	0	0.0%	0	0.0%	0	0.0%	4	18.2%
	13th	6	2	33.3%	0	0.0%	0	0.0%	0	0.0%	0	0.0%	0	0.0%	0	0.0%	0	0.0%	0	0.0%	1	16.7%	0	0.0%	0	0.0%	0	0.0%	0	0.0%	0	0.0%	0	0.0%	0	0.0%	3	50.0%
	17th	50	10	20.0%	6	12.0%	0	0.0%	0	0.0%	0	0.0%	0	0.0%	0	0.0%	0	0.0%	6	12.0%	17	34.0%	0	0.0%	0	0.0%	0	0.0%	0	0.0%	0	0.0%	0	0.0%	0	0.0%	11	22.0%
	19th	25	10	40.0%	3	12.0%	7	28.0%	0	0.0%	0	0.0%	0	0.0%	0	0.0%	0	0.0%	0	0.0%	4	16.0%	0	0.0%	0	0.0%	0	0.0%	0	0.0%	0	0.0%	0	0.0%	0	0.0%	1	4.0%
	20th	14	2	14.3%	1	7.1%	2	14.3%	0	0.0%	0	0.0%	1	7.1%	0	0.0%	2	14.3%	0	0.0%	3	21.4%	0	0.0%	0	0.0%	0	0.0%	0	0.0%	0	0.0%	0	0.0%	0	0.0%	3	21.4%
Northeast Total		117	27	23%	15	13%	9	7.7%	0	0.0%	0	0.0%	1	0.9%	0	0.0%	2	1.7%	6	5.1%	35	30%	0	0.0%	0	0.0%	0	0.0%	0	0.0%	0	0.0%	0	0.0%	0	0.0%	22	19%
Southern Region																																						
	3rd	5	4	80.0%	0	0.0%	0	0.0%	0	0.0%	0	0.0%	0	0.0%	0	0.0%	0	0.0%	0	0.0%	1	20.0%	0	0.0%	0	0.0%	0	0.0%	0	0.0%	0	0.0%	0	0.0%	0	0.0%	0	0.0%
	4th	55	25	45.5%	7	12.7%	0	0.0%	5	9.1%	0	0.0%	1	1.8%	0	0.0%	0	0.0%	4	7.3%	11	20.0%	0	0.0%	0	0.0%	0	0.0%	0	0.0%	0	0.0%	0	0.0%	0	0.0%	2	3.6%
	10th	15	8	53.3%	1	6.7%	0	0.0%	0	0.0%	0	0.0%	1	6.7%	0	0.0%	0	0.0%	1	6.7%	3	20.0%	0	0.0%	0	0.0%	0	0.0%	0	0.0%	1	6.7%	0	0.0%	0	0.0%	0	0.0%
	11th	3	0	0.0%	1	33.3%	0	0.0%	0	0.0%	0	0.0%	0	0.0%	0	0.0%	0	0.0%	0	0.0%	1	33.3%	0	0.0%	0	0.0%	0	0.0%	0	0.0%	0	0.0%	0	0.0%	0	0.0%	1	33.3%
	12th	1	0	0.0%	1	100.0%	0	0.0%	0	0.0%	0	0.0%	0	0.0%	0	0.0%	0	0.0%	0	0.0%	0	0.0%	0	0.0%	0	0.0%	0	0.0%	0	0.0%	0	0.0%	0	0.0%	0	0.0%	0	0.0%
	15th	0	0	0.0%	0	0.0%	0	0.0%	0	0.0%	0	0.0%	0	0.0%	0	0.0%	0	0.0%	0	0.0%	0	0.0%	0	0.0%	0	0.0%	0	0.0%	0	0.0%	0	0.0%	0	0.0%	0	0.0%	0	0.0%
	16th	0	0	0.0%	0	0.0%	0	0.0%	0	0.0%	0	0.0%	0	0.0%	0	0.0%	0	0.0%	0	0.0%	0	0.0%	0	0.0%	0	0.0%	0	0.0%	0	0.0%	0	0.0%	0	0.0%	0	0.0%	0	0.0%
Southern Total		79	37	47%	10	13%	0	0.0%	5	6.3%	0	0.0%	2	2.5%	0	0.0%	0	0.0%	5	6%	16	20%	0	0.0%	0	0.0%	0	0.0%	0	0.0%	0	0.0%	1	1.3%	0	0.0%	3	4%
Western Region																																						
	6th	2	2	100.0%	0	0.0%	0	0.0%	0	0.0%	0	0.0%	0	0.0%	0	0.0%	0	0.0%	0	0.0%	0	0.0%	0	0.0%	0	0.0%	0	0.0%	0	0.0%	0	0.0%	0	0.0%	0	0.0%	0	0%
	7th	3	0	0.0%	0	0.0%	0	0.0%	0	0.0%	0	0.0%	0	0.0%	0	0.0%	0	0.0%	0	0.0%	1	33.3%	0	0.0%	0	0.0%	0	0.0%	0	0.0%	0	0.0%	0	0.0%	0	0.0%	2	67%
	9th	1	0	0.0%	0	0.0%	0	0.0%	0	0.0%	0	0.0%	0	0.0%	0	0.0%	0	0.0%	0	0.0%	1	100.0%	0	0.0%	0	0.0%	0	0.0%	0	0.0%	0	0.0%	0	0.0%	0	0.0%	0	0%
	14th	0	0	0.0%	0	0.0%	0	0.0%	0	0.0%	0	0.0%	0	0.0%	0	0.0%	0	0.0%	0	0.0%	0	0.0%	0	0.0%	0	0.0%	0	0.0%	0	0.0%	0	0.0%	0	0.0%	0	0.0%	0	0%
	21st	9	3	33.3%	1	11.1%	0	0.0%	0	0.0%	0	0.0%	0	0.0%	0	0.0%	0	0.0%	1	11.1%	3	33.3%	0	0.0%	0	0.0%	0	0.0%	0	0.0%	0	0.0%	0	0.0%	0	0.0%	1	11%
	22nd	2	1	50.0%	0	0.0%	0	0.0%	0	0.0%	0	0.0%	0	0.0%	0	0.0%	0	0.0%	0	0.0%	0	0.0%	0	0.0%	0	0.0%	0	0.0%	0	0.0%	0	0.0%	0	0.0%	0	0.0%	1	50%
Western Total		17	6	35%	1	5.9%	0	0.0%	0	0.0%	0	0.0%	0	0.0%	0	0.0%	0	0.0%	1	5.9%	5	29%	0	0.0%	0	0.0%	0	0.0%	0	0.0%	0	0.0%	0	0.0%	0	0.0%	4	24%
Individual RD Totals		386	126	33%	47	12%	12	3.1%	5	1.3%	0	0.0%	7	1.8%	0	0.0%	2	0.5%	31	8%	99	26%	0	0.0%	0	0.0%	0	0.0%	0	0.0%	0	0.0%	1	0.3%	0	0.0%	56	15%
Statewide Totals		386	173	44.8%	17	4.4%	9	2.3%	0	0.0%	0	0.0%	9	2.3%	0	0.0%	2	0.5%	130	33.7%	0	0.0%	0	0.0%	0	0.0%	0	0.0%	0	0.0%	1	0.3%	0	0.0%	56	15%		

Central Region CYDC Reason Detained by Judicial District June 2019 New Admits



■ CENTRAL REGION, 173 New Admits

■ 1st JD, 33 New Admits

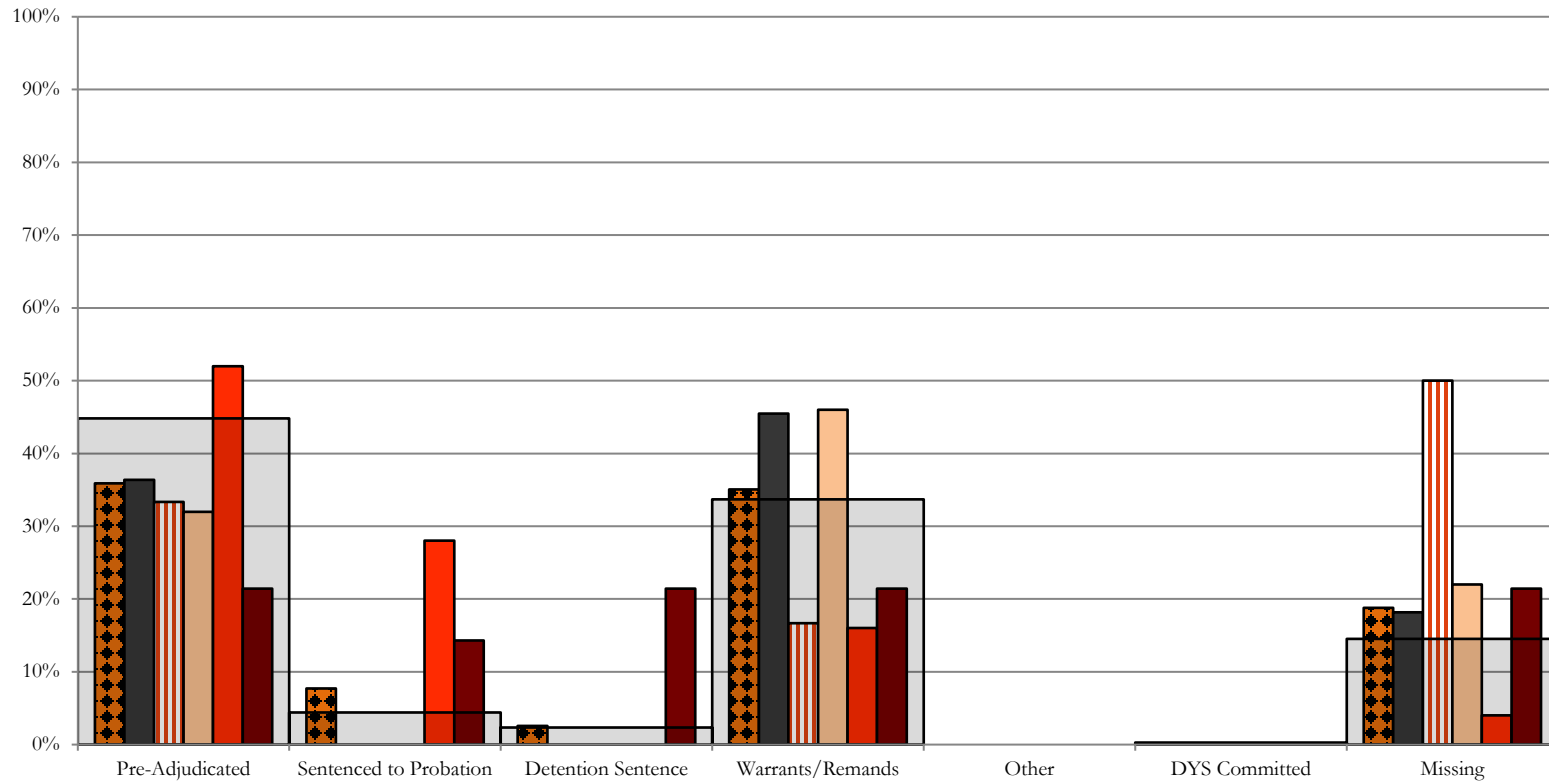
■ 5th JD, 3 New Admits

■ 2nd JD, 55 New Admits

■ 18th JD, 82 New Admits

■ STATEWIDE, 386 New Admits

Northeast Region CYDC Reason Detained by Judicial District June 2019 New Admits



■ NORTHEAST REGION, 117 New Admits

■ 8th JD, 22 New Admits

■ 13th JD, 6 New Admits

■ 17th JD, 50 New Admits

■ 19th JD, 25 New Admits

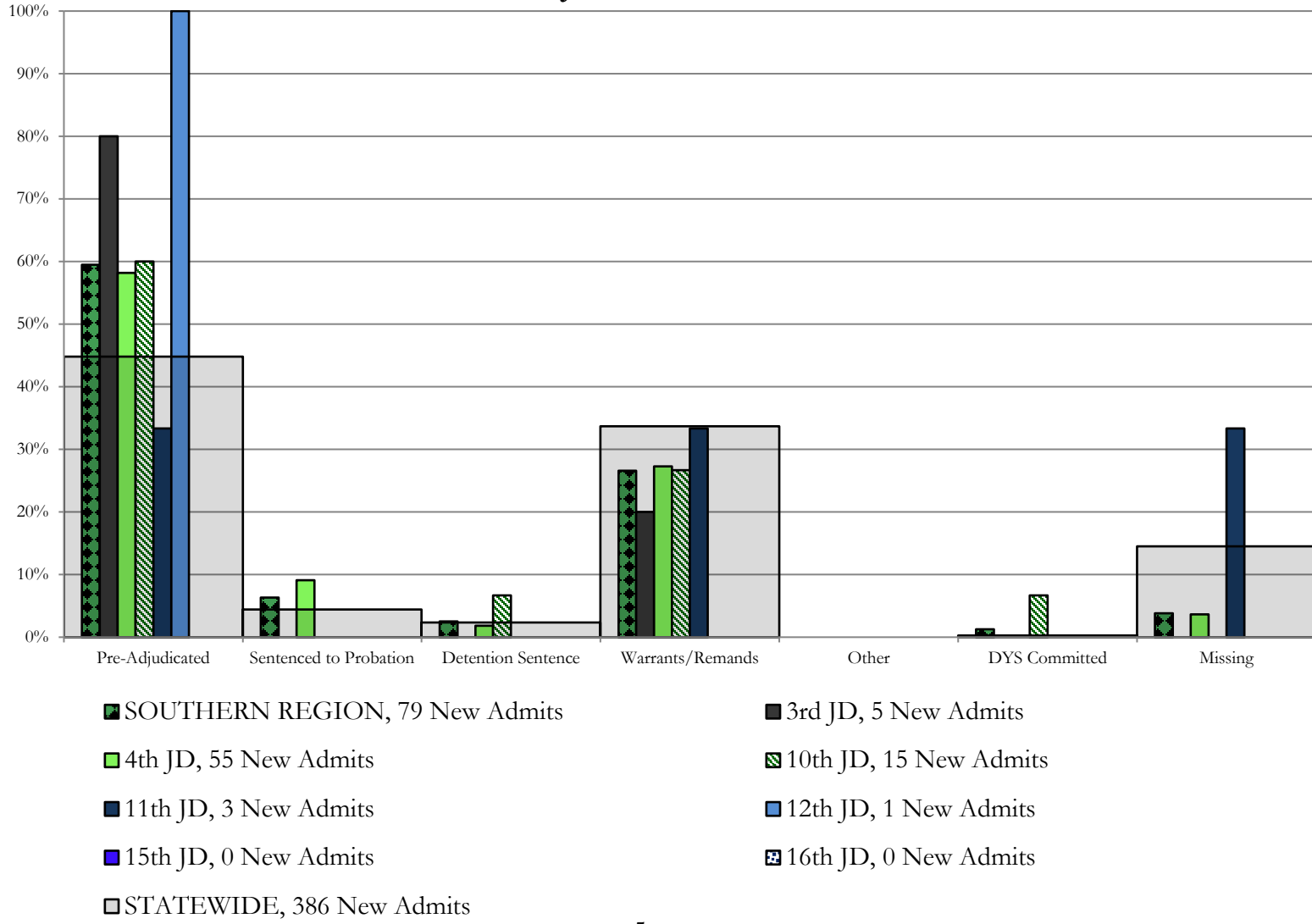
■ 20th JD, 14 New Admits

■ STATEWIDE, 386 New Admits

Southern Region

CYDC Reason Detained by Judicial District

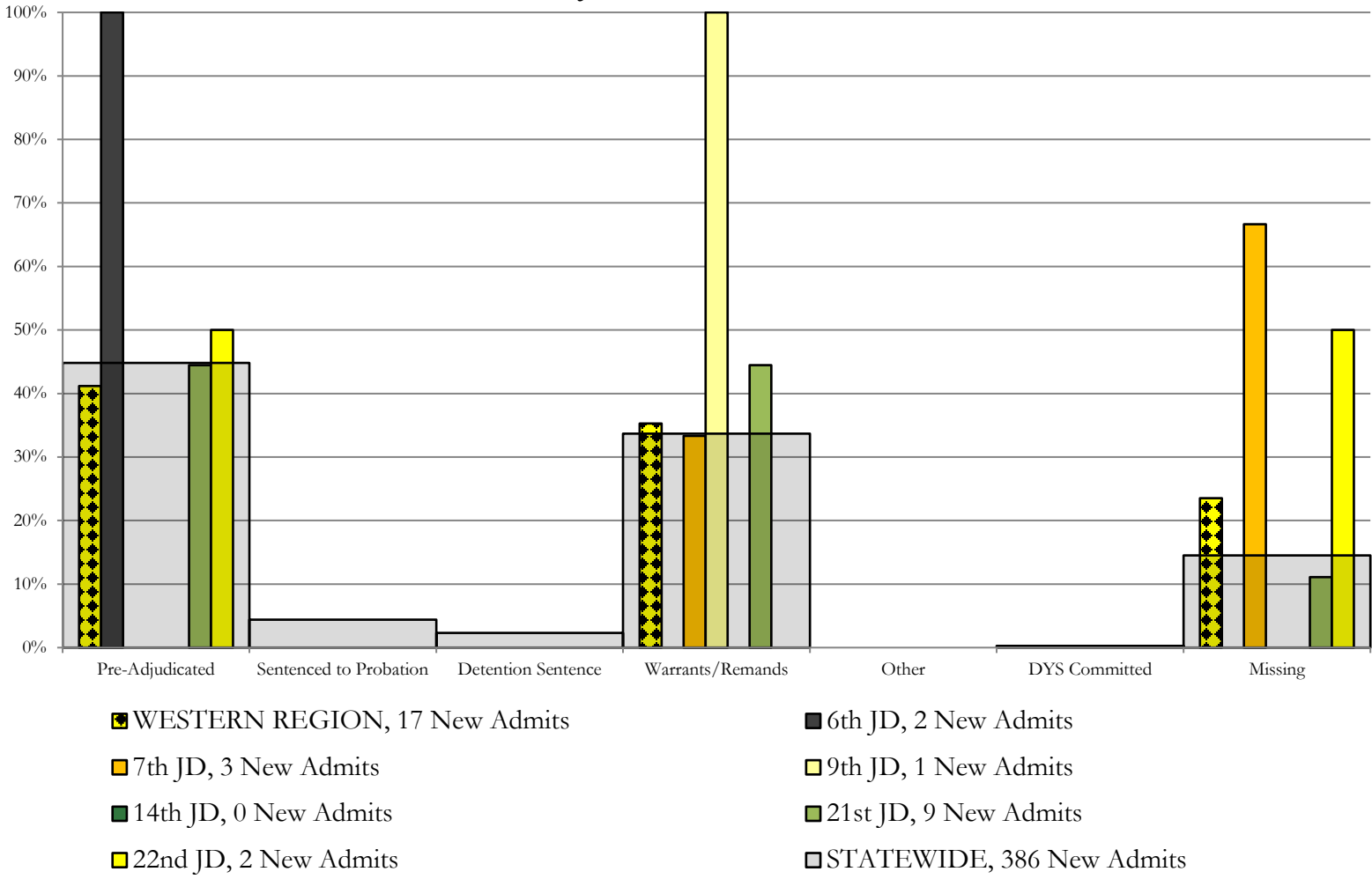
June 2019 New Admits



Western Region

CYDC Reason Detained by Judicial District

June 2019 New Admits



June 2019 CYDC Supplemental Report

CYDC Reason Detained (RD) by Judicial District Year to Date

Region	JD	Year to Date New Admits	Pre-Adjudicated				Sentenced to Probation				Detention Sentence						Warrants/Remands				Other				DYS Committed				Missing					
			Felony		Misdemeanor		Technical Violator		New Charges		Probation Sentence		Detention Sentence		Valid Court Order (VCO) Truancy		Awaiting DSS (Social Services) Placement		Failure to Appear (FTA)		Failure to Comply (FTC)		Interstate Compact on Juveniles (ICJ) Hold		Immigration Hold		Institutional		Parole		Missing			
			#	%	#	%	#	%	#	%	#	%	#	%	#	%	#	%	#	%	#	%	#	%	#	%	#	%	#	%	#	%	#	%
Central Region																																		
	1st	440	122	27.7%	45	10.2%	81	18.4%	2	0.5%	0	0.0%	30	6.8%	0	0.0%	0	0.0%	23	5.2%	102	23.2%	1	0.2%	0	0.0%	0	0.0%	0	0.0%	0	0.0%	34	7.7%
	2nd	803	363	45.2%	64	8.0%	1	0.1%	0	0.0%	0	0.0%	2	0.2%	0	0.0%	0	0.0%	84	10.5%	239	29.8%	11	1.4%	0	0.0%	3	0.4%	1	0.1%	35	4.4%		
	5th	34	12	35.3%	4	11.8%	2	5.9%	0	0.0%	0	0.0%	5	14.7%	0	0.0%	0	0.0%	0	0.0%	6	17.6%	1	2.9%	0	0.0%	0	0.0%	0	0.0%	4	11.8%		
	18th	937	265	28.3%	178	19.0%	0	0.0%	0	0.0%	0	0.0%	14	1.5%	0	0.0%	0	0.0%	78	8.3%	291	31.1%	13	1.4%	0	0.0%	6	0.6%	1	0.1%	91	9.7%		
Central Total		2,214	762	34.4%	291	13.1%	84	3.8%	2	0.1%	0	0.0%	51	2.3%	0	0.0%	0	0.0%	185	8.4%	638	28.8%	26	1.2%	0	0.0%	9	0.4%	2	0.1%	164	7.4%		
Northeast Region																																		
	8th	280	61	21.8%	36	12.9%	0	0.0%	0	0.0%	0	0.0%	12	4.3%	0	0.0%	0	0.0%	27	9.6%	126	45.0%	0	0.0%	0	0.0%	1	0.4%	1	0.4%	16	5.7%		
	13th	79	39	49.4%	18	22.8%	0	0.0%	0	0.0%	0	0.0%	0	0.0%	0	0.0%	0	0.0%	0	0.0%	19	24.1%	0	0.0%	0	0.0%	0	0.0%	0	0.0%	3	3.8%		
	17th	534	147	27.5%	39	7.3%	2	0.4%	0	0.0%	0	0.0%	3	0.6%	0	0.0%	0	0.0%	47	8.8%	178	33.3%	0	0.0%	0	0.0%	0	0.0%	0	0.0%	118	22.1%		
	19th	433	142	32.8%	65	15.0%	114	26.3%	1	0.2%	0	0.0%	6	1.4%	0	0.0%	1	0.2%	16	3.7%	80	18.5%	0	0.0%	0	0.0%	0	0.0%	0	0.0%	8	1.8%		
	20th	124	37	29.8%	7	5.6%	9	7.3%	0	0.0%	0	0.0%	13	10.5%	0	0.0%	14	11.3%	3	2.4%	23	18.5%	0	0.0%	0	0.0%	0	0.0%	0	0.0%	18	14.5%		
Northeast Total		1,450	426	29.4%	165	11.4%	125	8.6%	1	0.1%	0	0.0%	34	2.3%	0	0.0%	15	1.0%	93	6.4%	426	29.4%	0	0.0%	0	0.0%	1	0.1%	1	0.1%	163	11.2%		
Southern Region																																		
	3rd	18	13	72.2%	1	5.6%	2	11.1%	0	0.0%	0	0.0%	0	0.0%	0	0.0%	0	0.0%	0	0.0%	2	11.1%	0	0.0%	0	0.0%	0	0.0%	0	0.0%	0	0.0%		
	4th	713	303	42.5%	79	11.1%	0	0.0%	23	3.2%	0	0.0%	9	1.3%	0	0.0%	1	0.1%	64	9.0%	175	24.5%	0	0.0%	0	0.0%	22	3.1%	2	0.3%	35	4.9%		
	10th	212	70	33.0%	27	12.7%	1	0.5%	2	0.9%	0	0.0%	9	4.2%	0	0.0%	0	0.0%	24	11.3%	74	34.9%	0	0.0%	0	0.0%	1	0.5%	0	0.0%	4	1.9%		
	11th	89	40	44.9%	12	13.5%	0	0.0%	0	0.0%	0	0.0%	2	2.2%	0	0.0%	0	0.0%	7	7.9%	15	16.9%	0	0.0%	0	0.0%	0	0.0%	0	0.0%	13	14.6%		
	12th	44	16	36.4%	8	18.2%	0	0.0%	0	0.0%	0	0.0%	1	2.3%	0	0.0%	0	0.0%	5	11.4%	7	15.9%	0	0.0%	0	0.0%	0	0.0%	0	0.0%	7	15.9%		
	15th	16	1	6.3%	0	0.0%	0	0.0%	0	0.0%	0	0.0%	1	6.3%	0	0.0%	0	0.0%	6	37.5%	6	37.5%	0	0.0%	0	0.0%	0	0.0%	0	0.0%	2	12.5%		
	16th	16	6	37.5%	2	12.5%	0	0.0%	2	12.5%	0	0.0%	2	12.5%	0	0.0%	0	0.0%	1	6.3%	2	12.5%	0	0.0%	0	0.0%	0	0.0%	0	0.0%	1	6.3%		
Southern Total		1,108	449	40.5%	129	11.6%	3	0.3%	27	2.4%	0	0.0%	24	2.2%	0	0.0%	1	0.1%	107	9.7%	281	25.4%	0	0.0%	0	0.0%	23	2.1%	2	0.2%	62	5.6%		
Western Region																																		
	6th	26	10	38.5%	1	3.8%	3	11.5%	0	0.0%	0	0.0%	0	0.0%	0	0.0%	0	0.0%	0	0.0%	2	7.7%	0	0.0%	0	0.0%	0	0.0%	0	0.0%	10	38.5%		
	7th	55	23	41.8%	9	16.4%	0	0.0%	0	0.0%	0	0.0%	1	1.8%	0	0.0%	0	0.0%	4	7.3%	9	16.4%	0	0.0%	0	0.0%	0	0.0%	0	0.0%	9	16.4%		
	9th	30	11	36.7%	3	10.0%	3	10.0%	0	0.0%	0	0.0%	0	0.0%	0	0.0%	0	0.0%	2	6.7%	9	30.0%	0	0.0%	0	0.0%	0	0.0%	0	0.0%	2	6.7%		
	14th	7	3	42.9%	1	14.3%	0	0.0%	1	14.3%	0	0.0%	0	0.0%	0	0.0%	0	0.0%	0	0.0%	1	14.3%	0	0.0%	0	0.0%	0	0.0%	0	0.0%	1	14.3%		
	21st	232	54	23.3%	37	15.9%	1	0.4%	0	0.0%	0	0.0%	4	1.7%	0	0.0%	0	0.0%	16	6.9%	106	45.7%	0	0.0%	0	0.0%	0	0.0%	0	0.0%	14	6.0%		
	22nd	23	6	26.1%	1	4.3%	2	8.7%	0	0.0%	0	0.0%	0	0.0%	0	0.0%	0	0.0%	0	0.0%	3	13.0%	0	0.0%	0	0.0%	0	0.0%	0	0.0%	11	47.8%		
Western Total		373	107	28.7%	52	13.9%	9	2.4%	1	0.3%	0	0.0%	5	1.3%	0	0.0%	0	0.0%	22	5.9%	130	34.9%	0	0.0%	0	0.0%	0	0.0%	0	0.0%	47	12.6%		
Individual RD Totals		5,145	1744	33.9%	637	12.4%	221	4.3%	31	0.6%	0	0.0%	114	2.2%	0	0.0%	16	0.3%	407	7.9%	1475	28.7%	26	0.5%	0	0.0%	33	0.6%	5	0.1%	436	8.5%		
Statewide Totals		5,145	2,381	46.3%	252	4.9%	130	2.5%	0	0.0%	0	0.0%	114	2.2%	0	0.0%	16	0.3%	1882	36.6%	1475	28.7%	26	0.5%	0	0.0%	38	0.7%	5	0.1%	436	8.5%		

June 2019 CYDC Supplemental Report

DYS Detention Maximum Youth Served by Judicial District¹

Region	JD	Detention Capacity	Detention ADP		Maximum Youth Served on a Single Day ^{2,3}			
			June 2019	YTD	June 2019		YTD	
					Number of Youth	% of Detention Capacity	Number of Youth	% of Detention Capacity
<i>Central Region</i>								
	1st	37	18.4	19.6	23	62.2%	34	91.9%
	2nd	64	45.5	41.3	54	84.4%	59	92.2%
	5th	4	2.4	1.3	4	100.0%	5	125.0%
	18th	61	53.1	44.3	59	96.7%	59	96.7%
Central Region		166	119.4	106.5	131	78.9%	134	80.7%
<i>Northeast Region</i>								
	8th	21	7.8	10.7	11	52.4%	18	85.7%
	13th	5	1.5	3.4	4	80.0%	9	180.0%
	17th	30	26.3	22.3	30	100.0%	30	100.0%
	19th	25	14.2	18.3	21	84.0%	27	108.0%
	20th	13	6.9	7.1	13	100.0%	13	100.0%
Northeast Region		94	56.7	61.8	68	72.3%	78	83.0%
<i>Southern Region</i>								
	3rd	2	3.0	2.1	6	300.0%	6	300.0%
	4th	51	49.0	45.9	57	111.8%	57	111.8%
	10th	13	7.5	7.6	11	84.6%	14	107.7%
	11th	8	1.8	2.8	4	50.0%	7	87.5%
	12th	4	1.1	2.2	2	50.0%	5	125.0%
	15th	2	0.1	1.3	1	50.0%	4	200.0%
	16th	3	0.8	1.1	2	66.7%	3	100.0%
Southern Region		83	63.3	62.9	76	91.6%	80	96.4%
<i>Western Region</i>								
	6th	5	0.3	1.4	1	20.0%	4	80.0%
	7th	7	1.3	2.7	3	42.9%	6	85.7%
	9th	6	3.2	2.3	4	66.7%	6	100.0%
	14th	3	0.8	0.6	1	33.3%	3	100.0%
	21st	14	7.7	12.0	11	78.6%	17	121.4%
	22nd	4	4.7	1.3	7	175.0%	7	175.0%
Western Region		39	18.0	20.3	21	53.8%	28	71.8%
<i>Missing JD or Multiple JDs</i>			2.0	2.5				
Statewide		382	259.5	253.9	288	75.4%	289	75.7%

¹ Maximum youth served is the highest number of youth in detention on a single day during the month or fiscal year.

² Regional figures are not the sum of judicial districts, but represent the maximum count on one day for the entire region.

³ State figures are not the sum of regional figures, but represent the maximum count on one day for the entire state.

June 2019 CYDC Supplemental Report

CYDC Community ADP by Judicial District

Region	JD	Committed		Diversion		ICJ		Municipal		Pre-Adjudicated		Sentenced		VCO		Total	
		June 2019	YTD	June 2019	YTD	June 2019	YTD	June 2019	YTD	June 2019	YTD	June 2019	YTD	June 2019	YTD	June 2019	YTD
<i>Central Region</i>																	
	1st	1.0	0.7	3.7	1.2	0.0	0.0	37.2	43.2	161.0	143.1	38.4	32.3	0.0	0.0	241.3	220.6
	2nd	8.0	2.0	0.0	0.0	3.0	0.5	0.0	0.0	239.1	142.6	43.2	19.4	0.0	0.0	293.3	164.5
	5th	0.0	0.0	12.7	11.8	0.0	0.0	0.0	0.0	15.5	8.5	34.0	33.4	0.0	0.0	62.3	53.6
	18th	3.0	1.5	1.5	0.1	0.0	0.1	1.0	0.3	305.0	265.2	39.8	27.0	0.0	0.0	350.2	294.1
Central Total		12.0	4.2	17.9	13.1	3.0	0.6	38.2	43.5	720.6	559.4	155.3	112.0	0.0	0.0	947.1	732.8
<i>Northeast Region</i>																	
	8th	0.0	0.0	8.4	4.5	0.0	0.0	0.0	0.0	80.7	54.7	54.0	36.7	0.0	0.0	143.1	95.9
	13th	0.0	0.0	0.0	0.0	0.0	0.0	23.6	14.6	21.8	25.2	0.5	2.3	2.0	2.2	47.9	44.3
	17th	1.0	0.7	0.0	0.0	0.0	0.0	0.0	0.0	335.9	269.0	96.5	85.1	0.0	0.0	433.4	354.8
	19th	0.3	0.3	1.0	2.3	0.0	0.1	0.5	2.7	76.1	62.1	39.1	33.5	1.0	1.0	118.1	102.0
	20th	1.4	2.0	2.0	2.9	0.0	0.0	0.0	0.0	88.9	53.6	14.0	14.6	2.0	4.1	108.3	77.3
Northeast Total		2.7	3.1	11.4	9.7	0.0	0.1	24.2	17.3	603.4	464.7	204.1	172.2	5.0	7.3	850.7	674.3
<i>Southern Region</i>																	
	3rd	0.0	0.0	0.0	0.0	0.0	0.0	0.0	0.0	21.4	10.4	5.4	6.2	0.0	0.0	26.8	16.5
	4th	2.0	2.2	0.0	0.0	0.0	0.0	32.8	28.3	164.6	127.8	46.7	36.9	0.0	0.0	246.2	195.3
	10th	0.0	0.0	0.0	0.2	1.0	1.0	3.0	2.1	20.9	22.6	7.0	7.8	0.3	1.1	32.3	34.8
	11th	1.0	1.0	0.0	0.0	0.0	0.0	7.0	8.4	38.9	28.6	27.4	20.7	2.0	0.3	76.3	59.0
	12th	0.0	0.0	3.0	2.3	0.0	0.0	0.7	3.4	10.1	11.5	1.1	1.0	0.0	0.1	14.9	18.2
	15th	0.0	0.0	1.0	1.1	0.0	0.0	0.0	0.0	1.9	2.6	15.4	8.5	0.0	0.0	18.3	12.3
	16th	0.0	0.0	0.0	0.0	0.0	0.0	0.0	0.0	6.0	5.2	2.0	1.8	12.0	13.6	20.0	20.7
Southern Total		3.0	3.3	4.0	3.6	1.0	1.0	43.5	42.1	263.7	208.8	105.1	82.9	14.3	15.2	434.6	356.9
<i>Western Region</i>																	
	6th	0.0	0.0	0.0	0.0	0.0	0.0	1.6	0.4	8.2	6.4	0.0	0.1	0.0	0.0	9.7	6.9
	7th	0.0	0.0	14.4	10.6	0.0	0.0	1.9	1.1	7.3	10.4	4.2	8.6	0.0	0.0	27.8	30.6
	9th	0.0	0.0	0.0	1.0	0.0	0.0	1.0	4.9	7.7	8.9	0.1	1.9	0.0	0.0	8.8	16.6
	14th	0.0	0.0	15.0	8.0	0.0	0.0	0.0	2.1	6.4	4.3	0.0	0.6	0.0	0.0	21.4	15.0
	21st	0.0	0.0	0.0	0.0	0.0	0.0	0.0	0.0	63.4	46.0	24.7	21.5	0.0	0.0	88.0	67.5
	22nd	0.0	0.0	0.0	0.0	0.0	0.0	0.0	0.0	6.0	7.7	15.5	10.7	0.0	0.0	21.5	18.4
Western Total		0.0	0.0	29.4	19.6	0.0	0.0	4.5	8.4	98.9	83.8	44.5	43.3	0.0	0.0	177.4	155.1
Statewide Total		17.7	10.5	62.7	46.0	4.0	1.7	110.4	111.3	1686.7	1316.6	509.0	410.4	19.3	22.5	2409.8	1919.1