

# May 2019 FY 2018-2019 CYDC JDSAG SUPPLEMENTAL REPORT

---

Prepared by the Division of Youth Services (DYS)

Data Management & Analysis

June 28, 2019



**COLORADO**

**Division of Youth Services**

Office of Children, Youth & Families

# May 2019 CYDC Supplemental Report

## DYS Commitment ADP & New Commitments by Judicial District

Region	JD <sup>1</sup>	2019 Population Estimates <sup>2</sup>	ADP <sup>3</sup>		New Commitments		
			May 2019	YTD	May 2019	YTD	YTD Rate <sup>4</sup>
<i>Central Region</i>							
	1st	55,734	86.1	85.6	3	46	8.3
	2nd	56,489	74.2	83.3	7	36	6.4
	5th	9,445	5.5	6.3	0	4	4.2
	18th	117,328	95.7	92.6	8	46	3.9
<b>Central Total</b>		<b>238,996</b>	<b>261.5</b>	<b>267.7</b>	<b>18</b>	<b>132</b>	<b>5.5</b>
<i>Northeast Region</i>							
	8th	34,282	20.8	22.9	1	8	2.3
	13th	8,510	1.0	3.3	0	1	1.2
	17th	70,426	57.5	59.8	0	22	3.1
	19th	37,897	39.7	46.1	4	20	5.3
	20th	31,849	3.8	3.8	2	2	0.6
<b>Northeast Total</b>		<b>182,964</b>	<b>122.8</b>	<b>135.9</b>	<b>7</b>	<b>53</b>	<b>2.9</b>
<i>Southern Region</i>							
	3rd	1,805	2.0	0.3	0	2	11.1
	4th	81,988	79.9	88.2	2	35	4.3
	10th	18,298	13.8	15.2	1	6	3.3
	11th	7,228	4.0	5.2	0	1	1.4
	12th	5,295	2.0	1.7	0	1	1.9
	15th	2,106	2.3	4.8	1	2	9.5
	16th	2,796	1.0	0.6	0	0	0.0
<b>Southern Total</b>		<b>119,516</b>	<b>104.9</b>	<b>115.9</b>	<b>4</b>	<b>47</b>	<b>3.9</b>
<i>Western Region</i>							
	6th	7,337	4.9	4.6	0	3	4.1
	7th	10,703	9.1	9.3	0	5	4.7
	9th	8,691	5.8	5.8	0	1	1.2
	14th	5,745	0.1	1.9	0	1	1.7
	21st	16,228	40.9	35.2	2	27	16.6
	22nd	3,215	3.1	5.2	0	1	3.1
<b>Western Total</b>		<b>51,919</b>	<b>64.1</b>	<b>62.0</b>	<b>2</b>	<b>38</b>	<b>7.3</b>
<b>Statewide Total</b>		<b>593,395</b>	<b>553.3</b>	<b>581.5</b>	<b>31</b>	<b>270</b>	<b>4.6</b>

<sup>1</sup> JD represents the judicial district in which the client was committed. Regional totals are a sum of their respective judicial districts. Regional totals reported here may differ slightly from those reported in the Monthly Population Report, where region is defined by active caseloads.

<sup>2</sup> Source: DOLA 2019 Estimates.

<sup>3</sup> Due to rounding, totals shown may not be an exact sum of the subtotals.

<sup>4</sup> Per 10,000 youth in the population.

## May 2019 CYDC Supplemental Report

### DYS Detention ADP and New Detention Admissions by Judicial District

Region	JD	2019 Population Estimates <sup>1</sup>	ADP		New Admits		
			May 2019	YTD	May 2019	YTD	YTD New Admit Rate <sup>2</sup>
<i>Central Region</i>							
	1st	55,734	14.1	19.7	30	407	73.0
	2nd	56,489	48.8	41.0	72	748	132.4
	5th	9,445	1.7	1.2	7	31	32.8
	18th	117,328	49.3	43.6	85	855	72.9
<b>Central Total</b>		<b>238,996</b>	<b>113.9</b>	<b>105.3</b>	<b>194</b>	<b>2,041</b>	<b>85.4</b>
<i>Northeast Region</i>							
	8th	34,282	11.3	10.9	19	258	75.3
	13th	8,510	2.4	3.6	5	73	85.8
	17th	70,426	22.0	21.9	33	483	68.6
	19th	37,897	20.3	18.8	42	410	108.2
	20th	31,849	9.2	7.1	10	110	34.5
<b>Northeast Total</b>		<b>182,964</b>	<b>65.2</b>	<b>62.3</b>	<b>109</b>	<b>1,334</b>	<b>72.9</b>
<i>Southern Region</i>							
	3rd	1,805	2.4	2.0	2	13	72.0
	4th	81,988	51.6	45.4	67	657	80.1
	10th	18,298	8.9	7.6	26	198	108.2
	11th	7,228	4.4	3.1	10	87	120.4
	12th	5,295	3.5	2.3	3	42	79.3
	15th	2,106	1.6	1.4	1	16	76.0
	16th	2,796	2.1	1.2	2	16	57.2
<b>Southern Total</b>		<b>119,516</b>	<b>74.5</b>	<b>62.9</b>	<b>111</b>	<b>1,029</b>	<b>86.1</b>
<i>Western Region</i>							
	6th	7,337	0.2	1.5	1	24	32.7
	7th	10,703	1.3	2.8	2	52	48.6
	9th	8,691	3.0	2.2	6	29	33.4
	14th	5,745	2.0	0.6	2	7	12.2
	21st	16,228	12.1	12.4	20	223	137.4
	22nd	3,215	2.7	1.0	7	21	65.3
<b>Western Total</b>		<b>51,919</b>	<b>21.4</b>	<b>20.5</b>	<b>38</b>	<b>356</b>	<b>68.6</b>
<i>Missing JD or Multiple JDs</i>			2.5	2.5			
<b>Statewide Total</b>		<b>593,395</b>	<b>277.5</b>	<b>253.5</b>	<b>452</b>	<b>4,760</b>	<b>80.2</b>

<sup>1</sup> Source: DOLA 2019 Estimates.

<sup>2</sup> Per 10,000 youth in the population.

## May 2019 CYDC Supplemental Report

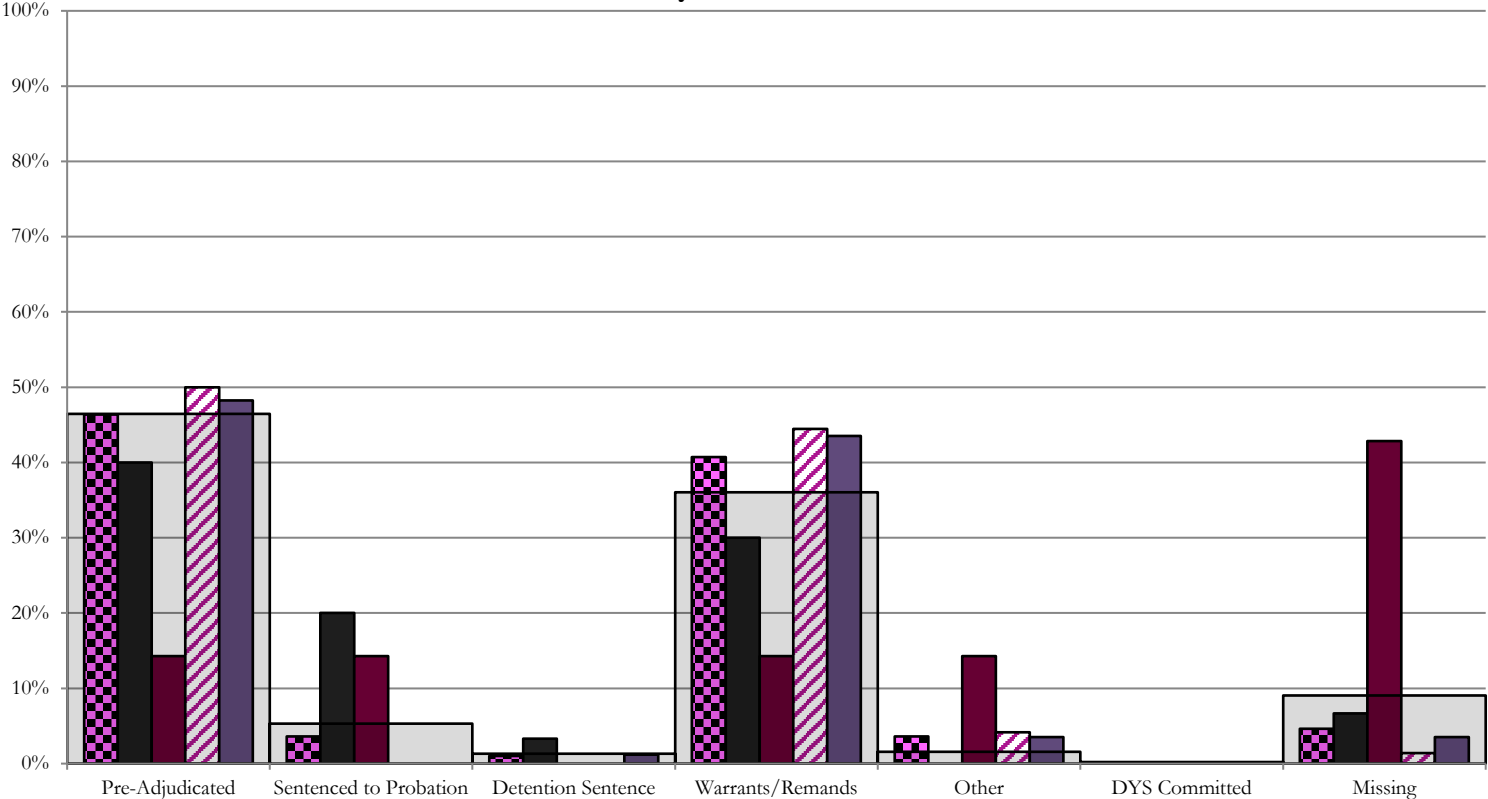
DYS Detention LOS by Judicial District				
Region	JD	YTD Detention Releases	YTD LOS (days)	LOS (days) Compared to State AVG
<i>Central Region</i>				
	1st	395	16.6	-1.2
	2nd	733	15.2	-2.6
	5th	30	9.8	-8.0
	18th	848	16.8	-1.0
<b>Central Total</b>		<b>2,006</b>	<b>16.1</b>	<b>-1.7</b>
<i>Northeast Region</i>				
	8th	262	14.0	-3.8
	13th	76	15.3	-2.5
	17th	477	14.1	-3.7
	19th	393	13.6	-4.2
	20th	106	21.3	3.5
<b>Northeast Total</b>		<b>1,314</b>	<b>14.6</b>	<b>-3.2</b>
<i>Southern Region</i>				
	3rd	13	54.1	36.3
	4th	649	24.0	6.2
	10th	196	8.7	-9.1
	11th	87	8.1	-9.7
	12th	43	17.7	-0.1
	15th	18	22.7	4.9
	16th	17	19.6	1.8
<b>Southern Total</b>		<b>1,023</b>	<b>19.7</b>	<b>1.9</b>
<i>Western Region</i>				
	6th	23	19.0	1.2
	7th	52	14.4	-3.4
	9th	27	20.6	2.8
	14th	7	40.1	22.3
	21st	206	13.6	-4.2
	22nd	17	16.0	-1.8
<b>Western Total</b>		<b>332</b>	<b>15.4</b>	<b>-2.4</b>
<b>Statewide Total</b>		<b>4,705</b>	<b>17.8</b>	<b>-</b>

## May 2019 CDYC Supplemental Report

### CYDC Reason Detained (RD) by Judicial District

Region	JD	Pre-Adjudicated				Sentenced to Probation				Detention Sentence								Warrants/Remands				Other						DYS Committed		Missing								
		Felony		Misdemeanor		Technical Violator		New Charges		Probation Sentence		Detention Sentence		Valid Court Order (VCO) Truancy		Awaiting DSS (Social Services) Placement		Failure to Appear (FTA)		Failure to Comply (FTC)		Interstate Compact on Juveniles (ICJ) Hold		Immigration Hold		No Bond Hold		Out-of-Country Warrant		Institutional		Parole		Missing				
		#	%	#	%	#	%	#	%	#	%	#	%	#	%	#	%	#	%	#	%	#	%	#	%	#	%	#	%	#	%	#	%	#	%			
<b>Central Region</b>																																						
	1st	30	8	26.7%	4	13.3%	6	20.0%	0	0.0%	0	0.0%	1	3.3%	0	0.0%	0	0.0%	2	6.7%	7	23.3%	0	0.0%	0	0.0%	0	0.0%	0	0.0%	0	0.0%	0	0.0%	0	0.0%	2	6.7%
	2nd	72	31	43.1%	5	6.9%	0	0.0%	0	0.0%	0	0.0%	0	0.0%	0	0.0%	0	0.0%	9	12.5%	23	31.9%	3	4.2%	0	0.0%	0	0.0%	0	0.0%	0	0.0%	0	0.0%	0	0.0%	1	1.4%
	5th	7	1	14.3%	0	0.0%	1	14.3%	0	0.0%	0	0.0%	0	0.0%	0	0.0%	0	0.0%	0	0.0%	1	14.3%	1	14.3%	0	0.0%	0	0.0%	0	0.0%	0	0.0%	0	0.0%	0	0.0%	3	42.9%
	18th	85	26	30.6%	15	17.6%	0	0.0%	0	0.0%	0	0.0%	1	1.2%	0	0.0%	0	0.0%	8	9.4%	29	34.1%	3	3.5%	0	0.0%	0	0.0%	0	0.0%	0	0.0%	0	0.0%	0	0.0%	3	3.5%
<b>Central Total</b>		<b>194</b>	<b>66</b>	<b>34%</b>	<b>24</b>	<b>12%</b>	<b>7</b>	<b>3.6%</b>	<b>0</b>	<b>0.0%</b>	<b>0</b>	<b>0.0%</b>	<b>2</b>	<b>1.0%</b>	<b>0</b>	<b>0.0%</b>	<b>0</b>	<b>0.0%</b>	<b>19</b>	<b>10%</b>	<b>60</b>	<b>31%</b>	<b>7</b>	<b>3.6%</b>	<b>0</b>	<b>0.0%</b>	<b>0</b>	<b>0.0%</b>	<b>0</b>	<b>0.0%</b>	<b>0</b>	<b>0.0%</b>	<b>0</b>	<b>0.0%</b>	<b>0</b>	<b>0.0%</b>	<b>9</b>	<b>4.6%</b>
<b>Northeast Region</b>																																						
	8th	19	3	15.8%	0	0.0%	0	0.0%	0	0.0%	0	0.0%	0	0.0%	0	0.0%	0	0.0%	5	26.3%	6	31.6%	0	0.0%	0	0.0%	0	0.0%	0	0.0%	0	0.0%	0	0.0%	0	0.0%	5	26.3%
	13th	5	2	40.0%	0	0.0%	0	0.0%	0	0.0%	0	0.0%	0	0.0%	0	0.0%	0	0.0%	2	40.0%	2	40.0%	0	0.0%	0	0.0%	0	0.0%	0	0.0%	0	0.0%	0	0.0%	0	0.0%	1	20.0%
	17th	33	10	30.3%	2	6.1%	0	0.0%	0	0.0%	0	0.0%	0	0.0%	0	0.0%	0	0.0%	5	15.2%	8	24.2%	0	0.0%	0	0.0%	0	0.0%	0	0.0%	0	0.0%	0	0.0%	0	0.0%	8	24.2%
	19th	42	18	42.9%	4	9.5%	13	31.0%	0	0.0%	0	0.0%	1	2.4%	0	0.0%	0	0.0%	6	14.3%	0	0.0%	0	0.0%	0	0.0%	0	0.0%	0	0.0%	0	0.0%	0	0.0%	0	0.0%	0	0.0%
	20th	10	6	60.0%	1	10.0%	1	10.0%	0	0.0%	0	0.0%	0	0.0%	0	0.0%	1	10.0%	0	0.0%	1	10.0%	0	0.0%	0	0.0%	0	0.0%	0	0.0%	0	0.0%	0	0.0%	0	0.0%	0	0.0%
<b>Northeast Total</b>		<b>109</b>	<b>39</b>	<b>36%</b>	<b>7</b>	<b>6%</b>	<b>14</b>	<b>12.8%</b>	<b>0</b>	<b>0.0%</b>	<b>0</b>	<b>0.0%</b>	<b>1</b>	<b>0.9%</b>	<b>0</b>	<b>0.0%</b>	<b>1</b>	<b>0.9%</b>	<b>10</b>	<b>9.2%</b>	<b>23</b>	<b>21%</b>	<b>0</b>	<b>0.0%</b>	<b>0</b>	<b>0.0%</b>	<b>0</b>	<b>0.0%</b>	<b>0</b>	<b>0.0%</b>	<b>0</b>	<b>0.0%</b>	<b>0</b>	<b>0.0%</b>	<b>0</b>	<b>0.0%</b>	<b>14</b>	<b>13%</b>
<b>Southern Region</b>																																						
	3rd	2	0	0.0%	0	0.0%	0	0.0%	0	0.0%	0	0.0%	0	0.0%	0	0.0%	0	0.0%	0	0.0%	0	0.0%	0	0.0%	0	0.0%	0	0.0%	0	0.0%	0	0.0%	0	0.0%	0	0.0%	2	100.0%
	4th	67	28	41.8%	10	14.9%	0	0.0%	0	0.0%	0	0.0%	0	0.0%	0	0.0%	0	0.0%	6	9.0%	18	26.9%	0	0.0%	0	0.0%	0	0.0%	1	1.5%	0	0.0%	0	0.0%	0	0.0%	4	6.0%
	10th	26	7	26.9%	2	7.7%	0	0.0%	0	0.0%	0	0.0%	2	7.7%	0	0.0%	0	0.0%	2	7.7%	12	46.2%	0	0.0%	0	0.0%	0	0.0%	0	0.0%	0	0.0%	0	0.0%	0	0.0%	1	3.8%
	11th	10	4	40.0%	1	10.0%	0	0.0%	0	0.0%	0	0.0%	0	0.0%	0	0.0%	0	0.0%	1	10.0%	0	0.0%	0	0.0%	0	0.0%	0	0.0%	0	0.0%	0	0.0%	0	0.0%	0	0.0%	4	40.0%
	12th	3	0	0.0%	1	33.3%	0	0.0%	0	0.0%	0	0.0%	0	0.0%	0	0.0%	0	0.0%	2	66.7%	0	0.0%	0	0.0%	0	0.0%	0	0.0%	0	0.0%	0	0.0%	0	0.0%	0	0.0%	0	0.0%
	15th	1	0	0.0%	0	0.0%	0	0.0%	0	0.0%	0	0.0%	0	0.0%	0	0.0%	0	0.0%	0	0.0%	0	0.0%	0	0.0%	0	0.0%	0	0.0%	0	0.0%	0	0.0%	0	0.0%	0	0.0%	1	100.0%
	16th	2	1	50.0%	0	0.0%	0	0.0%	1	50.0%	0	0.0%	0	0.0%	0	0.0%	0	0.0%	0	0.0%	0	0.0%	0	0.0%	0	0.0%	0	0.0%	0	0.0%	0	0.0%	0	0.0%	0	0.0%	0	0.0%
<b>Southern Total</b>		<b>111</b>	<b>40</b>	<b>36%</b>	<b>14</b>	<b>13%</b>	<b>0</b>	<b>0.0%</b>	<b>1</b>	<b>0.9%</b>	<b>0</b>	<b>0.0%</b>	<b>2</b>	<b>1.8%</b>	<b>0</b>	<b>0.0%</b>	<b>0</b>	<b>0.0%</b>	<b>9</b>	<b>8%</b>	<b>32</b>	<b>29%</b>	<b>0</b>	<b>0.0%</b>	<b>0</b>	<b>0.0%</b>	<b>0</b>	<b>0.0%</b>	<b>0</b>	<b>0.0%</b>	<b>0</b>	<b>0.0%</b>	<b>1</b>	<b>0.9%</b>	<b>0</b>	<b>0.0%</b>	<b>12</b>	<b>11%</b>
<b>Western Region</b>																																						
	6th	1	0	0.0%	0	0.0%	1	100.0%	0	0.0%	0	0.0%	0	0.0%	0	0.0%	0	0.0%	0	0.0%	0	0.0%	0	0.0%	0	0.0%	0	0.0%	0	0.0%	0	0.0%	0	0.0%	0	0.0%	0	0%
	7th	2	1	50.0%	0	0.0%	0	0.0%	0	0.0%	0	0.0%	0	0.0%	0	0.0%	0	0.0%	1	50.0%	0	0.0%	0	0.0%	0	0.0%	0	0.0%	0	0.0%	0	0.0%	0	0.0%	0	0.0%	0	0%
	9th	6	3	50.0%	0	0.0%	0	0.0%	0	0.0%	0	0.0%	0	0.0%	0	0.0%	0	0.0%	0	0.0%	0	0.0%	0	0.0%	0	0.0%	0	0.0%	0	0.0%	0	0.0%	0	0.0%	0	0.0%	3	50%
	14th	2	2	100.0%	0	0.0%	0	0.0%	0	0.0%	0	0.0%	0	0.0%	0	0.0%	0	0.0%	0	0.0%	0	0.0%	0	0.0%	0	0.0%	0	0.0%	0	0.0%	0	0.0%	0	0.0%	0	0.0%	0	0%
	21st	20	9	45.0%	3	15.0%	0	0.0%	0	0.0%	0	0.0%	0	0.0%	0	0.0%	0	0.0%	6	30.0%	0	0.0%	0	0.0%	0	0.0%	0	0.0%	0	0.0%	0	0.0%	0	0.0%	0	0.0%	2	10%
	22nd	7	2	28.6%	0	0.0%	1	14.3%	0	0.0%	0	0.0%	0	0.0%	0	0.0%	0	0.0%	3	42.9%	0	0.0%	0	0.0%	0	0.0%	0	0.0%	0	0.0%	0	0.0%	0	0.0%	0	0.0%	1	14%
<b>Western Total</b>		<b>38</b>	<b>17</b>	<b>45%</b>	<b>3</b>	<b>7.9%</b>	<b>2</b>	<b>5.3%</b>	<b>0</b>	<b>0.0%</b>	<b>0</b>	<b>0.0%</b>	<b>0</b>	<b>0.0%</b>	<b>0</b>	<b>0.0%</b>	<b>0</b>	<b>0.0%</b>	<b>1</b>	<b>2.6%</b>	<b>9</b>	<b>24%</b>	<b>0</b>	<b>0.0%</b>	<b>0</b>	<b>0.0%</b>	<b>0</b>	<b>0.0%</b>	<b>0</b>	<b>0.0%</b>	<b>0</b>	<b>0.0%</b>	<b>0</b>	<b>0.0%</b>	<b>0</b>	<b>0.0%</b>	<b>6</b>	<b>16%</b>
<b>Individual RD Totals</b>		<b>452</b>	<b>162</b>	<b>36%</b>	<b>48</b>	<b>11%</b>	<b>23</b>	<b>5.1%</b>	<b>1</b>	<b>0.2%</b>	<b>0</b>	<b>0.0%</b>	<b>5</b>	<b>1.1%</b>	<b>0</b>	<b>0.0%</b>	<b>1</b>	<b>0.2%</b>	<b>39</b>	<b>9%</b>	<b>124</b>	<b>27%</b>	<b>7</b>	<b>1.5%</b>	<b>0</b>	<b>0.0%</b>	<b>0</b>	<b>0.0%</b>	<b>0</b>	<b>0.0%</b>	<b>0</b>	<b>0.0%</b>	<b>1</b>	<b>0.2%</b>	<b>0</b>	<b>0.0%</b>	<b>41</b>	<b>9%</b>
<b>Statewide Totals</b>		<b>452</b>	<b>210</b>	<b>46.5%</b>	<b>24</b>	<b>5.3%</b>	<b>6</b>	<b>1.3%</b>	<b>0</b>	<b>0.0%</b>	<b>0</b>	<b>0.0%</b>	<b>6</b>	<b>1.3%</b>	<b>0</b>	<b>0.0%</b>	<b>1</b>	<b>0.2%</b>	<b>163</b>	<b>36.1%</b>	<b>7</b>	<b>1.5%</b>	<b>0</b>	<b>0.0%</b>	<b>0</b>	<b>0.0%</b>	<b>0</b>	<b>0.0%</b>	<b>0</b>	<b>0.0%</b>	<b>1</b>	<b>0.2%</b>	<b>0</b>	<b>0.0%</b>	<b>41</b>	<b>9%</b>		

# Central Region CYDC Reason Detained by Judicial District May 2019 New Admits



■ CENTRAL REGION, 194 New Admits

■ 1st JD, 30 New Admits

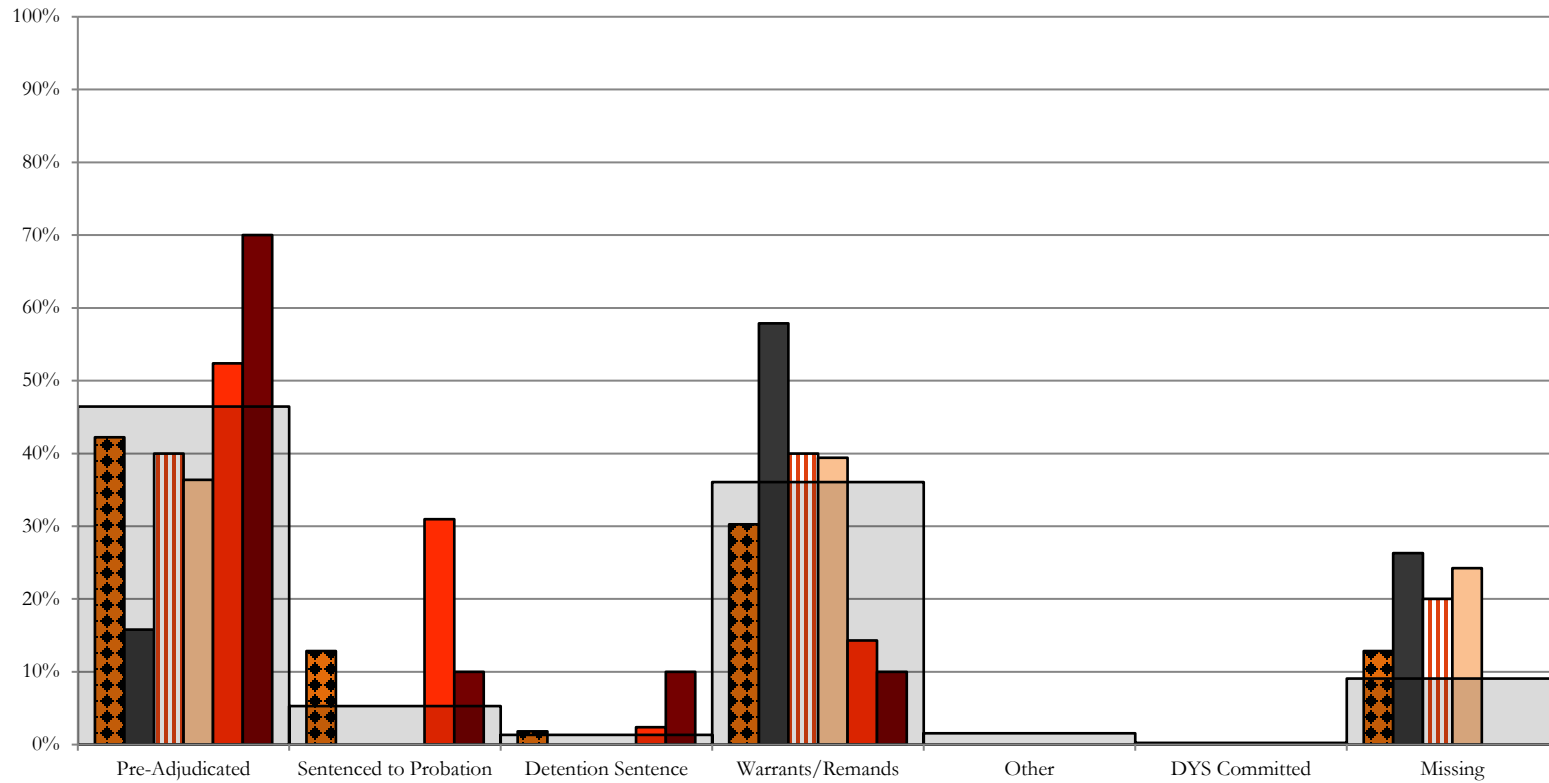
■ 5th JD, 7 New Admits

■ 2nd JD, 72 New Admits

■ 18th JD, 85 New Admits

■ STATEWIDE, 452 New Admits

## Northeast Region CYDC Reason Detained by Judicial District May 2019 New Admits



■ NORTHEAST REGION, 109 New Admits

■ 8th JD, 19 New Admits

■ 13th JD, 5 New Admits

■ 17th JD, 33 New Admits

■ 19th JD, 42 New Admits

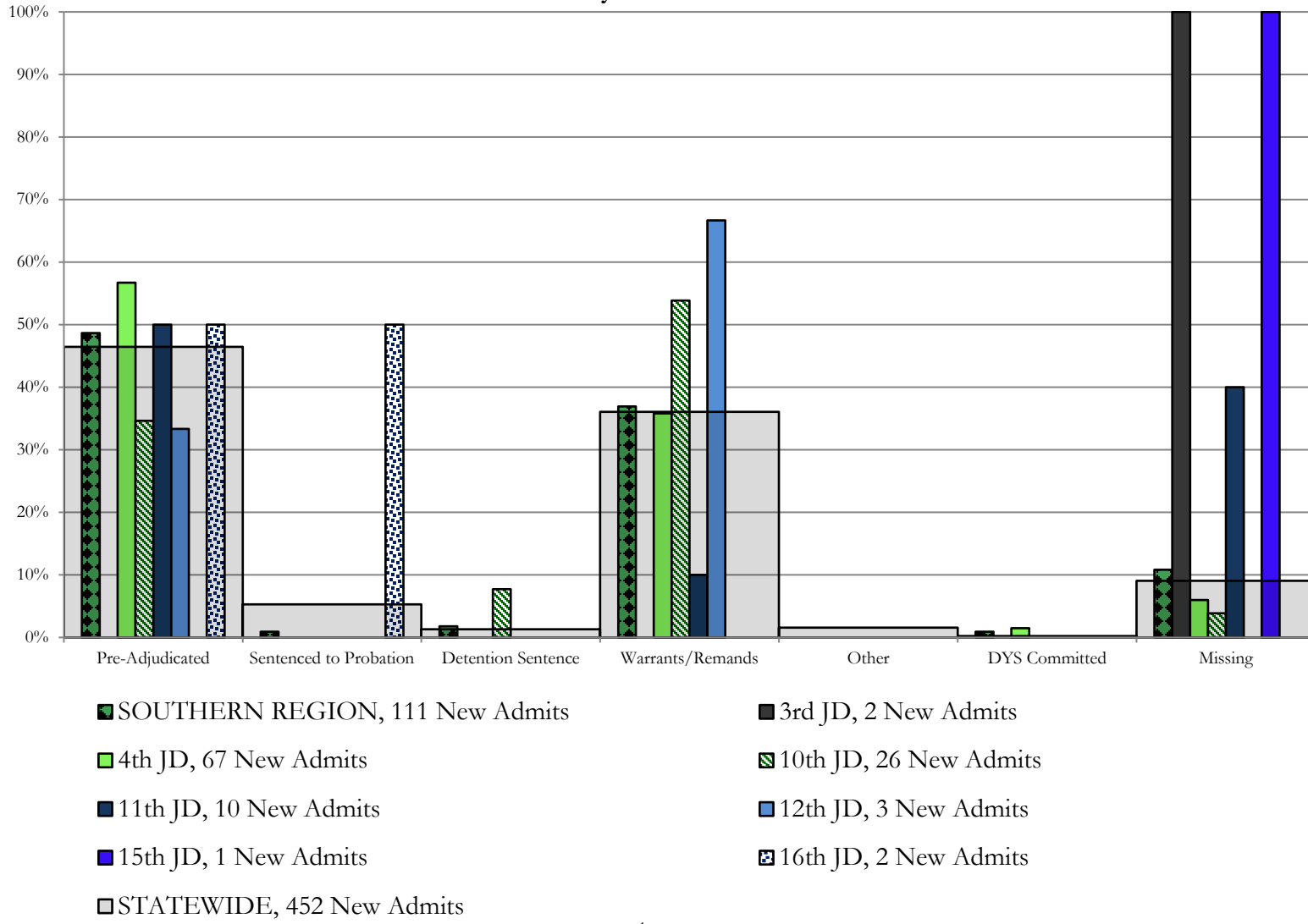
■ 20th JD, 10 New Admits

■ STATEWIDE, 452 New Admits

# Southern Region

## CYDC Reason Detained by Judicial District

### May 2019 New Admits

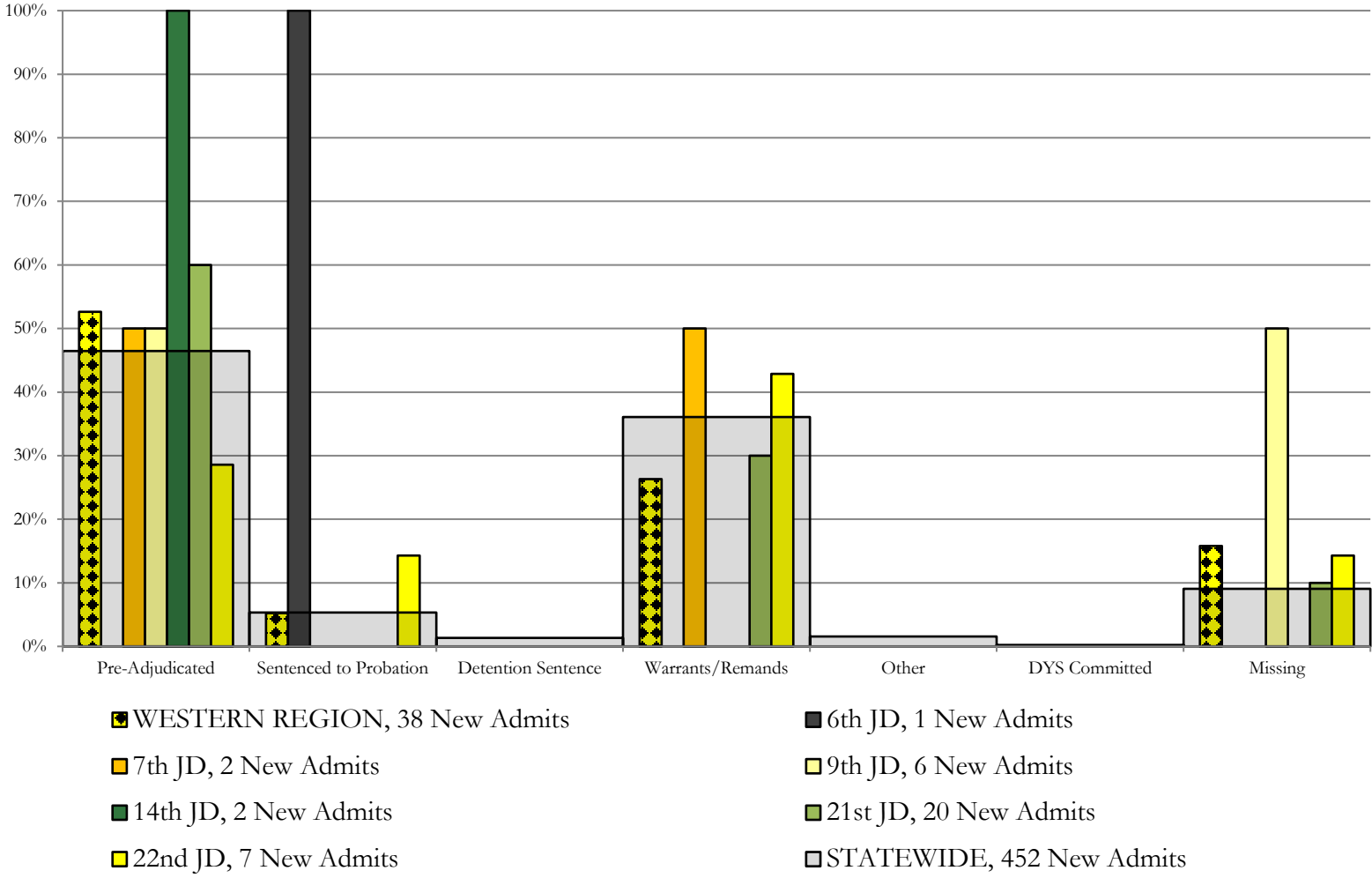




# Western Region

## CYDC Reason Detained by Judicial District

### May 2019 New Admits



# May 2019 CYDC Supplemental Report

## DYS Detention Maximum Youth Served by Judicial District<sup>1</sup>

Region	JD	Detention Capacity	Detention ADP		Maximum Youth Served on a Single Day <sup>2,3</sup>			
			May 2019	YTD	May 2019		YTD	
					Number of Youth	% of Detention Capacity	Number of Youth	% of Detention Capacity
<i>Central Region</i>								
	1st	37	14.1	19.7	18	48.6%	34	91.9%
	2nd	64	48.8	41.0	56	87.5%	59	92.2%
	5th	4	1.7	1.2	5	125.0%	5	125.0%
	18th	61	49.3	43.6	57	93.4%	58	95.1%
<b>Central Region</b>		<b>166</b>	<b>113.9</b>	<b>105.3</b>	<b>126</b>	<b>75.9%</b>	<b>134</b>	<b>80.7%</b>
<i>Northeast Region</i>								
	8th	21	11.3	10.9	15	71.4%	18	85.7%
	13th	5	2.4	3.6	4	80.0%	9	180.0%
	17th	30	22.0	21.9	27	90.0%	30	100.0%
	19th	25	20.3	18.8	27	108.0%	27	108.0%
	20th	13	9.2	7.1	13	100.0%	13	100.0%
<b>Northeast Region</b>		<b>94</b>	<b>65.2</b>	<b>62.3</b>	<b>77</b>	<b>81.9%</b>	<b>78</b>	<b>83.0%</b>
<i>Southern Region</i>								
	3rd	2	2.4	2.0	3	150.0%	4	200.0%
	4th	51	51.6	45.4	55	107.8%	55	107.8%
	10th	13	8.9	7.6	12	92.3%	14	107.7%
	11th	8	4.4	3.1	7	87.5%	7	87.5%
	12th	4	3.5	2.3	5	125.0%	5	125.0%
	15th	2	1.6	1.4	2	100.0%	4	200.0%
	16th	3	2.1	1.2	3	100.0%	3	100.0%
<b>Southern Region</b>		<b>83</b>	<b>74.5</b>	<b>62.9</b>	<b>80</b>	<b>96.4%</b>	<b>80</b>	<b>96.4%</b>
<i>Western Region</i>								
	6th	5	0.2	1.5	2	40.0%	4	80.0%
	7th	7	1.3	2.8	2	28.6%	6	85.7%
	9th	6	3.0	2.2	5	83.3%	6	100.0%
	14th	3	2.0	0.6	3	100.0%	3	100.0%
	21st	14	12.1	12.4	16	114.3%	17	121.4%
	22nd	4	2.7	1.0	5	125.0%	5	125.0%
<b>Western Region</b>		<b>39</b>	<b>21.4</b>	<b>20.5</b>	<b>27</b>	<b>69.2%</b>	<b>28</b>	<b>71.8%</b>
<i>Missing JD or Multiple JDs</i>			2.5	2.5				
<b>Statewide</b>		<b>382</b>	<b>277.5</b>	<b>253.5</b>	<b>287</b>	<b>75.1%</b>	<b>289</b>	<b>75.7%</b>

<sup>1</sup> Maximum youth served is the highest number of youth in detention on a single day during the month or fiscal year.

<sup>2</sup> Regional figures are not the sum of judicial districts, but represent the maximum count on one day for the entire region.

<sup>3</sup> State figures are not the sum of regional figures, but represent the maximum count on one day for the entire state.

## May 2019 CYDC Supplemental Report

### CYDC Community ADP by Judicial District

Region	JD	Committed		Diversion		ICJ		Municipal		Pre-Adjudicated		Sentenced		VCO		Total	
		May 2019	YTD	May 2019	YTD	May 2019	YTD	May 2019	YTD	May 2019	YTD	May 2019	YTD	May 2019	YTD	May 2019	YTD
<i>Central Region</i>																	
	1st	0.7	1.0	1.0	3.0	0.0	0.0	43.8	53.5	142.4	150.2	30.7	30.3	0.0	0.0	218.6	238.0
	2nd	1.5	7.2	0.0	0.0	0.3	2.0	0.0	0.0	133.9	208.8	17.3	36.1	0.0	0.0	152.9	254.1
	5th	0.0	0.0	12.4	12.0	0.0	0.0	0.0	0.0	7.1	7.7	32.5	29.2	0.0	0.0	52.1	49.0
	18th	1.3	3.2	0.0	0.0	0.1	0.0	0.2	1.0	261.8	295.7	25.8	32.5	0.0	0.0	289.2	332.4
<b>Central Total</b>		<b>3.5</b>	<b>11.4</b>	<b>13.4</b>	<b>15.0</b>	<b>0.4</b>	<b>2.0</b>	<b>44.0</b>	<b>54.5</b>	<b>545.3</b>	<b>662.4</b>	<b>106.2</b>	<b>128.1</b>	<b>0.0</b>	<b>0.0</b>	<b>712.7</b>	<b>873.5</b>
<i>Northeast Region</i>																	
	8th	0.0	0.0	2.9	2.5	0.0	0.0	0.0	0.0	51.4	68.0	33.7	48.5	0.0	0.0	88.0	119.0
	13th	0.0	0.0	0.0	0.0	0.0	0.0	0.8	0.0	25.7	26.0	2.5	1.0	2.2	2.0	31.1	29.0
	17th	0.7	1.0	0.0	0.0	0.0	0.0	0.0	0.0	262.5	312.3	83.8	93.1	0.0	0.0	347.0	406.4
	19th	0.3	0.1	2.5	1.0	0.1	0.0	1.4	0.5	60.7	77.0	32.2	38.5	1.0	1.0	98.1	118.1
	20th	2.8	3.0	11.5	13.5	0.0	0.0	0.0	0.0	110.4	160.4	35.5	43.0	12.5	12.0	172.7	231.8
<b>Northeast Total</b>		<b>3.8</b>	<b>4.1</b>	<b>16.9</b>	<b>16.9</b>	<b>0.1</b>	<b>0.0</b>	<b>2.2</b>	<b>0.5</b>	<b>510.6</b>	<b>643.8</b>	<b>187.6</b>	<b>224.1</b>	<b>15.7</b>	<b>15.0</b>	<b>736.9</b>	<b>904.4</b>
<i>Southern Region</i>																	
	3rd	0.0	0.0	0.0	0.0	0.0	0.0	0.0	0.0	9.6	19.5	6.0	6.5	0.0	0.0	15.6	26.0
	4th	2.9	7.1	0.0	0.0	0.0	0.0	25.5	20.8	135.2	209.6	34.6	40.5	0.0	0.0	198.2	278.0
	10th	0.0	0.1	0.3	0.0	1.0	1.0	2.0	2.0	22.7	22.8	7.8	7.1	1.2	6.1	35.1	39.1
	11th	1.0	1.0	0.0	0.0	0.0	0.0	8.5	7.0	27.7	36.4	20.1	27.0	0.2	1.7	57.5	73.1
	12th	0.0	0.0	2.2	4.0	0.0	0.0	3.7	2.0	12.9	14.7	1.0	2.8	0.1	0.5	19.9	23.9
	15th	0.0	0.0	1.1	1.0	0.0	0.0	0.0	0.0	2.7	2.7	7.8	14.7	0.0	0.0	11.6	18.4
	16th	0.0	0.0	0.0	0.0	0.0	0.0	0.0	0.0	5.2	5.6	1.8	2.0	13.8	12.0	20.7	19.6
<b>Southern Total</b>		<b>3.9</b>	<b>8.2</b>	<b>3.6</b>	<b>5.0</b>	<b>1.0</b>	<b>1.0</b>	<b>39.7</b>	<b>31.8</b>	<b>216.0</b>	<b>311.3</b>	<b>79.1</b>	<b>100.5</b>	<b>15.2</b>	<b>20.3</b>	<b>358.7</b>	<b>478.1</b>
<i>Western Region</i>																	
	6th	0.0	0.0	0.0	0.0	0.0	0.0	0.5	1.0	7.7	9.0	0.1	0.0	0.0	0.0	8.3	10.0
	7th	0.0	0.0	8.8	12.0	0.0	0.0	1.1	2.0	10.6	7.7	9.1	5.2	0.0	0.0	29.6	26.8
	9th	0.0	0.0	1.1	0.0	0.0	0.0	3.9	0.6	9.1	10.4	2.0	0.4	0.0	0.0	16.1	11.4
	14th	0.0	0.0	7.4	15.2	0.0	0.0	2.3	1.0	4.4	7.4	0.6	0.0	0.0	0.0	14.8	23.6
	21st	0.0	0.0	0.0	0.0	0.0	0.0	0.0	0.0	44.6	63.6	21.4	25.8	0.0	0.0	65.9	89.4
	22nd	0.0	0.0	0.0	0.0	0.0	0.0	0.0	0.0	7.9	7.8	10.0	14.0	0.0	0.0	17.9	21.8
<b>Western Total</b>		<b>0.0</b>	<b>0.0</b>	<b>17.3</b>	<b>27.2</b>	<b>0.0</b>	<b>0.0</b>	<b>7.8</b>	<b>4.6</b>	<b>84.2</b>	<b>105.8</b>	<b>43.2</b>	<b>45.4</b>	<b>0.0</b>	<b>0.0</b>	<b>152.5</b>	<b>183.0</b>
<b>Statewide Total</b>		<b>11.3</b>	<b>23.7</b>	<b>51.2</b>	<b>64.2</b>	<b>1.5</b>	<b>3.0</b>	<b>93.8</b>	<b>91.4</b>	<b>1356.0</b>	<b>1723.2</b>	<b>416.2</b>	<b>498.1</b>	<b>30.9</b>	<b>35.3</b>	<b>1960.8</b>	<b>2439.0</b>