

April 2019 FY 2018-2019 CYDC JDSAG SUPPLEMENTAL REPORT

Prepared by the Division of Youth Services (DYS)

Data Management & Analysis

May 25, 2019



COLORADO

Division of Youth Services

Office of Children, Youth & Families

April 2019 CYDC Supplemental Report

DYS Commitment ADP & New Commitments by Judicial District

Region	JD ¹	2019 Population Estimates ²	ADP ³		New Commitments		
			April 2019	YTD	April 2019	YTD	YTD Rate ⁴
<i>Central Region</i>							
	1st	55,734	86.4	85.5	3	43	7.7
	2nd	56,489	76.1	84.3	2	29	5.1
	5th	9,445	5.8	6.2	0	4	4.2
	18th	117,328	93.4	92.2	3	38	3.2
Central Total		238,996	261.8	268.3	8	114	4.8
<i>Northeast Region</i>							
	8th	34,282	20.8	23.1	0	7	2.0
	13th	8,510	1.0	3.5	0	1	1.2
	17th	70,426	57.8	60.0	1	22	3.1
	19th	37,897	41.5	46.8	2	16	4.2
	20th	31,849	1.6	3.8	0	0	0.0
Northeast Total		182,964	122.7	137.2	3	46	2.5
<i>Southern Region</i>							
	3rd	1,805	1.1	0.1	2	2	11.1
	4th	81,988	73.8	89.0	2	33	4.0
	10th	18,298	14.5	15.4	1	5	2.7
	11th	7,228	5.0	5.3	0	1	1.4
	12th	5,295	1.4	1.7	1	1	1.9
	15th	2,106	2.0	5.1	0	1	4.7
	16th	2,796	1.0	0.5	0	0	0.0
Southern Total		119,516	98.7	117.1	6	43	3.6
<i>Western Region</i>							
	6th	7,337	5.0	4.6	0	3	4.1
	7th	10,703	10.0	9.3	0	5	4.7
	9th	8,691	6.0	5.8	0	1	1.2
	14th	5,745	1.0	2.1	0	1	1.7
	21st	16,228	37.2	34.6	5	25	15.4
	22nd	3,215	4.0	5.4	0	1	3.1
Western Total		51,919	63.2	61.8	5	36	6.9
Statewide Total		593,395	546.4	584.3	22	239	4.0

¹ JD represents the judicial district in which the client was committed. Regional totals are a sum of their respective judicial districts. Regional totals reported here may differ slightly from those reported in the Monthly Population Report, where region is defined by active caseloads.

² Source: DOLA 2019 Estimates.

³ Due to rounding, totals shown may not be an exact sum of the subtotals.

⁴ Per 10,000 youth in the population.

April 2019 CYDC Supplemental Report

DYS Detention ADP and New Detention Admissions by Judicial District

Region	JD	2019 Population Estimates ¹	ADP		New Admits		
			April 2019	YTD	April 2019	YTD	YTD New Admit Rate ²
<i>Central Region</i>							
	1st	55,734	12.4	20.3	30	378	67.8
	2nd	56,489	39.4	40.4	75	677	119.8
	5th	9,445	1.0	1.1	0	24	25.4
	18th	117,328	38.5	42.9	84	770	65.6
Central Total		238,996	91.3	104.6	189	1,849	77.4
<i>Northeast Region</i>							
	8th	34,282	9.9	10.9	31	239	69.7
	13th	8,510	3.6	3.7	8	68	79.9
	17th	70,426	22.9	21.9	47	450	63.9
	19th	37,897	19.3	18.9	44	369	97.4
	20th	31,849	9.5	6.9	15	100	31.4
Northeast Total		182,964	65.2	62.3	145	1,226	67.0
<i>Southern Region</i>							
	3rd	1,805	2.0	1.9	1	11	60.9
	4th	81,988	44.0	44.7	76	590	72.0
	10th	18,298	10.1	7.4	26	172	94.0
	11th	7,228	4.3	3.0	8	77	106.5
	12th	5,295	4.0	2.1	5	39	73.7
	15th	2,106	1.0	1.4	0	15	71.2
	16th	2,796	1.0	1.1	4	14	50.1
Southern Total		119,516	66.4	61.7	120	918	76.8
<i>Western Region</i>							
	6th	7,337	1.1	1.6	2	23	31.3
	7th	10,703	1.1	2.9	1	50	46.7
	9th	8,691	2.2	2.2	1	23	26.5
	14th	5,745	1.1	0.4	1	5	8.7
	21st	16,228	11.6	12.5	20	203	125.1
	22nd	3,215	0.3	0.8	1	14	43.5
Western Total		51,919	17.3	20.4	26	318	61.2
<i>Missing JD or Multiple JDs</i>			<i>1.4</i>	<i>2.5</i>			
Statewide Total		593,395	241.7	251.5	480	4,311	72.6

¹ Source: DOLA 2019 Estimates.

² Per 10,000 youth in the population.

April 2019 CYDC Supplemental Report

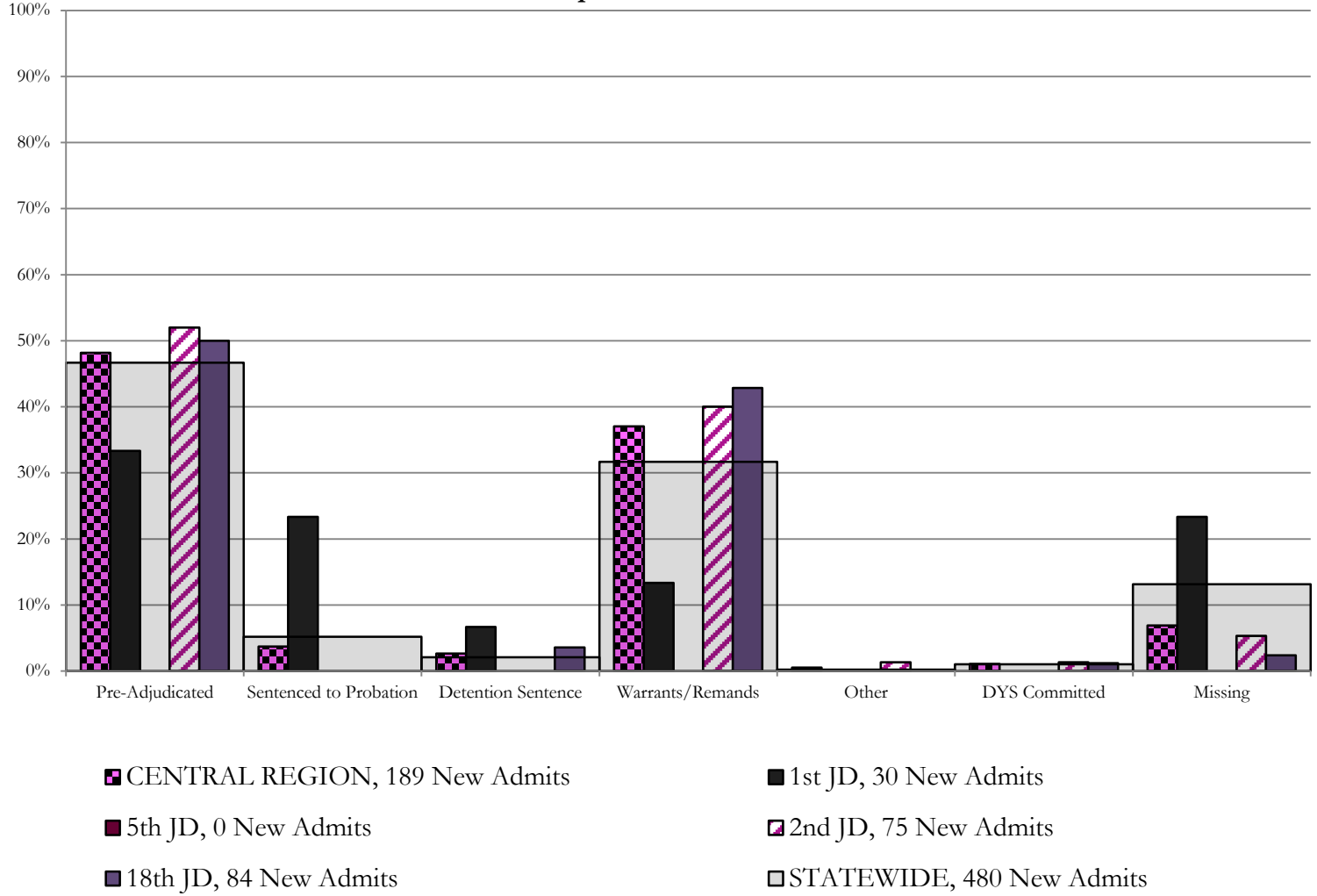
DYS Detention LOS by Judicial District				
Region	JD	YTD Detention Releases	YTD LOS (days)	LOS (days) Compared to State AVG
<i>Central Region</i>				
	1st	372	16.6	-1.3
	2nd	661	15.1	-2.7
	5th	24	9.6	-8.2
	18th	781	16.7	-1.2
Central Total		1,838	16.0	-1.8
<i>Northeast Region</i>				
	8th	238	14.1	-3.8
	13th	69	15.5	-2.3
	17th	442	13.6	-4.3
	19th	351	13.6	-4.3
	20th	94	19.8	2.0
Northeast Total		1,194	14.3	-3.6
<i>Southern Region</i>				
	3rd	10	44.9	27.1
	4th	586	25.0	7.2
	10th	166	8.9	-9.0
	11th	76	8.9	-8.9
	12th	36	13.8	-4.1
	15th	17	16.3	-1.5
	16th	14	23.6	5.8
Southern Total		905	20.3	2.5
<i>Western Region</i>				
	6th	20	19.6	1.7
	7th	49	13.4	-4.4
	9th	23	21.6	3.8
	14th	5	40.7	22.8
	21st	182	14.0	-3.8
	22nd	15	17.1	-0.7
Western Total		294	15.5	-2.3
Statewide Total		4,255	17.8	-

April 2019 CDYC Supplemental Report

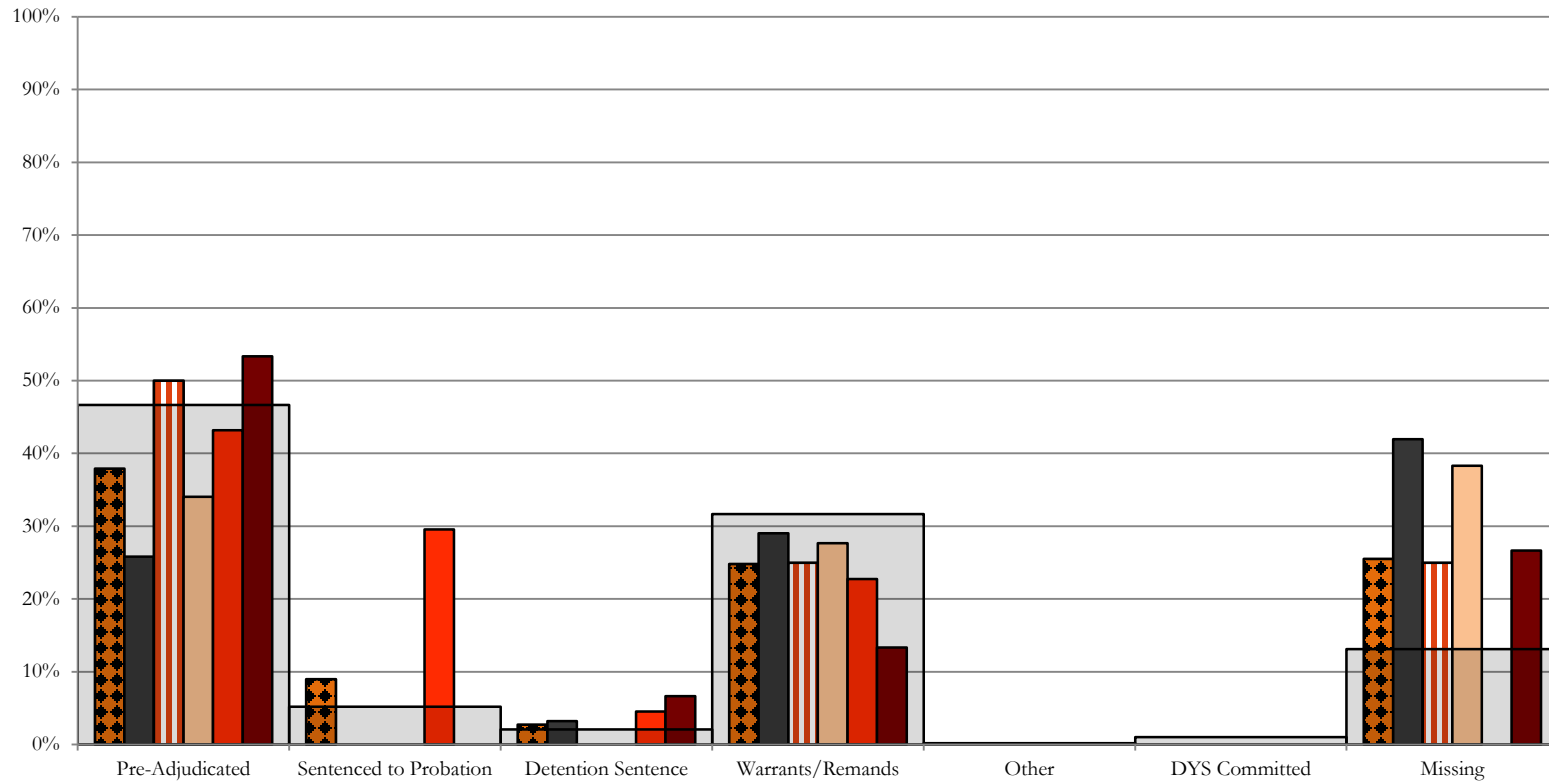
CYDC Reason Detained (RD) by Judicial District

Region	JD	Monthly New Admits	Pre-Adjudicated				Sentenced to Probation				Detention Sentence								Warrants/Remands				Other						DYS Committed				Missing			
			Felony		Misdemeanor		Technical Violator		New Charges		Probation Sentence		Detention Sentence		Valid Court Order (VCO) Truancy		Awaiting DSS (Social Services) Placement		Failure to Appear (FTA)		Failure to Comply (FTC)		Interstate Compact on Juveniles (ICJ) Hold		Immigration Hold		No Bond Hold		Out-of-Country Warrant		Institutional		Parole		Missing	
			#	%	#	%	#	%	#	%	#	%	#	%	#	%	#	%	#	%	#	%	#	%	#	%	#	%	#	%	#	%	#	%	#	%
Central Region																																				
	1st	30	6	20.0%	4	13.3%	7	23.3%	0	0.0%	0	0.0%	2	6.7%	0	0.0%	0	0.0%	1	3.3%	3	10.0%	0	0.0%	0	0.0%	0	0.0%	0	0.0%	0	0.0%	0	0.0%	7	23.3%
	2nd	75	36	48.0%	3	4.0%	0	0.0%	0	0.0%	0	0.0%	0	0.0%	0	0.0%	0	0.0%	6	8.0%	24	32.0%	1	1.3%	0	0.0%	0	0.0%	0	0.0%	1	1.3%	0	0.0%	4	5.3%
	5th	0	0	0.0%	0	0.0%	0	0.0%	0	0.0%	0	0.0%	0	0.0%	0	0.0%	0	0.0%	0	0.0%	0	0.0%	0	0.0%	0	0.0%	0	0.0%	0	0.0%	0	0.0%	0	0.0%	0	0.0%
	18th	84	25	29.8%	17	20.2%	0	0.0%	0	0.0%	0	0.0%	3	3.6%	0	0.0%	0	0.0%	8	9.5%	28	33.3%	0	0.0%	0	0.0%	0	0.0%	1	1.2%	0	0.0%	2	2.4%	0	0.0%
Central Total		189	67	35%	24	13%	7	3.7%	0	0.0%	0	0.0%	5	2.6%	0	0.0%	0	0.0%	15	8%	55	29%	1	0.5%	0	0.0%	0	0.0%	0	0.0%	2	1.1%	0	0.0%	13	6.9%
Northeast Region																																				
	8th	31	4	12.9%	4	12.9%	0	0.0%	0	0.0%	0	0.0%	1	3.2%	0	0.0%	0	0.0%	2	6.5%	7	22.6%	0	0.0%	0	0.0%	0	0.0%	0	0.0%	0	0.0%	0	0.0%	13	41.9%
	13th	8	4	50.0%	0	0.0%	0	0.0%	0	0.0%	0	0.0%	0	0.0%	0	0.0%	0	0.0%	0	0.0%	2	25.0%	0	0.0%	0	0.0%	0	0.0%	0	0.0%	0	0.0%	0	0.0%	2	25.0%
	17th	47	13	27.7%	3	6.4%	0	0.0%	0	0.0%	0	0.0%	0	0.0%	0	0.0%	0	0.0%	2	4.3%	11	23.4%	0	0.0%	0	0.0%	0	0.0%	0	0.0%	0	0.0%	18	38.3%		
	19th	44	15	34.1%	4	9.1%	13	29.5%	0	0.0%	0	0.0%	2	4.5%	0	0.0%	0	0.0%	4	9.1%	6	13.6%	0	0.0%	0	0.0%	0	0.0%	0	0.0%	0	0.0%	0	0.0%	0	0.0%
	20th	15	8	53.3%	0	0.0%	0	0.0%	0	0.0%	0	0.0%	0	0.0%	1	6.7%	0	0.0%	2	13.3%	0	0.0%	0	0.0%	0	0.0%	0	0.0%	0	0.0%	0	0.0%	4	26.7%	0	0.0%
Northeast Total		145	44	30%	11	8%	13	9.0%	0	0.0%	0	0.0%	3	2.1%	0	0.0%	1	0.7%	8	5.5%	28	19%	0	0.0%	0	0.0%	0	0.0%	0	0.0%	0	0.0%	0	0.0%	37	26%
Southern Region																																				
	3rd	1	1	100.0%	0	0.0%	0	0.0%	0	0.0%	0	0.0%	0	0.0%	0	0.0%	0	0.0%	0	0.0%	0	0.0%	0	0.0%	0	0.0%	0	0.0%	0	0.0%	0	0.0%	0	0.0%	0	0.0%
	4th	76	39	51.3%	5	6.6%	0	0.0%	4	5.3%	0	0.0%	0	0.0%	0	0.0%	0	0.0%	5	6.6%	16	21.1%	0	0.0%	0	0.0%	0	0.0%	3	3.9%	0	0.0%	4	5.3%	0	0.0%
	10th	26	5	19.2%	5	19.2%	0	0.0%	1	3.8%	0	0.0%	0	0.0%	0	0.0%	0	0.0%	3	11.5%	12	46.2%	0	0.0%	0	0.0%	0	0.0%	0	0.0%	0	0.0%	0	0.0%	0	0.0%
	11th	8	4	50.0%	0	0.0%	0	0.0%	0	0.0%	0	0.0%	0	0.0%	0	0.0%	0	0.0%	0	0.0%	3	37.5%	0	0.0%	0	0.0%	0	0.0%	0	0.0%	0	0.0%	1	12.5%	0	0.0%
	12th	5	1	20.0%	0	0.0%	0	0.0%	0	0.0%	0	0.0%	0	0.0%	0	0.0%	0	0.0%	0	0.0%	0	0.0%	0	0.0%	0	0.0%	0	0.0%	0	0.0%	0	0.0%	4	80.0%	0	0.0%
	15th	0	0	0.0%	0	0.0%	0	0.0%	0	0.0%	0	0.0%	0	0.0%	0	0.0%	0	0.0%	0	0.0%	0	0.0%	0	0.0%	0	0.0%	0	0.0%	0	0.0%	0	0.0%	0	0.0%	0	0.0%
	16th	4	2	50.0%	1	25.0%	0	0.0%	0	0.0%	0	0.0%	0	0.0%	0	0.0%	0	0.0%	0	0.0%	0	0.0%	0	0.0%	0	0.0%	0	0.0%	0	0.0%	0	0.0%	1	25.0%	0	0.0%
Southern Total		120	52	43%	11	9%	0	0.0%	5	4.2%	0	0.0%	0	0.0%	0	0.0%	0	0.0%	8	7%	31	26%	0	0.0%	0	0.0%	0	0.0%	0	0.0%	3	2.5%	0	0.0%	10	8%
Western Region																																				
	6th	2	1	50.0%	0	0.0%	0	0.0%	0	0.0%	0	0.0%	0	0.0%	0	0.0%	0	0.0%	1	50.0%	0	0.0%	0	0.0%	0	0.0%	0	0.0%	0	0.0%	0	0.0%	0	0.0%	0	0.0%
	7th	1	1	100.0%	0	0.0%	0	0.0%	0	0.0%	0	0.0%	0	0.0%	0	0.0%	0	0.0%	0	0.0%	0	0.0%	0	0.0%	0	0.0%	0	0.0%	0	0.0%	0	0.0%	0	0.0%	0	0.0%
	9th	1	0	0.0%	0	0.0%	0	0.0%	0	0.0%	0	0.0%	0	0.0%	0	0.0%	0	0.0%	0	0.0%	0	0.0%	0	0.0%	0	0.0%	0	0.0%	0	0.0%	0	0.0%	1	100%	0	0.0%
	14th	1	0	0.0%	0	0.0%	0	0.0%	0	0.0%	0	0.0%	0	0.0%	0	0.0%	0	0.0%	0	0.0%	0	0.0%	0	0.0%	0	0.0%	0	0.0%	0	0.0%	0	0.0%	1	100%	0	0.0%
	21st	20	8	40.0%	5	25.0%	0	0.0%	0	0.0%	0	0.0%	1	5.0%	0	0.0%	0	0.0%	6	30.0%	0	0.0%	0	0.0%	0	0.0%	0	0.0%	0	0.0%	0	0.0%	0	0.0%	0	0.0%
	22nd	1	0	0.0%	0	0.0%	0	0.0%	0	0.0%	0	0.0%	0	0.0%	0	0.0%	0	0.0%	0	0.0%	0	0.0%	0	0.0%	0	0.0%	0	0.0%	0	0.0%	0	0.0%	1	100%	0	0.0%
Western Total		26	10	38%	5	19.2%	0	0.0%	0	0.0%	0	0.0%	1	3.8%	0	0.0%	0	0.0%	7	27%	0	0.0%	0	0.0%	0	0.0%	0	0.0%	0	0.0%	0	0.0%	3	12%		
Individual RD Totals		480	173	36%	51	11%	20	4.2%	5	1.0%	0	0.0%	9	1.9%	0	0.0%	1	0.2%	31	6%	121	25%	1	0.2%	0	0.0%	0	0.0%	0	0.0%	5	1.0%	0	0.0%	63	13%
Statewide Totals		480	224	46.7%	25	5.2%	10	2.1%	5	1.0%	0	0.0%	10	2.1%	0	0.0%	1	0.2%	152	31.7%	1	0.2%	0	0.0%	0	0.0%	5	1.0%	0	0.0%	63	13%				

Central Region CYDC Reason Detained by Judicial District April 2019 New Admits



Northeast Region CYDC Reason Detained by Judicial District April 2019 New Admits



■ NORTHEAST REGION, 145 New Admits

■ 8th JD, 31 New Admits

■ 13th JD, 8 New Admits

■ 17th JD, 47 New Admits

■ 19th JD, 44 New Admits

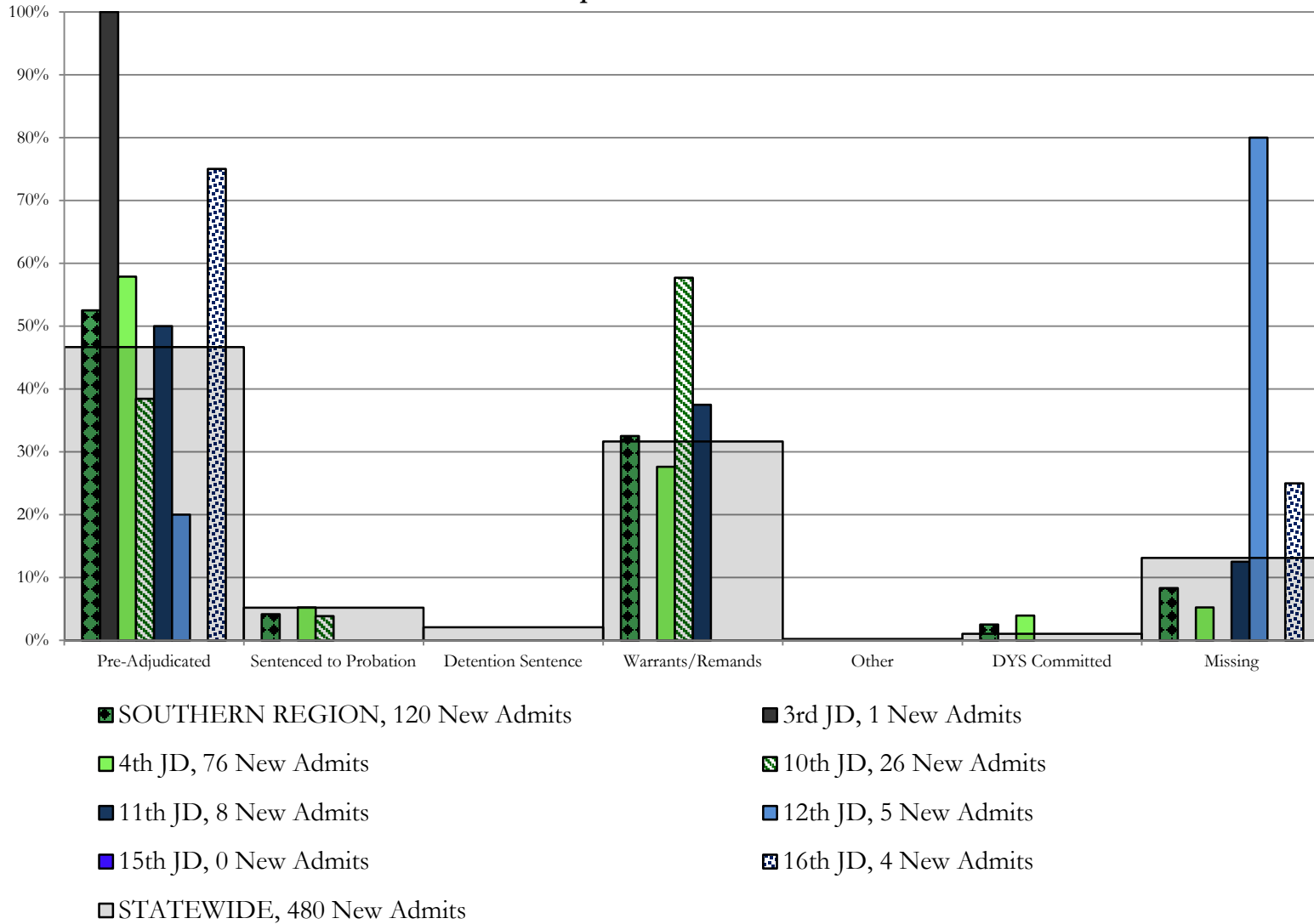
■ 20th JD, 15 New Admits

■ STATEWIDE, 480 New Admits

Southern Region

CYDC Reason Detained by Judicial District

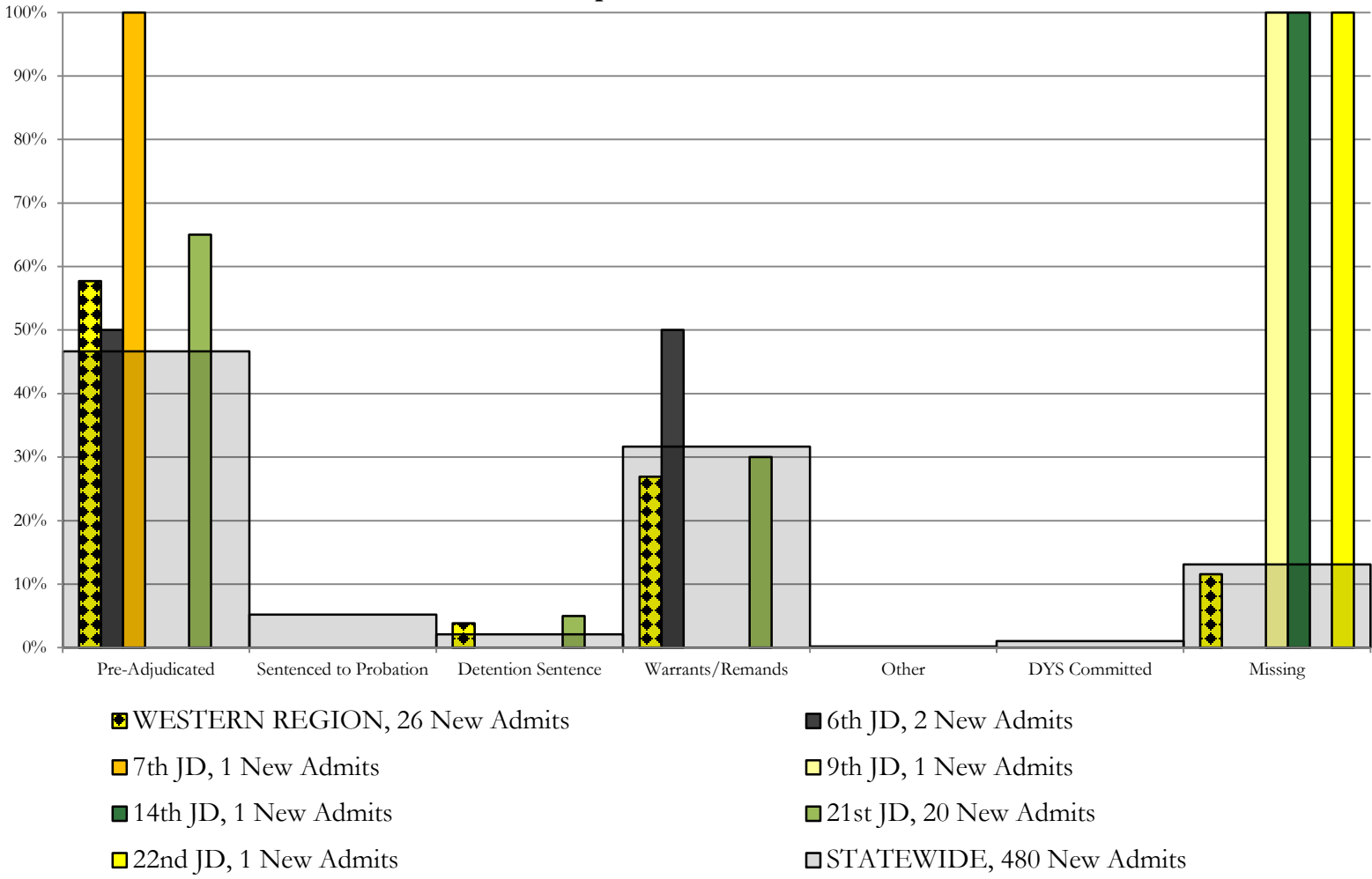
April 2019 New Admits



Western Region

CYDC Reason Detained by Judicial District

April 2019 New Admits



April 2019 CYDC Supplemental Report

DYS Detention Maximum Youth Served by Judicial District¹

Region	JD	Detention Capacity	Detention ADP		Maximum Youth Served on a Single Day ^{2,3}			
			April 2019	YTD	April 2019		YTD	
					Number of Youth	% of Detention Capacity	Number of Youth	% of Detention Capacity
<i>Central Region</i>								
	1st	37	12.4	20.3	16	43.2%	34	91.9%
	2nd	64	39.4	40.4	58	90.6%	59	92.2%
	5th	4	1.0	1.1	1	25.0%	4	100.0%
	18th	61	38.5	42.9	44	72.1%	58	95.1%
Central Region		166	91.3	104.6	110	66.3%	134	80.7%
<i>Northeast Region</i>								
	8th	21	9.9	10.9	16	76.2%	18	85.7%
	13th	5	3.6	3.7	7	140.0%	9	180.0%
	17th	30	22.9	21.9	28	93.3%	30	100.0%
	19th	25	19.3	18.9	27	108.0%	27	108.0%
	20th	13	9.5	6.9	13	100.0%	13	100.0%
Northeast Region		94	65.2	62.3	80	85.1%	80	85.1%
<i>Southern Region</i>								
	3rd	2	2.0	1.9	3	150.0%	4	200.0%
	4th	51	44.0	44.7	51	100.0%	53	103.9%
	10th	13	10.1	7.4	14	107.7%	14	107.7%
	11th	8	4.3	3.0	7	87.5%	7	87.5%
	12th	4	4.0	2.1	5	125.0%	5	125.0%
	15th	2	1.0	1.4	1	50.0%	4	200.0%
	16th	3	1.0	1.1	3	100.0%	3	100.0%
Southern Region		83	66.4	61.7	77	92.8%	77	92.8%
<i>Western Region</i>								
	6th	5	1.1	1.6	2	40.0%	4	80.0%
	7th	7	1.1	2.9	2	28.6%	6	85.7%
	9th	6	2.2	2.2	4	66.7%	6	100.0%
	14th	3	1.1	0.4	2	66.7%	2	66.7%
	21st	14	11.6	12.5	15	107.1%	17	121.4%
	22nd	4	0.3	0.8	1	25.0%	4	100.0%
Western Region		39	17.3	20.4	20	51.3%	28	71.8%
<i>Missing JD or Multiple JDs</i>			1.4	2.5				
Statewide		382	241.7	251.5	283	74.1%	289	75.7%

¹ Maximum youth served is the highest number of youth in detention on a single day during the month or fiscal year.

² Regional figures are not the sum of judicial districts, but represent the maximum count on one day for the entire region.

³ State figures are not the sum of regional figures, but represent the maximum count on one day for the entire state.

April 2019 CYDC Supplemental Report

CYDC Community ADP by Judicial District

Region	JD	Committed		Diversion		ICJ		Municipal		Pre-Adjudicated		Sentenced		VCO		Total	
		April 2019	YTD	April 2019	YTD	April 2019	YTD	April 2019	YTD	April 2019	YTD	April 2019	YTD	April 2019	YTD	April 2019	YTD
<i>Central Region</i>																	
	1st	1.0	0.7	3.4	0.9	0.0	0.0	67.1	44.4	145.2	142.9	28.9	30.7	0.0	0.0	245.6	219.6
	2nd	4.5	0.9	0.0	0.0	0.2	0.1	0.0	0.0	163.0	127.4	29.2	16.3	0.0	0.0	196.9	144.7
	5th	0.0	0.0	11.2	12.5	0.0	0.0	0.0	0.0	6.1	7.1	28.0	32.8	0.0	0.0	45.3	52.4
	18th	2.8	1.1	0.0	0.0	0.0	0.1	0.9	0.1	292.0	259.8	30.4	24.8	0.0	0.0	326.1	286.0
Central Total		8.3	2.7	14.6	13.4	0.2	0.2	68.1	44.5	606.3	537.2	116.5	104.7	0.0	0.0	814.0	702.7
<i>Northeast Region</i>																	
	8th	0.0	0.0	3.0	2.9	0.0	0.0	0.0	0.0	65.5	49.7	48.0	32.6	0.0	0.0	116.5	85.3
	13th	0.0	0.0	0.0	0.0	0.0	0.0	0.0	0.8	27.1	25.7	2.0	2.7	1.0	2.2	30.1	31.4
	17th	1.0	0.6	0.0	0.0	0.0	0.0	0.1	0.0	305.3	258.7	92.5	83.8	0.0	0.0	398.9	343.2
	19th	0.2	0.3	3.0	3.1	0.0	0.1	0.0	0.2	66.9	59.2	42.1	32.4	1.0	1.0	113.3	96.2
	20th	5.0	3.9	14.0	11.4	0.0	0.0	0.0	0.0	144.9	103.8	41.0	34.5	12.0	12.8	216.9	166.4
Northeast Total		6.2	4.9	20.0	17.5	0.0	0.1	0.1	1.1	609.8	497.1	225.6	186.0	14.0	16.0	875.7	722.6
<i>Southern Region</i>																	
	3rd	0.0	0.0	0.0	0.0	0.0	0.0	0.0	0.0	13.4	8.4	10.0	8.0	0.0	0.0	23.4	16.4
	4th	7.0	2.6	0.0	0.0	0.0	0.0	20.3	26.0	168.2	128.2	31.8	34.2	0.0	0.0	227.4	191.0
	10th	0.2	0.0	0.0	0.3	1.0	1.0	2.0	2.0	24.0	23.1	9.0	7.9	1.1	0.7	37.2	35.1
	11th	1.0	1.0	0.0	0.0	0.0	0.0	11.0	9.1	37.5	27.3	23.7	19.3	0.0	0.0	73.2	56.6
	12th	0.0	0.0	4.0	2.0	0.0	0.0	2.0	3.9	14.4	12.9	2.7	0.8	0.2	0.0	23.4	19.6
	15th	0.0	0.0	1.0	1.2	0.0	0.0	0.0	0.0	3.0	2.7	14.8	7.1	0.0	0.0	18.8	10.9
	16th	0.0	0.0	0.0	0.0	0.0	0.0	0.0	0.0	4.5	6.1	3.0	2.7	12.0	14.0	19.5	22.8
Southern Total		8.2	3.6	5.0	3.4	1.0	1.0	35.3	40.9	265.1	208.7	95.0	80.0	13.3	14.7	423.0	352.3
<i>Western Region</i>																	
	6th	0.0	0.0	0.0	0.0	0.0	0.0	0.0	0.0	8.6	7.3	0.7	0.1	0.0	0.0	9.2	7.4
	7th	0.0	0.0	12.3	8.4	0.0	0.0	2.0	1.0	7.2	10.9	10.7	11.7	0.0	0.0	32.2	31.9
	9th	0.0	0.0	1.0	1.2	0.0	0.0	2.0	4.3	13.8	9.6	1.0	3.0	0.0	0.0	17.9	18.1
	14th	0.0	0.0	13.0	6.6	0.0	0.0	2.0	2.4	6.7	4.3	1.0	0.8	0.0	0.0	22.6	14.2
	21st	0.0	0.0	0.0	0.0	0.0	0.0	0.0	0.0	48.3	42.8	26.7	20.9	0.0	0.0	75.1	63.7
	22nd	0.0	0.0	0.0	0.0	0.0	0.0	0.0	0.0	8.2	8.0	16.0	10.5	0.0	0.0	24.2	18.5
Western Total		0.0	0.0	26.3	16.2	0.0	0.0	6.0	7.8	92.8	82.8	56.1	47.1	0.0	0.0	181.2	153.8
Statewide Total		22.7	11.2	65.9	50.4	1.2	1.3	109.5	94.3	1574.0	1325.8	493.3	417.7	27.3	30.7	2293.9	1931.4