

March 2019
FY 2018-2019
CYDC JDSAG SUPPLEMENTAL REPORT

Prepared by the Division of Youth Services (DYS)

Data Management & Analysis

April 23, 2019



COLORADO

**Office of Children,
Youth & Families**

Division of Youth Services

March 2019 CYDC Supplemental Report

DYS Commitment ADP & New Commitments by Judicial District

Region	JD ¹	2019 Population Estimates ²	ADP ³		New Commitments		
			March 2019	YTD	March 2019	YTD	YTD Rate ⁴
<i>Central Region</i>							
	1st	55,734	83.3	85.4	4	40	7.2
	2nd	56,489	78.4	85.2	1	27	4.8
	5th	9,445	7.9	6.3	0	4	4.2
	18th	117,328	92.2	92.1	5	35	3.0
Central Total		238,996	261.8	269.0	10	106	4.4
<i>Northeast Region</i>							
	8th	34,282	21.4	23.3	0	7	2.0
	13th	8,510	1.9	3.8	0	1	1.2
	17th	70,426	60.1	60.2	1	21	3.0
	19th	37,897	42.2	47.4	1	14	3.7
	20th	31,849	2.0	4.1	0	0	0.0
Northeast Total		182,964	127.6	138.8	2	43	2.4
<i>Southern Region</i>							
	3rd	1,805	0.0	0.0	0	0	0.0
	4th	81,988	79.4	90.7	1	31	3.8
	10th	18,298	13.4	15.5	0	4	2.2
	11th	7,228	5.0	5.3	0	1	1.4
	12th	5,295	1.0	1.7	0	0	0.0
	15th	2,106	2.9	5.4	0	1	4.7
	16th	2,796	1.0	0.5	0	0	0.0
Southern Total		119,516	102.7	119.1	1	37	3.1
<i>Western Region</i>							
	6th	7,337	5.4	4.6	0	3	4.1
	7th	10,703	9.1	9.2	1	5	4.7
	9th	8,691	6.0	5.8	0	1	1.2
	14th	5,745	1.7	2.2	0	1	1.7
	21st	16,228	34.9	34.3	2	20	12.3
	22nd	3,215	4.0	5.6	0	1	3.1
Western Total		51,919	61.0	61.6	3	31	6.0
Statewide Total		593,395	553.0	588.5	16	217	3.7

¹ JD represents the judicial district in which the client was committed. Regional totals are a sum of their respective judicial districts. Regional totals reported here may differ slightly from those reported in the Monthly Population Report, where region is defined by active caseloads.

² Source: DOLA 2019 Estimates.

³ Due to rounding, totals shown may not be an exact sum of the subtotals.

⁴ Per 10,000 youth in the population.

March 2019 CYDC Supplemental Report

DYS Detention ADP and New Detention Admissions by Judicial District

Region	JD	2019 Population Estimates ¹	ADP		New Admits		
			March 2019	YTD	March 2019	YTD	YTD New Admit Rate ²
<i>Central Region</i>							
	1st	55,734	17.6	21.3	21	349	62.6
	2nd	56,489	41.5	40.4	54	602	106.6
	5th	9,445	0.5	1.1	2	24	25.4
	18th	117,328	37.3	44.0	81	687	58.6
Central Total		238,996	97.0	106.7	158	1,662	69.5
<i>Northeast Region</i>							
	8th	34,282	11.0	11.0	21	208	60.7
	13th	8,510	3.8	3.7	4	60	70.5
	17th	70,426	18.2	21.5	28	403	57.2
	19th	37,897	16.7	18.8	24	324	85.5
	20th	31,849	7.5	6.6	5	85	26.7
Northeast Total		182,964	57.2	61.7	82	1,080	59.0
<i>Southern Region</i>							
	3rd	1,805	1.0	1.6	0	10	55.4
	4th	81,988	42.5	44.8	54	513	62.6
	10th	18,298	7.8	7.2	17	146	79.8
	11th	7,228	3.7	3.2	7	69	95.5
	12th	5,295	3.1	1.9	1	34	64.2
	15th	2,106	1.0	1.4	1	15	71.2
	16th	2,796	1.0	1.1	0	10	35.8
Southern Total		119,516	60.3	61.1	80	797	66.7
<i>Western Region</i>							
	6th	7,337	0.5	1.7	1	21	28.6
	7th	10,703	2.4	3.2	1	49	45.8
	9th	8,691	2.6	2.1	4	22	25.3
	14th	5,745	0.4	0.3	2	4	7.0
	21st	16,228	12.7	12.6	19	183	112.8
	22nd	3,215	1.1	0.9	2	13	40.4
Western Total		51,919	19.6	20.8	29	292	56.2
<i>Missing JD or Multiple JDs</i>			<i>1.5</i>	<i>2.5</i>			
Statewide Total		593,395	235.6	252.8	349	3,831	64.6

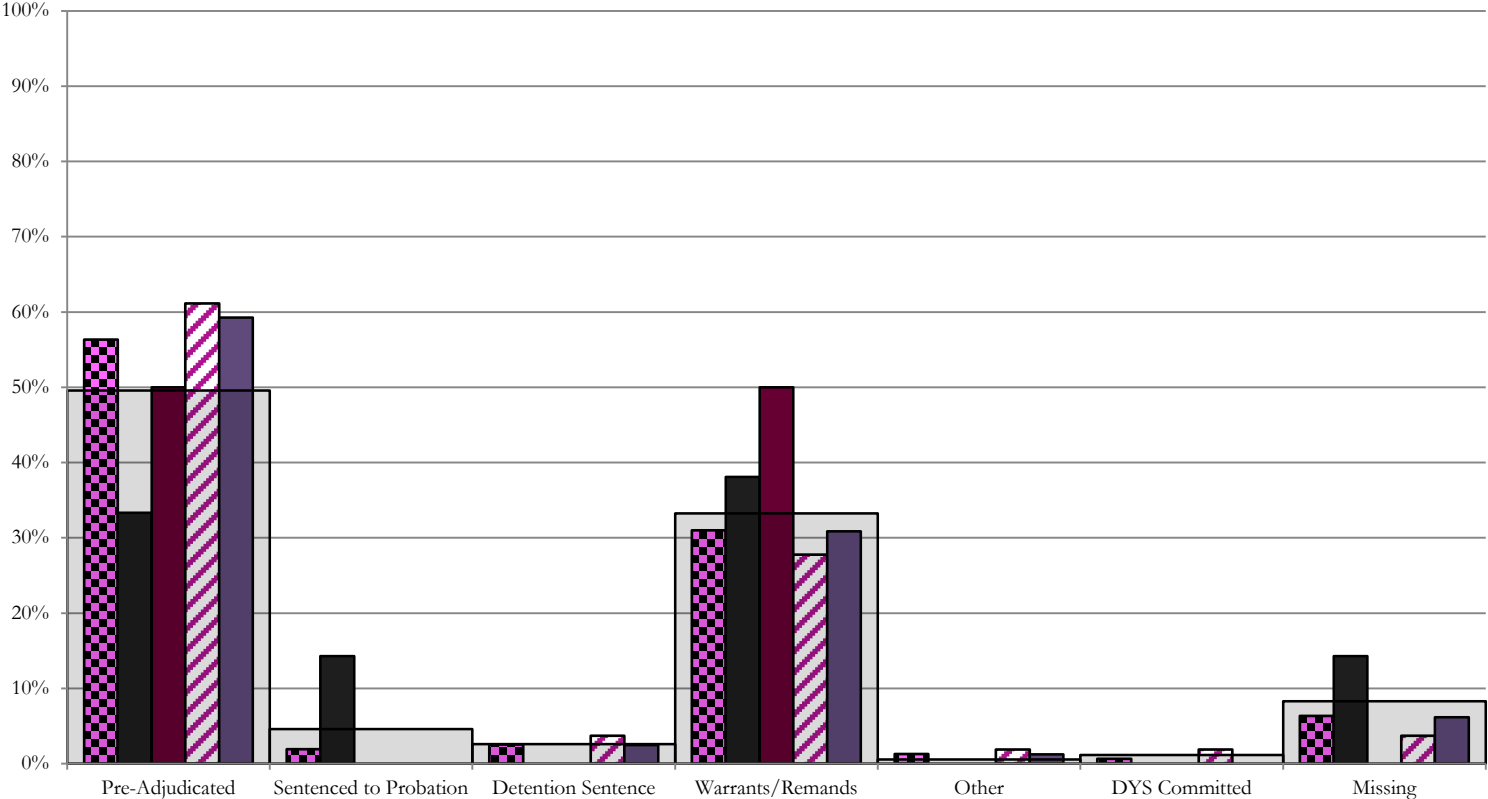
¹ Source: DOLA 2019 Estimates.

² Per 10,000 youth in the population.

March 2019 CYDC Supplemental Report

DYS Detention LOS by Judicial District				
Region	JD	YTD Detention Releases	YTD LOS (days)	LOS (days) Compared to State AVG
<i>Central Region</i>				
	1st	339	16.6	-1.3
	2nd	602	15.4	-2.5
	5th	24	9.6	-8.3
	18th	695	17.2	-0.7
Central Total		1,660	16.3	-1.6
<i>Northeast Region</i>				
	8th	213	14.5	-3.4
	13th	61	15.7	-2.2
	17th	405	13.7	-4.3
	19th	321	13.6	-4.3
	20th	84	20.2	2.3
Northeast Total		1,084	14.4	-3.5
<i>Southern Region</i>				
	3rd	8	2.8	-15.1
	4th	515	25.4	7.5
	10th	146	9.0	-9.0
	11th	71	9.1	-8.8
	12th	34	12.6	-5.3
	15th	17	16.3	-1.6
	16th	13	25.0	7.1
Southern Total		804	20.0	2.1
<i>Western Region</i>				
	6th	18	20.9	3.0
	7th	46	11.7	-6.2
	9th	19	9.9	-8.0
	14th	4	49.8	31.9
	21st	171	14.6	-3.3
	22nd	14	16.2	-1.7
Western Total		272	14.8	-3.1
Statewide Total		3,838	17.9	-

Central Region CYDC Reason Detained by Judicial District March 2019 New Admits



■ CENTRAL REGION, 158 New Admits

■ 5th JD, 2 New Admits

■ 18th JD, 81 New Admits

■ 1st JD, 21 New Admits

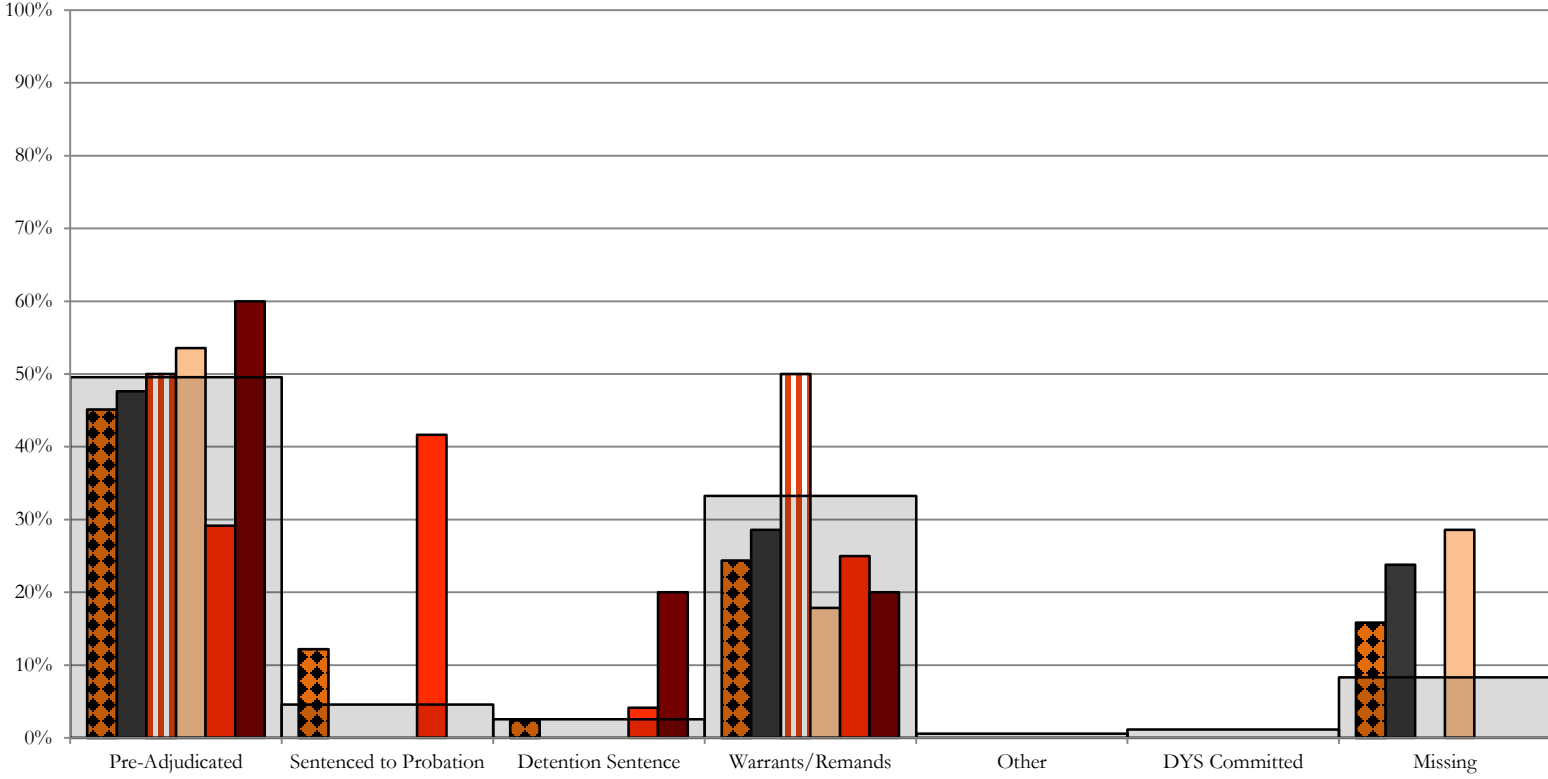
■ 2nd JD, 54 New Admits

■ STATEWIDE, 349 New Admits

Northeast Region

CYDC Reason Detained by Judicial District

March 2019 New Admits

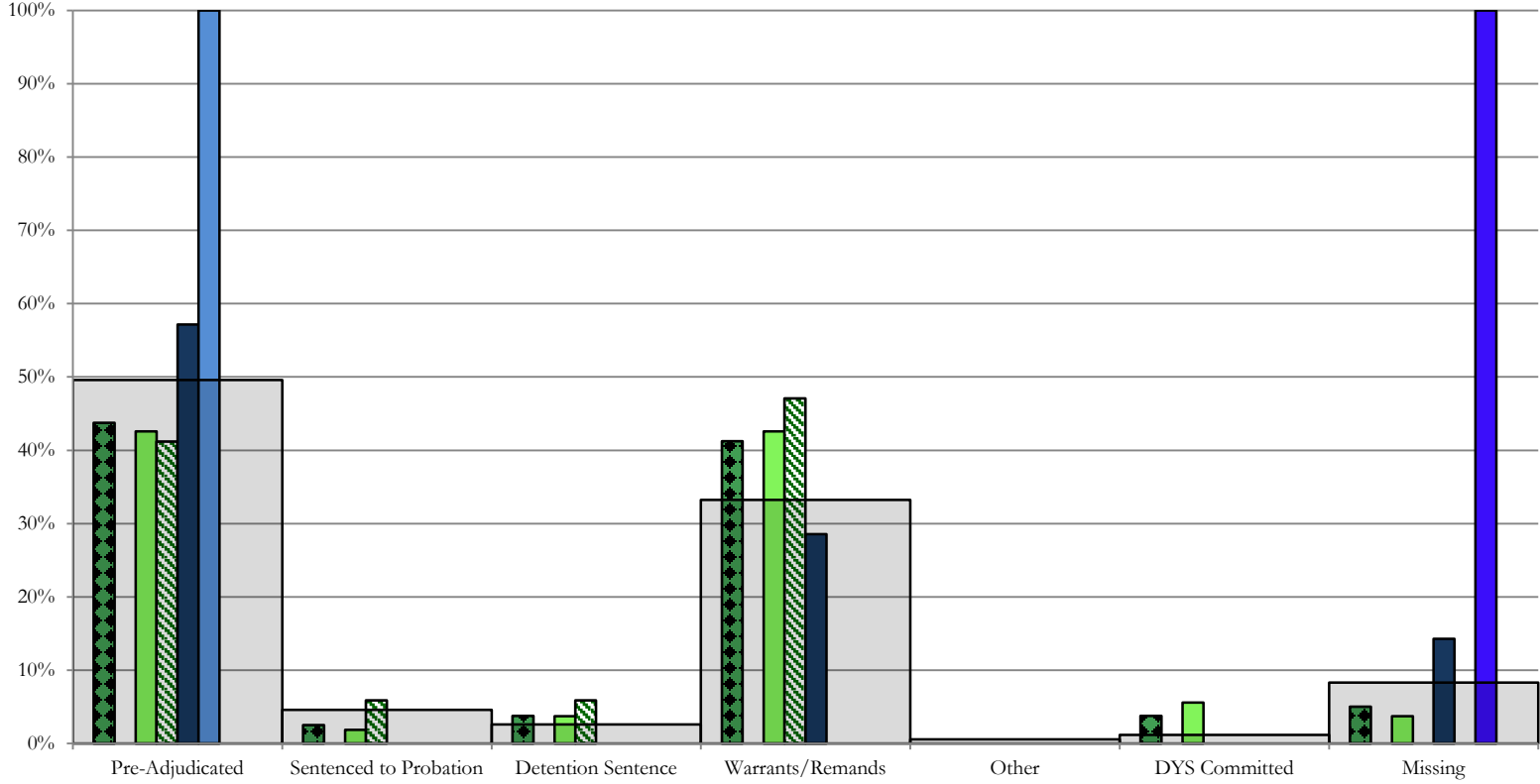


- NORTHEAST REGION, 82 New Admits
- 8th JD, 21 New Admits
- 13th JD, 4 New Admits
- 17th JD, 28 New Admits
- 19th JD, 24 New Admits
- 20th JD, 5 New Admits
- STATEWIDE, 349 New Admits

Southern Region

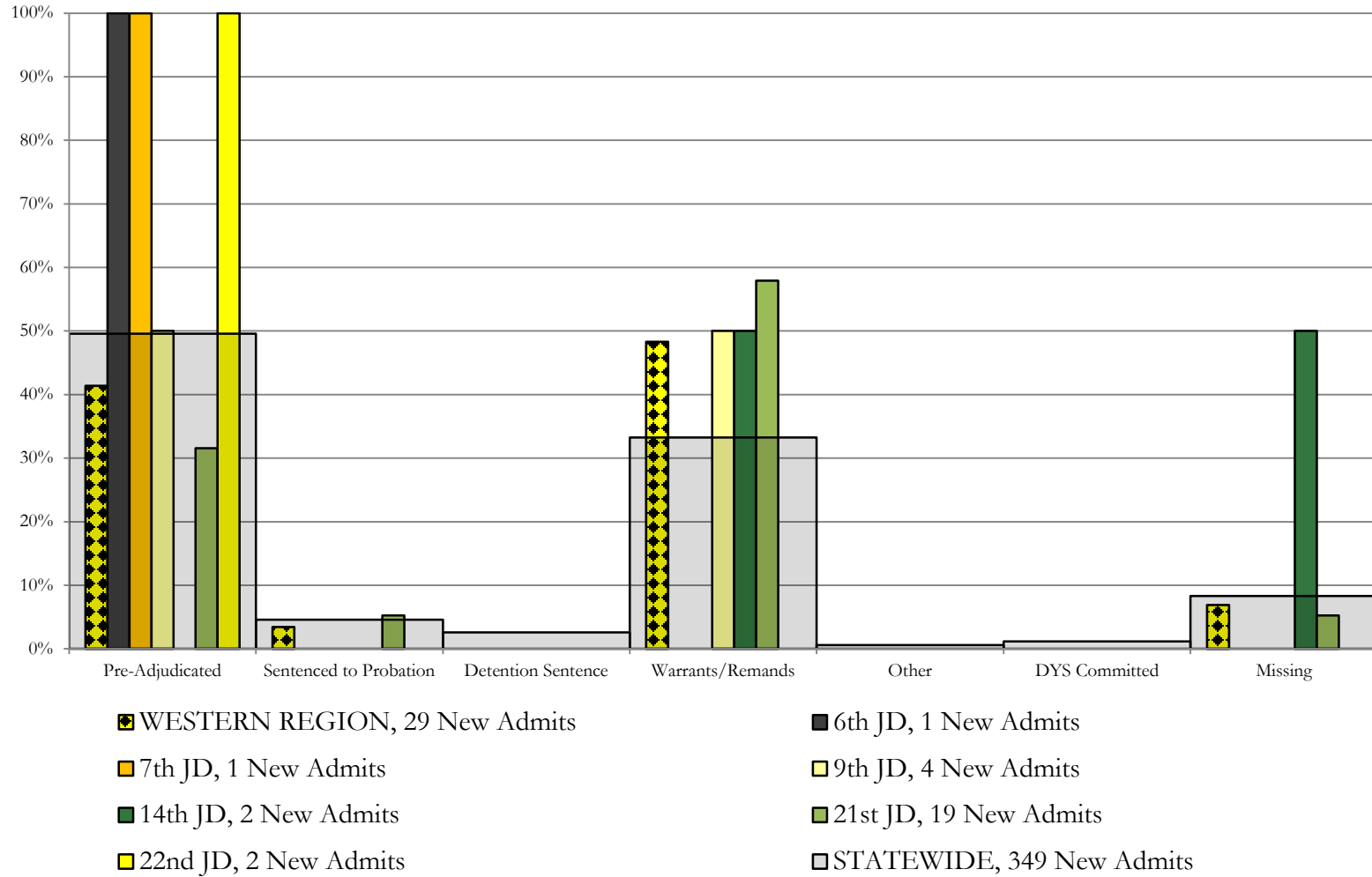
CYDC Reason Detained by Judicial District

March 2019 New Admits



- SOUTHERN REGION, 80 New Admits
- 4th JD, 54 New Admits
- 11th JD, 7 New Admits
- 15th JD, 1 New Admits
- STATEWIDE, 349 New Admits
- 3rd JD, 0 New Admits
- 10th JD, 17 New Admits
- 12th JD, 1 New Admits
- 16th JD, 0 New Admits

Western Region CYDC Reason Detained by Judicial District March 2019 New Admits



March 2019 CYDC Supplemental Report

DYS Detention Maximum Youth Served by Judicial District¹

Region	JD	Detention Capacity	Detention ADP		Maximum Youth Served on a Single Day ^{2,3}			
			March 2019	YTD	March 2019		YTD	
					Number of Youth	% of Detention Capacity	Number of Youth	% of Detention Capacity
<i>Central Region</i>								
	1st	37	17.6	21.3	22	59.5%	34	91.9%
	2nd	64	41.5	40.4	50	78.1%	59	92.2%
	5th	4	0.5	1.1	2	50.0%	4	100.0%
	18th	61	37.3	44.0	46	75.4%	58	95.1%
Central Region		166	97.0	106.7	111	66.9%	134	80.7%
<i>Northeast Region</i>								
	8th	21	11.0	11.0	15	71.4%	18	85.7%
	13th	5	3.8	3.7	5	100.0%	9	180.0%
	17th	30	18.2	21.5	29	96.7%	30	100.0%
	19th	25	16.7	18.8	21	84.0%	27	108.0%
	20th	13	7.5	6.6	11	84.6%	12	92.3%
Northeast Region		94	57.2	61.7	77	81.9%	78	83.0%
<i>Southern Region</i>								
	3rd	2	1.0	1.6	2	100.0%	4	200.0%
	4th	51	42.5	44.8	53	103.9%	53	103.9%
	10th	13	7.8	7.2	11	84.6%	13	100.0%
	11th	8	3.7	3.2	6	75.0%	8	100.0%
	12th	4	3.1	1.9	4	100.0%	4	100.0%
	15th	2	1.0	1.4	2	100.0%	4	200.0%
	16th	3	1.0	1.1	2	66.7%	3	100.0%
Southern Region		83	60.3	61.1	74	89.2%	74	89.2%
<i>Western Region</i>								
	6th	5	0.5	1.7	1	20.0%	4	80.0%
	7th	7	2.4	3.2	3	42.9%	6	85.7%
	9th	6	2.6	2.1	4	66.7%	6	100.0%
	14th	3	0.4	0.3	1	33.3%	2	66.7%
	21st	14	12.7	12.6	17	121.4%	17	121.4%
	22nd	4	1.1	0.9	2	50.0%	4	100.0%
Western Region		39	19.6	20.8	23	59.0%	28	71.8%
<i>Missing JD or Multiple JDs</i>			1.5	2.5				
Statewide		382	235.6	252.8	265	69.4%	289	75.7%

¹ Maximum youth served is the highest number of youth in detention on a single day during the month or fiscal year.

² Regional figures are not the sum of judicial districts, but represent the maximum count on one day for the entire region.

³ State figures are not the sum of regional figures, but represent the maximum count on one day for the entire state.

March 2019 CYDC Supplemental Report

CYDC Community ADP by Judicial District

Region	JD	Committed		Diversion		ICJ		Municipal		Pre-Adjudicated		Sentenced		VCO		Total	
		March 2019	YTD	March 2019	YTD	March 2019	YTD	March 2019	YTD	March 2019	YTD	March 2019	YTD	March 2019	YTD	March 2019	YTD
<i>Central Region</i>																	
	1st	1.0	0.6	2.2	0.6	0.0	0.0	78.1	45.8	151.1	144.6	29.2	29.8	0.0	0.0	261.5	221.5
	2nd	5.0	1.0	0.0	0.0	1.0	0.1	0.0	0.0	204.0	136.6	34.1	17.1	0.0	0.0	244.0	154.8
	5th	0.0	0.0	8.0	12.1	0.0	0.0	0.0	0.0	5.7	7.2	27.7	32.5	0.0	0.0	41.3	51.8
	18th	1.6	0.9	0.0	0.0	0.0	0.1	0.0	0.0	288.1	256.3	30.7	26.8	0.0	0.0	320.4	284.2
Central Total		7.6	2.5	10.2	12.7	1.0	0.3	78.1	45.8	648.8	544.7	121.6	106.2	0.0	0.0	867.3	712.3
<i>Northeast Region</i>																	
	8th	0.0	0.0	3.0	2.9	0.0	0.0	0.0	0.0	65.6	48.8	46.5	30.9	0.0	0.0	115.1	82.7
	13th	0.0	0.0	0.0	0.0	0.0	0.0	0.0	0.9	27.9	25.7	3.1	2.9	1.0	2.3	32.0	31.8
	17th	1.0	0.6	0.0	0.0	0.0	0.0	0.3	0.0	301.9	254.1	92.0	82.9	0.0	0.0	395.2	337.7
	19th	0.9	0.4	3.0	3.1	0.0	0.1	0.0	0.2	67.6	59.3	38.5	32.3	1.0	1.0	111.0	96.3
	20th	5.0	3.8	14.0	11.2	0.0	0.0	0.0	0.0	134.8	99.3	41.0	33.8	12.0	12.9	206.7	160.8
Northeast Total		6.9	4.7	20.0	17.2	0.0	0.1	0.3	1.2	597.8	487.2	221.0	182.7	14.0	16.2	860.0	709.3
<i>Southern Region</i>																	
	3rd	0.0	0.0	0.0	0.0	0.0	0.0	0.0	0.0	11.0	7.8	10.0	7.8	0.0	0.0	21.0	15.6
	4th	3.6	2.1	0.0	0.0	0.0	0.0	14.4	23.1	137.0	124.3	26.9	31.9	0.0	0.0	181.9	181.5
	10th	1.0	1.0	0.0	0.3	1.0	1.0	2.0	2.0	22.3	23.0	8.3	7.9	1.7	0.7	36.3	36.0
	11th	1.0	1.0	0.0	0.0	0.0	0.0	7.1	7.8	41.3	26.5	22.5	18.7	0.0	0.0	71.8	54.0
	12th	0.0	0.0	4.2	1.8	0.0	0.0	5.0	4.2	15.0	12.7	2.0	0.6	0.0	0.0	26.2	19.4
	15th	0.0	0.0	1.0	1.2	0.0	0.0	0.0	0.0	3.9	2.8	13.8	7.2	0.0	0.0	18.6	11.1
	16th	0.0	0.0	0.0	0.0	0.0	0.0	0.0	0.0	4.0	6.3	3.0	2.7	11.9	14.2	18.9	23.1
Southern Total		5.6	4.1	5.2	3.3	1.0	1.0	28.5	37.1	234.4	203.5	86.5	76.8	13.6	14.9	374.7	340.7
<i>Western Region</i>																	
	6th	0.0	0.0	0.0	0.0	0.0	0.0	0.0	0.0	8.8	7.1	0.0	0.0	0.0	0.0	8.8	7.2
	7th	0.0	0.0	13.0	7.9	0.0	0.0	1.0	0.8	12.4	11.8	12.2	12.0	0.0	0.0	38.6	32.6
	9th	0.0	0.0	0.8	1.0	0.0	0.0	3.1	3.8	12.5	9.1	1.4	2.3	0.0	0.0	17.8	16.3
	14th	0.0	0.0	10.0	4.9	0.0	0.0	2.0	1.5	5.7	4.1	0.4	0.8	0.0	0.0	18.0	11.3
	21st	0.0	0.0	0.0	0.0	0.0	0.0	0.0	0.0	51.9	44.8	26.9	19.9	0.0	0.0	78.7	64.7
	22nd	0.0	0.0	0.0	0.0	0.0	0.0	0.0	0.0	7.5	7.9	15.8	9.9	0.0	0.0	23.2	17.9
Western Total		0.0	0.0	23.8	13.8	0.0	0.0	6.1	6.2	98.7	84.9	56.5	44.9	0.0	0.0	185.1	149.8
Statewide Total		20.1	11.4	59.2	47.0	2.0	1.4	112.9	90.3	1579.7	1320.3	485.6	410.7	27.6	31.1	2287.1	1912.1