

February 2019 FY 2018-2019 CYDC JDSAG SUPPLEMENTAL REPORT

Prepared by the Division of Youth Services (DYS)
Data Management & Analysis
March 30, 2019



COLORADO

**Office of Children,
Youth & Families**

Division of Youth Services

February 2019 CYDC Supplemental Report

DYS Commitment ADP & New Commitments by Judicial District

Region	JD ¹	2019 Population Estimates ²	ADP ³		New Commitments		
			February 2019	YTD	February 2019	YTD	YTD Rate ⁴
<i>Central Region</i>							
	1st	55,734	79.9	85.7	3	36	6.5
	2nd	56,489	80.6	86.1	1	25	4.4
	5th	9,445	7.2	6.1	2	4	4.2
	18th	117,328	91.4	92.1	1	30	2.6
Central Total		238,996	259.1	269.9	7	95	4.0
<i>Northeast Region</i>							
	8th	34,282	24.1	23.6	1	7	2.0
	13th	8,510	2.1	4.0	1	1	1.2
	17th	70,426	61.3	60.2	2	20	2.8
	19th	37,897	46.1	48.0	1	13	3.4
	20th	31,849	2.1	4.3	0	0	0.0
Northeast Total		182,964	135.8	140.2	5	41	2.2
<i>Southern Region</i>							
	3rd	1,805	0.0	0.0	0	0	0.0
	4th	81,988	83.2	93.1	3	30	3.7
	10th	18,298	12.2	15.7	2	4	2.2
	11th	7,228	5.2	5.4	0	1	1.4
	12th	5,295	1.0	1.8	0	0	0.0
	15th	2,106	4.4	5.7	0	1	4.7
	16th	2,796	1.0	0.4	0	0	0.0
Southern Total		119,516	106.9	122.1	5	36	3.0
<i>Western Region</i>							
	6th	7,337	5.7	4.5	1	3	4.1
	7th	10,703	8.1	9.2	1	4	3.7
	9th	8,691	5.6	5.8	0	1	1.2
	14th	5,745	2.0	2.3	0	1	1.7
	21st	16,228	33.6	34.2	1	17	10.5
	22nd	3,215	4.8	5.8	0	1	3.1
Western Total		51,919	59.8	61.7	3	27	5.2
Statewide Total		593,395	561.7	593.9	20	199	3.4

¹ JD represents the judicial district in which the client was committed. Regional totals are a sum of their respective judicial districts. Regional totals reported here may differ slightly from those reported in the Monthly Population Report, where region is defined by active caseloads.

² Source: DOLA 2019 Estimates.

³ Due to rounding, totals shown may not be an exact sum of the subtotals.

⁴ Per 10,000 youth in the population.

February 2019 CYDC Supplemental Report

DYS Detention ADP and New Detention Admissions by Judicial District

Region	JD	2019 Population Estimates ¹	ADP		New Admits		
			February 2019	YTD	February 2019	YTD	YTD New Admit Rate ²
<i>Central Region</i>							
	1st	55,734	21.4	21.8	42	328	58.9
	2nd	56,489	40.8	40.2	70	548	97.0
	5th	9,445	1.4	1.2	2	22	23.3
	18th	117,328	39.6	44.8	71	606	51.7
Central Total		238,996	103.1	108.0	185	1,504	62.9
<i>Northeast Region</i>							
	8th	34,282	10.3	11.0	21	187	54.5
	13th	8,510	2.8	3.7	3	56	65.8
	17th	70,426	22.1	21.9	49	375	53.2
	19th	37,897	19.4	18.1	30	298	78.6
	20th	31,849	6.4	6.5	10	80	25.1
Northeast Total		182,964	60.9	61.3	113	996	54.4
<i>Southern Region</i>							
	3rd	1,805	1.0	1.6	0	10	55.4
	4th	81,988	39.9	45.1	45	459	56.0
	10th	18,298	8.0	7.3	10	129	70.5
	11th	7,228	4.2	2.9	14	62	85.8
	12th	5,295	3.5	1.8	3	33	62.3
	15th	2,106	1.8	1.5	1	14	66.5
	16th	2,796	1.9	1.1	3	10	35.8
Southern Total		119,516	60.2	61.2	76	717	60.0
<i>Western Region</i>							
	6th	7,337	1.2	1.8	1	20	27.3
	7th	10,703	3.4	3.2	7	48	44.8
	9th	8,691	2.6	2.1	2	18	20.7
	14th	5,745	0.0	0.3	0	2	3.5
	21st	16,228	14.0	12.6	20	164	101.1
	22nd	3,215	0.5	0.8	0	11	34.2
Western Total		51,919	21.7	20.9	30	263	50.7
<i>Missing JD or Multiple JDs</i>			3.1	2.6			
Statewide Total		593,395	249.1	254.0	404	3,480	58.6

¹ Source: DOLA 2019 Estimates.

² Per 10,000 youth in the population.

February 2019 CYDC Supplemental Report

DYS Detention LOS by Judicial District

Region	JD	YTD Detention Releases	YTD LOS (days)	LOS (days) Compared to State AVG
<i>Central Region</i>				
	1st	317	16.7	-1.2
	2nd	538	15.4	-2.5
	5th	23	9.9	-8.0
	18th	611	17.5	-0.4
Central Total		1,489	16.5	-1.5
<i>Northeast Region</i>				
	8th	188	14.4	-3.5
	13th	59	16.0	-1.9
	17th	370	13.4	-4.5
	19th	291	13.0	-4.9
	20th	75	20.2	2.2
Northeast Total		983	14.1	-3.8
<i>Southern Region</i>				
	3rd	8	2.8	-15.1
	4th	466	26.0	8.0
	10th	131	8.3	-9.6
	11th	60	8.3	-9.6
	12th	31	10.8	-7.1
	15th	16	17.4	-0.5
	16th	11	20.9	3.0
Southern Total		723	20.1	2.2
<i>Western Region</i>				
	6th	17	21.4	3.5
	7th	44	11.7	-6.2
	9th	17	11.0	-6.9
	14th	3	66.1	48.2
	21st	151	14.1	-3.8
	22nd	13	17.2	-0.7
Western Total		245	14.8	-3.1
Statewide Total		3,453	17.9	-

February 2019 CDYC Supplemental Report

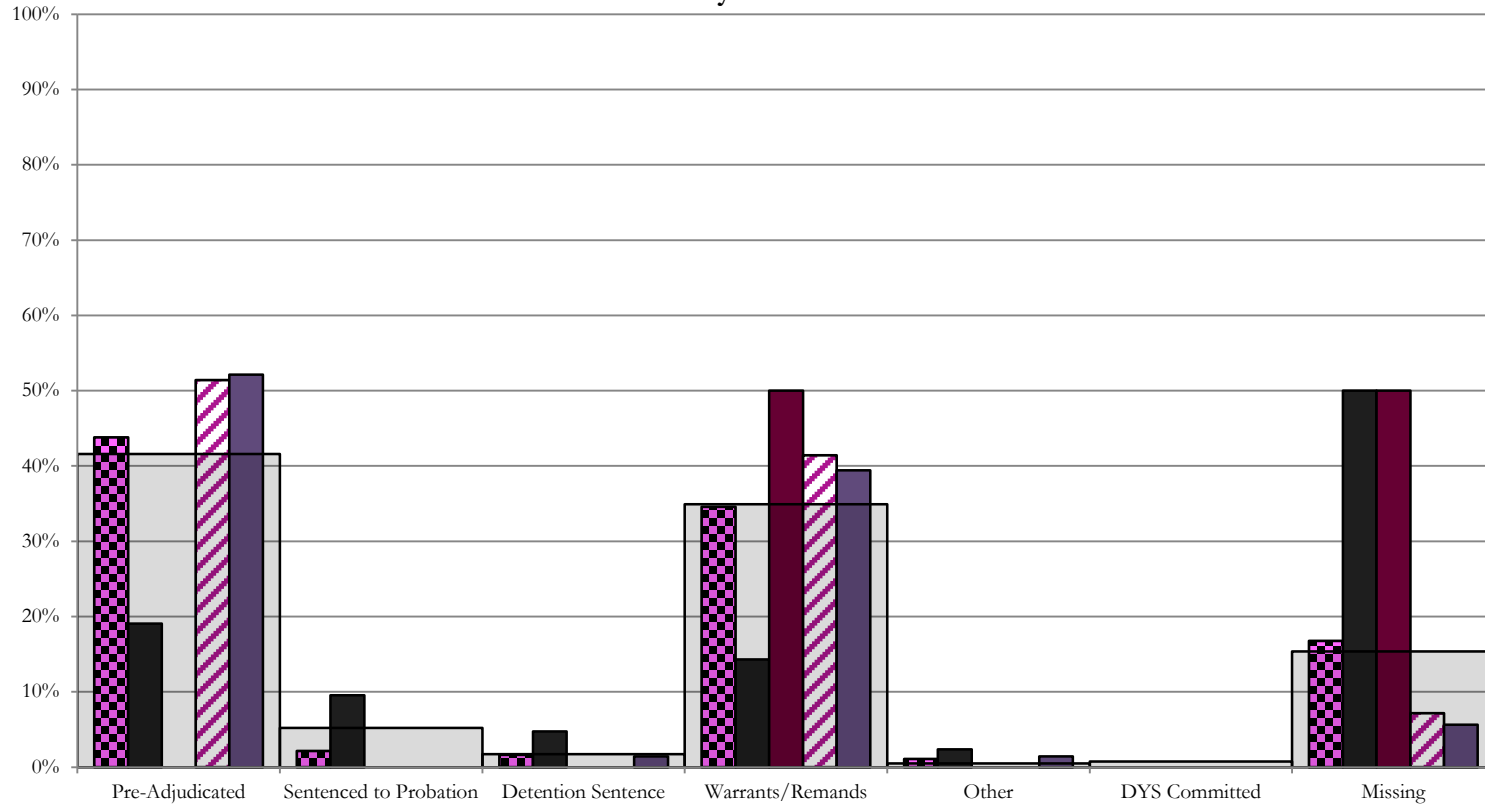
CYDC Reason Detained (RD) by Judicial District

Region	JD	Pre-Adjudicated				Sentenced to Probation				Detention Sentence								Warrants/Remands				Other						DYS Committed		Missing								
		Felony		Misdemeanor		Technical Violator		New Charges		Probation Sentence		Detention Sentence		Valid Court Order (VCO) Truancy		Awaiting DSS (Social Services) Placement		Failure to Appear (FTA)		Failure to Comply (FTC)		Interstate Compact on Juveniles (ICJ) Hold		Immigration Hold		No Bond Hold		Out-of-Country Warrant		Institutional		Parole		Missing				
		#	%	#	%	#	%	#	%	#	%	#	%	#	%	#	%	#	%	#	%	#	%	#	%	#	%	#	%	#	%	#	%	#	%			
Central Region																																						
	1st	42	5	11.9%	3	7.1%	4	9.5%	0	0.0%	0	0.0%	2	4.8%	0	0.0%	0	0.0%	1	2.4%	5	11.9%	1	2.4%	0	0.0%	0	0.0%	0	0.0%	0	0.0%	0	0.0%	0	0.0%	21	50.0%
	2nd	70	30	42.9%	6	8.6%	0	0.0%	0	0.0%	0	0.0%	0	0.0%	0	0.0%	8	11.4%	21	30.0%	0	0.0%	0	0.0%	0	0.0%	0	0.0%	0	0.0%	0	0.0%	0	0.0%	0	0.0%	5	7.1%
	5th	2	0	0.0%	0	0.0%	0	0.0%	0	0.0%	0	0.0%	0	0.0%	0	0.0%	0	0.0%	1	50.0%	0	0.0%	0	0.0%	0	0.0%	0	0.0%	0	0.0%	0	0.0%	0	0.0%	0	0.0%	1	50.0%
	18th	71	20	28.2%	17	23.9%	0	0.0%	0	0.0%	0	0.0%	1	1.4%	0	0.0%	0	0.0%	7	9.9%	21	29.6%	1	1.4%	0	0.0%	0	0.0%	0	0.0%	0	0.0%	0	0.0%	0	0.0%	4	5.6%
	Central Total	185	55	30%	26	14%	4	2.2%	0	0.0%	0	0.0%	3	1.6%	0	0.0%	0	0.0%	16	9%	48	26%	2	1.1%	0	0.0%	0	0.0%	0	0.0%	0	0.0%	0	0.0%	31	16.8%		
Northeast Region																																						
	8th	21	4	19.0%	1	4.8%	0	0.0%	0	0.0%	0	0.0%	0	0.0%	0	0.0%	2	9.5%	11	52.4%	0	0.0%	0	0.0%	0	0.0%	0	0.0%	0	0.0%	0	0.0%	0	0.0%	0	0.0%	3	14.3%
	13th	3	1	33.3%	1	33.3%	0	0.0%	0	0.0%	0	0.0%	0	0.0%	0	0.0%	0	0.0%	1	33.3%	0	0.0%	0	0.0%	0	0.0%	0	0.0%	0	0.0%	0	0.0%	0	0.0%	0	0.0%	0	0.0%
	17th	49	9	18.4%	3	6.1%	0	0.0%	0	0.0%	0	0.0%	0	0.0%	0	0.0%	4	8.2%	16	32.7%	0	0.0%	0	0.0%	0	0.0%	0	0.0%	0	0.0%	0	0.0%	0	0.0%	0	0.0%	17	34.7%
	19th	30	12	40.0%	4	13.3%	12	40.0%	0	0.0%	0	0.0%	1	3.3%	0	0.0%	0	0.0%	1	3.3%	0	0.0%	0	0.0%	0	0.0%	0	0.0%	0	0.0%	0	0.0%	0	0.0%	0	0.0%	0	0.0%
	20th	10	3	30.0%	0	0.0%	0	0.0%	0	0.0%	0	0.0%	1	10.0%	2	20.0%	0	0.0%	1	10.0%	0	0.0%	0	0.0%	0	0.0%	0	0.0%	0	0.0%	0	0.0%	0	0.0%	0	0.0%	3	30.0%
	Northeast Total	113	29	26%	9	8%	12	10.6%	0	0.0%	0	0.0%	2	1.8%	0	0.0%	2	1.8%	6	5.3%	30	27%	0	0.0%	0	0.0%	0	0.0%	0	0.0%	0	0.0%	0	0.0%	23	20%		
Southern Region																																						
	3rd	0	0	0.0%	0	0.0%	0	0.0%	0	0.0%	0	0.0%	0	0.0%	0	0.0%	0	0.0%	0	0.0%	0	0.0%	0	0.0%	0	0.0%	0	0.0%	0	0.0%	0	0.0%	0	0.0%	0	0.0%	0	0.0%
	4th	45	18	40.0%	5	11.1%	0	0.0%	3	6.7%	0	0.0%	0	0.0%	0	0.0%	4	8.9%	10	22.2%	0	0.0%	0	0.0%	0	0.0%	0	0.0%	3	6.7%	0	0.0%	0	0.0%	2	4.4%	0	0.0%
	10th	10	2	20.0%	3	30.0%	1	10.0%	0	0.0%	0	0.0%	0	0.0%	0	0.0%	2	20.0%	2	20.0%	0	0.0%	0	0.0%	0	0.0%	0	0.0%	0	0.0%	0	0.0%	0	0.0%	0	0.0%	0	0.0%
	11th	14	6	42.9%	2	14.3%	0	0.0%	0	0.0%	0	0.0%	0	0.0%	0	0.0%	0	0.0%	5	35.7%	0	0.0%	0	0.0%	0	0.0%	0	0.0%	0	0.0%	0	0.0%	0	0.0%	1	7.1%	0	0.0%
	12th	3	1	33.3%	0	0.0%	0	0.0%	0	0.0%	0	0.0%	0	0.0%	0	0.0%	0	0.0%	1	33.3%	0	0.0%	0	0.0%	0	0.0%	0	0.0%	0	0.0%	0	0.0%	0	0.0%	1	33.3%	0	0.0%
	15th	1	0	0.0%	0	0.0%	0	0.0%	0	0.0%	0	0.0%	0	0.0%	0	0.0%	0	0.0%	1	100.0%	0	0.0%	0	0.0%	0	0.0%	0	0.0%	0	0.0%	0	0.0%	0	0.0%	0	0.0%	0	0.0%
	16th	3	1	33.3%	0	0.0%	0	0.0%	1	33.3%	0	0.0%	0	0.0%	0	0.0%	1	33.3%	0	0.0%	0	0.0%	0	0.0%	0	0.0%	0	0.0%	0	0.0%	0	0.0%	0	0.0%	0	0.0%	0	0.0%
	Southern Total	76	28	37%	10	13%	1	1.3%	4	5.3%	0	0.0%	0	0.0%	0	0.0%	7	9%	19	25%	0	0.0%	0	0.0%	0	0.0%	0	0.0%	0	0.0%	3	3.9%	0	0.0%	4	5%		
Western Region																																						
	6th	1	0	0.0%	0	0.0%	0	0.0%	0	0.0%	0	0.0%	0	0.0%	0	0.0%	0	0.0%	0	0.0%	0	0.0%	0	0.0%	0	0.0%	0	0.0%	0	0.0%	0	0.0%	0	0.0%	1	100%		
	7th	7	2	28.6%	0	0.0%	0	0.0%	0	0.0%	0	0.0%	0	0.0%	0	0.0%	1	14.3%	2	28.6%	0	0.0%	0	0.0%	0	0.0%	0	0.0%	0	0.0%	0	0.0%	0	0.0%	2	29%	0	0.0%
	9th	2	0	0.0%	0	0.0%	0	0.0%	0	0.0%	0	0.0%	0	0.0%	0	0.0%	0	0.0%	2	100.0%	0	0.0%	0	0.0%	0	0.0%	0	0.0%	0	0.0%	0	0.0%	0	0.0%	0	0.0%	0	0.0%
	14th	0	0	0.0%	0	0.0%	0	0.0%	0	0.0%	0	0.0%	0	0.0%	0	0.0%	0	0.0%	0	0.0%	0	0.0%	0	0.0%	0	0.0%	0	0.0%	0	0.0%	0	0.0%	0	0.0%	0	0.0%	0	0.0%
	21st	20	5	25.0%	4	20.0%	0	0.0%	0	0.0%	0	0.0%	0	0.0%	0	0.0%	0	0.0%	10	50.0%	0	0.0%	0	0.0%	0	0.0%	0	0.0%	0	0.0%	0	0.0%	0	0.0%	1	5%	0	0.0%
	22nd	0	0	0.0%	0	0.0%	0	0.0%	0	0.0%	0	0.0%	0	0.0%	0	0.0%	0	0.0%	0	0.0%	0	0.0%	0	0.0%	0	0.0%	0	0.0%	0	0.0%	0	0.0%	0	0.0%	0	0.0%	0	0.0%
	Western Total	30	7	23%	4	13.3%	0	0.0%	0	0.0%	0	0.0%	0	0.0%	0	0.0%	1	3.3%	14	47%	0	0.0%	0	0.0%	0	0.0%	0	0.0%	0	0.0%	0	0.0%	0	0.0%	4	13%		
Individual RD Totals		404	119	29%	49	12%	17	4.2%	4	1.0%	0	0.0%	5	1.2%	0	0.0%	2	0.5%	30	7%	111	27%	2	0.5%	0	0.0%	0	0.0%	0	0.0%	0	0.0%	3	0.7%	0	0.0%	62	15%
Statewide Totals		404	168	41.6%	21	5.2%	7	1.7%	0	0.0%	0	0.0%	7	1.7%	0	0.0%	2	0.5%	141	34.9%	2	0.5%	0	0.0%	0	0.0%	0	0.0%	3	0.7%	0	0.0%	62	15%				

Central Region

CYDC Reason Detained by Judicial District

February 2019 New Admits



■ CENTRAL REGION, 185 New Admits

■ 5th JD, 2 New Admits

■ 18th JD, 71 New Admits

■ 1st JD, 42 New Admits

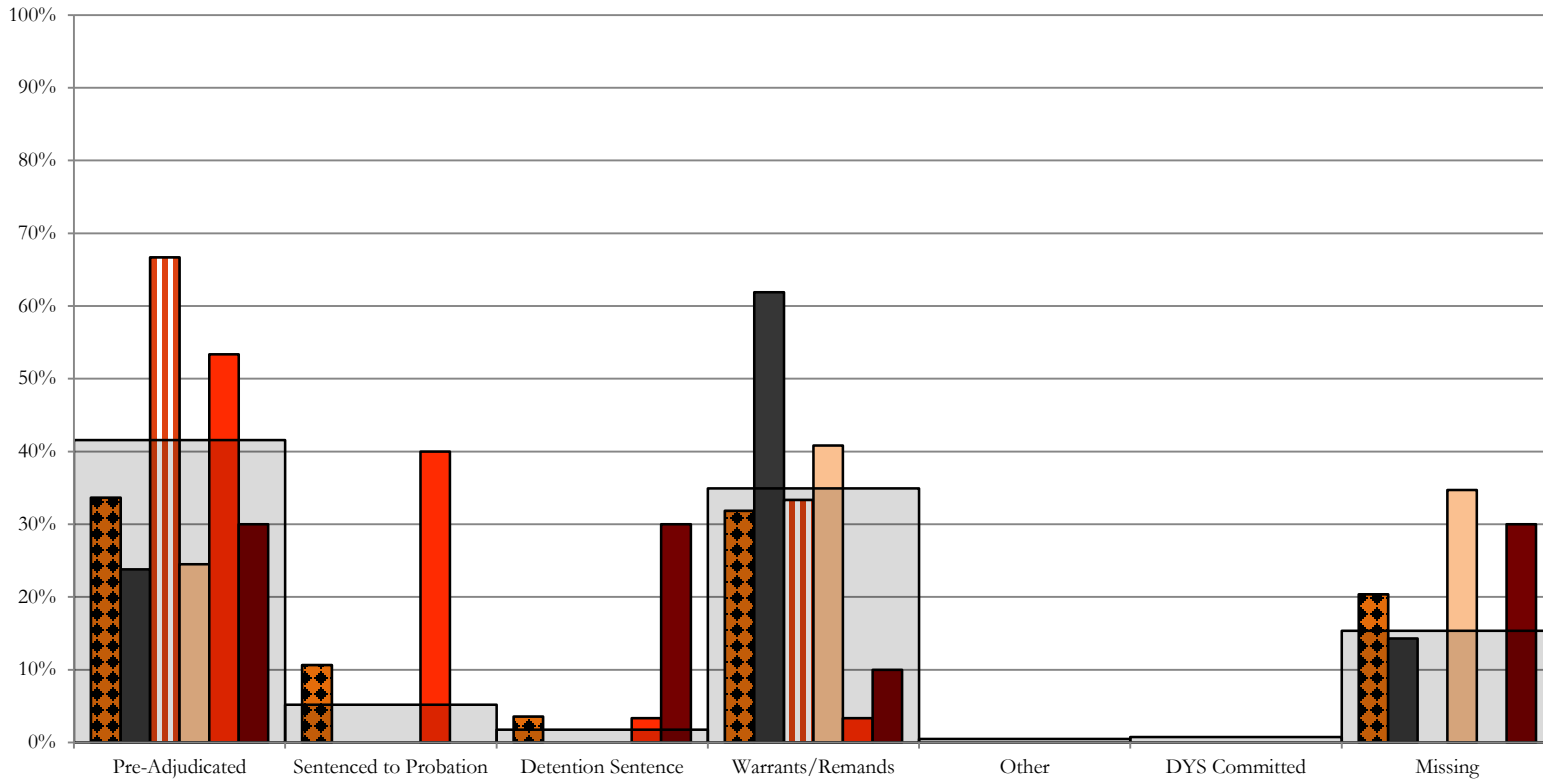
■ 2nd JD, 70 New Admits

■ STATEWIDE, 404 New Admits

Northeast Region

CYDC Reason Detained by Judicial District

February 2019 New Admits



■ NORTHEAST REGION, 113 New Admits

■ 8th JD, 21 New Admits

■ 13th JD, 3 New Admits

■ 17th JD, 49 New Admits

■ 19th JD, 30 New Admits

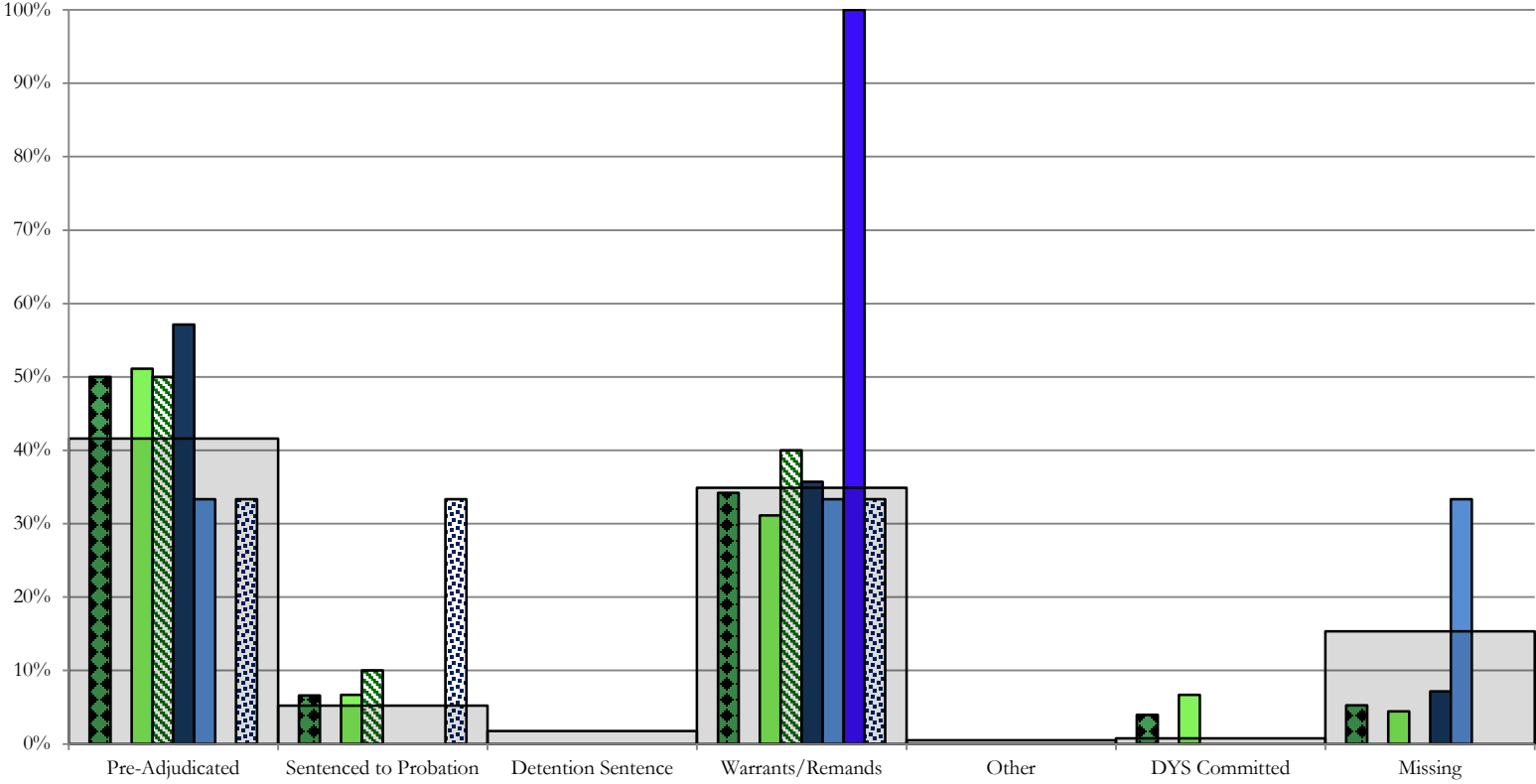
■ 20th JD, 10 New Admits

■ STATEWIDE, 404 New Admits

Southern Region

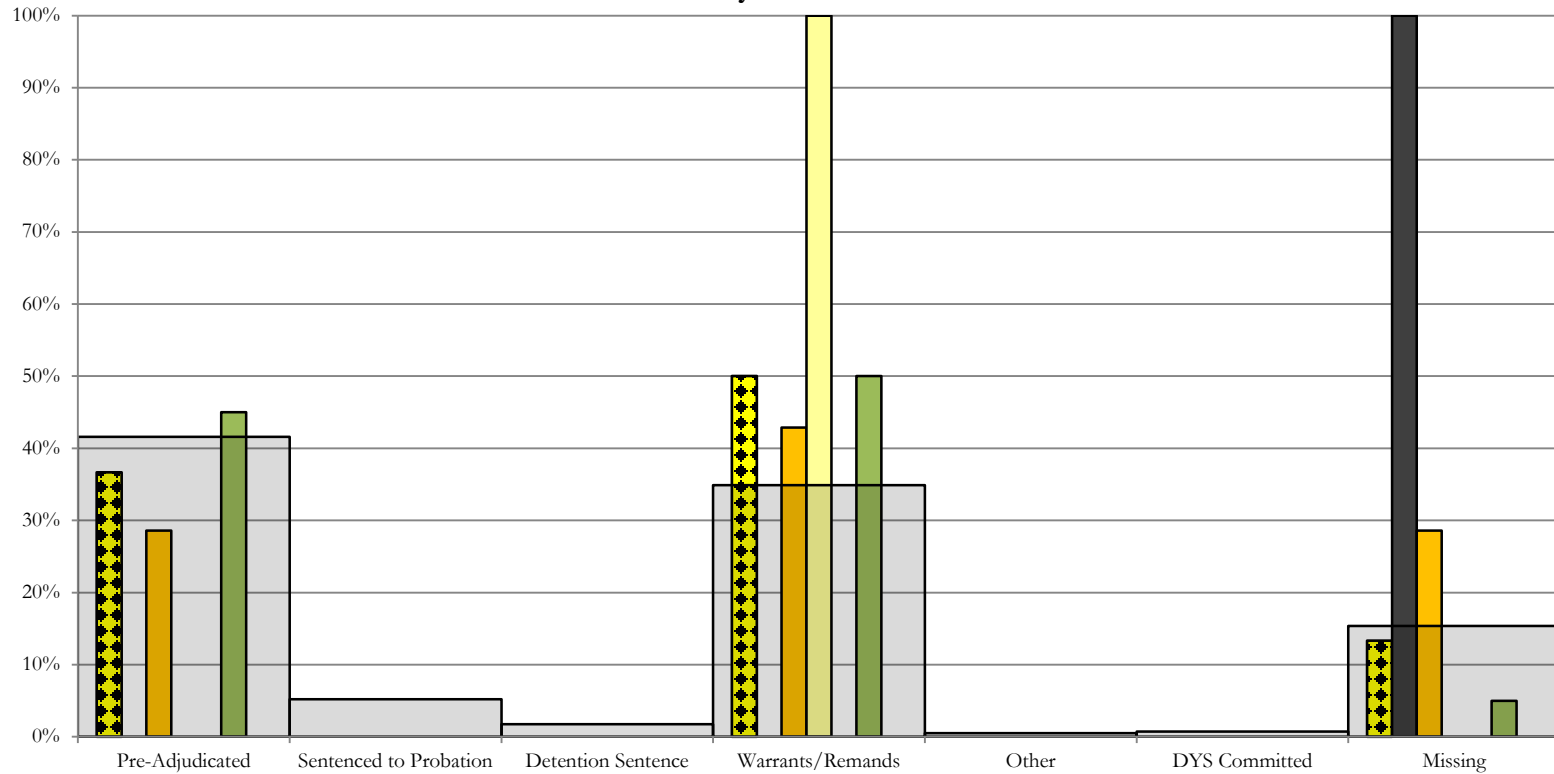
CYDC Reason Detained by Judicial District

February 2019 New Admits



- SOUTHERN REGION, 76 New Admits
- 4th JD, 45 New Admits
- 11th JD, 14 New Admits
- 15th JD, 1 New Admits
- STATEWIDE, 404 New Admits
- 3rd JD, 0 New Admits
- 10th JD, 10 New Admits
- 12th JD, 3 New Admits
- 16th JD, 3 New Admits

Western Region CYDC Reason Detained by Judicial District February 2019 New Admits



■ WESTERN REGION, 30 New Admits

■ 7th JD, 7 New Admits

■ 14th JD, 0 New Admits

■ 22nd JD, 0 New Admits

■ 6th JD, 1 New Admits

■ 9th JD, 2 New Admits

■ 21st JD, 20 New Admits

■ STATEWIDE, 404 New Admits

February 2019 CYDC Supplemental Report

DYS Detention Maximum Youth Served by Judicial District¹

Region	JD	Detention Capacity	Detention ADP		Maximum Youth Served on a Single Day ^{2,3}			
			February 2019	YTD	February 2019		YTD	
					Number of Youth	% of Detention Capacity	Number of Youth	% of Detention Capacity
<i>Central Region</i>								
	1st	37	21.4	21.8	29	78.4%	34	91.9%
	2nd	64	40.8	40.2	49	76.6%	59	92.2%
	5th	4	1.4	1.2	3	75.0%	4	100.0%
	18th	61	39.6	44.8	47	77.0%	58	95.1%
Central Region		166	103.1	108.0	119	71.7%	134	80.7%
<i>Northeast Region</i>								
	8th	21	10.3	11.0	14	66.7%	18	85.7%
	13th	5	2.8	3.7	4	80.0%	9	180.0%
	17th	30	22.1	21.9	28	93.3%	30	100.0%
	19th	25	19.4	18.1	26	104.0%	26	104.0%
	20th	13	6.4	6.5	10	76.9%	12	92.3%
Northeast Region		94	60.9	61.3	76	80.9%	77	81.9%
<i>Southern Region</i>								
	3rd	2	1.0	1.6	2	100.0%	4	200.0%
	4th	51	39.9	45.1	49	96.1%	52	102.0%
	10th	13	8.0	7.3	11	84.6%	14	107.7%
	11th	8	4.2	2.9	7	87.5%	7	87.5%
	12th	4	3.5	1.8	4	100.0%	4	100.0%
	15th	2	1.8	1.5	2	100.0%	4	200.0%
	16th	3	1.9	1.1	3	100.0%	3	100.0%
Southern Region		83	60.2	61.2	71	85.5%	74	89.2%
<i>Western Region</i>								
	6th	5	1.2	1.8	2	40.0%	4	80.0%
	7th	7	3.4	3.2	5	71.4%	6	85.7%
	9th	6	2.6	2.1	3	50.0%	6	100.0%
	14th	3	0.0	0.3	0	0.0%	2	66.7%
	21st	14	14.0	12.6	17	121.4%	17	121.4%
	22nd	4	0.5	0.8	2	50.0%	4	100.0%
Western Region		39	21.7	20.9	27	69.2%	28	71.8%
<i>Missing JD or Multiple JDs</i>			3.1	2.6				
Statewide		382	249.1	254.0	280	73.3%	288	75.4%

¹ Maximum youth served is the highest number of youth in detention on a single day during the month or fiscal year.

² Regional figures are not the sum of judicial districts, but represent the maximum count on one day for the entire region.

³ State figures are not the sum of regional figures, but represent the maximum count on one day for the entire state.

February 2019 CYDC Supplemental Report

CYDC Community ADP by Judicial District

Region	JD	Committed		Diversion		ICJ		Municipal		Pre-Adjudicated		Sentenced		VCO		Total	
		February 2019	YTD	February 2019	YTD	February 2019	YTD	February 2019	YTD	February 2019	YTD	February 2019	YTD	February 2019	YTD	February 2019	YTD
<i>Central Region</i>																	
	1st	1.1	0.6	1.0	0.4	0.0	0.0	93.0	41.7	154.5	143.8	28.3	29.6	0.0	0.0	277.8	216.1
	2nd	2.5	0.5	0.0	0.0	0.0	0.0	0.0	0.0	161.8	128.0	21.6	15.1	0.0	0.0	185.9	143.5
	5th	0.0	0.0	8.0	12.6	0.0	0.0	0.0	0.0	4.0	6.9	28.4	33.1	0.0	0.0	40.4	52.7
	18th	1.2	0.9	0.0	0.0	0.3	0.1	0.0	0.0	279.8	252.9	20.2	25.6	0.0	0.0	301.5	279.5
Central Total		4.8	1.9	9.0	13.1	0.3	0.2	93.0	41.7	600.1	531.6	98.4	103.3	0.0	0.0	805.6	691.8
<i>Northeast Region</i>																	
	8th	0.0	0.0	3.0	2.9	0.0	0.0	0.0	0.0	58.3	46.6	40.9	28.9	0.0	0.0	102.2	78.4
	13th	0.0	0.0	0.0	0.0	0.0	0.0	0.0	1.1	29.3	25.4	4.9	3.2	1.0	2.5	35.2	32.2
	17th	1.0	0.6	0.0	0.0	0.0	0.0	0.0	0.0	291.5	249.6	89.6	81.7	0.0	0.0	382.1	331.8
	19th	0.4	0.3	3.0	3.1	0.0	0.1	0.0	0.0	59.3	56.8	39.9	31.5	1.0	1.0	103.5	92.9
	20th	4.0	3.1	14.0	10.8	0.0	0.0	0.0	0.0	118.4	91.9	41.0	33.1	13.0	13.3	190.4	152.2
Northeast Total		5.4	4.0	20.0	16.9	0.0	0.1	0.0	1.1	556.9	470.3	216.3	178.3	15.0	16.8	813.5	687.5
<i>Southern Region</i>																	
	3rd	0.0	0.0	0.0	0.0	0.0	0.0	0.0	0.0	8.8	7.4	9.3	7.5	0.0	0.0	18.1	14.9
	4th	2.6	1.9	0.0	0.0	0.0	0.0	17.0	23.5	186.0	139.1	41.1	37.5	0.0	0.0	246.7	202.0
	10th	1.0	1.0	0.0	0.3	1.0	1.0	2.0	2.0	25.7	23.1	7.2	7.9	1.0	0.6	37.9	35.9
	11th	1.0	1.0	0.0	0.0	0.0	0.0	5.0	7.7	43.8	28.6	19.8	18.3	0.0	0.0	69.6	55.6
	12th	0.0	0.0	1.9	1.5	0.0	0.0	5.0	3.7	13.2	12.3	1.6	0.5	0.0	0.0	21.7	17.9
	15th	0.0	0.0	1.0	1.2	0.0	0.0	0.0	0.0	2.0	2.6	11.4	6.3	0.0	0.0	14.5	10.2
	16th	0.0	0.0	0.0	0.0	0.0	0.0	0.0	0.0	4.4	6.8	3.7	2.8	13.0	14.8	21.0	24.4
Southern Total		4.6	3.9	2.9	3.1	1.0	1.0	29.0	36.9	283.9	220.0	94.2	80.6	14.0	15.4	429.5	360.9
<i>Western Region</i>																	
	6th	0.0	0.0	0.0	0.0	0.0	0.0	0.0	0.0	9.0	6.9	0.0	0.0	0.0	0.0	9.0	6.9
	7th	0.0	0.0	6.7	4.1	0.0	0.0	1.0	0.8	14.5	12.8	9.0	11.5	0.0	0.0	31.1	29.3
	9th	0.0	0.0	6.3	1.8	0.0	0.0	9.4	5.0	12.8	8.7	4.0	2.7	0.0	0.0	32.5	18.2
	14th	0.0	0.0	9.0	4.0	0.0	0.0	2.0	1.5	5.0	3.9	0.0	0.9	0.0	0.0	16.0	10.2
	21st	0.0	0.0	0.0	0.0	0.0	0.0	0.0	0.0	55.0	48.5	18.1	13.7	0.0	0.0	73.1	62.3
	22nd	0.0	0.0	0.0	0.0	0.0	0.0	0.0	0.0	9.7	8.0	14.0	10.1	0.0	0.0	23.7	18.1
Western Total		0.0	0.0	22.0	9.9	0.0	0.0	12.4	7.4	105.9	88.8	45.1	38.9	0.0	0.0	185.4	145.0
Statewide Total		14.7	9.8	53.9	42.9	1.3	1.3	134.5	87.0	1546.9	1310.8	453.9	401.1	29.0	32.2	2234.0	1885.2