

# December 2018 FY 2018-2019 CYDC JDSAG SUPPLEMENTAL REPORT

---

Prepared by the Division of Youth Services (DYS)  
Data Management & Analysis  
January 24, 2019



**COLORADO**

**Office of Children,  
Youth & Families**

Division of Youth Services

# December 2018 CYDC Supplemental Report

## DYS Commitment ADP & New Commitments by Judicial District

Region	JD <sup>1</sup>	2019 Population Estimates <sup>2</sup>	ADP <sup>3</sup>		New Commitments		
			December 2018	YTD	December 2018	YTD	YTD Rate <sup>4</sup>
<i>Central Region</i>							
	1st	55,734	79.7	87.0	4	25	4.5
	2nd	56,489	83.7	87.9	3	23	4.1
	5th	9,445	6.0	5.9	0	2	2.1
	18th	117,328	95.4	91.7	5	25	2.1
<b>Central Total</b>		<b>238,996</b>	<b>264.7</b>	<b>272.5</b>	<b>12</b>	<b>75</b>	<b>3.1</b>
<i>Northeast Region</i>							
	8th	34,282	22.6	23.4	0	2	0.6
	13th	8,510	3.9	4.6	0	0	0.0
	17th	70,426	57.7	60.1	2	15	2.1
	19th	37,897	46.4	47.9	3	10	2.6
	20th	31,849	1.1	4.9	0	0	0.0
<b>Northeast Total</b>		<b>182,964</b>	<b>131.7</b>	<b>140.9</b>	<b>5</b>	<b>27</b>	<b>1.5</b>
<i>Southern Region</i>							
	3rd	1,805	0.0	0.0	0	0	0.0
	4th	81,988	91.3	95.9	3	25	3.0
	10th	18,298	16.7	16.7	0	1	0.5
	11th	7,228	6.0	5.3	0	1	1.4
	12th	5,295	1.6	2.1	0	0	0.0
	15th	2,106	5.0	6.0	0	1	4.7
	16th	2,796	0.0	0.3	0	0	0.0
<b>Southern Total</b>		<b>119,516</b>	<b>120.5</b>	<b>126.4</b>	<b>3</b>	<b>28</b>	<b>2.3</b>
<i>Western Region</i>							
	6th	7,337	4.9	4.2	1	2	2.7
	7th	10,703	10.2	9.6	1	3	2.8
	9th	8,691	5.3	5.8	0	1	1.2
	14th	5,745	2.0	2.3	0	1	1.7
	21st	16,228	34.6	34.3	0	12	7.4
	22nd	3,215	6.7	6.3	0	1	3.1
<b>Western Total</b>		<b>51,919</b>	<b>63.7</b>	<b>62.6</b>	<b>2</b>	<b>20</b>	<b>3.9</b>
<b>Statewide Total</b>		<b>593,395</b>	<b>580.6</b>	<b>602.4</b>	<b>22</b>	<b>150</b>	<b>2.5</b>

<sup>1</sup> JD represents the judicial district in which the client was committed. Regional totals are a sum of their respective judicial districts. Regional totals reported here may differ slightly from those reported in the Monthly Population Report, where region is defined by active caseloads.

<sup>2</sup> Source: DOLA 2019 Estimates.

<sup>3</sup> Due to rounding, totals shown may not be an exact sum of the subtotals.

<sup>4</sup> Per 10,000 youth in the population.

# December 2018 CYDC Supplemental Report

## DYS Detention ADP and New Detention Admissions by Judicial District

Region	JD	2019 Population Estimates <sup>1</sup>	ADP		New Admits		
			December 2018	YTD	December 2018	YTD	YTD New Admit Rate <sup>2</sup>
<i>Central Region</i>							
	1st	55,734	18.6	23.6	33	248	44.5
	2nd	56,489	33.6	41.0	52	412	72.9
	5th	9,445	2.0	1.2	2	19	20.1
	18th	117,328	43.1	45.4	76	450	38.4
<b>Central Total</b>		<b>238,996</b>	<b>97.3</b>	<b>111.1</b>	<b>163</b>	<b>1,129</b>	<b>47.2</b>
<i>Northeast Region</i>							
	8th	34,282	13.4	12.1	23	146	42.6
	13th	8,510	4.1	4.1	7	46	54.1
	17th	70,426	22.8	22.4	52	293	41.6
	19th	37,897	22.6	17.8	43	238	62.8
	20th	31,849	7.1	6.6	9	63	19.8
<b>Northeast Total</b>		<b>182,964</b>	<b>69.9</b>	<b>63.0</b>	<b>134</b>	<b>786</b>	<b>43.0</b>
<i>Southern Region</i>							
	3rd	1,805	2.0	1.8	0	9	49.9
	4th	81,988	43.1	45.7	52	347	42.3
	10th	18,298	8.1	6.7	16	95	51.9
	11th	7,228	3.1	2.8	3	44	60.9
	12th	5,295	2.0	1.3	2	28	52.9
	15th	2,106	1.3	1.3	3	11	52.2
	16th	2,796	0.9	0.8	1	4	14.3
<b>Southern Total</b>		<b>119,516</b>	<b>60.4</b>	<b>60.4</b>	<b>77</b>	<b>538</b>	<b>45.0</b>
<i>Western Region</i>							
	6th	7,337	2.9	1.8	1	18	24.5
	7th	10,703	4.3	3.3	7	39	36.4
	9th	8,691	2.0	2.0	3	15	17.3
	14th	5,745	0.0	0.5	0	2	3.5
	21st	16,228	12.8	12.7	18	127	78.3
	22nd	3,215	1.0	0.8	2	9	28.0
<b>Western Total</b>		<b>51,919</b>	<b>22.9</b>	<b>20.9</b>	<b>31</b>	<b>210</b>	<b>40.4</b>
<i>Missing JD or Multiple JDs</i>			2.4	2.4			
<b>Statewide Total</b>		<b>593,395</b>	<b>253.0</b>	<b>257.8</b>	<b>405</b>	<b>2,663</b>	<b>44.9</b>

<sup>1</sup> Source: DOLA 2019 Estimates.

<sup>2</sup> Per 10,000 youth in the population.

# December 2018 CYDC Supplemental Report

DYS Detention LOS by Judicial District				
Region	JD	YTD Detention Releases	YTD LOS (days)	LOS (days) Compared to State AVG
<i>Central Region</i>				
	1st	247	18.2	0.2
	2nd	418	15.8	-2.2
	5th	20	10.2	-7.7
	18th	457	17.3	-0.6
<b>Central Total</b>		<b>1,142</b>	<b>16.8</b>	<b>-1.1</b>
<i>Northeast Region</i>				
	8th	151	14.2	-3.8
	13th	48	17.4	-0.5
	17th	289	14.0	-4.0
	19th	222	11.8	-6.2
	20th	59	19.2	1.2
<b>Northeast Total</b>		<b>769</b>	<b>14.0</b>	<b>-4.0</b>
<i>Southern Region</i>				
	3rd	7	2.7	-15.2
	4th	350	26.8	8.8
	10th	92	8.4	-9.6
	11th	45	8.6	-9.3
	12th	28	7.5	-10.5
	15th	12	19.4	1.5
	16th	6	26.9	9.0
<b>Southern Total</b>		<b>540</b>	<b>20.7</b>	<b>2.7</b>
<i>Western Region</i>				
	6th	14	12.4	-5.5
	7th	36	12.1	-5.9
	9th	12	12.9	-5.1
	14th	3	66.2	48.2
	21st	121	13.9	-4.1
	22nd	9	14.6	-3.4
<b>Western Total</b>		<b>195</b>	<b>14.2</b>	<b>-3.8</b>
<b>Statewide Total</b>		<b>2,652</b>	<b>18.0</b>	<b>-</b>

## December 2018 CYDC Supplemental Report

### YTD DYS Detention ADP & Ethnicity by Judicial District

Region	JD	Anglo-American		African-American		Hispanic / Latino		Native-American		Asian-American		Other		TOTAL	
		ADP	%	ADP	%	ADP	%	ADP	%	ADP	%	ADP	%	ADP	%
<b>Central</b>															
	1st	9.6	40.5%	4.3	18.1%	8.2	34.9%	0.4	1.8%	0.4	1.6%	0.7	3.1%	23.6	100%
	2nd	5.2	12.6%	14.4	35.2%	18.5	45.2%	0.3	0.9%	1.2	2.9%	1.3	3.3%	41.0	100%
	5th	0.4	35.8%	0.0	1.7%	0.7	62.6%	0.0	0.0%	0.0	0.0%	0.0	0.0%	1.2	100%
	18th	14.1	31.1%	20.4	45.0%	9.9	21.8%	0.3	0.6%	0.2	0.4%	0.5	1.2%	45.4	100%
<b>Central Total</b>		<b>29.3</b>	<b>30.0%</b>	<b>39.1</b>	<b>25.0%</b>	<b>37.4</b>	<b>41.1%</b>	<b>1.0</b>	<b>0.8%</b>	<b>1.7</b>	<b>1.2%</b>	<b>2.6</b>	<b>1.9%</b>	<b>111.1</b>	<b>100%</b>
<b>Northeast</b>															
	8th	9.4	77.9%	0.7	5.7%	1.8	15.0%	0.0	0.3%	0.0	0.0%	0.1	1.0%	12.1	100%
	13th	2.1	51.9%	0.0	0.4%	2.0	47.6%	0.0	0.1%	0.0	0.0%	0.0	0.0%	4.1	100%
	17th	8.2	36.4%	2.7	12.0%	10.5	47.0%	0.0	0.1%	0.4	1.9%	0.6	2.5%	22.4	100%
	19th	7.6	42.4%	0.9	5.0%	8.7	49.0%	0.0	0.0%	0.6	3.6%	0.0	0.0%	17.8	100%
	20th	2.7	41.2%	0.4	6.0%	3.2	47.7%	0.1	1.9%	0.0	0.0%	0.2	3.1%	6.6	100%
<b>Northeast Total</b>		<b>30.0</b>	<b>50.0%</b>	<b>4.7</b>	<b>5.8%</b>	<b>26.2</b>	<b>41.3%</b>	<b>0.2</b>	<b>0.5%</b>	<b>1.1</b>	<b>1.1%</b>	<b>0.9</b>	<b>1.3%</b>	<b>63.0</b>	<b>100%</b>
<b>Southern</b>															
	3rd	0.1	6.9%	0.0	0.0%	1.6	92.0%	0.0	0.5%	0.0	0.0%	0.0	0.7%	1.8	100%
	4th	13.9	30.5%	15.8	34.5%	16.0	34.9%	0.0	0.0%	0.0	0.0%	0.0	0.1%	45.7	100%
	10th	2.7	40.6%	0.2	2.6%	3.7	55.7%	0.0	0.7%	0.0	0.0%	0.0	0.4%	6.7	100%
	11th	1.7	62.1%	0.4	15.6%	0.6	19.7%	0.1	2.5%	0.0	0.0%	0.0	0.0%	2.8	100%
	12th	0.2	17.6%	0.1	6.8%	1.0	75.1%	0.0	0.0%	0.0	0.0%	0.0	0.6%	1.3	100%
	15th	0.7	56.0%	0.0	0.0%	0.6	44.0%	0.0	0.0%	0.0	0.0%	0.0	0.0%	1.3	100%
	16th	0.2	23.9%	0.3	34.3%	0.3	41.8%	0.0	0.0%	0.0	0.0%	0.0	0.0%	0.8	100%
<b>Southern Total</b>		<b>19.7</b>	<b>33.9%</b>	<b>16.7</b>	<b>13.4%</b>	<b>23.8</b>	<b>51.9%</b>	<b>0.1</b>	<b>0.5%</b>	<b>0.0</b>	<b>0.0%</b>	<b>0.1</b>	<b>0.2%</b>	<b>60.4</b>	<b>100%</b>
<b>Western</b>															
	6th	0.6	36.6%	0.4	23.9%	0.5	29.9%	0.2	9.7%	0.0	0.0%	0.0	0.0%	1.8	100%
	7th	2.5	76.2%	0.0	0.0%	0.8	23.8%	0.0	0.0%	0.0	0.0%	0.0	0.0%	3.3	100%
	9th	0.9	43.1%	0.0	0.0%	0.7	34.1%	0.5	22.8%	0.0	0.0%	0.0	0.0%	2.0	100%
	14th	0.5	100.0%	0.0	0.0%	0.0	0.0%	0.0	0.0%	0.0	0.0%	0.0	0.0%	0.5	100%
	21st	10.1	79.8%	0.3	2.0%	2.3	18.2%	0.0	0.0%	0.0	0.0%	0.0	0.0%	12.7	100%
	22nd	0.3	44.3%	0.0	0.0%	0.4	55.7%	0.0	0.0%	0.0	0.0%	0.0	0.0%	0.8	100%
<b>Western Total</b>		<b>14.9</b>	<b>63.3%</b>	<b>0.7</b>	<b>4.3%</b>	<b>4.7</b>	<b>26.9%</b>	<b>0.6</b>	<b>5.4%</b>	<b>0.0</b>	<b>0.0%</b>	<b>0.0</b>	<b>0.0%</b>	<b>20.9</b>	<b>100%</b>
Missing JD Data		0.5		0.4		1.4		0.0		0.0		0.0		2.4	
<b>Statewide Total</b>		<b>94.4</b>	<b>36.6%</b>	<b>61.6</b>	<b>23.9%</b>	<b>93.4</b>	<b>36.2%</b>	<b>2.0</b>	<b>0.8%</b>	<b>2.8</b>	<b>1.1%</b>	<b>3.6</b>	<b>1.4%</b>	<b>257.8</b>	<b>100%</b>

## December 2018 CDYC Supplemental Report

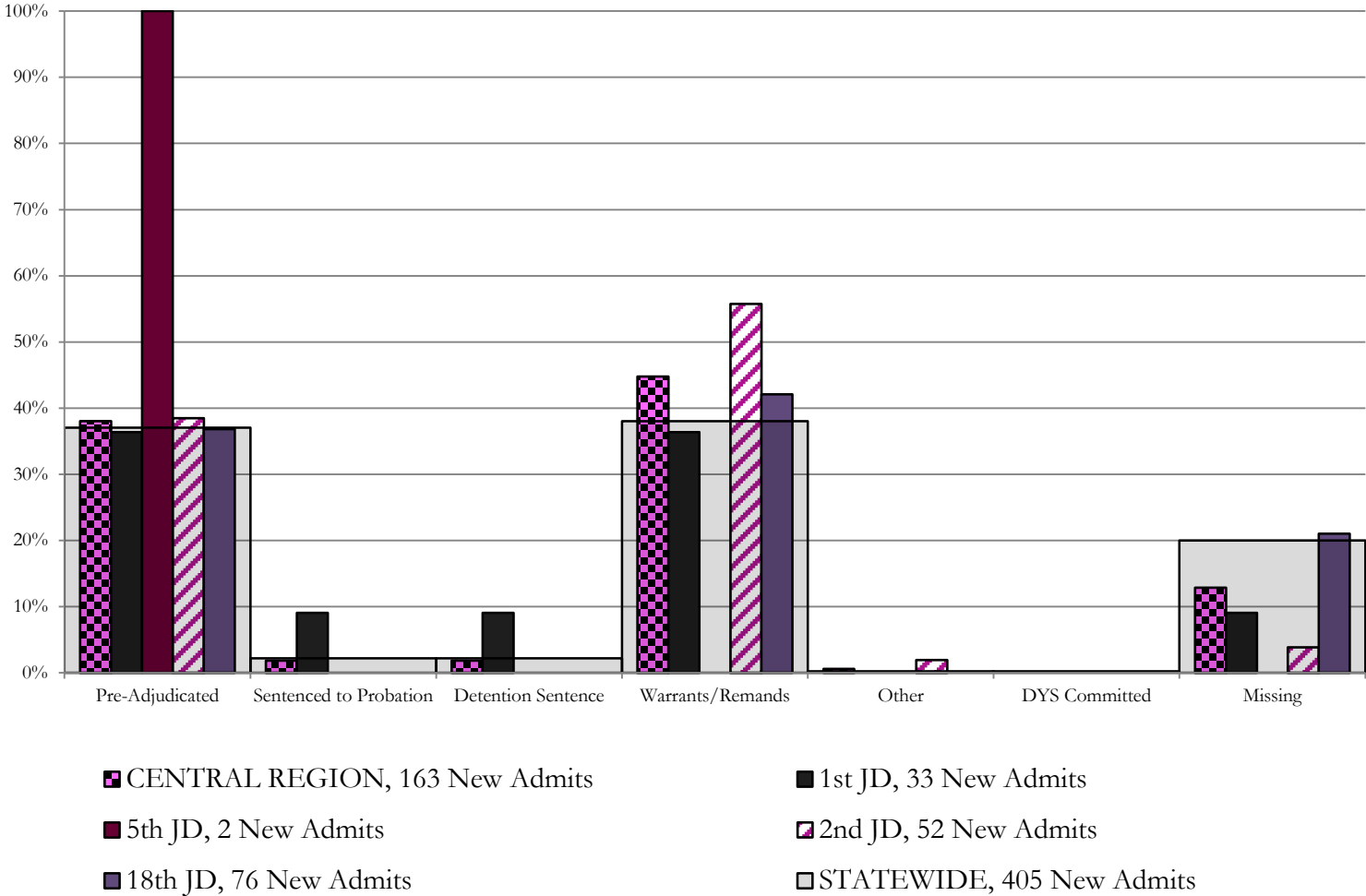
### CYDC Reason Detained (RD) by Judicial District

Region	JD	Monthly New Admits	Pre-Adjudicated				Sentenced to Probation				Detention Sentence								Warrants/Remands				Other				DYS Committed		Missing									
			Felony		Misdemeanor		Technical Violator		New Charges		Probation Sentence		Detention Sentence		Valid Court Order (VCO) Truancy		Awaiting DSS (Social Services) Placement		Failure to Appear (FTA)		Failure to Comply (FTC)		Interstate Compact on Juveniles (ICJ) Hold		Immigration Hold		No Bond Hold		Out-of-Country Warrant		Institutional		Parole		Missing			
			#	%	#	%	#	%	#	%	#	%	#	%	#	%	#	%	#	%	#	%	#	%	#	%	#	%	#	%	#	%	#	%	#	%		
<i>Central Region</i>																																						
	1st	33	7	21.2%	5	15.2%	3	9.1%	0	0.0%	0	0.0%	3	9.1%	0	0.0%	0	0.0%	0	0.0%	2	6.1%	10	30.3%	0	0.0%	0	0.0%	0	0.0%	0	0.0%	0	0.0%	0	0.0%	3	9.1%
	2nd	52	19	36.5%	1	1.9%	0	0.0%	0	0.0%	0	0.0%	0	0.0%	0	0.0%	0	0.0%	7	13.5%	22	42.3%	1	1.9%	0	0.0%	0	0.0%	0	0.0%	0	0.0%	0	0.0%	0	0.0%	2	3.8%
	5th	2	1	50.0%	1	50.0%	0	0.0%	0	0.0%	0	0.0%	0	0.0%	0	0.0%	0	0.0%	0	0.0%	0	0.0%	0	0.0%	0	0.0%	0	0.0%	0	0.0%	0	0.0%	0	0.0%	0	0.0%	0	0.0%
	18th	76	17	22.4%	11	14.5%	0	0.0%	0	0.0%	0	0.0%	0	0.0%	0	0.0%	0	0.0%	13	17.1%	19	25.0%	0	0.0%	0	0.0%	0	0.0%	0	0.0%	0	0.0%	0	0.0%	0	0.0%	16	21.1%
<b>Central Total</b>		<b>163</b>	<b>44</b>	<b>27%</b>	<b>18</b>	<b>11%</b>	<b>3</b>	<b>1.8%</b>	<b>0</b>	<b>0.0%</b>	<b>0</b>	<b>0.0%</b>	<b>3</b>	<b>1.8%</b>	<b>0</b>	<b>0.0%</b>	<b>0</b>	<b>0.0%</b>	<b>22</b>	<b>13%</b>	<b>51</b>	<b>31%</b>	<b>1</b>	<b>0.6%</b>	<b>0</b>	<b>0.0%</b>	<b>0</b>	<b>0.0%</b>	<b>0</b>	<b>0.0%</b>	<b>0</b>	<b>0.0%</b>	<b>0</b>	<b>0.0%</b>	<b>21</b>	<b>12.9%</b>		
<i>Northeast Region</i>																																						
	8th	23	2	8.7%	1	4.3%	0	0.0%	0	0.0%	0	0.0%	1	4.3%	0	0.0%	0	0.0%	3	13.0%	4	17.4%	0	0.0%	0	0.0%	0	0.0%	0	0.0%	0	0.0%	0	0.0%	0	0.0%	12	52.2%
	13th	7	1	14.3%	1	14.3%	0	0.0%	0	0.0%	0	0.0%	0	0.0%	0	0.0%	0	0.0%	0	0.0%	0	0.0%	0	0.0%	0	0.0%	0	0.0%	0	0.0%	0	0.0%	0	0.0%	5	71.4%		
	17th	52	10	19.2%	3	5.8%	0	0.0%	0	0.0%	0	0.0%	0	0.0%	0	0.0%	0	0.0%	3	5.8%	12	23.1%	0	0.0%	0	0.0%	0	0.0%	0	0.0%	0	0.0%	0	0.0%	24	46.2%		
	19th	43	16	37.2%	5	11.6%	5	11.6%	0	0.0%	0	0.0%	1	2.3%	0	0.0%	0	0.0%	4	9.3%	12	27.9%	0	0.0%	0	0.0%	0	0.0%	0	0.0%	0	0.0%	0	0.0%	0	0.0%	0	0.0%
	20th	9	0	0.0%	0	0.0%	0	0.0%	0	0.0%	0	0.0%	0	0.0%	0	0.0%	0	0.0%	0	0.0%	0	0.0%	0	0.0%	0	0.0%	0	0.0%	0	0.0%	0	0.0%	0	0.0%	9	100.0%		
<b>Northeast Total</b>		<b>134</b>	<b>29</b>	<b>22%</b>	<b>10</b>	<b>7%</b>	<b>5</b>	<b>3.7%</b>	<b>0</b>	<b>0.0%</b>	<b>0</b>	<b>0.0%</b>	<b>2</b>	<b>1.5%</b>	<b>0</b>	<b>0.0%</b>	<b>0</b>	<b>0.0%</b>	<b>10</b>	<b>7.5%</b>	<b>28</b>	<b>21%</b>	<b>0</b>	<b>0.0%</b>	<b>0</b>	<b>0.0%</b>	<b>0</b>	<b>0.0%</b>	<b>0</b>	<b>0.0%</b>	<b>0</b>	<b>0.0%</b>	<b>0</b>	<b>0.0%</b>	<b>50</b>	<b>37%</b>		
<i>Southern Region</i>																																						
	3rd	0	0	0.0%	0	0.0%	0	0.0%	0	0.0%	0	0.0%	0	0.0%	0	0.0%	0	0.0%	0	0.0%	0	0.0%	0	0.0%	0	0.0%	0	0.0%	0	0.0%	0	0.0%	0	0.0%	0	0.0%	0	0.0%
	4th	52	22	42.3%	5	9.6%	0	0.0%	0	0.0%	0	0.0%	1	1.9%	0	0.0%	0	0.0%	6	11.5%	14	26.9%	0	0.0%	0	0.0%	0	0.0%	1	1.9%	0	0.0%	3	5.8%	0	0.0%	0	0.0%
	10th	16	4	25.0%	4	25.0%	0	0.0%	0	0.0%	0	0.0%	2	12.5%	0	0.0%	0	0.0%	2	12.5%	3	18.8%	0	0.0%	0	0.0%	0	0.0%	0	0.0%	0	0.0%	0	0.0%	1	6.3%	0	0.0%
	11th	3	2	66.7%	0	0.0%	0	0.0%	0	0.0%	0	0.0%	0	0.0%	0	0.0%	0	0.0%	0	0.0%	0	0.0%	0	0.0%	0	0.0%	0	0.0%	0	0.0%	0	0.0%	1	33.3%	0	0.0%		
	12th	2	1	50.0%	0	0.0%	0	0.0%	0	0.0%	0	0.0%	0	0.0%	0	0.0%	0	0.0%	0	0.0%	1	50.0%	0	0.0%	0	0.0%	0	0.0%	0	0.0%	0	0.0%	0	0.0%	0	0.0%		
	15th	3	0	0.0%	0	0.0%	0	0.0%	0	0.0%	0	0.0%	0	0.0%	0	0.0%	0	0.0%	2	66.7%	1	33.3%	0	0.0%	0	0.0%	0	0.0%	0	0.0%	0	0.0%	0	0.0%	0	0.0%	0	0.0%
	16th	1	0	0.0%	0	0.0%	0	0.0%	0	0.0%	0	0.0%	1	100.0%	0	0.0%	0	0.0%	0	0.0%	0	0.0%	0	0.0%	0	0.0%	0	0.0%	0	0.0%	0	0.0%	0	0.0%	0	0.0%	0	0.0%
<b>Southern Total</b>		<b>77</b>	<b>29</b>	<b>38%</b>	<b>9</b>	<b>12%</b>	<b>0</b>	<b>0.0%</b>	<b>0</b>	<b>0.0%</b>	<b>0</b>	<b>0.0%</b>	<b>4</b>	<b>5.2%</b>	<b>0</b>	<b>0.0%</b>	<b>0</b>	<b>0.0%</b>	<b>10</b>	<b>13%</b>	<b>19</b>	<b>25%</b>	<b>0</b>	<b>0.0%</b>	<b>0</b>	<b>0.0%</b>	<b>0</b>	<b>0.0%</b>	<b>0</b>	<b>0.0%</b>	<b>1</b>	<b>1.3%</b>	<b>0</b>	<b>0.0%</b>	<b>5</b>	<b>6%</b>		
<i>Western Region</i>																																						
	6th	1	0	0.0%	1	100.0%	0	0.0%	0	0.0%	0	0.0%	0	0.0%	0	0.0%	0	0.0%	0	0.0%	0	0.0%	0	0.0%	0	0.0%	0	0.0%	0	0.0%	0	0.0%	0	0.0%	0	0.0%	0	0%
	7th	7	3	42.9%	2	28.6%	0	0.0%	0	0.0%	0	0.0%	0	0.0%	0	0.0%	0	0.0%	0	0.0%	0	0.0%	0	0.0%	0	0.0%	0	0.0%	0	0.0%	0	0.0%	0	0.0%	2	29%	0	0%
	9th	3	1	33.3%	0	0.0%	0	0.0%	0	0.0%	0	0.0%	0	0.0%	0	0.0%	0	0.0%	0	0.0%	0	0.0%	0	0.0%	0	0.0%	0	0.0%	0	0.0%	0	0.0%	0	0.0%	2	67%	0	0%
	14th	0	0	0.0%	0	0.0%	0	0.0%	0	0.0%	0	0.0%	0	0.0%	0	0.0%	0	0.0%	0	0.0%	0	0.0%	0	0.0%	0	0.0%	0	0.0%	0	0.0%	0	0.0%	0	0.0%	0	0.0%	0	0%
	21st	18	3	16.7%	1	5.6%	0	0.0%	0	0.0%	0	0.0%	0	0.0%	0	0.0%	0	0.0%	0	0.0%	14	77.8%	0	0.0%	0	0.0%	0	0.0%	0	0.0%	0	0.0%	0	0.0%	0	0.0%	0	0%
	22nd	2	0	0.0%	0	0.0%	1	50.0%	0	0.0%	0	0.0%	0	0.0%	0	0.0%	0	0.0%	0	0.0%	0	0.0%	0	0.0%	0	0.0%	0	0.0%	0	0.0%	0	0.0%	1	50%	0	0%		
<b>Western Total</b>		<b>31</b>	<b>7</b>	<b>23%</b>	<b>4</b>	<b>12.9%</b>	<b>1</b>	<b>3.2%</b>	<b>0</b>	<b>0.0%</b>	<b>0</b>	<b>0.0%</b>	<b>0</b>	<b>0.0%</b>	<b>0</b>	<b>0.0%</b>	<b>0</b>	<b>0.0%</b>	<b>14</b>	<b>45%</b>	<b>0</b>	<b>0.0%</b>	<b>0</b>	<b>0.0%</b>	<b>0</b>	<b>0.0%</b>	<b>0</b>	<b>0.0%</b>	<b>0</b>	<b>0.0%</b>	<b>0</b>	<b>0.0%</b>	<b>0</b>	<b>0.0%</b>	<b>5</b>	<b>16%</b>		
<b>Individual RD Totals</b>		<b>405</b>	<b>109</b>	<b>27%</b>	<b>41</b>	<b>10%</b>	<b>9</b>	<b>2.2%</b>	<b>0</b>	<b>0.0%</b>	<b>0</b>	<b>0.0%</b>	<b>9</b>	<b>2.2%</b>	<b>0</b>	<b>0.0%</b>	<b>0</b>	<b>0.0%</b>	<b>42</b>	<b>10%</b>	<b>112</b>	<b>28%</b>	<b>1</b>	<b>0.2%</b>	<b>0</b>	<b>0.0%</b>	<b>0</b>	<b>0.0%</b>	<b>0</b>	<b>0.0%</b>	<b>0</b>	<b>0.0%</b>	<b>1</b>	<b>0.2%</b>	<b>0</b>	<b>0.0%</b>	<b>81</b>	<b>20%</b>
<b>Statewide Totals</b>		<b>405</b>	<b>150</b>	<b>37.0%</b>	<b>9</b>	<b>2.2%</b>	<b>9</b>	<b>2.2%</b>	<b>0</b>	<b>0.0%</b>	<b>9</b>	<b>2.2%</b>	<b>0</b>	<b>0.0%</b>	<b>0</b>	<b>0.0%</b>	<b>154</b>	<b>38.0%</b>	<b>1</b>	<b>0.2%</b>	<b>0</b>	<b>0.0%</b>	<b>0</b>	<b>0.0%</b>	<b>0</b>	<b>0.0%</b>	<b>1</b>	<b>0.2%</b>	<b>0</b>	<b>0.0%</b>	<b>81</b>	<b>20%</b>	<b>81</b>	<b>20%</b>				

# Central Region

## CYDC Reason Detained by Judicial District

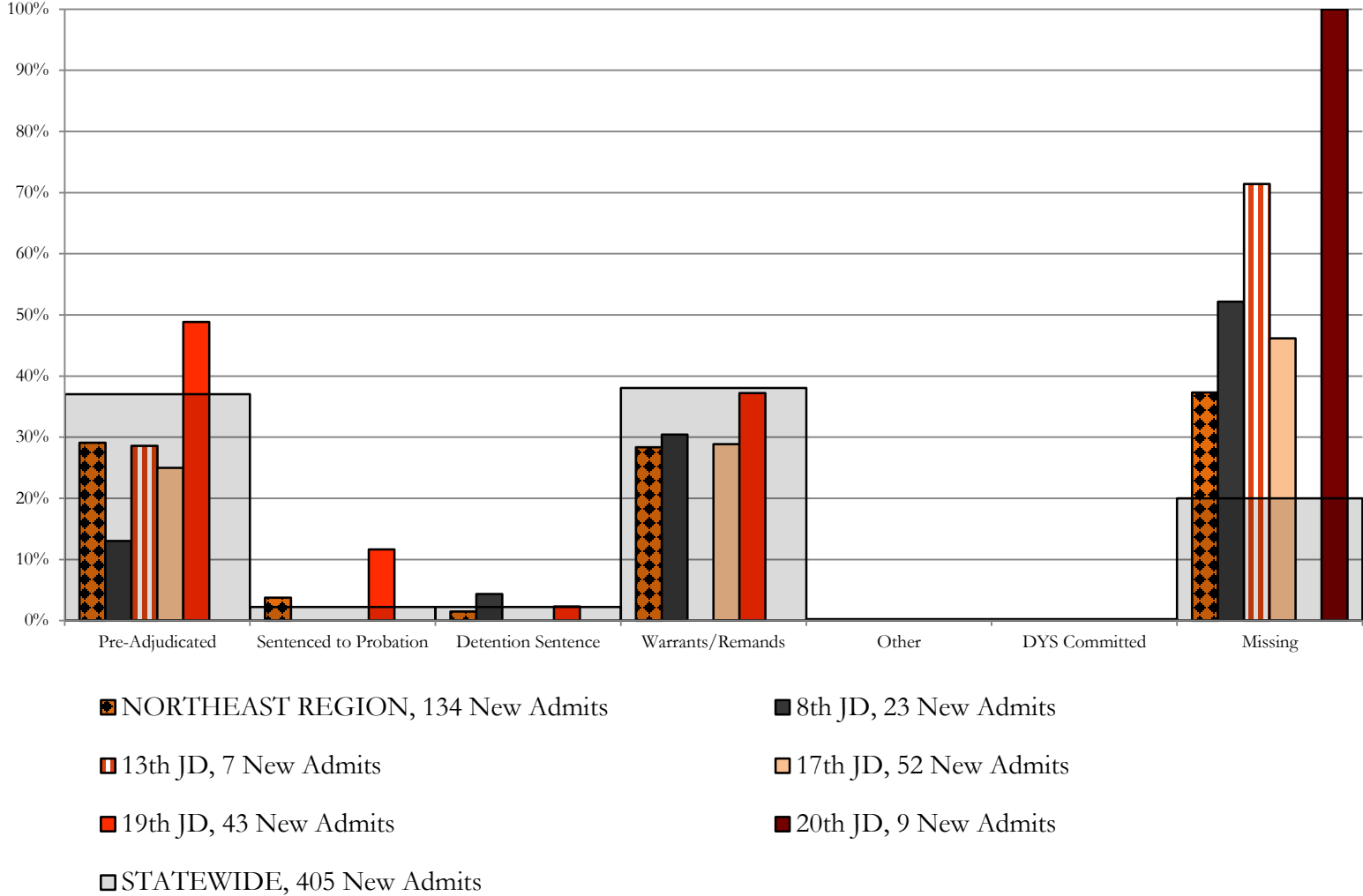
### December 2018 New Admits



# Northeast Region

## CYDC Reason Detained by Judicial District

### December 2018 New Admits

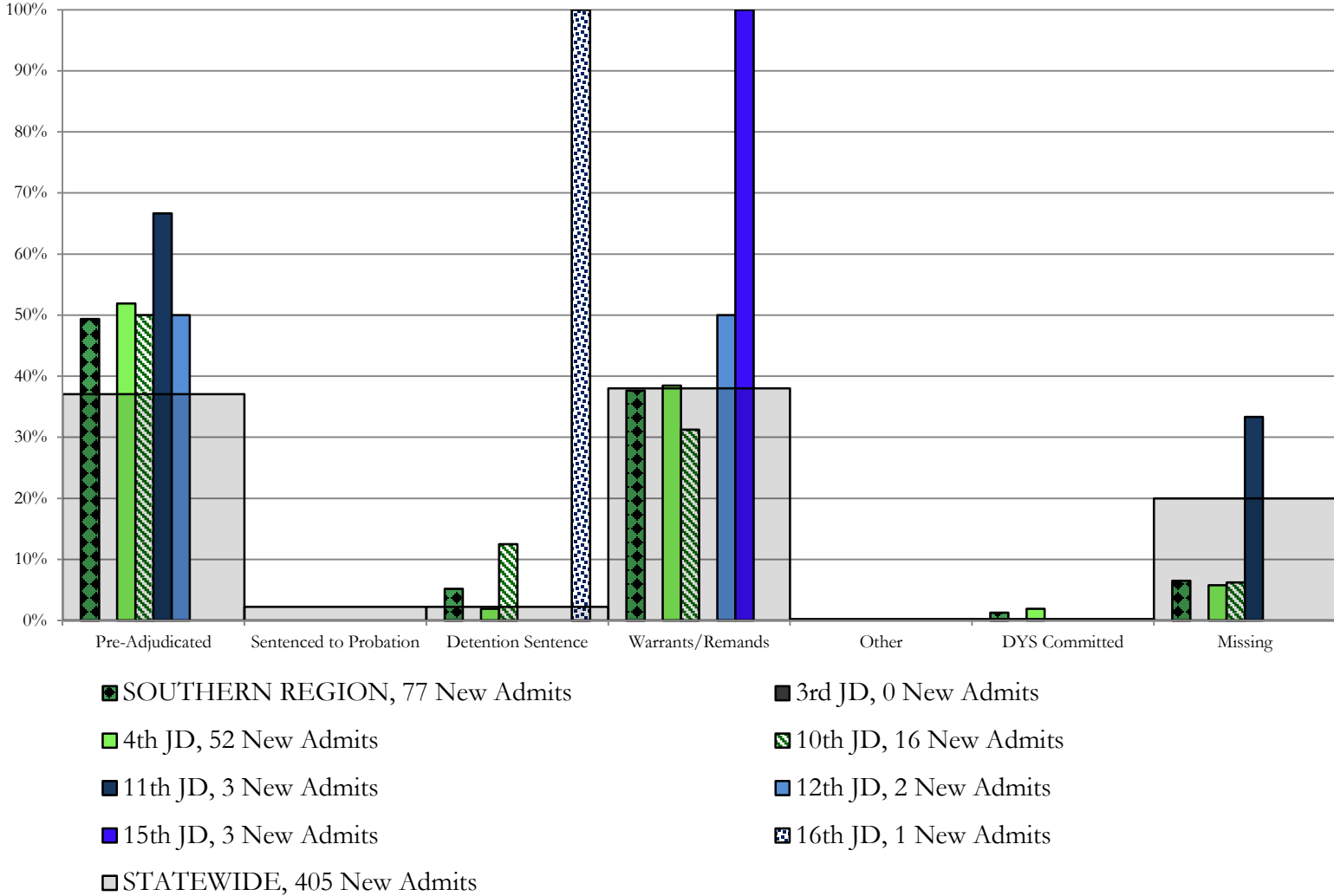




# Southern Region

## CYDC Reason Detained by Judicial District

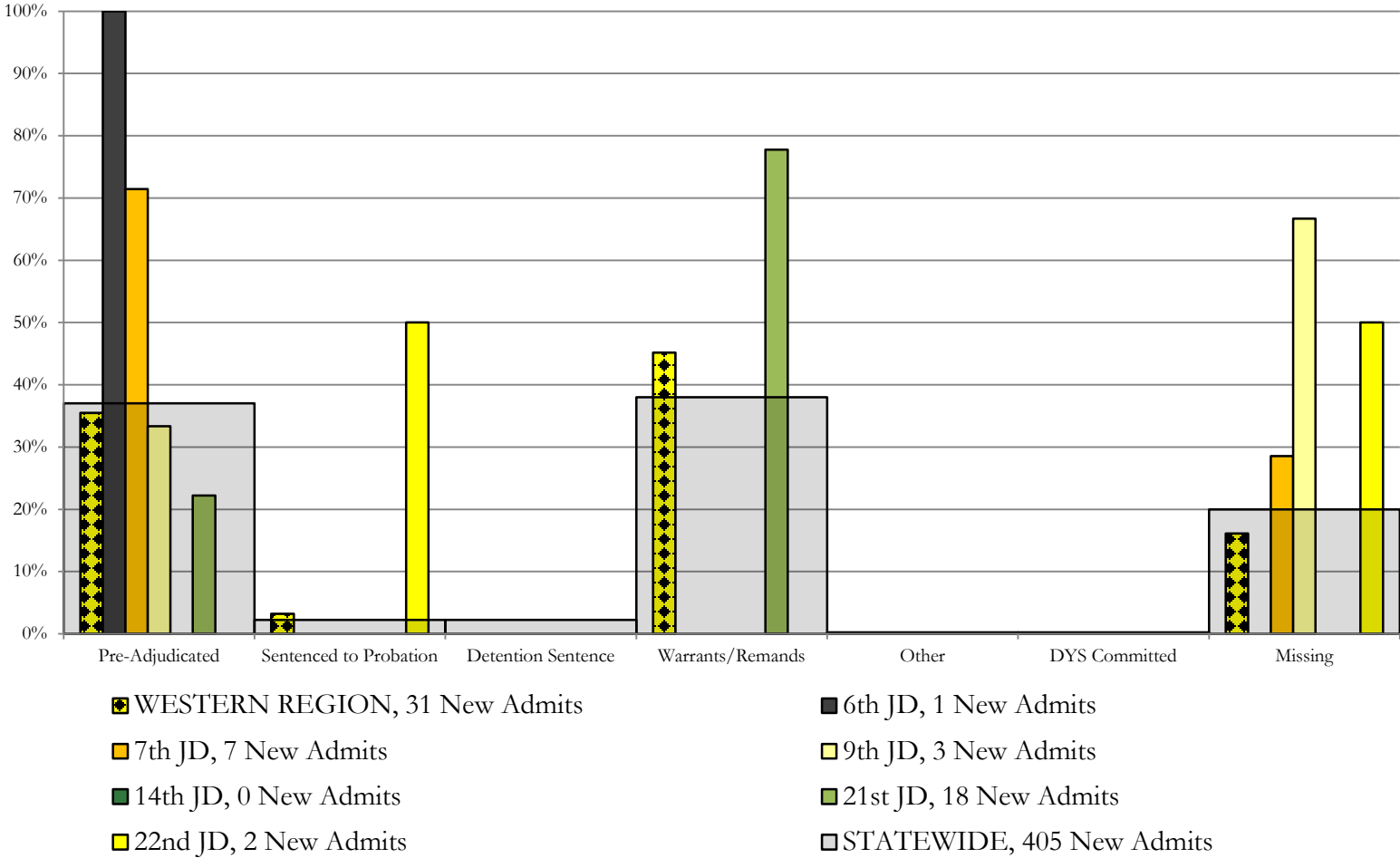
### December 2018 New Admits



# Western Region

## CYDC Reason Detained by Judicial District

### December 2018 New Admits



## December 2018 CYDC Supplemental Report

CYDC Reason Detained (RD) by Judicial District Year to Date

Region	JD	Pre-Adjudicated		Sentenced to Probation				Detention Sentence								Warrants/Remands				Other				DYS Committed				Missing			
		Felony		Misdemeanor		Technical Violator		New Charges		Probation Sentence		Detention Sentence		Valid Court Order (VCO) Truancy		Awaiting DSS (Social Services) Placement		Failure to Appear (FTA)		Failure to Comply (FTC)		Interstate Compact on Juveniles (ICJ) Hold		Immigration Hold		Institutional		Parole		Missing	
		#	%	#	%	#	%	#	%	#	%	#	%	#	%	#	%	#	%	#	%	#	%	#	%	#	%	#	%	#	%
<b>Central Region</b>																															
1st	248	72	29.0%	23	9.3%	44	17.7%	1	0.4%	0	0.0%	18	7.3%	0	0.0%	0	0.0%	14	5.6%	57	23.0%	0	0.0%	0	0.0%	0	0.0%	0	0.0%	19	7.7%
2nd	412	187	45.4%	33	8.0%	1	0.2%	0	0.0%	0	0.0%	0	0.0%	0	0.0%	0	0.0%	40	9.7%	122	29.6%	6	1.5%	0	0.0%	2	0.5%	0	0.0%	21	5.1%
5th	19	9	47.4%	4	21.1%	1	5.3%	0	0.0%	0	0.0%	2	10.5%	0	0.0%	0	0.0%	0	0.0%	3	15.8%	0	0.0%	0	0.0%	0	0.0%	0	0.0%	0	0.0%
18th	450	110	24.4%	76	16.9%	0	0.0%	0	0.0%	0	0.0%	6	1.3%	0	0.0%	0	0.0%	40	8.9%	139	30.9%	5	1.1%	0	0.0%	5	1.1%	1	0.2%	68	15.1%
<b>Central Total</b>	<b>1,129</b>	<b>378</b>	<b>33.5%</b>	<b>136</b>	<b>12.0%</b>	<b>46</b>	<b>4.1%</b>	<b>1</b>	<b>0.1%</b>	<b>0</b>	<b>0.0%</b>	<b>26</b>	<b>2.3%</b>	<b>0</b>	<b>0.0%</b>	<b>0</b>	<b>0.0%</b>	<b>94</b>	<b>8.3%</b>	<b>321</b>	<b>28.4%</b>	<b>11</b>	<b>1.0%</b>	<b>0</b>	<b>0.0%</b>	<b>7</b>	<b>0.6%</b>	<b>1</b>	<b>0.1%</b>	<b>108</b>	<b>9.6%</b>
<b>Northeast Region</b>																															
8th	146	33	22.6%	17	11.6%	0	0.0%	0	0.0%	0	0.0%	6	4.1%	0	0.0%	0	0.0%	13	8.9%	56	38.4%	0	0.0%	0	0.0%	0	0.0%	1	0.7%	20	13.7%
13th	46	22	47.8%	9	19.6%	0	0.0%	0	0.0%	0	0.0%	0	0.0%	0	0.0%	0	0.0%	0	0.0%	10	21.7%	0	0.0%	0	0.0%	0	0.0%	0	0.0%	5	10.9%
17th	293	75	25.6%	14	4.8%	2	0.7%	0	0.0%	0	0.0%	3	1.0%	0	0.0%	0	0.0%	22	7.5%	95	32.4%	0	0.0%	0	0.0%	0	0.0%	0	0.0%	82	28.0%
19th	238	73	30.7%	43	18.1%	52	21.8%	1	0.4%	0	0.0%	1	0.4%	0	0.0%	1	0.4%	11	4.6%	53	22.3%	0	0.0%	0	0.0%	0	0.0%	0	0.0%	3	1.3%
20th	63	9	14.3%	5	7.9%	5	7.9%	0	0.0%	0	0.0%	5	7.9%	0	0.0%	3	4.8%	1	1.6%	9	14.3%	0	0.0%	0	0.0%	0	0.0%	0	0.0%	26	41.3%
<b>Northeast Total</b>	<b>786</b>	<b>212</b>	<b>27.0%</b>	<b>88</b>	<b>11.2%</b>	<b>59</b>	<b>7.5%</b>	<b>1</b>	<b>0.1%</b>	<b>0</b>	<b>0.0%</b>	<b>15</b>	<b>1.9%</b>	<b>0</b>	<b>0.0%</b>	<b>4</b>	<b>0.5%</b>	<b>47</b>	<b>6.0%</b>	<b>223</b>	<b>28.4%</b>	<b>0</b>	<b>0.0%</b>	<b>0</b>	<b>0.0%</b>	<b>0</b>	<b>0.0%</b>	<b>1</b>	<b>0.1%</b>	<b>136</b>	<b>17.3%</b>
<b>Southern Region</b>																															
3rd	9	5	55.6%	1	11.1%	1	11.1%	0	0.0%	0	0.0%	0	0.0%	0	0.0%	0	0.0%	0	0.0%	1	11.1%	0	0.0%	0	0.0%	0	0.0%	0	0.0%	1	11.1%
4th	347	149	42.9%	38	11.0%	0	0.0%	8	2.3%	0	0.0%	5	1.4%	0	0.0%	1	0.3%	35	10.1%	83	23.9%	0	0.0%	0	0.0%	9	2.6%	1	0.3%	18	5.2%
10th	95	31	32.6%	13	13.7%	0	0.0%	0	0.0%	0	0.0%	5	5.3%	0	0.0%	0	0.0%	11	11.6%	32	33.7%	0	0.0%	0	0.0%	0	0.0%	0	0.0%	3	3.2%
11th	44	23	52.3%	3	6.8%	1	2.3%	0	0.0%	0	0.0%	2	4.5%	0	0.0%	0	0.0%	5	11.4%	5	11.4%	0	0.0%	0	0.0%	0	0.0%	0	0.0%	5	11.4%
12th	28	13	46.4%	4	14.3%	0	0.0%	0	0.0%	0	0.0%	1	3.6%	0	0.0%	0	0.0%	5	17.9%	3	10.7%	0	0.0%	0	0.0%	0	0.0%	0	0.0%	2	7.1%
15th	11	0	0.0%	0	0.0%	0	0.0%	0	0.0%	0	0.0%	1	9.1%	0	0.0%	0	0.0%	5	45.5%	4	36.4%	0	0.0%	0	0.0%	0	0.0%	0	0.0%	1	9.1%
16th	4	1	25.0%	1	25.0%	0	0.0%	0	0.0%	0	0.0%	2	50.0%	0	0.0%	0	0.0%	0	0.0%	0	0.0%	0	0.0%	0	0.0%	0	0.0%	0	0.0%	0	0.0%
<b>Southern Total</b>	<b>538</b>	<b>222</b>	<b>41.3%</b>	<b>60</b>	<b>11.2%</b>	<b>2</b>	<b>0.4%</b>	<b>8</b>	<b>1.5%</b>	<b>0</b>	<b>0.0%</b>	<b>16</b>	<b>3.0%</b>	<b>0</b>	<b>0.0%</b>	<b>1</b>	<b>0.2%</b>	<b>61</b>	<b>11.3%</b>	<b>128</b>	<b>23.8%</b>	<b>0</b>	<b>0.0%</b>	<b>0</b>	<b>0.0%</b>	<b>9</b>	<b>1.7%</b>	<b>1</b>	<b>0.2%</b>	<b>30</b>	<b>5.6%</b>
<b>Western Region</b>																															
6th	18	5	27.8%	1	5.6%	2	11.1%	0	0.0%	0	0.0%	0	0.0%	0	0.0%	0	0.0%	0	0.0%	1	5.6%	0	0.0%	0	0.0%	0	0.0%	0	0.0%	9	50.0%
7th	39	16	41.0%	9	23.1%	0	0.0%	0	0.0%	0	0.0%	1	2.6%	0	0.0%	0	0.0%	0	0.0%	4	10.3%	0	0.0%	0	0.0%	0	0.0%	0	0.0%	9	23.1%
9th	15	3	20.0%	3	20.0%	2	13.3%	0	0.0%	0	0.0%	0	0.0%	0	0.0%	0	0.0%	0	0.0%	4	26.7%	0	0.0%	0	0.0%	0	0.0%	0	0.0%	3	20.0%
14th	2	0	0.0%	1	50.0%	0	0.0%	1	50.0%	0	0.0%	0	0.0%	0	0.0%	0	0.0%	0	0.0%	0	0.0%	0	0.0%	0	0.0%	0	0.0%	0	0.0%	0	0.0%
21st	127	24	18.9%	19	15.0%	0	0.0%	0	0.0%	0	0.0%	3	2.4%	0	0.0%	0	0.0%	12	9.4%	61	48.0%	0	0.0%	0	0.0%	0	0.0%	0	0.0%	8	6.3%
22nd	9	0	0.0%	1	11.1%	1	11.1%	0	0.0%	0	0.0%	0	0.0%	0	0.0%	0	0.0%	0	0.0%	0	0.0%	0	0.0%	0	0.0%	0	0.0%	0	0.0%	7	77.8%
<b>Western Total</b>	<b>210</b>	<b>48</b>	<b>22.9%</b>	<b>34</b>	<b>16.2%</b>	<b>5</b>	<b>2.4%</b>	<b>1</b>	<b>0.5%</b>	<b>0</b>	<b>0.0%</b>	<b>4</b>	<b>1.9%</b>	<b>0</b>	<b>0.0%</b>	<b>0</b>	<b>0.0%</b>	<b>12</b>	<b>5.7%</b>	<b>70</b>	<b>33.3%</b>	<b>0</b>	<b>0.0%</b>	<b>0</b>	<b>0.0%</b>	<b>0</b>	<b>0.0%</b>	<b>0</b>	<b>0.0%</b>	<b>36</b>	<b>17.1%</b>
<b>Individual RD Totals</b>	<b>2,663</b>	<b>860</b>	<b>32.3%</b>	<b>318</b>	<b>11.9%</b>	<b>112</b>	<b>4.2%</b>	<b>11</b>	<b>0.4%</b>	<b>0</b>	<b>0.0%</b>	<b>61</b>	<b>2.3%</b>	<b>0</b>	<b>0.0%</b>	<b>5</b>	<b>0.2%</b>	<b>214</b>	<b>8.0%</b>	<b>742</b>	<b>27.9%</b>	<b>11</b>	<b>0.4%</b>	<b>0</b>	<b>0.0%</b>	<b>16</b>	<b>0.6%</b>	<b>3</b>	<b>0.1%</b>	<b>310</b>	<b>11.6%</b>
<b>Statewide Totals</b>	<b>2,663</b>	<b>1,178</b>	<b>44.2%</b>	<b>123</b>	<b>4.6%</b>	<b>66</b>	<b>2.5%</b>	<b>11</b>	<b>0.4%</b>	<b>0</b>	<b>0.0%</b>	<b>66</b>	<b>2.5%</b>	<b>0</b>	<b>0.0%</b>	<b>5</b>	<b>0.2%</b>	<b>956</b>	<b>35.9%</b>	<b>742</b>	<b>27.9%</b>	<b>11</b>	<b>0.4%</b>	<b>0</b>	<b>0.0%</b>	<b>16</b>	<b>0.6%</b>	<b>3</b>	<b>0.1%</b>	<b>310</b>	<b>11.6%</b>

# December 2018 CYDC Supplemental Report

## DYS Detention Maximum Youth Served by Judicial District<sup>1</sup>

Region	JD	Detention Capacity	Detention ADP		Maximum Youth Served on a Single Day <sup>2,3</sup>			
			December 2018	YTD	December 2018		YTD	
					Number of Youth	% of Detention Capacity	Number of Youth	% of Detention Capacity
<i>Central Region</i>								
	1st	37	18.6	23.6	22	59.5%	34	91.9%
	2nd	64	33.6	41.0	41	64.1%	59	92.2%
	5th	4	2.0	1.2	4	100.0%	4	100.0%
	18th	61	43.1	45.4	53	86.9%	58	95.1%
<b>Central Region</b>		<b>166</b>	<b>97.3</b>	<b>111.1</b>	<b>112</b>	<b>67.5%</b>	<b>134</b>	<b>80.7%</b>
<i>Northeast Region</i>								
	8th	21	13.4	12.1	18	85.7%	19	90.5%
	13th	5	4.1	4.1	6	120.0%	9	180.0%
	17th	30	22.8	22.4	30	100.0%	30	100.0%
	19th	25	22.6	17.8	27	108.0%	27	108.0%
	20th	13	7.1	6.6	9	69.2%	12	92.3%
<b>Northeast Region</b>		<b>94</b>	<b>69.9</b>	<b>63.0</b>	<b>79</b>	<b>84.0%</b>	<b>79</b>	<b>84.0%</b>
<i>Southern Region</i>								
	3rd	2	2.0	1.8	2	100.0%	4	200.0%
	4th	51	43.1	45.7	50	98.0%	52	102.0%
	10th	13	8.1	6.7	11	84.6%	11	84.6%
	11th	8	3.1	2.8	4	50.0%	6	75.0%
	12th	4	2.0	1.3	3	75.0%	3	75.0%
	15th	2	1.3	1.3	3	150.0%	4	200.0%
	16th	3	0.9	0.8	1	33.3%	3	100.0%
<b>Southern Region</b>		<b>83</b>	<b>60.4</b>	<b>60.4</b>	<b>66</b>	<b>79.5%</b>	<b>71</b>	<b>85.5%</b>
<i>Western Region</i>								
	6th	5	2.9	1.8	3	60.0%	4	80.0%
	7th	7	4.3	3.3	6	85.7%	6	85.7%
	9th	6	2.0	2.0	4	66.7%	6	100.0%
	14th	3	0.0	0.5	0	0.0%	2	66.7%
	21st	14	12.8	12.7	15	107.1%	17	121.4%
	22nd	4	1.0	0.8	2	50.0%	4	100.0%
<b>Western Region</b>		<b>39</b>	<b>22.9</b>	<b>20.9</b>	<b>28</b>	<b>71.8%</b>	<b>28</b>	<b>71.8%</b>
<i>Missing JD or Multiple JDs</i>			2.4	2.4				
<b>Statewide</b>		<b>382</b>	<b>253.0</b>	<b>257.8</b>	<b>270</b>	<b>70.7%</b>	<b>289</b>	<b>75.7%</b>

<sup>1</sup> Maximum youth served is the highest number of youth in detention on a single day during the month or fiscal year.

<sup>2</sup> Regional figures are not the sum of judicial districts, but represent the maximum count on one day for the entire region.

<sup>3</sup> State figures are not the sum of regional figures, but represent the maximum count on one day for the entire state.

## December 2018 CYDC Supplemental Report

### CYDC Community ADP by Judicial District

Region	JD	Committed		Diversion		ICJ		Municipal		Pre-Adjudicated		Sentenced		VCO		Total	
		December 2018	YTD	December 2018	YTD	December 2018	YTD	December 2018	YTD	December 2018	YTD	December 2018	YTD	December 2018	YTD	December 2018	YTD
<i>Central Region</i>																	
	1st	1.0	0.4	0.1	0.4	0.0	0.0	58.4	29.3	156.7	142.7	27.7	30.4	0.0	0.0	243.9	203.2
	2nd	0.0	0.0	0.0	0.0	1.1	0.6	0.0	0.0	155.4	132.2	17.6	16.2	0.0	0.0	174.0	149.0
	5th	0.0	0.0	20.0	22.3	0.0	0.0	0.0	0.0	11.0	7.7	32.0	32.9	0.0	0.0	63.0	62.8
	18th	1.0	0.6	0.0	0.0	0.0	0.0	0.0	0.0	260.0	246.8	25.4	26.5	0.0	0.0	286.4	274.0
<b>Central Total</b>		<b>2.0</b>	<b>1.1</b>	<b>20.1</b>	<b>22.7</b>	<b>1.1</b>	<b>0.6</b>	<b>58.4</b>	<b>29.3</b>	<b>583.0</b>	<b>529.4</b>	<b>102.6</b>	<b>105.9</b>	<b>0.0</b>	<b>0.0</b>	<b>767.2</b>	<b>689.0</b>
<i>Northeast Region</i>																	
	8th	0.0	0.0	1.0	2.7	0.0	0.0	0.0	0.0	54.0	41.9	33.2	24.3	0.0	0.0	88.2	68.9
	13th	0.0	0.0	0.0	0.0	0.0	0.0	1.0	1.7	28.7	24.8	5.0	2.8	3.0	3.0	37.7	32.3
	17th	1.0	0.4	0.0	0.0	0.0	0.0	0.0	0.0	271.2	238.7	89.8	80.1	0.0	0.0	361.9	319.3
	19th	0.4	0.3	3.0	3.3	0.0	0.0	0.0	0.0	54.4	55.2	28.7	26.6	1.0	1.0	87.6	86.4
	20th	3.0	2.7	14.0	9.8	0.0	0.0	0.0	0.0	98.0	83.4	34.0	30.7	13.7	13.4	162.7	140.0
<b>Northeast Total</b>		<b>4.4</b>	<b>3.5</b>	<b>18.0</b>	<b>15.7</b>	<b>0.0</b>	<b>0.0</b>	<b>1.0</b>	<b>1.7</b>	<b>506.3</b>	<b>444.0</b>	<b>190.7</b>	<b>164.6</b>	<b>17.7</b>	<b>17.4</b>	<b>738.1</b>	<b>646.9</b>
<i>Southern Region</i>																	
	3rd	0.0	0.0	0.0	0.0	0.0	0.0	0.0	0.0	6.0	7.4	9.0	6.9	0.0	0.0	15.0	14.3
	4th	4.6	2.1	0.0	0.0	0.0	0.0	18.0	25.7	152.7	125.1	37.9	38.6	0.0	0.0	213.3	191.5
	10th	1.0	1.0	0.0	0.0	1.0	1.0	2.0	2.0	20.1	21.5	7.5	7.9	0.3	0.0	31.8	33.4
	11th	1.0	1.0	0.0	0.0	0.0	0.0	7.0	8.5	34.8	25.7	19.6	20.2	0.0	0.0	62.5	55.4
	12th	0.0	0.0	1.0	1.0	0.0	0.0	4.0	3.0	15.7	12.4	0.0	0.0	0.0	0.0	20.7	16.5
	15th	0.0	0.0	1.0	1.7	0.0	0.0	0.0	0.0	4.0	2.7	5.8	5.4	0.0	0.0	10.8	9.8
	16th	0.0	0.0	0.0	0.0	0.0	0.0	0.0	0.0	2.2	7.9	2.9	2.6	14.1	15.4	19.1	25.9
<b>Southern Total</b>		<b>6.6</b>	<b>4.1</b>	<b>2.0</b>	<b>2.7</b>	<b>1.0</b>	<b>1.0</b>	<b>31.0</b>	<b>39.2</b>	<b>235.5</b>	<b>202.7</b>	<b>82.7</b>	<b>81.7</b>	<b>14.4</b>	<b>15.5</b>	<b>373.2</b>	<b>346.9</b>
<i>Western Region</i>																	
	6th	0.0	0.0	0.0	0.0	0.0	0.0	0.0	0.0	11.0	6.1	0.0	0.0	0.0	0.0	11.0	6.2
	7th	0.0	0.0	4.0	2.4	0.0	0.0	0.0	0.6	14.5	12.4	13.2	14.4	0.0	0.0	31.6	29.8
	9th	0.0	0.0	0.0	0.7	0.0	0.0	2.0	3.4	6.0	7.6	2.9	2.4	0.0	0.0	10.9	14.1
	14th	0.0	0.0	2.0	1.4	0.0	0.0	1.0	1.1	3.0	4.3	2.0	2.1	0.0	0.0	8.0	8.9
	21st	0.0	0.0	0.0	0.0	0.0	0.0	0.0	0.0	57.2	49.5	17.2	12.9	0.0	0.0	74.4	62.3
	22nd	0.0	0.0	0.0	0.0	0.0	0.0	0.0	0.0	10.0	7.1	13.3	8.9	0.0	0.0	23.3	16.0
<b>Western Total</b>		<b>0.0</b>	<b>0.0</b>	<b>6.0</b>	<b>4.6</b>	<b>0.0</b>	<b>0.0</b>	<b>3.0</b>	<b>5.1</b>	<b>101.7</b>	<b>86.9</b>	<b>48.6</b>	<b>40.7</b>	<b>0.0</b>	<b>0.0</b>	<b>159.3</b>	<b>137.3</b>
<b>Statewide Total</b>		<b>13.1</b>	<b>8.7</b>	<b>46.1</b>	<b>45.7</b>	<b>2.1</b>	<b>1.6</b>	<b>93.4</b>	<b>75.3</b>	<b>1426.4</b>	<b>1263.0</b>	<b>424.6</b>	<b>392.9</b>	<b>32.0</b>	<b>32.9</b>	<b>2037.7</b>	<b>1820.1</b>